



duluth

digital

library

problem statement

how do the use of advanced computing techniques influence the design of the built environment?

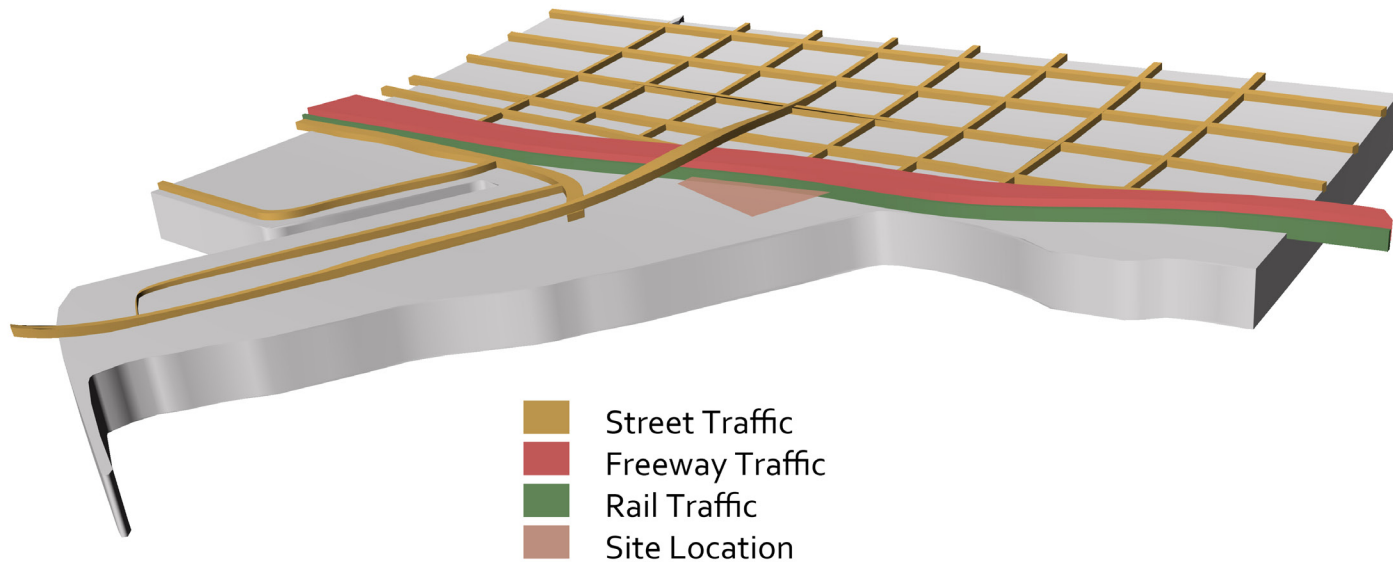
duluth city limits



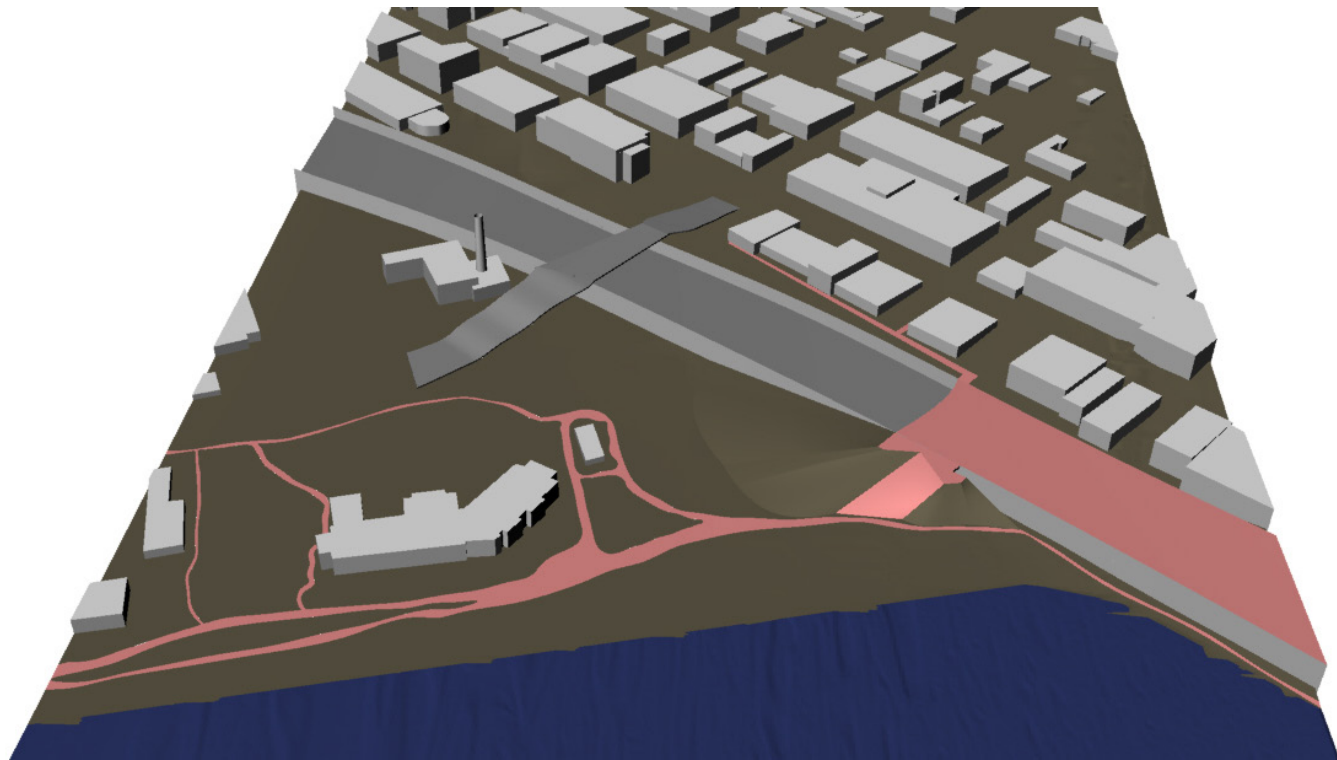
site



existing grids



pedestrian traffic



east view



north toward site



west across site



south infront of site

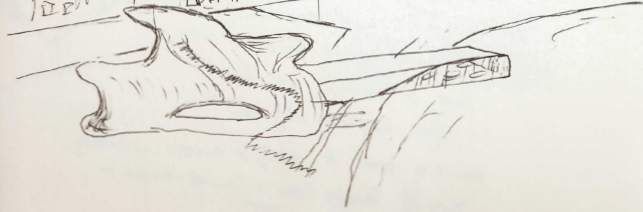
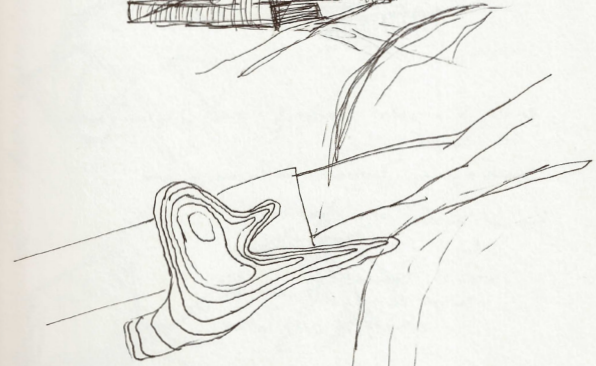


sketches

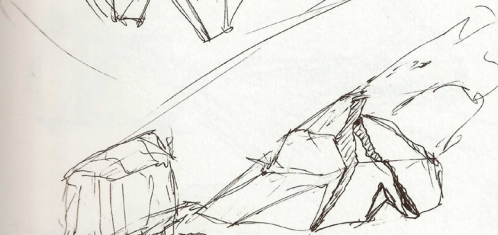
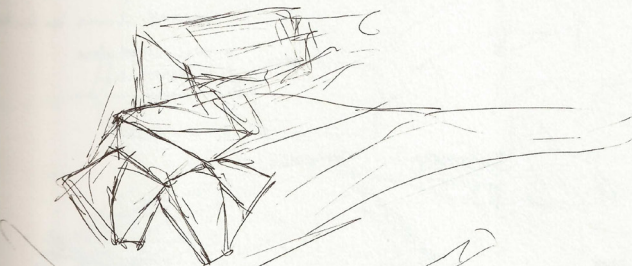
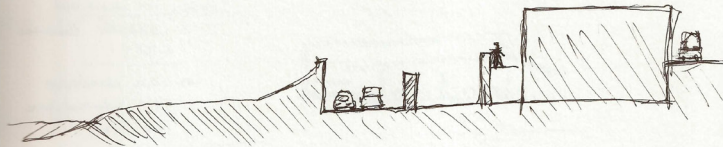
DULUTH LIBRARY -

Water / Rock

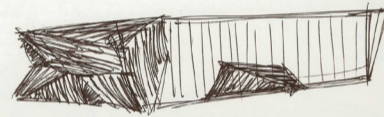
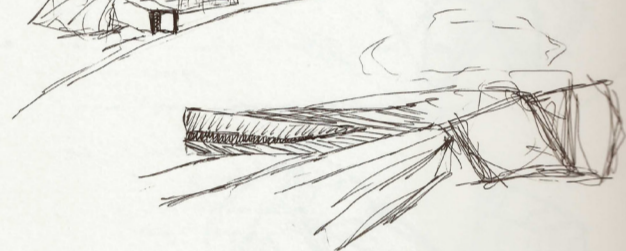
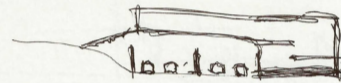
Week 2



sketches



Deck 2



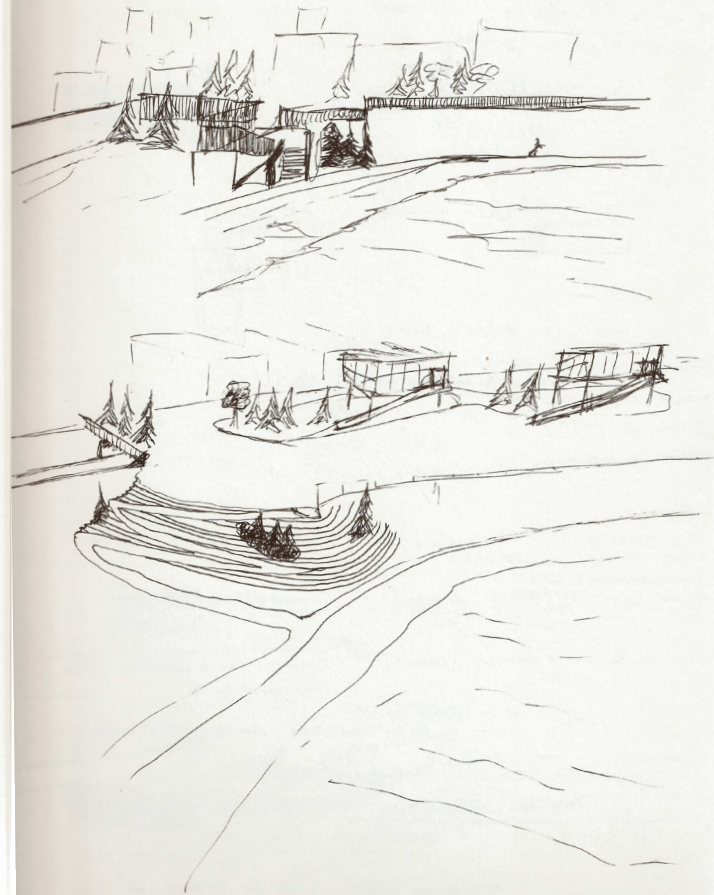
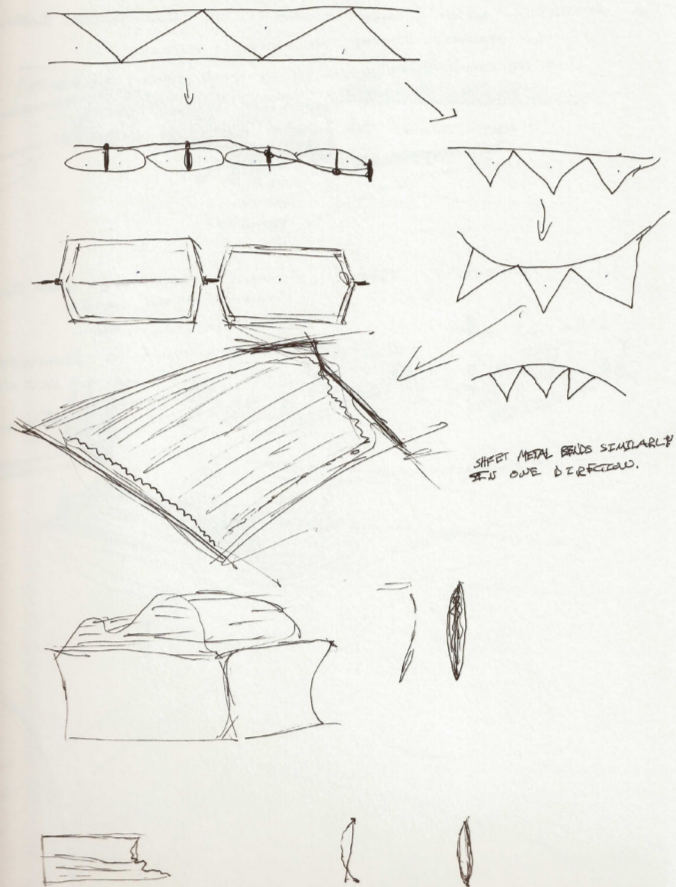
GPS DIRECTIONS →
LAPTOPS → CHECK OUT
→ LIBRARY BECOMES
CITY

→ can check out
FOR LIMITED TIME
FOR FREE.

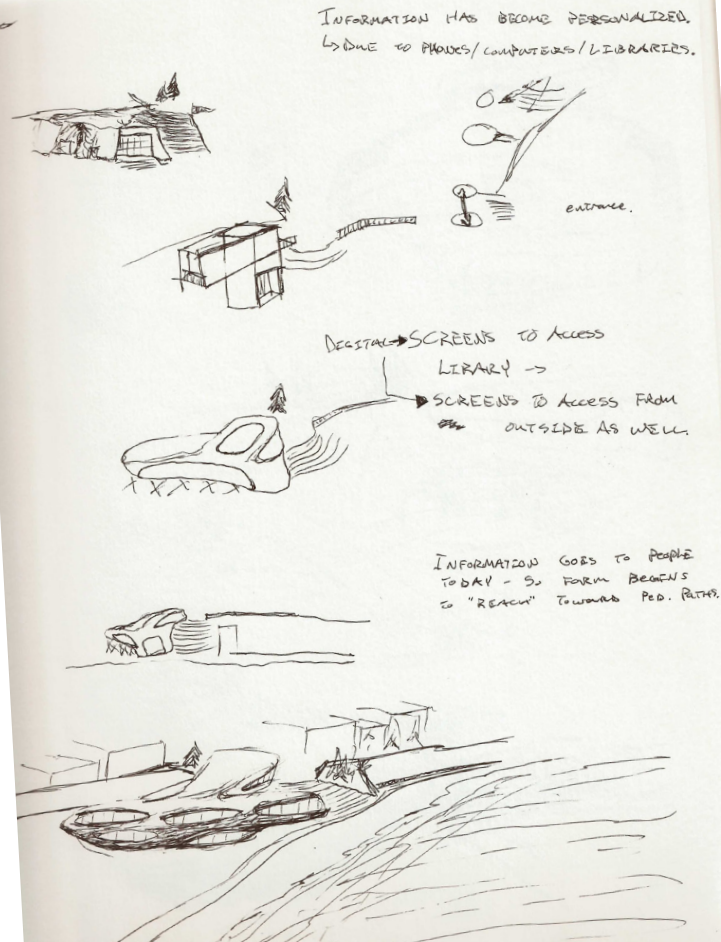
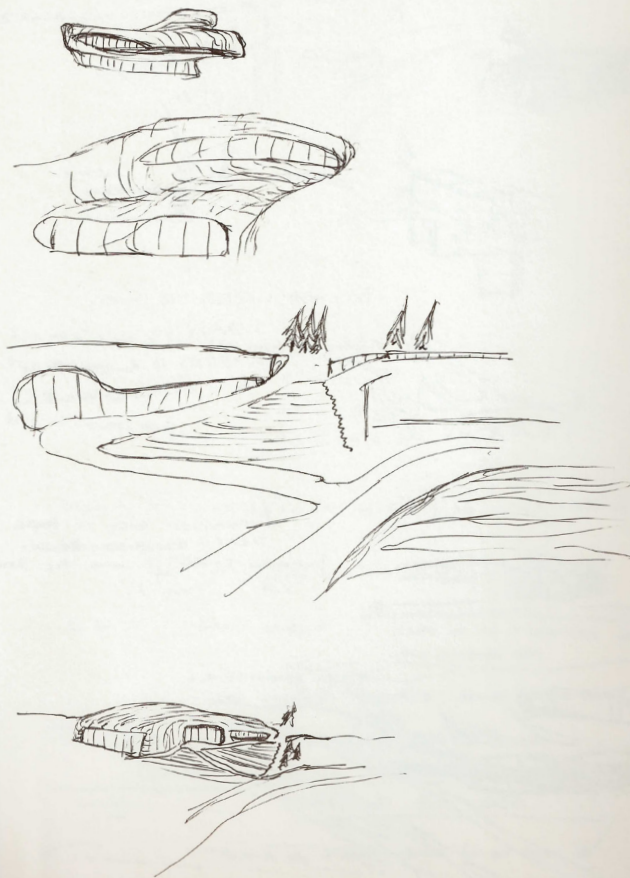
NOW THE WAY IS THE LIBRARY
LIBRARY BECOMES THE FACILITY
→ STILL WHAT DOES
LIBRARY DO?

HOW CAN STRUCTURE BECOME MALLEABLE?
(OR DYNAMIC?)

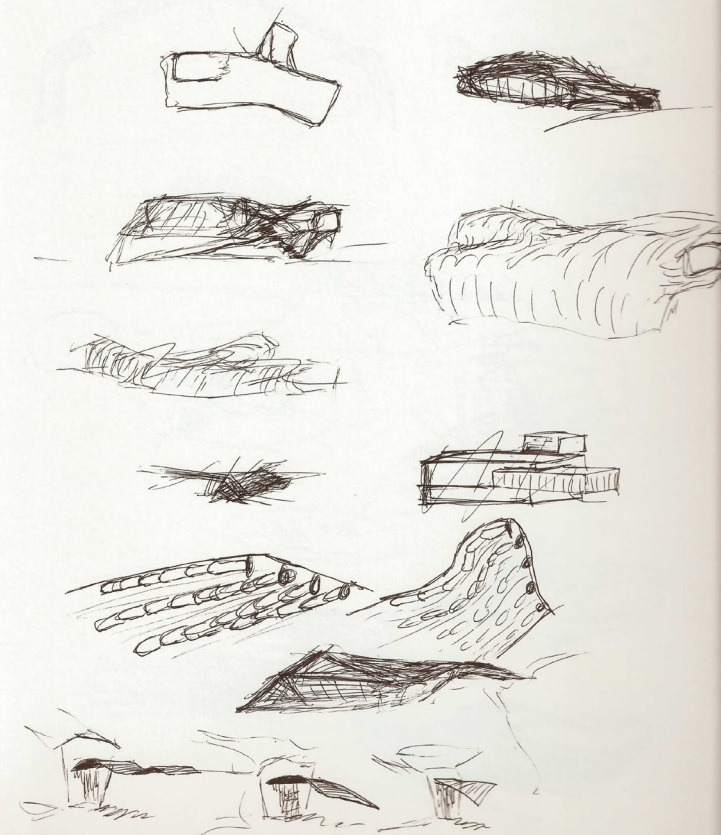
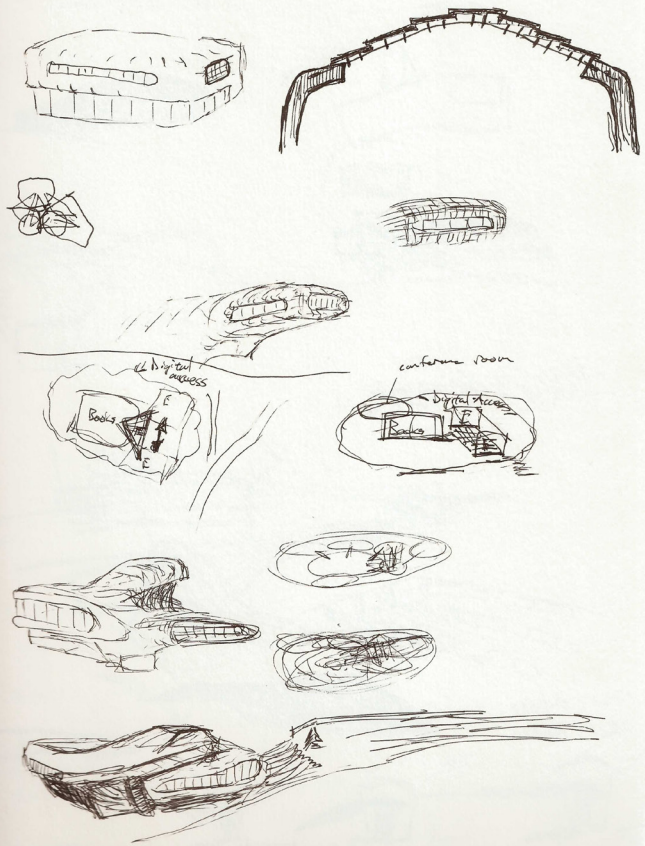
sketches



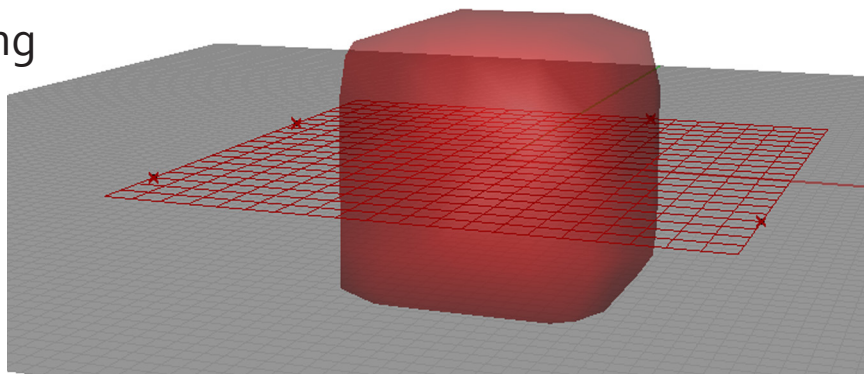
sketches



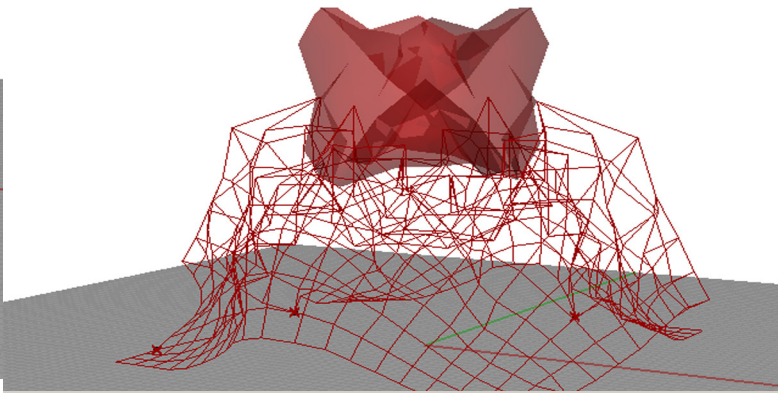
sketches



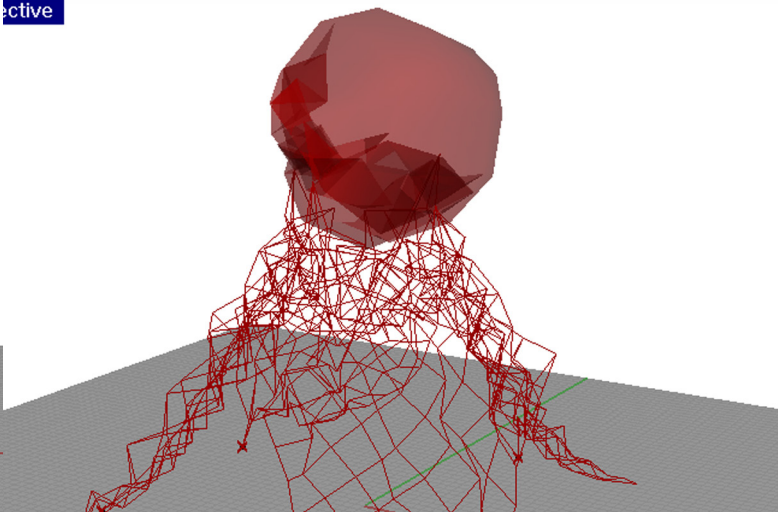
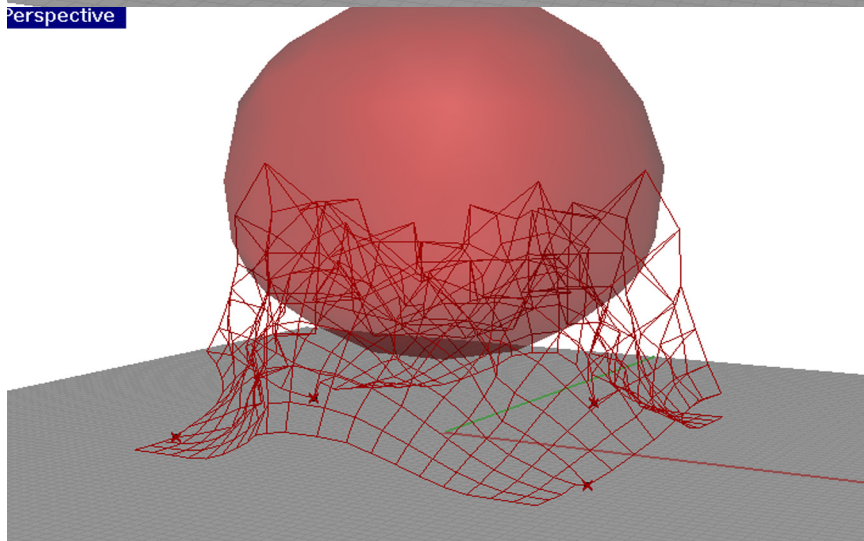
active modeling



Perspective

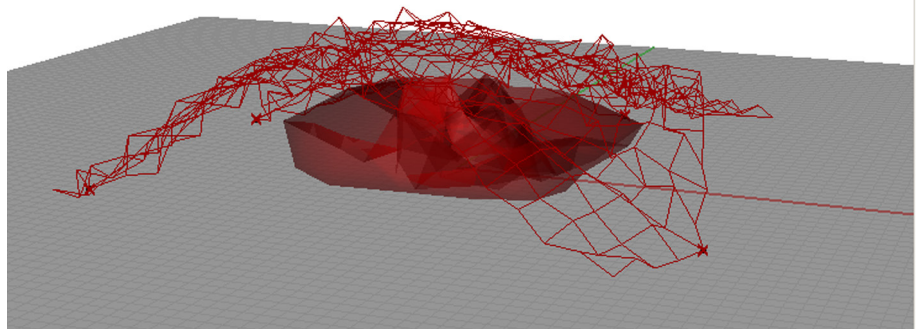
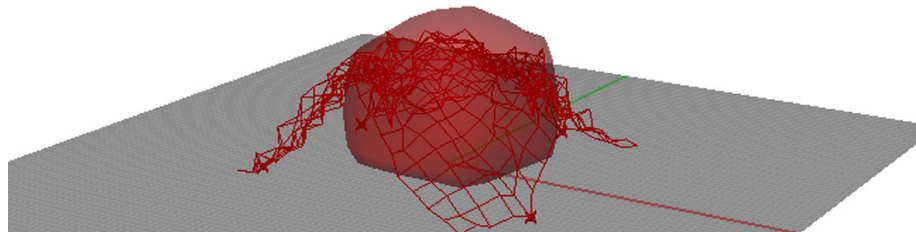
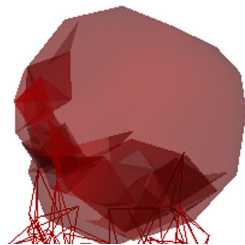


Perspective

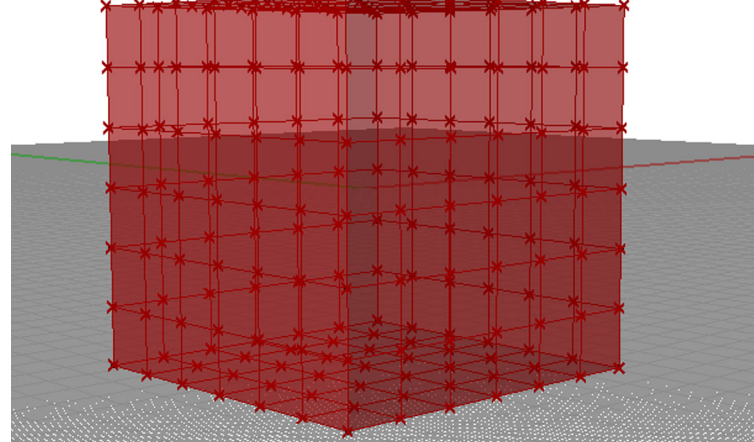


active modeling

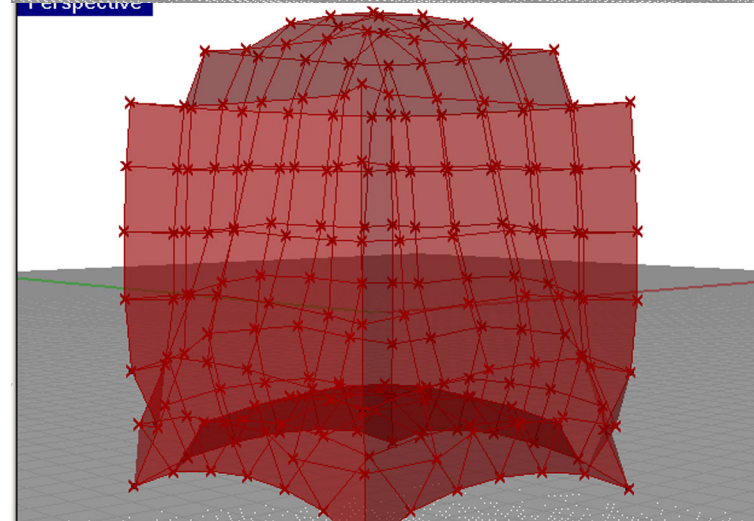
Perspective



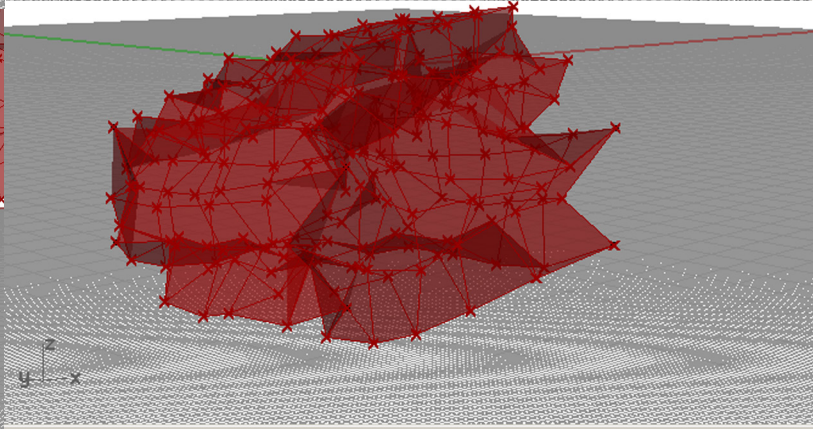
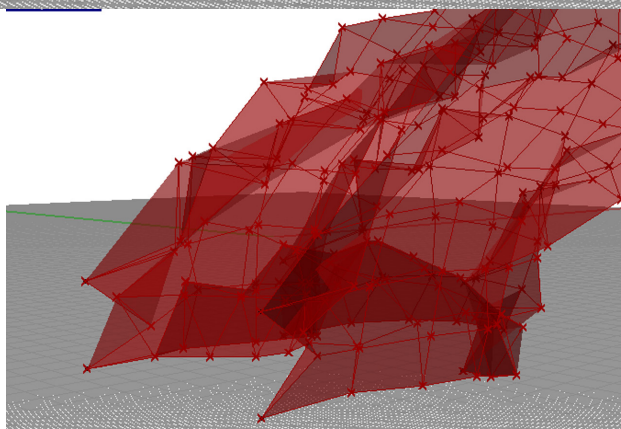
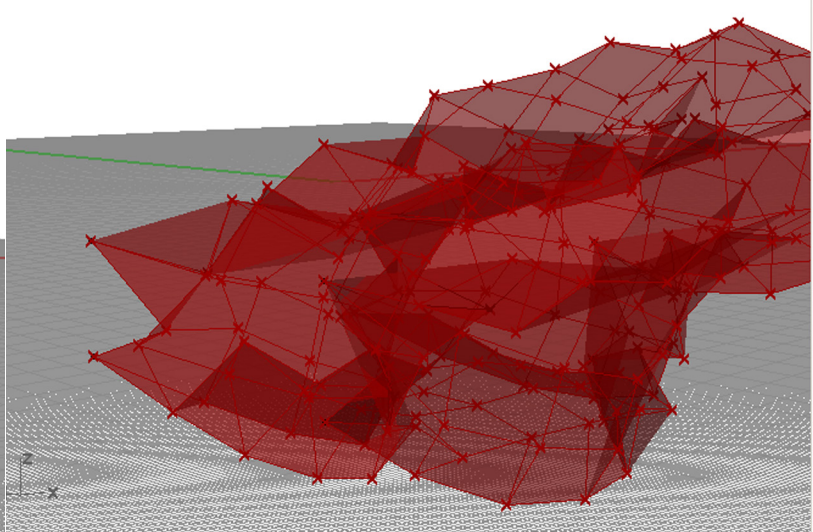
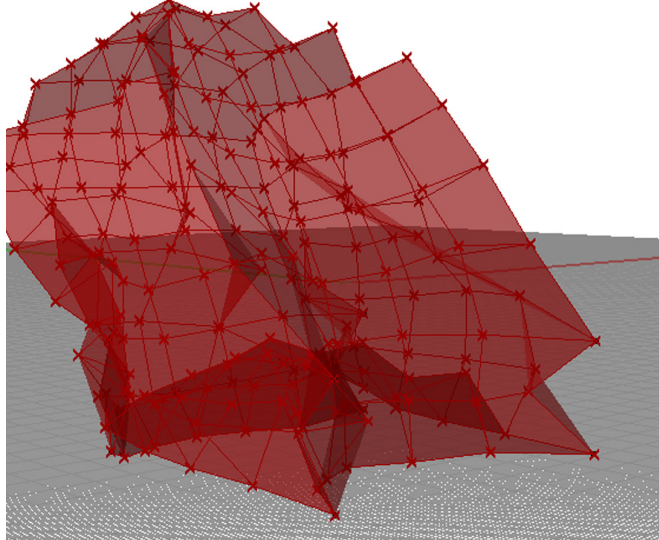
active modeling



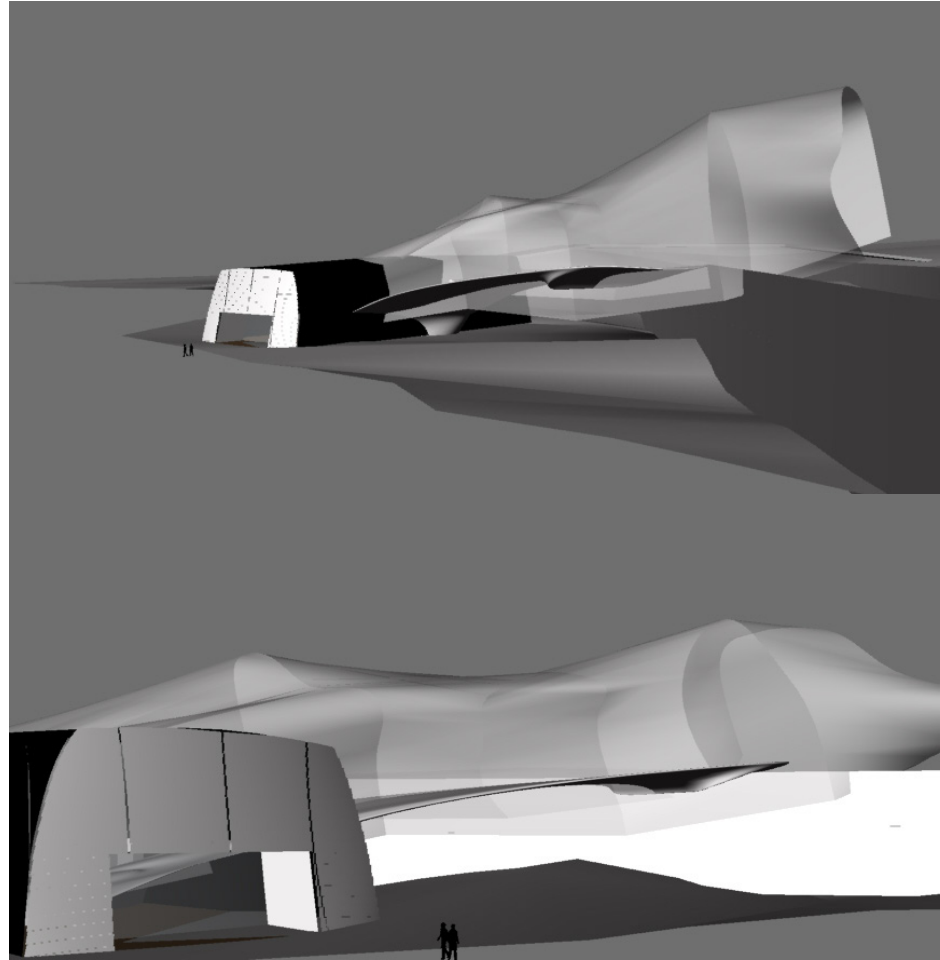
Perspective



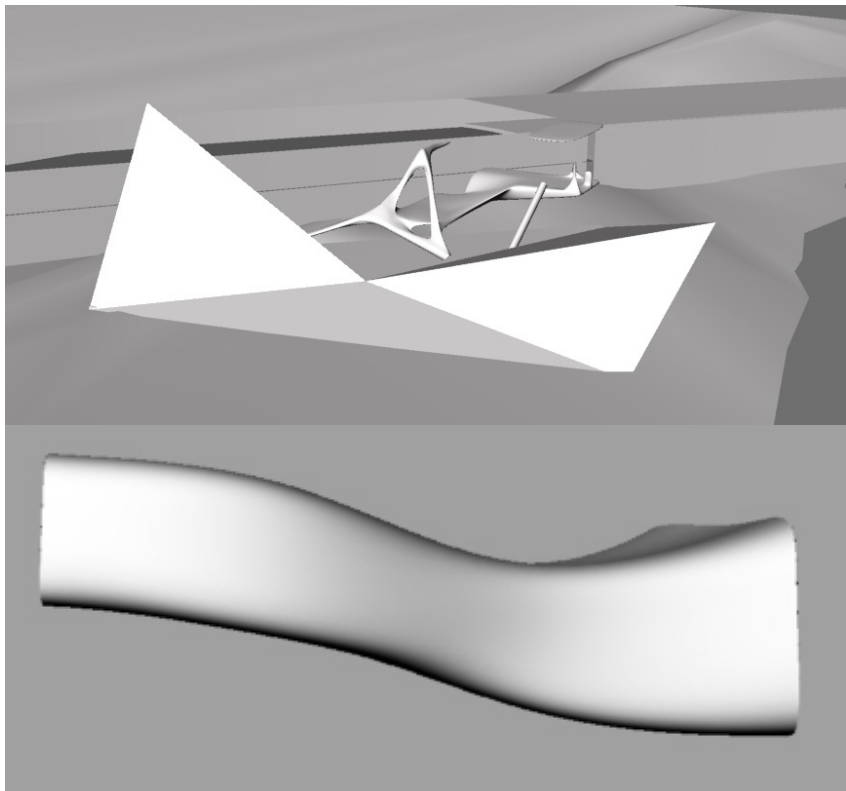
active modeling



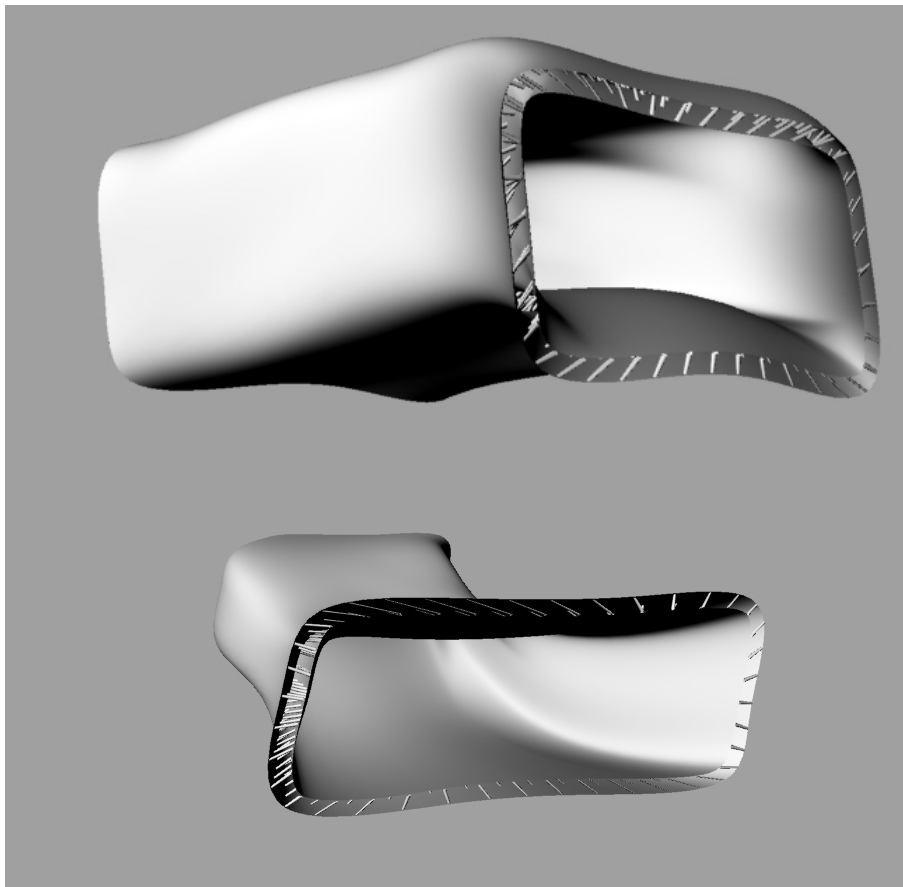
models



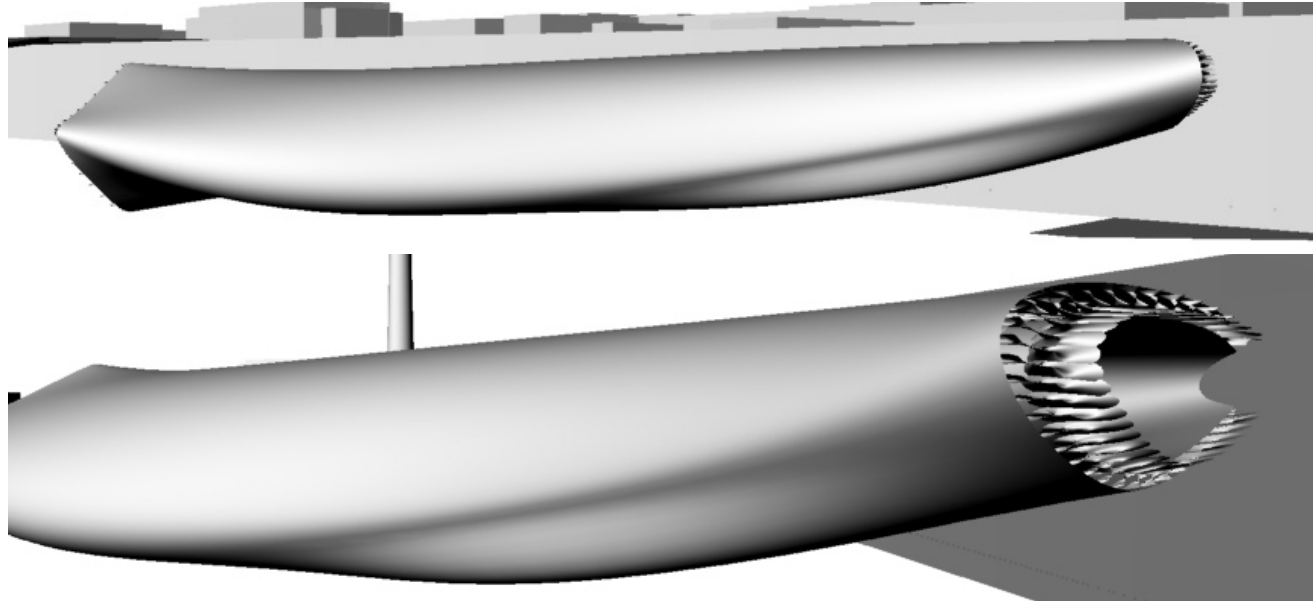
models



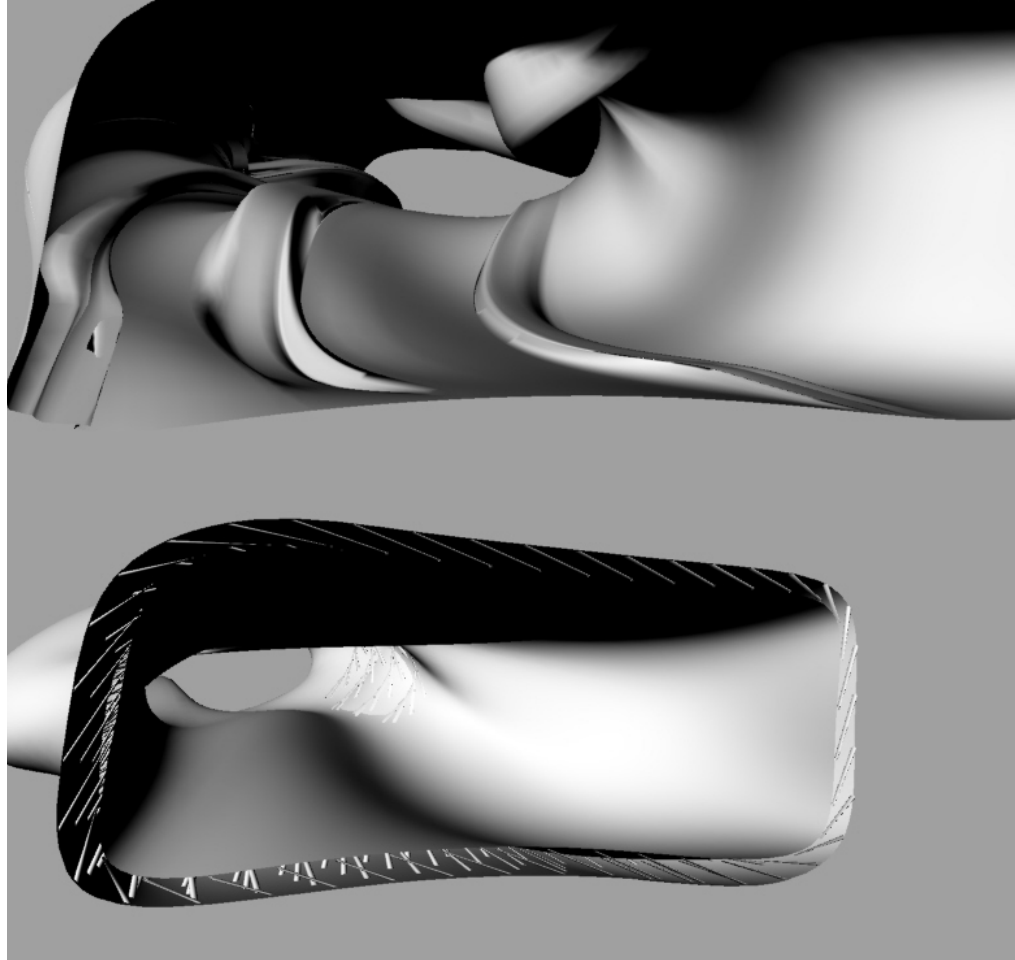
models



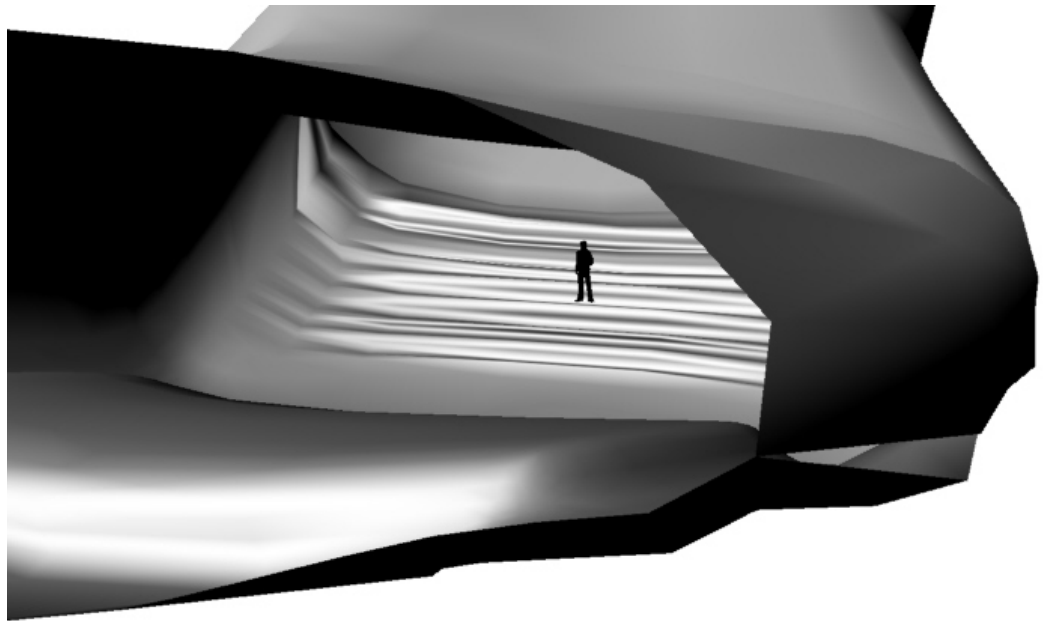
forms



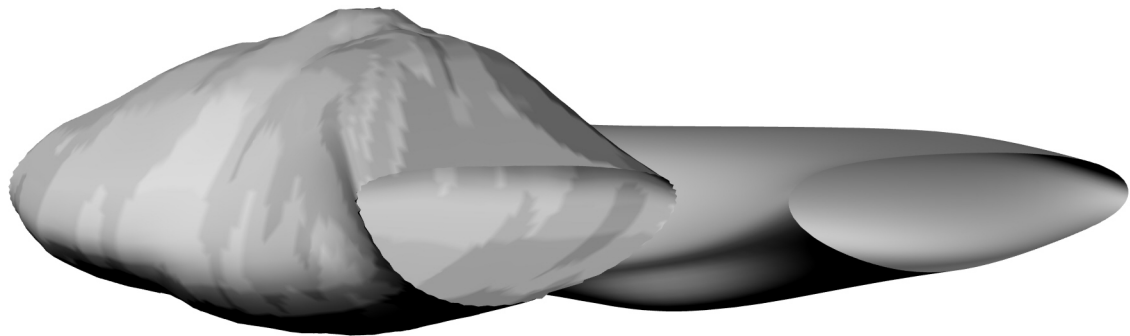
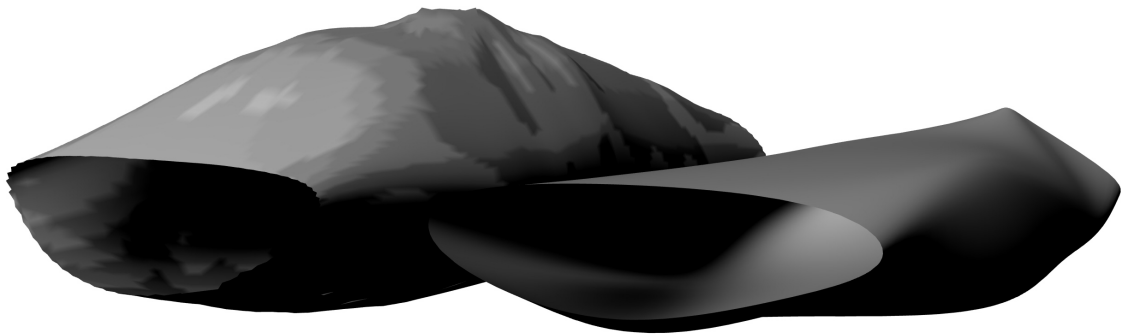
responsive interior



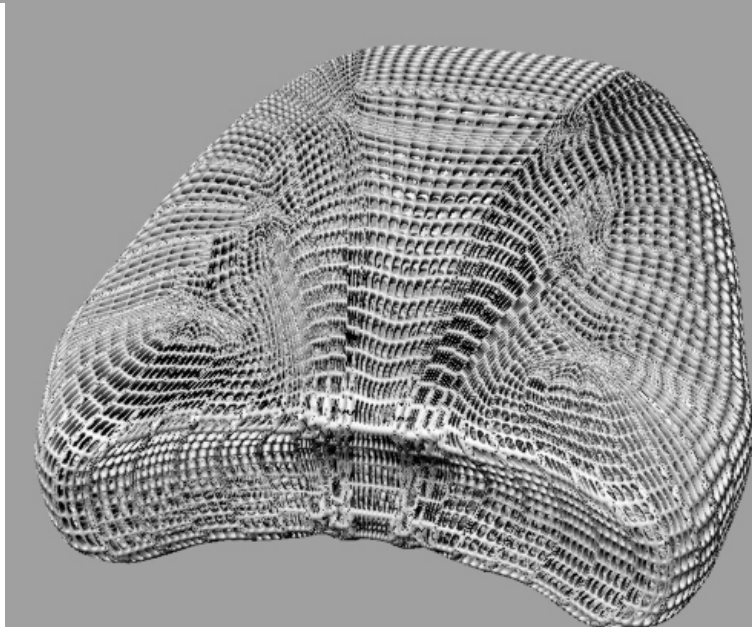
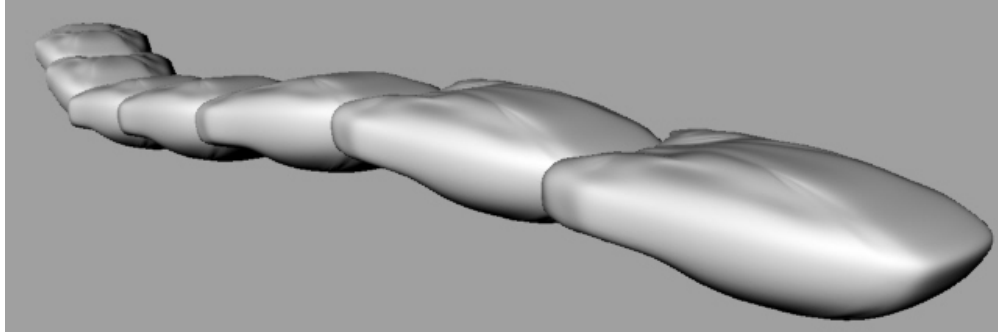
responsive interior



responsive exterior



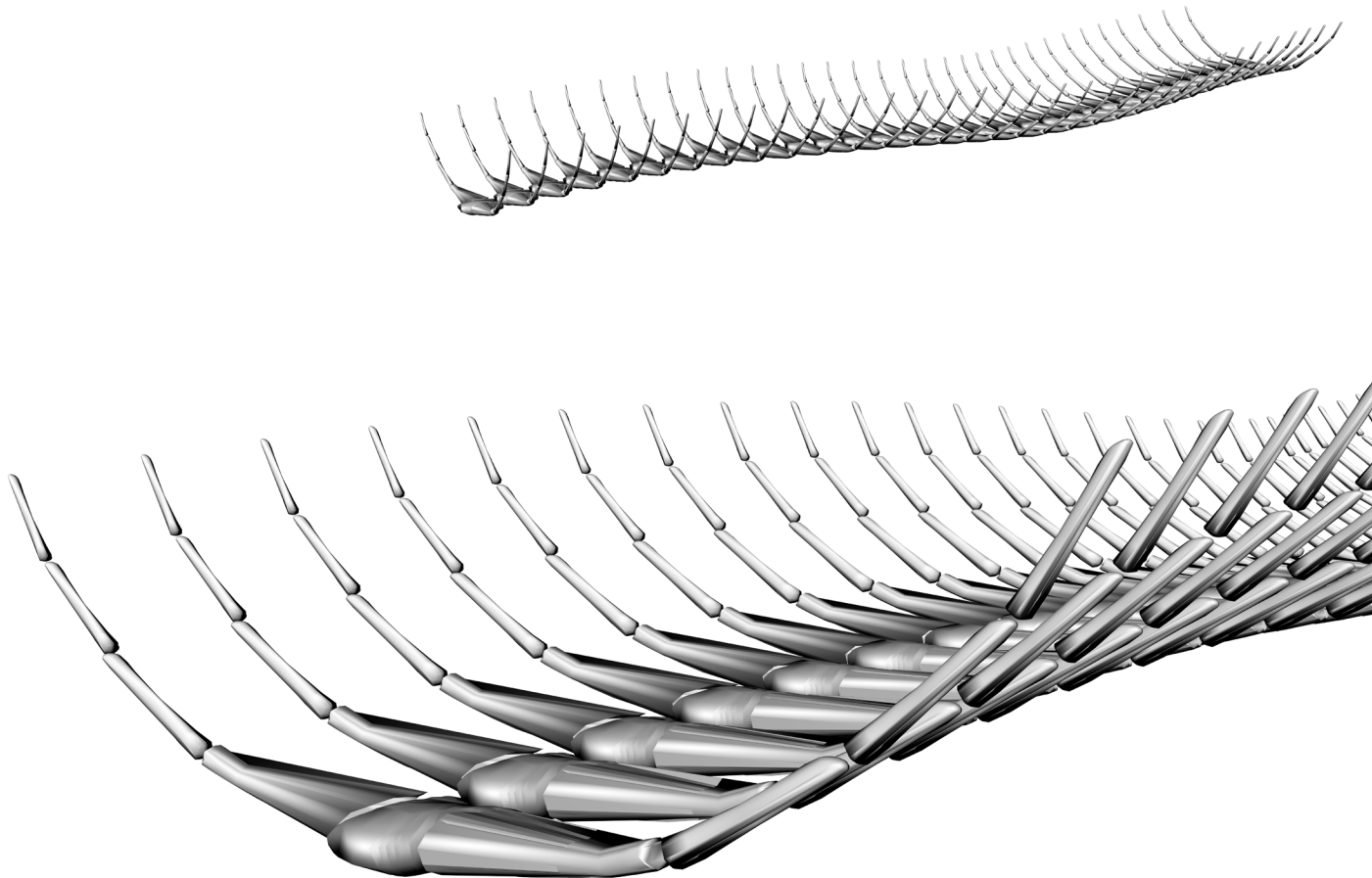
structure



structure



structure



structure

