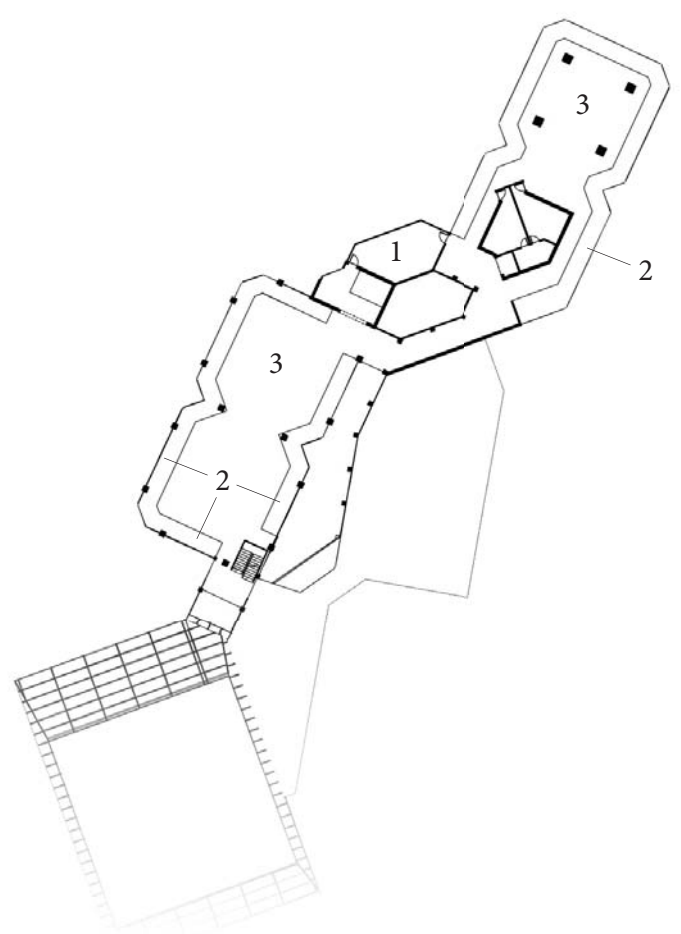


- 1 | exterior classroom
- 2 | individual space
- 3 | group space

fifth



gymnasium

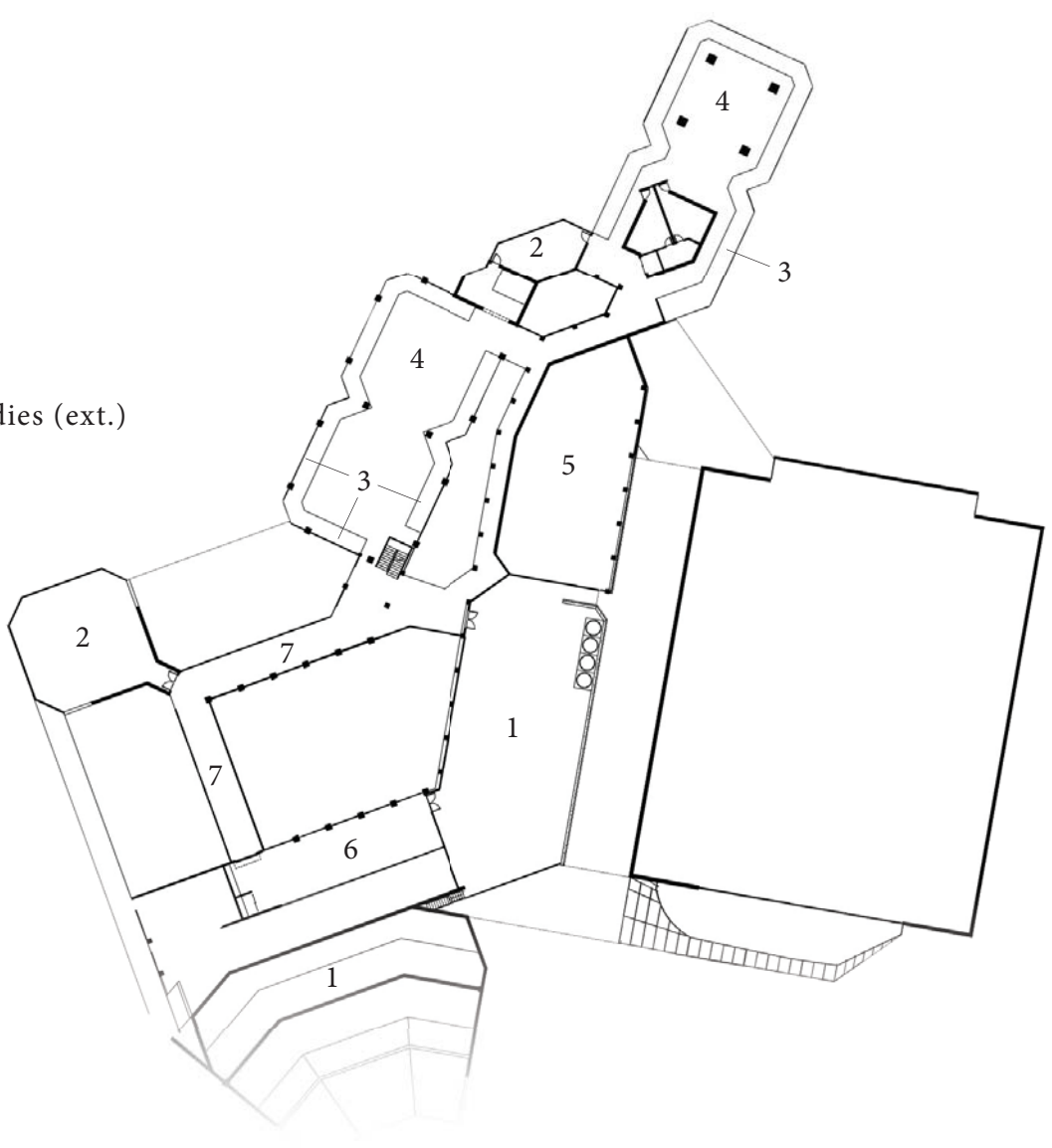


- 1 | exterior classroom
- 2 | individual space
- 3 | group space

fourth

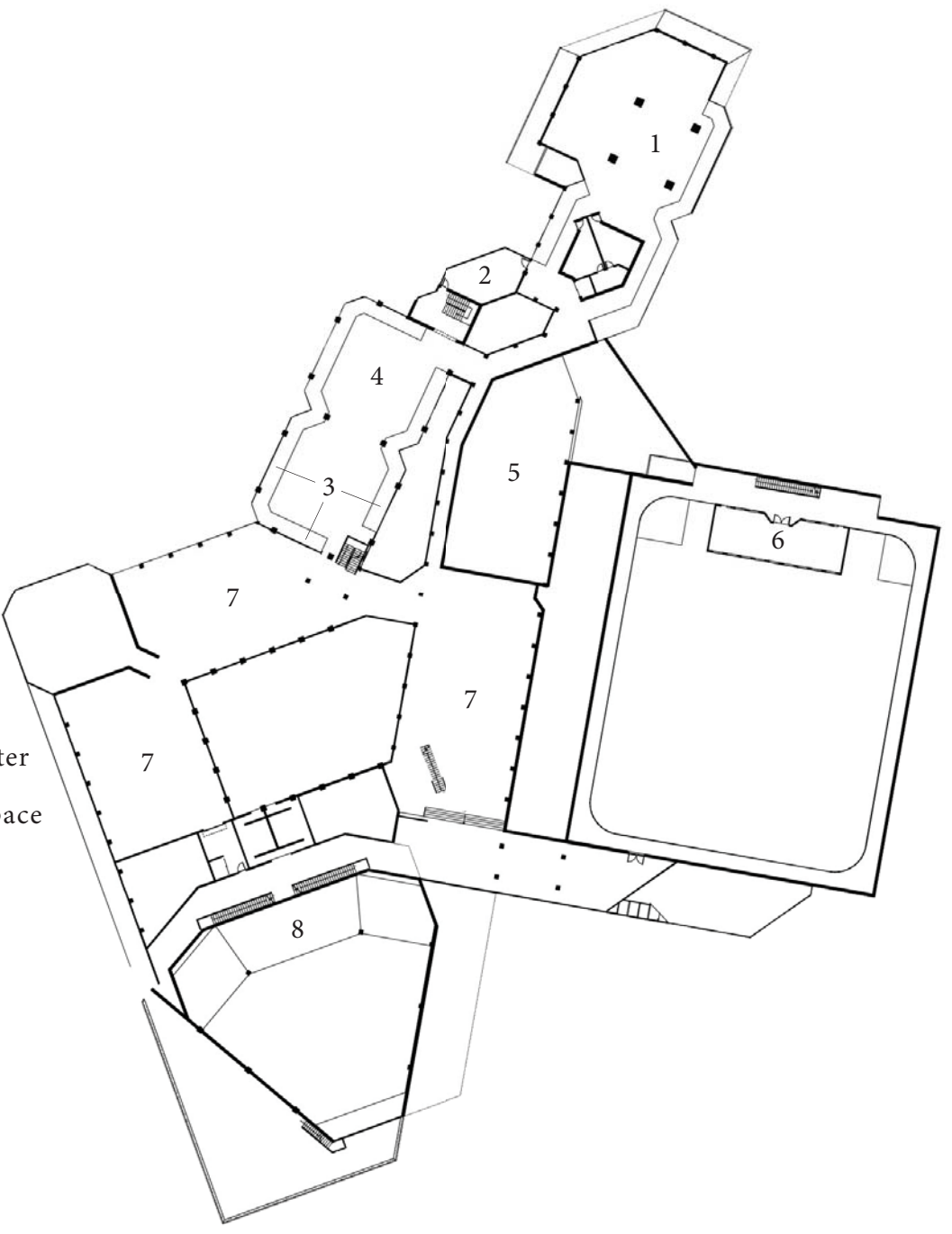


fifth floor classrooms



- 1 | environmental studies (ext.)
- 2 | exterior classroom
- 3 | individual space
- 4 | group space
- 5 | laboratory
- 6 | greenhouse
- 7 | reading space

third



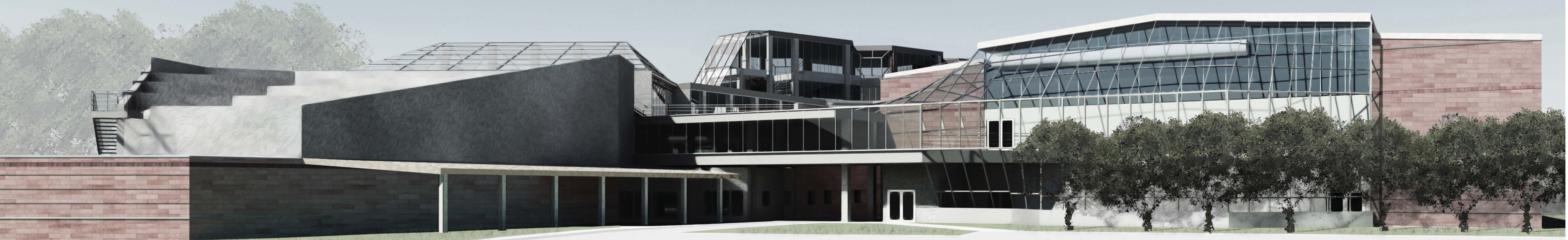
- 1 | music hall
- 2 | exterior classroom
- 3 | individual space
- 4 | group space
- 5 | laboratory
- 6 | track & fitness center
- 7 | reading & group space
- 8 | balcony
- 9 | gymnasium

second

- big sioux river
- railway bridge converted to pedestrian
- former railways adapted to bike/walking paths where appropriate
- athletic fields

site plan

Founded on many principles of the Montessori Method, the school emphasizes an active education rather than passive, with much less traditional lecture space. In lieu, space is individualized and made to foster individual study as well as centralized group study in a flexible yet focussed educational environment. Numerous exterior classrooms take full advantage of the site's views, and a series of diffused light atriums and curtainwall systems fill the spaces with natural light.



FALLS PARK HIGH SCHOOL



ground level

sublevel