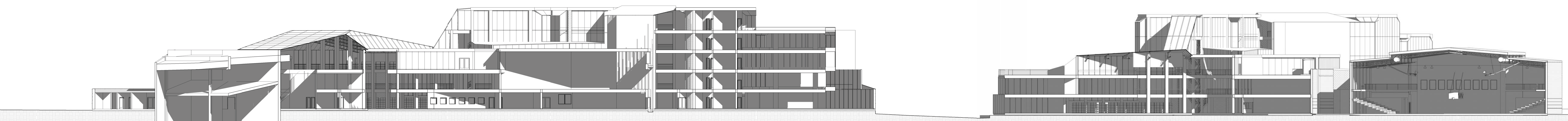


section a

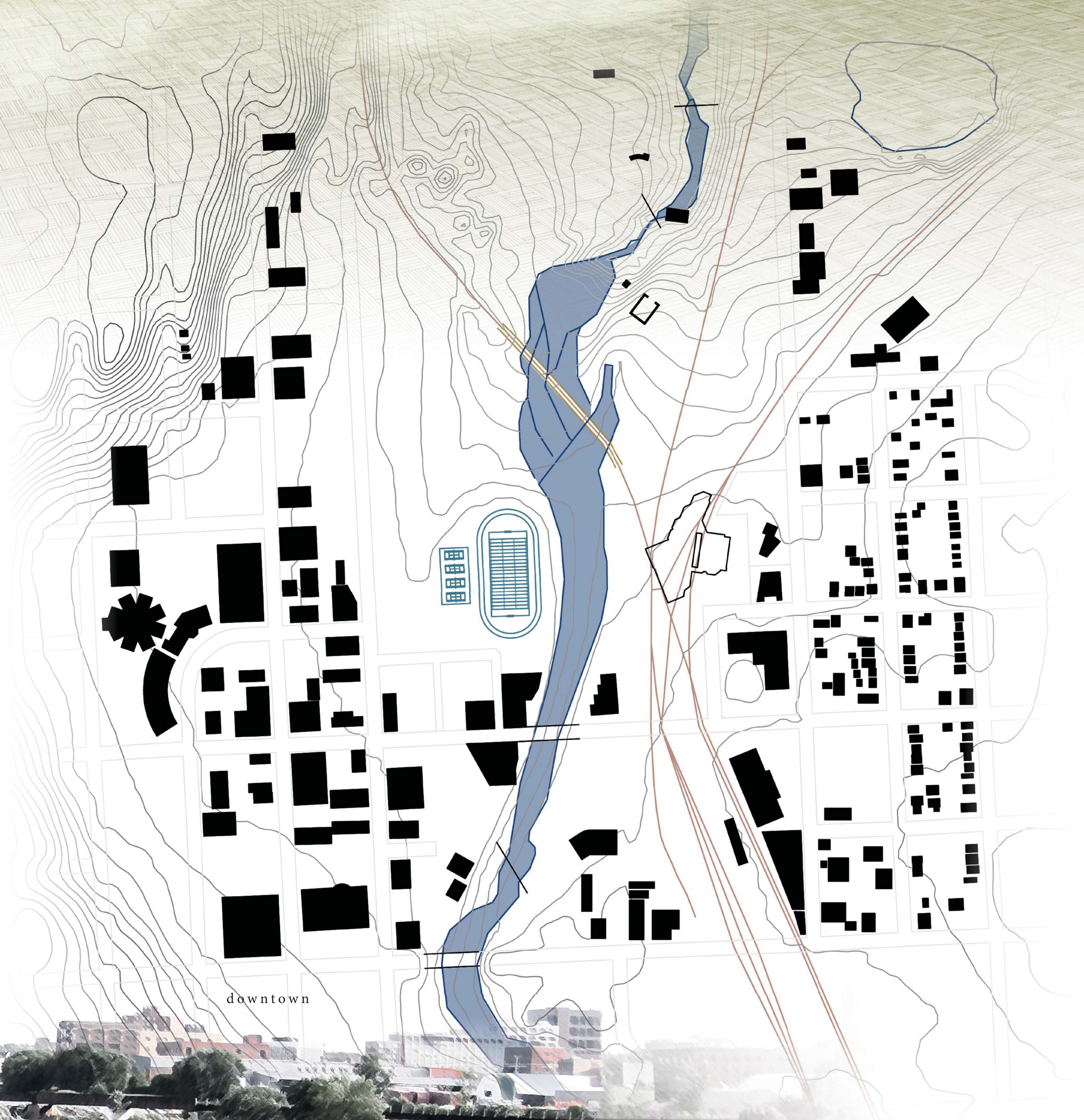
section b



library / commons

educative junction

Learning environments are a critical element in the efficacy of education, particularly at a level where students begin to choose their own subjects of emphasis. It is then that they must be allowed much more freedom in curriculum selection and environmental diversity in the pursuit of their own self-actualized learning and self-motivation. The elected site for exploration of this claim is at the heart of Sioux Falls, SD. With the planned removal of the downtown railway, the city is revitalizing its historic core encompassing Falls Park. The project ideas converge and diverge from the rail turnout, a new junction point for the educational environment.



from falls park tower