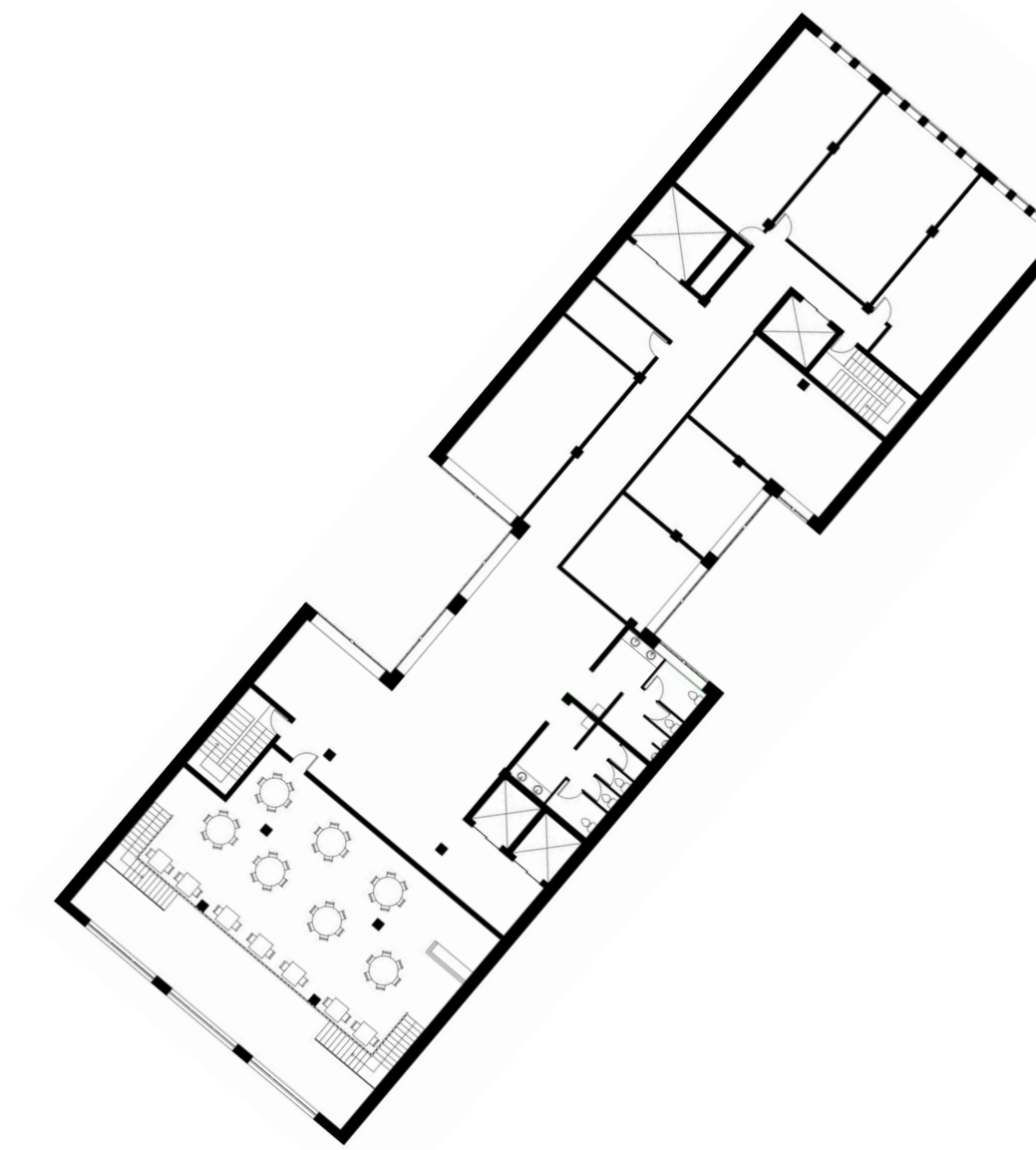
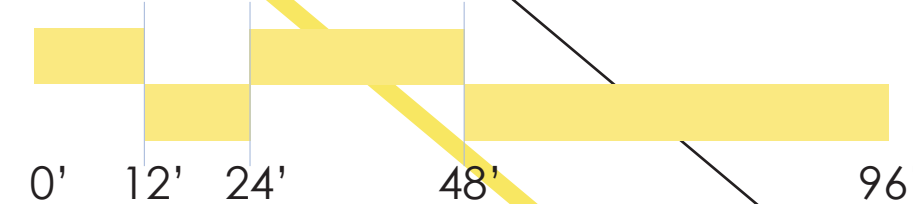


43 West 23rd Street - Existing 8 Story Building

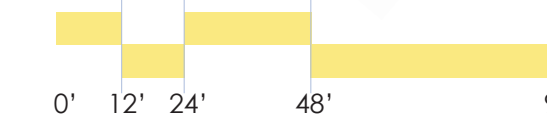
39 West 23rd Street - 7 Story, Terraced Addition

35 West 23rd Street - Existing 5 Story Building

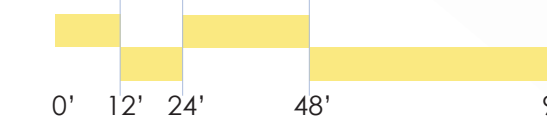
Site Plan



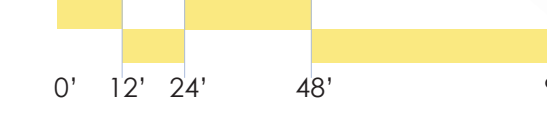
Level Eight
 Restaurant Upper Level
 Private Banquet Rooms | Restrooms



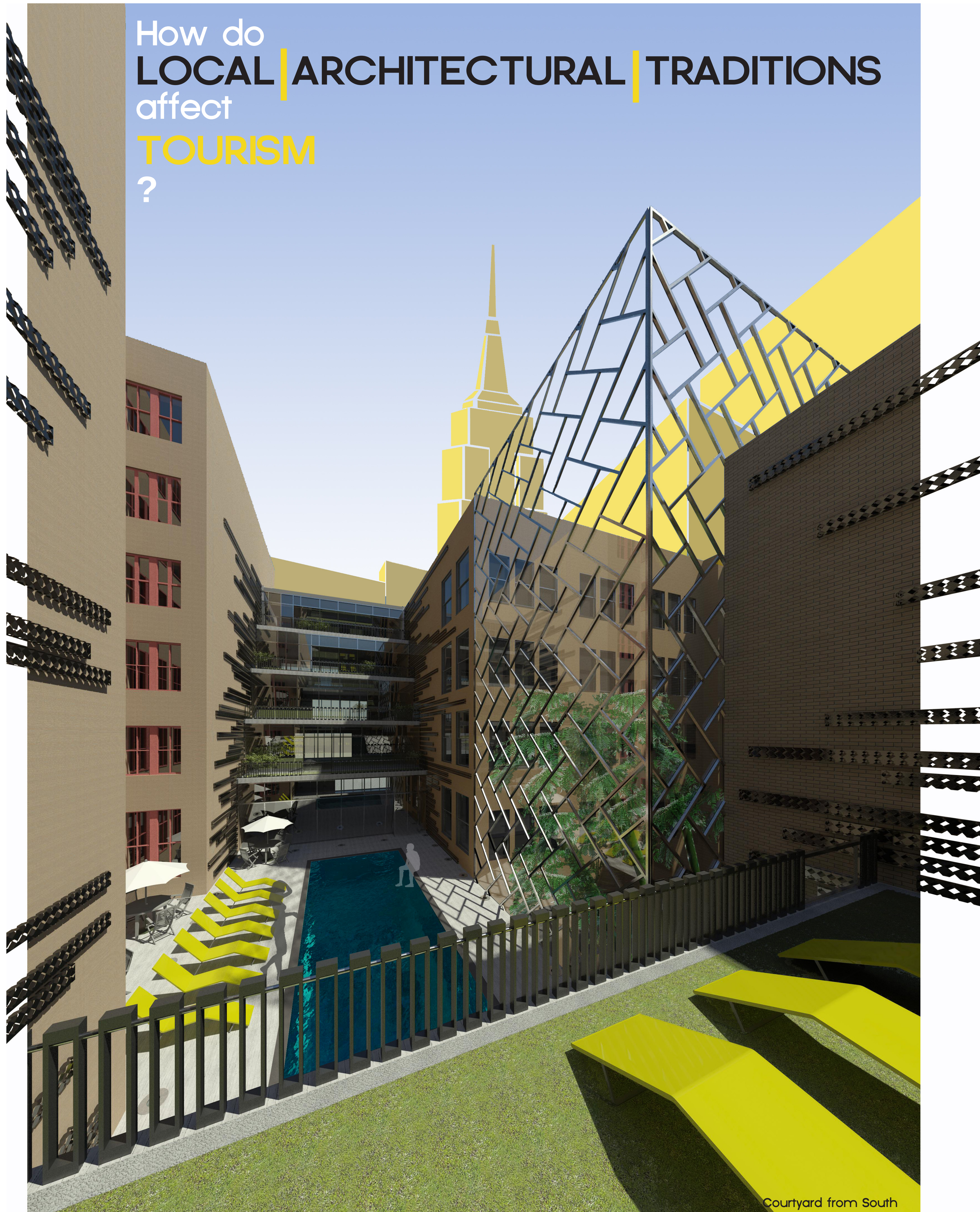
Level Seven
 6 Hotel Rooms
 Restaurant Main Level | Bar
 Kitchens/Storage | Restrooms



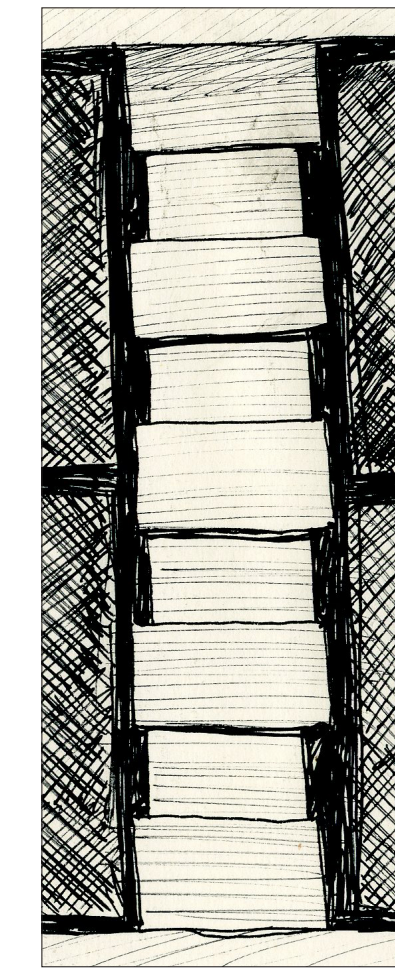
Level Six
 18 Hotel Rooms
 Terraces Open to Courtyard



How do
LOCAL | ARCHITECTURAL | TRADITIONS
 affect
TOURISM
 ?

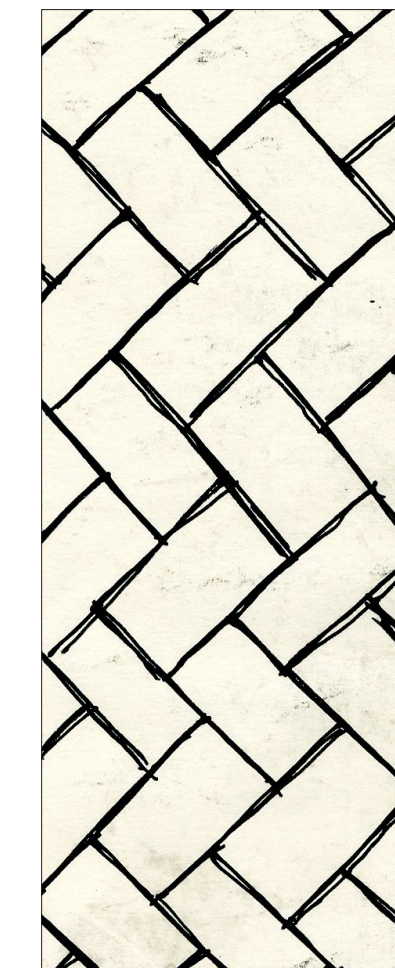


Courtyard from South



MOTIF

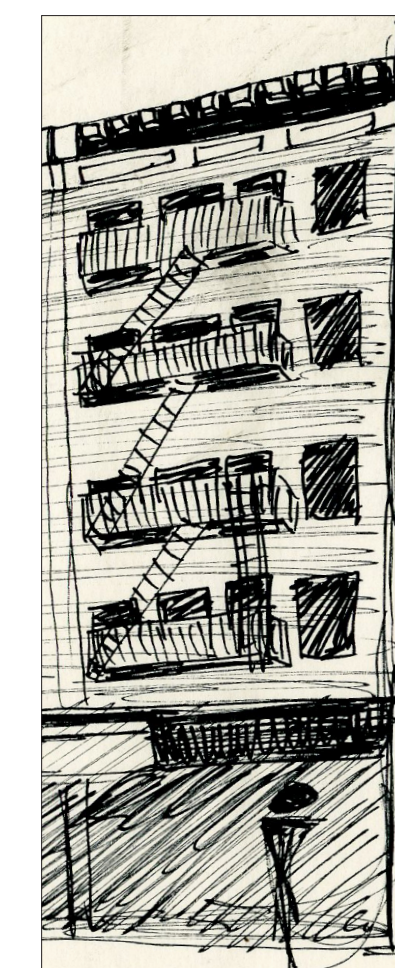
Though purely decoration, herringbone-punched metal bands clad both street facades and the interior courtyard's existings walls. The bands prove to create dynamic surfaces while connecting the exterior and interior. This traditional banding motif is borrowed from buildings in all corners of the district.



PATTERN

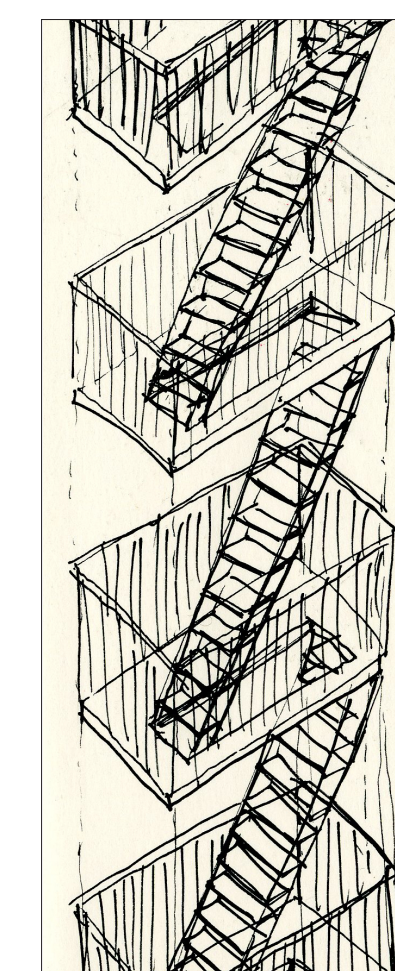
In homage to Gustafino's tiled ceiling at Ellis Island, the herringbone pattern makes an appearance in the metal banding cladding and glass bamboo courtyard. Though not iconic to just New York, the pattern is a strong tradition in the interiors of the city's buildings.

The course patterns of the bricks in the city's existing buildings creates a strong horizontal feel. The use of banding emphasizes this tradition while juxtaposing the general verticality of the surrounding city.



MATERIAL

Juxtaposed by the existing buildings' brick facades and metal-trimmed windows, the addition features more industrial materials, giving nod to the rapid height growth of the city. Over-sized wide-flange beams, exposed pre-cast concrete slabs, galvanized steel banding and large sheet glass are used in non-traditional ways to showcase both the existing fabric of the city and the addition in the complex.



FORM

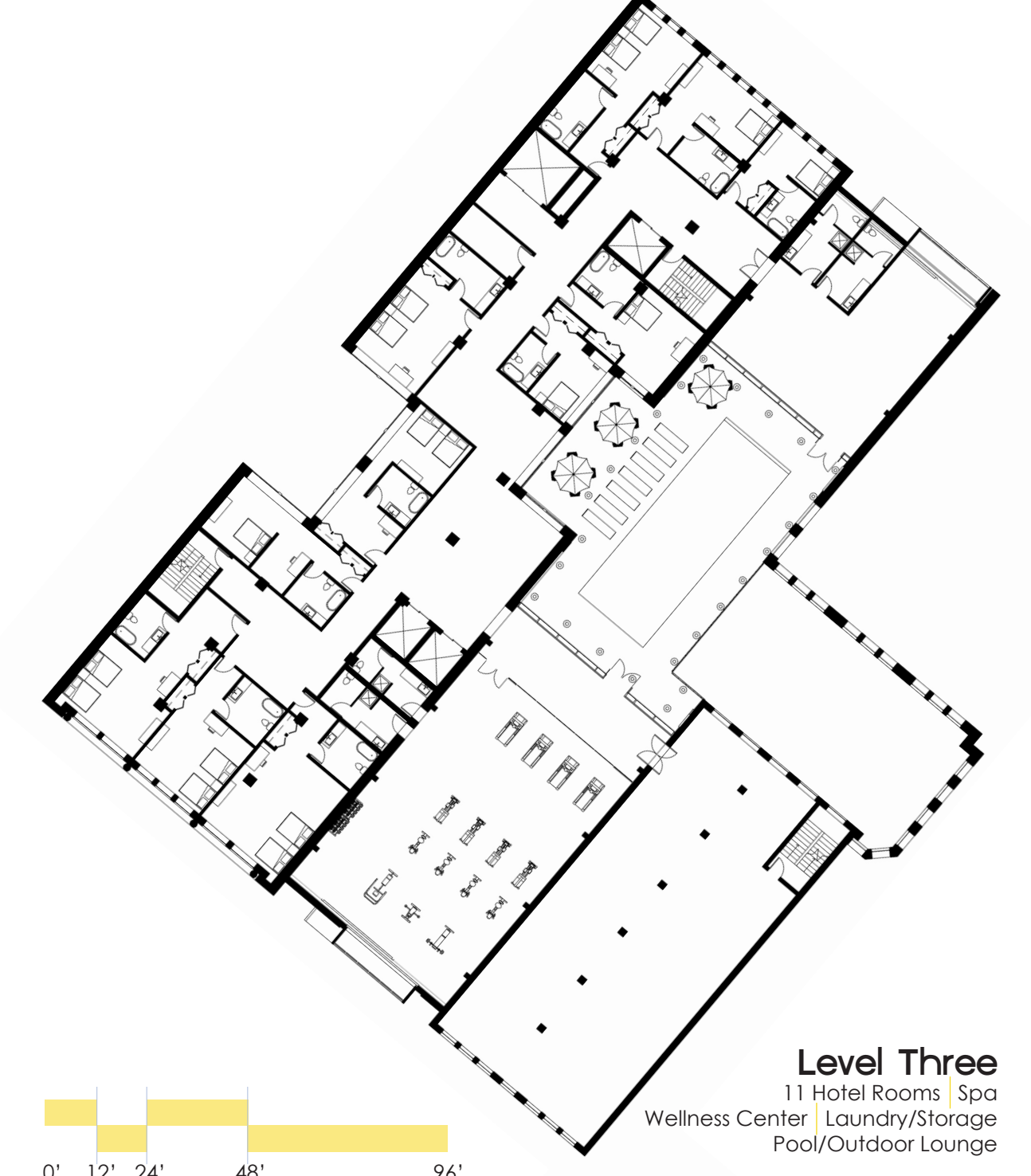
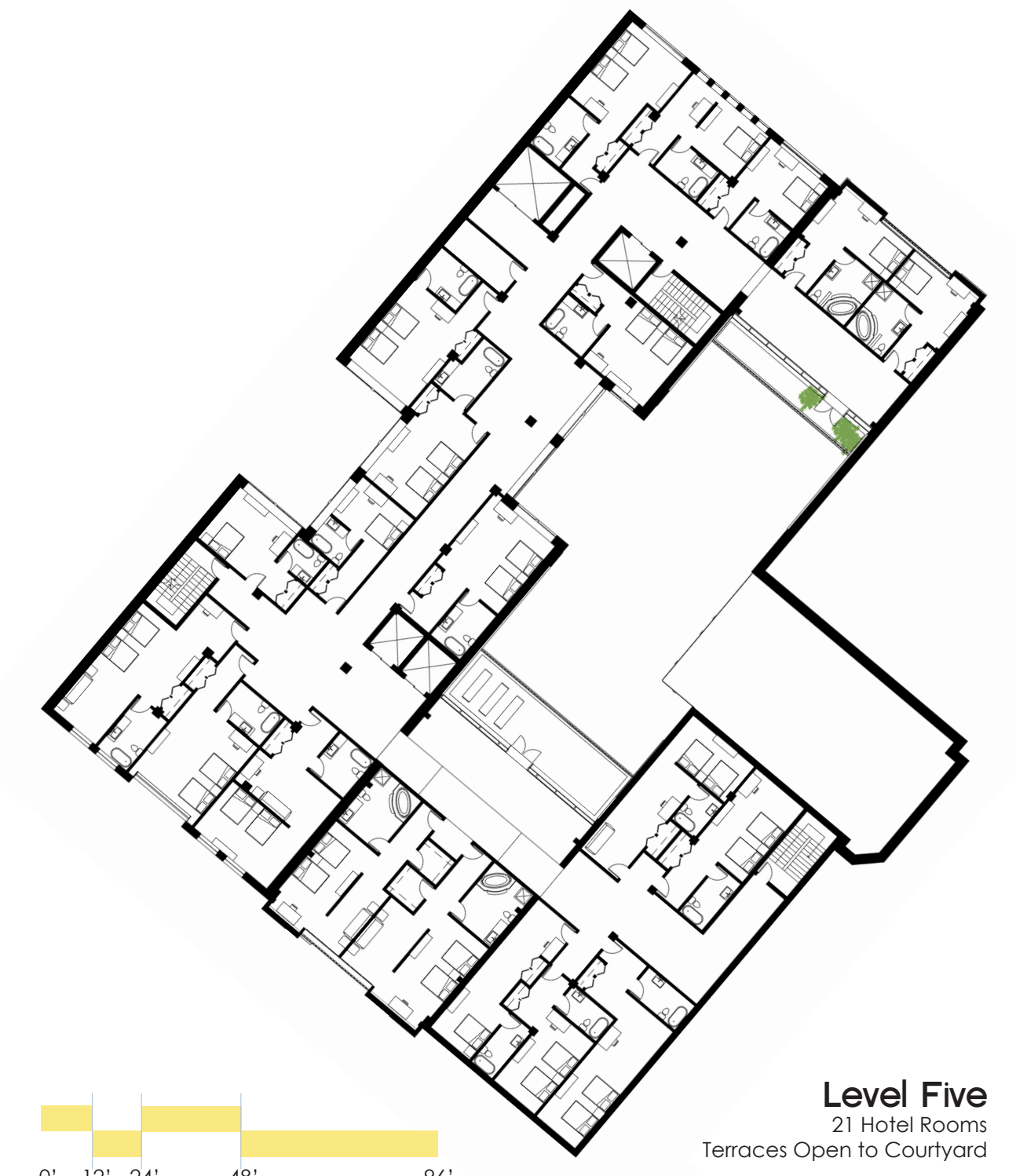
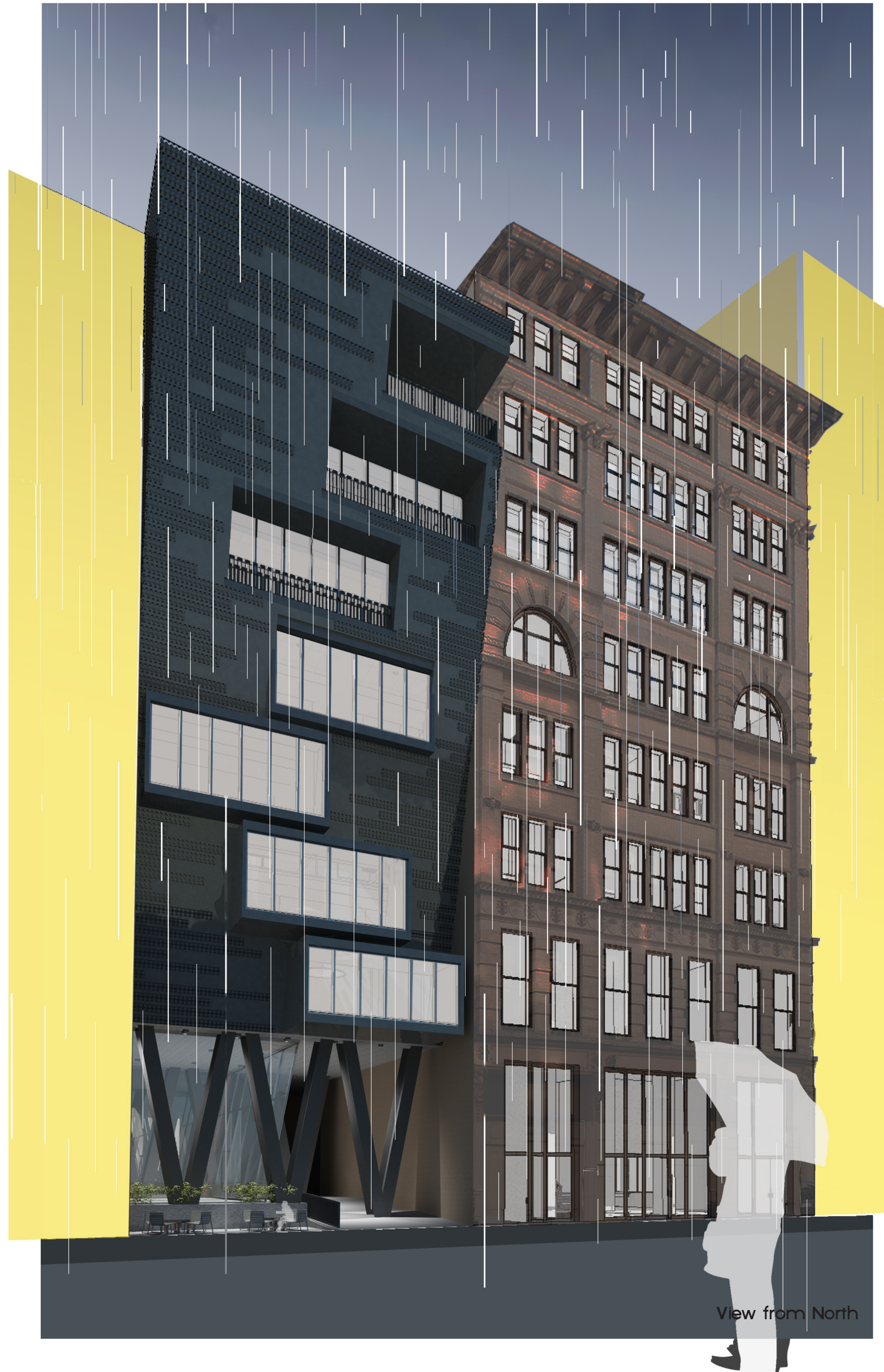
Drawing from the shape of the fire escape, the complex addition features viewports as masses and voids in the built form. These viewports of curtain-wall glass and pre-cast concrete panels are a more relevant 'balcony' as inspired by this tack-on tradition of vertical transportation.

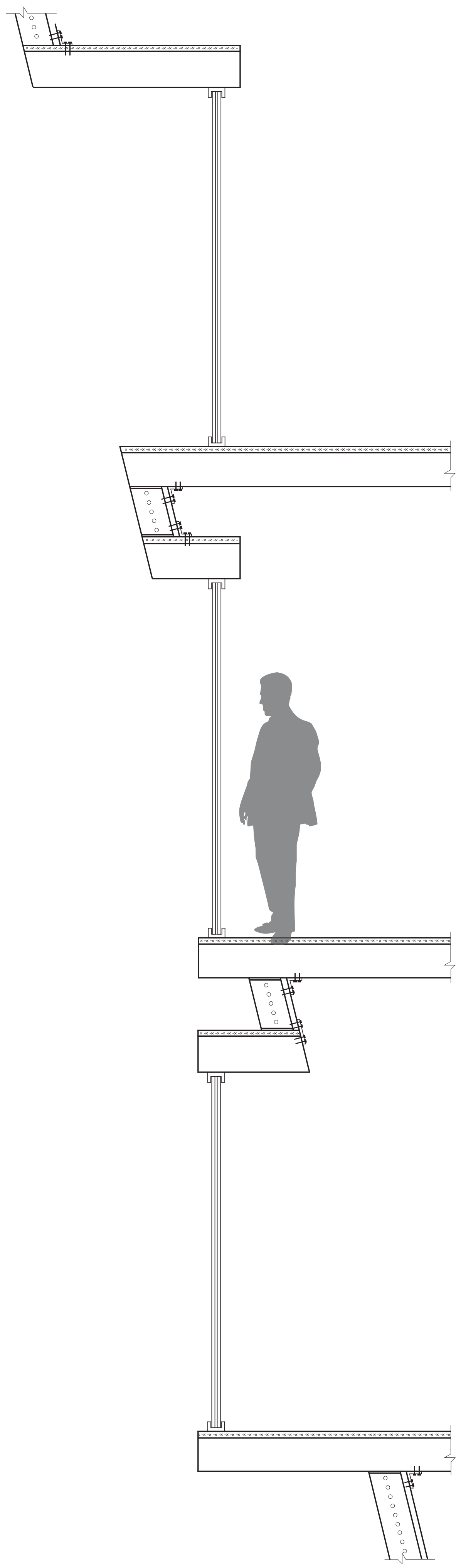
The building addition thoughtfully responds to the dumb-bell shaped tenement housing characteristic in the lower quarter of Manhattan. By pulling the form away from the center courtyards, interior spaces can better interact with view and natural lighting.

RELEVANT ANTIQUITY

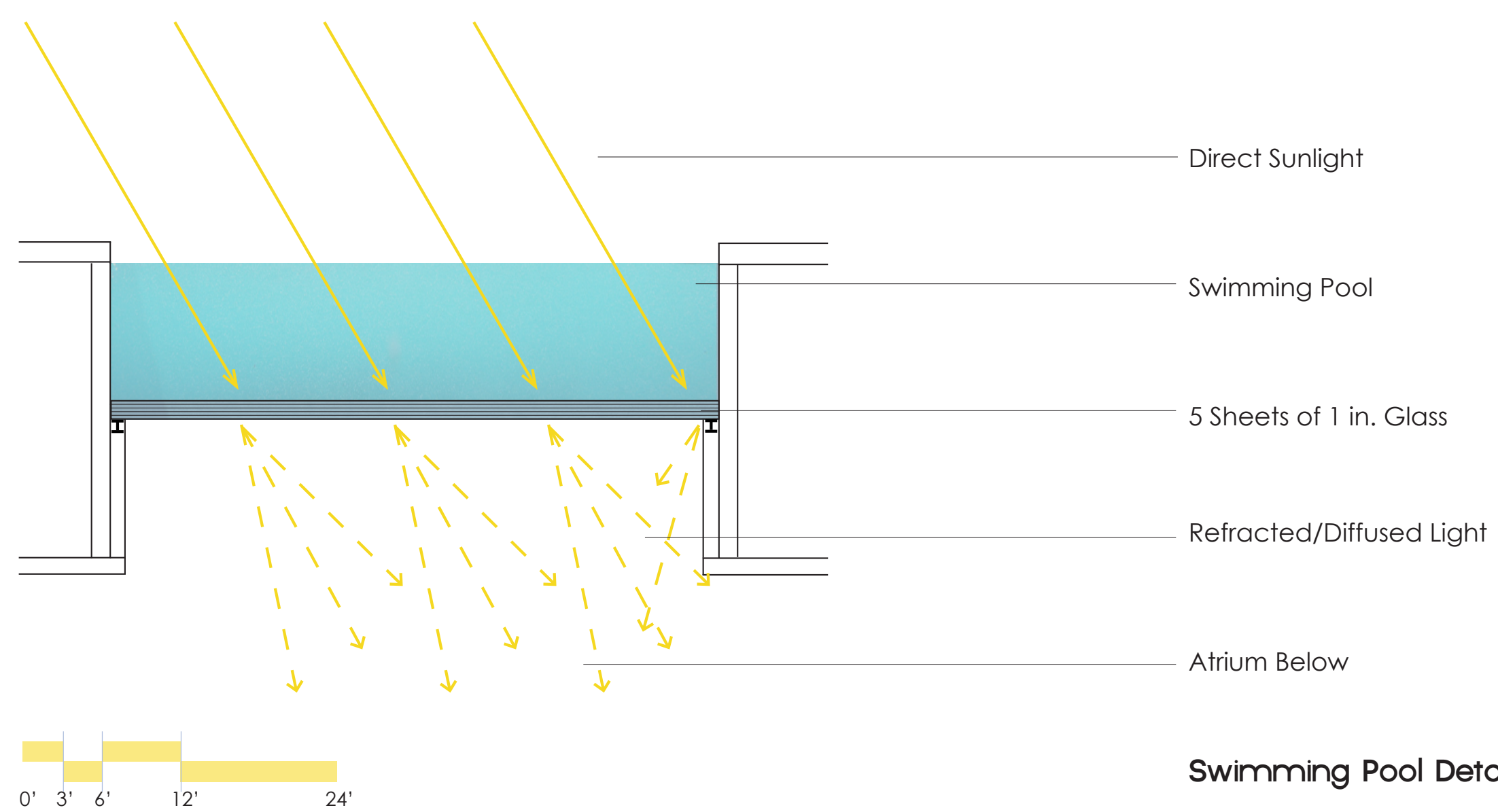
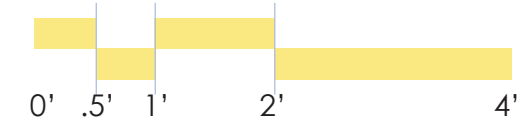
Catalyzing Tourism with Architectural Tradition

Matthew J Friesz | Bakr Aly Ahmed | Revit 2011 . Adobe InDesign . Adobe Illustrator . Adobe Photoshop

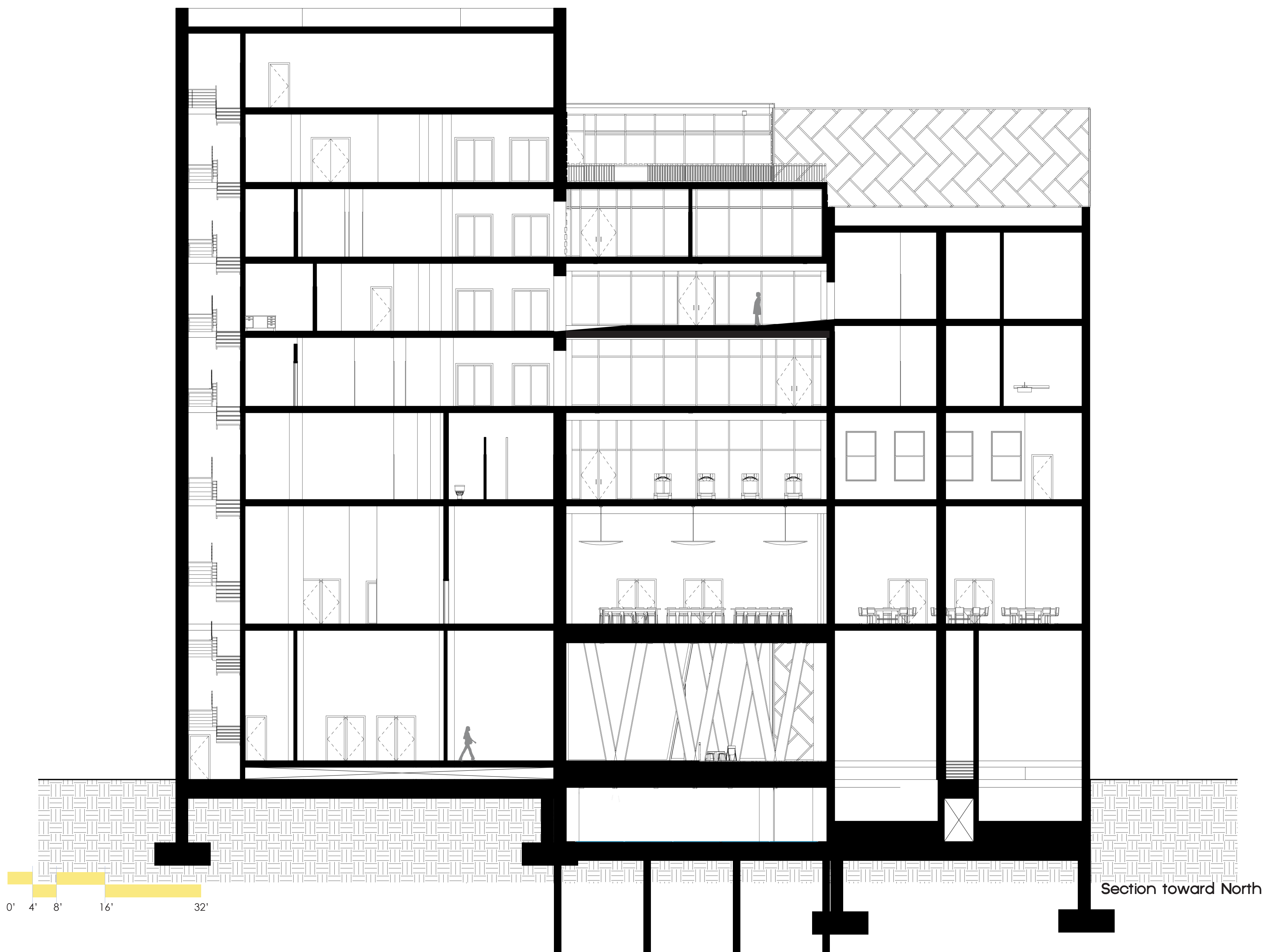
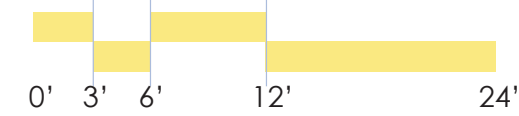




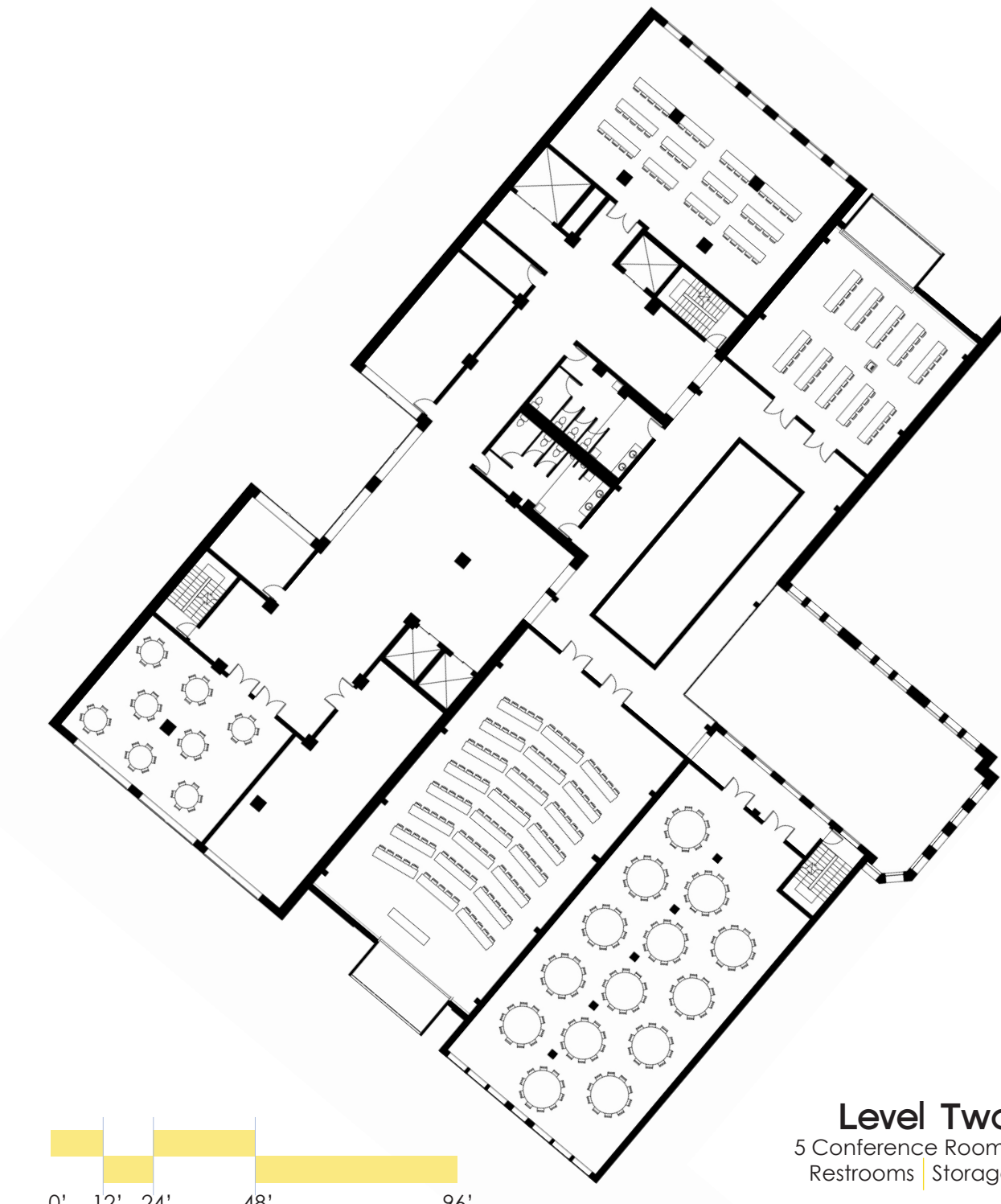
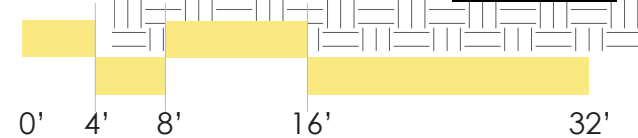
Wall Detail



Swimming Pool Detail



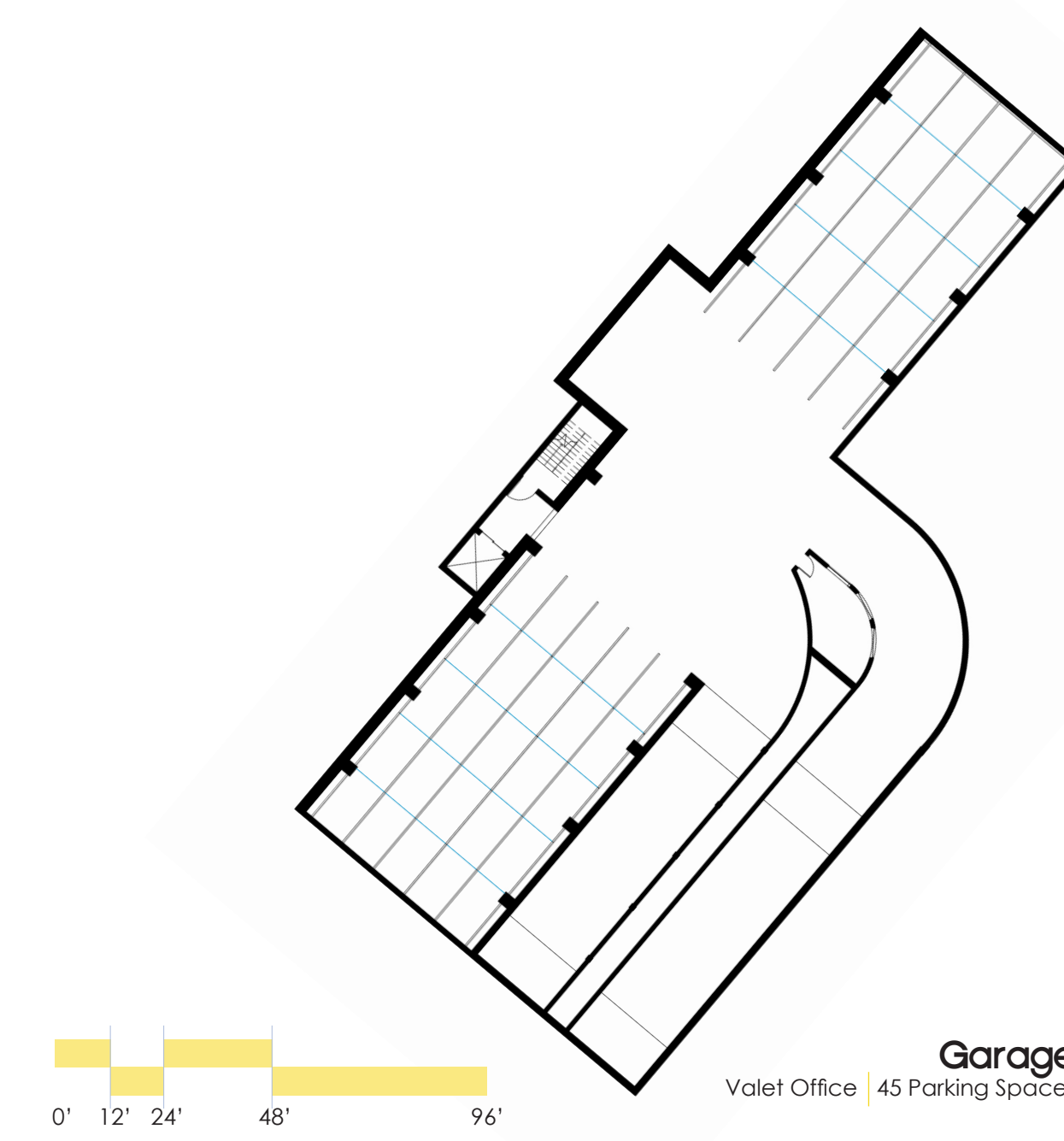
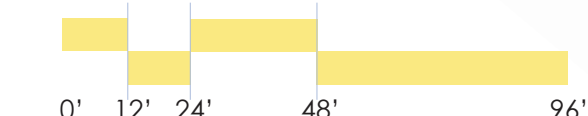
Section toward North



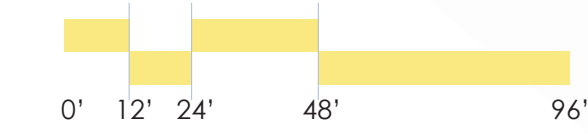
Level Two
5 Conference Rooms
Restrooms | Storage

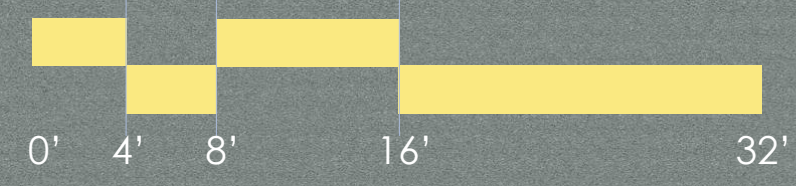


Ground Level
Atrium/Outdoor Lounge
Coffee Shop | Retail Space
Check-in Desk | Concierge
Conference Room
Receiving/Admin | Restrooms
Ramps down to Parking Garage



Garage
Valet Office | 45 Parking Spaces





Section Perspective toward West