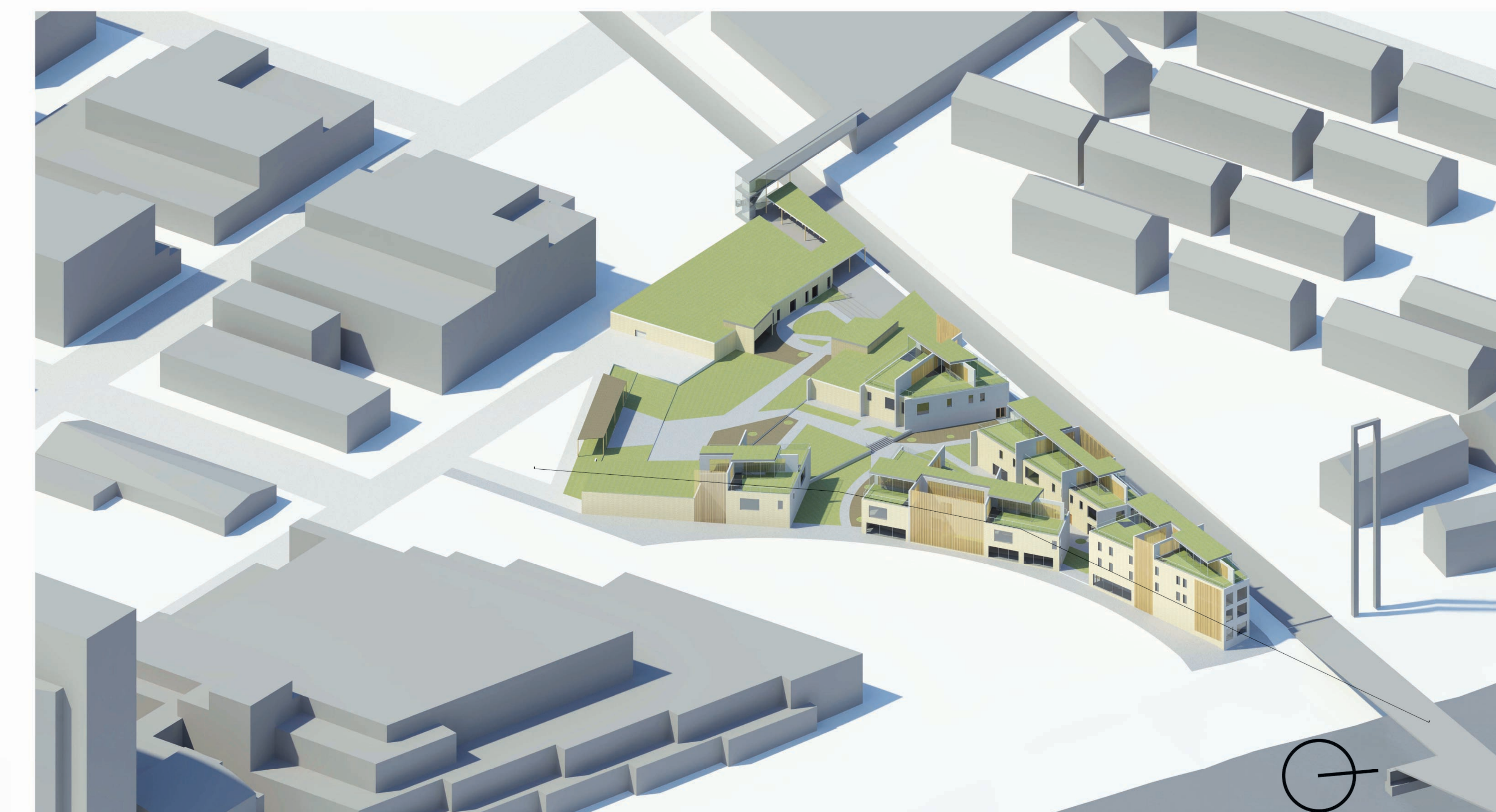




# subURBAN



# redefining urban residential



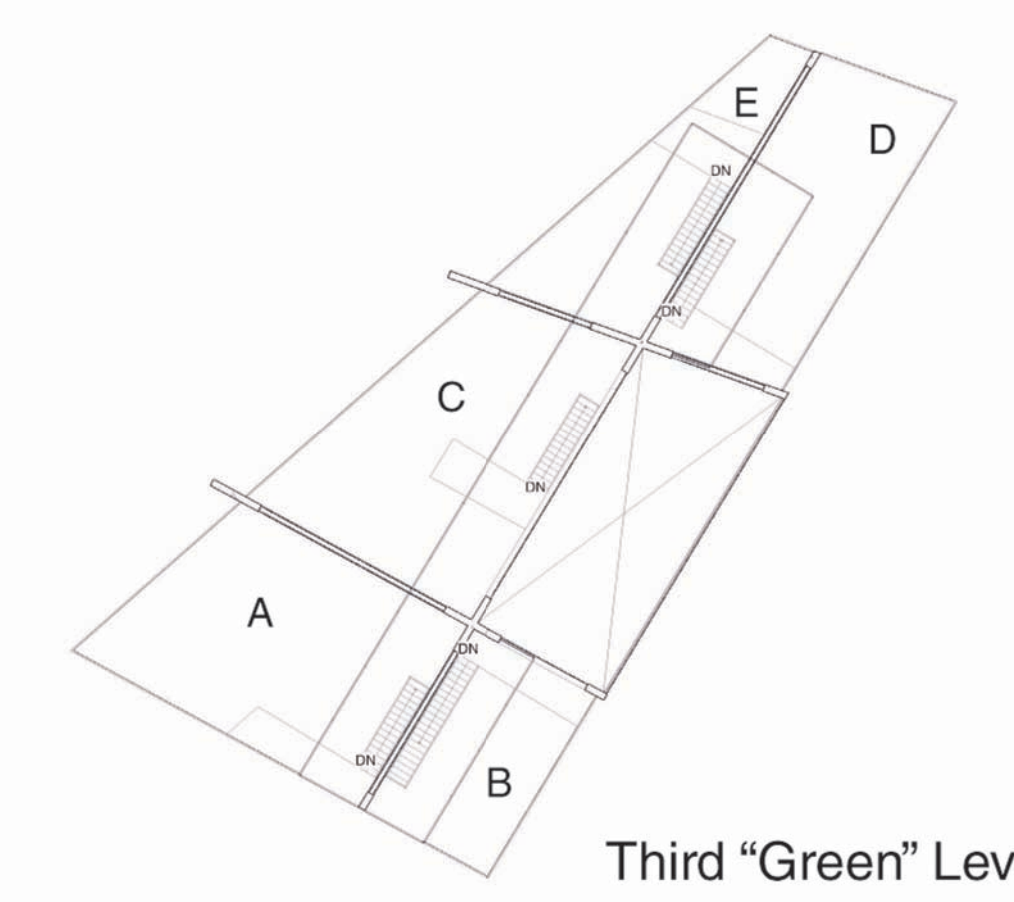
Suburban living offers a number of features which are viewed by many as a more desirable way of life for oneself and their family than residing in an urban neighborhood. Cheap and spacious houses are assembled in massive community developments which provide safe and private homes to families across America. But this lifestyle has become a detrimental yet growing way of life in the United States and around the world. These suburban communities are interconnected by roads and highway systems which are heavily reliant on fossil fuels and the automobile. Coupled with contemporary zoning ordinances which segregate the functions of the city, the majority of citizens are forced to rely on the automobile as the primary, and sometimes only, form of transportation. This has led to a rise in health and environmental problems including obesity and pollution.

In order to mitigate the effects of suburban sprawl in the United States, new forms of living must be presented to the public in an attempt to strengthen the core of these greater metropolitan areas. Located in Minneapolis, Minnesota, this project focuses on one such development which embraces a new form of community living and residential architecture. Blending site functions such as a park, residential units, and retail and dining structures, spaces provide places for activity throughout the day. Alternative to automobile commuting is encouraged by the site itself by becoming a transit hub which connects to the local city bus system as well as the new 888 Northstar rail line which connects the city of Minneapolis to the northern suburbs and beyond.

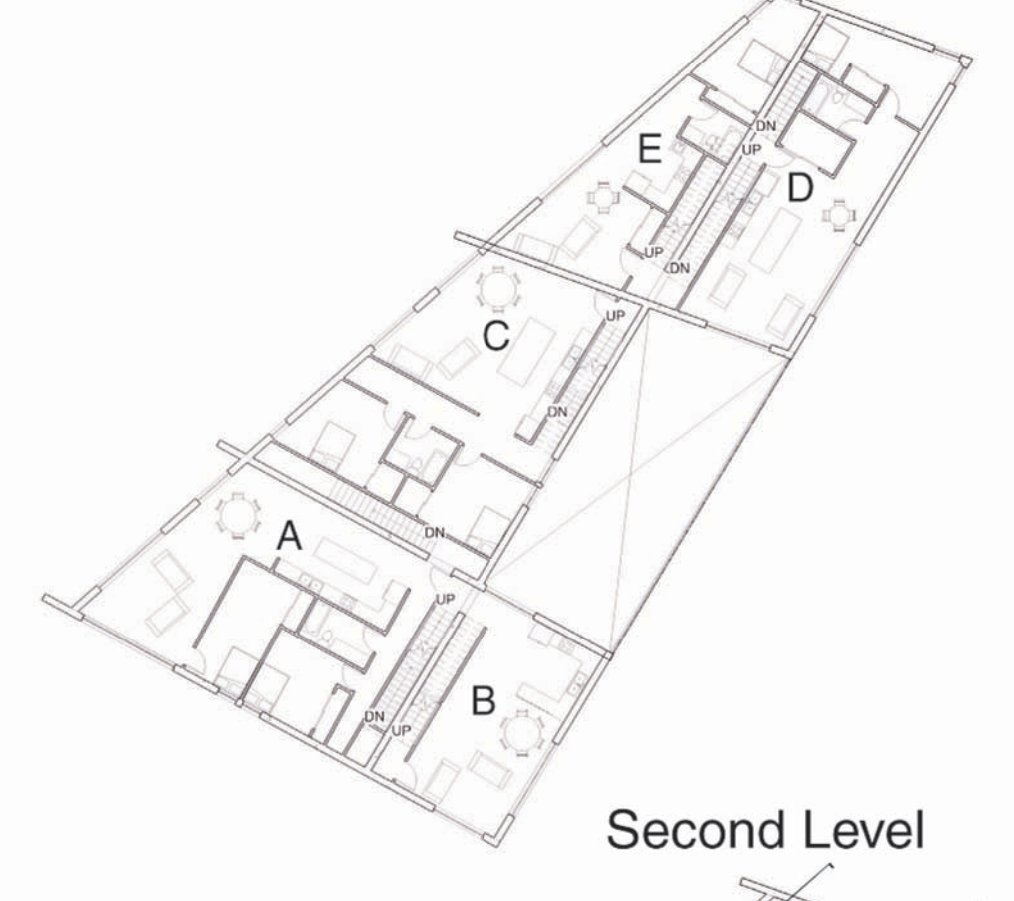
### Sample Unit:

#### Unit Four

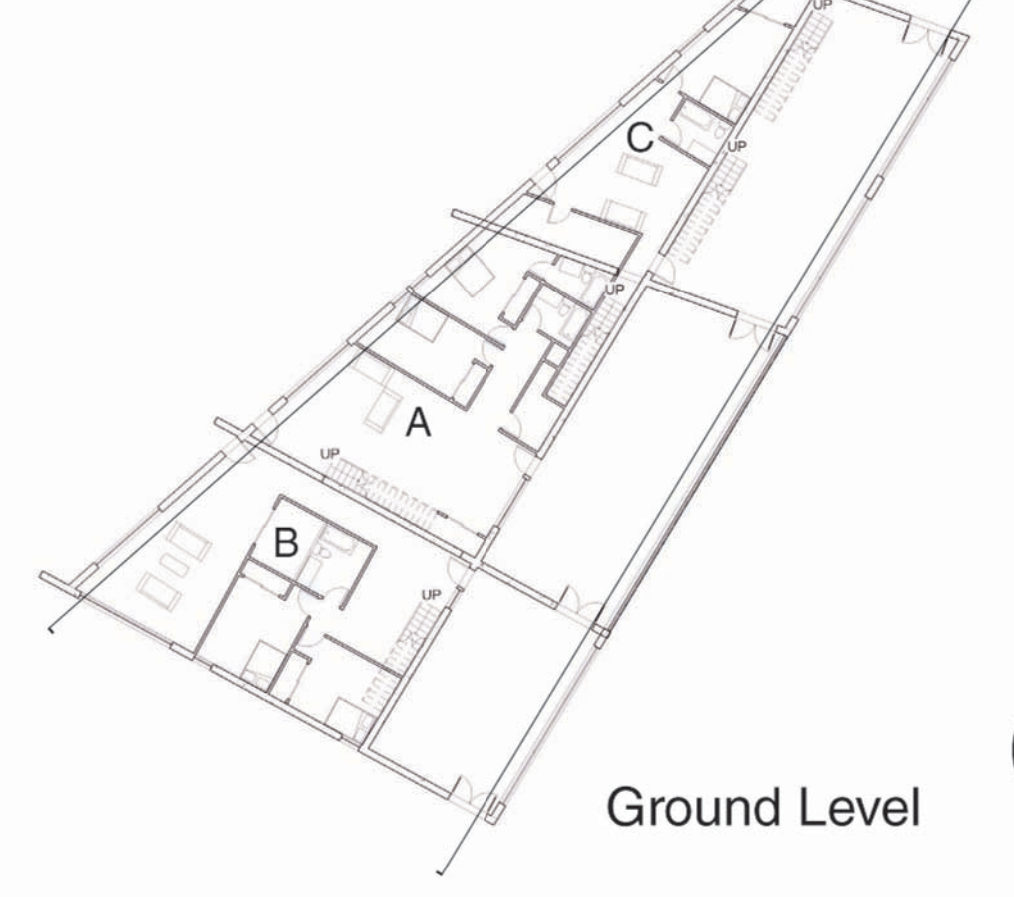
- A - 4 Bedroom Dwelling
- B - 3 Bedroom Dwelling
- C - 2 Bedroom Dwelling
- D - 1 Bedroom Dwelling
- E - Efficiency Dwelling



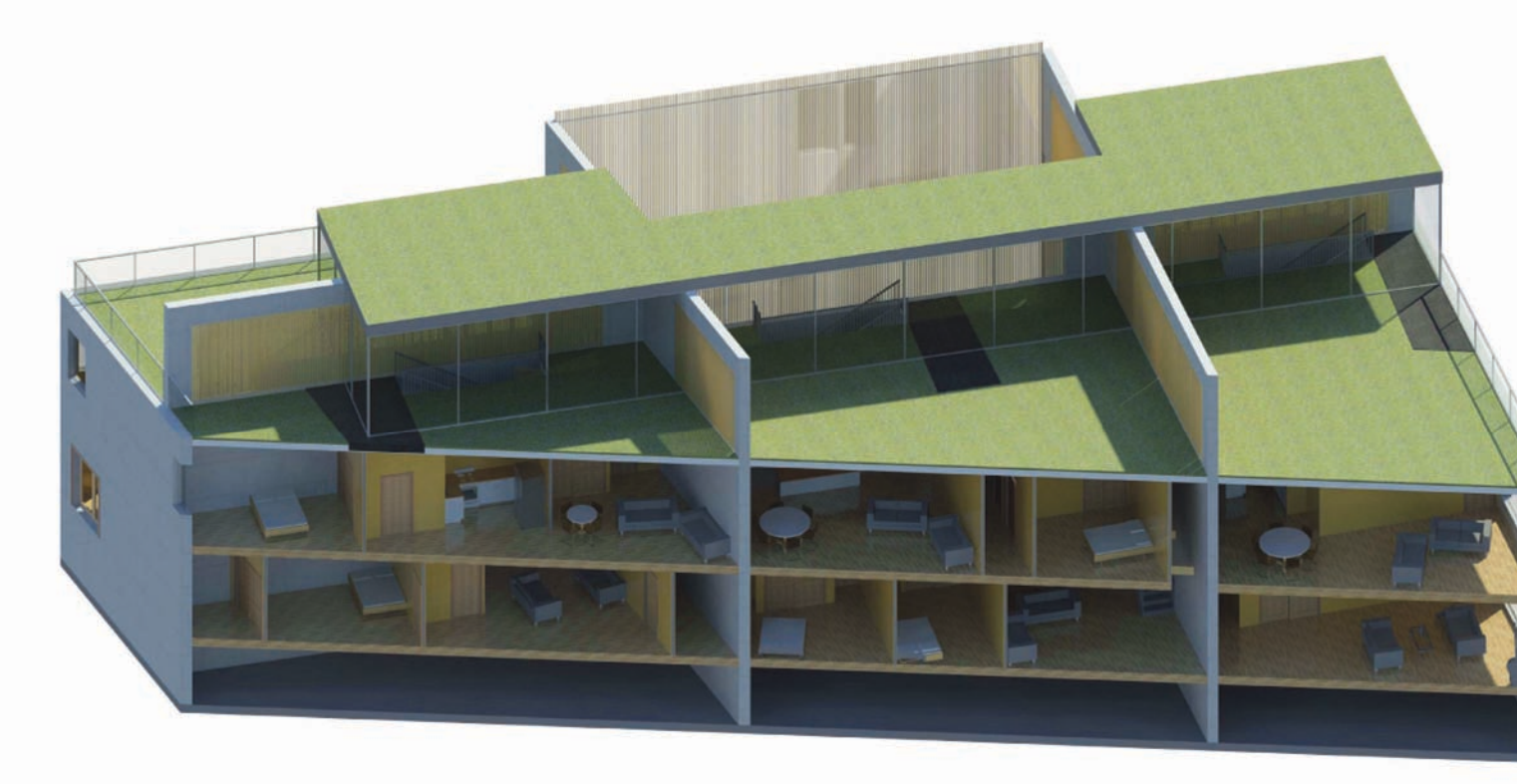
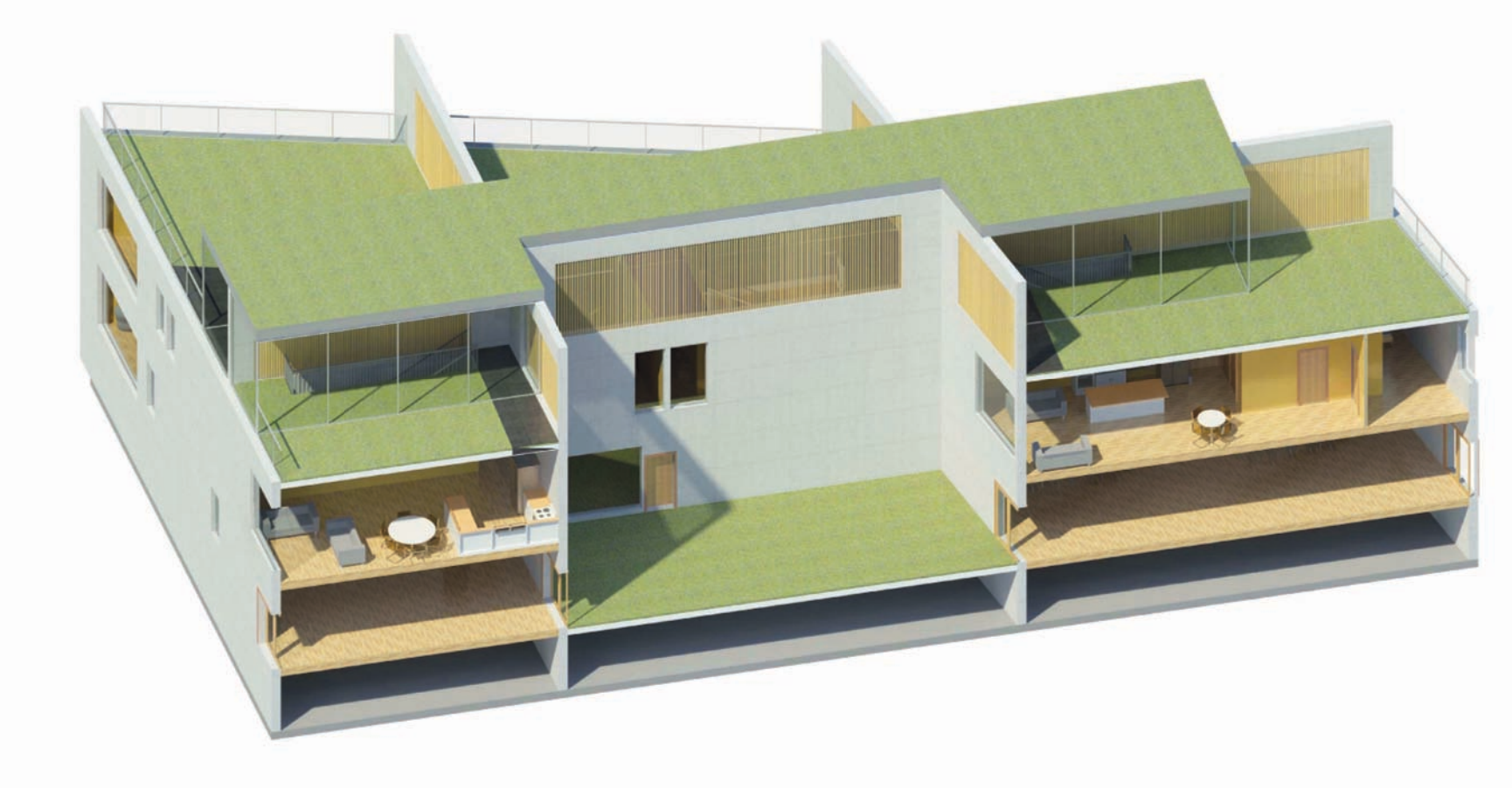
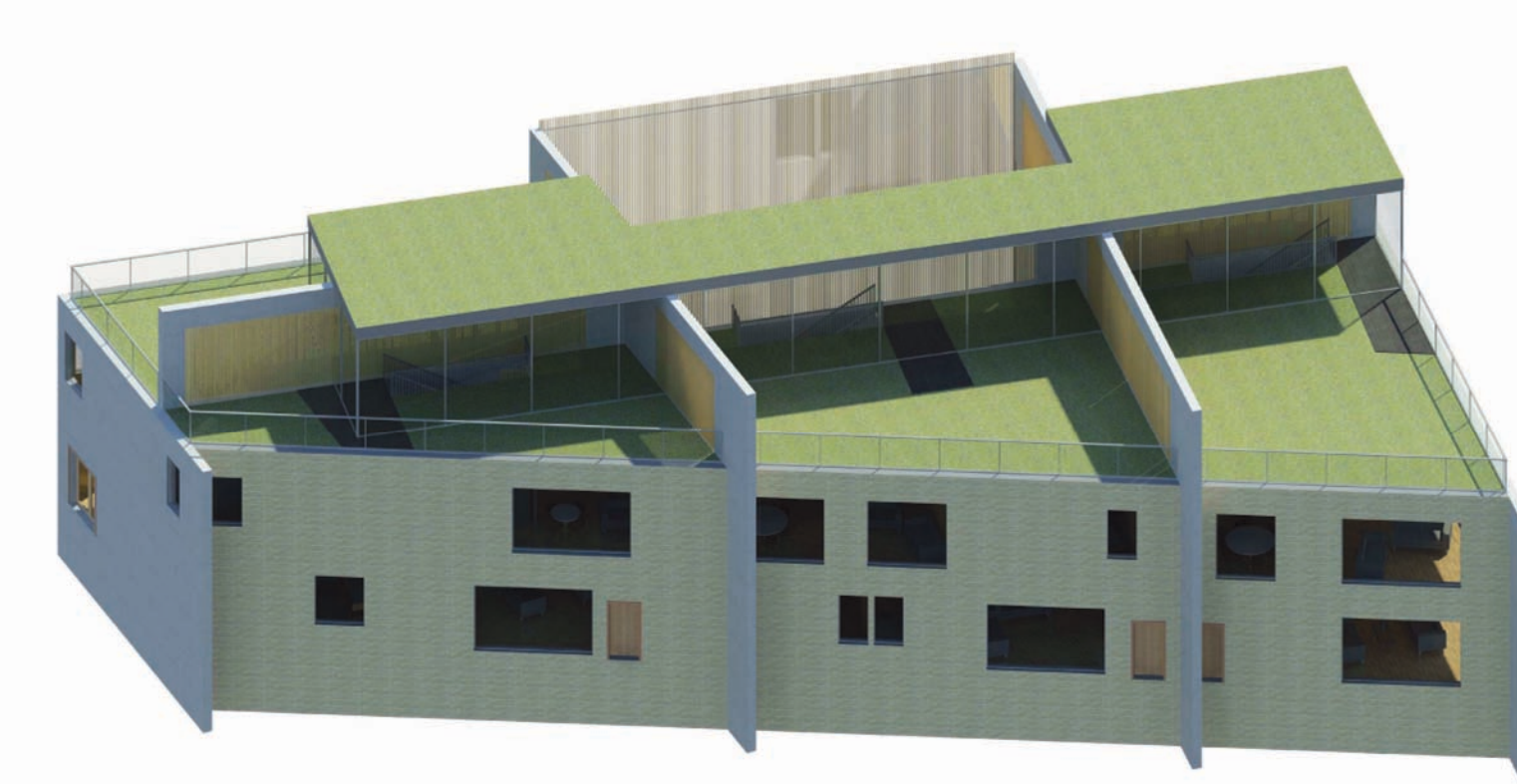
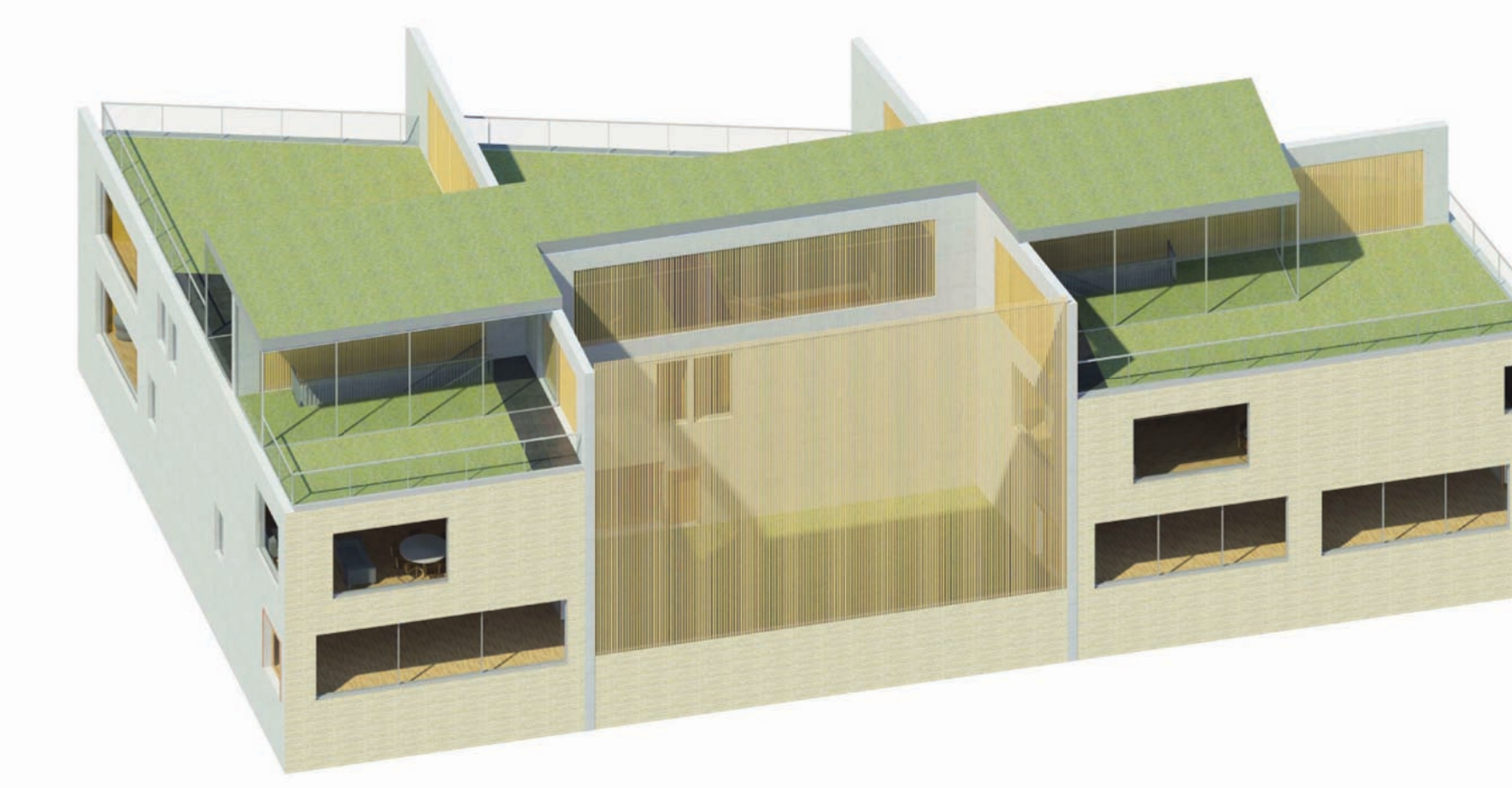
Third "Green" Level



Second Level

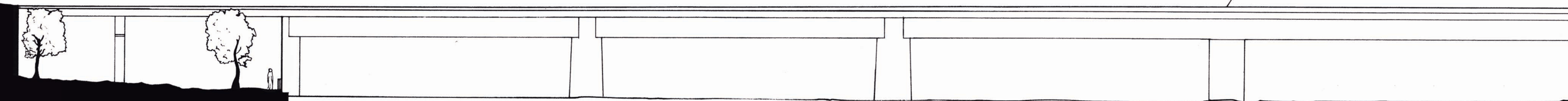


Ground Level



Unit Four Axonometrics

The residential units are designed to be an alternative to current trends in suburban residential design. These residential structures are subdivided by a superstructure of cast concrete walls which define the interior living quarters. Each dwelling inhabits multiple floors which adds additional depth to the living unit, and the largest units shift both vertically and horizontally to create additional views out toward the community and surrounding city. On the top floor of each unit the inhabitants have individual outdoor spaces that are divided by the concrete walls and wooden slats which can open up to one another in order to maintain privacy with the option of open interaction with neighboring units. A central courtyard and adjacent shared flex and bicycle storage spaces allow for additional opportunities for social gatherings and community interaction.



Plans & Section - 1"=16'

