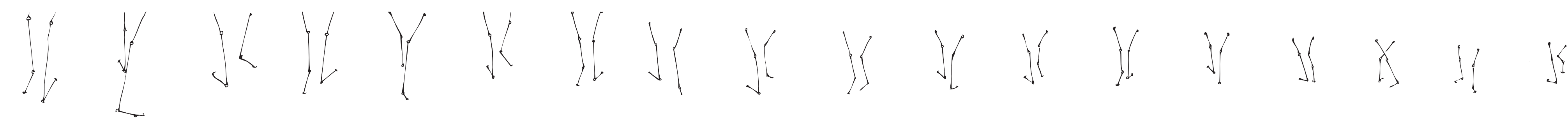
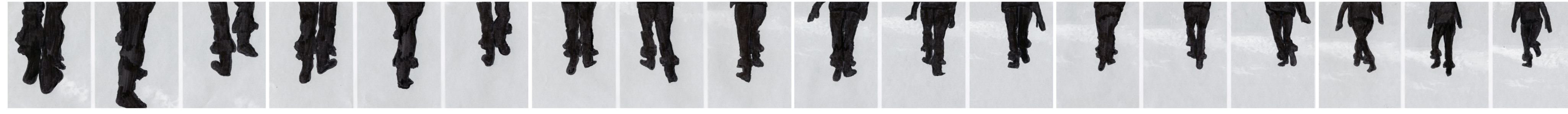


ACT: 1

Study of body movement augmented by site

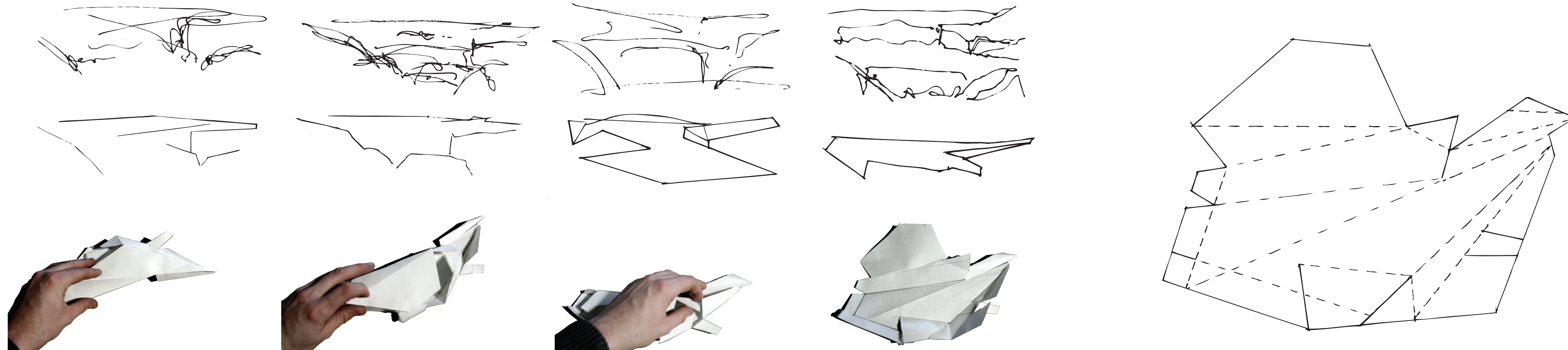
1. Film visitor walking up rocky hill with snow
2. Trace cinematic frames
3. Create a chronophotograph by aligning tracings in one drawing
4. Build a model from chronophotograph



ACT: 2

Study of dynamic/static boundary condition

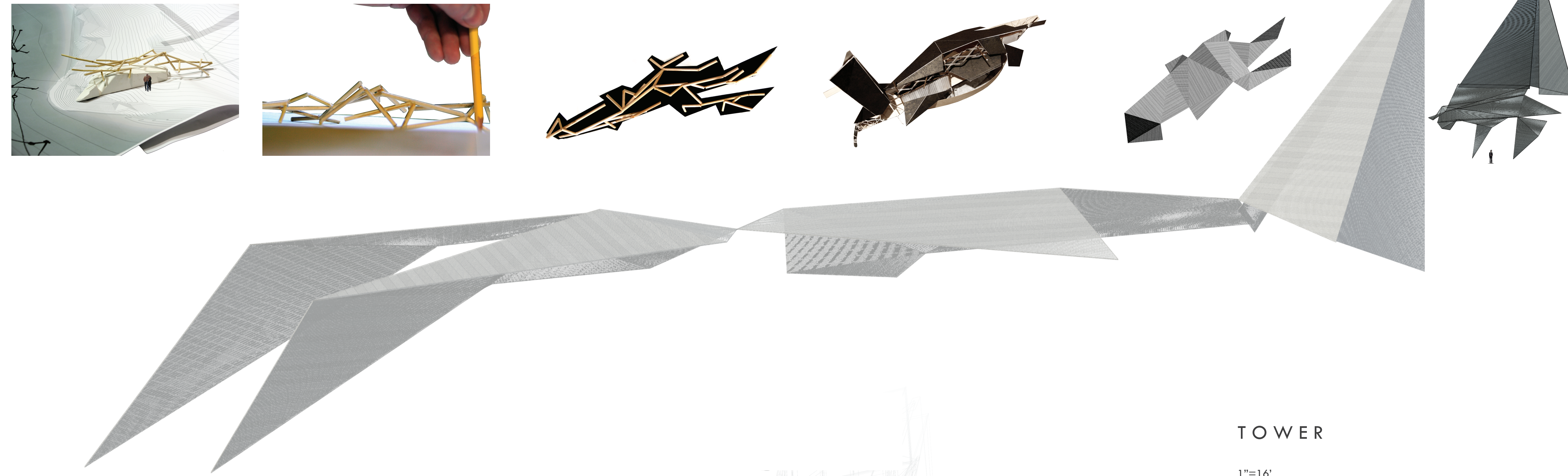
1. Draw the space between waves and rock in three second durations
2. Trace drawings using a straightedge
3. Create a folded paper model from traced drawing
4. Unfold model to create sewing pattern
5. Cast model from formwork created by sewing pattern



ACT: 3

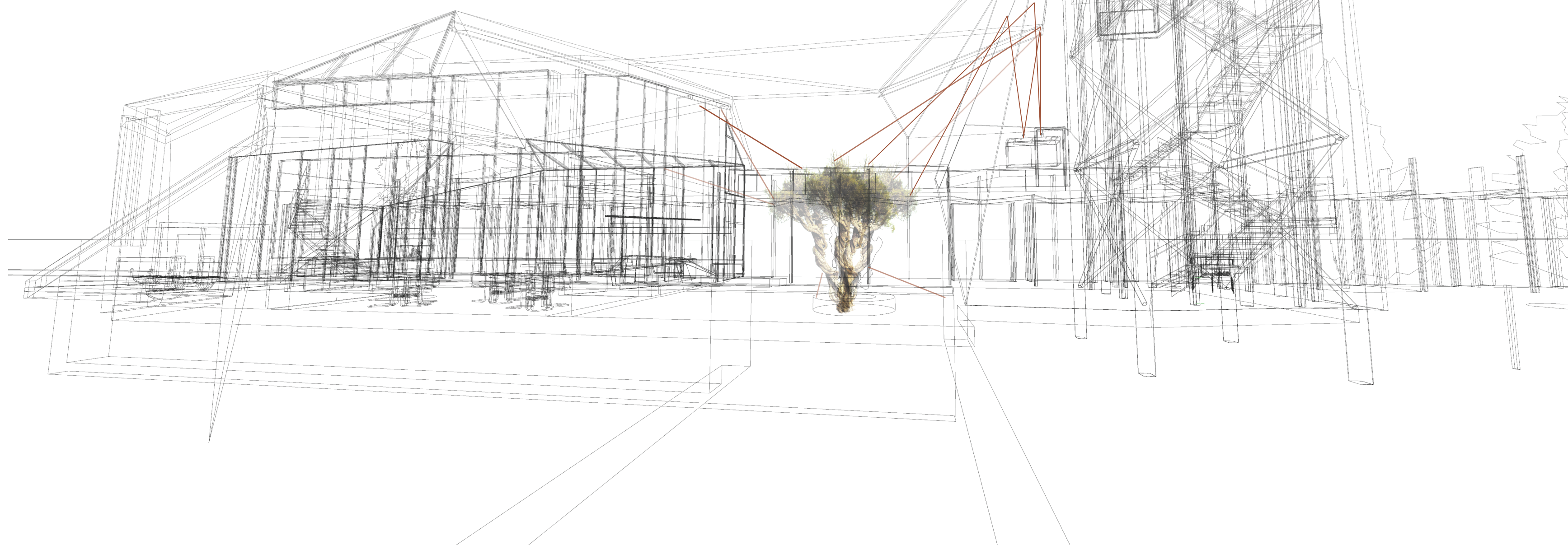
Scale and combine models from acts 1 & 2

1. Scale objects from 1:1 to 1"=30' on site map
2. Trace the edge condition of act 1 model
3. Collage folded roof condition on conceptual model
4. Translate into digital roof condition



TWITCHING GARDEN

A garden of the sacred and profane, it began as a question of instilling myth. The witch tree, a 400 year old cedar tree clinging to a rocky ledge of Lake Superior a short drive north of the site is held sacred by the Ojibwe Tribe and is off limits to tourists. What if the tree's slow, struggled growth against the elements could be fast-forward and made visible? Collected data from visiting scientists is input into a machinic system connected to cables tethered to a cedar tree, the quick jerks and twitches frustrate the tourist/amateur photographer, desperate to capture its stunning movements



SAUNA

1"=8'

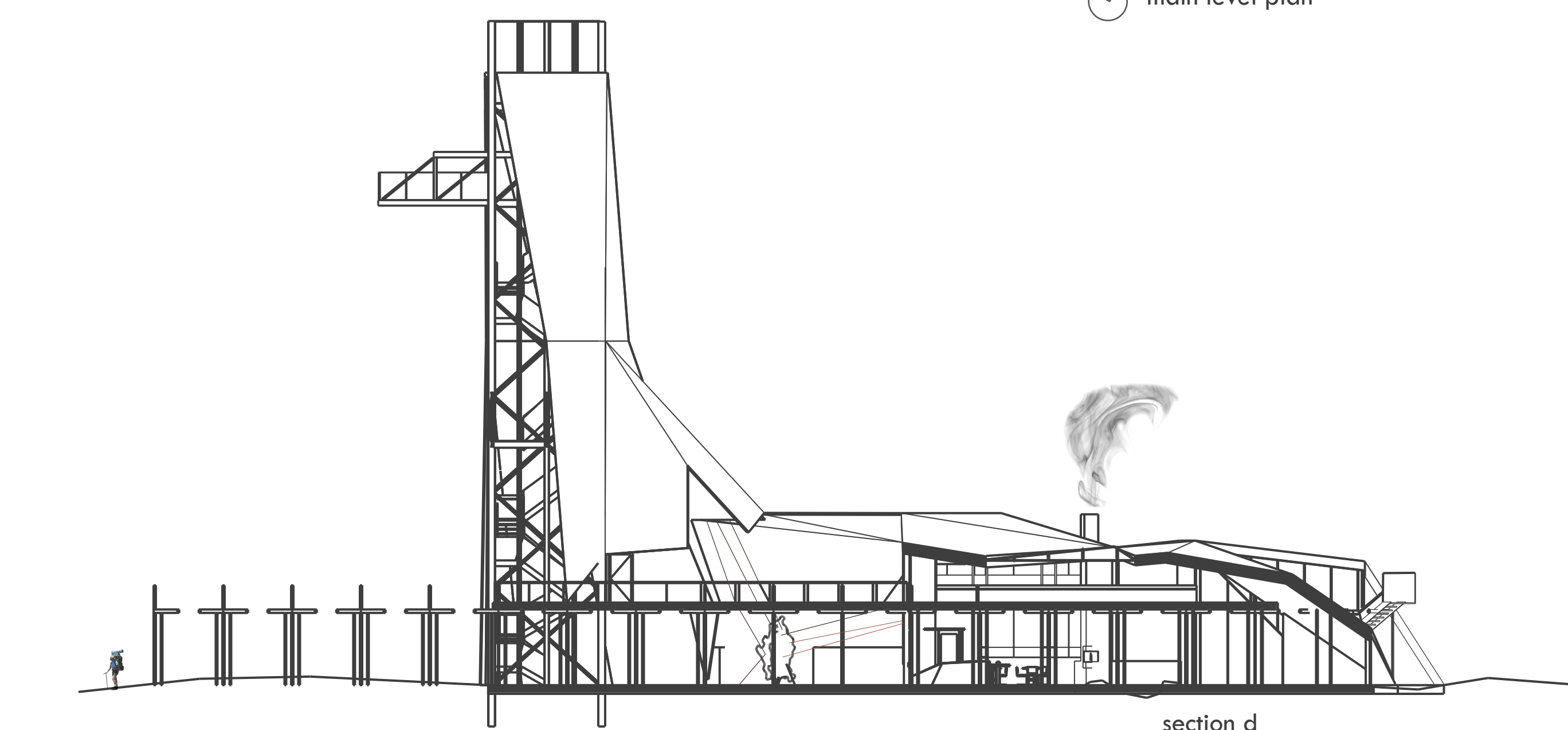
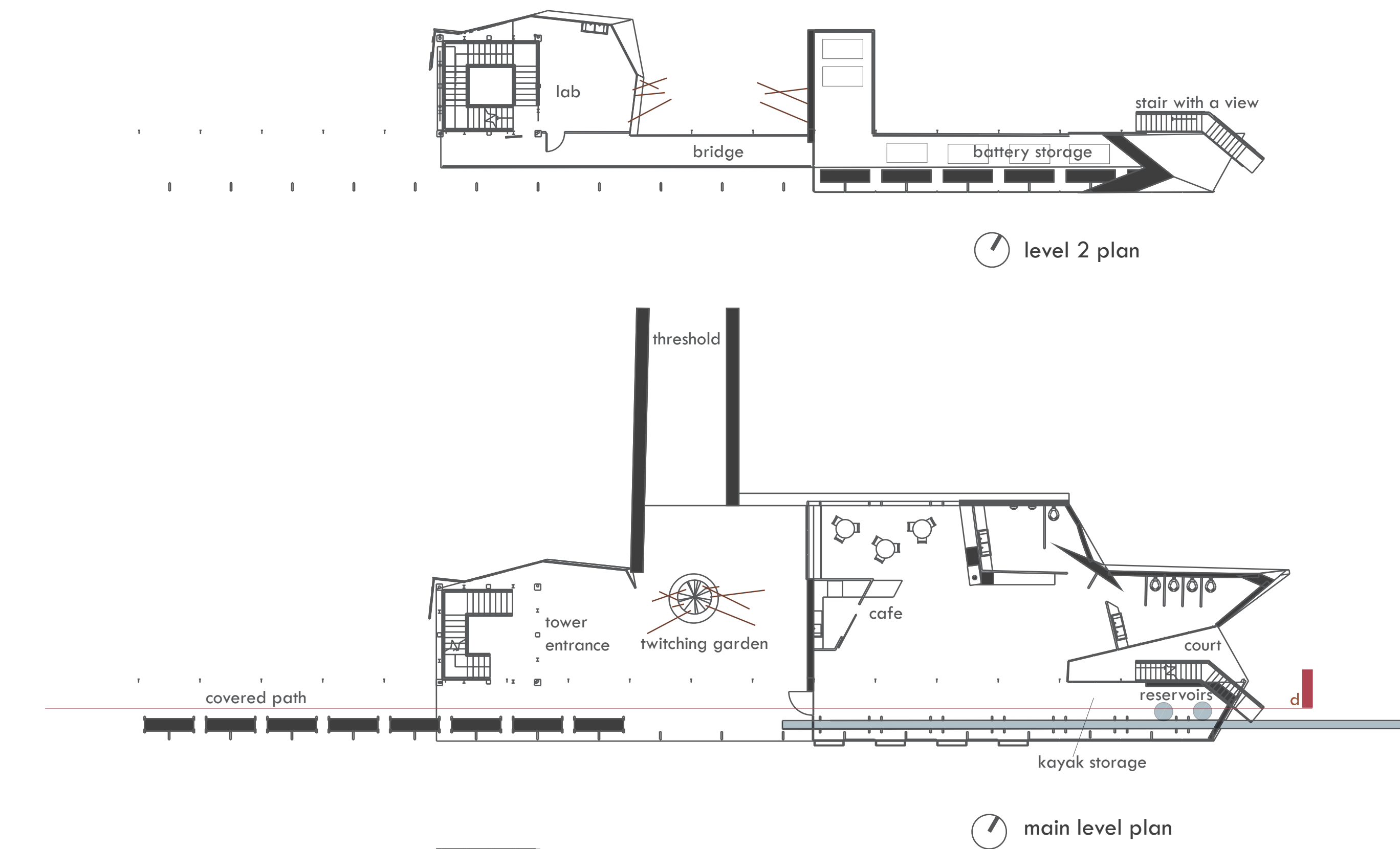
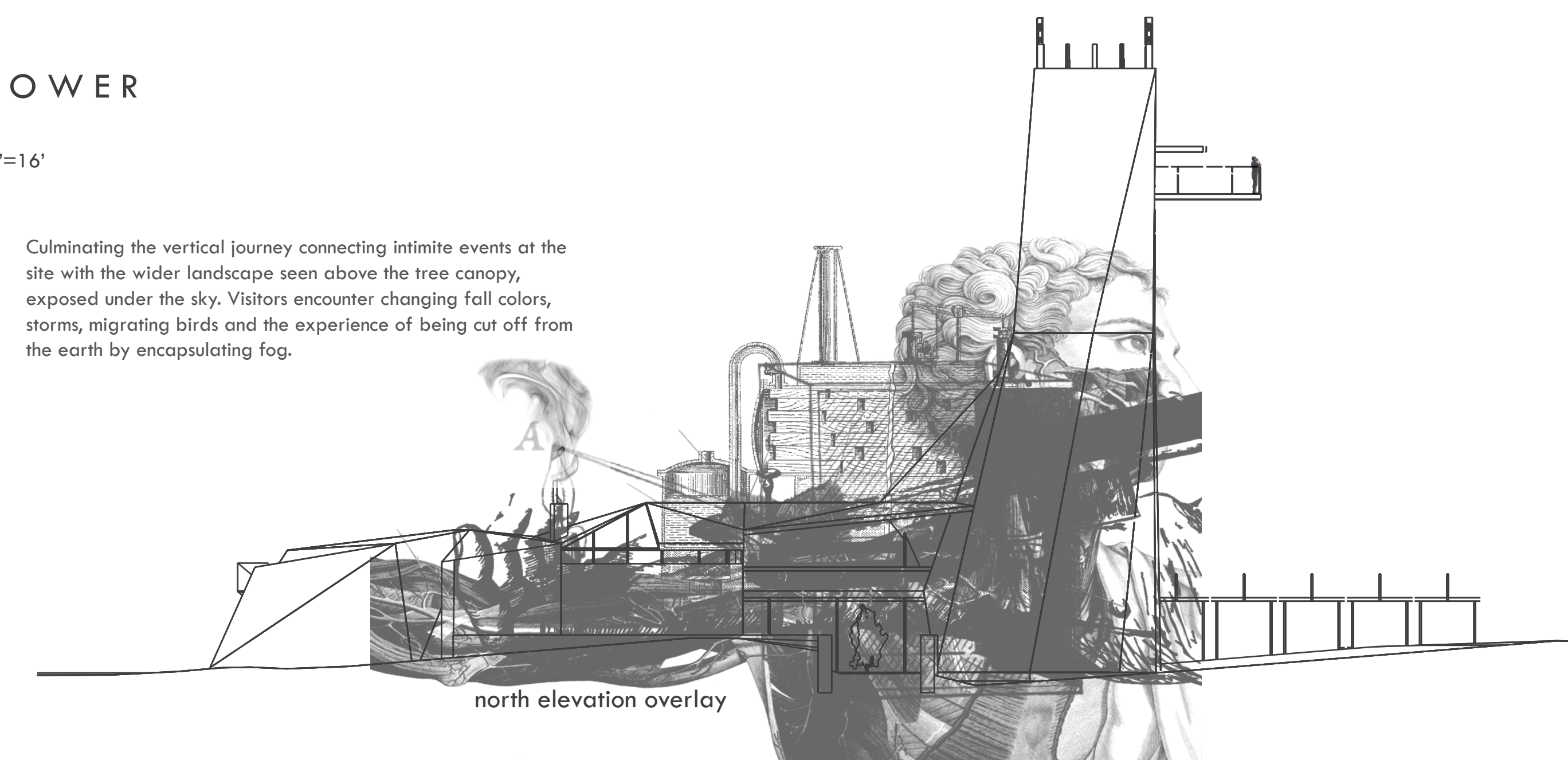
Culminates the horizontal journey toward the sun fusing with the horizon. Sited at the southernmost peak of the site and therefore most exposed, the ritual of purification is a local tradition passed down from scandinavian ancestors. At times the small structure is encapsulated in ice and being hit by waves, allowing the possibility to experience ice, steam and fluid water simultaneously. At other times it is cut off from access due to violent storms, emphasizing the ephemeral flux and silence of nature.



TOWER

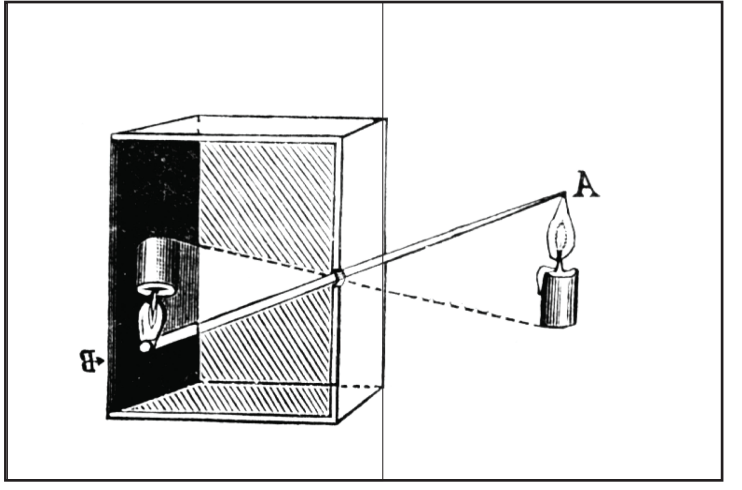
1"=16'

Culminating the vertical journey connecting intimate events at the site with the wider landscape seen above the tree canopy, exposed under the sky. Visitors encounter changing fall colors, storms, migrating birds and the experience of being cut off from the earth by encapsulating fog.

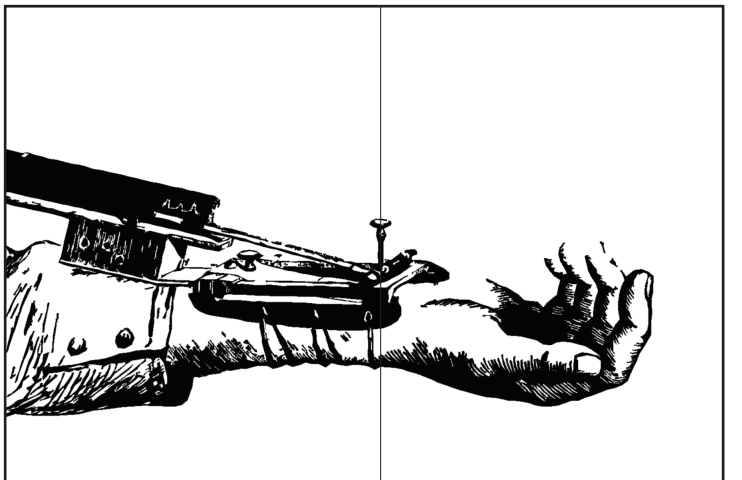


IDEOGRAM

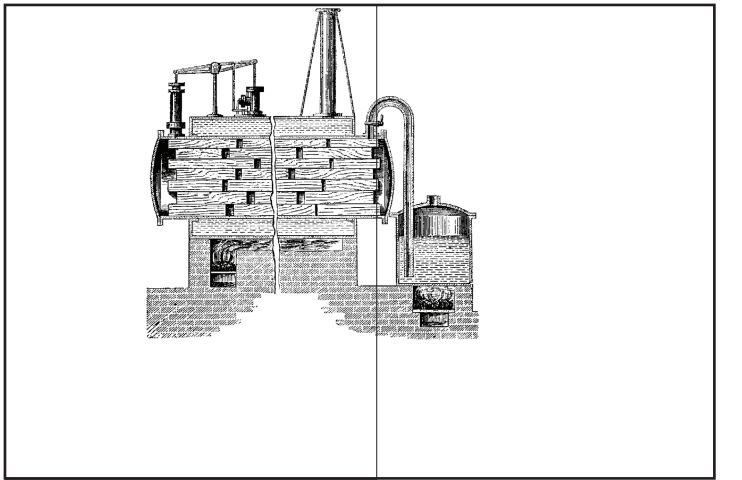
A parti idea generated by the overlay of a history of tools used to see, examine, record and trace.



Fizyka's 1919 Camera Obscura



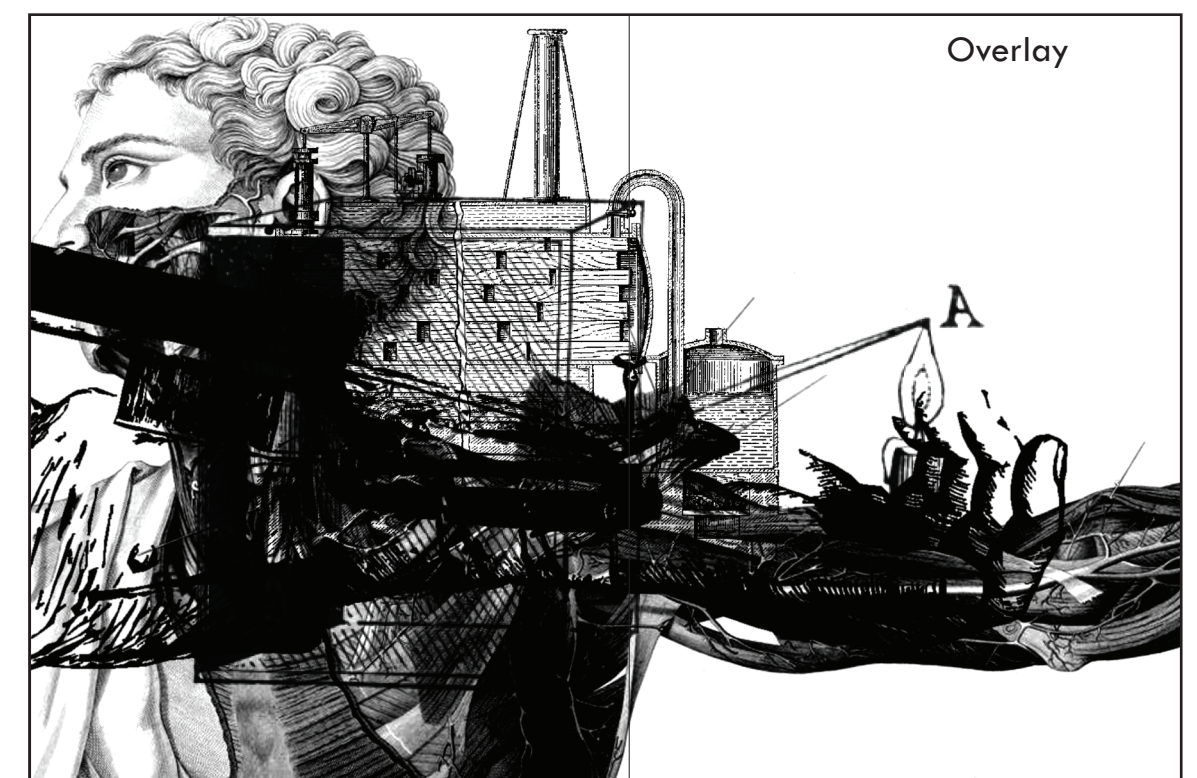
Marey's Sphygmograph to record pulse



Pastuchen's tar impregnating wood machine



Skin dissection



Overlay