

# KEEP NORTH DAKOTA CLEAN

## What Do You See When You Look At Your Community?

Bob Askew, Extension Horticulturist (retired)

NORTH DAKOTA STATE UNIVERSITY  
SEP 21 1988  
SERIALS DEPT.  
LIBRARY

Did you ever take a good look at your community or neighborhood? Were you proud of what you saw? Or did you feel ashamed, depressed or guilty? It's only natural for everyone to feel that his own community is the very best, but if yours doesn't fit this role, you can help improve it.

Beauty has become a new national and local purpose and cannot be confined to your own yard and garden. Your entire community can and should become more beautiful.

If our communities and state are to remain beautiful and become even more attractive, it is going to take the dedicated efforts of many individuals and organizations. Through cooperative effort, we can find the problem areas and then develop and carry out plans to solve these problems. Working together we can preserve and enhance the beauty of our communities and state.

### Why the Urgent Need for Action?

Once our landscape is scarred and our streams polluted, it's difficult to undo the wrong. Nobody likes this desecration, but it continues unless individuals and groups become indignant enough to do something about it.

### What Can a Community Beautification Program Give You?

- 44.3 ✓ 9 • A more attractive environment in which to work and live.
- 18 ✓ 8 • Better health and recreation.
- 188 ✓ 8 • Increased real estate values.
- 1.951 ✓ 8 • Aid in attracting tourists.
- Improved civic pride.
- Improved community attractiveness for prospective business firms.
- Keep the land in better condition for future use.
- Inspiration to others.

### Survey Your Community

A sound and basic first step is to make a candid survey of your community. Look at it as a visitor would. Look for little things, such as trees and broken pavement and accumulations of litter, objectionable signs, and other eyesores. Look for big things, such as unimproved public areas that could be landscaped, or properties owned by utility companies which could be transformed into spots of beauty. Mark down the bad things, and the good things, the opportunities for new beauty/landmarks that should be preserved.

Look with fresh, critical eyes, no matter how painful that may be. Try to imagine that it is the first time you have seen your community. As an observer, note that blight and beauty have the same quality of infection. They spread, inoculate the neighborhood with either one and you will soon see the contagious effect. Blight begets blight. Beauty spreads beauty.

This survey has great immediate and future importance. It can suggest first projects. And it can provide the basis for your program for years to come.

Three people in a car can make a simple "windshield survey." They should be equipped with a map for making notes. Set up your own code key to indicate things you see. One symbol can mean an accumulation of litter, another dead or dying trees, another a dilapidated building. Study your building and safety, fire and health codes, and indicate possible violations. Mark down things the City should do and is not doing.

It is good to have a camera along. Many communities have been shocked into action by films and photographs.

### Plan a Step-By-Step Program

It is especially important for beginners to tackle only those projects they can handle quickly and



## NDSU EXTENSION SERVICE

North Dakota State University, Fargo, ND 58105

with their present strength and personnel. One success builds on another. Thus, the program constantly gains in strength, prestige, and momentum. An initial failure could be a stunning setback.

The first project might be converting an eyesore into a spot of beauty. It might be a limited tree planting program. It might be a cleanup drive.

## Community Beautification Improvement Checklist

Name of Community \_\_\_\_\_ Dates Checked \_\_\_\_\_

**In General:** "No" answer indicates a need for change.

Do the highway entrances to the community create a favorable impression on strangers? \_\_\_\_\_

Is the highway mowed, free from litter and neat in appearance? \_\_\_\_\_

Are areas adjacent to the highway free from objectionable views, junked cars, run-down fences, dilapidated buildings, dead trees, weedy vacant lots, etc.? \_\_\_\_\_

If you were a traveler, would you be pleased enough with what you see to stop, visit, eat and sleep in this community? \_\_\_\_\_

### Streets and Sidewalks:

Are streets and sidewalks free from debris, litter or weeds? \_\_\_\_\_

Are trees on the streets free from dead wood? \_\_\_\_\_

### Parks, Playgrounds, Tourist Rest Stops:

Are parks maintained in a neat, presentable condition? Is the area kept free from litter and debris? \_\_\_\_\_

Is the lawn green and inviting in appearance and mowed regularly? \_\_\_\_\_

Are trees and shrubs free from dead and diseased wood? \_\_\_\_\_

### Business Area:

Are buildings in the business area well maintained and painted? \_\_\_\_\_

Are vacant buildings adequately maintained? \_\_\_\_\_

Is the area in back of buildings free from trash, debris and weeds? \_\_\_\_\_

### Homes:

Does the appearance of the residences indicate a sense of community pride? \_\_\_\_\_

Are homes tidy and presentable in appearance? \_\_\_\_\_

Are all rundown places that spoil the appearance of the community eliminated? \_\_\_\_\_

Are vacant lots in the business area and elsewhere in town maintained in a neat condition free from trash, junk cars and weeds? \_\_\_\_\_

**School Grounds and Churches:**

Is the landscaping on the school and church grounds a credit to the institution represented and the people? \_\_\_\_\_

Does the maintenance of the school and church grounds set a good example for the children and adults to follow at home? \_\_\_\_\_

**Farmsteads:**

Are the farmsteads neat and clean? \_\_\_\_\_

Are old fence lines in disrepair? \_\_\_\_\_

Are old fences still in use or could they be dismantled? \_\_\_\_\_

Is old unused machinery scattered about the farmstead? In trees? In pasture? \_\_\_\_\_

Are abandoned cars scarring the prairie scene? \_\_\_\_\_

Are farm junk piles unkept and visible? \_\_\_\_\_

Is machinery parked in neat rows? \_\_\_\_\_

Are the farmsteads well landscaped? \_\_\_\_\_

Are weeds allowed to grow in old barnyards or feedlots? \_\_\_\_\_

Are there abandoned farmsteads in your rural community? \_\_\_\_\_

Are farmsteads and field shelterbelts free of dead or declining trees? \_\_\_\_\_

Is there room for additional tree plantings for rural beautification in your community? \_\_\_\_\_

Could barnyards and feedlots be screened by tree plantings? \_\_\_\_\_

Are feedlot fences in good repair? Painted? \_\_\_\_\_

**One and Two Room Rural School Houses:**

Is your unused, one-room school boarded-up and abandoned? \_\_\_\_\_

Could it be sold or moved for salvage? \_\_\_\_\_

If your rural school building is used for voting or other township purposes:

Is the building painted and in good repair? \_\_\_\_\_

Could this school be beautified by tree plantings? \_\_\_\_\_

Are the grass and weeds mowed regularly during the summer? \_\_\_\_\_

Are the grounds free of litter? \_\_\_\_\_



1. One dilapidated building can spoil your downtown.



2. City entrances are important.



3. Half up, half down.



4. Abandoned brick school presents danger.



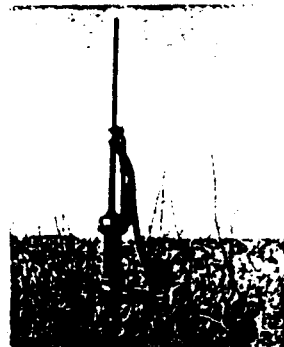
5. Abandoned one-room school.



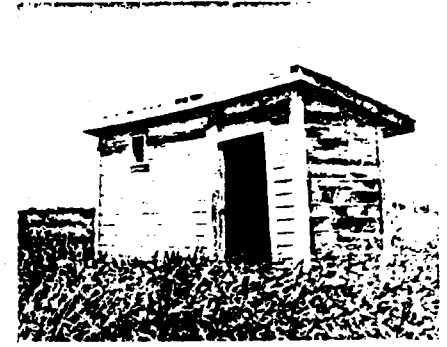
6. Old fence lines prevent mowing.



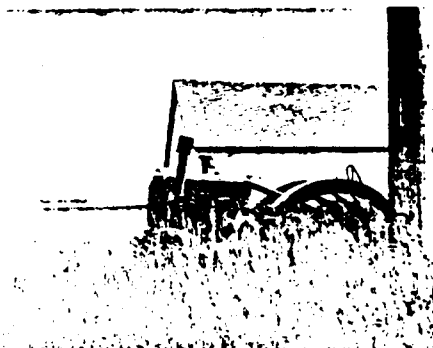
7. Abandoned.



8. Abandoned wells can be hazardous.



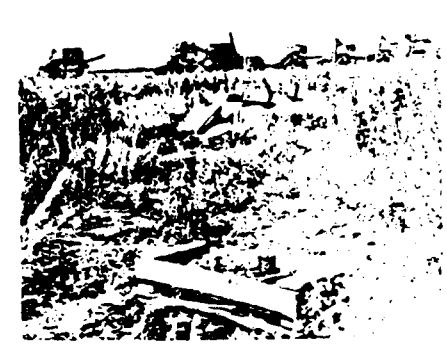
9. Out-moded.



10. A museum piece out of place.



11. Raze or restore.



12. Machinery-combine graveyard.

## Helping You Put Knowledge To Work

NDSU Extension Service, North Dakota State University of Agriculture and Applied Science, and U.S. Department of Agriculture cooperating. William H. Pietsch, Director, Fargo, North Dakota. Distributed in furtherance of the Acts of Congress of May 8 and June 30, 1914. We offer our programs and facilities to all persons regardless of race, color, sex, religion, age, national origin, or handicap; and are an equal opportunity employer.