

8
9
14.3

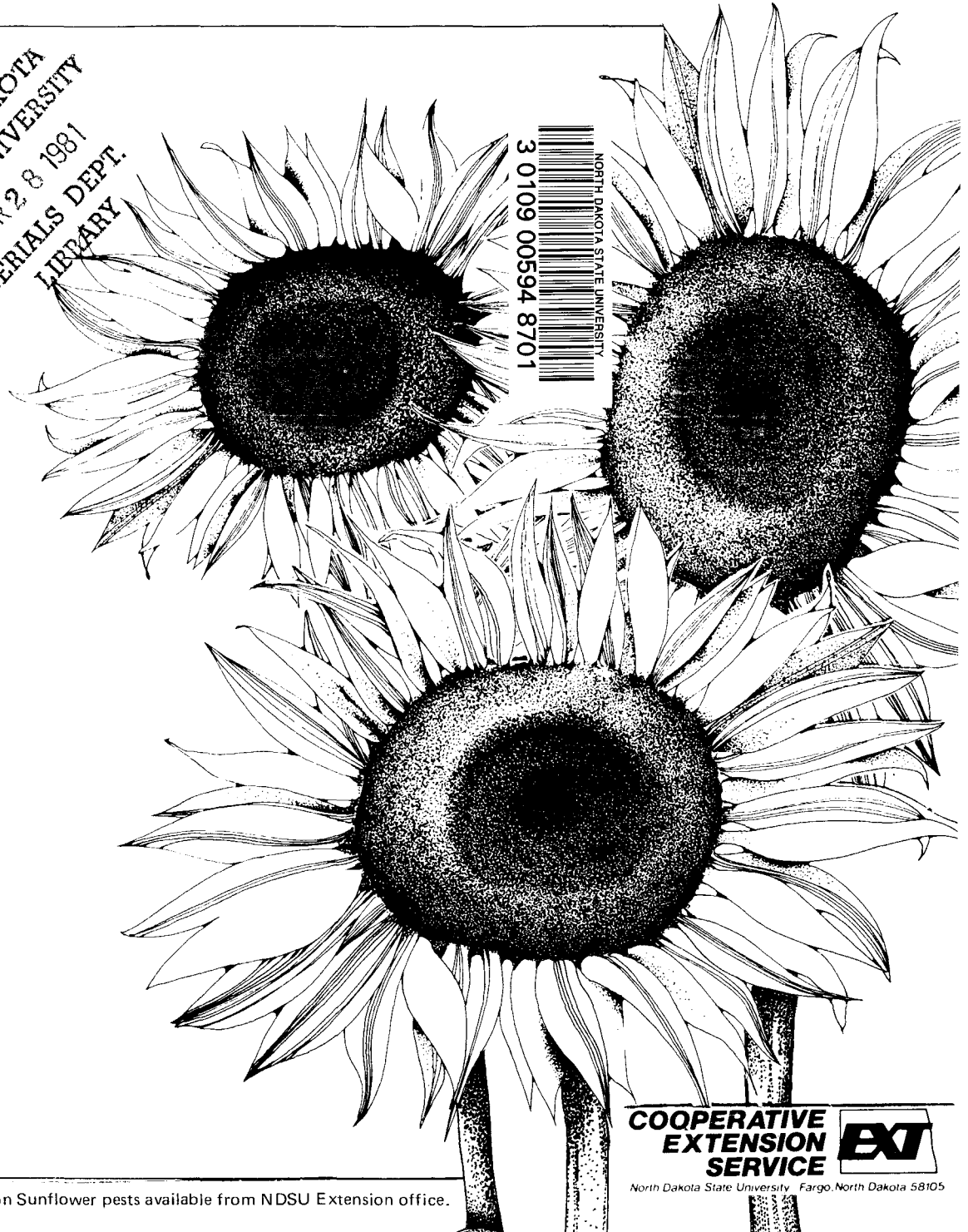
NORTH DAKOTA
STATE UNIVERSITY
APR 28 1981
SERIALS DEPT.
LIBRARY

*Key to the adults of insects
commonly attacking
sunflowers in
North Dakota*

Rick Weinzierl
Graduate Assistant - Entomology

Dennis D. Kopp
Extension Entomologist

Christian Oseto
Assistant Professor - Entomology



14.3
9
8x
E-707

**COOPERATIVE
EXTENSION
SERVICE** **EXT**

North Dakota State University - Fargo, North Dakota 58105

Additional information on Sunflower pests available from NDSU Extension office.

ADULT INSECT A BUTTERFLY OR MOTH

WINGSPAN 1/2" - 3/4"

WINGSPAN 1 1/4" - 1 1/2"

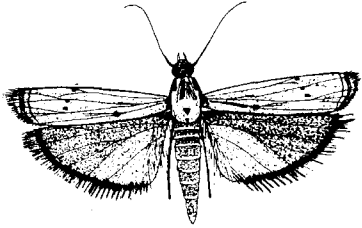
WINGSPAN 2" OR GREATER

NO DARK BANDS ON WINGS,
WINGS BUFF TO GRAYISH

FOREWINGS WITH DARK,
TRANSVERSE BANDS

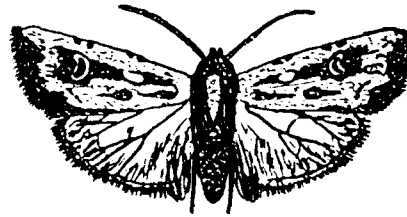
FOREWINGS REDDISH-BROWN
WITH BEAN-SHAPED MARKS

FOREWINGS GRAY,
INDISTINCT MARKS

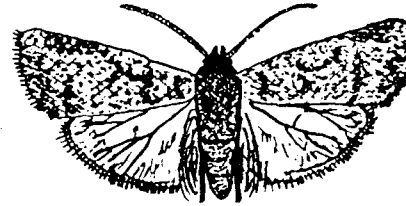


Homoeosoma electellum
(SUNFLOWER MOTH)

ADULTS DEPOSIT EGGS IN FLORETS
OF HEAD, EARLY TO MID JULY.
LARVAE FEED IN FLORETS AND SEEDS.



Euxoa ochrogaster
(RED-BACKED CUTWORM)

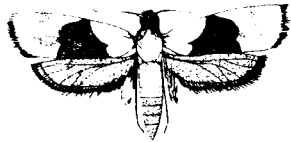


Euxoa messoria
(DARK-SIDED CUTWORM)

MOTHS DEPOSIT EGGS IN SOIL MID TO LATE
SUMMER. LARVAE FEED MAY-JUNE, CUT SEEDLING
NEAR SOIL.

1 BROAD, DARK BAND ACROSS
BUFF TO GRAYISH FOREWINGS

2 NARROW, DARK BANDS ACROSS
GRAY FOREWINGS



Phalonia hospes
(BANDED SUNFLOWER MOTH)

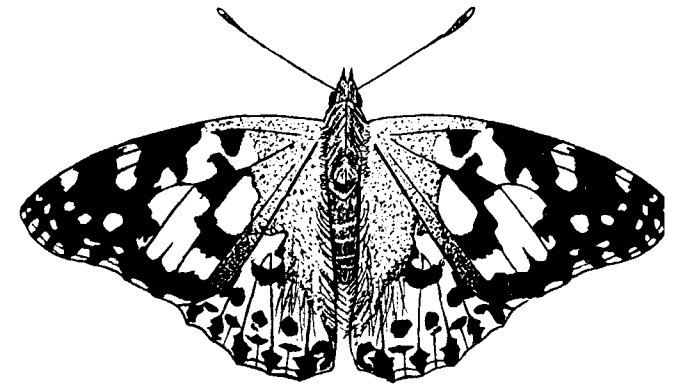
ADULTS PRESENT JULY-AUGUST,
DEPOSIT EGGS ON BRACTS. LARVAE
FEED ON FLORETS AND SEEDS.



Stileima helianthana
(SUNFLOWER BUDWORM)

2 GENERATIONS PER YEAR; ADULTS
PRESENT MAY-JUNE, AGAIN JULY-
AUGUST. DEPOSIT EGGS NEAR BUDS,
BRACTS, OR ON LEAVES. /AE

UPPER WING SURFACE BROWN, WITH
ORANGE, WHITE, AND BLACK MARKINGS.
"EYESPOTS" ON HIND WINGS.

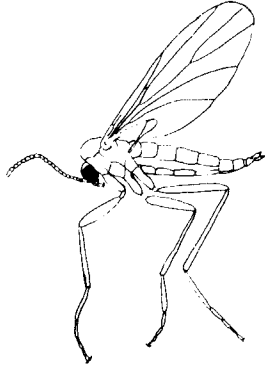


Vanessa cardui (PAINTED LADY)

2 ADULT GENERATIONS PER YEAR, ADULTS
PRESENT LATE MAY-EARLY JUNE, AGAIN LATE
JULY. SPINY LARVAE FEED ON FOLIAGE.

ADULT INSECT FLY-LIKE

WINGS WITHOUT DARK MARKINGS
BODY 1/8" LONG

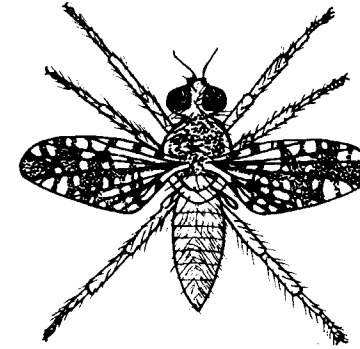


Contarinia schulzi
(SUNFLOWER MIDGE)
ADULTS DEPOSIT EGGS IN DEVELOPING BUDS IN JULY. LARVAE FEED ON MARGINS OF HEADS AND ON DEVELOPING SEEDS. LARVAE MAY CAUSE DISTORTION IN SHAPE OF HEAD.

WINGS WITH DEFINITE DARK PATTERN
BODY 3/16" - 5/16" LONG
(ADULTS OF MAGGOT COMPLEX)

EYES DARK

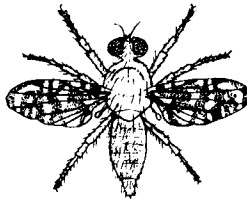
EYES BRIGHT GREEN



Gymnocarena diffusa
ADULTS PRESENT LATE JUNE-EARLY SEPT.; EGGS DEPOSITED BETWEEN BRACTS OF SUNFLOWER HEAD. LARVAE TUNNEL IN RECEPTACLE.

WING MARKINGS FORM NET-LIKE APPEARANCE

BROAD, DARK BANDS ON FOREWINGS FORM F-SHAPED MARK NEAR TIP



Neotephritis finalis
2 GENERATIONS PER YEAR; ADULTS PRESENT IN JULY, AGAIN MID TO LATE AUGUST; DEPOSIT EGGS ON UPOPENED INFLORESCENCE. LARVAE FEED IN FLORETS AND SEED;



Strauzia longipennis
ADULTS PRESENT EARLY JUNE TO MID JULY FOUND EARLY ON FIELD EDGE VEGETATION; DEPOSIT EGGS ON STEM. LARVAE TUNNEL IN STEM.

ADULT INSECT WITH ABDOMEN COVERED BY SHELL-LIKE FOREWINGS - BEETLES AND WEEVILS

DORSAL SURFACE (FOREWINGS)
WITH STRIPES OR SPOTS;
WITH OR WITHOUT LONG SNOOT

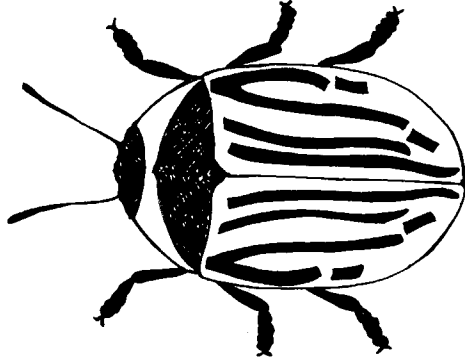
DORSAL SURFACE (FOREWINGS) SOLID
COLOR WITH LONG SNOOT

FOREWINGS STRIPED; HEAD REDDISH-
BROWN; BODY 3/8" LONG; WITHOUT
SNOOT.

FOREWINGS GRAY WITH WHITE
SPOTS; BODY 3/16" LONG;
SNOOT DIRECTED DOWNWARD

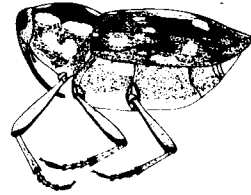
FOREWINGS DARK BROWN
TO BLACK.

FOREWINGS GRAY OR
REDDISH-BROWN.



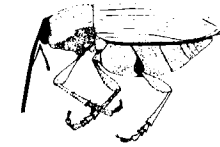
Zygogramma exclamationis
(SUNFLOWER BEETLE)

ADULTS FOUND THROUGHOUT JUNE;
DEPOSIT EGGS ON STEMS AND LEAVES;
LARVAE FEED ON STEMS AND LEAVES.



Cylindrocopturus adspersus
(STEM WEEVIL)

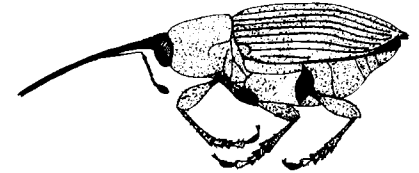
ADULTS FOUND JUNE-AUGUST; FEED
ON STEMS AND LEAVES; DEPOSIT EGGS
IN STEM; LARVAE FEED WITHIN STEM.



FOREWINGS REDDISH-BROWN
BODY 1/8" LONG.

Smicronyx fulvus
(SEED WEEVIL)

ADULTS FOUND LATE JUNE THROUGH JULY; FEED ON
BUDS BETWEEN BRACTS; DEPOSIT EGGS IN DEVELOPING SEEDS;
LARVAE FEED WITHIN SEEDS.



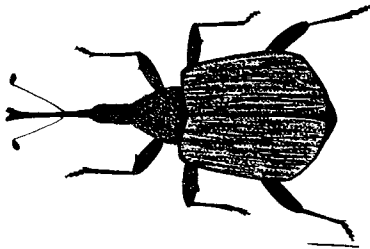
FOREWINGS GRAY (NO
WHITE SPOTS); BODY
1/4" LONG.

Smicronyx sordidus
(SEED WEEVIL)

BODY WIDE, SQUARED, 1/4" LONG

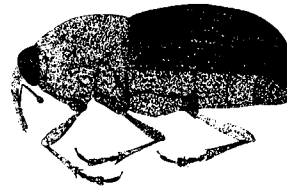
BODY OVAL, NARROW, 1/4" LONG

BODY SLIGHT, FRAGILE, 1/8" LONG;
DORSAL SURFACE HUMPED



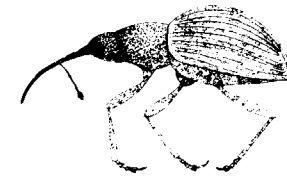
Haplorhynchites aeneus
(HEAD-CLIPPER WEEVIL)

ADULTS EMERGE EARLY JULY; FEED ON STEM BELOW
DEVELOPING HEAD, CAUSE BREAKAGE; DEPOSIT EGGS
IN HEAD; LARVAE FEED IN FALLEN HEADS.



Baris strenua
(STEM WEEVIL)

ADULTS FOUND MID-JUNE THROUGH MID-AUGUST; DEPOSIT
EGGS IN STEMS; LARVAE FEED WITHIN STEM.



Apion occidentale
(STEM WEEVIL)

2 ADULT GENERATIONS PER YEAR;
PRESENT MAY THROUGH SEPTEMBER;
DEPOSIT EGGS IN STEM; LARVAE
FEED IN STEM.