

# WATER RESOURCE EXPERIMENT STATION

## MIDTERM REVIEWS



ASHLYNN ZEIEN  
MARK BARNHOUSE  
ARCH 771, FALL 2011



INSPIRATION:

# DANDELIONS

Qualities

Form

Concept

Structure

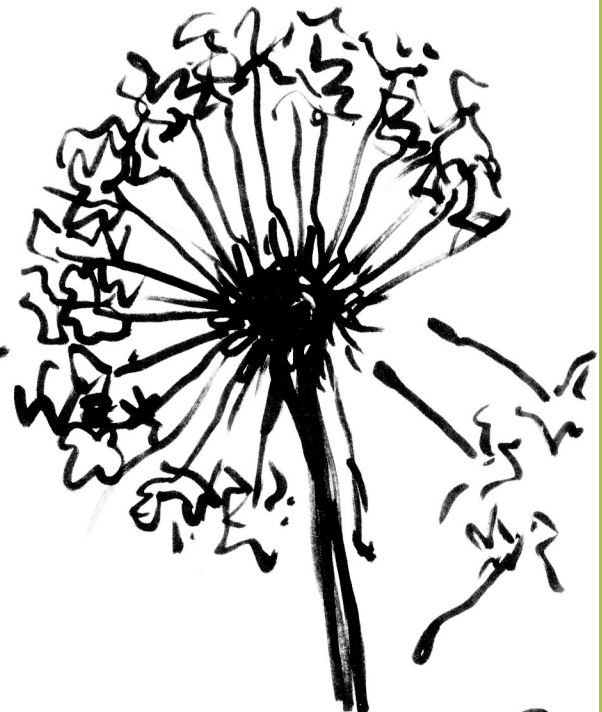
↳ Geodesic

↳ Johnson

Fluidity

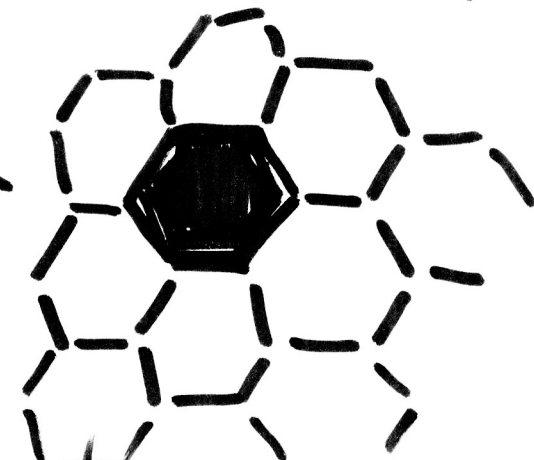
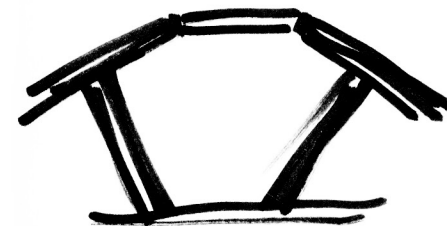
Seasonal

Movement

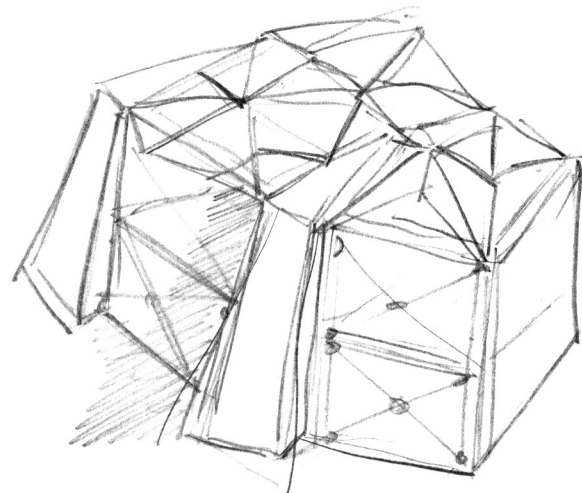
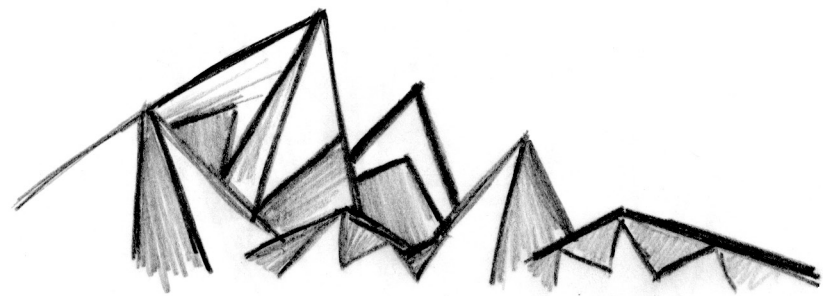


Super Structure: 1 or 2 way?

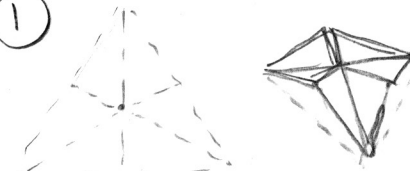
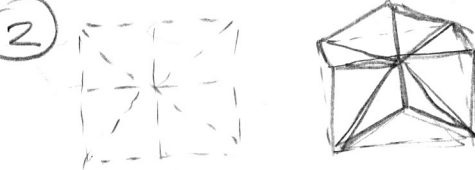
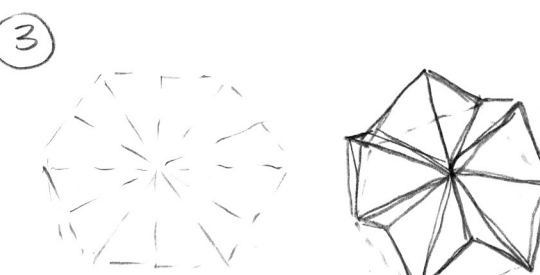
Biophic

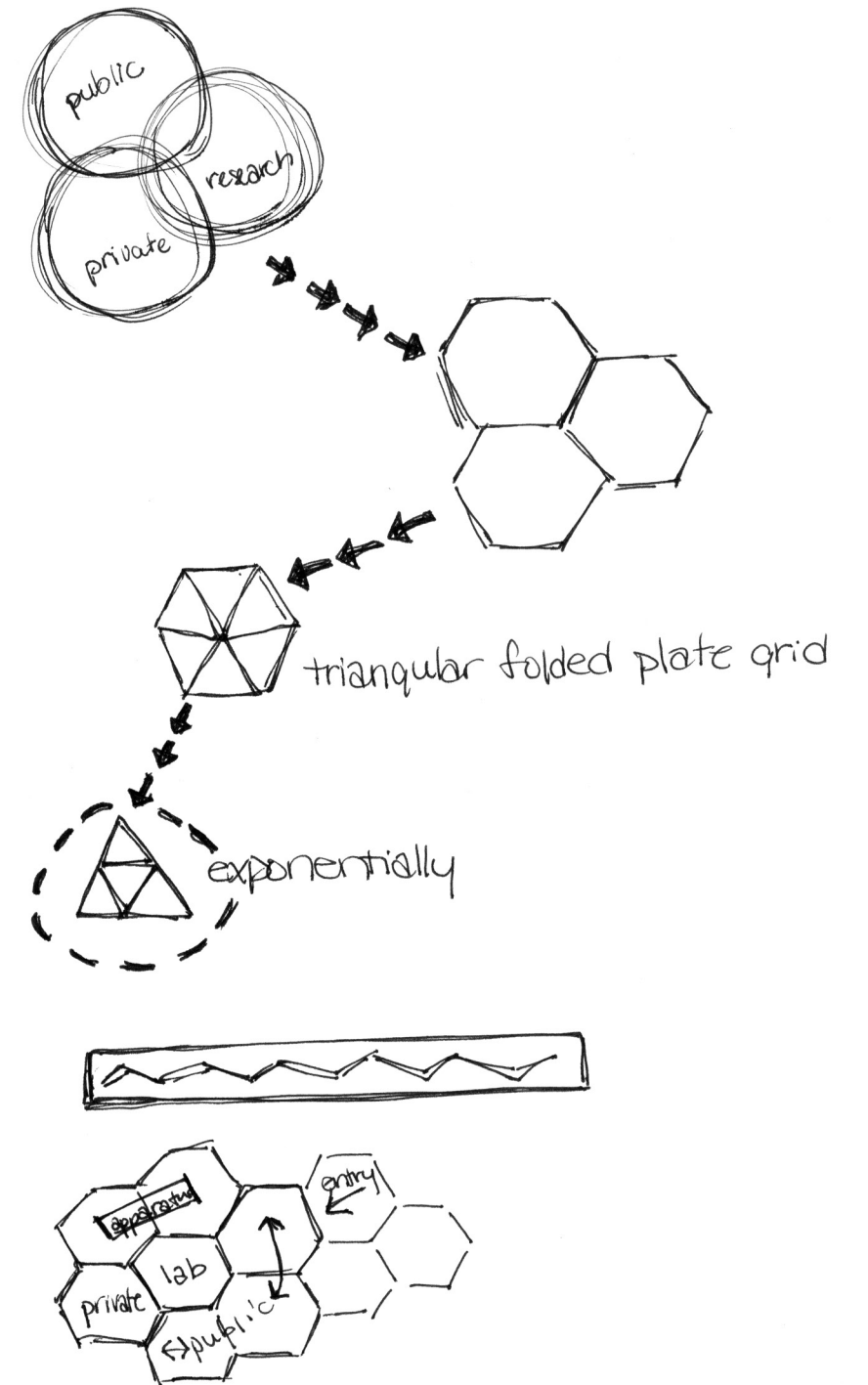


Dandelions

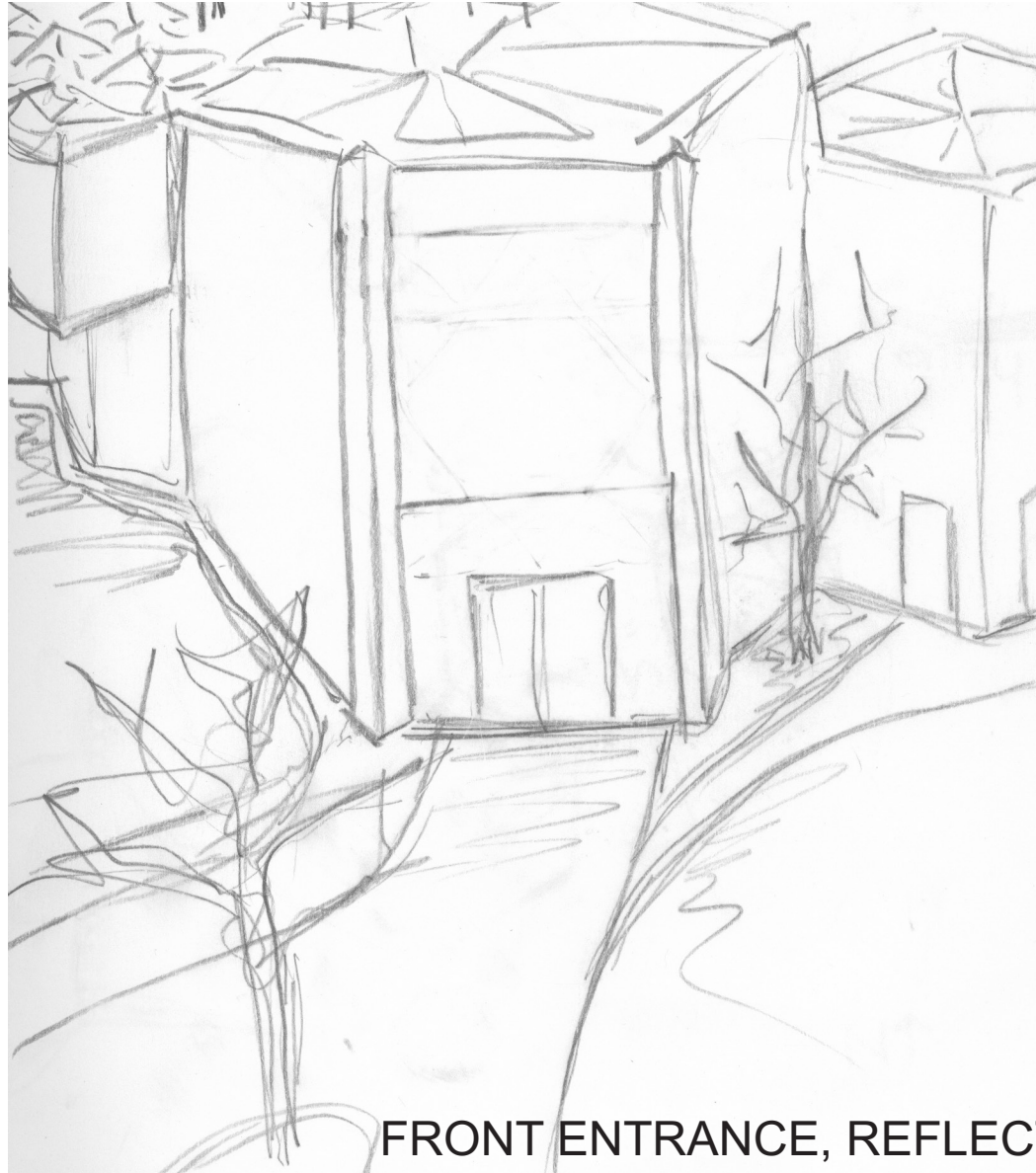


Folded Plate two-way system

- ①  triangular
- ②  square
- ③  hexagonal



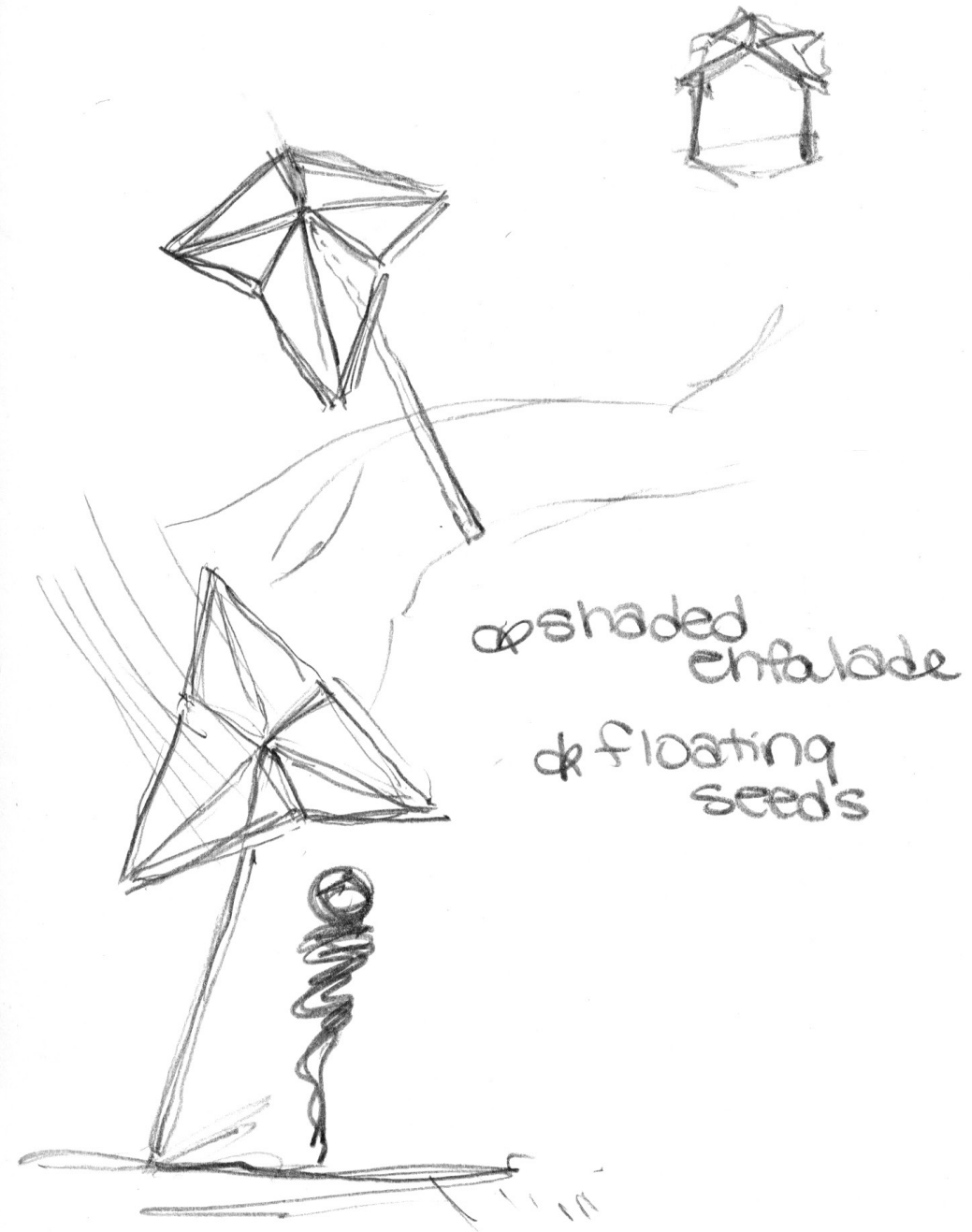
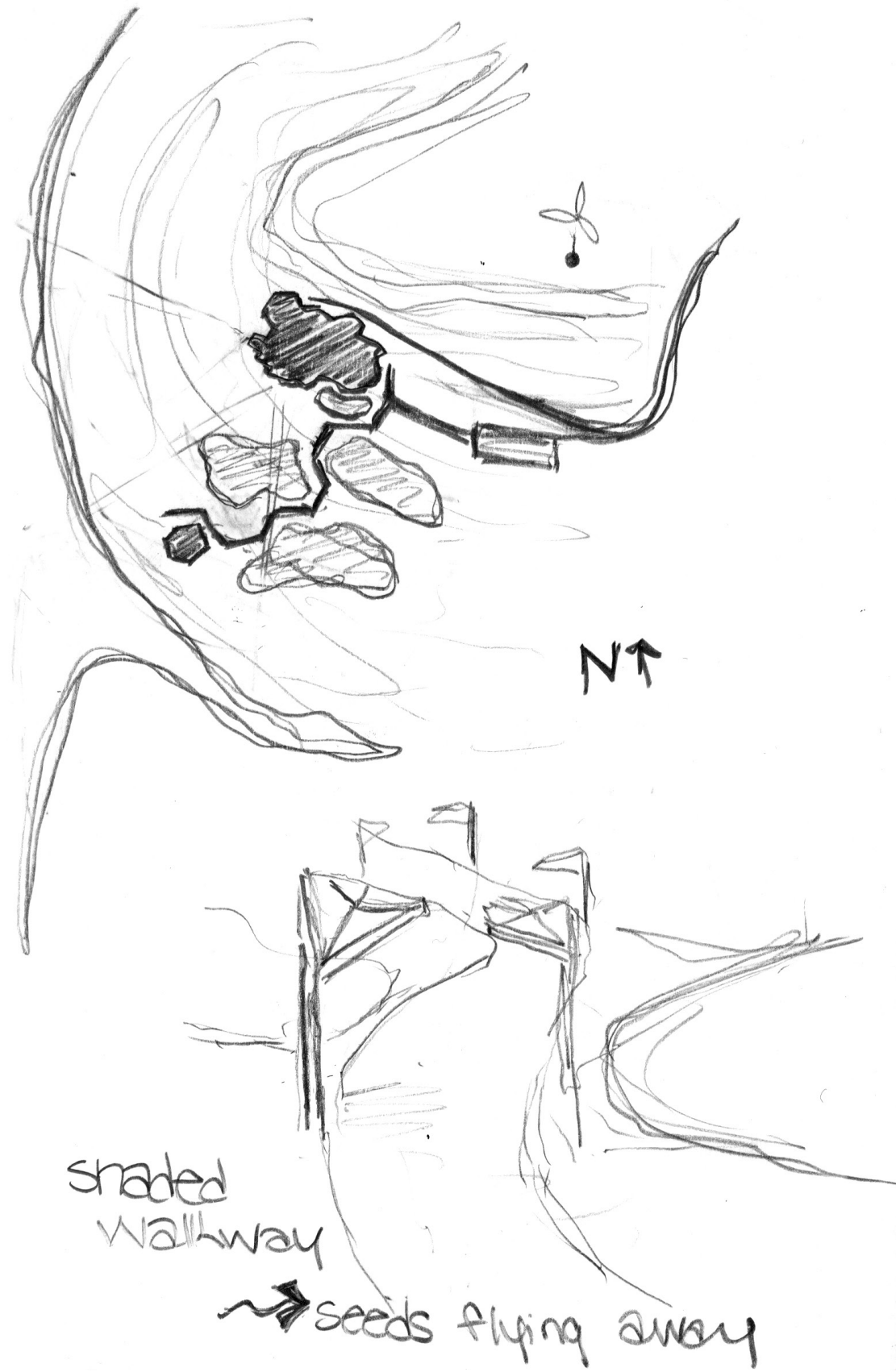
# STRUCTURE SKETCHES



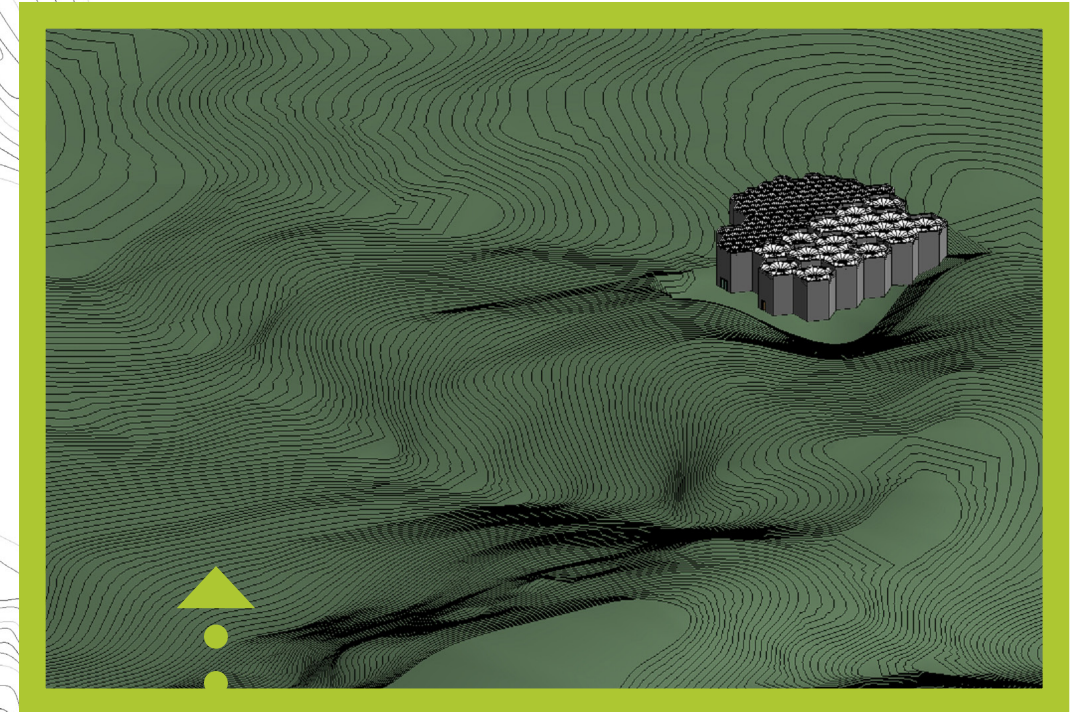
FRONT ENTRANCE, REFLECTION  
POND TO THE SIDE



ENTRY SKETCHES

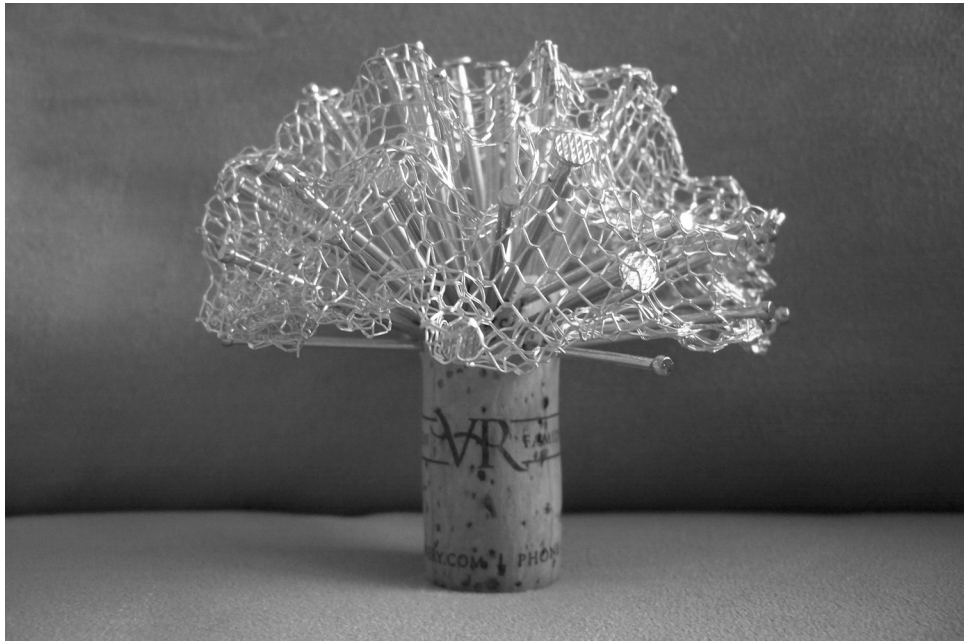


SITE SKETCHES



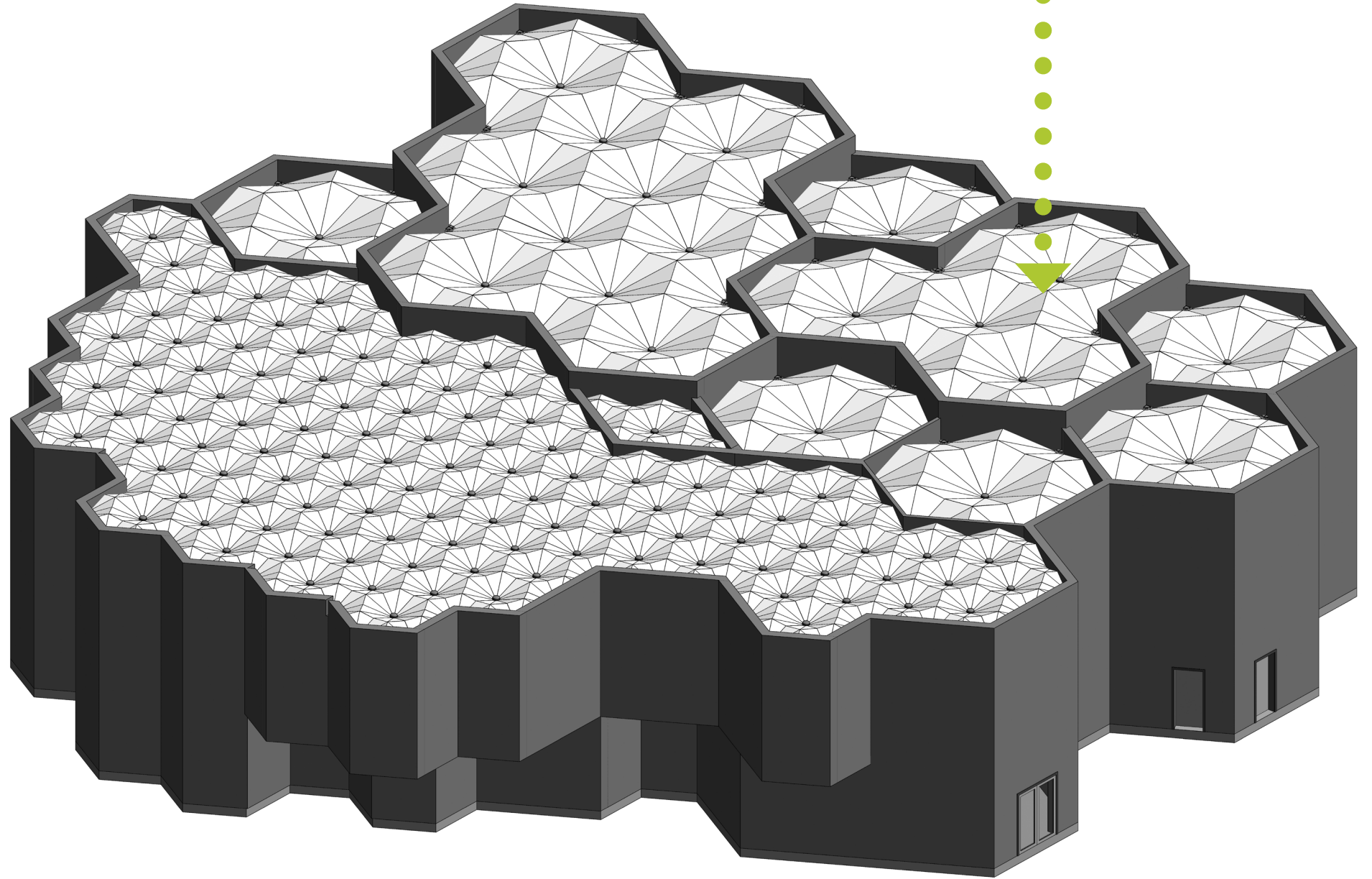
VIEW FROM THE BLUFF LOOKING  
DOWN TOWARD THE RIVER

*SITE PLAN* →



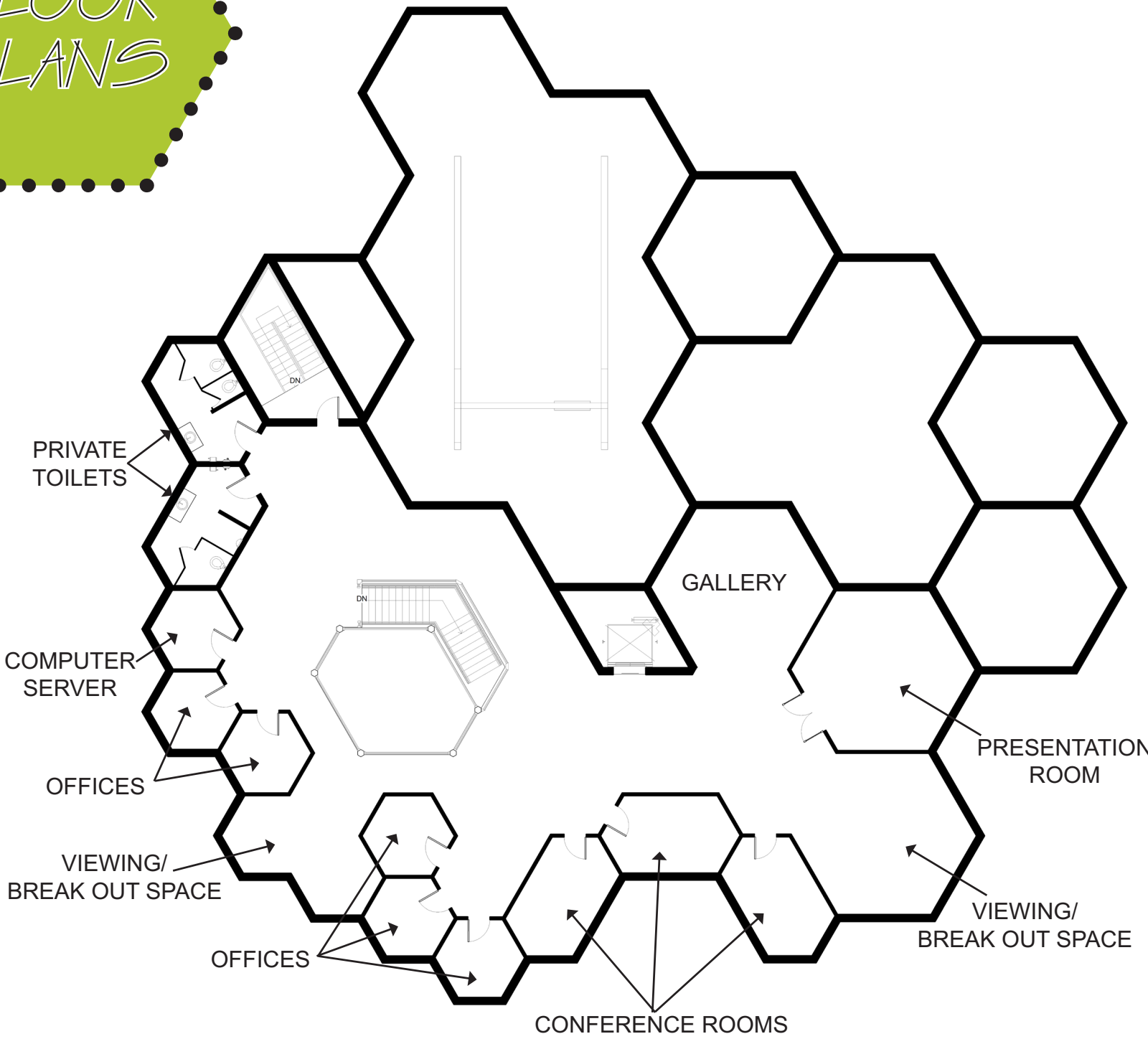
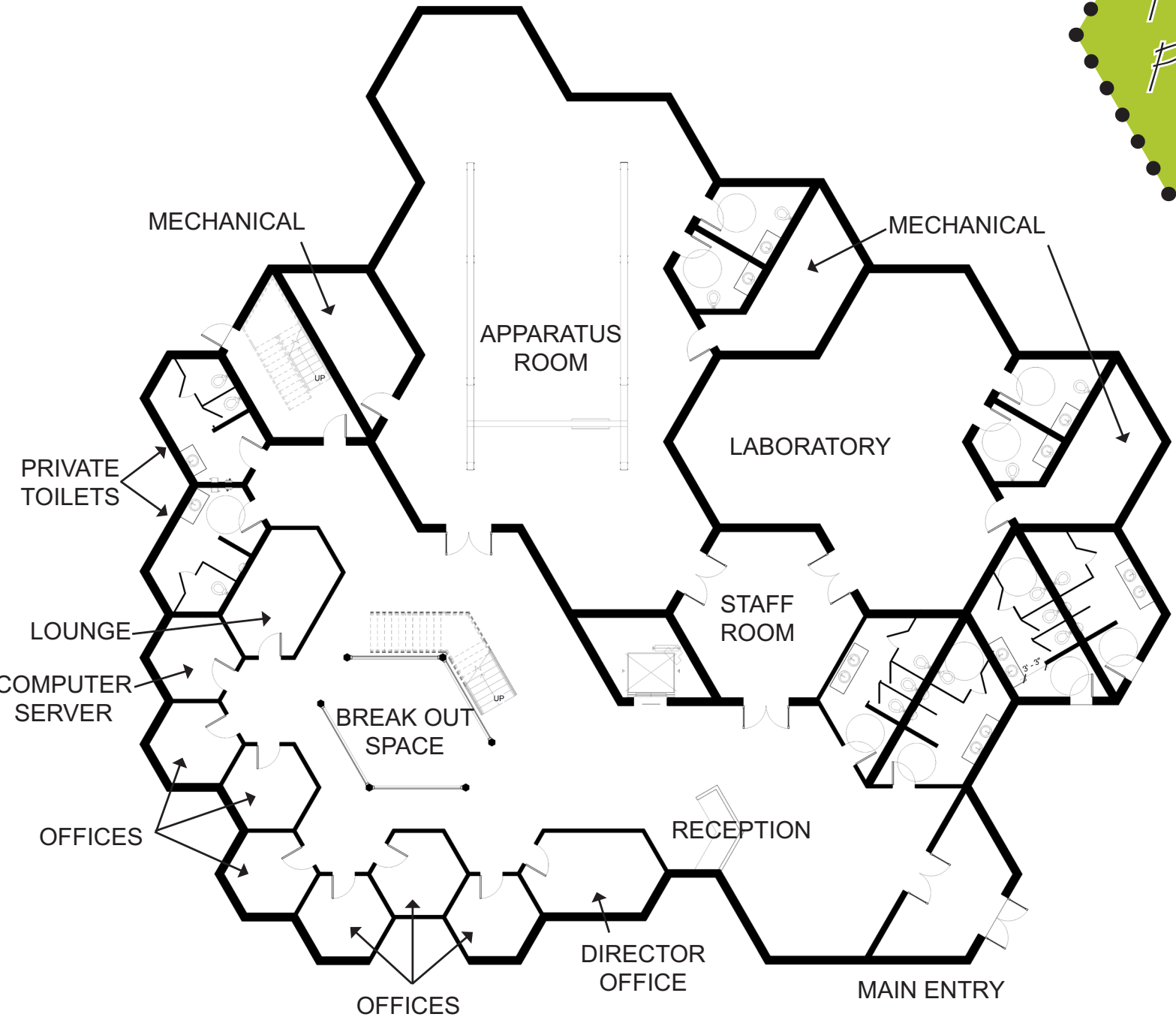
FROM PART I

TO STRUCTURAL FORM



*BIRD'S EYE VIEW*

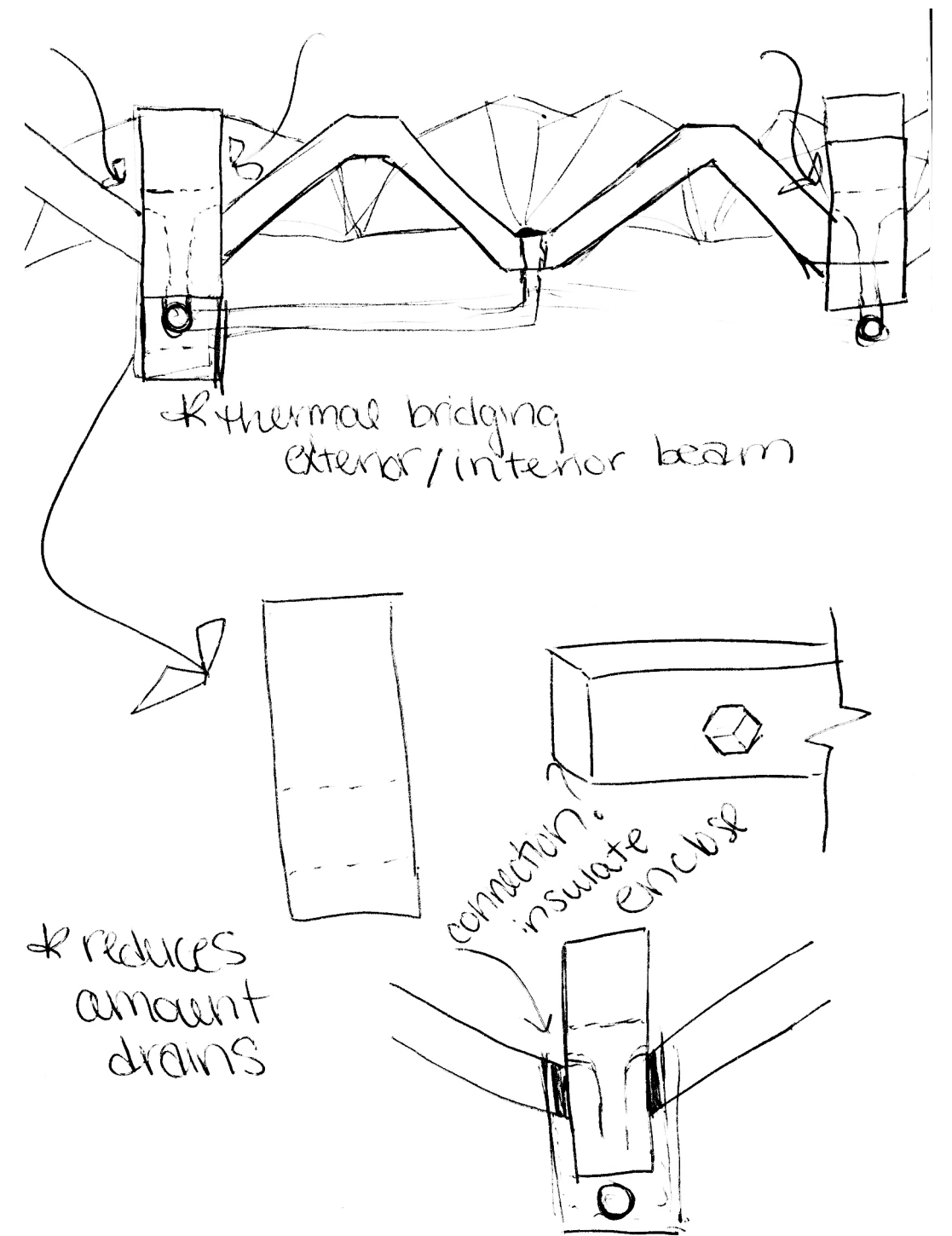
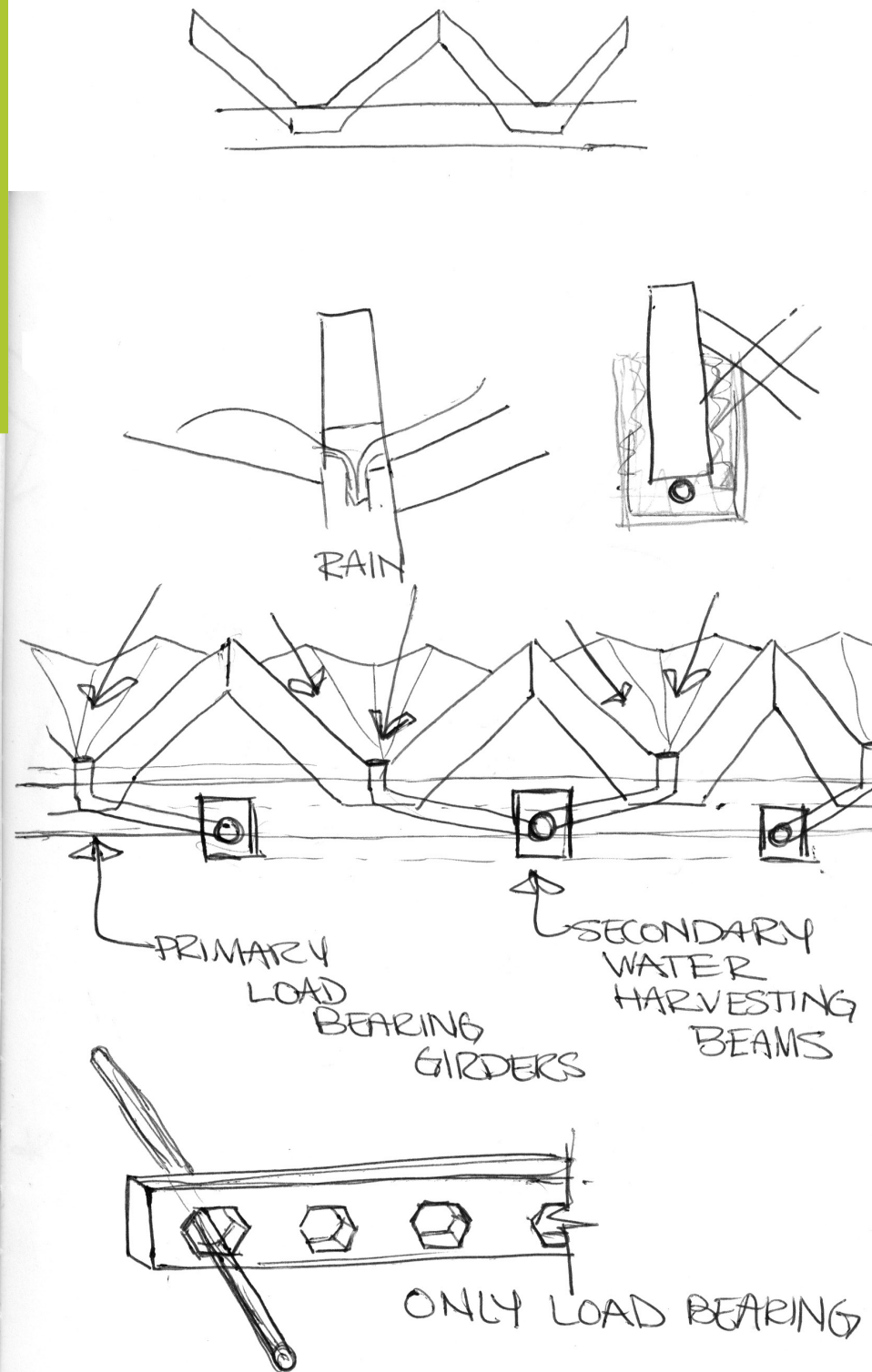
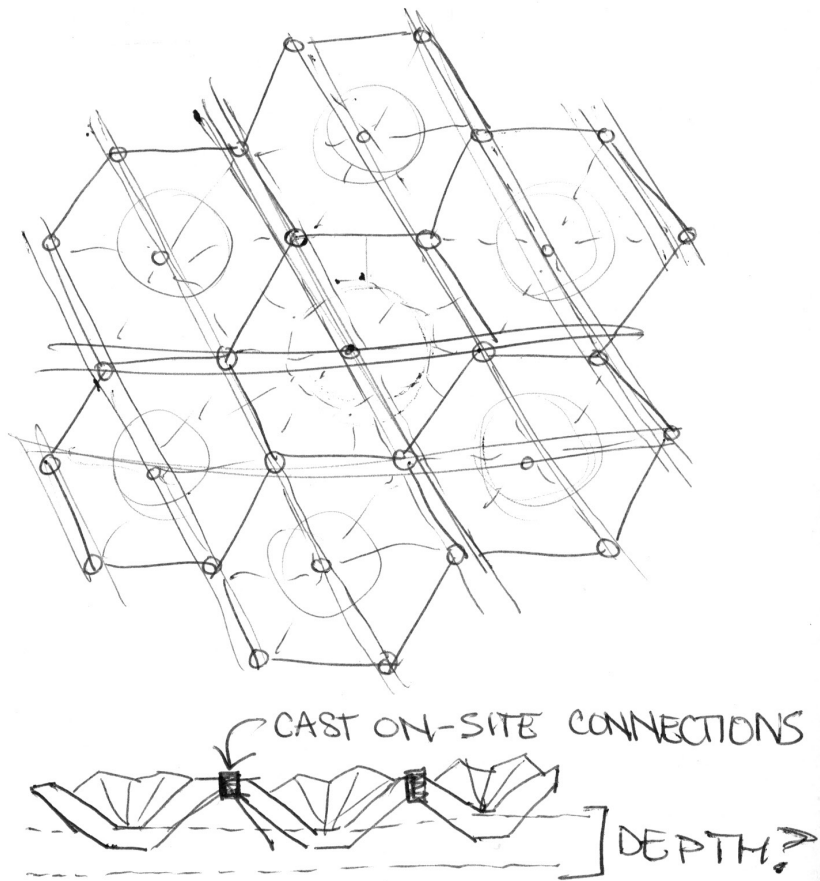
FLOOR PLANS



LEVEL ONE

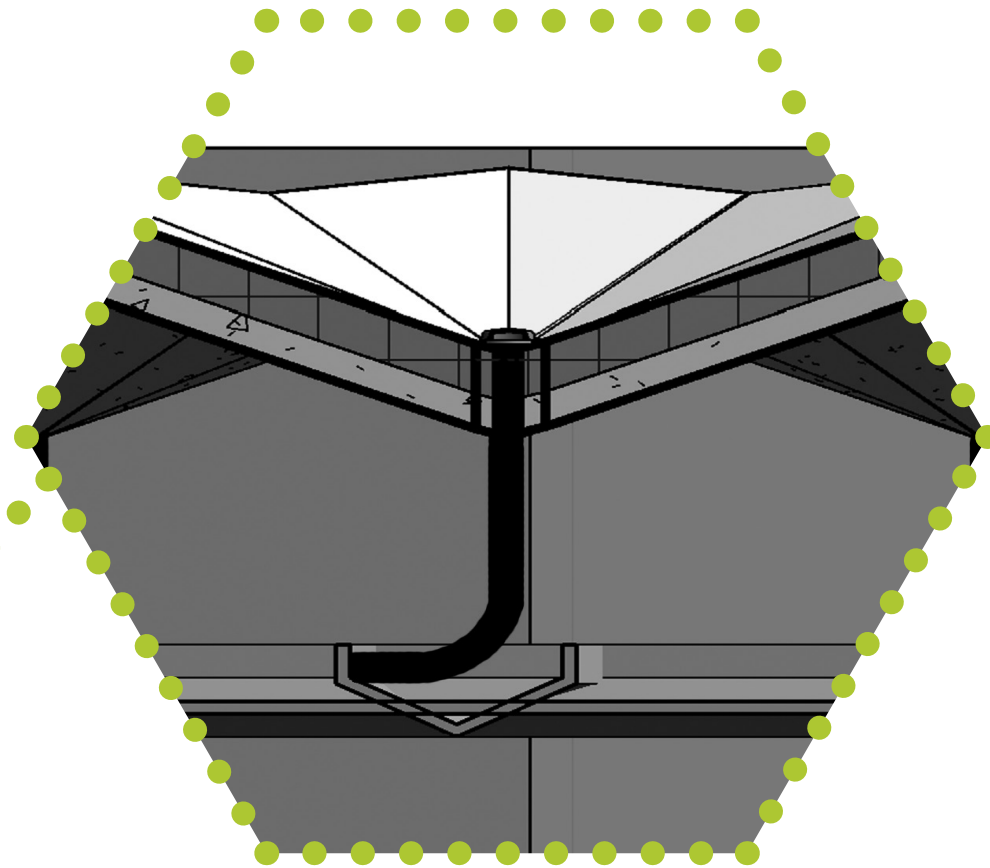
LEVEL TWO





# ROOF STRUCTURE

EVERY LOW POINT  
CREATED BY THE  
FOLDED PLATE  
SYSTEM HAS A  
ROOF DRAIN.  
THE DRAIN PIPES  
FOLLOW A SUSPENDED  
PANEL GRID THAT  
MIRRORS THE PATTERN  
ON THE PLATE ABOVE.



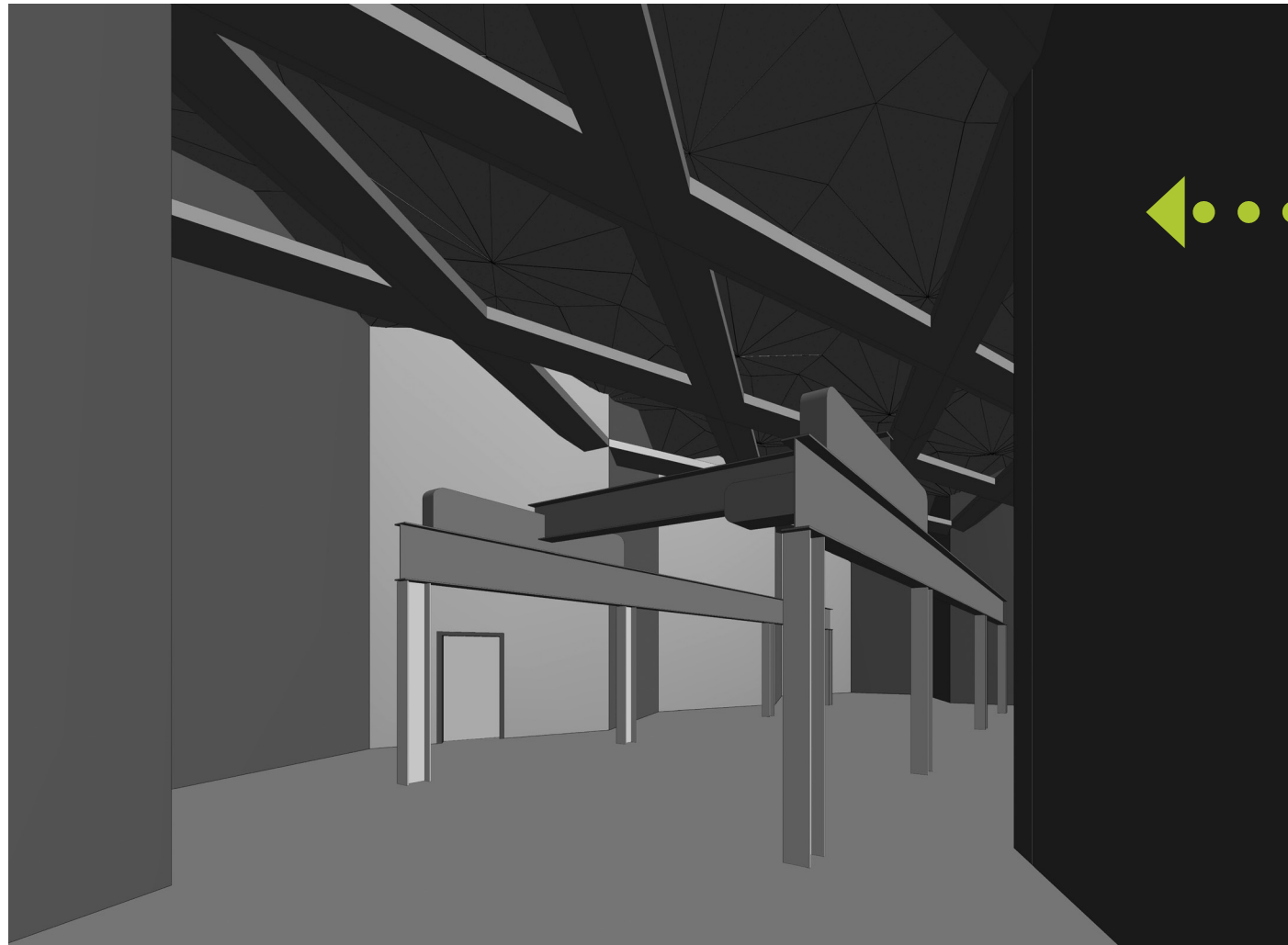
**FOLDED PLATES:**

METAL EXTERIOR FINISH  
8 INCHES OF INSULATION  
6 INCHES OR CONCRETE

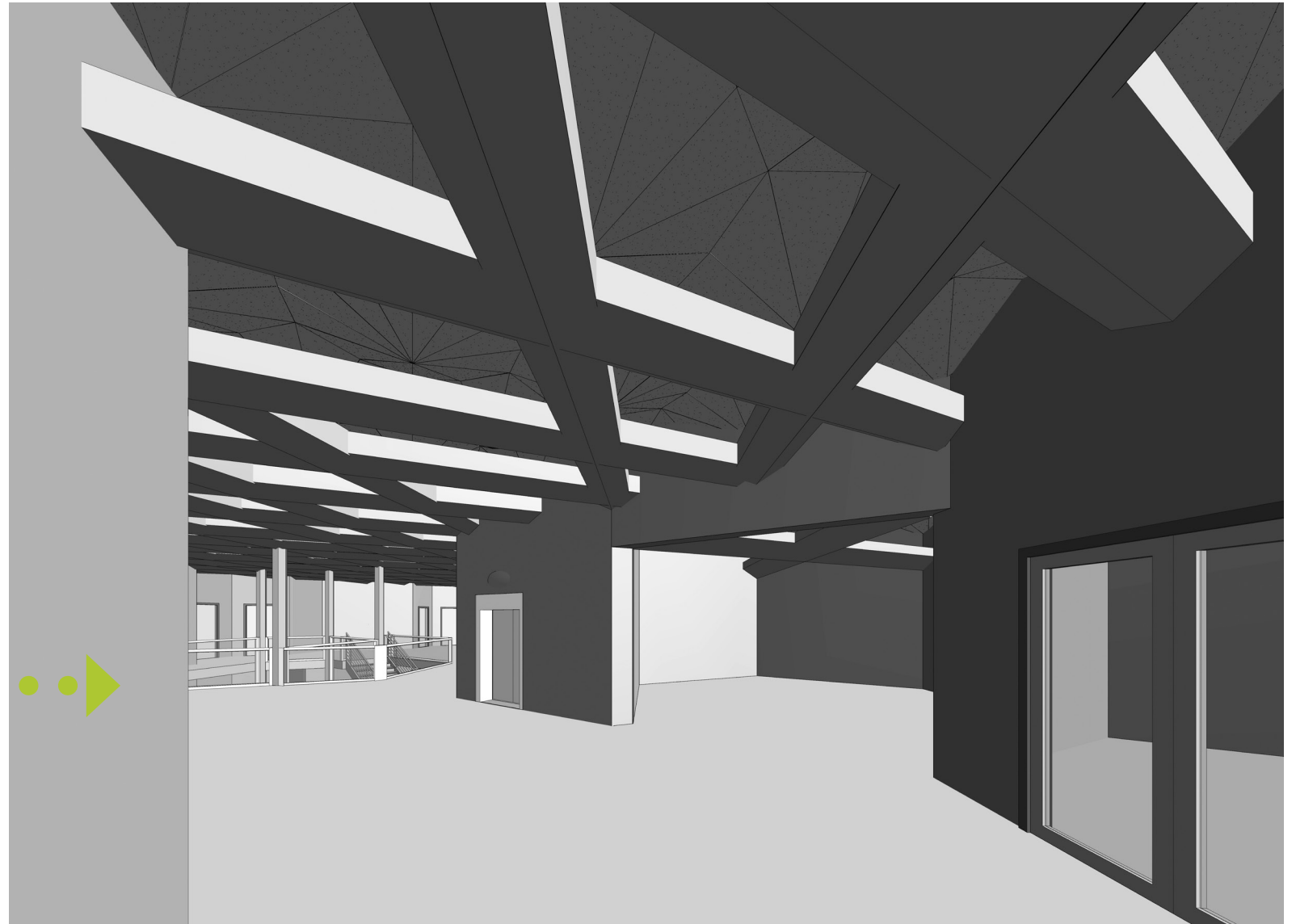
**ROOF DRAINS:**

HARVEST RAIN WATER  
COLLECT AND DISPERSE  
FILTERED INTO PONDS

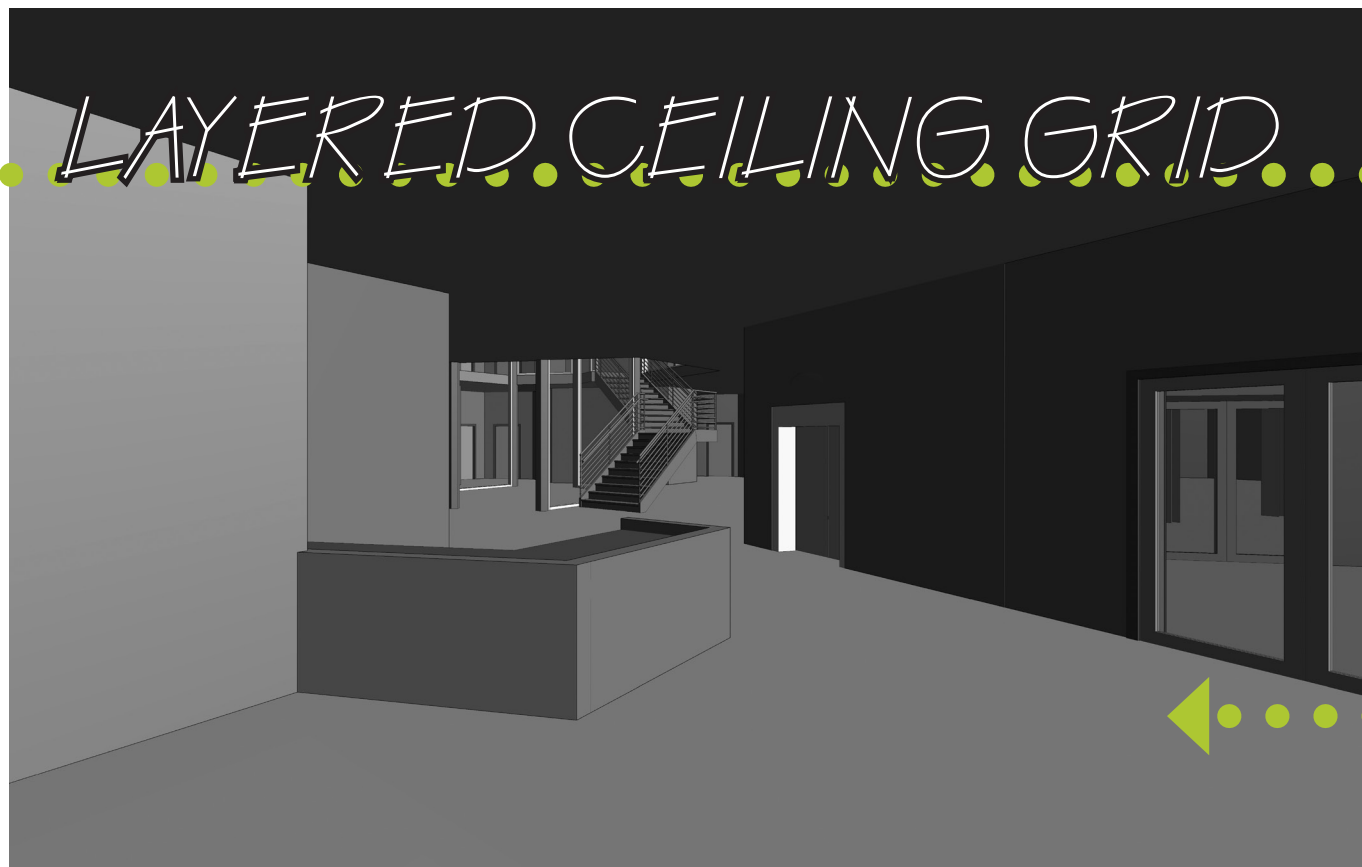




APPARATUS ROOM



RECEPTION/ FRONT ENTRY



LAYERED CEILING GRID