

# WATER RESOURCE EXPERIMENTATION STATION

ELIZABETH MEDD

ARCH 771

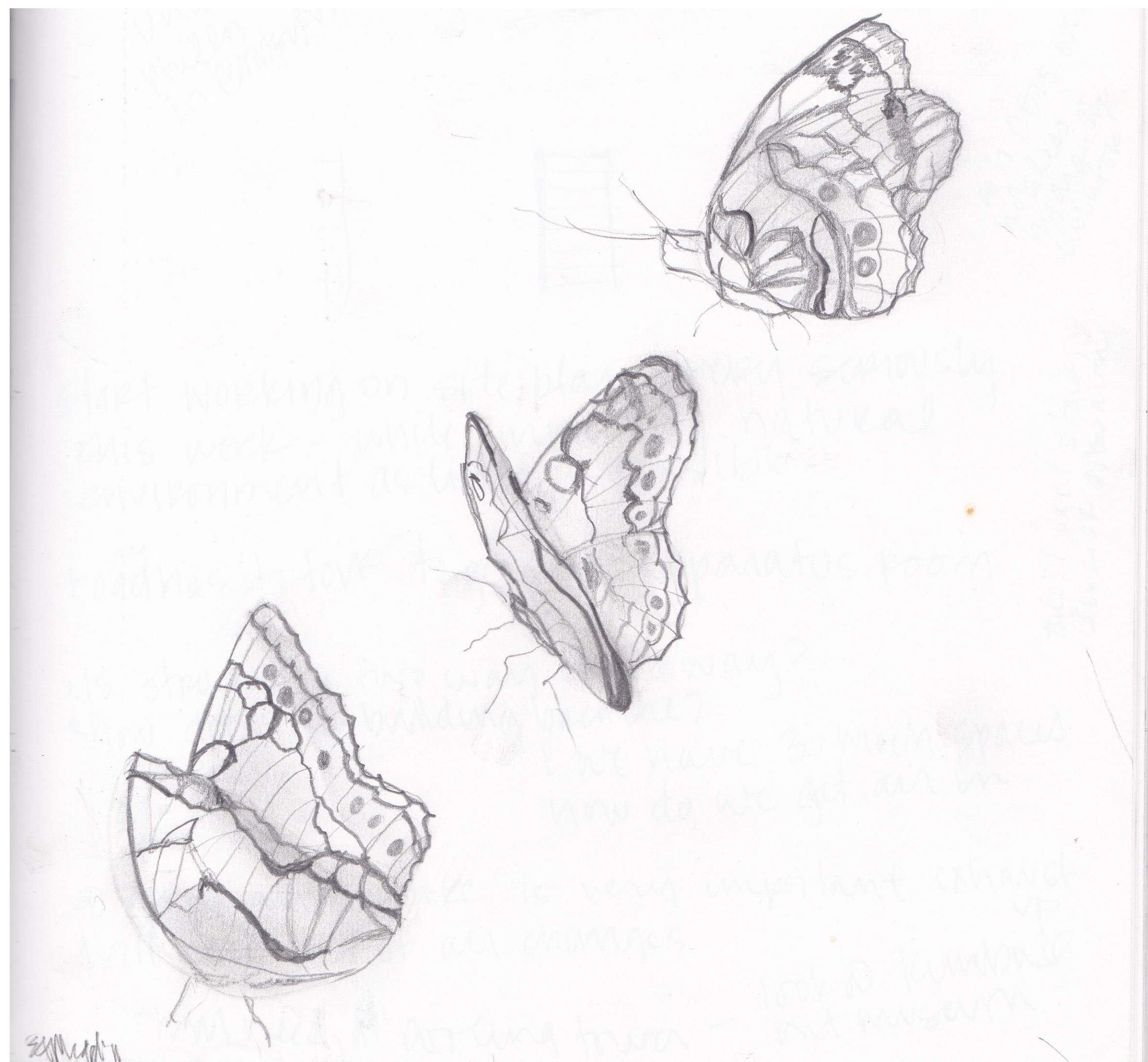
PROFESSOR MARK BARNHOUSE

WATER RESOURCE EXPERIMENTATION STATION

PROGRAMS: REVIT 2012, 3DS MAX 2012,

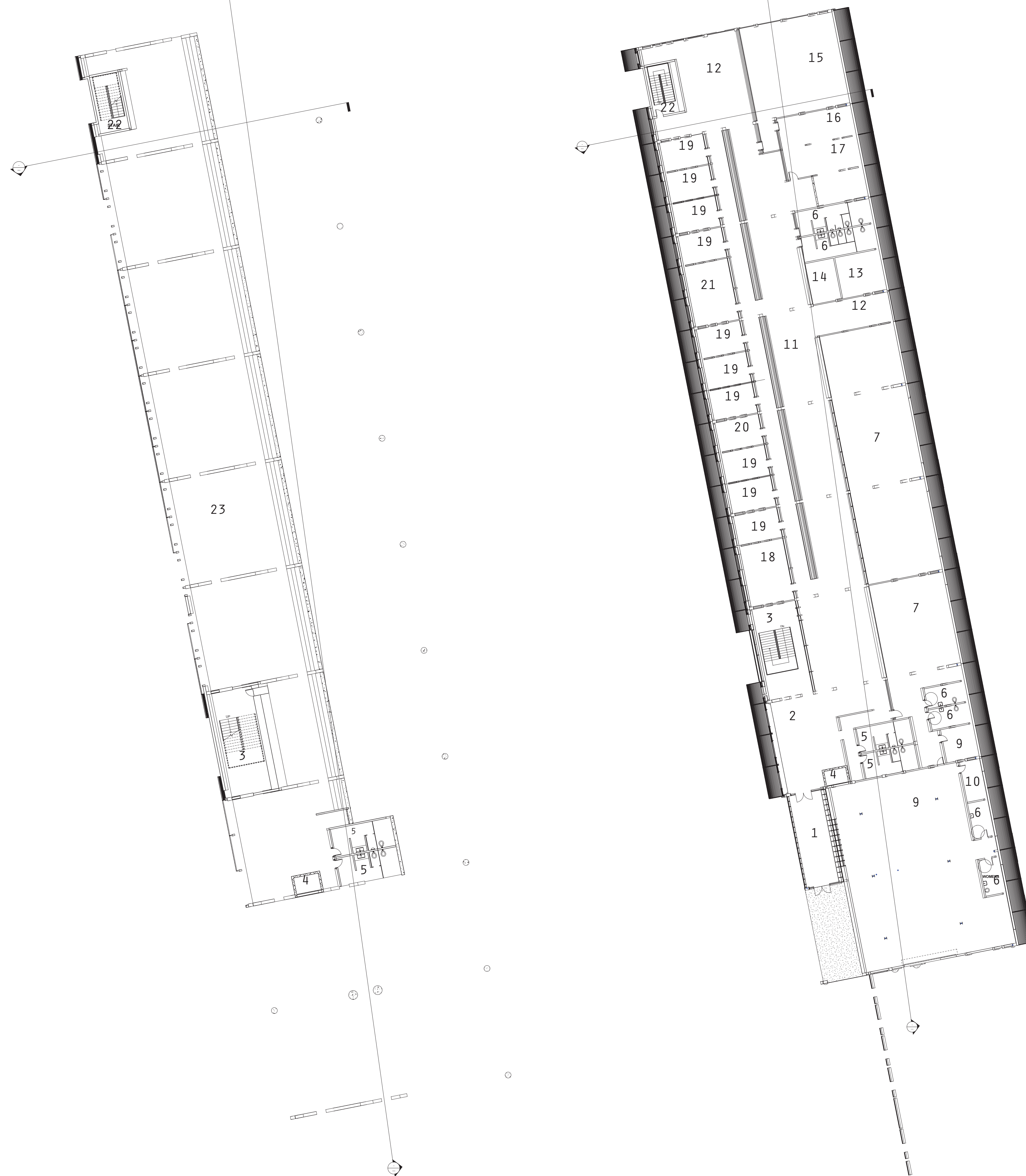
PHOTOSHOP, ADOBE INDESIGN





WATER RESOURCE EXPERIMENTATION STATION

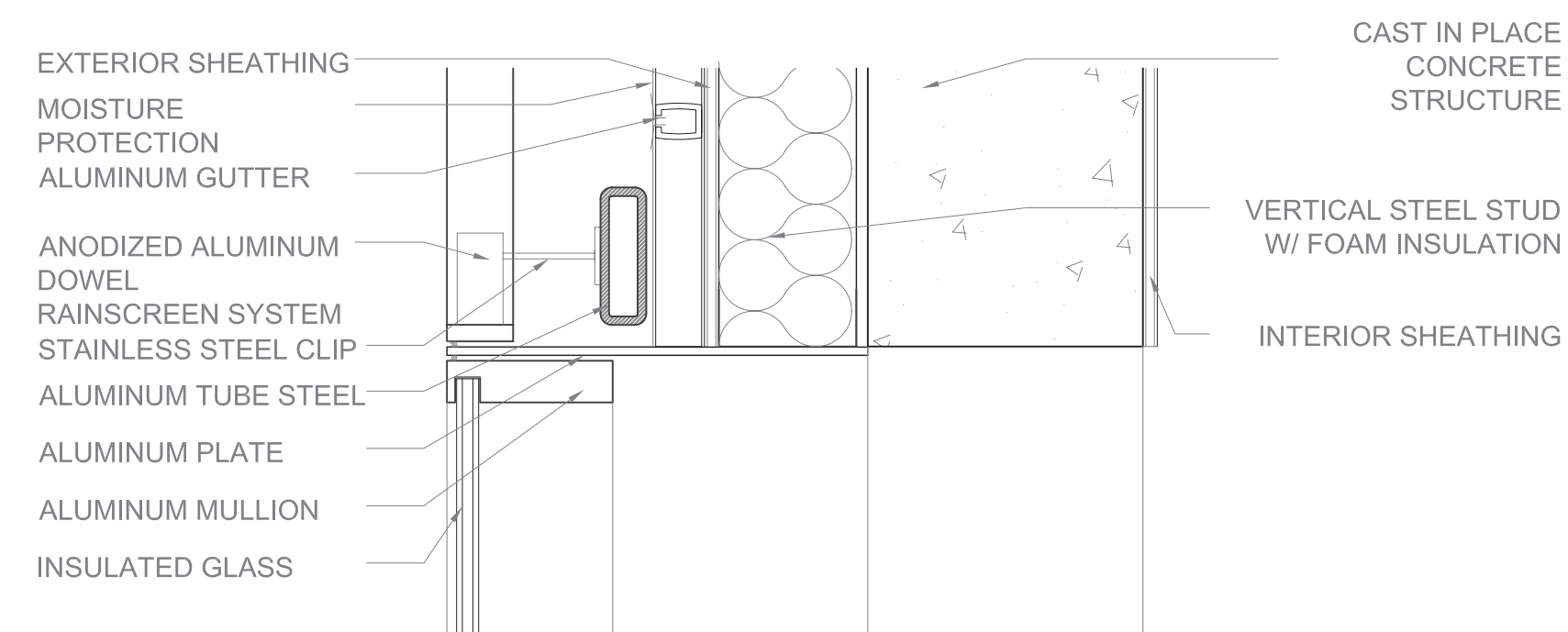




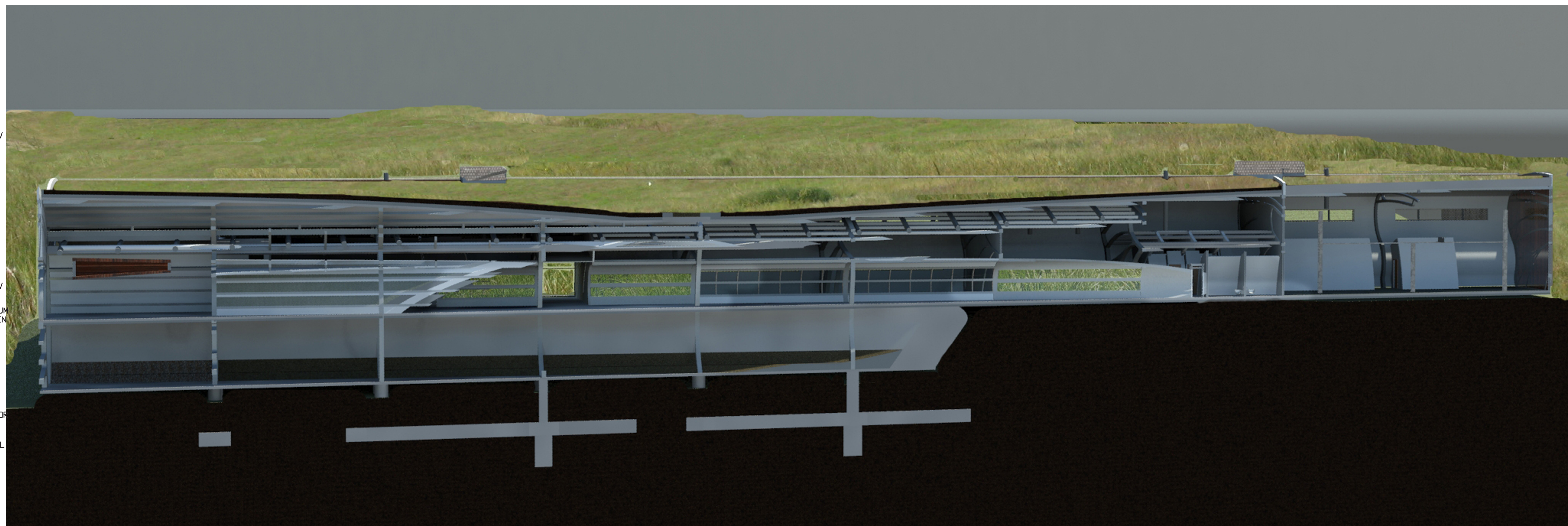
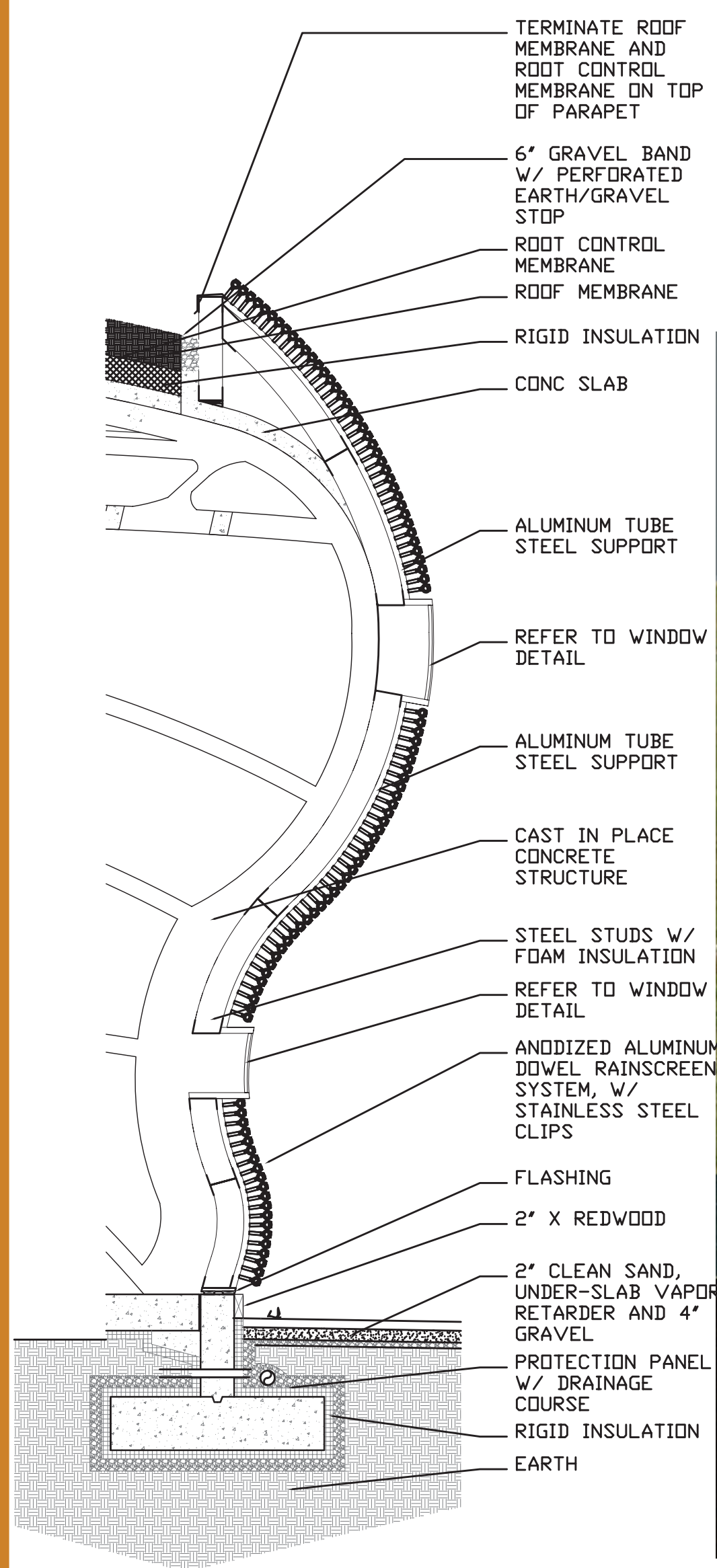
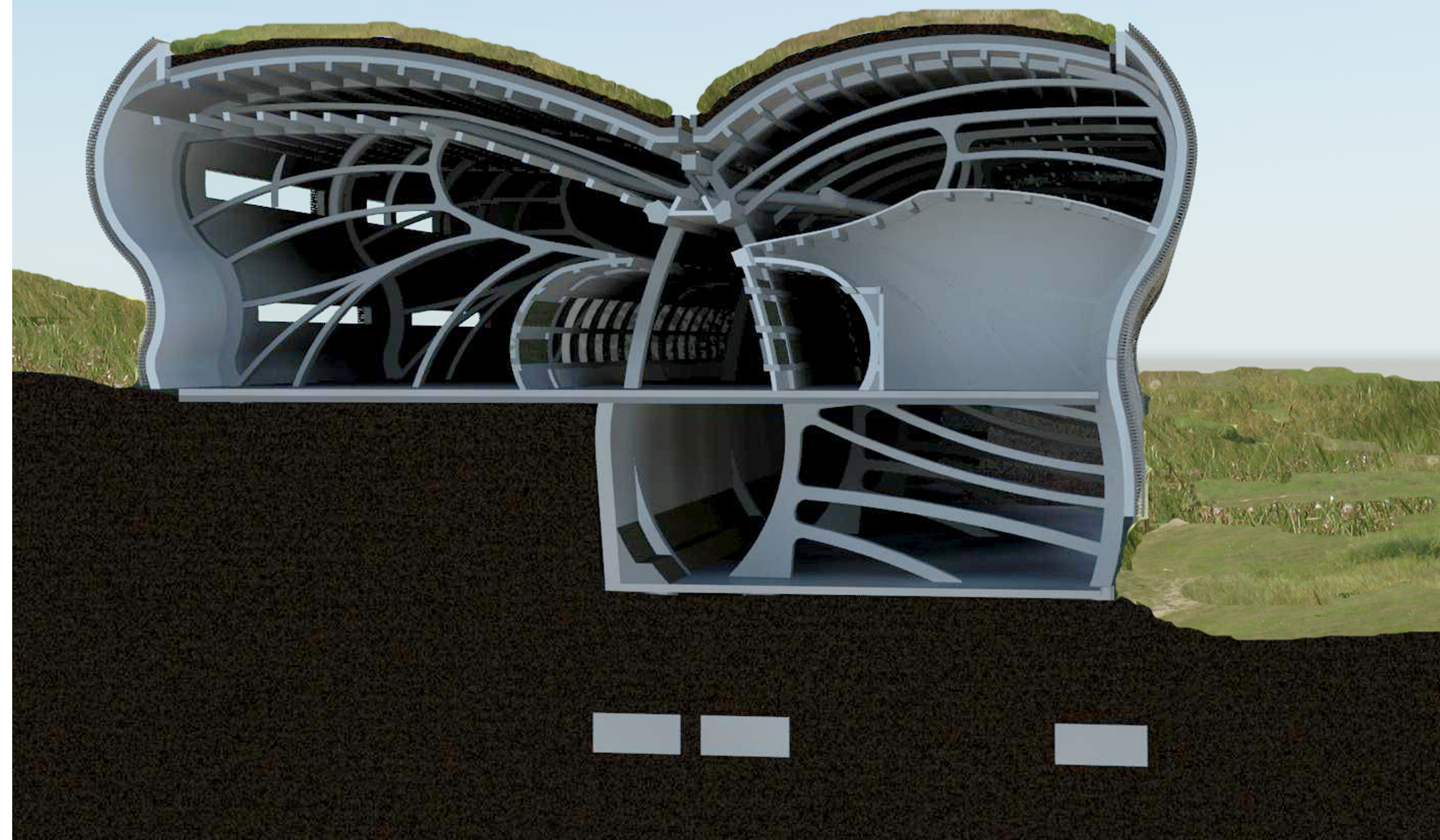
- 1 ENTRY VESTIBULE
- 2 RECEPTION
- 3 MONUMENTAL STAIR
- 4 ELEVATOR
- 5 PUBLIC TOILET ROOMS
- 6 PRIVATE TIOLET ROOMS
- 7 LABORATORY
- 8 LABORATORY MECHANICAL ROOM
- 9 APPARATUS ROOM
- 10 APPARATUS MACHANICAL ROOM
- 11 CIRCULATION
- 12 SPONTANEOUS GATHERING
- 13 MECHANICAL ROOM
- 14 COMPUTER SERVER ROOM
- 15 PRESENTATION ROOM
- 16 EMPLOYEE LOUNGE/LUNCHROOM
- 17 STORAGE/MAIL/WORKROOM
- 18 DIRECTOR'S OFFICE
- 19 PRIVATE OFFICE
- 20 SMALL CONFERENCE ROOM
- 21 LARGE CONFERENCE ROOM
- 22 EGRESS STAIR
- 23 OUTDOOR SPACE/SITESCAPE

# WATER RESOURCE EXPERIMENTATION STATION



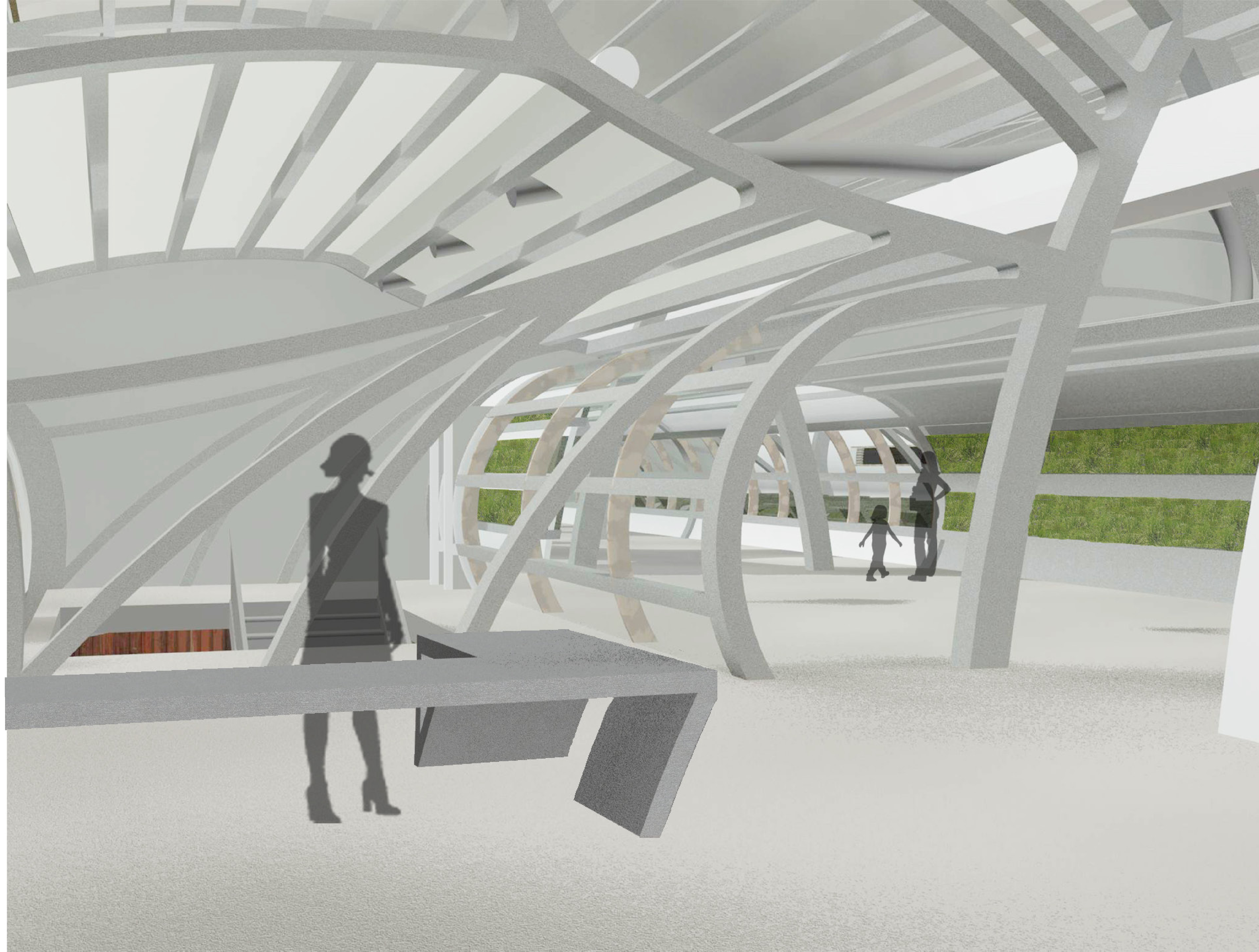


WINDOW AT RAINSCREEN PLAN DETAIL



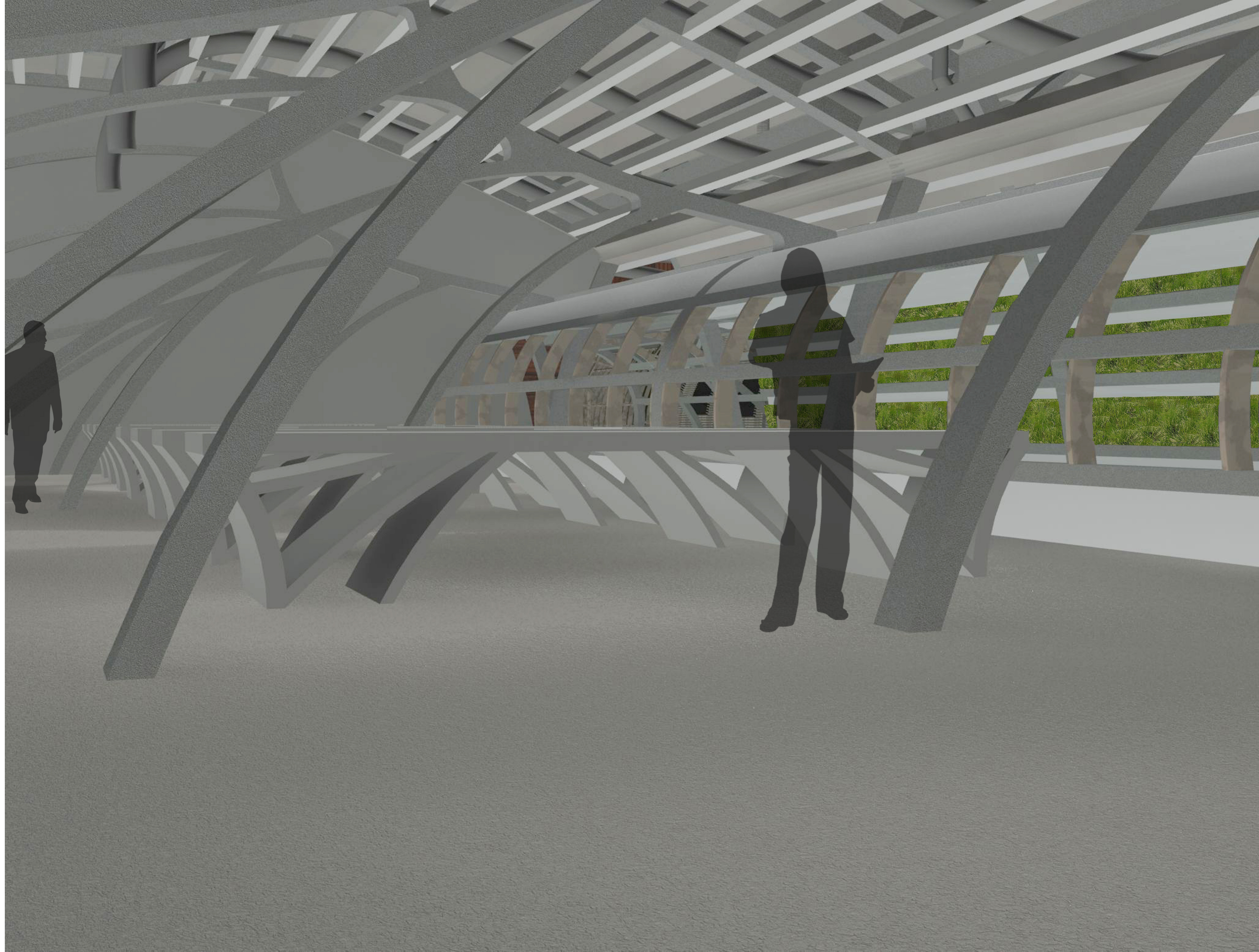
# WATER RESOURCE EXPERIMENTATION STATION





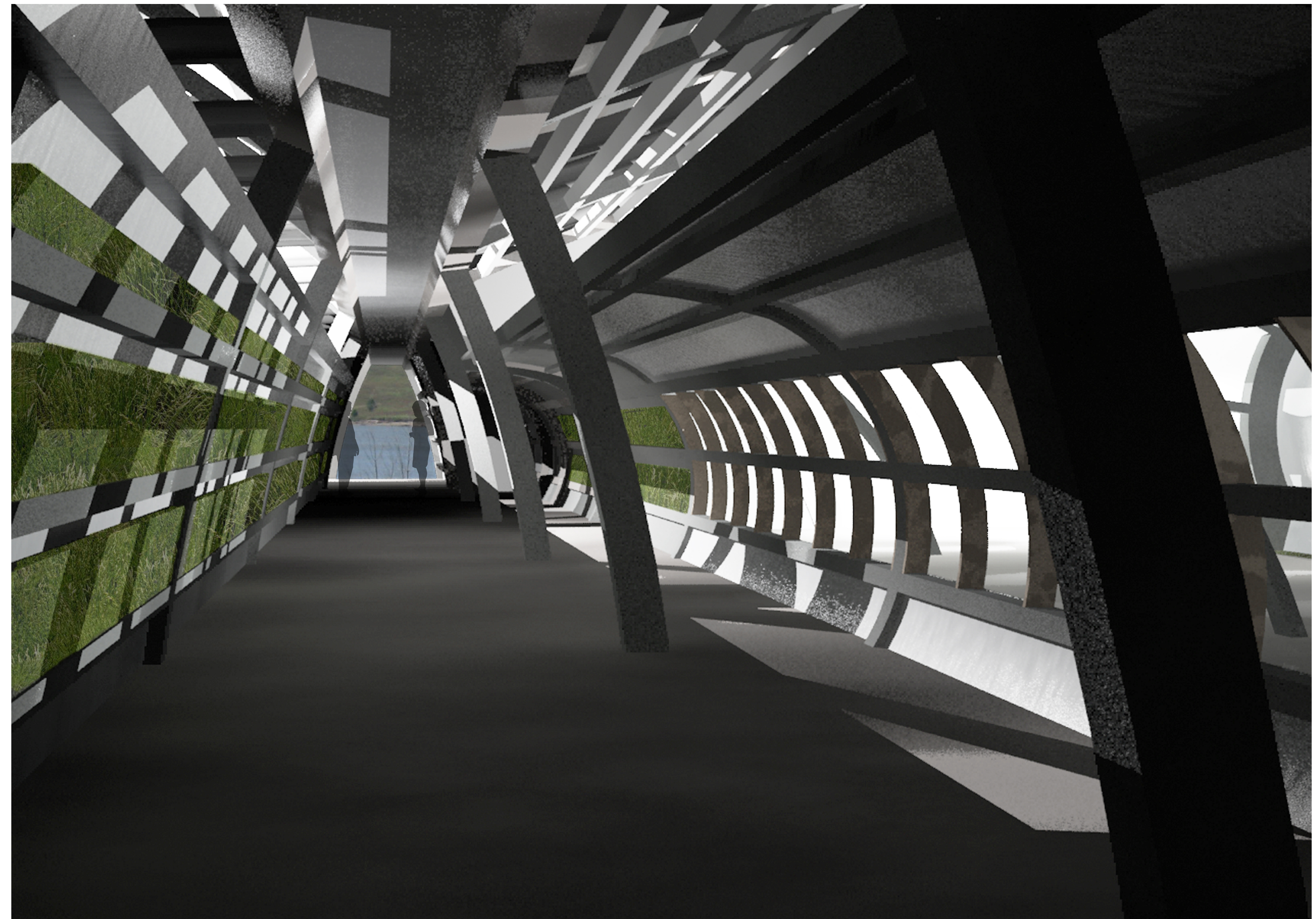
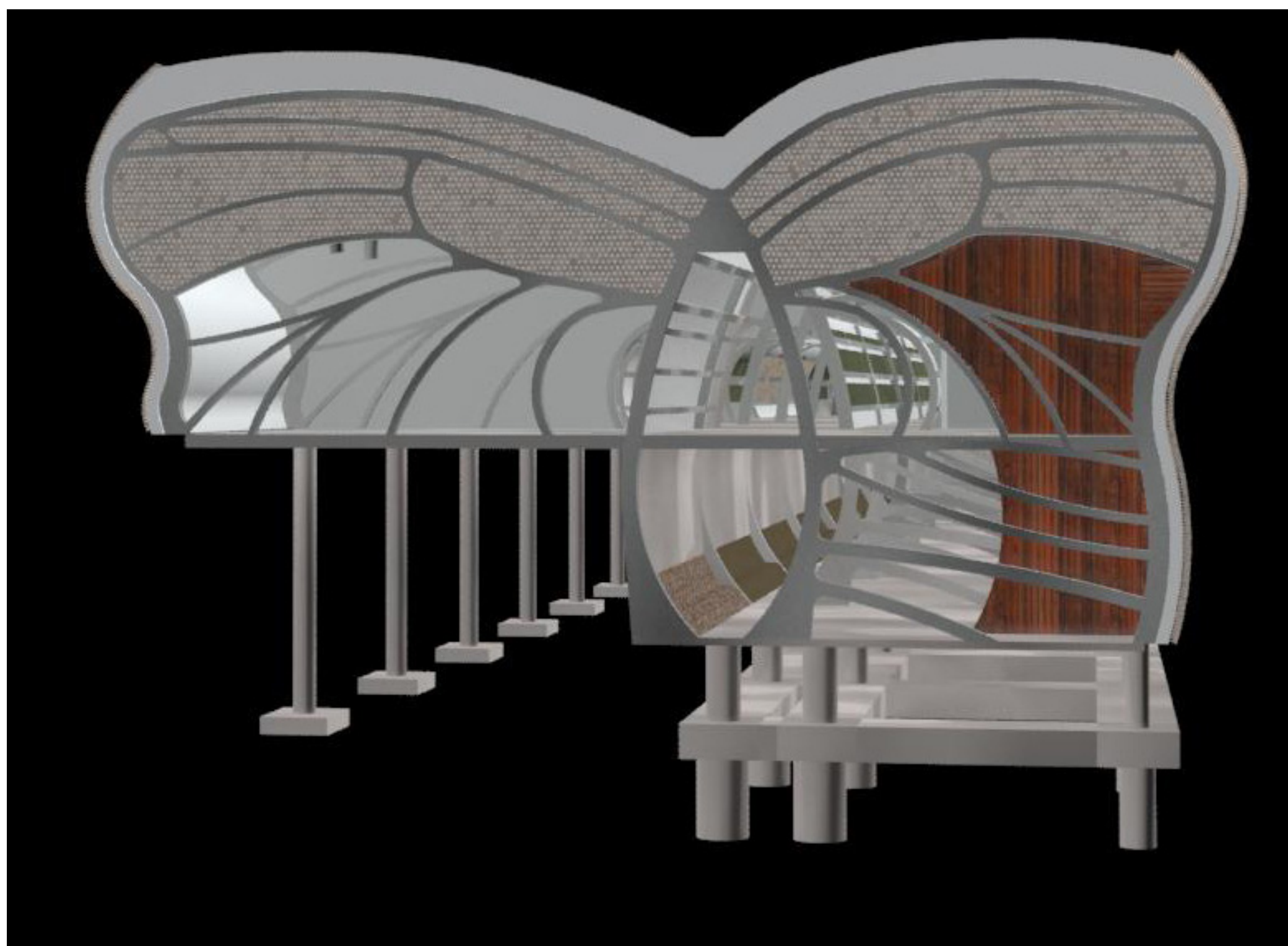
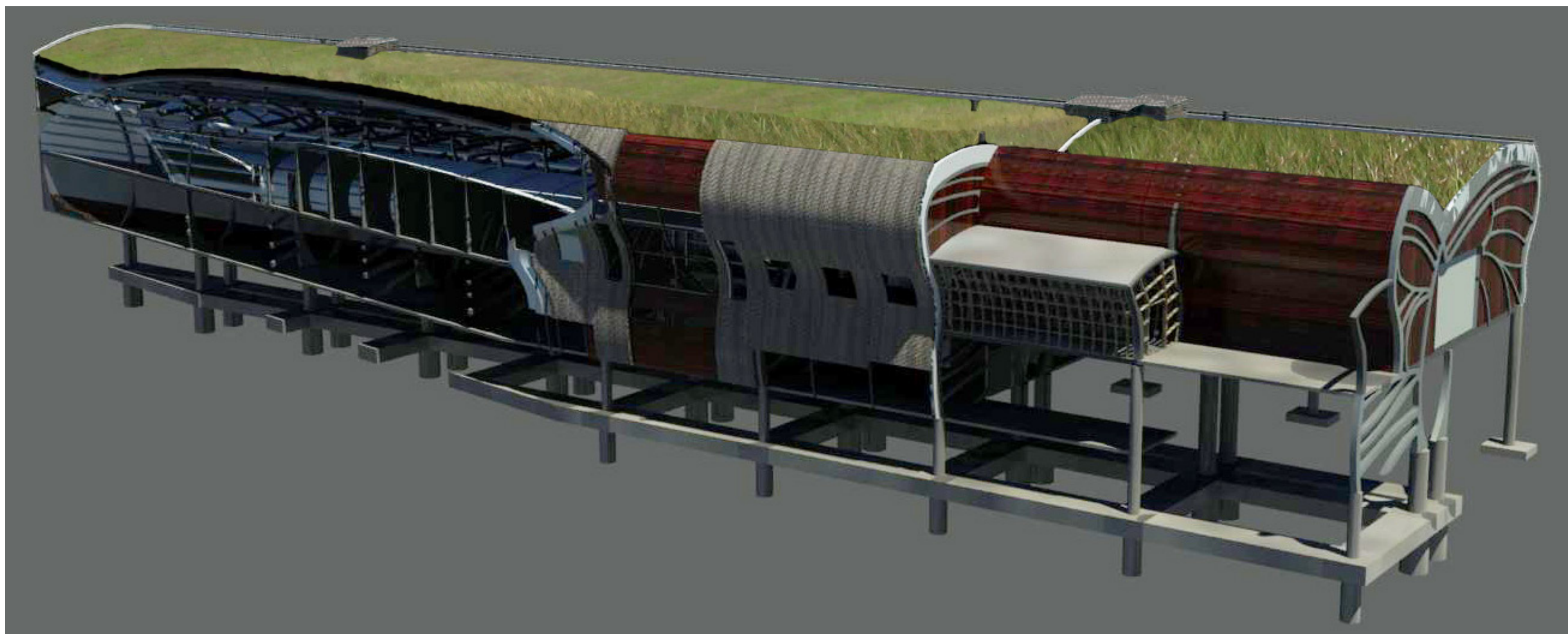
WATER RESOURCE EXPERIMENTATION STATION





WATER RESOURCE EXPERIMENTATION STATION





WATER RESOURCE EXPERIMENTATION STATION