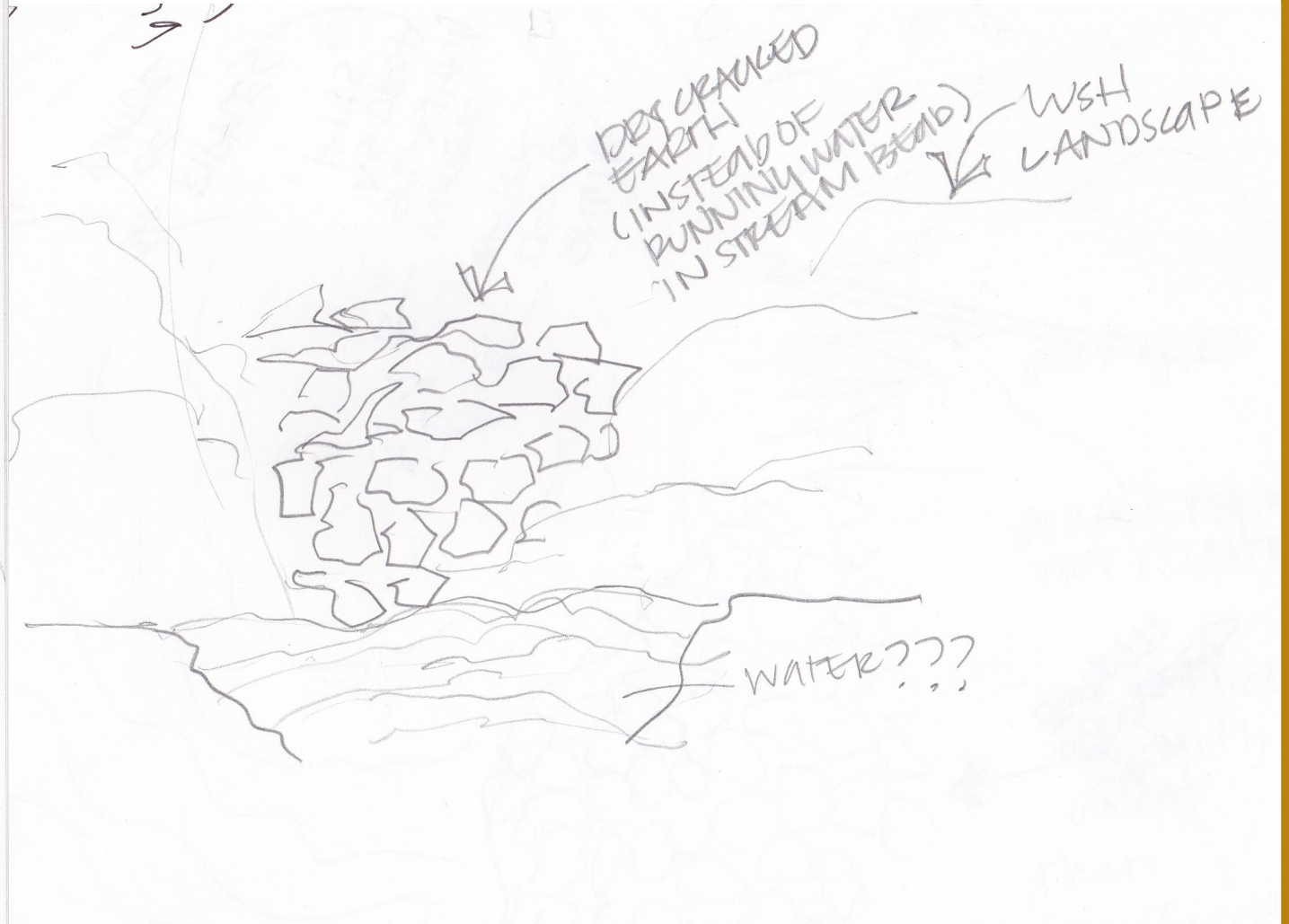
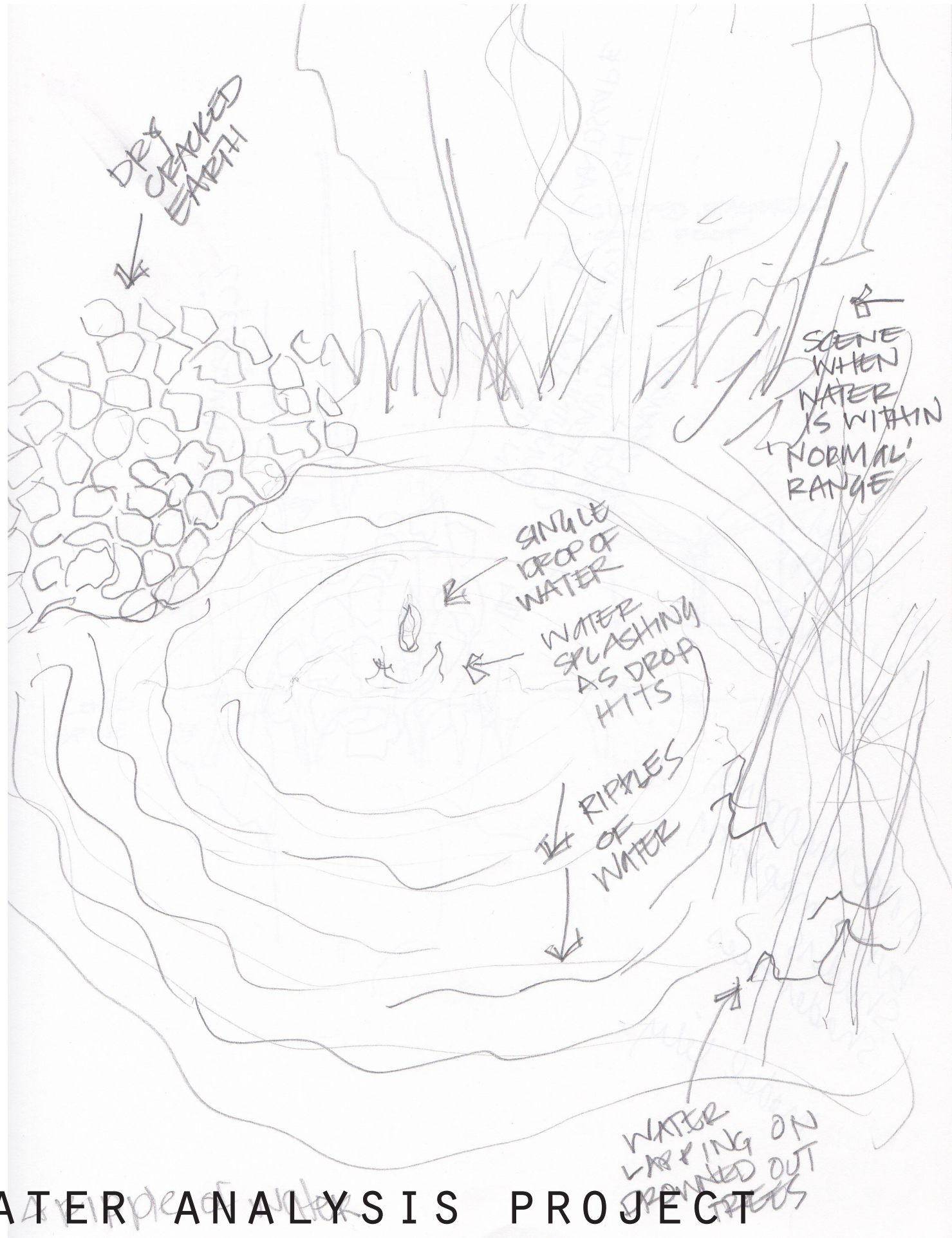
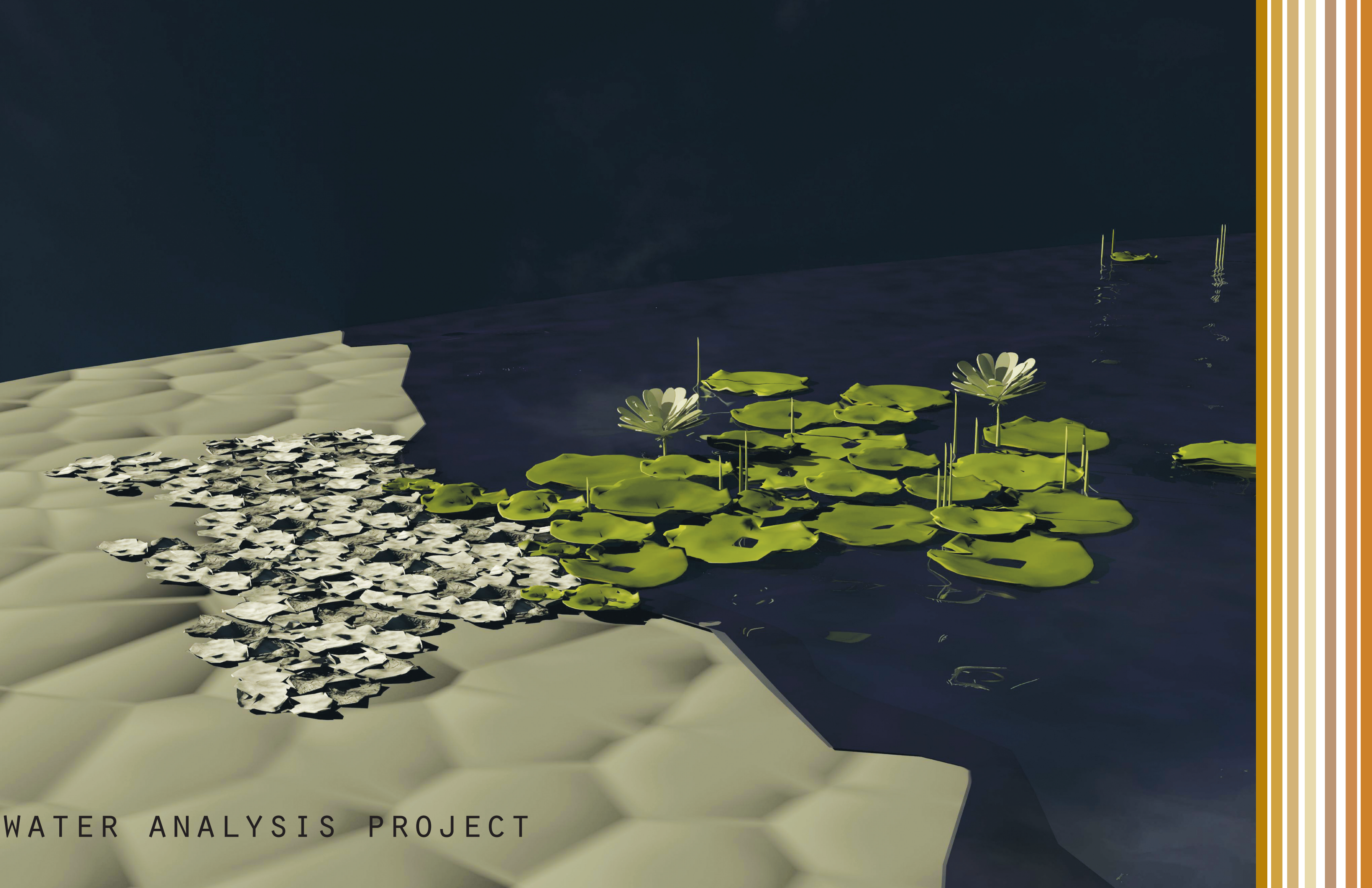


WATER RESOURCE EXPERIMENTATION STATION

ELIZABETH MEDD
ARCH 771
PROFESSOR MARK BARNHOUSE

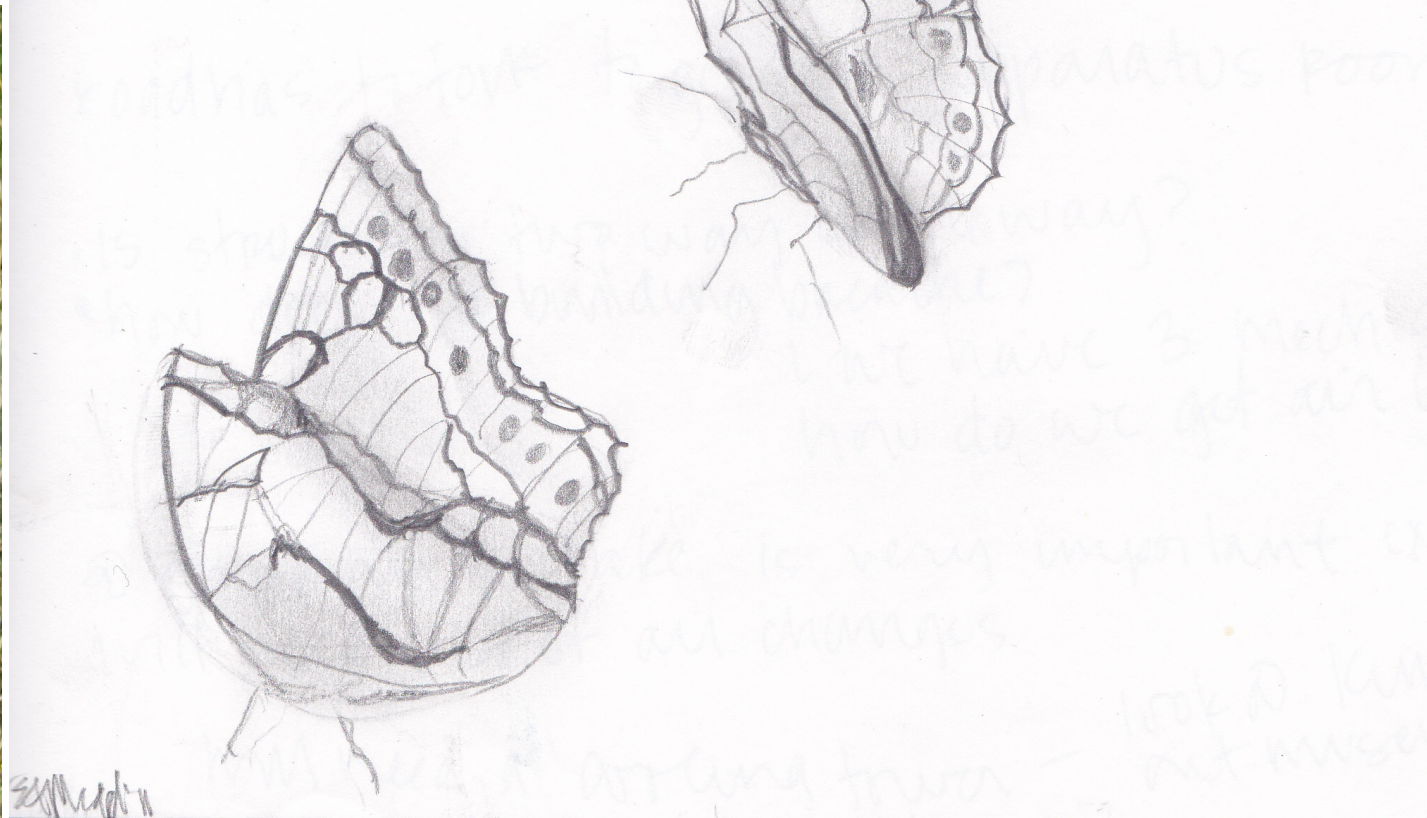
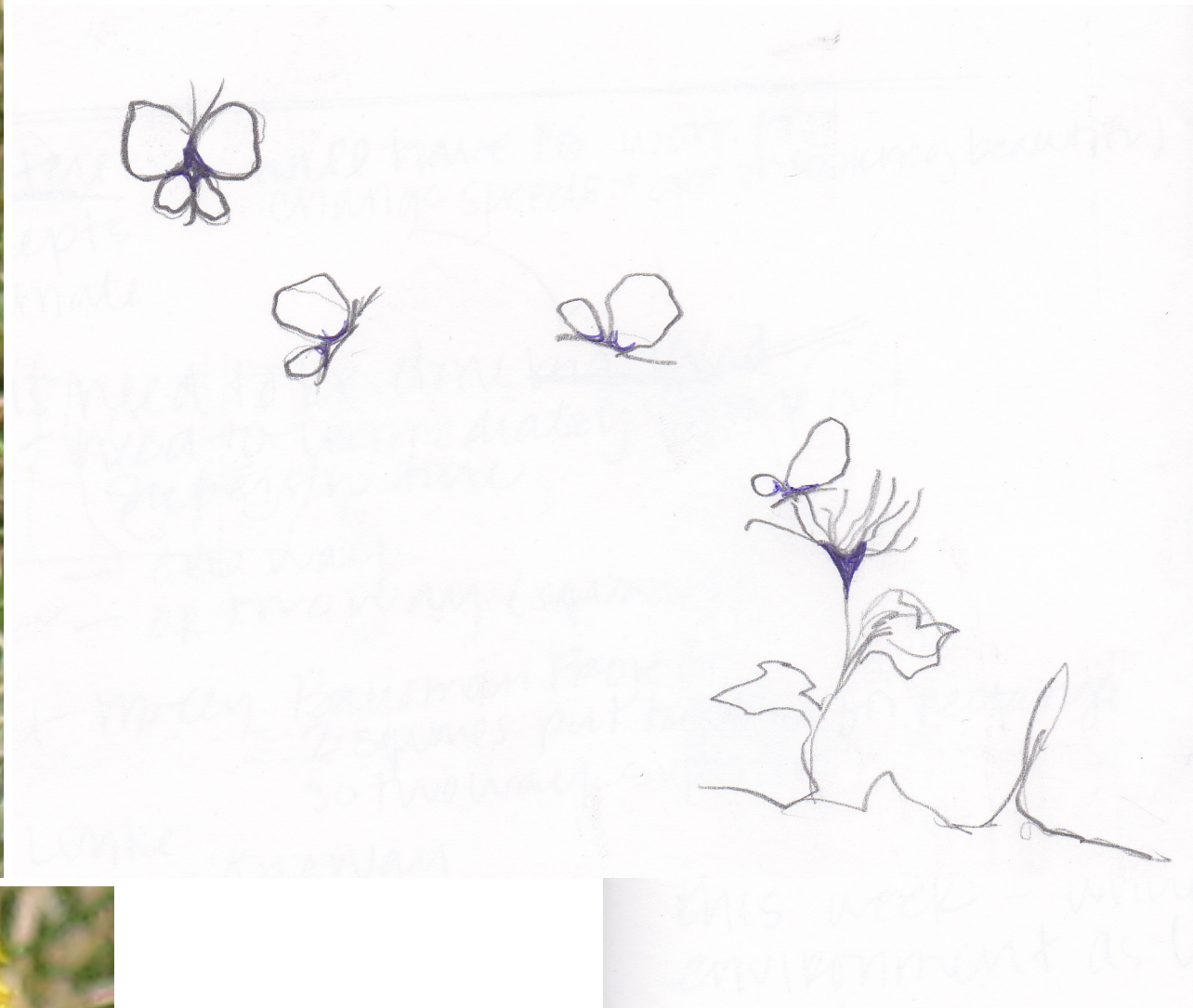


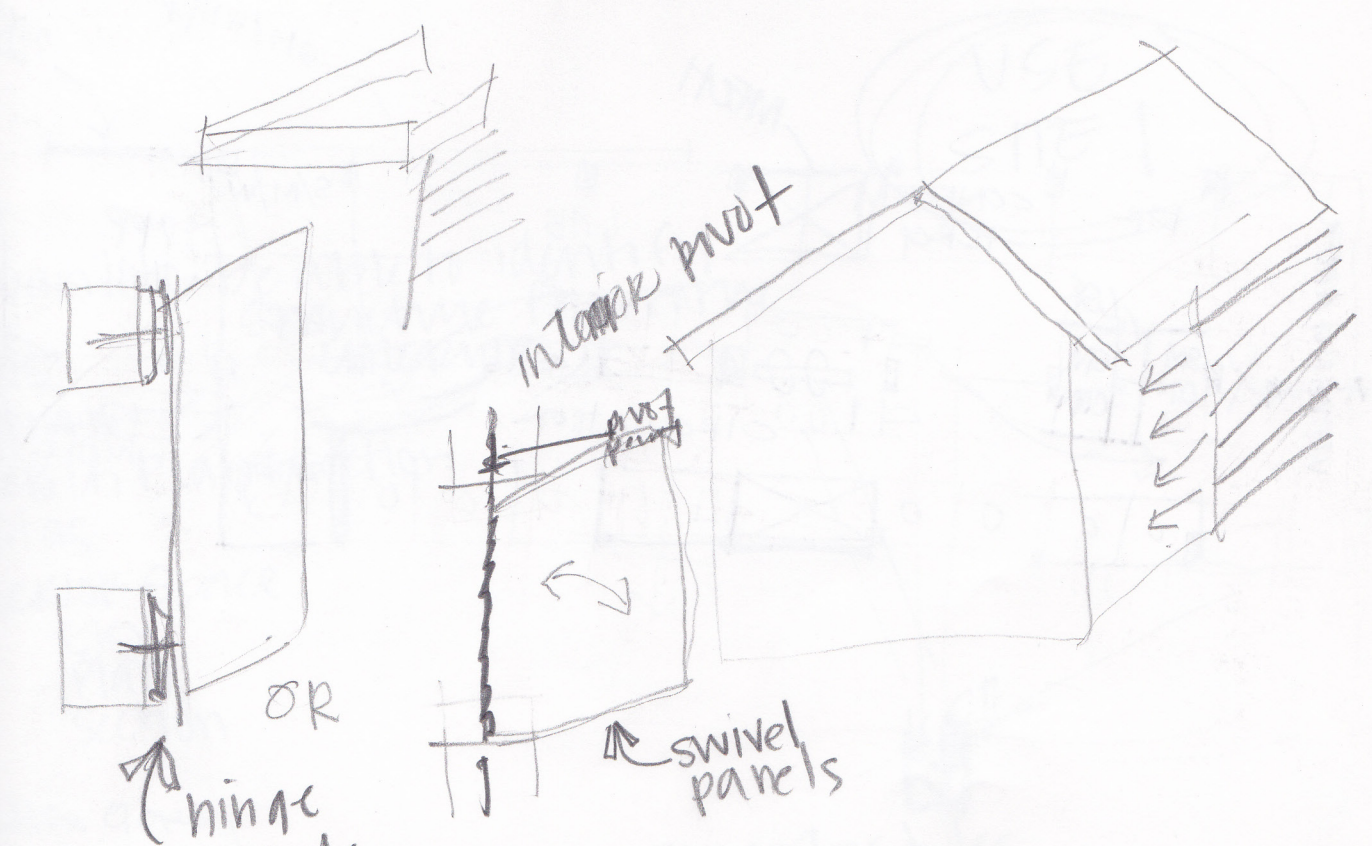
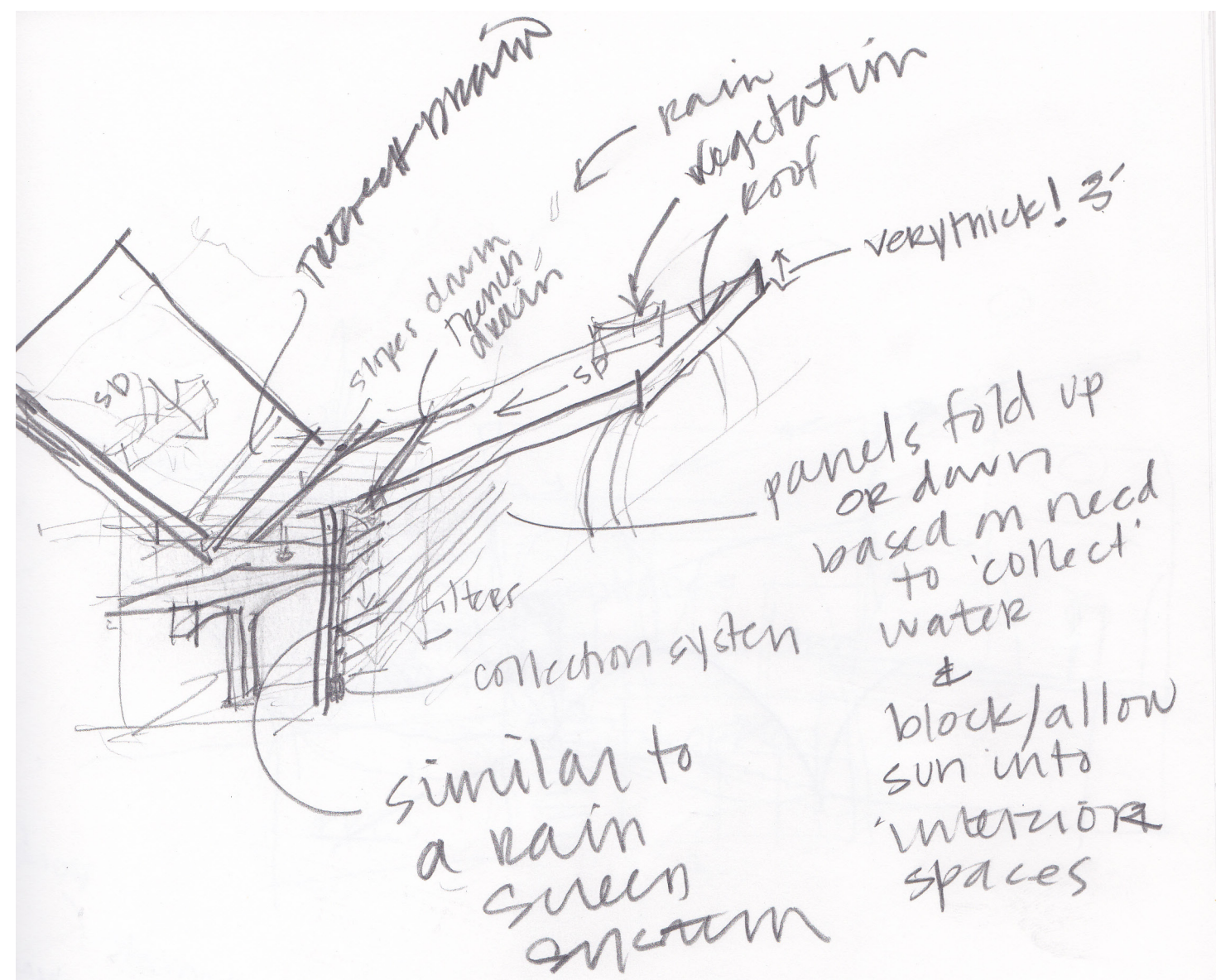
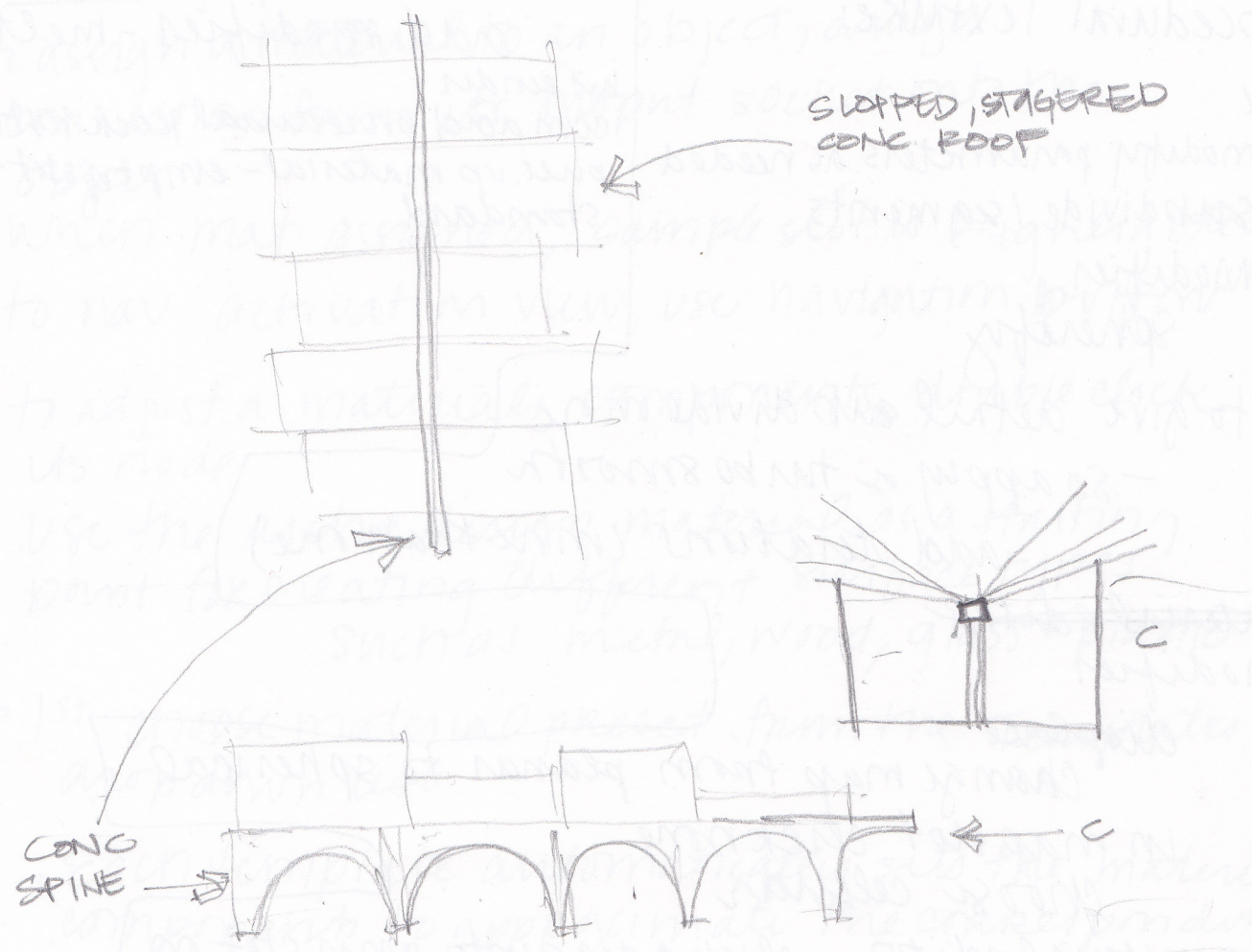
WATER ANALYSIS PROJECT



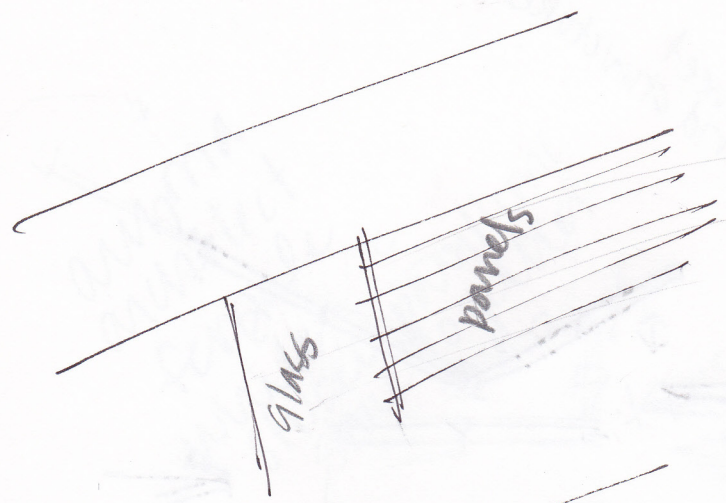


PART 15

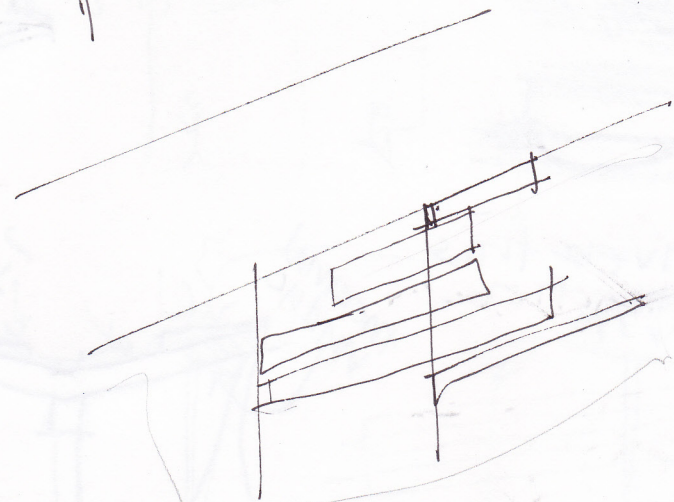




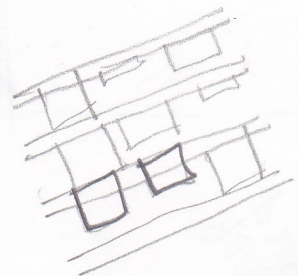
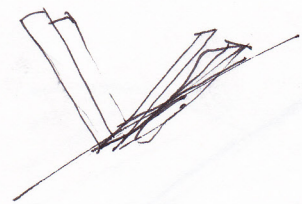
PROCESS



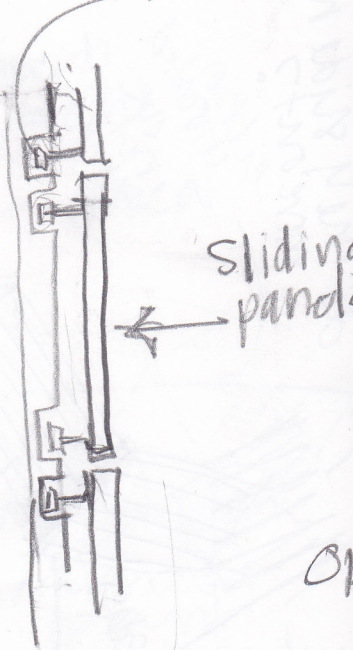
needed as much sun as possible



letting sun in & blocking as necessary



Tracks in reveals

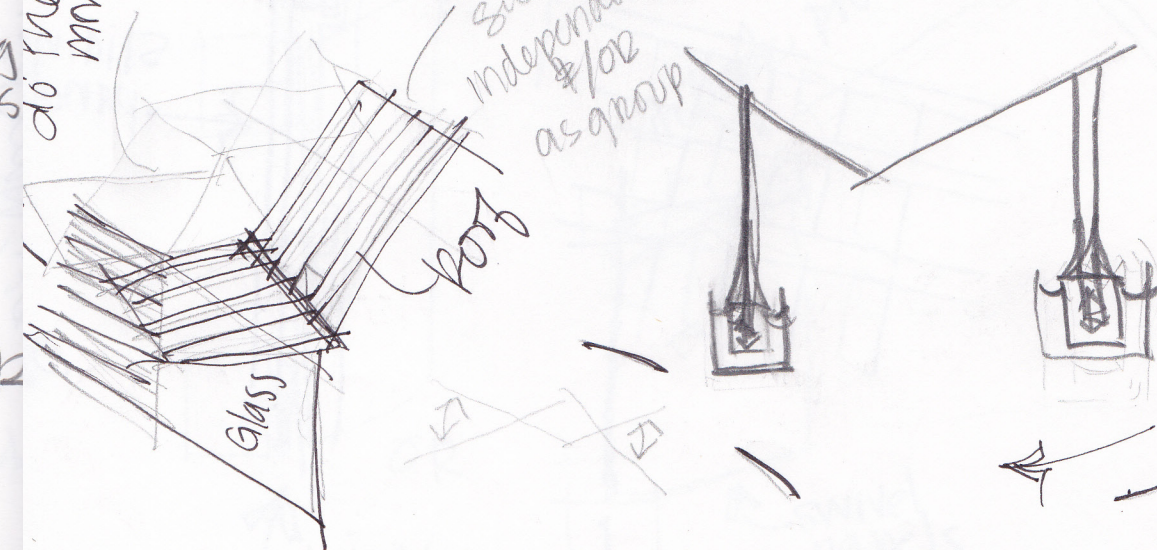


sliding panels

do they slide over?

either invented or not this area has vegetated roof

movable sections independently & / or as group

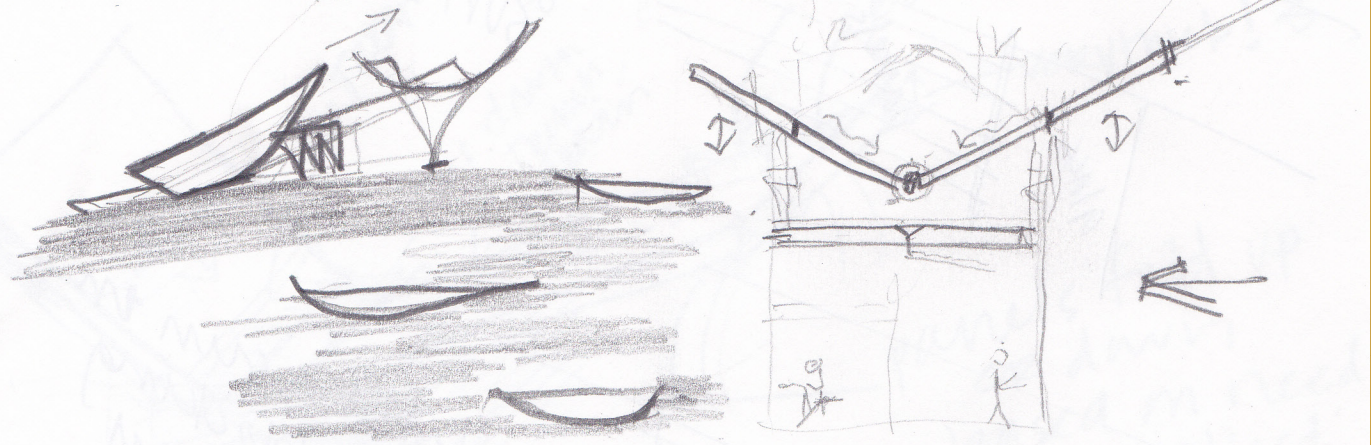


glass

downhill

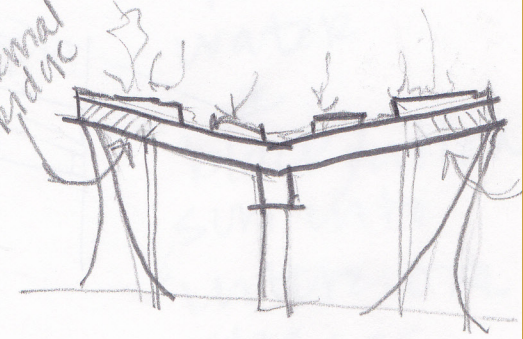
path of the butterfly

could even be panels that glide to meet 2nd structure



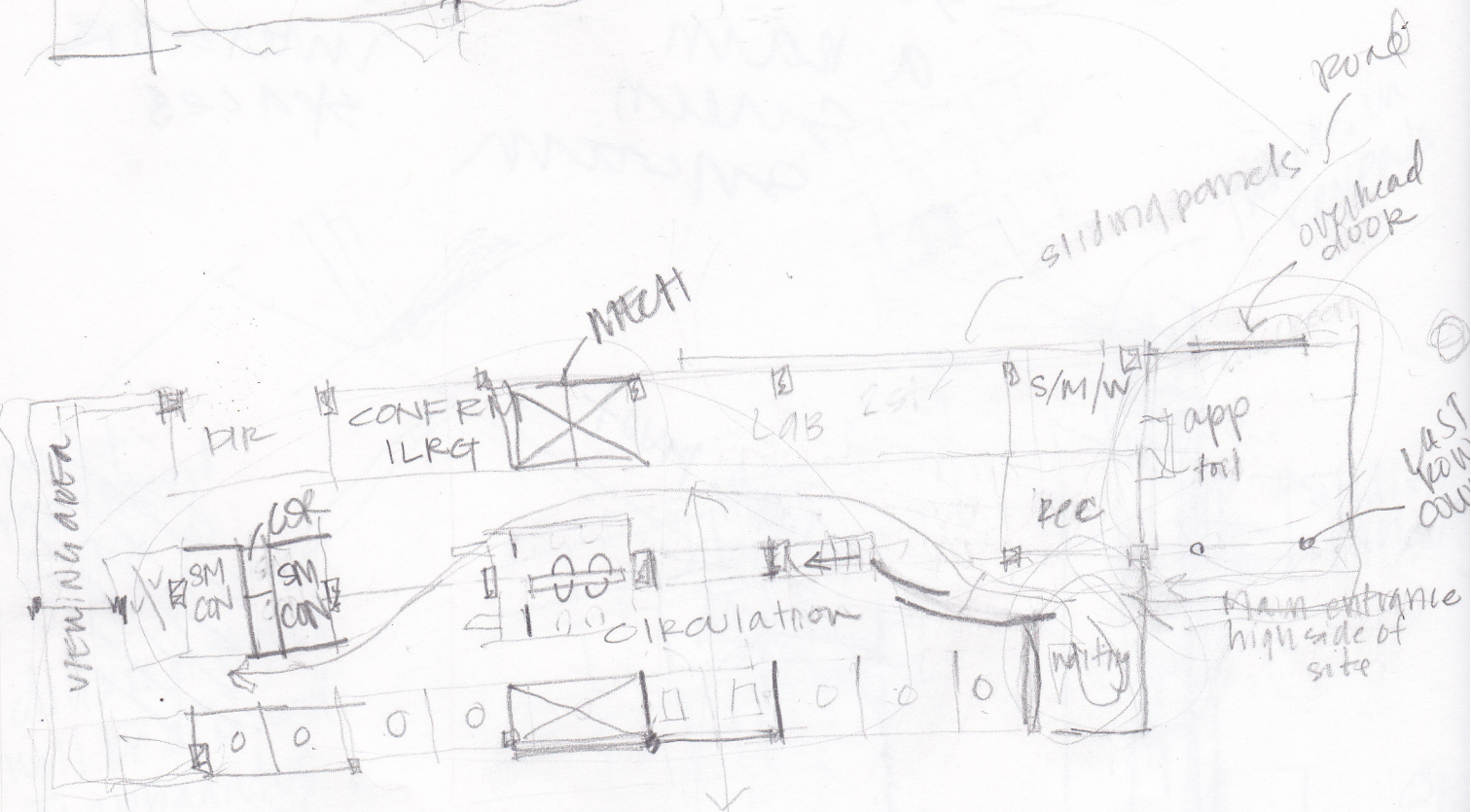
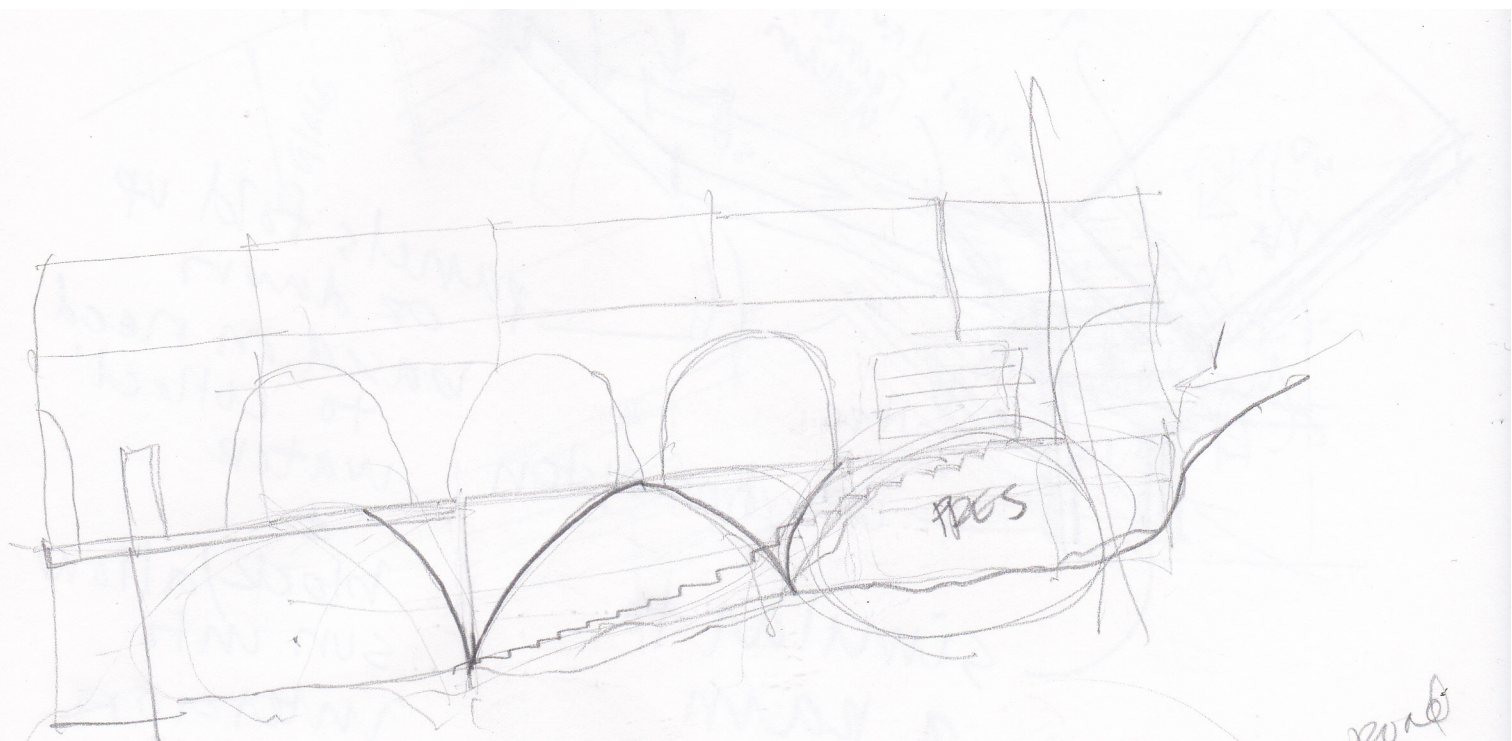
river this direction

thermal bridging

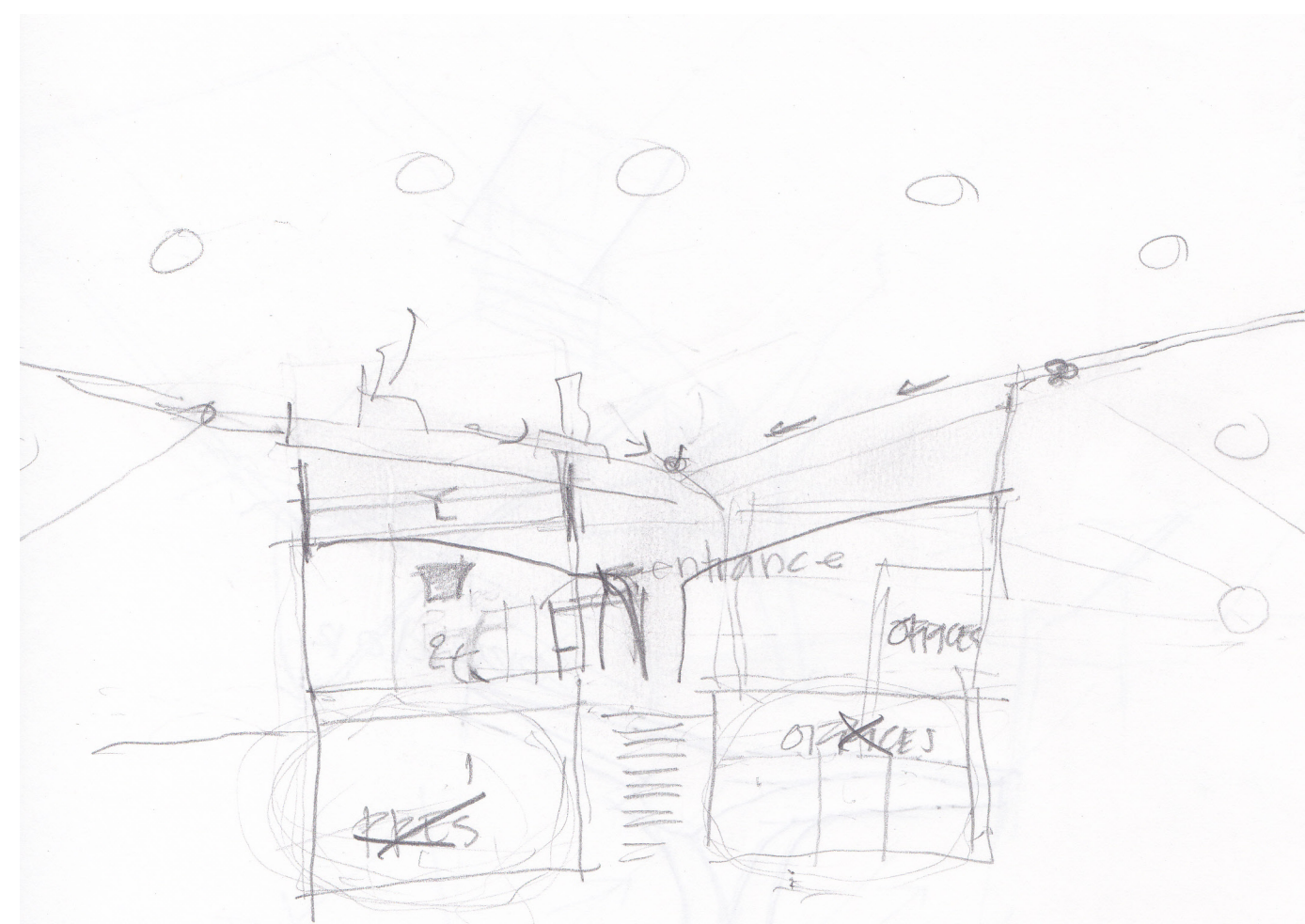
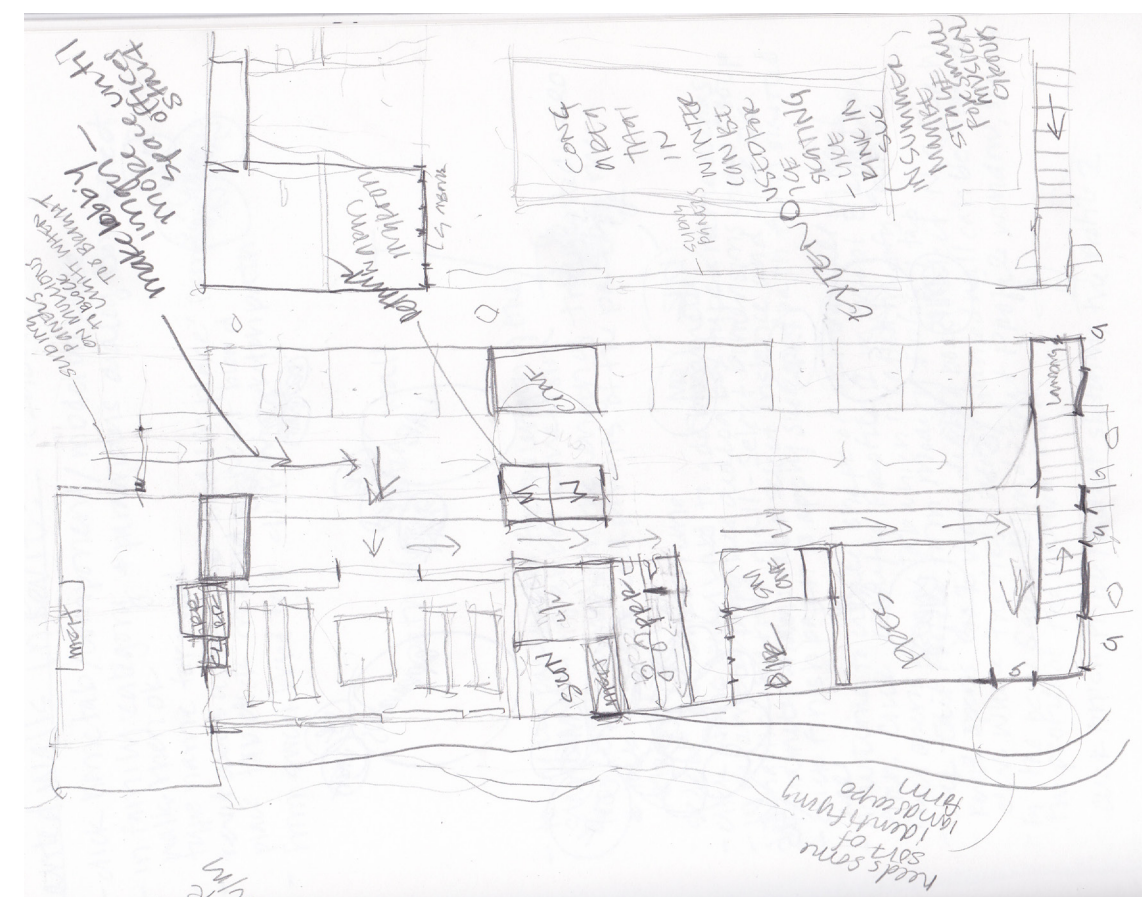


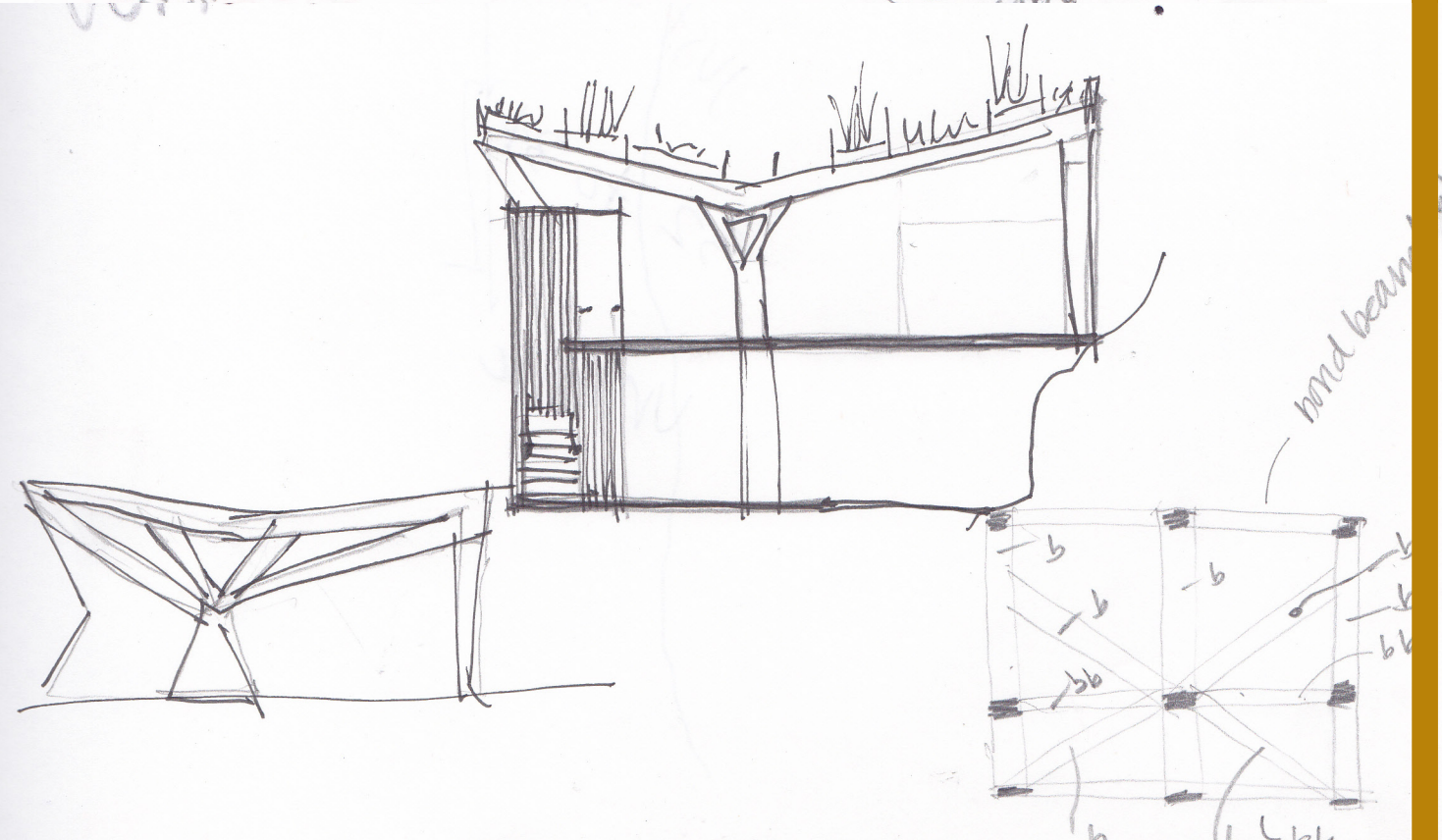
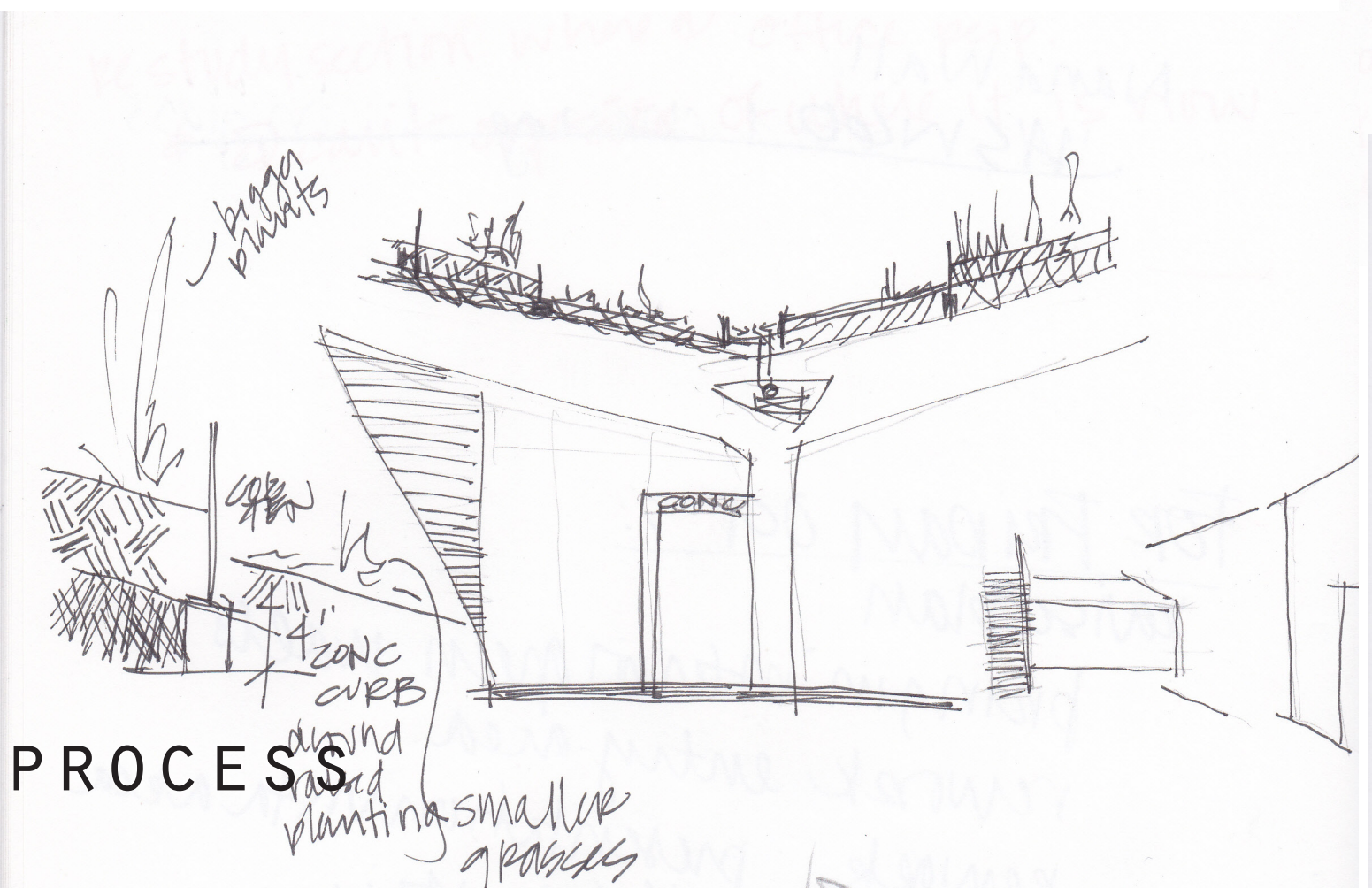
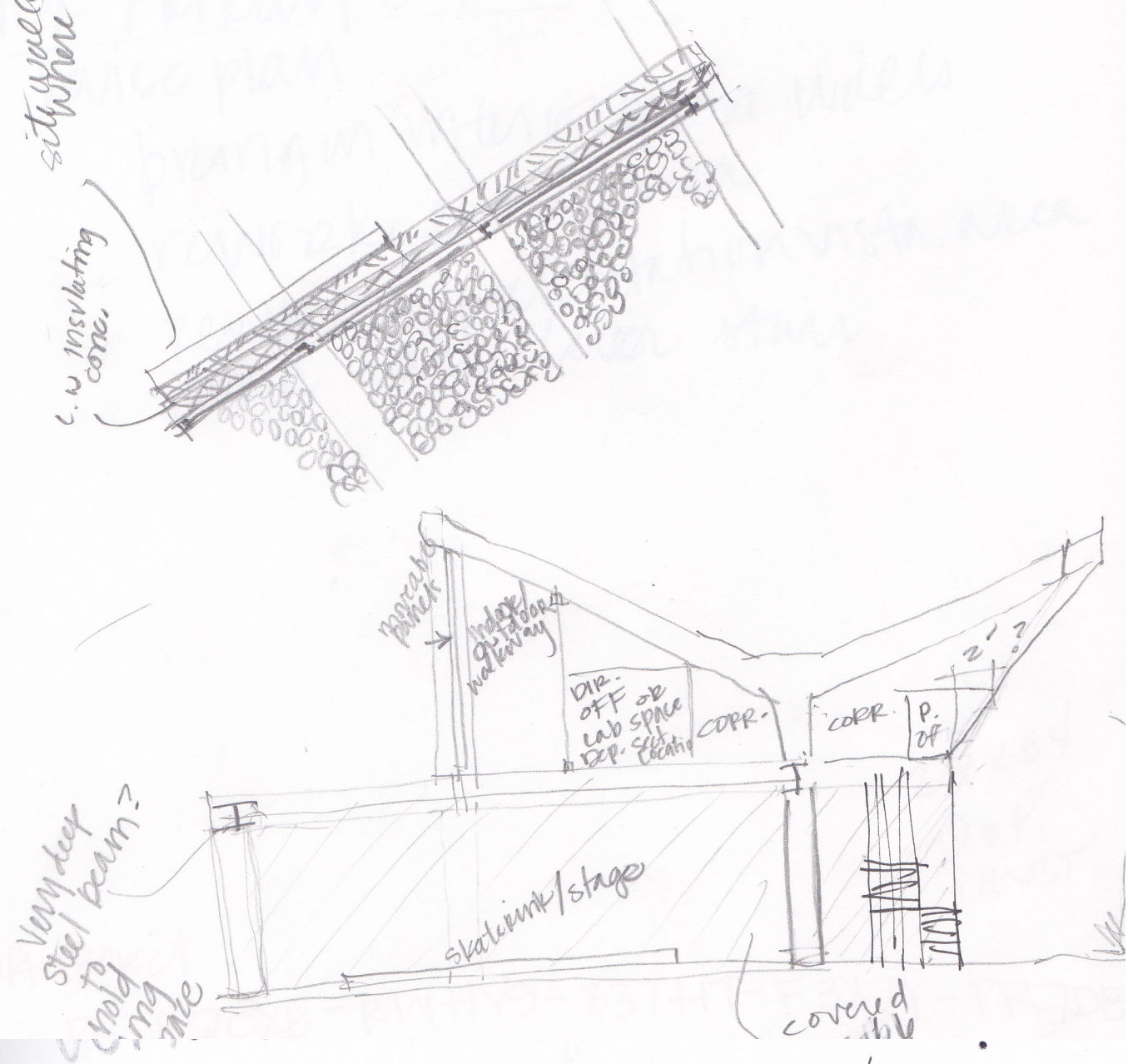
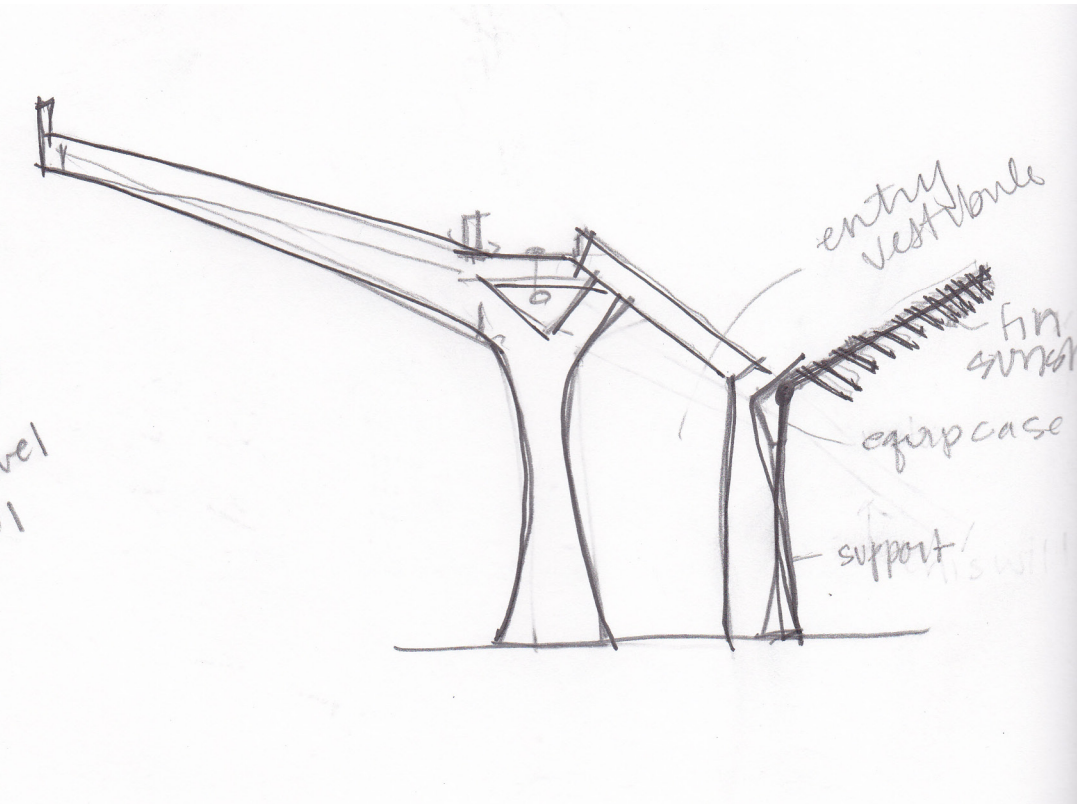
most movement occur @ offices - diffused light will be allowed @ apparatus room & @ labs

PROCESS

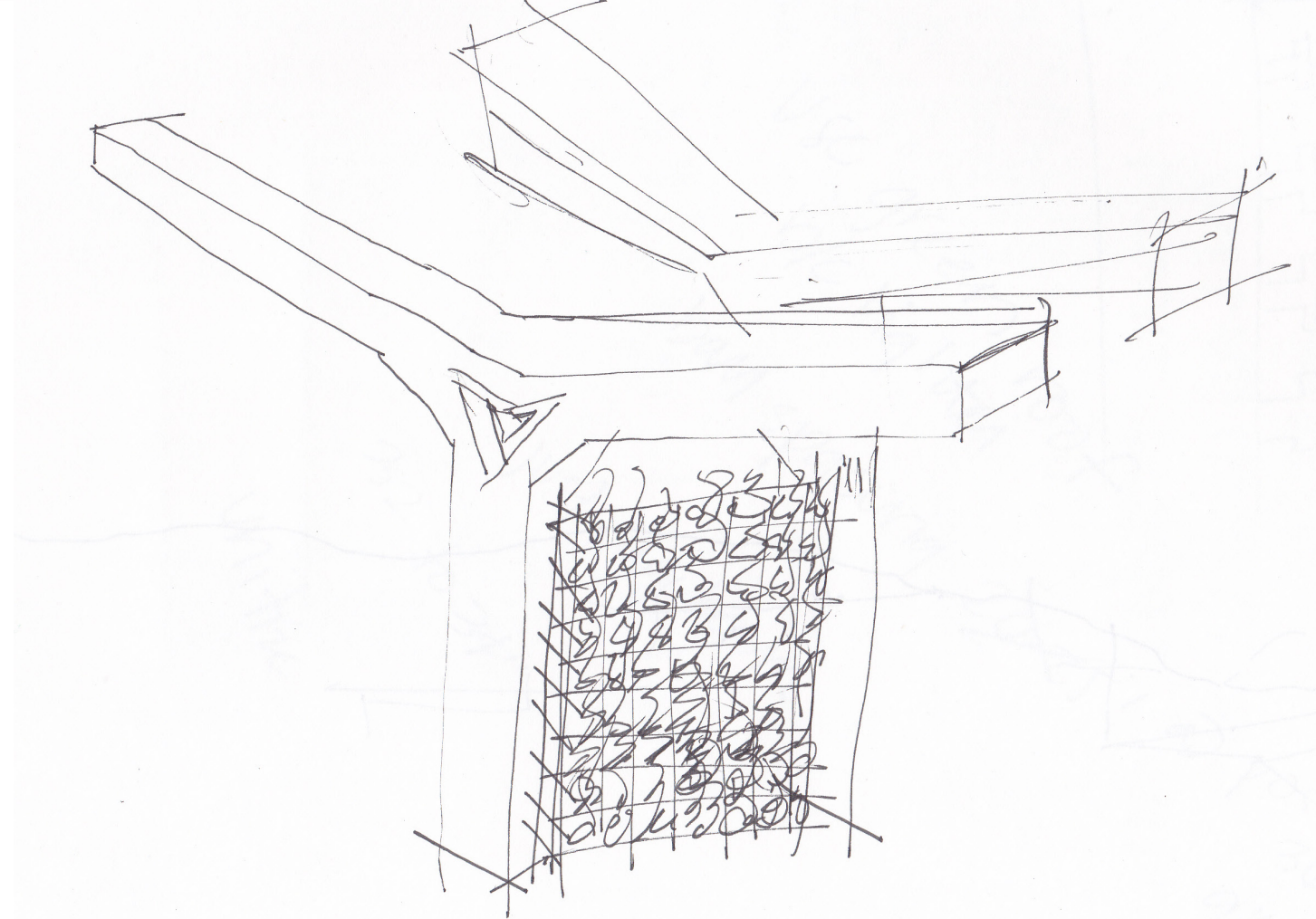
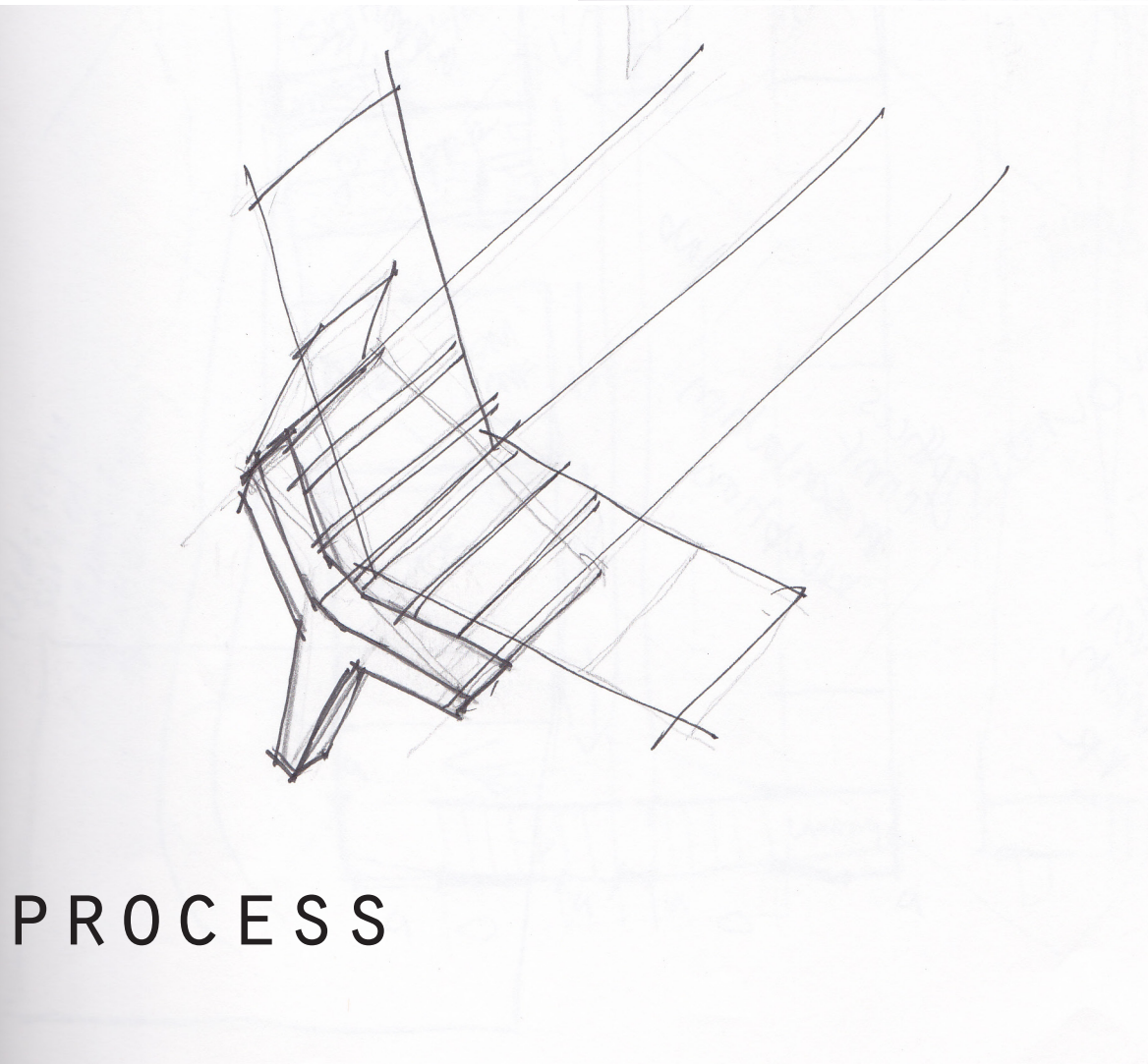
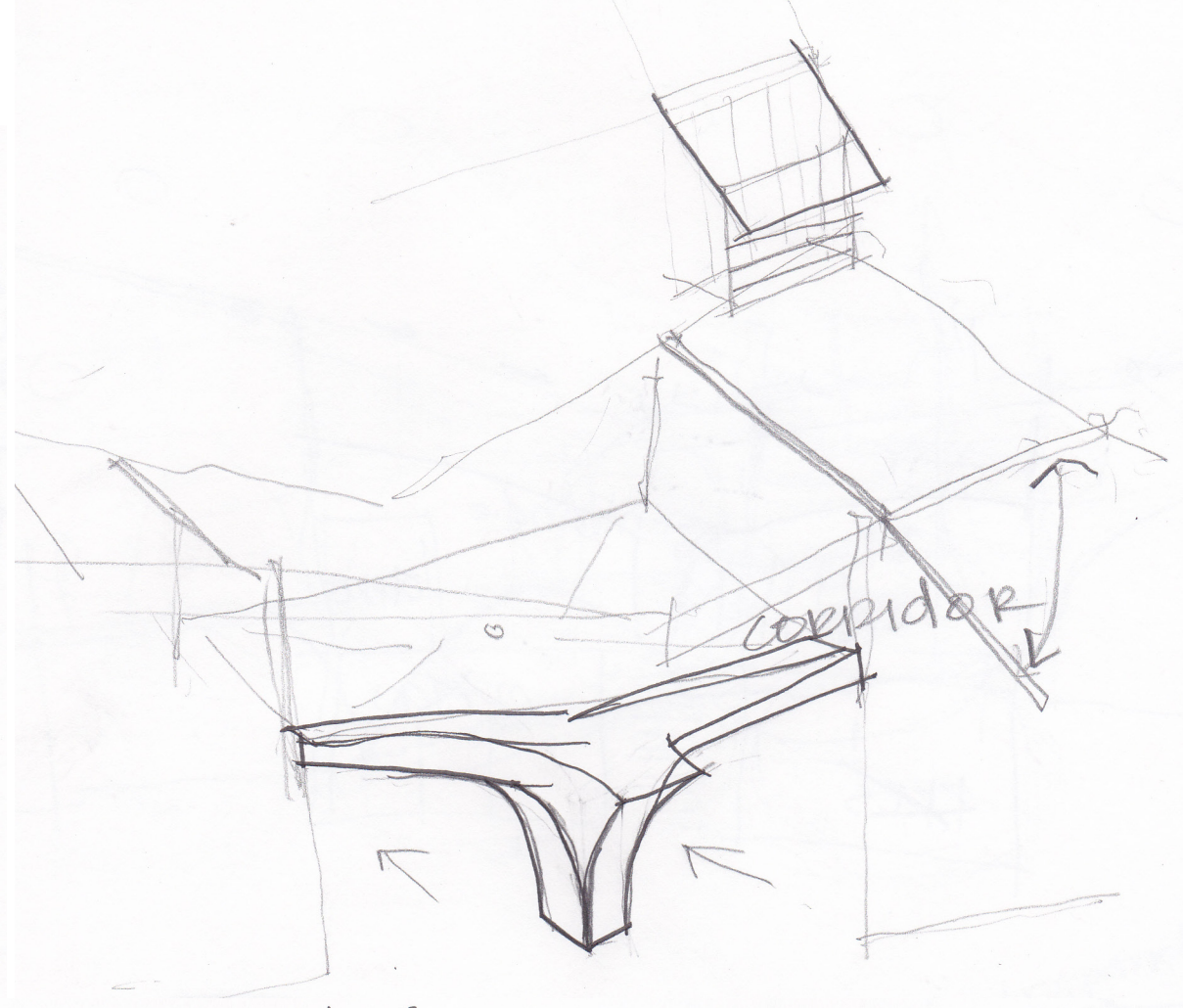
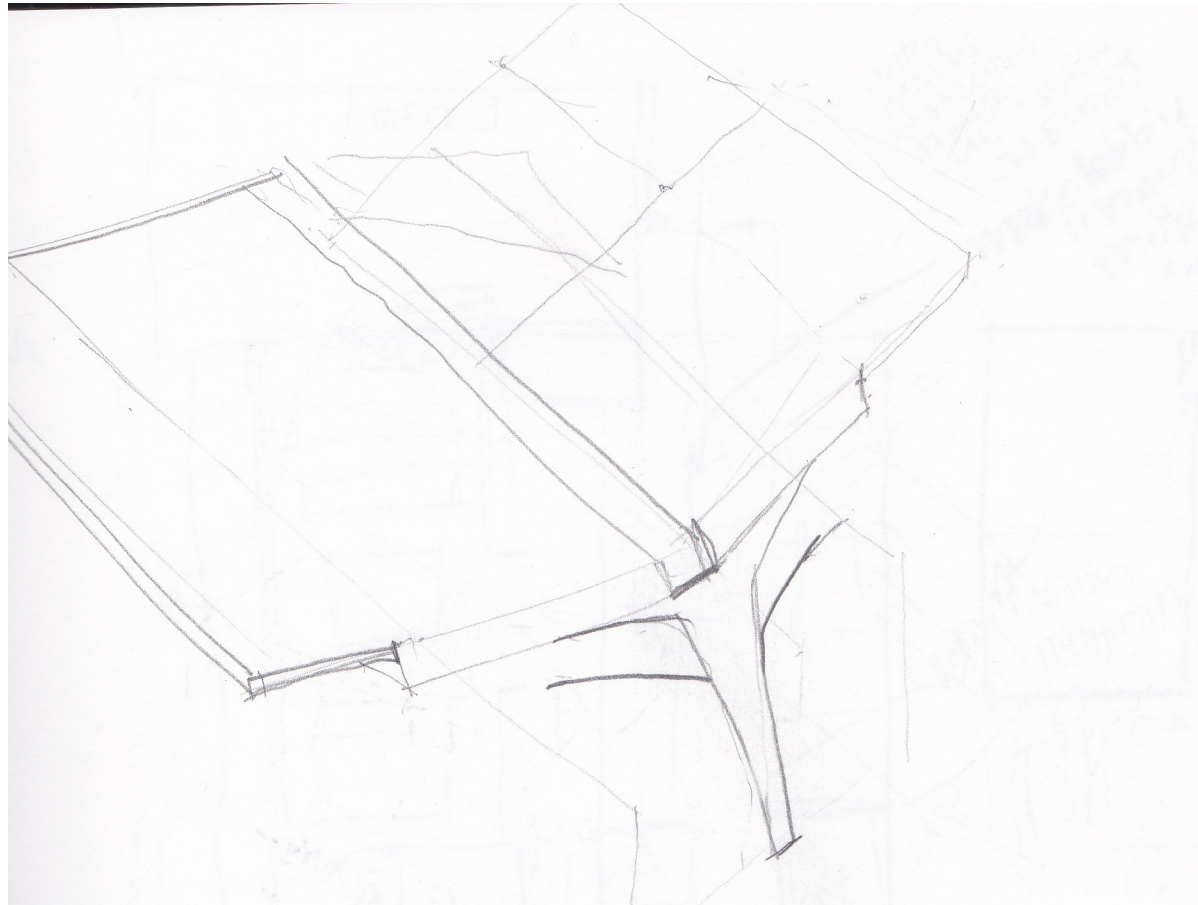


PROCESS



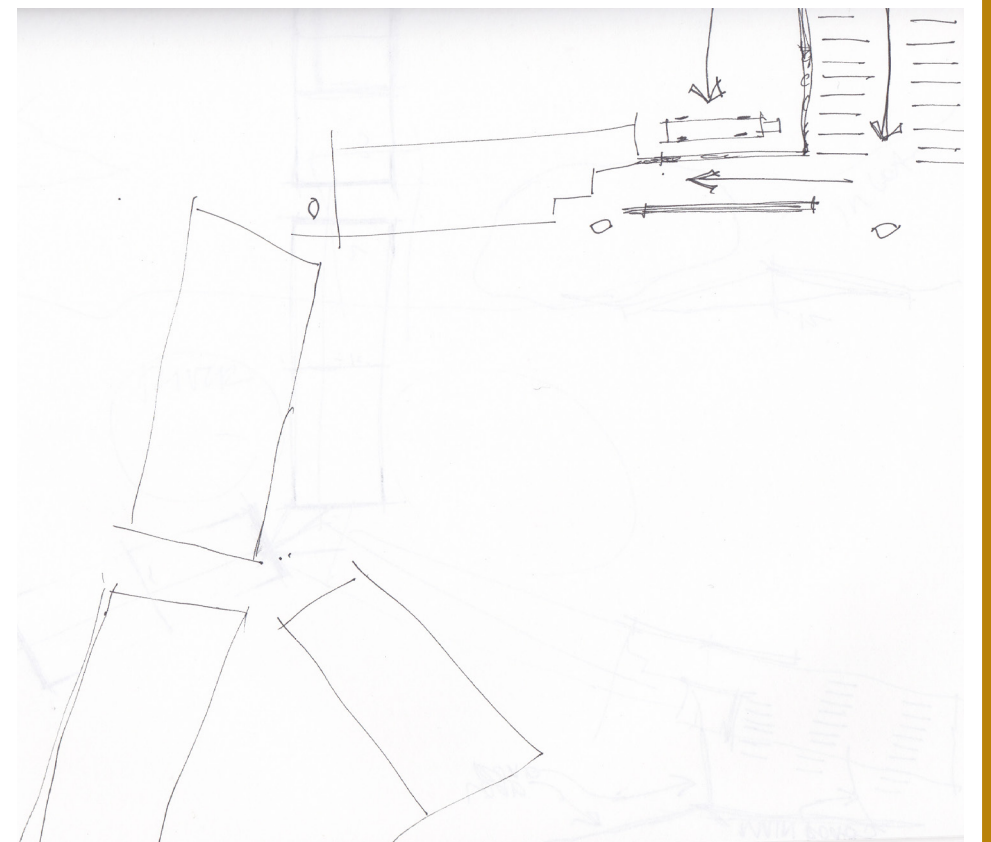
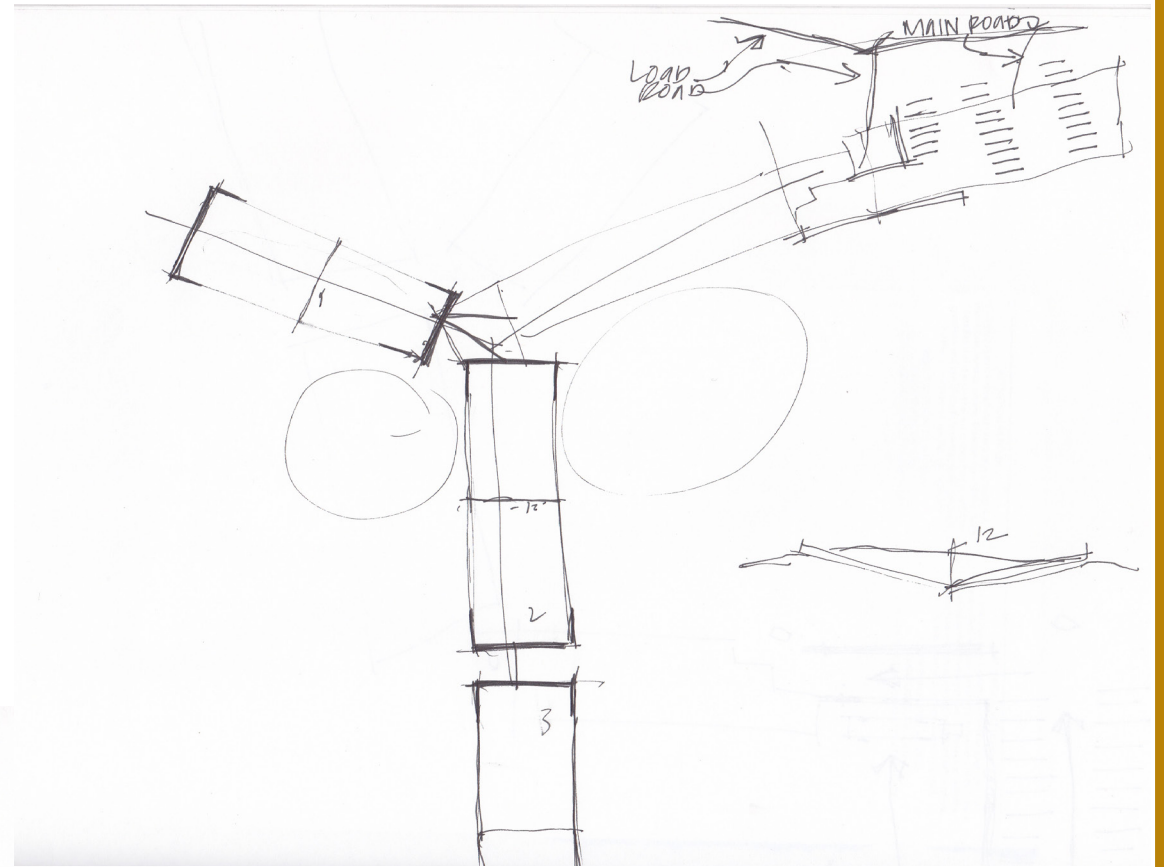
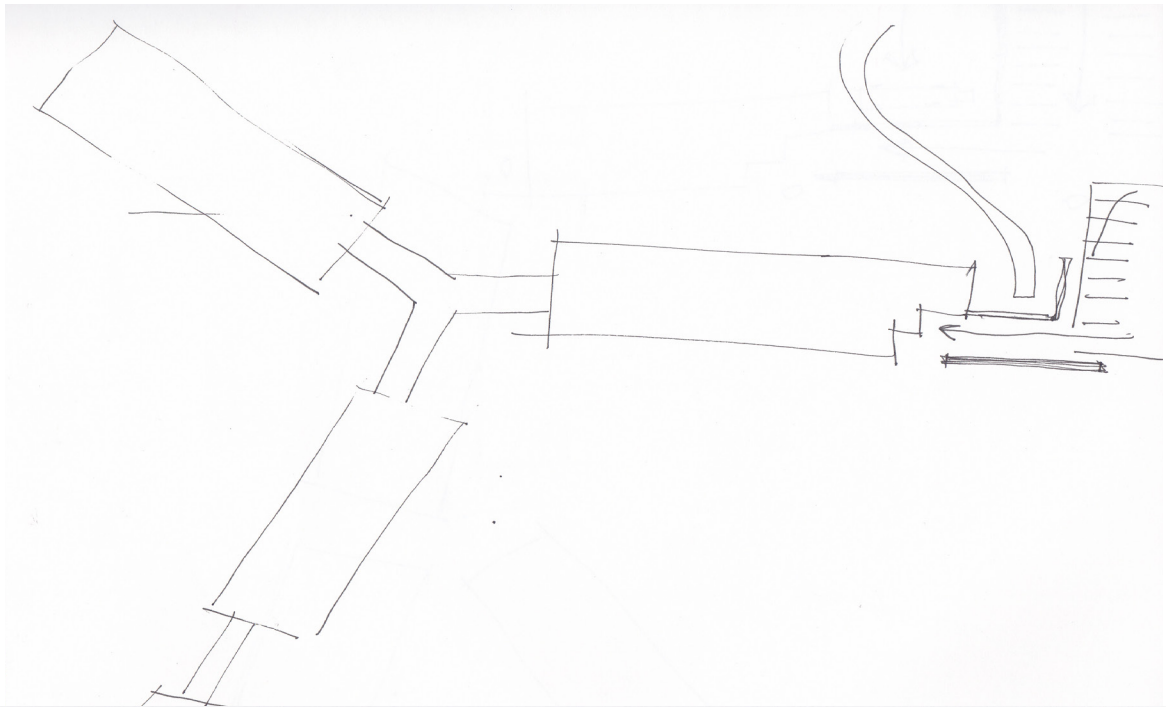


PROCESS

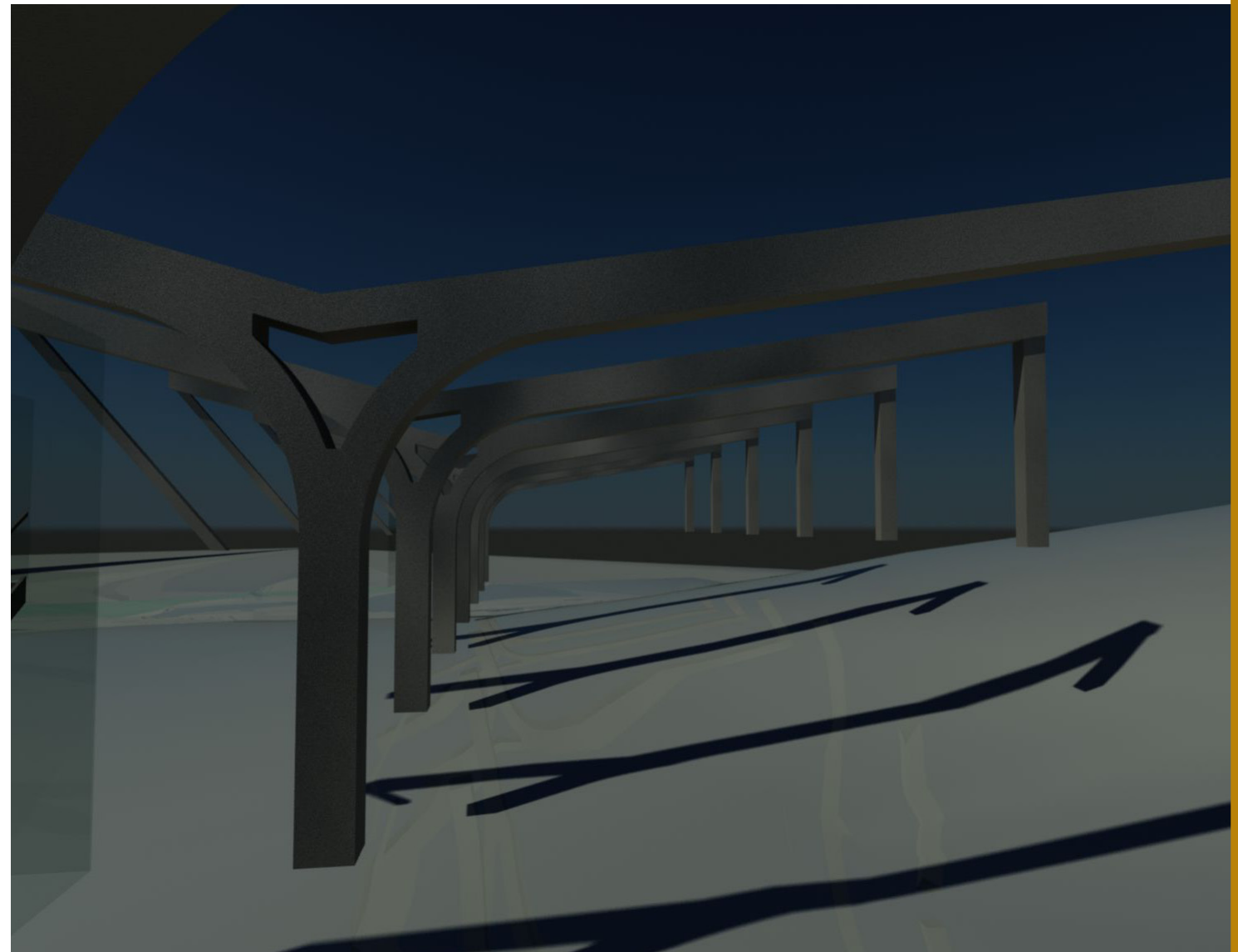
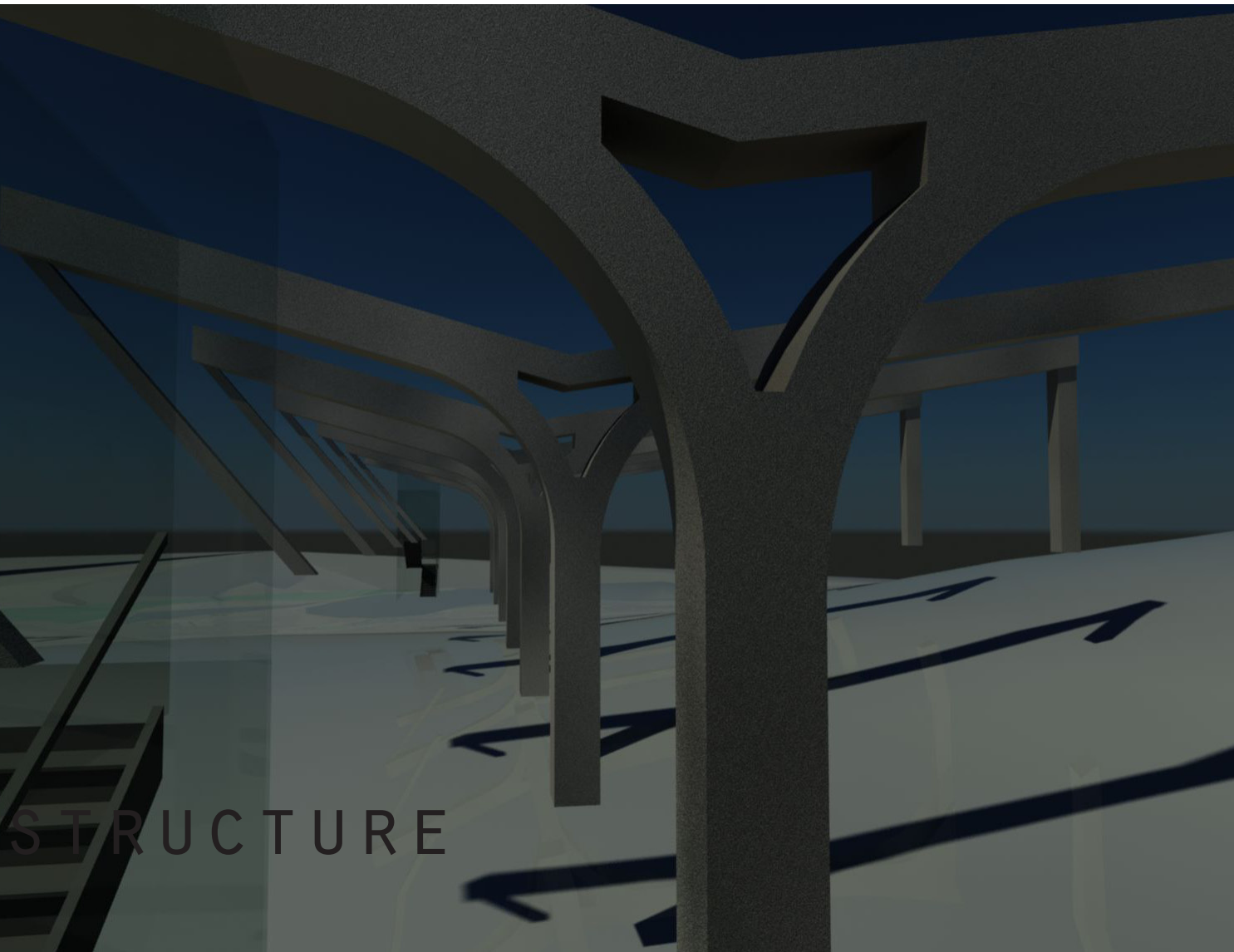
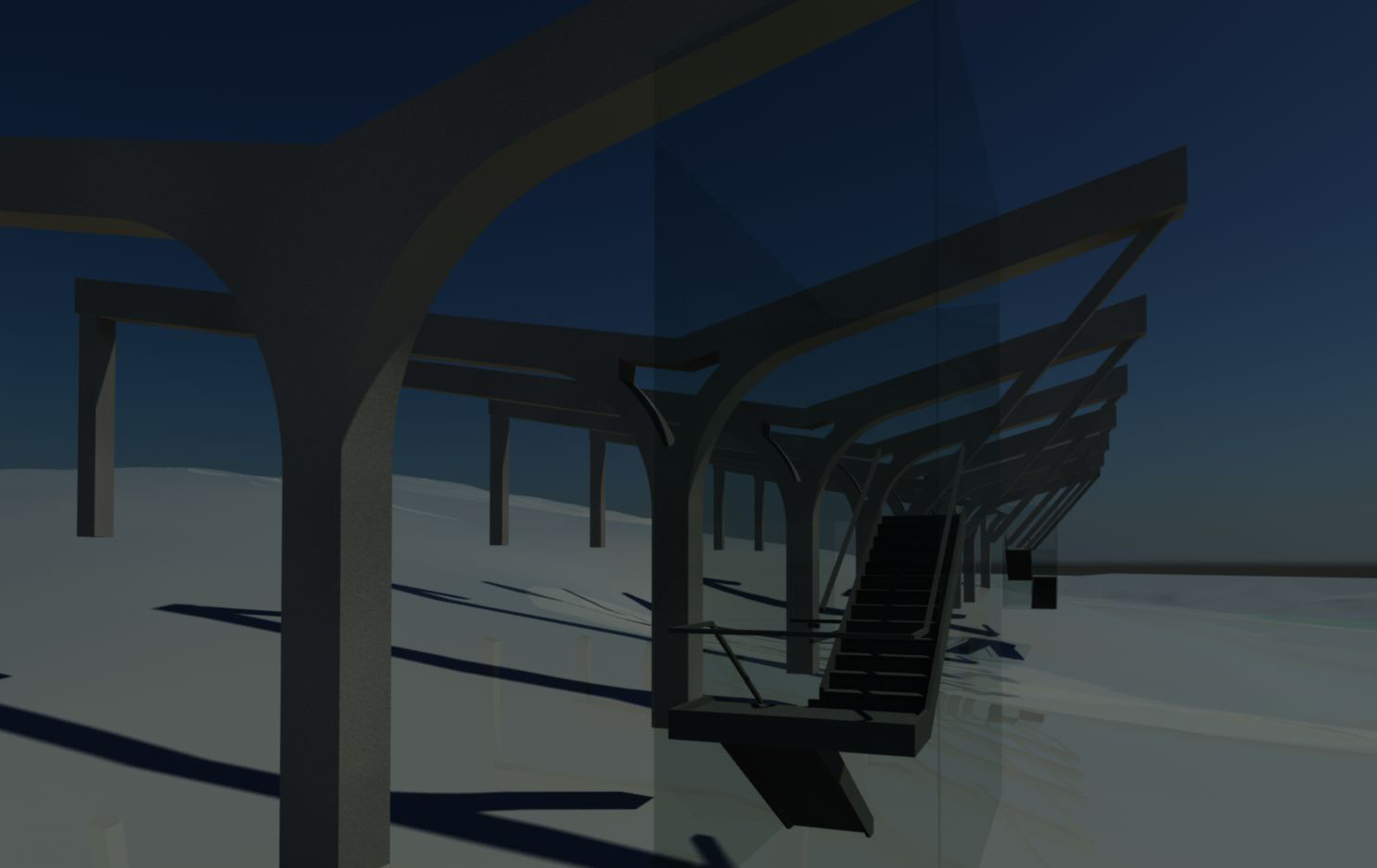


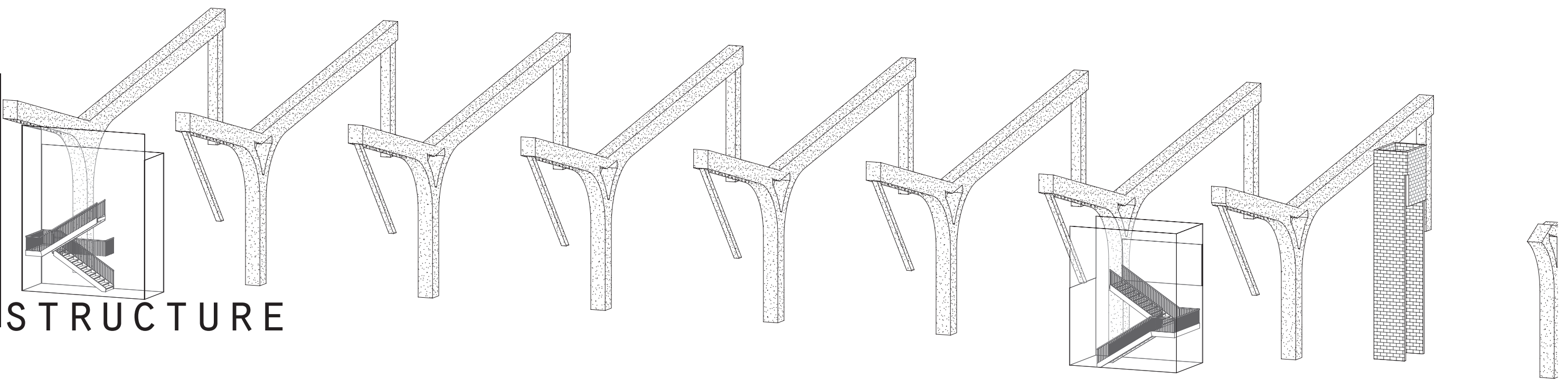
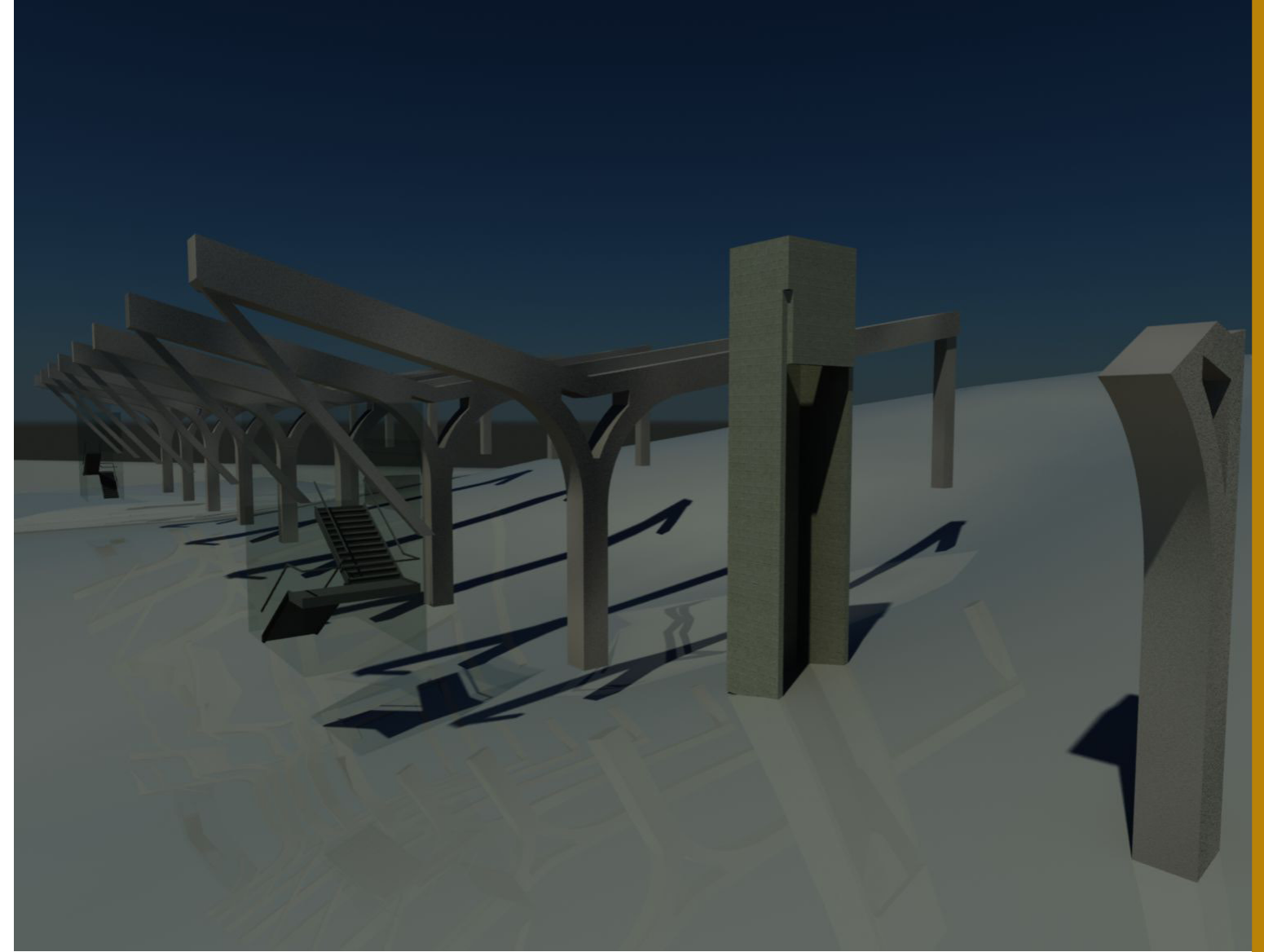
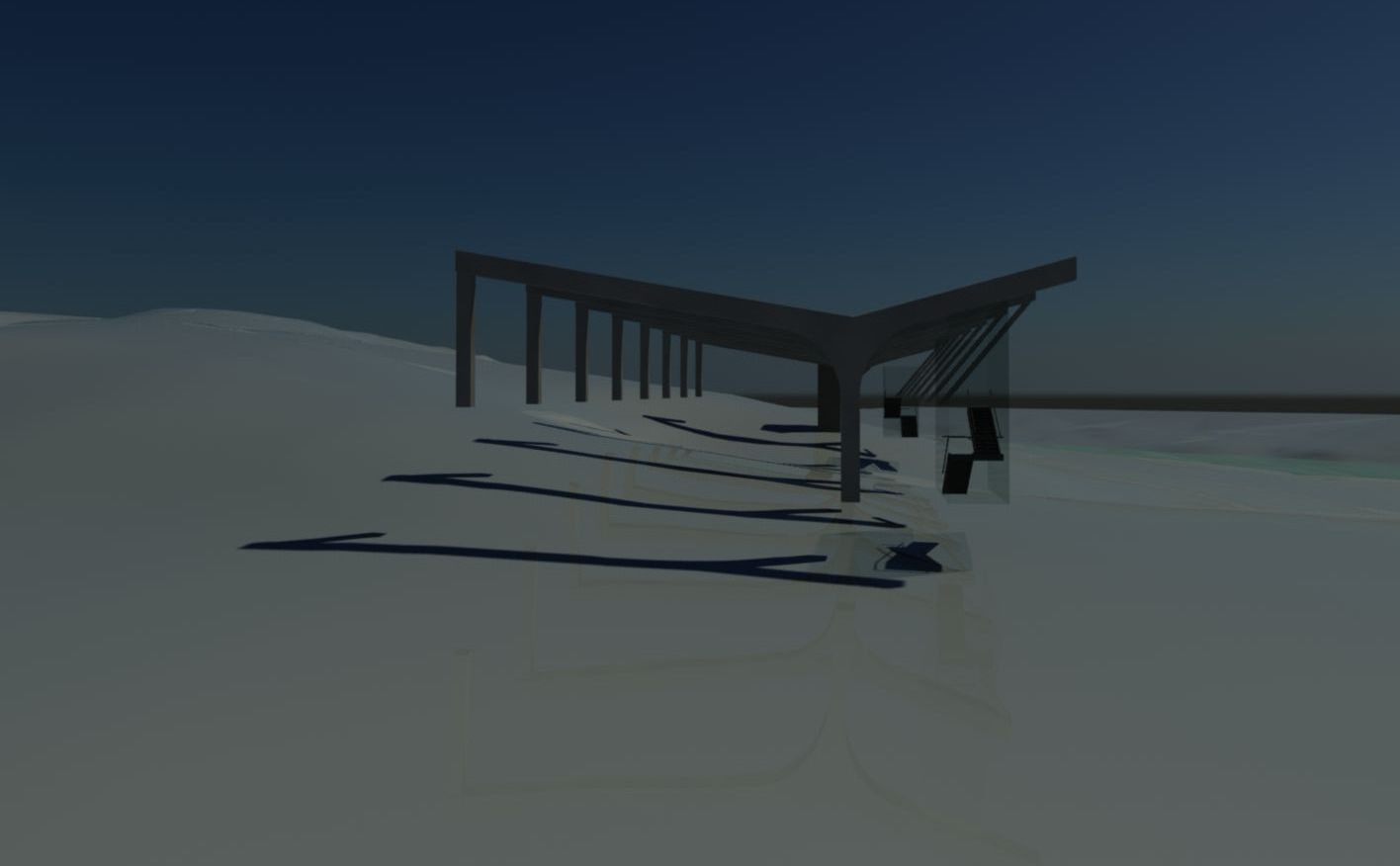
PROCESS





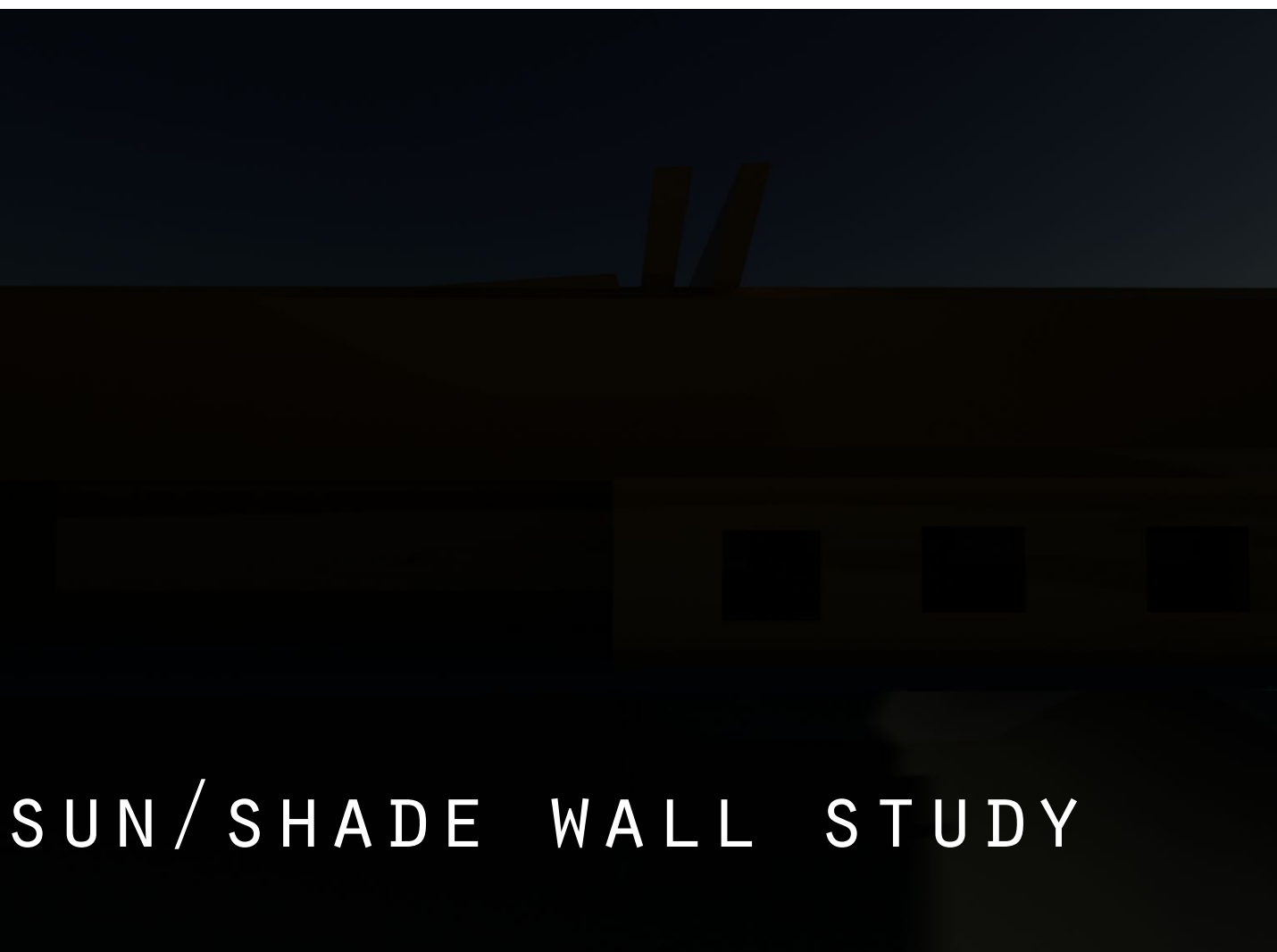
PROCESS





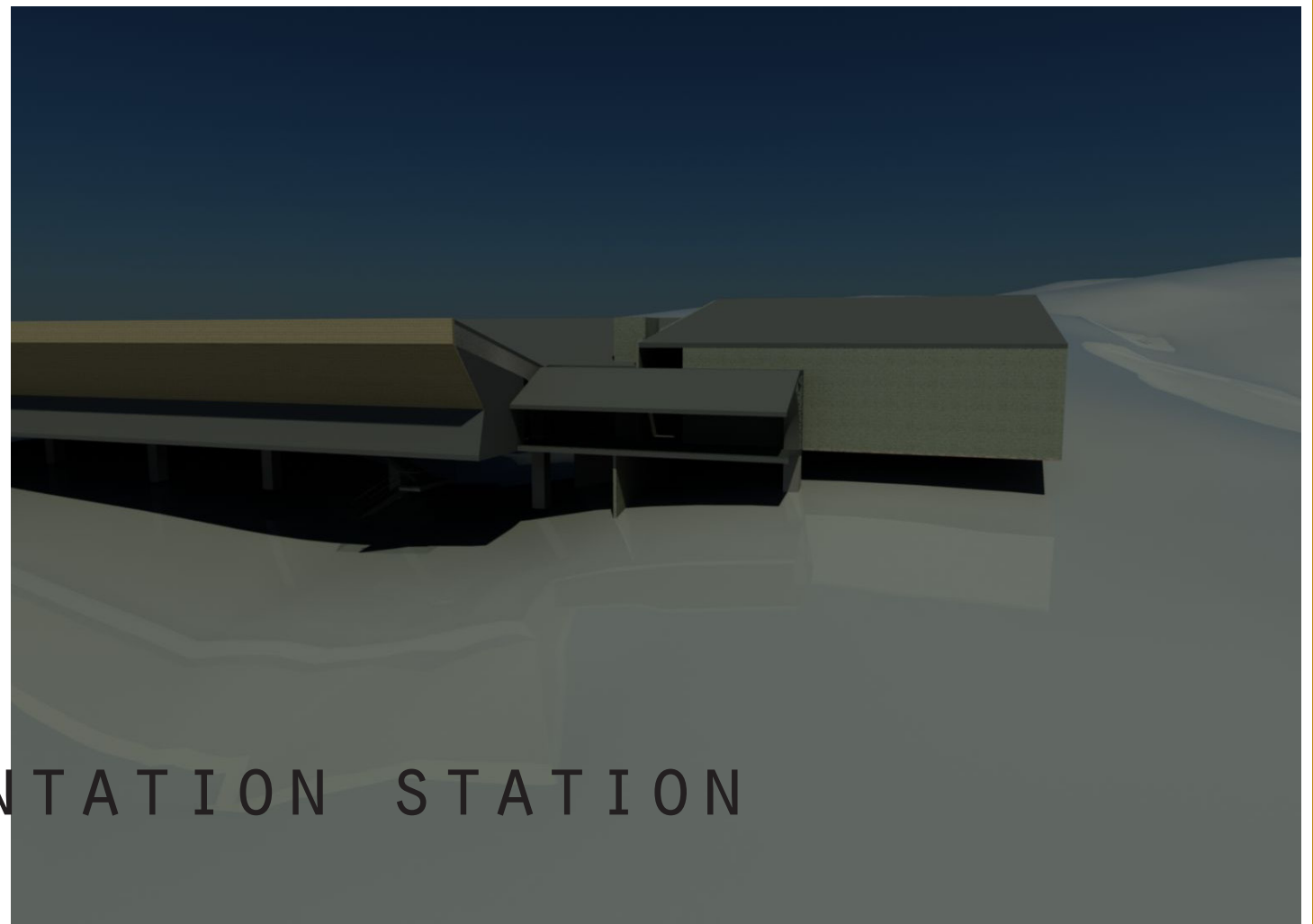
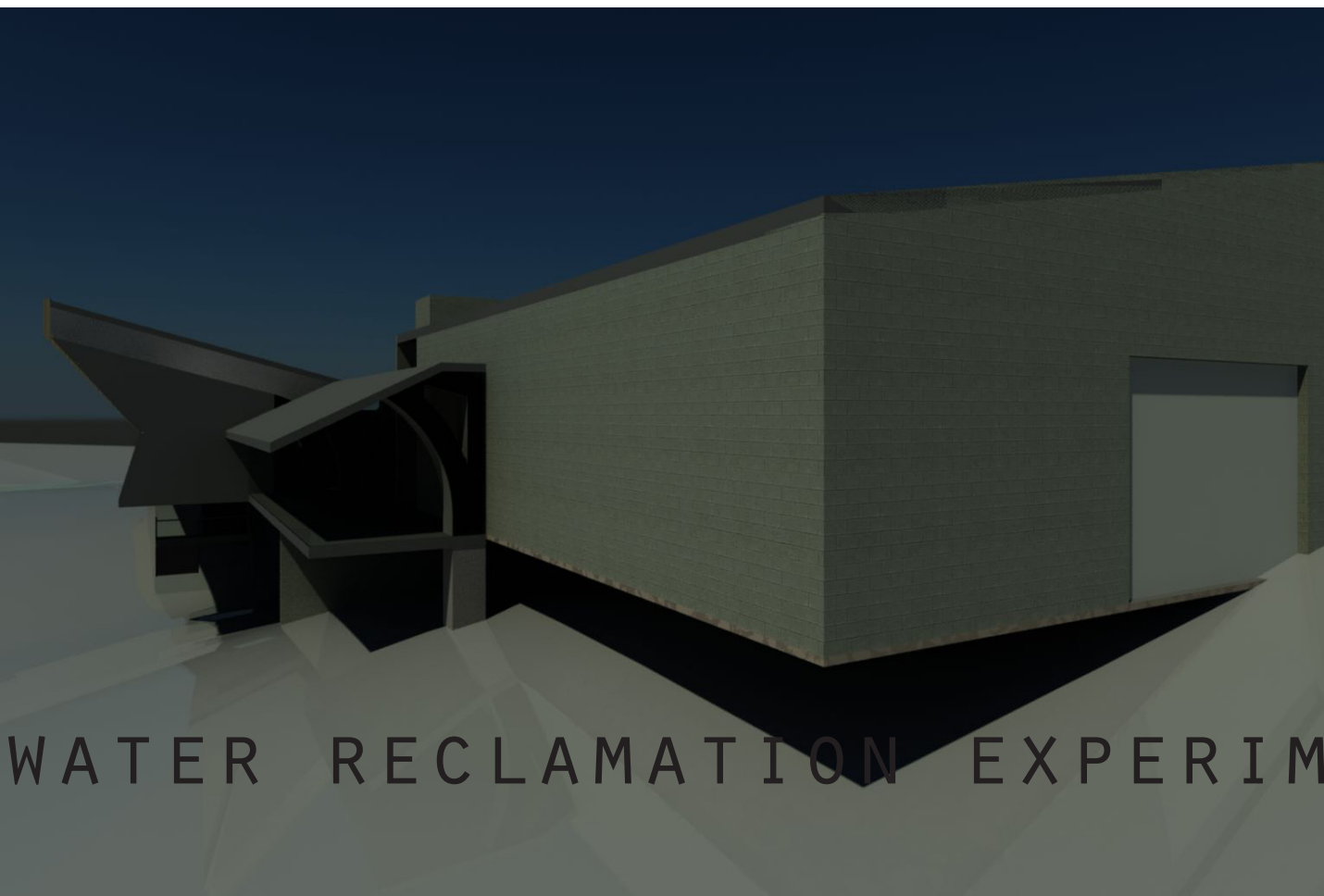
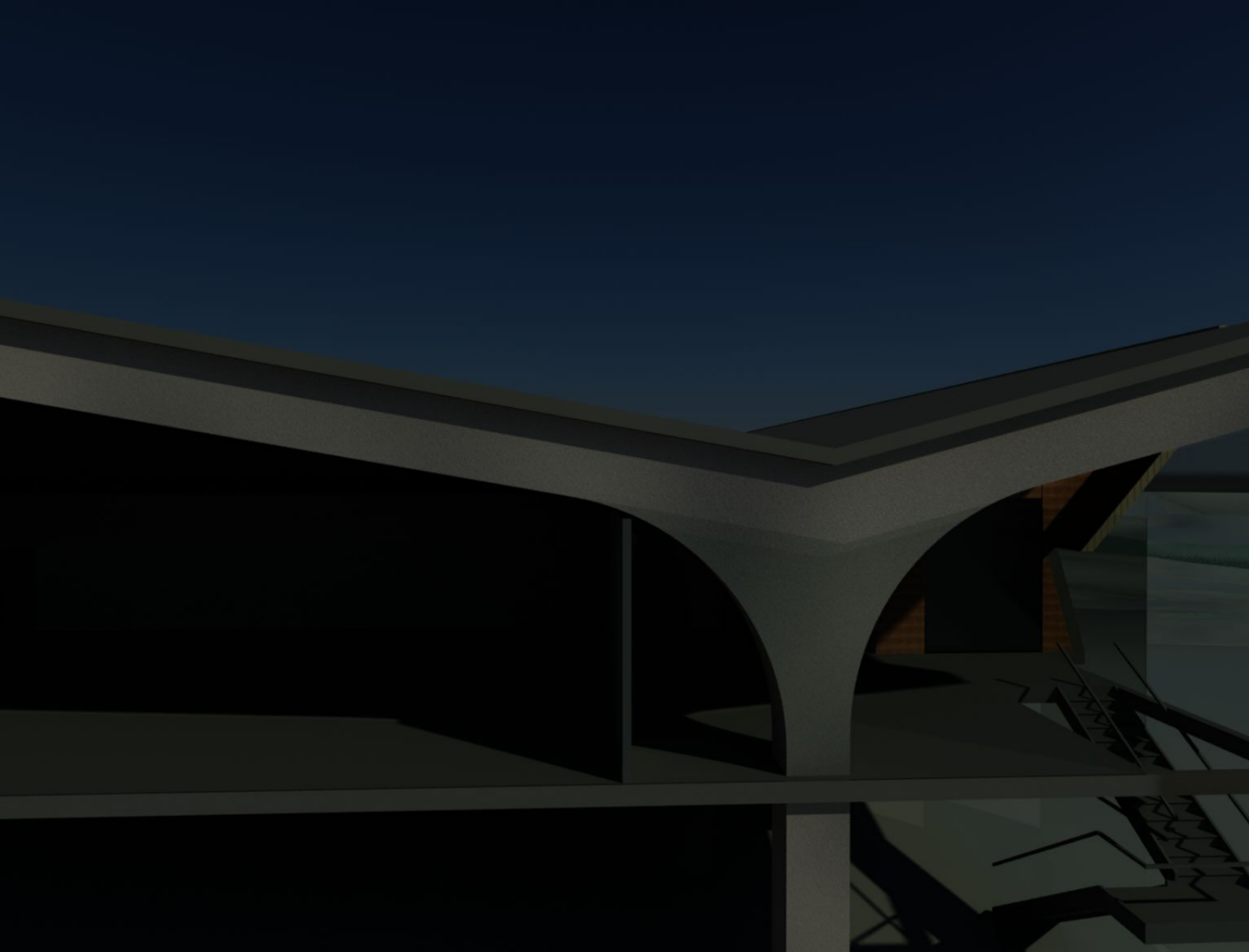
STRUCTURE



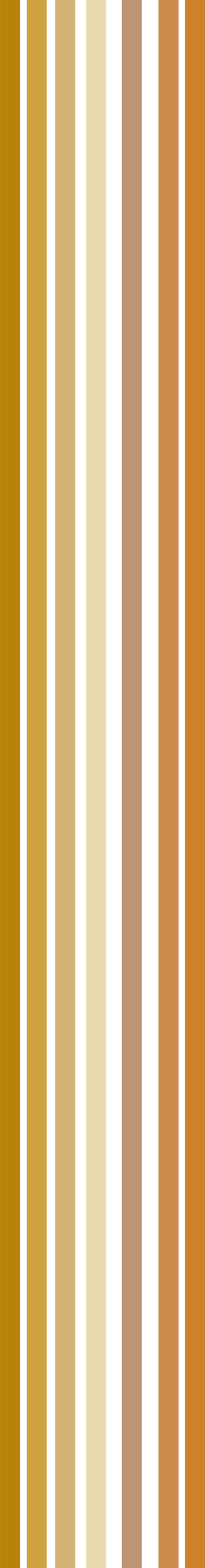


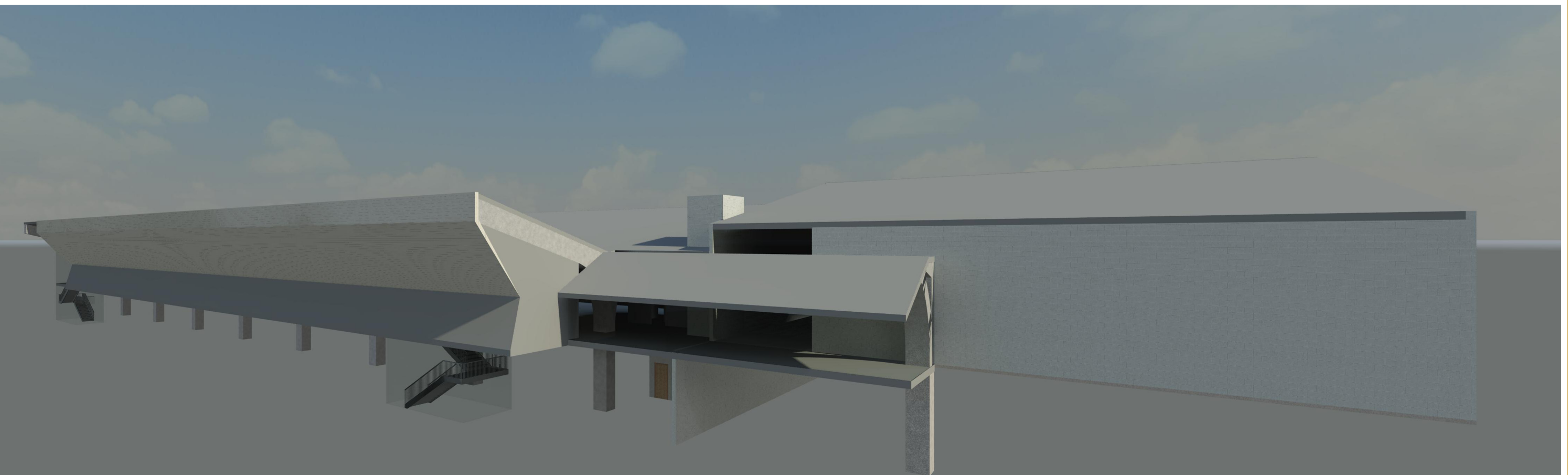
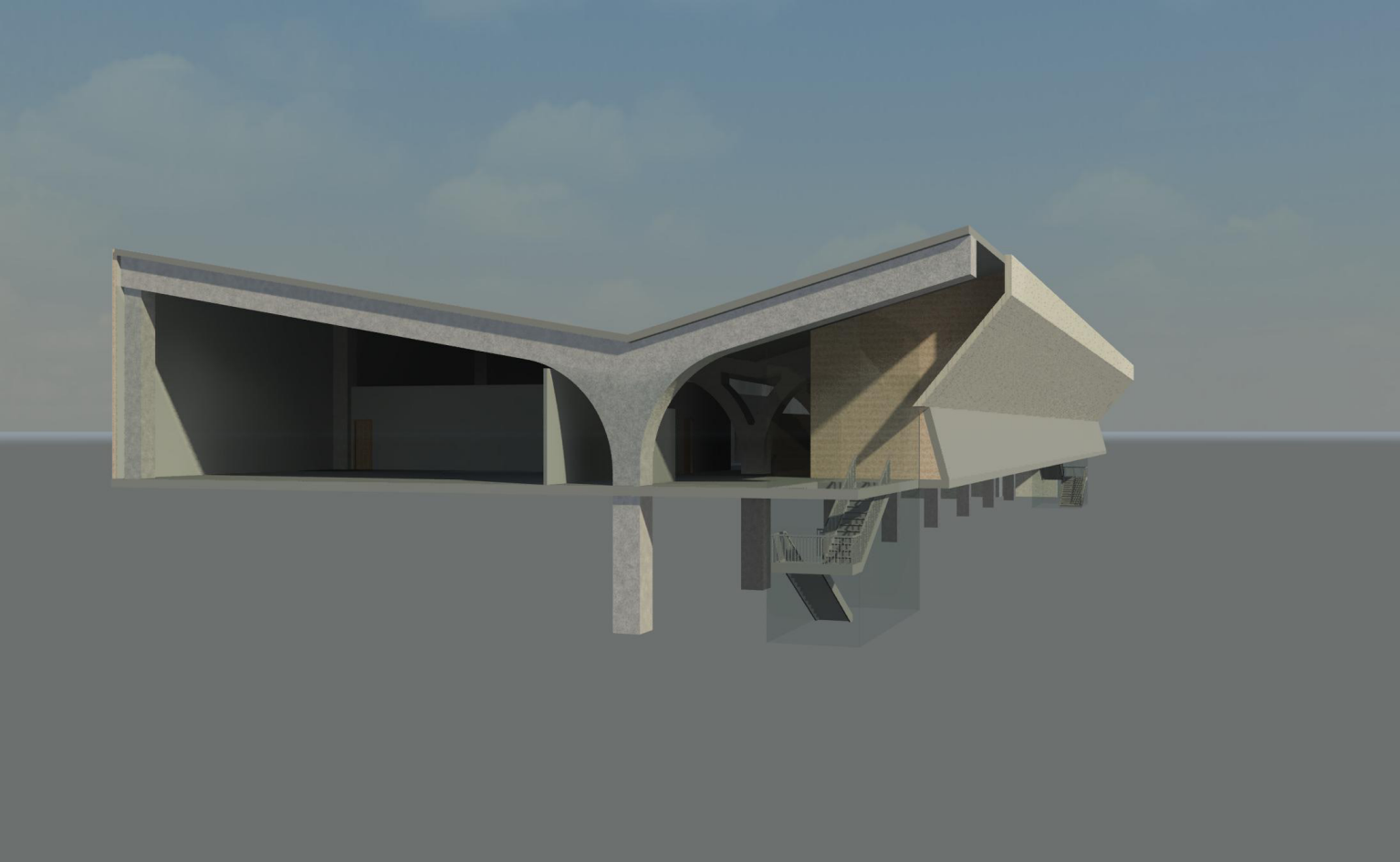
SUN / SHADE WALL STUDY



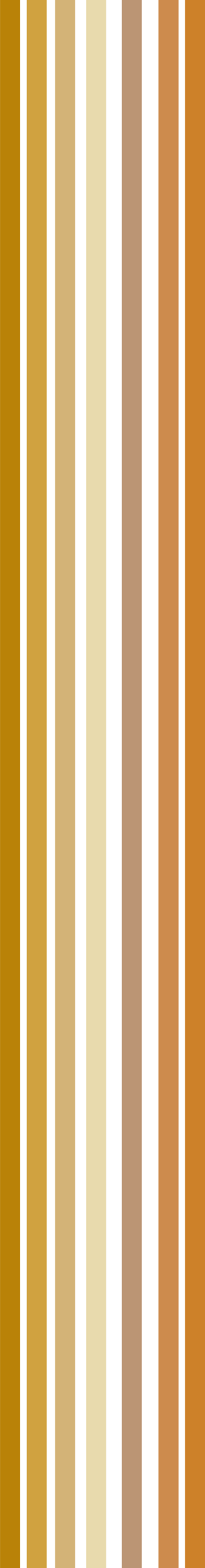


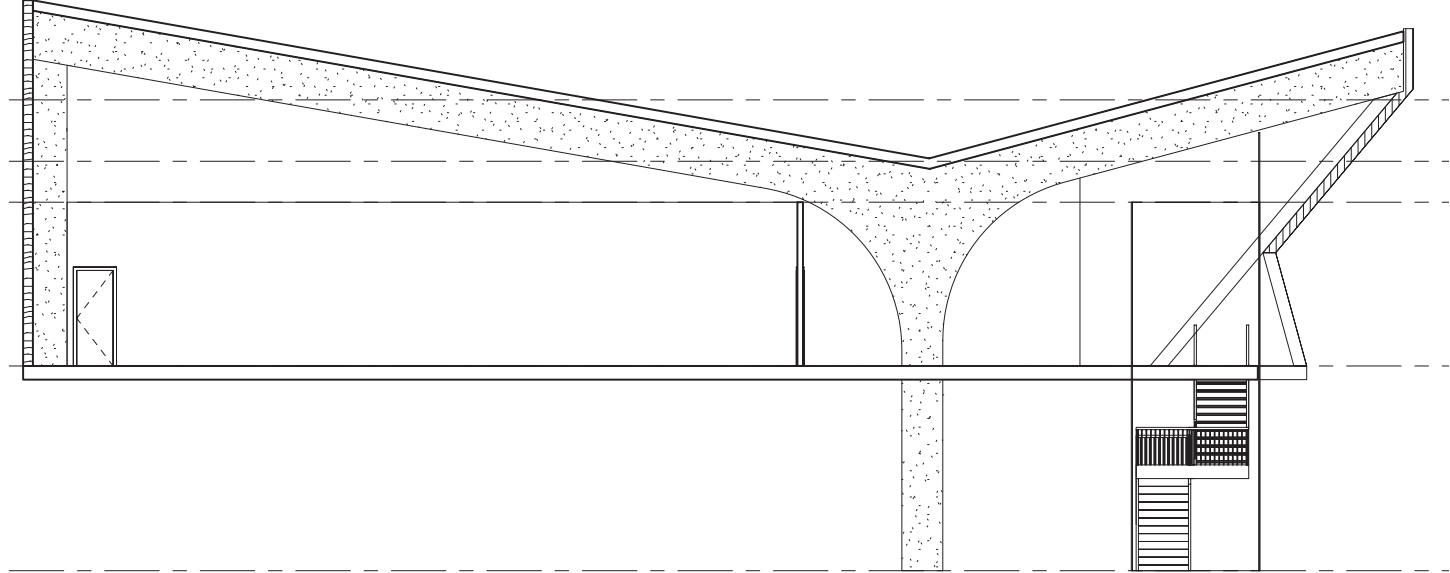
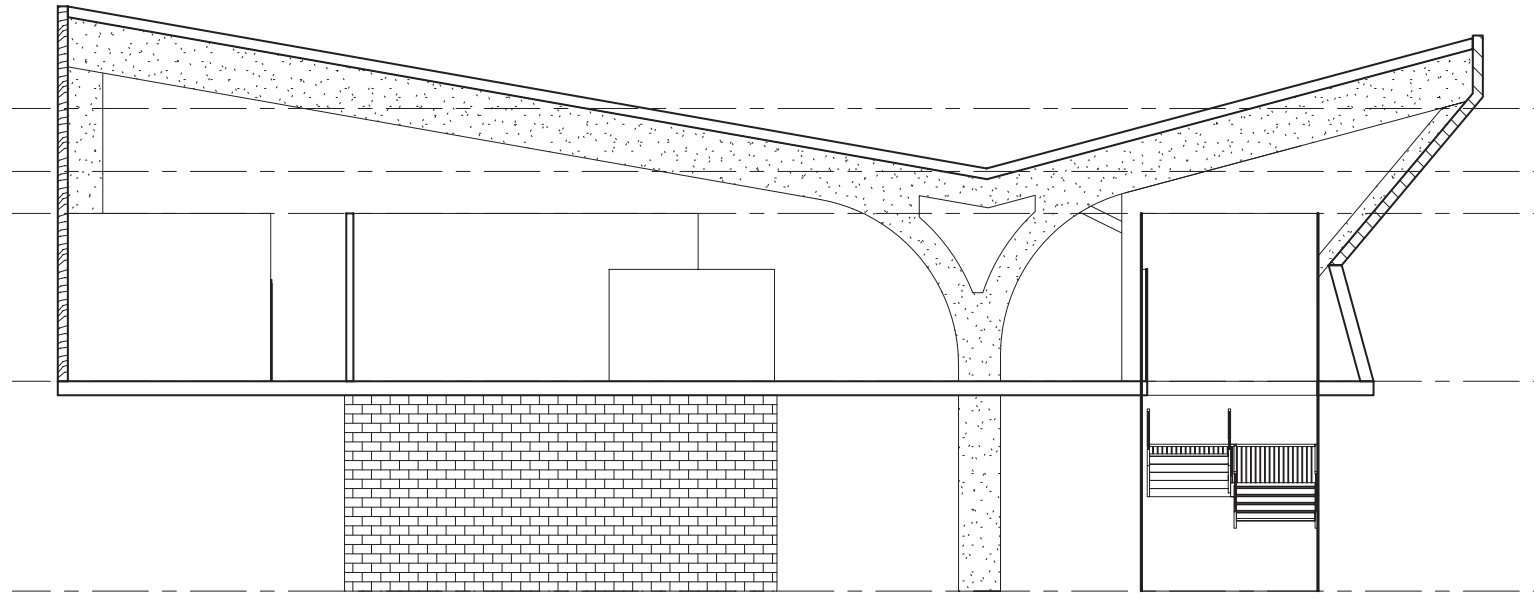
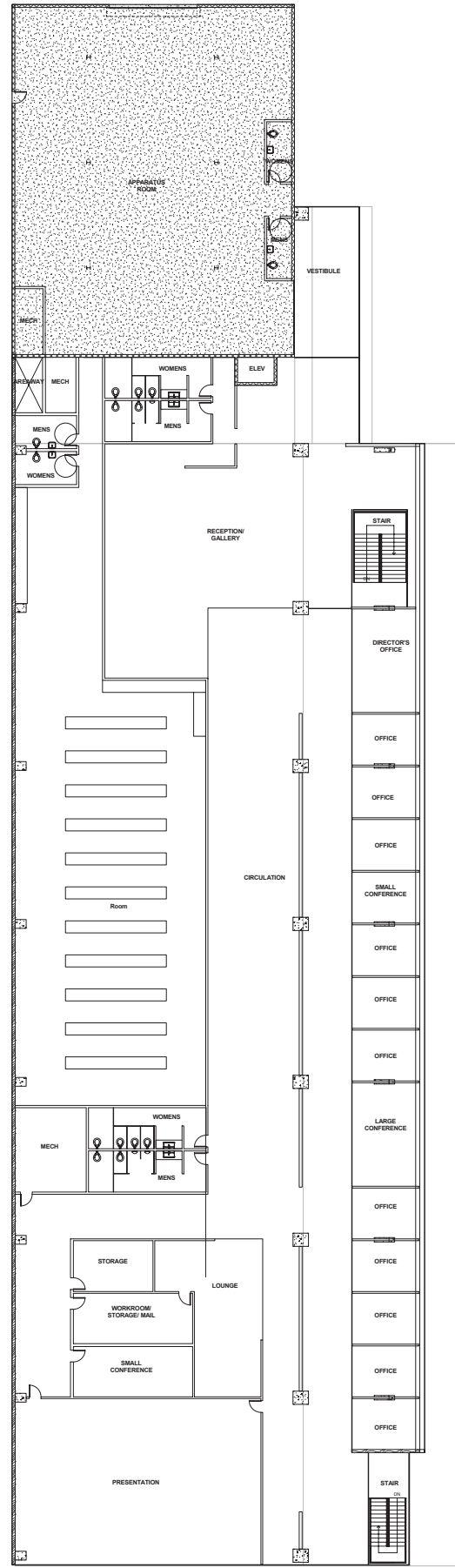
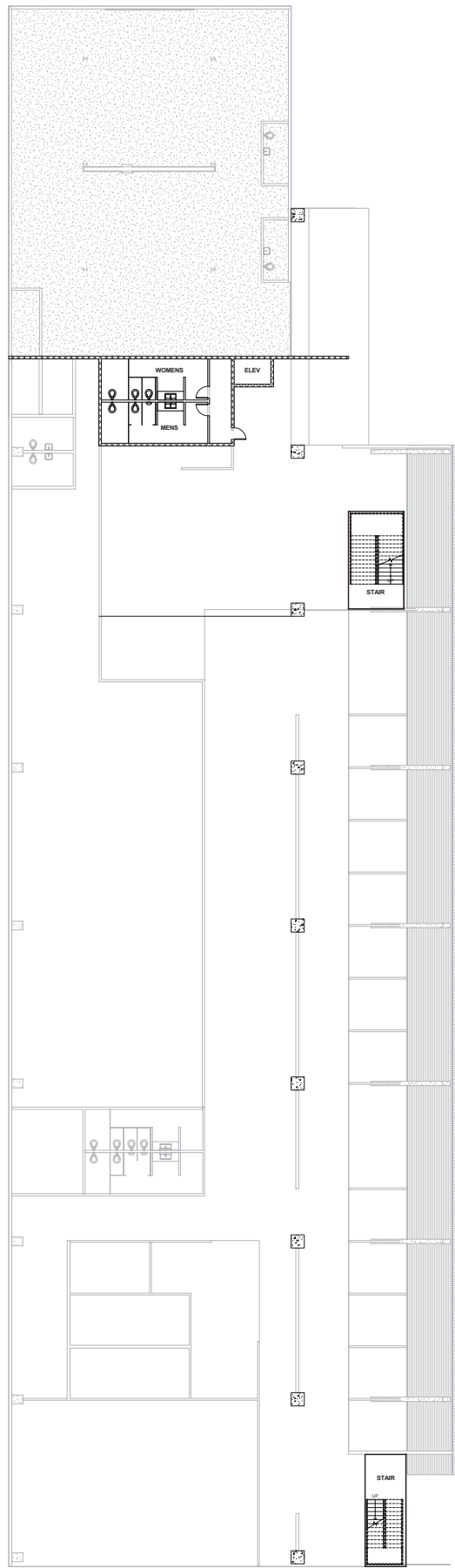
WATER RECLAMATION EXPERIMENTATION STATION



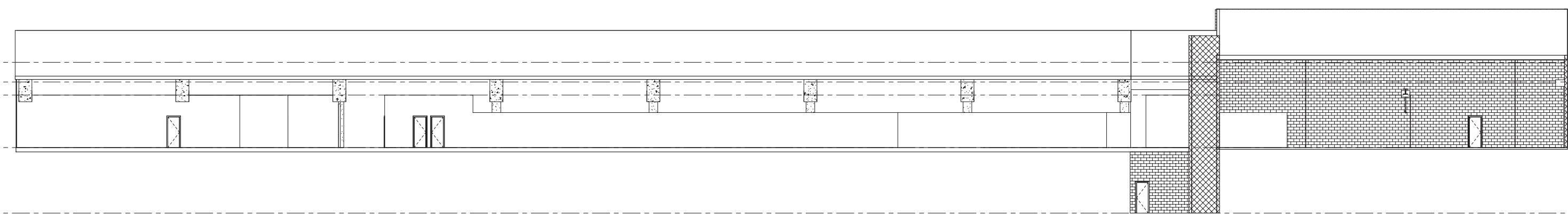
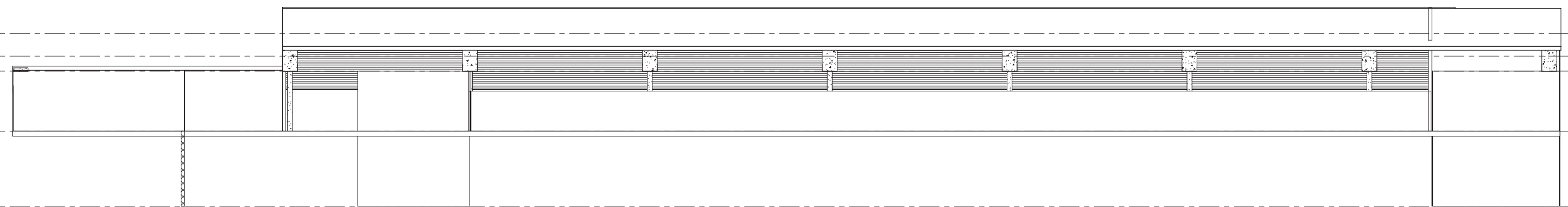


WATER RECLAMATION EXPERIMENTATION STATION - BUILDING



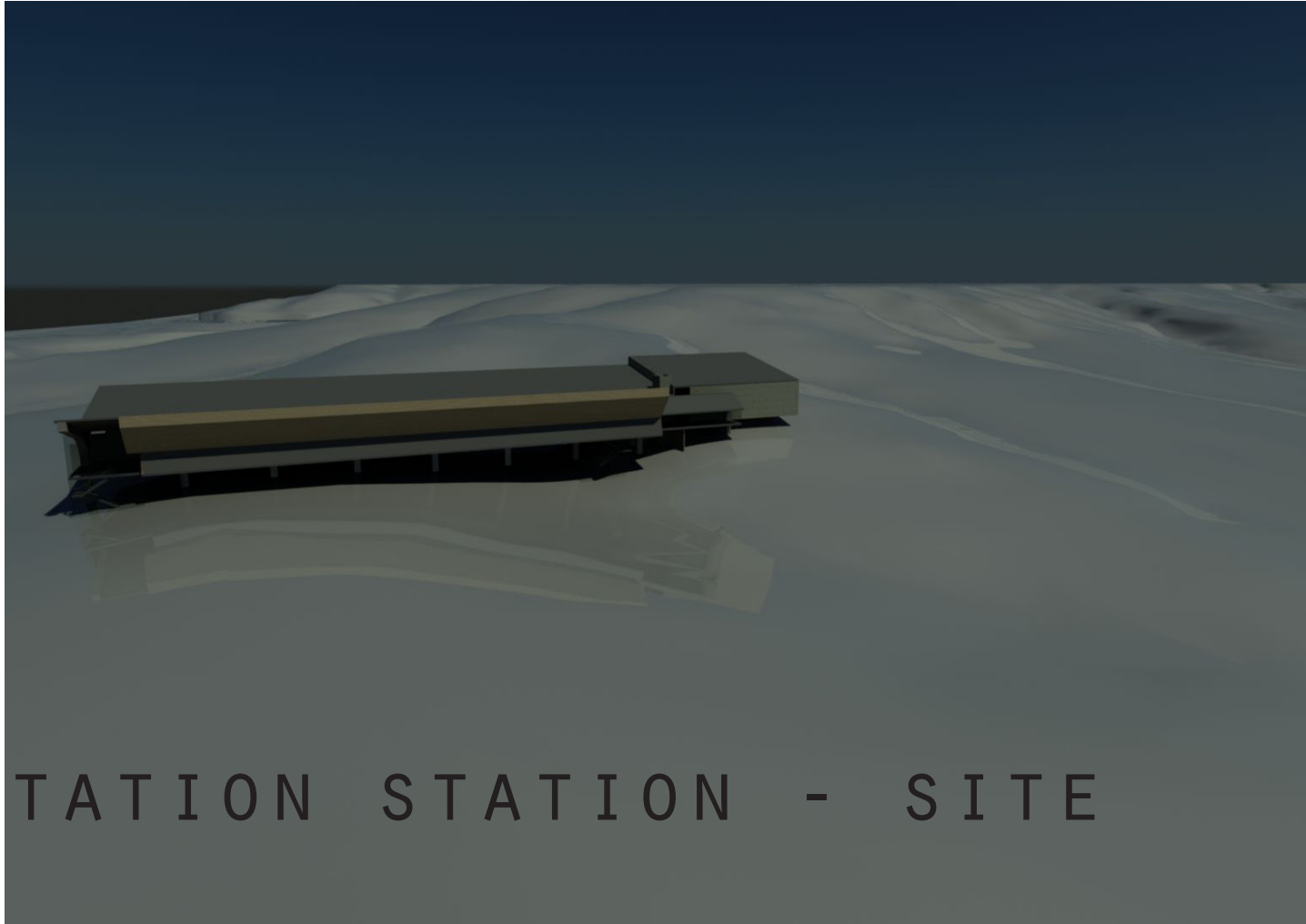
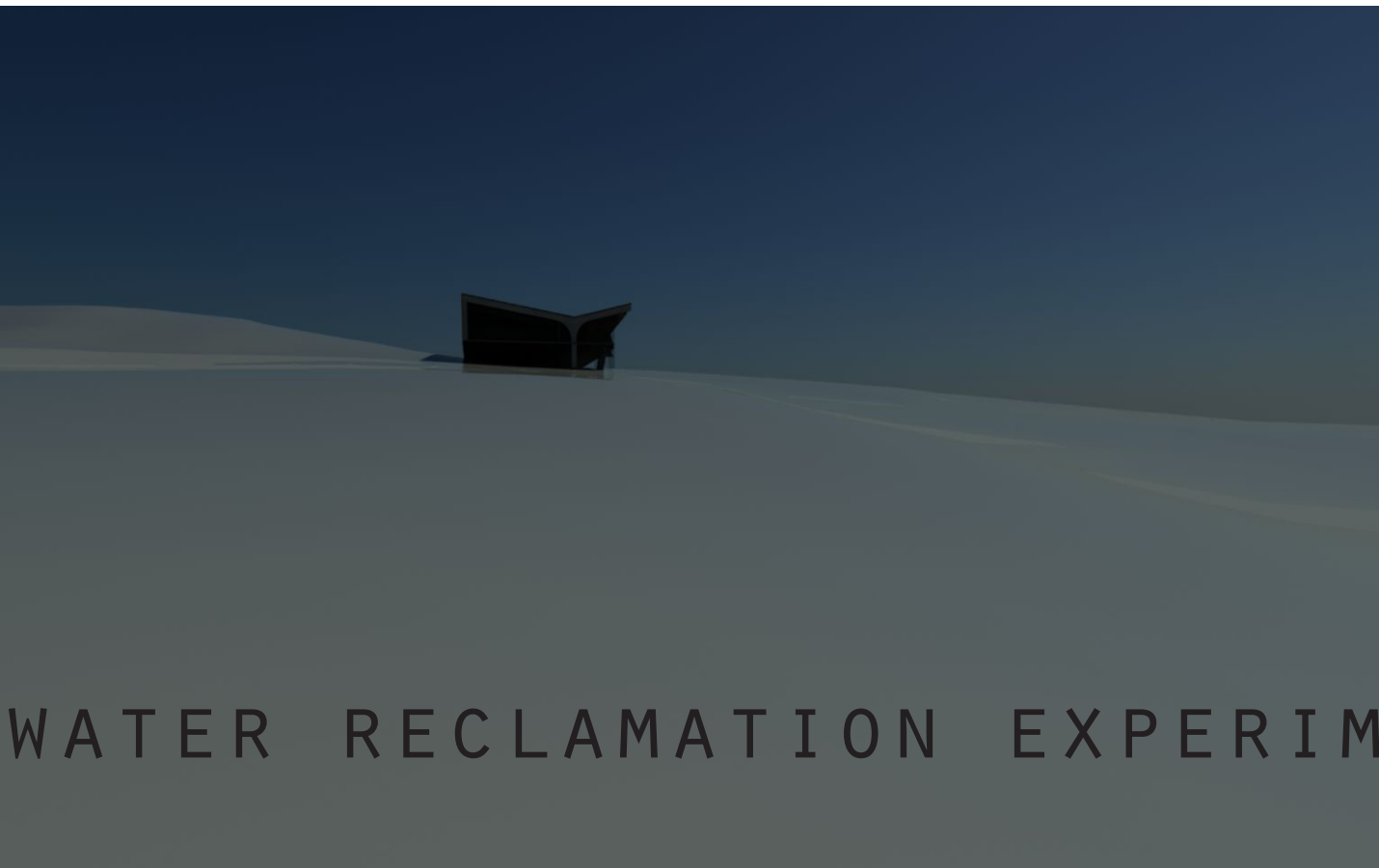
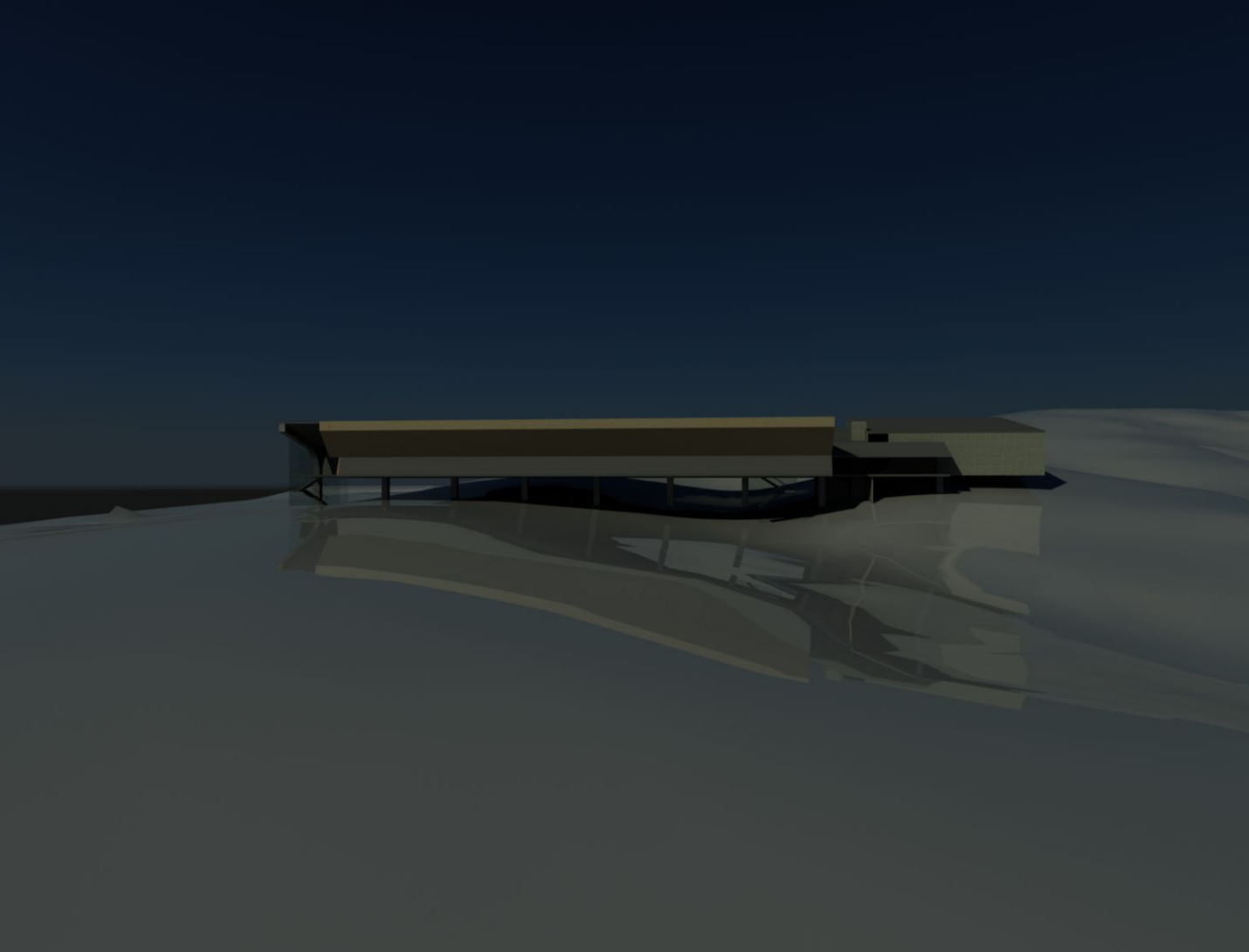


WATER RECLAMATION EXPERIMENTATION STATION - BUILDING



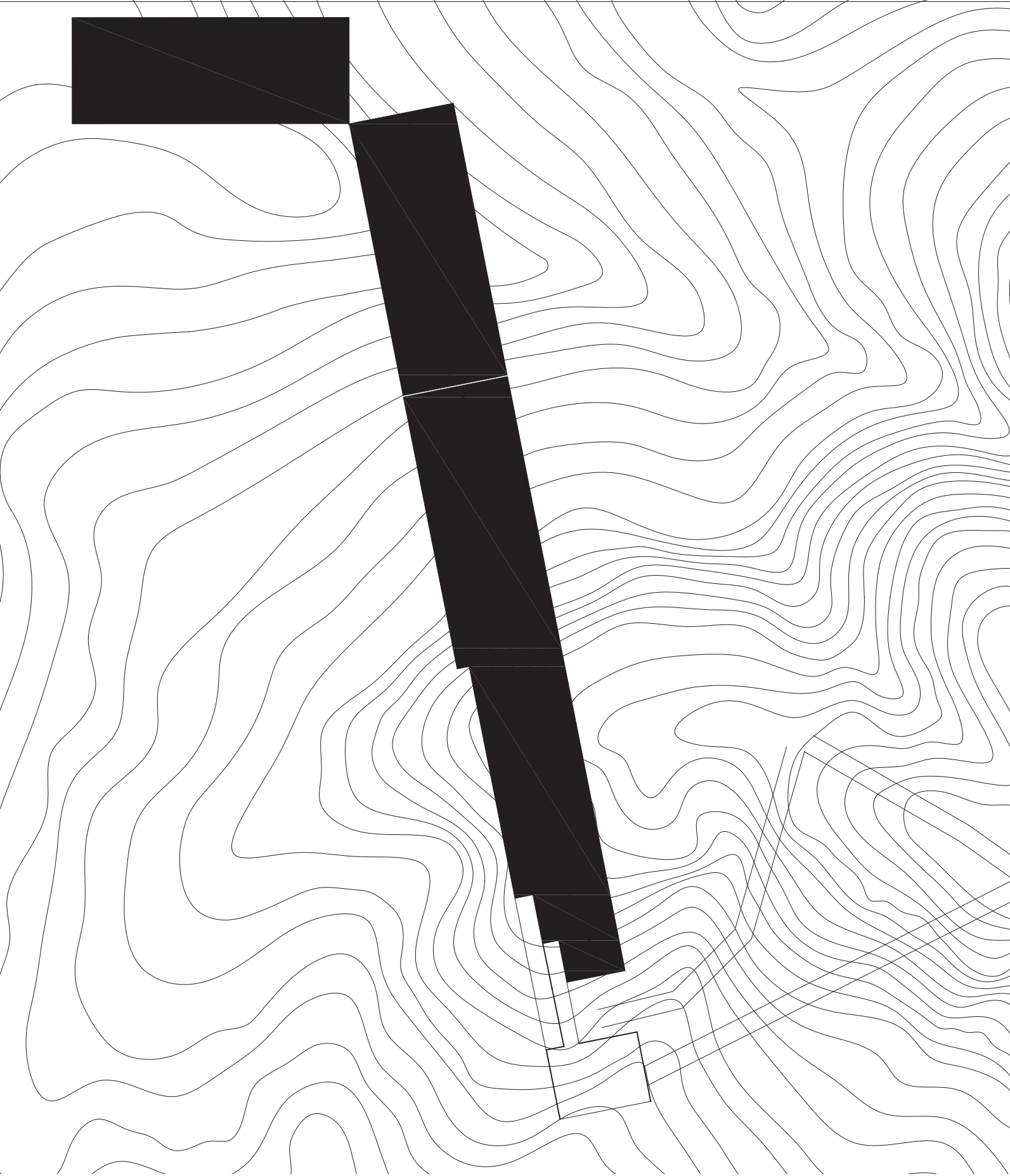
WATER RECLAMATION EXPERIMENTATION STATION - BUILDING



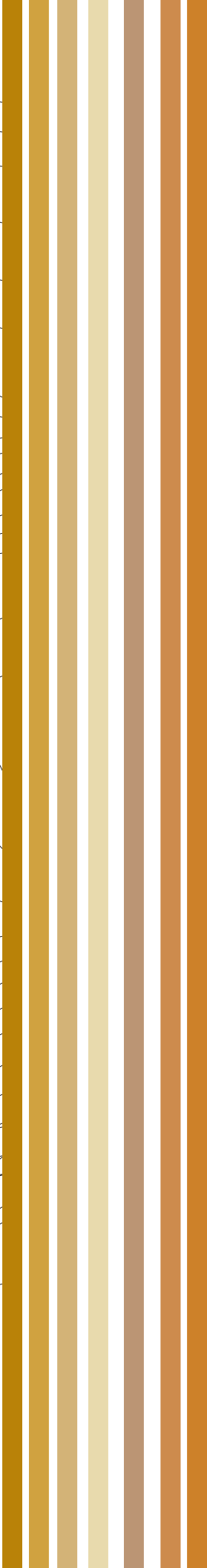


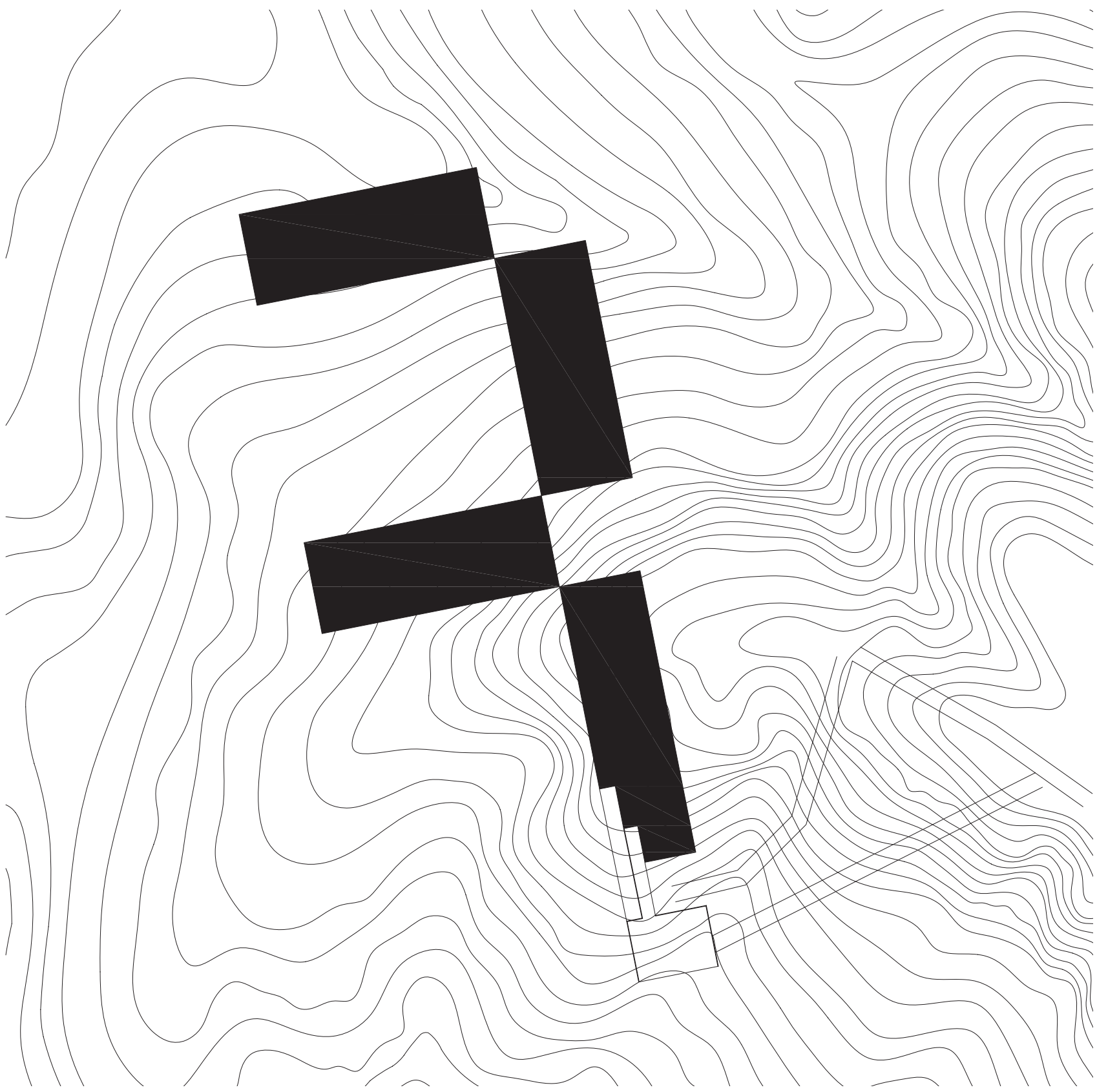
WATER RECLAMATION EXPERIMENTATION STATION - SITE



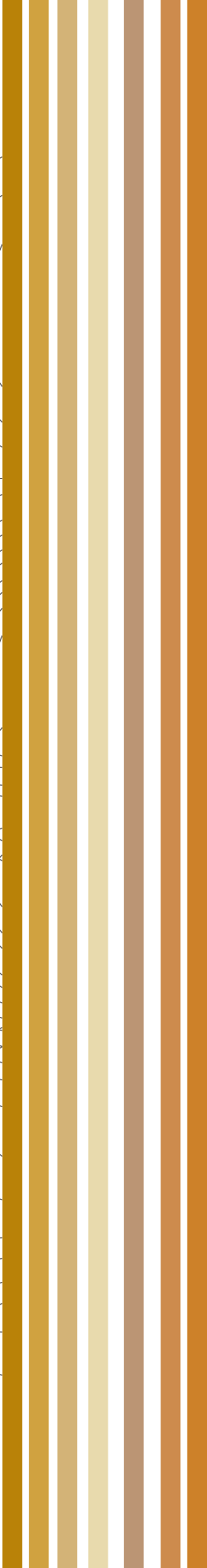


WATER RECLAMATION EXPERIMENTATION STATION - SITE





WATER RECLAMATION EXPERIMENTATION STATION - SITE





WATER RECLAMATION EXPERIMENTATION STATION - SITE