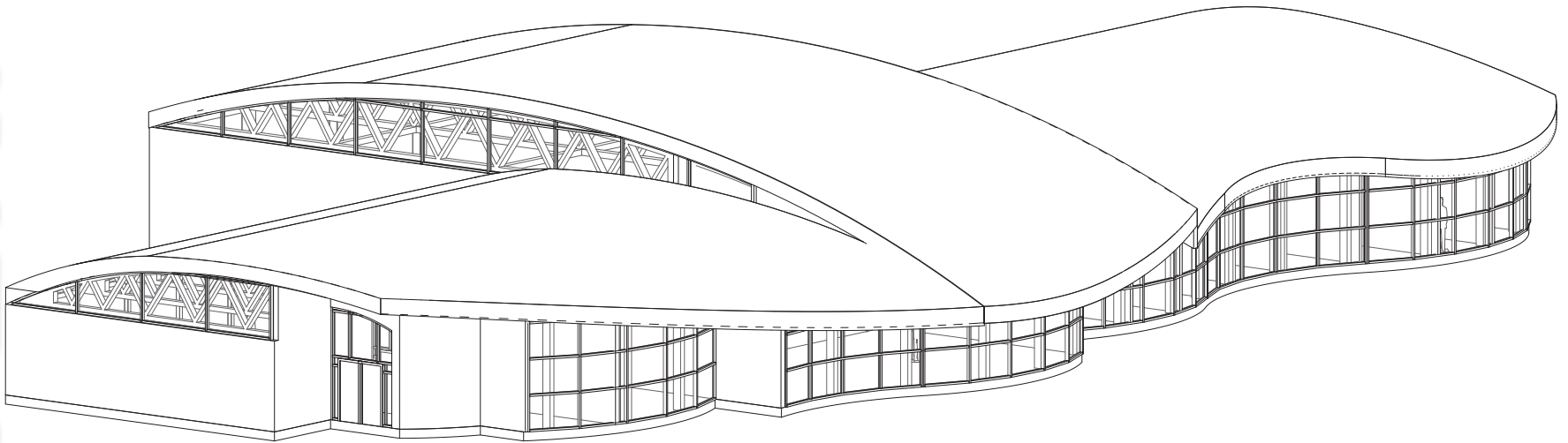


# WATER RESOURCE EXPERIMENT STATION

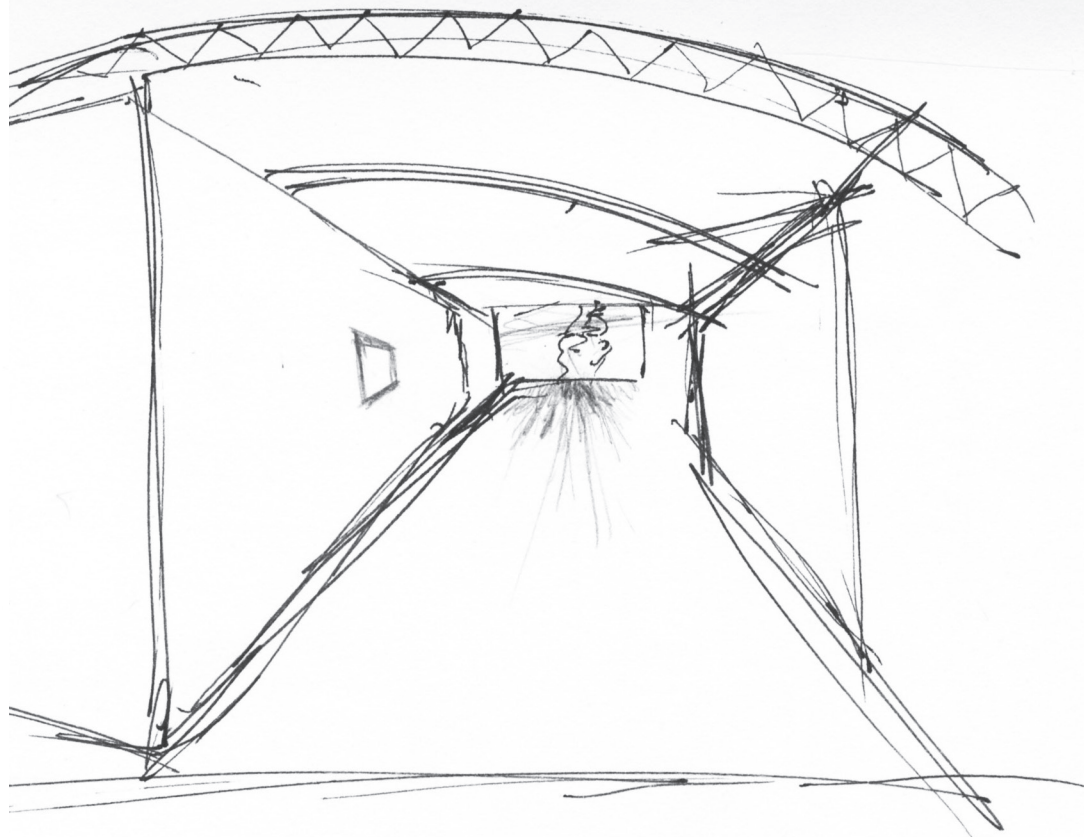
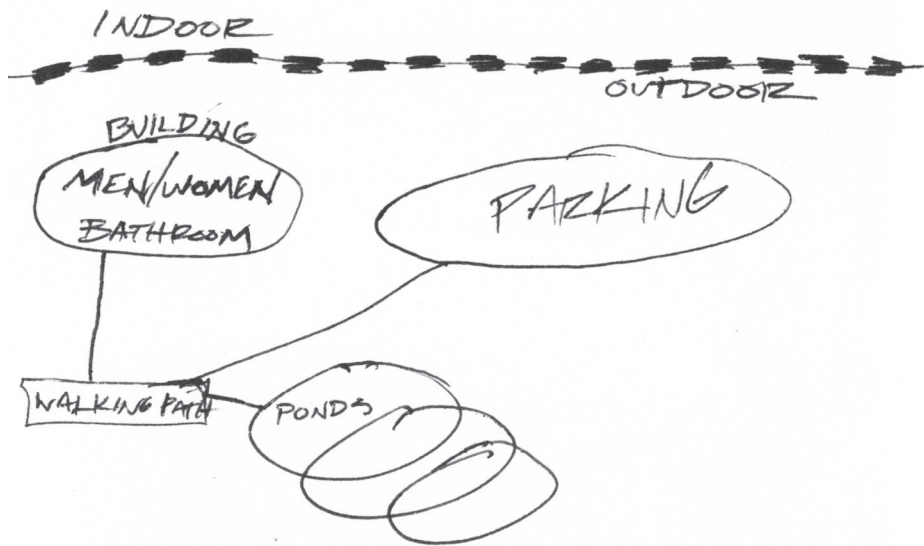
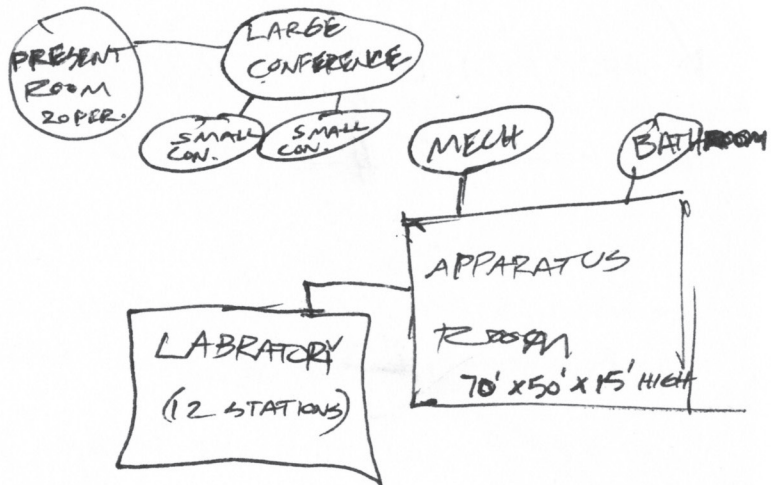
**MIDTERM**



**INSPIRATION**

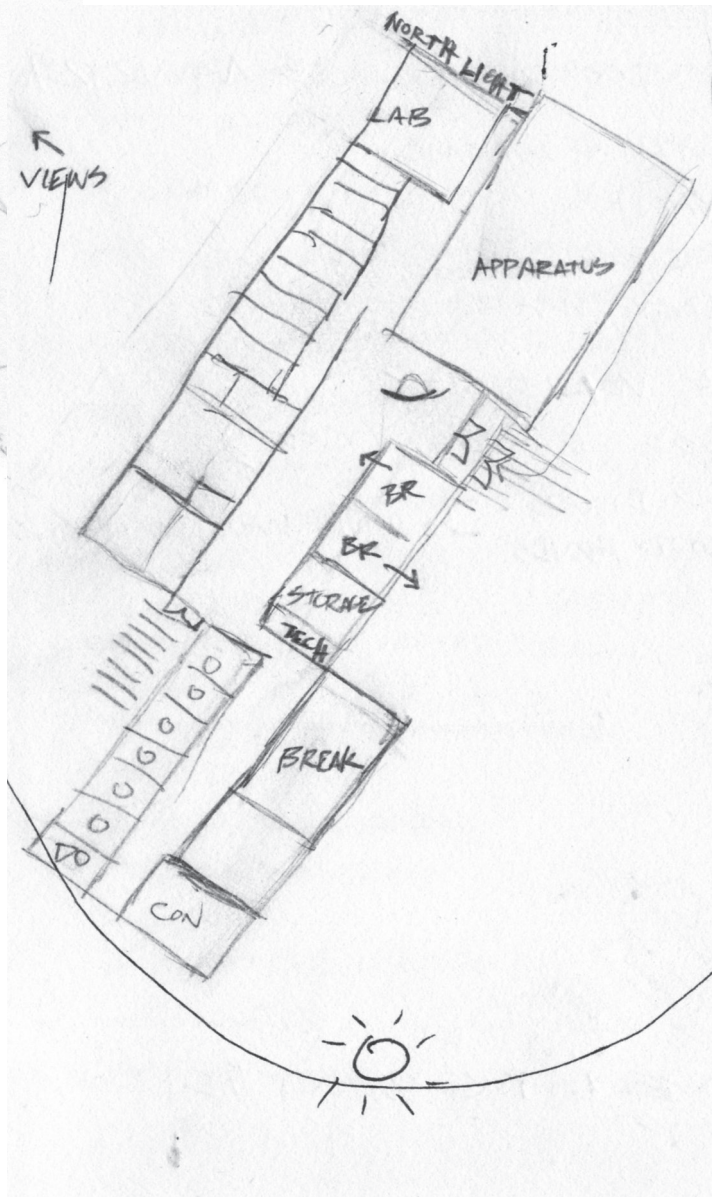
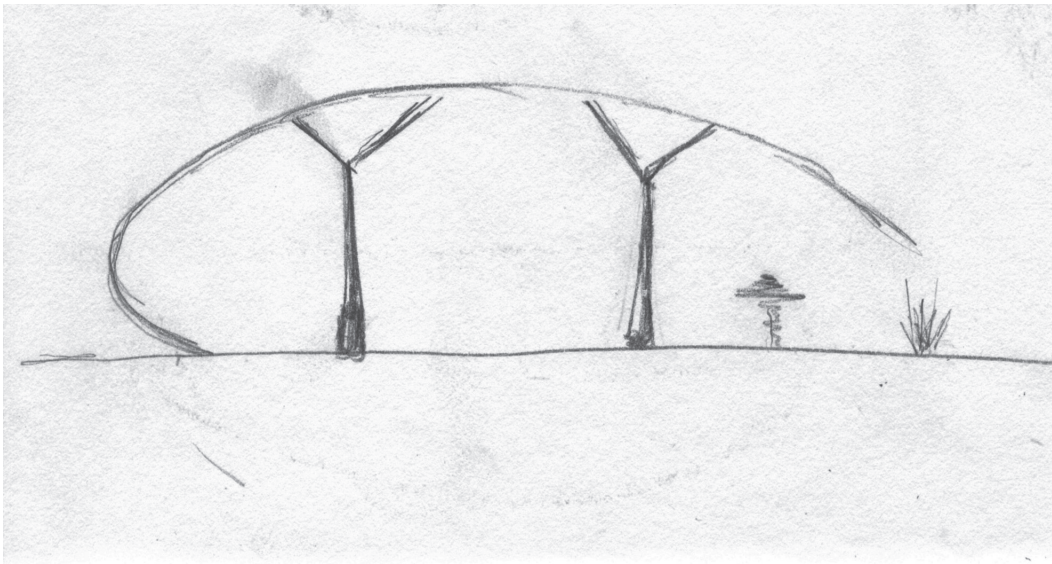
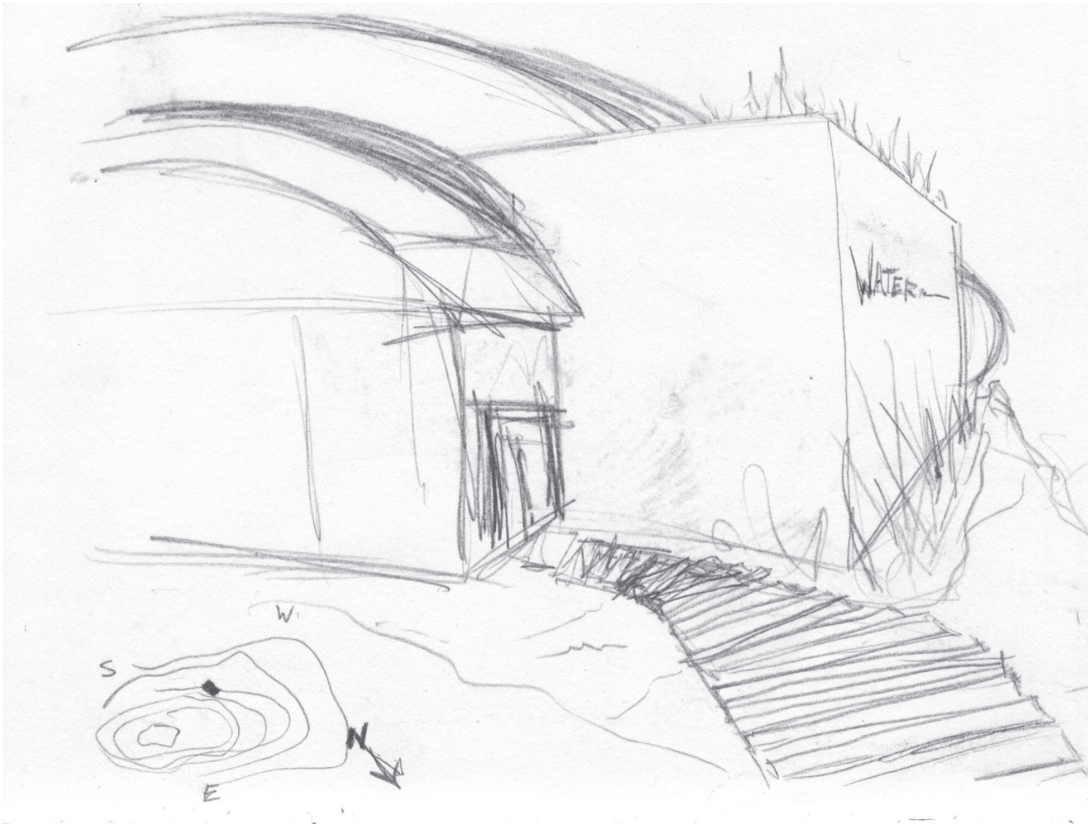




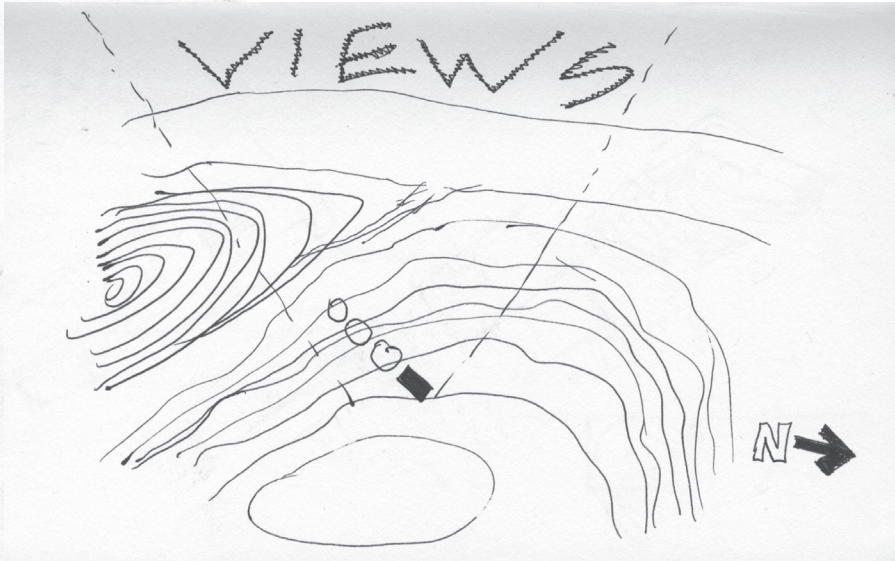
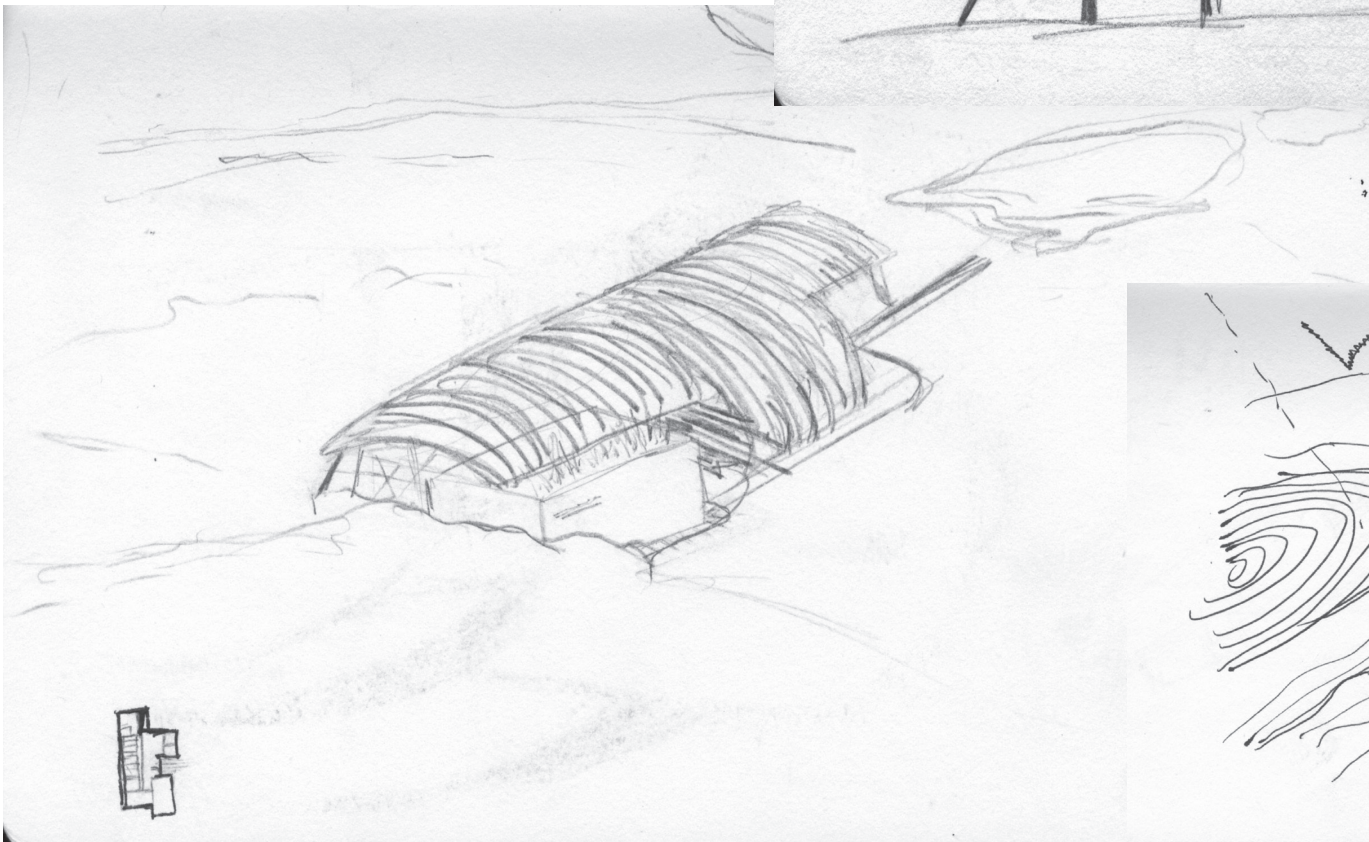
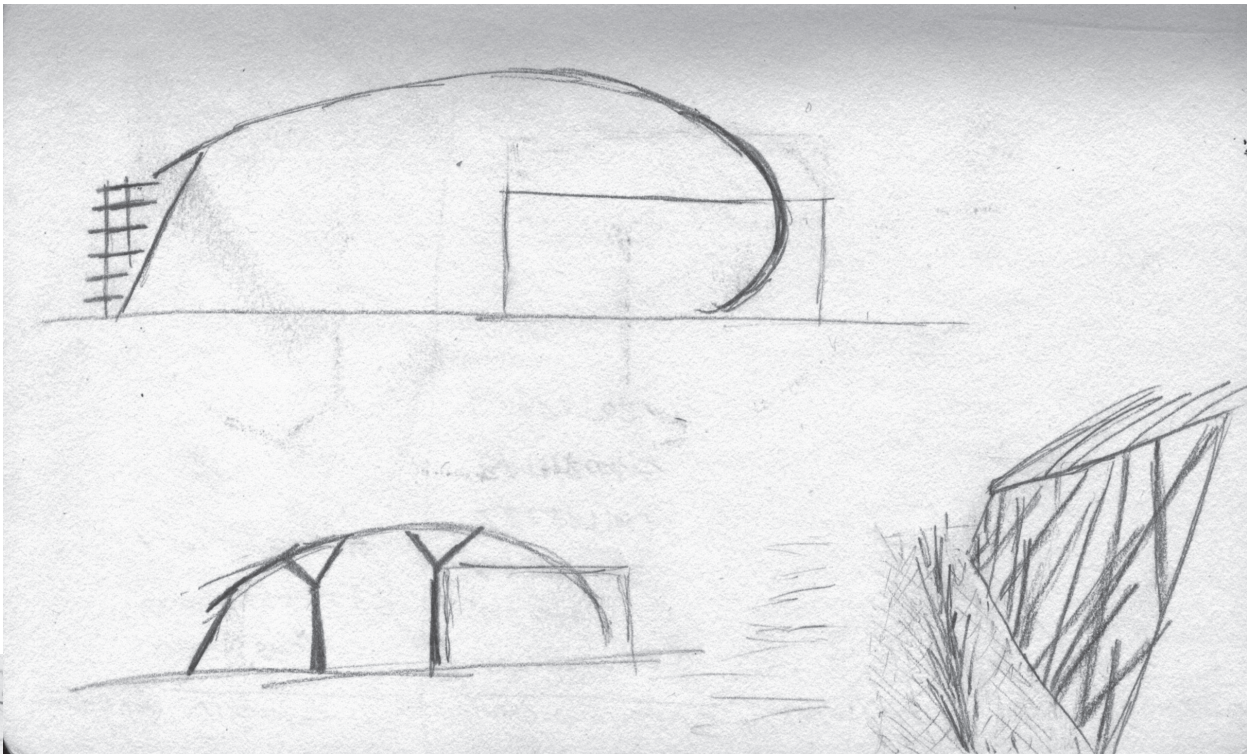




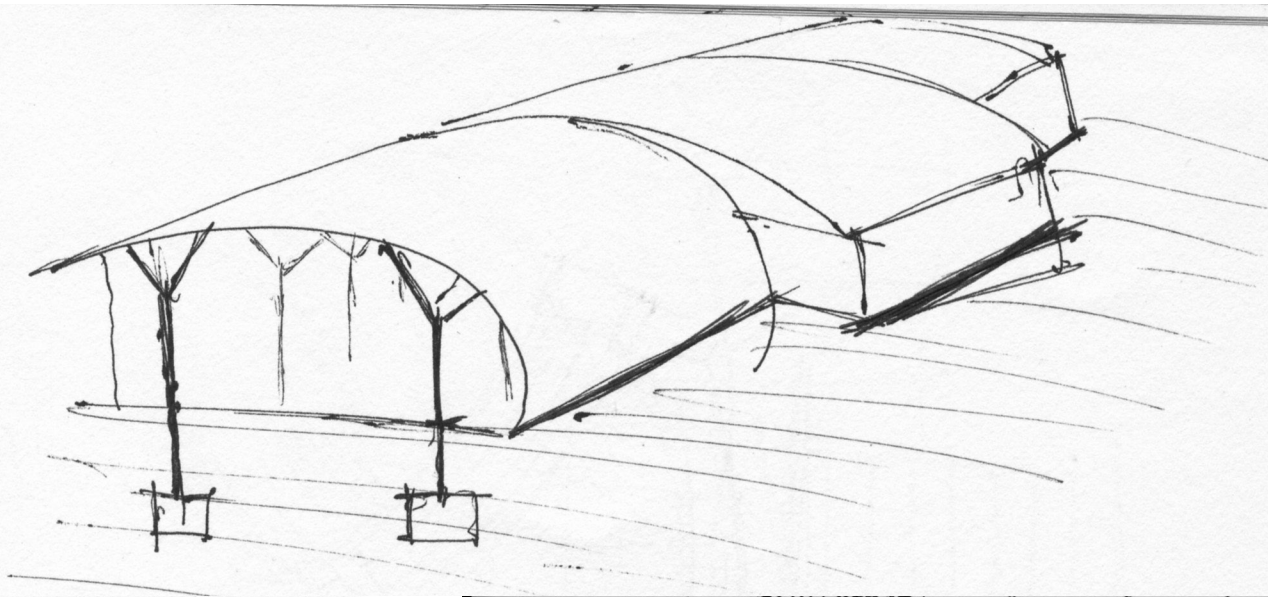
# SKETCHES



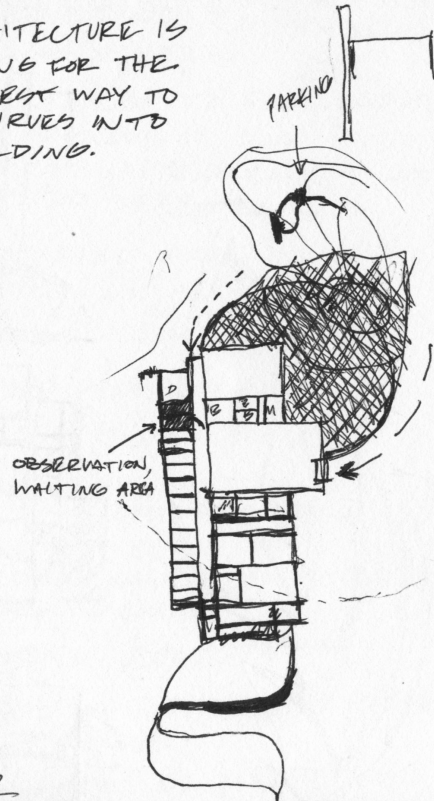




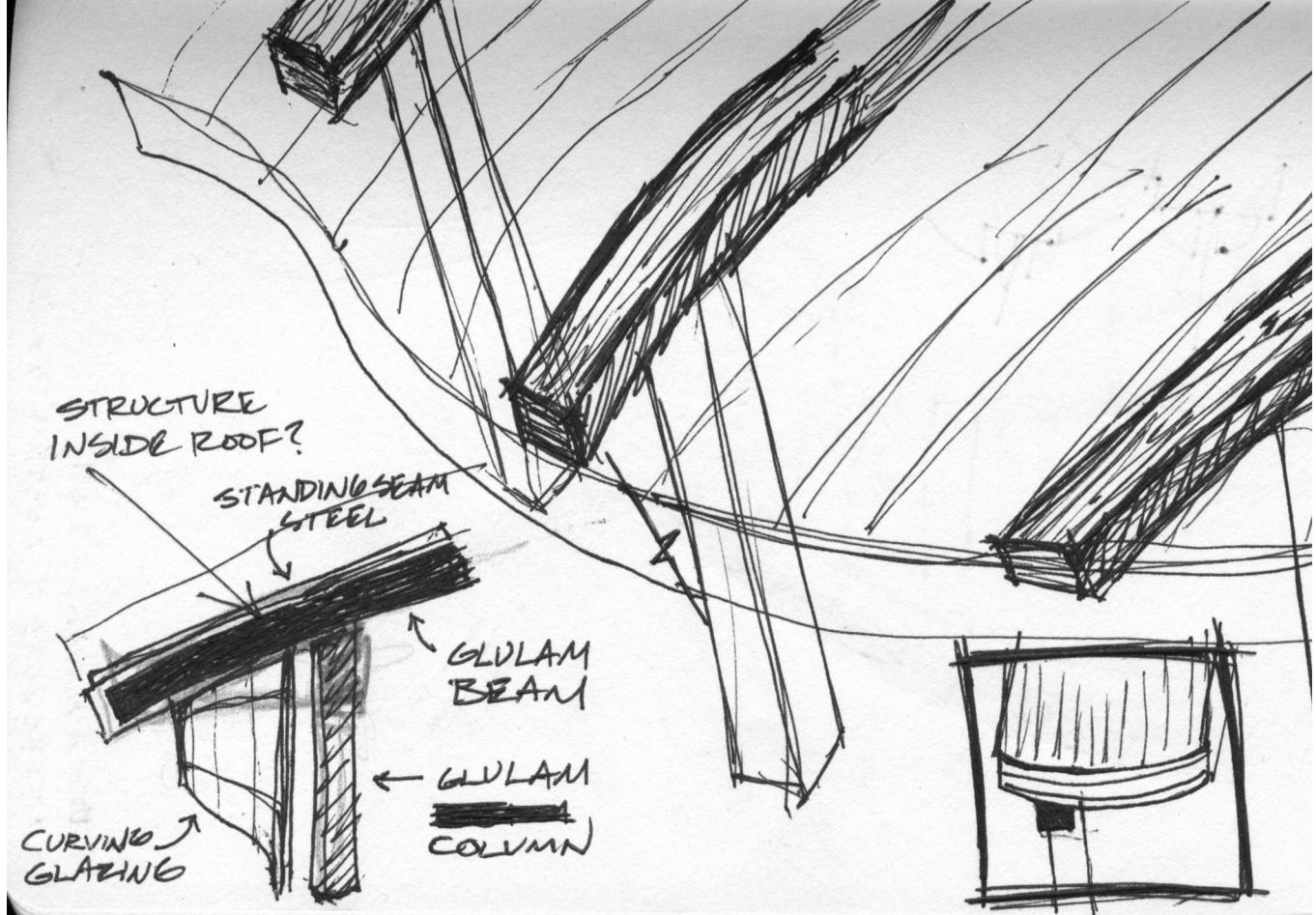




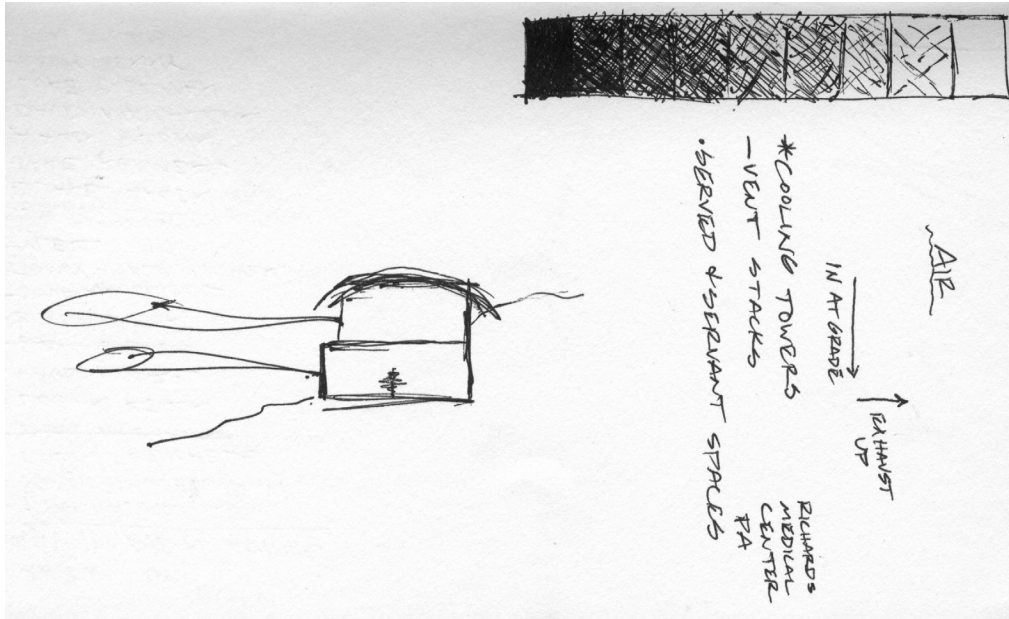
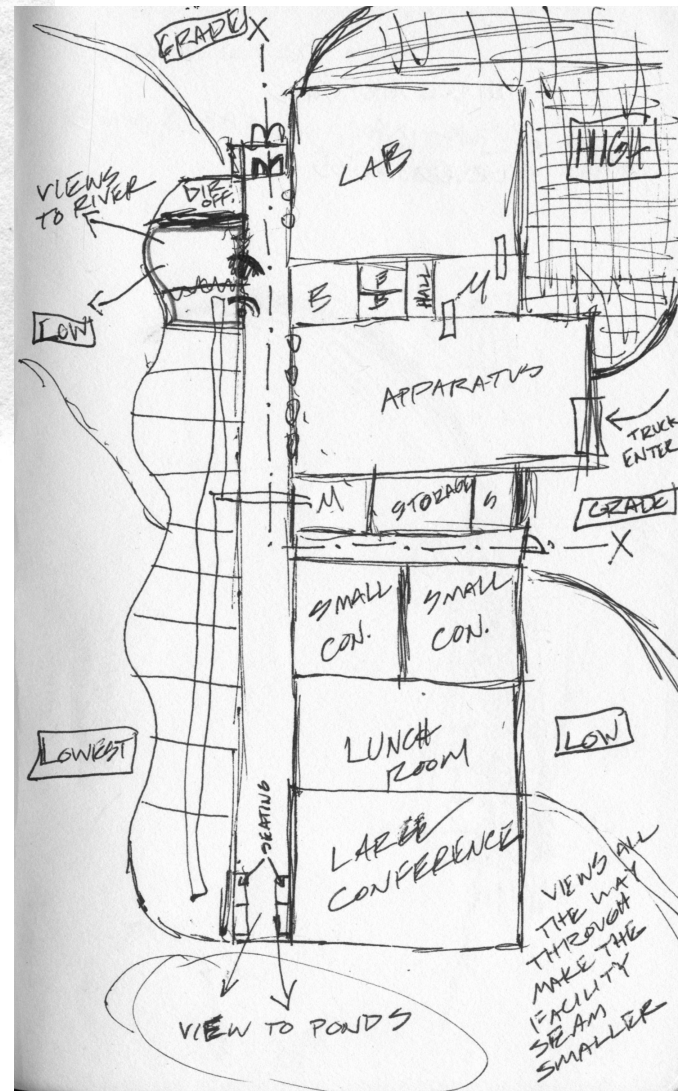
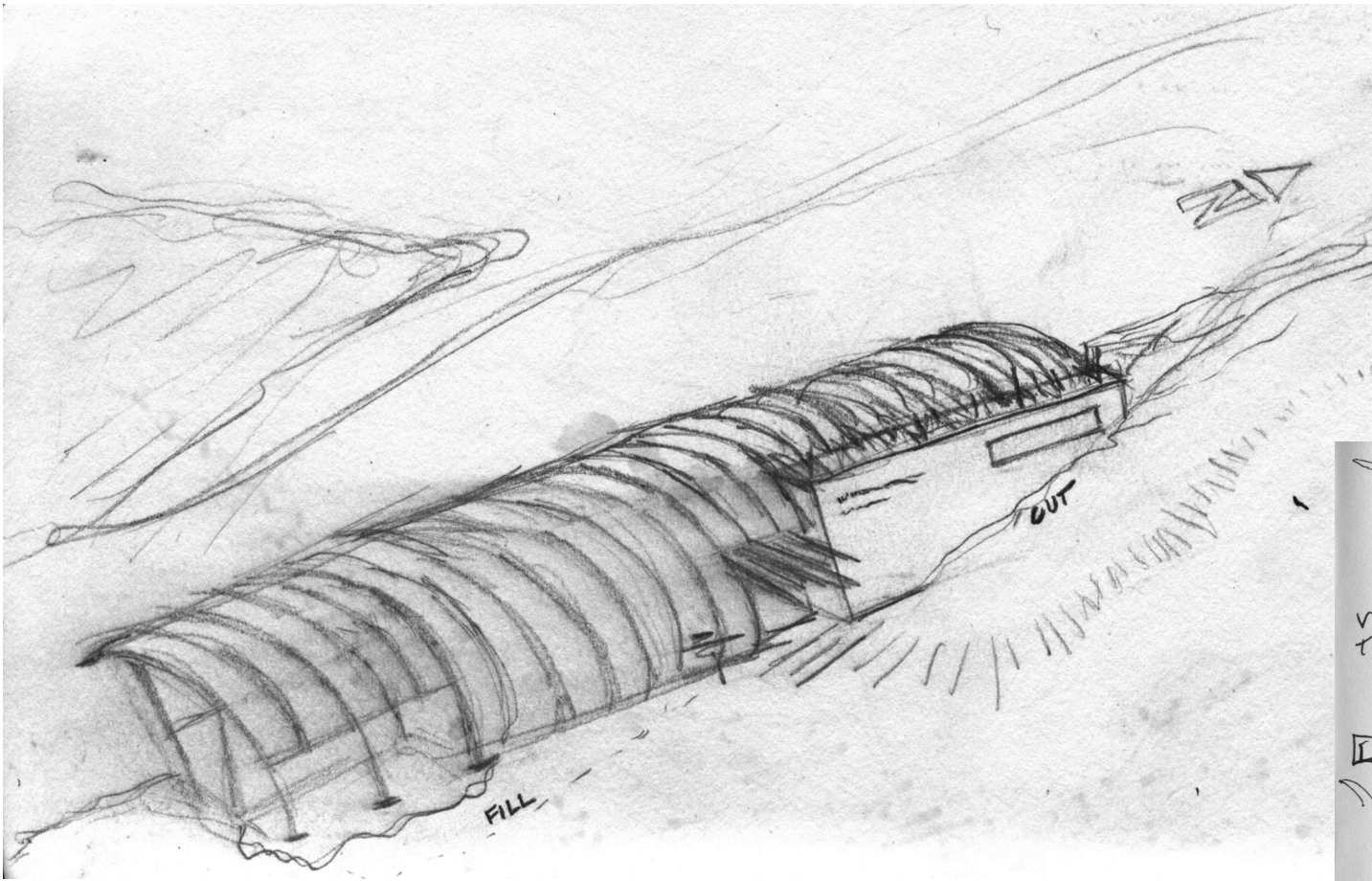
ARCHITECTURE IS  
LOOKING FOR THE  
CHEAPEST WAY TO  
PUT CURVES INTO  
A BUILDING.



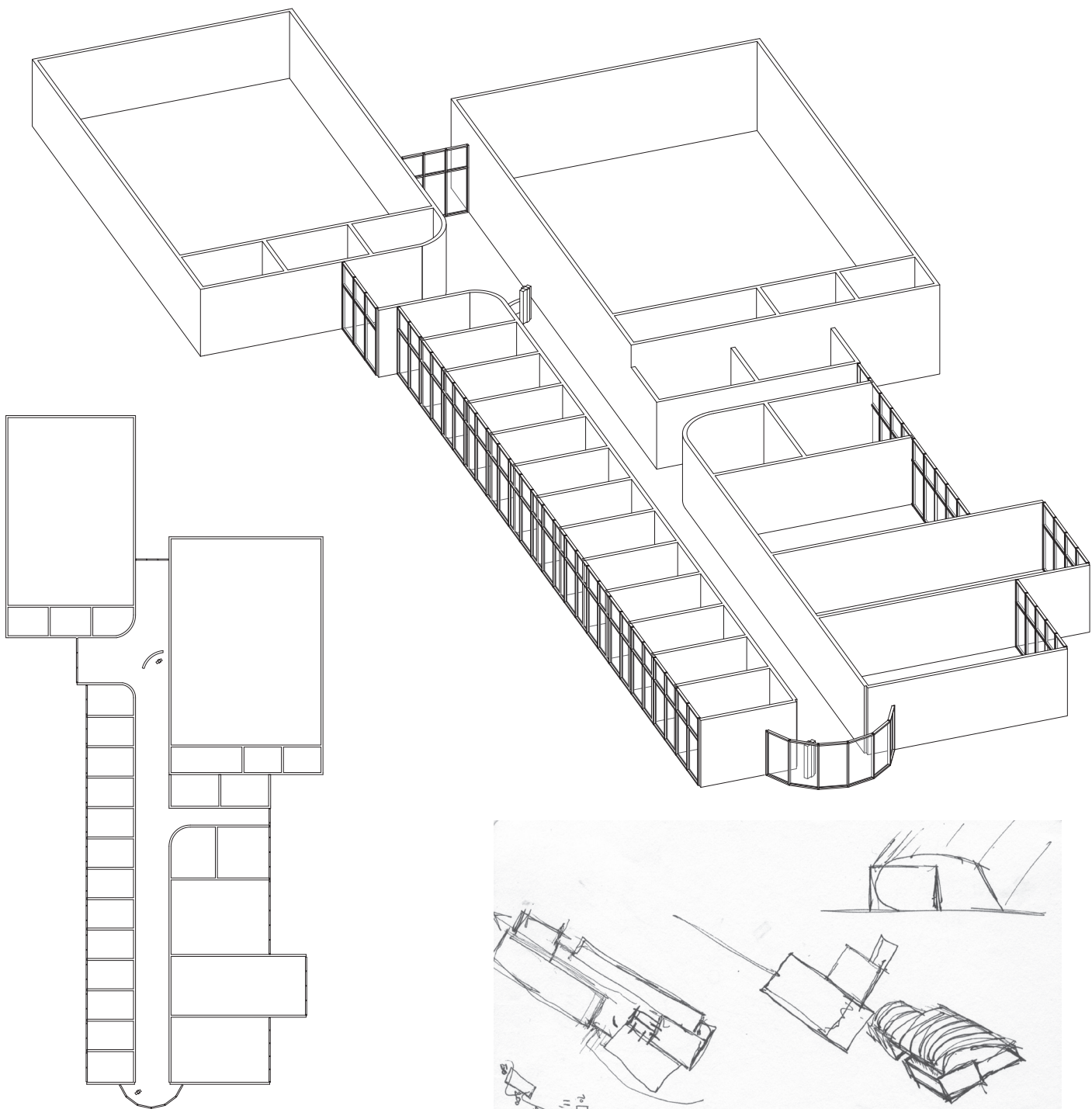
THEMIS  
THE MORE RIGID A PROGRAM BECOMES,  
THE LESS FAVORABLE THE PROJECT IS  
~~BECAUSE~~ FOR THEMIS FINALISM, BECAUSE  
~~THE POETRY~~



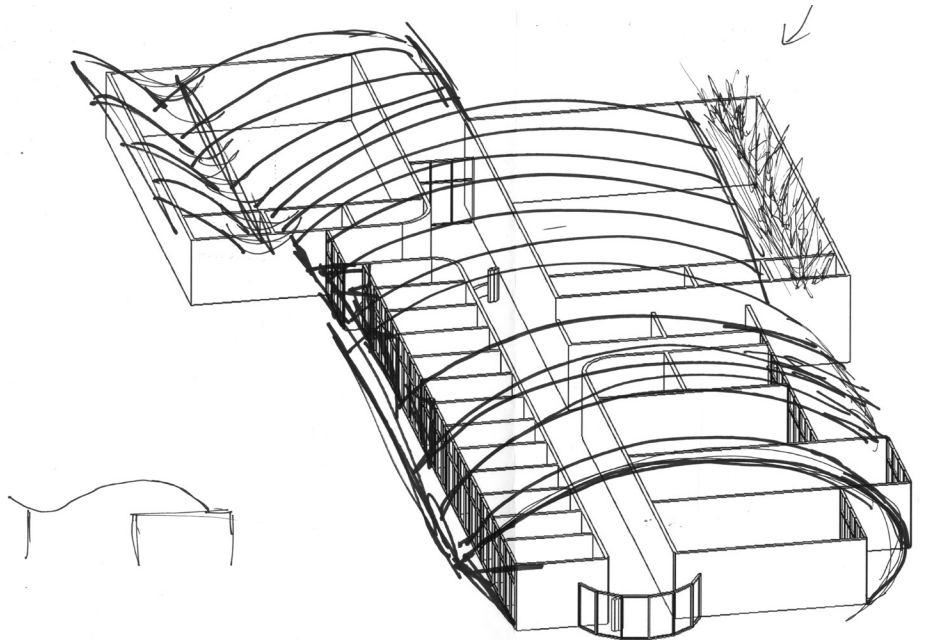
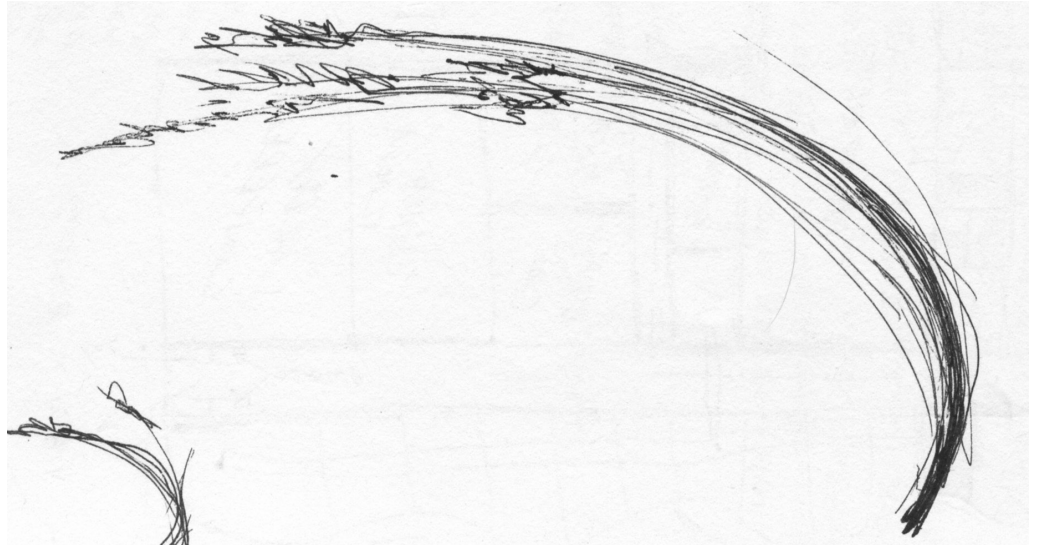
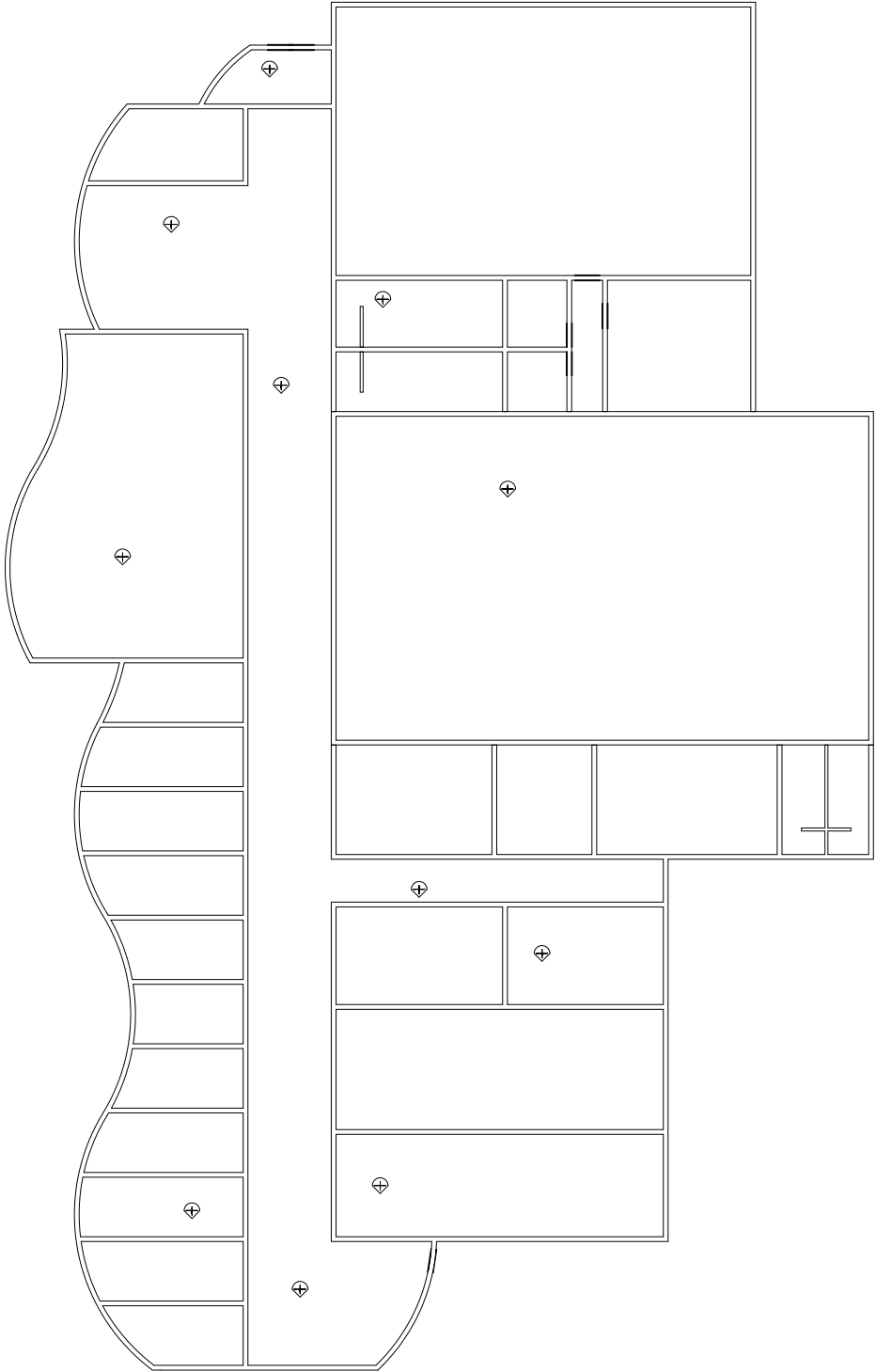


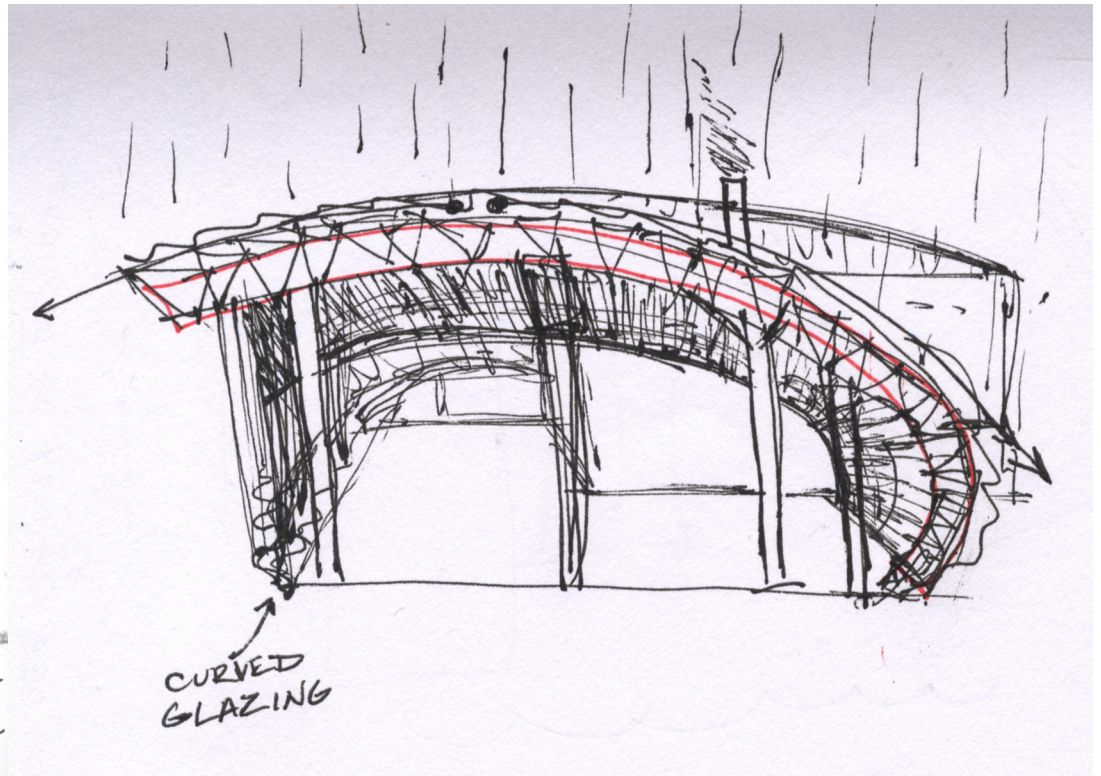
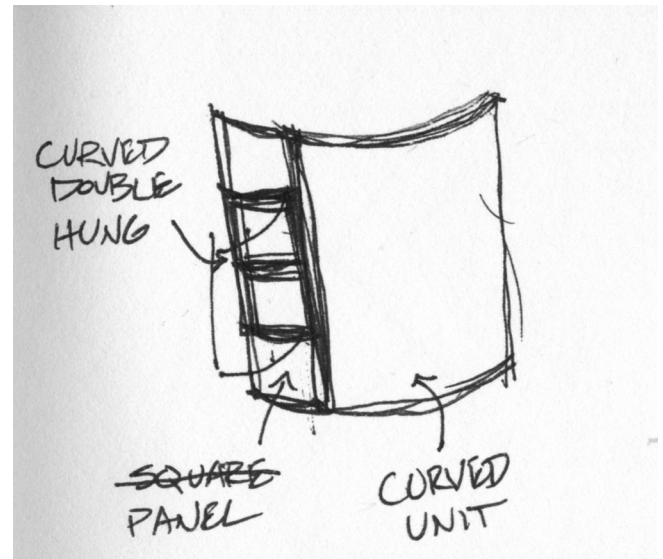
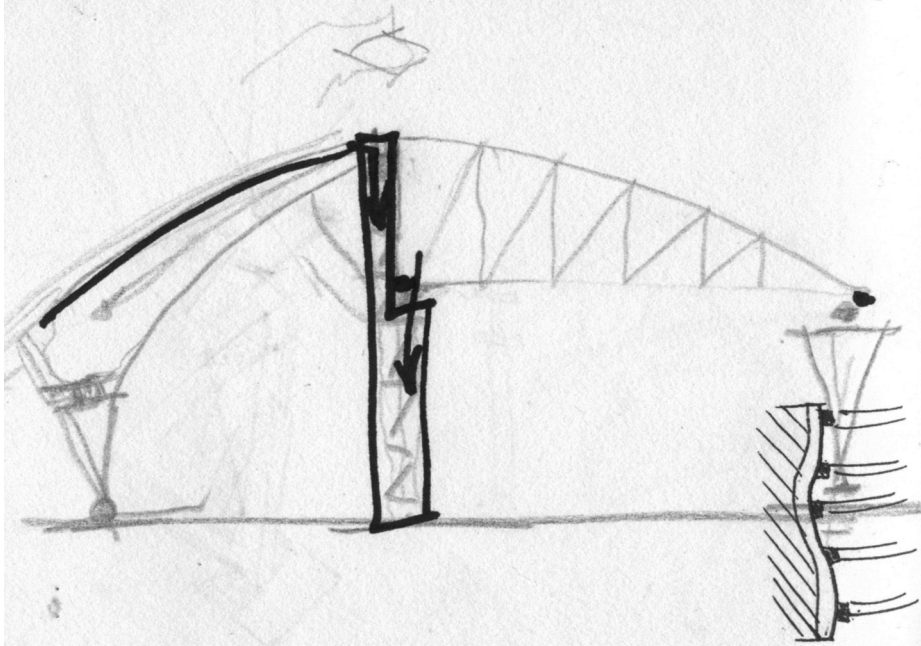
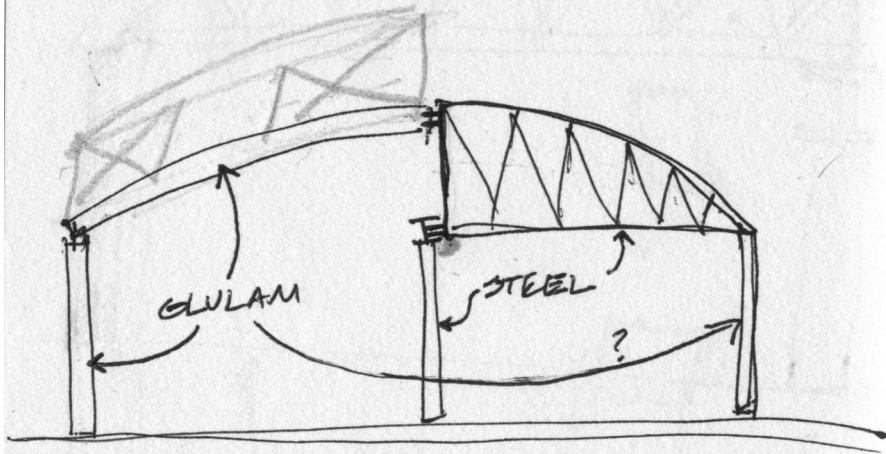
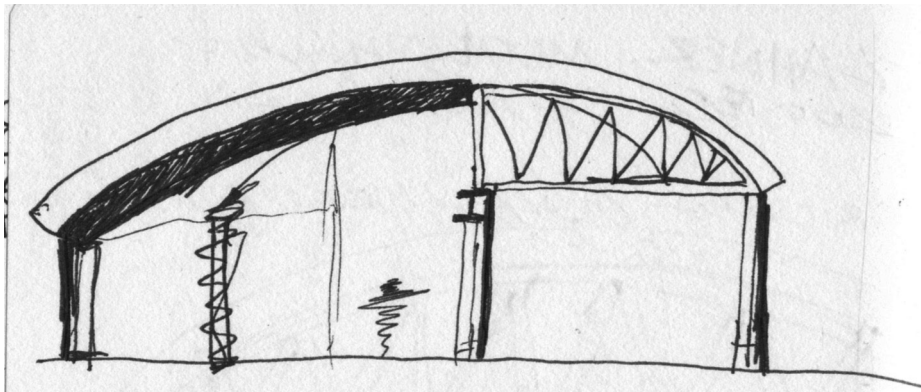


# PROCESSES MODELS



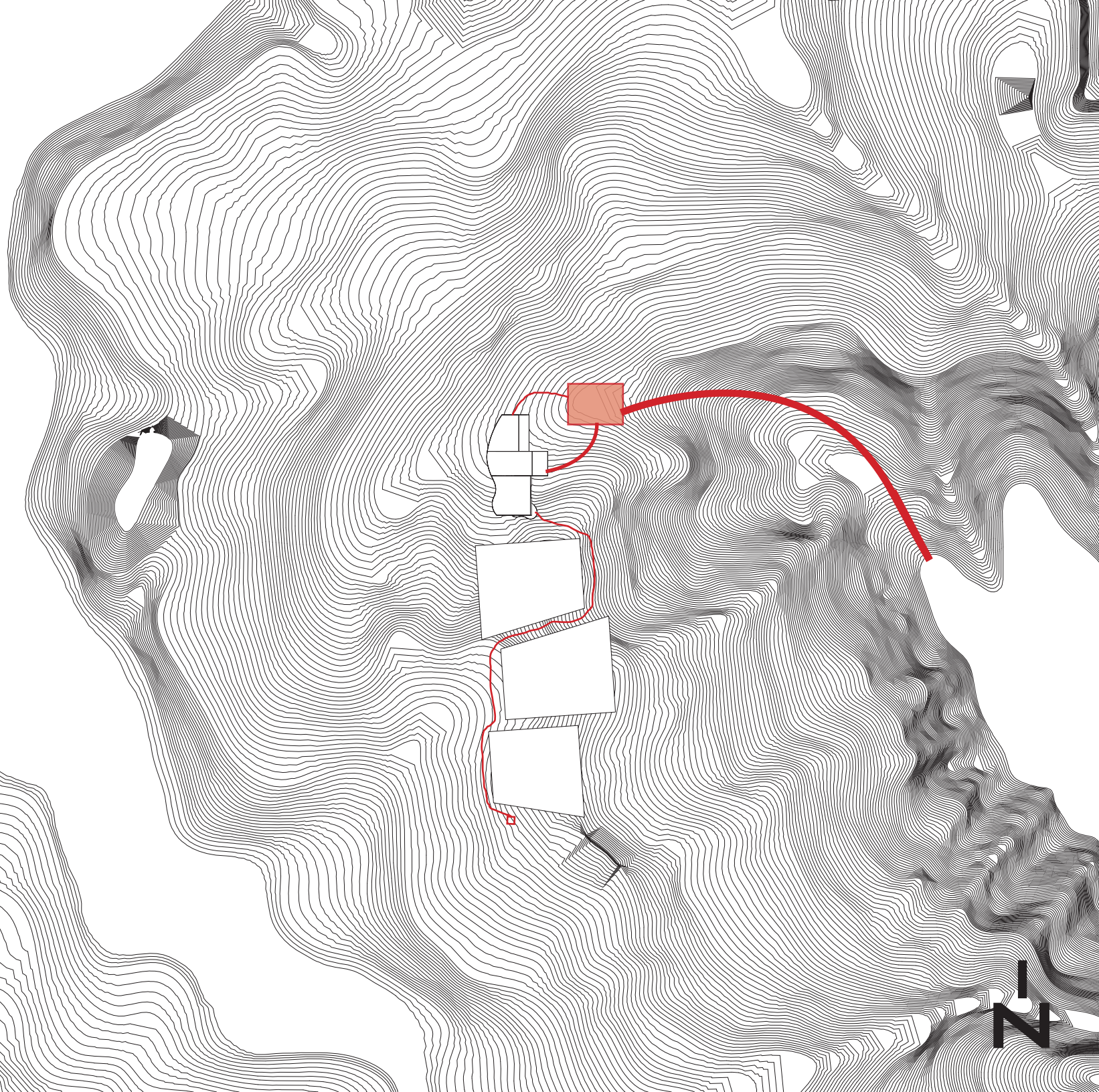






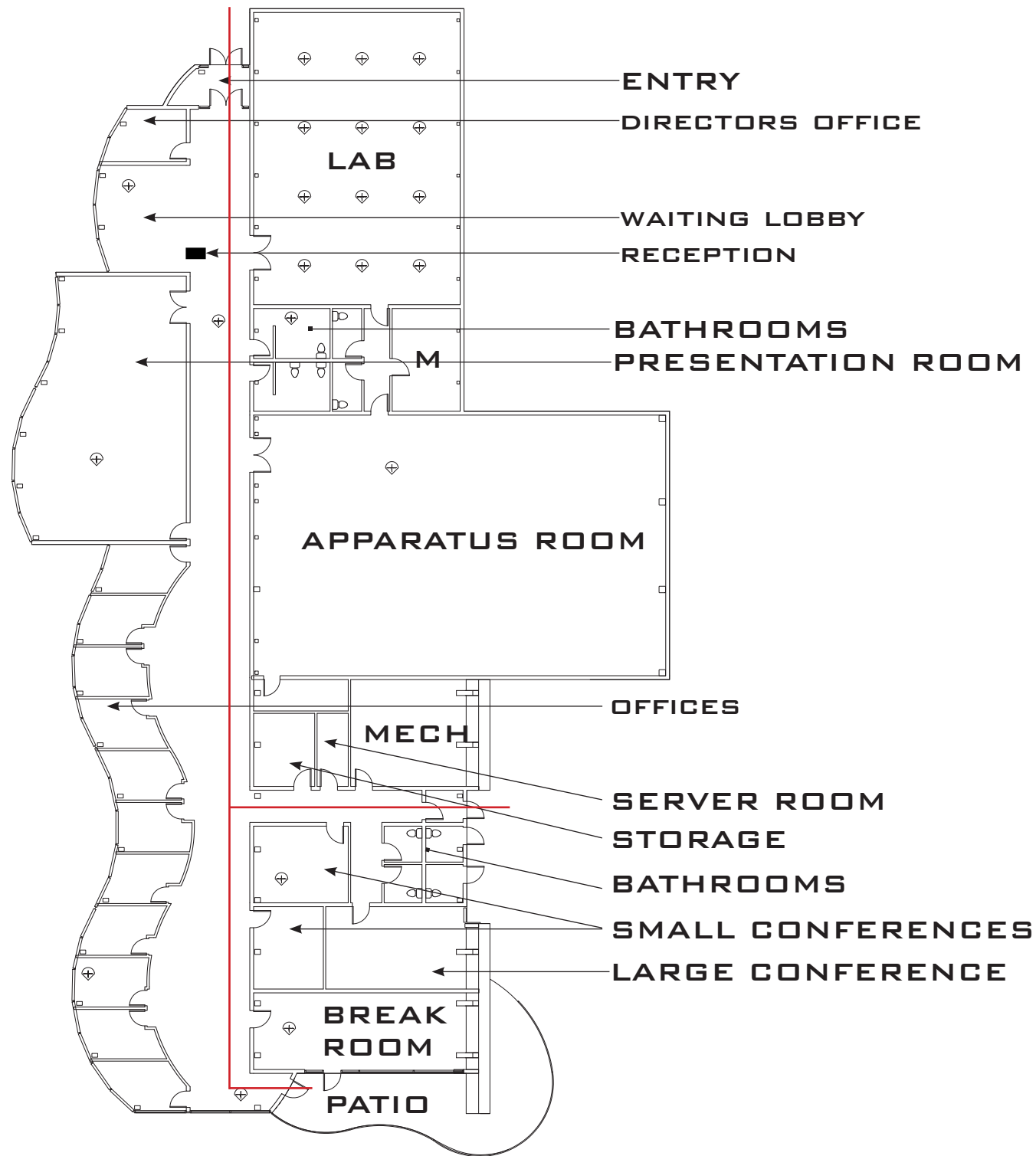


**SITE**



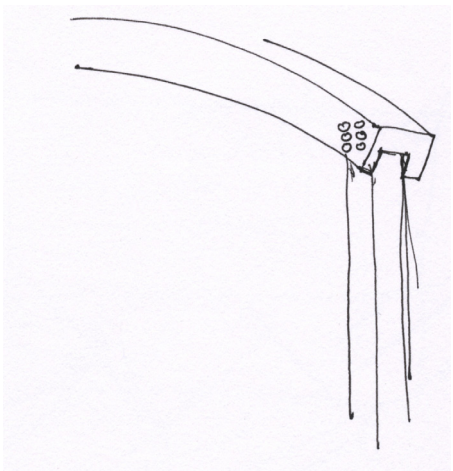
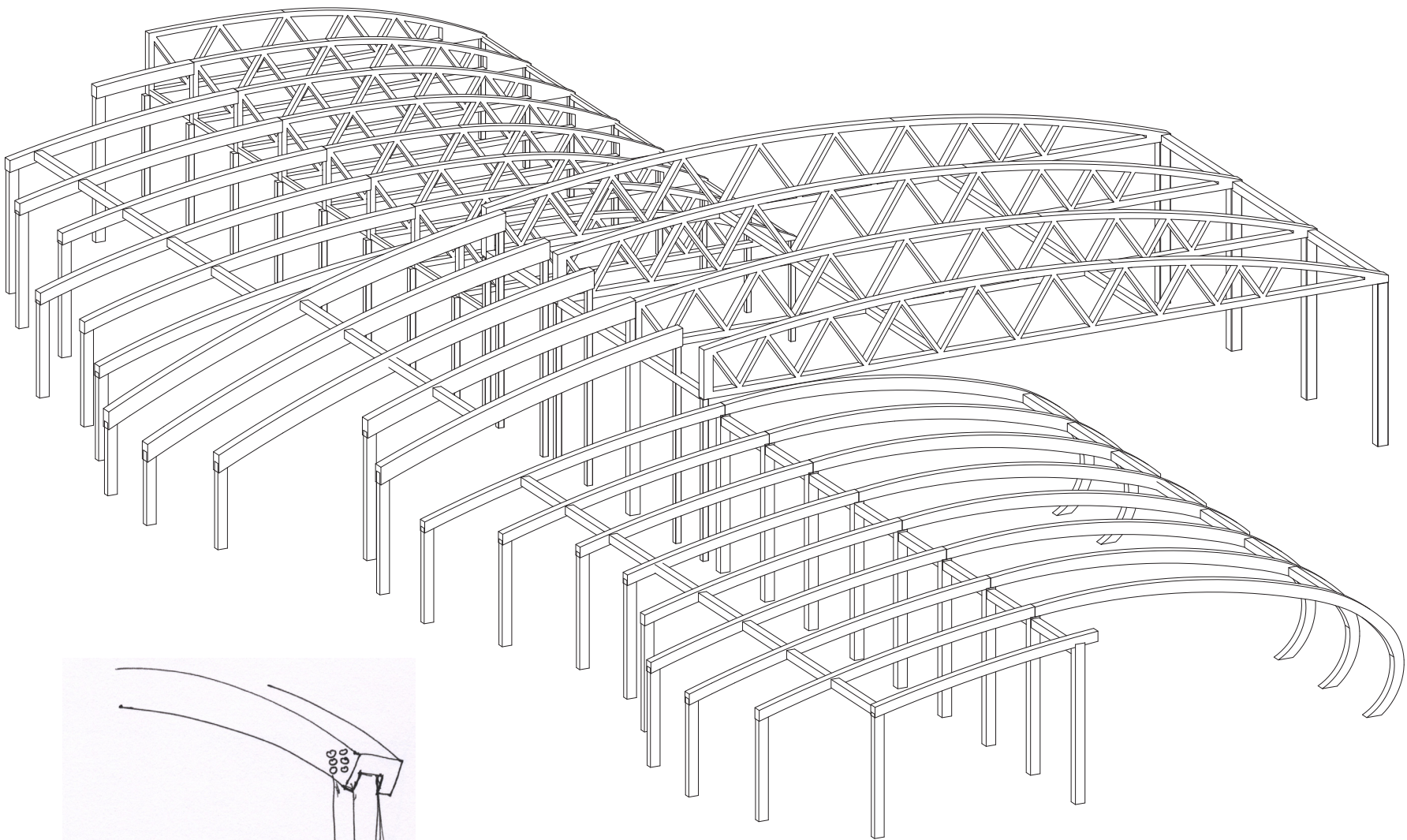
**N**

# FLOOR PLAN





# STRUKTURE



# PERSPPECTIVE

