

Seann Ringwall

ARCH 771 MXC STUDIO

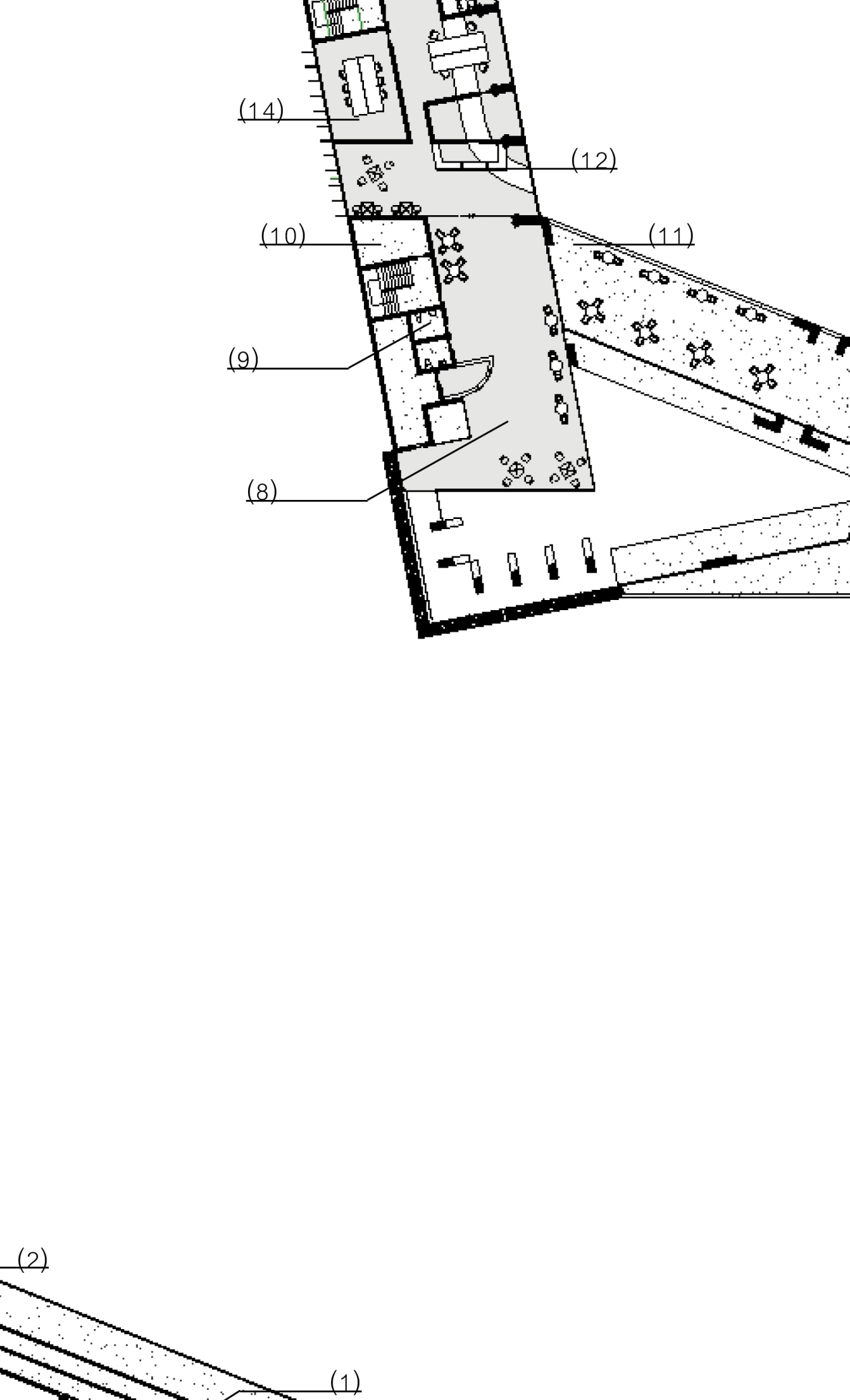
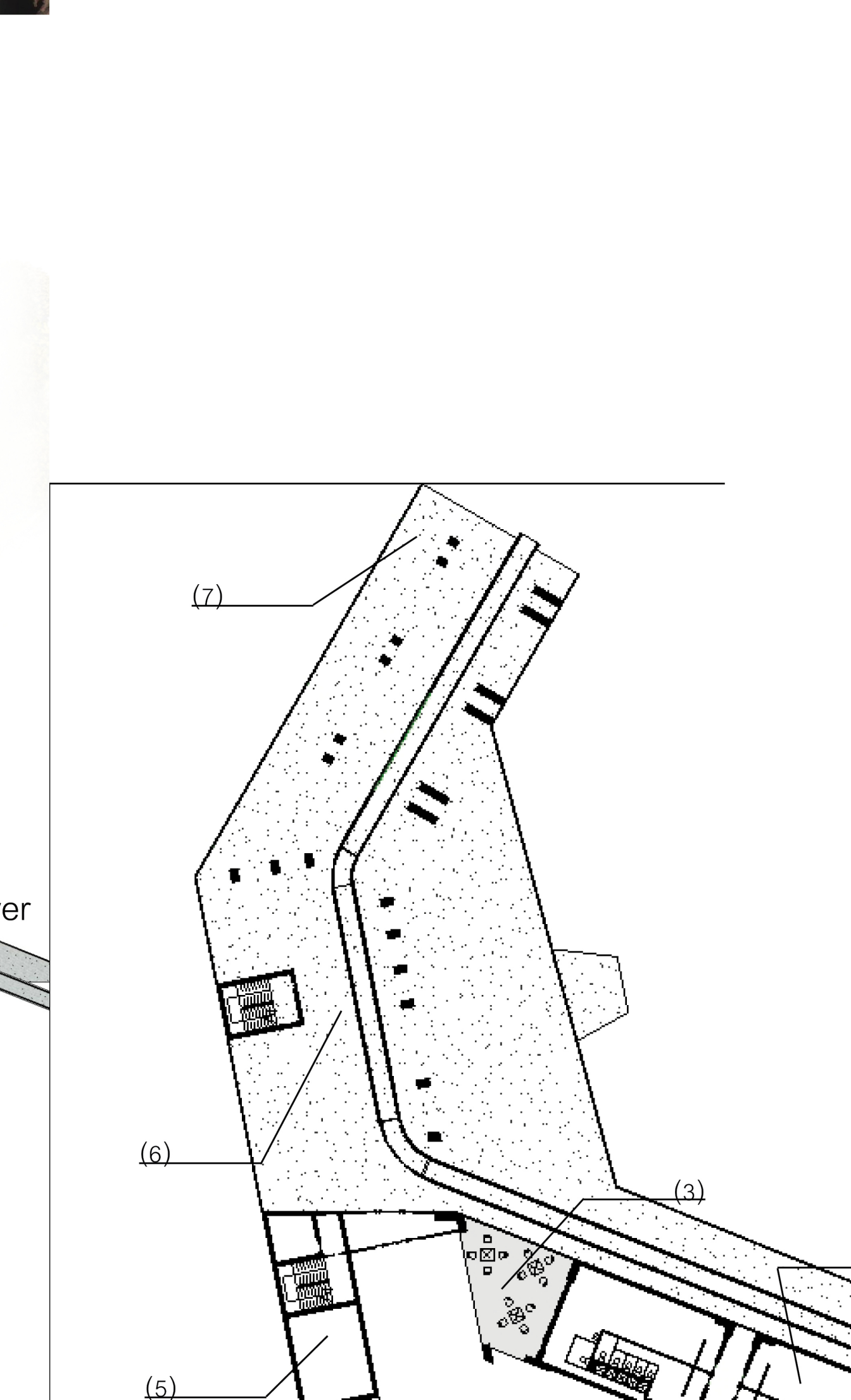
INSTRUCTOR: CINDY URNESS

# Minnesota Experimental City

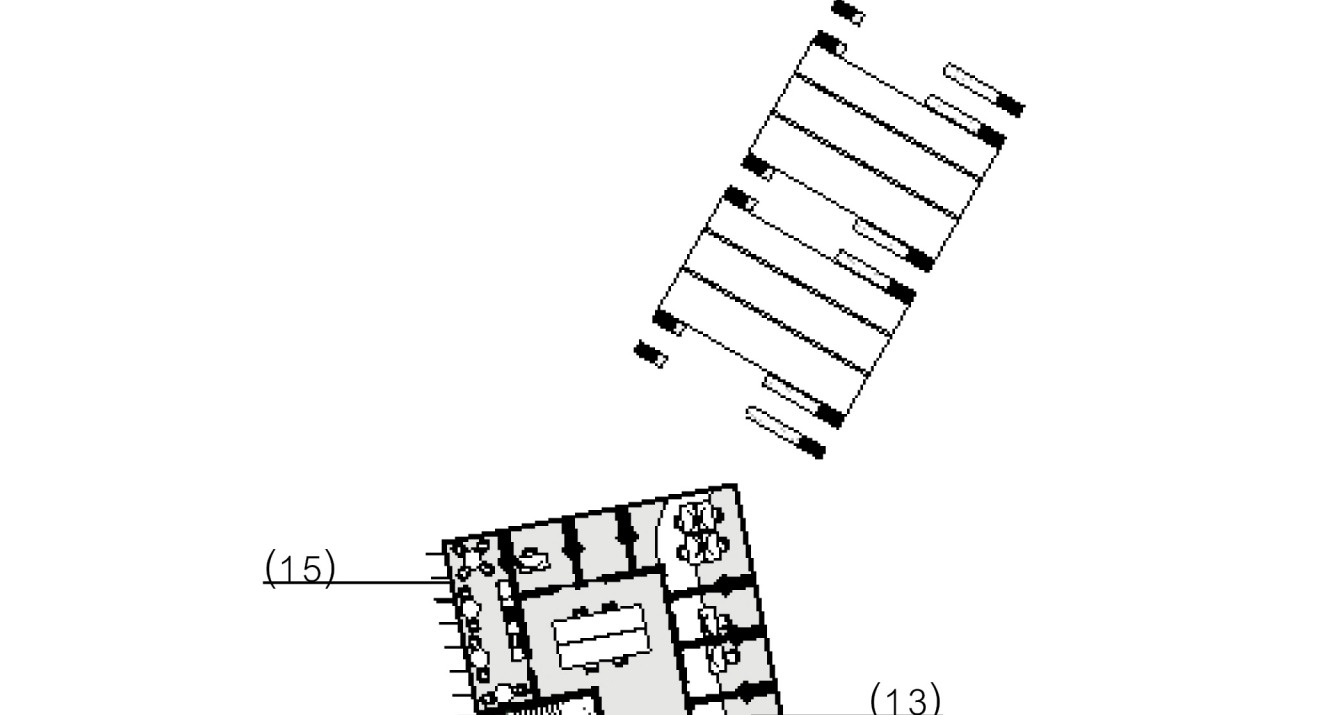
The Minnesota Experimental City or MXC is a future community spread throughout the rolling hills around Alexandria. The community seeks to be easy on the land and cut back on pollution and vehicles. This transportation center, is the most southbound of the three entry points into the MXC. This center will primarily see commuters coming from Minneapolis and Chicago, as a result the building is primarily geared towards getting people into the downtown area through multi-modal transit systems.



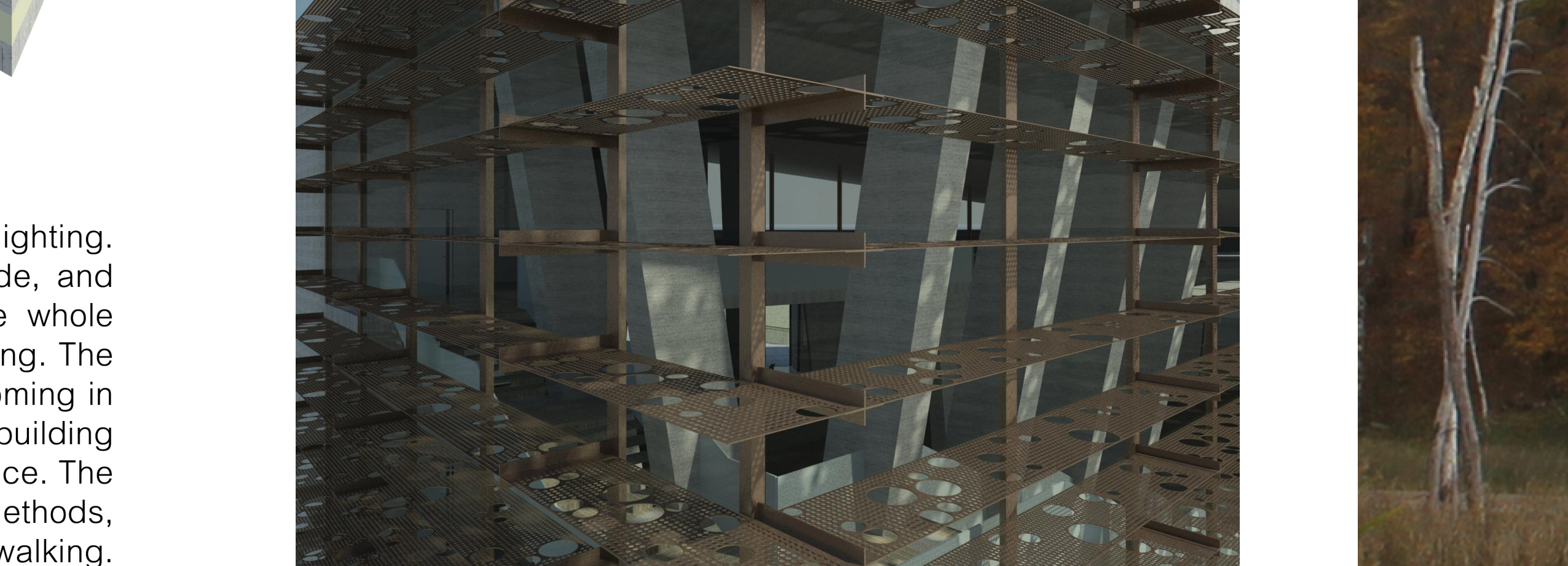
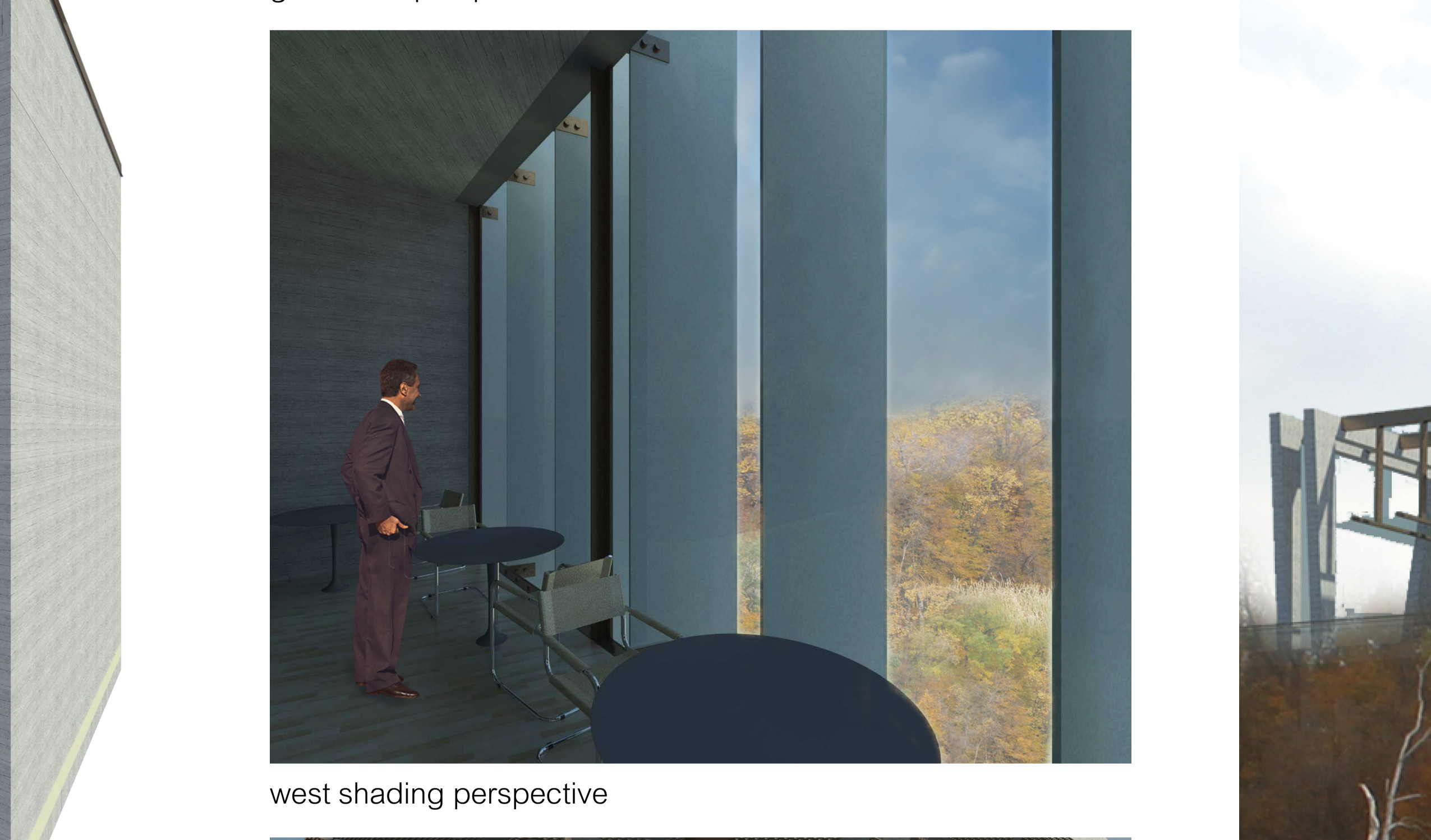
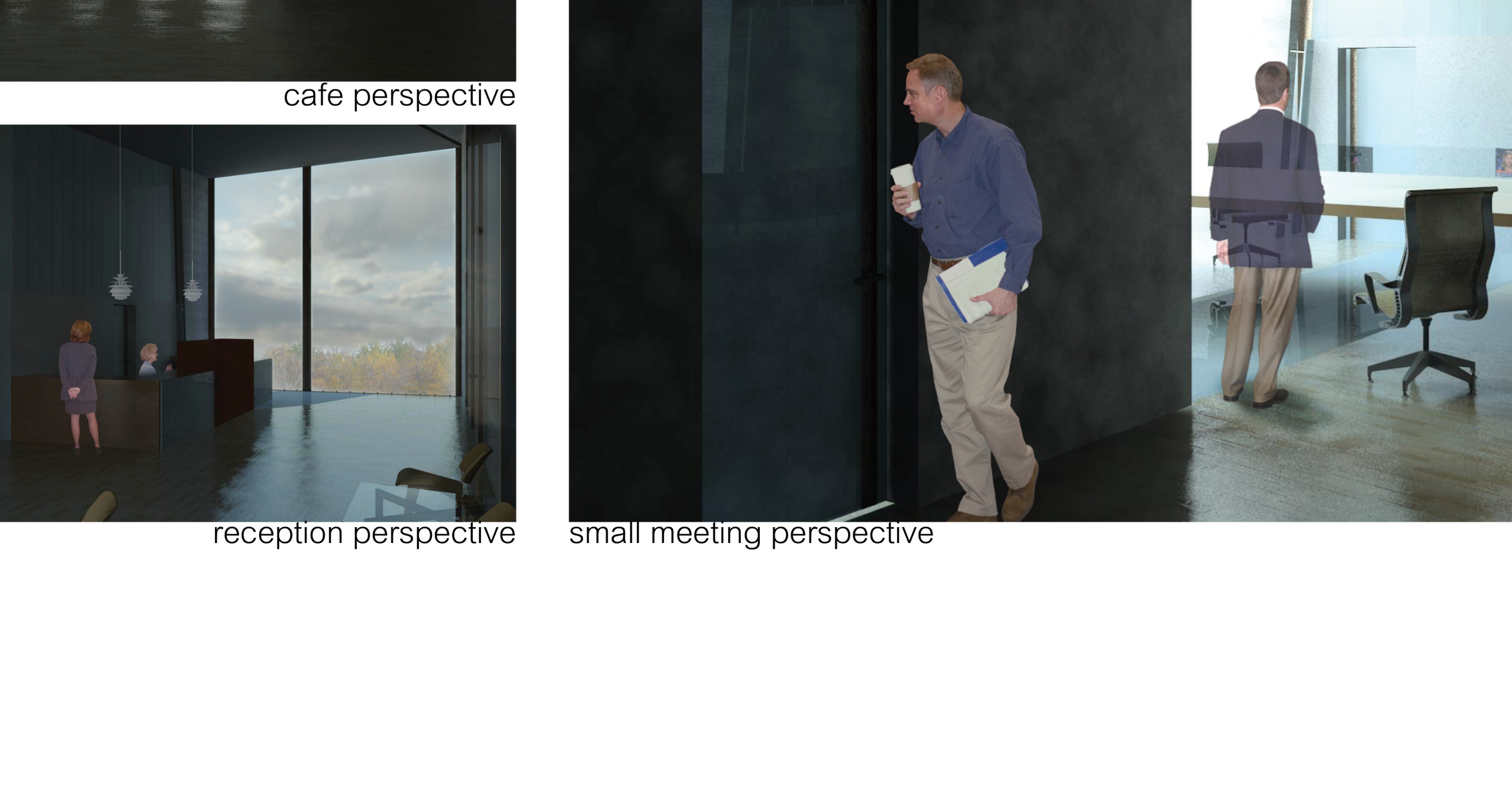
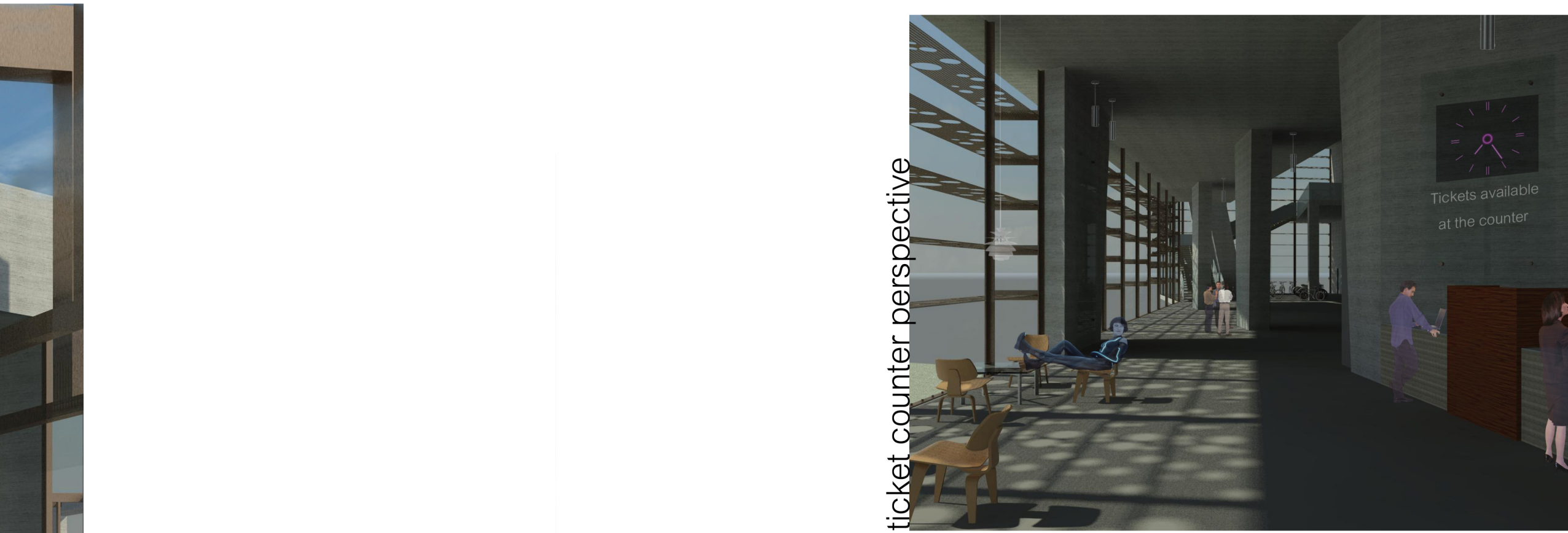
This transportation center is located off of I-94 exit 90, ten miles west of Alexandria. Continuing on to Skrove Road, the road follows the contours and wraps along the south side into a parking garage. The building is lifted above the landscape and overlooks Moon Lake. The pathway weaves its way across the landscape and stops at the rail platform on the north side of County Road 82. The pathway then continues onto downtown of the MXC.



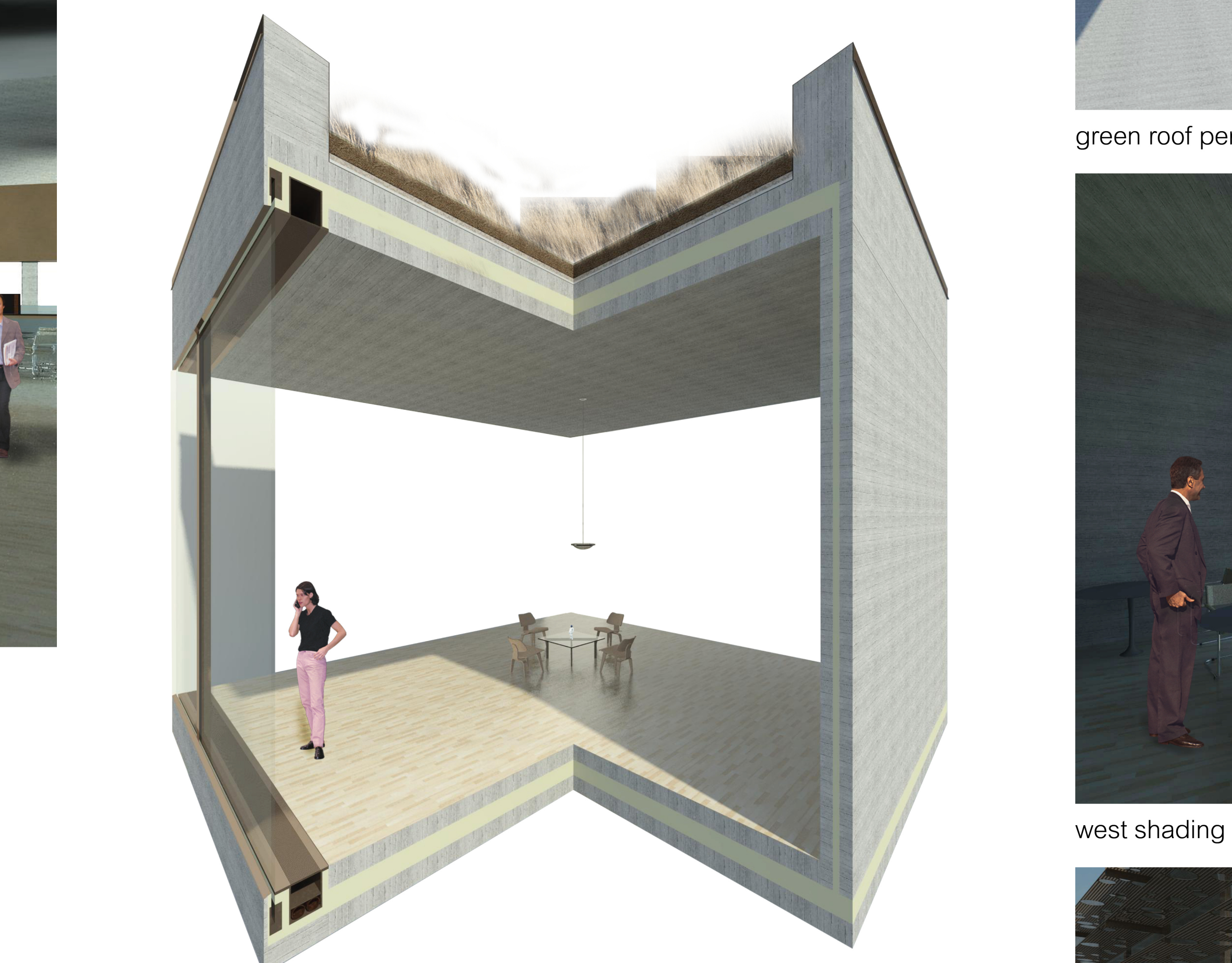
- Level 1
- (1) Tickets/Office
  - (2) Locker Room
  - (3) Waiting
  - (4) Bike Rentals/Sales
  - (5) Mechanical/Storage
  - (6) Tram Boarding
  - (7) Bike Path



- Level 2
- (8) Cafe
  - (9) Bathroom
  - (10) Mechanical/Storage
  - (11) Patio
  - (12) Reception
  - (13) Office
  - (14) Meeting Space
  - (15) Kitchen



south shading perspective



assembly/mechanical perspective

Sustainable strategies primarily revolve around daylighting. There are horizontal shading planes on the south side, and vertical planes on the western side. Throughout the whole building, one is never more than 30 feet from daylighting. The whole building itself is lifted off the landscape, only coming in contact through its structural columns. The roof of the building is a natural prairie green roof, requiring little maintenance. The building also revolves around multi-modal transit methods, encouraging commuters to pursue rail, bike, or walking.



# Minnesota Experimental City

The Minnesota Experimental City or MXC is a future community spread throughout the rolling hills around Alexandria. The community seeks to be easy on the land and cut back on pollution and vehicles. This transportation center, is the most southbound of the three entry points into the MXC. This center will primarily see commuters coming from Minneapolis and Chicago, as a result the building is primarily geared towards getting people into the downtown area through multi-modal transit systems.

This transportation center is located off of I-94 exit 90, ten miles west of Alexandria. Continuing on to Skrove Road, the road follows the contours and wraps along the south side into a parking garage. The building is lifted above the landscape overlooking Moon Lake. The pathway weaves its way across the landscape and stops at the rail platform on the north side of County Road 82. The pathway then continues on to downtown of the MXC.



Bike/Tram Path to Rail Platform

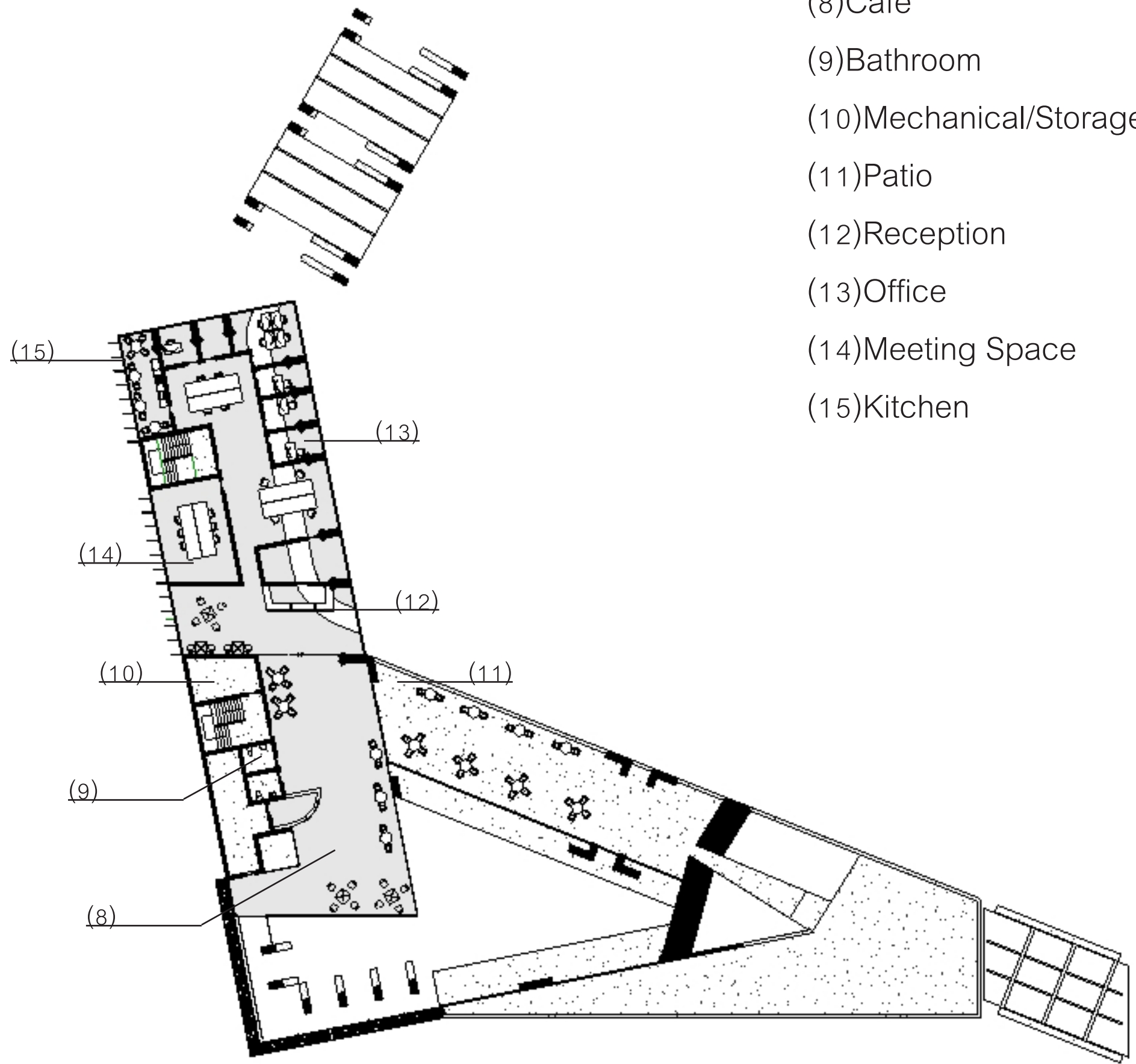
To Merge Tower

To Parking Garage

Scale 1"=64'

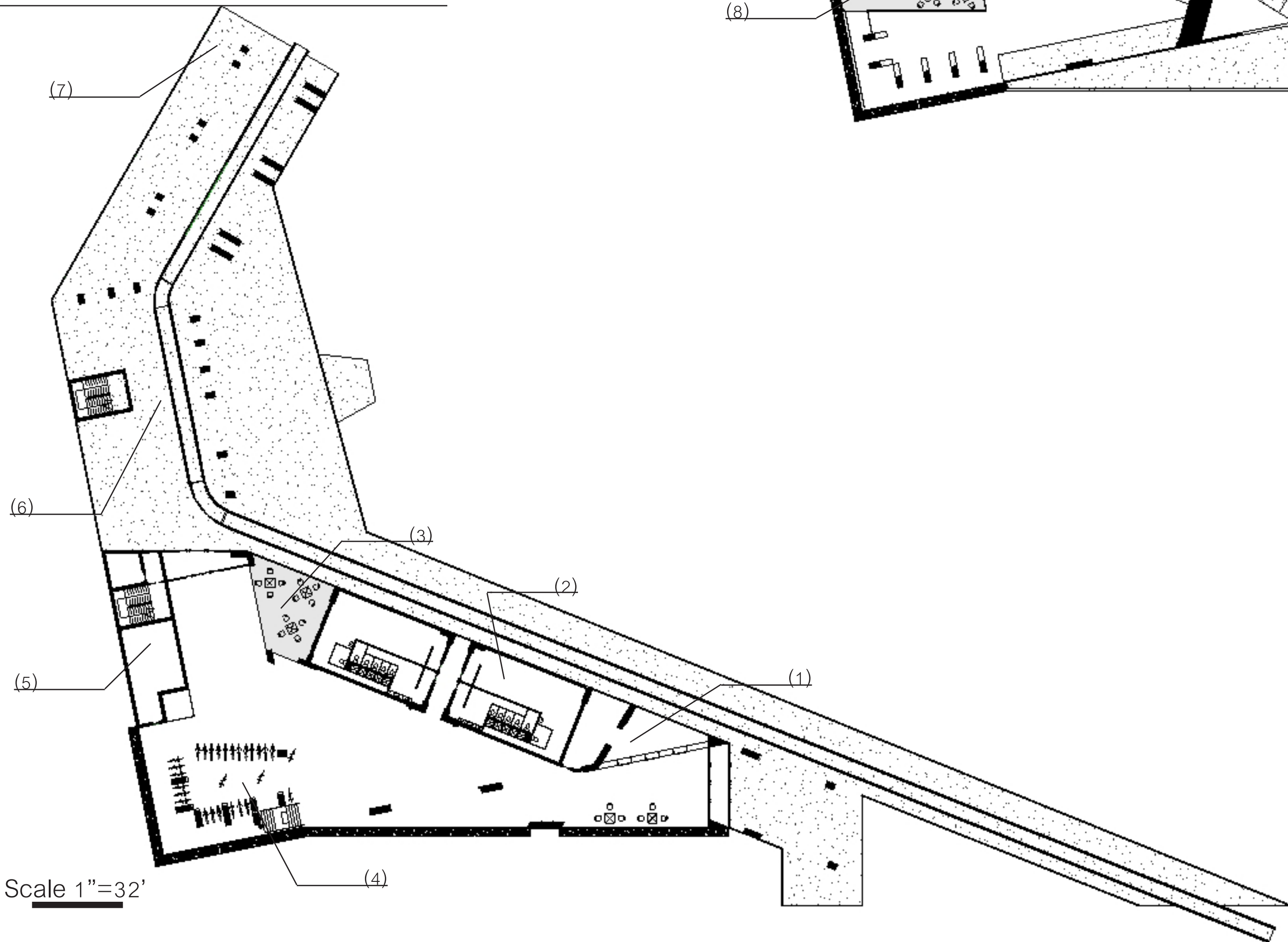
Level 2

- (8)Cafe
- (9)Bathroom
- (10)Mechanical/Storage
- (11)Patio
- (12)Reception
- (13)Office
- (14)Meeting Space
- (15)Kitchen



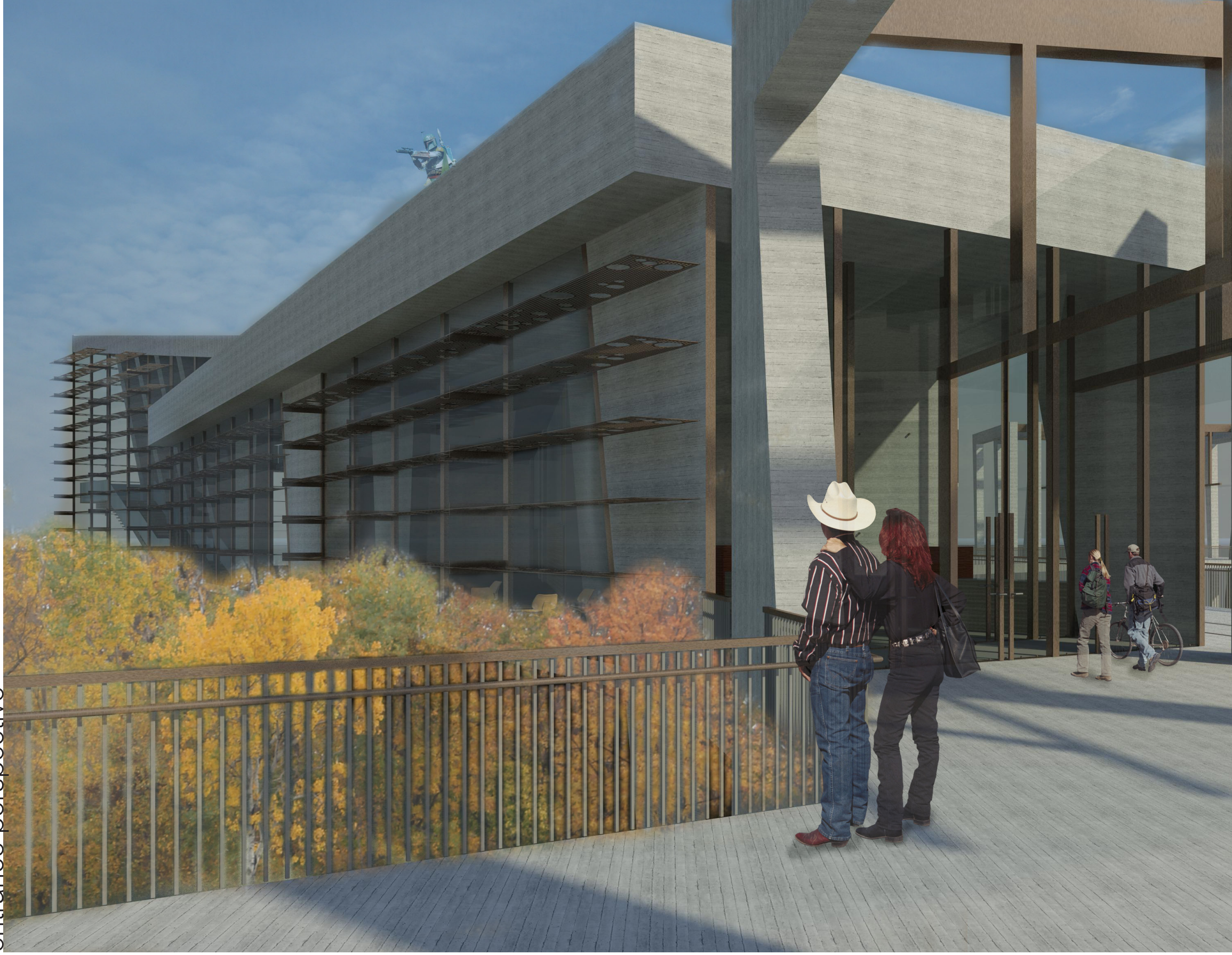
Level 1

- (1)Tickets/Office
- (2)Locker Room
- (3)Waiting
- (4)Bike Rentals/Sales
- (5)Mechanical/Storage
- (6)Tram Boarding
- (7)Bike Path

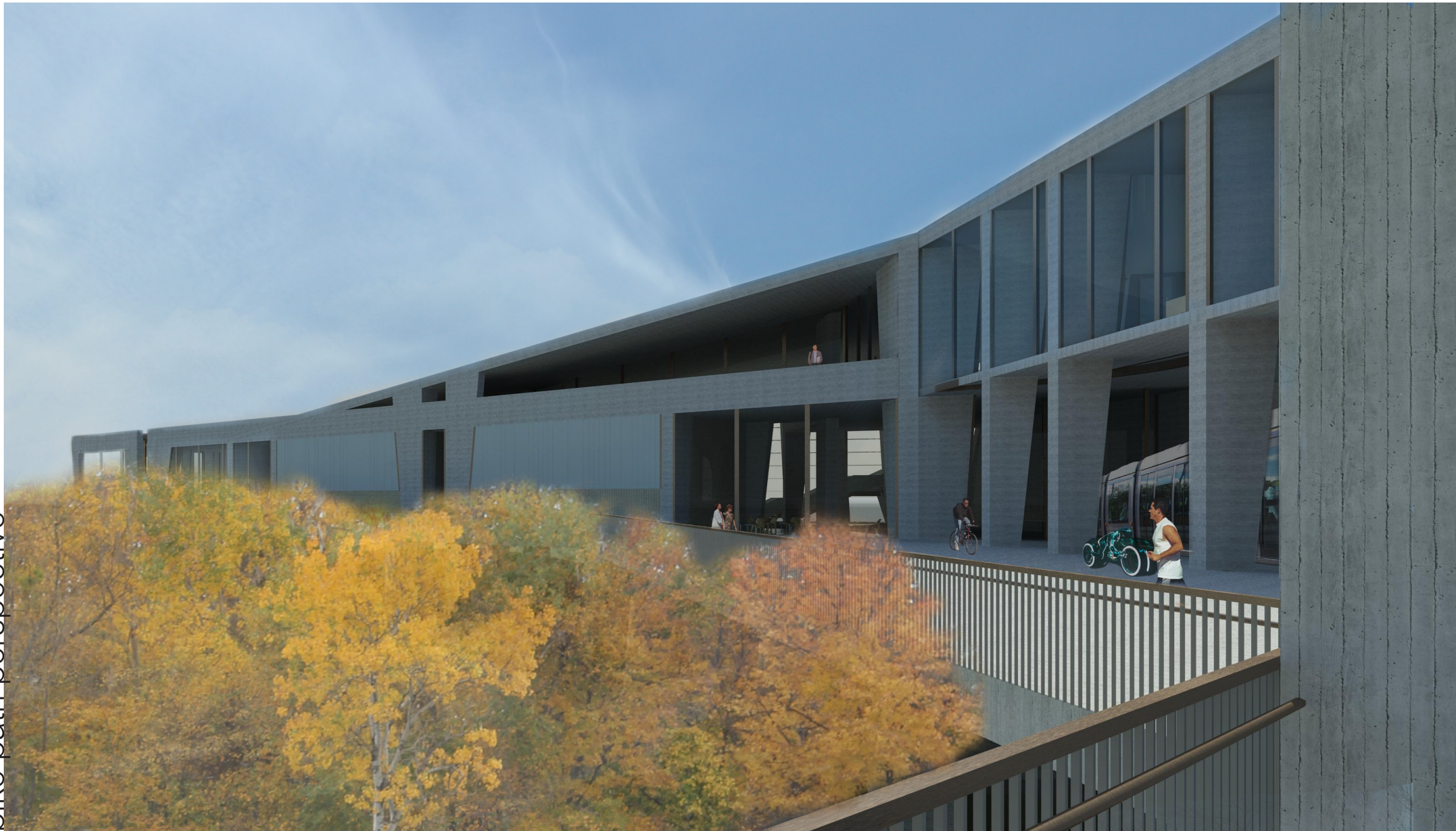


Scale 1"=32'

entrance perspective



bike path perspective



ticket counter perspective



lobby perspective

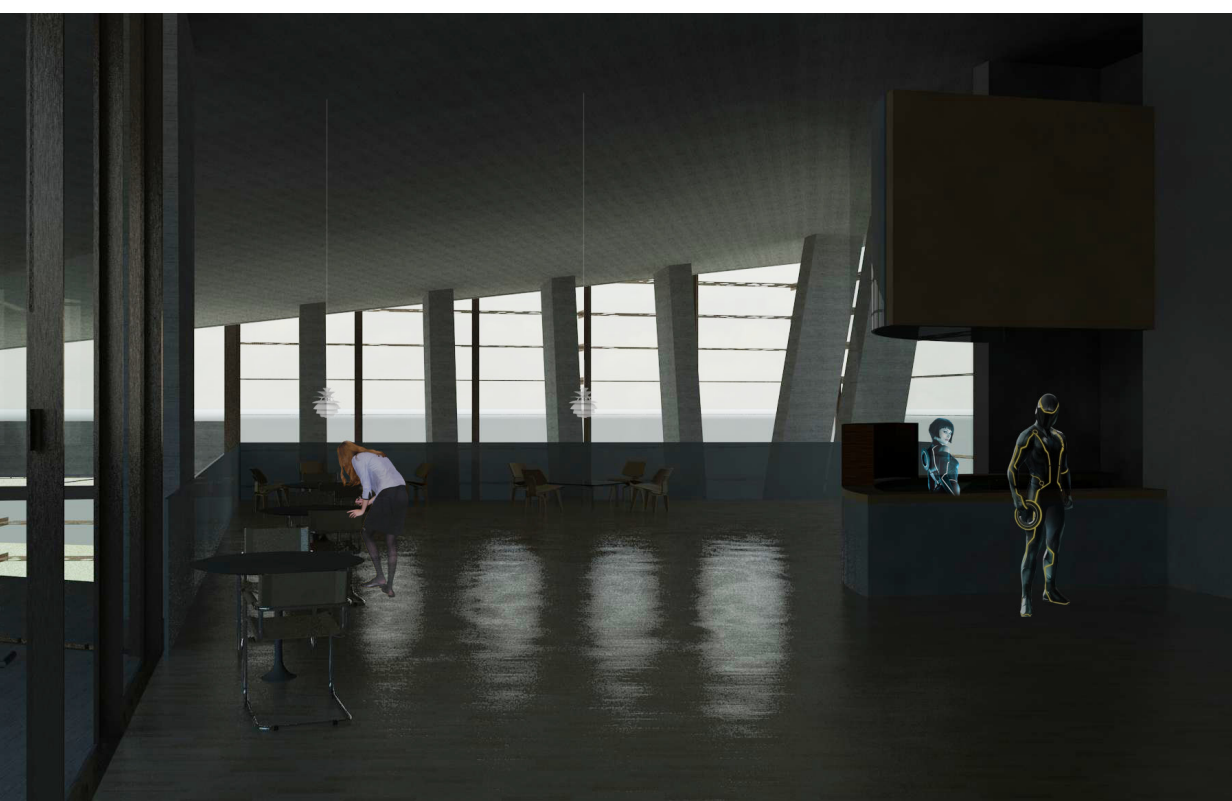


waiting area perspective



northward section perspective





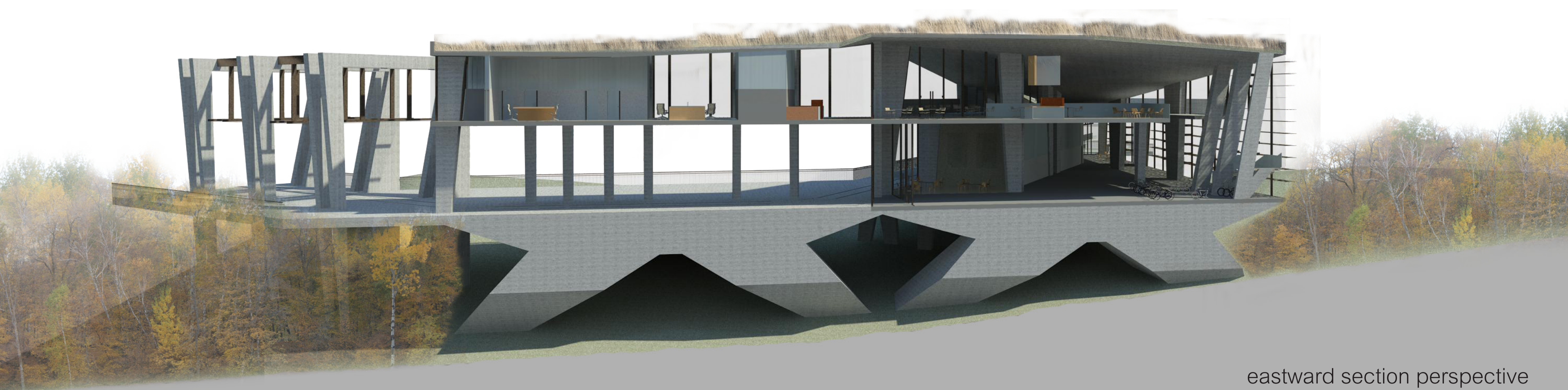
cafe perspective



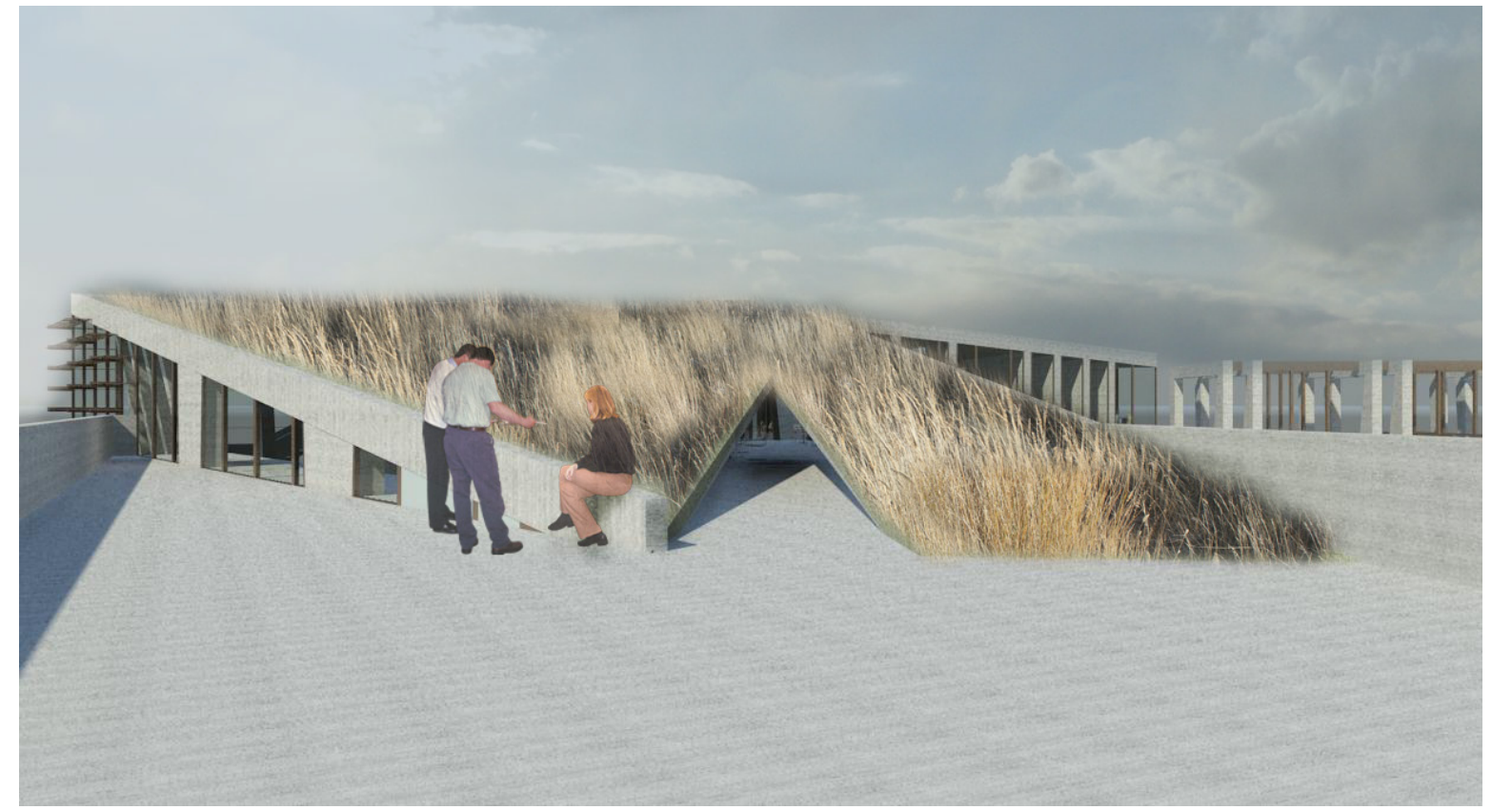
reception perspective



small meeting perspective



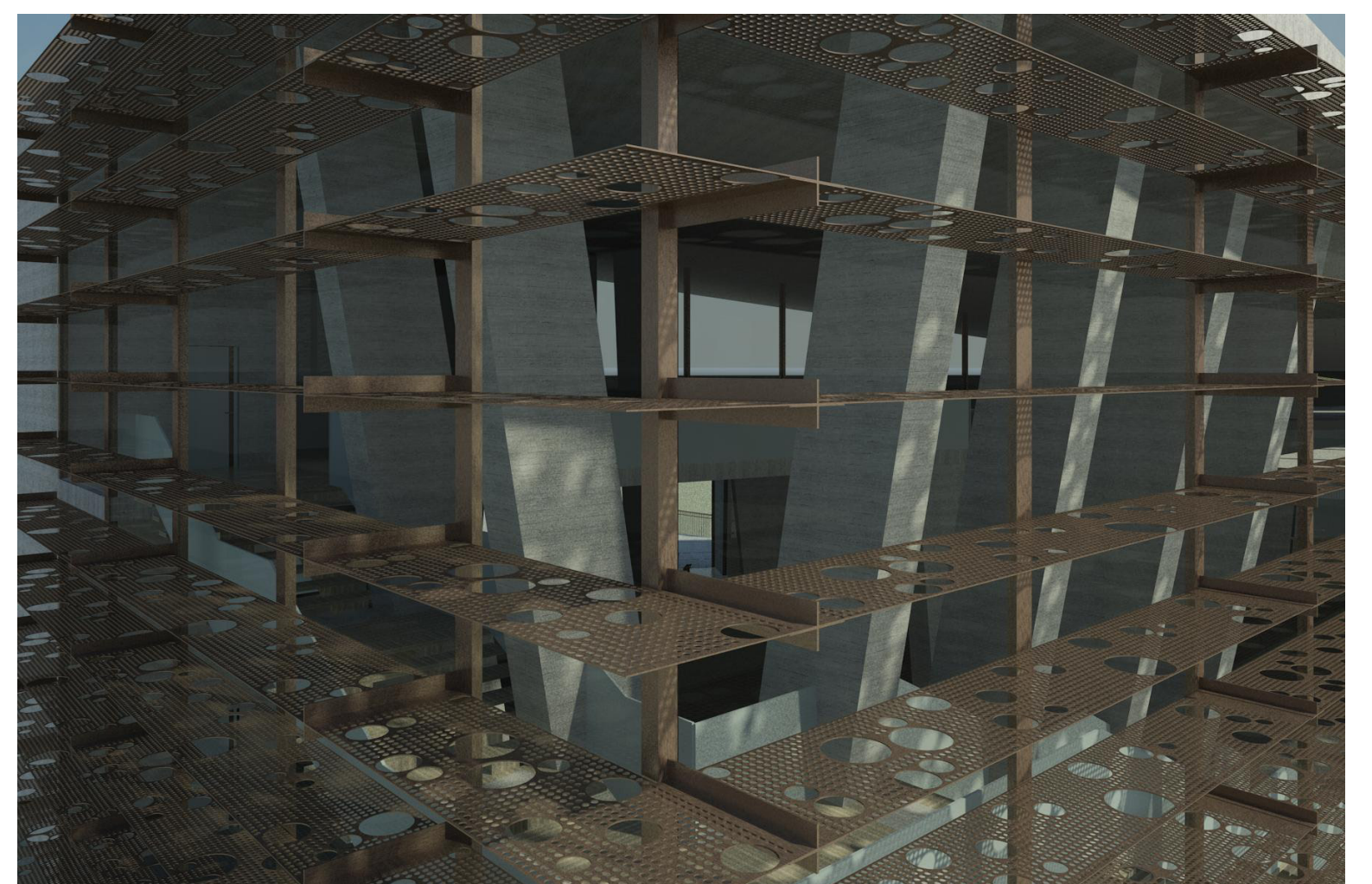
eastward section perspective



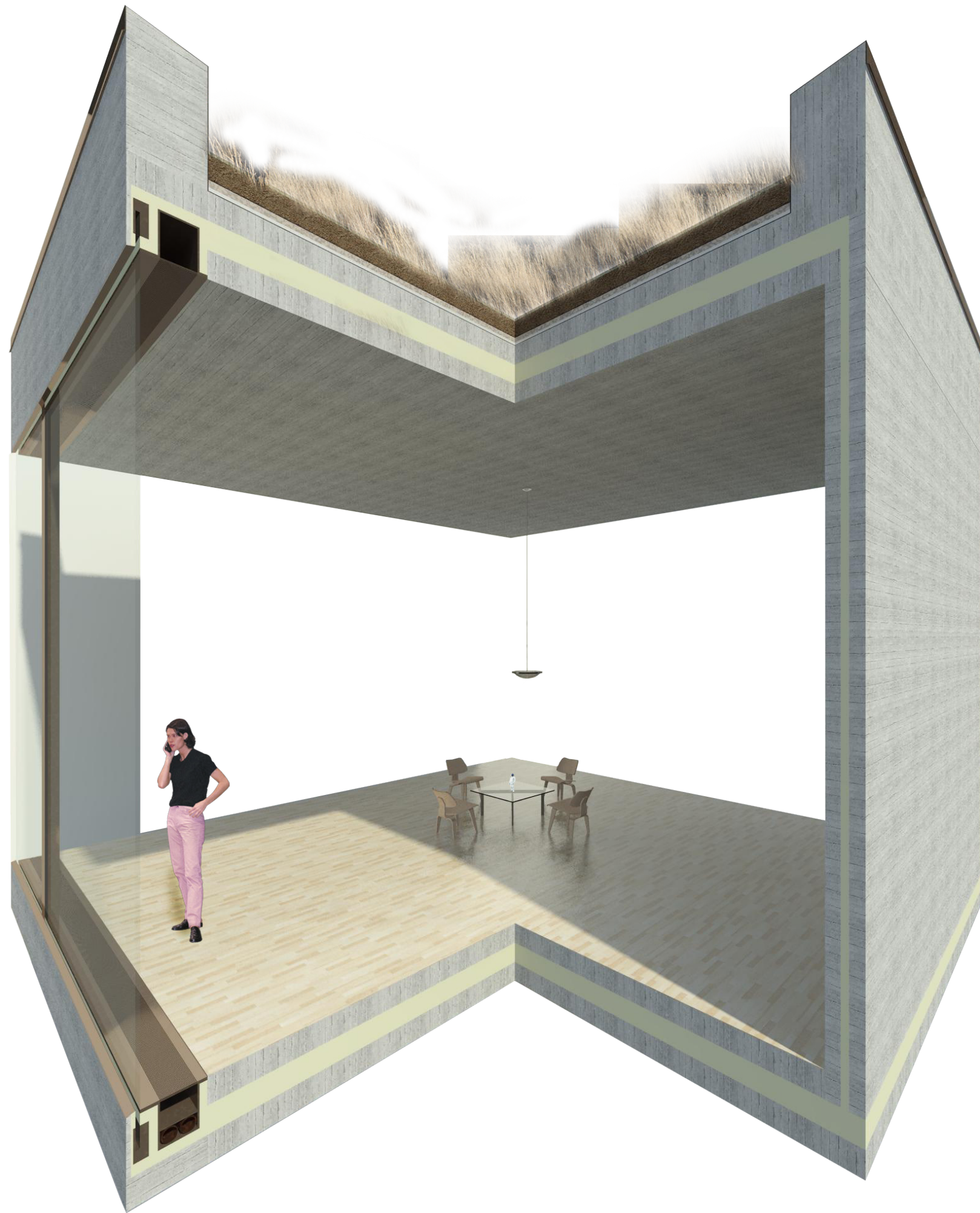
green roof perspective



west shading perspective



south shading perspective



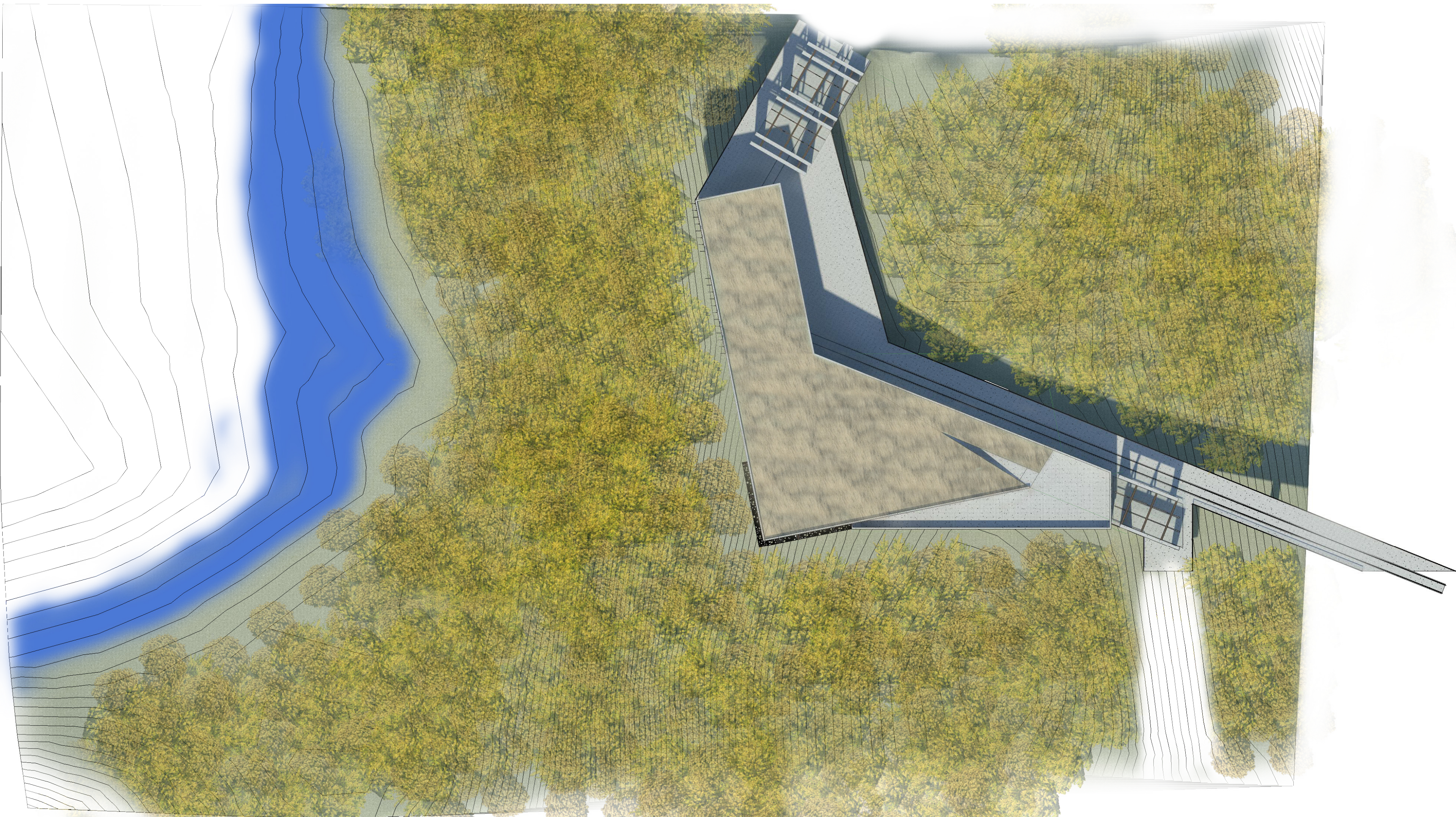
assembly/mechanical perspective

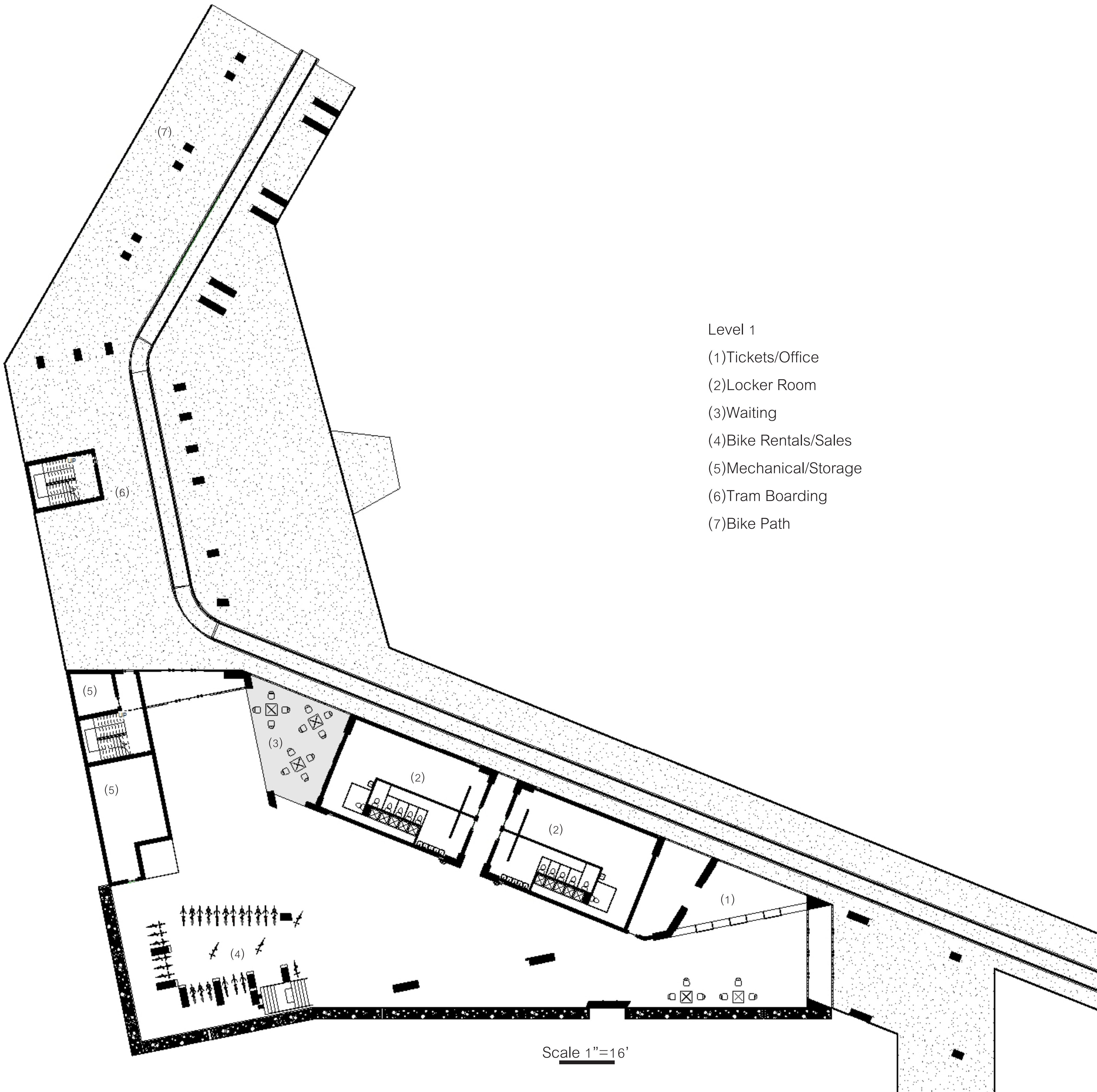
Sustainable strategies primarily revolve around daylighting. There are horizontal shading planes on the south side, and vertical planes on the western side. Throughout the whole building, one is never more than 30 feet from daylighting. The whole building itself is lifted off the landscape, only coming in contact through its structural columns. The roof of the building is a natural prairie green roof, requiring little maintenance. The building also revolves around multi modal transit methods, encouraging commuters to pursue rail, bike, or walking.







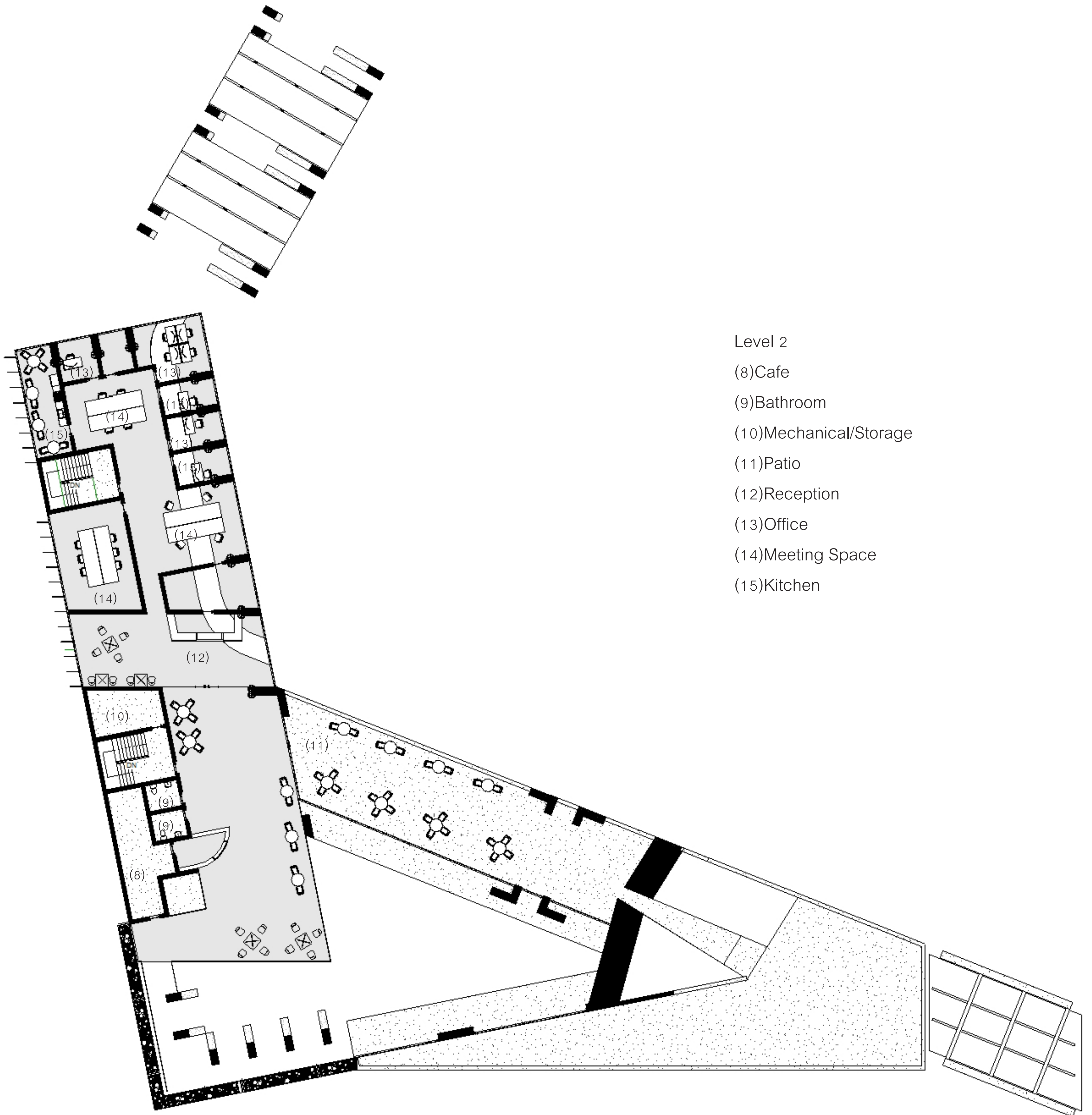




Level 1

- (1) Tickets/Office
- (2) Locker Room
- (3) Waiting
- (4) Bike Rentals/Sales
- (5) Mechanical/Storage
- (6) Tram Boarding
- (7) Bike Path

Scale 1"=16'



Level 2

(8)Cafe

(9)Bathroom

(10)Mechanical/Storage

(11)Patio

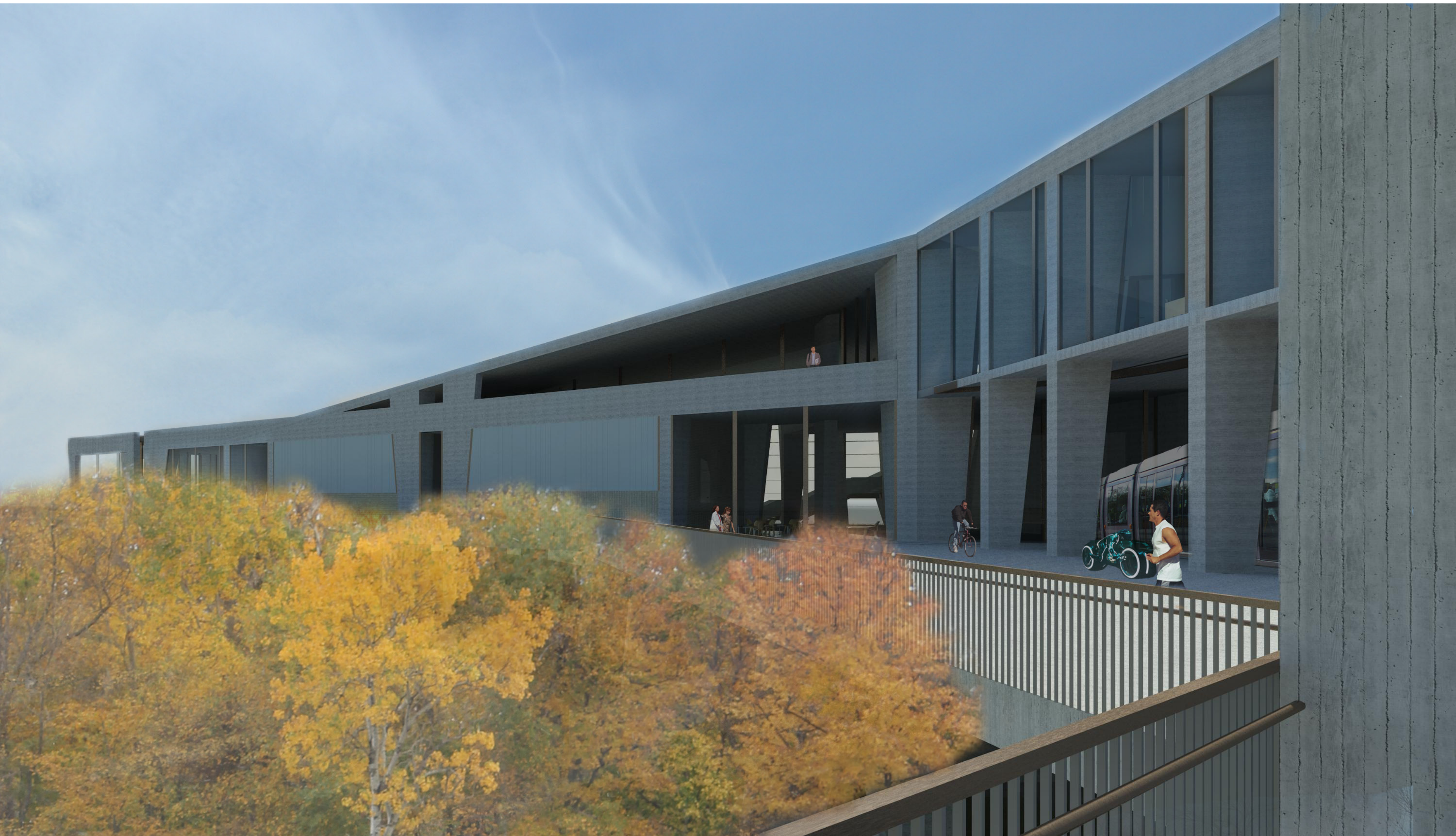
(12)Reception

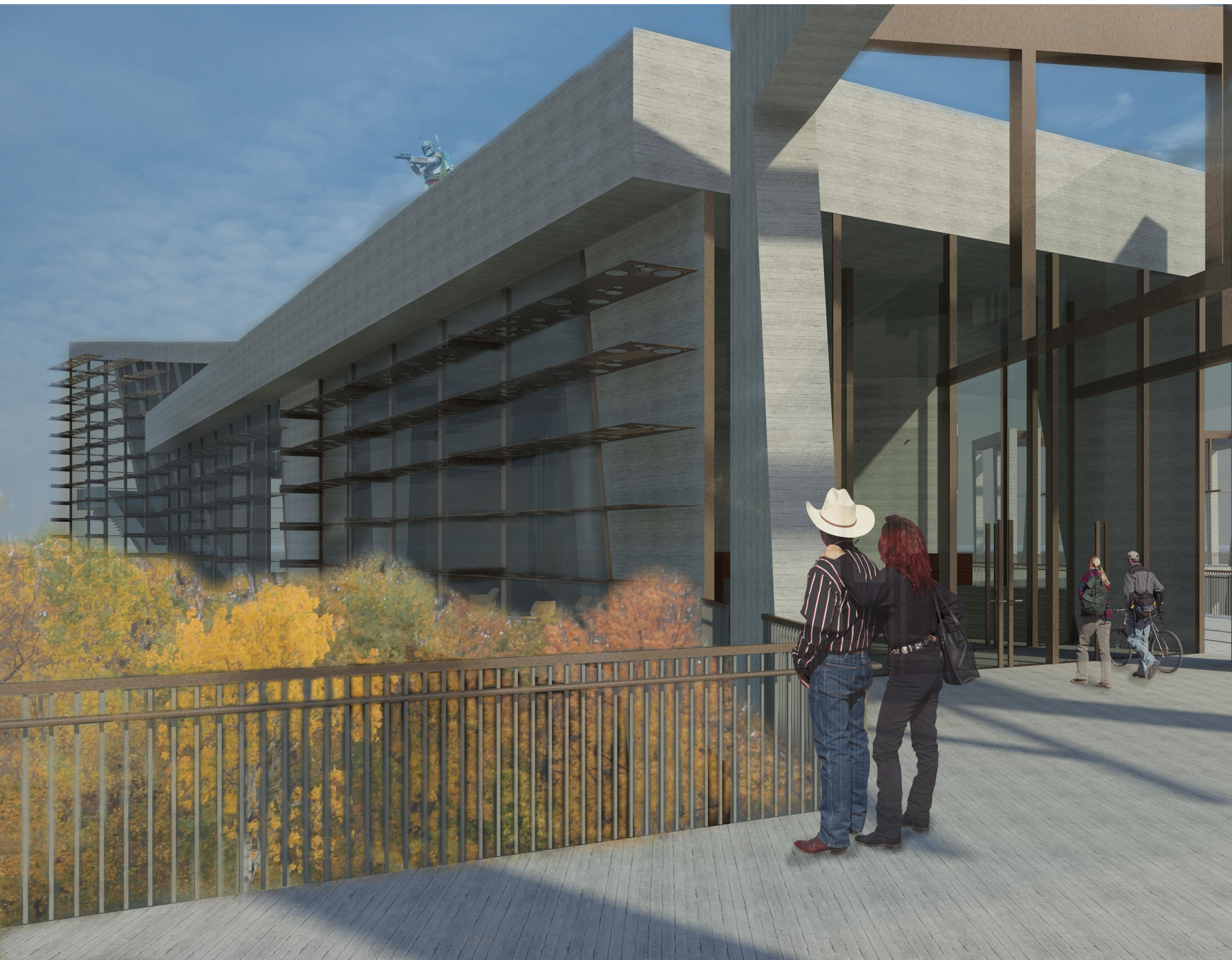
(13)Office

(14)Meeting Space

(15)Kitchen

Scale 1"=16'



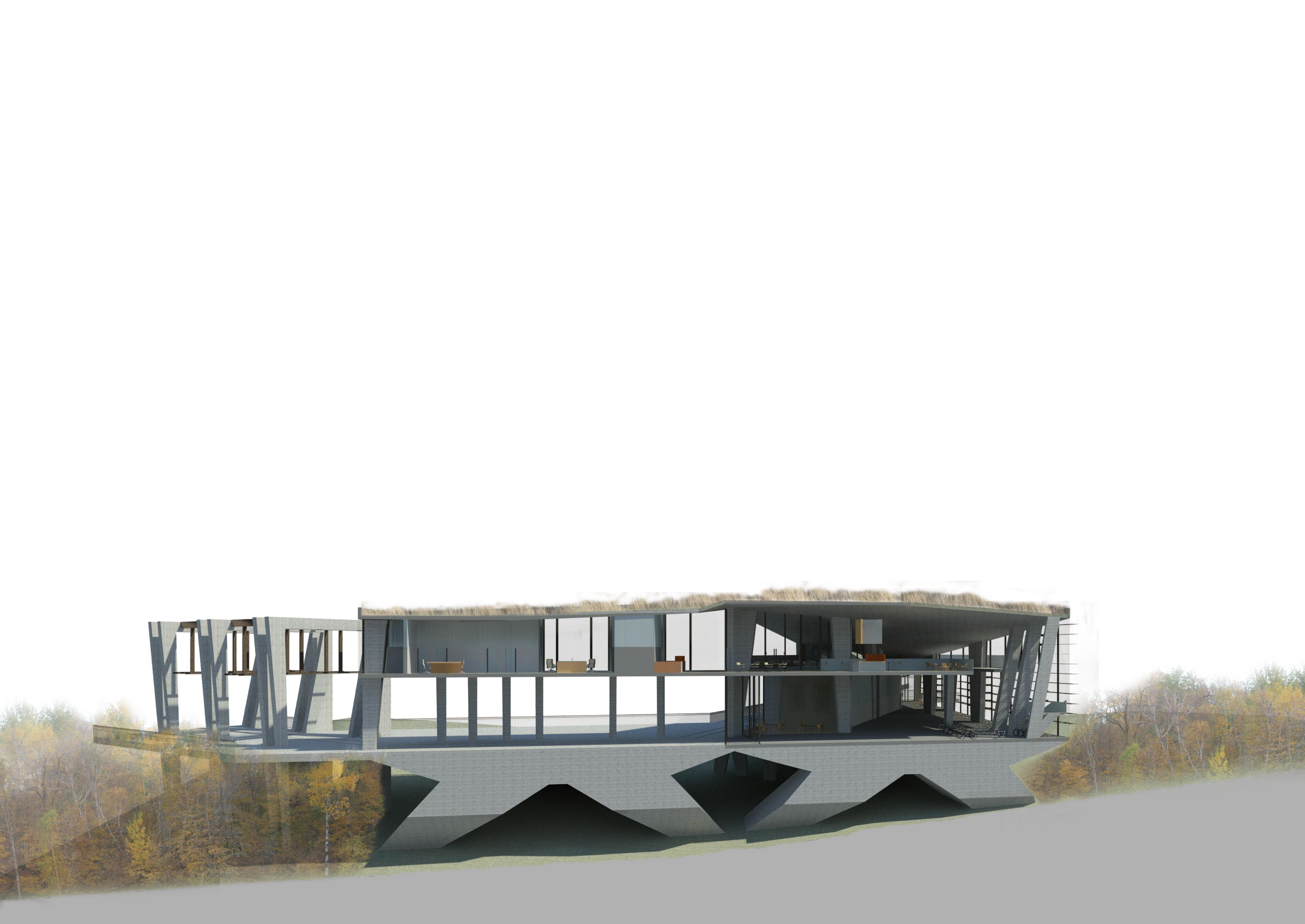


















Today's  
weather  
is  
Sunny



Welcome to the MXC

Destination	Time	Status
STATION 401	10:00	ON TIME
STATION 402	10:05	ON TIME
STATION 403	10:10	ON TIME
STATION 404	10:15	ON TIME
STATION 405	10:20	ON TIME
STATION 406	10:25	ON TIME
STATION 407	10:30	ON TIME
STATION 408	10:35	ON TIME
STATION 409	10:40	ON TIME
STATION 410	10:45	ON TIME

All Departures are on time







