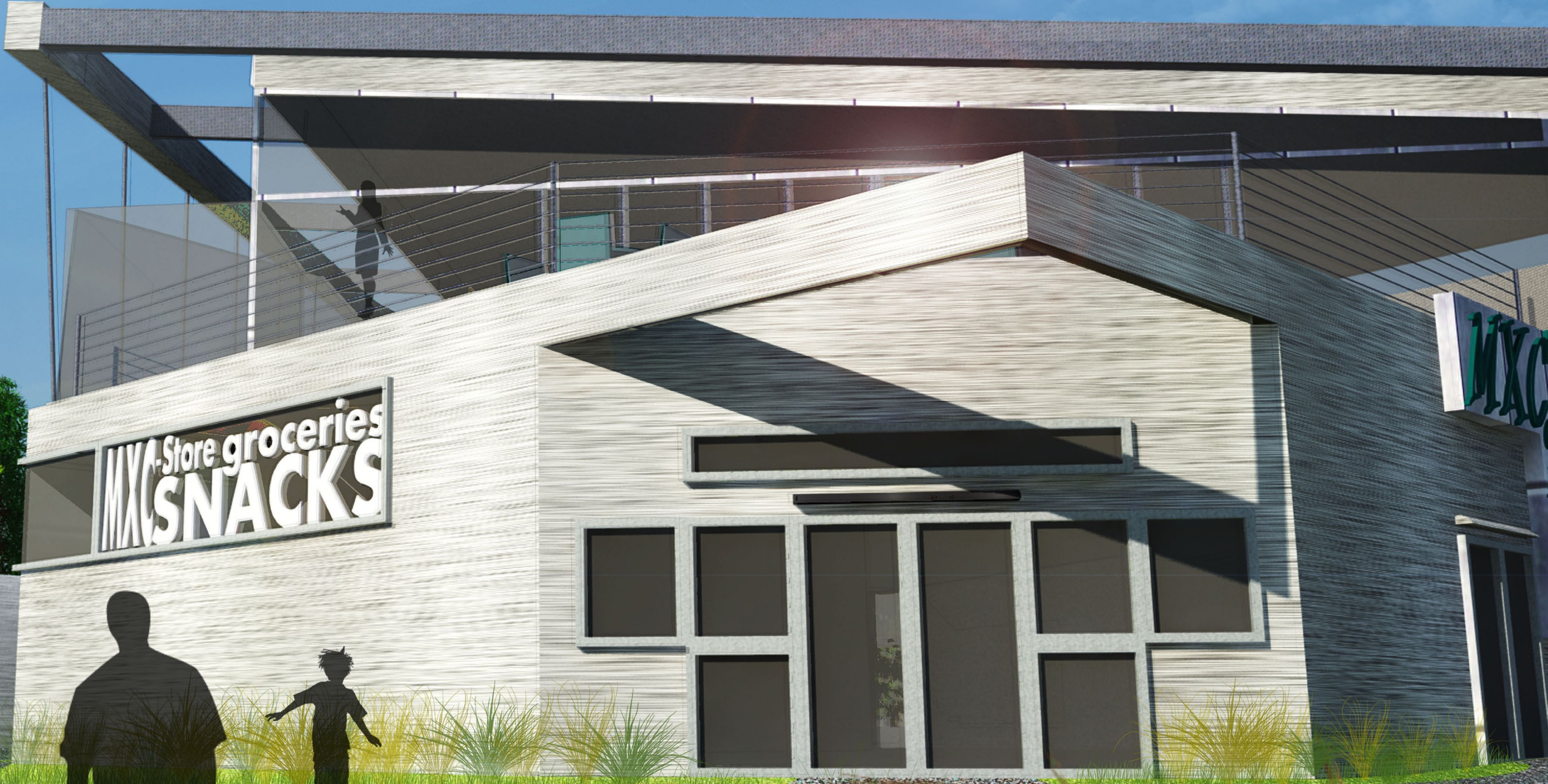
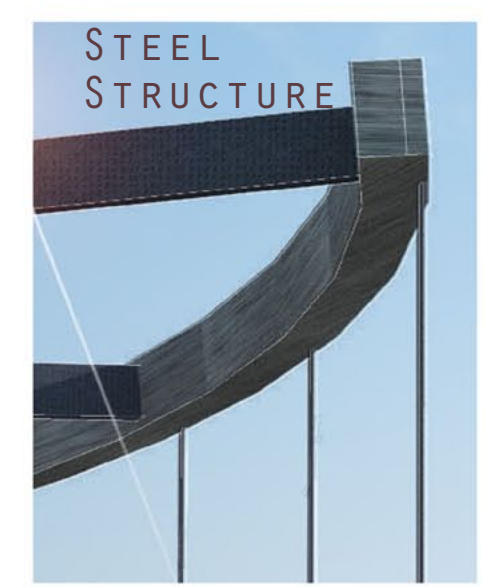
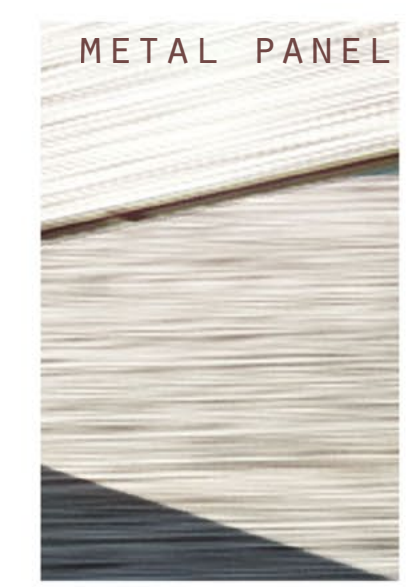


MXC CENTER

A MARKETPLACE FOR
MINNESOTA'S
EXPERIMENTAL CITY



ALISHA OSTEN
ARCH 771
FALL 2011
PROFESSOR URNESS



MATERIAL SELECTION PLAYS A ROLE IN GIVING VISITORS A CHANCE TO MOVE FROM THEIR PRIVATE LIVES TO A VIBRANT & BUSY PLACE. BRUSHED METAL PANELS GIVE A SOLID DEFINITION TO THE SPACE, STEEL COLUMNS AND BEAMS WORK THEIR WAY THROUGH THE SPACE, EVENTUALLY MAKING THEIR WAY TO THE EXTERIOR, AND GLASS BRINGS EVERYONE TOGETHER IN THE CENTER.

THE MINNESOTA EXPERIMENTAL CITY PROVIDES A GREAT OPPORTUNITY FOR A MARKETPLACE.

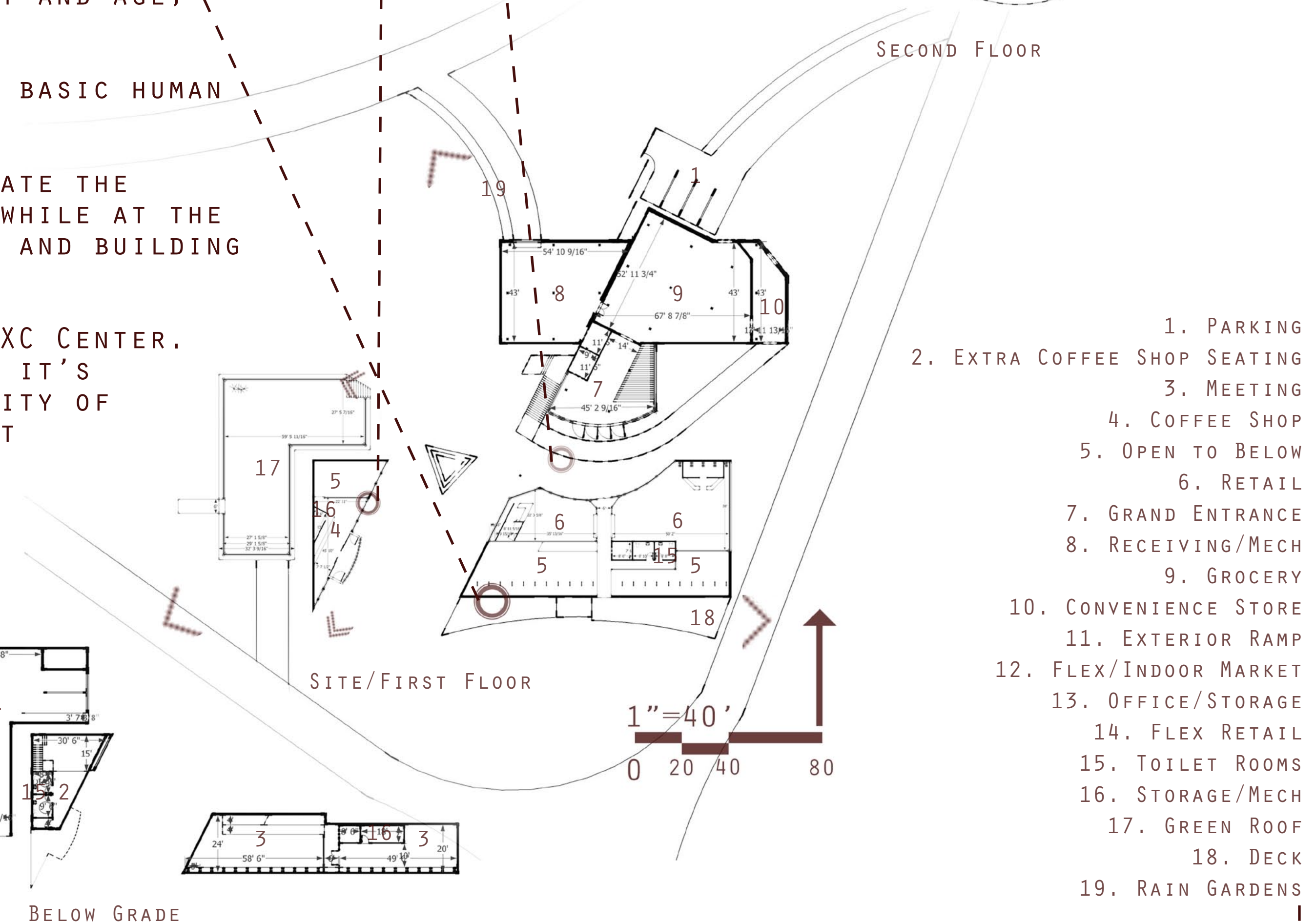
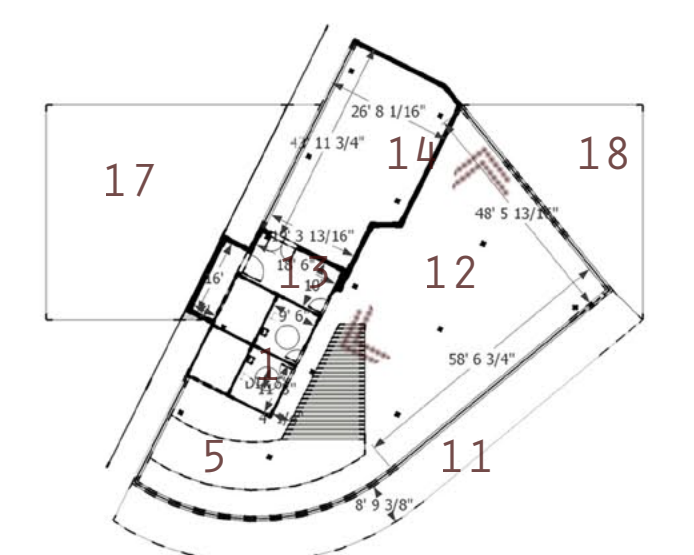
WHY DO PEOPLE SHOP? PHYSICALLY SHOP, I MEAN. CERTAINLY NOT FOR CONVENIENCE. NOT IN THIS DAY AND AGE, AND CERTAINLY NOT IN THE MXC.

PEOPLE SHOP TO FULFILL THE BASIC HUMAN NEED FOR INTERACTION.

SO, HOW THEN DO WE FACILITATE THE FUNDAMENTAL NEED TO SOCIALIZE WHILE AT THE SAME TIME RESPECTING THE SITE, AND BUILDING INTO THE FUTURE?

THE SOLUTION LIES IN THE MXC CENTER. A BUILDING DESIGNED TO RESPECT IT'S PLACE, IN THIS CASE, A RURAL CITY OF THE FUTURE, BRING IN THE LATEST TRENDS IN RETAIL AND INFORMAL EDUCATION, AND OF COURSE, EMPLOY THE MOST ADVANCED MATERIALS AND SYSTEMS.

WELCOME TO THE MXC!

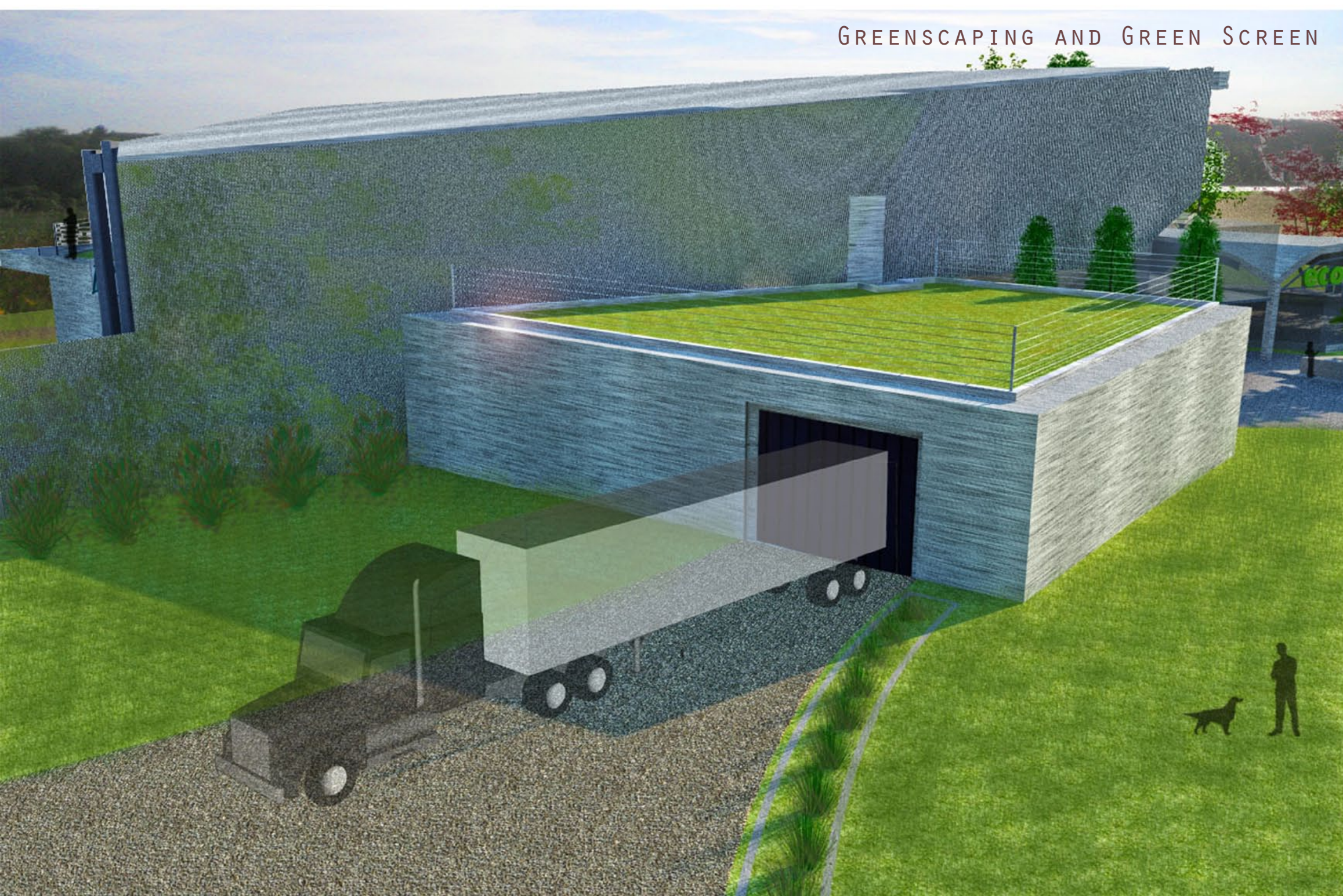


BIRD'S EYE LOOKING NORTH WEST

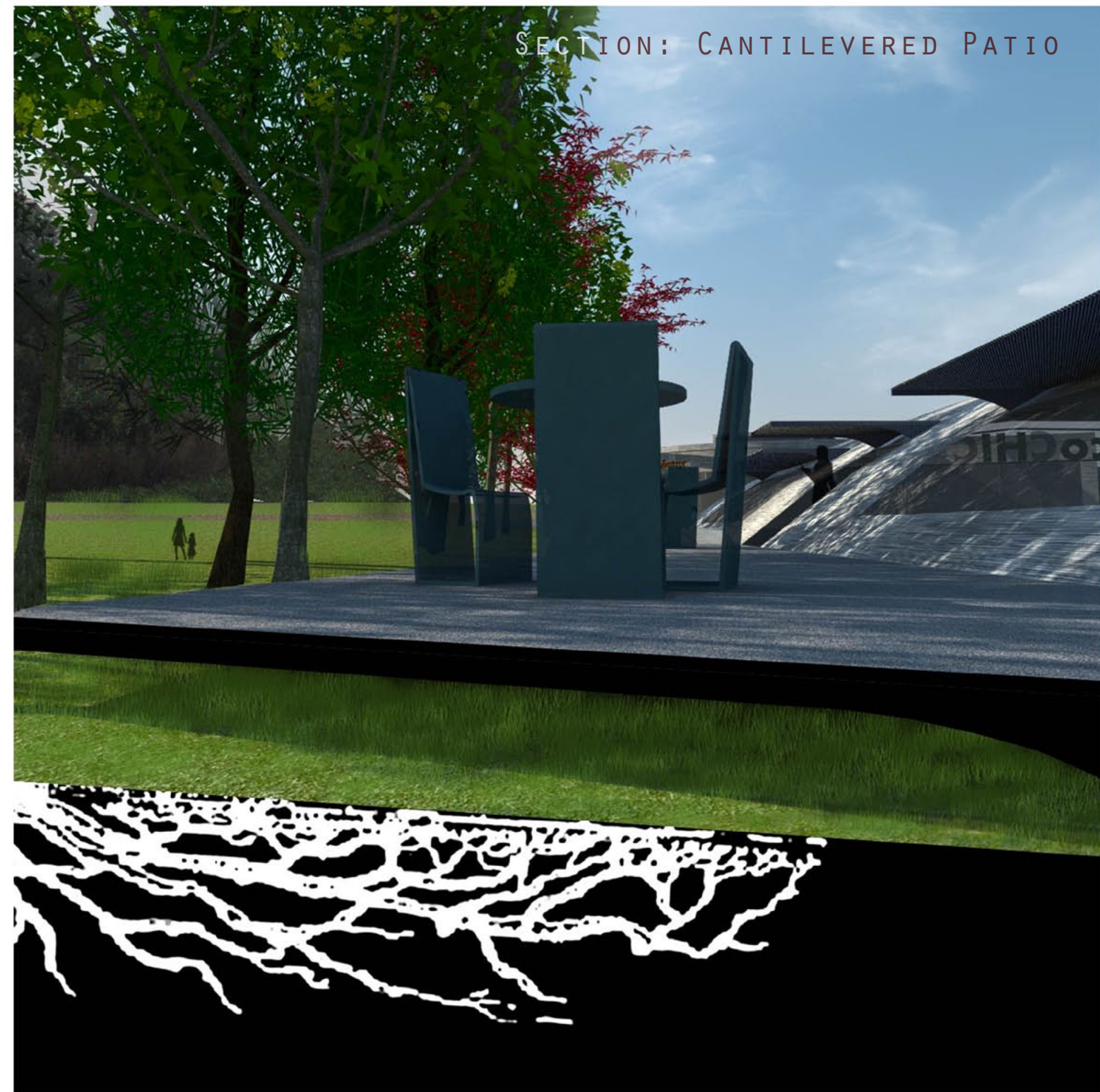


TOP: SECTION CUT LOOKING NORTH
BOTTOM: SECTION CUT LOOKING WEST

LIVING IN THE FUTURE, OPPORTUNITIES PRESENT THEMSELVES FOR US TO TAKE ADVANTAGE OF, FOR US TO USE METHODS WE HAD PREVIOUSLY BEEN UNAWARE OF. TRADITIONAL GREENSCAPING, RAIN GARDENS, AND GREEN ROOFS ARE UTILIZED. ADVANTAGES THAT THE MXC CENTER HAS OVER TRADITIONAL "GREEN DESIGN" ARE: GREEN SCREENS FOR PROTECTION OF NORTH WINDS WHILE STILL DAYLIGHTING HEAVILY USED SPACES, PATIO STRUCTURE CANTILEVERING OVER TREE ROOTS SO AS TO BURROW THE USER DEEPER INTO THE SITE, AND A COMFORTABLE BUS STOP LIMITING THE NEED FOR PERSONAL PARKING.



GREENSCAPING AND GREEN SCREEN

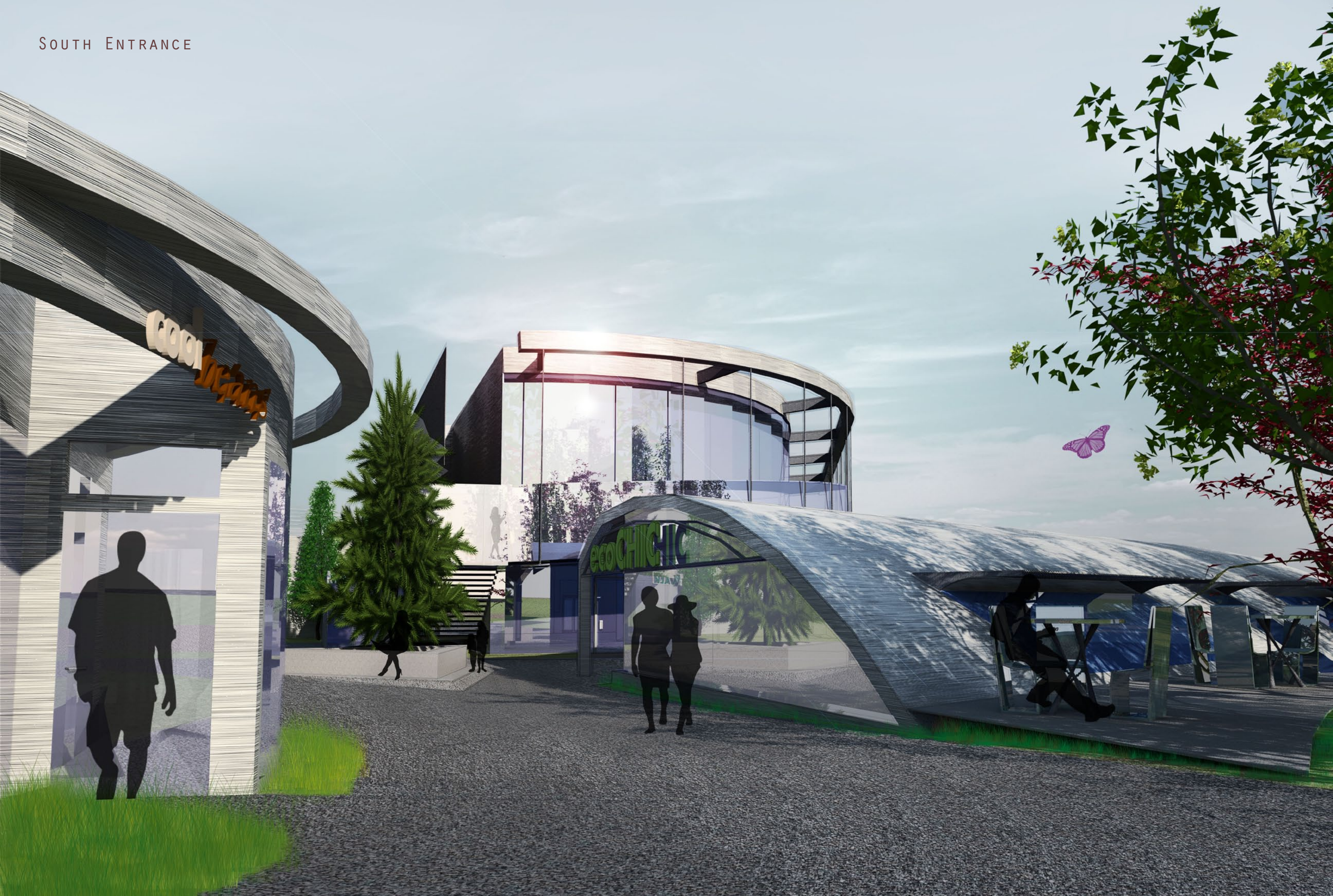


SECTION: CANTILEVERED PATIO

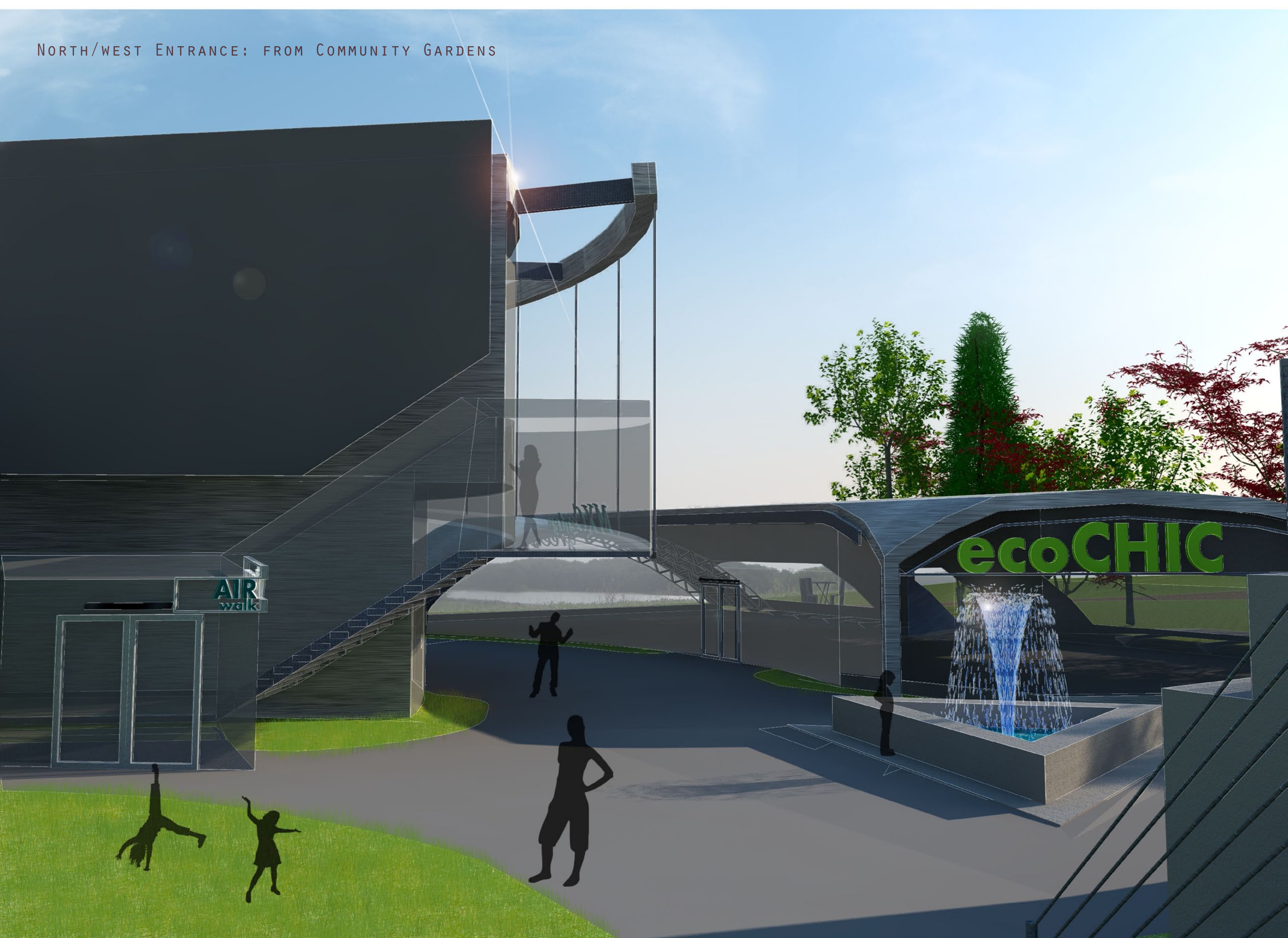


COMFORTABLE TRANSPORTATION STOP WITH COMMUNITY GARDENS ABOVE

SOUTH ENTRANCE



NORTH/WEST ENTRANCE: FROM COMMUNITY GARDENS



INDOOR FARMER'S MARKET: SECOND FLOOR MAIN BUILDING



SECTION PERSPECTIVE OF MAIN BUILDING, LOOKING SOUTH WEST



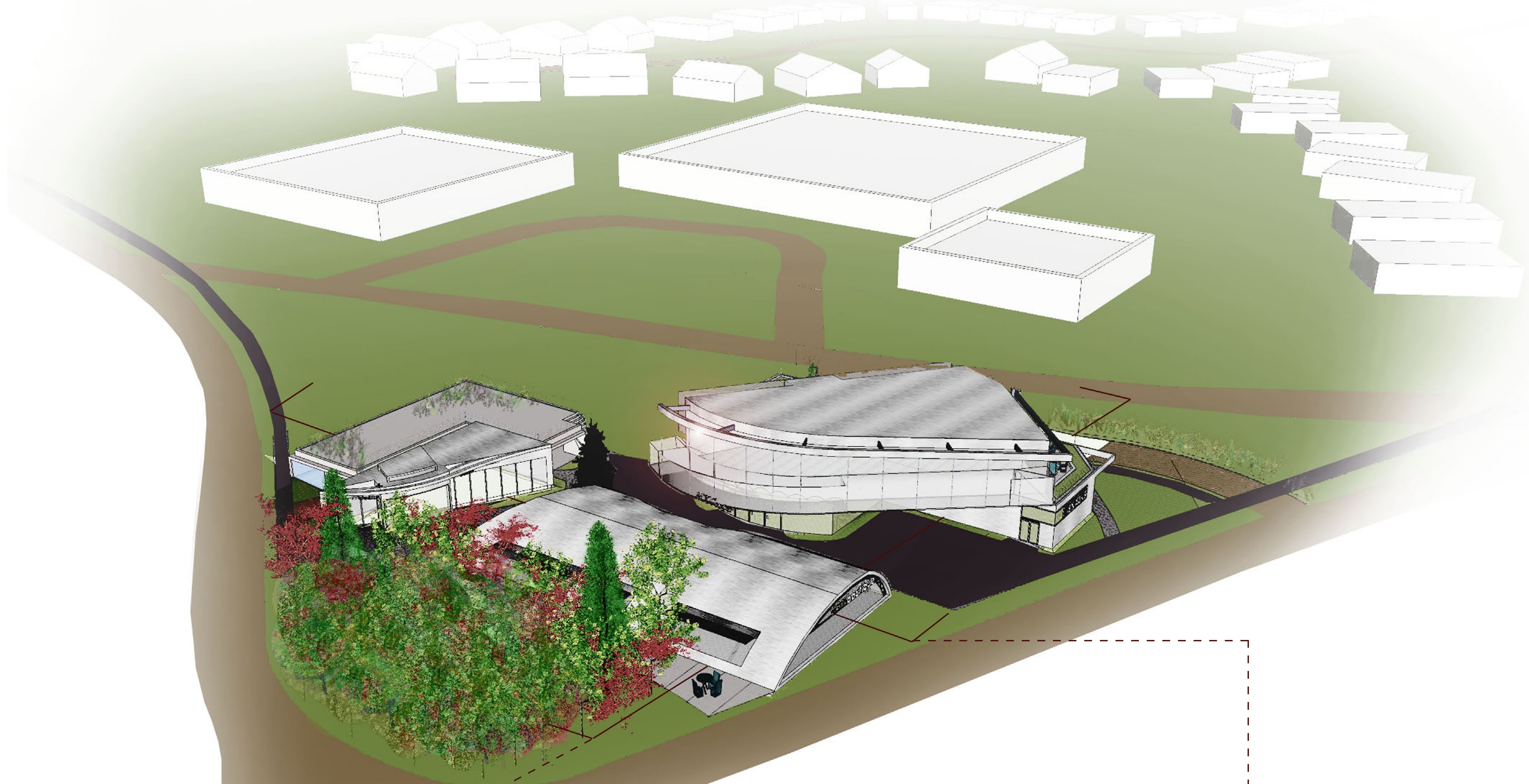
MXC CENTER



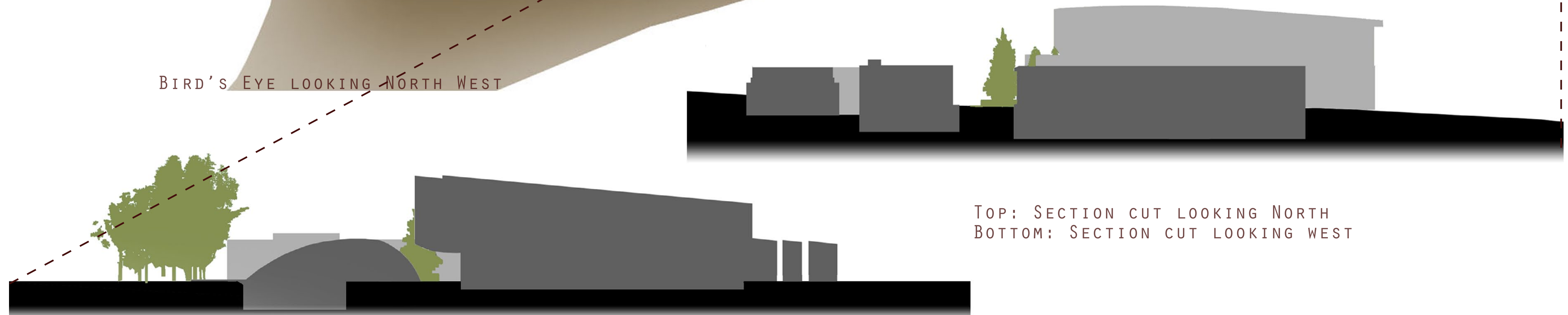
MXC-Store groceries
SNACKS

green boutique

MXC



BIRD'S EYE LOOKING NORTH WEST



TOP: SECTION CUT LOOKING NORTH
BOTTOM: SECTION CUT LOOKING WEST



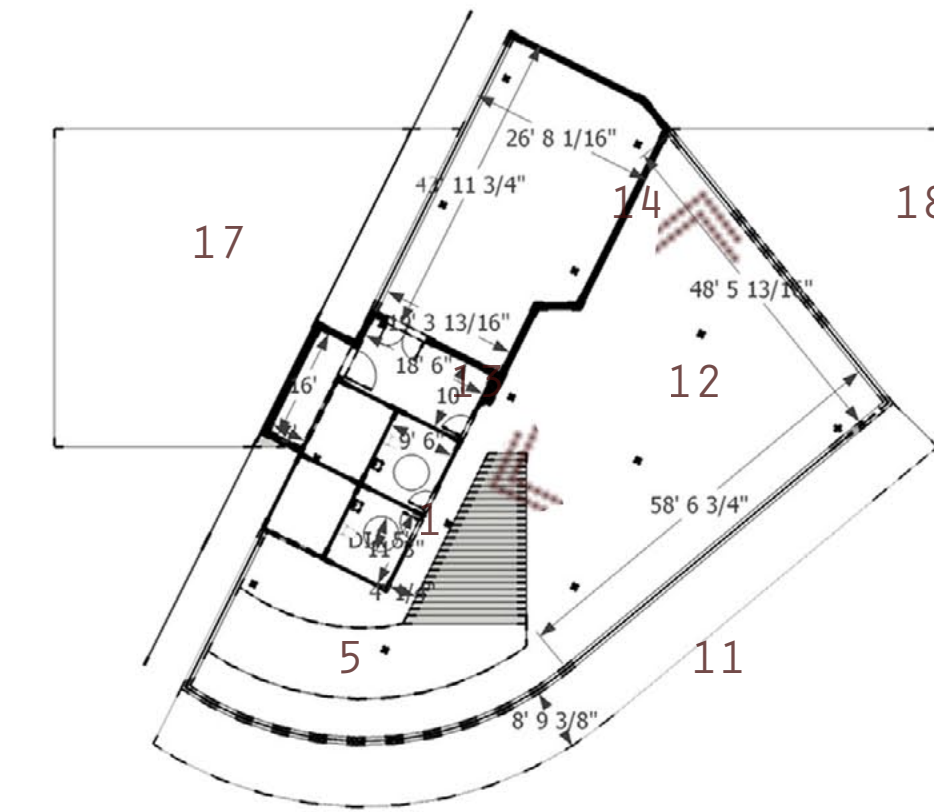
METAL PANEL



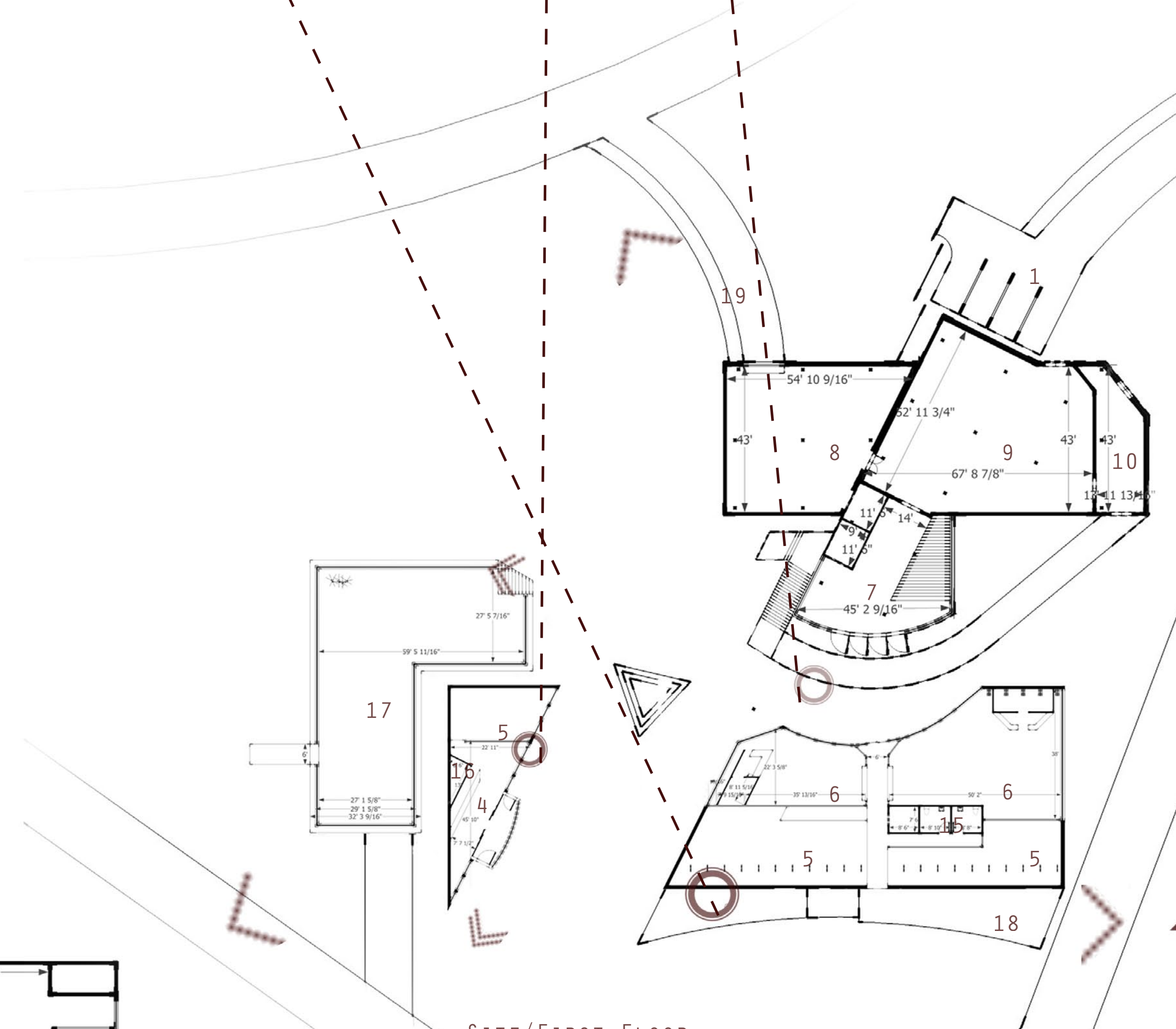
STEEL STRUCTURE



STOREFRONT GLASS

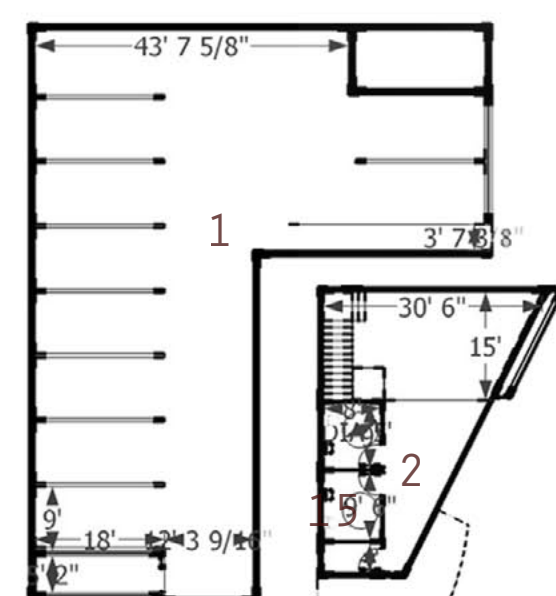


SECOND FLOOR

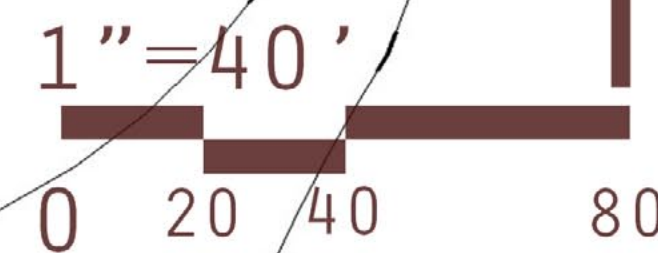
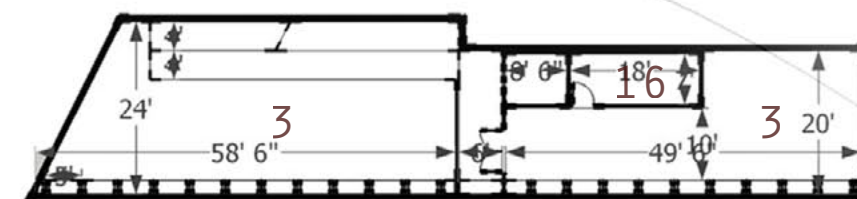


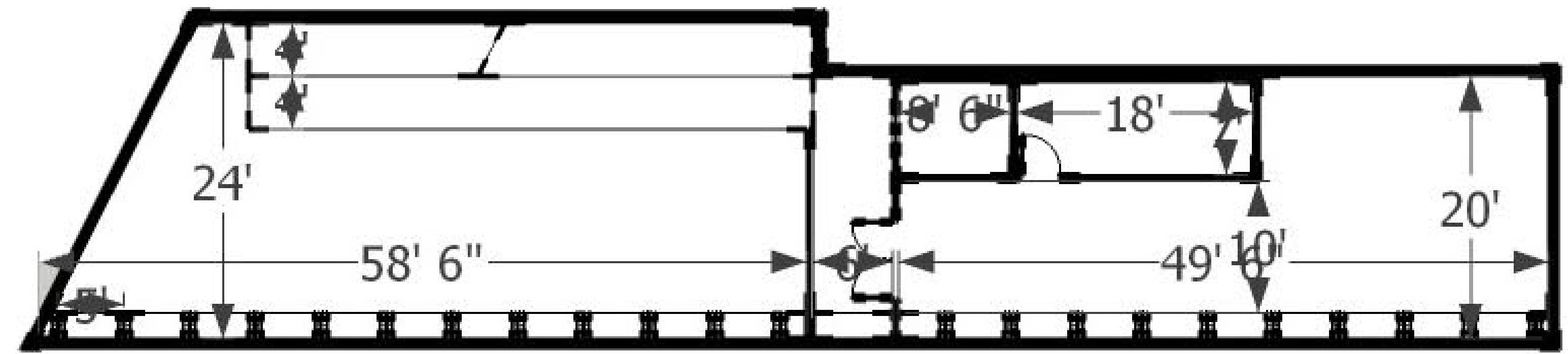
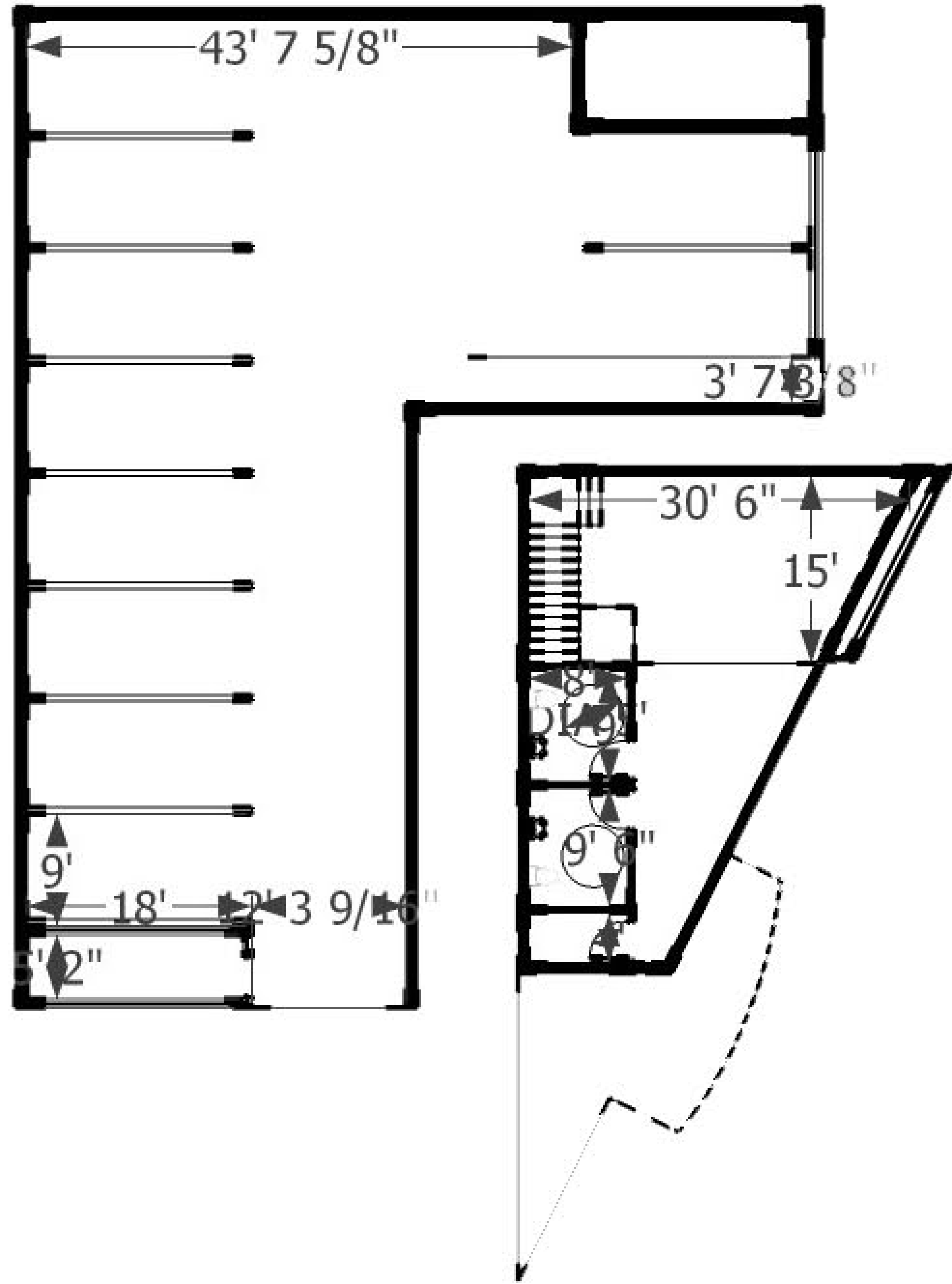
SITE/FIRST FLOOR

- 1. PARKING
- 2. EXTRA COFFEE SHOP SEATING
- 3. MEETING
- 4. COFFEE SHOP
- 5. OPEN TO BELOW
- 6. RETAIL
- 7. GRAND ENTRANCE
- 8. RECEIVING/MECH
- 9. GROCERY
- 10. CONVENIENCE STORE
- 11. EXTERIOR RAMP
- 12. FLEX/INDOOR MARKET
- 13. OFFICE/STORAGE
- 14. FLEX RETAIL
- 15. TOILET ROOMS
- 16. STORAGE/MECH
- 17. GREEN ROOF
- 18. DECK
- 19. RAIN GARDENS

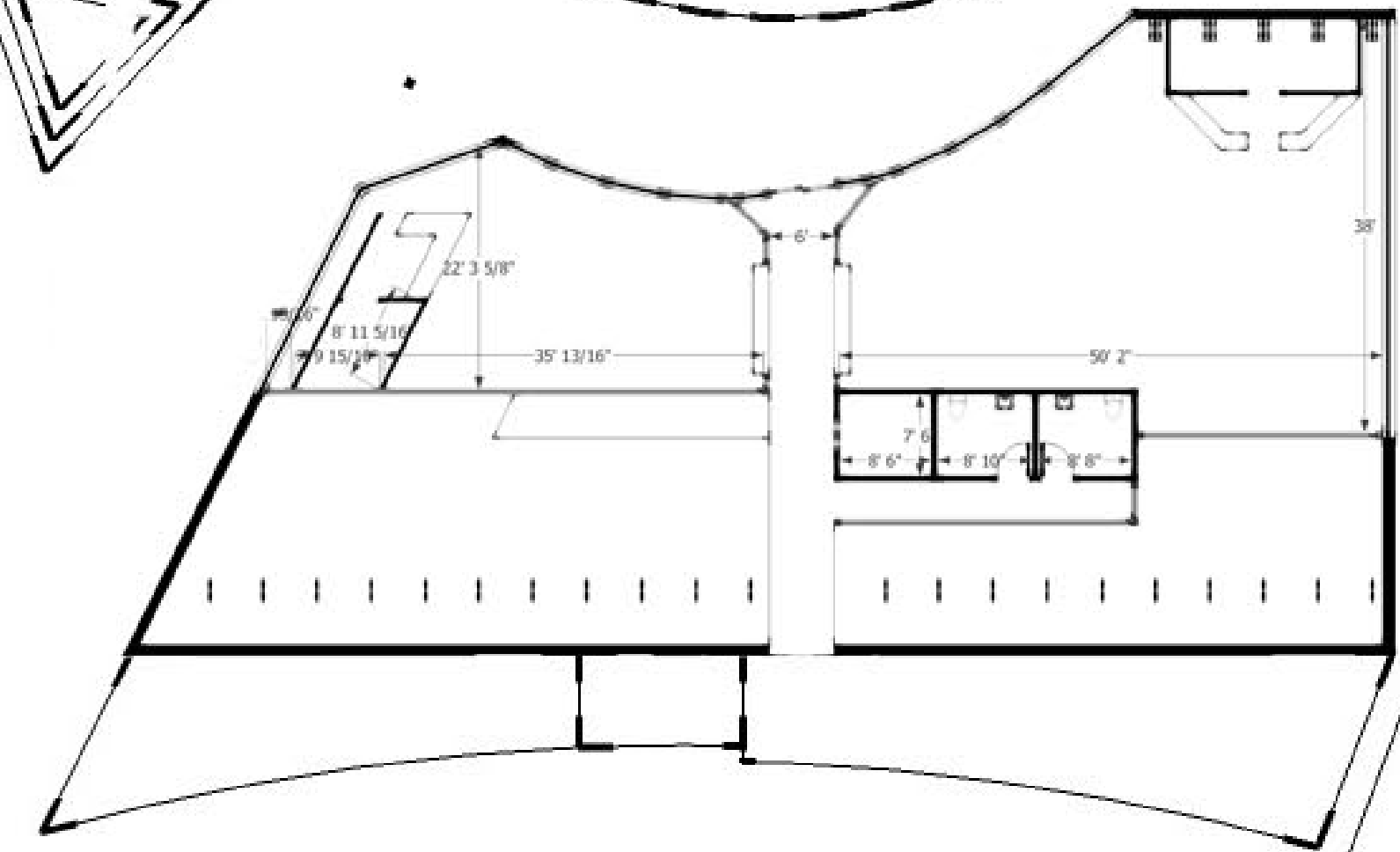
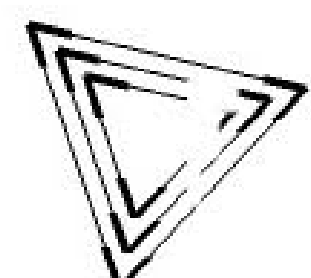
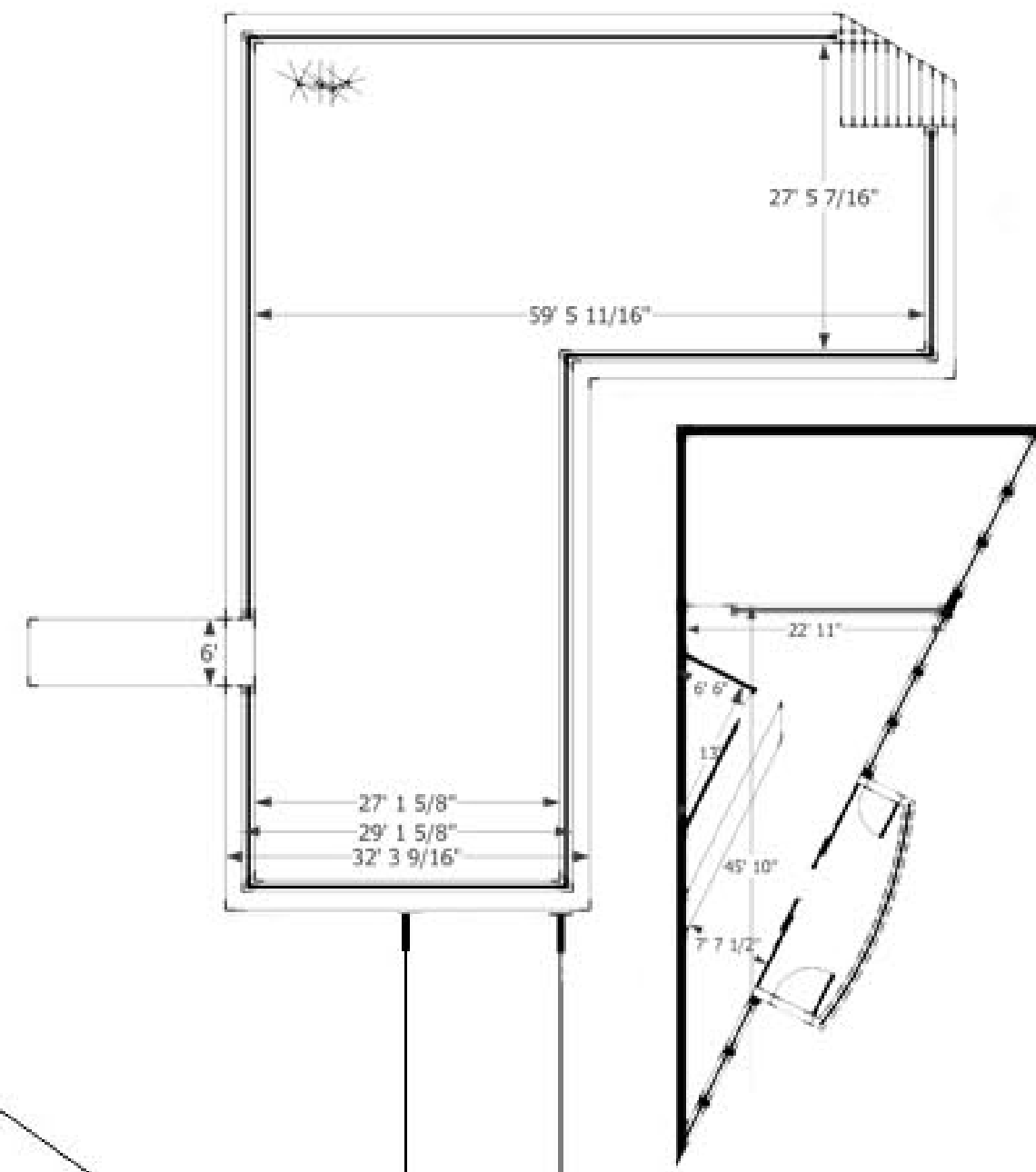
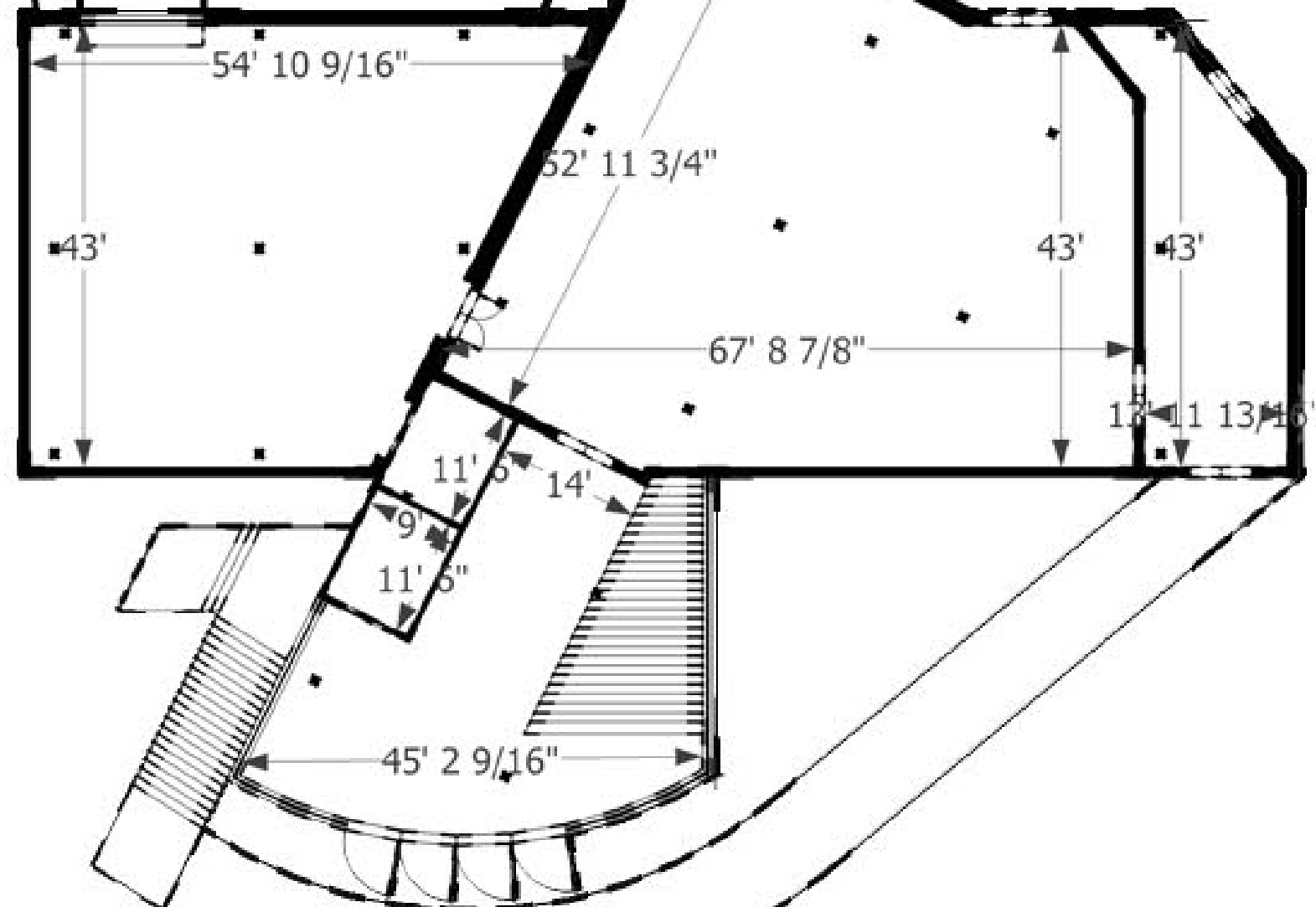
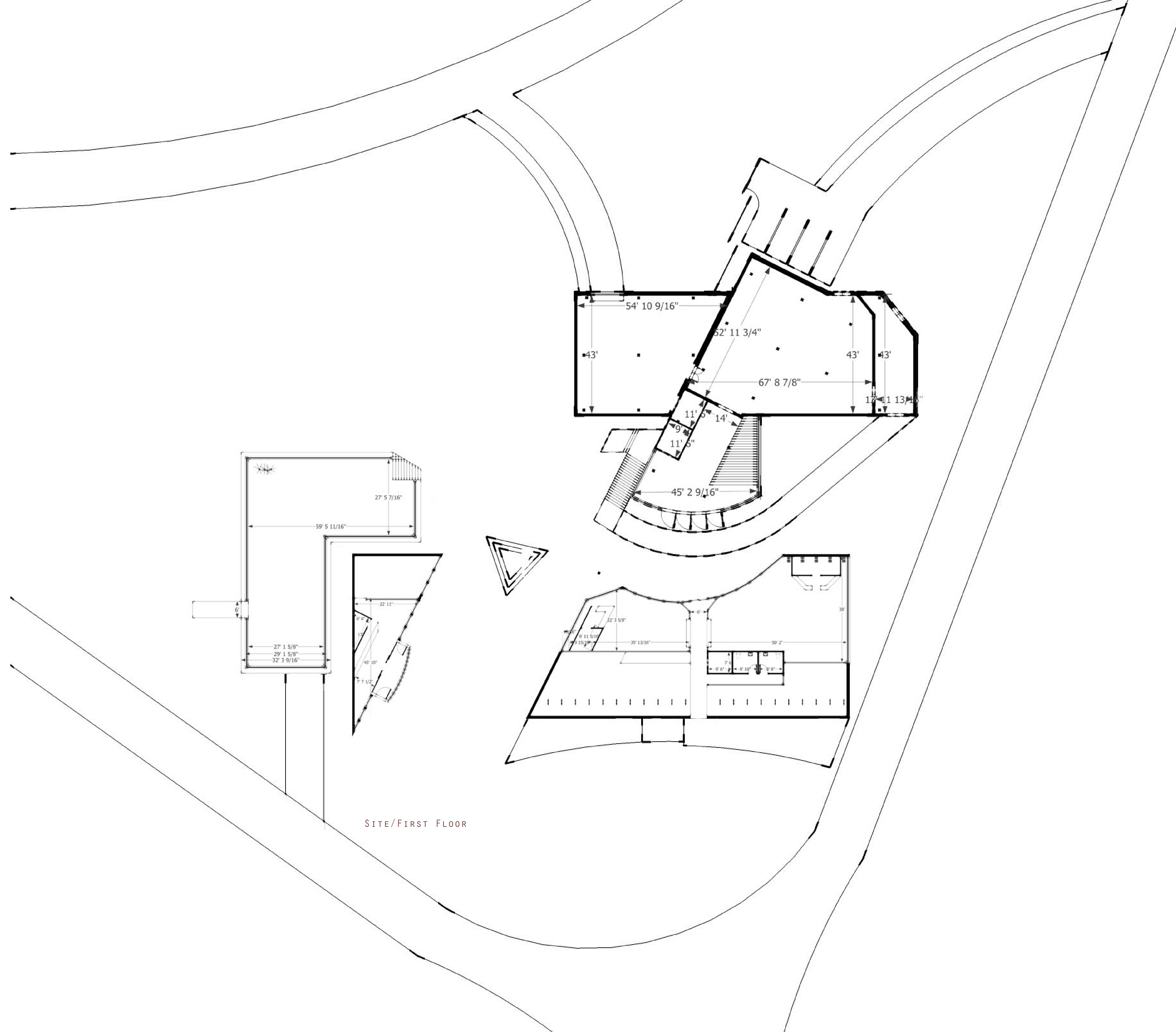


BELOW GRADE

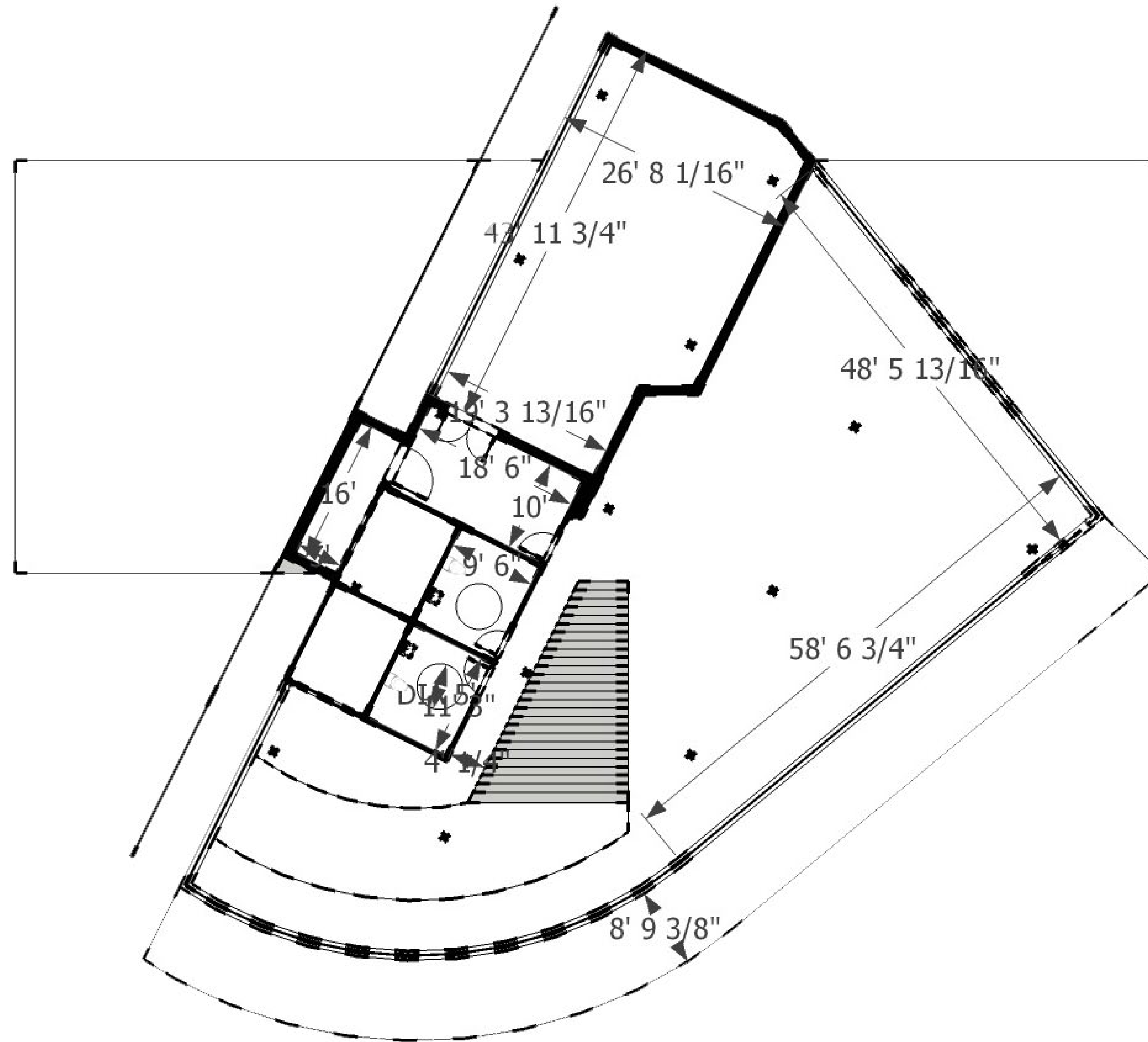




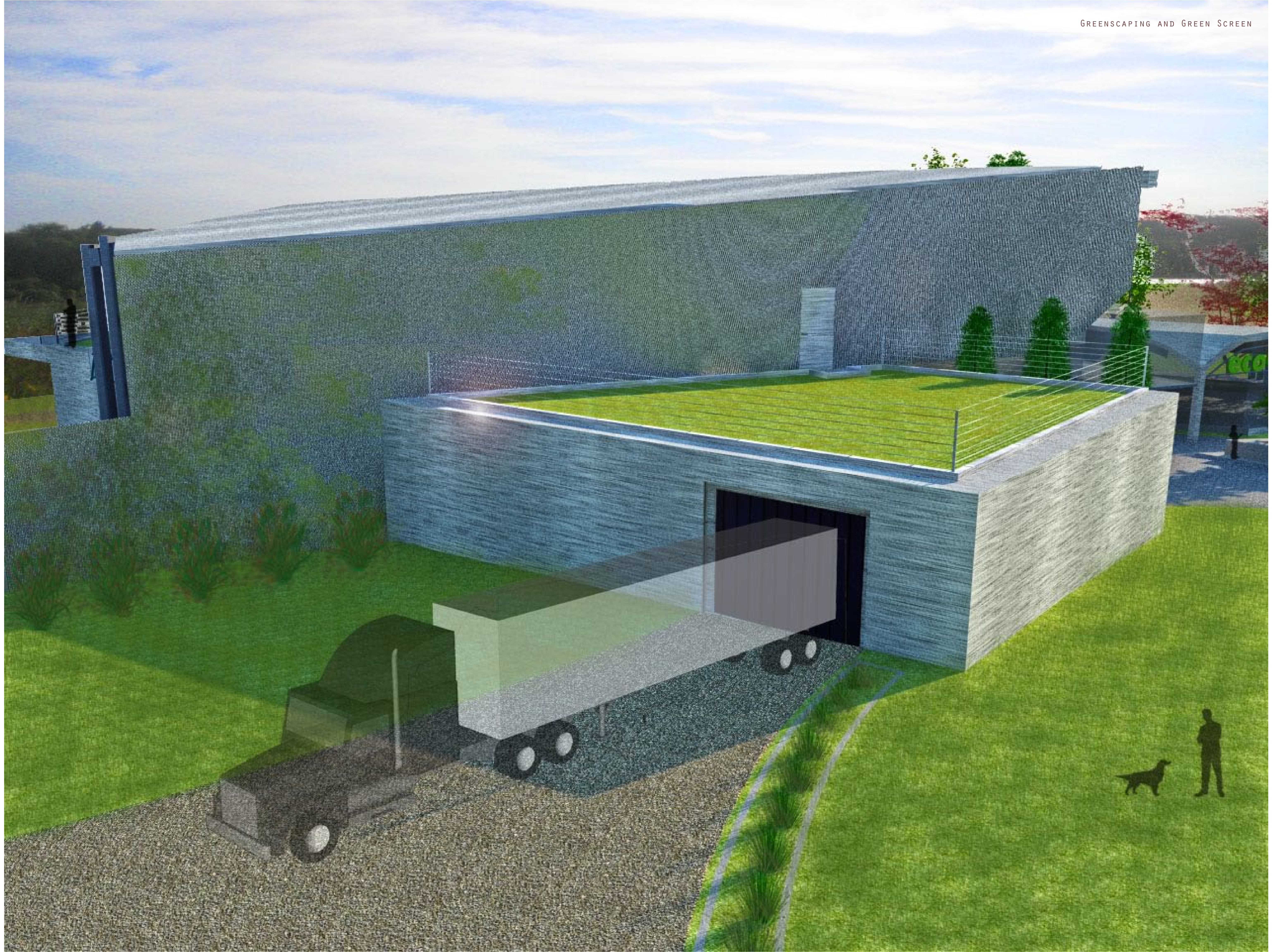
BELOW GRADE

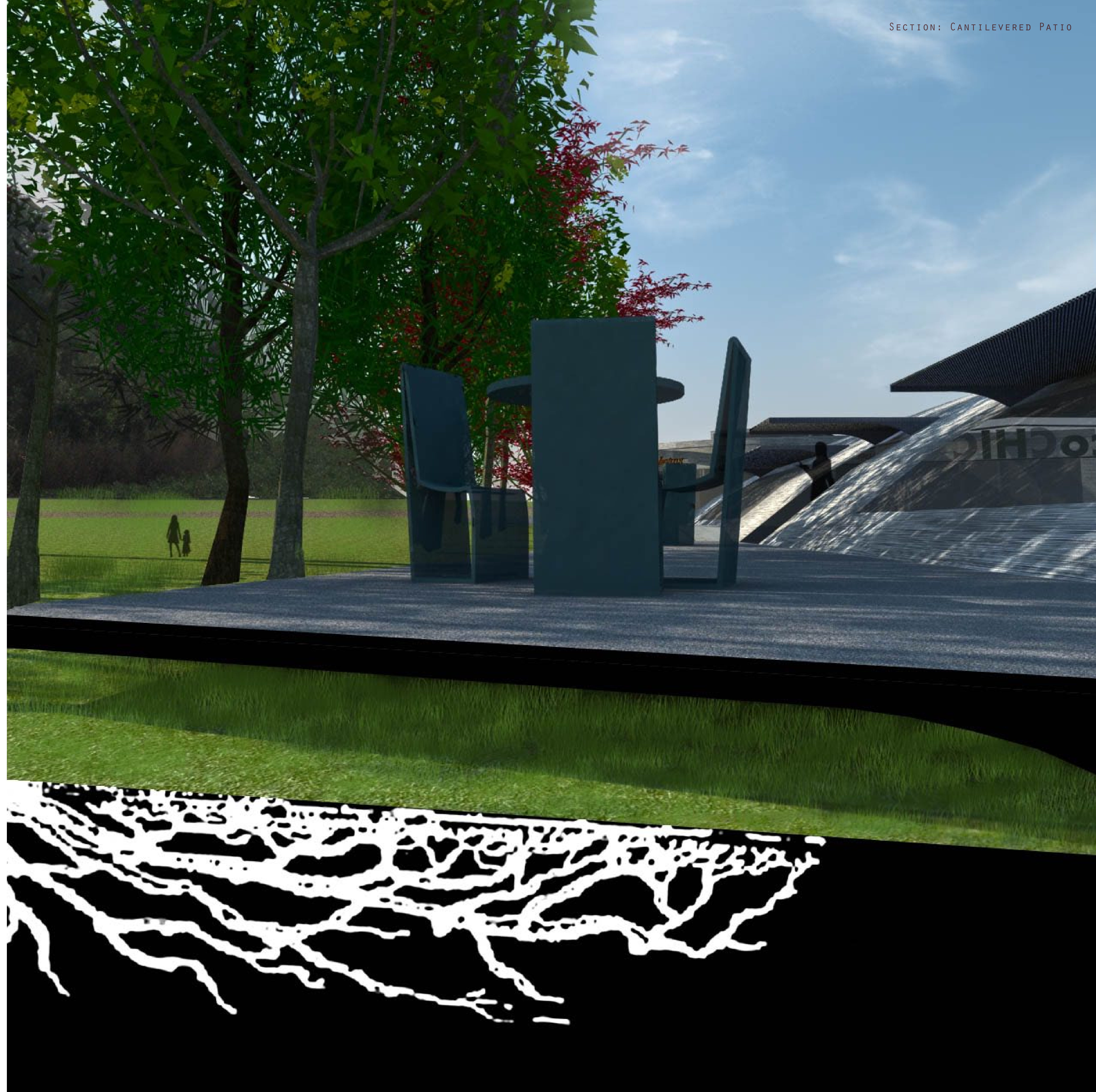


SITE/FIRST FLOOR



SECOND FLOOR

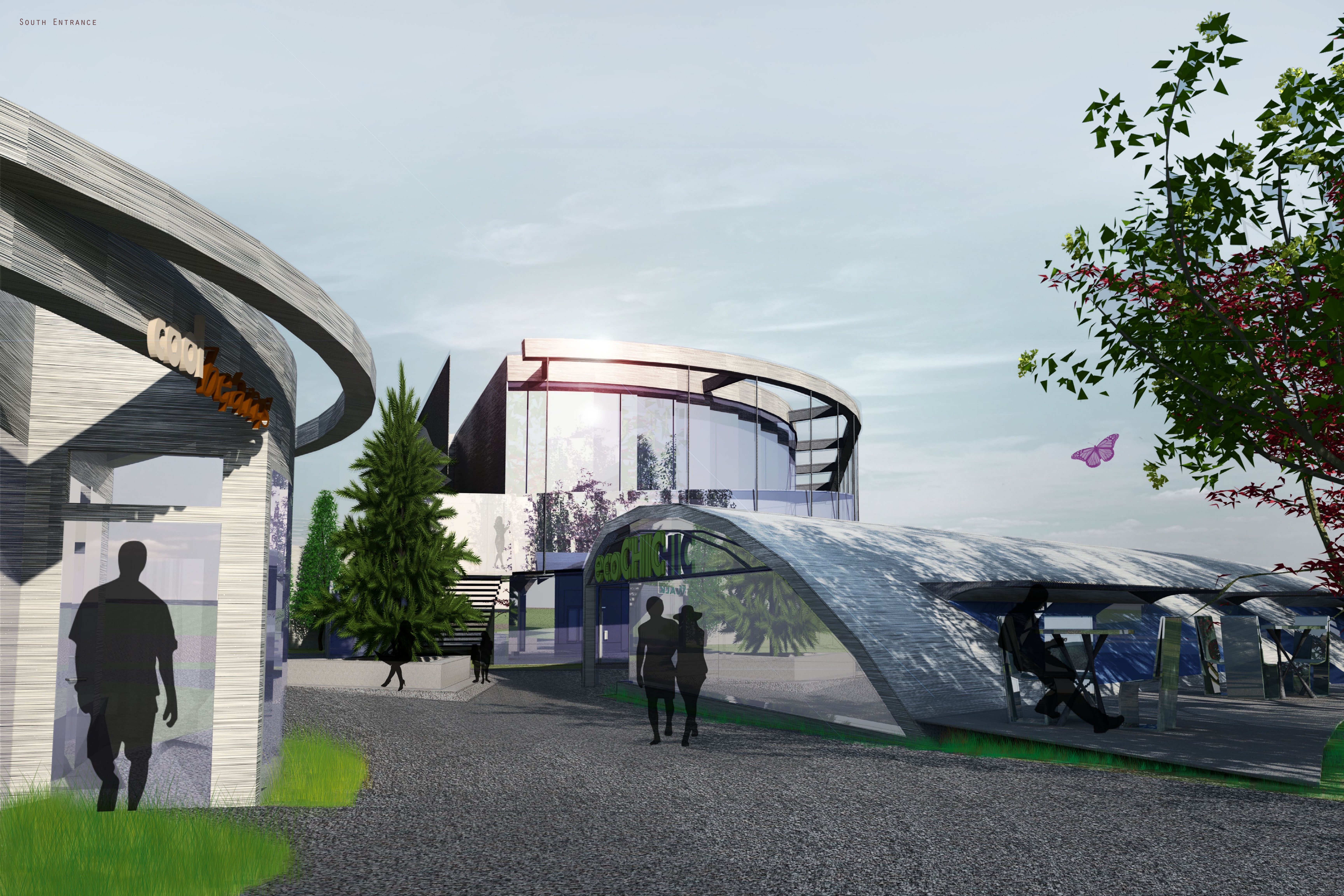


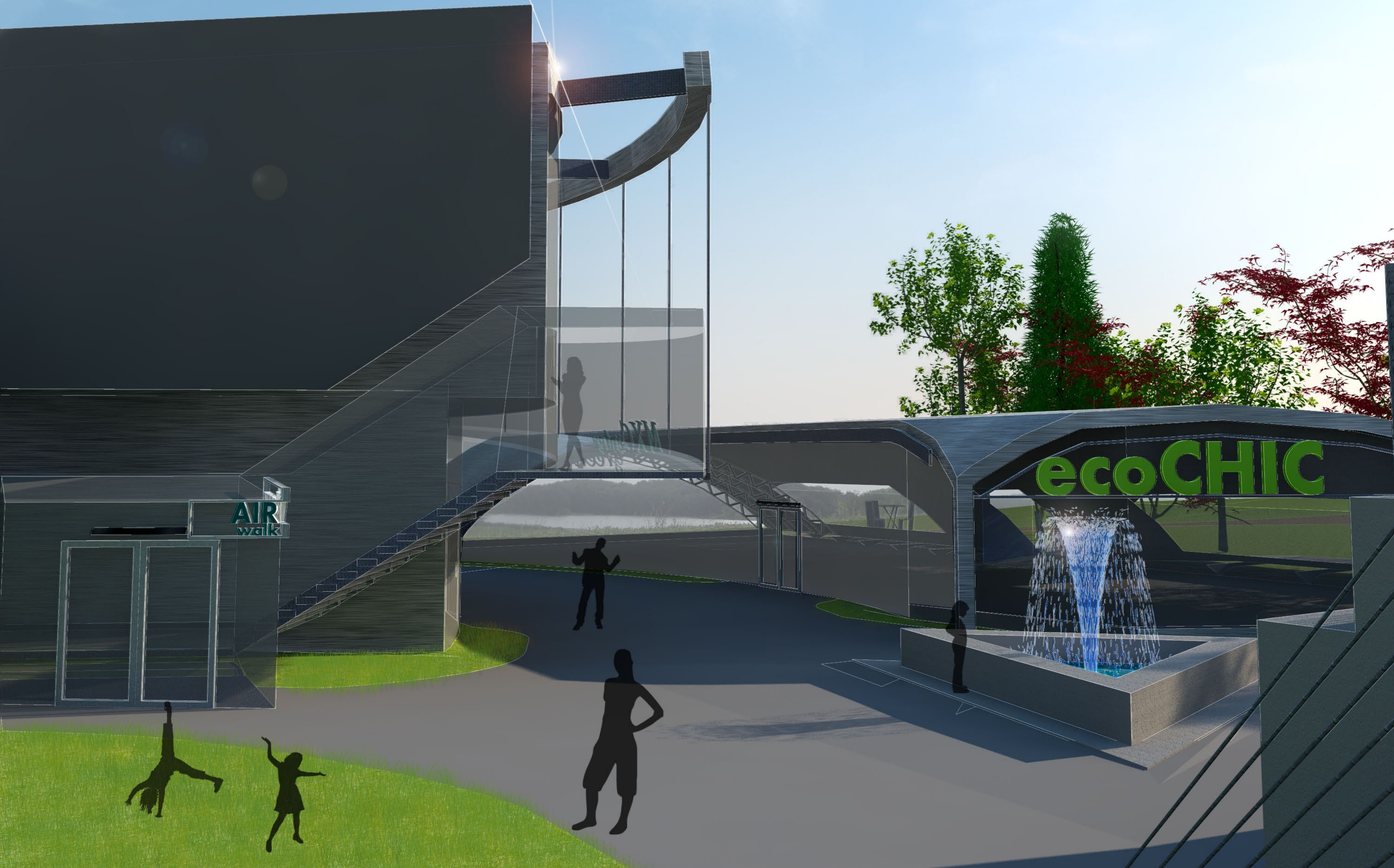




Bus Stop

Parking







SECTION PERSPECTIVE OF MAIN BUILDING, LOOKING SOUTH WEST

