

ARCH 771

**FARGO CITY CENTER
BY RICHARD WRIGHT**

RESEARCH TOPIC

Mass Transportation The Streetcar

Faster and Cheaper way to travel

Brings higher levels of pedestrian traffic

- More shopping
- More storefront
- More \$\$\$

Eliminates Parking (time, space, money, and traffic)

Reliability (fast & available)

- Portland Streetcars run every 10 to 14 mins per stop
- Some run as early as 5am to as late as 2am in European Countries

Lower traffic congestion

Lower CO2 emissions (cars produce 50% CO2 emissions)

Less parking

Safer (the National Safety Council estimated that riding the bus is 170% safer than driving a car)

Higher property values (proximity to public transit increases the value of your home)

Strengthens communities (share common nodes and brings people together)

Decreases the need for roads & road repairs

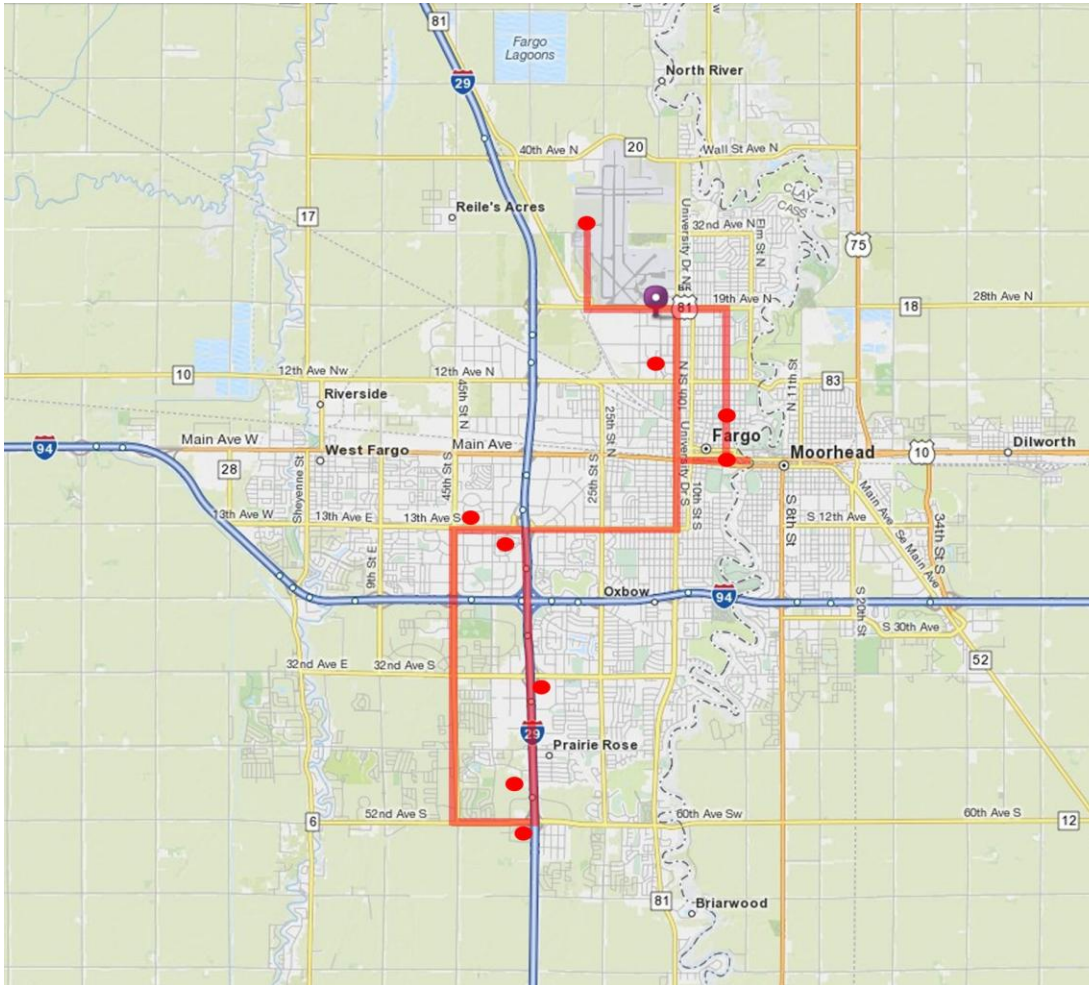
Increased Pedestrian Traffic



Picture from <http://www.fargo-history.com/transportation/streetcars.htm>

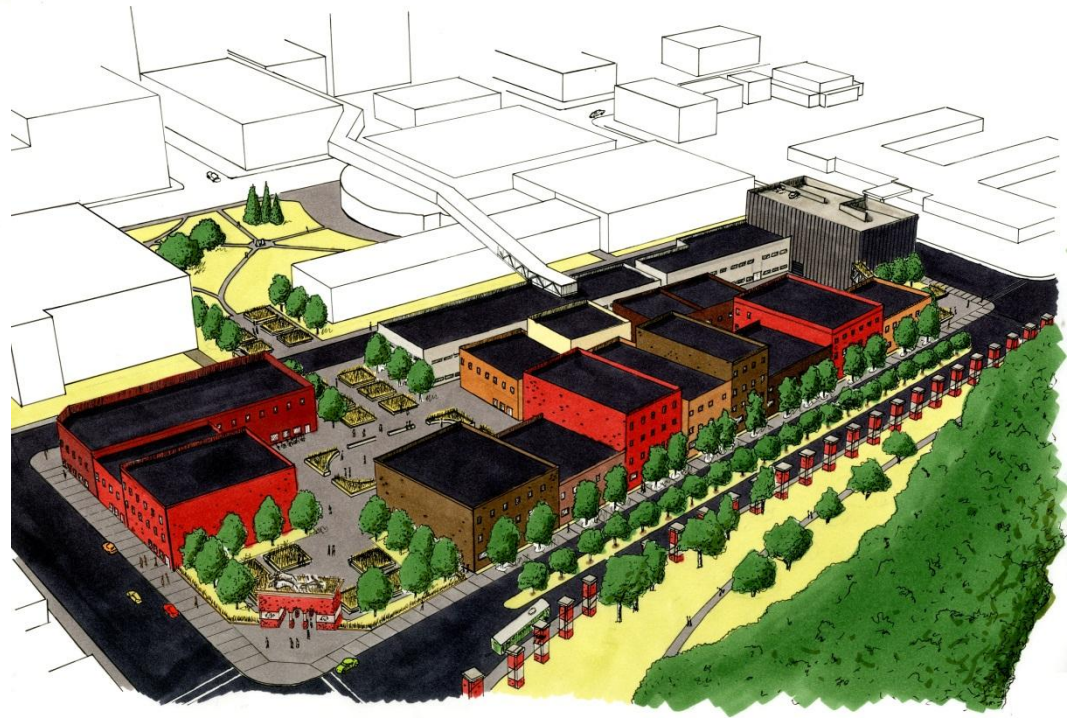
RESEARCH TOPIC

Mass Transportation The Streetcar

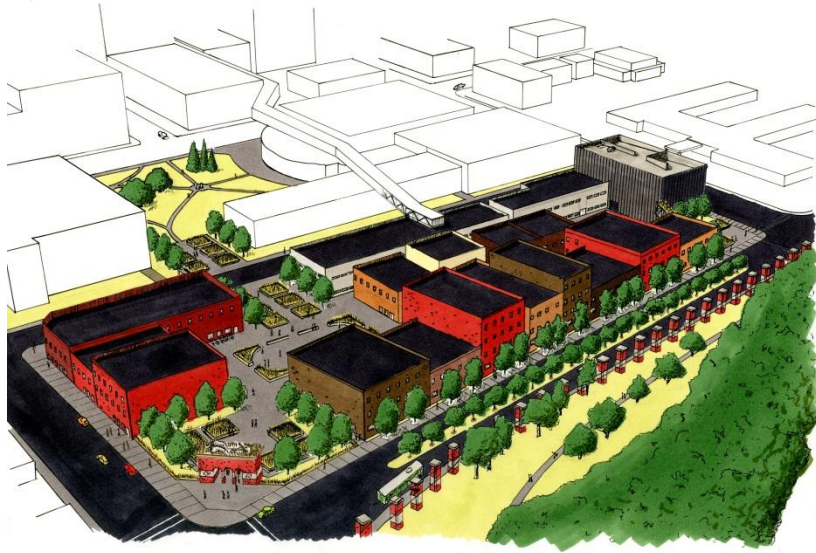


The streetcar would be a great addition to Fargo. The need for adequate public transit needs to be pushed to move further away from the demand for the car. The streetcar line was made in accordance with points of interests and accessibility. The main hub would be located one block south of the city center on Main Avenue.

CITY CENTER DESIGN



CITY CENTER DESIGN



The city center was designed around the idea of combining shopping and a ice ring for maximum use during both the winter months and the summer months. Walkability was key in the design to keep the pedestrians in the vicinity to shop not just one store but multiple stores in one visit. The site gave access to the driver to park nearby yet have the ability to connect the pedestrian to all the surrounding buildings and green spaces. A greenway connects the parks from the east and the west.

The landscaping came from relating back to the original prairie grasses that grew on the land before the settlement of Fargo. The idea of reverencing the past of the site in an urban setting grew to establishing a museum for Fargo. The museum being the central focus of the courtyard.

FARGO MUSEUM

PARTI

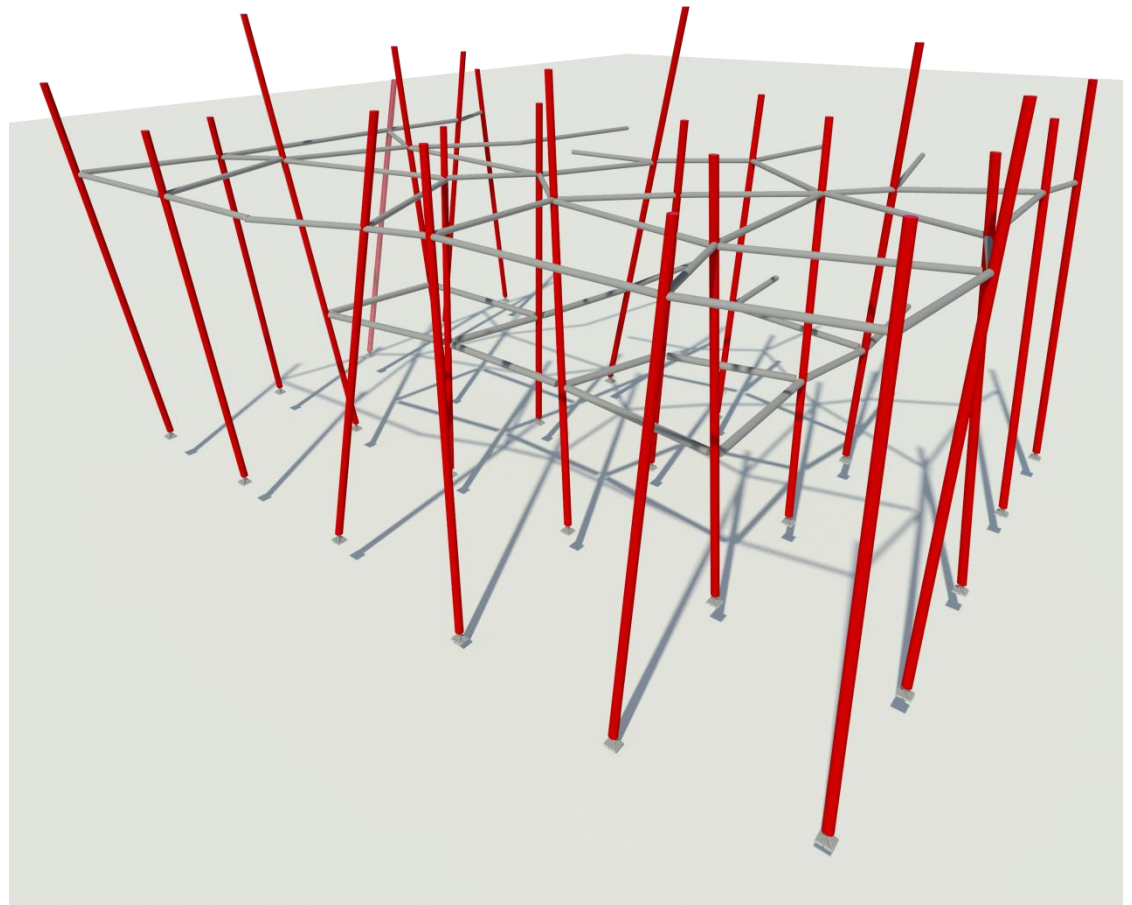
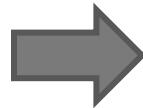
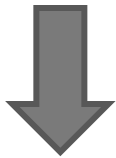


Picture from <http://wallpapers.free-review.net/42.htm>

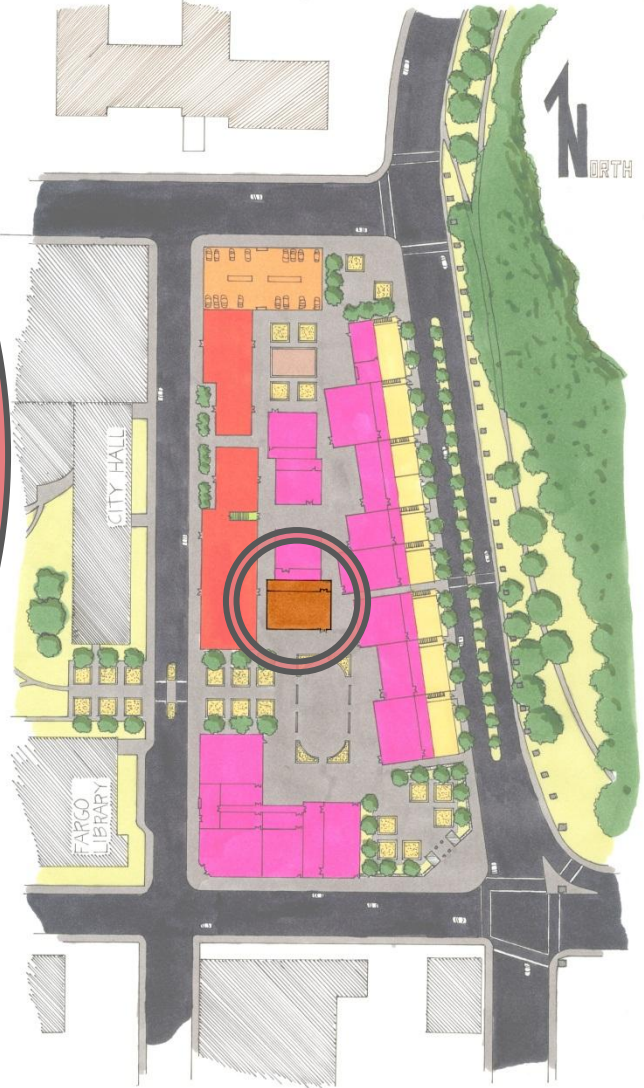
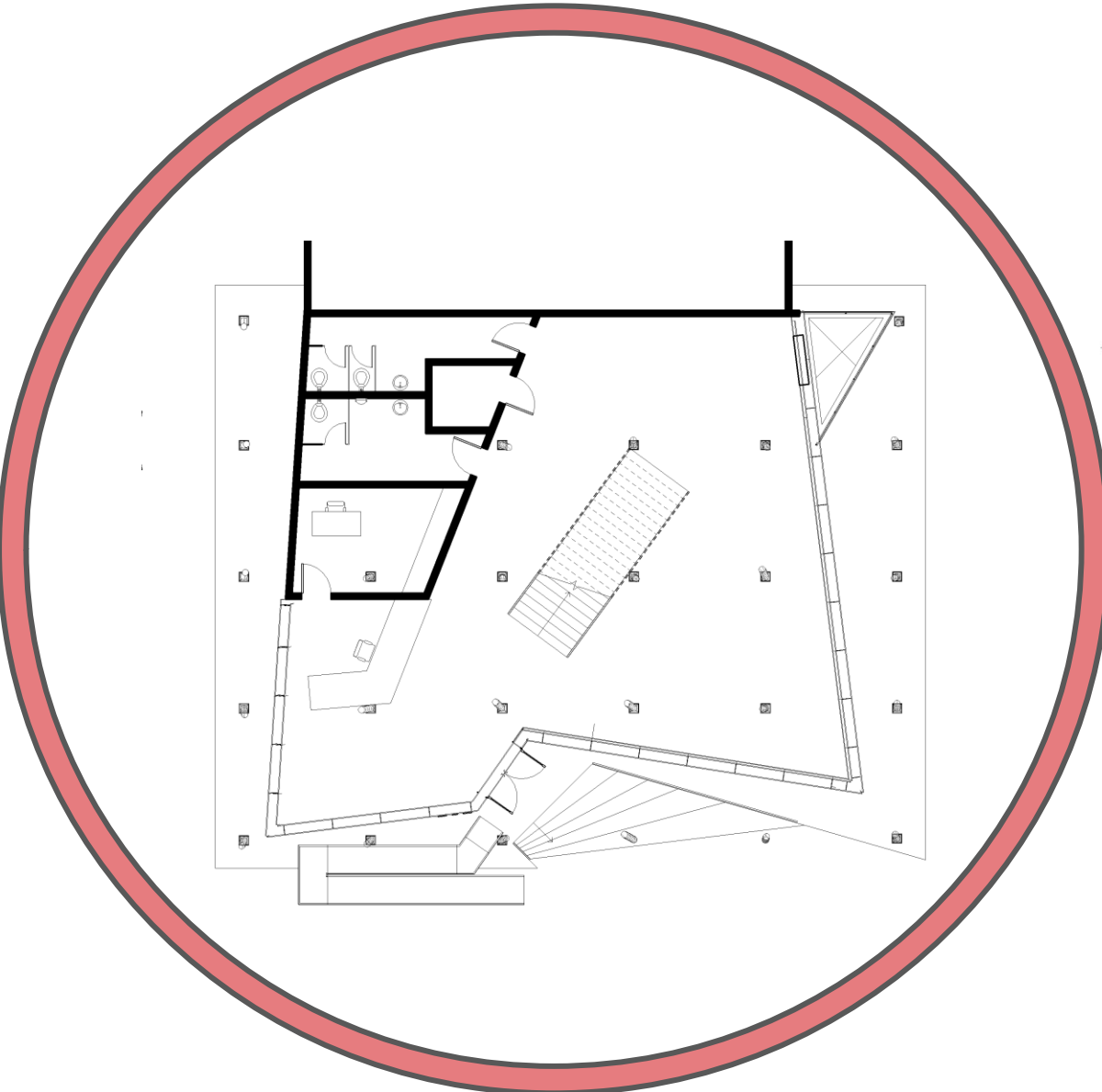
The parti stemmed from the original idea of the historical significance of nature on the site. The duality of urban landscape and nature is intriguing to the point that grass became the driver to building design.



FARGO MUSEUM

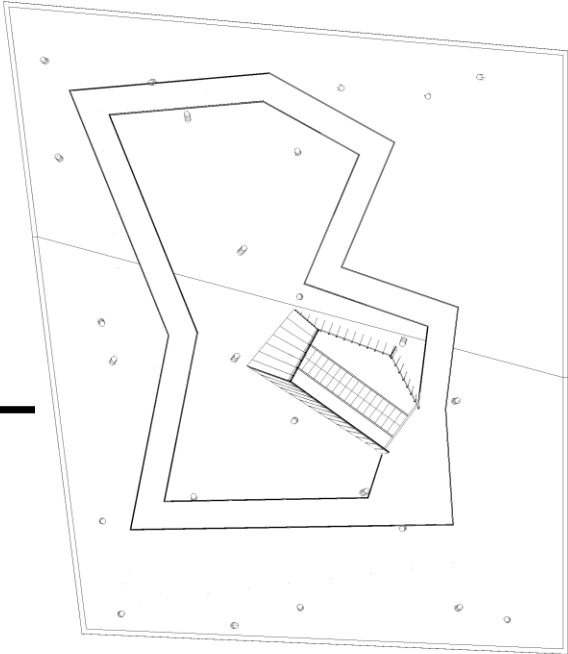


FARGO MUSEUM

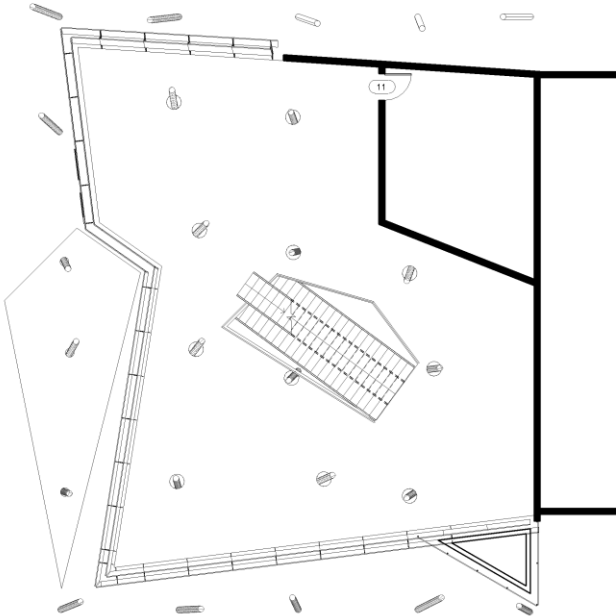
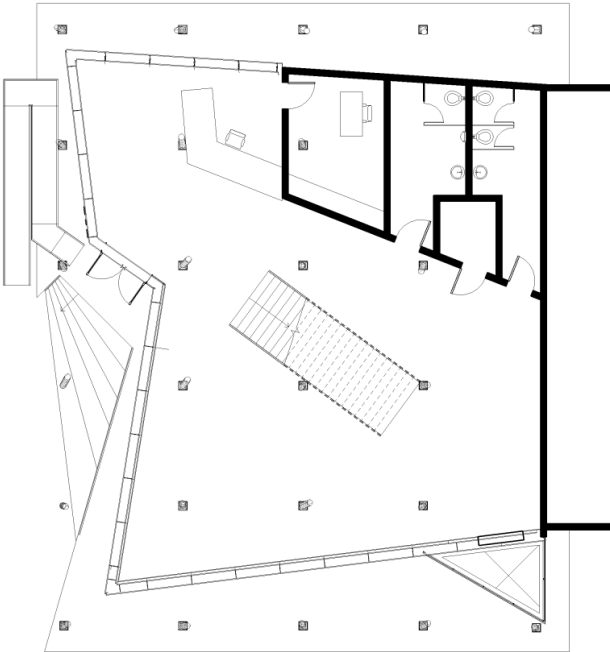


FARGO MUSEUM

2nd FLOOR PLAN

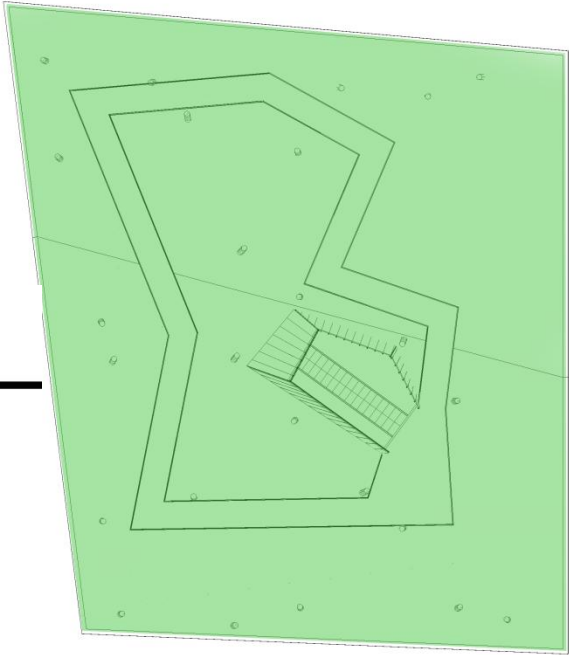


1st FLOOR PLAN

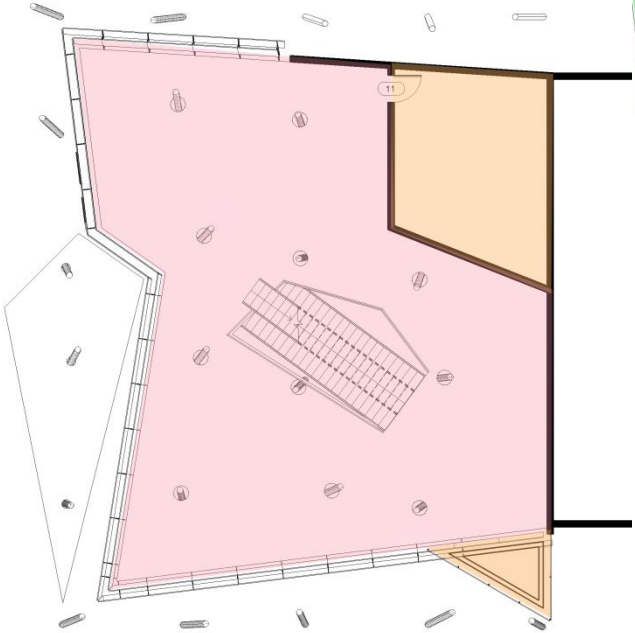


FARGO MUSEUM

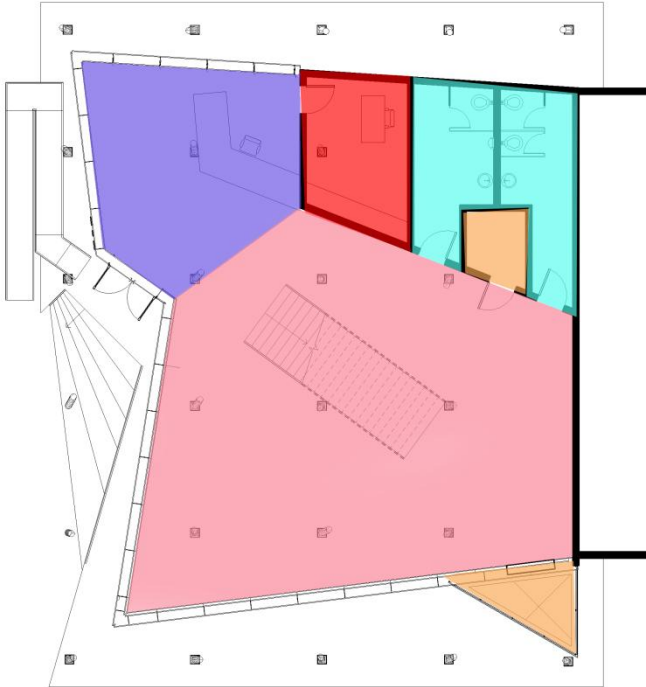
2nd FLOOR PLAN



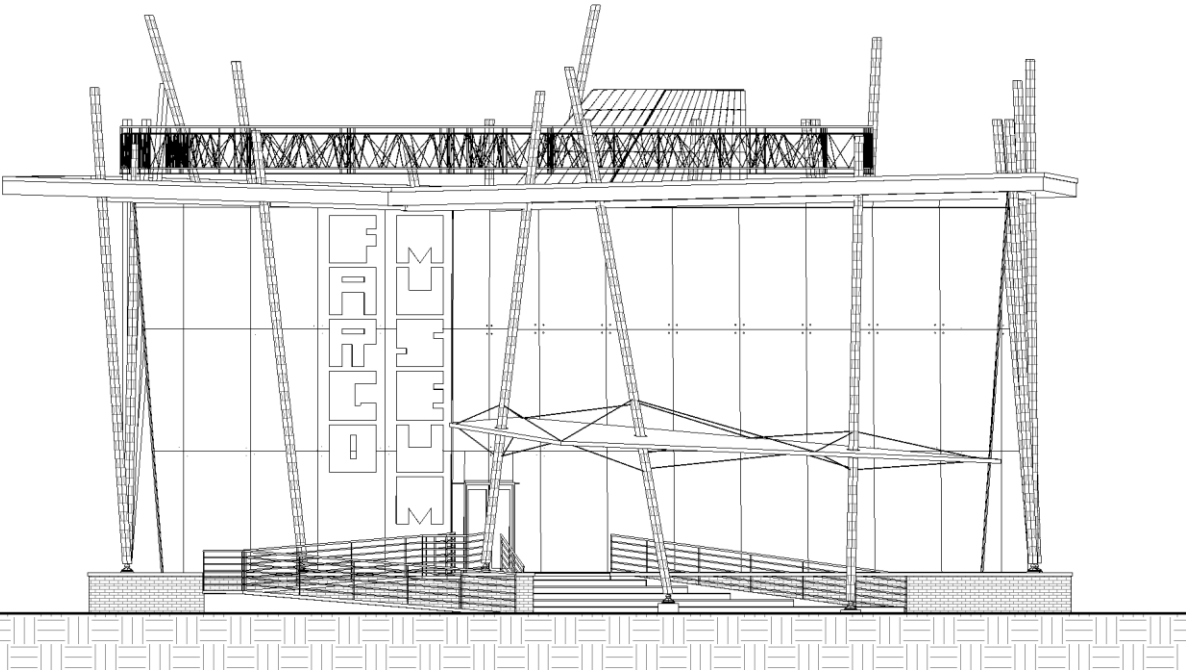
1st FLOOR PLAN



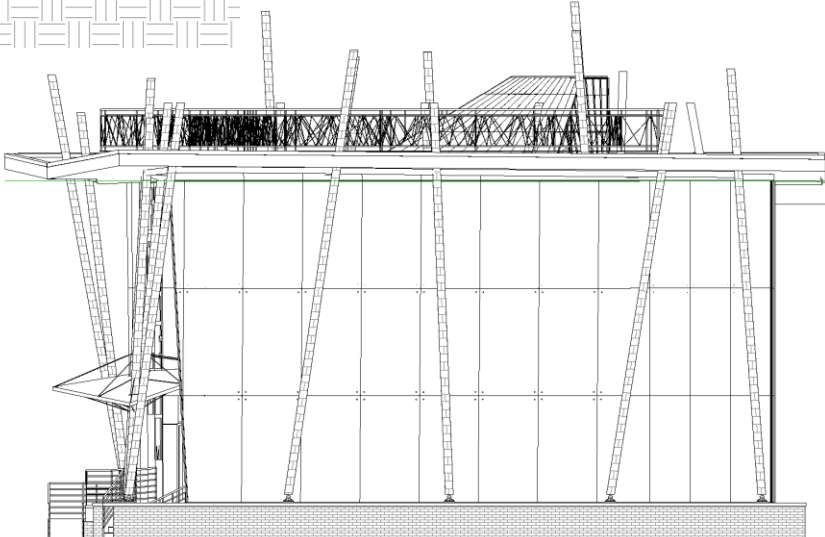
- Restrooms
- Utilities
- Gift Shop/Entry
- Exhibition Space
- Offices
- Grass Roof



FARGO MUSEUM

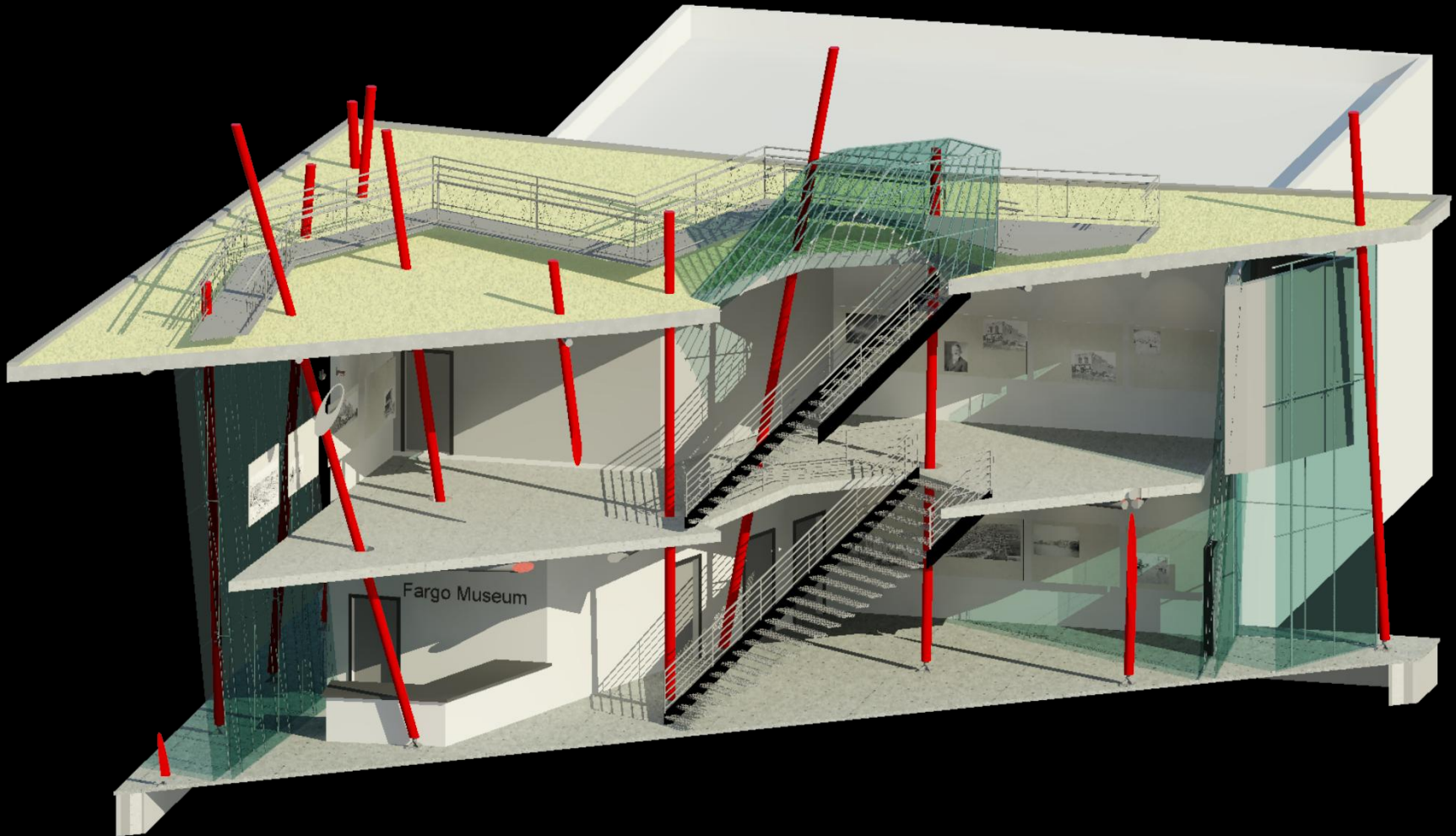
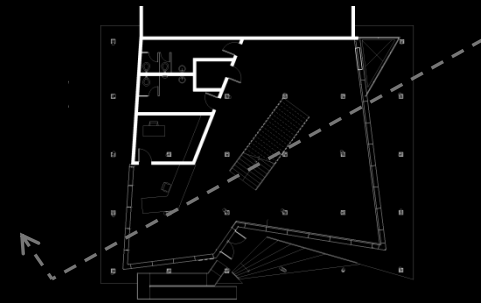


South Elevation



East Elevation

SECTION-PERSPECTIVE



Fargo Museum

