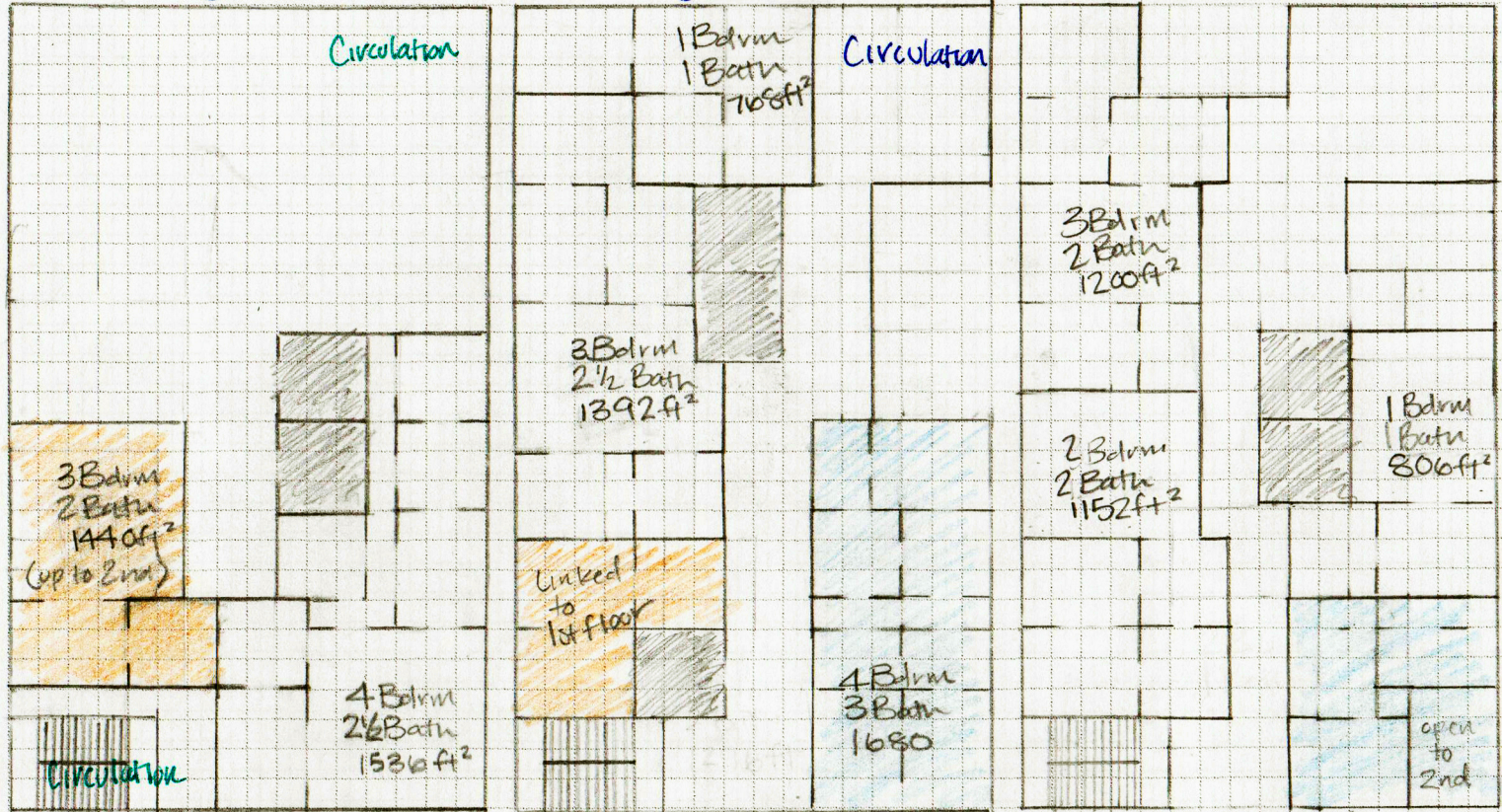




Ground

Second

Third



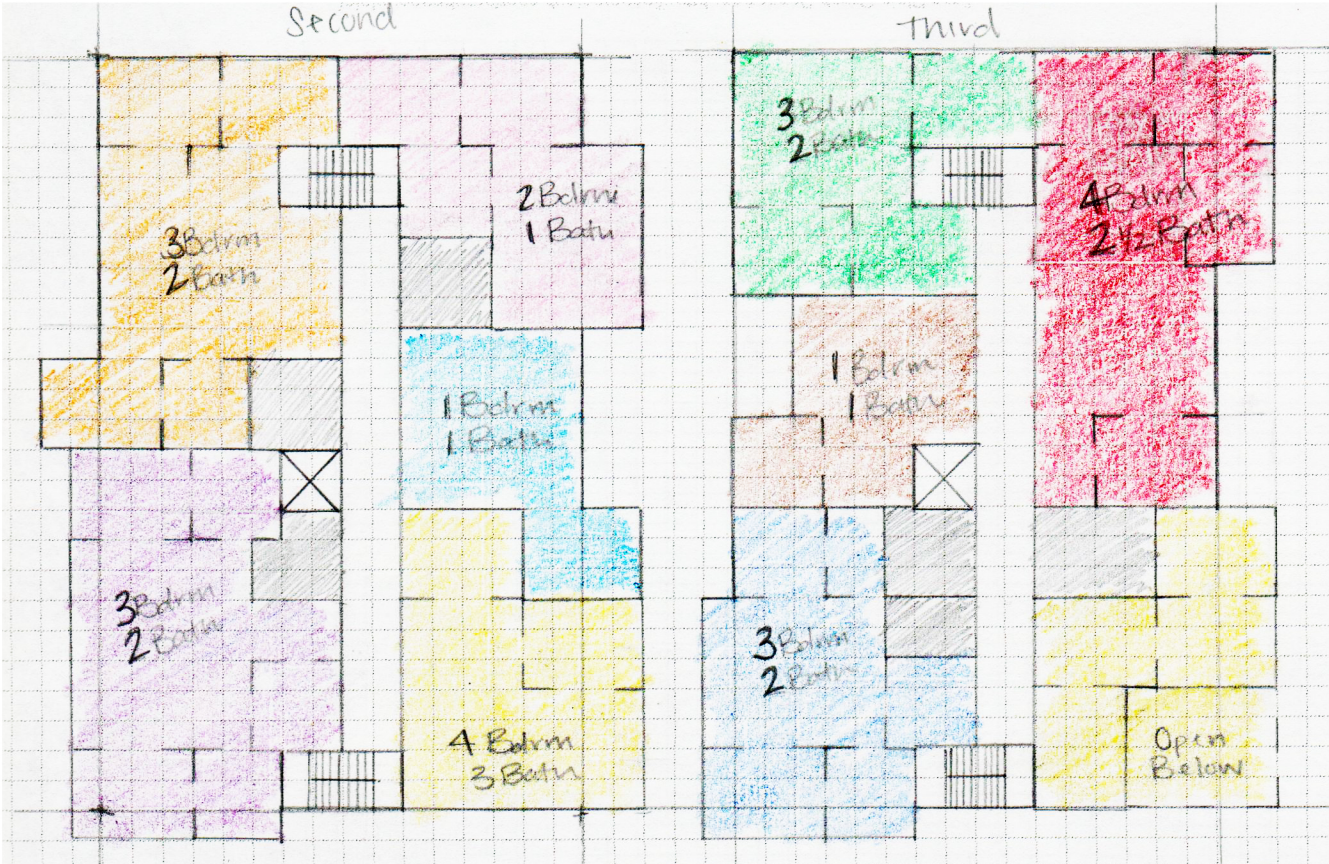






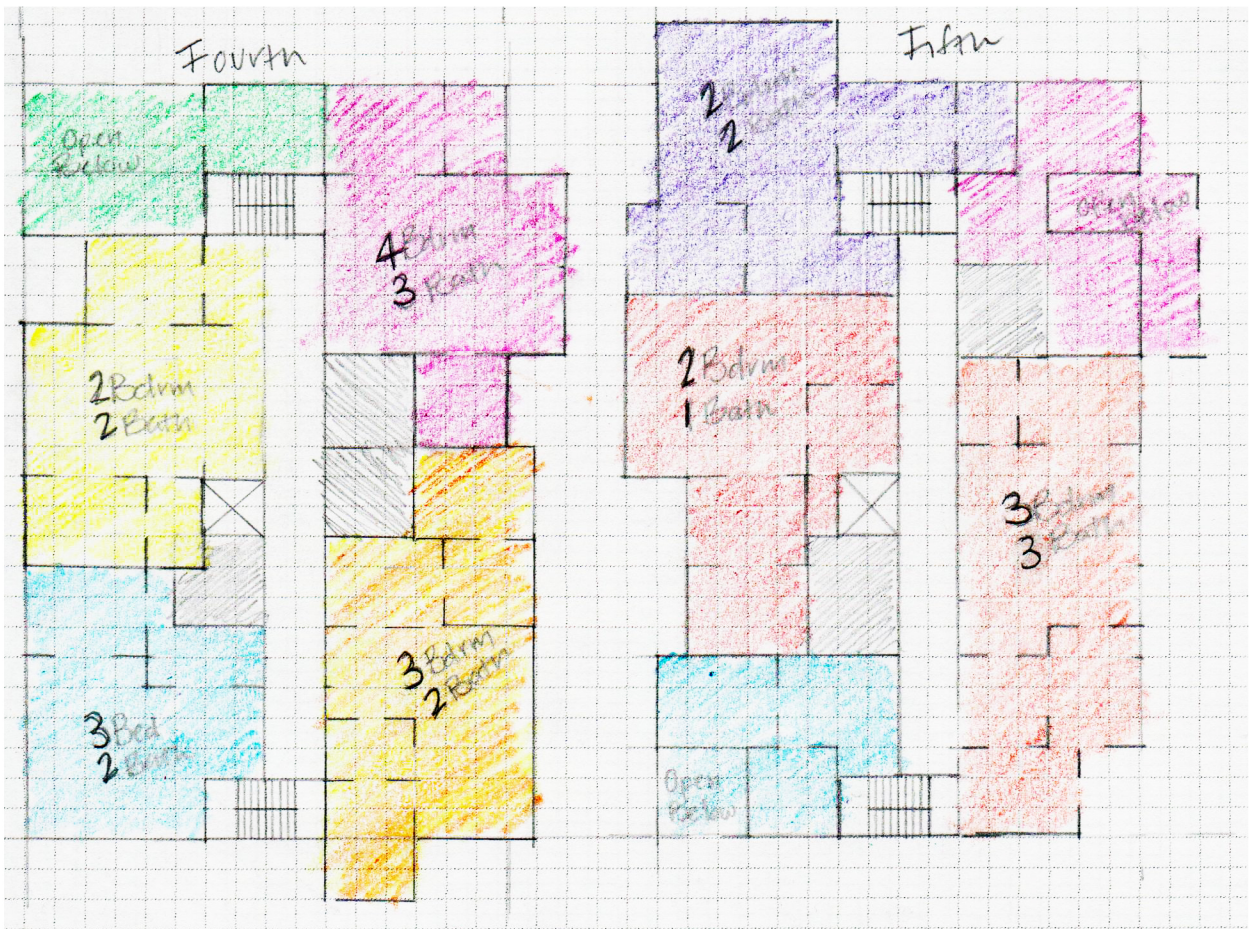
Second

Third

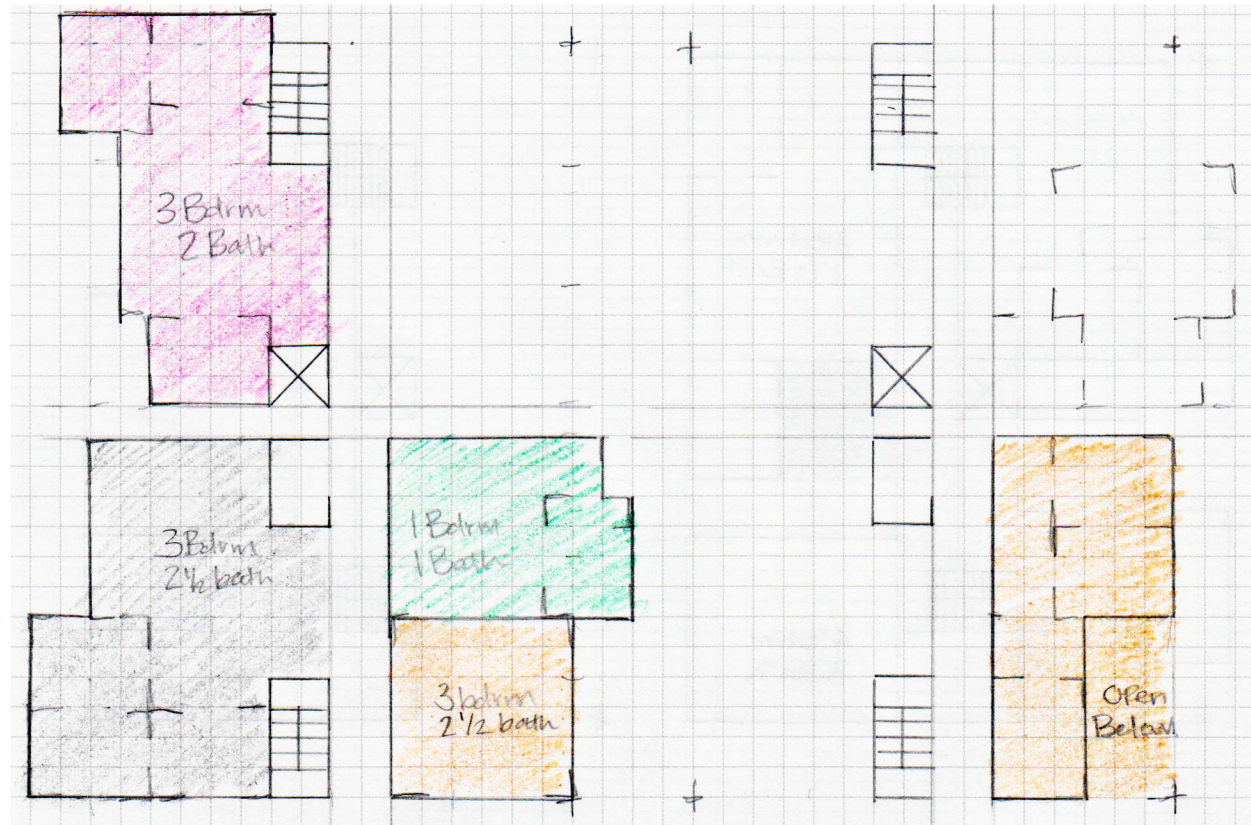


Fourth

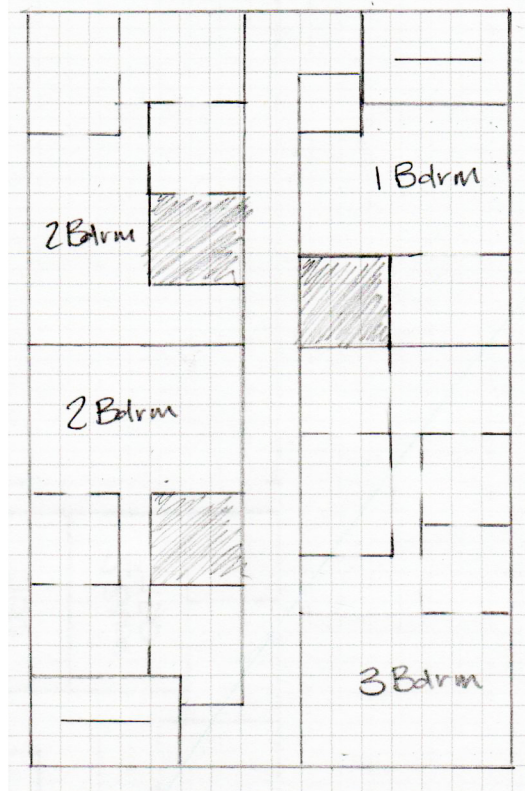
Fifth



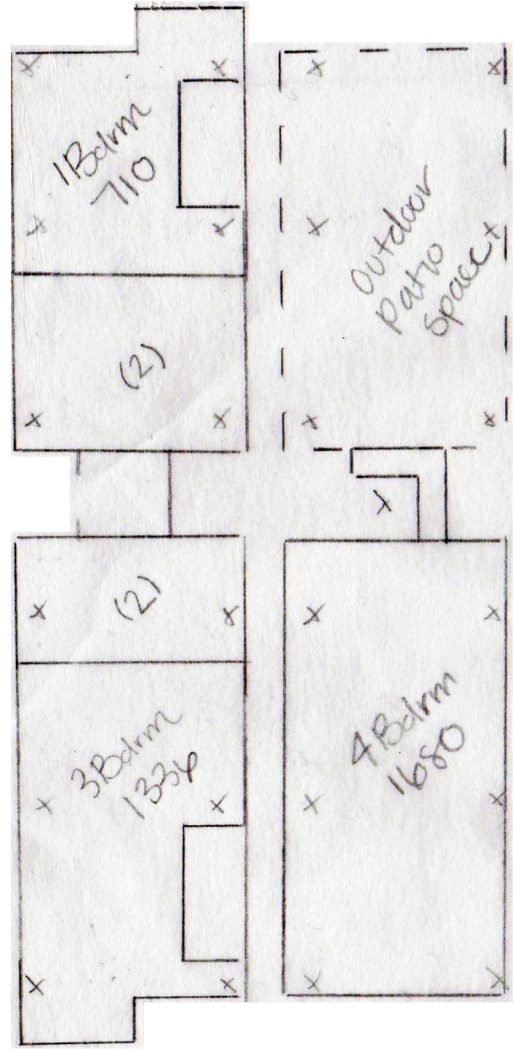
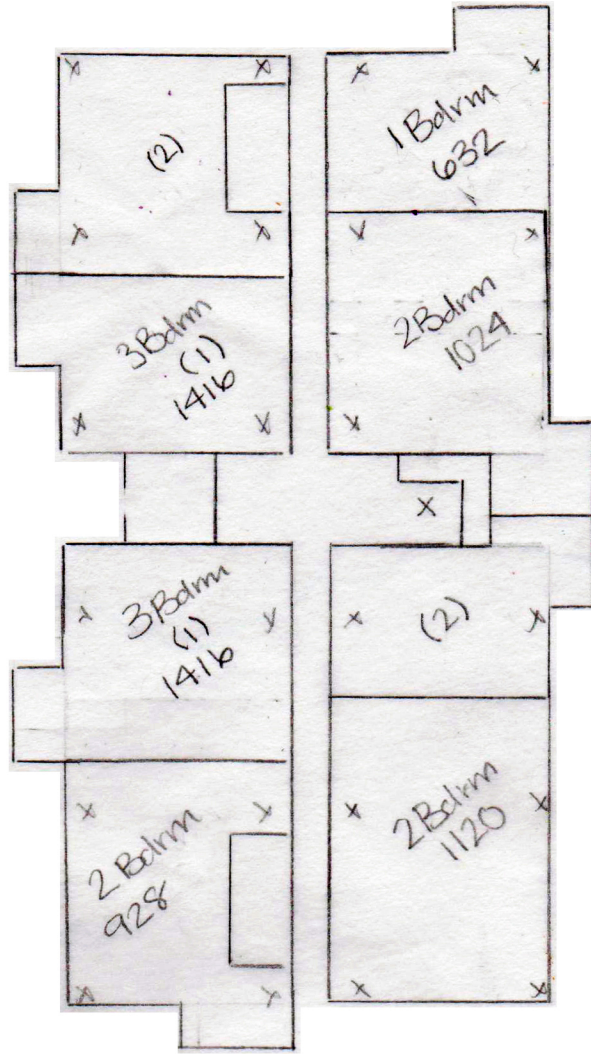




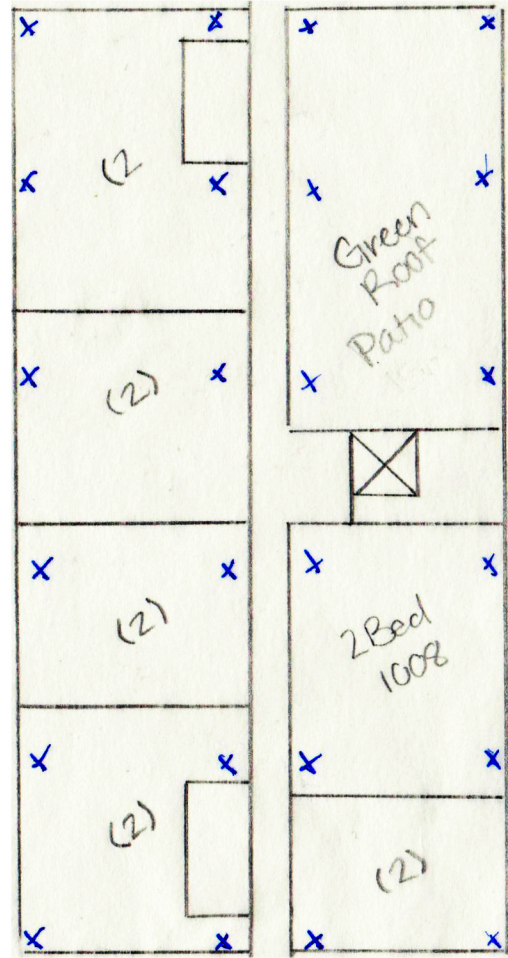
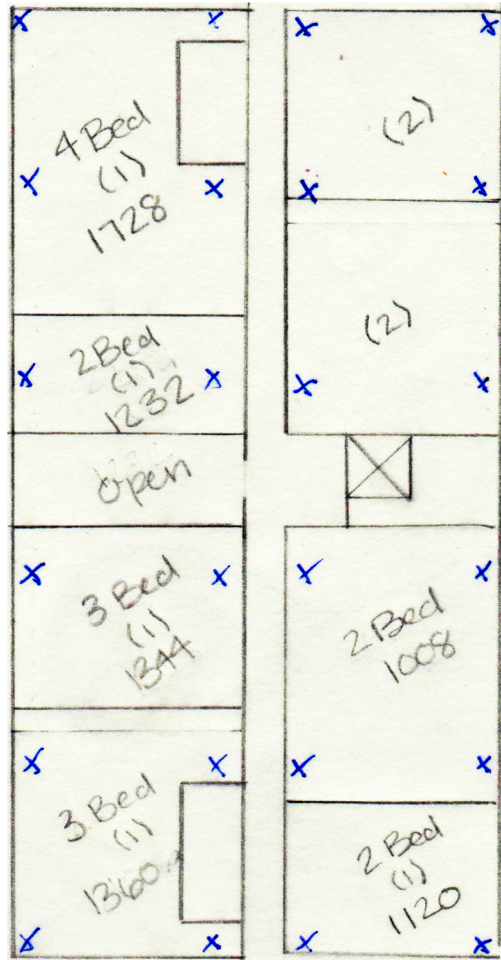
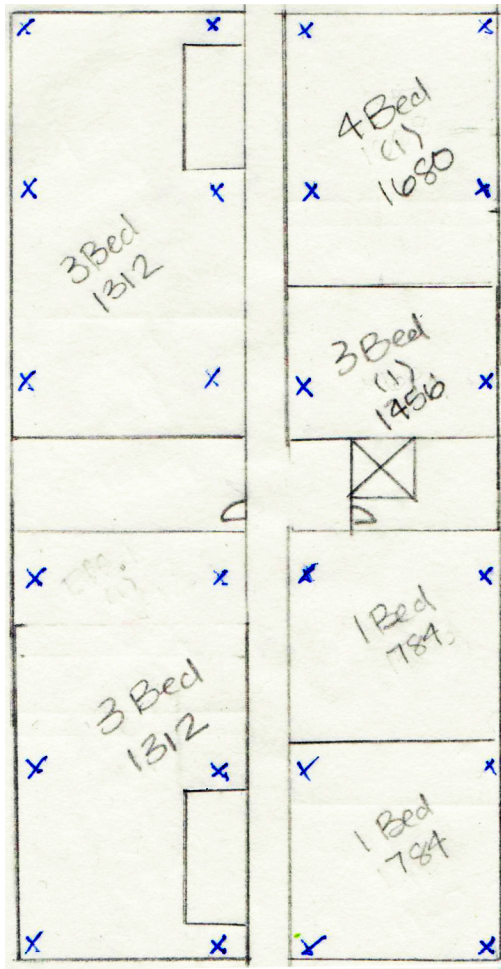




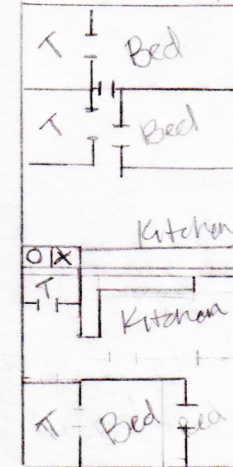
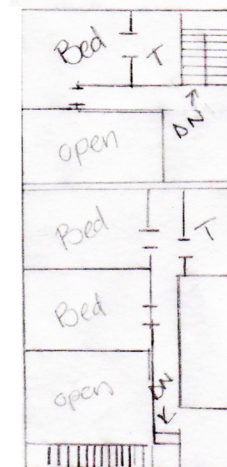
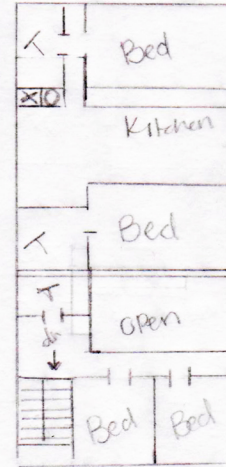
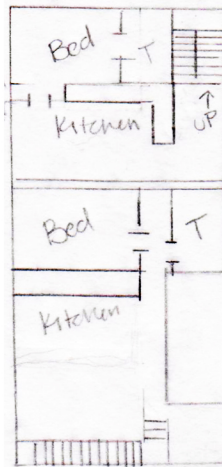
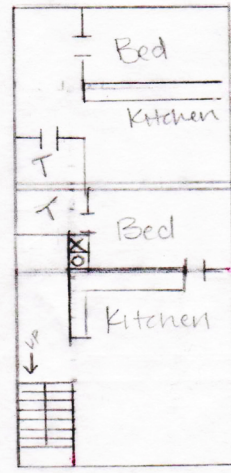
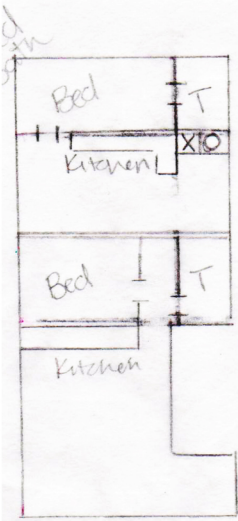
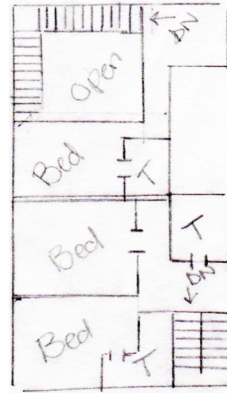
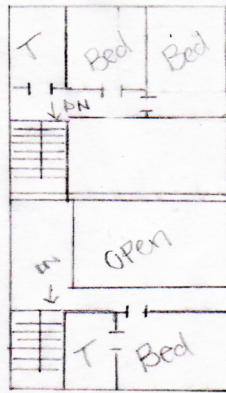
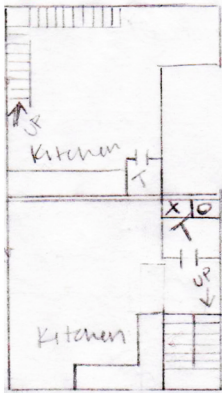
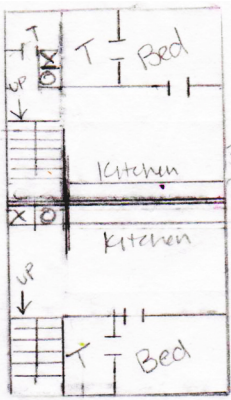
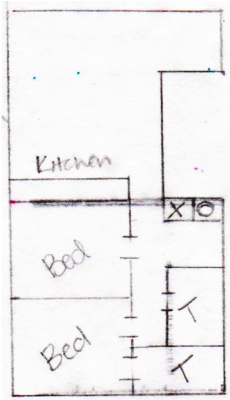




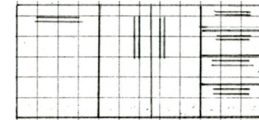
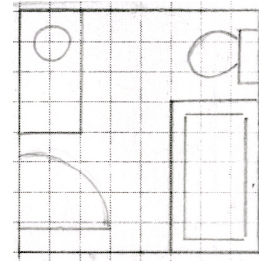
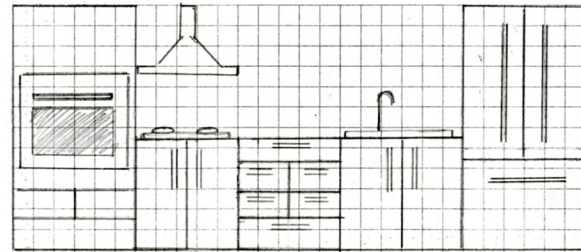
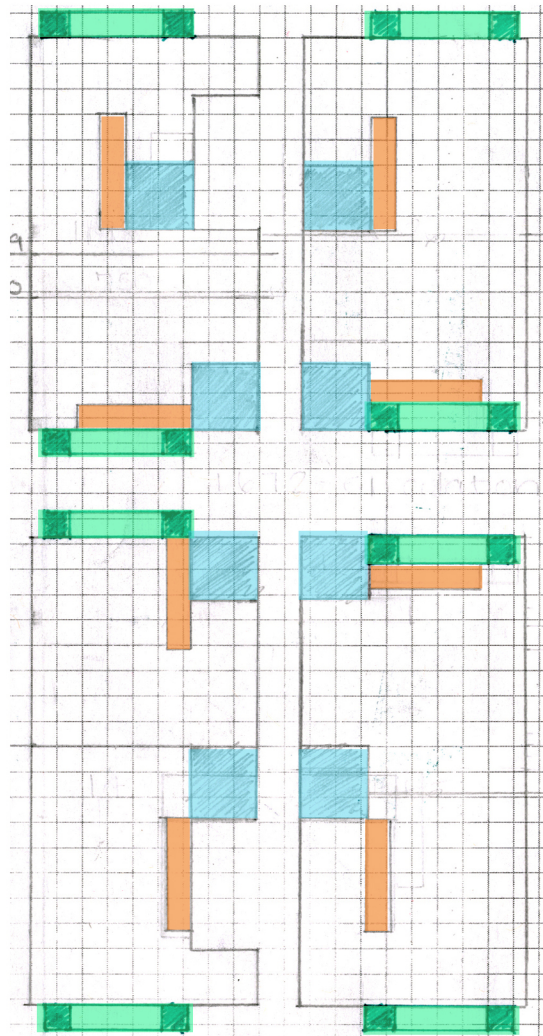




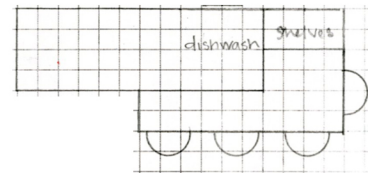
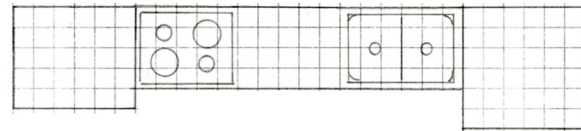






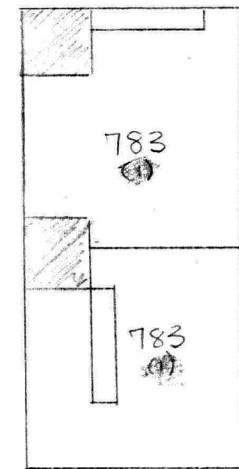
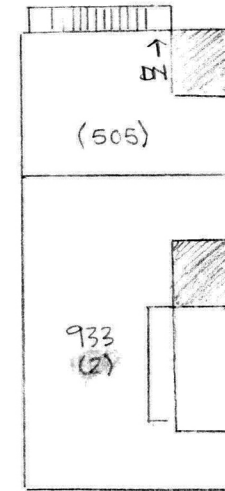
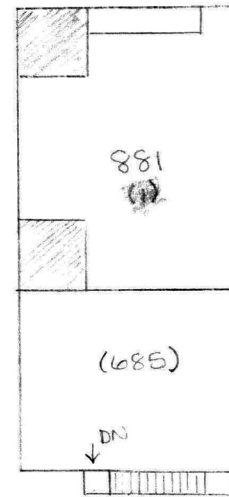
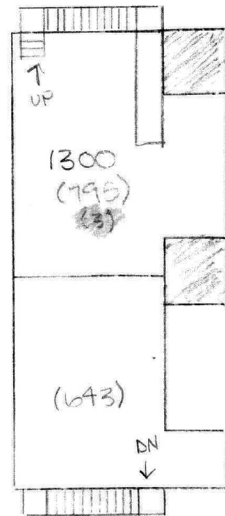
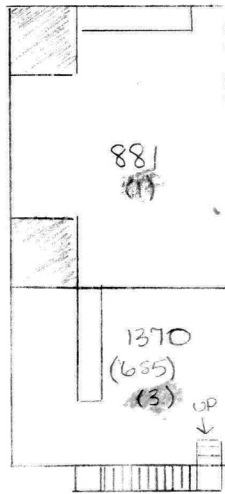
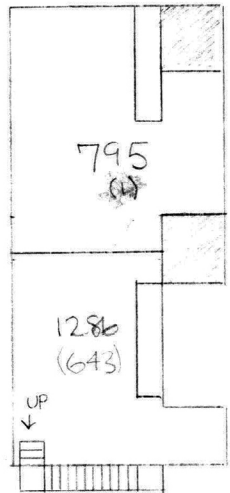
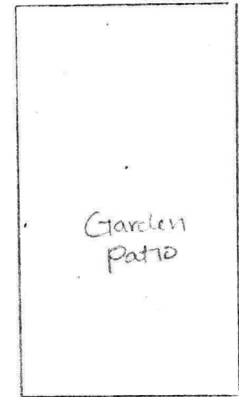
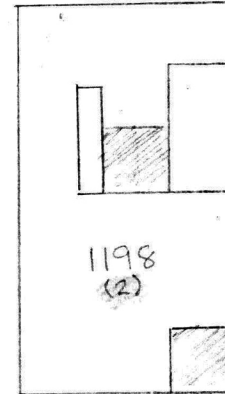
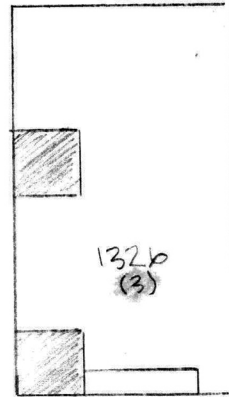
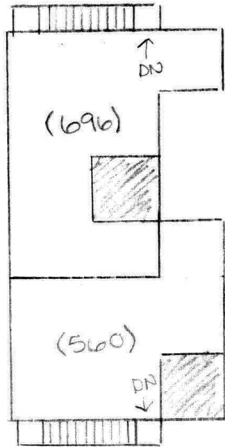
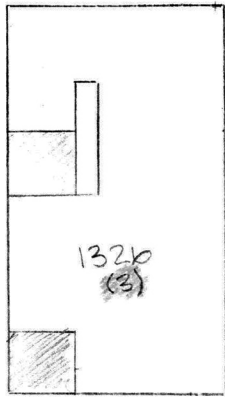
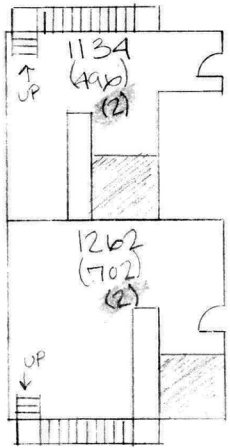


elev

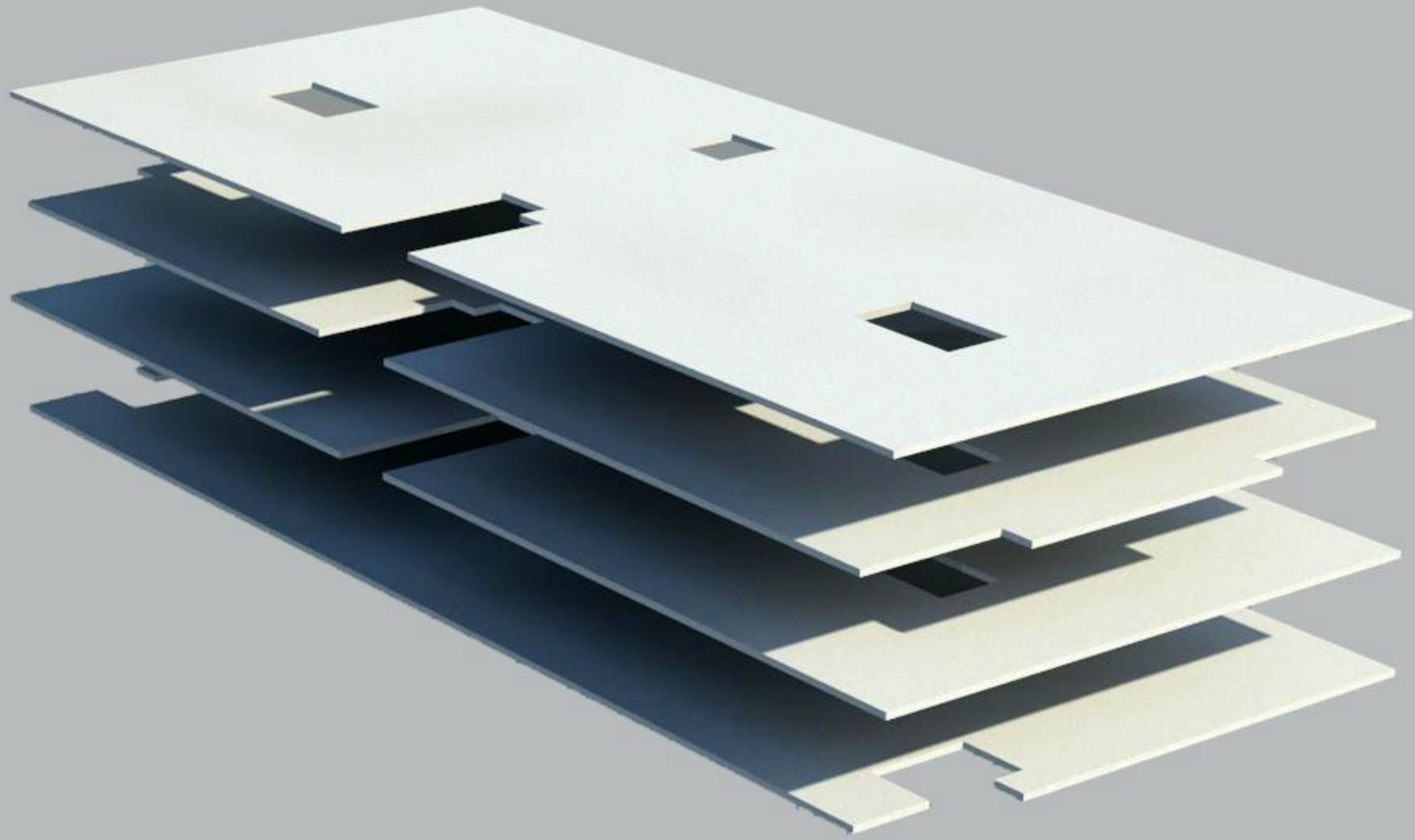


plan



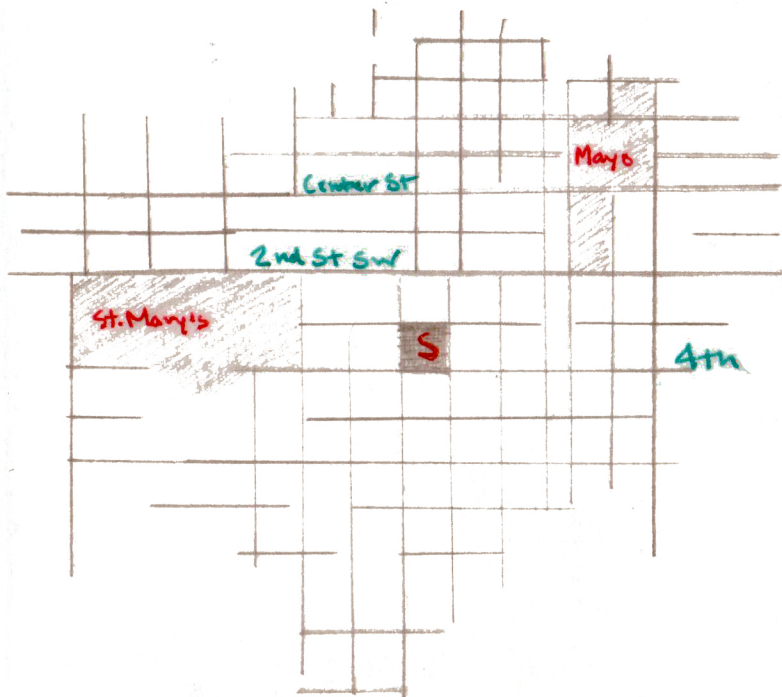








All Streets

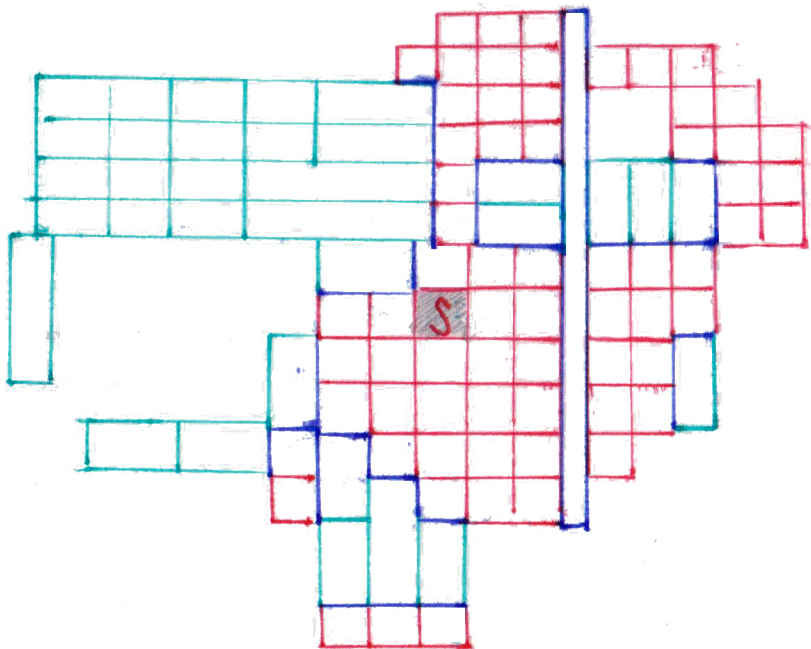




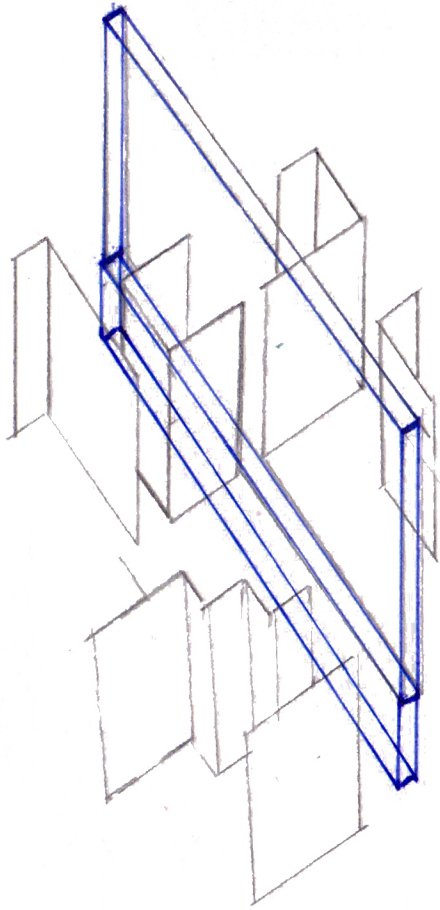




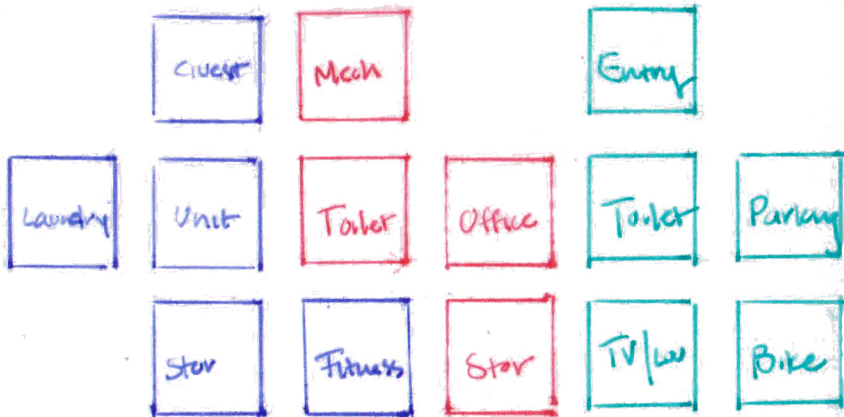
Shared boundaries



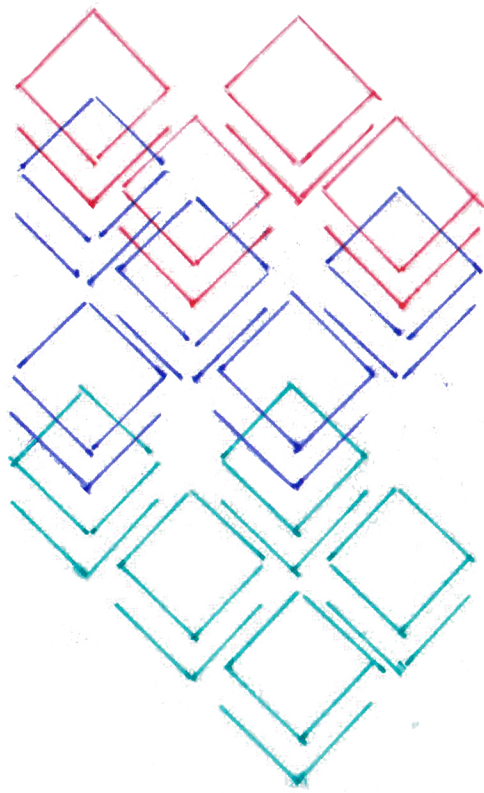




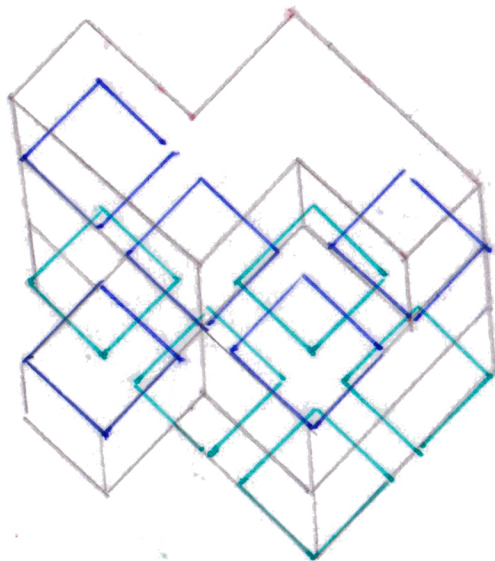






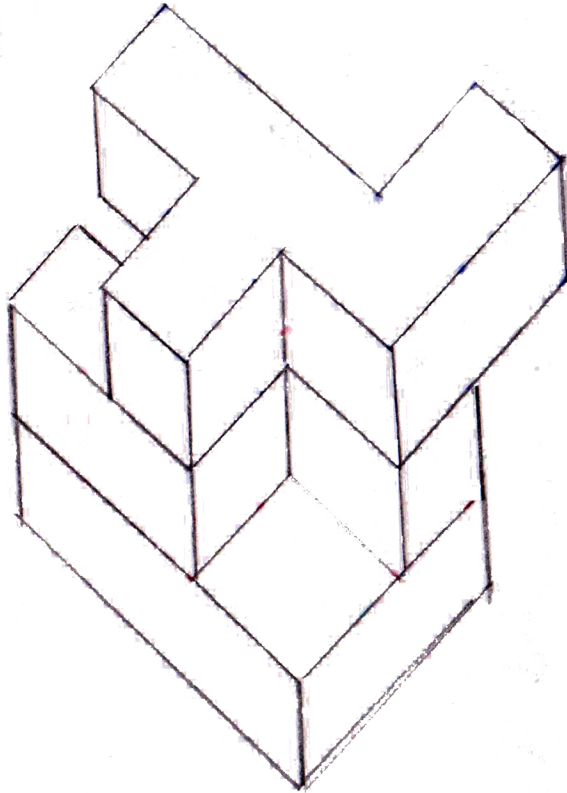




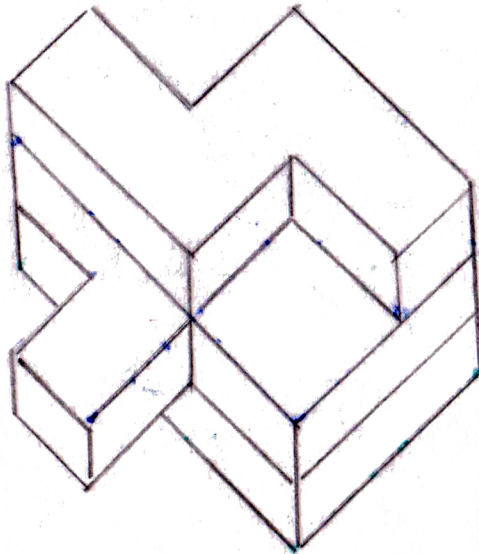




Stack one

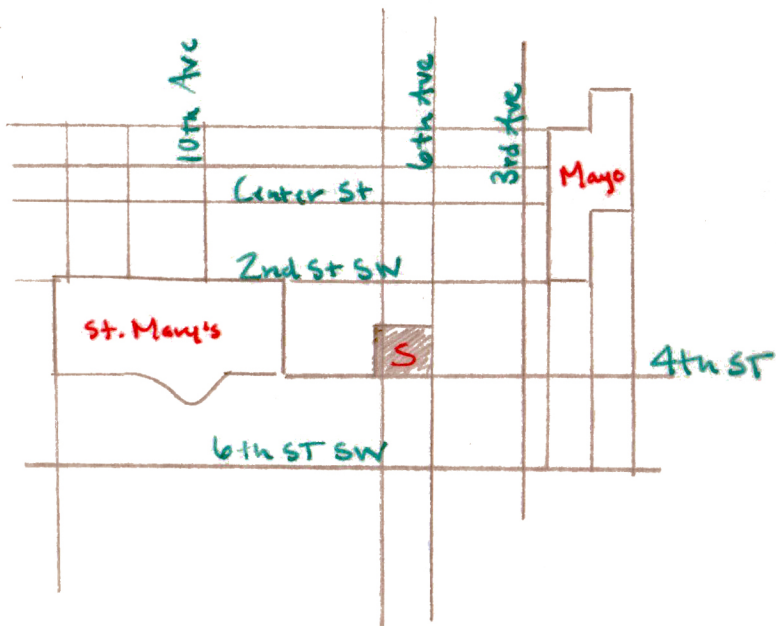


Stack Two

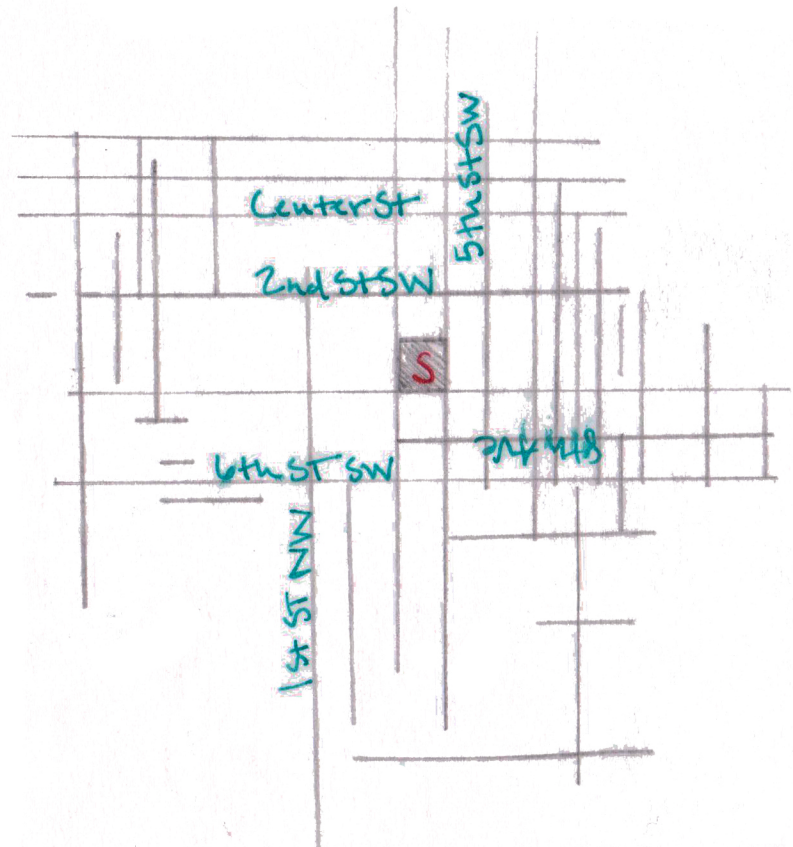




Streets that connect all the way



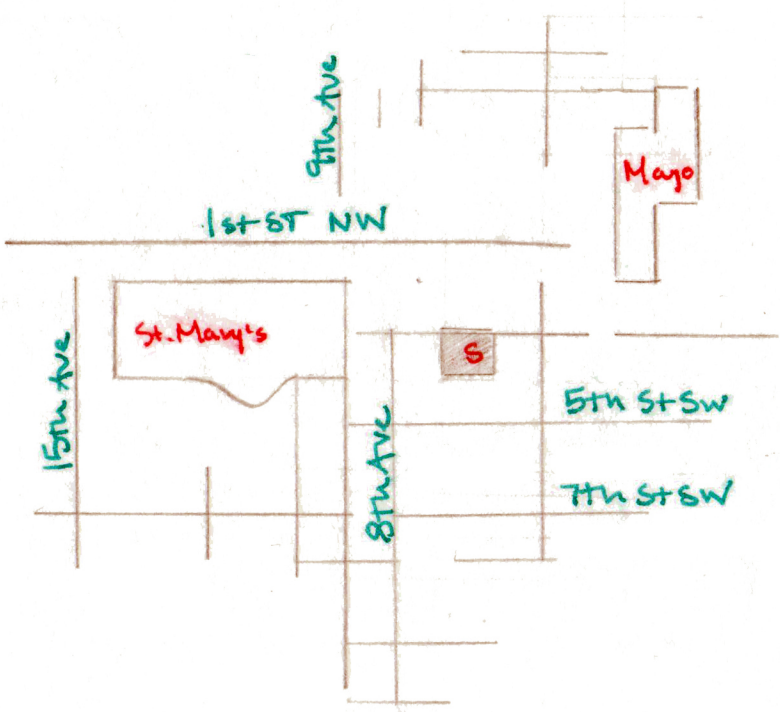
Streets that connect all the way



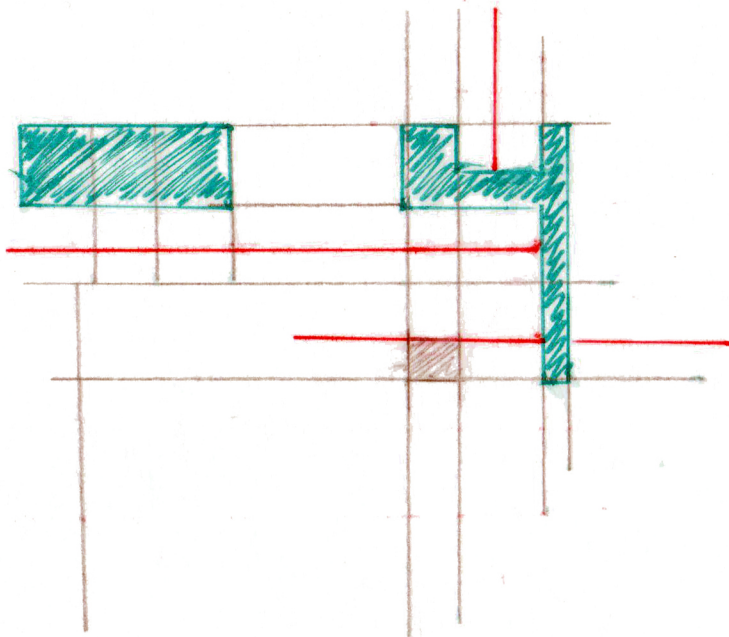
Streets that don't connect



# Streets that don't connect

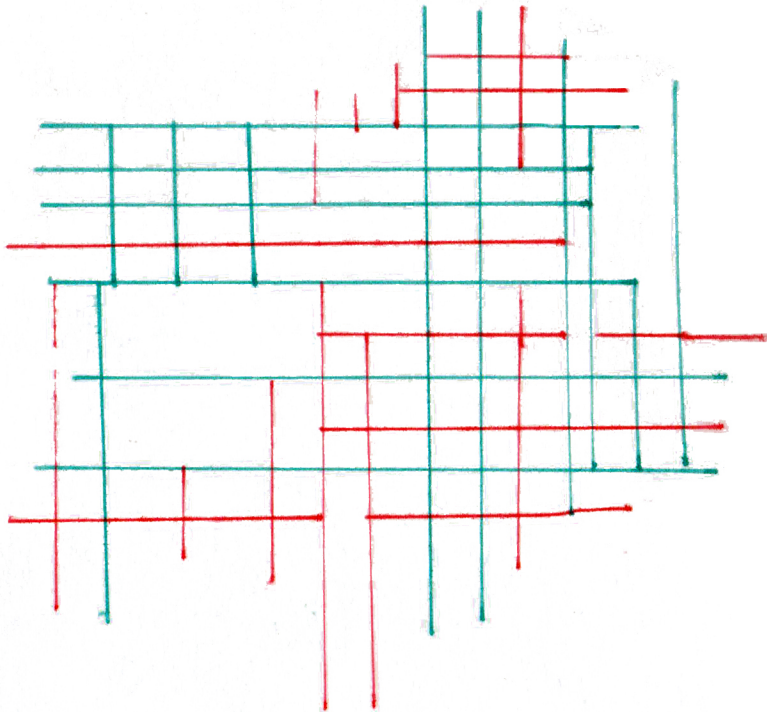


completely connected by green

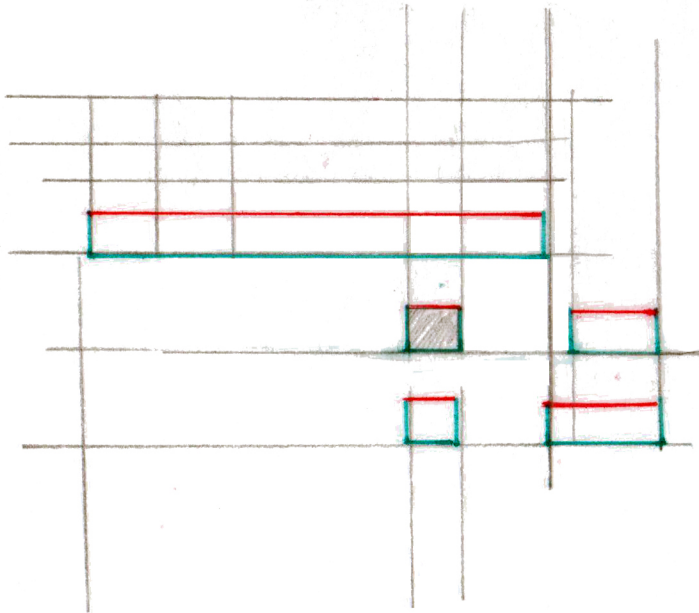




green = through red = stopped somewhere

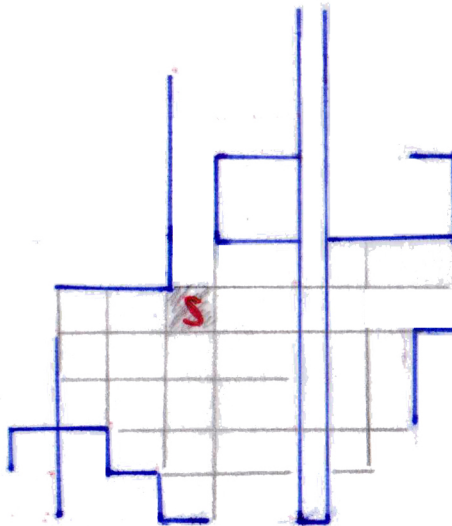


green = three sides red = one side

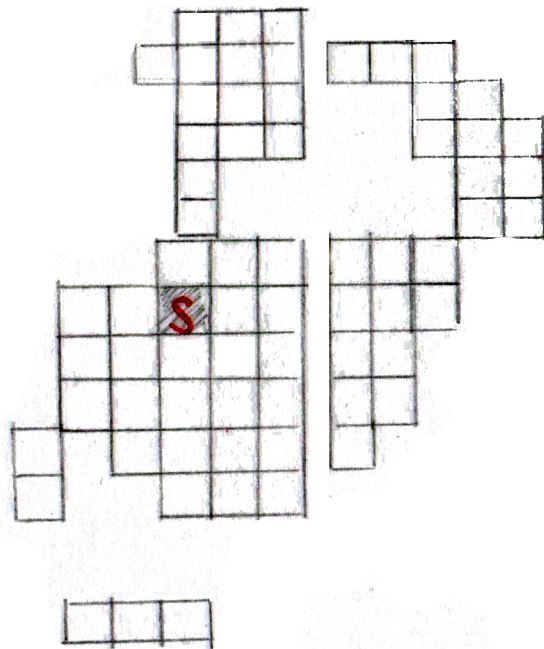




Shared lines in section



Squares





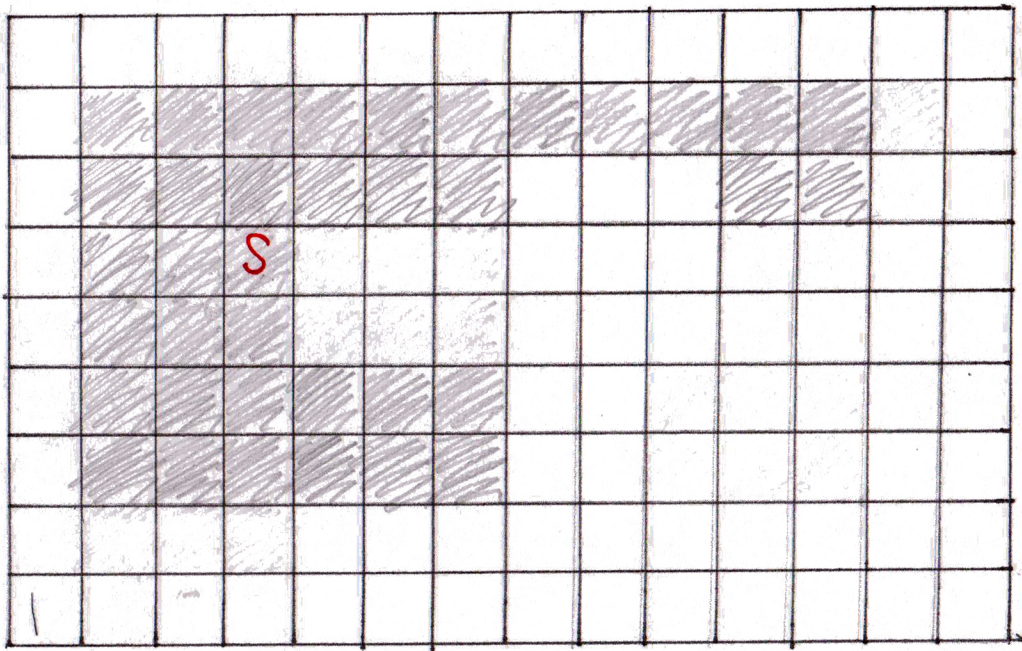








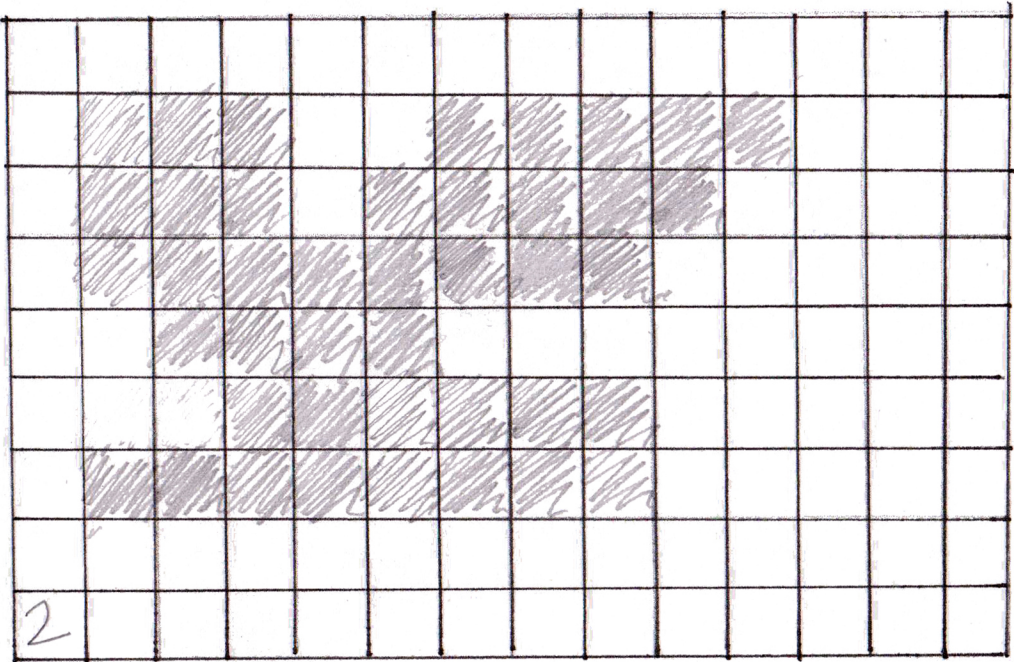
Streets that connect all the way through



1x1 sets



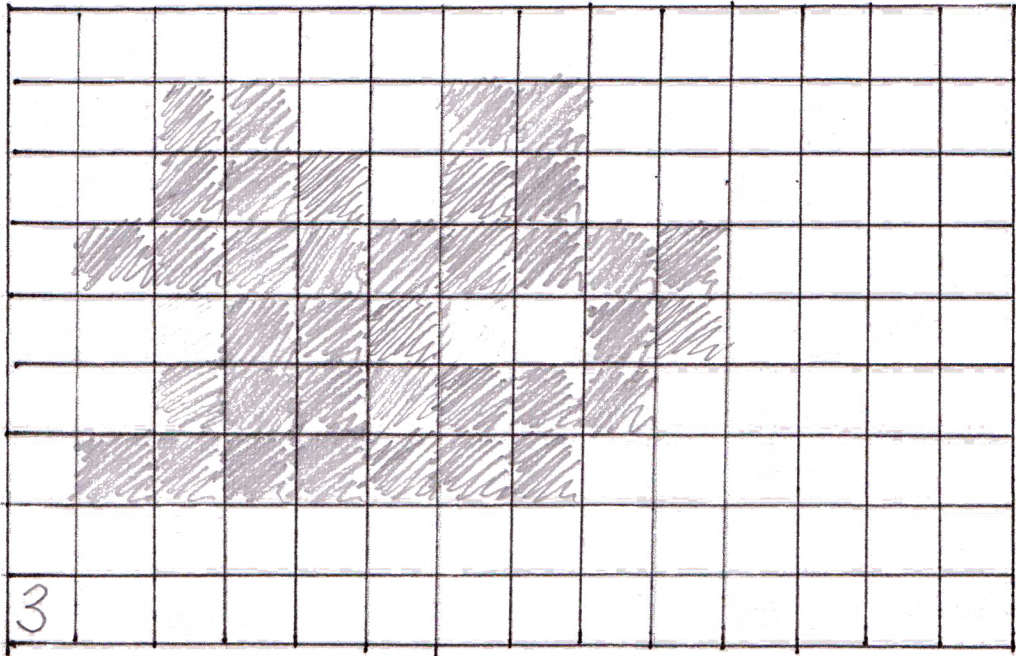
Streets that connect all the way through



2

1x1 sets

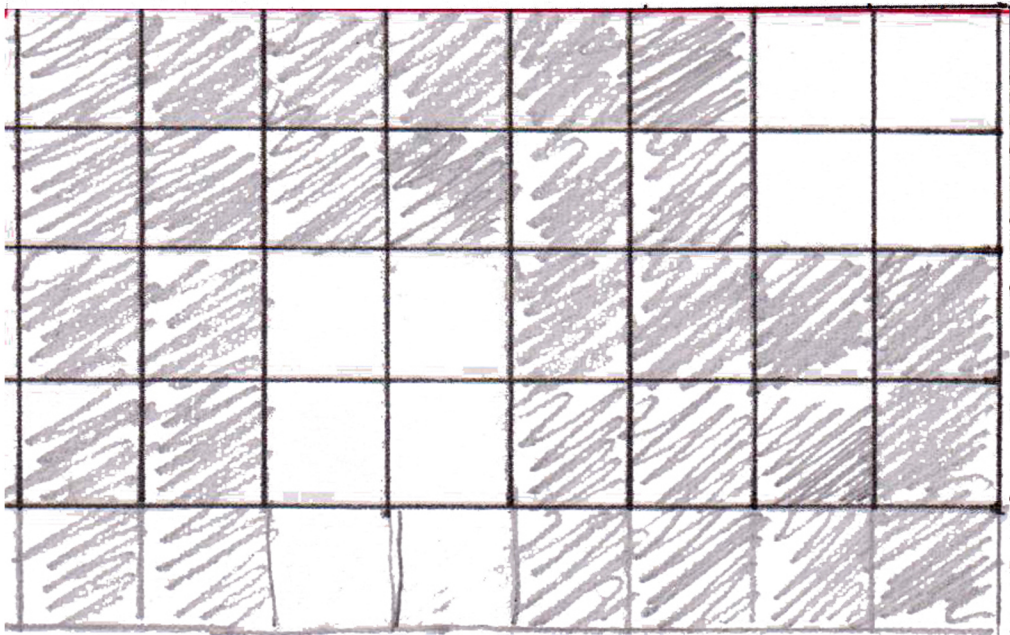
Streets that connect all the way through



1x1 sets

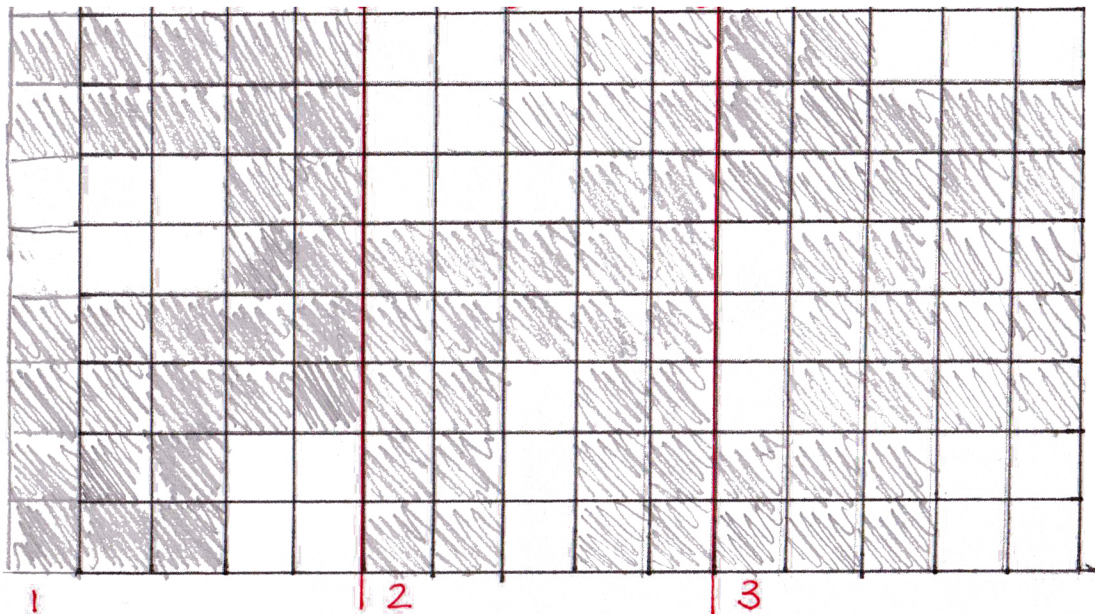


Streets that connect all the way through



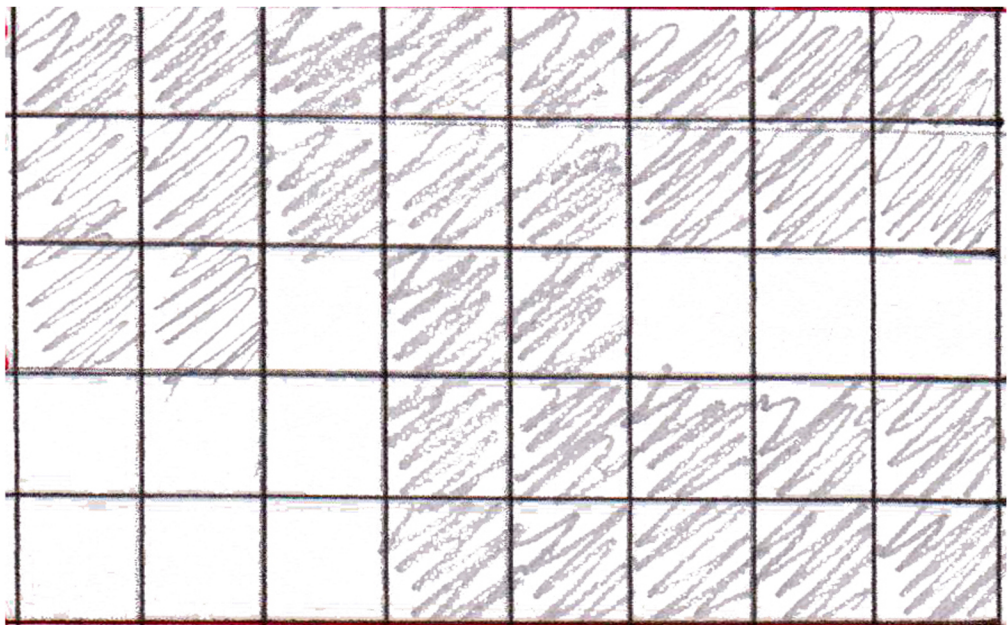
1x1 sets

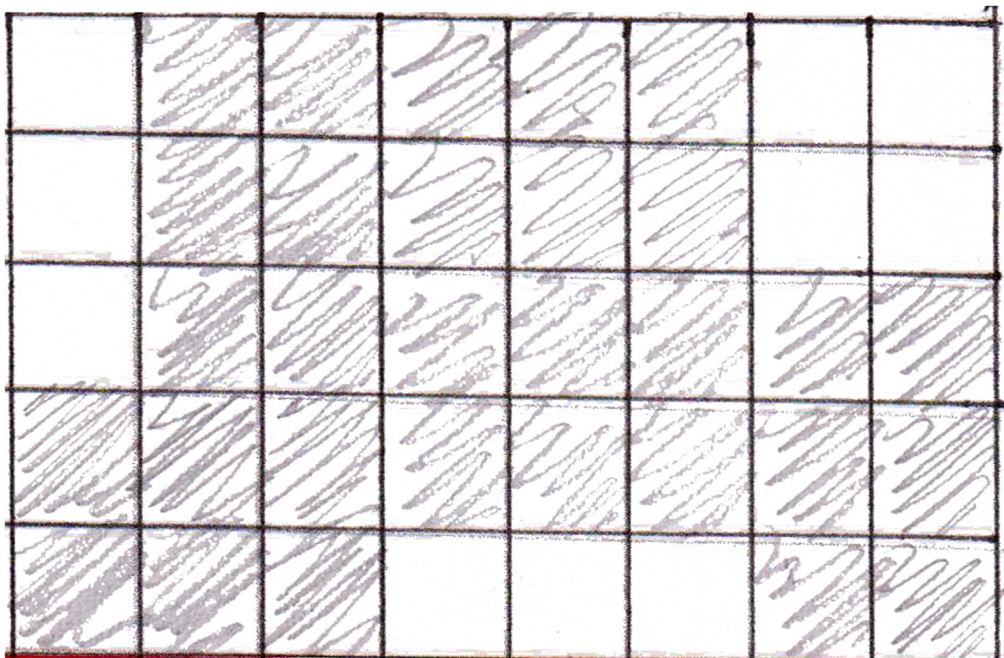
A Random 1 block = 20ft



2x3 sets



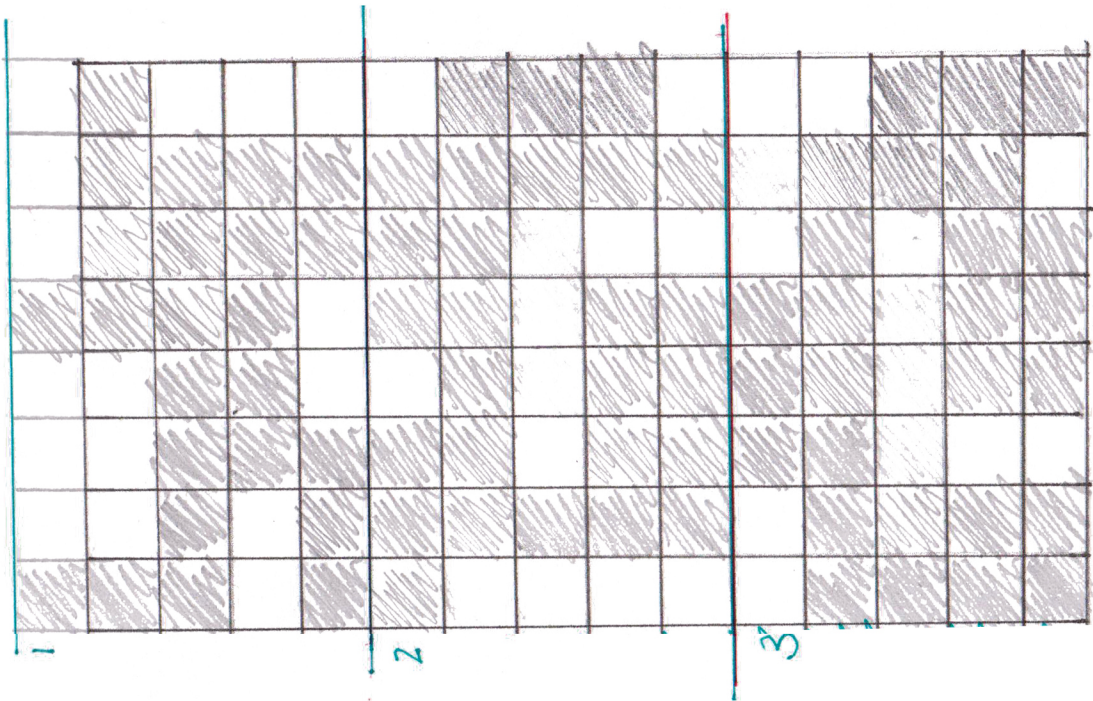






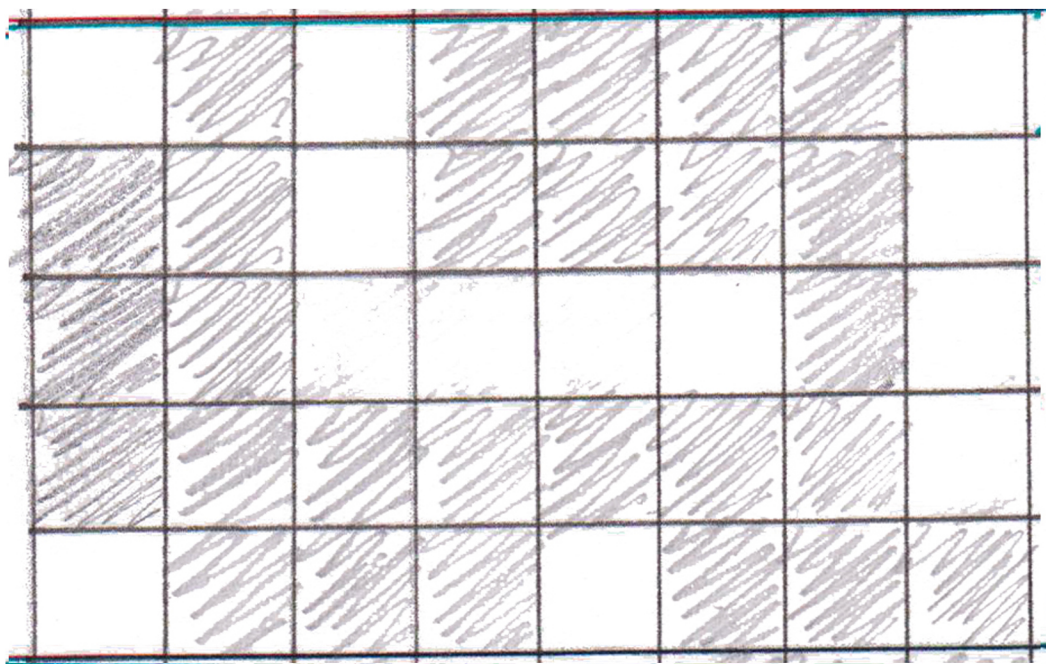
A 5x5 grid with a blue border. The cells in the upper-left triangle, where the row index is greater than or equal to the column index, are filled with diagonal hatching. The cells in the lower-right triangle, where the row index is less than the column index, are empty.


B Random 1 block = 20ft



1x3 sets

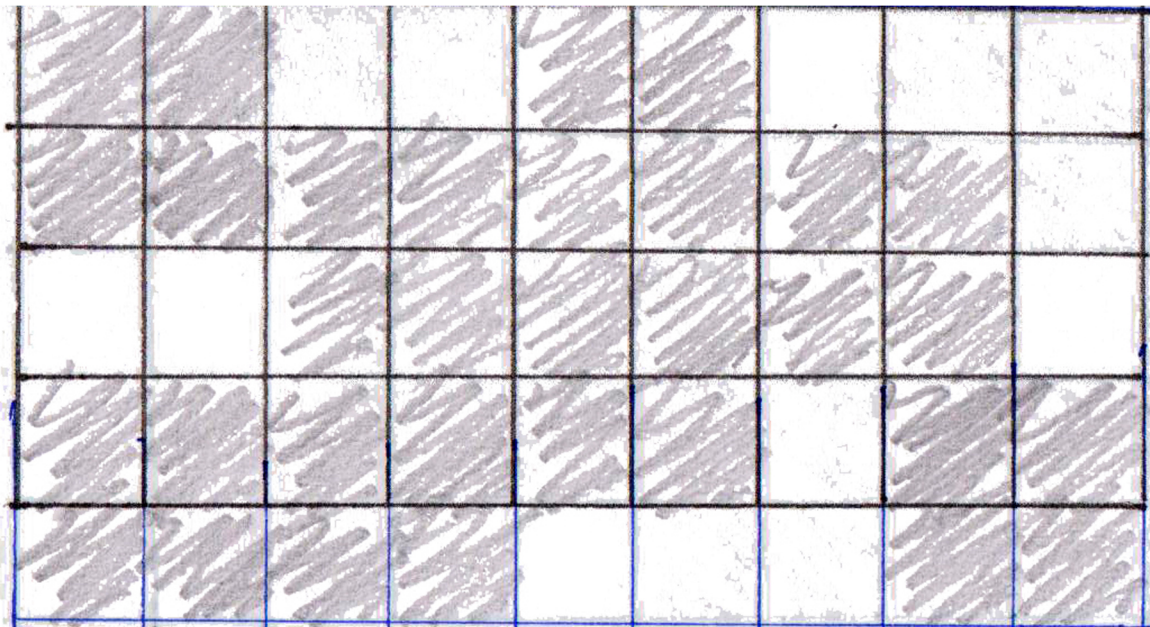




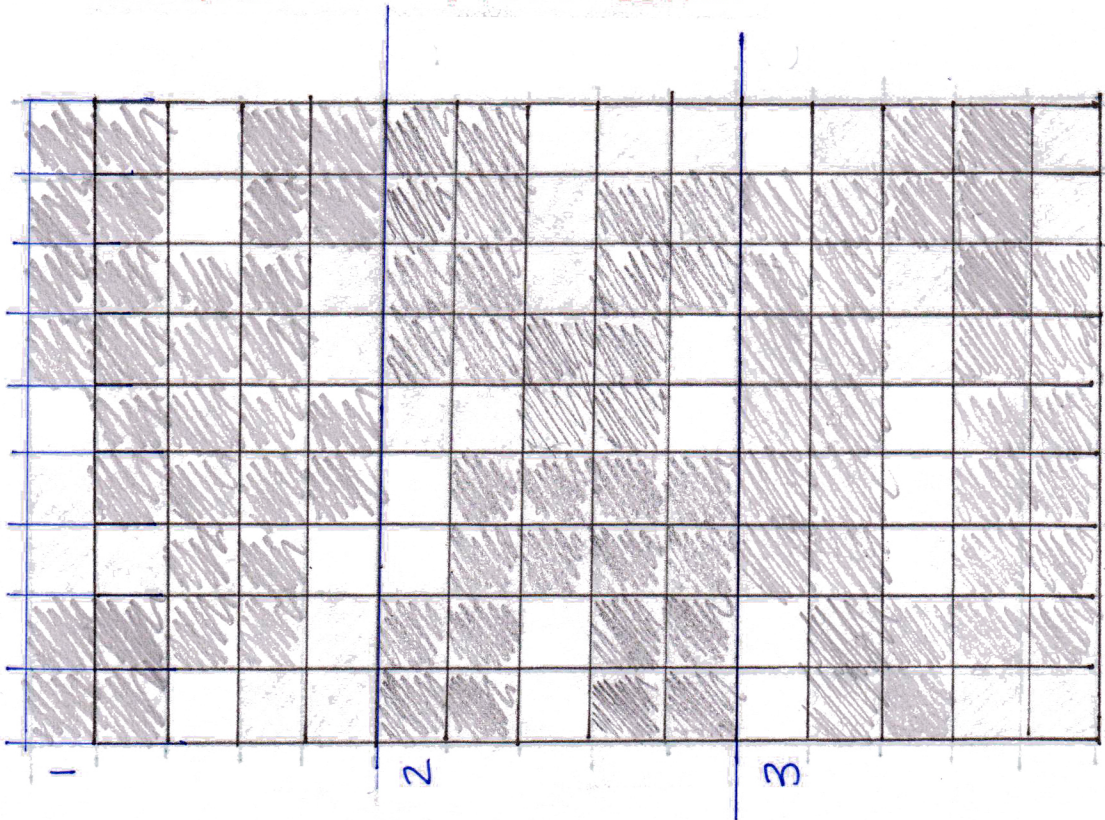
400 201

Shaded		Shaded	Shaded		Shaded	Shaded
Shaded	Shaded	Shaded	Shaded		Shaded	Shaded
Shaded	Shaded		Shaded	Shaded	Shaded	Shaded
	Shaded	Shaded	Shaded	Shaded	Shaded	Shaded
			Shaded	Shaded	Shaded	



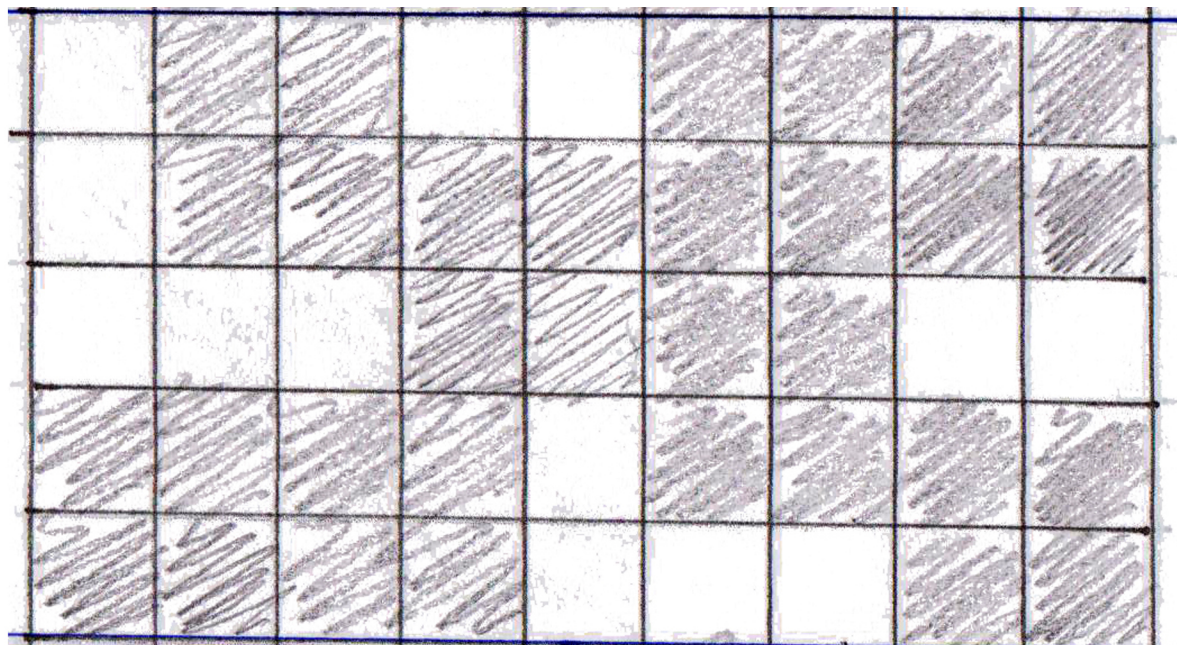


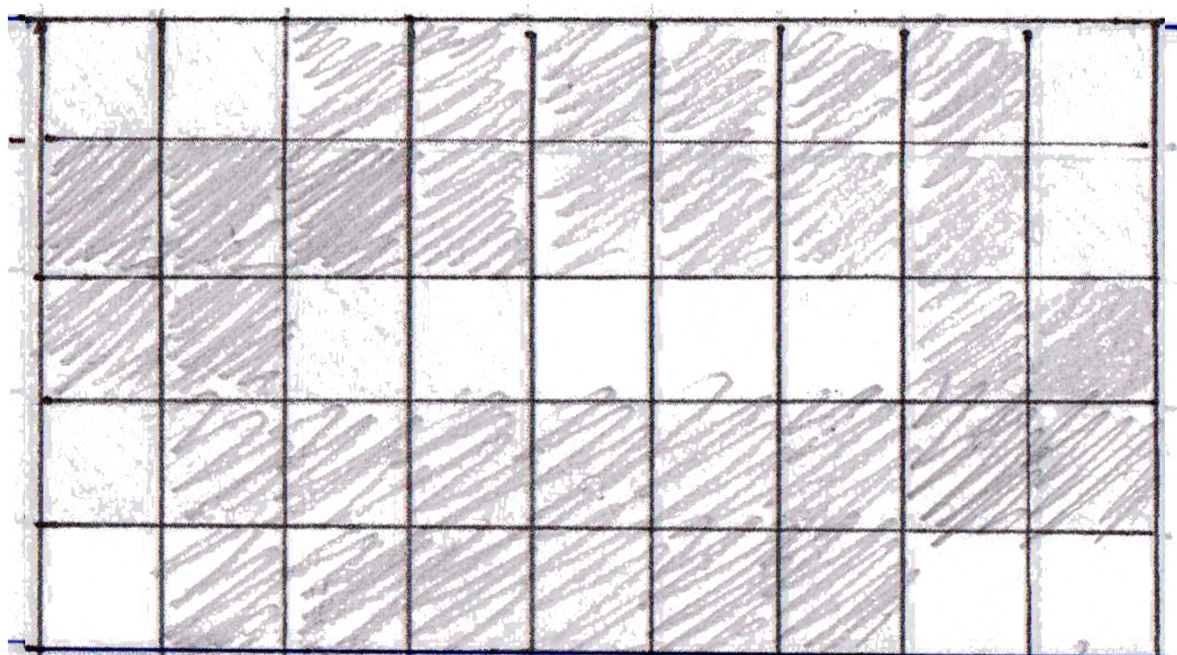
C-1 Random 1 block = 20ft



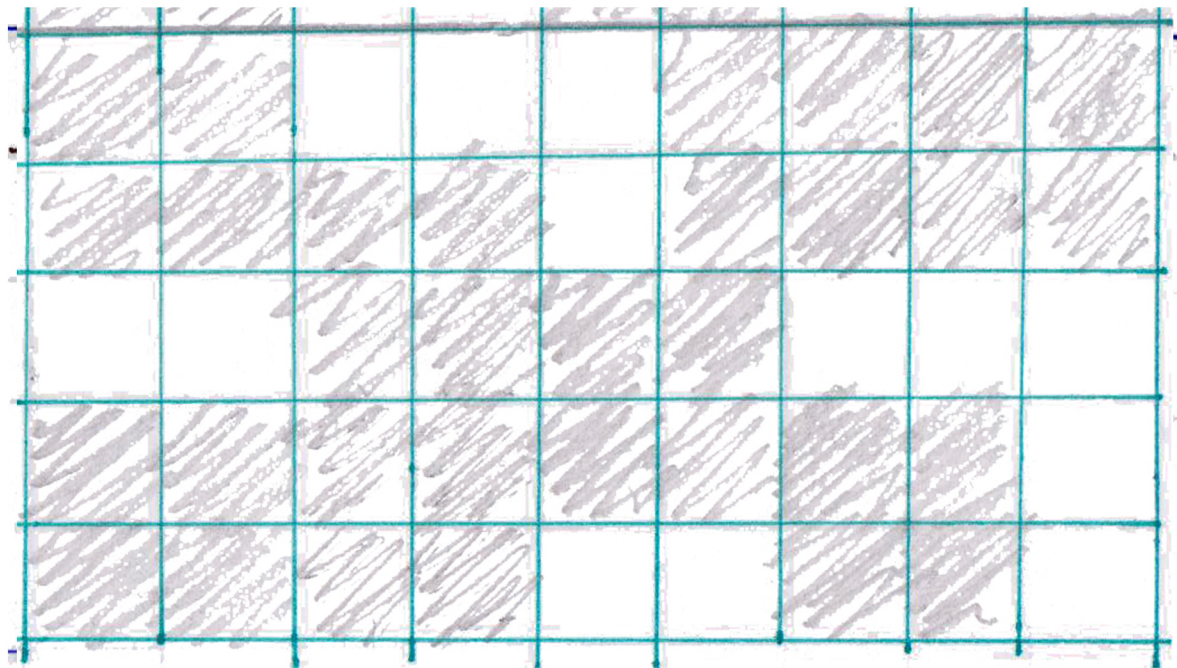
2x2 sets



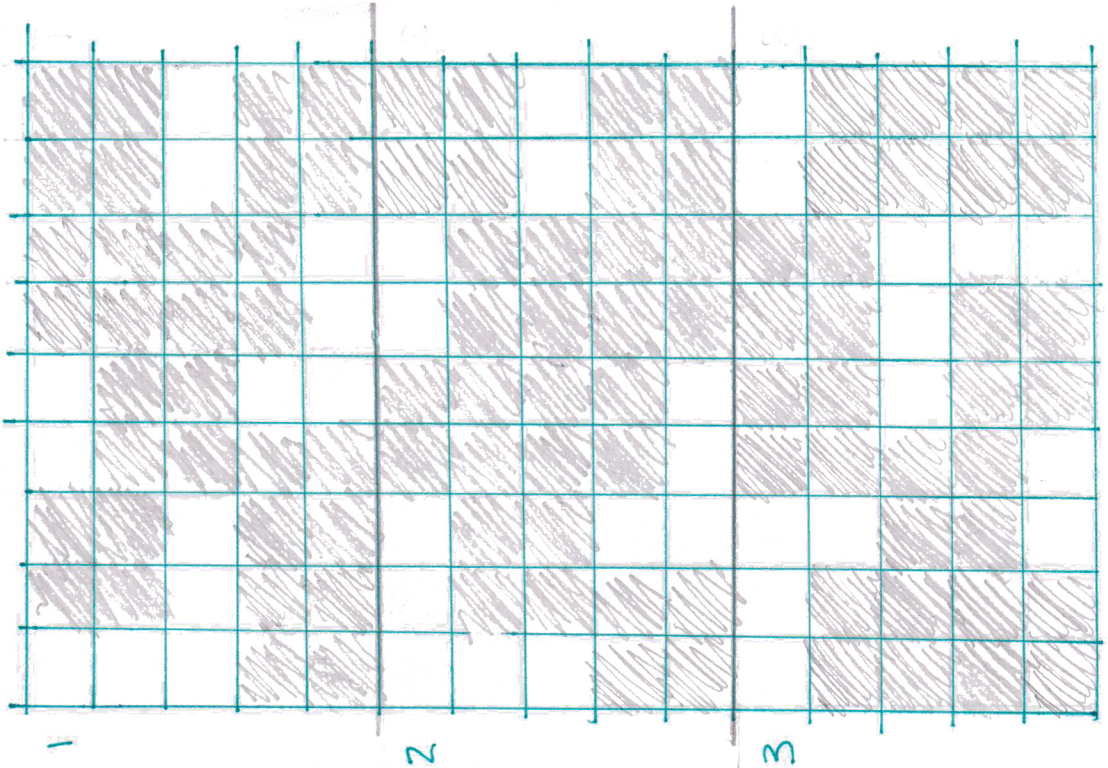






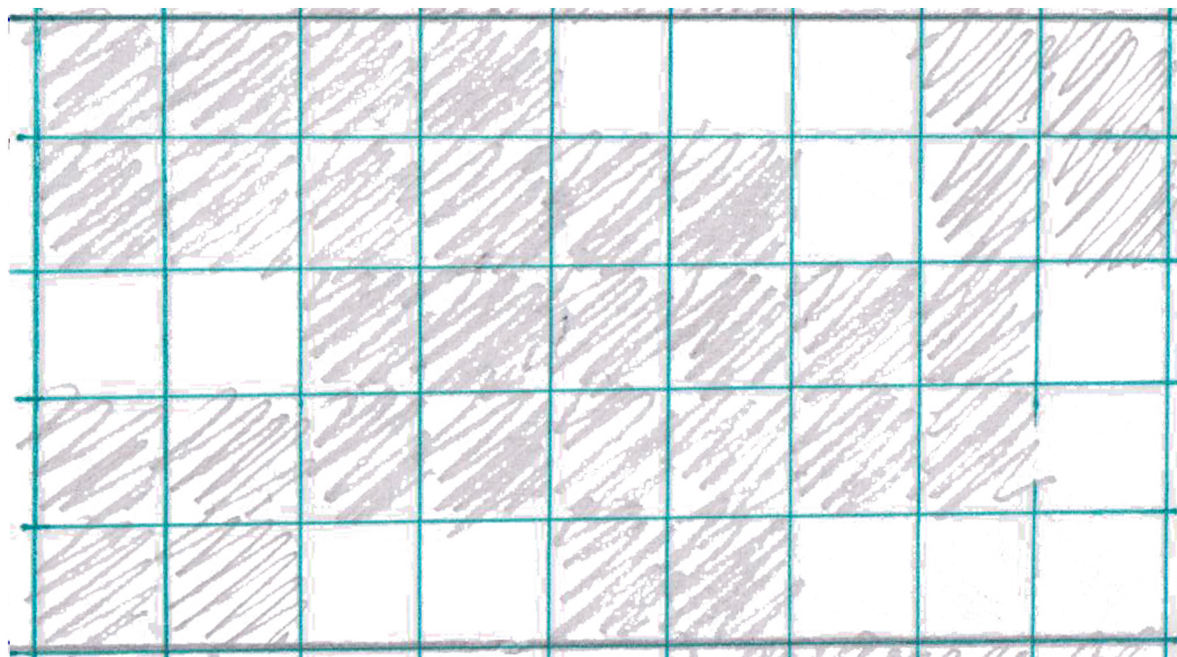


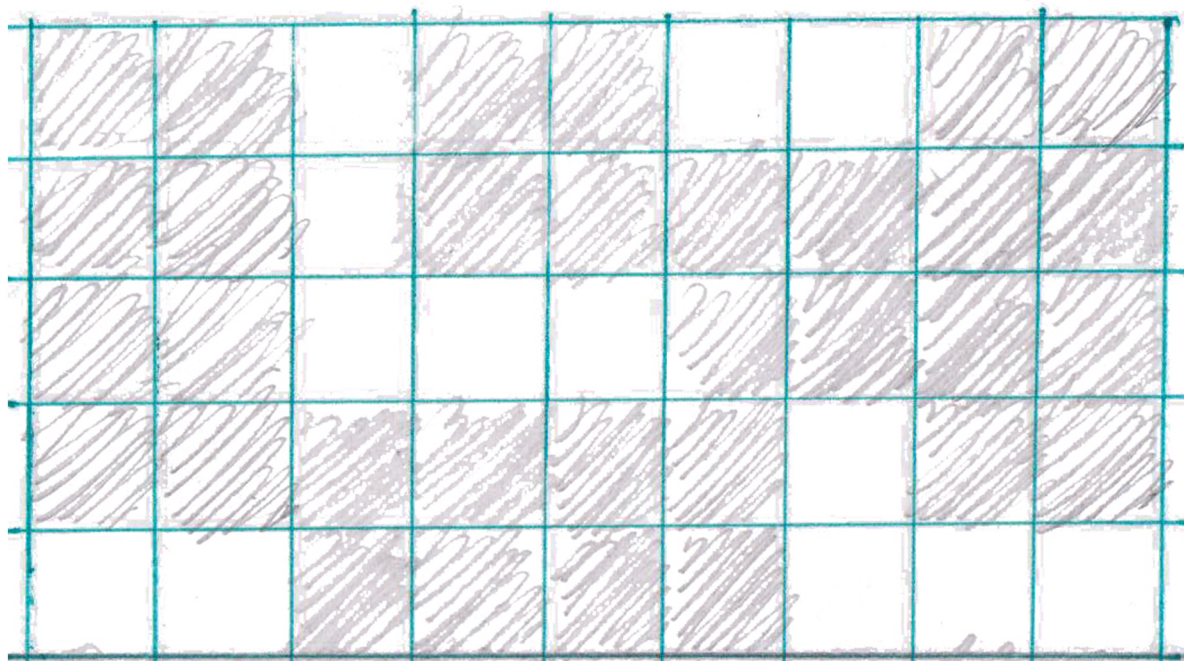
C-2 Random 1 block = 20ft



2x2 sets



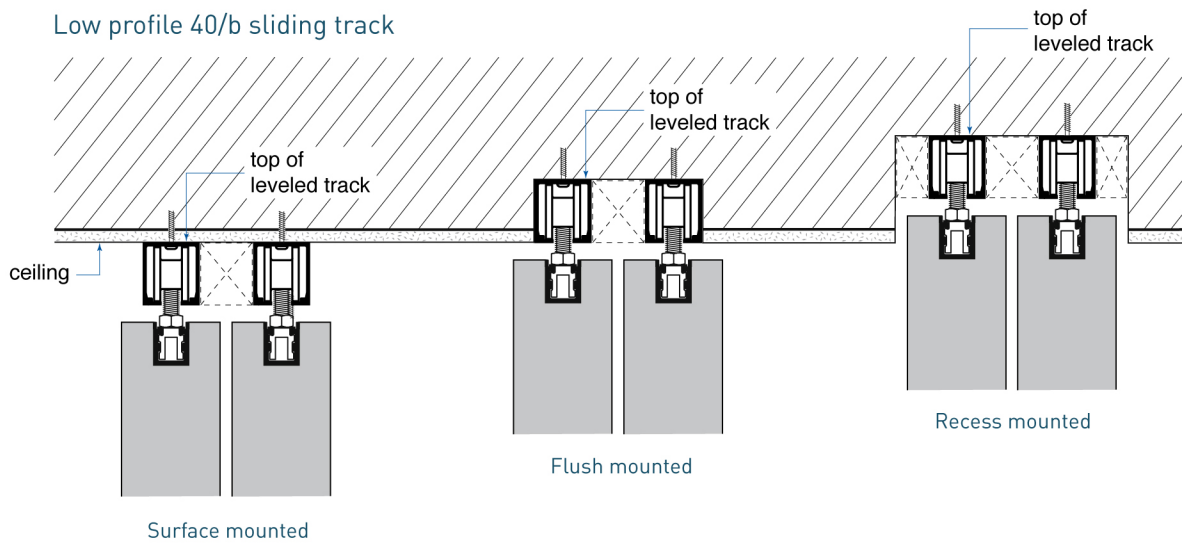
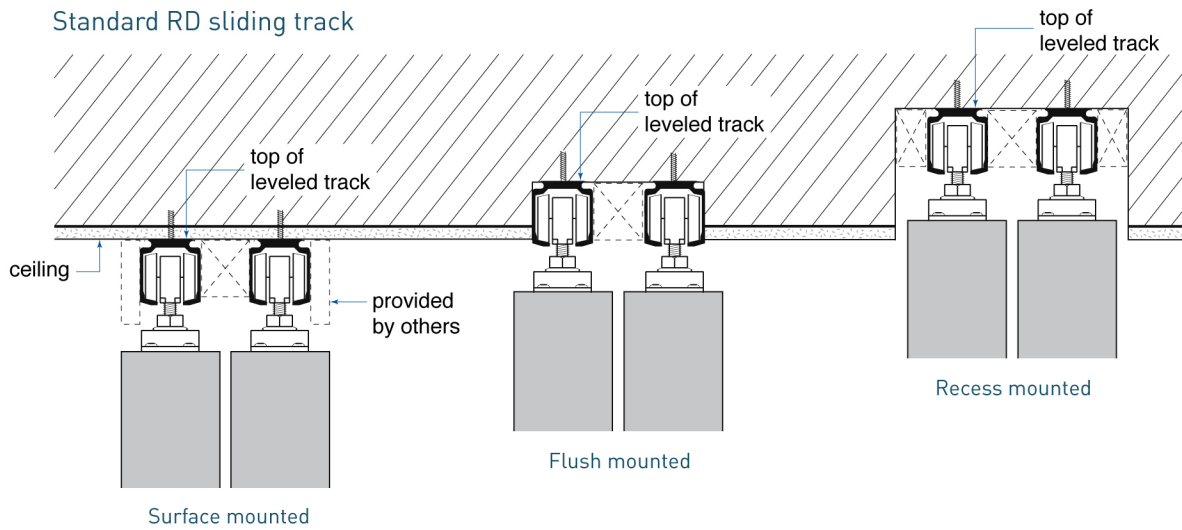




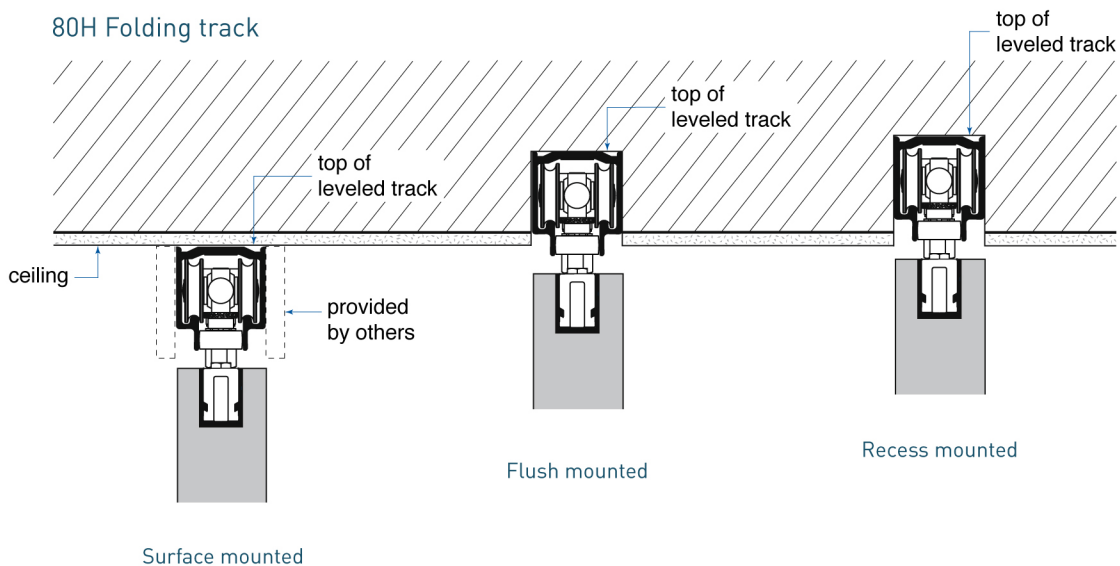


## Surface, Flush, Recess and Wall Mounting Options

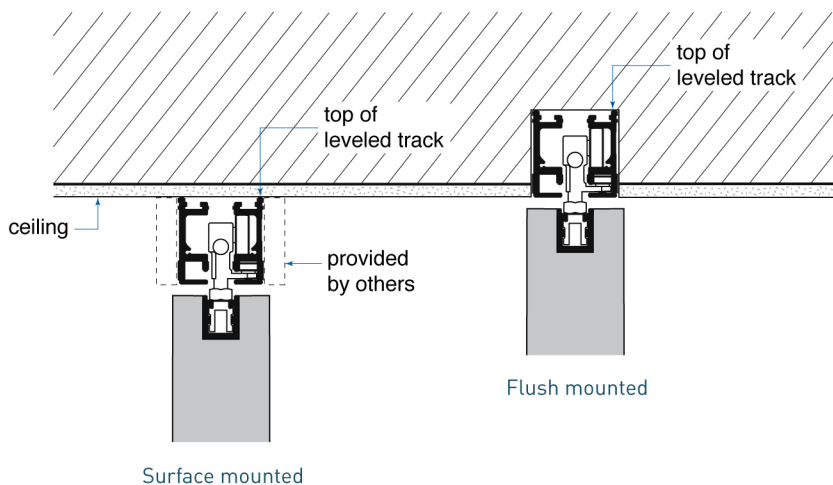
Mounting options depend on the desired install aesthetic or structural limitations (as with post tension concrete ceilings, etc.) Regardless of installation type, system height measurements are always from top of leveled track (may or may not coincide with ceiling height). (Installers can place blocking in spaces between tracks and install fascia to minimize track visibility.)



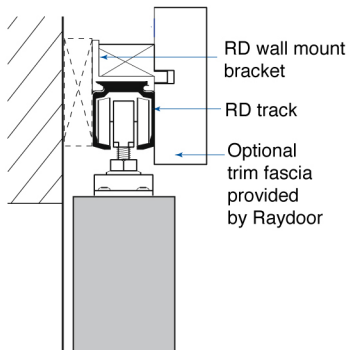
### 80H Folding track



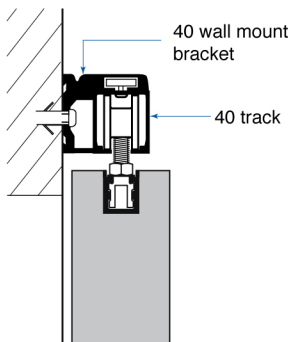
### 60/H Sliding Stacking track



### Standard RD Sliding track



### Low profile 40/b Sliding track



#### Wall mounting

Our standard RD sliding track and our low profile 40/b track can be wall mounted using brackets. Only available for S1 and S2S systems.



**CHOOSE HOW YOU WANT THE SYSTEM TO OPERATE**

System configuration represents our family of dividing solutions, which include Sliding, Bypassing, Pocket, Folding, Pivoting, Fixed, and Stacking walls and doors.

Choosing a system configuration is THE primary design consideration when planning how you intend to use the space. Systems are listed below. Those with a **QS** are part of our QuickShip program. More details on QuickShip can be found on page 45.

(S) Sliding **QS**



S1 sliding/1 panel

An easy-to-install option for stylish control of passage between any pair of spaces, available ceiling- or wall-mounted.

(SB) Sliding Bypassing **QS**



SB2 sliding bypassing/2 panel

Relies only on two tracks regardless of panel count, guaranteeing a narrow head width. Ideal for room dividing and closet enclosures.

(SW) Sliding Wall **QS**



SPW3 sliding pocket wall/3 panel

A true wall-to-wall room divider and a Raydoor classic... Proprietary telescoping hardware invisibly links the lead panel to all trailing panels. Ideal for high-traffic lofts and conference rooms.

(SWW) Sliding Wing Wall **QS**



SWW3 sliding wing wall/3 panel

Similar to the classic Sliding Wall, but with a key benefit of stacking all panels to the side, creating a wider, barrier-free opening.

(SP) Sliding Pocket **QS**



SP1 sliding pocket/1 panel

This installation preserves space for a wall-mounted monitor, art or furniture. Integrated hardware ensures smooth and reliable action.

(SPW) Sliding Pocket Wall **QS**



SPW2 sliding pocket wall/2 panel

When fully extended, cleanly divides galleries, large halls and gyms, and when fully retracted, disappears into wall.

(SSPE) Sliding Stacking Perpendicular



SSP4 sliding stacking perpendicular/4panel

Features many stacking and storing options so you can slide the panels straight or turn a corner. Perfect for making a guest bedroom or conference area.

(SSPA) Sliding Stacking Parallel



SSPA4 sliding stacking parallel/4panel

The sliding stacking perpendicular or parallel system only needs one track and is perfect for tight spaces where multiple bypassing or folding doors wouldn't work.

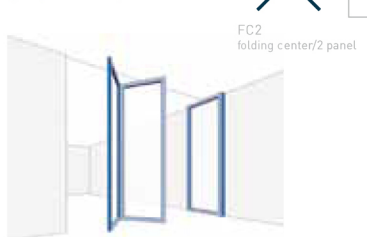
(PV) Pivoting



PV2S pivoting/2 panel symmetrical

Perfect for trimless openings, pivoting systems can be applied from public spaces to private baths, where simple entry is needed. Doors can pivot from the end or more central on the panel.

(FC) Folding Center



FC2 folding center/2 panel

A room-divider for low-traffic spaces. A true flex wall for the occasional meeting, event or guest room.

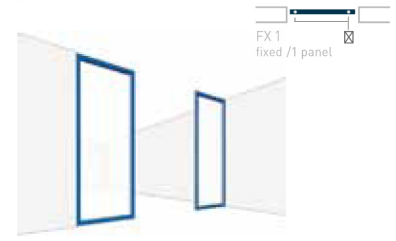
(FE) Folding End



FE2 folding end/2 panel

Similar to a traditional bi-fold, its effective for closets and spaces where doors must be pushed out of the way to maximize clearance.

(FX) Fixed

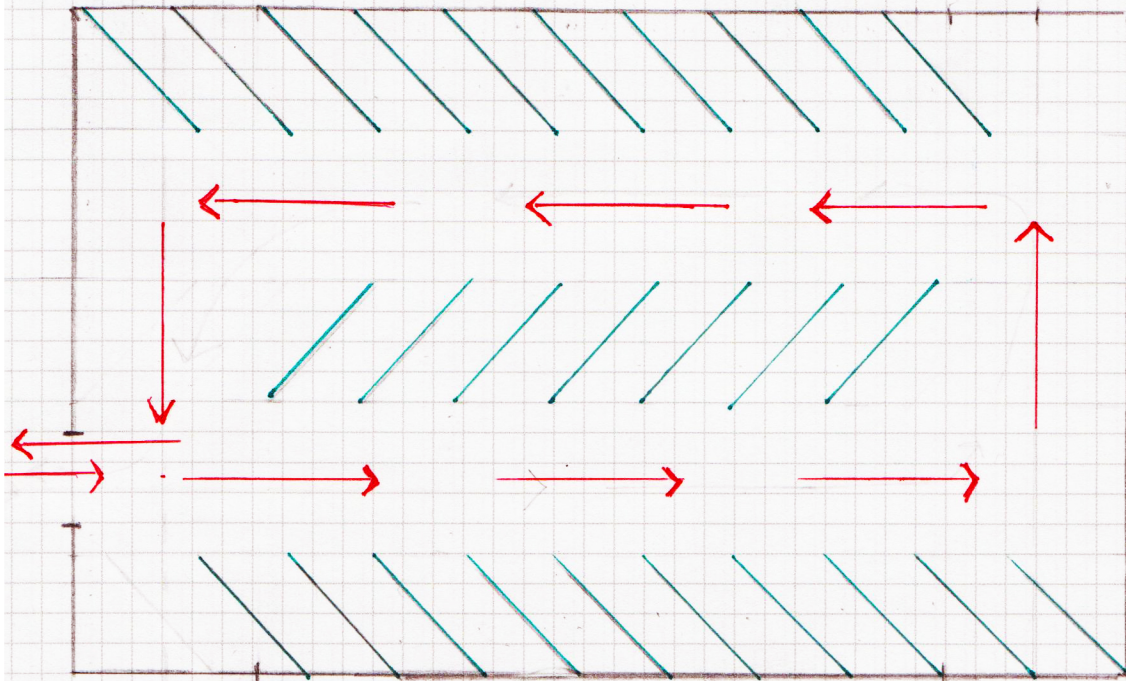


FX1 fixed/1 panel

Wherever a solid wall would be better off translucent. Fixed panels can be mounted freestanding or paired with other systems to continue a design aesthetic where operation isn't needed.

PARKING LOT - 25 SPACES - 45°

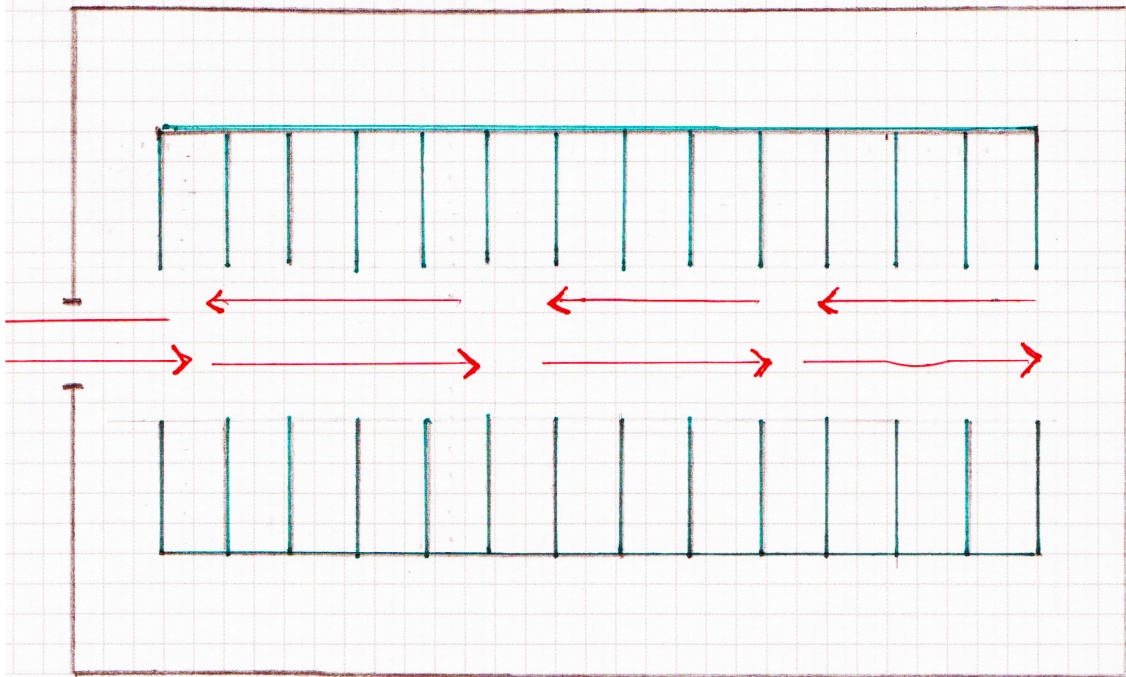
- 15' FROM BASELINE
- 127" ALONG CURB
- 15' OFFSET
- 19' BACKOUT



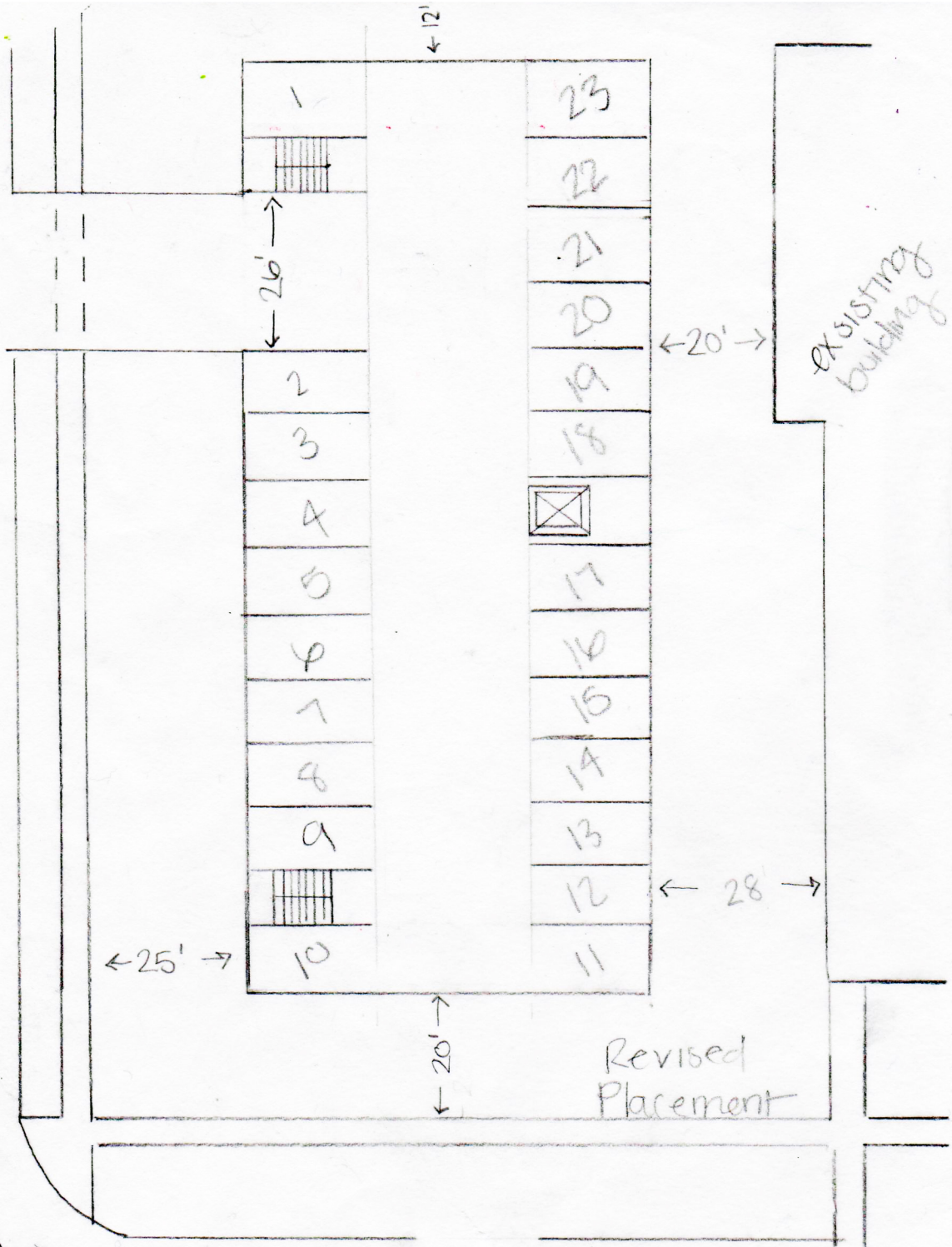


PARKING LOT - 26 SPACES - 90°

- 18 FROM BASELINE
- 9 ALONG CURB
- 0 OFFSET
- 24 BACKOUT



3



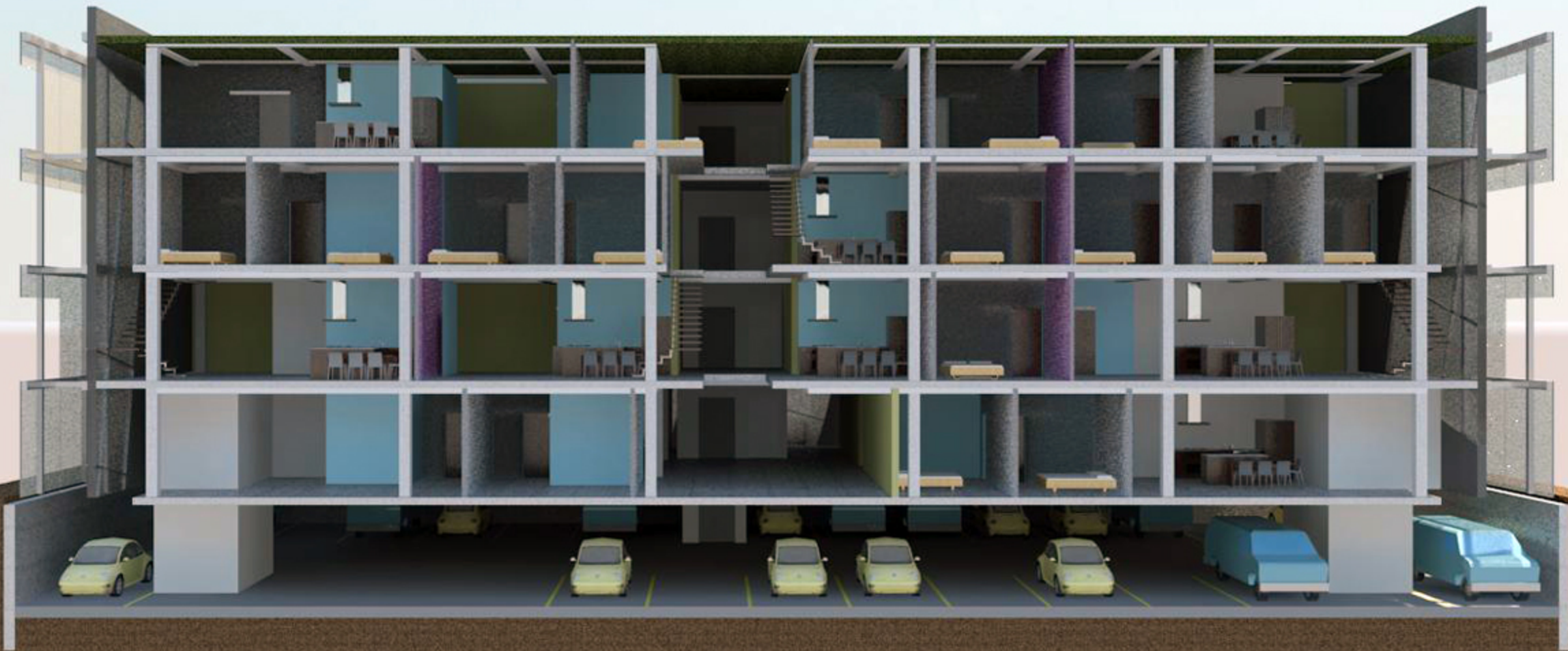














SITE ANALYSIS  
PARK / GREENERY  
HOSPITAL / CLINIC  
ZUMBRO RIVER  
VIEWS

