



Life, Learning and **SUSTAINABILITY**

By: *ashley Grace Martel*

my Thesis

Pre-K through sixth grade school

Three rural towns in South Dakota

School mergers

Displace students

Dying communities

Fading Memories

Abandoned Schools

One school centrally located

Made of materials of the existing schools

Instill a sense of memory

Reduce waste

Keep alive each town

Enrich the lives of the students

Preserve the heart and soul of these communities

problem Statement

In what way can architects instill a sense of sentiment towards sustainability in future generations?

Premises

As architects we contribute to the depletion of our resources.

When people interact with spaces, memories are instilled in them. "When autobiographical memories are evoked, there is reduced analysis of product information" (Baumgartner, Sujana, & Bettman, 1992). Positive memories of a space can comfort us and influence our future decisions.

Our communities have resources, resources which many other countries live without. With those resources we can make advances that will affect future generations.

A site has many resources that can be overlooked, that when used to their fullest potential can reduce the depletion of our non-renewable resources.

Through creative use of its site, this thesis will reduce the depletion of our non-renewable resources in a way that will engage the community and instill a sense of sustainability in generations to come.

— IDEA —

There is no time like the present to take architecture to the next level and help this world in need. Architects can help those in need through sustainable designs that resist depleting our most precious resources and preserve that natural beauty of the world around us. Through design ingenuity and engaging the community and its sense of connection, we can instill a sense of sustainability in generations to come. As a result of the latter, they too can have the best of both worlds, technology and nature.

— JUSTIFICATION —

KEYWORDS

future
community engagement
memory
natural resources
need
sentiment
resourceful
school
site
sustainability







Education is always happening

Concept of Self

Link between child & society

Daylighting & flexible space

Everyone is different

Importance of History

Memories

Coping

Distress influencing decisions

Community Involvement

Building Community Halls from what they had

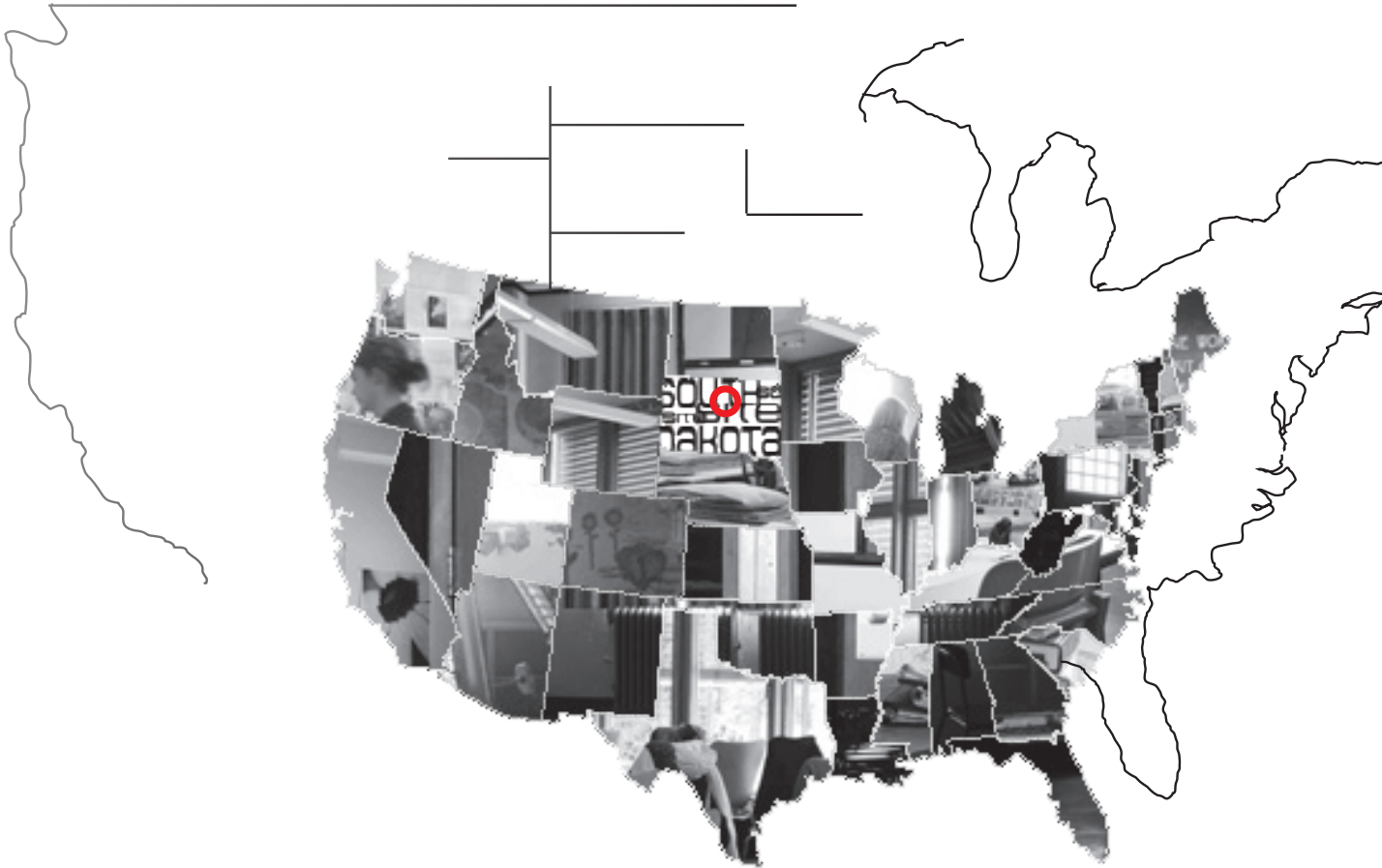
Deconstruction

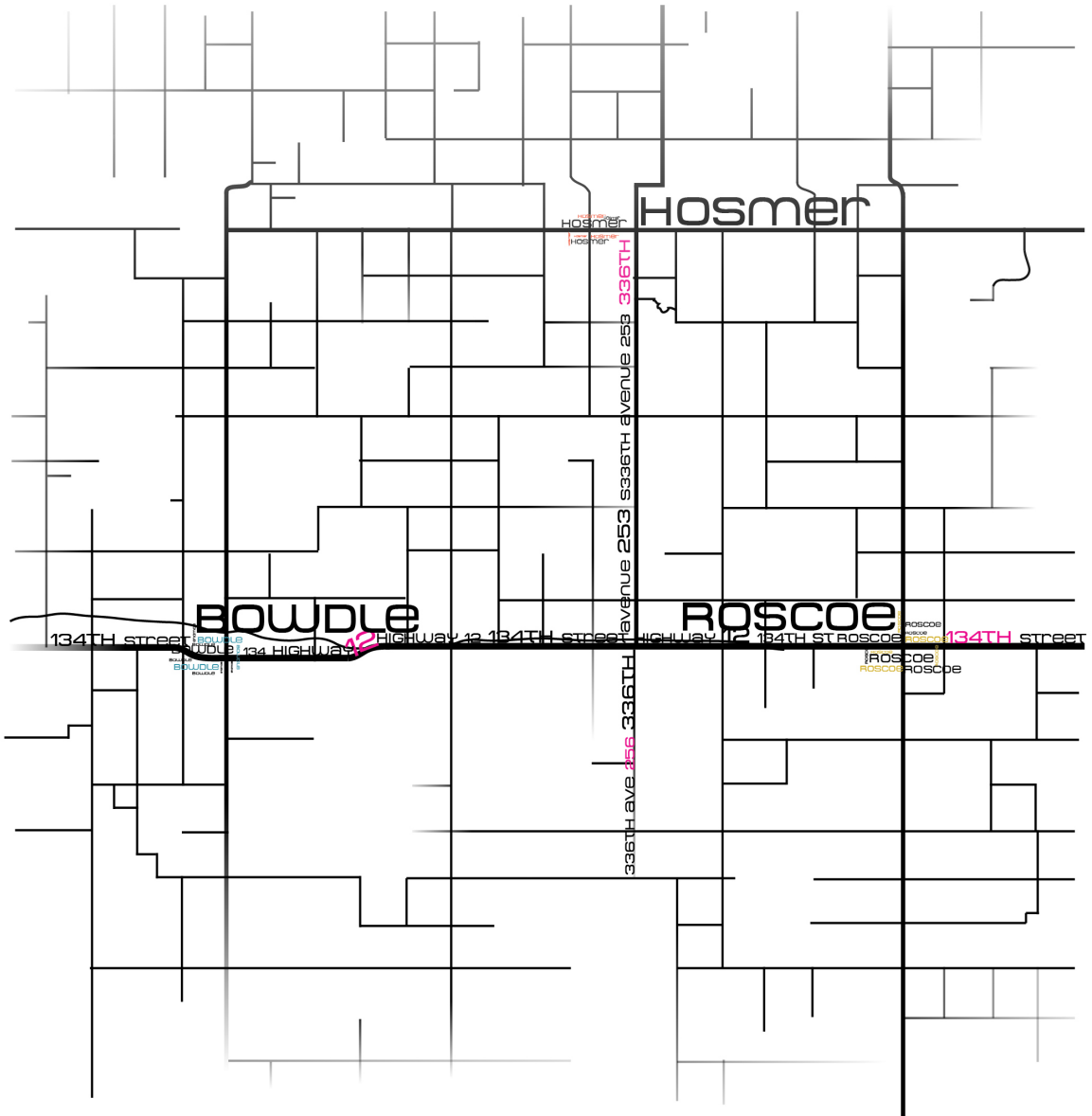
136 million tons

95 percent

Roman Roads

the *Research*





HOSMER

BOWDLE

ROSCOE

134TH STREET

134 HIGHWAY

134TH STREET

336TH AVENUE 253

336TH AVENUE 456

HOSMER, SD

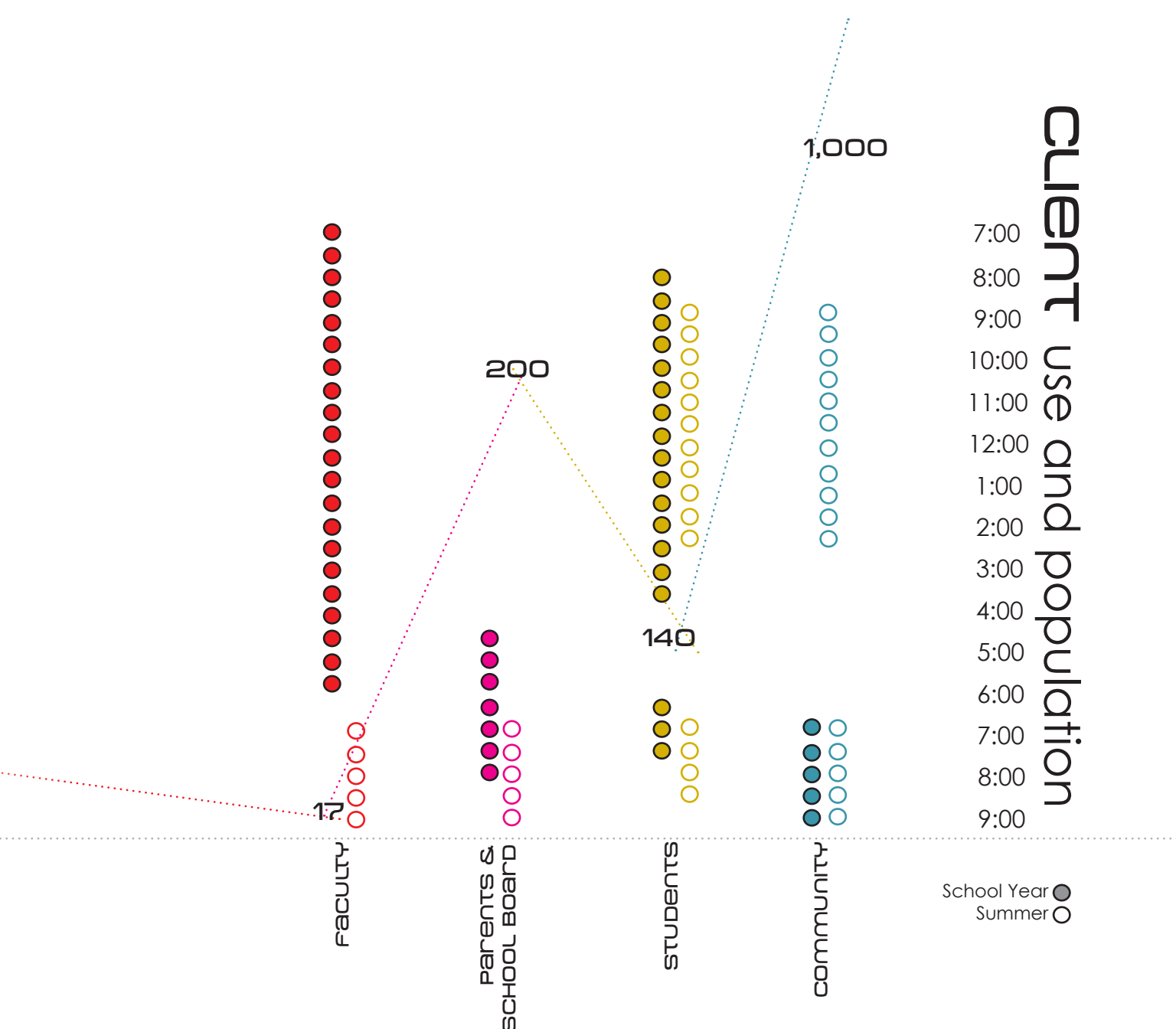


BOWDLE, SD



ROSCOE, SD

client use and population



German Russian

Farming

Railroad

Tent

Above a merchant Shop

Conveniently located Schools

brick Structures

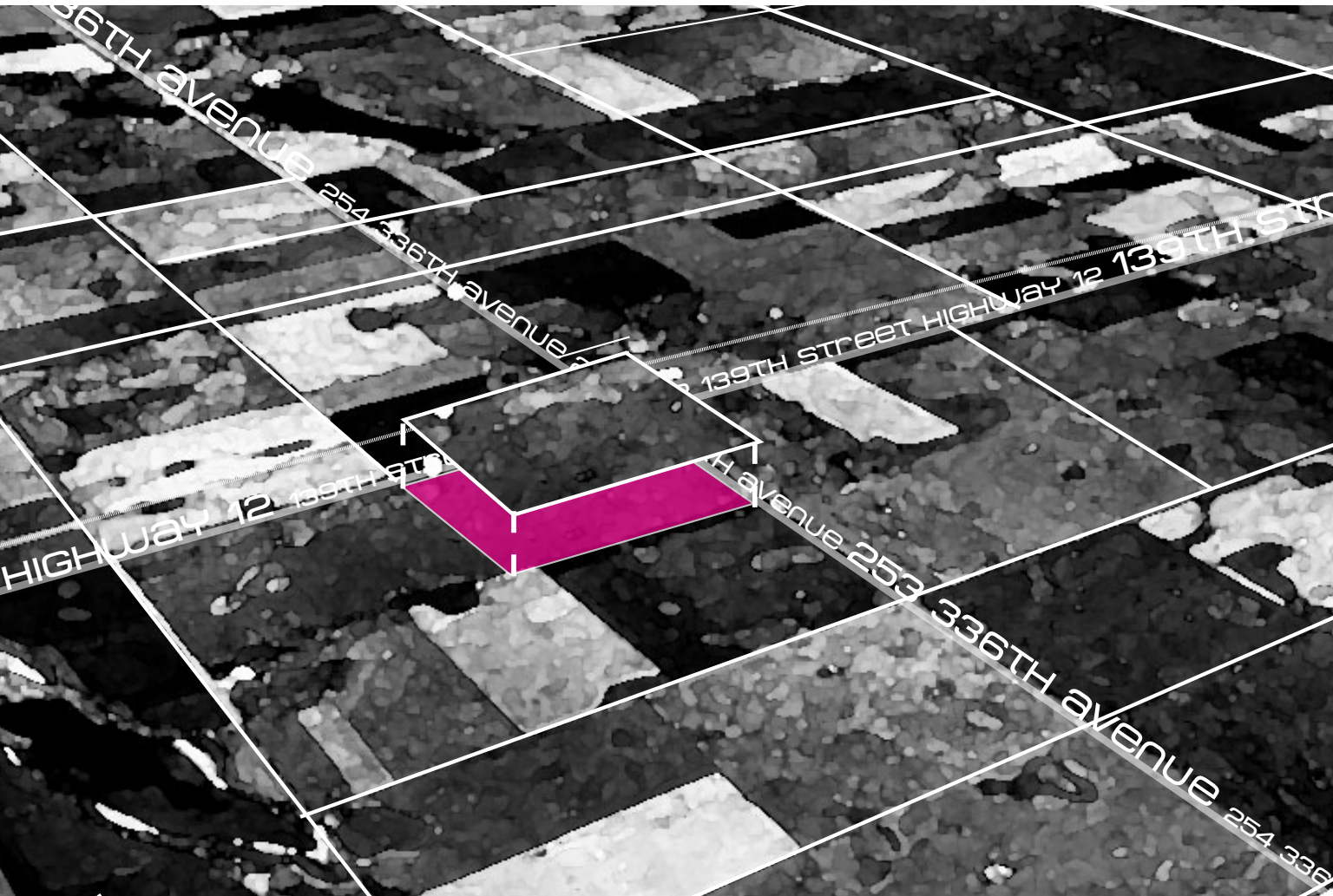
Transportation Hub

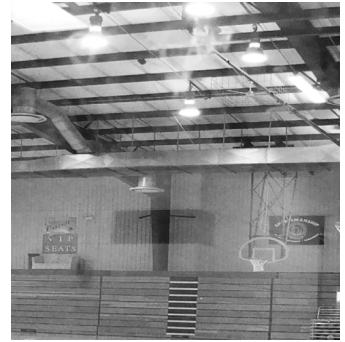
Communities look to each other

Gretna

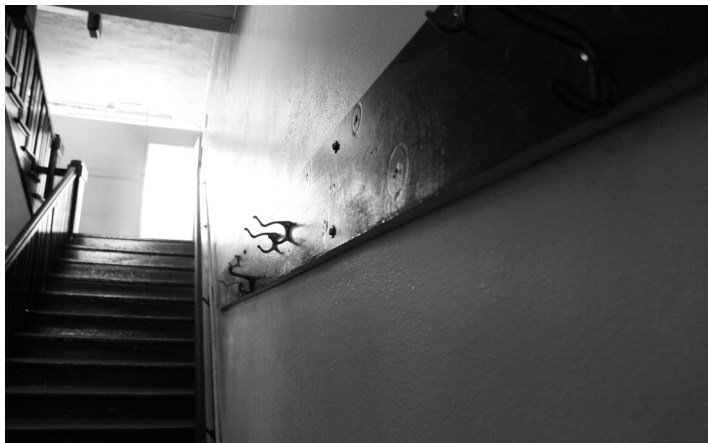
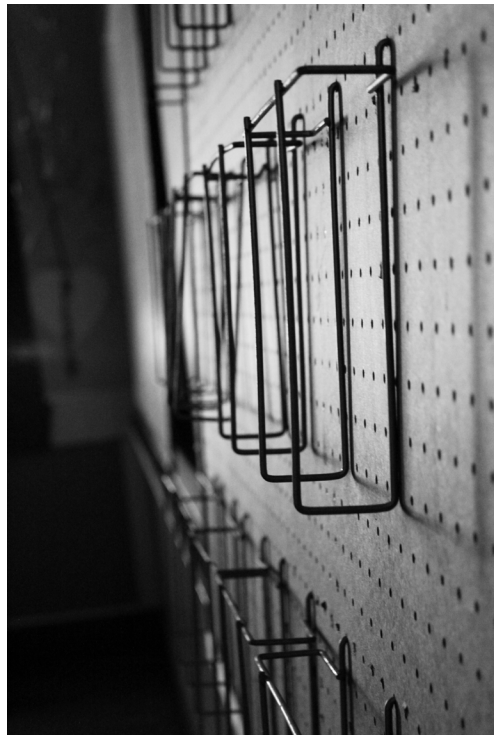
HISTORICAL Context

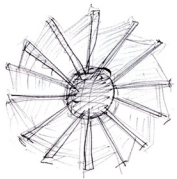
SITE Context











1



2



3



4



5



6



7



8



9



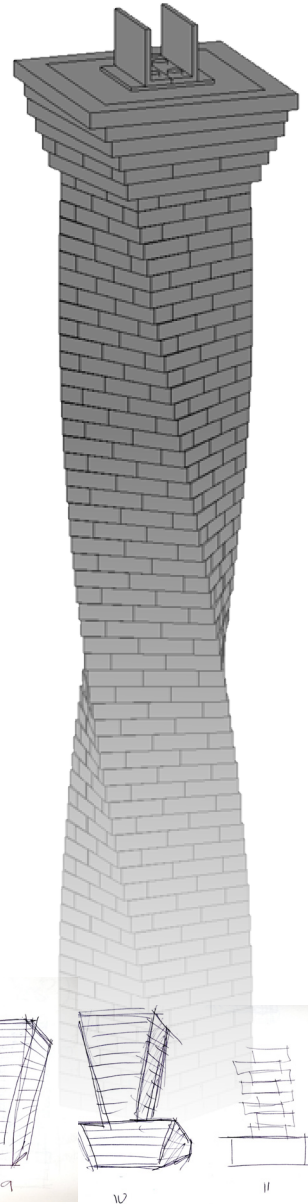
10

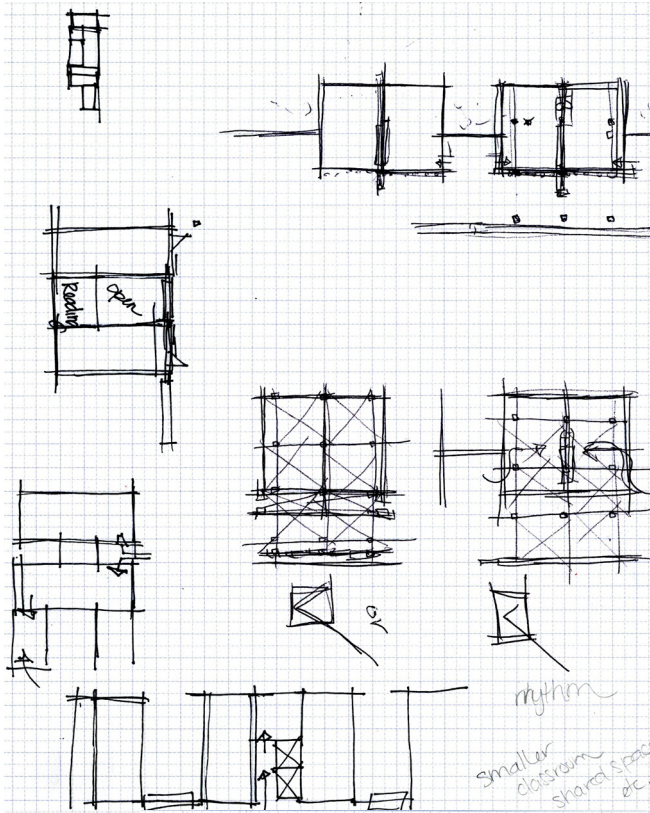


11



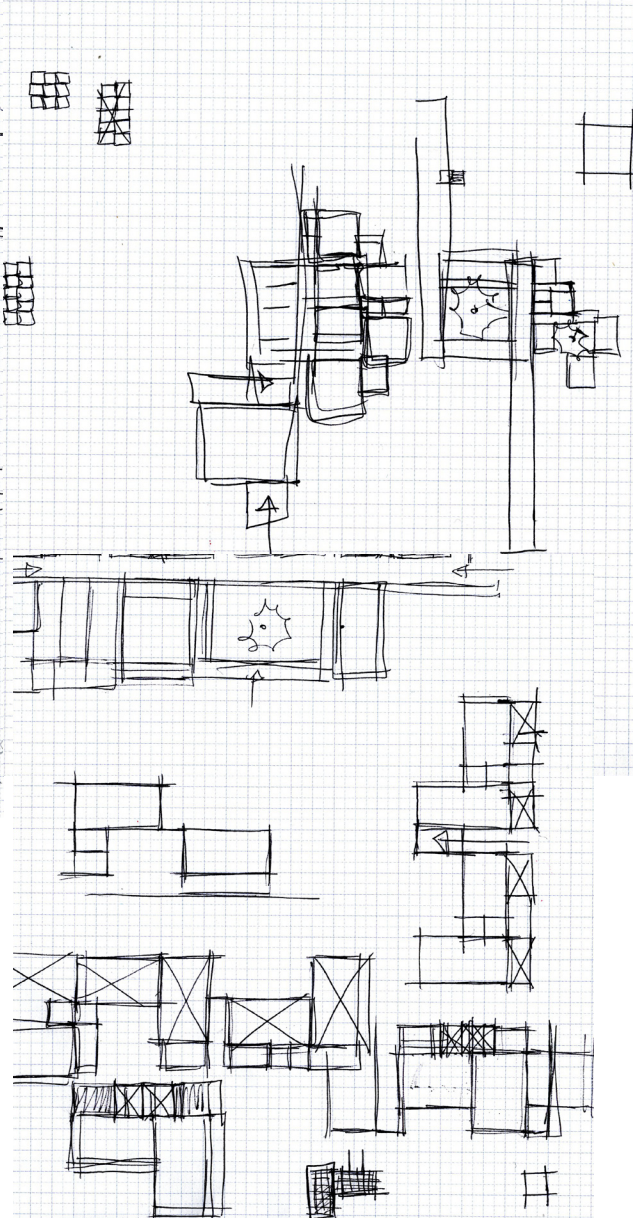
12

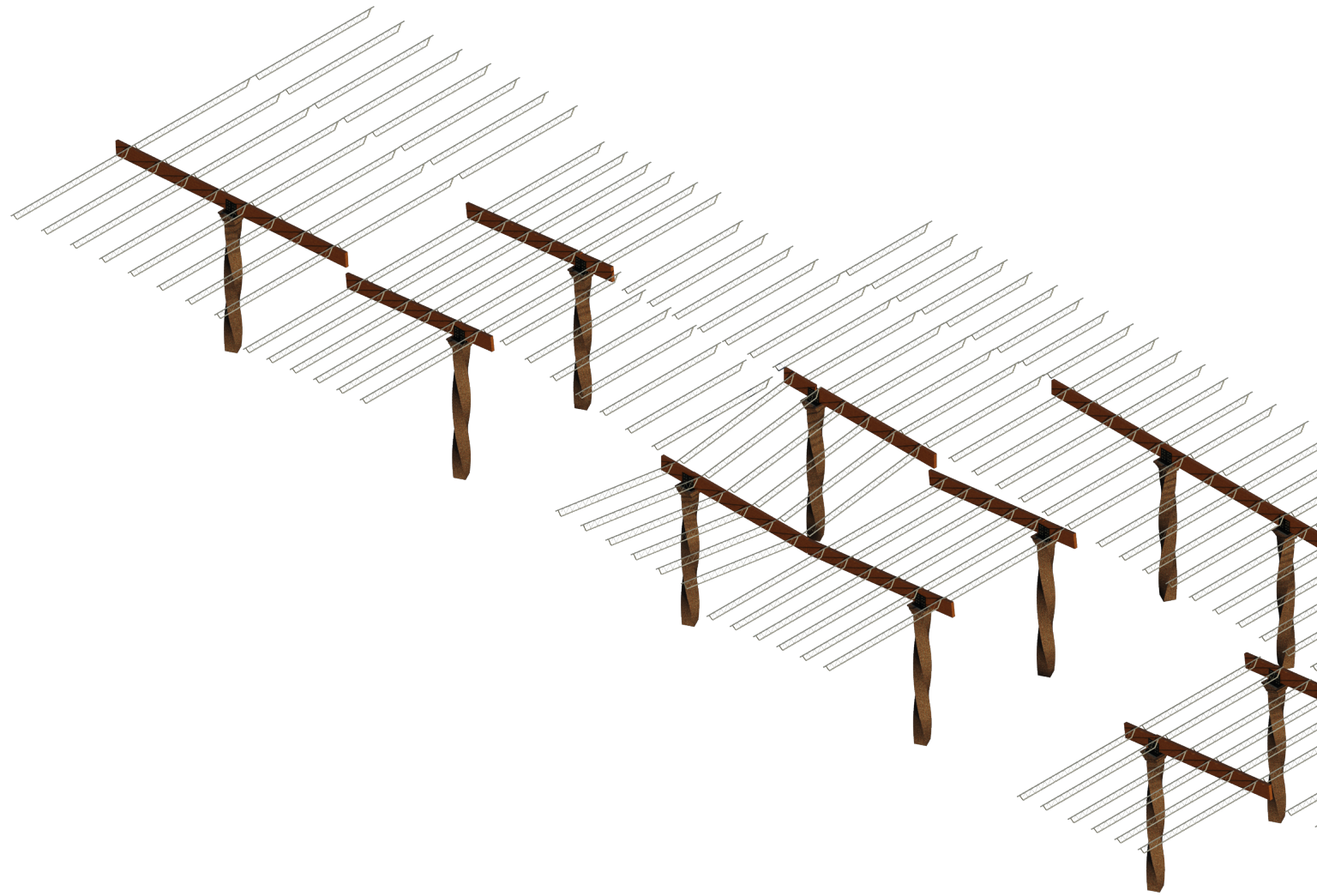




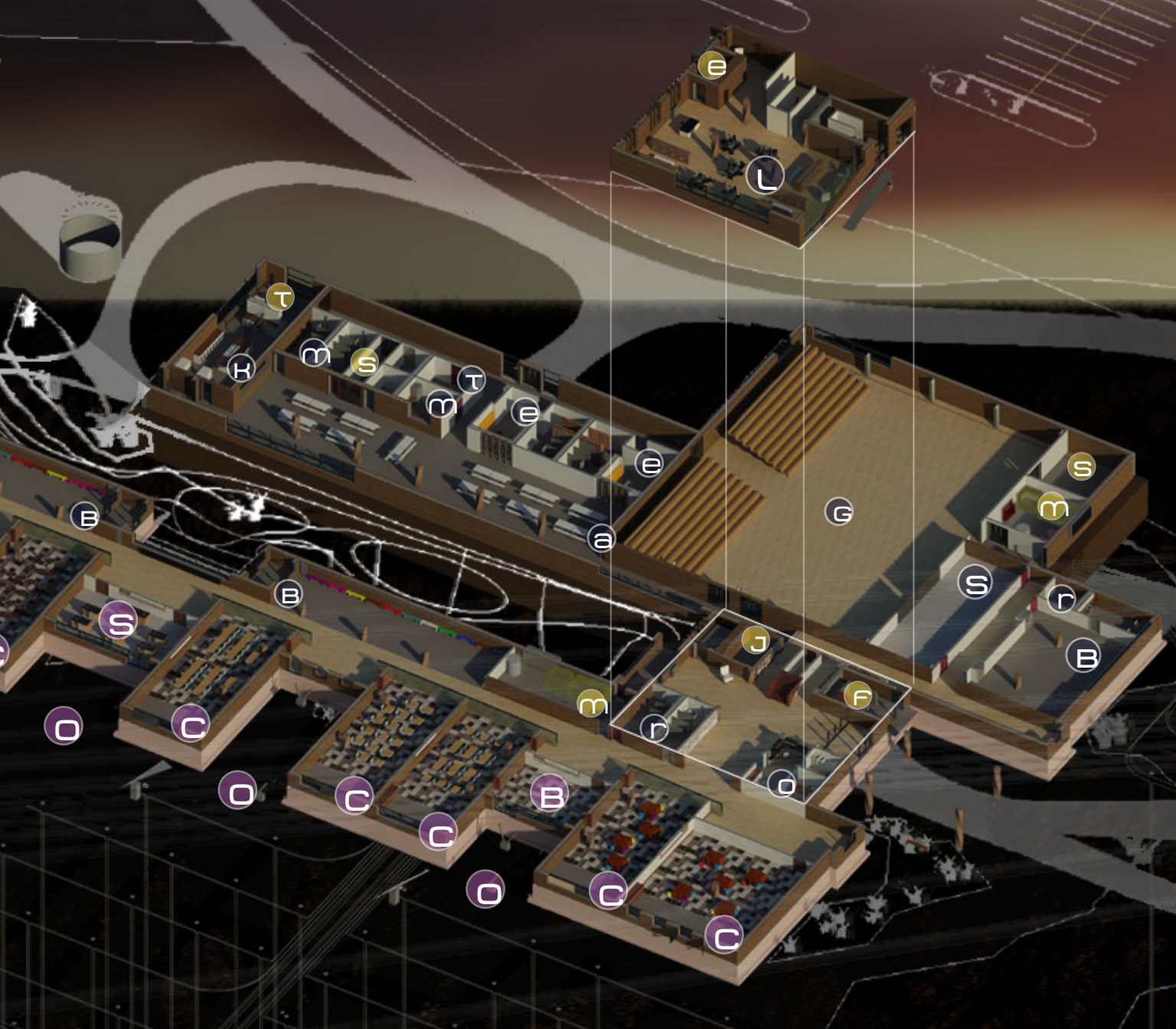
mythm
smaller
closetroom
shared space
etc.

glass?
compact/surface area?
landscaping?
Bathroom?





STRUCTURE



e

L

T

H

M

S

T

M

e

e

a

G

S

M

S

r

B

B

S

B

J

F

m

r

G

O

C

O

C

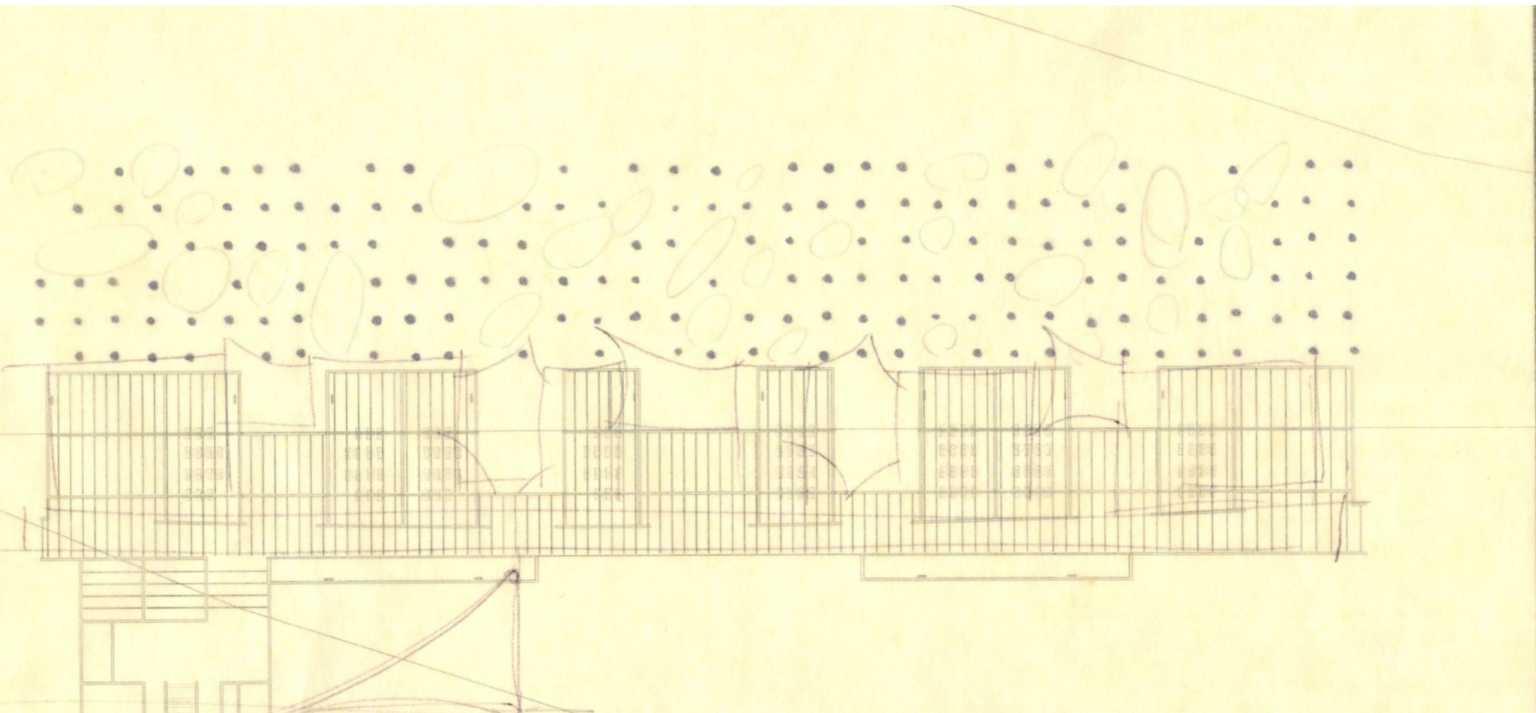
C

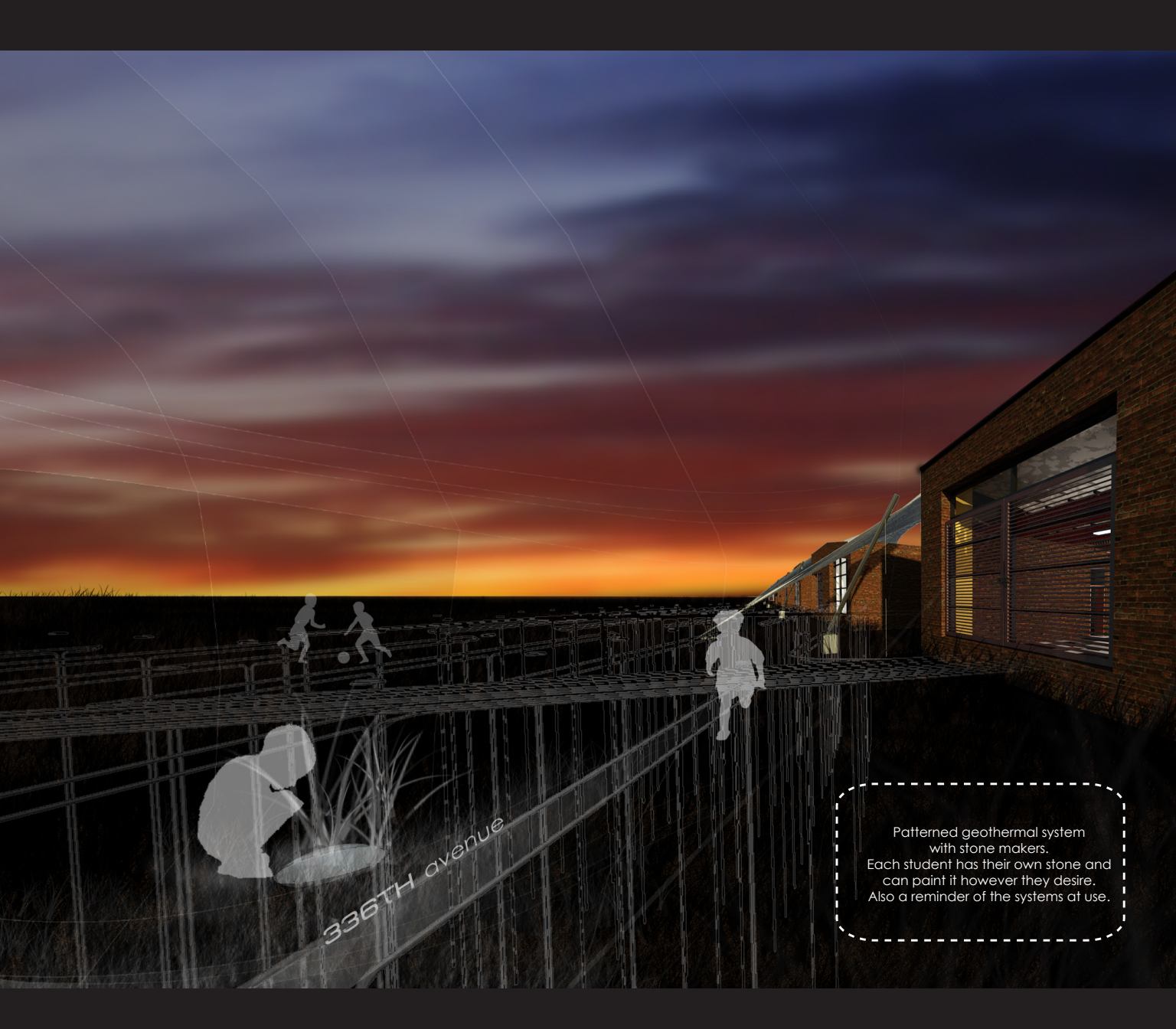
B

O

C

C





336TH avenue

Patterned geothermal system
with stone makers.
Each student has their own stone and
can paint it however they desire.
Also a reminder of the systems at use.



W
F
SP
SM



W
SP
SM



SM



F



F
SM



W
SM



SM



F



F
SM



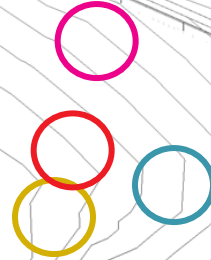
SM



F
SM



SM

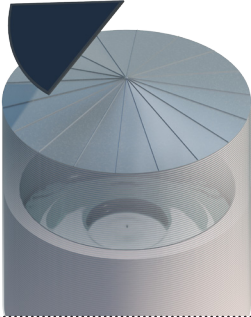


VEGETATION

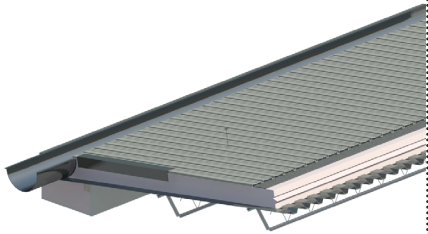


water collection

storage



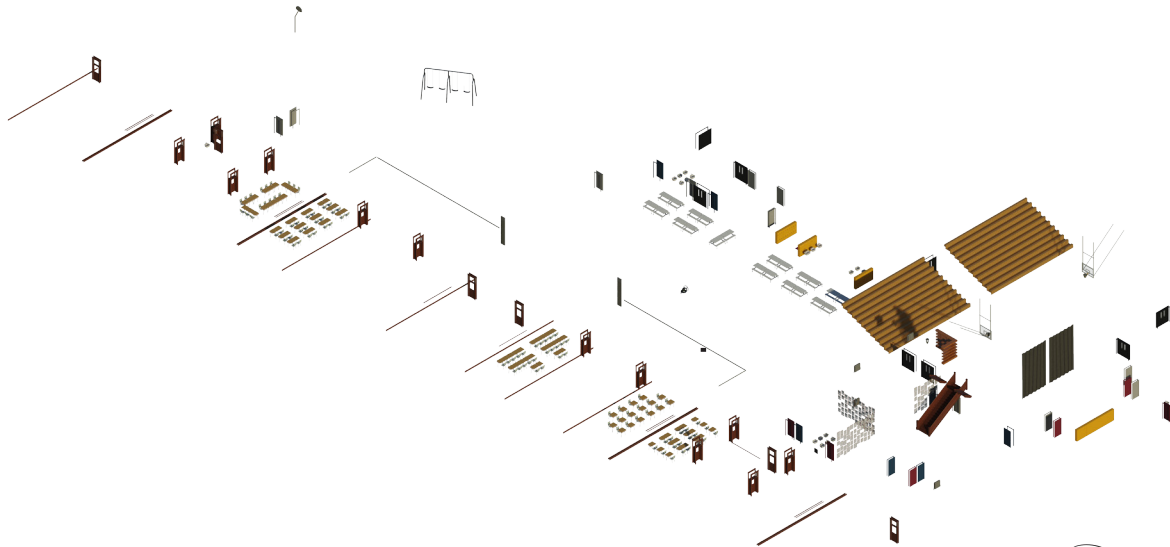
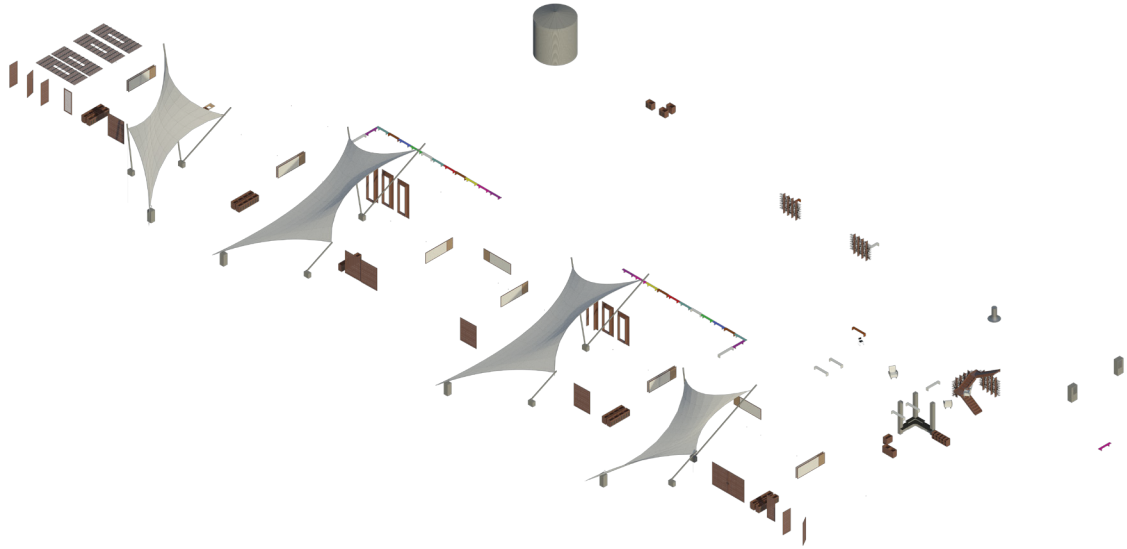
collection



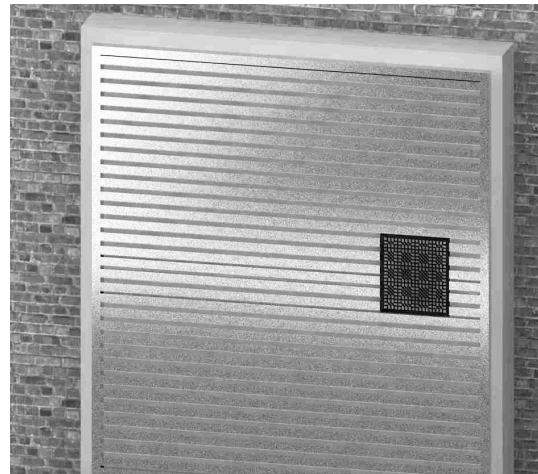
rain gardens



ADAPT



Reuse





STEEL WEB JOISTS

from structures in Hosmer, Roscoe, and Bowdle

REUSED GUELAGMS

from structure in Bowdle

COLUMNS FROM REUSED BRICK

from structure in Bowdle, Roscoe, and Hosmer

**GYM STRUCTURE (ROTATED)
FOR ELEMENTRY SCHOOL SIZED GYM**

From Bowdle plus reusing partial existing ductwork as possible

TROPHY CASE MADE OF JOISTS AND GLASS

joists from Hosmer
glass from Bowdle windows

REUSED WOOD CEILING PIECES AS NEW DROP CEILING/LIGHTING SYSTEM

from structure in Bowdle

SHADING STRUCTURE LOUVERS WITH LATCH FROM EXISTING WOOD CONSTRUCTION

from structure in Hosmer

CABINETS FROM EXISTING WOOD ELEMENTS AND GLASS FROM WINDOWS

from Hosmer, Bowdle, and Roscoe

SALVAGED COAT HOOKS AND REFINISHED BENCHES MIXED IN WITH NEW BENCHES

from Hosmer

WINDOW TRIM AND SEAT

from joists in Hosmer

WHITE BOARD from Bowdle and Roscoe

TAG BOARD from Hosmer with new trim

FRONT DASH WITH CORRUGATED METAL FACADE

from surrounding farm

SALVAGED WOOD DOORS, MOLDING & CHALK RAILS

from Hosmer

CLEANED UP DESKS

from all locations

METAL LOCKERS, BLEACHERS, METAL DOOR'S LUNCH TABLES & BASKETBALL HOOPS

from Bowdle

EXISTING BOOKSHELF & STAGE CURTAINS CURTAINS

from Roscoe

MONUMENTAL STAIR CONSTRUCTION FROM REFINISHED STAIR ELEMENTS from Hosmer

FRAME COLLAGE OF PREVIOUS STUDENTS

from all locations

REUSED INTERIOR GLASS BLOCK

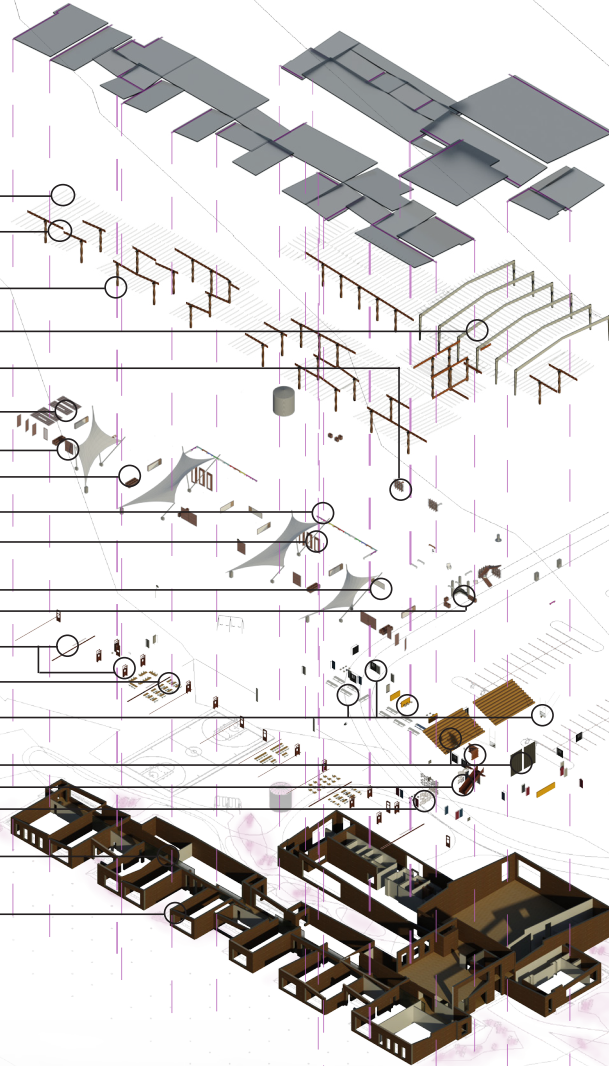
from structures at Hosmer and Roscoe

NEW EXTERIOR BRICK

STEEL STUD

REUSED INTERIOR BRICK

from structures of Hosmer, Roscoe, and Bowdle



- C CLASSROOMS
pre-k to sixth grade + special education
- M MECHANICAL
- B COATS AND BOOTS
- S SHARED SCIENCE ROOM
- A ART ROOM
- B BREAK OUT ROOM
- O OUTDOOR LEARNING SPACE
- O OFFICE
principal/file/work/front desk
- R RESTROOMS
- M MUSIC/BAND/DRAMA ROOM
- S STORAGE
- L LOCKER ROOMS
- K KITCHEN
- T TEACHER'S LOUNGE
- T GYM TEACHER OFFICE
- C CONCESSIONS
- A CAFETERIA
- J JANITOR
- S STAGE
- G GYMNASIUM
- L LIBRARY/COMPUTER LAB
- E ELEVATOR
- F FIRE ESCAPE

