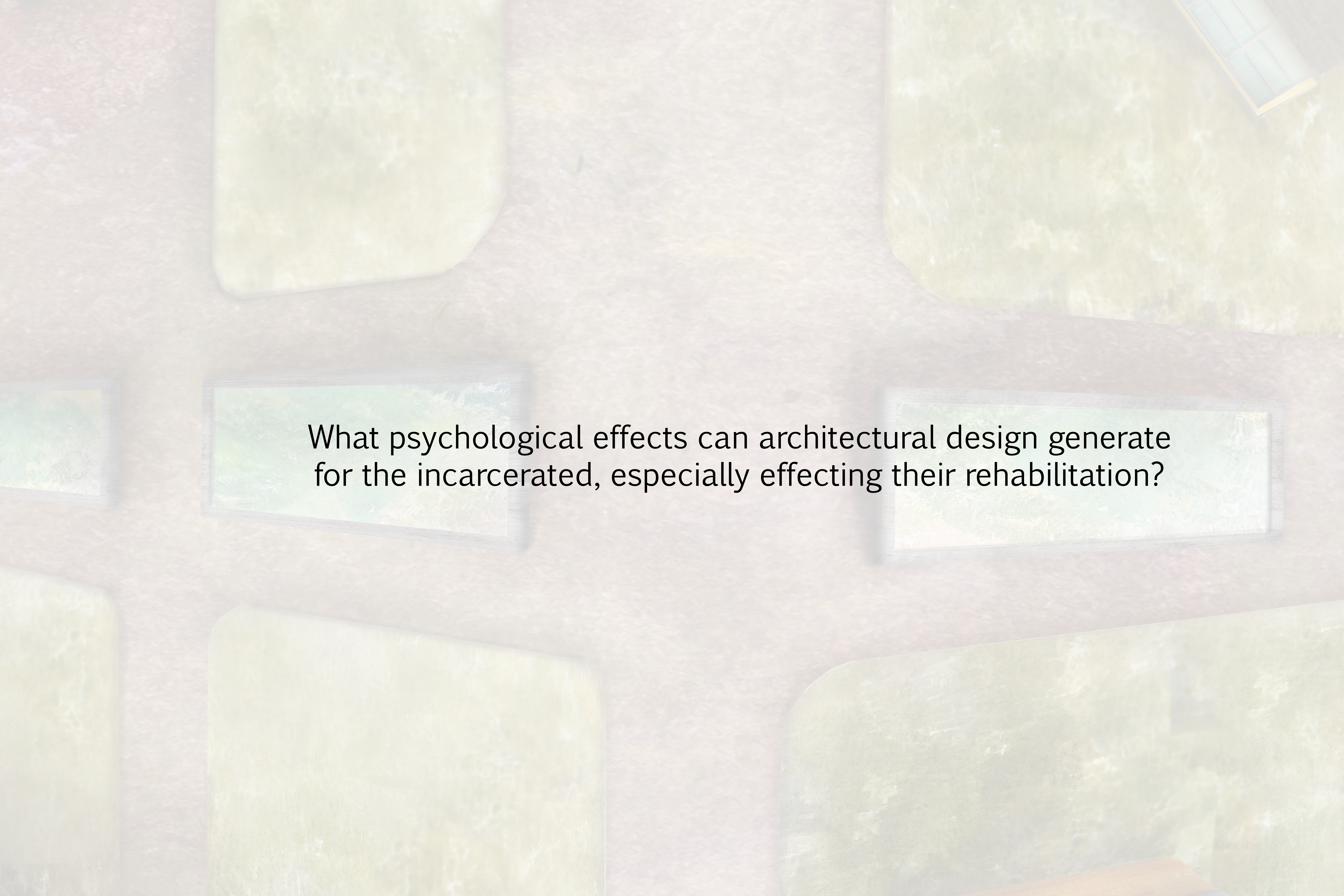


The background is a collage of various textures and colors. It features several large, rounded rectangular shapes in shades of green and yellow-green, some with a mottled, organic appearance. There are also smaller, rectangular framed pieces of abstract art with green and brown tones. The overall composition is layered and textured.

INVESTIGATING HUMANITY

Thesis Presentation
by Morgan Fredrickson



What psychological effects can architectural design generate for the incarcerated, especially effecting their rehabilitation?

1970 < 200,000

2011 = 2.3 million

Vast majority are *non-violent* drug offenses

\$36,000 / \$83 BILLION

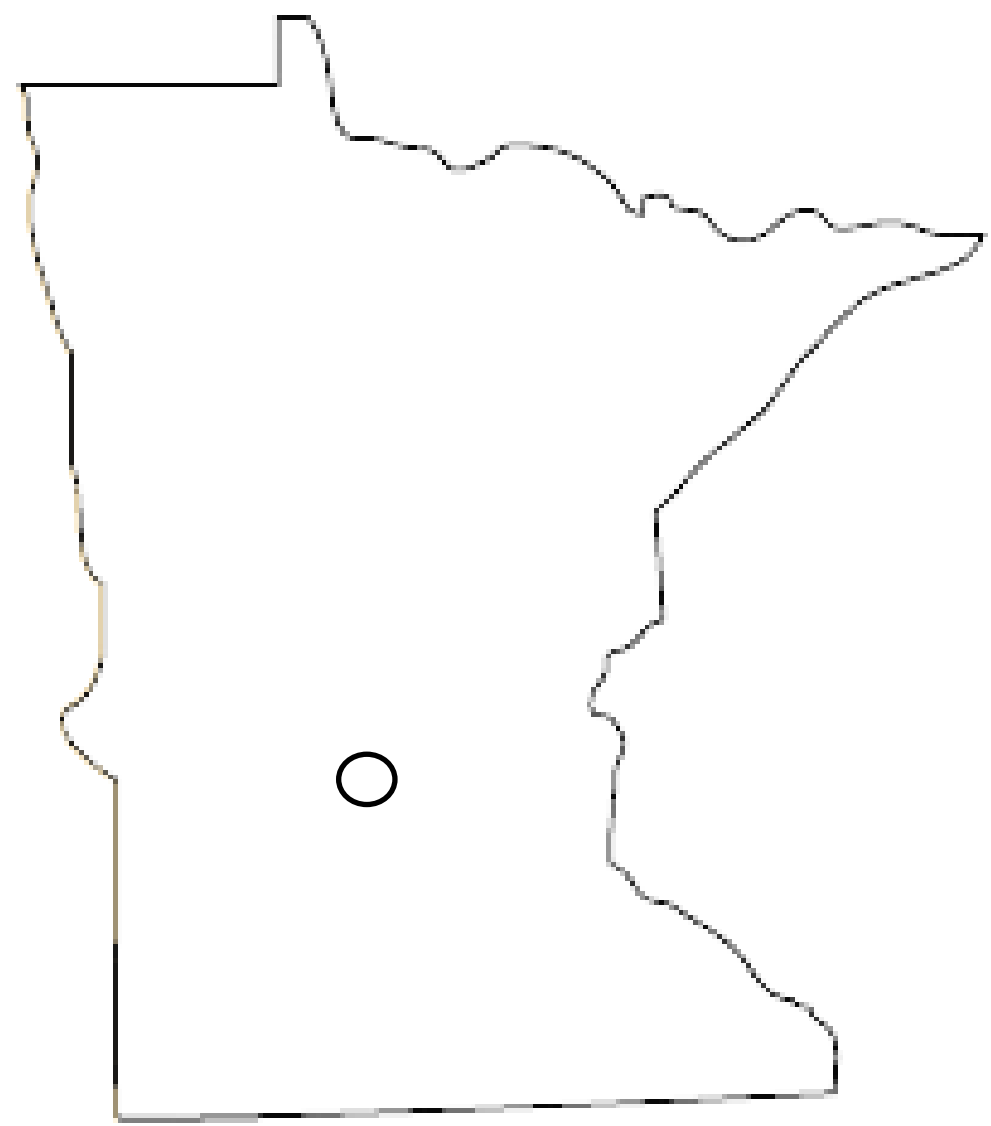
**SHOCK
INCARCERATION**

Recidivism lowered by 36%

\$36,000 vs \$12,000

\$2,000,000 saved for every 100 graduates

\$15,200,000 in 10 years



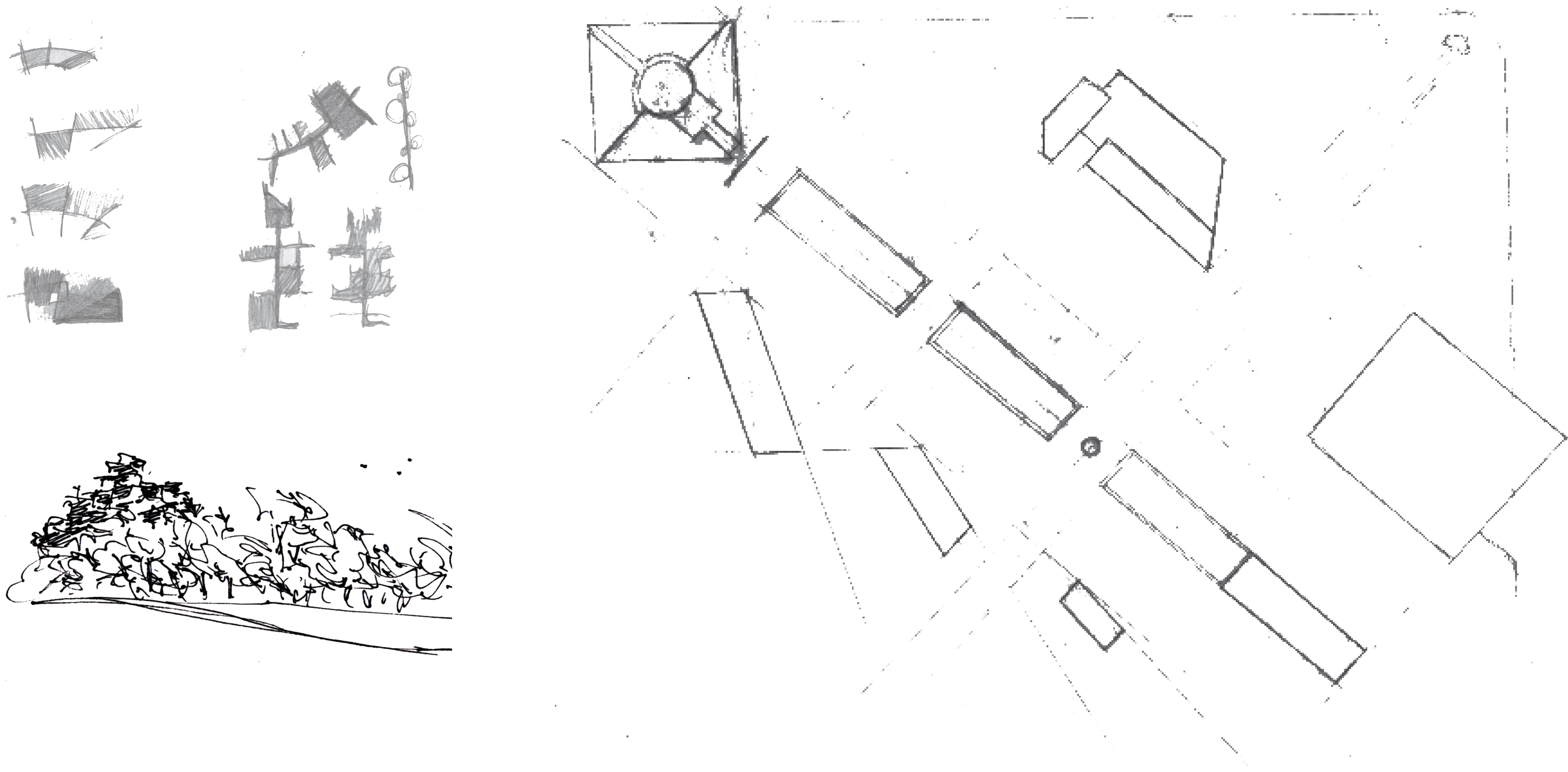
Waite Park, MN











Administration: Offices, Visitor meeting space, Reception, Staff Living Quarters

Housing: Holding, Booking, Staff lounge, Cell blocks, Laundry, Clinic

Chapel: Non-Denominational space, storage

Library: Classrooms, Dayroom/Open Study Space, Digital Media room

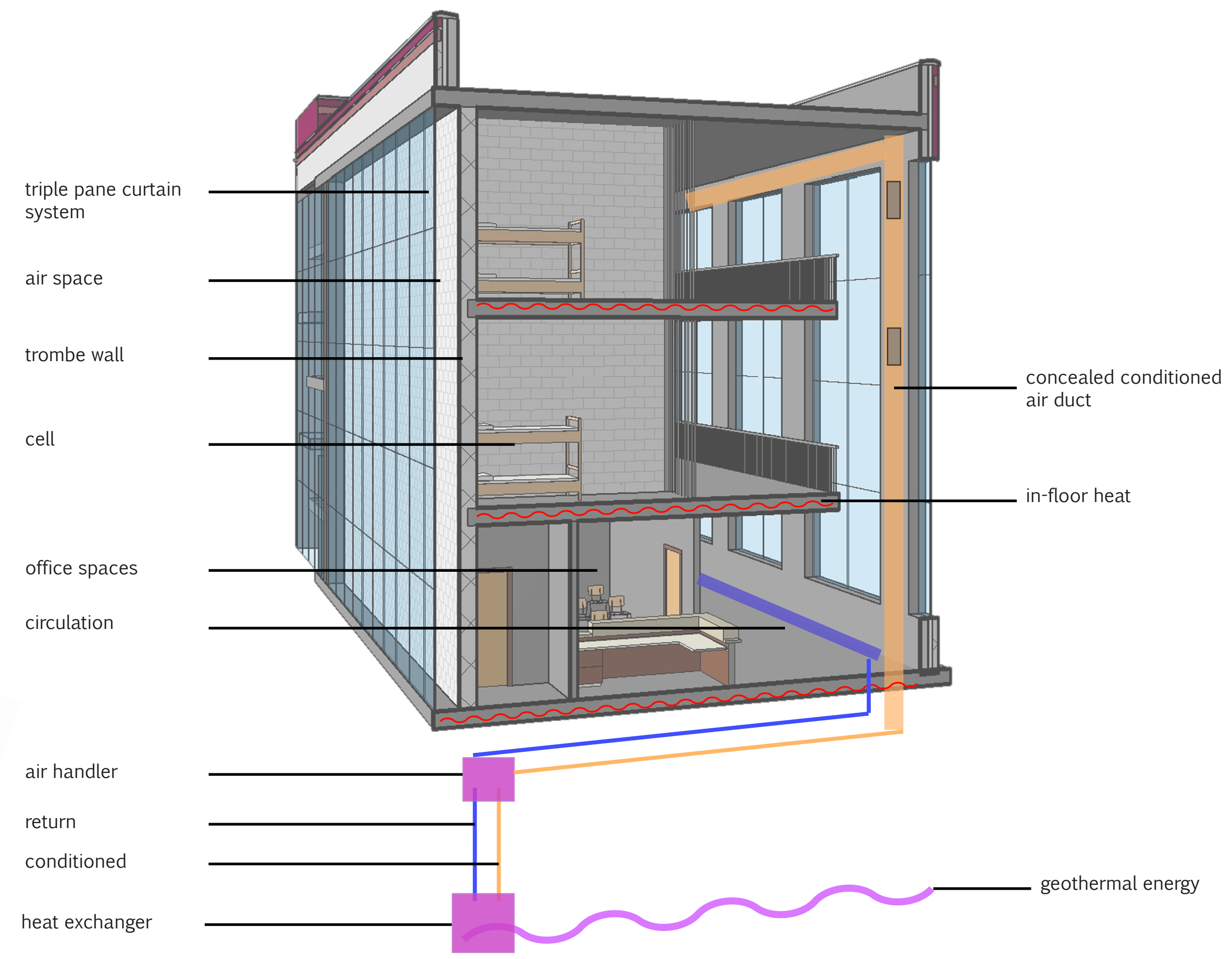
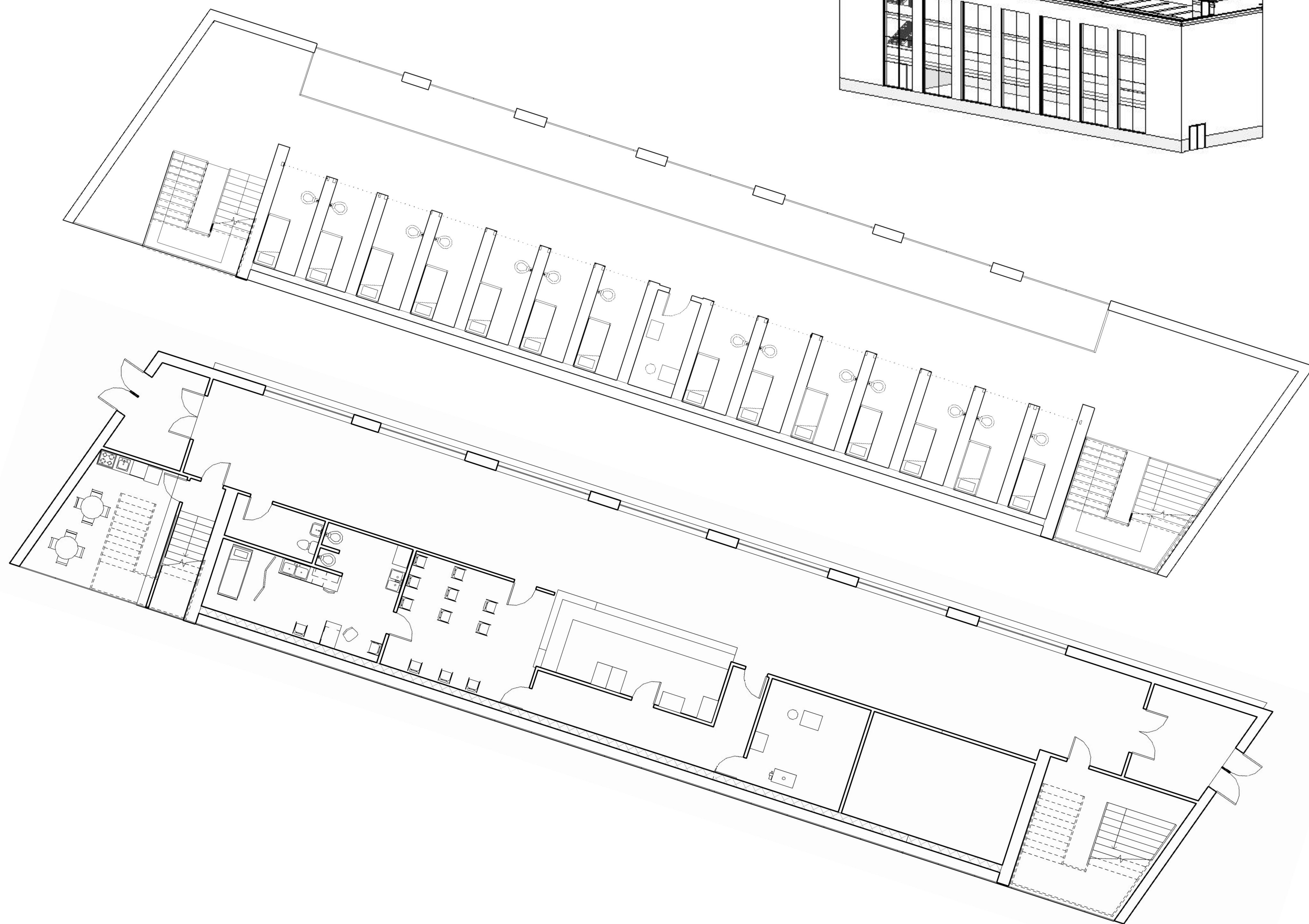
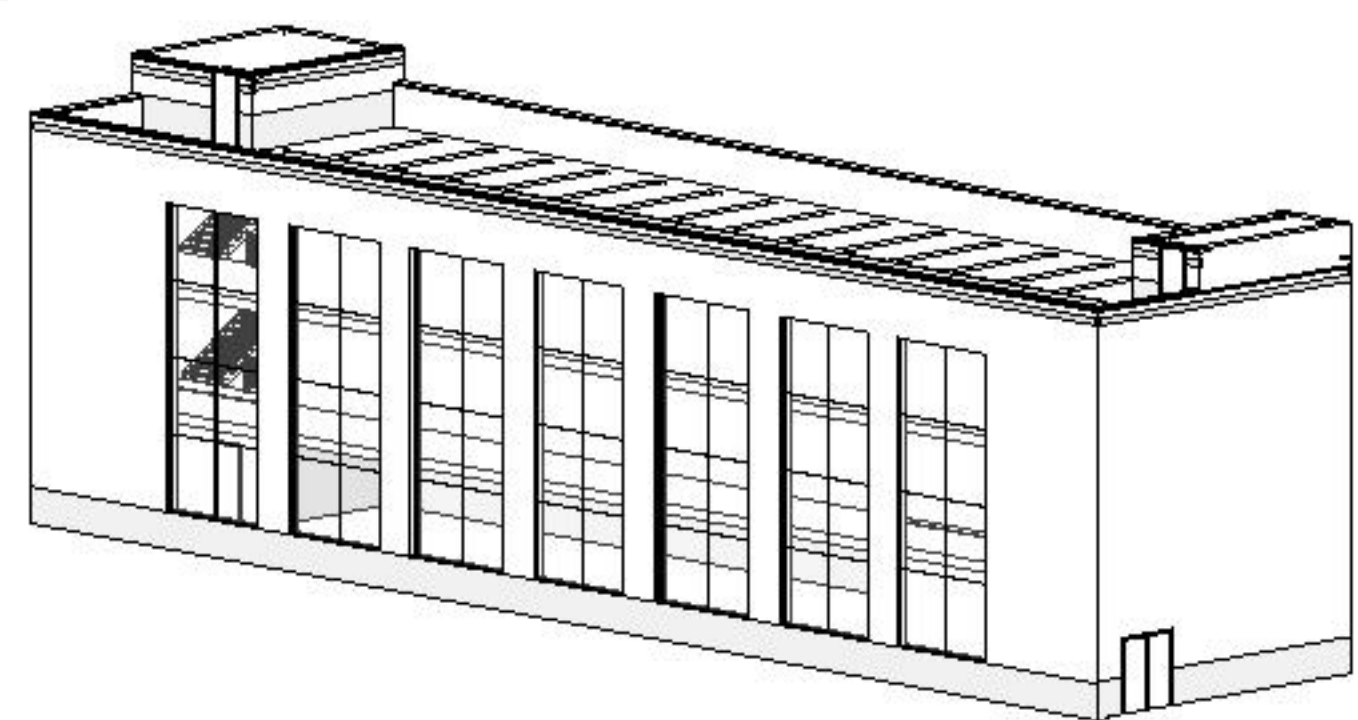
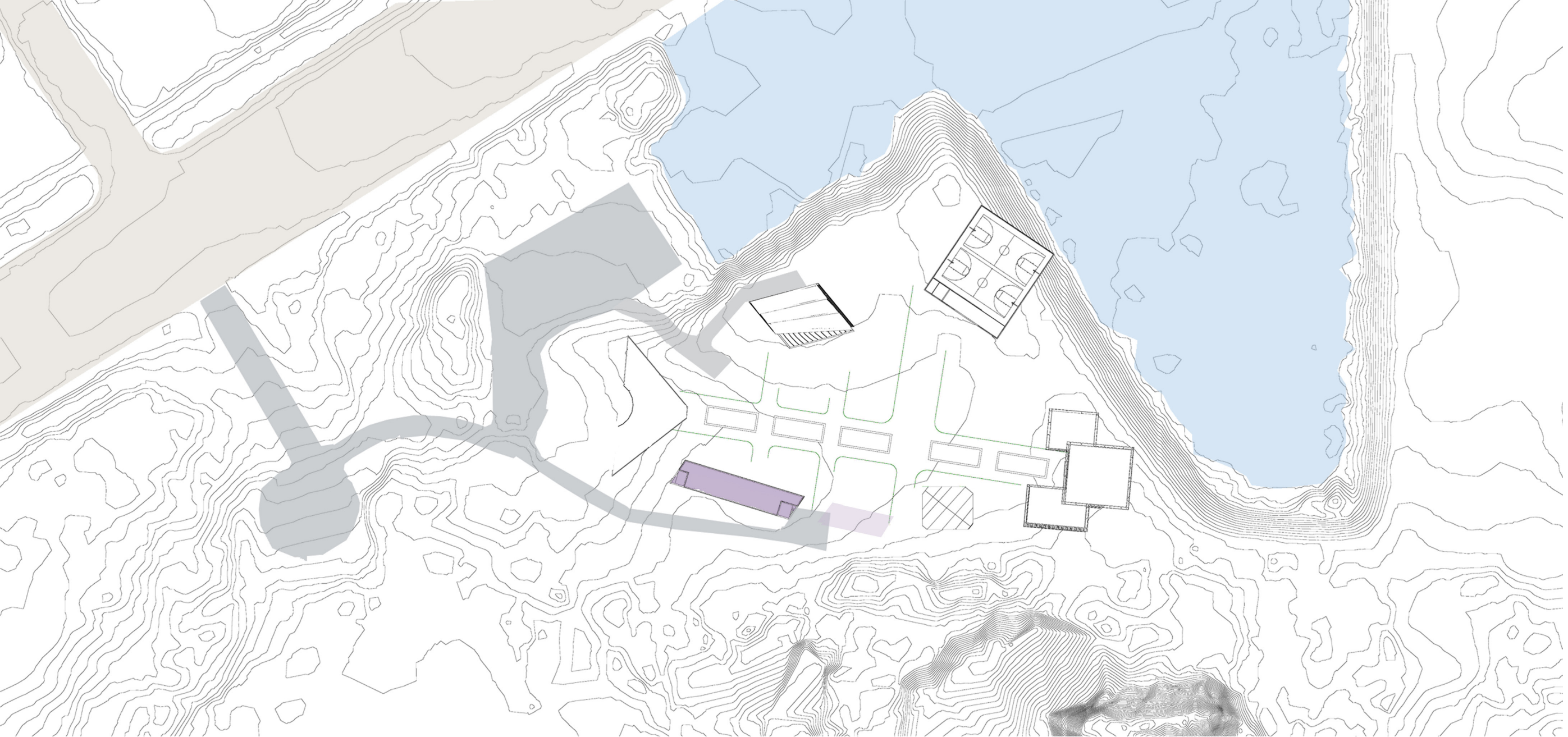
Gym: Exercise space (indoor) Exercise space (outdoor) Weight room

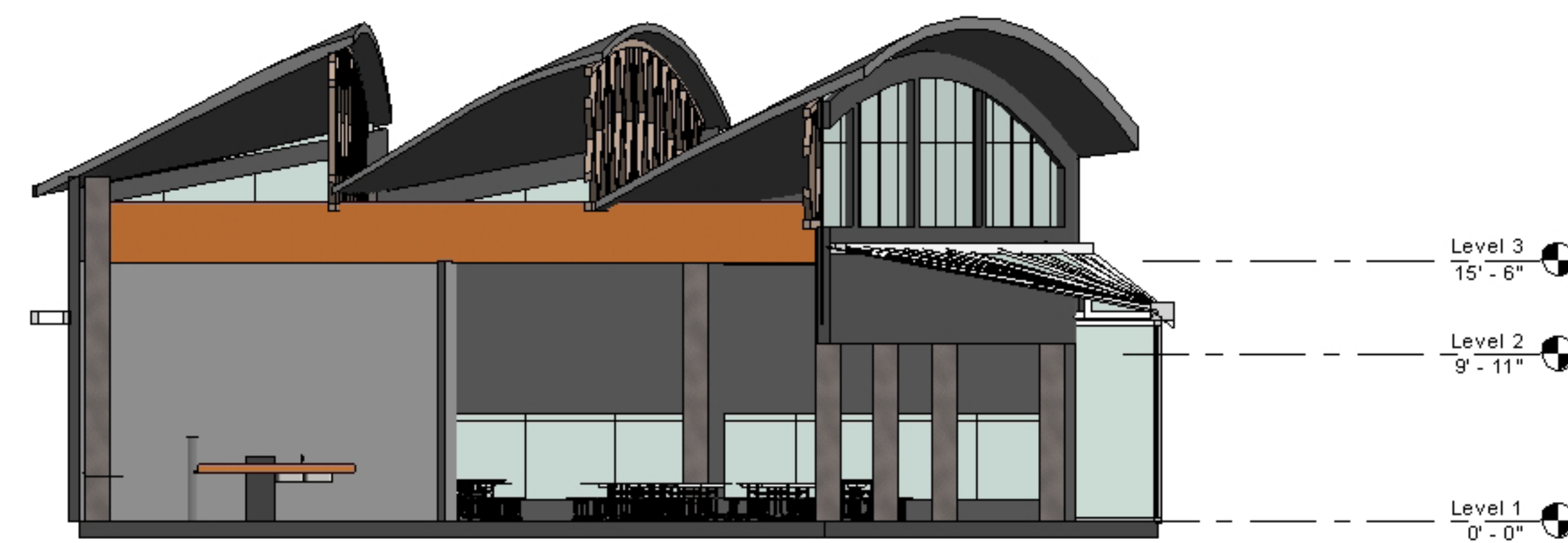
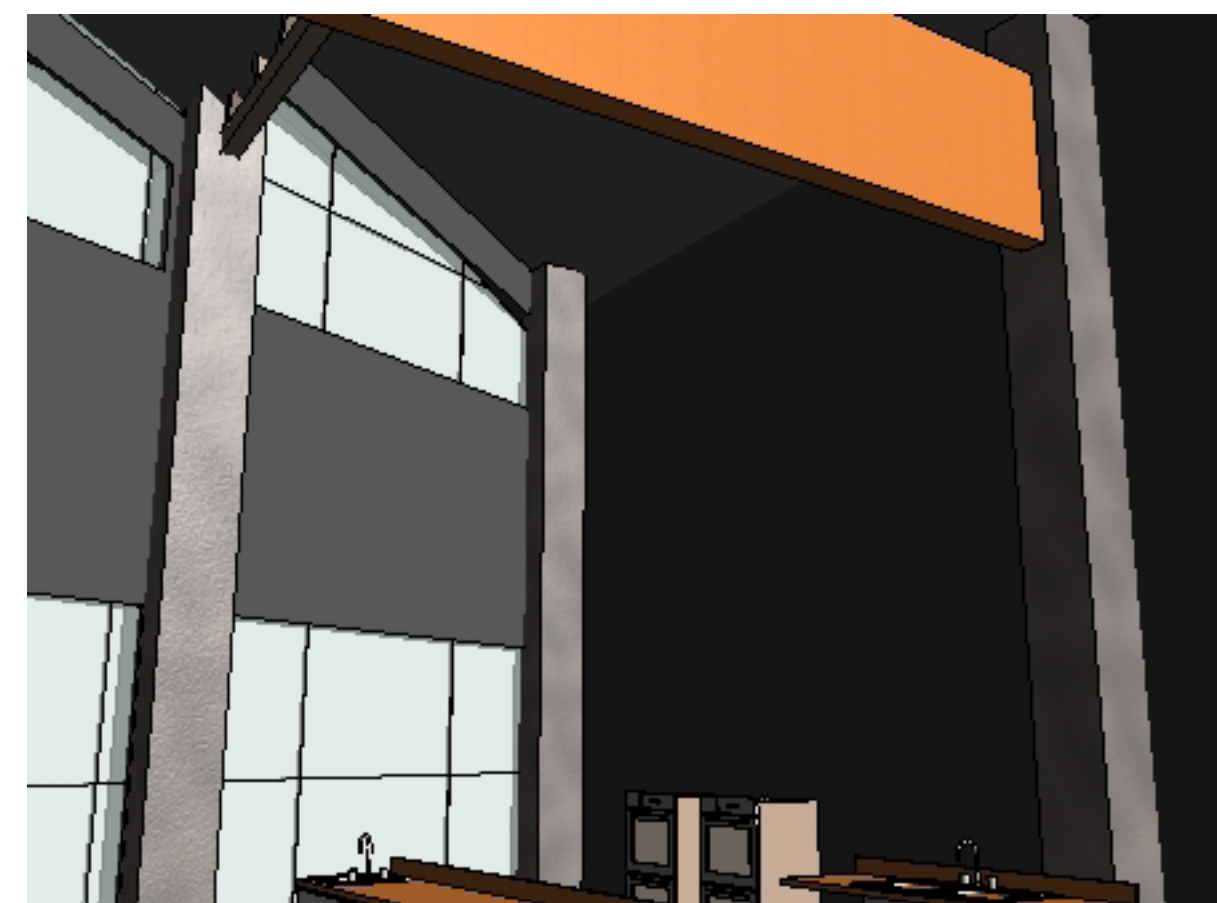
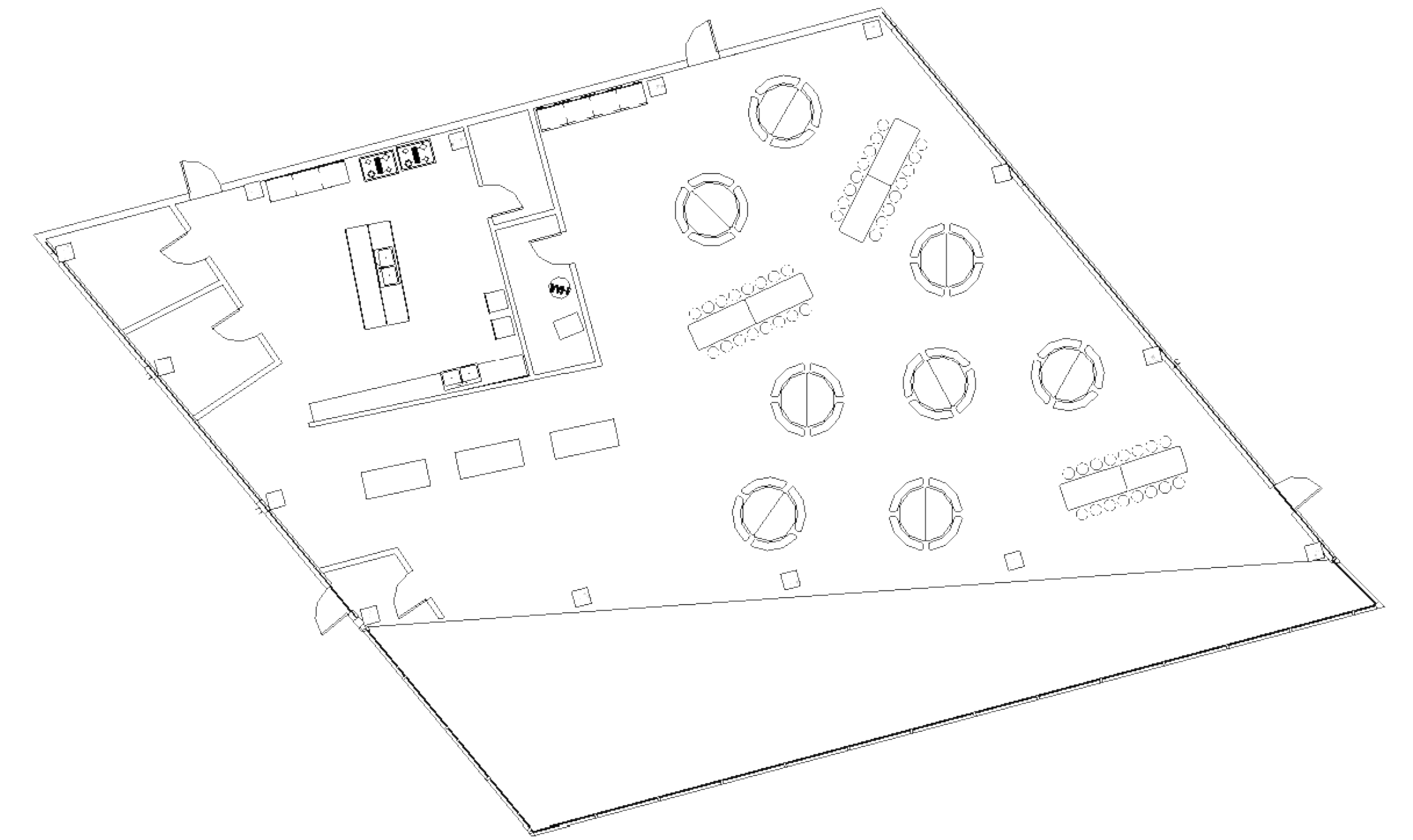
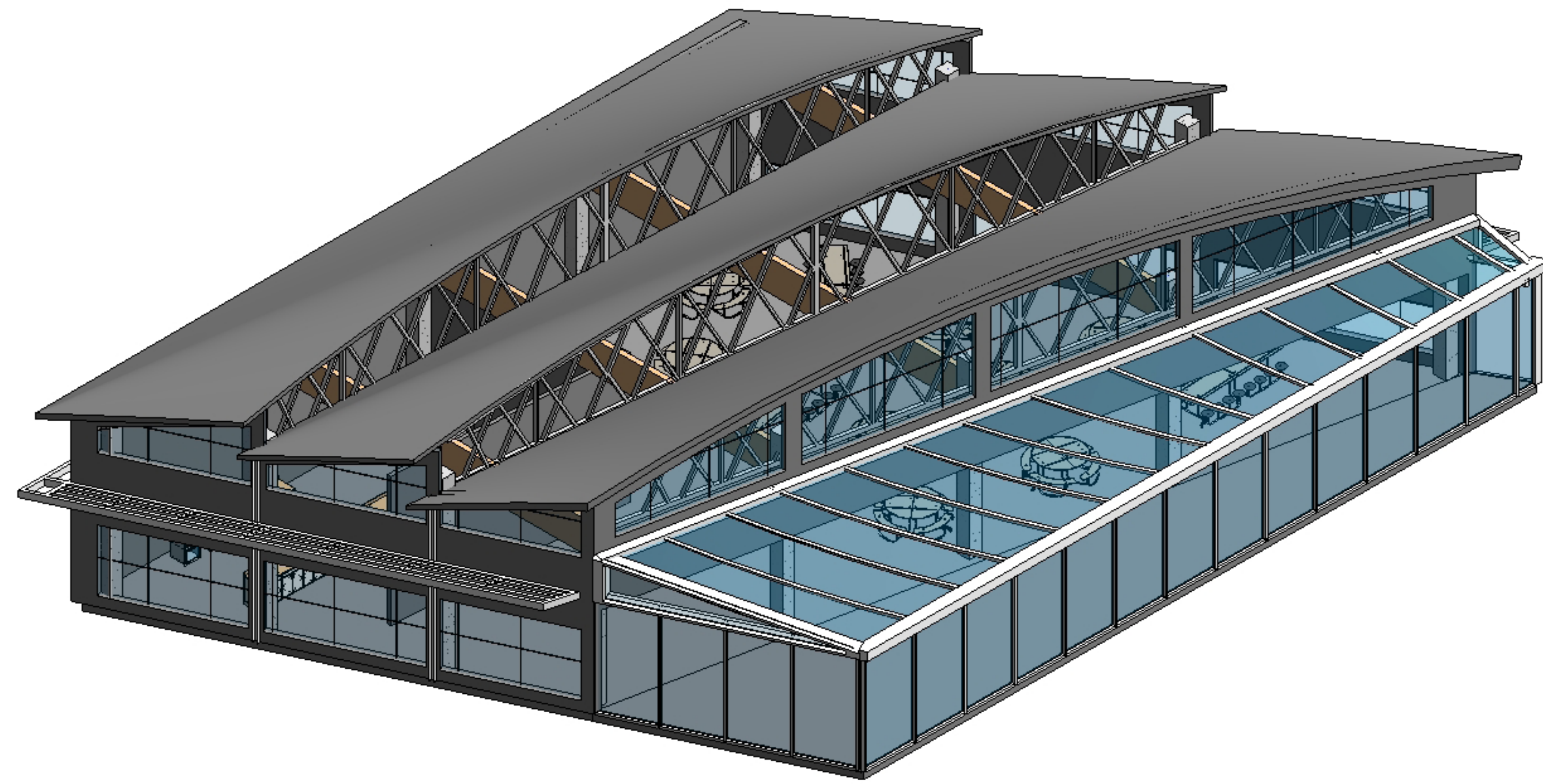
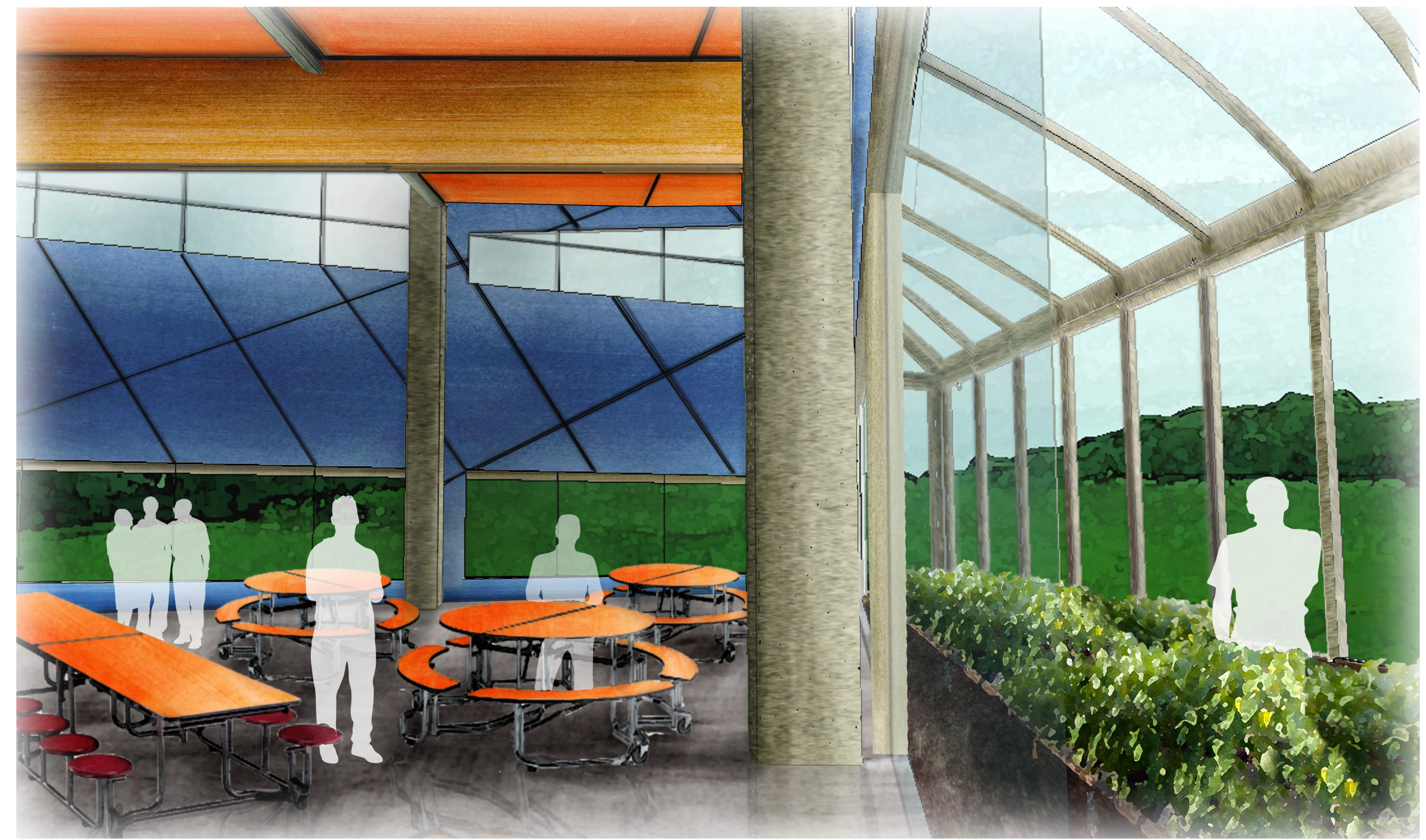
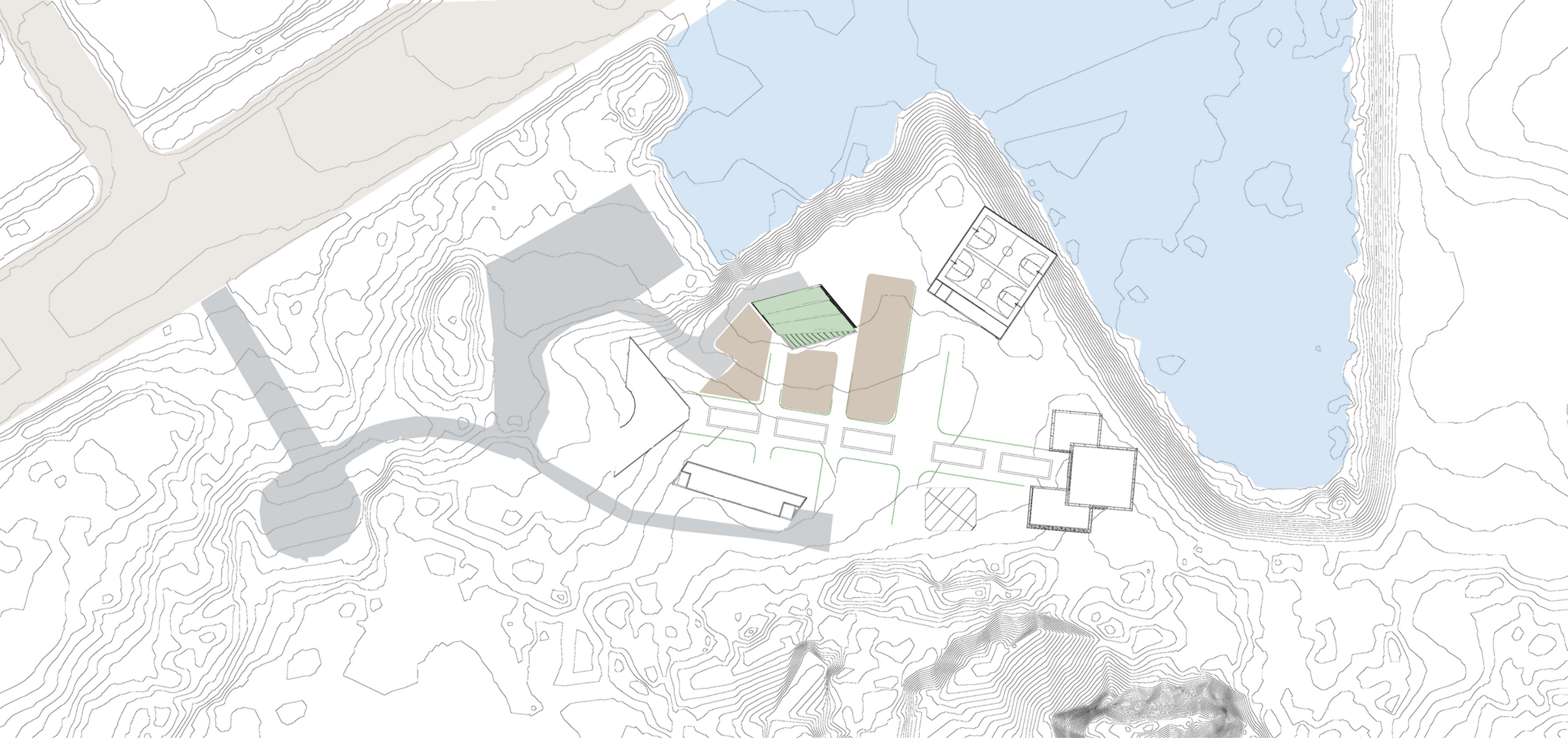
Cafeteria: Food Storage, Kitchen, Serving Area, Seating, Greenhouse, Yard Storage

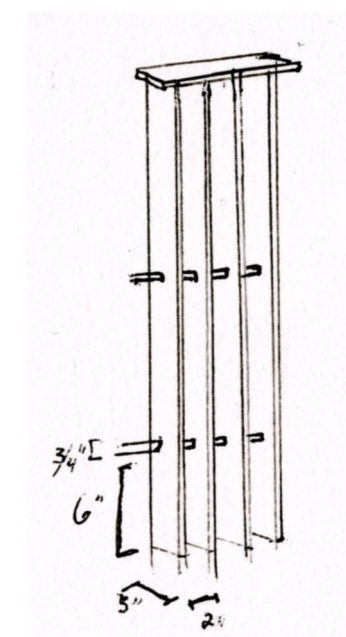
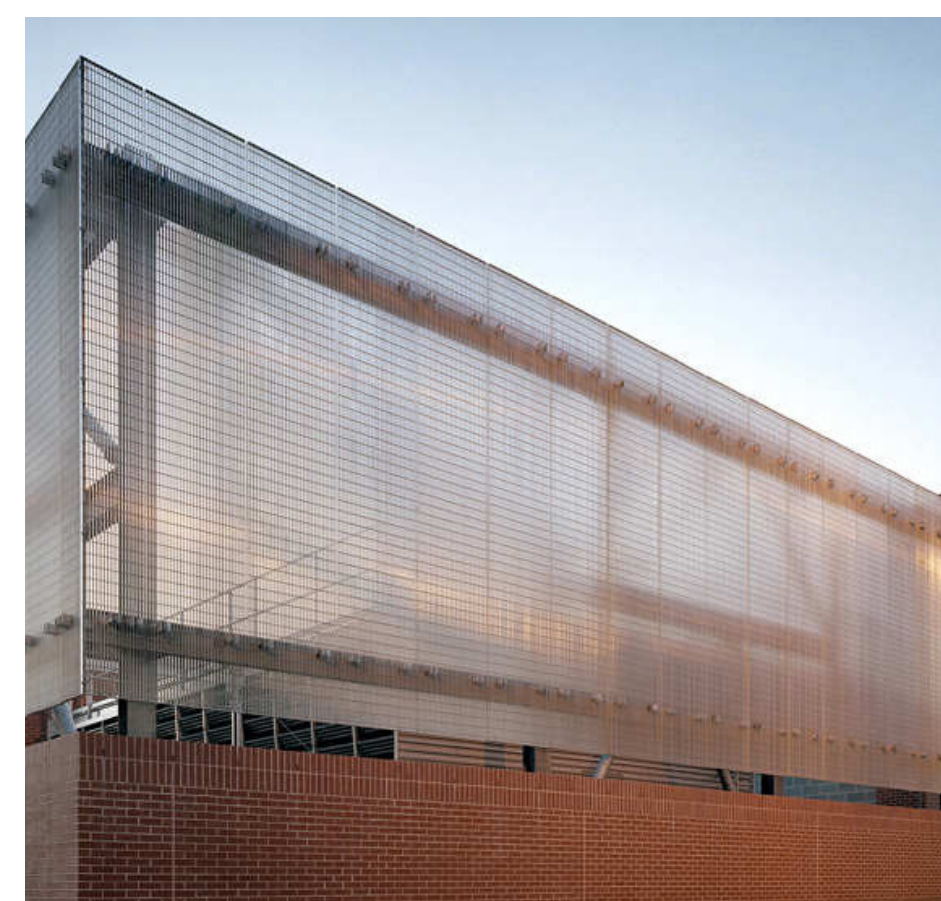
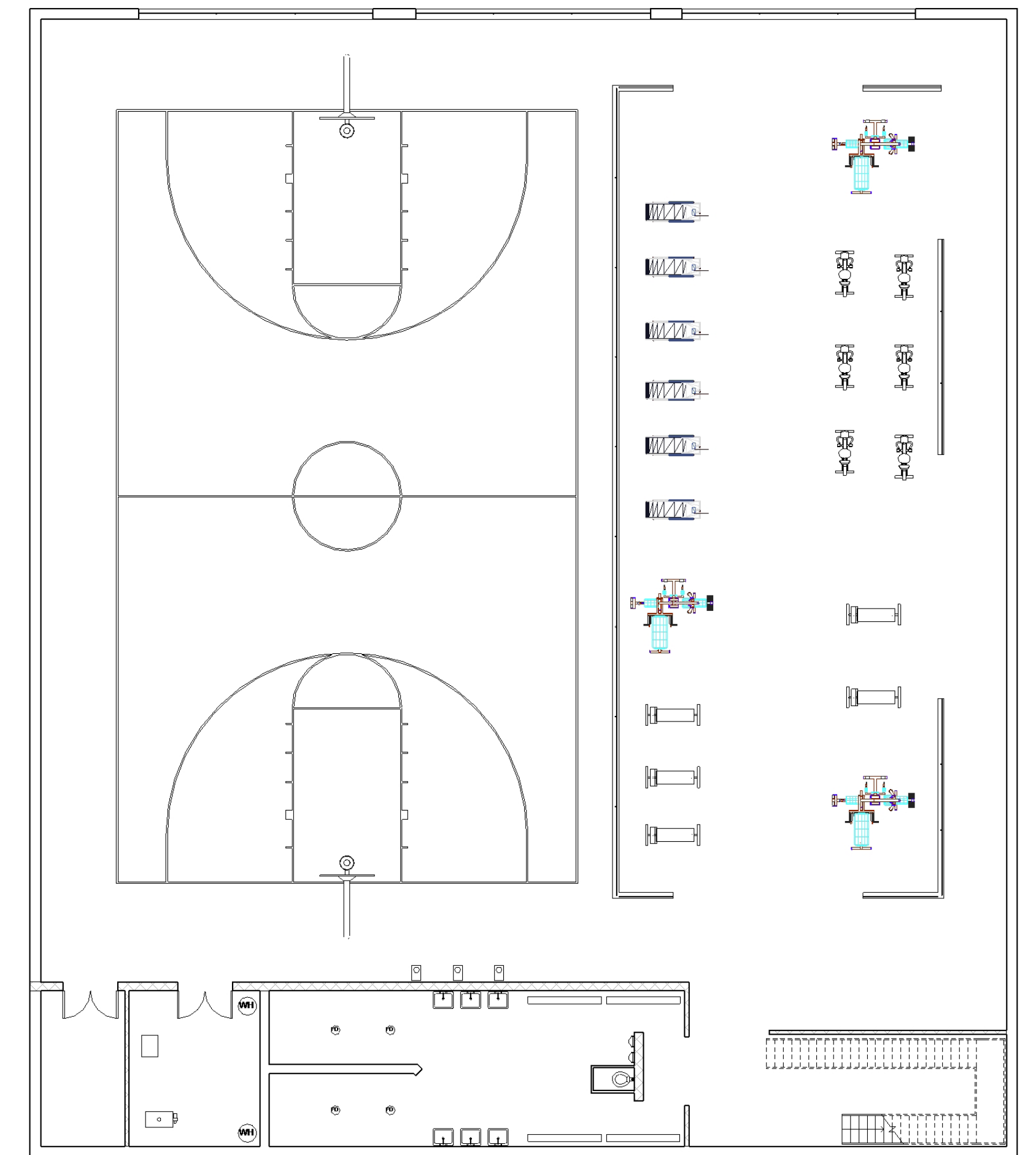
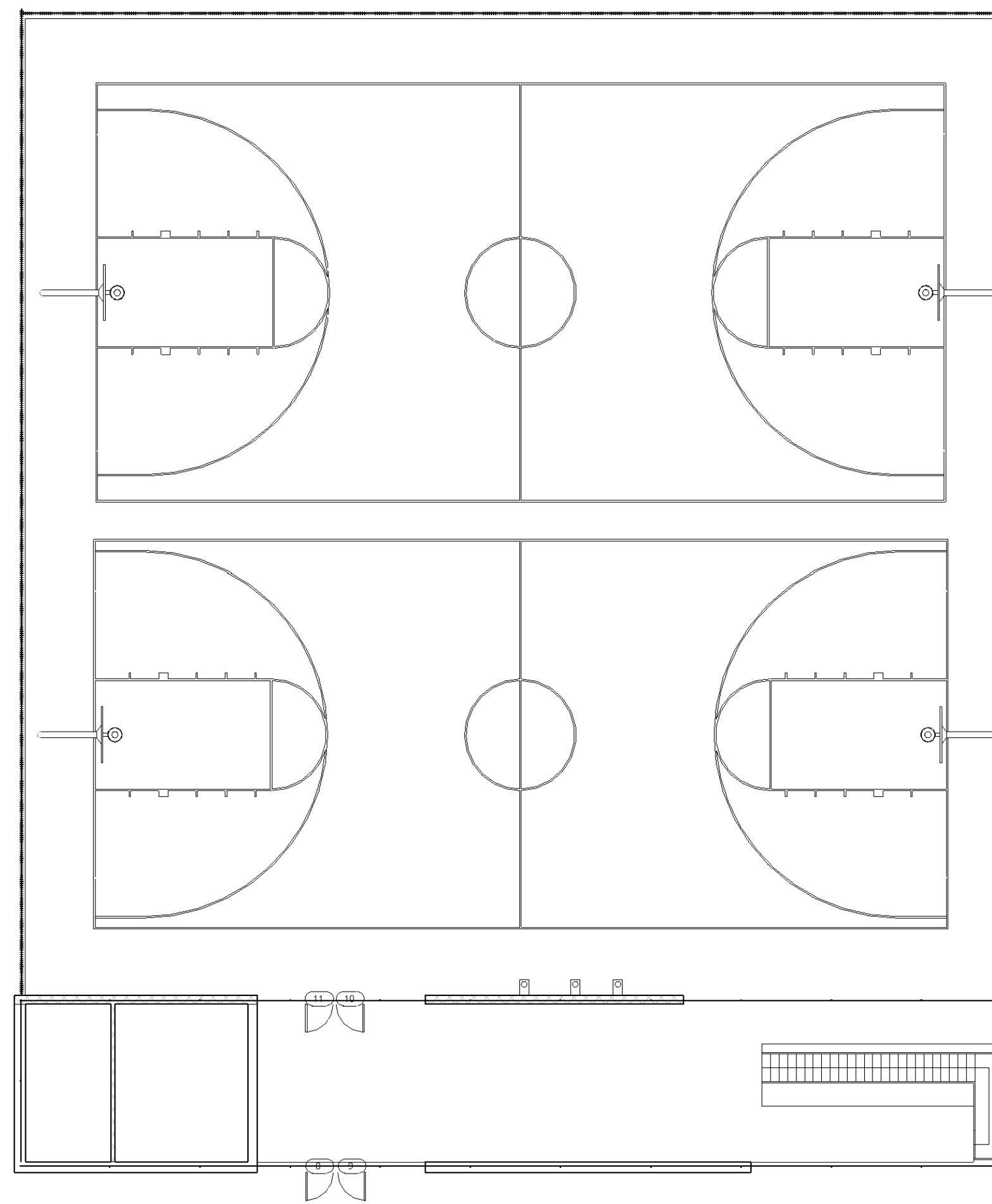
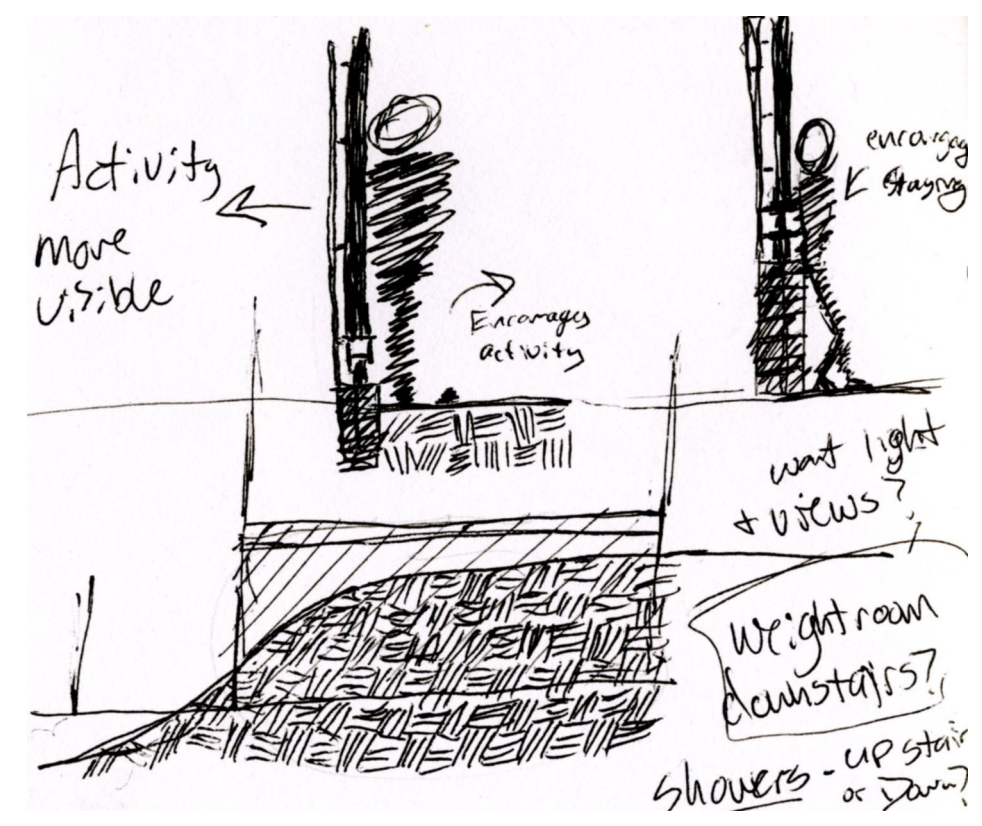
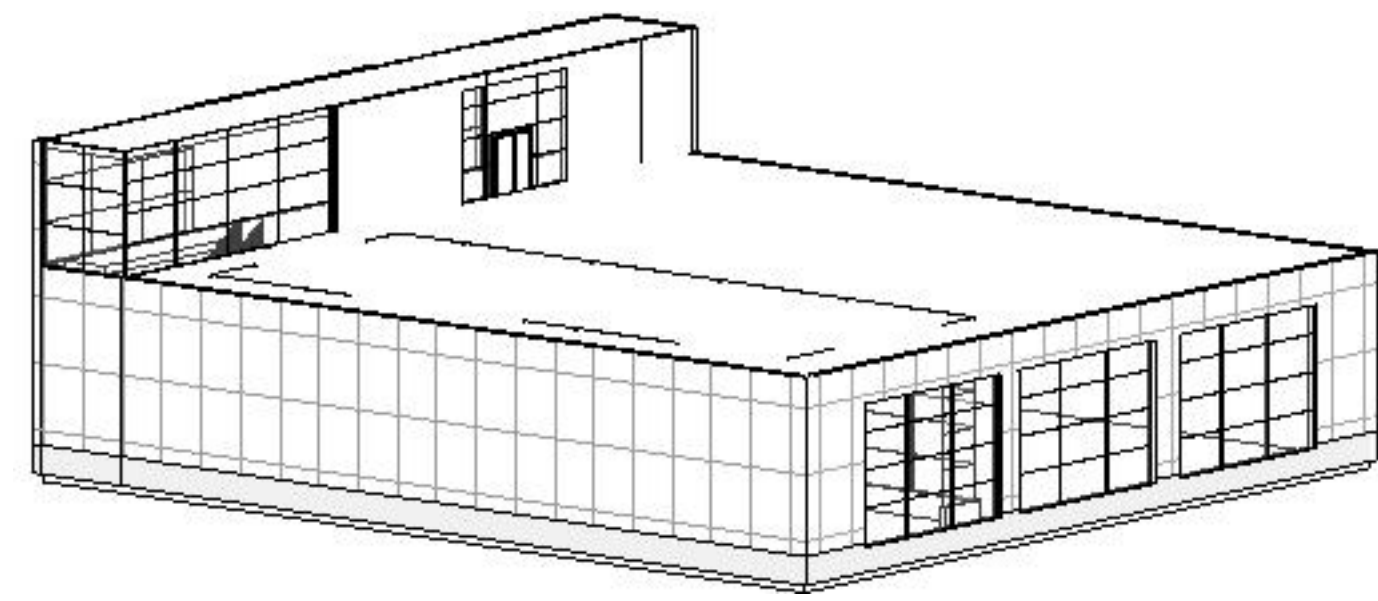
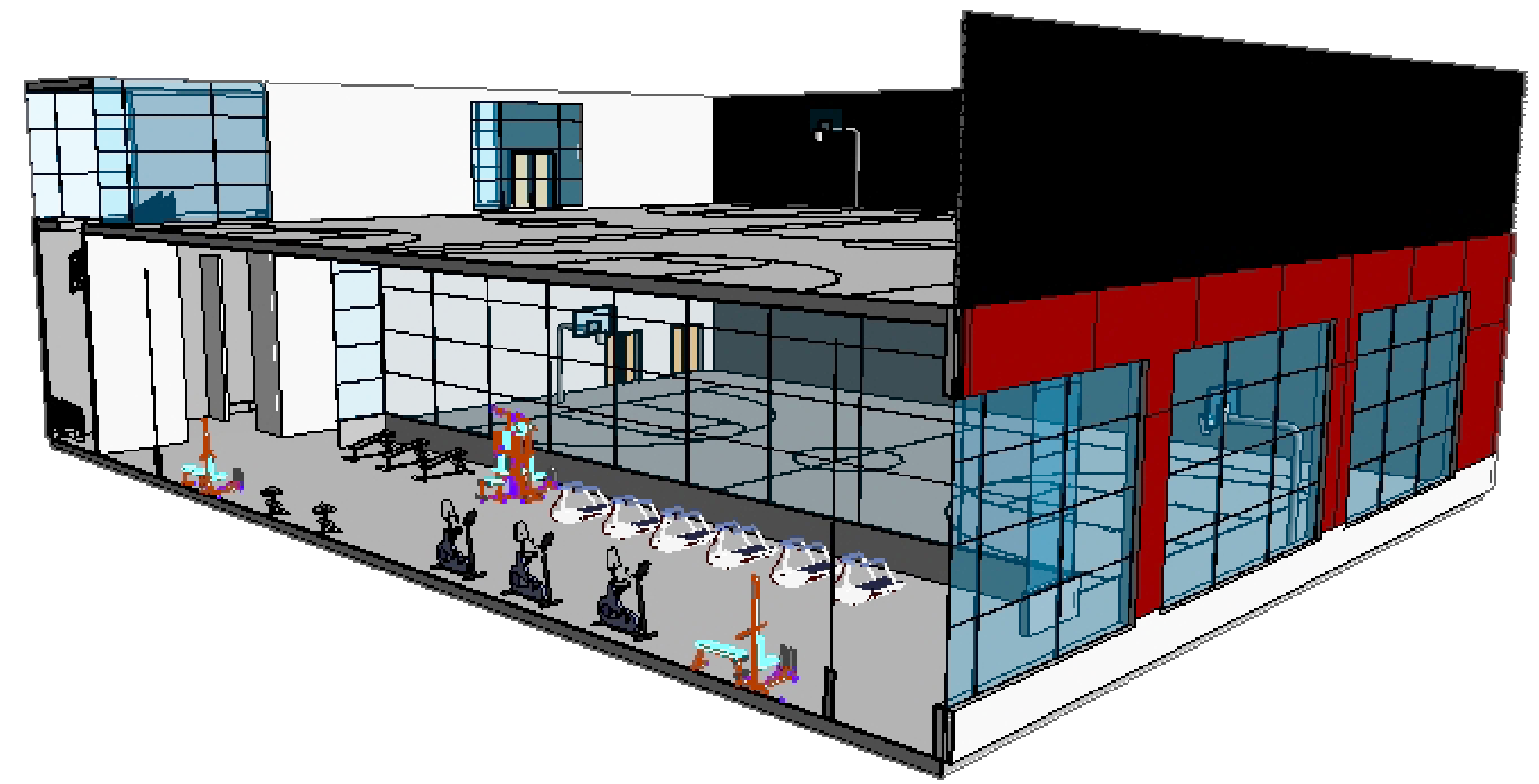
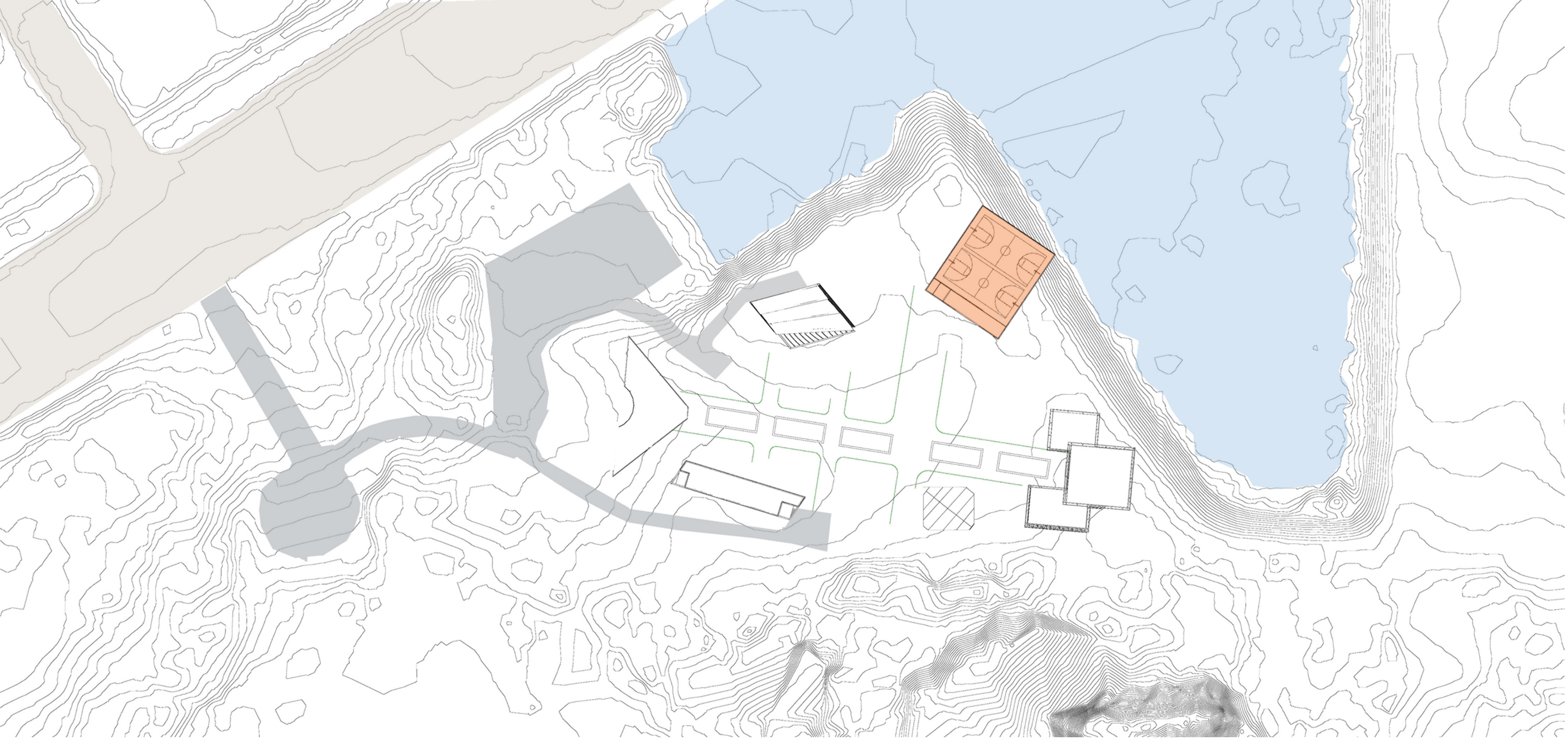
General Site: Mechanical, Circulation, Yard Security Features, Landscaping

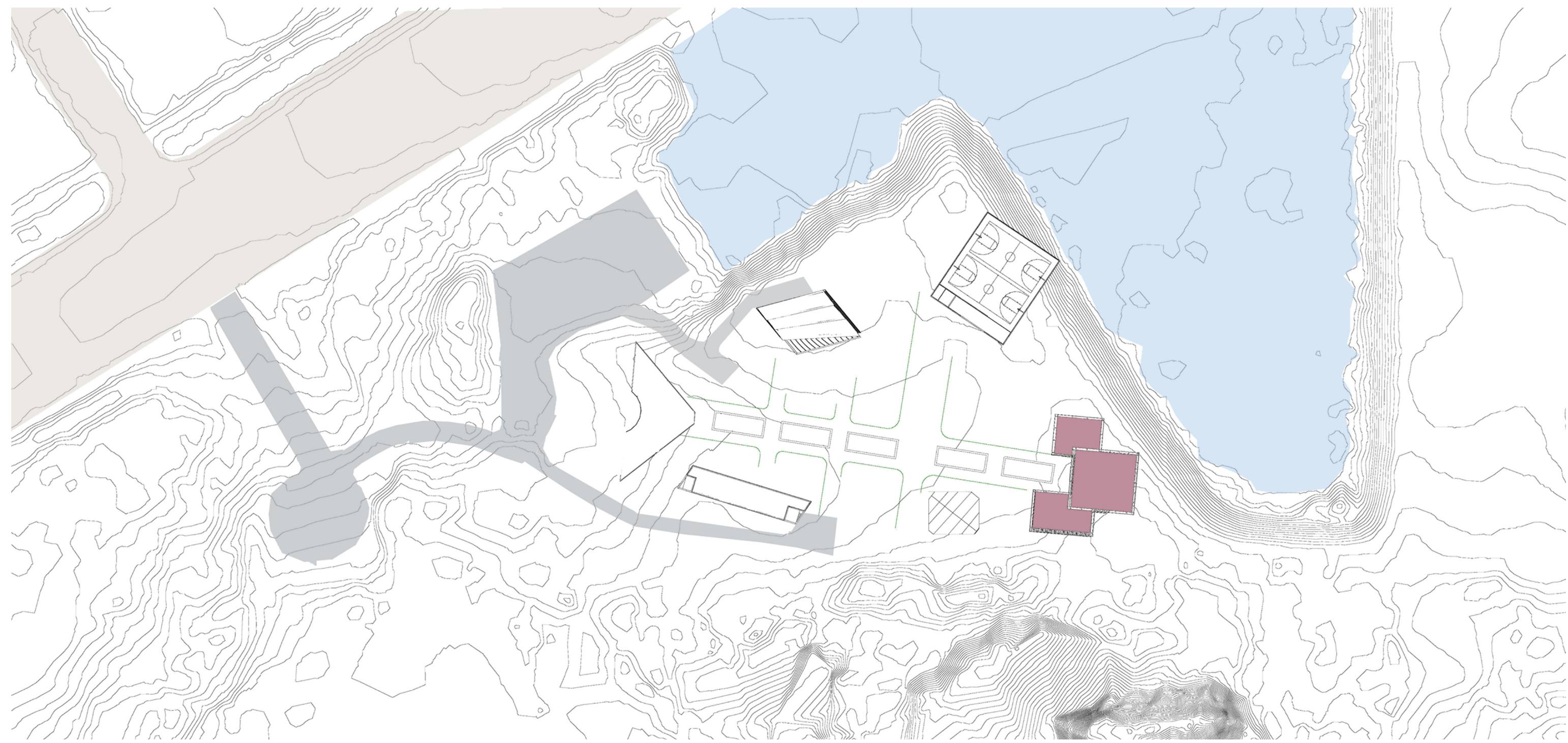


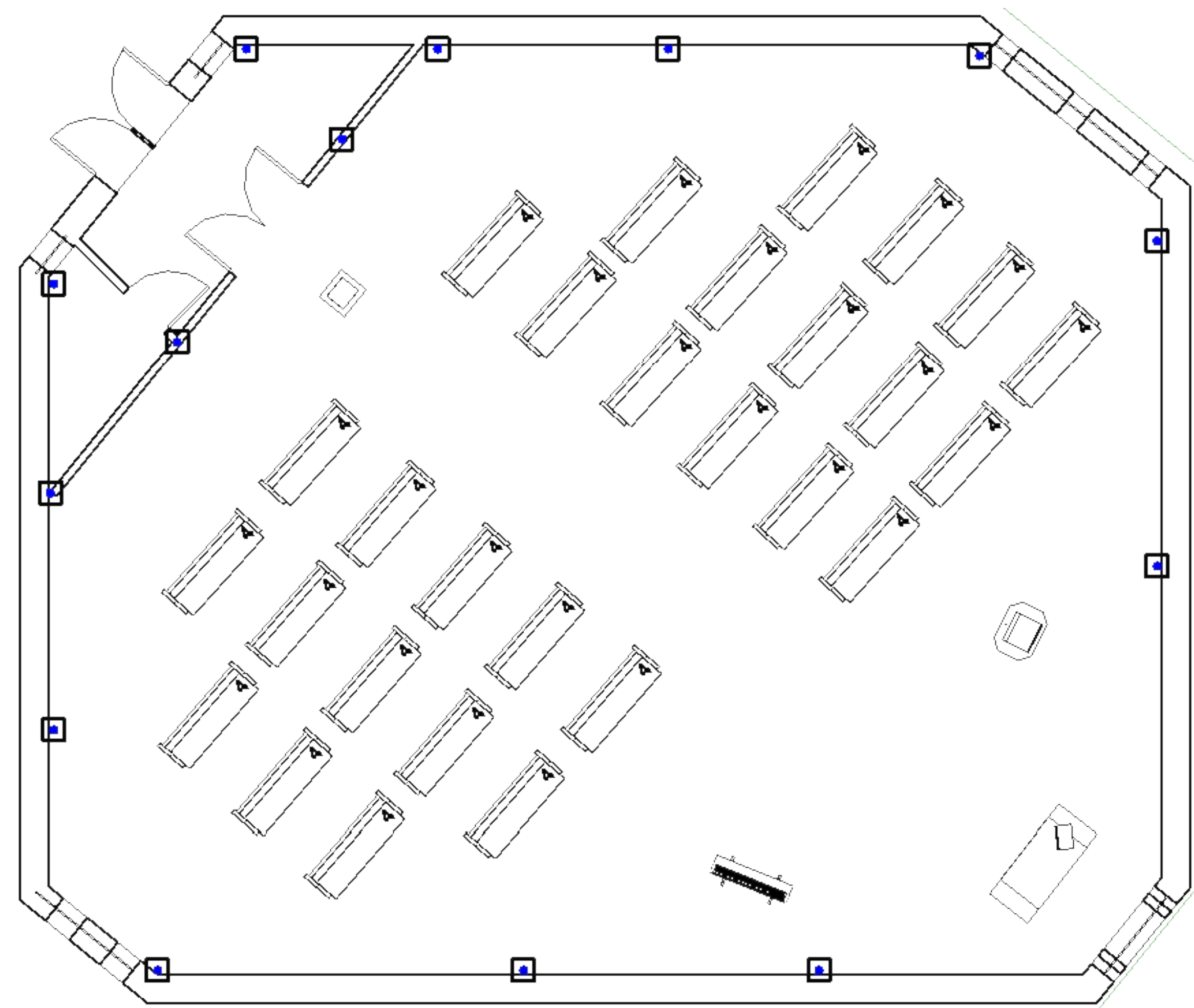
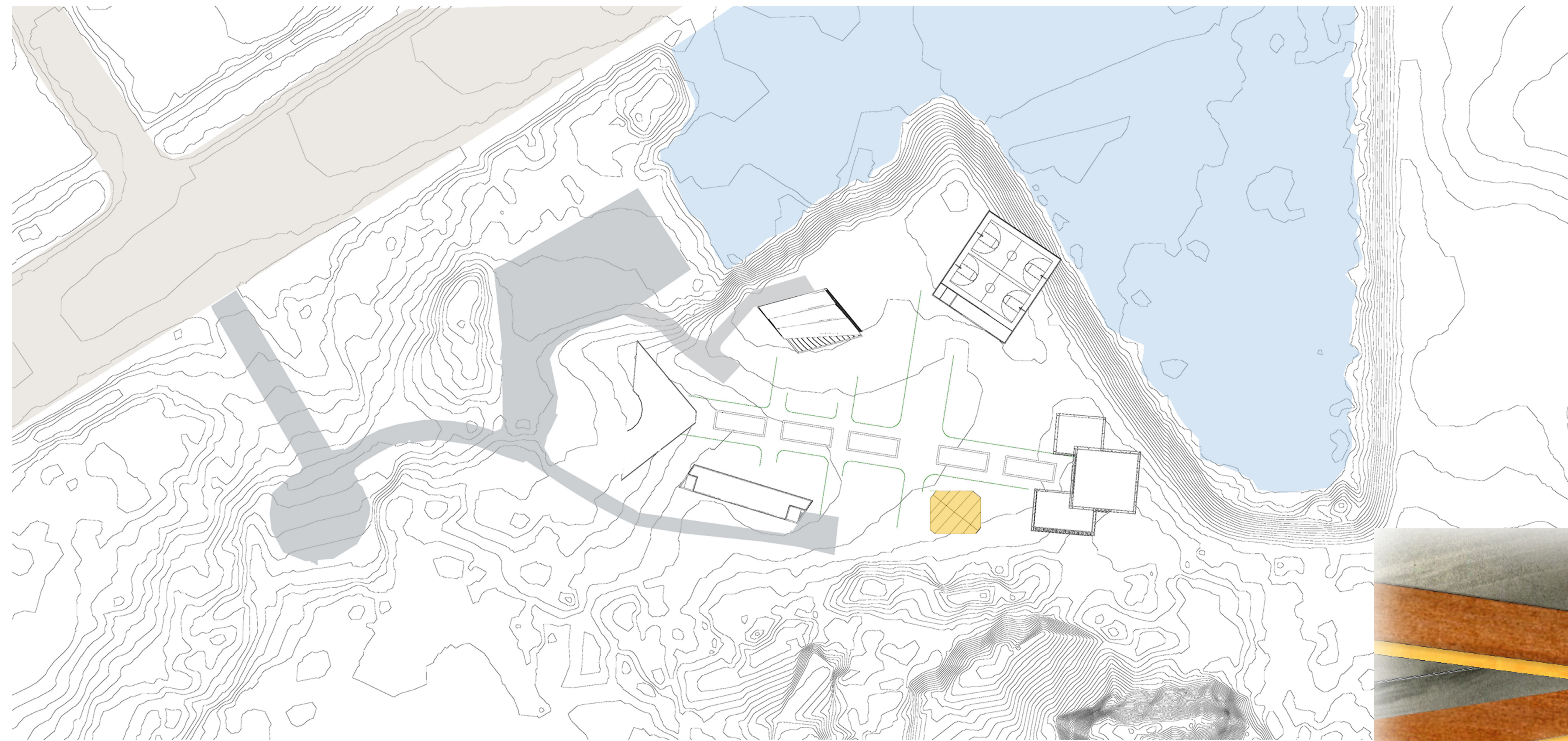
Final Site Map

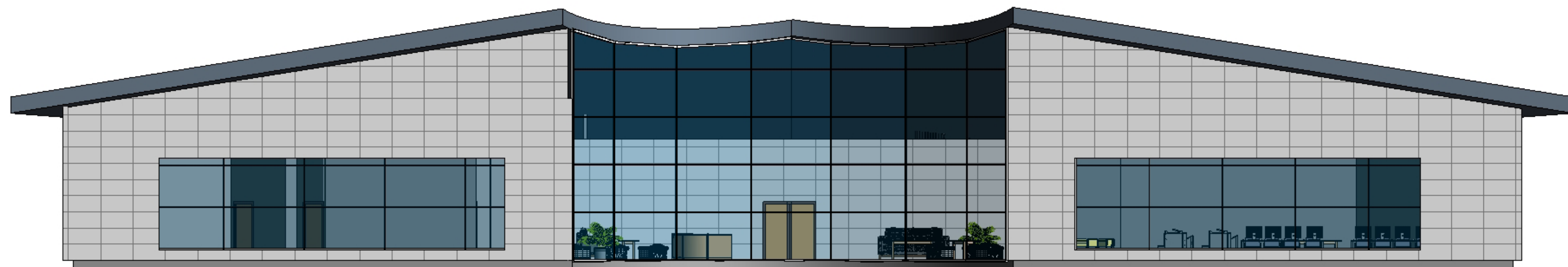
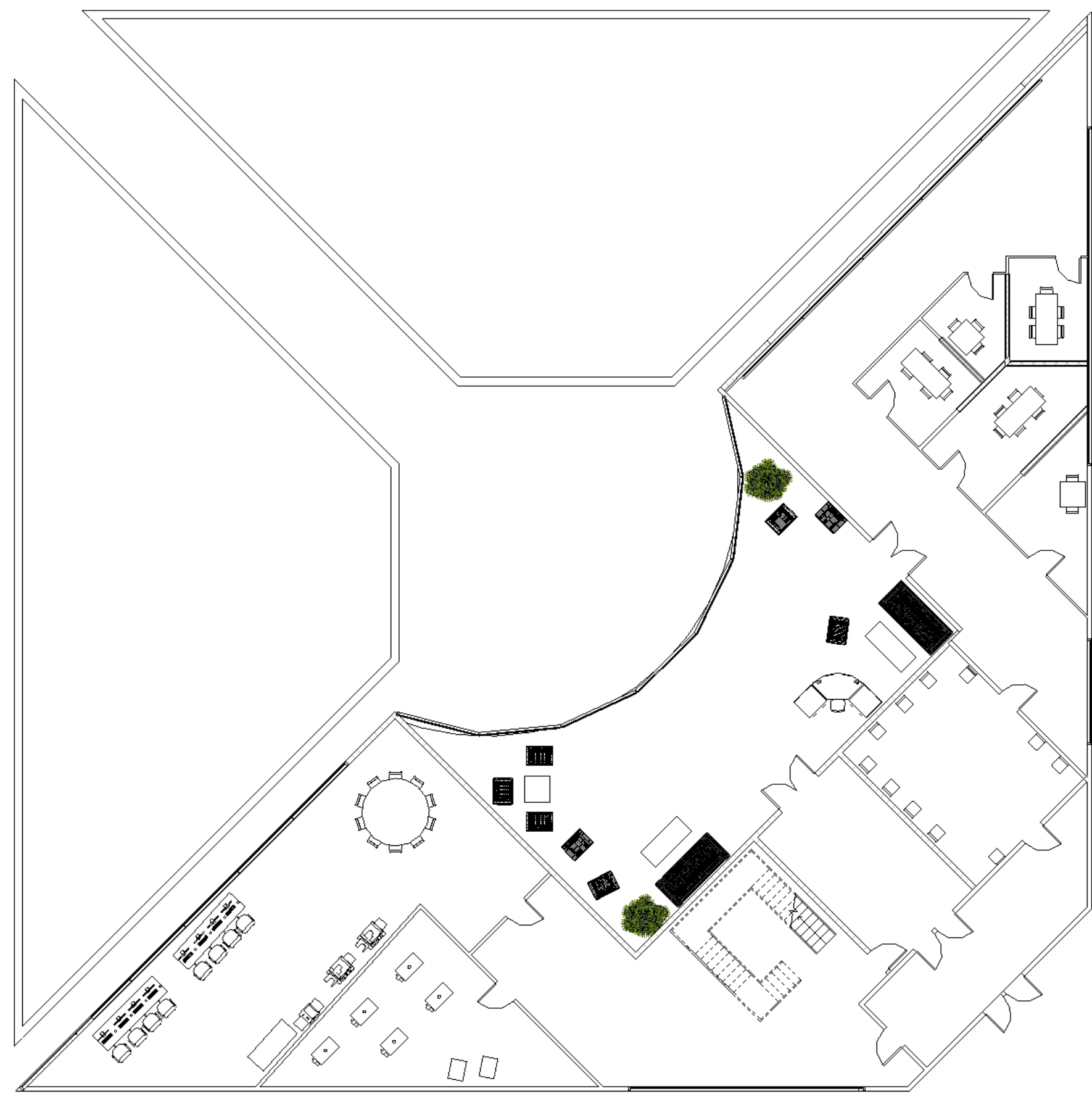
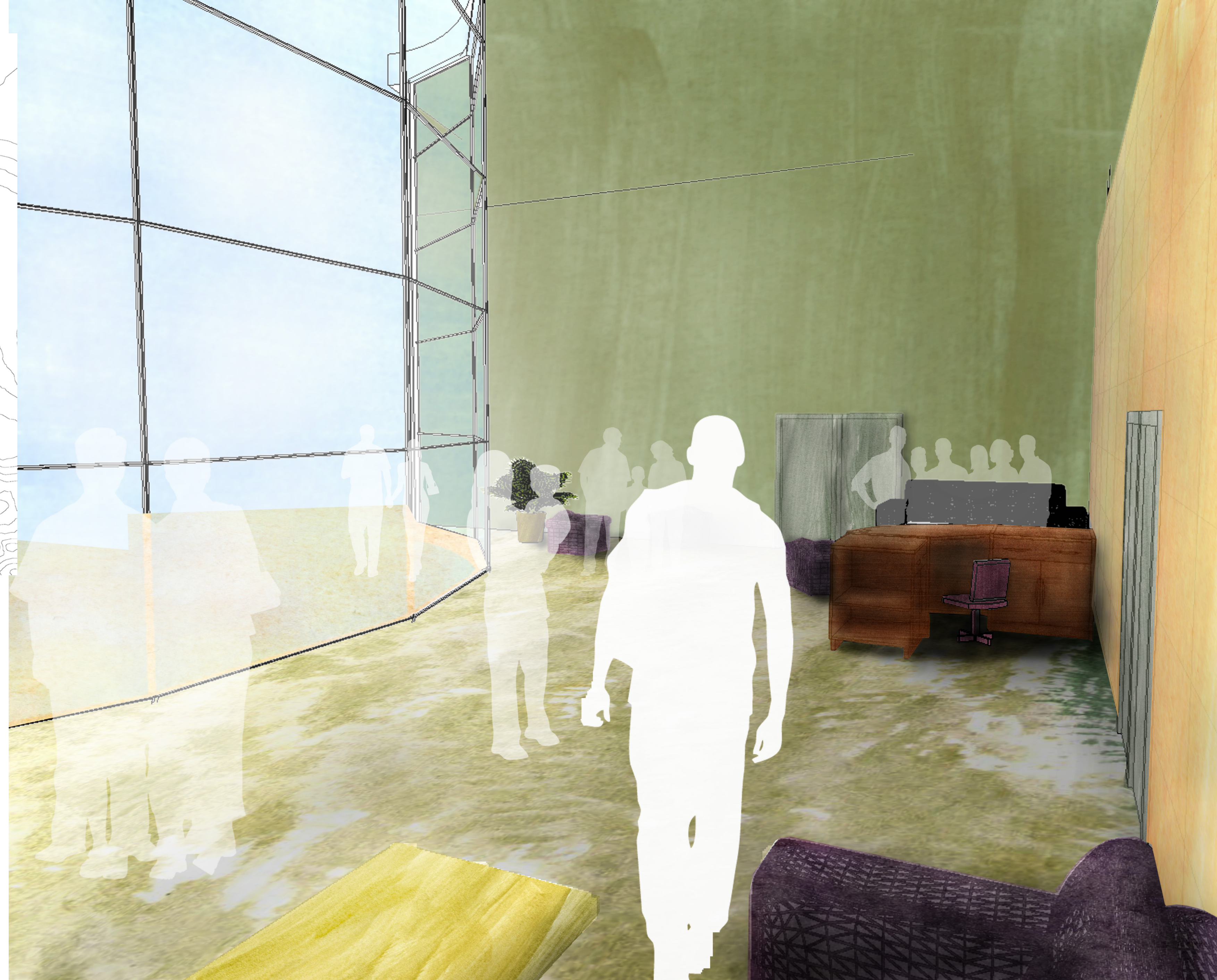
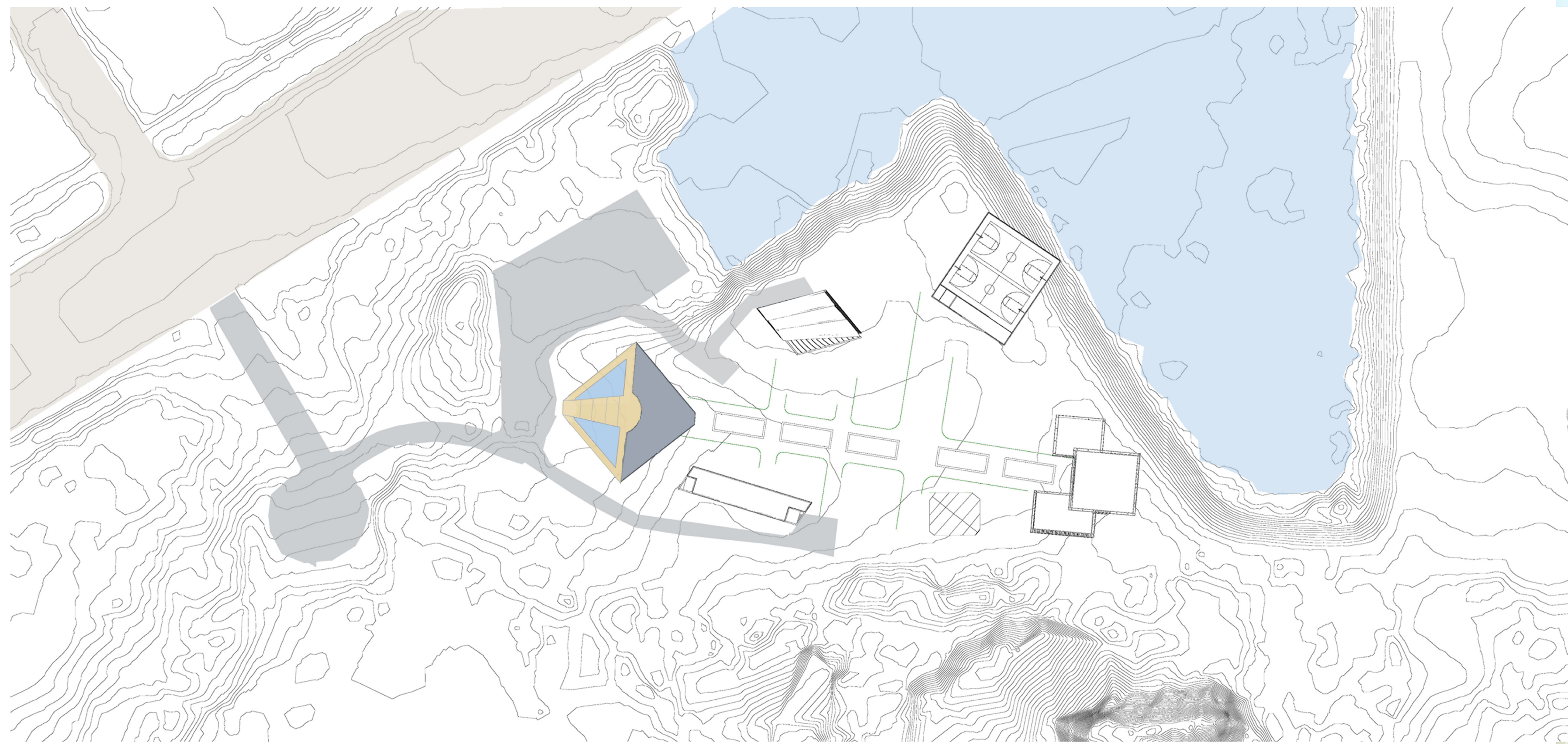






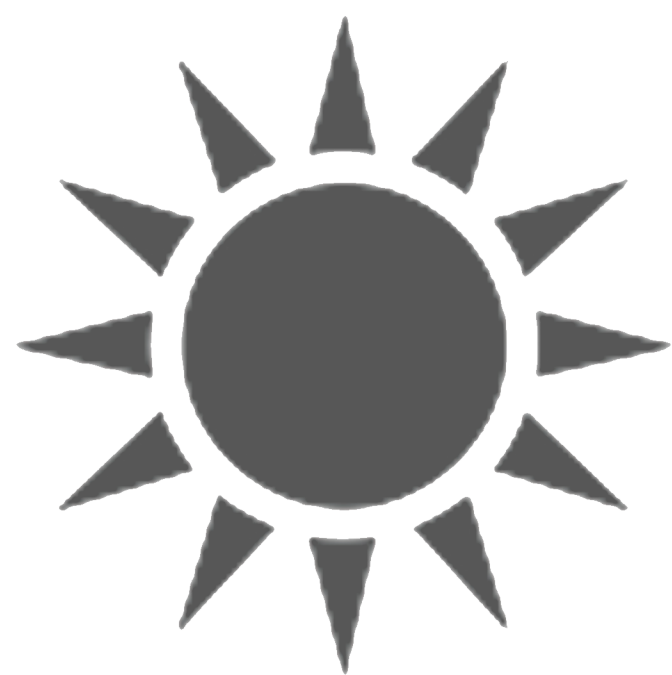




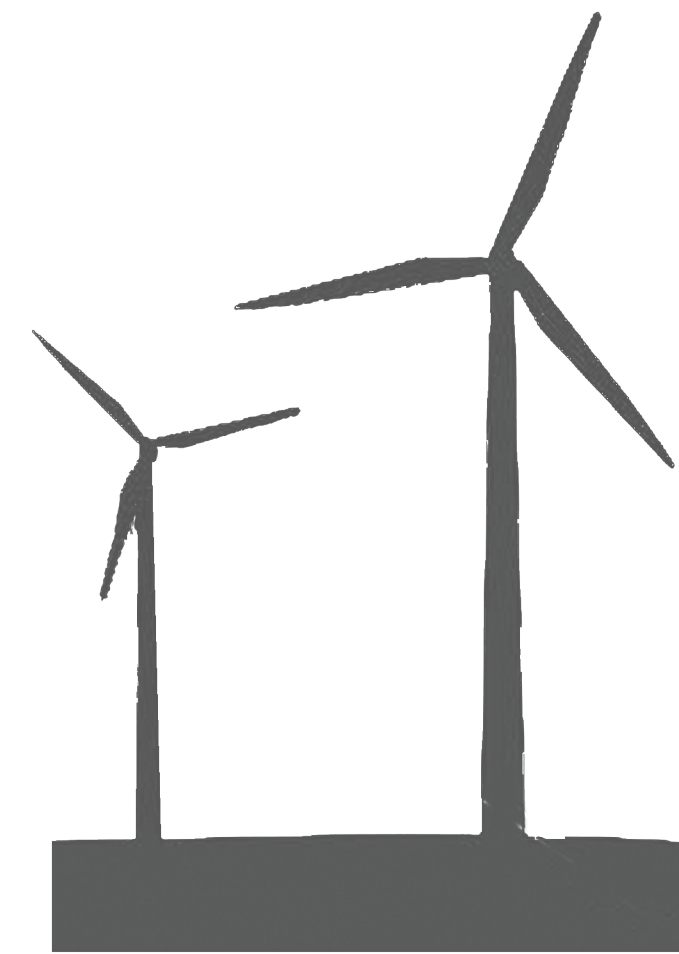




SOLAR ENERGY



WIND ENERGY



DIRECT EXCHANGE GEOTHERMAL





What psychological effects can architectural design generate for the incarcerated, especially effecting their rehabilitaion?

Develop a sense of community, not isolation.
Show them structured opportunities, not hopelessness.
Provide views of life beyond the fence and their time here.
Keep them connected.

As much as it is an investment in their future, it is an investment in our own.

