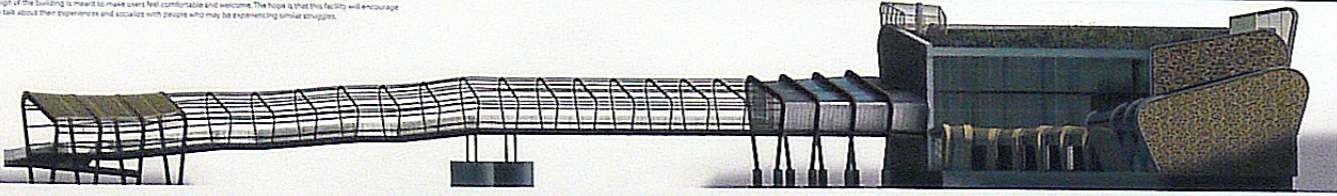


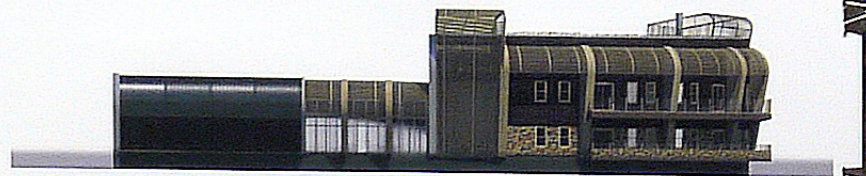
Restore

The design of the building is meant to make users feel comfortable and welcome. The hope is that this facility will encourage users to talk about their experiences and connect with people who may be experiencing similar struggles.

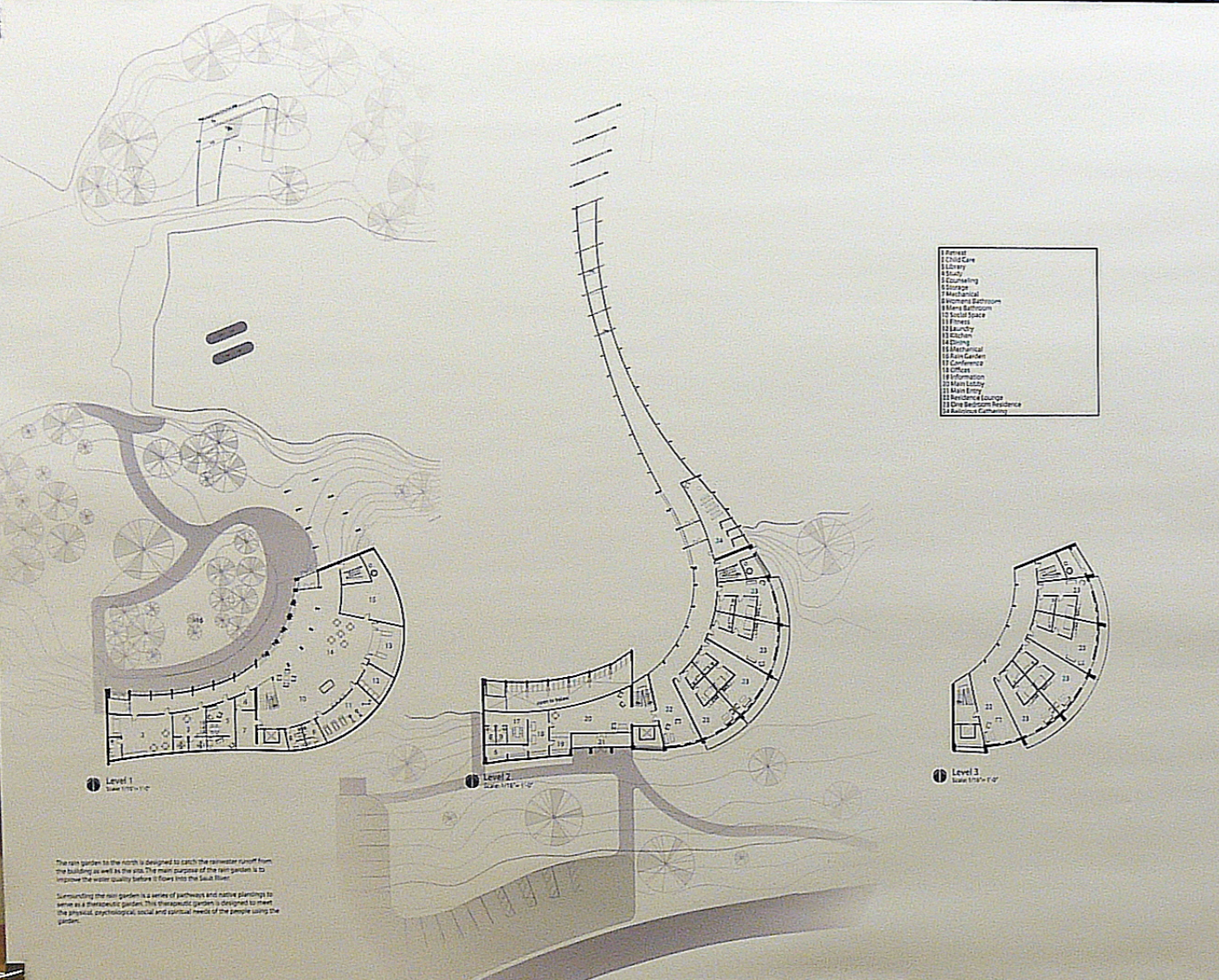
The natural landscape and meandering pathways offer the user the experience of the beauty of the site, the view, and the surrounding environment.



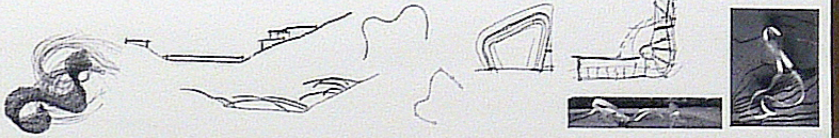
Large windows located along the north side of the building allow for consistent natural light throughout the year.



The warm material palette composed of friendly wood, stone and glass suggests a "home-like" comfortable feeling.



- 12000 Cafe
- 12100 Lobby
- 12200 Study
- 12300 Meeting
- 12400 Workshop
- 12500 Recovery Station
- 12600 Women's Bathroom
- 12700 Social Space
- 12800 Office
- 12900 Laundry
- 13000 Storage
- 13100 Conference
- 13200 Garden
- 13300 Terrace
- 13400 Office
- 13500 Office
- 13600 Office
- 13700 Office
- 13800 Office
- 13900 Office
- 14000 Office
- 14100 Office
- 14200 Office
- 14300 Office
- 14400 Office
- 14500 Office
- 14600 Office
- 14700 Office
- 14800 Office
- 14900 Office
- 15000 Office

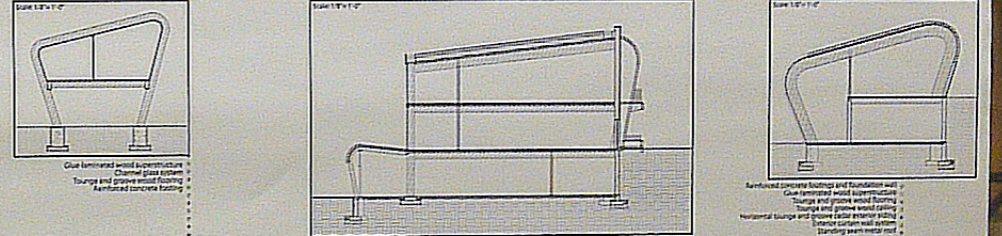


People are affected greatly by traumatic events such as war. Service members who are returning from war find themselves in a very difficult situation. They are left to deal with many issues mentally, physically and emotionally. Architectural experience can influence a positive change in service members and their families who have been affected by the repercussions of war and conflict.

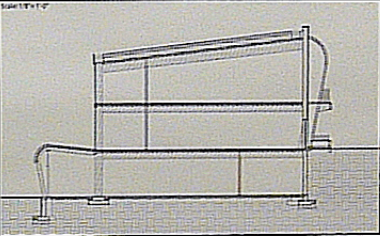
By creating an environment where users feel safe, welcome and can get access to the help they need, a step toward restoring psychological well-being, re-establishing a sense of belonging and improving quality of life is the goal.

The opportunity for this project is a better support facility located in St. Cloud, Minnesota for service members returning from deployment and for their families.

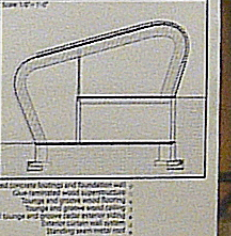
In order for positive change to occur, it is important to provide a facility where the user feels safe and welcome. The goal for the design was to provide the proper spaces necessary for many different types of social engagement as well as spaces for private reflection to accommodate each user's different needs.



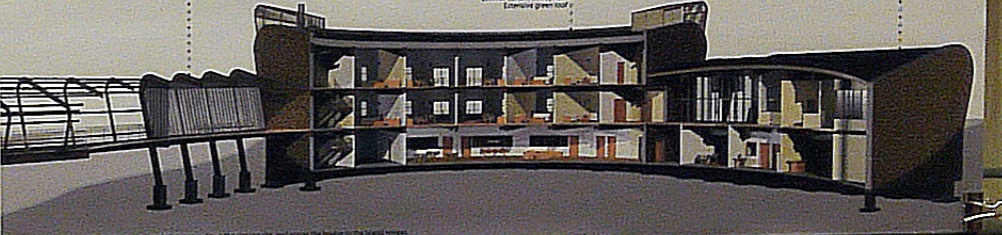
Clear horizontal wood architectural detail provides a sense of openness and light.



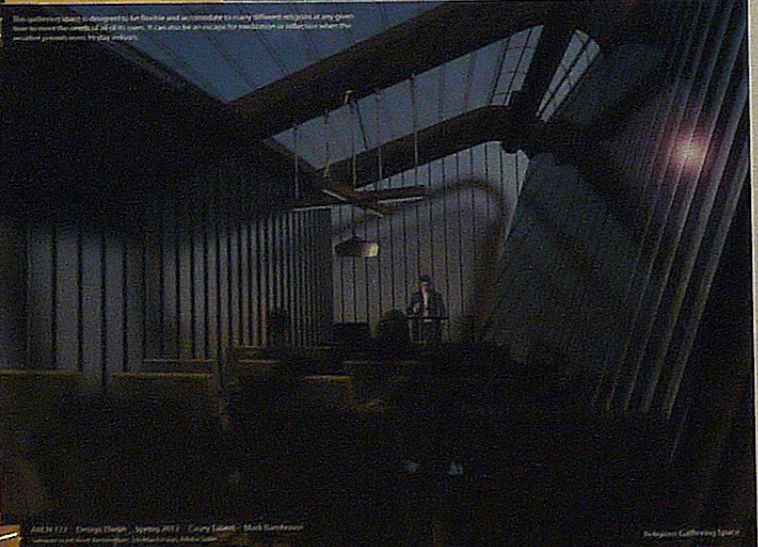
Architectural concrete ceiling and foundation wall create a sense of depth and texture.



Horizontal lounge and green under exterior lighting creates a sense of calm and relaxation.



The curved form allows the user through the interior spaces, open the space and embrace the natural beauty of the site.



The interior design is intended to be flexible and accommodate various different designs at any given time. The design of the interior is intended to be flexible and accommodate various different designs at any given time.



The design of modern, modern, gathering spaces throughout the building gives an intimate feeling where users can find calm. It also gives users options depending on their space, work and needs.



A high level of detail and craftsmanship is evident in the building's interior, creating a sense of calm and relaxation.

