



THE SHOPPES ON MAIN: developing a sense of place

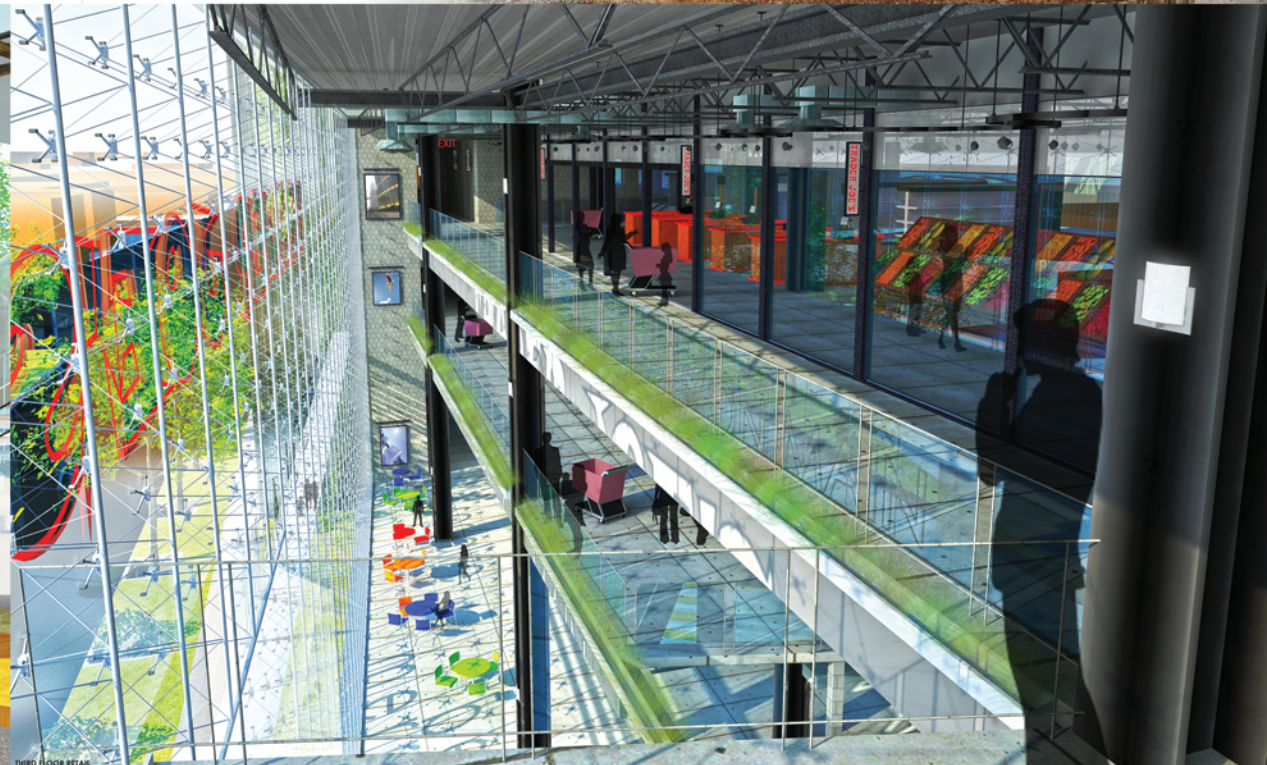
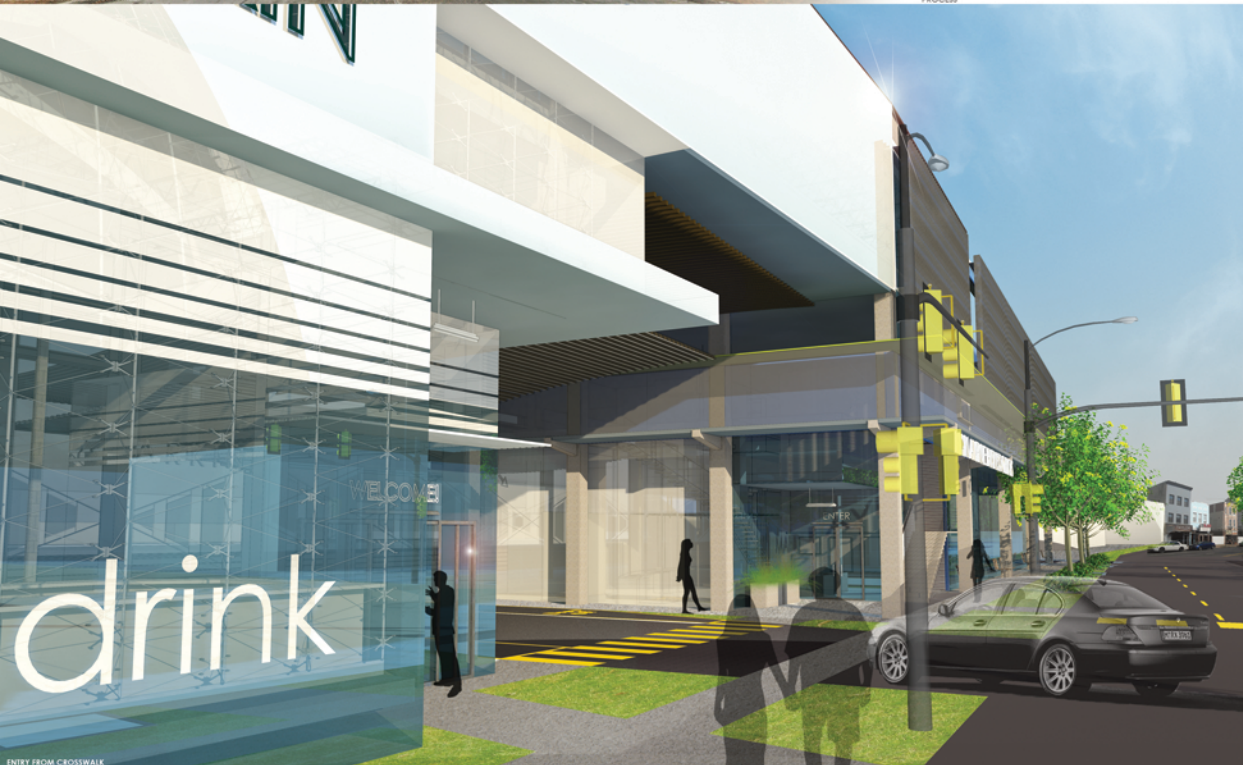
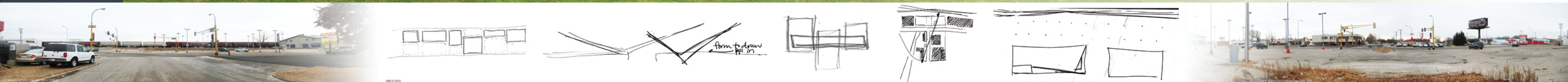
This project is an example of what could take place along Main Avenue in Fargo, North Dakota.

Fargo has a great downtown—alive, thriving, growing—and the gateway to that center of business and leisure has been lacking. Lately for more than a decade, The Shoppes on Main is a project dedicated to reevaluating Main Avenue. How can architecture create a sense of place in an urban environment?

The Shoppes on Main form that sense of place by bridging the gap between the design disciplines. Architecture, landscape architecture, urban design, and planning all contributed to the design and master plan from the start.

Located on Main Avenue and 18th Street, The Shoppes on Main serves a variety of people ranging from families in the housing to the South, to the business person coming from their office downtown, to the pedestrian walking by in search of a quick treat, even to the city visitor who would like to enjoy Fargo via rooftop.

Opportunities await you at The Shoppes on Main!



Contextual design decisions have been made to ensure the comfort and ease of movement to all users. How do you want to use the building? How was the building designed for you? Perhaps one of these scenarios describes you and your journey through the space.

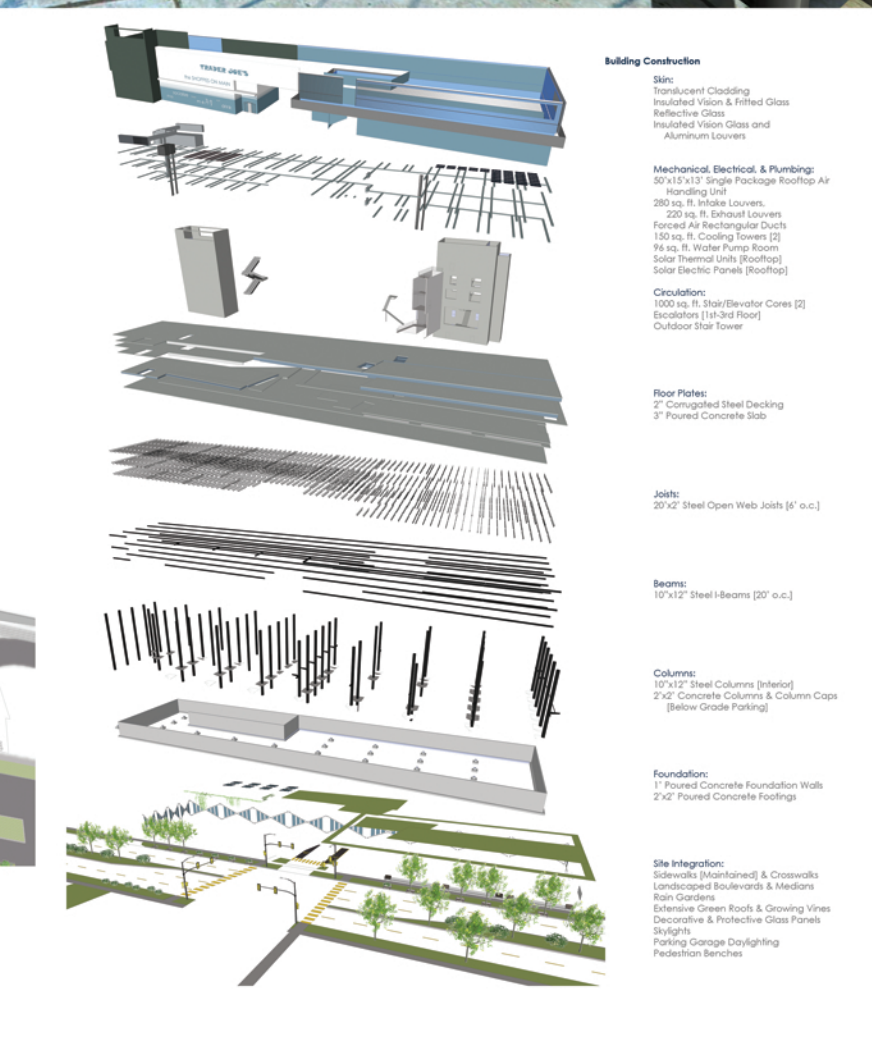
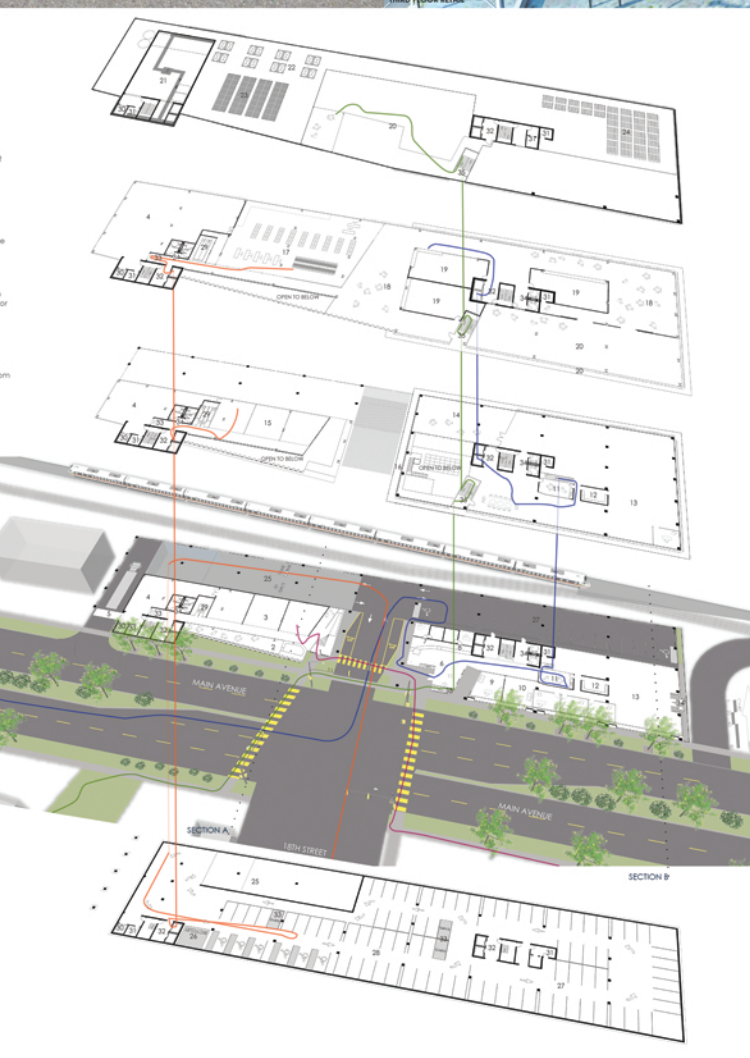
Parents and Children Going Grocery Shopping: Before going parking is accessible to the public. Services like strollers and their destination quickly and easily. Shopping carts are available right off the available spaces and can be returned to the store.

A Pedestrian in Search of a Movie Rental or Coffee: Circulation paths have been designed for the site, making safety a priority. Convenience stores located on the first floor of the building at the entrance, but only a convenience store with accessible for parents, it also benefits shops nearby by being an "anchor store" and draws users to the location.

A Business Person: Sun rooms and interior stairs according to the space and program. On-grade and below-grade parking is available with the level of individual and small business office space. Shared stair and walk ways, and higher conference/meeting rooms are available, and the third floor offers a quiet area for business meetings.

Someone Out for a Walk Along Fargo's Greenway: Landscaping features will include stormwater management, providing benefits for pedestrians and increase safety. The outdoor stair tower offers users that by the walking opportunities to enjoy views of Fargo, while passively illuminating the interior of the building.

- ROOF GARDEN DESIGN FOR RAIN GARDEN & WALKING BACK EDWARDS
- LANDSCAPE ARCHITECTURE
- ARCHITECTURE
- CIVIL ENGINEERING
- ELECTRICAL ENGINEERING
- ENVIRONMENTAL ENGINEERING
- GEOTECHNICAL ENGINEERING
- MECHANICAL ENGINEERING
- PLUMBING ENGINEERING
- STRUCTURAL ENGINEERING
- TRAFFIC ENGINEERING
- URBAN DESIGN
- WATER RESOURCES ENGINEERING



- Building Construction**
- Slab: Translucent Cladding, Insulated Glass & Reflected Glass, Reflective Glass, Insulated Glass and Aluminum Louvers
- Mechanical, Electrical & Plumbing**
- 30' x 12' x 17' Single Package Rooftop Air Conditioning Unit
 - 200' sq. ft. Brake Louvers
 - 200' sq. ft. Exhaust Louvers
 - 100' sq. ft. Radiant Ceiling Units
 - 100' sq. ft. Cooling Towers (2)
 - 10' x 6' x 10' Water Panels (Roof)
 - Water Treatment Units (Roof)
 - Solar Electric Panels (Roof)
- Cooling:**
- 1000 sq. ft. Heat Exchanger Cores (2)
 - Exhaust (10' x 6' Roof)
 - Outdoor Star Tower
- Roof Poles:**
- 2" Corrugated Steel Decking
 - 3" Poured Concrete Slab
- Joist:**
- 20' x 22' Steel Open Web Joist (3' o.c.)
- Beams:**
- 18' x 12' Steel Beams (20' o.c.)
- Columns:**
- 2' x 2' x 12' Steel Columns (Intelli)
 - 2' x 2' Concrete Columns & Column Caps (Below-Grade Parking)
- Foundation:**
- 1' Poured Concrete Foundation Walls
 - 2' x 2' Poured Concrete Footings