

Return

to

Symbiosis

Question

How can an architect inspire a change of relationship between humans and the environment from parasitism back to commensalism or mutualism?

Question

How can an architect inspire a change of relationship between humans and the environment from parasitism back to commensalism or mutualism?

Inspire

Relationship

Mutualism

Research

Change

Unwillingness to change

- people are comfortable where they are at
- Afraid of change, afraid of the unknown

Typology

Montessori Elementary School

Montessori

- multiage groupings that foster peer learning

- uninterrupted blocks of work time

- guided choice of work activity

- Montessori students learn through sensory-motor activities, working with materials that develop their cognitive powers through direct experience: seeing, hearing, tasting, smelling, touching, and movement

- the child continues to organize their thinking through work with the Montessori learning materials and an interdisciplinary curriculum as they pass from the concrete to the abstract. They begin the application of their knowledge to real-world experiences.

Interviews

- Openness

- Natural Light

- Green Spaces

- Natural Materials (wood)

- Multi-use Spaces

First hand experience

Phenomena

-an appearance or immediate object of awareness in experience

Merleau-Ponty- True consciousness in its very structure is intentional, that it is oriented toward objects, it is this orientation that places consciousness in direct touch with perceptual objects and opens the way to description.

Relationship



Jud Nelson, Hefty 2-Ply, 1979-1981

Fargo

52nd Ave S

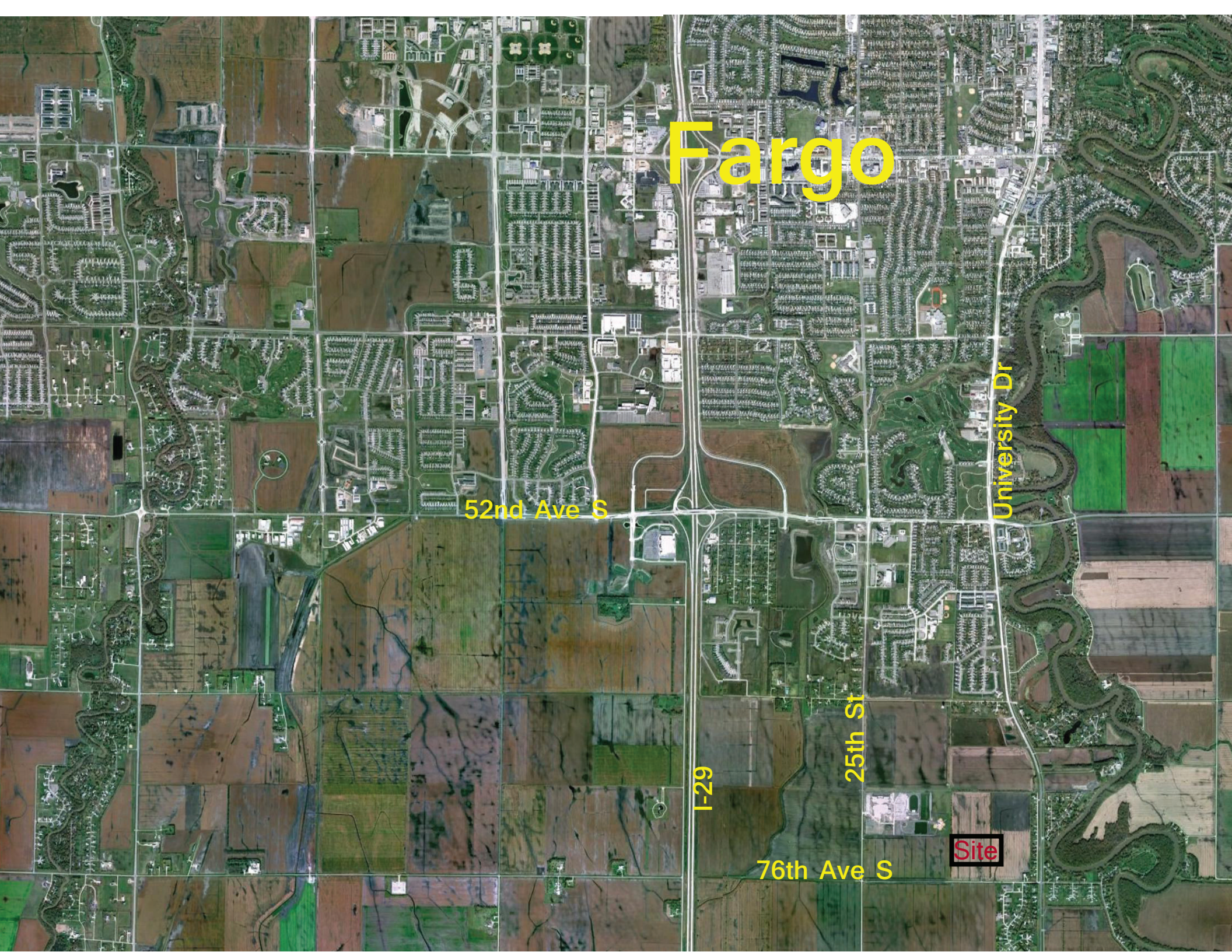
University Dr

I-29

25th St

76th Ave S

Site



Davies High School

Boys and Girls Ranch

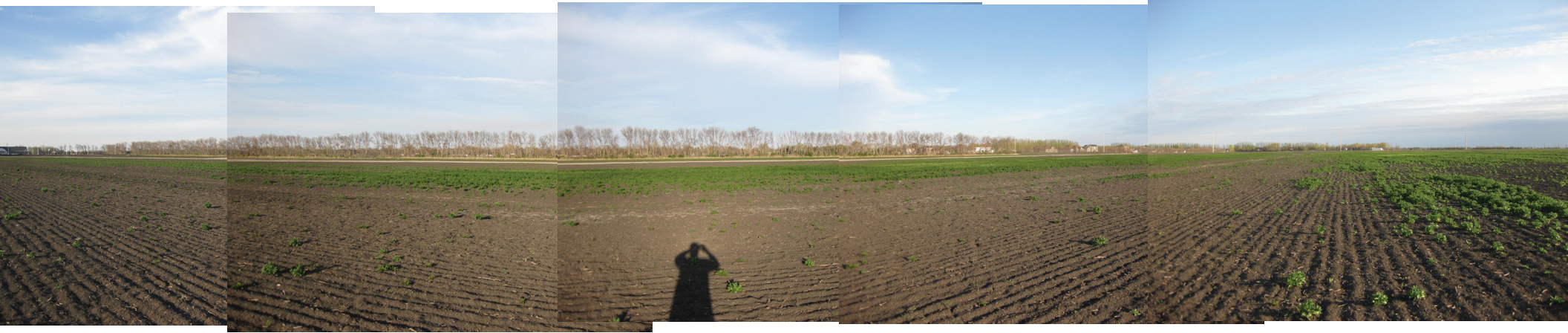
Site

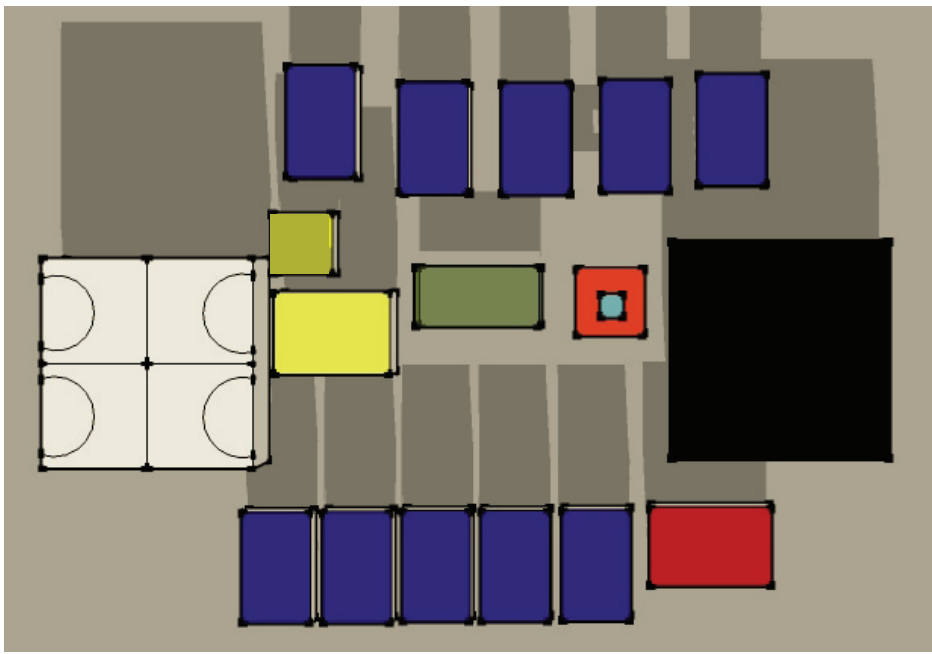
25th St

76th Ave S

University Dr







Environment

Administration

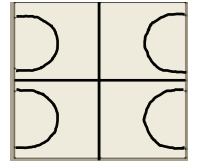
Cafeteria

Green House

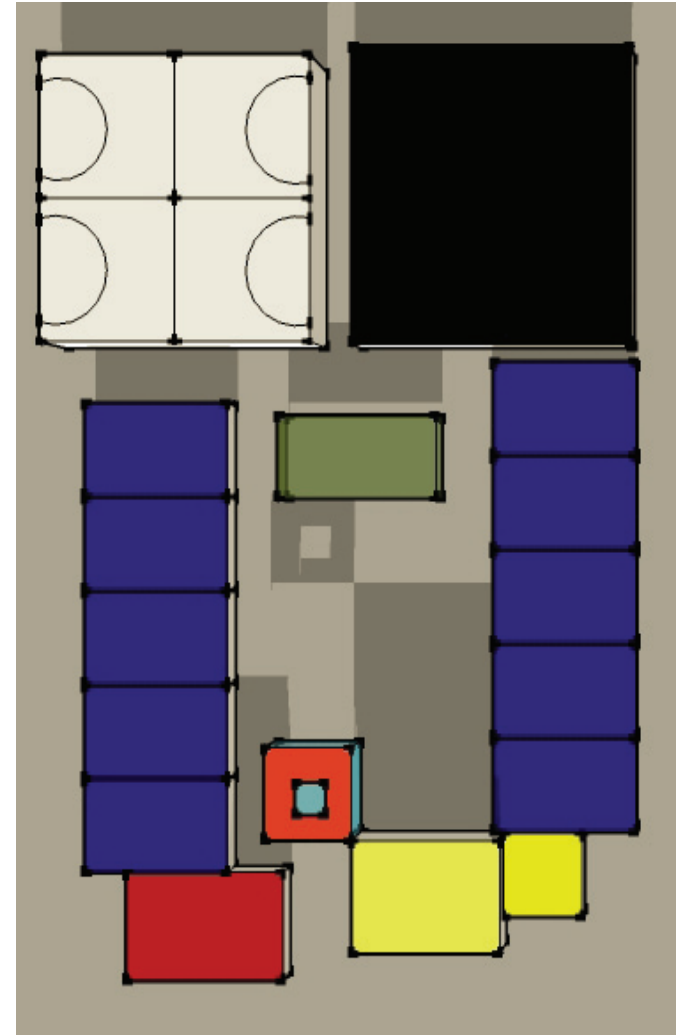
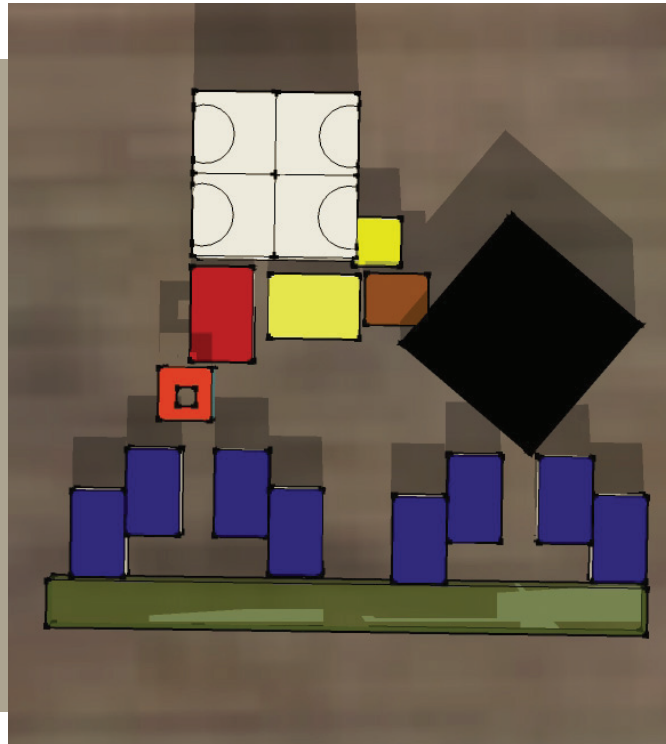
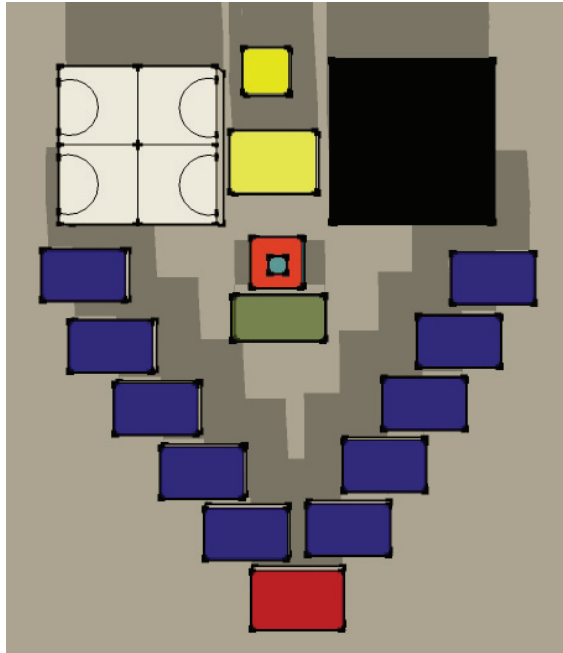
Library

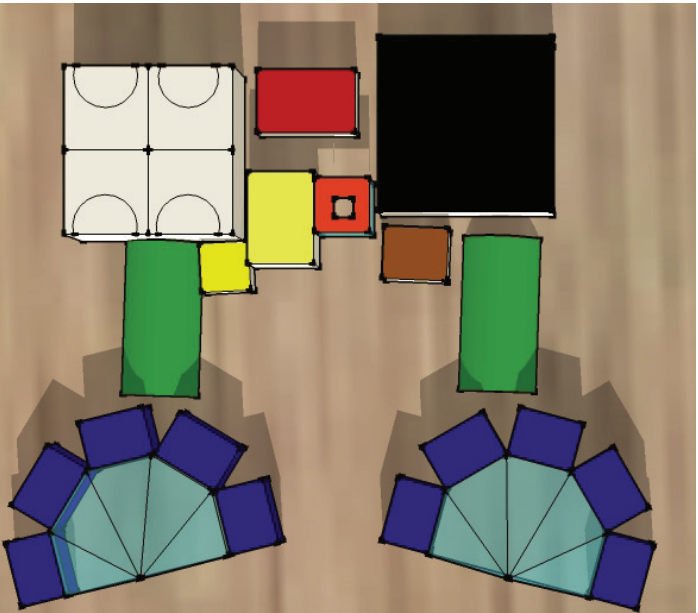
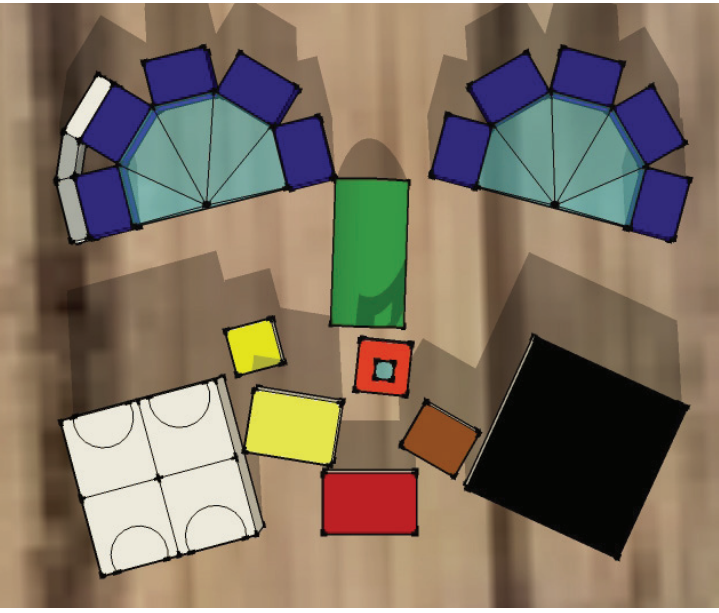
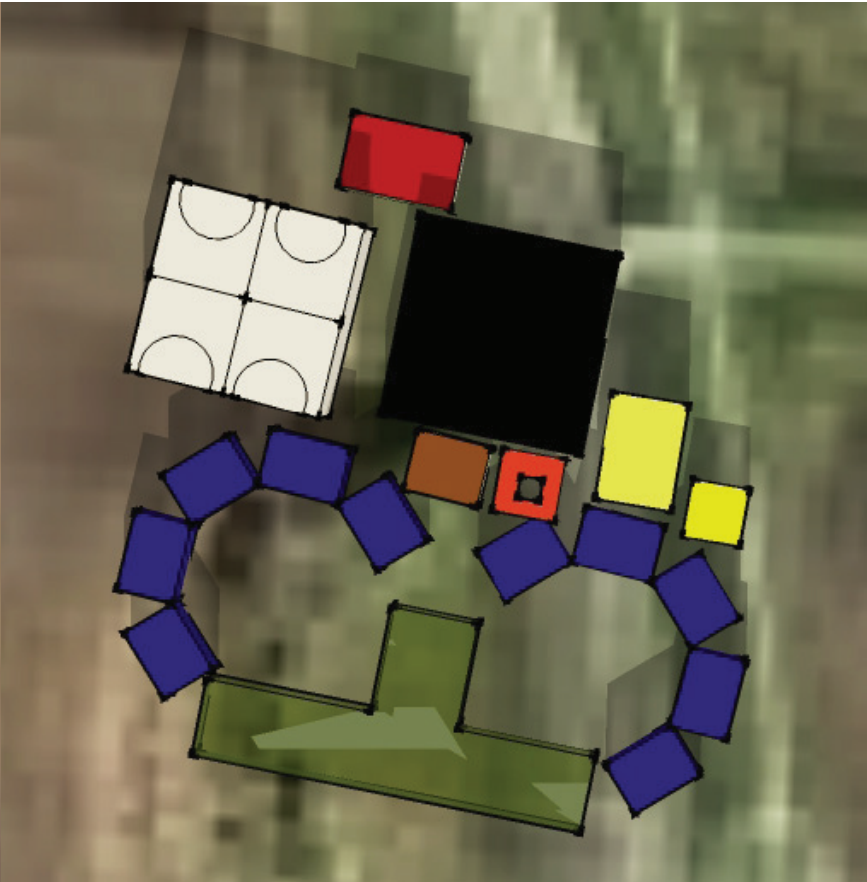
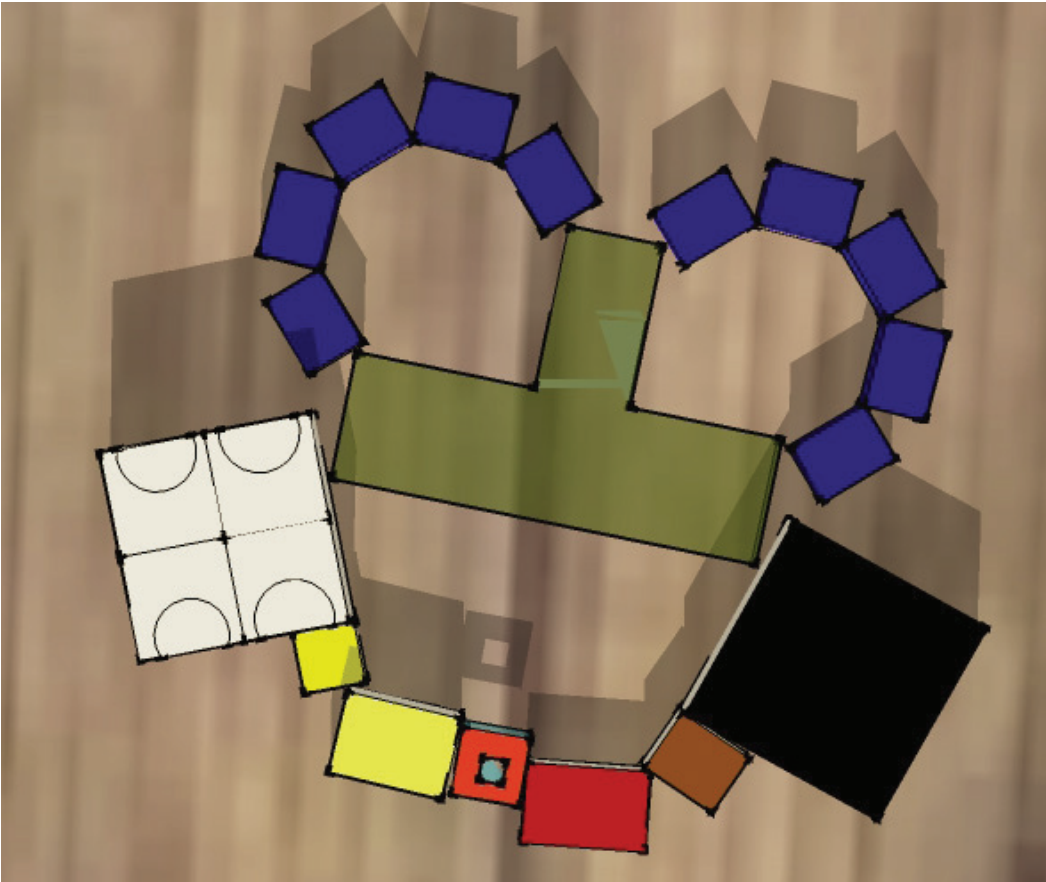
Kitchen

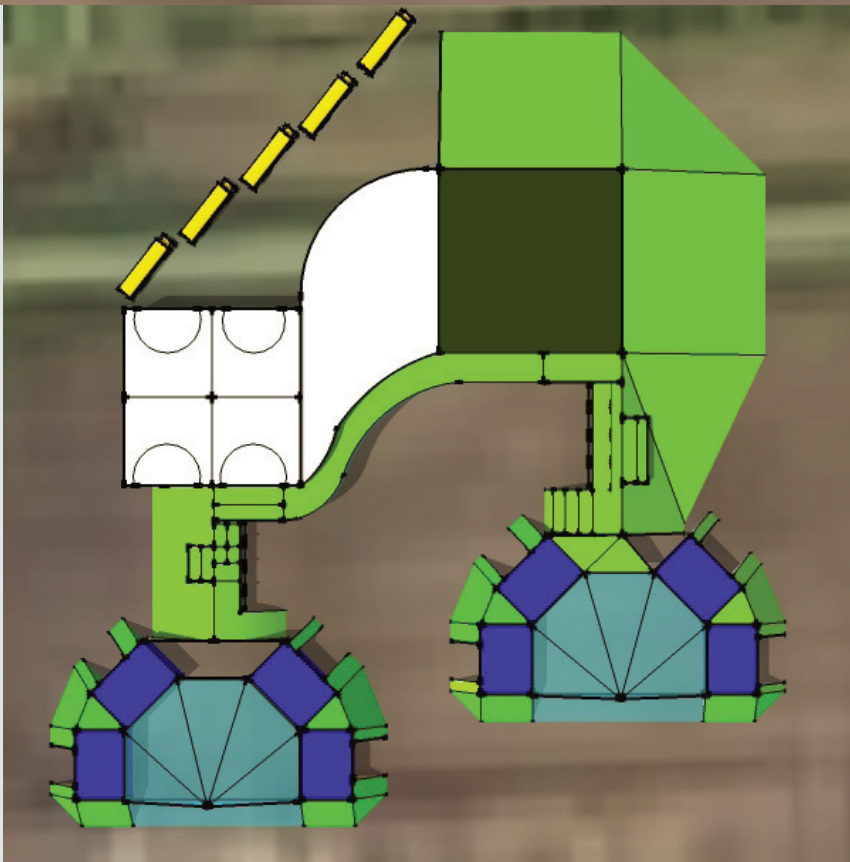
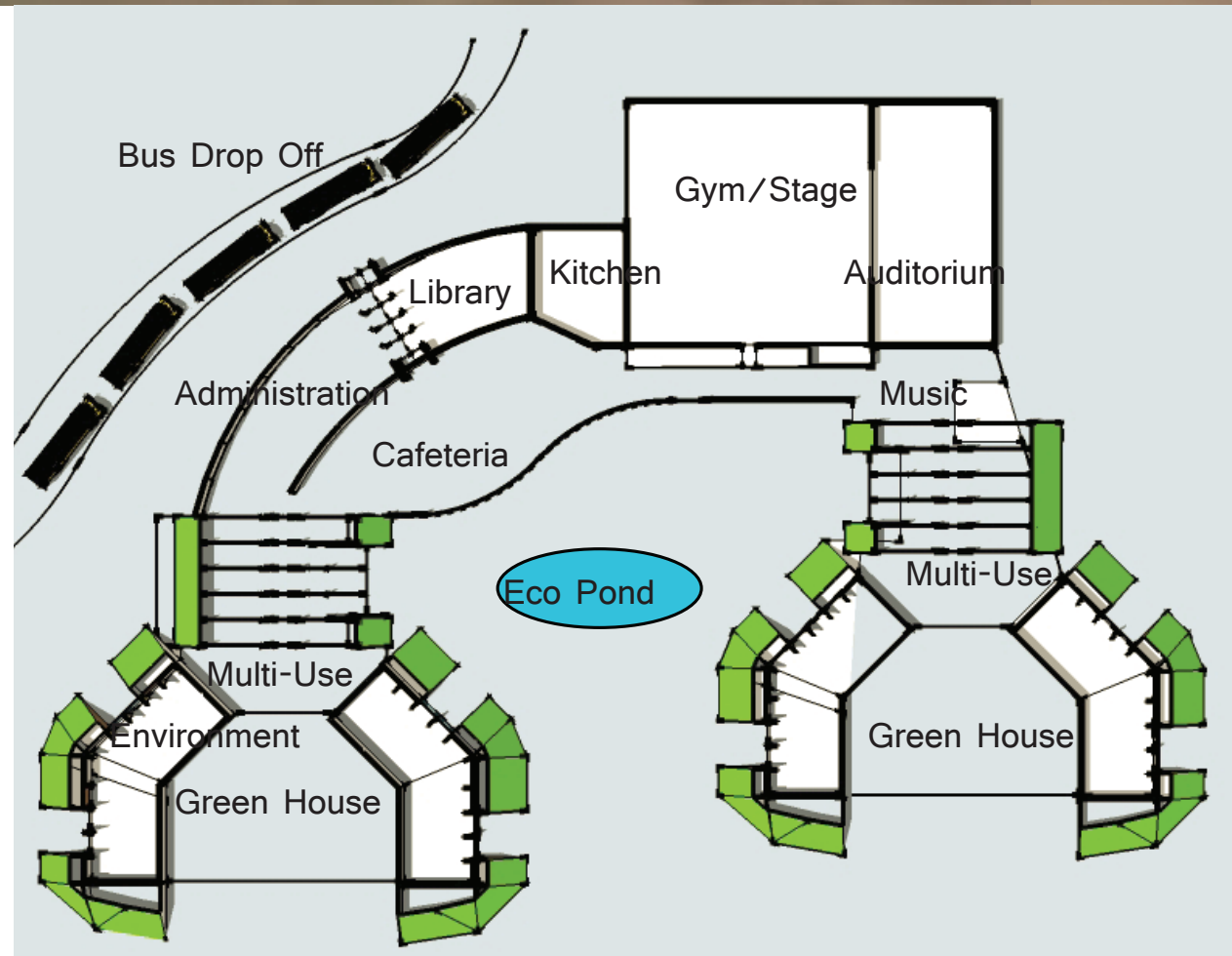
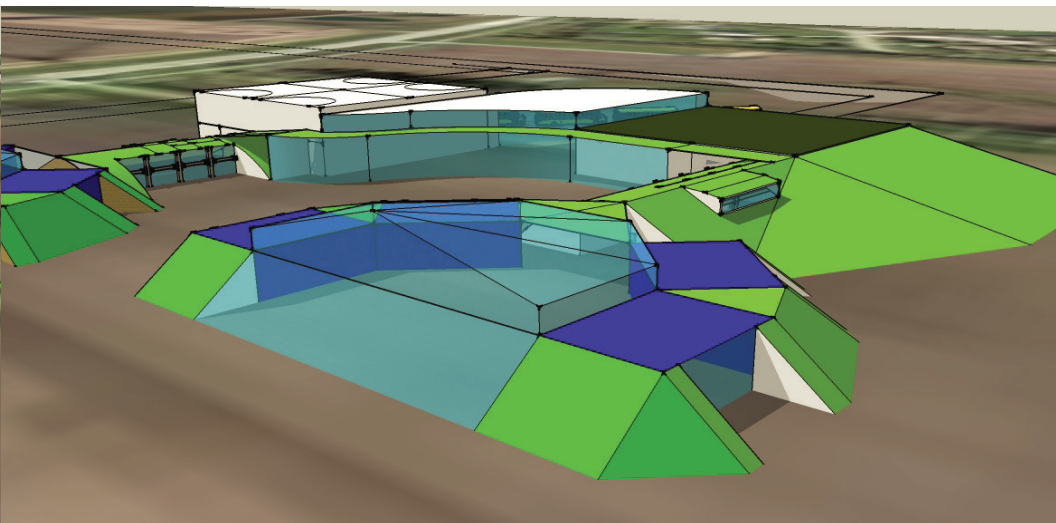
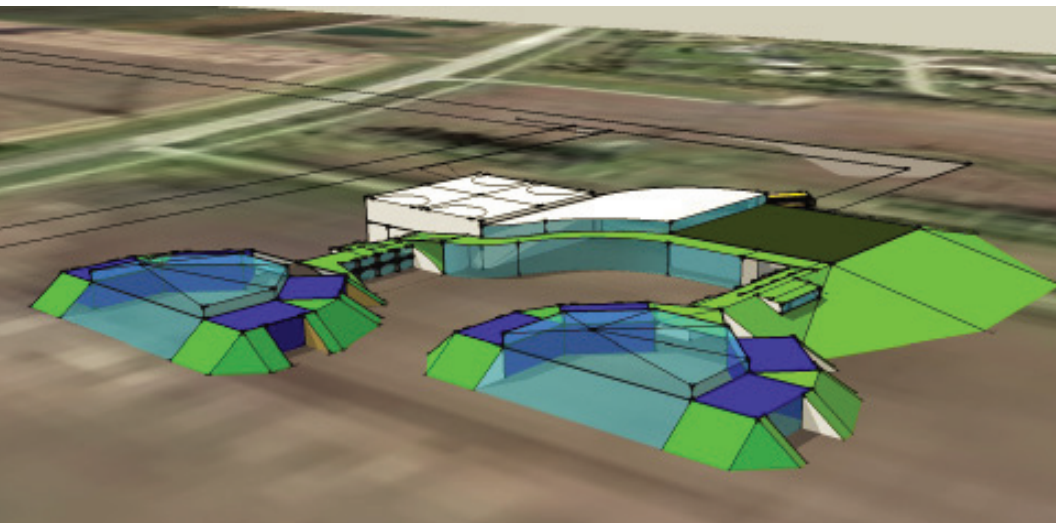
Auditorium



Gym

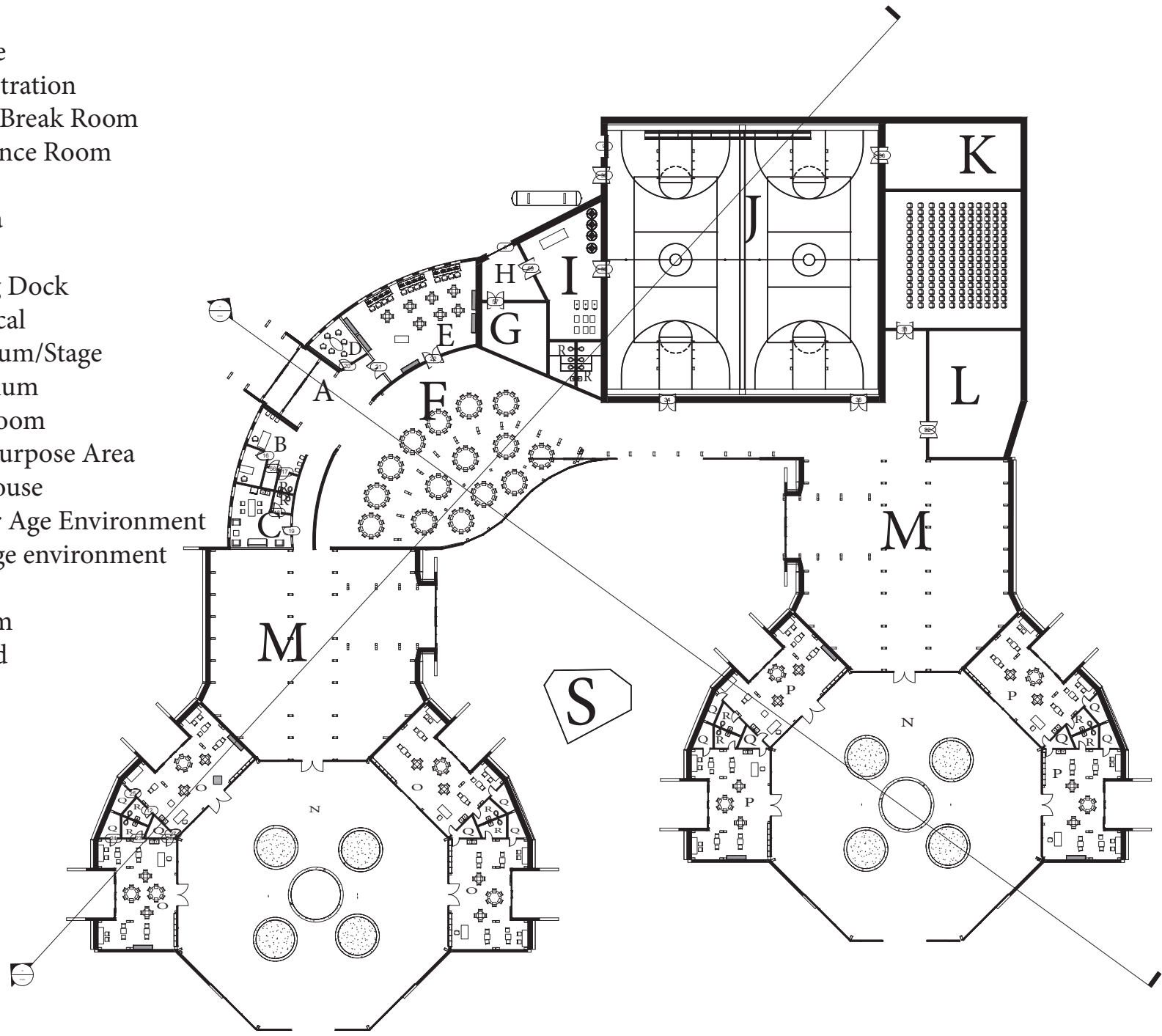


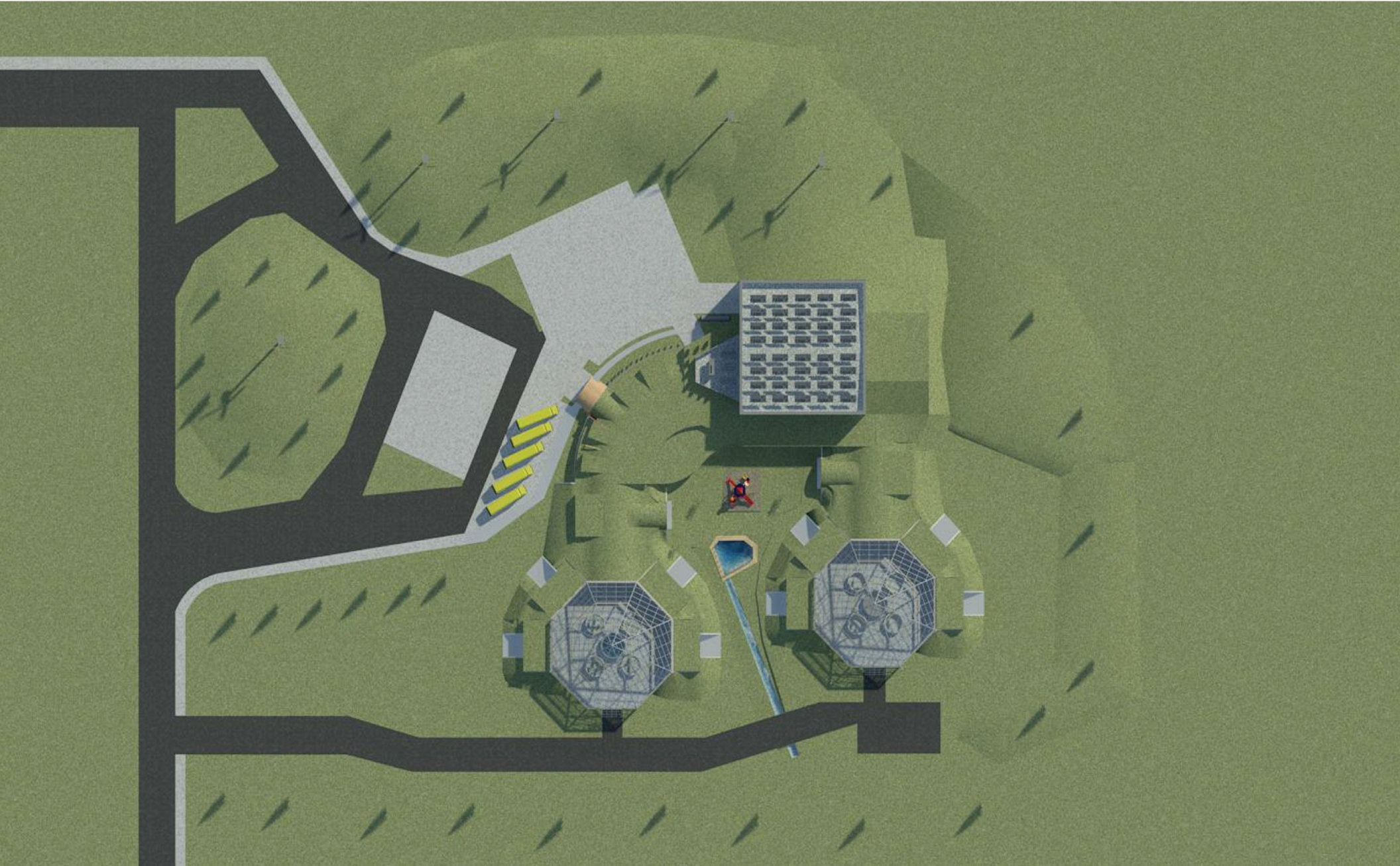






- A-Entrance
- B-Administration
- C-Lounge/Break Room
- D-Conference Room
- E-Library
- F-Cafeteria
- G-Kitchen
- H-Loading Dock
- I-Mechanical
- J-Gymnasium/Stage
- K-Auditorium
- L-Music Room
- M-Multi-purpose Area
- N-Greenhouse
- O-Younger Age Environment
- P-Older Age environment
- Q-Storage
- R-Restroom
- S-Eco Pond





Question

How can an architect inspire a change of relationship between humans and the environment from parasitism back to commensalism or mutualism?

Inspire

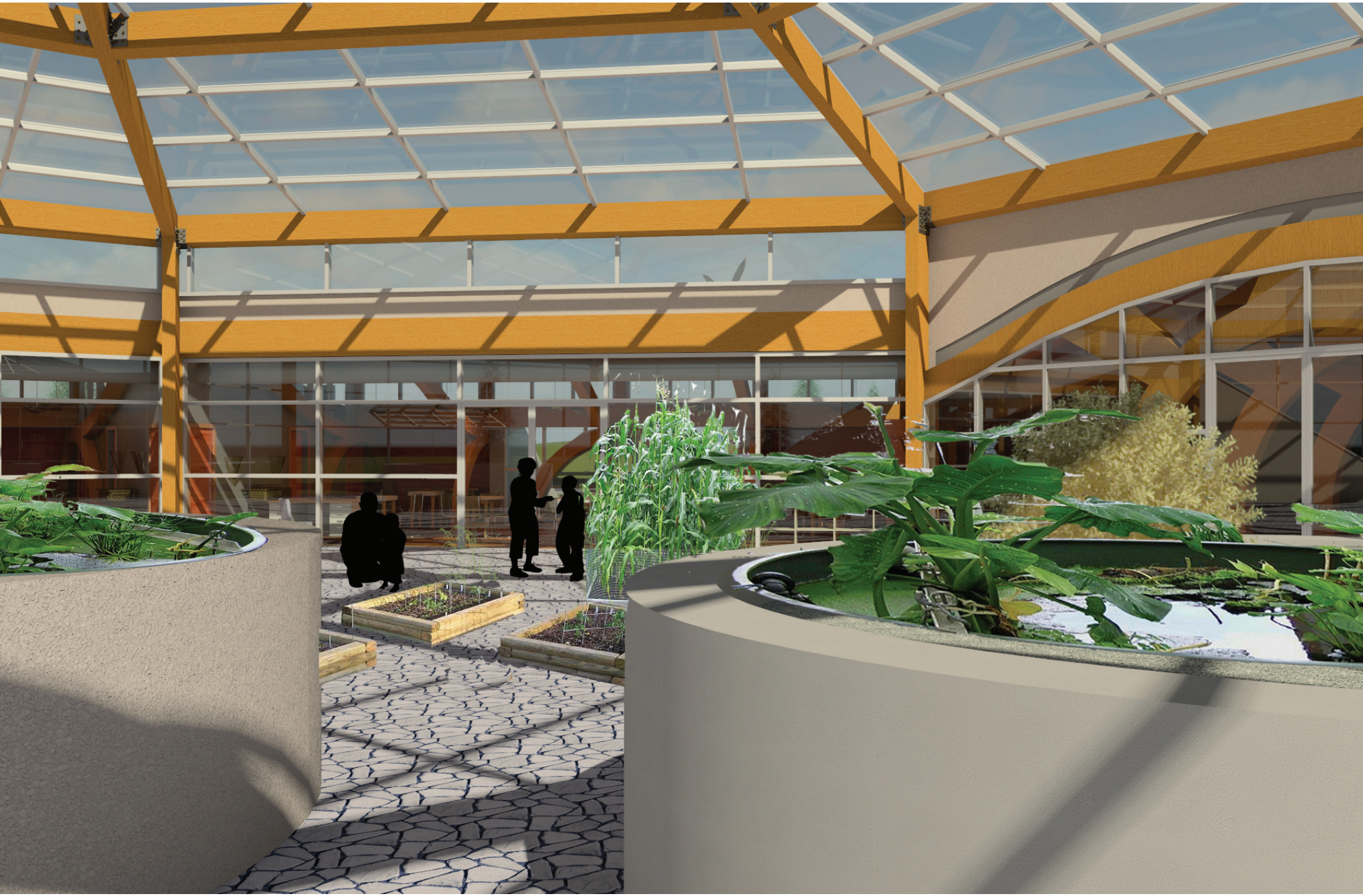
Relationship

Mutualism

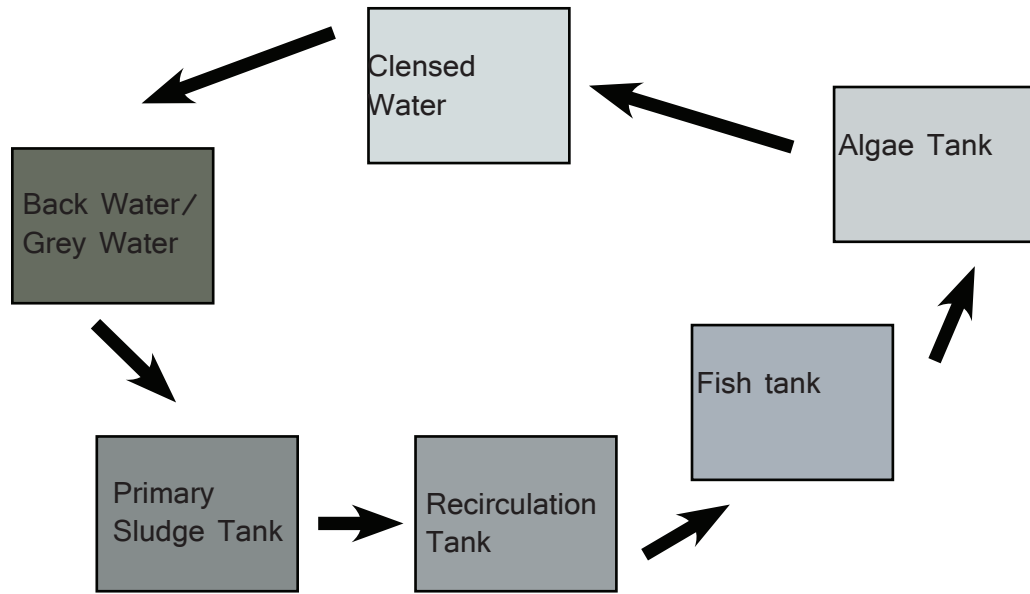








Living Machine



Compost Cycle

