

Framework | Context: Responsive Frameworks

MAIN ENTRY: ORGANIZATIONAL FORM

DEF | ORGANIZATION ARRANGEMENT
SYN | FRAMEWORK, PLAN, STRUCTURE

MAIN ENTRY: FRAMES

DEF | SKELETON, CASING
SYN | ARCHITECTURE, CASE, CARCASS, CONSTRUCTION, ENCLOSURE, FORM, FRAMEWORK, SHELL STRUCTURE

MAIN ENTRY: ORGANIZATION

DEF | ORGANIZATION ARRANGEMENT
SYN | ASSEMBLY, CONFIGURATION, DESIGN STRUCTURE, STRUCTURING

MAIN ENTRY: SHELL

DEF | STRUCTURE, COVERING
SYN | CASE, CARCASS, FRAME, FRAMEWORK, SKELETON, SKIN

MAIN ENTRY: STRUCTURE

DEF | MAKEUP, FORM
SYN | ARCHITECTURE, ARRANGEMENT, CONFIGURATION, FRAMEWORK, SKELETON

Framework | Context: Responsive Frameworks

MAIN ENTRY: FRAMEWORK

DEF | FOUNDATION, CORE
SYN | CASE, CARCASS, FRAME, PLAN, SKIN, SHELL, SKELETON, STRUCTURE

MAIN ENTRY: ARCHITECTURE

DEF | DESIGN STRUCTURE OF SOMETHING
SYN | COMPOSITION, CONSTITUTION, FRAMEWORK, CONSTRUCTION

MAIN ENTRY: BUILDING

DEF | COLLECTIVE BUILDING
SYN | ASSEMBLY, CONSTRUCTION, FRAMEWORK, INFRASTRUCTURE

MAIN ENTRY: CARCASS

DEF | DIRT BODY, FRAMEWORK, ROSE STRUCTURE
SYN | FRAMEWORK, SKIN, SKELETON

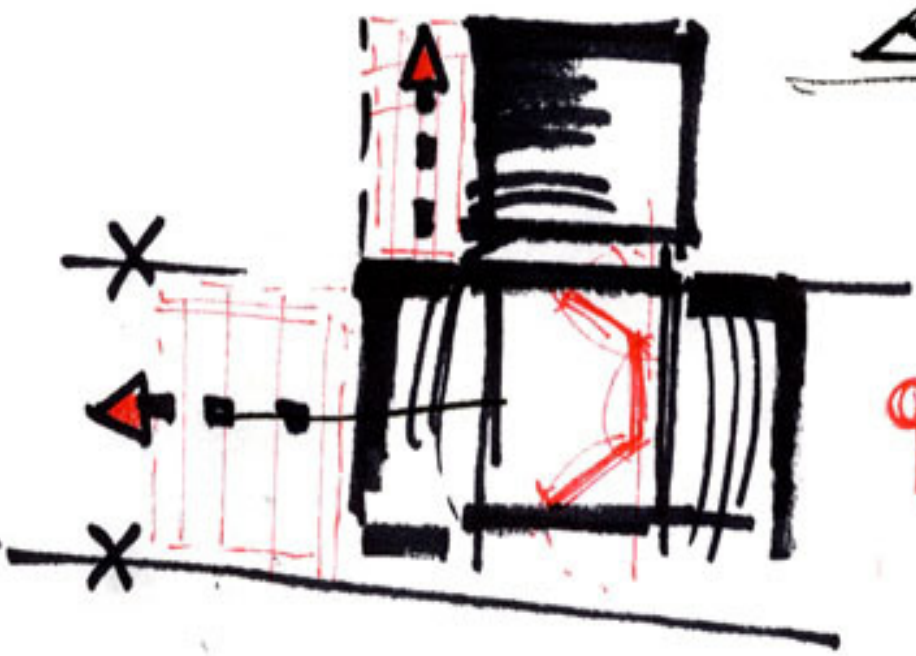
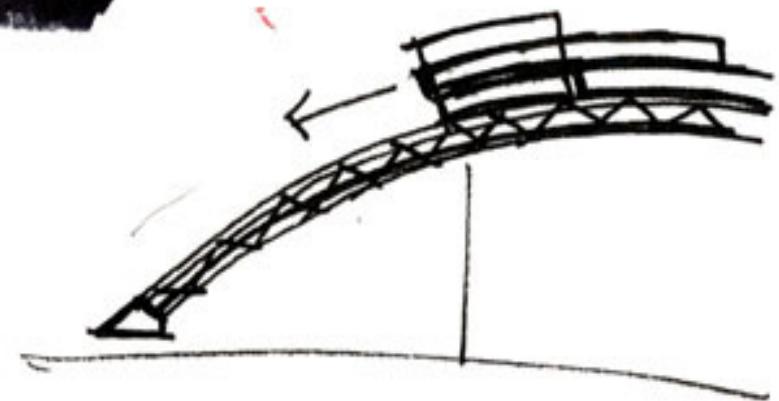
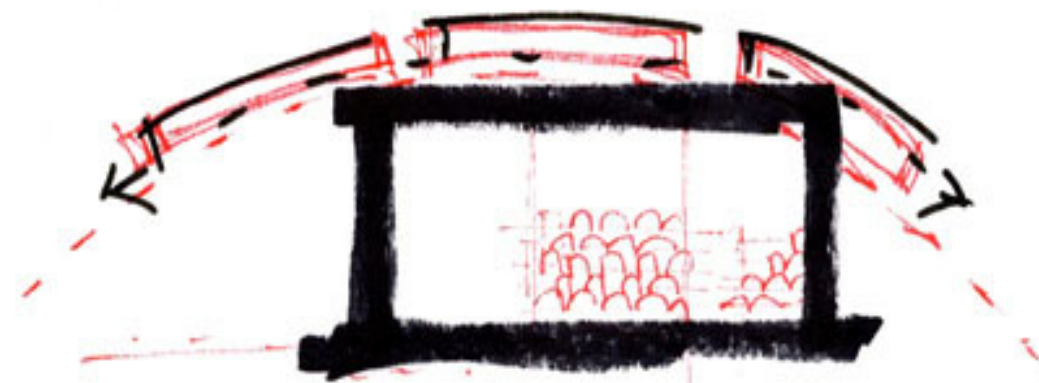
MAIN ENTRY: FIBRE

DEF | STRUCTURE
SYN | BUILDING, FOUNDATION, FRAME, FRAMEWORK

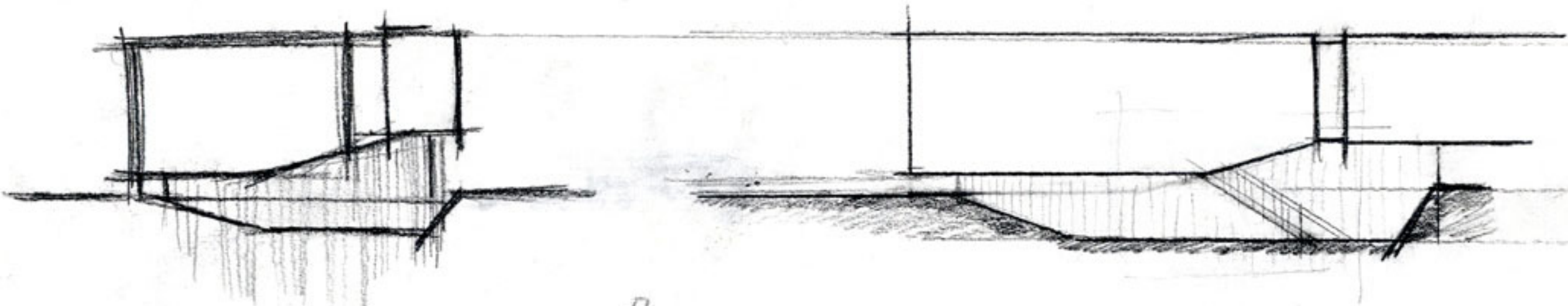
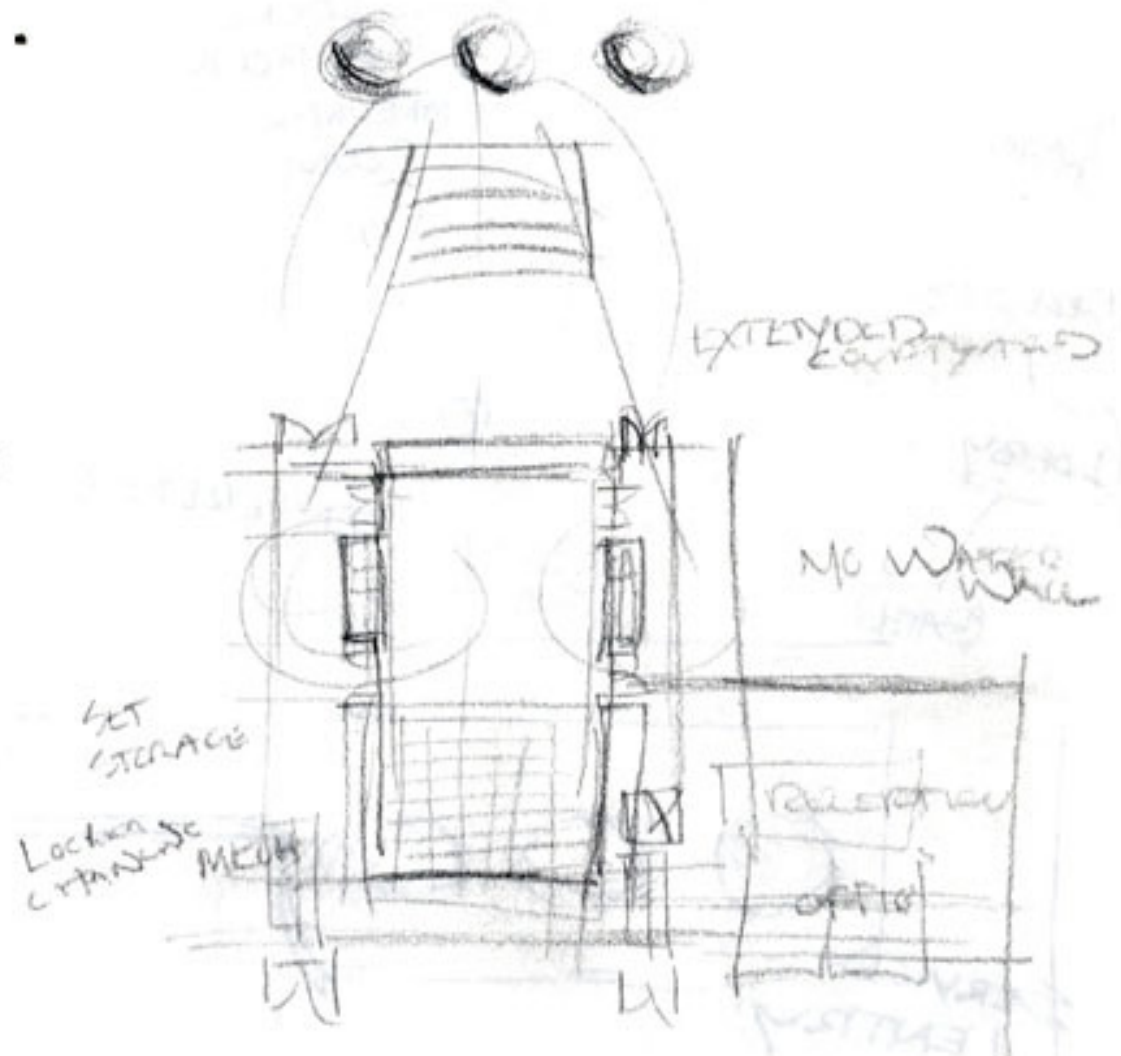
MAIN ENTRY: FORM

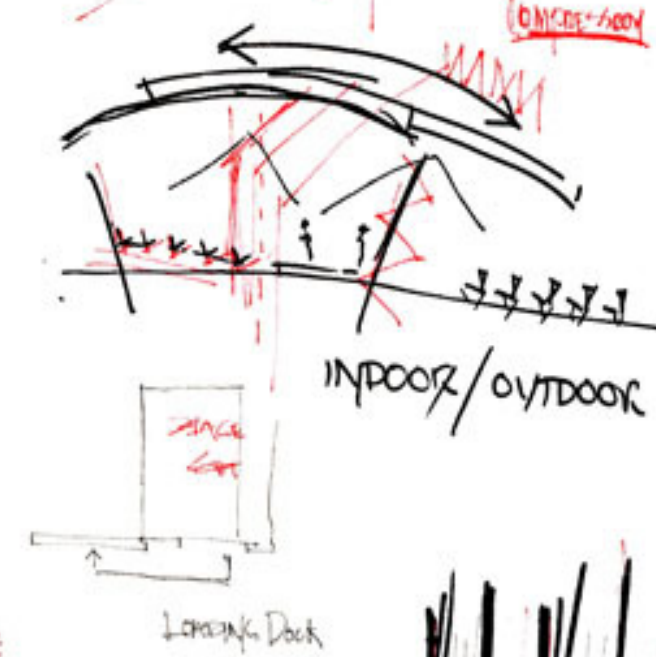
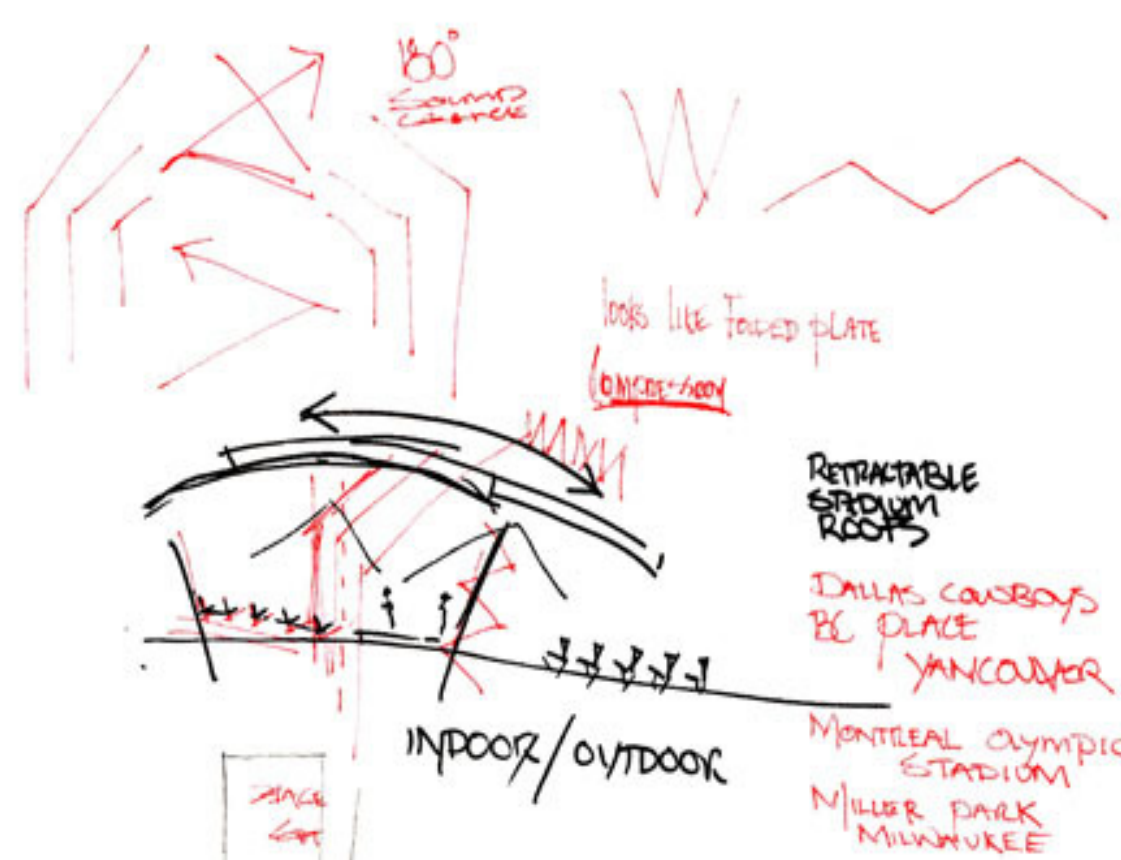
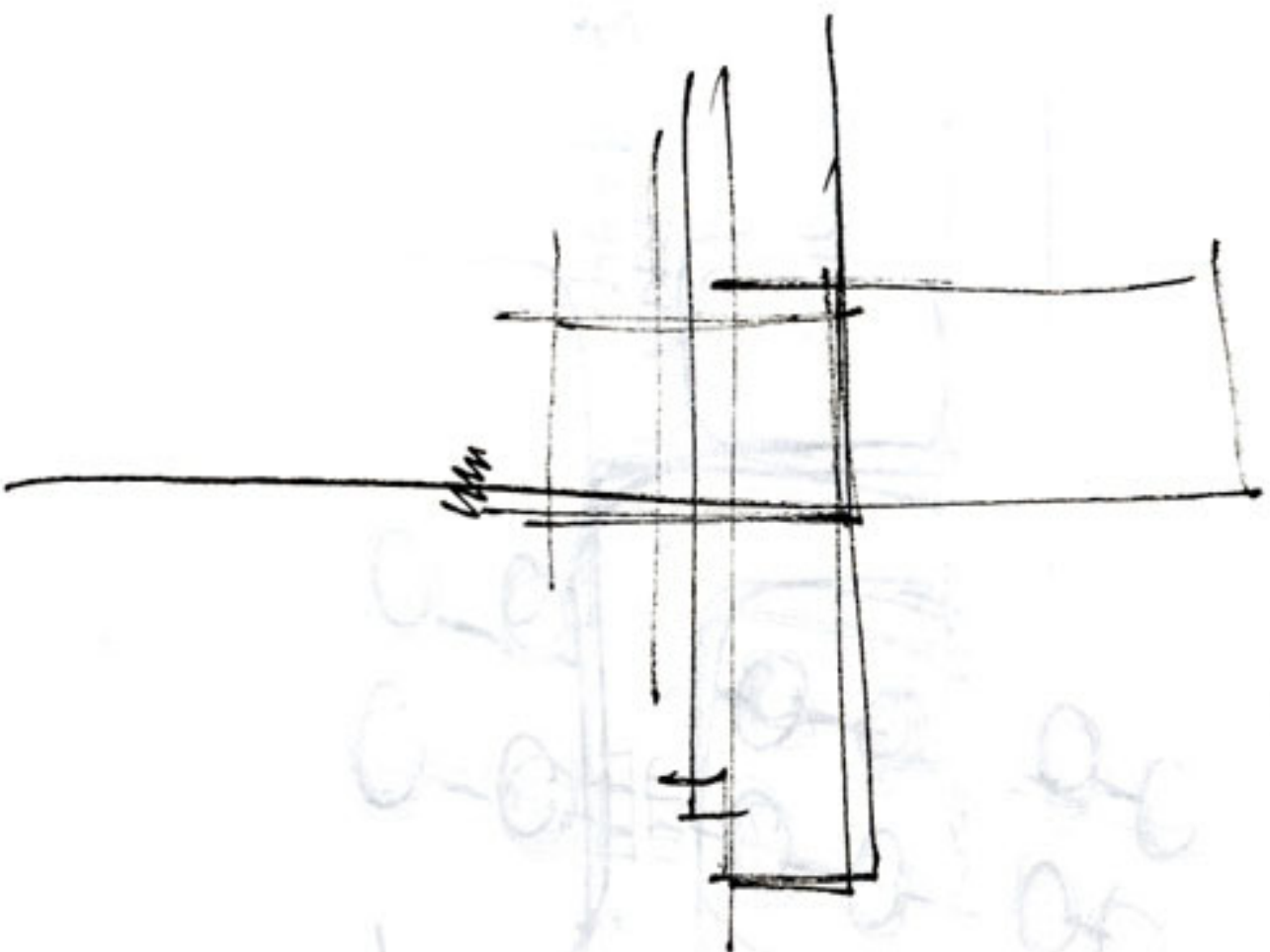
DEF | SHAPE, ARRANGEMENT
SYN | DESIGN, FOUNDATION, FRAMEWORK, MOLD, OUTLINE, SKELETON, STRUCTURE SYSTEM

design process sketchbook

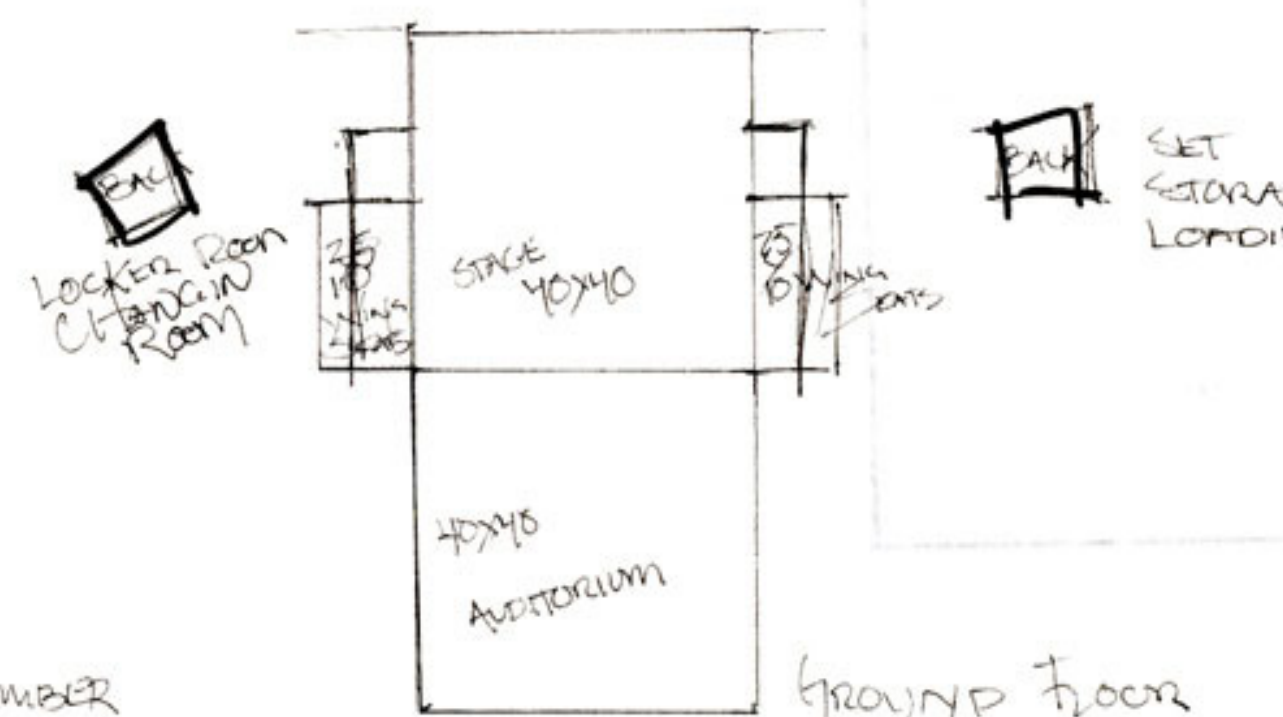


ADVANTAGE
 90° SOUND TRANS-
 FORMATION
 THEATER
 BANDSHELL



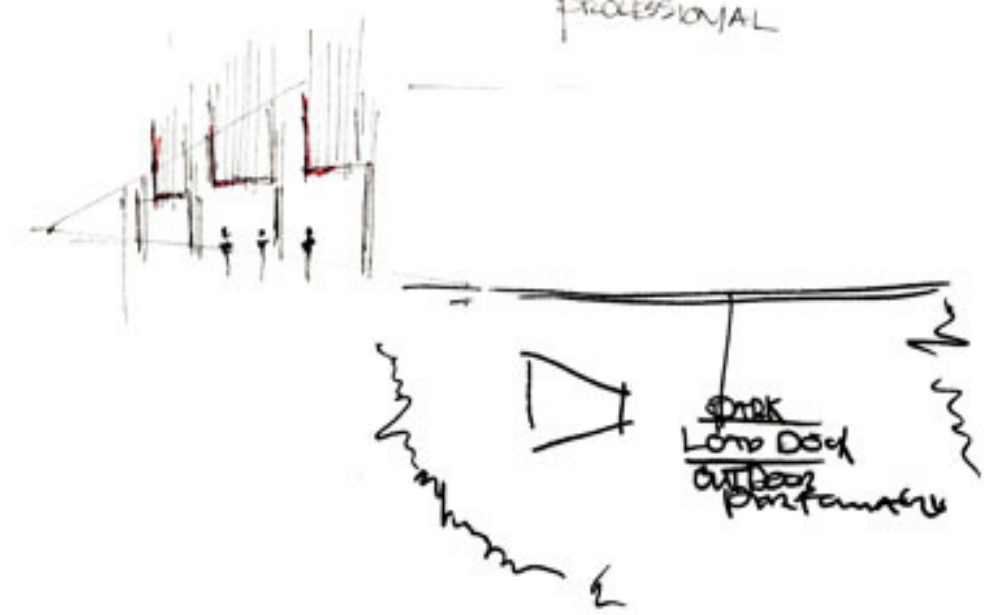


ADVANTAGE:
 OUTDOOR GALA
 OUTDOOR PERFORMANCE
 LOADING DOCK
 BAND SHELL
 PAVILLION
 LIGHT CONTROL?

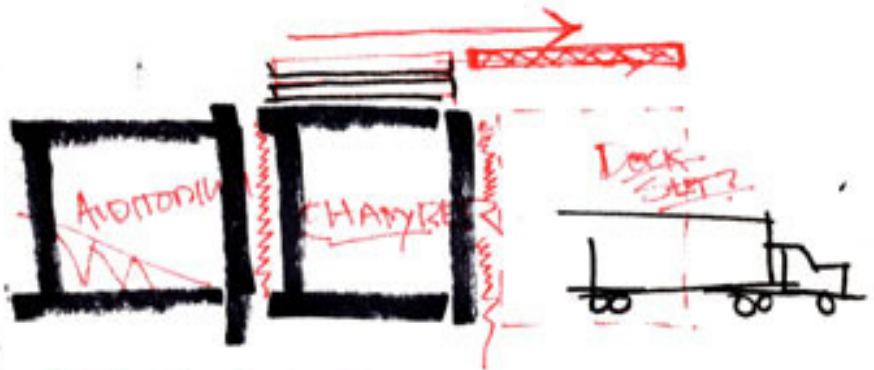
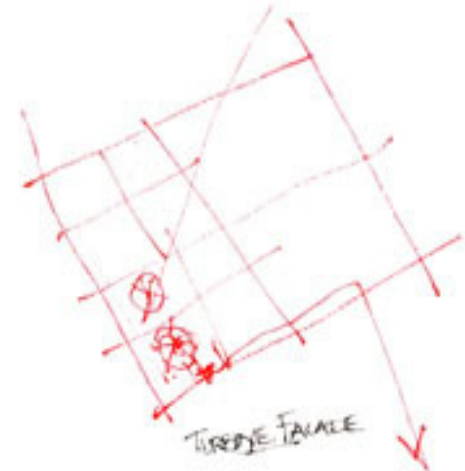
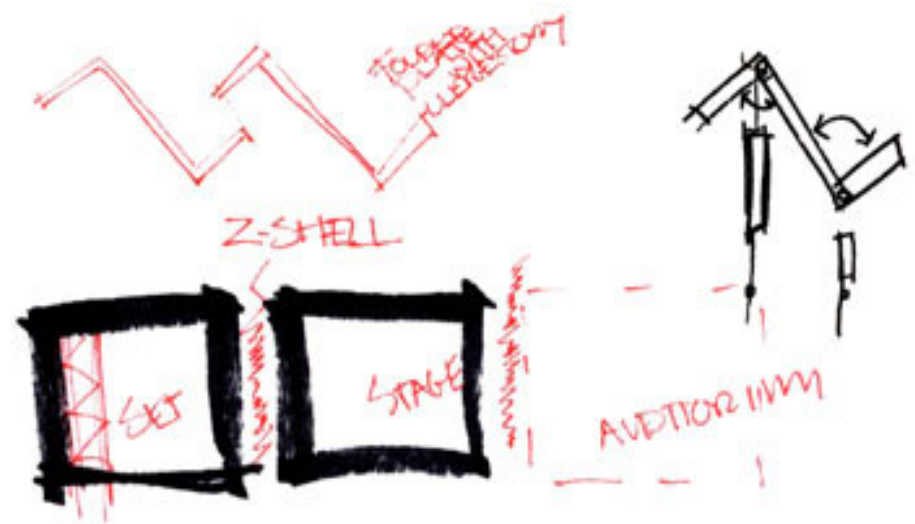


- CHAMBER
- FRONT OF HOUSE
- BACK OF HOUSE

GROUND FLOOR
 SECOND FLOOR



OFFICE

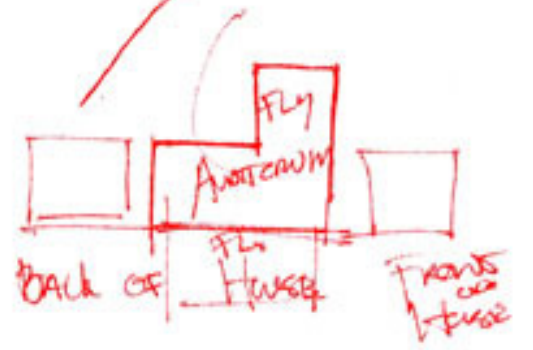


ARCHITECTURE IS ABOUT DOING THINGS NOT REPRESENTING THINGS

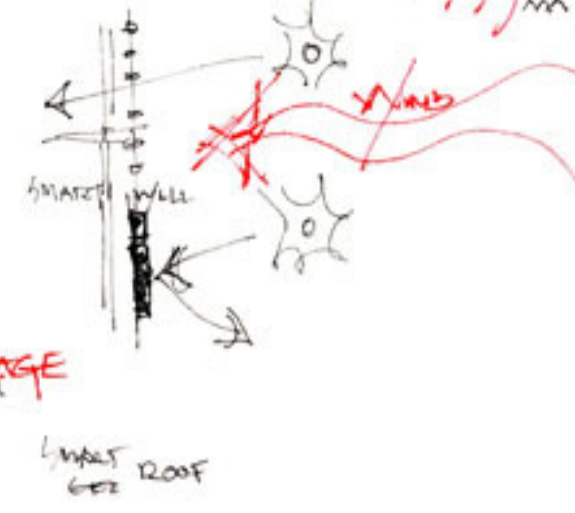
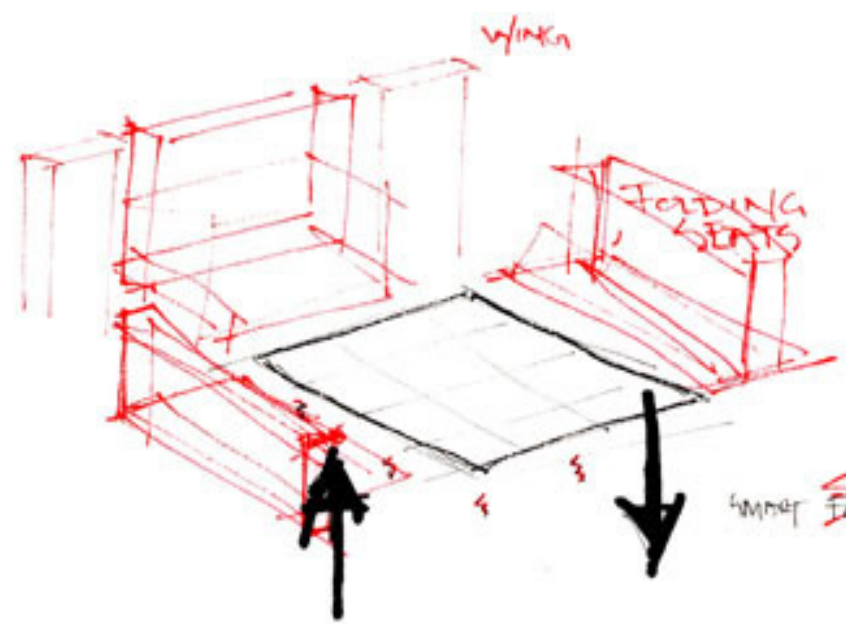
JUSTUS THINCE-TRAMVS

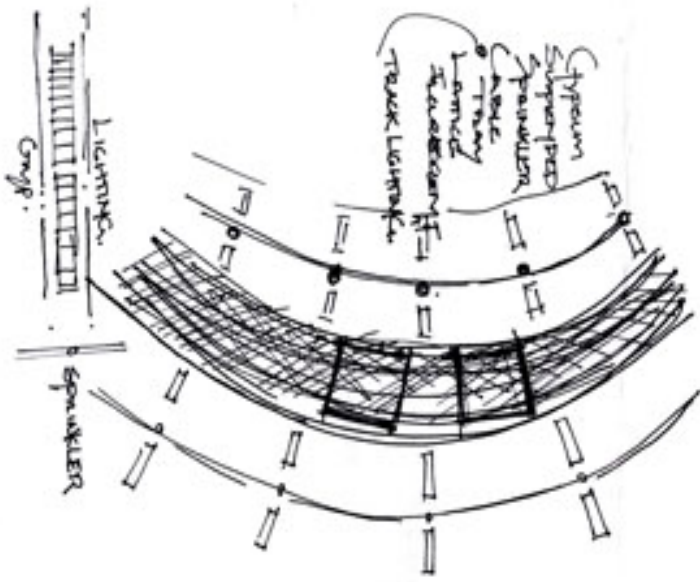


ADJACENCY study!



SET TO STAGE

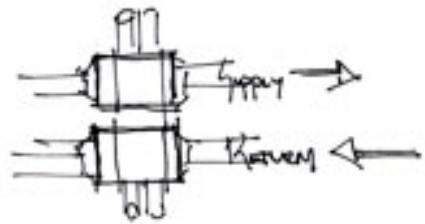




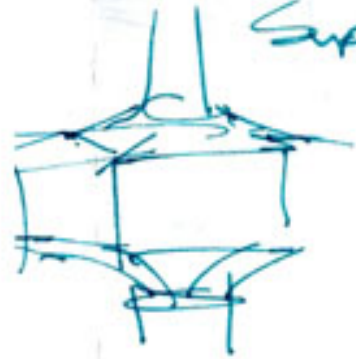
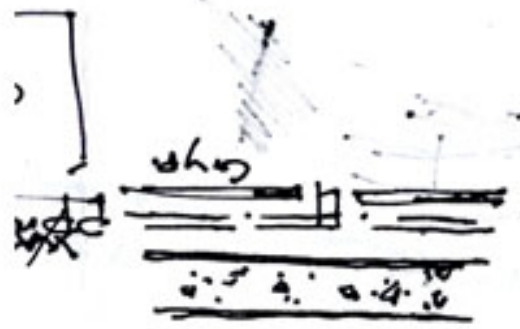
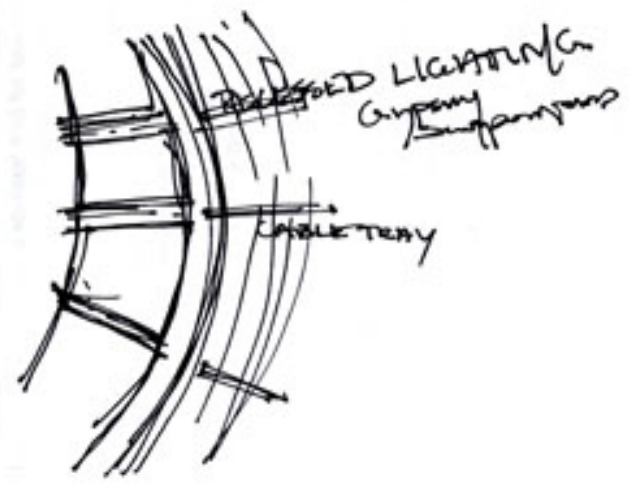
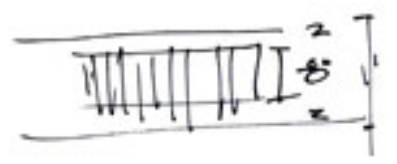
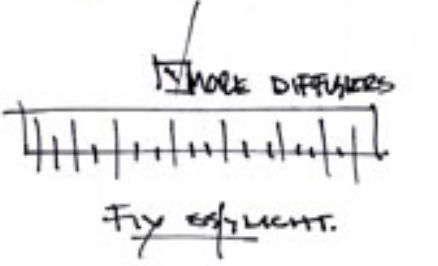
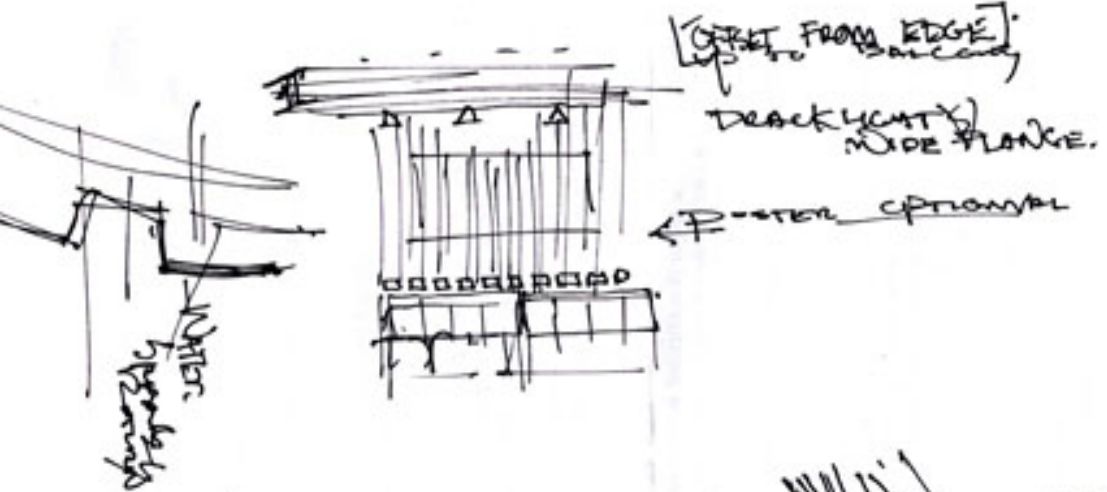
TRACK LIGHTING



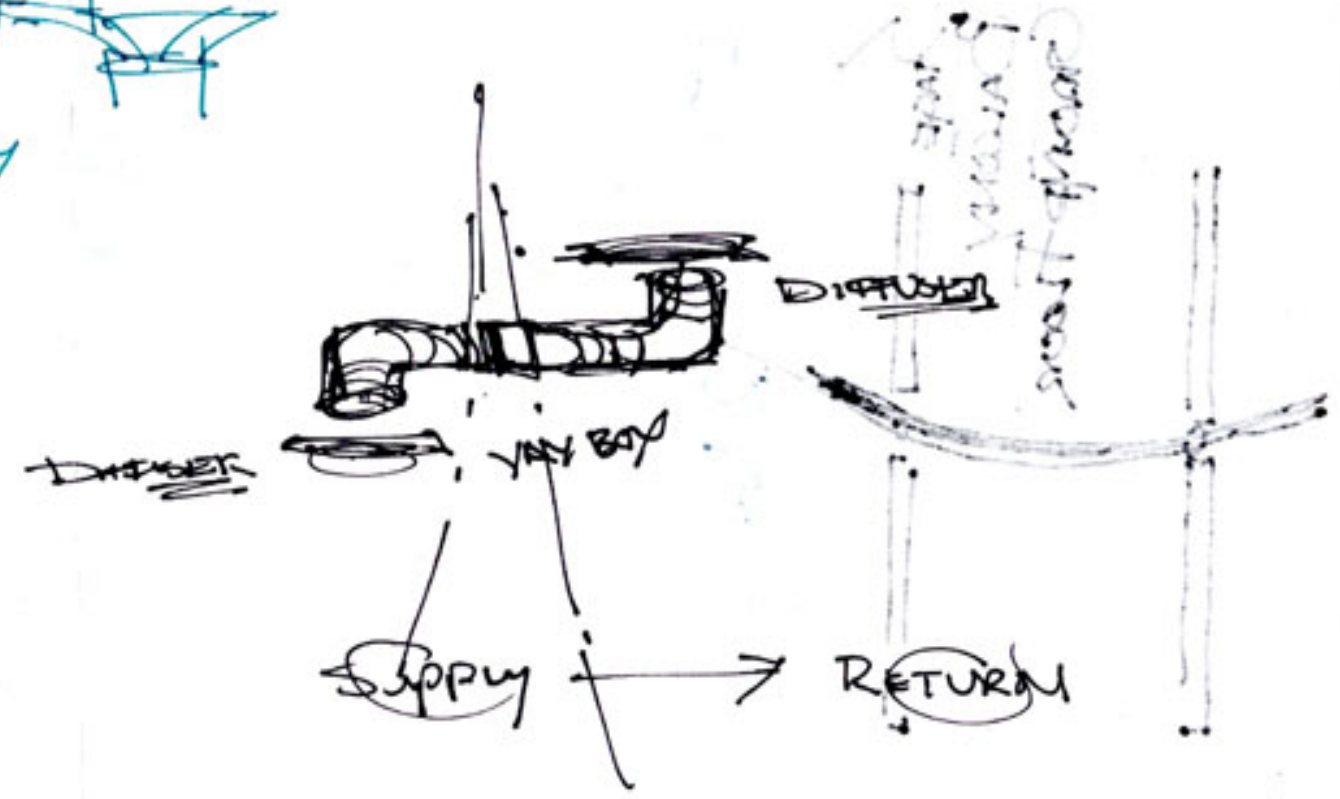
Air supply + return



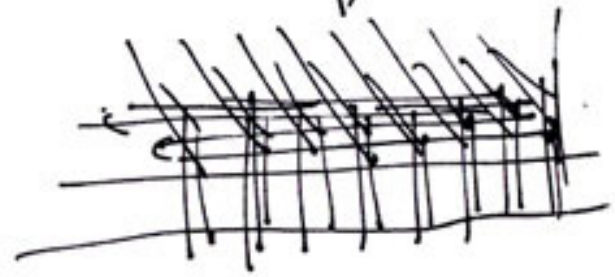
mm



Supply top Bottom



Level 4



Problem → solution



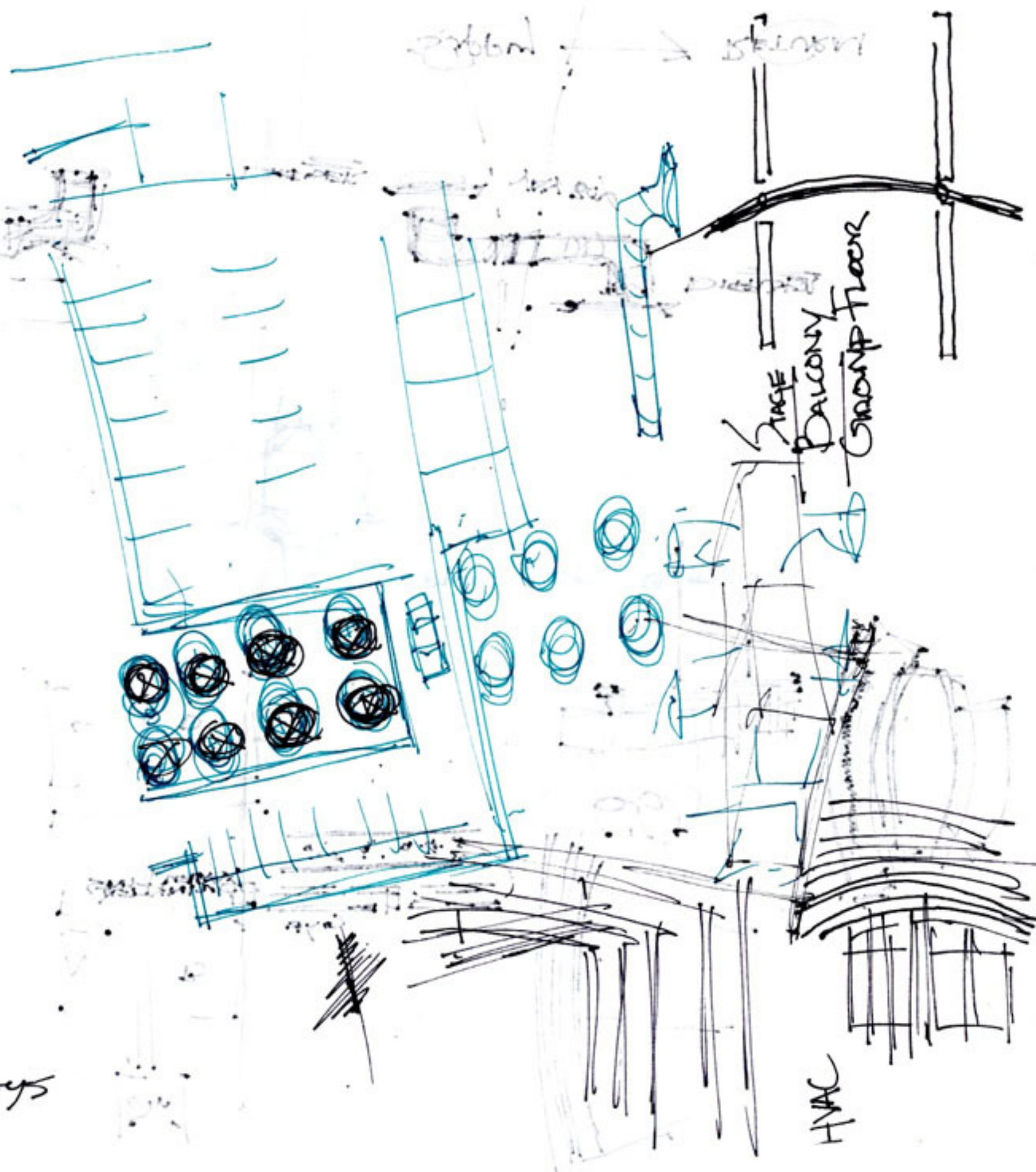
FINISH DETAILS

- SKY PANELS
- FLOOR PLAN
- HVAC
- CEILING LIGHTING
- CURTAIN PANELS
- GRIDS
- MULLIONS
- FACADES

MATERIALS
LAYERS

SECTION CUT

- SKY PANELS
- COLUMNS
- LIGHTS
- HVAC
- CABLE TRAYS



FACE
BALCONY
GROUND FLOOR

HVAC

PROBLEM STATEMENT

DYNAMIC → FLEXIBLE

KINETIC

ENERGY

SPACE

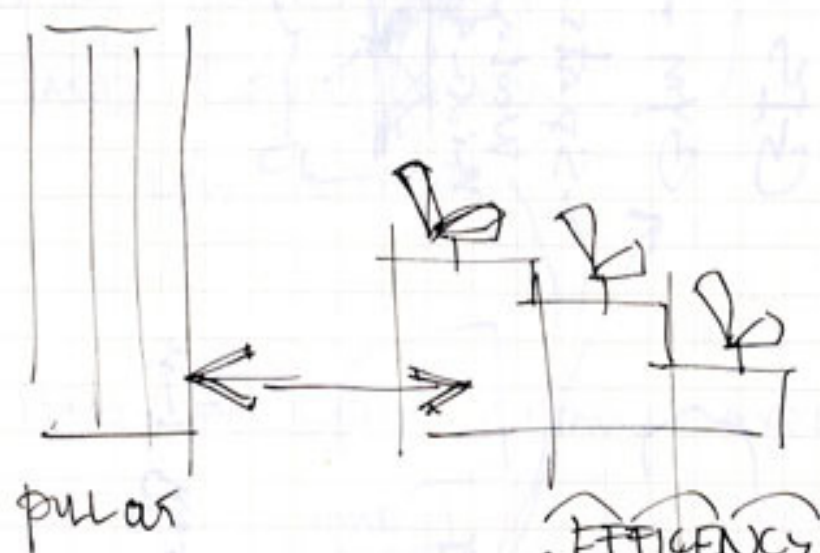
... TWO CONCEPTS ...
... SPACE ...
... + ENERGY ...
... ..

ANIMATE
ALIVE
MOTION

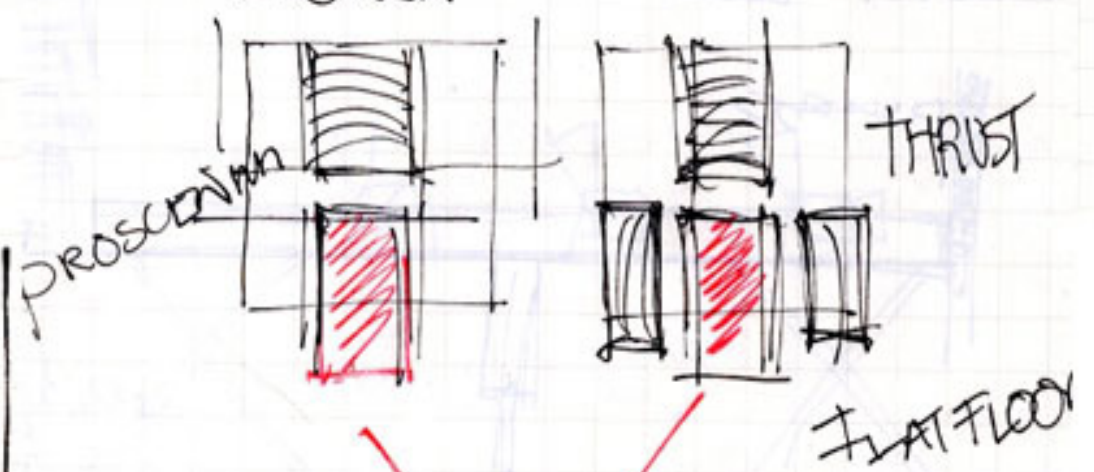
ENERGY OR FORCES THAT PRODUCE MOTION - AS OPPOSED TO STATIC

CHARACTERIZED BY CONTINUOUS CHANGE OR ACTIVITY

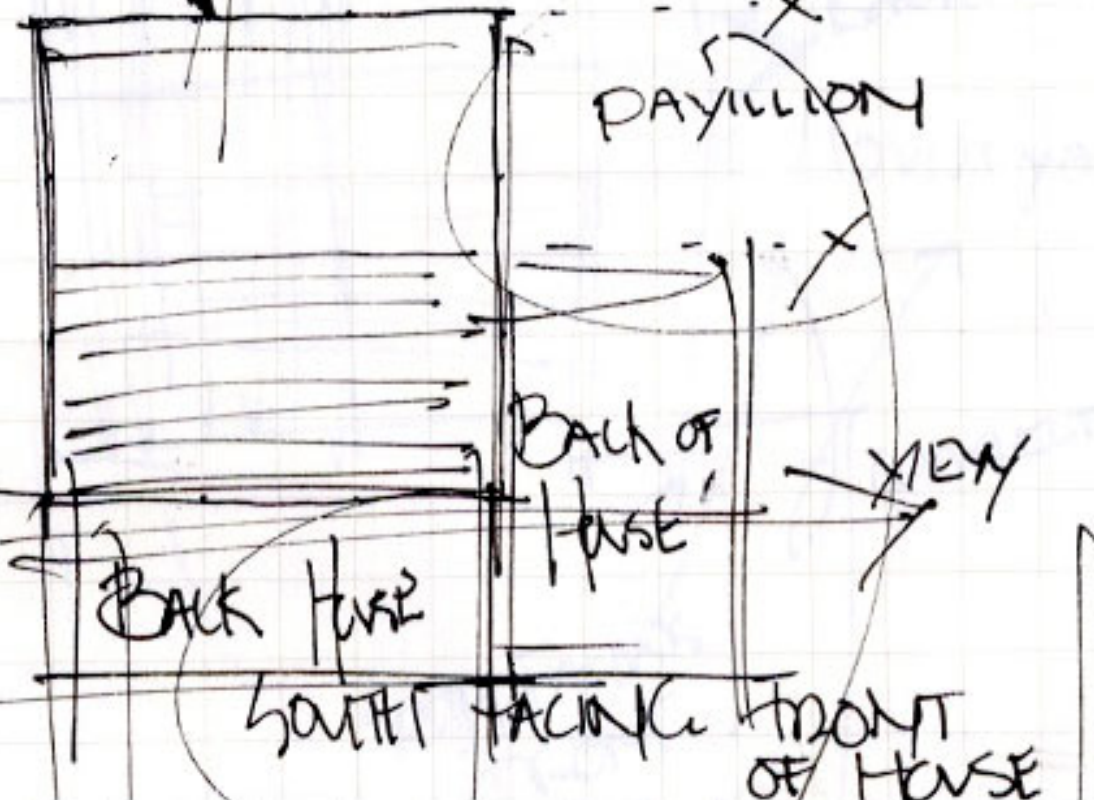
SEATING FLEXIBLE



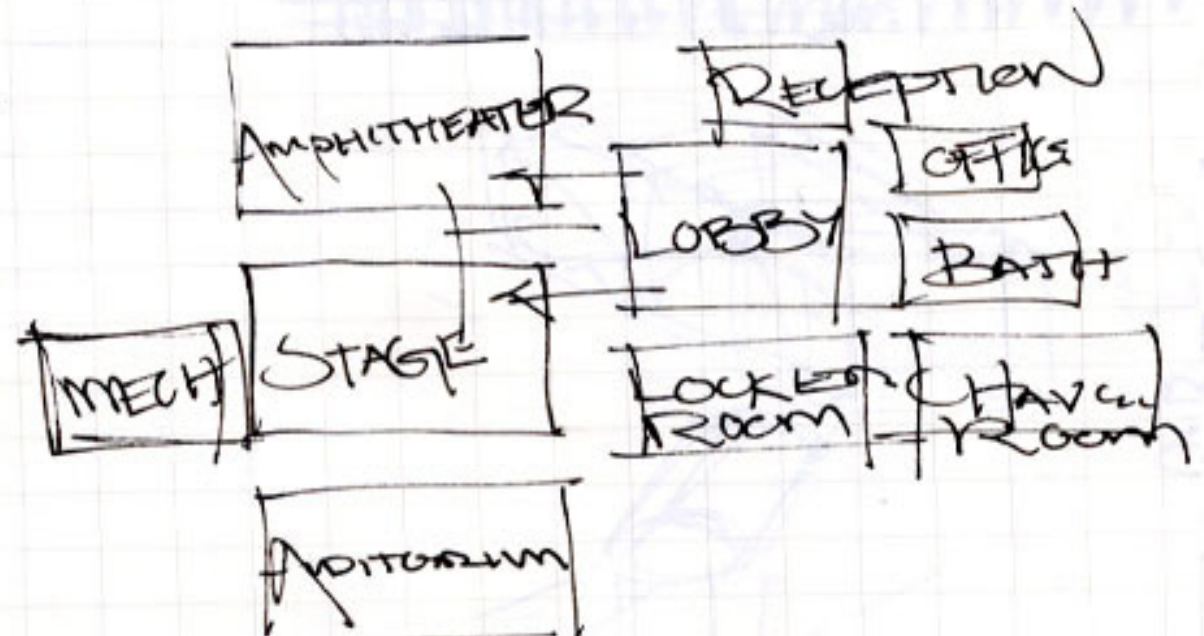
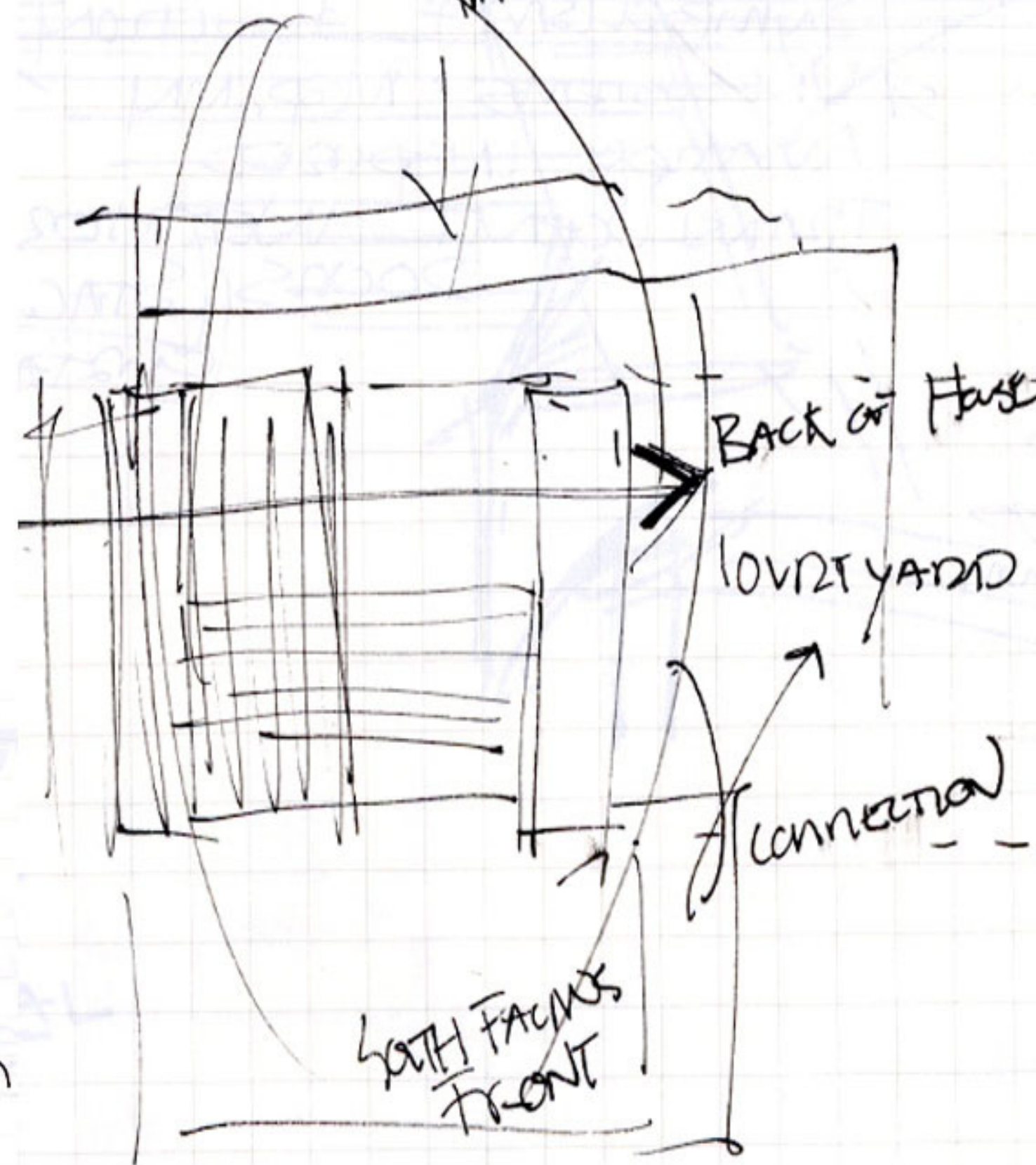
BILUMER

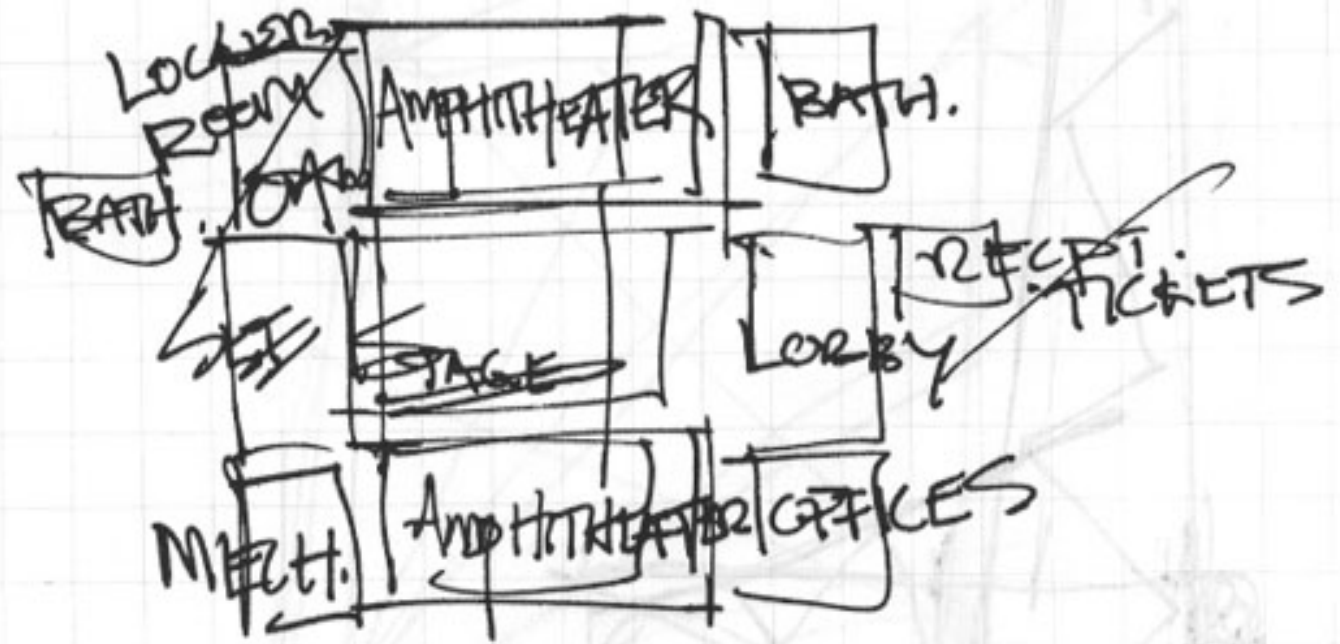
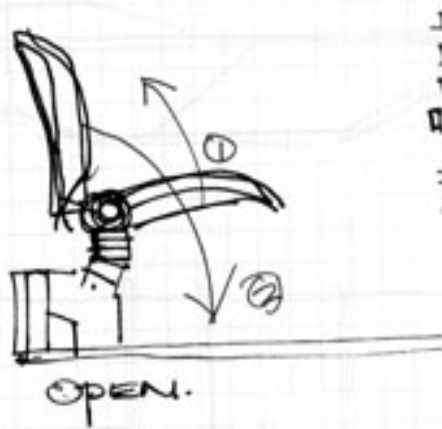
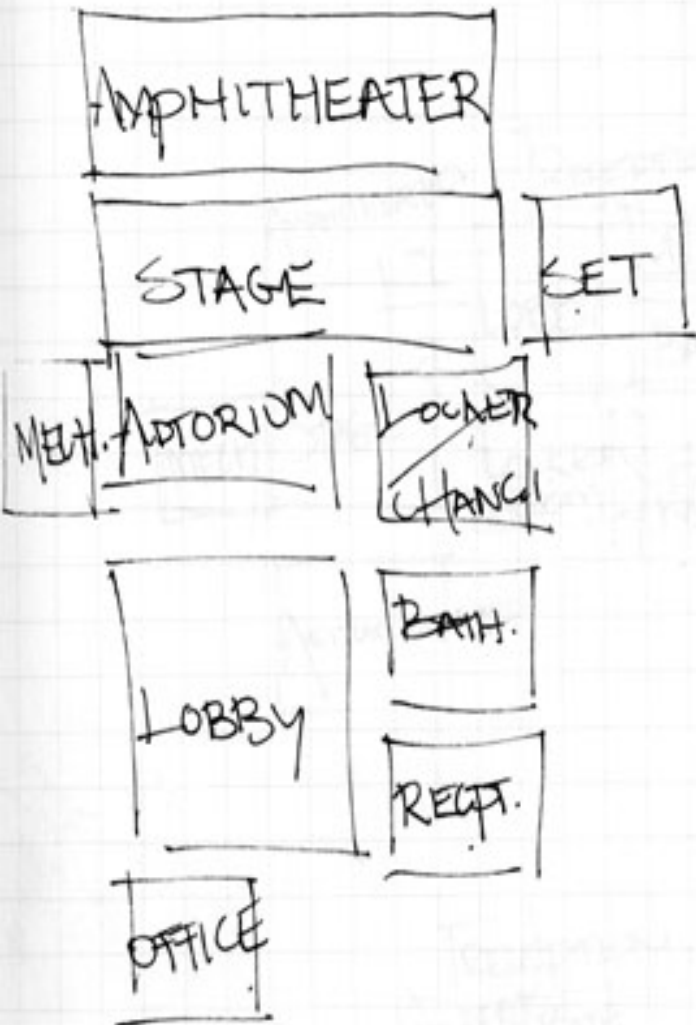
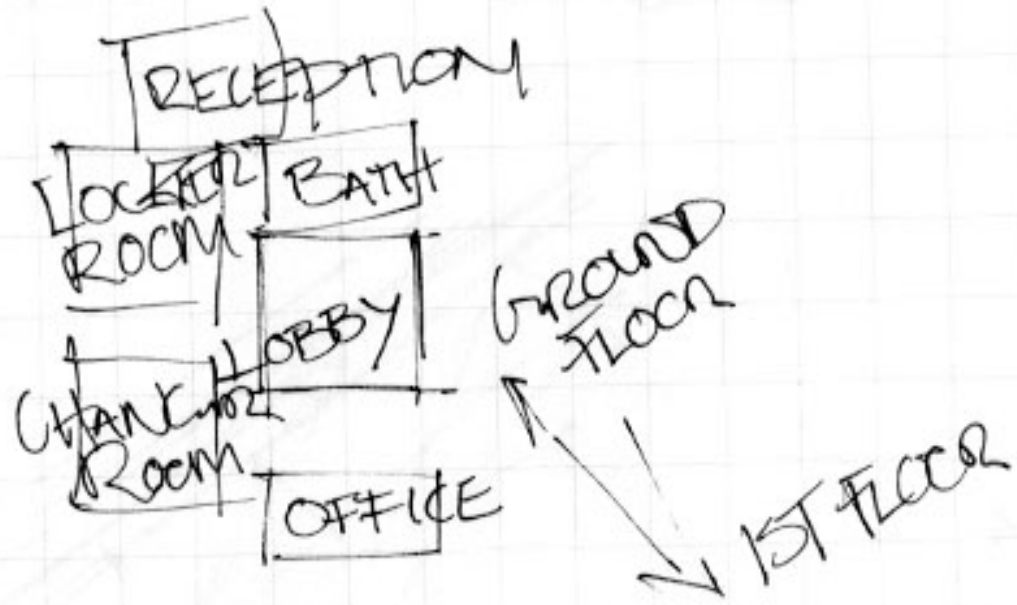


VIEW
INSIDE

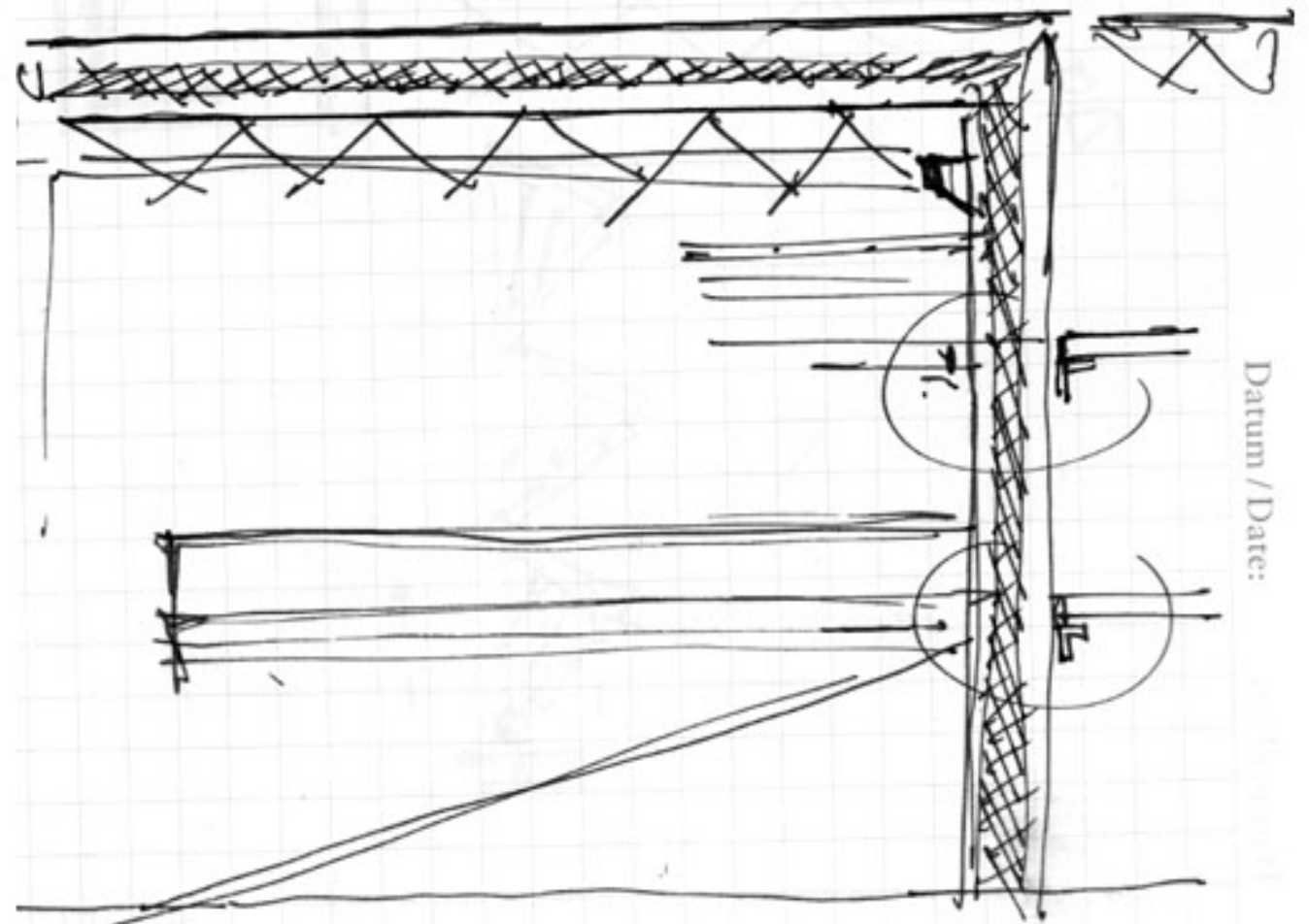


INSIDE VIEW
PARTIAL

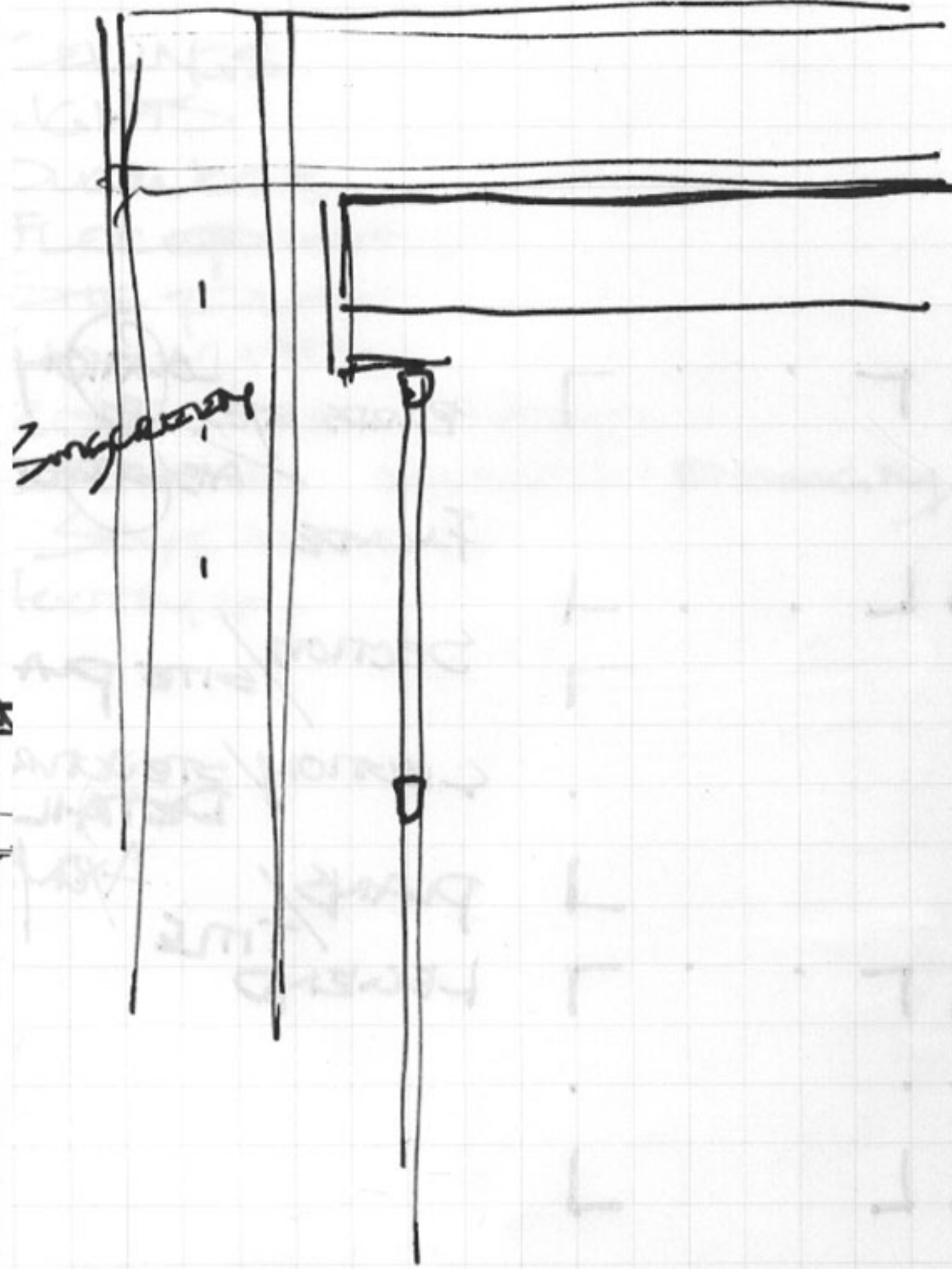
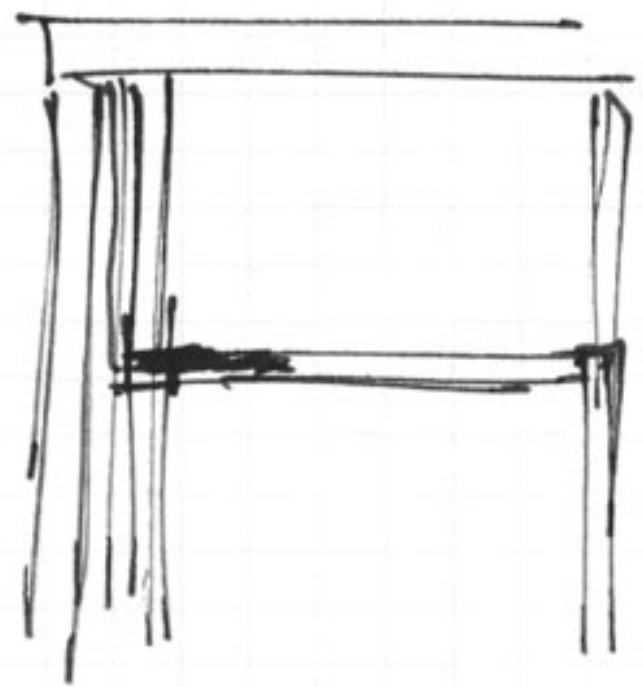
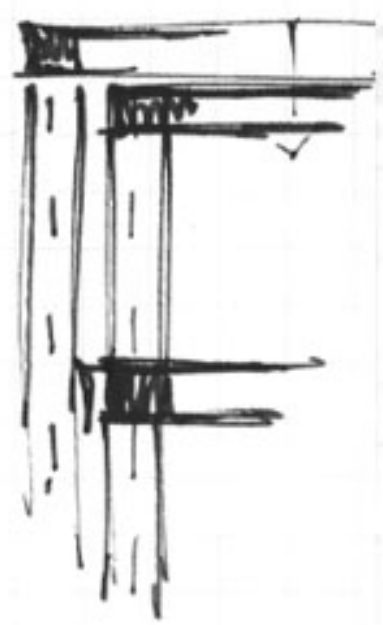
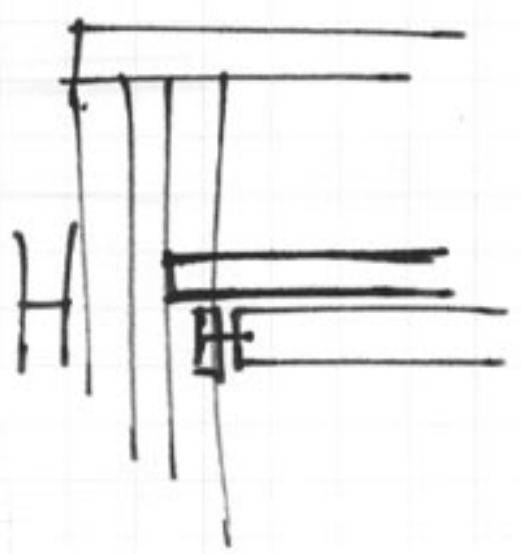
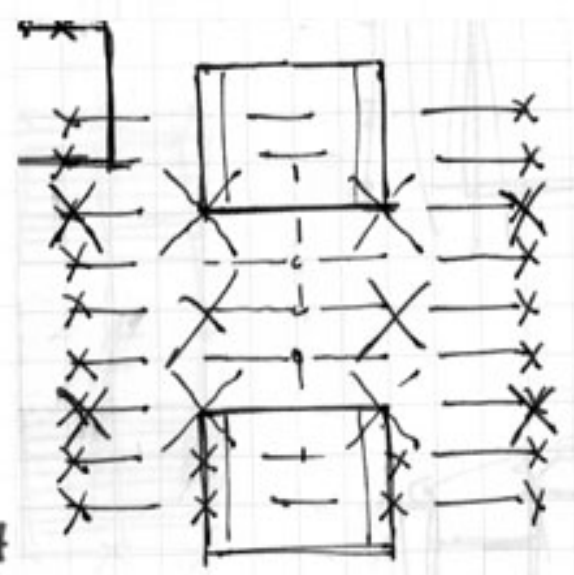
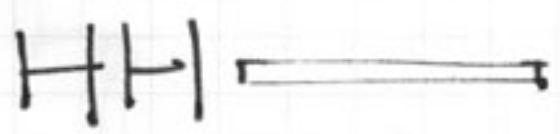


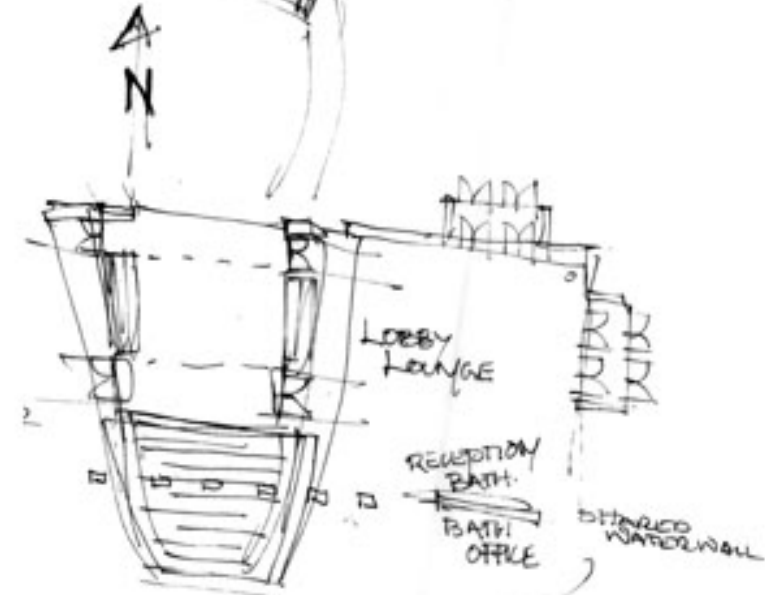
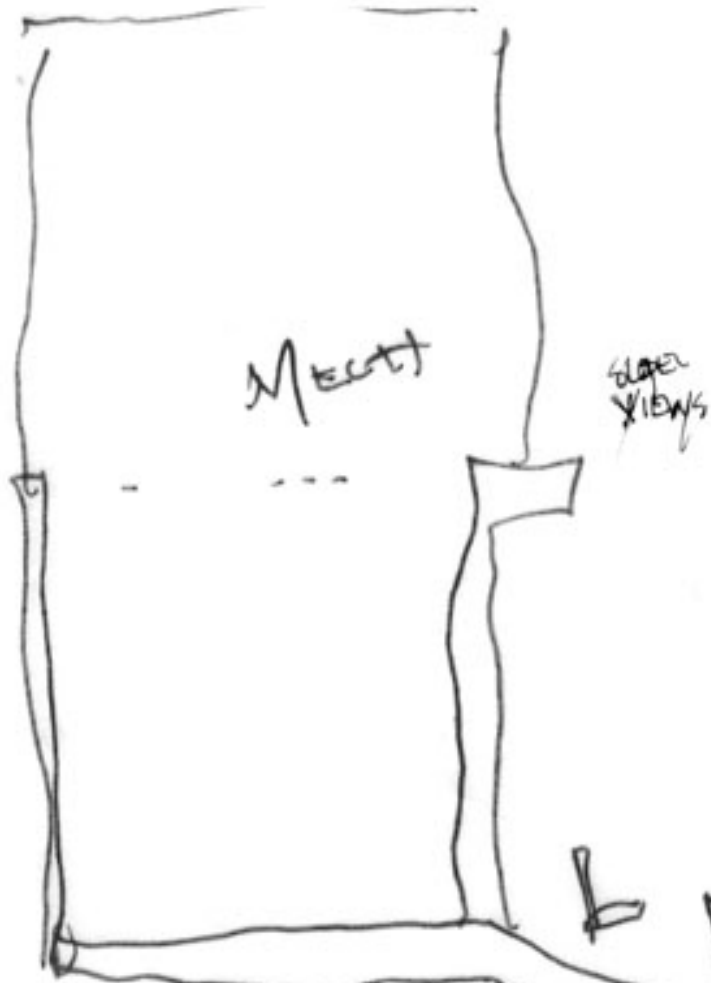
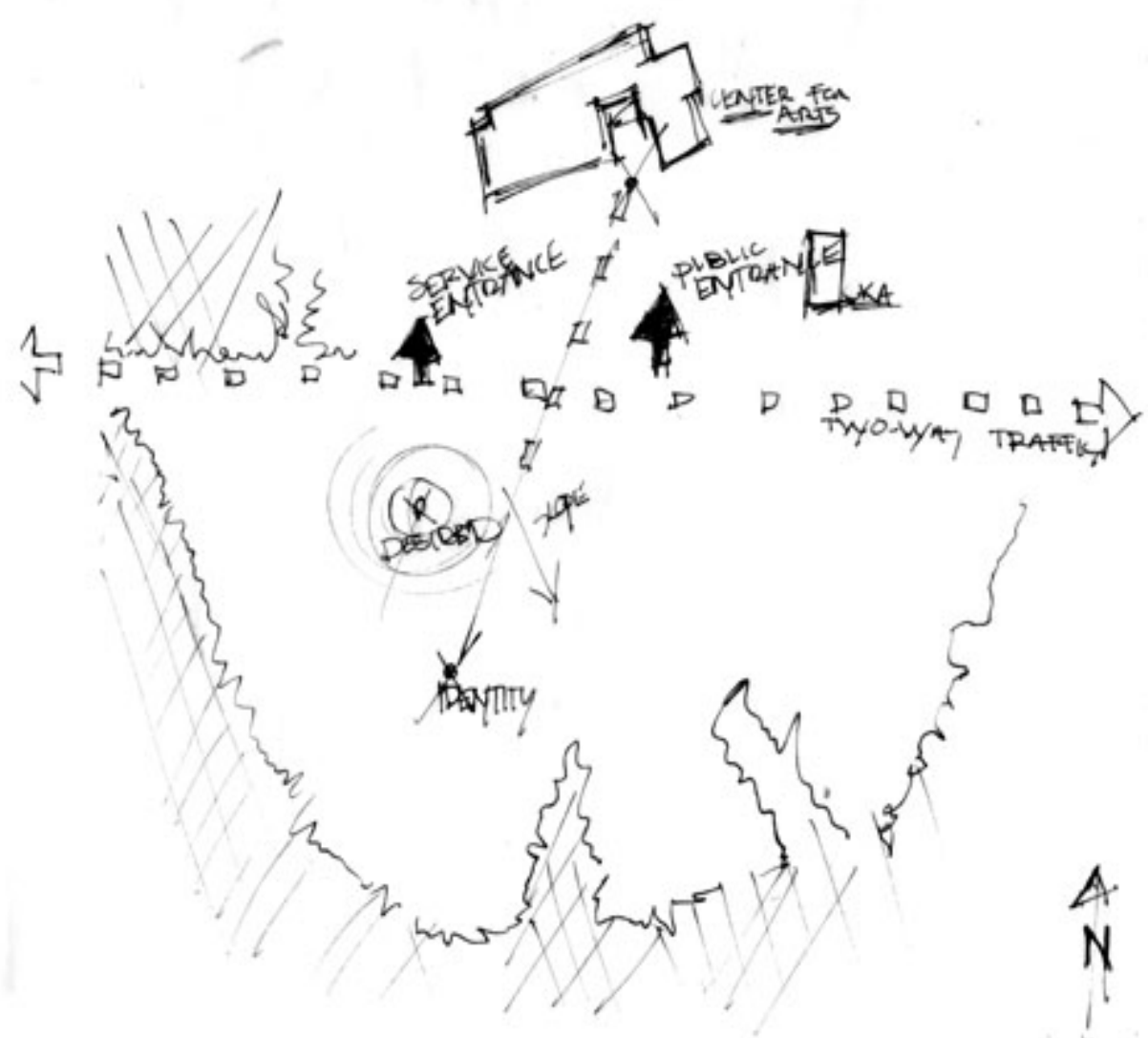


ONEWAY
 TOWARDY: ↓



Datum / Date:





UNFOLD/TRANSFORM

How DOES THE EXPERIENCE
OF THE ARCHITECTURE
CONTRIBUTE TO THE
FORM IT WILL
TAKE

FACULTY
ENTRANCES