

What is the craft of the architect today as opposed to the craft of the master builder prior to the industrial period?

Eadweard Muybridge- Photography

How can biological regeneration influence design? Animal Locomotion

Introduction to Site-Running

Archive to Business Model Incubator

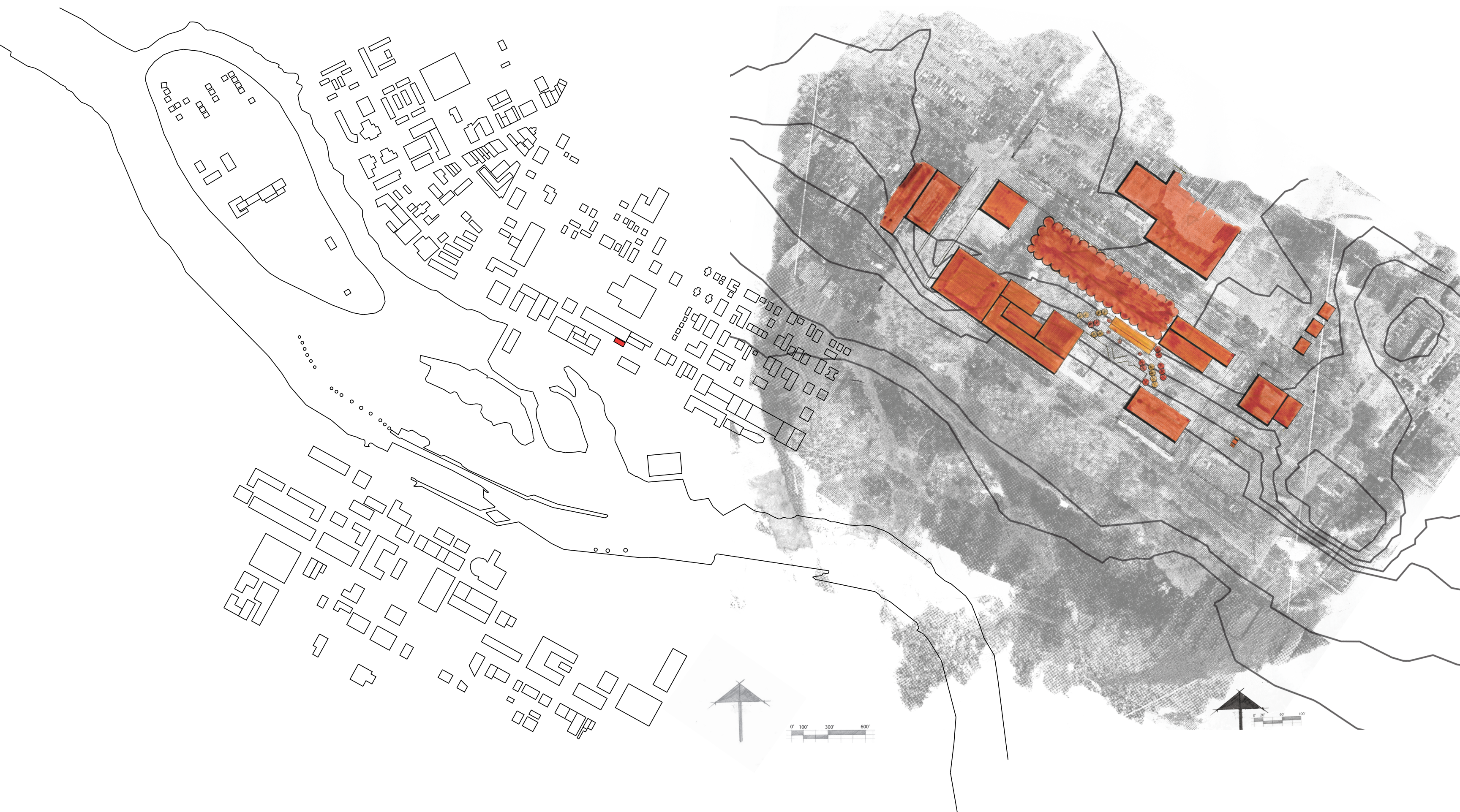
How is a built structure perceived overtime?

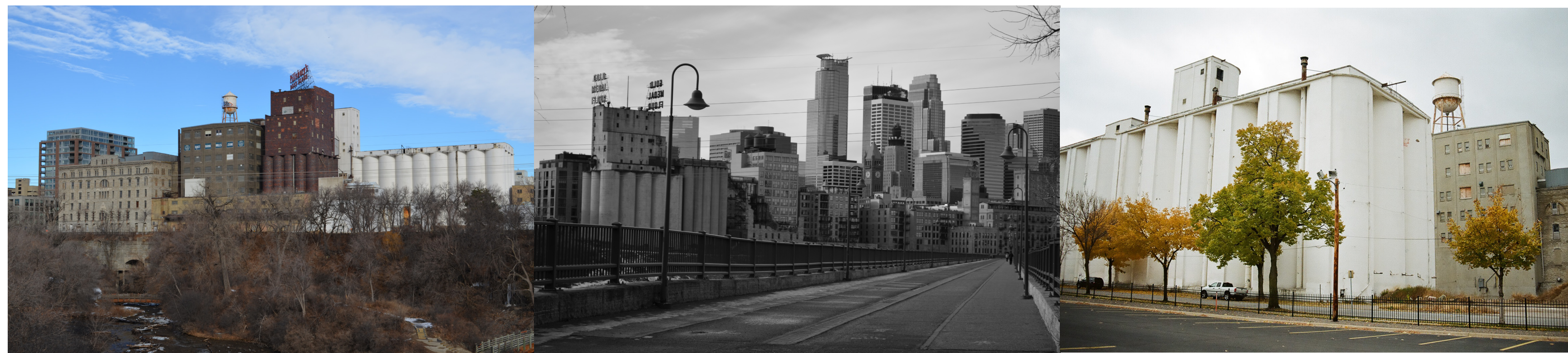
Industrial Photography Assignment-Potential of the Site

The Soap Factory

How does the use of photography change the perception of a structure?

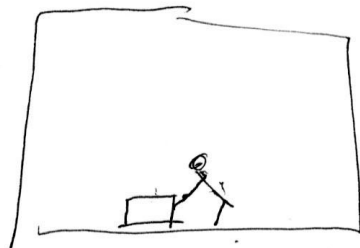
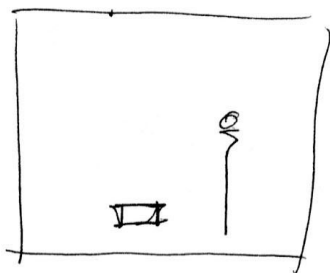
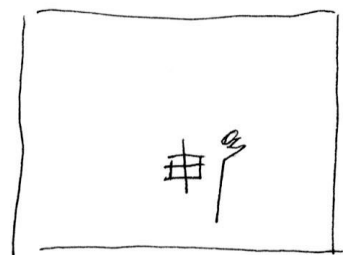
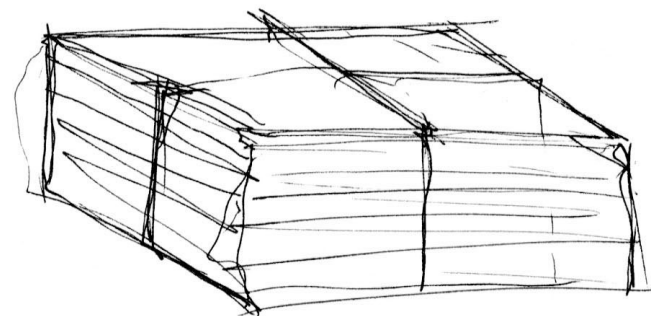
How can the use of photography influence our design process?







First Pin-Up

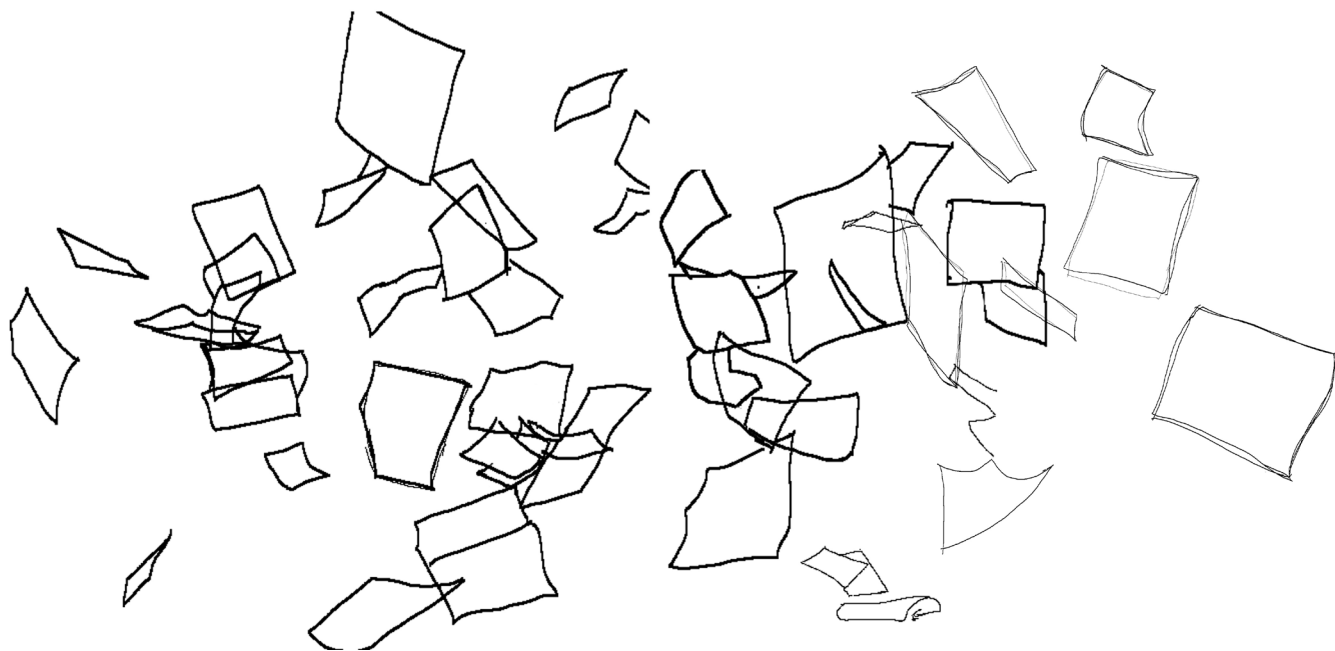


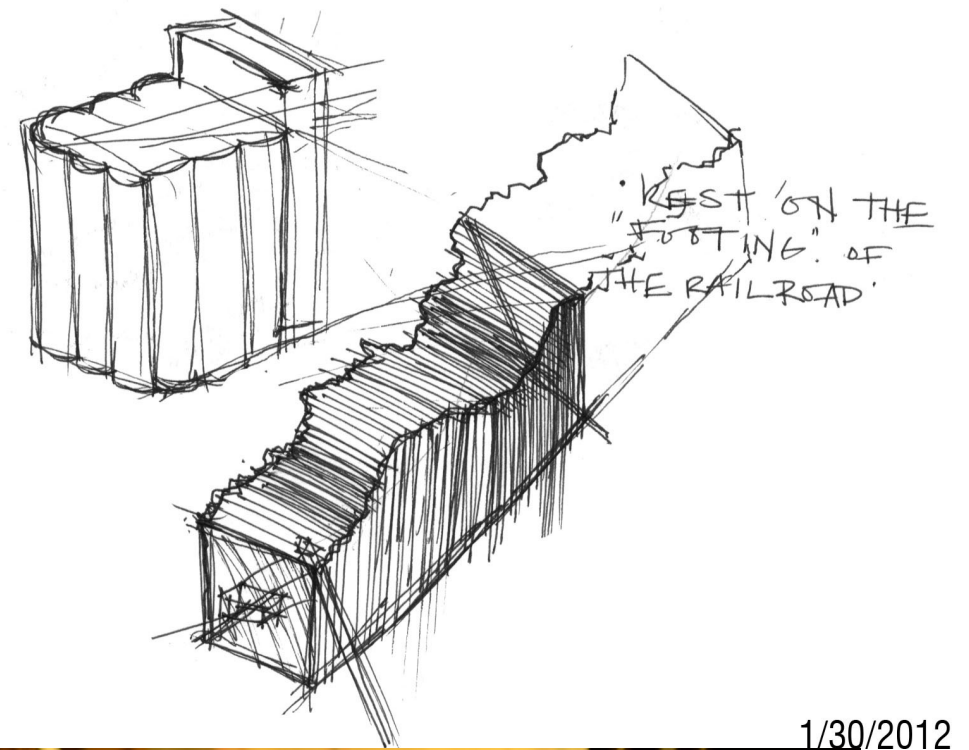
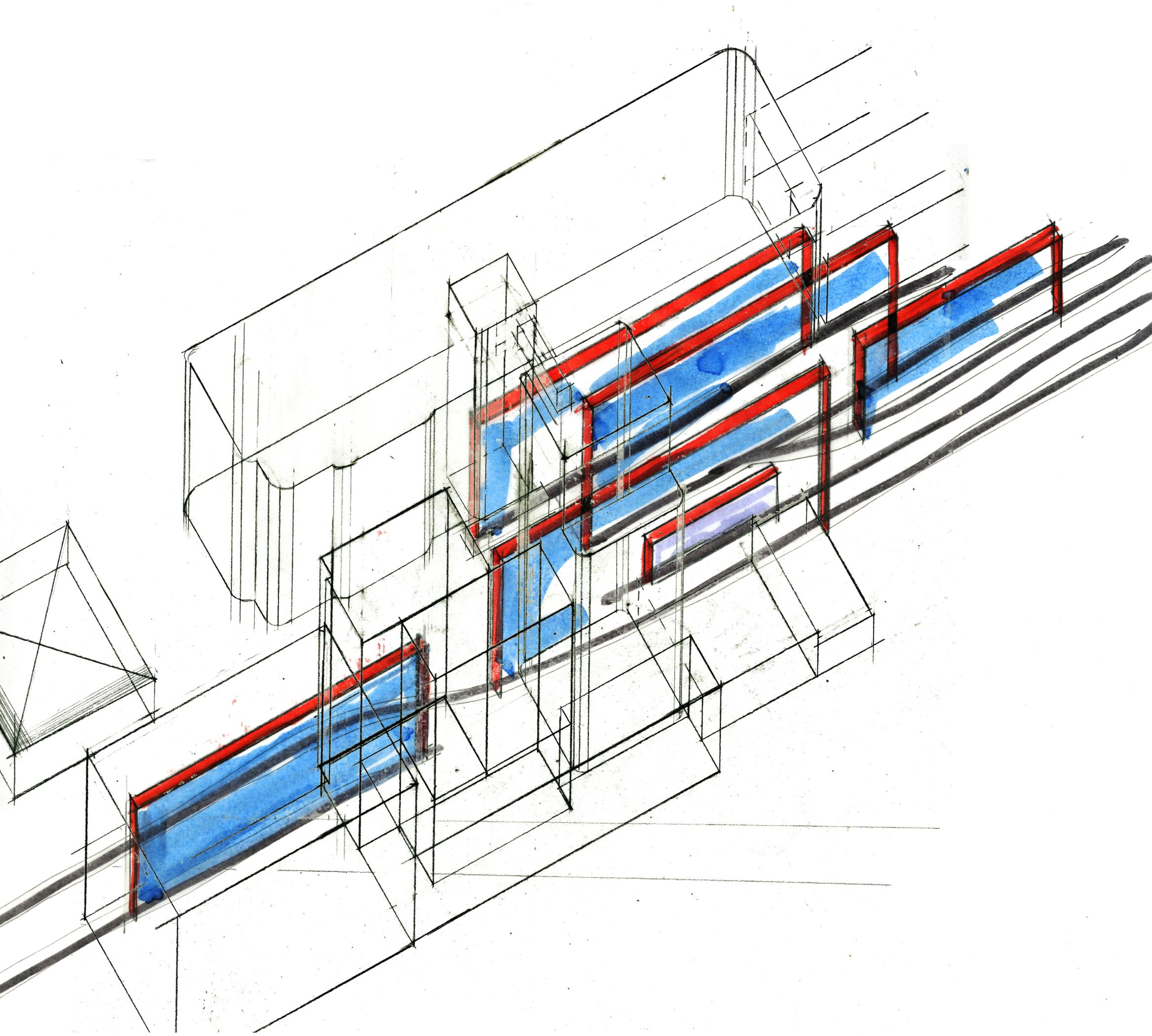
2/25/2012



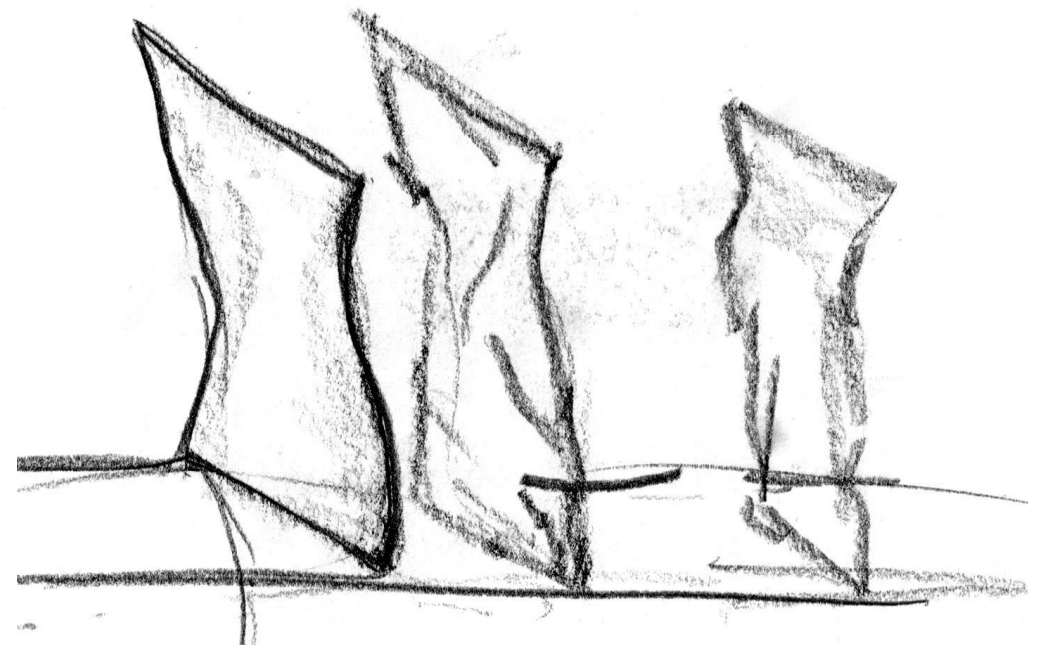
Explore the changing ways in which we see nature.

2/23/2012

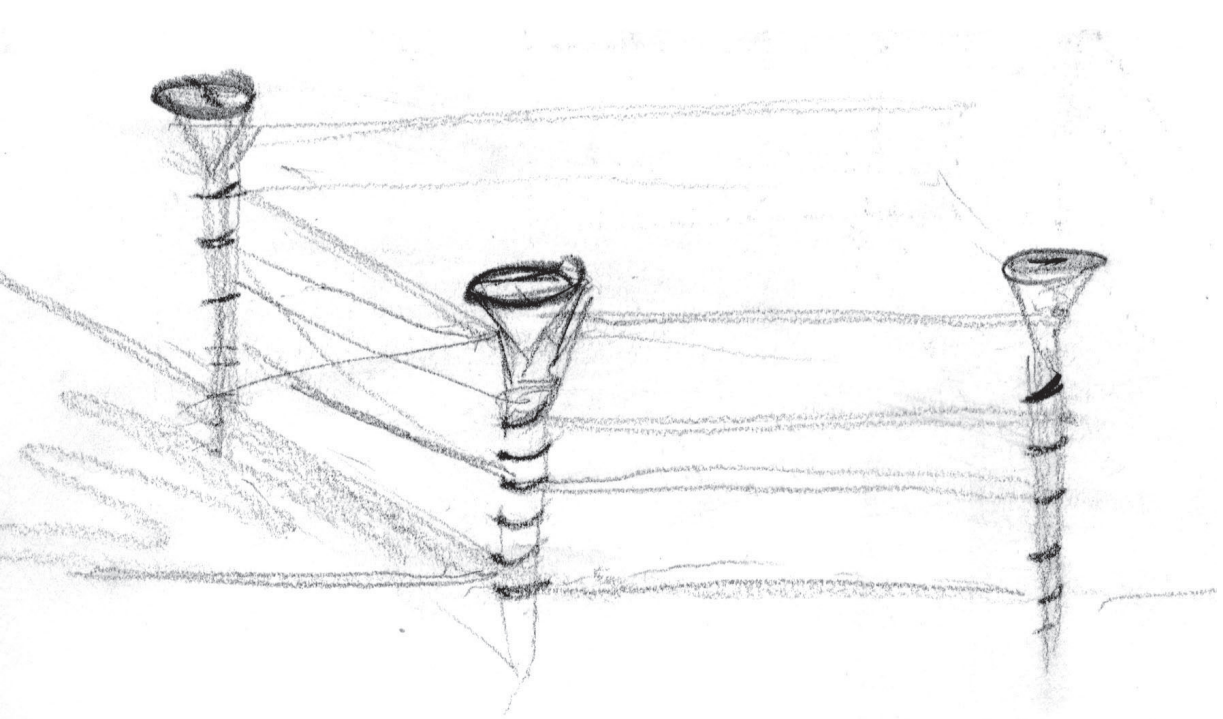




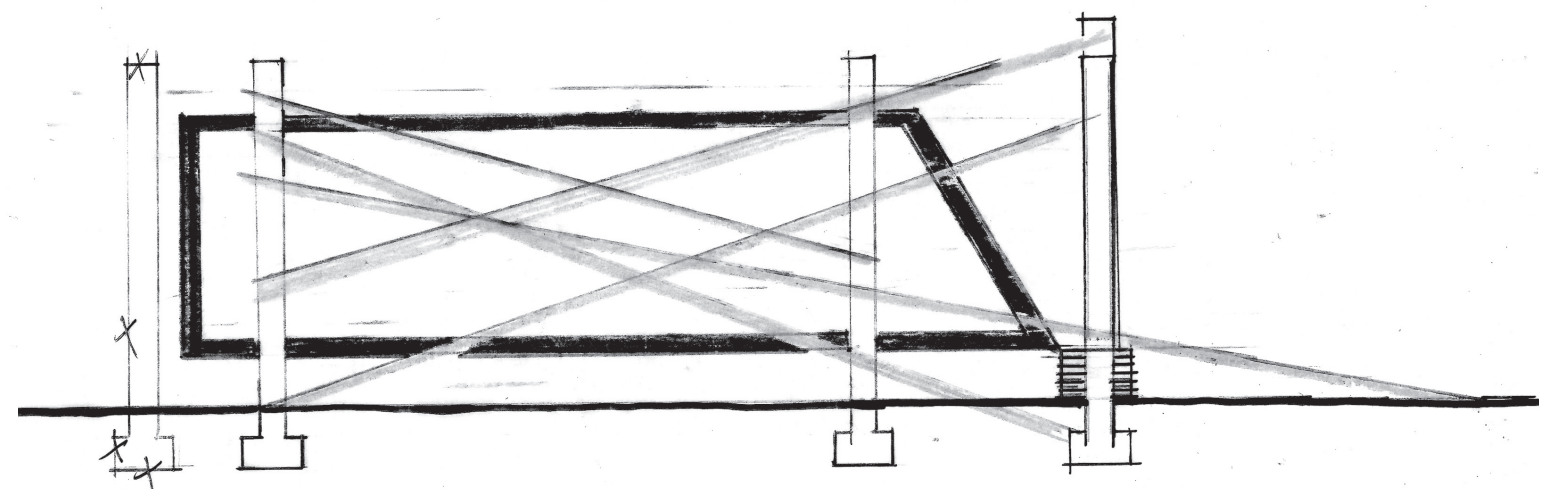
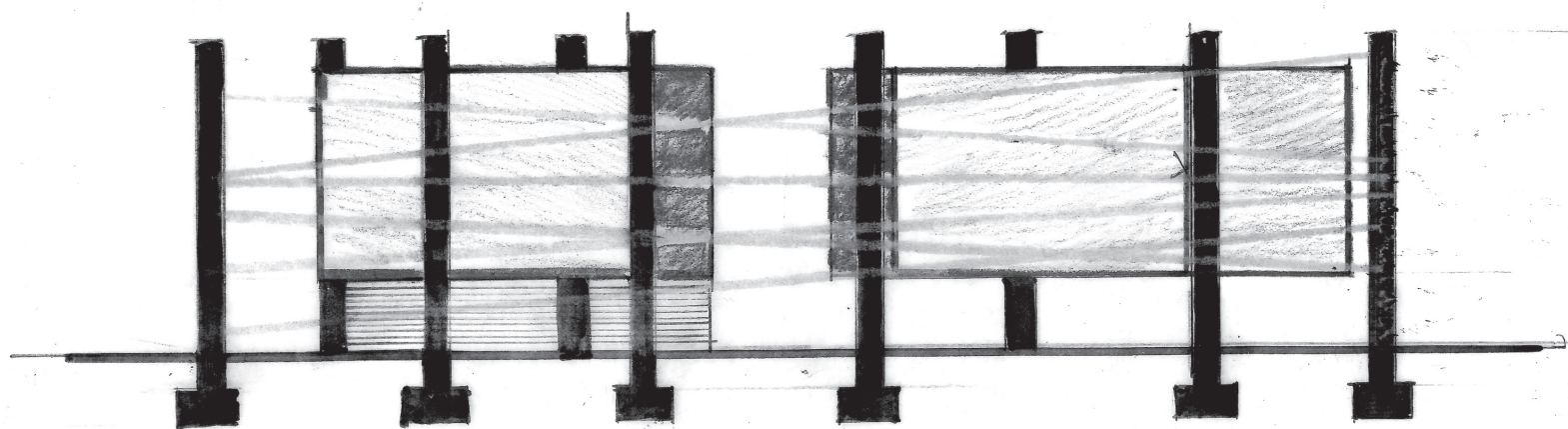
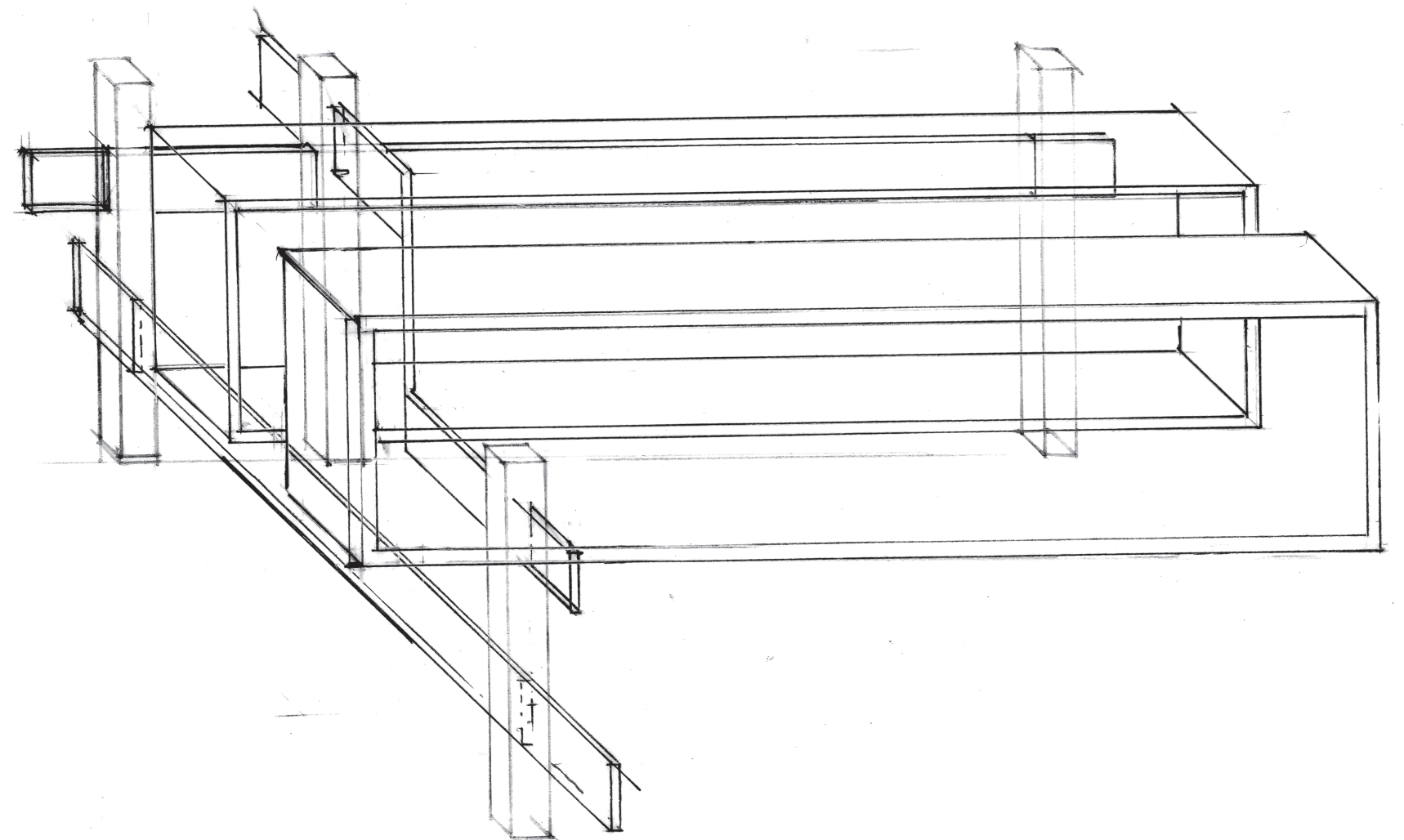
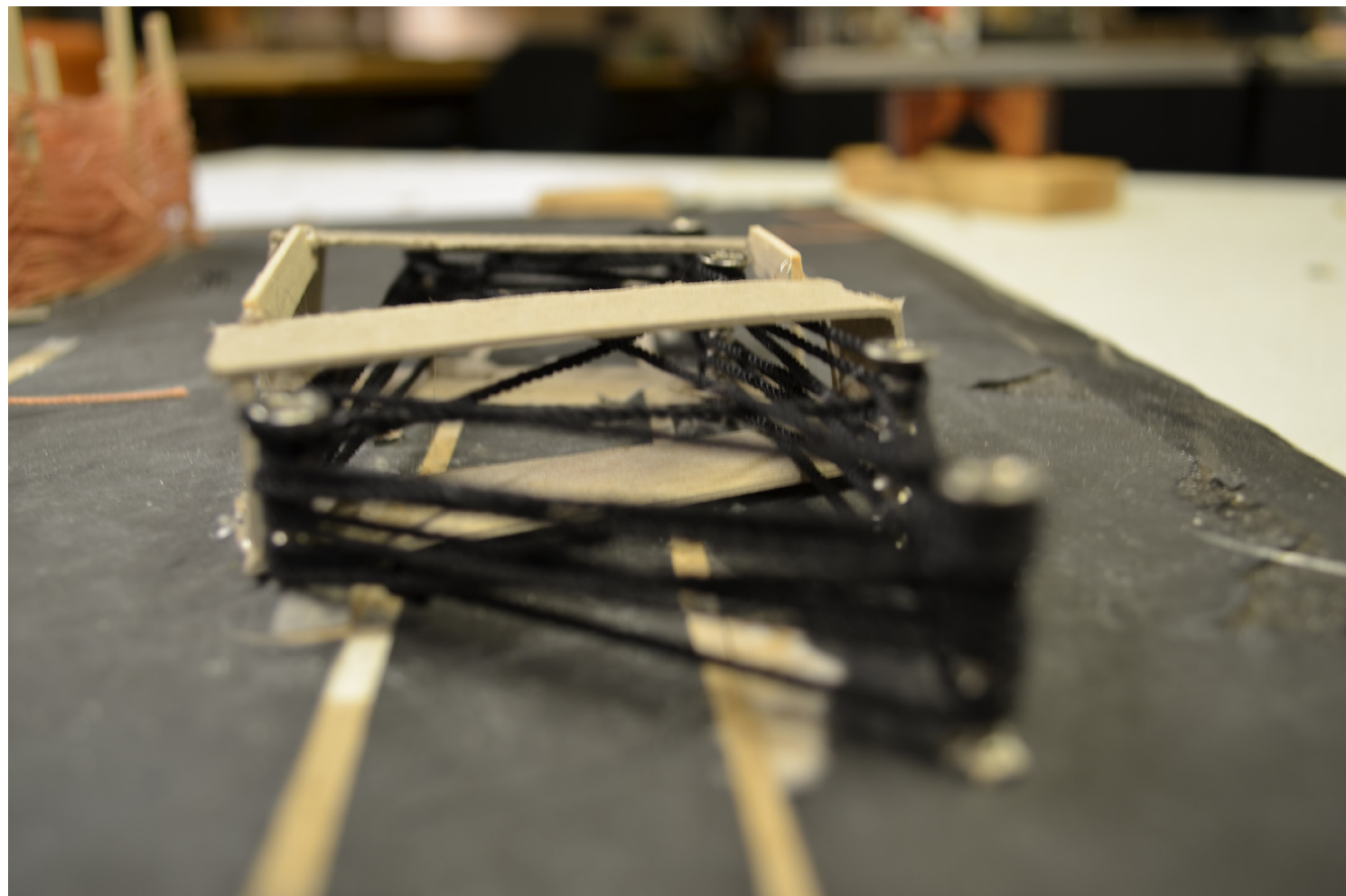
1/30/2012

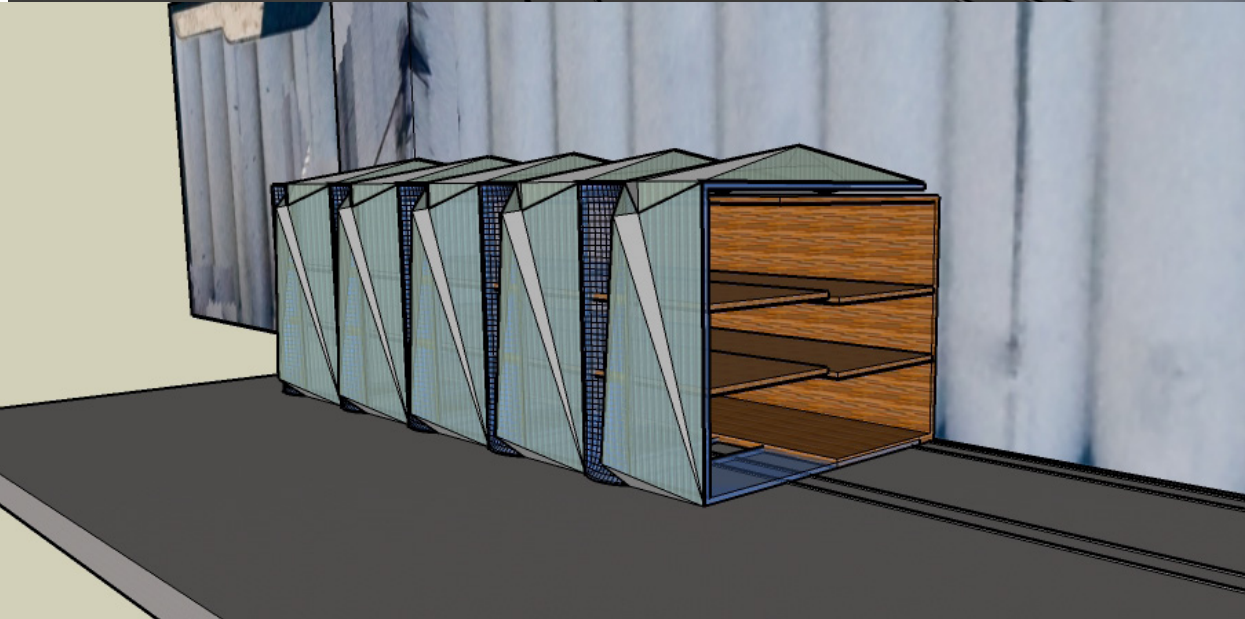
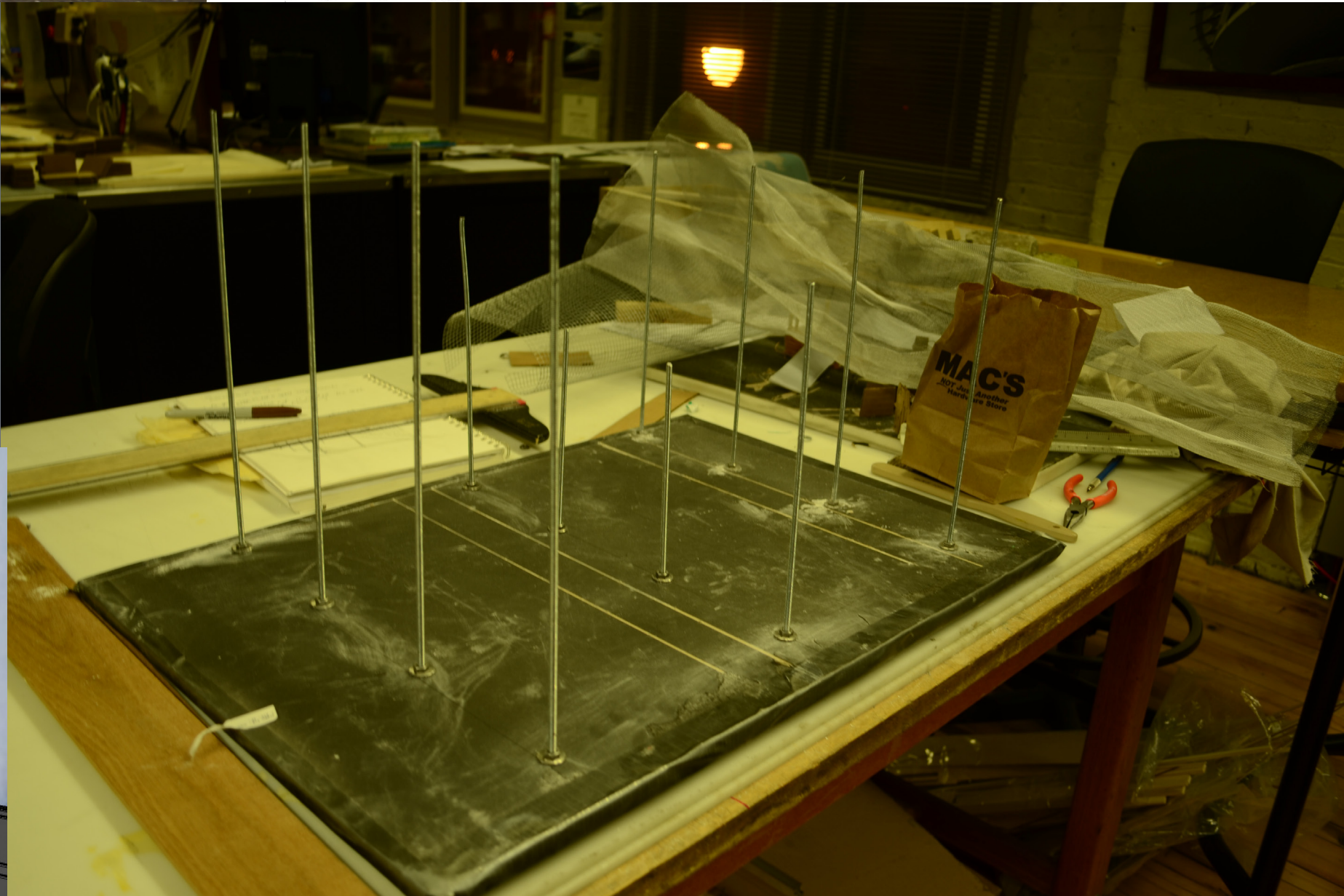
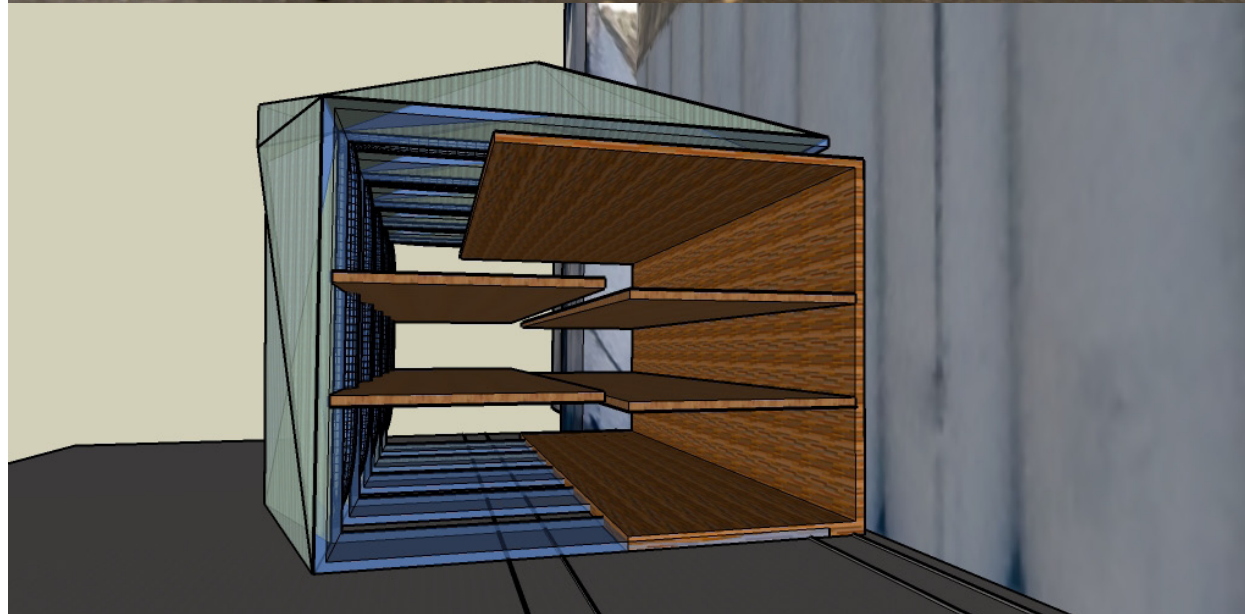
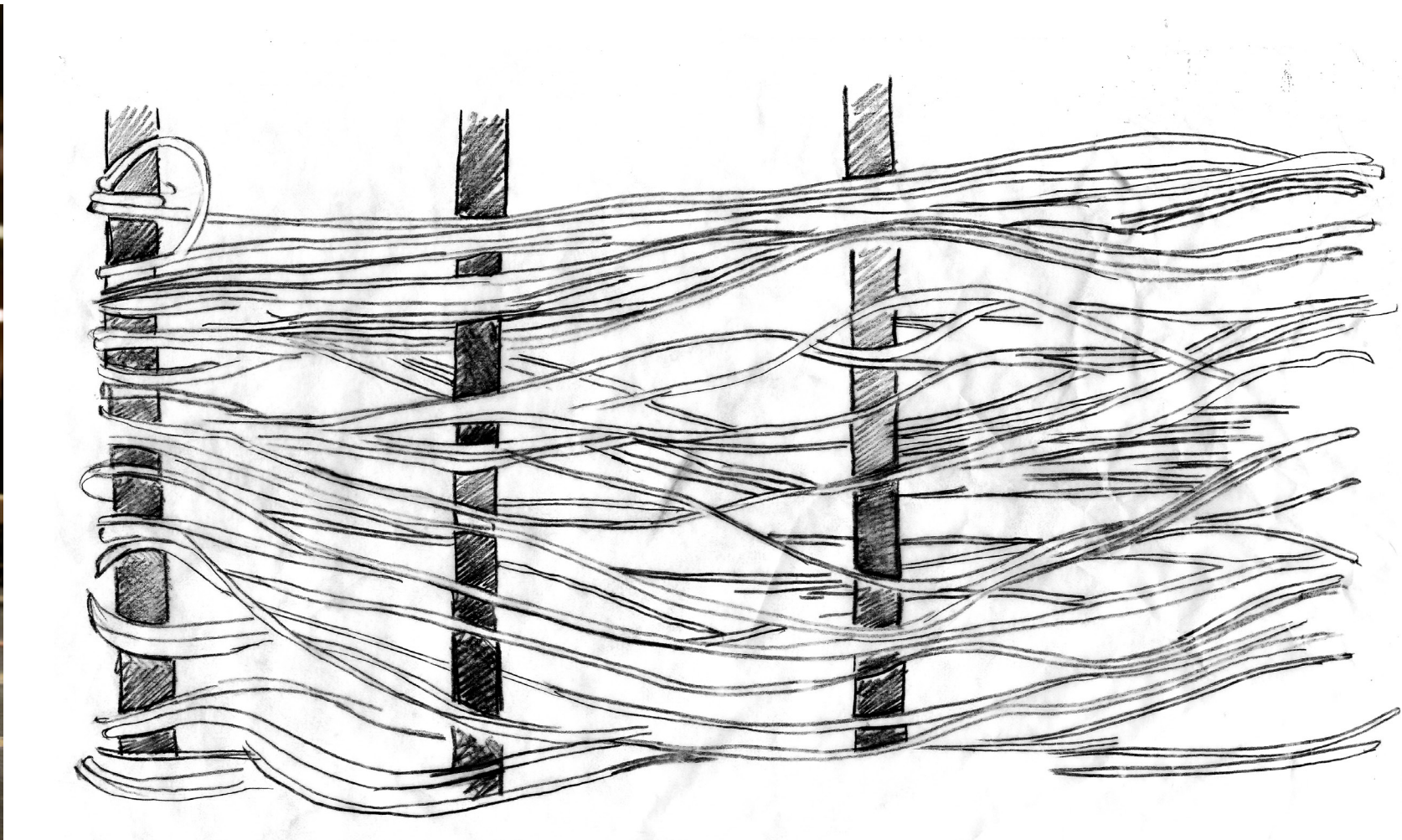


2/06/2012

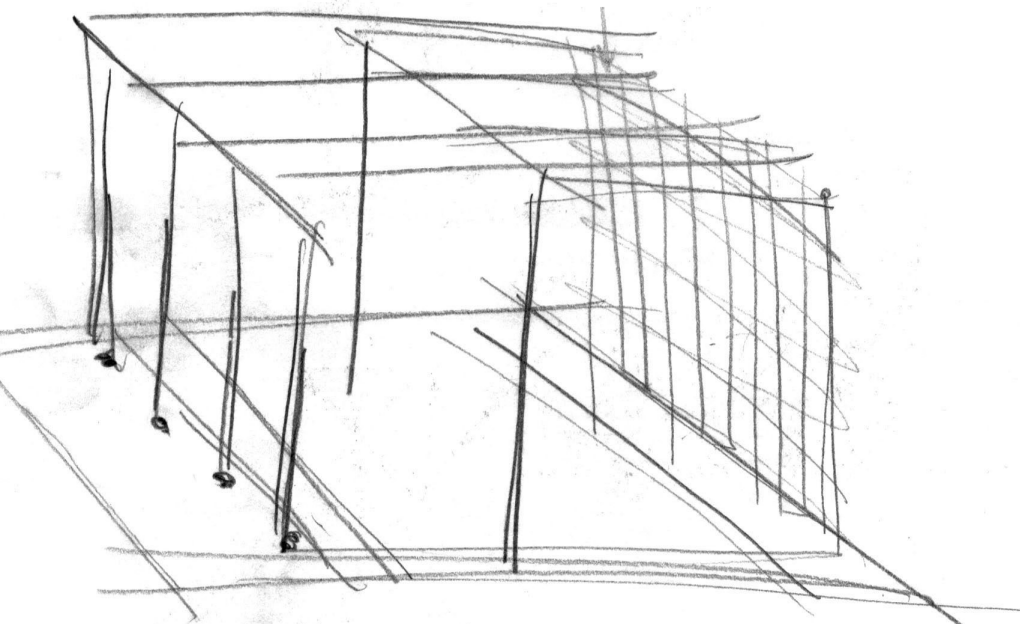


2/06/2012

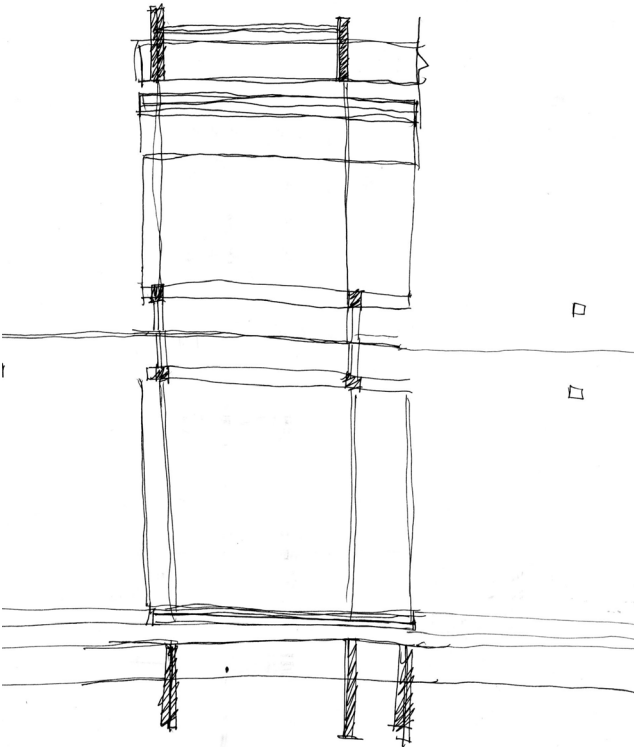




Mid-term

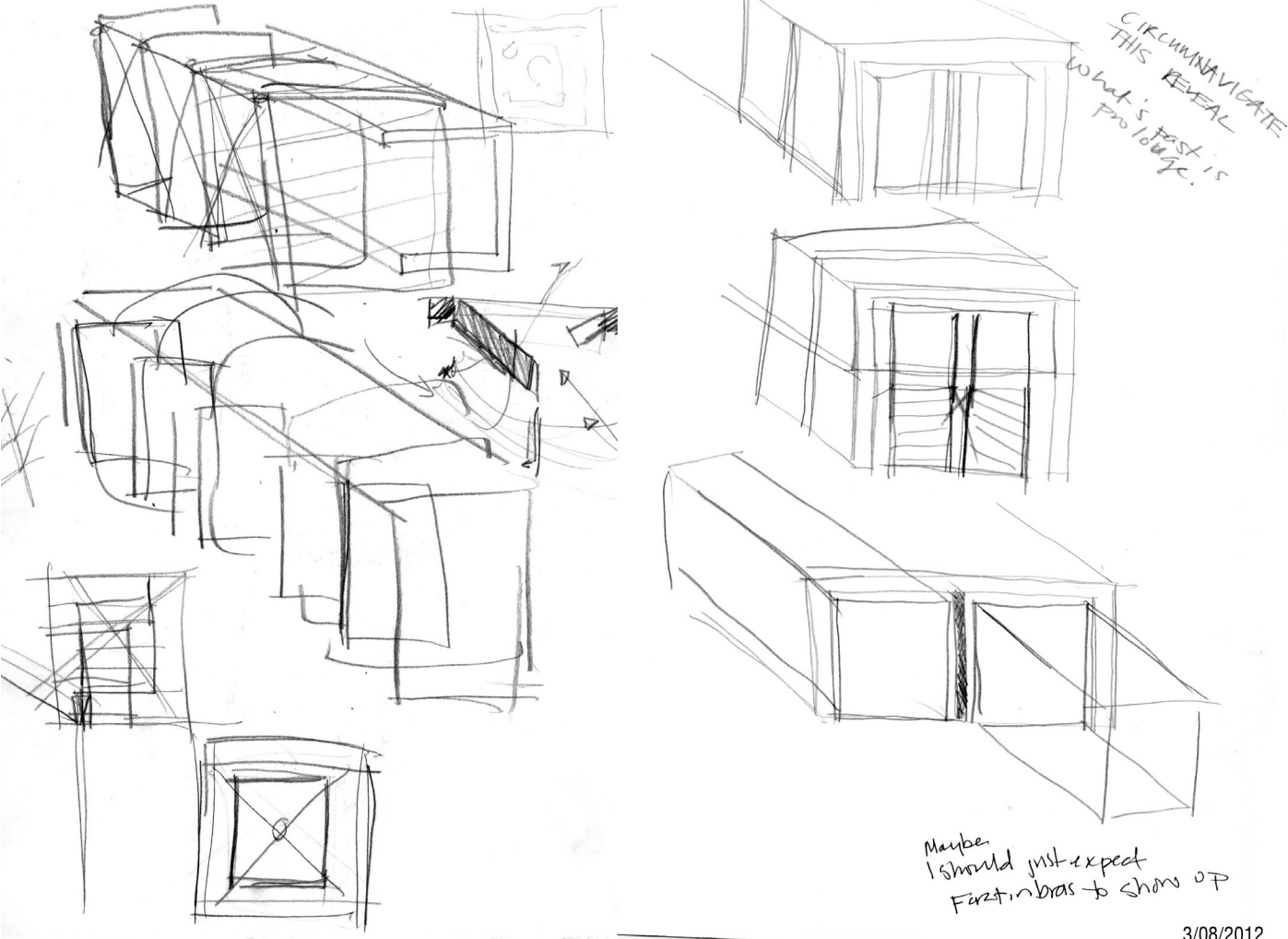


2/15/2012



No, madam I know not seems.

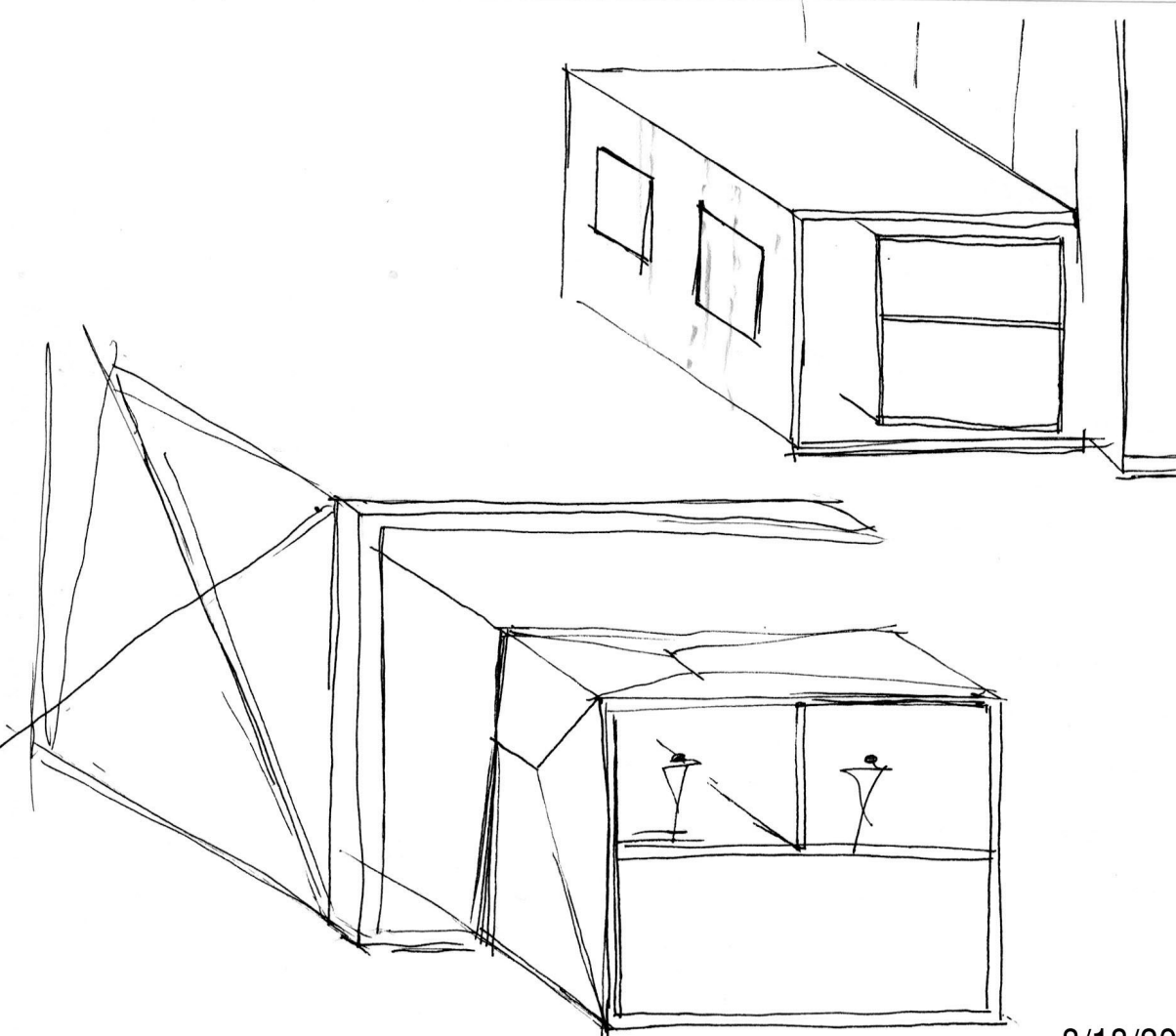
03/09/2012



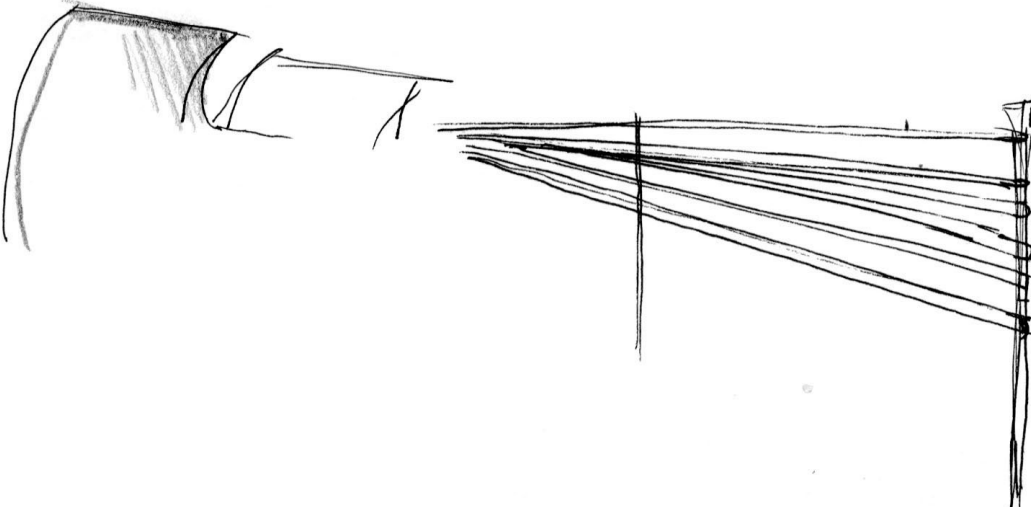
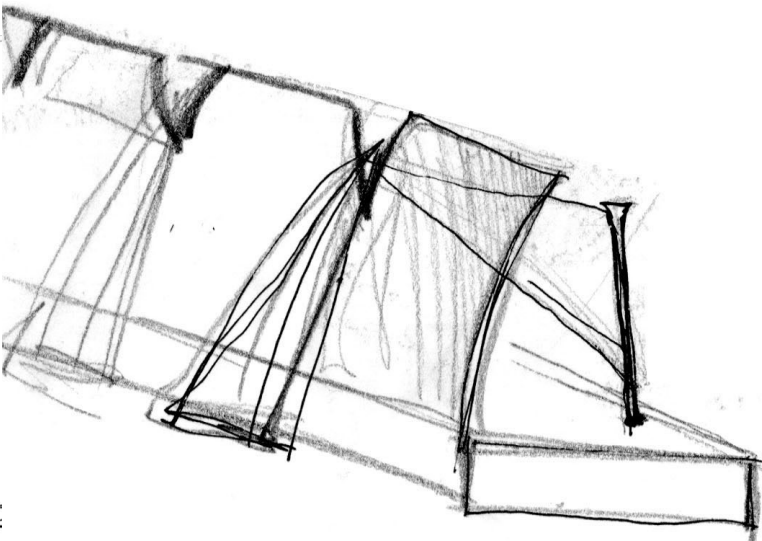
CIRCUMNAVIGATE
THIS REVEAL
WHAT'S TEST IS
PROLOGUE.

Maybe
I should just expect
First in bras to show up

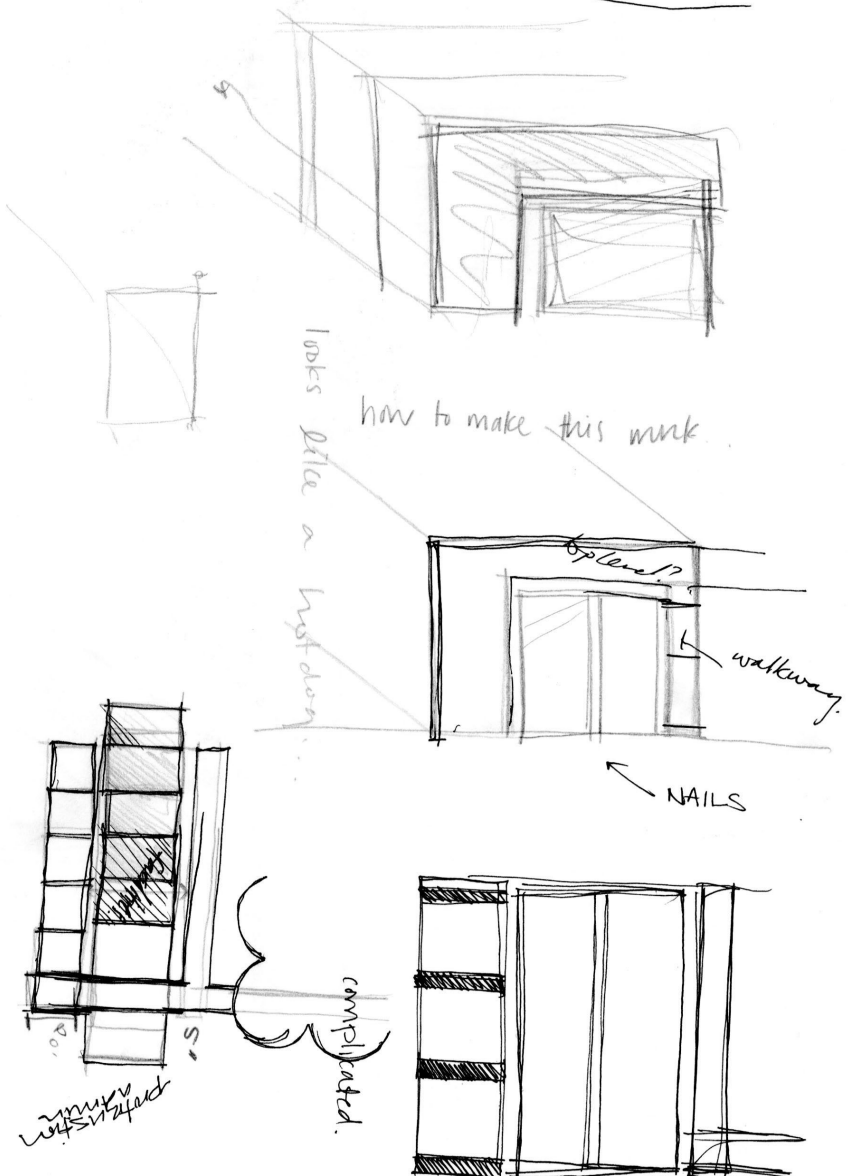
3/08/2012



3/18/20



2/25/2012



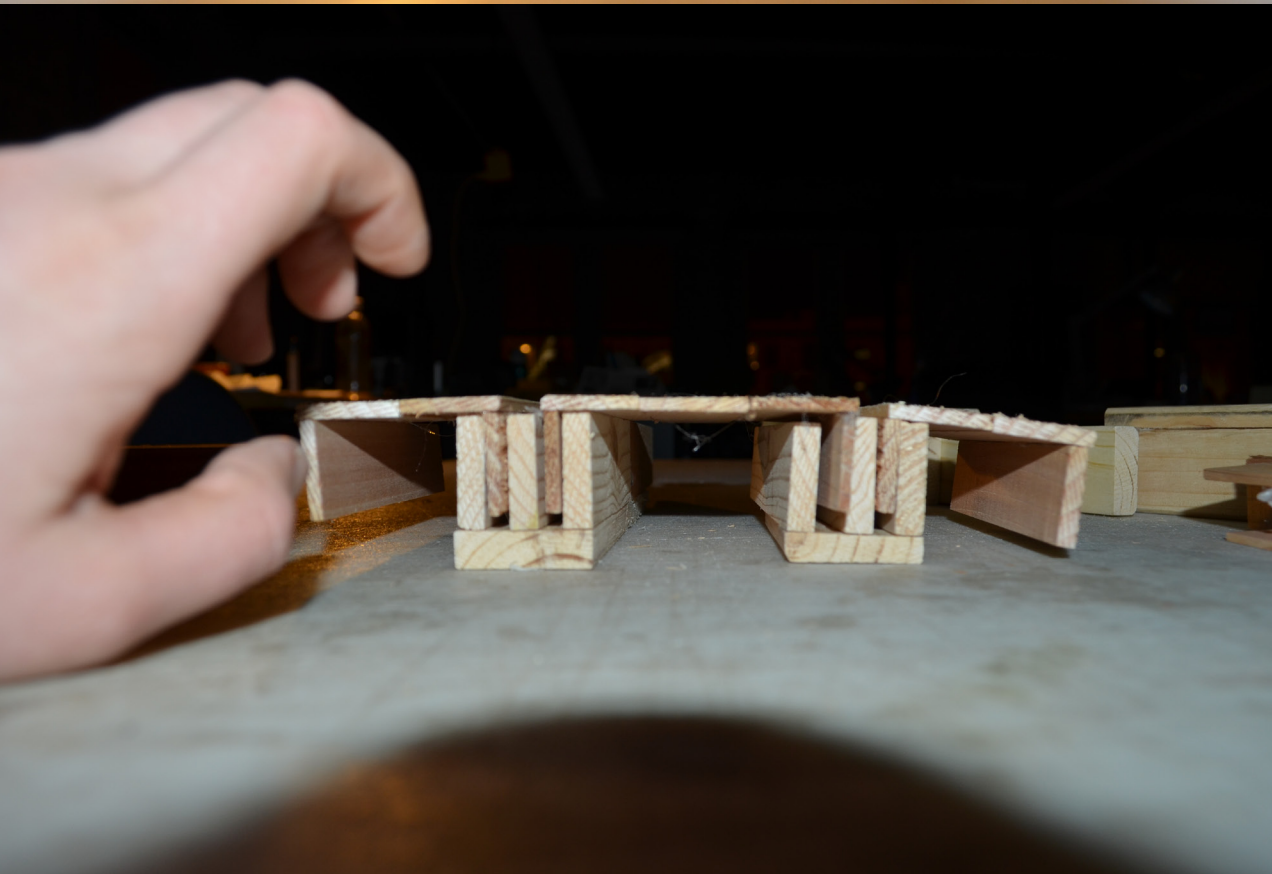
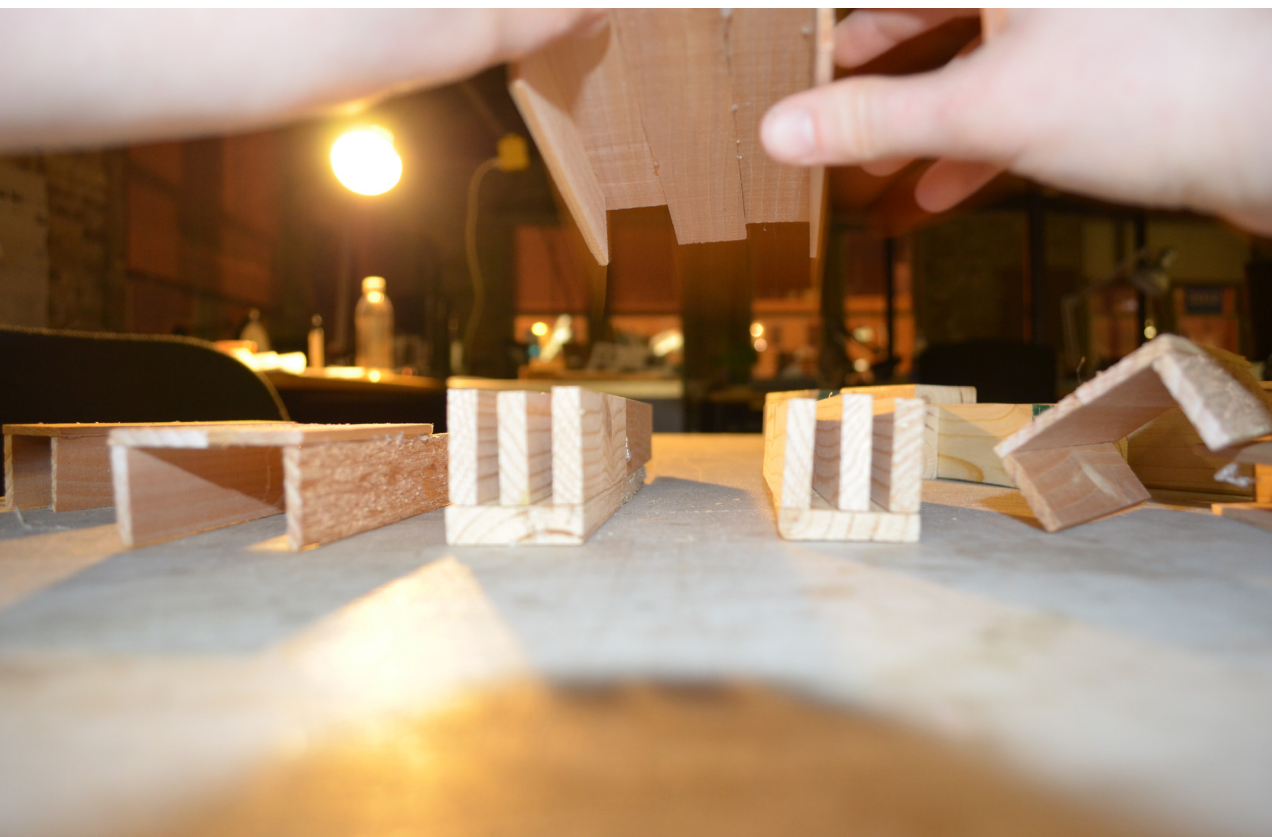
how to make this work
looks like a light day...

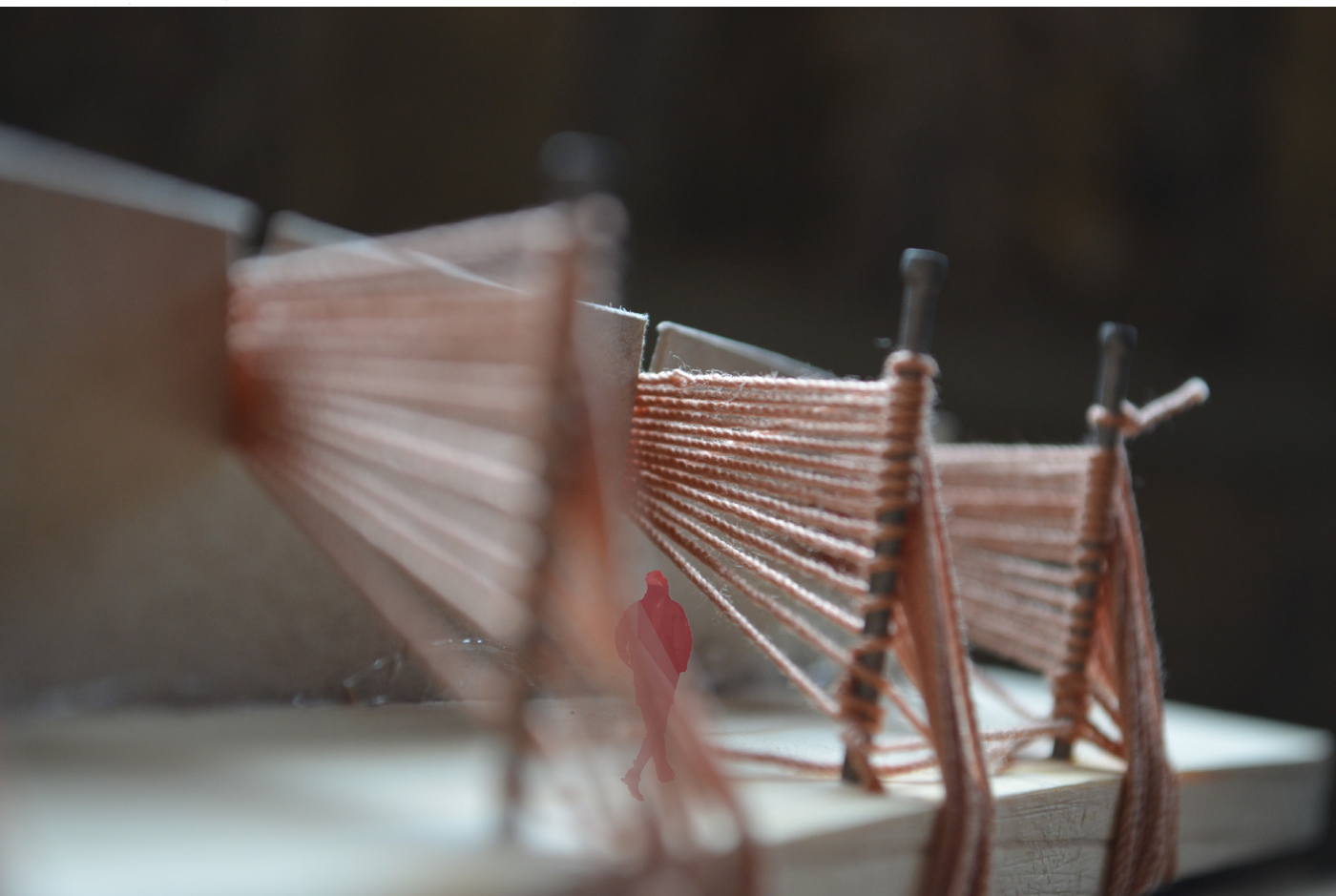
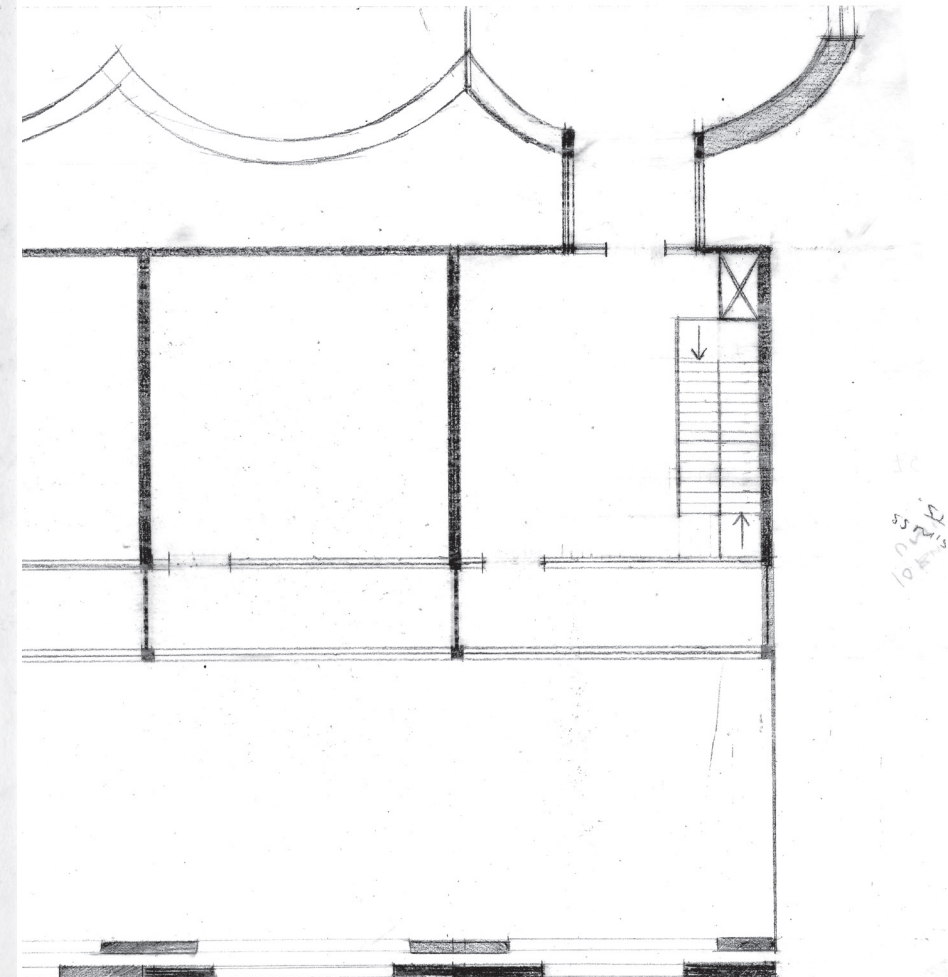
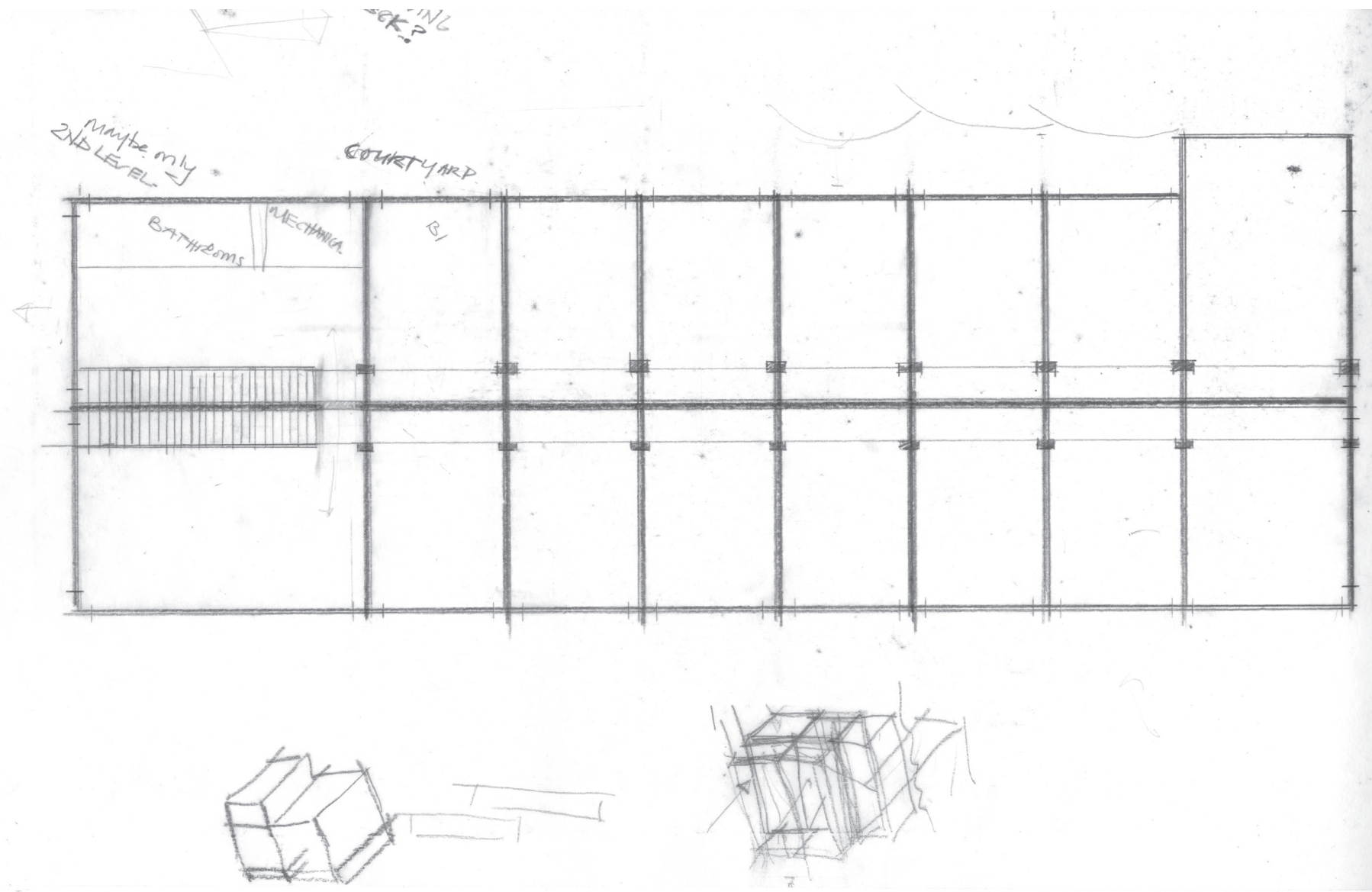
walkway

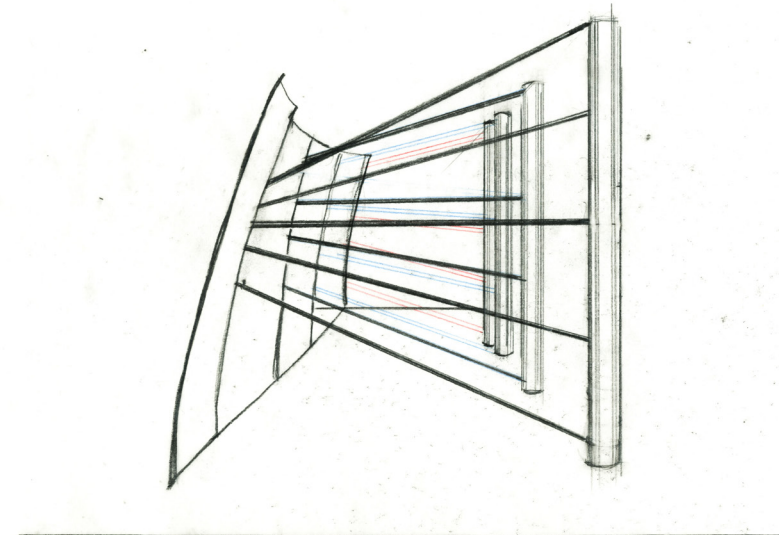
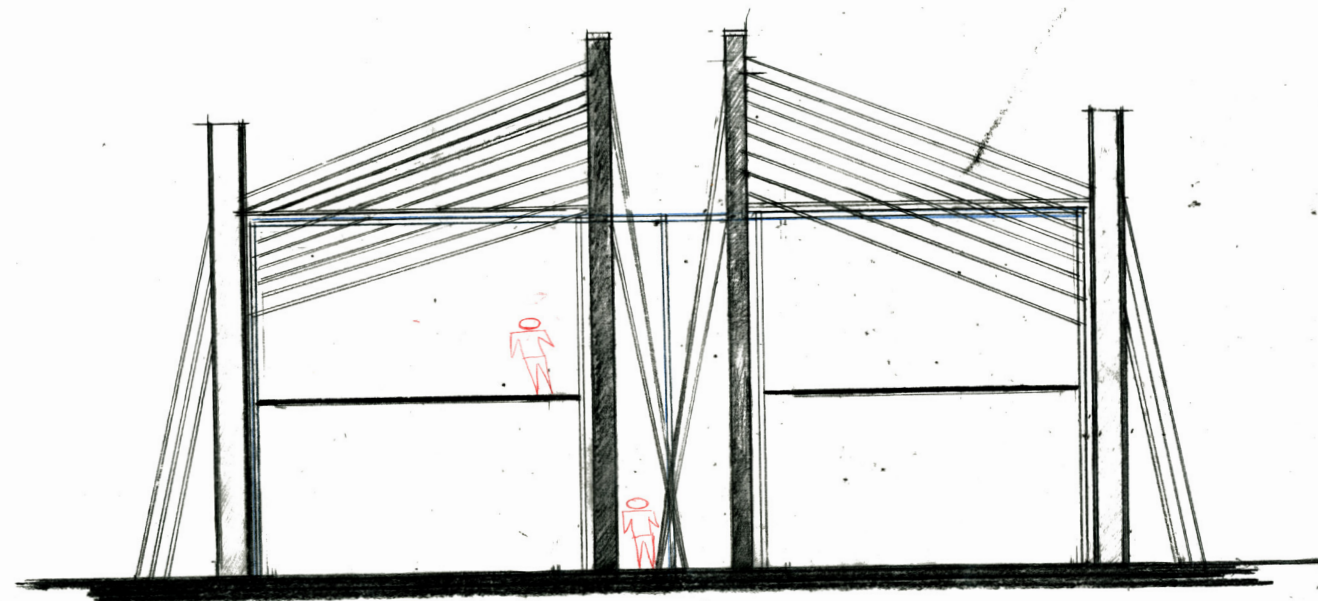
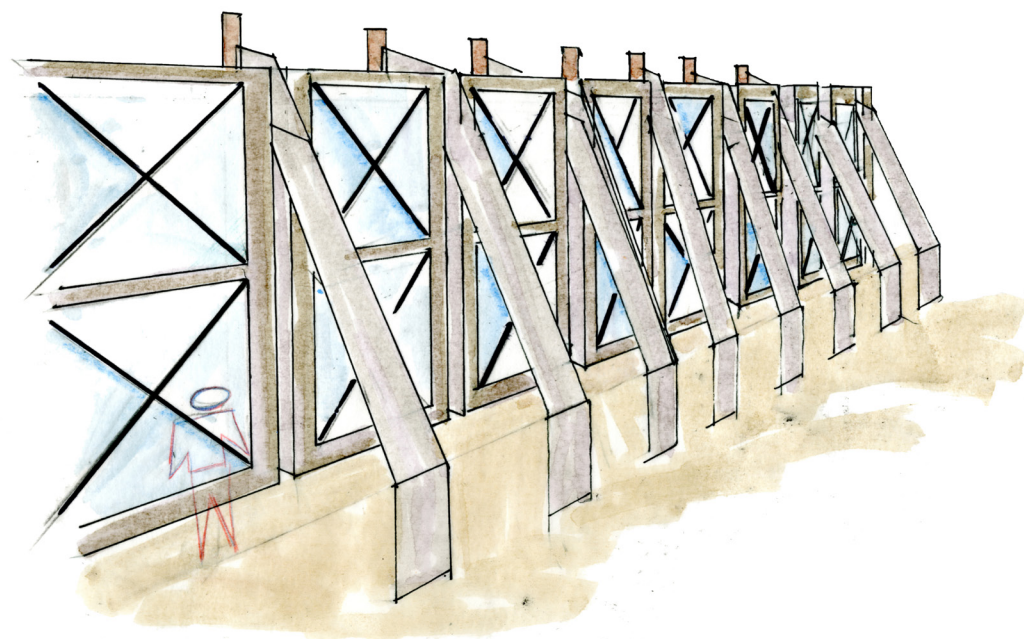
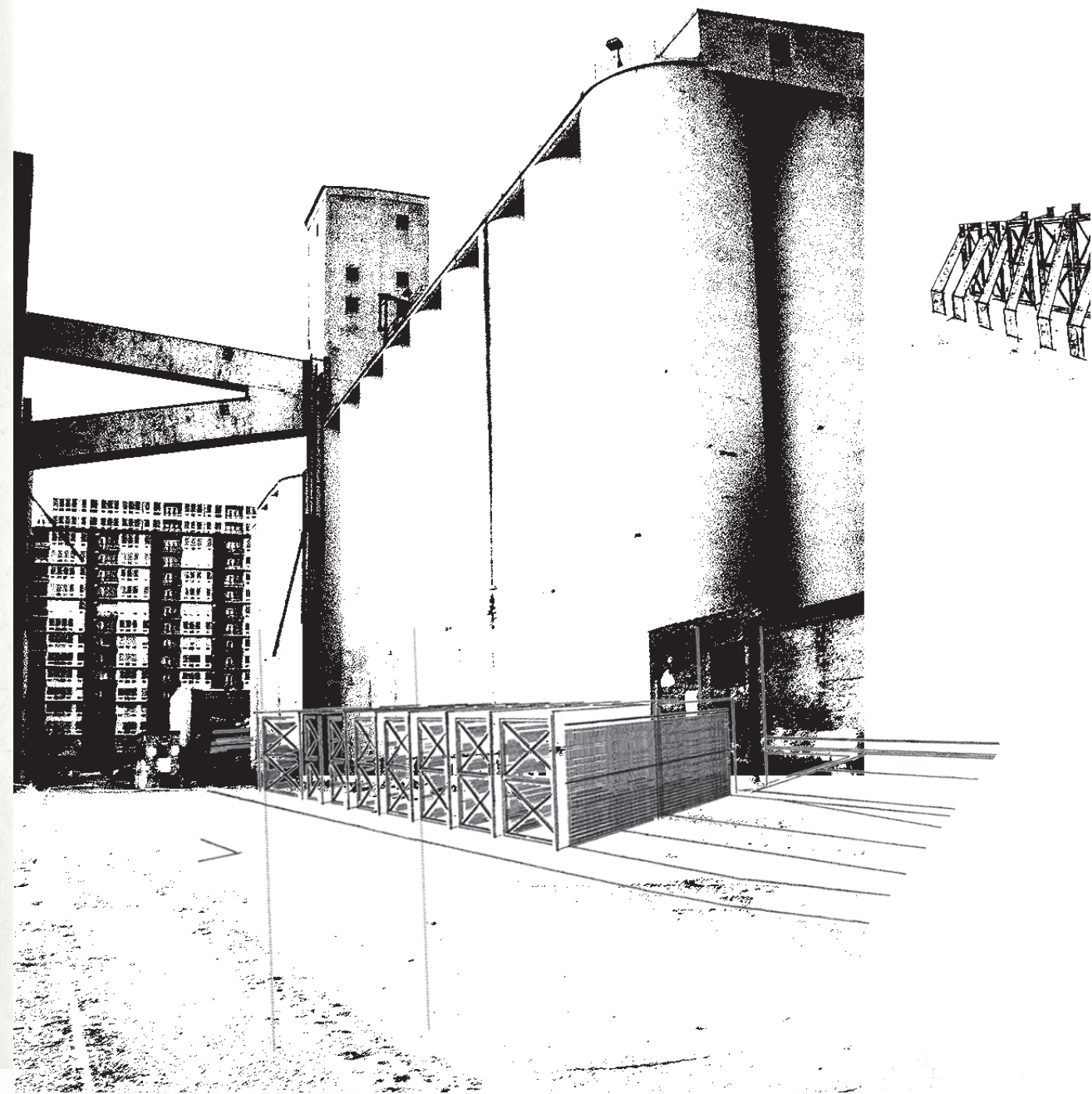
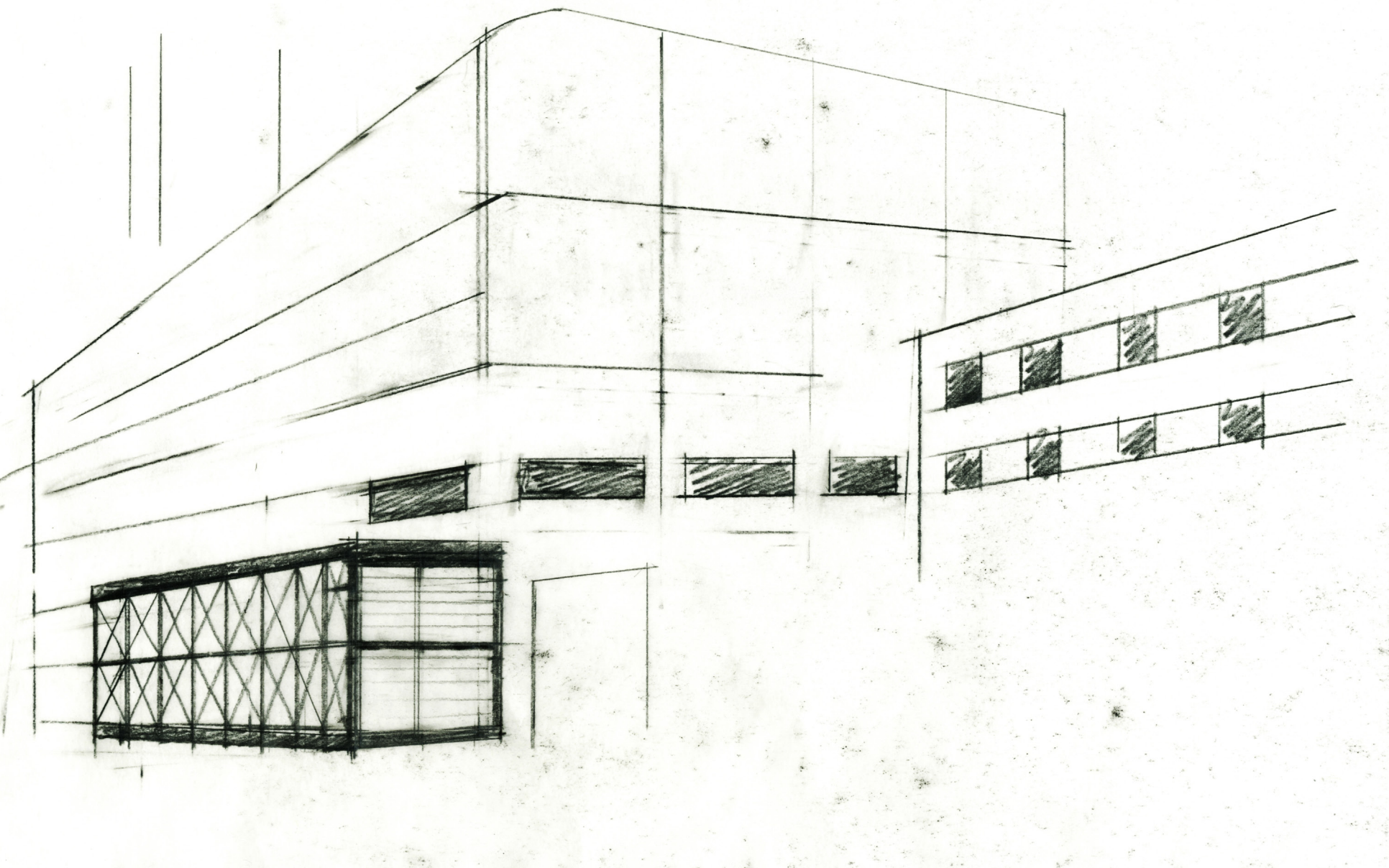
NAILS

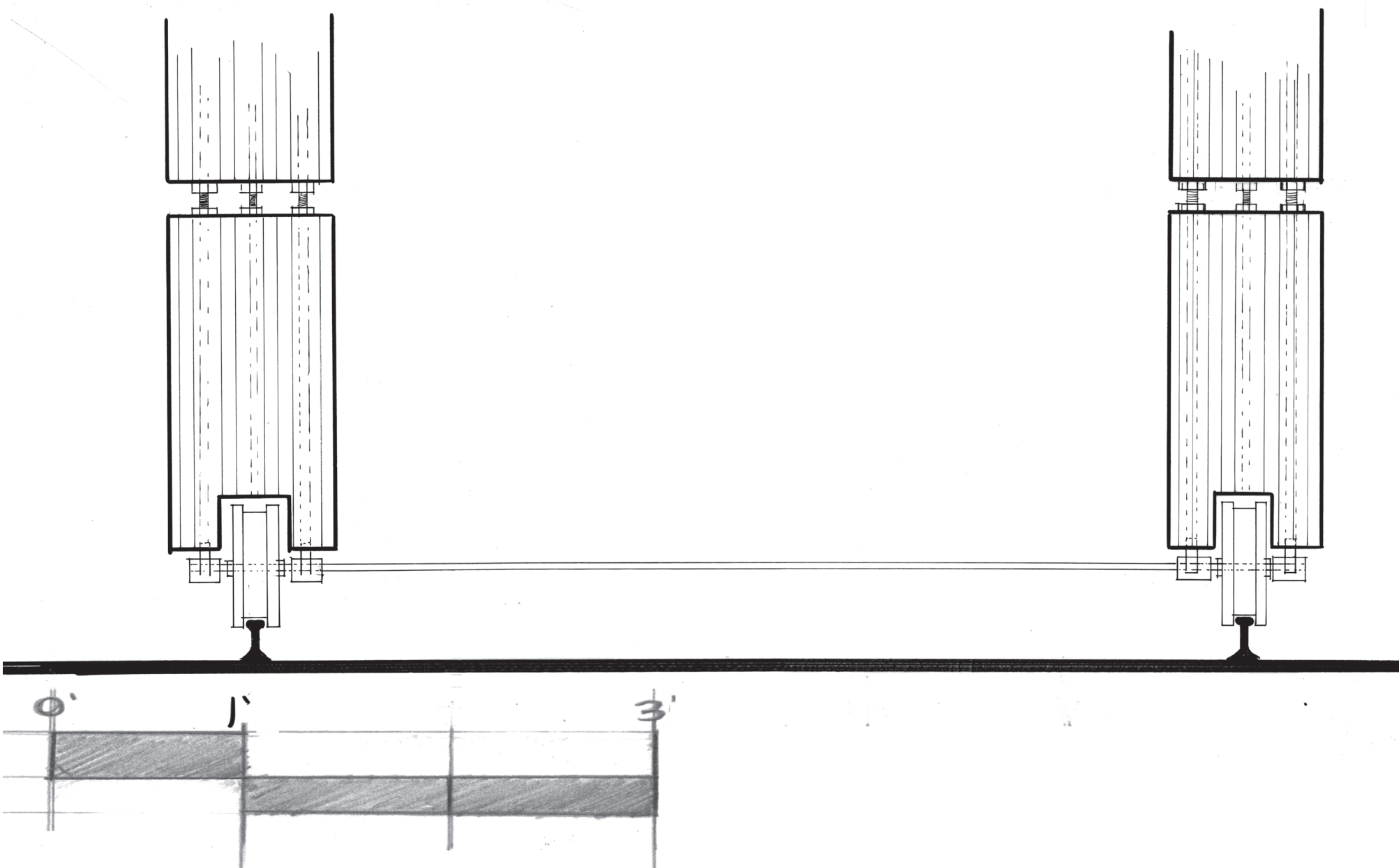
complicated.

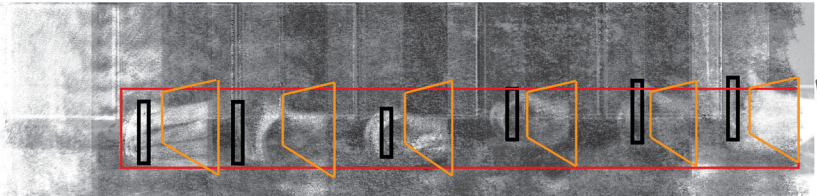
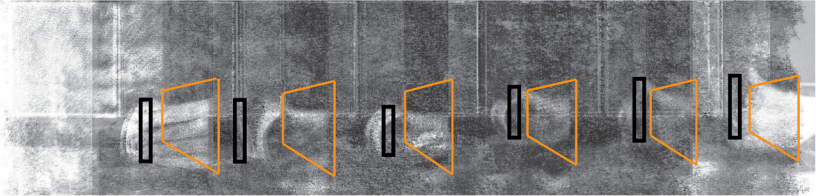
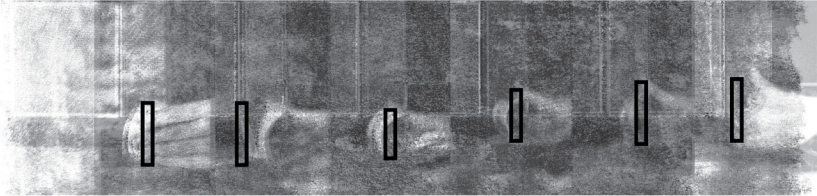
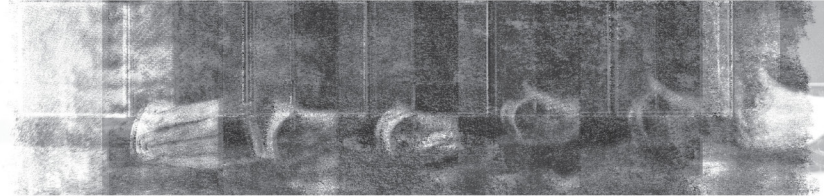
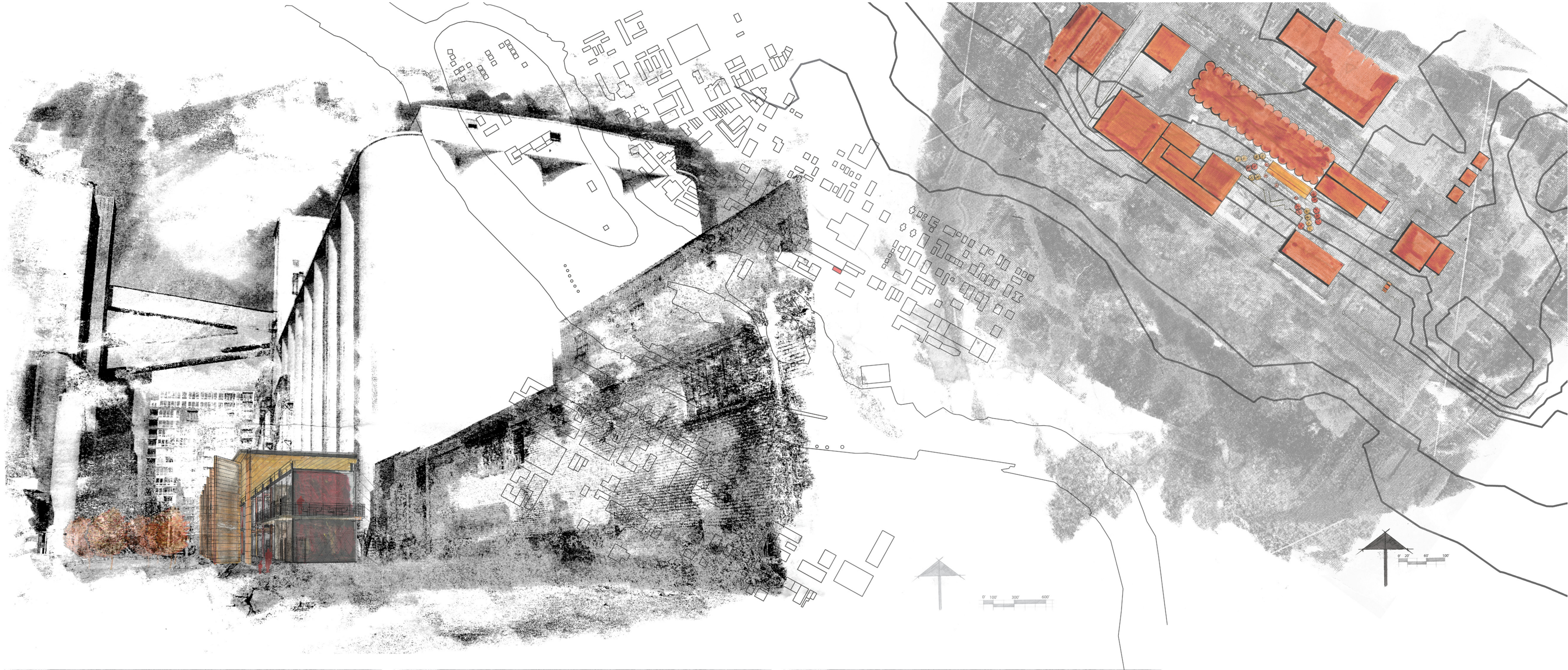
3/18/2012











Idea generated by the wind tunnel effect that is created on the site.



The Pillsbury A Mill site is on the list of endangered historical buildings. The site itself is one of the last ruins of what was once an entrepreneurial area. There have been multiple instances where renovation plans have come and gone. All but one building is considered a viable option. The building, coined the "White Silo," offers much more than previously thought.

The remnants of a once prosperous enterprise is left to question its future. With a modestly small Business Model Incubator, the project will provide a contrast and a start to the surrounding area.

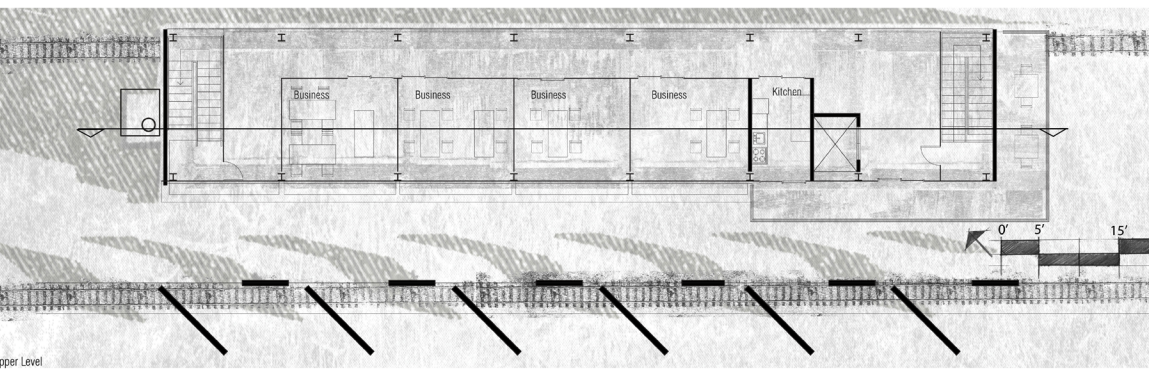
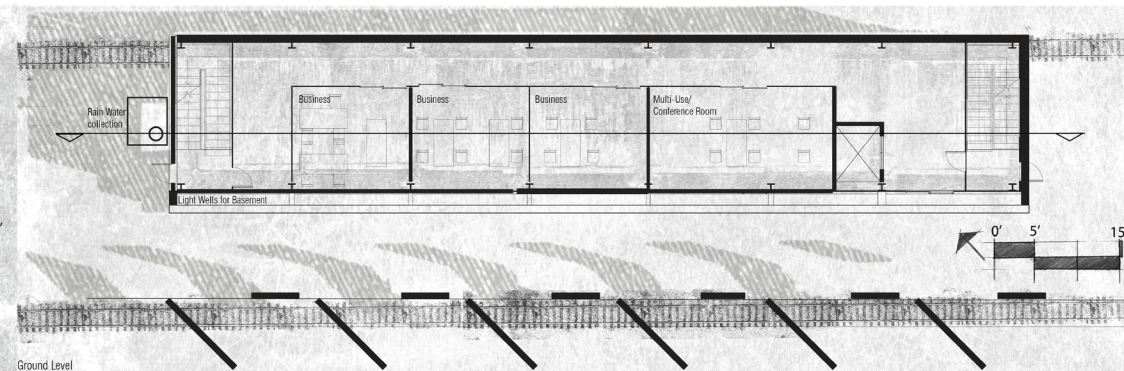


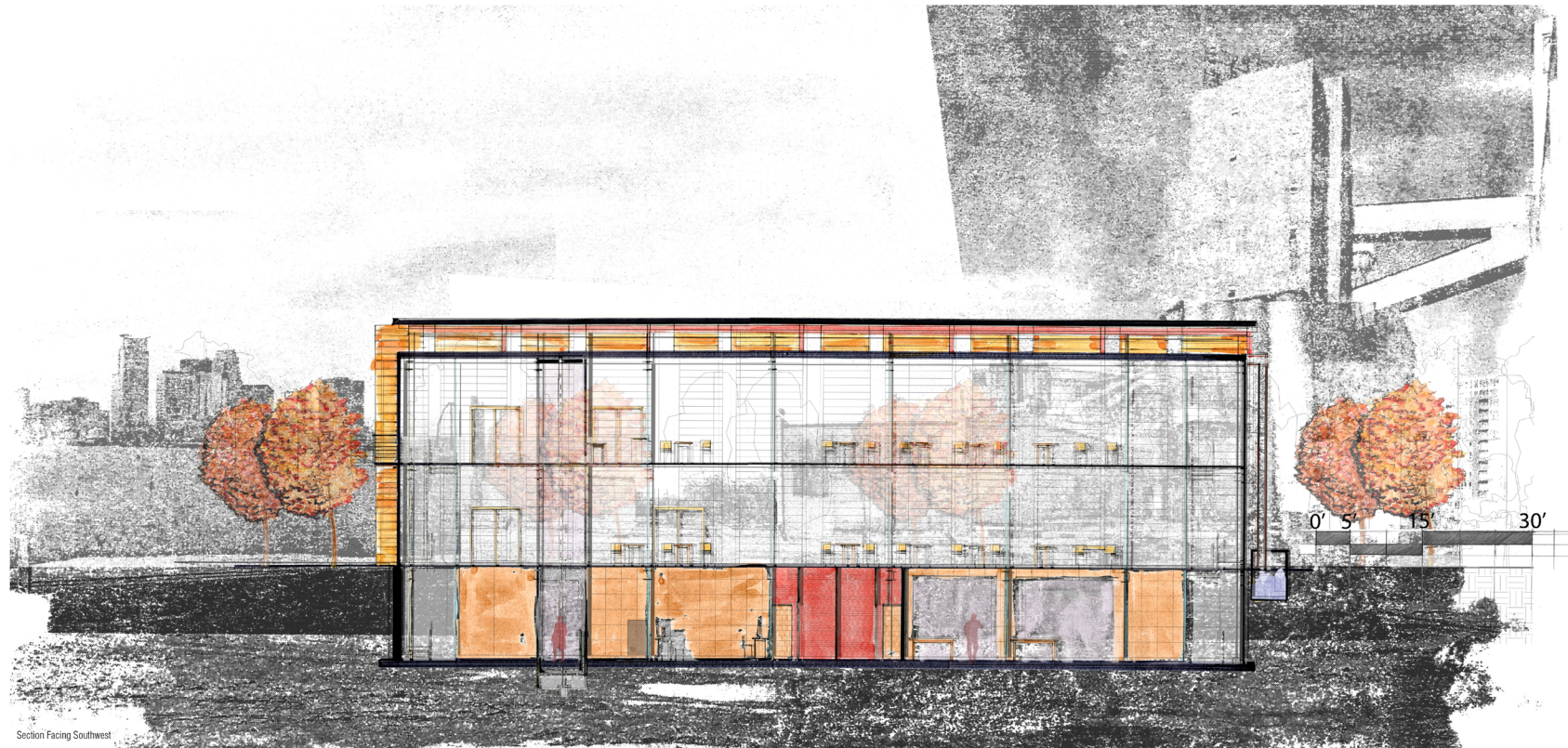
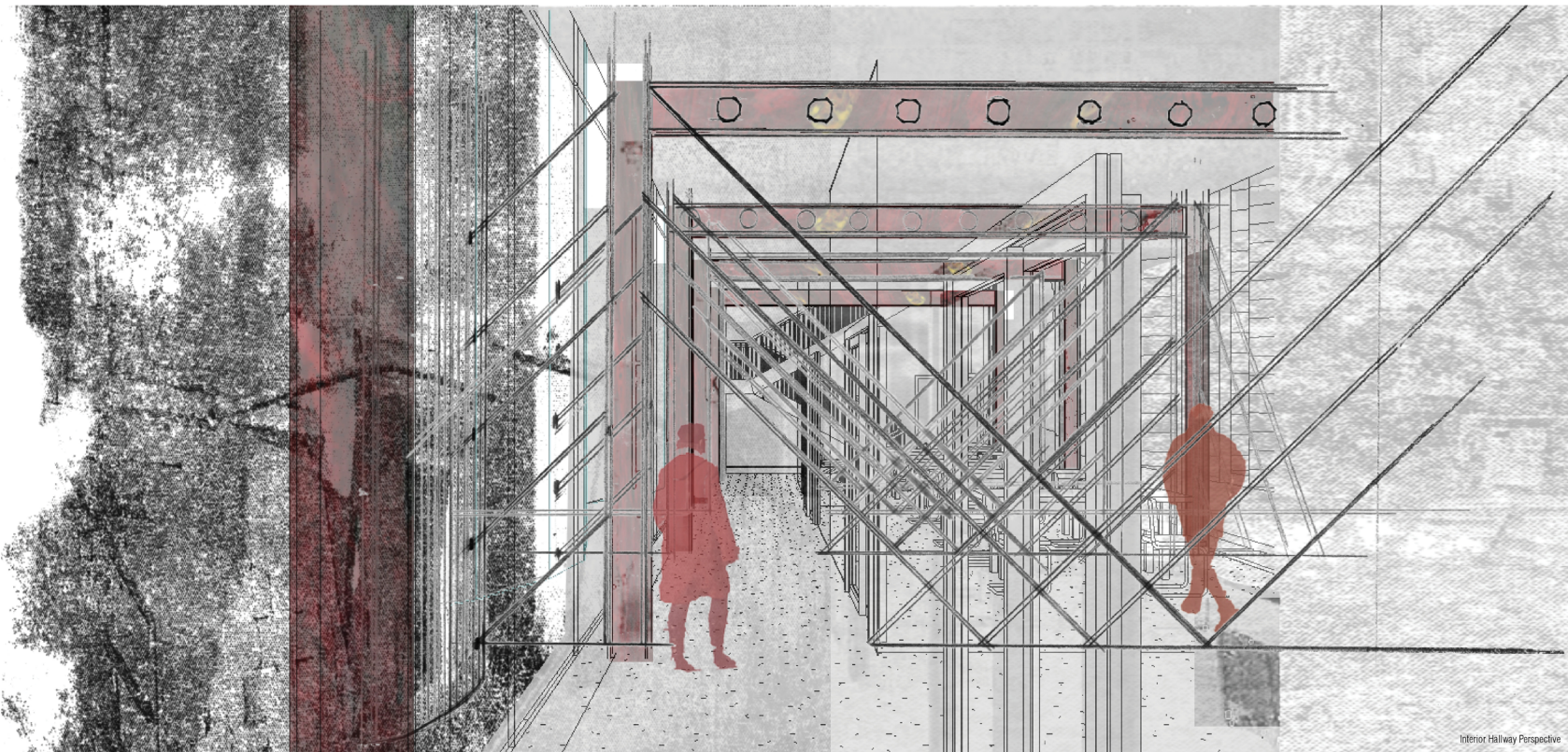
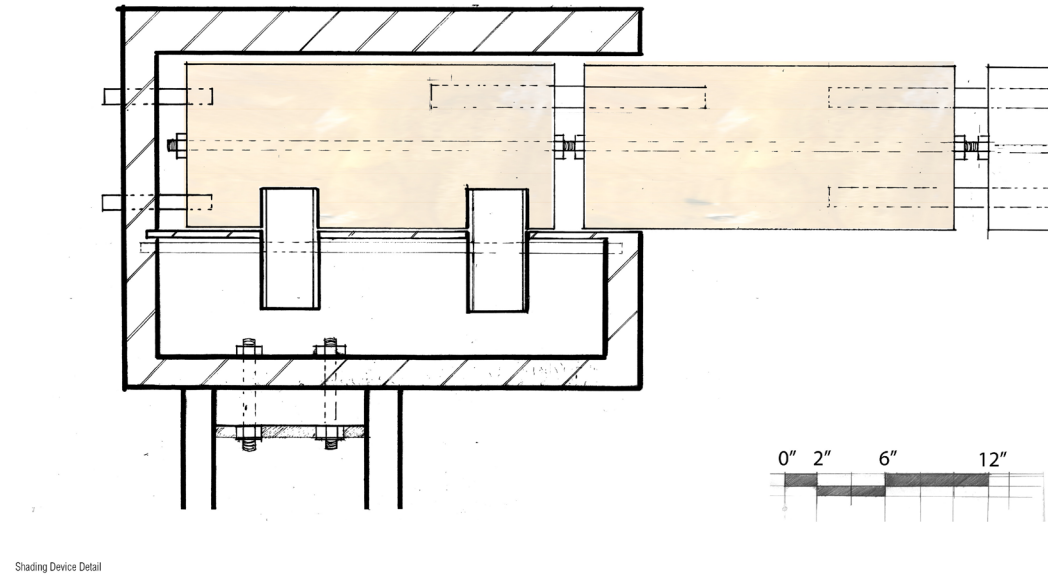
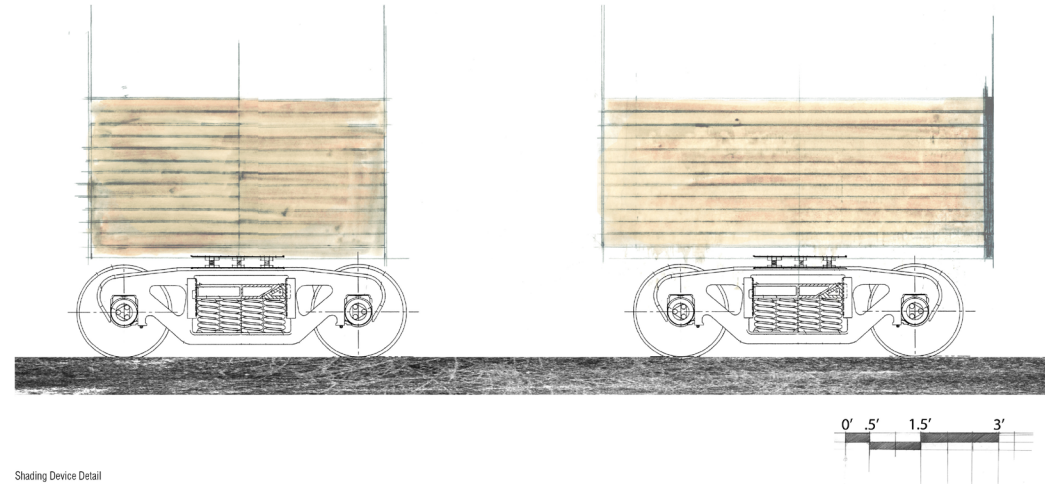
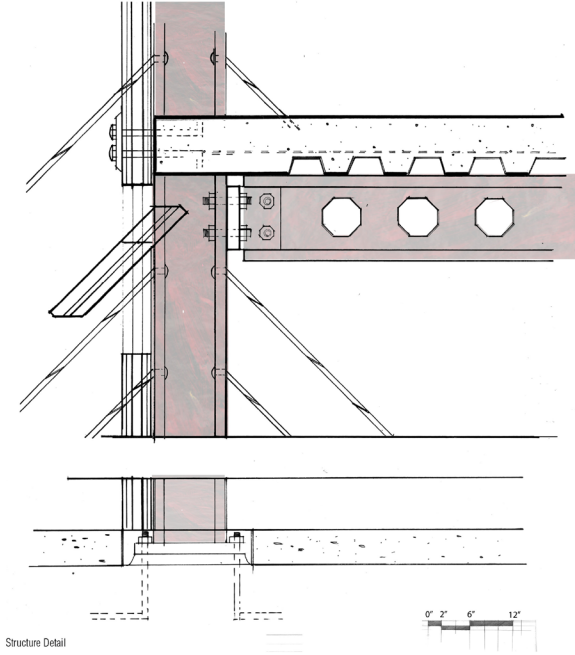
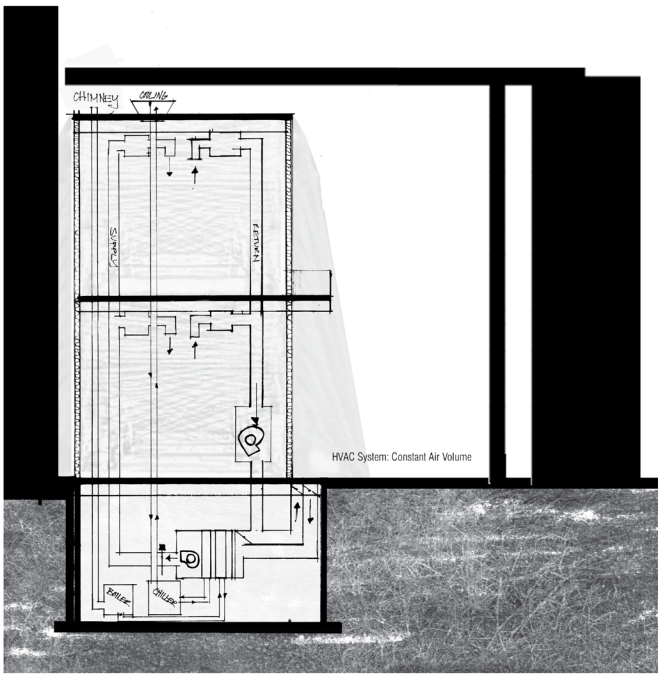
The structure was left intentionally small to create a contrasting scale to the surrounding buildings. It serves as a reminder of how unique the site is. The location should not be taken for granted as it is one of the last of the original milling sites along Saint Anthony Falls.

An idea was generated by the wind tunnel effect that is unique to the site. This man-made anomaly was the driving force that influenced the design process. The approach was made possible by the use of stop motion photography.



Sun shading device extended. Photovoltaics revealed on top of device.





The future?

