



architecture *for* community

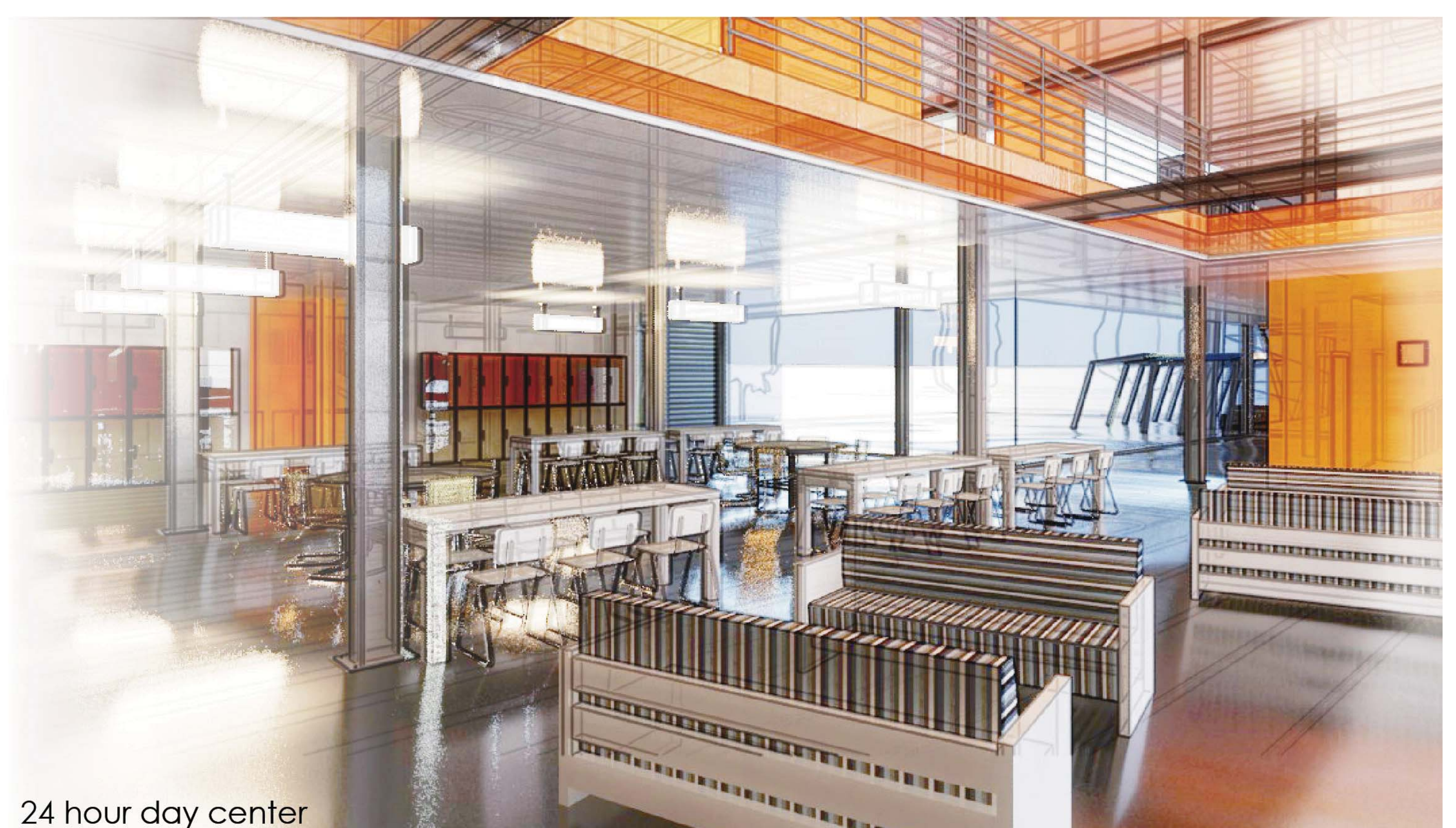
seattle, wa

redefining social architecture.

Concepts such as providing natural day lighting, sustainable materials, low energy use, and also spatial quality have implied consequences upon the users of a built environment. When these paradigms are applied in design, it can create an identity and a life satisfying experience for an individual that could concurrently impact their psychological wellbeing.



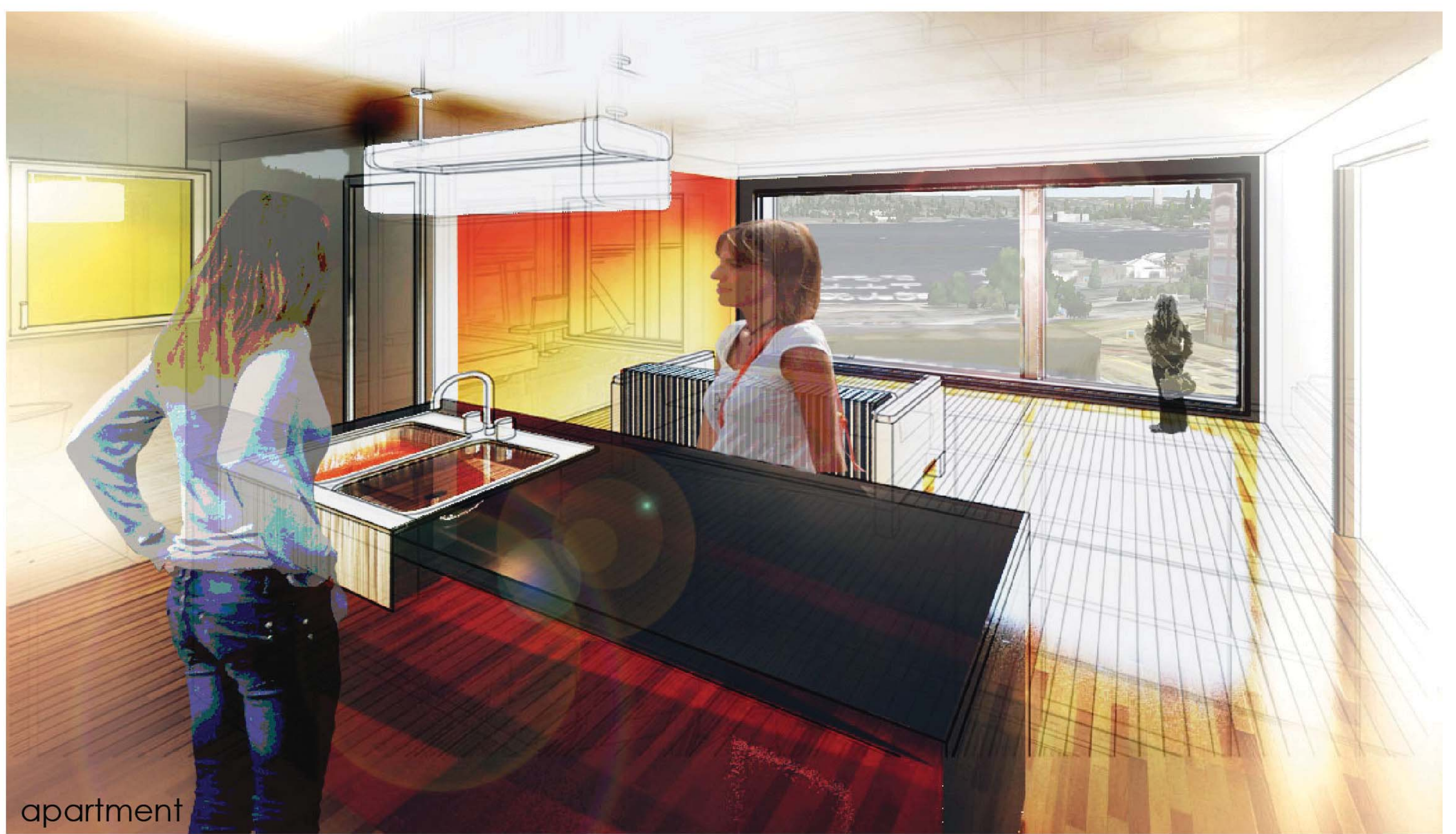
- 1
- i cafe
 - ii bakery school
 - iii storage
 - iv mechanical
 - v community center
 - vi 24 hr - day center
 - vii outdoor private courtyard



24 hour day center



library



apartment



south entrance



- 2
- viii woodshop
 - ix childcare
 - x library
 - xi chapel
 - xii offices
 - xiii bike storage



- 3 +
- xiv residences

