

# THE SPECTRUM

VOLUME LI

STATE COLLEGE, NORTH DAKOTA, FRIDAY, MAY 8, 1936.

NUMBER 31

## Plans Complete For Senior Prom Friday, May 15

Everett Perrin's Orchestra Signed by Manager to Play May 15

### ADVANCE SALES BRISK

Bill Johnson, Martha Wolfe To Be First in Line at Last Formal

When the band sounds for the grand march of the Senior Prom, last of the major social events, the leading couple will be Prom Manager Bill Johnson with his partner, Martha Wolfe. As assistant manager, Walt Jahnke with Nan Powers will be the second couple in the line. Third in line will be Senior Class President Cliff Altermatt with his partner, Ruth Schultz. The dance will be held in the field house next Friday, May 15, from 9 to 1 a. m.

One of the most popular bands in this part of the country, Everett Perrin and his 11-piece band, will furnish music for the affair. Since playing in Fargo last he has added another man to his band, which gives promise of even finer entertainment than before. At his recent visit to Fargo and NDSC he was exceptionally well received. Ad Nordmarken, former editor of The Dakota Student, who is acting as guest editor of the Spectrum this issue, says of Perrin's band, "It is one of the most popular dance bands ever to play at a University function."

Something novel and exceptional in the line of decorations for the field house has been promised by Ray Whitver, who is in charge of decorations. He plans the use of large painted "stretches" in the novelty effects for the stage, and numerous lights and balloons for the floor.

Ticket sales started yesterday and the immediate response by students indicate that this will be one of the most popular Senior Proms in recent years. Representatives at the various fraternity houses who are selling tickets are: Alpha Gamma Rho, William Purdy; Alpha Tau Omega, Donald Bettschen; Delta Tau Epsilon, Beryl Newman; Kappa Psi, Vern Johnson; Kappa Sigma Chi, Ray (Continued on Page Six)

## Mexico Theme Of YW Meeting, May 13

"A Night in Mexico City" is the theme to be featured at the last all-YWCA meeting of the school year, Wednesday May 13 from 5:30 to 8:30 p. m. in the "Y" auditorium. Marjorie Arnold is in general charge of arrangements.

A buffet supper of native Mexican dishes will be served at 8:30 after which a program of native songs and dances will be given.

The highlight of the evening will be an illustrated talk on Mexico City by Miss Delphine Rosa, YWCA advisor, who will show many slides on the old picturesque city.

Assisting with the arrangements are Phyllis Rowe, tickets; Marie Carlson, posters; Sally Minard, food; Mary Clark, entertainment; Naomi Skarison, invitations; and Evelyn Larson, properties.

## U Journalists Edit Spectrum



HELEN NYHUS



AD NORDMARKEN

Completing the 1936 Dakota Student-Spectrum editorial exchange, Ad Nordmarken, former editor-in-chief of The Dakota Student, edited this issue of the Spectrum. Assisting him was Helen Nyhus, associate editor of The Dakota Student.

Nordmarken is a member of Blue Key fraternity, Dakota Playmakers and Sigma Delta Chi, honorary journalistic fraternity. Miss Nyhus is a member of Alpha Phi social sorority, president of Matrix, honorary women's journalistic fraternity, secretary-treasurer of International Relations club, and a member of the Dean's council.

Jack Spalding, editor-in-chief of The Spectrum, was acting editor of the Tuesday edition of The Dakota Student.

## Two National Officers Here For ATO Province Meeting

### CAMPUS FINANCE HEADS MUST MEET IMMEDIATELY

All secretary-treasurers of student organizations are asked to confer at once with the council audit committee in room 209, Science hall, according to F. C. Householder, chairman of the committee.

Financial reports of all student organizations are due May 15. Miss Mathilda Thompson is another member of the committee.

W. Joyce Ayres of Lincoln, Neb., national music editor, and Judge W. M. Benton of Kansas City, Mo., worthy grand keeper of the annals, will be the two national officers attending the biennial conclave of Province of Alpha Tau Omega fraternity at N. D. S. C. today, Saturday and Sunday. They will give the principal addresses at a banquet in the Gardner Hotel Saturday at 7 p. m.

Opening the three-day program today will be a smoker at the fraternity house after a 6:30 p. m. dinner. Registration will be this afternoon. (Continued on Page Four)

## 41 Teams Compete In Judging Meet, Opening Contest Event

### Service Groups In Recognition

At the annual Recognition Day convocation held last Monday, Blue Key and Senior Staff, honorary service organizations, announced their newly elected members and the recipients of the annually awarded scholarships.

For the first time in the history of Senior Staff a person received both the P. E. O., Jenny B. Angel cash award and the Senior Staff sophomore tuition. This year Elsie Gabe, Applied Arts and Science, was so honored. Margaretta Bjorson received the Senior Staff sophomore tuition and Alice Larson, the N. D. A. C. women's club award.

Blue Key honored A. G. Arvold by conferring on him the Doctor of Service award to be presented at a formal banquet May 21. The Master Freshman certificate for scholarship was given to David Askegaard, and Robert Williams received the Blue Key junior scholarship.

New members of Senior Staff: Ethel Olson, Jane Schulz, Elizabeth Dewey, Katherine Kilbourne, Phyllis Coyne, Emma Jordre, and Alice Larson, were elected Sunday night at the customary serenading ceremony and publicly presented at convocation.

New members of Blue Key are: Donald Bettschen, Vardi Thorwardson, Robert Williams, Howard Hegbar, John Seeba, Ward Swanson, Eldred Lee, Donald Buchanan, and Gordon Arneson.

Senior Staff entertained its newly elected members and alumnae at a formal banquet at the Gardner, Monday evening. Frieda Panimon was in charge.

A junior class meeting will be held May 15 at 4 p. m. in the Little Country theater.  
Paul Boleyn, President.

Noble Sanders, Saddle and Sirloin Club, Faculty Manage Judging

### TRACK EVENTS TODAY

### All-College and High School Dance to Close High School Week

Forty-one teams competed yesterday in the annual May Festival stock judging event, the first in a series of vocational, cultural, athletic, and literary contests that will continue through today and Saturday, culminating in a banquet to be held in Ceres hall tonight and an all-college high school dance to be held Saturday night in the field house. A total of 249 high school students from North Dakota and western Minnesota had registered as the Spectrum went to press with at least double that number expected for the final contests today and tomorrow.

Noble Sanders was in charge of the stock judging event with members of the Saddle and Sirloin club assisting. The contest last year was won by New Salem with the Walsh County Agricultural School taking the sweepstakes award. The agricultural contests will be completed at noon today with final results and winnings to be announced at this evening's banquet.

Home economics and literary contests will be completed Saturday as will the track and field meet, preliminaries of which will be run off at Dacotah Field today.

Schools entering teams in the meet are: Grand Forks, Washburn, Oakes, Wahpeton, Buffalo, Casselton, New Rockford, Hunter, Tower City, Wimbledon, Minnewaukan, Sherwood, Sheldon, Hatton, LaMoure, Fargo, Valley City, Kensal, Lidgerwood, Sheyenne, Page, Jamestown, Park River, Anamoose, Beach, Barnesville (Minn.), Bemidji (Minn.), Bottineau, Bowbells, Carrington, Cavalier, Ege-land, Cooperstown, Drake, Grafton, Hannaford, Hazelton, Hunter, Kenmare, Larimore, Maddock, Mandan, Mohall, Moorhead (Mn.), Neche, New England, New Salem, Page, Ray, Rolette, Rolla, Rugby, Sarles, Sharon, Starkweather, Steele, Town-er, Velva, and Williston.

## 50 Botanists To Make Field Trip

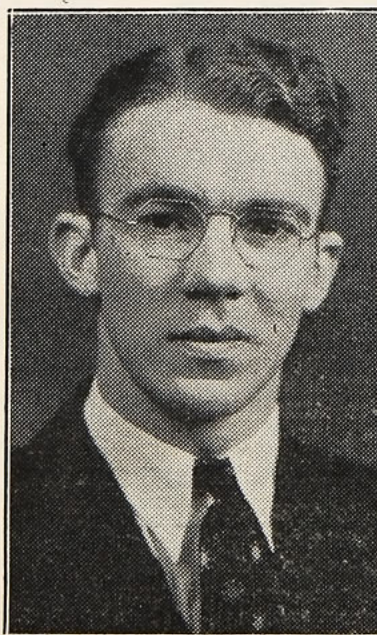
About 50 students and instructors in the botany department will hold a field trip to Lake Trowbridge, Minnesota tomorrow where they will study ecology, determine the age of the island and the lake, examine the relation of fungi to timber destruction, and study flowering plants.

Drs. Helgeson, Hanson, Stevens, and Brinley will take charge of the special study groups.

In charge of the trip are Charles Waldron, David Taylor, and William Kluender.

Delegates to the 1936 Psi Upsilon convention went on record as opposing physical punishment in connection with initiation.

## Distribution Of Bison Is Begun This Forenoon



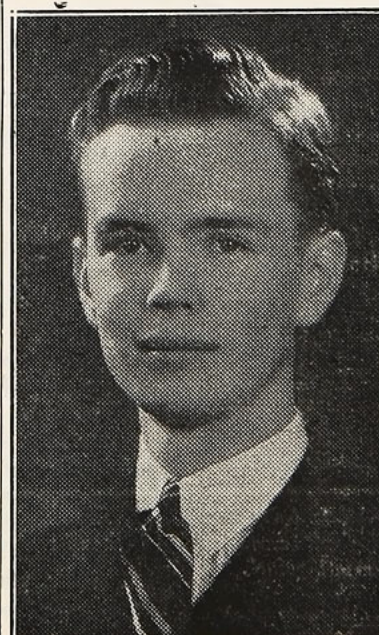
Warner Litten

### Representative Seniors Feature Annual N. Dak. Theme

Distribution of the 1937 Bison began at 9:30 a. m. today in Old Main, according to Wm. Murphy, editor. The distribution is in charge of Warner Litten, business manager.

Full page cuts of eight members of the graduating class chosen as representative seniors is a feature of the classes section. Elections were made by a faculty committee and were based on scholarship and leadership qualities.

Dedicated to North Dakota, the book carries a series of colored drawings on the division pages depicting the outstanding qualities of the state. A full page has been dedicated to Gov. Walter E. Welford and carries a personal message from him to the student body. (Continued on Page Four)



William Murphy

# The CRYSTAL

American Legion Mardi Gras

## Dance Tomorrow Night

## Fargo's Better Ballrooms

# The AVALON

Lem Hawkins and His Hillbillies



**SPECTRUM**

Official publication of the students of the North Dakota State college published every Friday during the school year.

1935 Member 1936  
Associated Collegiate Press  
Distributor of  
**Collegiate Digest**

MEMBER NORTH CENTRAL PRESS ASSOCIATION  
Entered as second class matter at the State College Station under the Act of March 8, 1879.

TELEPHONE 2221 TELEPHONE 2221

**EDITORIAL STAFF**

John B. Spalding.....	Editor-in-Chief
Orville Goplen.....	Associate Editor
Robert Williams.....	Associate Editor
Walter McGrath.....	Sports Editor
Don Buchanan, John Raymond.....	Sports Writers
Kent Helland.....	Desk Editor
Lennea Frisk.....	Desk Editor
Marjorie Laliberte.....	Desk Editor
Marjorie Arnold.....	Society Editor
Bob Taylor.....	Feature Editor

**REPORTORIAL STAFF**

Roberta Gregg, Eloise Pfeffer, Tom Donovan, Leslie Gruber, Joseph Wright, Jane Chaney, Phyllis Rowe, Vinnie Olson, Herschel Hutsinpillar, Jo Connelly, Florenz Diawoodie, John Lynch, Alfred Murfin.

**BUSINESS STAFF**

Francis Walters..... Business Manager

**BISON BRIEFS**

By AD NORDMARKEN,  
Editor, The Dakota Student

How!—a greeting to the common Bison Herd from two transient Sioux scribes. We are trying to scribble a column, and (so again) how?

Astonishment: Cab drivers don't know where The Spectrum office is! "Back home" at the U they all know the location of The Student office, and make frequent visits there on official business. But then, maybe you PAY your taxi bills.

Biggest Boner: Forgot to dispatch a telegram to Bison ballyhooer Spalding, so dropped one off the bus in Hillsboro giving warning of our arrival at 10:30. The message got here at 11.

Little Boy Blue, come blow your horn,  
—Do you wanna run over people?

A North Dakota labor wage list reads: power shovel operator—\$1.20 an hour; bricklayer—\$1.20; stone cutter—ditto amount; plasterer also same sum—and WE go to school!

Humpty Dumpty sat on a wall,  
And in falling found no recompense,  
Which may be a nursery rhyme moral,  
For politicians who sit on the fence.

Simplified spelling suggestion for the vain, victorious, proud, protruding-jawed Italian dictator: Muscled-in-i.

Schools seem much the same. The editor cutting classes; no soap in washrooms, energetic engineers infesting lawns and peering through telescope; Christmas trees planted in every vacant space; spring fever rampant; jewelry thieving coeds abundantly adorned with trophies of the hunt—and readers bored with dead columns.

But, people who live in gas houses shouldn't light matches—or such. Anyhow, I'm (shades of Dick Holzer) doin' the best I can!

Deep disappointment note: Five hours on the A. C. campus and not a cow in sight!

Of course I saw a big bellowing bull specimen over in the pastures, but figured perhaps it was just material for The Spectrum verbal matadors, bull fighters to you.

**BLUES NOTE**

Early to bed and early to rise,  
Makes a man healthy, and wealthy, and wise—  
Yeah—so when they dig you down deep under the berm,  
You'll make better food for some hungry worm.

They accuse Hearst of "jingoism"—me of "jingle-ism." Us big newspapermen! Anybody got a job?

Financial thought: Steel magnates draw large salaries.

And here's a bit of newspaper style knowledge for Fargo journalists: The University's newspaper title is spelled The DAKOTA Student, the yearbook is the DACOTAH publication. But if you err, don't weep tremendous tears or contemplate immediate self-extinction, our own staff gets it wrong occasionally.

The office air is filled with excitement about the new A. C. yearbook which will be revealed and distributed to the eager campus populace this dawning. With no conscious effort of horning in on the Bison we remember unhappily the last year yearly edition. This humble word-worker had batted out a somewhat below level humor column which did a boomerang trick, with all the laughs dying suddenly and tragedy imminent when sin-sensitive professors began to chew teeth and remove scalp covering. They didn't like it. But the storm cleared and here we are, still writing. (P.S.—This should be a good argument against criminal parole—or something.)

One advantage bald people have, they don't have to worry about falling hair.

Dancers should always be on their toes—or somebody else will.

Rice Institute, Texas, gives an unofficial intelligence test to student campaigners before elections.

**Theatre Reviews**

"Sanders of the River" starring Paul Robeson and Jean Gardiner is showing at the Roxy theatre today and tomorrow. Claudette Colbert and Melvyn Douglas act in "She Married Her Boss" the following four days. Wheeler and Woolsey's latest comedy "The Nitfits" will show next Thursday, Friday, and Saturday.

Ginger Rogers and Fred Astaire appear in R. K. O.'s newest musical comedy "Follow the Fleet" at the Fargo theatre Saturday through Tuesday. "The Prisoner of Shark Island" with Warner Baxter and Gloria Stuart is scheduled for the following three days.

"Man Hunt" with Ricardo Cortez, Marguerite Churchill, and William Gargan is playing at the State theatre today and tomorrow. "Boulder Dam", a story of the world's greatest engineering job, with Patricia Ellis, Ross Alexander, and Lyle Talbot will show Sunday, Monday, and Tuesday. Preston Foster and Margaret Callahan act in "Muss 'Em Up" Wednesday and Thursday.

Edward Arnold heads the cast of "Sutter's Gold" showing at the Grand theatre Sunday, Monday, and Tuesday. He is supported by Lee Tracy, Binnie Barnes, and Katherine Alexander. "You May Be Next" with Ann Sothern and Lloyd Nolan is to come to the same theatre Wednesday and Thursday. "Every Saturday Night" starring June Lang and Jed Prouty will be on the screen next Friday and Saturday.

The University of Pennsylvania had a "fault-finding day" recently. Everyone aired his pet gripes, but knockers claimed nothing was done about any of them.

**SOCIAL CALENDAR**

Friday, May 8:  
May Festival.  
Delta Tau Epsilon Founder's Day banquet, 6:00-8:00, at the house.

Saturday, May 9:  
May Festival.  
Alpha Tau Omega conclave party, 9:30, Country Club.

Sunday, May 10:  
Lutheran Students Association meeting, 4:00, YMCA.  
Gamma Phi Beta Mothers' Day tea, 3:00-5:00, Gamma Phi Beta rooms.

Monday, May 11:  
Panhellenc scholarshp dinner.

Wednesday, May 12:  
Alpha Phi Omega meeting, noon, Ceres hall.  
YWCA dinner, 5:30.

Friday, May 15:  
Senior Prom, 9:30-1:00, Physical Education building.

**FOR YOUR CONVENIENCE CUT THIS OUT!**

**Movie Calendar**

WEEK STARTING MAY 10

**FARGO Theatre**

SAT., SUN., MON., TUES.,  
May 9-10-11-12  
Fred Astaire, Ginger Rogers in "Follow The Fleet" with Randolph Scott

WED., THURS., FRI.,  
May 13-14-15  
Warner Baxter, Gloria Stuart in "The Prisoner Of Shark Island" with Harry Carey

**GRAND Theatre**

SUN., MON., TUES.,  
May 10-11-12  
Edward Arnold, Lee Tracy in "Sutters Gold" with Binnie Barnes

WED., THURS., MAY 13-14  
Ann Sothern, Lloyd Nolan in "You May Be Next"

FRI., SAT., MAY 15-16  
June Lang, Thomas Beck in "Every Saturday Night"

**STATE Theatre**

SUN., MON., TUES.,  
May 10-11-12  
"Boulder Dam" with Ross Alexander, Patricia Ellis and Lyle Talbot

WED., THURS., MAY 13-14  
Preston Foster, Margaret Callahan in "Muss 'Em Up"

FRI., SAT., MAY 15-16  
Paul Muni, Ann Dvorak in "Dr. Socrates"

Sat. Morning, May 16 at 10 o'clock (On Our Stage)

'UNCLE KEN'S KIDDIES KLUB' (On Our screen) "Red Hot Tires" with Lyle Talbot

**MOORHEAD Theatre**

SUN., MON., May 10-11  
"Annapolis Farewell" with Sir Guy Standing, Richard Cromwell and Tom Brown

TUES., WED., MAY 12-13  
Greta Garbo, Frederick March in "Anna Karenina"

THURSDAY, MAY 14  
Edmund Lowe, Karen Morley in "Thunder In The Night"

FRI., SAT., MAY 15-16  
James Cagney, Margaret Lindsay in "The Frisco Kid"

**Welcome May Festival Delegates.**

On behalf of the administration and students of North Dakota State college, The Spectrum bids the May Festival delegates welcome to this campus. It is our sincere desire that your stay here will be a pleasant one and that we may be able to add to your enjoyment. The fact that you are here as delegates to this festival is evidence of the fact that you represent the top in your various forms of endeavor and it is this type of student that we hope may be enrolled here in the years to come.

So while you are here, feel free to call upon the students of the college for any information or help that you may desire and if we can we will help you. Once again welcome, and may we see you back next year either as delegates or as students.

**Is Mussolini Slipping?**

Addis Ababa has fallen! Mussolini has successfully driven the Lion of Judah from his den, and can now claim for Italy the miles of Ethiopian territory with its rich mineral and oil deposits and its millions of new subjects to kowtow to the mighty dictator.

When inaugurating the military campaign, Mussolini's public line of defense was pressure of population in Italy. But why didn't he remove the bars to Italian emigration? Why didn't he suppress the state propaganda against birth control?

No, pressure of population was obviously not his motivating reason. More logical is the argument that he has been slipping in the "public eye." For a long time there has been growing unrest among the Italian people—they still smart from their failure to get more territory after the World war—and even military glory is no recompense to the people in a country where democratic rights have been reduced to a farce; where public elections have degenerated to simple approbation of Mussolini's policies; and where the Senate is packed with Il Duce's yes-men.

But a war is a costly vehicle in which to ride back into the public eye. His glory may be short-lived and he'll regret not having liberated the legal slaves of his own country—rather than the economic ones of Haille Selassie, for then he would have achieved public favor at a lower cost in money and in lives.

(By Associated Collegiate Press)

The American Student Union was termed part of a "Communist-controlled movement" by delegates to the D. A. R. convention.

Edwin Markham, famed poet, will be honored by Princeton university on his 84th birthday.

Notre Dame will open a special department for the training of Catholic apologist writers in September.

University of Oklahoma archeologists have discovered skeletons of Indians believed to have been buried 300 years ago.

"More destructive than constructive" is the practice of working through college, says President Conant of Harvard.

Yale, Harvard, University of Wisconsin and University of Buffalo men have leading positions on the new GOP brain trust.

Want A Cab...  
**444**

"Expert Watch and Jewelry Repairing"  
**WIMMER'S**  
FARGO JEWELRY MFG. CO.  
"Walk a Flight and Buy Right"

For . . .  
**SPALDING'S**  
• Tennis Rackets  
• Golf Clubs  
• Tennis and Golf Balls  
SEE . . .

**Carlisle & Bristol**  
HARDWARE ~ SPORTING GOODS  
67 Broadway Phone 757

**Viking Cafe**

**Frank McKone**  
CIGAR CO.  
Quality Candy  
Phone 21 & 1



### Architects, Artists Sponsor Exhibits

The NDSC Department of Art and the Department of Architecture sponsored a reception and exhibition in Festival hall Thursday evening from 7 to 10, in connection with the inter-high school May Festival. The exhibition was divided into two groups, traveling exhibits and student exhibits.

The traveling exhibits consisted of the following: oil paintings by contemporary American artists, from the College Art Association; Lithographs, Boulder Dam Series, by William Wollett; Costume Design, from the Traphagen School of Fashion, New York City; and a Ceramic Demonstration by Margaret Kelly Cable, associate professor of Ceramics at the University of North Dakota. The Ceramic demonstration was sponsored by Phi Upsilon Omicron and Tryota.

Student exhibits were shown by the architecture and art departments. The architecture department presented exhibits of architectural design, architectural models, creative design, freehand drawing, individual problems and working drawings. The art department showed exhibits of applied design, contour drawing, costume design, oil paintings, textile design and clay modeling.

#### KAPPA KAPPA GAMMA TO INITIATE 16 MEMBERS

Kappa Kappa Gamma sorority will hold initiation exercises for 16 girls tomorrow at 1 p. m. in the chapter rooms. Formal banquet by the actives for the new initiates will be at 10:30 p. m.

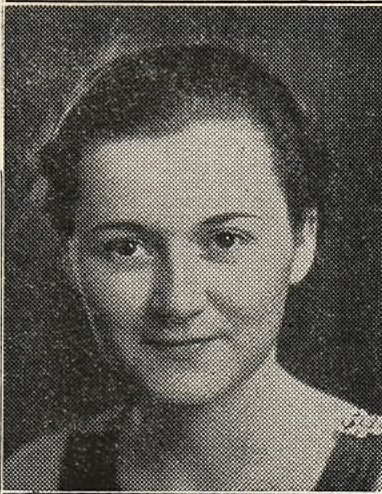
Those to be initiated are Louise McCutcheon, Dorothy Cone, Alice Piers, Claire Putz, Frances Johnson, Marjorie Simmons, Phyllis Olson, Alice Crahan, Dorothy Hawkinson, Jane Willson, Donna Jean Davis, Marjorie Kreiser, Mary Margaret Burns, Florenz Dinwoodie, Roberta Gregg, and Harriet McDowell.

**Kappa Delta**—Edith Quammy Meinecke, sorority member from the "U" of Minnesota, was a guest in the chapter rooms during the week end . . . Second degree services were held Monday night for Jean Leake. She will be initiated May 17 . . . Sorority Mother's club will be honored at a Sunday night supper in the rooms. Mothers who live out of town will receive greetings.

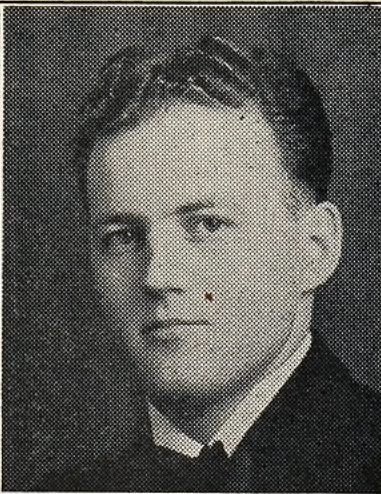
**Sigma Chi**—Morton Larson and Sterling Byerly spent last week end in Mandan . . . Frances Walters and William Murphy are guests of Alpha Sigma chapter at the "U" of Minnesota . . . John Raymond was at the Old Soldier's Home in Lisbon last week doing surveying for civil engineering.

**Kappa Kappa Gamma**—The annual alumnae picnic was held Monday

### SECOND IN LINE AT SENIOR BALL



Nan Powers



Walt Jahnke

night with the active chapter in the Tourist park . . . Genevieve Hawkinson was awarded the scholarship traveling cup for her high average . . . Dorothy McPhail and Lucille Clark, former students, attended the picnic and meeting Monday night . . . Commemorating Mother's Day, all sorority girl's Mothers will receive roses.

**Alpha Gamma Delta**—Actives and pledges were entertained at a tea in the home of Clara Richards, patroness, on Sunday, May 3 . . . Esther Watson and Emma Mae Brittin spent the weekend at their homes in Bismarck . . . A tea honoring the mothers and patronesses of the Sorority will be held on Mother's Day in the chapter rooms. Eleanor Oman and Marylyn Butterwick and LaVahn Buhrmann are in charge . . . Marylyn Butterwick has been ill for the past week.

#### FARGO CLINIC

Adjoining St. Luke's Hospital  
PHONE 4600 PHONE  
DR. OLAF SAND  
Diseases of Women, Diseases of Stomach  
DR. N. TRONNES  
General Surgery  
DR. O. J. HAGEN  
General and Thyroid Surgery  
DR. WM. F. BAILLIE  
Genito Urinary Surgery and Skin Diseases  
DR. WM. C. NICHOLS  
Diseases of the Heart and Internal Medicine  
DR. JOEL C. SWANSON  
Bone and Joint Surgery  
DR. WM. A. STAFNE  
Diabetes and Internal Medicine  
DR. GEO. C. FOSTER  
Eye, Ear, Nose and Throat  
DR. G. W. HUNTER  
Obstetrics, Pediatrics and Gynecology  
DR. RUSSELL A. SAND  
Dentistry  
DR. T. P. ROTHNEM  
X-Ray Diagnosis and Treatment  
D. M. ASHLAND, B. S.  
Director of Pathological Laboratory  
B. J. LONG, Manager  
807 Broadway FARGO, N. D.

**Phi Omega Pi**—Honoring all May birthdays, a dinner was given at the house Monday evening with Miss Louise Munshaw, house mother, as hostess. Marion Addison, Mrs. E. Kelland, and Mrs. H. Thorgrimson, alumnae of Zeta chapter, were guests. Mrs. Dick Warner of Fargo was a special guest at the dinner . . . Helen Engle returned to school duties after two weeks practice teaching at Cas- selton.

**Sigma Phi Delta**—Bill Solga and Buck Senecal pledged Monday . . . Louis Whalen of Langdon was visiting at the house Wednesday . . . Mr. Jessup, traveling secretary for A. S. C. E., Mr. Fitch, and Mr. Foster, president of the local chapter

### Jordre Installed Phi U President

Emma Jordre, junior in home economics, was installed president of Phi Upsilon Omicron last week in Ceres Hall.

Other members assuming office were: Lila Maxson, vice president; Katherine Kilbourne, secretary; Lottie Behrens, historian; Dorothy Mol- land, treasurer; Alice Larson, "Candle" editor.

Following installation refreshments were served. Lois Presler was in charge of general arrangements.

"Physiology has a great deal to learn from the scientific study of the elephant."—Dr. Francis G. Bendict, Carnegie Tech, bewails the unwarranted snubbing of the largest terrestrial mammal.

of A. S. C. E. were dinner guests Monday.

**Phi Mu**—Ruth Pinkham is in charge at a Mother's Day tea in the chapter rooms Sunday afternoon. Table appointments will be rose and white . . . Mrs. F. A. Rinkel of Thief River Falls, Minn., visited her daughter Blanche last week . . . Cathryn Ray will spend Friday in Hope, judging the Steele County declamation contest . . . Doris Stinson and Virginia Crust will spend this week-end in Pembina . . . Blanche Rinkel will go home to Thief River Falls for the week-end.

### COMMUNITY PLAY CLASSES WILL PRESENT PROGRAM

A typical community program will be presented in the Log Cabin Tues- day evening at 8:00 p. m. by the classes in community programs and play production. A charge of ten cents will be made for all who at- tend.

The following program has been arranged: vocal solo, Marjorie Ar- nold; address, Arvin Hoge; athletic demonstration, Barney Kelly, Del- mar Skow, and Leo Gerteis; "The Silent System", Jennie Barton and Steve Ward; fairs and exhibits, Ar- thur Hehr and Orville McLaughlin; banjo solo, Roald Peterson; "Bread", Marjorie Huey, Georgina McMullen, Clara Giles, Mercedes Morris, James Kent, and Arthur Hehr.

"Higher education in the United States from 1920 to 1930 was a pretty sloppy kind of affair," according to Dr. Stephen Duggan, director of the Institute of International Education, who ought to know.

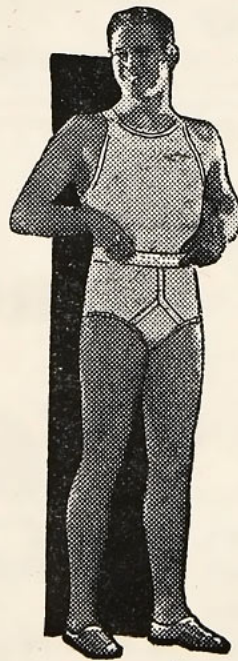
### Dance Programs

We can give you suggestions for novel and attractive Programs and Folders.

### Knight Printing Co.

619 N. P. Ave. Phone 602

### The WHOLE TOWN'S TALKING



Jockey Shorts with Y-FRONT OPENING

A product of Coopers

The most popular men's undergarment in America is now offered in 1936 model. Y-Front construction provides no-gap fly. Greater convenience, milder support.

Get yours today. Enjoy the restful buoyancy.

priced at

50c

de Lendrecie Co.

### Store Your Fur Coats in...

# HOENCK'S

## Dry Cold Fireproof Vaults

And Be Relieved of All Worries.

\$3.00 For Northern Seal Coats and All Sport Wear Fur Coats.

\$4.00 For Hudson Seals, Beavers, Minks, Etc.

### Plan to Attend the...

# SENIOR BALL

Friday, May 15

Music by Everett Perrin

FIELD HOUSE

Dancing 9-1

Price \$1.50

### SUMMER TERM....

The summer term at the Interstate Business College opens Monday, June 1st; the summer review term, June 15th. Students who start a course in June graduate three months ahead of the crowd who start in the fall. Those who graduate first have the choice of the best positions.

Plan your course in business training now. For information phone 1099 or write to the

INTERSTATE BUSINESS COLLEGE  
FARGO, NORTH DAKOTA

### Fairmont's Better Food PRODUCTS

... ALWAYS THE STUDENT'S CHOICE ...

Milk, Cream, Butter, Ice Cream, Poultry, Eggs, Frozen Fruit, Cottage Cheese, Frozen Sea Fish, American Brick and Pimento Cheese

We particularly cater to School Parties and Socials for Panches, CALL US FOR INFORMATION — PHONE 730  
Frappes and Orangeade Inclusive—Free Delivery Service



## National Officers To Attend Meet

(Continued from Page One)  
noon with over 100 from the three chapters expected to attend.

A sports program and conferences will occupy delegates Saturday morning and afternoon, and a dance in the Country Club will follow the banquet, at which time presidents of the three chapters will speak in addition to the national officers. Fred Heisel, president of Epsilon Delta chapter of NDSC, will act as toastmaster, and Robert Kunkel of the Delta Nu chapter of the University of North Dakota, and R. E. Baker of Minnesota will talk.

Sunday a model initiation will be conducted by Gamm Nu of the U. of Minnesota, with candidates from the three chapters being initiated. Tom Donovan and Bill Gallagher from Epsilon Delta will be initiated.

The conclave will close with a dinner Sunday noon.

**Kappa Sigma Chi**—Walter Crane was initiated into the active chapter . . . Russell Anderson will spend the week-end in Litchville, and Ed Pfau in Jamestown . . . Harry Graves was in Cavalier last week-end, and Leo Dahl, in Grafton . . . Thomas King '34 visited the house over the week-end.

## Bison Distribution Is Begun Today

(Continued from Page One)

The color scheme is done in a light and dark shade of blue. The scenic section has been stippled, giving a hazy, but beautiful effect. The cover is blue and silver with a figure of a bison the center of the design. Just inside the cover is a two-page sketch of the campus drawn from a position on the steps of the library.

An important change in this year's annual is the division of the classes section into senior and undergraduate sections. Printed ads will be used instead of the pictorial scheme followed in previous annuals.

Members of the editorial staff include Lucille Clark, Paul Boleyn, Walter Ulmer, Elizabeth Dewey, and Lennea Frisk, associate editors, Evelyn Wattam, Rose Cray, Ralph Smith, David Taylor, Ruth Schmi-erer, Mildred Peterson, Mercedes Morris, Mildred Hommel, Jeanne Verne, John Raymond, and Robert McCracken, departmental editors; and Helen Bonde, Georgia Cook, Betty Christianson, Marjorie Danielson, Adeline Hoge, Zita Horgan, Lois Mansfield, Gerard Matze, Marjorie Pederson, Eloise Pfeffer, Frances Probst, and Constance Taylor, assistants.

Members of the business staff include Maurice Benidt, assistant business manager; Leslie Morgan and Frances Johnson, advertising and cut sales managers; and Vinnie Olson, Archie Seebart, and Jean Crowley, assistants.



Look for the Sign of the Elf  
**Oxford Club**

East end of the South Bridge  
MOORHEAD  
Phone 48 Lots of Parking  
ED. LODGARD, Mgr.

## Loomis & Loomis DRY CLEANERS

Fur Cleaning Rug Cleaning  
Phone 164  
110 9th Street S. FARGO, N. D.

## PI GAMMA MU INITIATES 10 STUDENTS, 7 TEACHERS

Ten NDSC students and seven instructors were initiated into Pi Gamma Mu, honorary education fraternity, at a banquet held at the Waldorf hotel Wednesday.

The students initiated are Phyllis Coyne, Thomas Ensor, Neil McCabe, Sara Minard, Donald Nelson, Ethel Olson, Gertrude Powers, Donald Scott, Ralph Smith and Esther Vig.

Faculty members inducted were Ruby Grimes, Earl Helgeson, Warren Keck, Wm. Kluender, Glenn Lawritson, Vivian Luther, Delaphine Rosa, and C. W. Tebau.

## Judge Harris Will Address Assembly

Judge J. D. Harris of Bismarck, president of the board of administration, will address students of North Dakota State college at convocation Monday at 9:40 a. m.

During his stay here, Judge Harris will be a guest of the NDSC Farmers Union local. He will speak to them at a luncheon meeting, Monday in Ceres hall cafeteria.

Lawrence Fine, new president of the Farmers Union local, will preside at the luncheon meeting. Other recently-elected Farmers Union officers are Marion Hokenson, vice-president, and Roald Peterson, secretary.

## Ethel Olson Is WAA President

Newly elected officers for WAA are: president, Ethel Olson; recording secretary, Grace Grutle; treasurer, Mary Fay Wenger; corresponding secretary, Jordis Lovik; soccer manager, Ruth Bockwoldt; basketball manager, Ruth Snyder; baseball manager, Emma Jordre; rifle team manager, Sylvia Finsand; and minor sports, Cloyce Hocking.

Olive Murchie's junior-senior baseball team won the inter-class tournament this week from Ruth Snyder's freshman-sophomore team. Members of the winning team were Ethel Olson, Mary Fay Wenger, Lottie Behrens, Emma Jordre, Olive Murchie, Grace Grutle, Marjorie Smith, Elaine Hostler, and Rocelia Rud.

The captains and the manager chose the varsity team, composed of Ethel Olson, Ruth Snyder, Sylvia Finsand, Verda Van Vorst, Emma Jordre, Rocelia Rud, Ruth Bockwoldt, Lottie Behrens, Hjordis Lovik, and Olive Murchie.

## THETA CHI'S ELECT HOGOBOOM

At a meeting held last week Dale Hogoboom was elected president of Theta Chi fraternity. Ward Swanson who was re-elected president last month tendered his resignation due to the fact that he will not be attending NDSC next year.

## We Treat the Feet ...



Most people have foot troubles which a chiropodist can correct. Why suffer then from aching feet?

We offer a complete chiropody service—treating corns, bunions, callouses, ingrown nails, fallen arches, and other foot ailments.

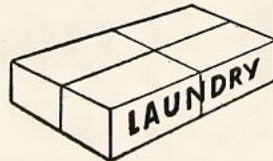
## DR. ANNA LINDSOE

CHIROPODIST

Phone 1026

304 Black Building.

## Ship Home by and save Loose Change



Railway Express can handle laundry packages for you very easily and economically. Simply notify the folks that you are shipping your laundry by Railway Express and ask them to return it the same way. If you wish, you can ship "collect." It saves time and detail, and loose change.

Railway Express is fast and dependable and can be relied upon to get your laundry back as fresh and in as good condition as when it left home. So think the idea over and telephone Railway Express. Our motor truck will pick up the package at your door at no extra charge.

For service or information telephone

Railway Express Agency, Inc., N.P. Depot, 701 Front St. Phone 103.  
Depot Office: G. N. Depot. Phone 105. Fargo, N. D.

## RAILWAY EXPRESS AGENCY INC.

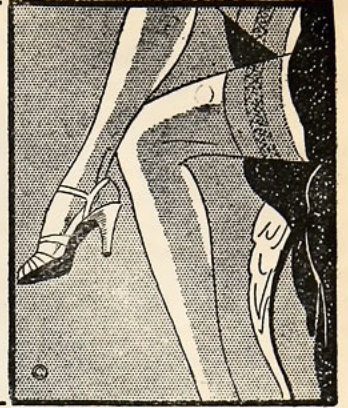
NATION-WIDE RAIL-AIR SERVICE

## LIFE GUARDS Silk Hose

A revelation in women's full fashioned silk hose. Stretch top Garter guards. All new Spring shades.

Introductory price

89¢



S&L COMPANY

## LUGGAGE....

## Graduation Gifts

FOR THE LADIES	FOR THE MEN
Wardrobe Cases \$6.75 to \$25.00	Gladstones.....\$6.75 to \$22.00
Overnight Cases \$4.50 to \$10.00	Bags.....\$2.50 to \$10.00
Fitted Cases.....\$10.00 to \$35.00	Val-a-paks.....\$5.00 to \$19.50
New Canvas Sets, two pieces matched \$14.75, \$22.50, \$35.00	Pullman Wardrobes.....\$10.75 to \$20.00
	Shaving Kits.....\$4.50 to \$10.00

Fargo, N. D.

MONSON'S LUGGAGE'S

618 Front St.,

## PENNEY'S



Finer Fabrics

- styled correctly
- tailored perfectly

## TOWN CLAD SUITS

\$19.75 • DUNBURY WORSTEDS  
• DUNBURY TWISTS

The season's popular styles in Spring-fashioned fabrics by Town Clad! Newest shades and patterns . . . smartest established styles . . . tailoring that assures fit and service!

Models designed to suit your individual likes . . . colors in line with your preference . . . at a price you like to pay!

Kent, illustrated, approved by men demanding formal informality. Double breasted, full shoulders, trim lines.



## SPECTRUM SPORT SPECULATIONS

Now we learn that our Bob Saunders is also proficient in the great American sport of baseball. Bob has set himself up as quite a pitcher in the Bismarck-Mandan area and not so long ago had an offer to pitch for the baseball club of a Minnesota town. Maybe we do need a varsity nine after all.

With about a dozen entrants in both classes, the Gamma Tau Sigma tennis tourney gives promise of being the best ever, this year. The girls especially seem to be the most ardent fans and while we don't know of any prospective Helen Moody's on the campus we have been told that there are some mighty fine clouters of the white pellet. If they get some outstanding racketeers maybe it might be a good idea to match the female champion against the top-notch player in the men's bracket.

About every three years some athlete comes to school at State college unheralded and unsung and then steps out on the field and comes through to outshine and outplay the high school greats who have been sought after by energetic athletic coaches. A good example of this was Merlin Jahr who was one of the finest linemen ever to pull on a pair of moleskins for the Bison. Onene McCarthy may be another one of such a group if his performance in the Yellow and Green game last Wednesday is any indication of his usual calibre of play. The great difficulty with this particular case is that McCarthy is not eligible to compete this fall because he entered school in the winter term so does not meet the North Central conference rulings on this point. Playing on the Green team Mac took over the signal calling job with a verve that startled even Finnegan. A powerful driver, Mac is the kind of back that Reiners was, reveling in the tough jobs which fall to a Bison signal caller—backing up the line and clearing the path for Herd ball carriers.

Erickson, Bill Olson, Norm Olson, Ernie Wheeler, Emil May, Carl Rorvig, Wes Phillips, and Wayne Springer. That's a list of backs that would warm the cockles of any coach's heart. Is there any reason why Finnegan and Lowe shouldn't predict the best backfield they've had for quite some seasons? Of course there's the injury jinx to contend with and already it seems to have taken a bit of hold on the squad principally in the persons of Rorvig and Norm Olson. Olson is expected to be ready in a few weeks but Rorvig is rather a question mark.

# GREEN AND YELLOW PLAY 6-6 DEADLOCK

## Backs Display Speed, Drive In Spring Classic

### Guards, Ends Show to Advantage; Backs Display Lots Of Drive and Polish

In the annual spring football classic which winds up the spring practice sessions, the Yellow and the Green squads battled sixty minutes to a 6-6 deadlock. Coaches Finnegan and Lowe were highly pleased with the performances of their charges and are unreserved in their opinion that they may have one of the best backfields in years, but can't say so much for their line.

The starting line-ups for the two teams are as follows: Green—Pollock, center; Oliver and Laavig, guards; Welch and Schraback, tackles; Frederick and Hawkins, ends; fullback, Kelley; May and Darch, halfbacks; McCarthy, quarterback. The Yellow team lined up like this: Jim On, center; Holt and McClure, guards; Napravnick and L. Olson, tackles; Welles and Bowers, ends; Erickson, fullback; Wheeler and Bill Olson, halfbacks; and Springer, quarterback.

Lettermen from last year held their own with the newcomers with stars such as Bob Erickson and Emil May coming through with their usual and expected play. Erickson is hitting the line harder than ever while May cut loose with two spectacular runs while displaying a bang-up game on defense. Wayne Springer showed his versatility when he was transferred to the quarterback post from his regular guard position and with the exception of one mistake, called the signals with surprising ease. Ernie Wheeler flashed the stuff that made him one of the best backs in high school and should be able to land on that first line of backfield men.

With Pollock and Jim On both exhibiting plenty of drive the pivot position seems to be well fortified. It was Pollock who scored the only points for the Green team when he intercepted a pass and sprinted over the double marker. With three watch charm guards, even smaller than the ones of the past two years, Finnegan and Lowe are still well satisfied as Oliver, Laavig, and Holt belted through the line and spilled tacklers with the best of them. On the flanks it looks as if Hawkins and Fredericks are going to make it tough for opposing backs to skirt the ends.

The soft spot in the Bison forward wall seems to be at the tackle posts

(Continued to Page 6)

## GTS Tennis Clash To Open Next Week

Starting the annual tennis tourney, Gamma Tau Sigma has announced that the opening date of the tiff is next Tuesday. The contest will be under the charge of Dave Taylor. Entrants in the tournament will include any bona fide men or women students of the college.

Entrance blanks are to be deposited in a box provided for that purpose in the Spectrum office. Entrants in the affair will be required to pay an entrance fee of twenty-five cents to defer the cost of balls used in the competition.

The scope of the tournament will be enlarged this year to include both men's and women's singles and doubles events. Another added feature of the set-to will be the mixed doubles arrangement.

The preliminaries of the match will be played in the court set up in the field house and the remainder of the tourney is to take place in the outdoor courts which are to be in shape by that time.

The men's and women's preliminaries will be run on alternating afternoons starting with the men's division on the first day.

Trophies will be awarded in all classes, the men's being offered by the athletic department and the remainder will be donated by the business men of the city.

Three University of Georgia students called King Edward VIII the other day to tell him about an athletic contest. His Majesty wasn't at home, and the bill was \$75.

## Athletes Begin Festival Meet This Afternoon

With the weather fair and at least fourteen schools entered in the athletic contests, the annual May Festival for high school athletes will get under way this afternoon. The preliminaries will be run off this afternoon and tomorrow morning, with the finals in all events scheduled for Saturday afternoon.

The cinder track is in fine condition and records which have been standing for as long as the past twelve years will be in danger when the prep stars begin their assault. During the past week the entire track has been recinded with the result that it will afford better conditions for running than have been available during the past few years.

The list of events and their record-holders are as follows: 100 yard dash, 10 1-5 by Robertson of Ellendale in 1927; 220 yard dash, 23 sec. by Robertson of Ellendale, 1927; 440 yard dash, 52.5 by Green of Bismarck, 1932; 880 yard run, 2:7 by Aldrich of Hankinson, 1927; Mile run, 4:49 2-5 by Randall of Mandan in 1932; 120 yard hurdles, 16 4-5, by Fuller of Fargo in 1924; 220 yard hurdles, 26 3-5 by Powlison of Fargo in 1925; Half Mile Relay, 1:36 held by Ellendale, 1927; Pole Vault, 12 ft. 1 1-2 in. by Murphy of Bismarck, 1932; Shot Put, 48 ft 1 in. by Shannon of Valley City in 1930; Discus, 128 ft. 9 in. by Meinhover of Bismarck, 1930; High Jump, 5 ft. 9 1-8

(Continued on Page Six)

## Theta Chis, Gamma Rhos Lead Field In Kittenball Race

Two upsets marked the play in the interfraternity kittenball tourney last week with the Dormitory eking out an 8 to 7 win over the Kappa Psi's and the Kappa Sigma Chi's wiping the field with the Sigma Deltas by the overwhelming count of 14-1.

In the Kappa Sigma Chi win, Ted Whalen seemed to lose control of the situation, which is a rare thing for him as he is generally conceded to be one of the finest pitchers in the loop. The Theta Chi's chalked up their third win of the season when they downed the Sigma Chi club 19-4 while the SAE's beat out the Delta Tau Epsilons 7 to 5. Art Skurdahl turned in the pitching performance of the season when he shut out the Dormitory club 25-0, allowing but one hit and striking out 17 batters.

Kappa Sigma Chi boosted their percentage by tripping up the Kappa Psi's 8-3, while the Delta Tau's whipped the hapless Sigma Chi's 14-6. ATO and SAE battled in a close contest with the ATO's coming out on the long end of the score by a 7-5 count. Two other close games were played as the Gamma

(Continued on Page Six)

**Model Laundry**  
It's Phone 4  
Laundry & Dry Cleaning

## The only machine of its kind

500 camshafts can be inspected every hour by an automatic machine which has been designed and built by the Ford Motor Company. It is the only one of its kind. It has a gaging accuracy of one ten-thousandth of an inch.

It gages Ford camshafts at 25 points. Any dimension not within the specified limits causes electrical and mechanical devices to reject the camshaft as it leaves the machine.

There are ten inspection stations. The camshafts are placed in registered position in carriers mounted on an endless linked conveyor and carried into the machine. At each station the conveyor stops momentarily. Automatic centers engage the ends of the camshafts and hold them rigidly. Then 25 floating gage

heads lower automatically, measure the shafts, then rise. As the conveyor moves the shafts to the next station, other mechanism rotates and indexes them for the next set of gage heads.

The gage heads contain hard-alloy-tipped measuring plungers which are linked to amplifying levers. Variations in shaft sizes, beyond set limits, close a set of contact points which operate two solenoids. One sets the rejection mechanism; the other raises a marking plunger which puts a daub of copper sulphate solution on the shaft where the dimension is over or under size.

When shafts come out of machine they are automatically passed or rejected. All told, there are 54 inspections on every Ford V-8 camshaft.

F O R D M O T O R C O M P A N Y



# W. W. Wallwork



You can buy a New Ford V-8 for as little as \$25 a month.

Moorhead - Minnesota



## Complete Plans For Senior Prom

(Continued from Page 1)

Quinnald; Sigma Alpha Epsilon, Lynn Fredrikson; Sigma Chi, Sam Dobervich; Sigma Phi Delta, Walter Norby; Theta Chi, Beverly Hill. There will also be salesmen in the men's residence hall. Tickets will cost \$1.50.

As announced by Gertrude Powers, in charge of invitations, honor guests will be: Governor and Mrs. Walter E. Welford, President and Mrs. J. H. Shepperd, Mayor and Mrs. F. O. Olson, Deans and Mmes. L. L. Carrick, H. L. Walster, A. D. Weeks, A. E. Minard, W. F. Sudro, R. M. Dolve, I. W. Smith; Alba Bales and Pearl Dinan, Dr. and Mrs. C. S. Putnam, Dr. and Mrs. E. H. Tyner, Mr. and Mrs. A. H. Parrott, Mr. and Mrs. C. C. Finnegan, Mr. John Wykoff, Miss D. G. Rosa, Col. and Mrs. J. D. Easton, Maj. and Mrs. R. B. Ennis, Capt. and Mrs. A. J. Tagliabue, and Capt. and Mrs. H. J. McChrystal.

## BISON TRACKMEN PLACE IN MEET AT SIOUX FALLS

A detachment of four track stars from North Dakota State journeyed to Sioux Falls, South Dakota last week-end where they entered the Dakota relays. Three of them placed in their respective events while Emil May was disqualified in his best event, the one hundred yard dash.

Neville Reiners and Hollis Dietz placed third and second respectively in the shot put while Sam Westgate managed to secure a third position in the javelin throw.

## FOSTER ELECTED TO HEAD C. E. ORGANIZATION

Richard Foster was elected president of the American Society of Civil Engineers at a meeting of the group held last Monday. He replaces William Kneeland. Other officers elected are Edwin Wheeler, vice president, and Theodore Whalen, secretary-treasurer. Mr. Jessup of the traveling field section of the society, was the principal speaker.

**DAKOTA PHOTO ENGRAVING CO.**  
ILLUSTRATORS DESIGNERS  
ENGRAVERS LITHO PLATE MAKERS  
FARGO, NO. DAK.



The Easiest Way to Earn Money is to Save it.

We invite you to Save with this 43-year old institution — which has built up a Reserve Fund of \$238,000.00 to protect you from any possible loss.

Call, or write for our Savings Plans.

**N. W. MUTUAL SAVINGS AND LOAN ASSOCIATION**  
11 Broadway, FARGO, N. D.

## LUTHERAN STUDENTS TO PICNIC AT OAK GROVE PARK

The Lutheran Student association will have a picnic in Oak Grove, Sunday. All those planning to come will meet in the college YMCA at 4 p. m. Arwin Hoge and Earl Sulerud are in charge of arrangements.

Six NDSC Lutheran students will spend the week-end at Grand Forks as delegates to the Luther League conference there. Those attending are June Aasheim, Marion Hokenson, Phil Garberg, Adeline Hoge, Ethel Botman, and Wilbur Benson. Other students are planning to drive up Sunday.

## ENGINEERS HOLD OPEN HOUSE TODAY

The engineering department is holding its annual open house today, with exhibits portraying the recent advances in the different fields of engineering featured. Kenneth Brandby, senior in electrical engineering, is manager of the exhibition.

A racing car built and designed by Edwin Schunke is the principal feature of the mechanical engineering exhibit. Other items being shown today are a bicycle radio built by Edward Herds, an oscillograph which interprets sound waves visually, a stroboscope which makes objects spinning at high speeds appear to be moving slowly, a singing arc, a rotary steam engine, a Tesla coil, and others.

The history of light from the first oil bowl to the modern electric lamp will be shown in a series of model lamps. Bridge design reports will also be on display.

Assisting Brandby are Gus Gerlitz, Ralph Rauch, Earl Martinson, and Lewis Odland.

Initiation into Scabbard and Blade was held for eight men Saturday night at the Waldorf hotel before the annual formal dinner-dance.

Admitted were Bill Breitenbach, Robert Larson, Al Lee, Jack Cook, Jack Reidesel, Maynard Nesvig, Robert Knauer and Ward Redmond.

## KIRK GIVES TALK

Supt. H. H. Kirk of the Fargo city schools spoke on "The Interpretation of the Schools to the Public—The Need of Educational Publicity" before the class in educational relations yesterday in Science 215.

## INSTALL STUDENT OFFICERS

Installation of the new student commission was held Tuesday night at the Graver hotel at 6:30 p. m.

Walter McGrath, ex-president, introduced the new commission members and the old commission explained their respective duties. Miss Ann Brown and Mr. Homer B. Huntoon were special guests.

## THETA CHI'S, GAMMA RHO'S LEAD KITTENBALL TOURNNEY

(Continued from Page Five)

Rho's kept their clean slate with a 3-2 win over Kappa Sigma Chi, and the Sigma Phi Deltas eked out a 4-3 win over the Kappa Psi's.

There are eight games left to be played and these will be run off next week with the baseball tourney scheduled to closely follow the finish of the kittenball tourney.

Team standings are as follows:

Upper Bracket			
	W.	L.	Pct.
Theta Chi	3	0	1.000
Sigma Alpha Epsilon	2	1	.667
Alpha Tau Omega	1	1	.500
Delta Tau Epsilon	1	1	.500
Sigma Chi	0	3	.000
Lower Bracket			
	W.	L.	Pct.
Gamma Rho	2	0	1.000
Kappa Sigma Chi	2	1	.667
Dormitory	1	1	.500
Sigma Phi Delta	1	1	.500
Kappa Psi	0	3	.000

Prompt Courteous Attention to Your Banking Requirements

**The Fargo National Bank**

52 Broadway FARGO, N. D.

## THREE MORE FAVORITES

Banana Sensation, Butterscotch Nut and Raspberry Sherbet.

(Have been added to the many Refreshing flavors of



Dixie Cups and Ice Cream Bars available at **A. C. Bookstore**

**Your Entertainment.... Where to Go.**

Watch the Ads in

**THE FARGO FORUM**

Get an Early Start with.....

**Your Building Program**

We carry the best in all Building Materials.

**Interior Lumber Company**

Phone 838 or 839

"WE BOOST THE BISON AT ALL TIMES"

## Festival To Begin Friday Afternoon

(Continued from Page Five)

in. by Swartz of Bismarck, 1929; Broad Jump, 21 ft. 1 3-4 in. by Fait of Valley City, 1932; Javelin, 169 ft. 11 in. by Orville Fisher, 1934.

It was originally planned to have a dual meet with the University of Grand Forks to be held in conjunction with the May Festival but because of a previous engagement with Macalester college the Nodaks were forced to call the deal off.

## Spring Football Game Gives Fine Outlook

(Continued from Page Five)

where the men just don't seem to measure up to the standards of past seasons. While this is a tough assignment with such giants as Dobervich, Meyers, and Schoenfelder held up as examples, there is going to have to be an awful lot of work done before that post will be able to measure up to the remainder of the line. Welch looked good at times and

should be able to hold his own, but other candidates need more experience before they can handle this assignment.

## Professional Directory

**DR. E. M. WATSON**  
Physician and Surgeon  
Third Floor Edwards Bldg. Phone 926W & R

**DR. N. J. BARNES, M. D.**  
Medicine, Surgery, Child Diseases  
55 1/2 Broadway Office and Res. 1620

**DR. M. V. ASKANASE, Dentist**  
Suite 409 — Phone 1304  
New Black Bldg. Fargo, N. D.

**DRS. SHERDAHL'S, Optometrists**  
C. A. Sherdahl and C. G. Sherdahl  
805 Black Bldg. Fargo, N. D.

**DR. MELVIN O. LOFTHUS**  
Chiropracist—Foot Specialist  
Merchants Nat'l Bank Bldg. — Phone 1046

**FARGO GENERAL HEALTH SERVICE**  
Drugless Methods—Phone 252  
Dr. H. H. Werre, D.C. 60 1/2 Bdwy.

**DRS. HENNING & BURSACK**  
Non-Med. Optometry & Naturopathy  
Phone 5485 411-414 Black Bldg.

## THREE CHEERS

... FOR THE ...

**YELLOW and the GREEN**

Now obtainable in Leather and Wool Jackets at the....

*Esquire*  
THE SHOP FOR MEN

B-4-U-Step out--Step into Esquire

JOIN THE CROWD AT....

**W. H. Diemert Cafe**

South Bridge, Moorhead

Before You Buy--Be Fair to Yourself!

See The New **CURLEE Spring Suits**  
**Ted Evanson**

219 BROADWAY

Our Confections Are.....

Wholesome — Fresh — Delicious

**Congress Candy Company**

FARGO, NORTH DAKOTA

**MOTHER**

Deserves a Card on her Day

WE HAVE THEM

**A. C. BOOK STORE**