

Process

- Preliminary Sketches
- Organizational Sketches
- Elevation Development
- Plan Development
- Design Development

Theory

HARM REDUCTION

DEFENSIBLE SPACE THEORY

- UTILIZE CONTROL
- ZONE OF INFLUENCE
- JUXTAPOSITION OF DWELLING
- ADOPTION OF BUILDING FORMS AND IDIOMS

CRIME PREVENTION THROUGH ENVIRONMENTAL DESIGN

- SURVEILLANCE
- ACCESS CONTROL
- MAINTENANCE
- ACTIVITY SUPPORT

project development

context ANALYSIS



# ASSEMBLING

## THE Pieces

sustaining a lifestyle for the mentally ill.

### A DESIGN FOR A MENTAL HEALTH TREATMENT CENTER

#### problem STATEMENT

How can a facility aid in the development of a support system that monitors the chronic mentally ill's health, safety and welfare in an effort to re-enter society and create a diversion from incarceration and homelessness through architectural design?

#### JUSTIFICATION

In 2009 approximately 4,035 people in Hennepin County were homeless ("Number of homeless," 2009). Homelessness can be caused from a multitude of reasons, however, a primary cause are chronic mental illnesses that leave many cycling through the streets and in prisons without proper treatment plans and the necessities to sustain a stable life in our society. Many current treatments facilitate a short term support system leaving the responsibility of maintaining a successful treatment plan after release in the hands of the patient. Many are left without a place to receive consistent monitored treatment resulting in cyclical imprisonment and homelessness.

#### project ELEMENTS

##### clinic

The clinic will be a place where professional consultation and evaluation is provided on a daily basis or as needed. Here treatment plans are developed and maintained to look after the client's health, safety, and welfare.

##### pharmacy

The pharmacy will provide medication on a readily available basis located onsite.

##### office

The offices will provide space for individual research for professional development and studies, while providing space to maintain and process patient records.

##### staff

The staff spaces will provide kitchen and dining rooms, restrooms, conference and preparation rooms and temporary lodging.

##### indoor/outdoor recreation

The facility will contain indoor and outdoor recreation areas, implemented in order to develop a solid community based environment and promote healthy activities.

##### educational

The educational spaces will be designated for rehabilitation and ongoing training sessions staffed by professional and volunteer help.

##### living

The clients will have a place of residency on site that is monitored also by professional and volunteer help. This environment will provide monitored living spaces (ie: dining, sleeping, and social rooms) that promote group and individual development.

#### FOCUS

##### A HEALTHY COMMUNITY BASED ENVIRONMENT

Creating a support system  
Accountability

##### EMERGENCY CARE

People exiting hospitals  
People exiting prisons  
Mental healthcare

##### TRANSITIONAL CARE

Behavioral healthcare  
Primary healthcare  
Employment services  
Mental healthcare





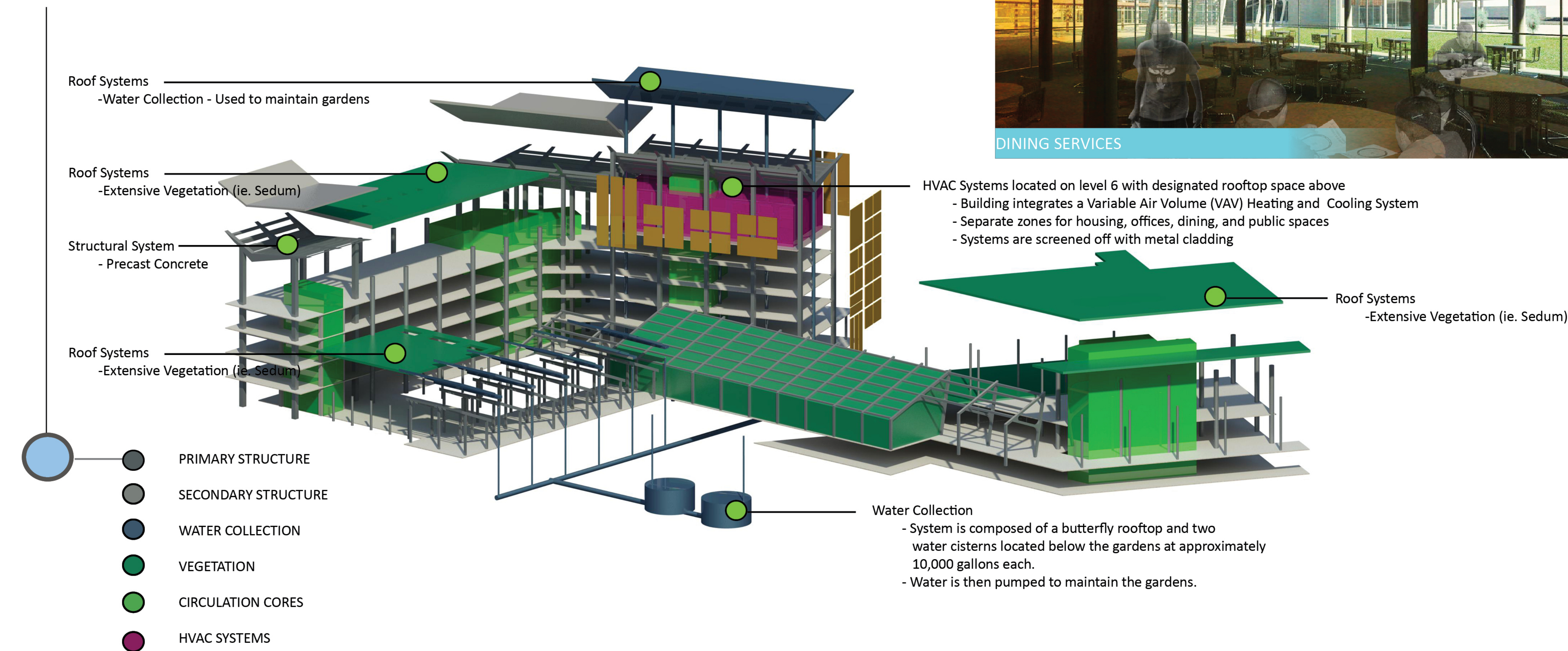


COMMUNITY LIVING ROOM



GREENHOUSE LOOKING EAST

## systems INTEGRATION



DINING SERVICES



CLIENT RESOURCES

## RESOURCES.

- therapy*
  - Community Produce Gardens
  - Greenhouse
  - Social Interaction
- skill development*
  - Technological Resources
  - Job Services
- case management*
  - Individual Counseling
  - Group Counseling
  - Chemical Dependency Programs



## Programming

Ground Level

- 1 West Entry
- 2 Main Circulation Core
- 3 Community Resources
- 4 Professional Offices
- 5 Waiting Room/South Entry
- 6 Pharmacy
- 7 Central Courtyard
- 8 Consultation Rooms
- 9 Greenhouse
- 10 Dining Services
- 11 Waiting Room
- 12 Kitchen
- 13 North Courtyard
- 14 North Entry
- 15 Parking and Utilities Access
- 16 Produce Gardens



First Floor  
1"=30'



Second Floor  
1"=30'

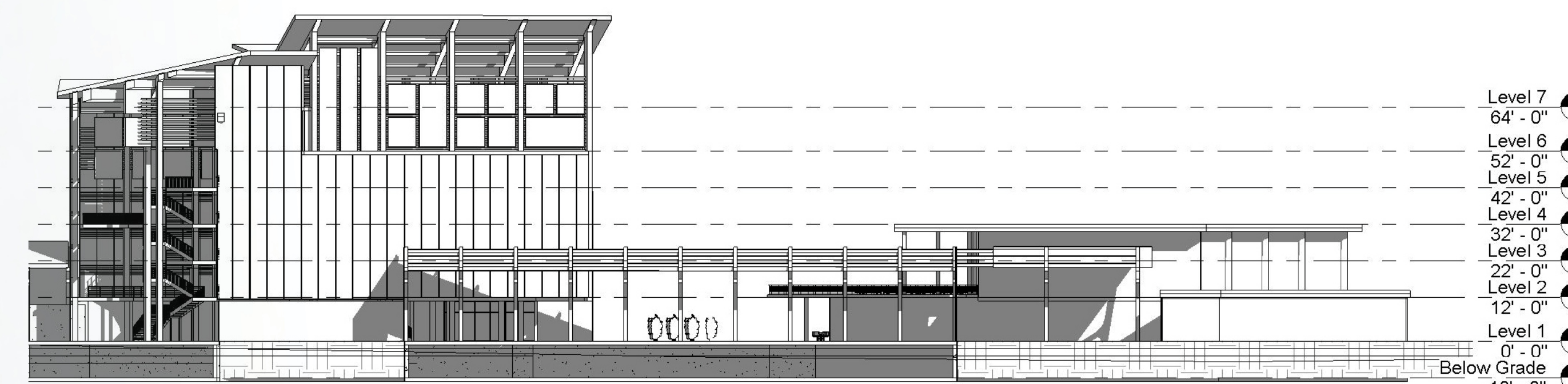
## Programming

Level 2

- 1 Classroom
- 2 Computer/Library Resources
- 3 Study Space
- 4 Atrium
- 5 Housing  
Apartment A  
Apartment B
- 6 Laundry Room
- 7 Living Community Space



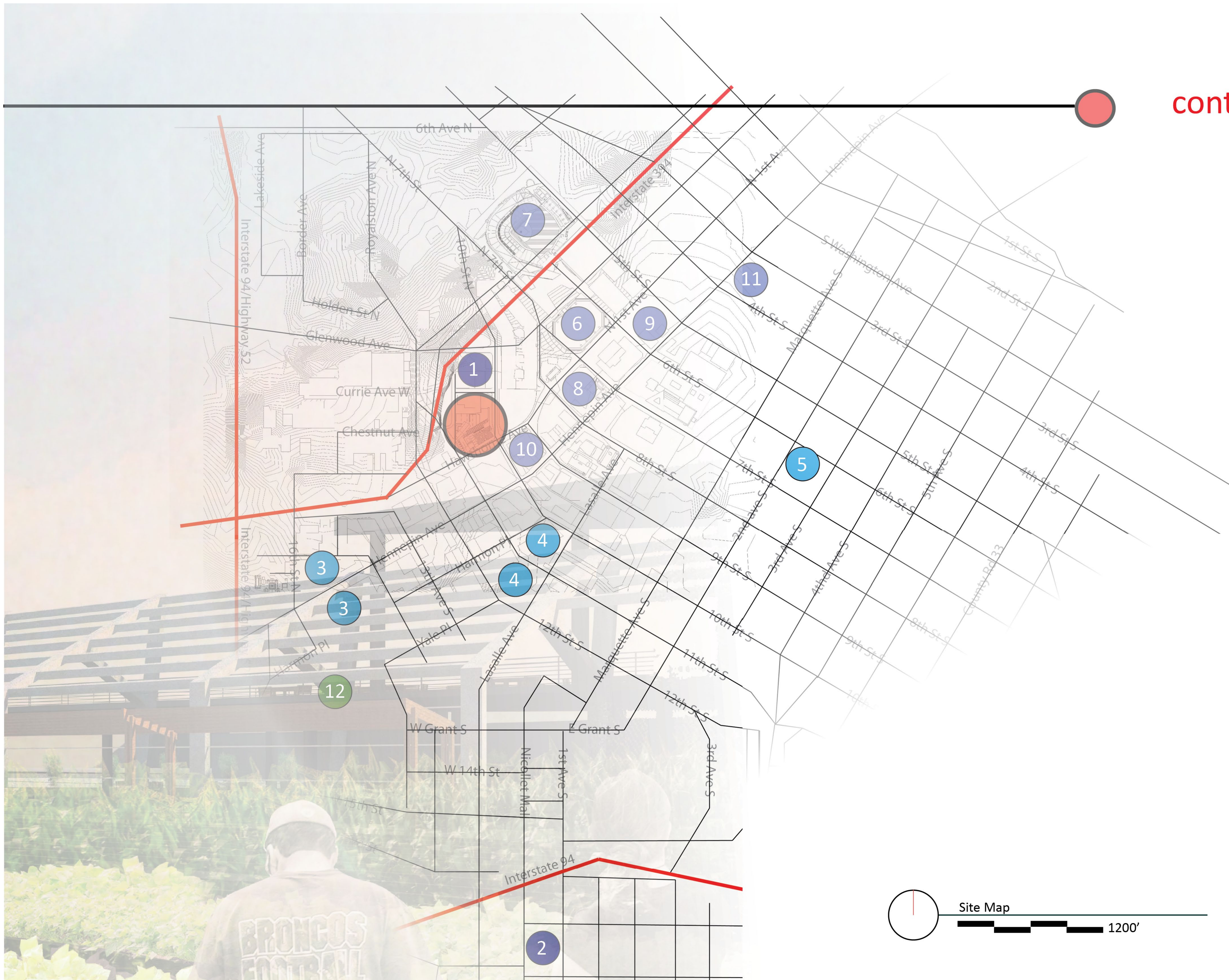
Section A  
1"=30'



Section B  
1"=30'

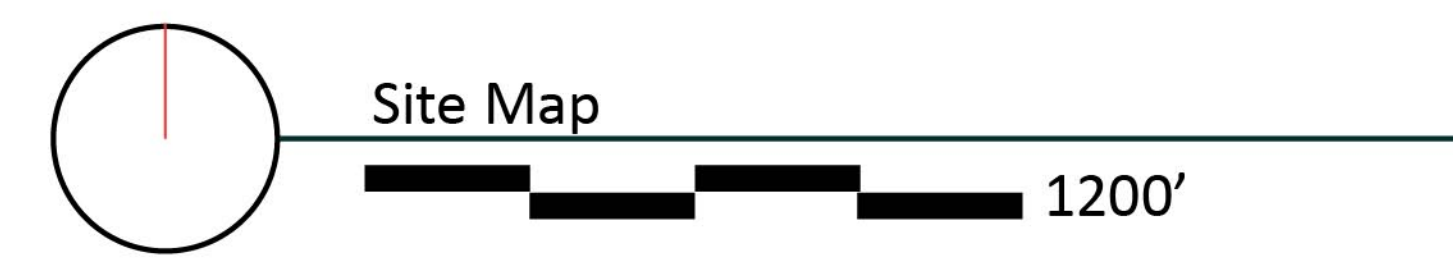


# context ANALYSIS



Local Resources  
 Educational Resources  
 Entertainment District

- 1 Salvation Army
  - Public Nutrition
  - BOLT
    - Spiritual Growth
    - Educational Growth
    - Vocational Growth
  - Technological Resources
  - Housing
    - Emergency
    - Long-Term
  - Beacon Program
    - 12 Step Dependency Program
  - Healthcare
- 2 Groveland Food Shelf
- 3 Minneapolis Comm./Tech. College
- 4 University of St. Thomas
- 5 Capella University
- 6 Target Center
- 7 Target Field
- 8 First Ave.
- 9 Cowles Center for Dance and Performing Arts
- 10 Minneapolis Library
- 11 Orpheum Theatre
- 12 Loring Park







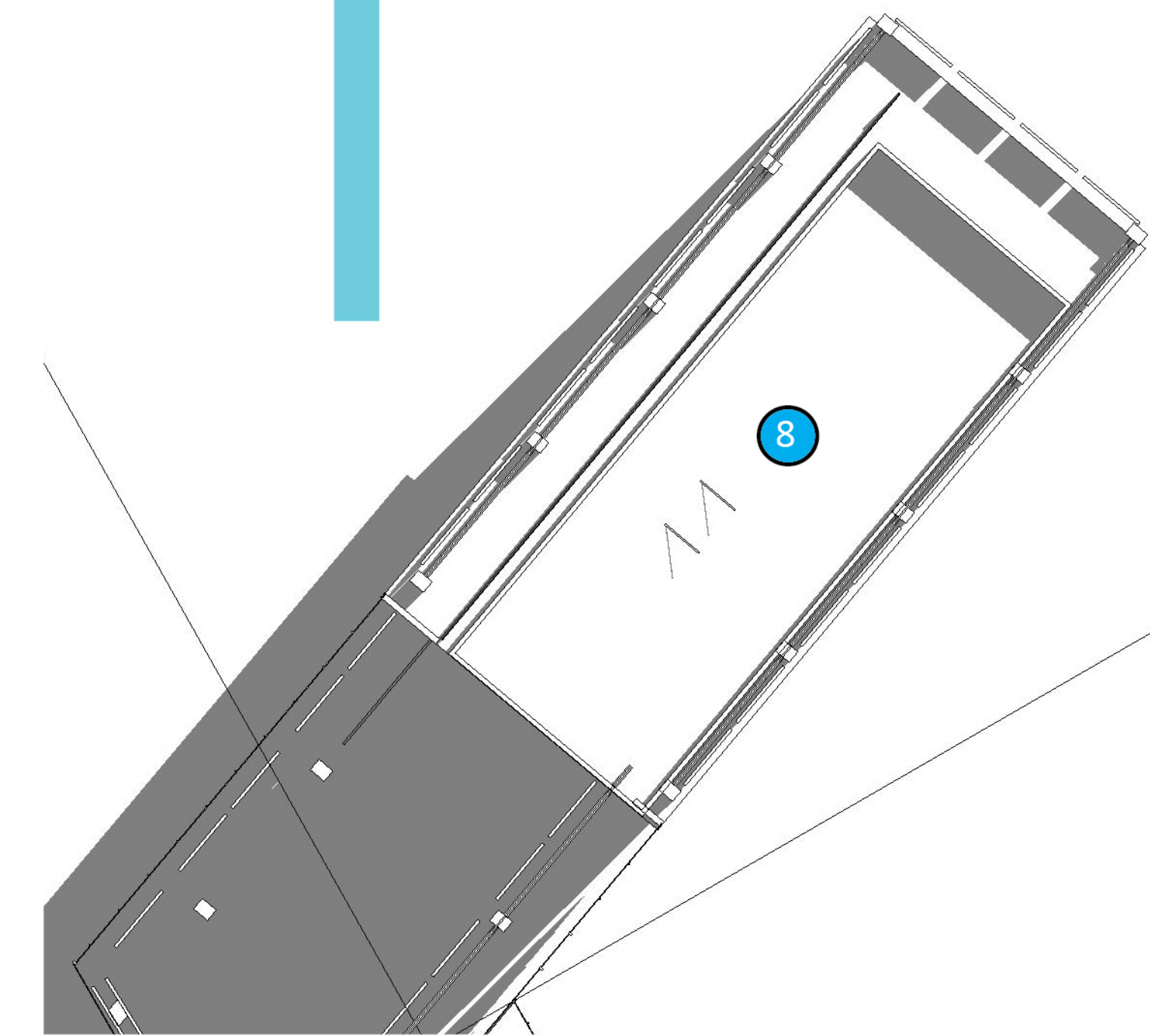
Third Floor  
1/16"=1-0"



Fourth Floor  
1/16"=1-0"



Fifth Floor  
1/16"=1-0"



Sixth Floor  
1/16"=1-0"

### Programming

- Levels 3, 4, 5, 6
- 1 Classroom
  - 2 Computer/Library Resources
  - 3 Study Space
  - 4 Atrium
  - 5 Housing  
Apartment A  
Apartment B
  - 6 Laundry Room
  - 7 Living Community Space
  - 8 Mechanical