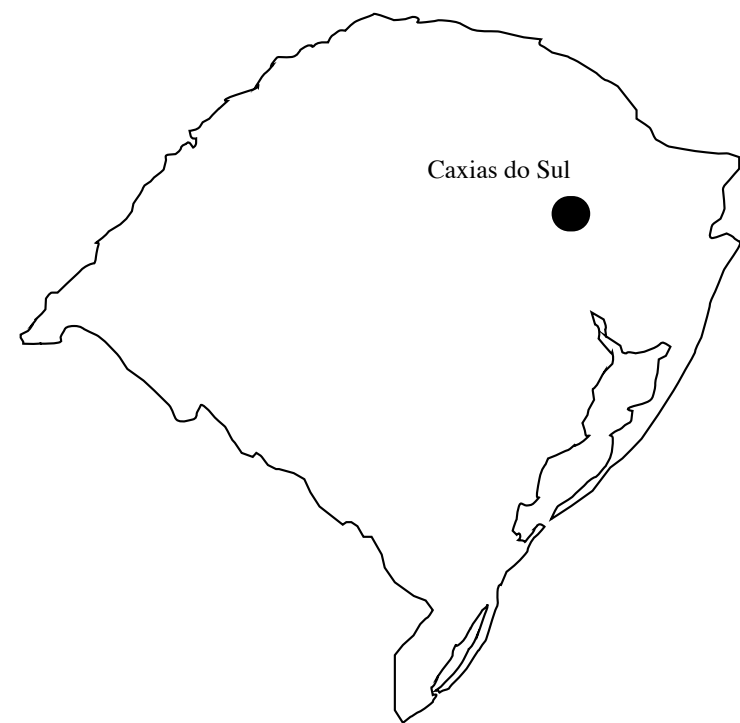
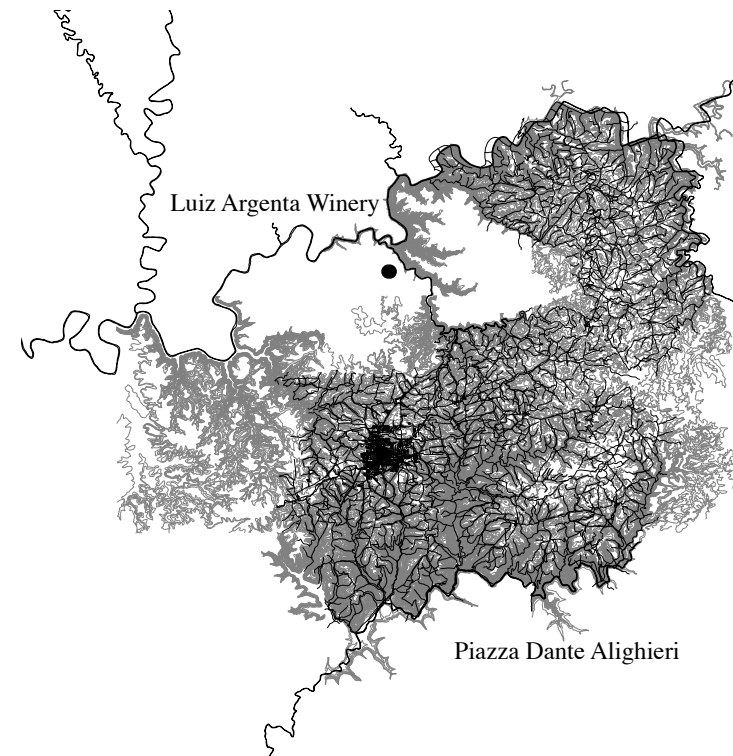




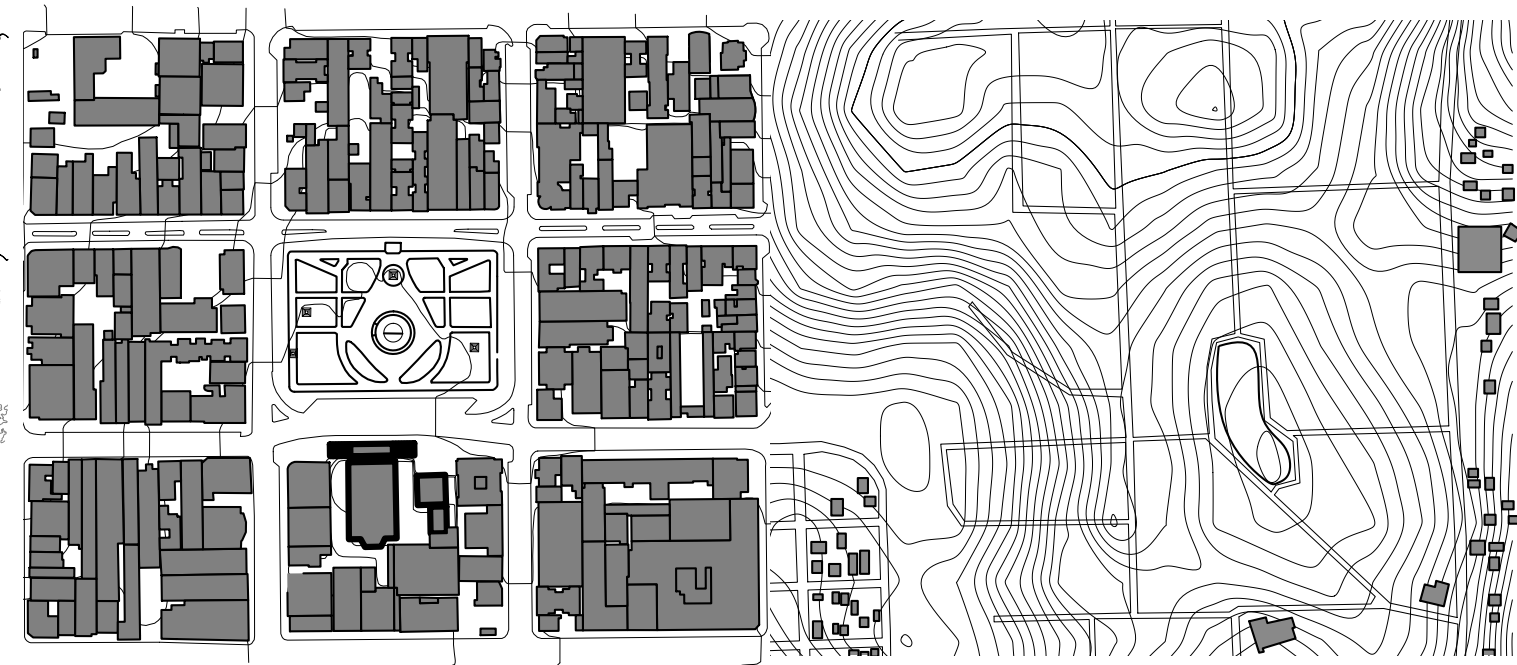
BRAZIL



RIO GRANDE DO SUL

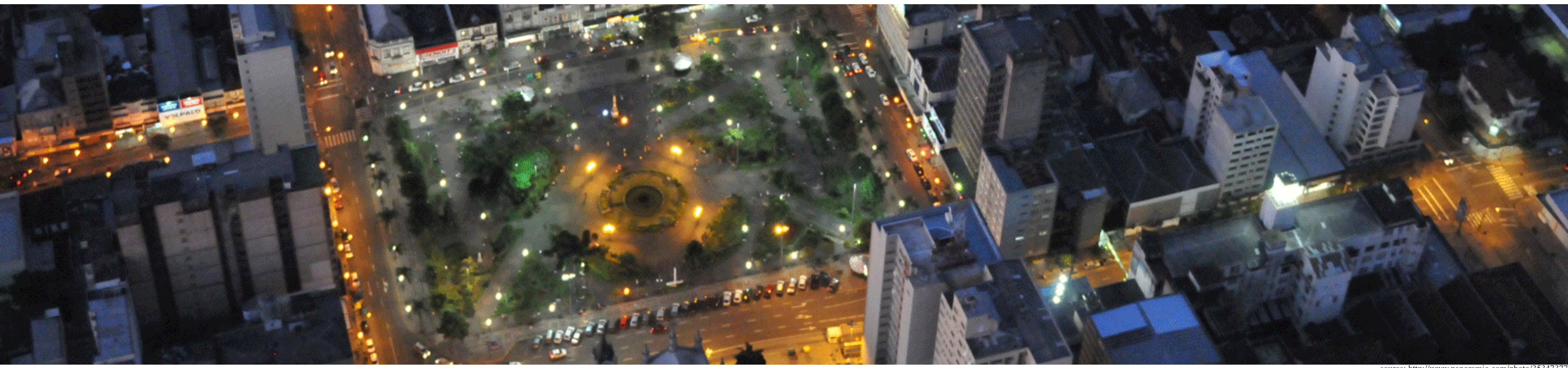


CAXIAS DO SUL

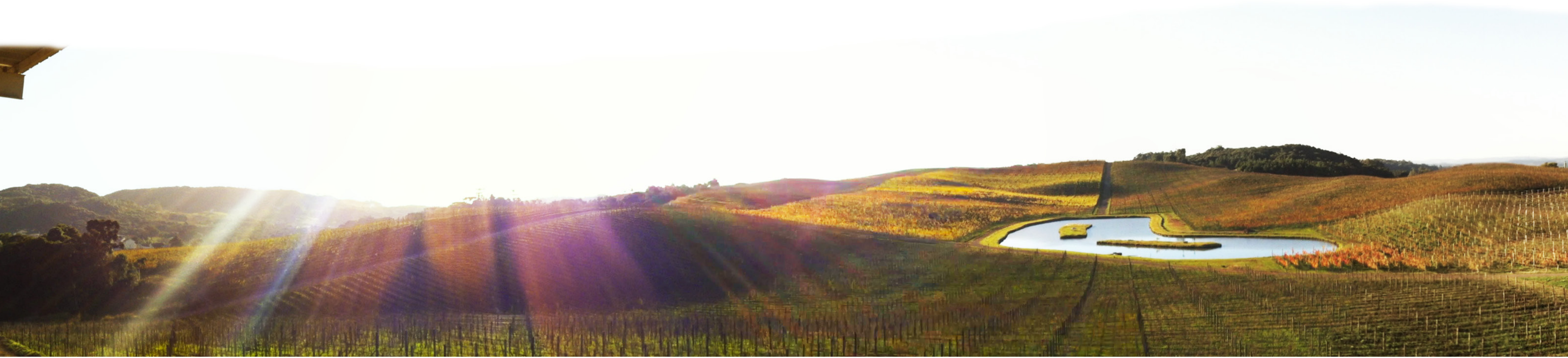


PIAZZA DANTE
ALIGHIERI

LUIZ ARGENTA
WINERY



source: <http://www.panoramio.com/photo/35347377>





source: <http://imageshack.us/i/490/caxzj9.jpg/>



source: http://ronaldofotografia.blogspot.com/2010_09_01_archive.html



source: <http://www.panoramio.com/photo/28214765>



source: <http://www.panoramio.com/photo/3232876?source=wapi&referrer=kh.google.com>



photographer: Nika Ferronato



source: <http://www.flickr.com/photos/8797320@N08/4952477069/>



photographer: Nika Ferronato



source: <http://site.feiradolivrocaxias.com.br/a-feira>



source: <http://g1.globo.com/Noticias/Brasil/>



photographer: Nika Ferronato



source: <http://eyesonbrazil.com/2011/01/20/the-great-grape-festival-of-caxias-do-sul/>



photographer: Nika Ferronato



source: http://www.olorense.com.br/interna_noticias.php?id=2488&secao=6



source: <http://www.luizargenta.com.br/site/>

HOW CAN A BUILDING'S RELATIONSHIP TO ITS SOCIETY
BE INFLUENCED BY A PARAMETRIC STRUCTURE ?



source: http://pt.wikipedia.org/wiki/Ficheiro:Chegada_do_trem_em_Caxias_do_Sul_-_1910.jpg



source: <http://www.defender.org.br/caxias-do-sulrs-tempo-para-relembra/>



source: <http://www.panoramio.com/photo/20573678>



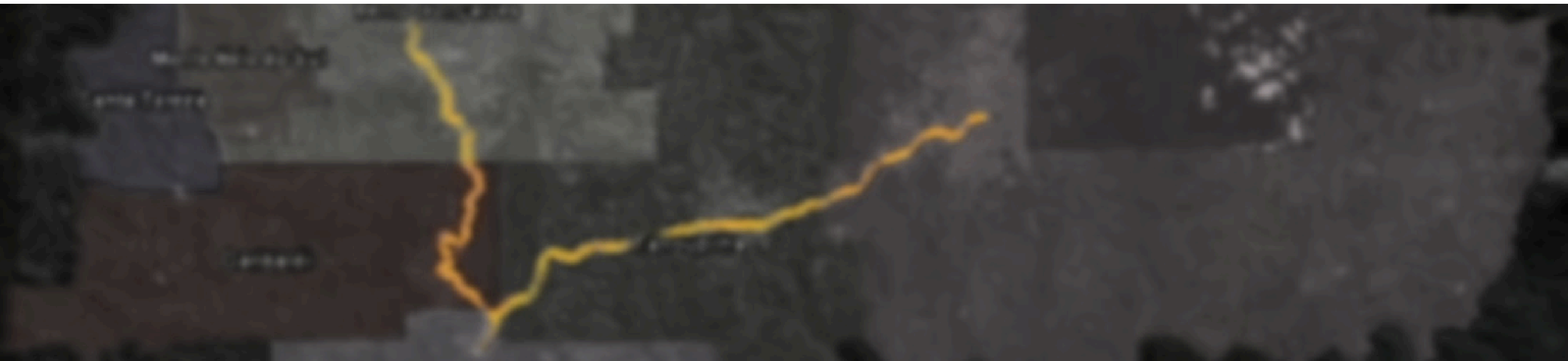
source: <http://www.flickr.com/photos/eletrosnico/5762867657/sizes/l/in/photostream/>



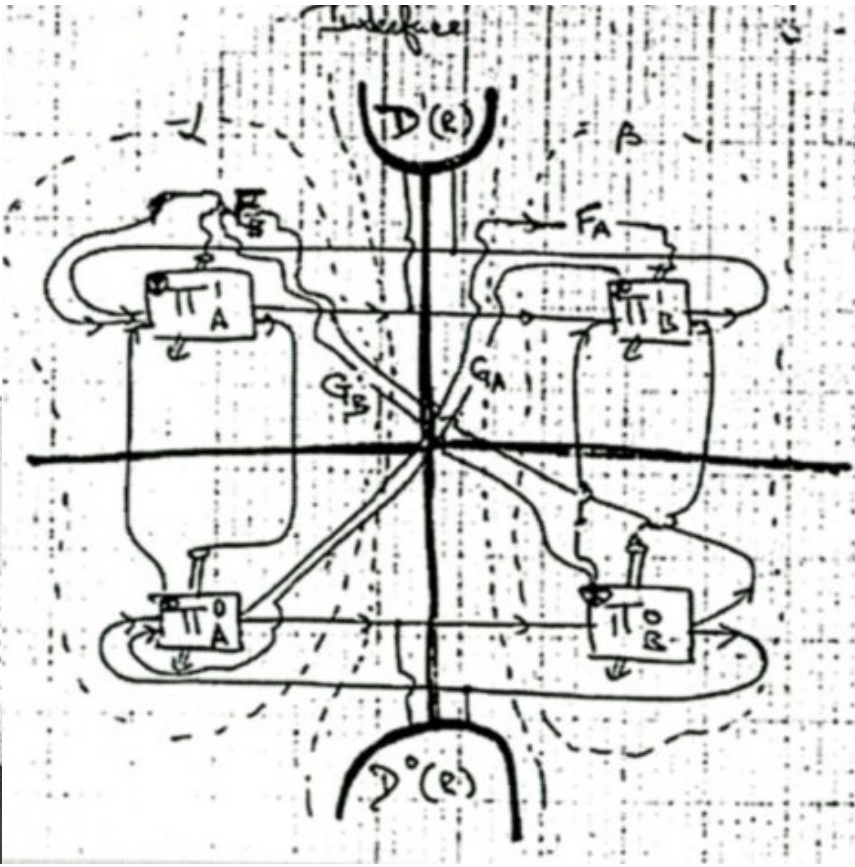
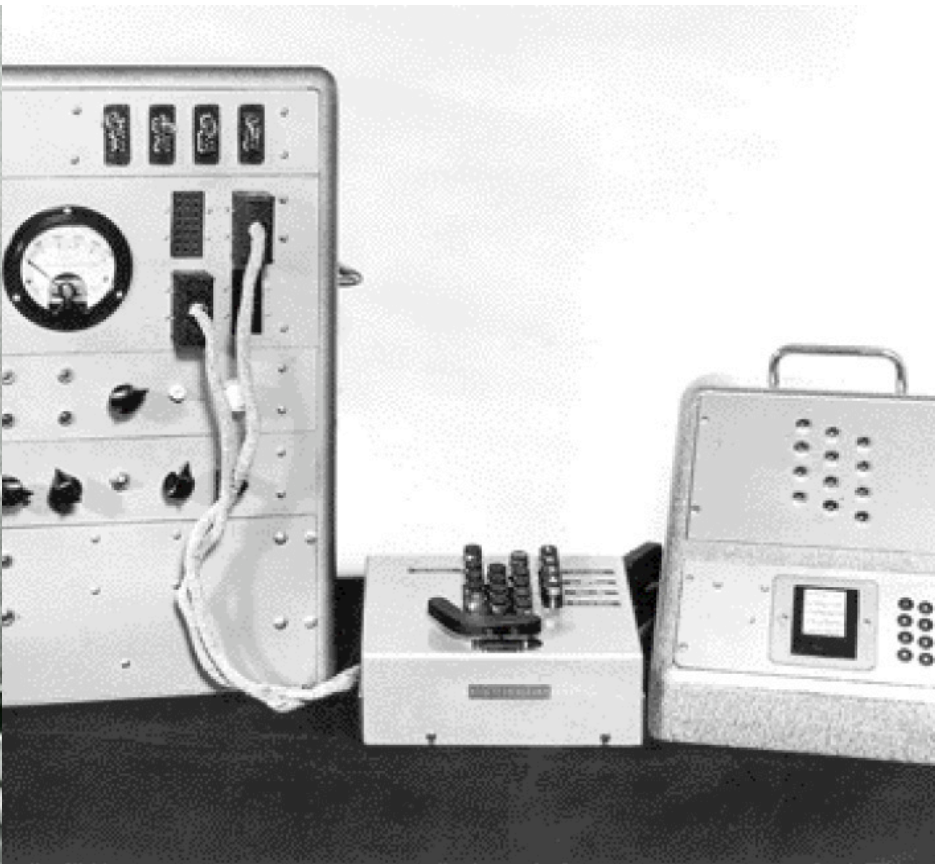
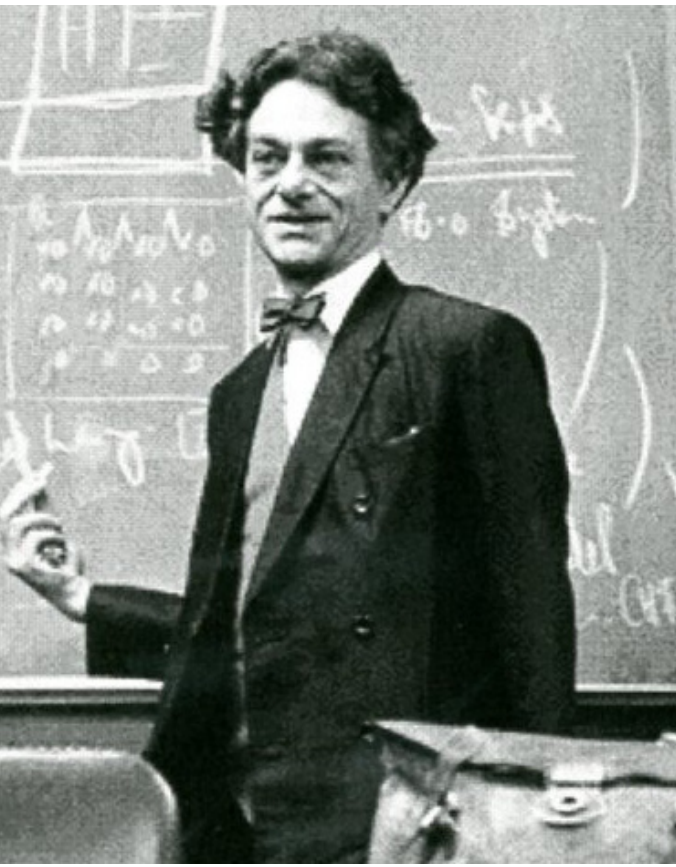
Caxias do Sul Garibaldi
Carlos Barbosa Nova Pádua
Flores da Cunha São Marcos
Bento Gonçalves Farroupilha
Monte Belo do Sul Santa Tereza

TREM SERRA GAÚCHA

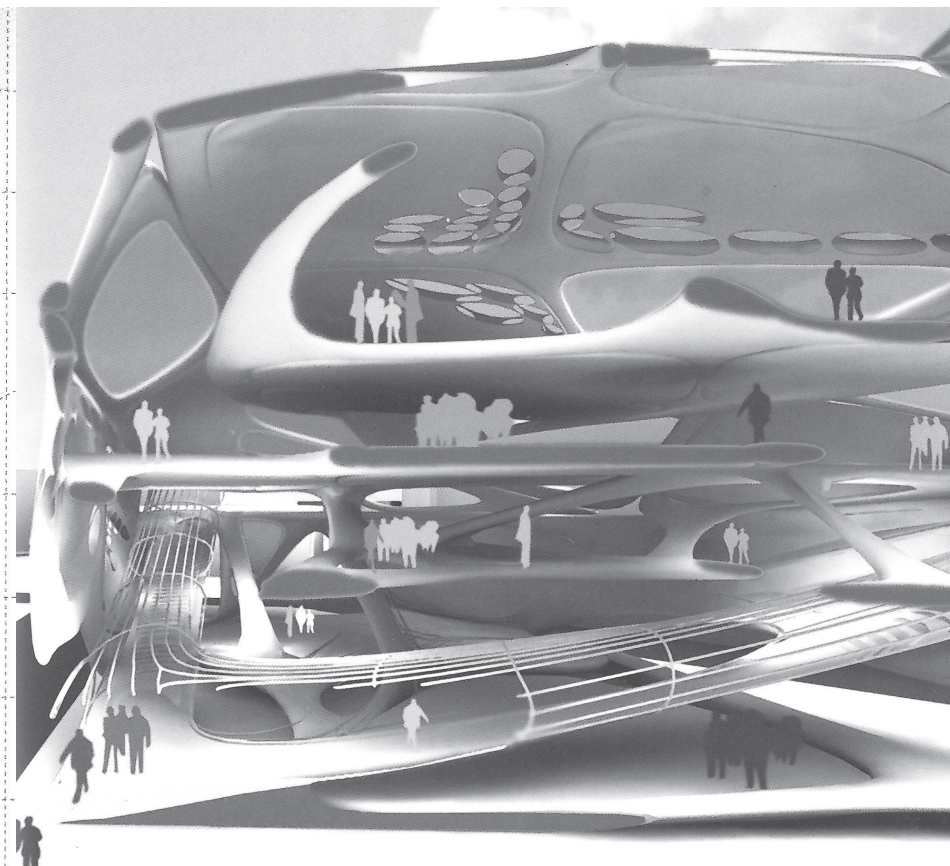
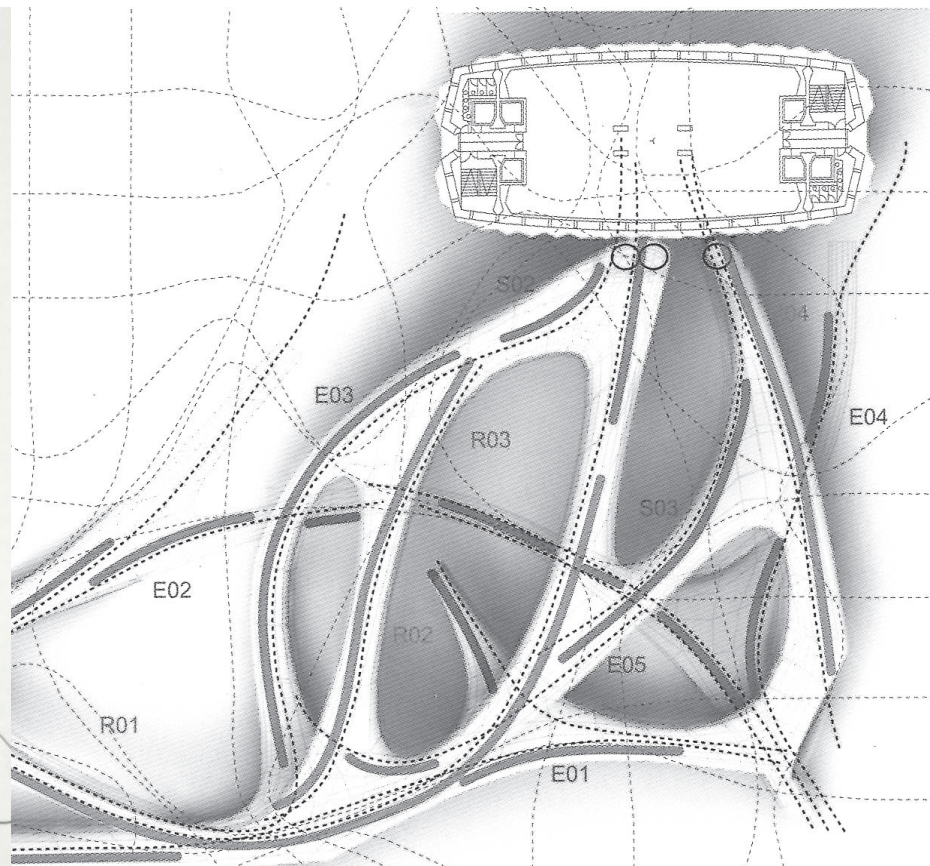
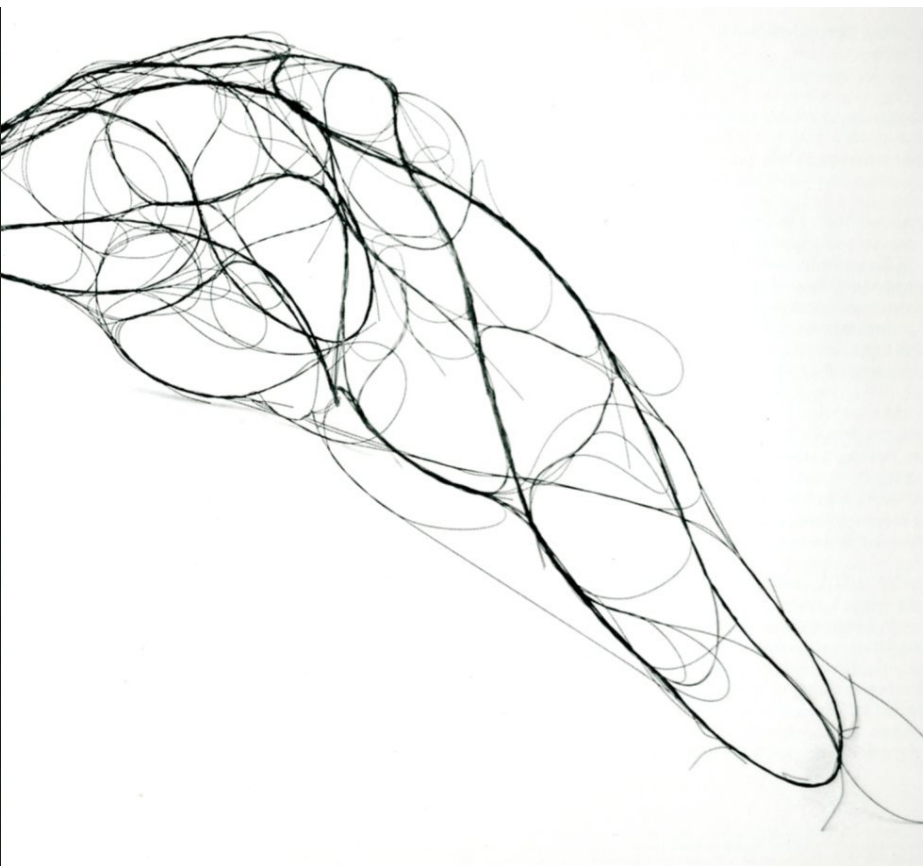
source: <http://ocaxiense.com.br/tag/trem-regional/>



source: <http://ocaxiense.com.br/tag/trem-regional/>



Source: Pask, Gordon. "The Architectural Relevance of Cybernetics." *Architectural Design* September (1969): 494-496. Print.



source: "MRGD." MRGD. N.p., n.d. Web. 4 Nov. 2011. <<http://studio.mrgd.co.uk/>>

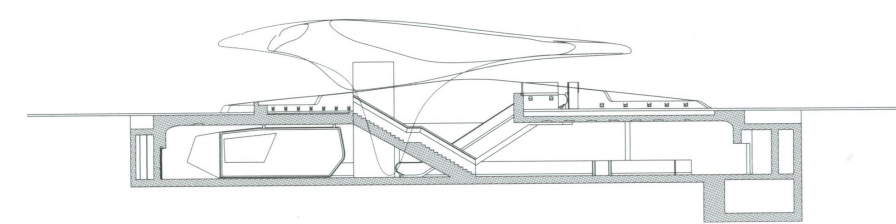
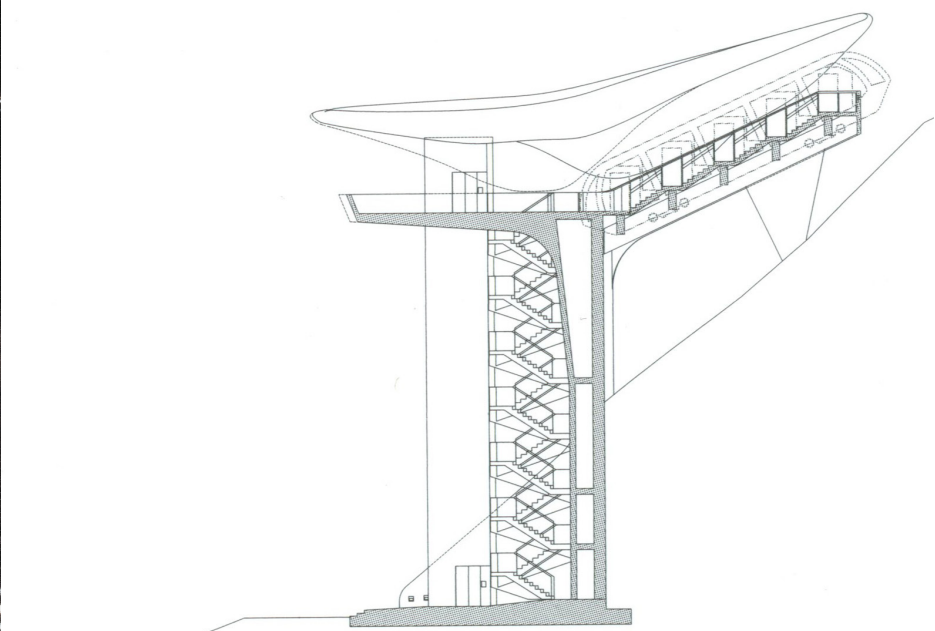


Zaha: Nordpark, Austria

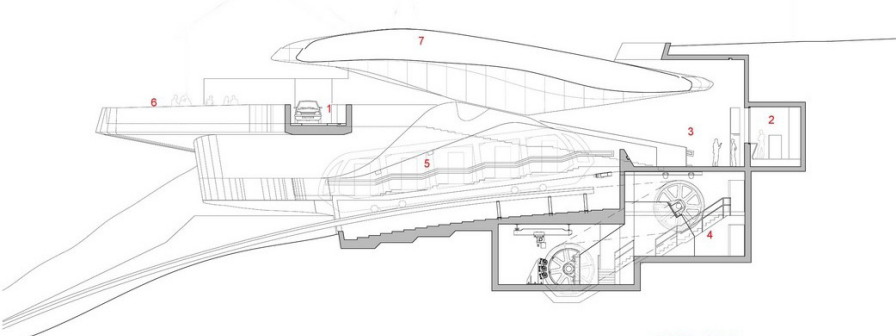
source of all images: GA document 99

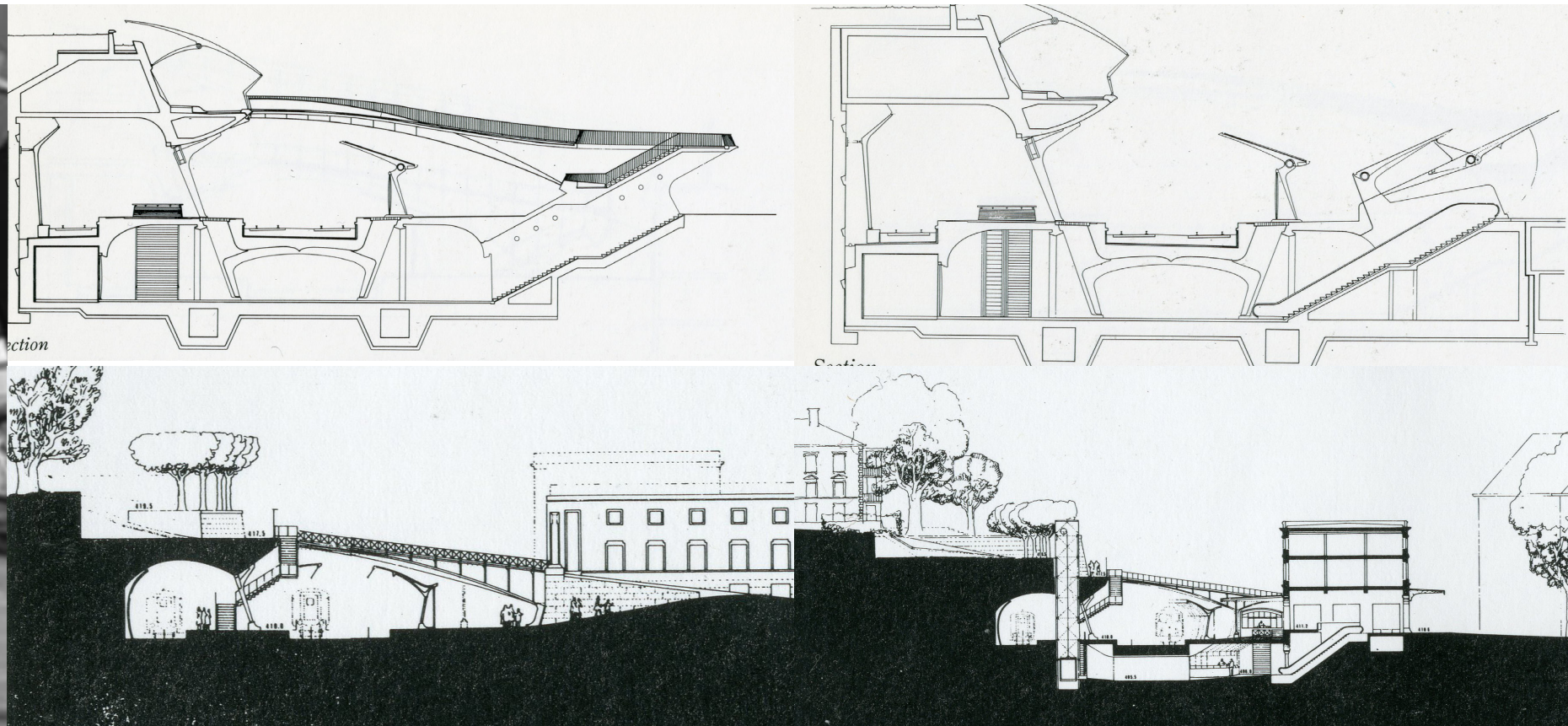


Alpenzoo Station



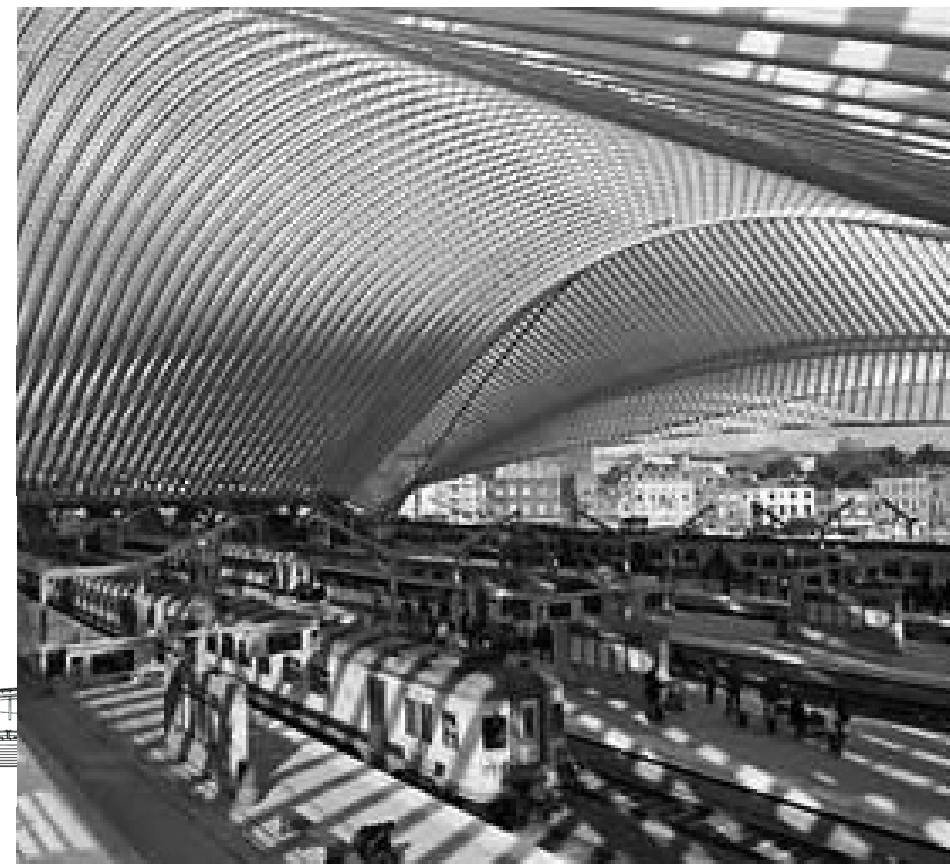
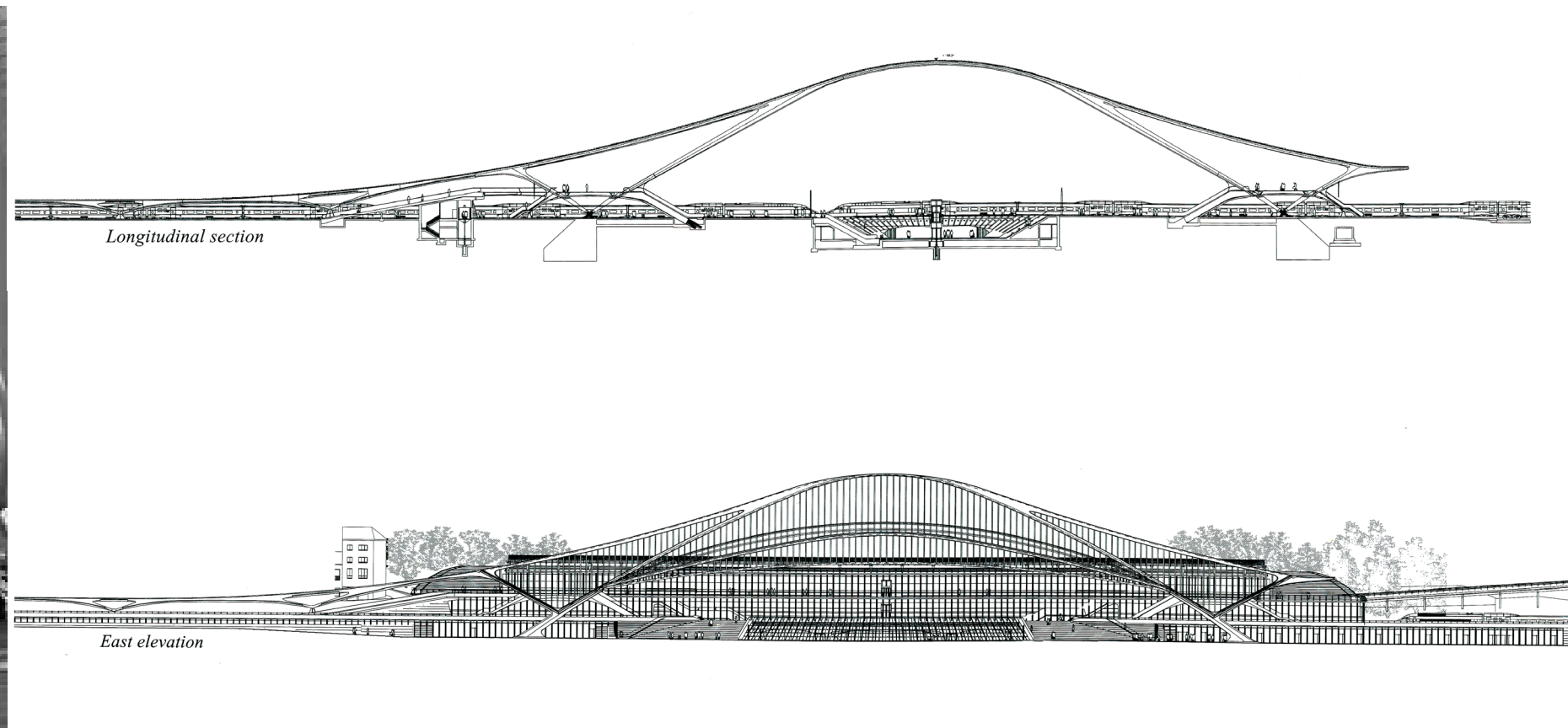
Congress Station





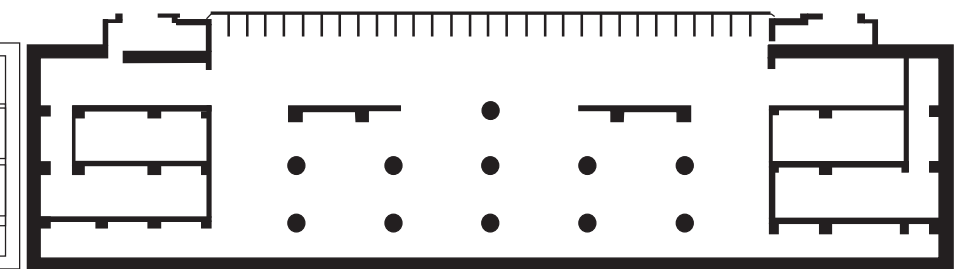
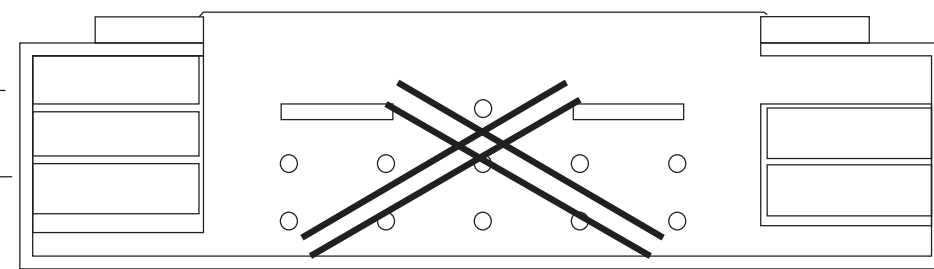
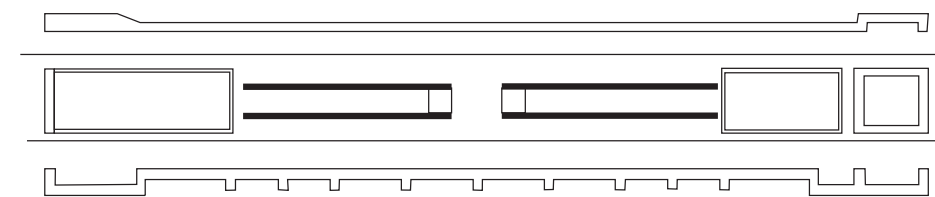
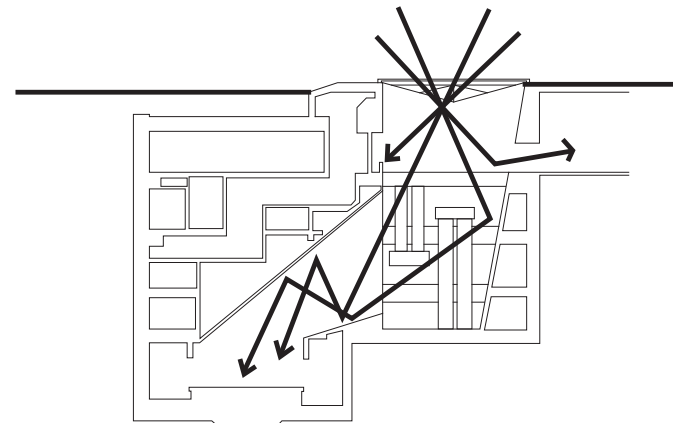
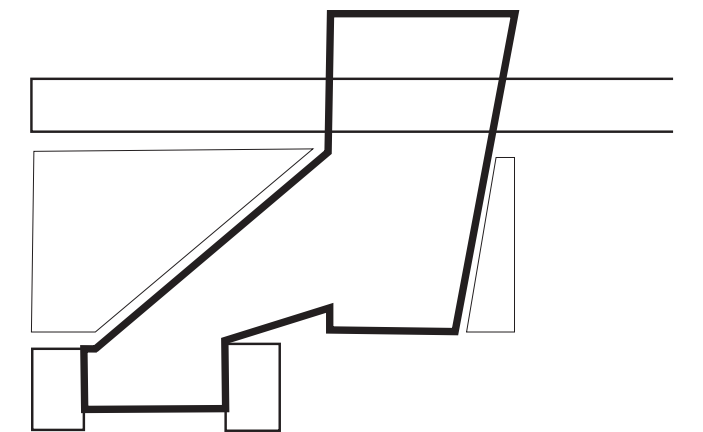
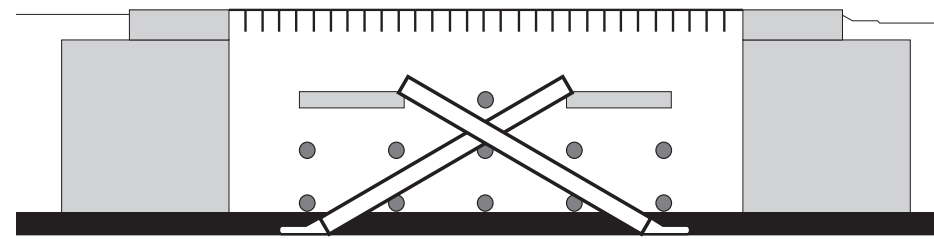
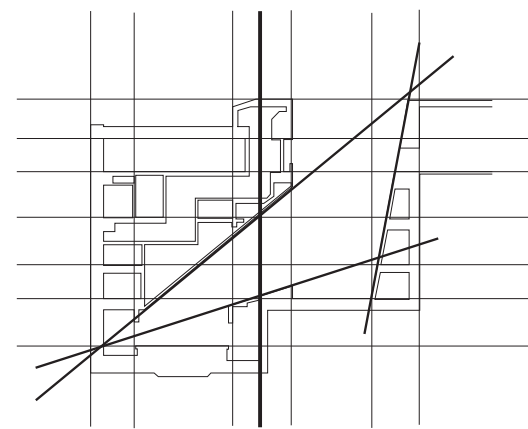
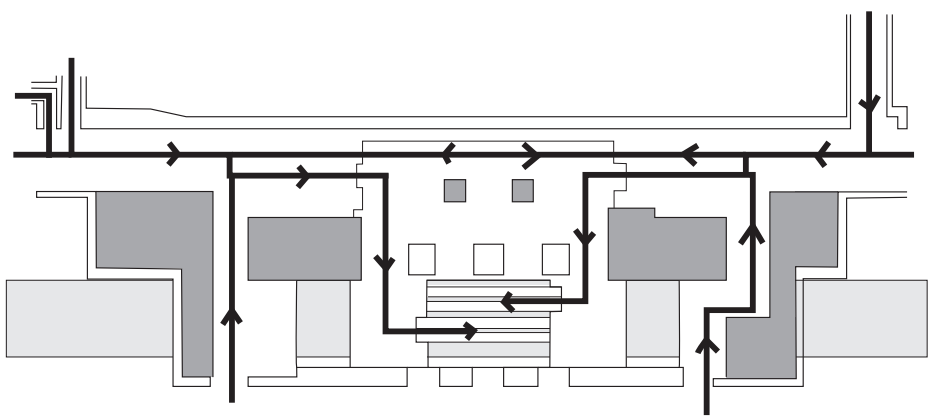
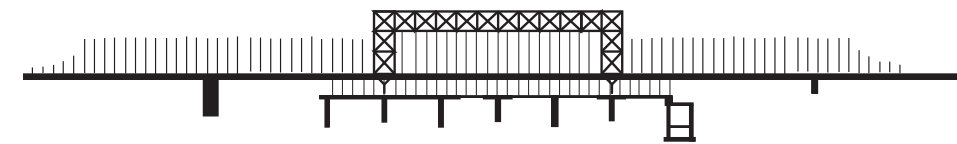
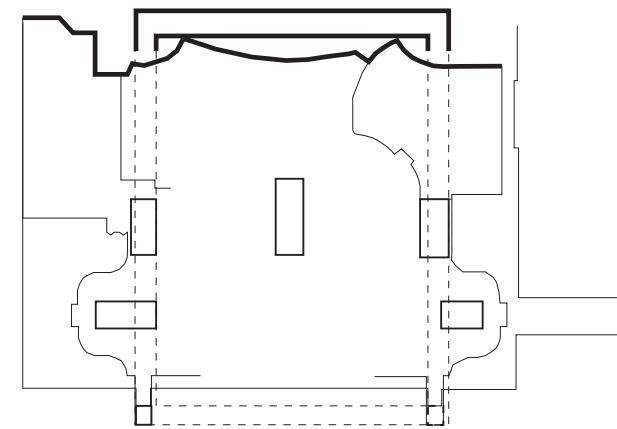
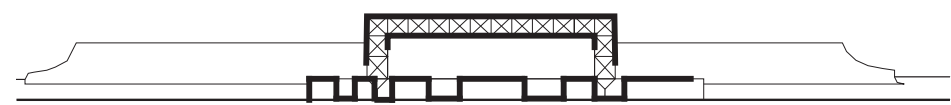
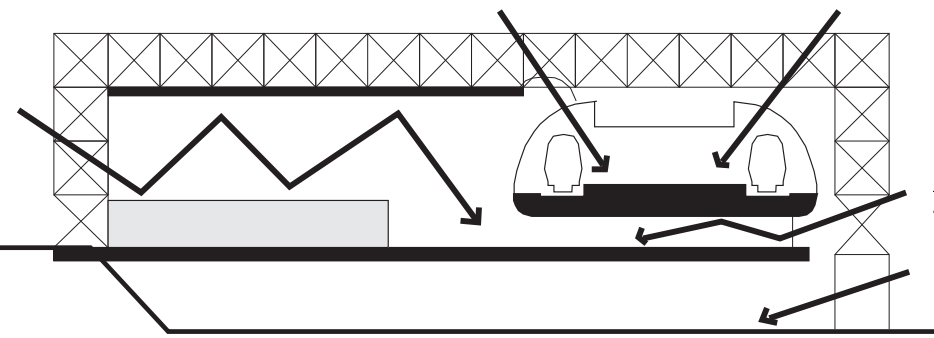
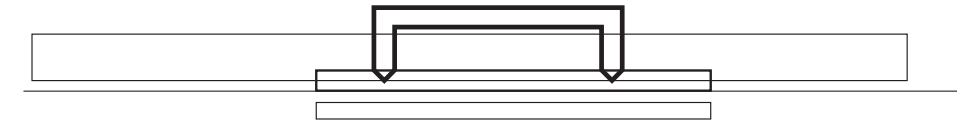
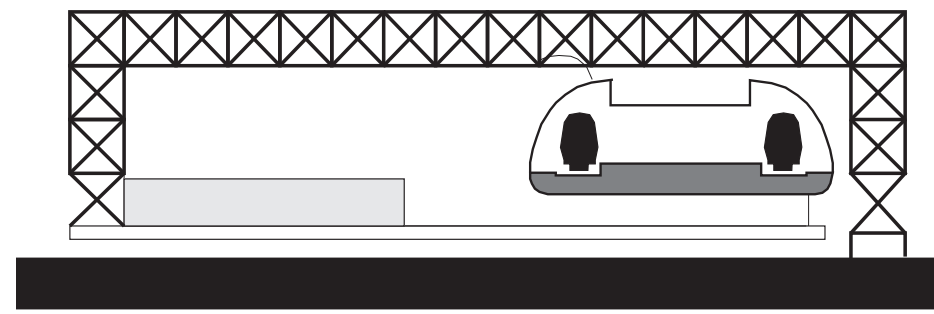
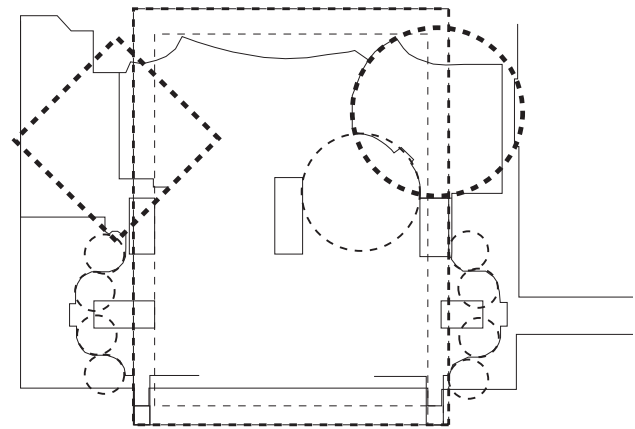
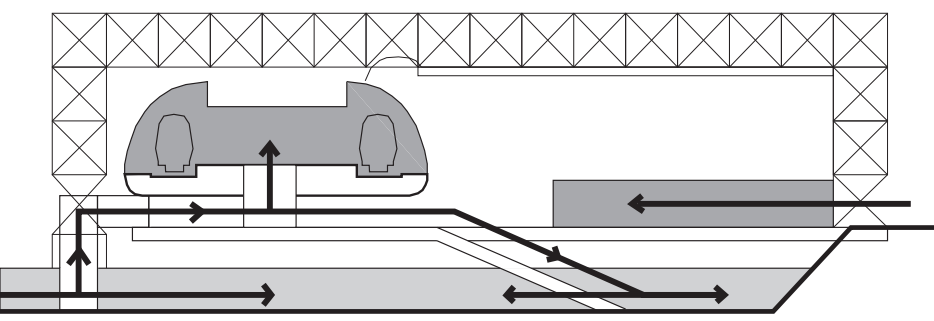
Caltrava: Stadelhofen, Switzerland

source of images: <http://openbuildings.com/buildings/z-rich-stadelhofen-profile-35875>

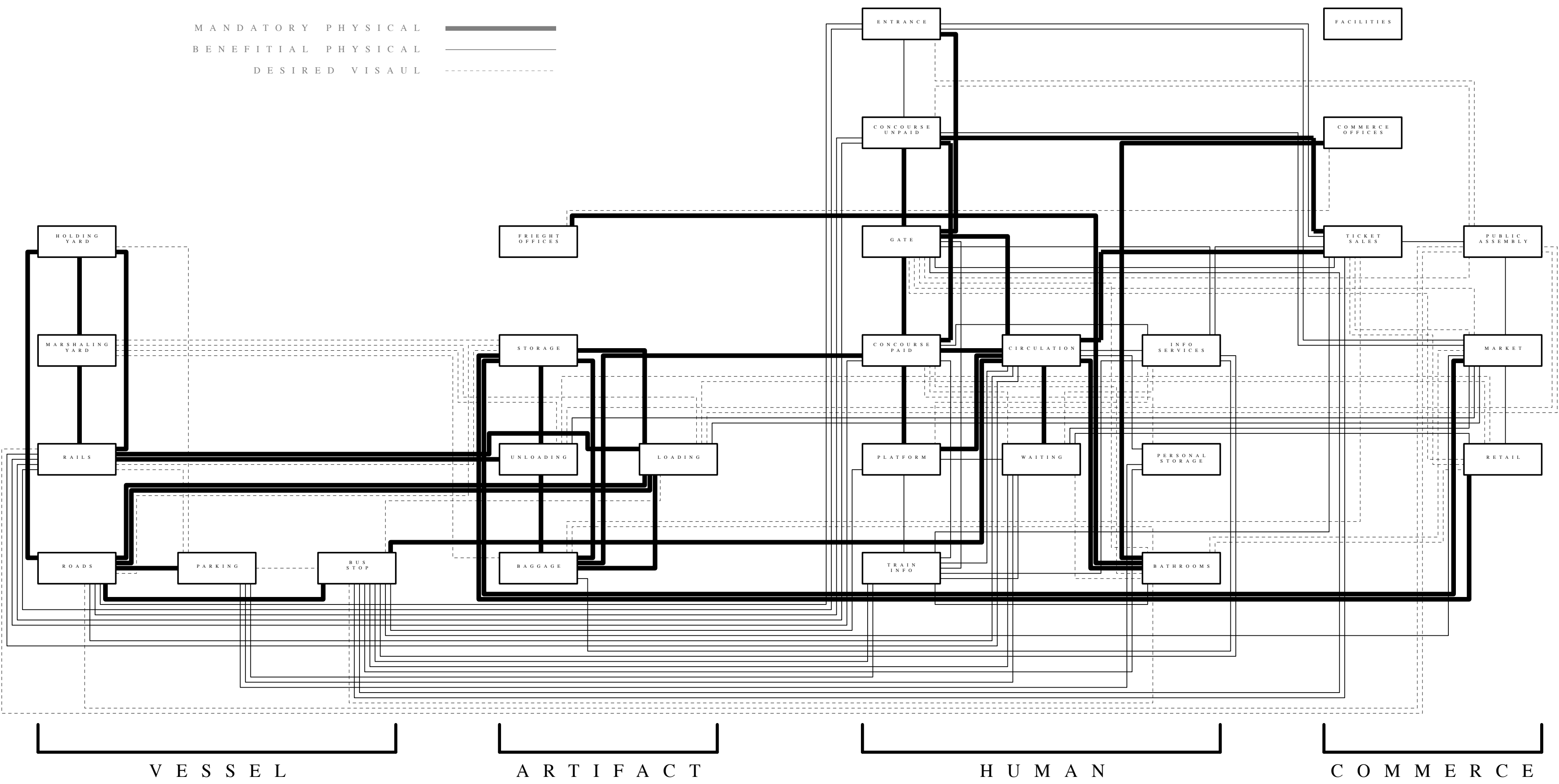


Caltrava: Liege-guillemins TGV, Belgium

source of images: GA document 28



MANDATORY PHYSICAL **—————**
 BENEFITIAL PHYSICAL **—————**
 DESIRED VISUAL **- - - - -**



SKETCHUP



VESSEL

AUTOCAD



FILTER

MAXWELL RENDER

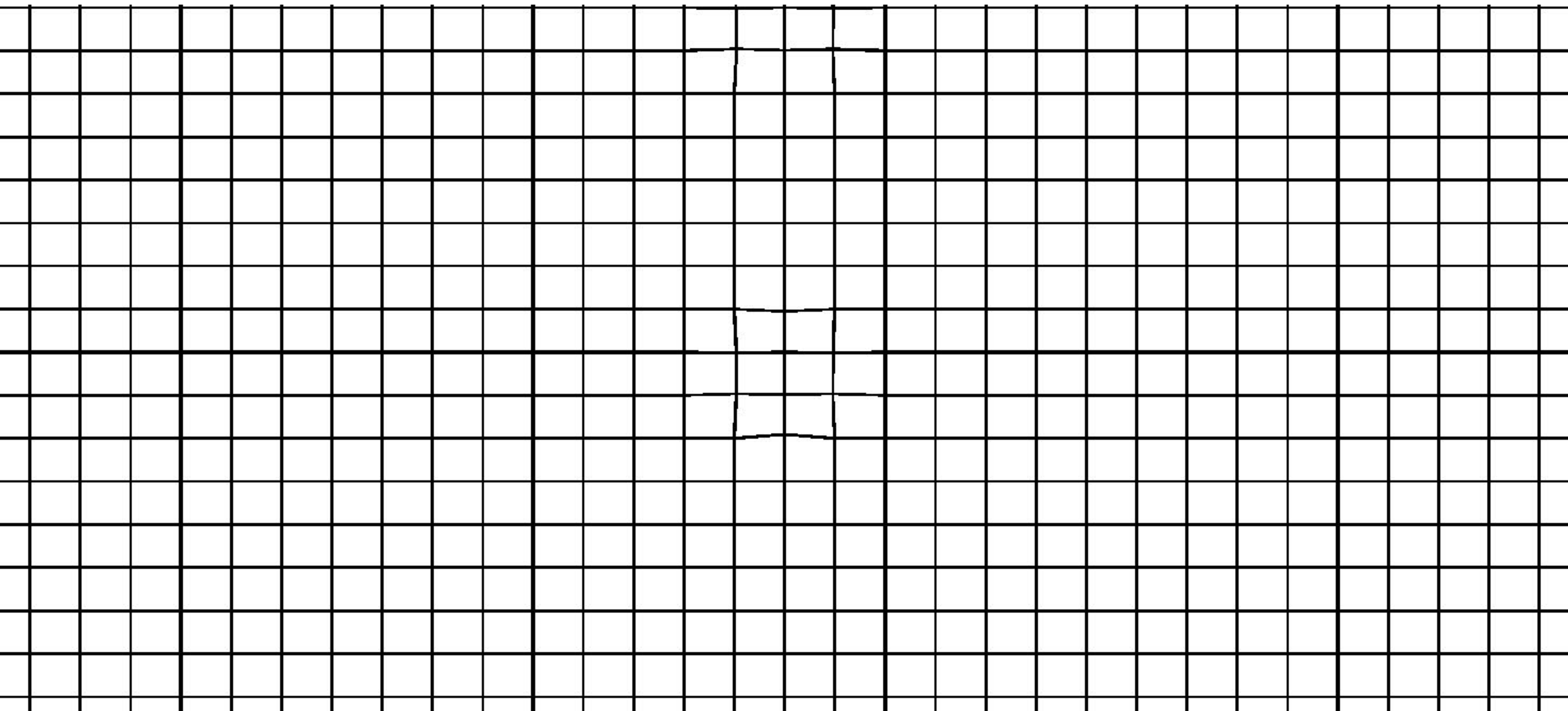


GATEWAY

PARACLOUD GEM



PROPAGATOR



PEEL

SHIFT

SQUEEZE
POINT

SQUEEZE
DIAGONAL

ECHO
EDGE

ECHO

