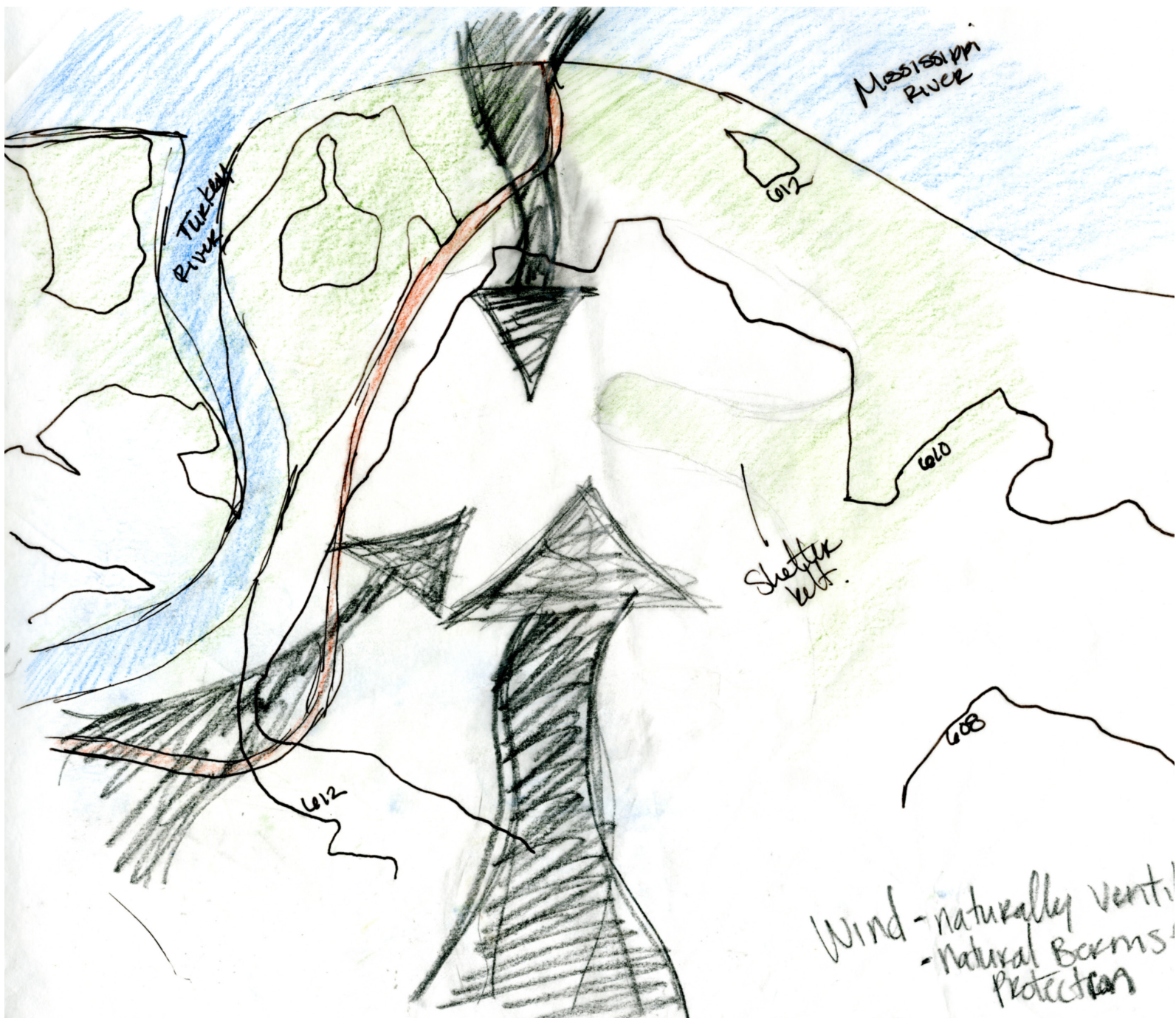




$$300' = \frac{2' \cdot 0' \cdot 3''}{10' \cdot 3''} \cdot 3$$



Mississippi River

Turkey River

612

610

Sheltered

608

612

Wind - naturally vent!
- Natural Barms!
Protection

MISSISSIPPI RIVER

Rhizofiltration
- American sweet gum
- Fern

Indicator
- Long reed
- Spiderwort

hydraulic control

(already existant)

- Poplar trees

TURKEY RIVER

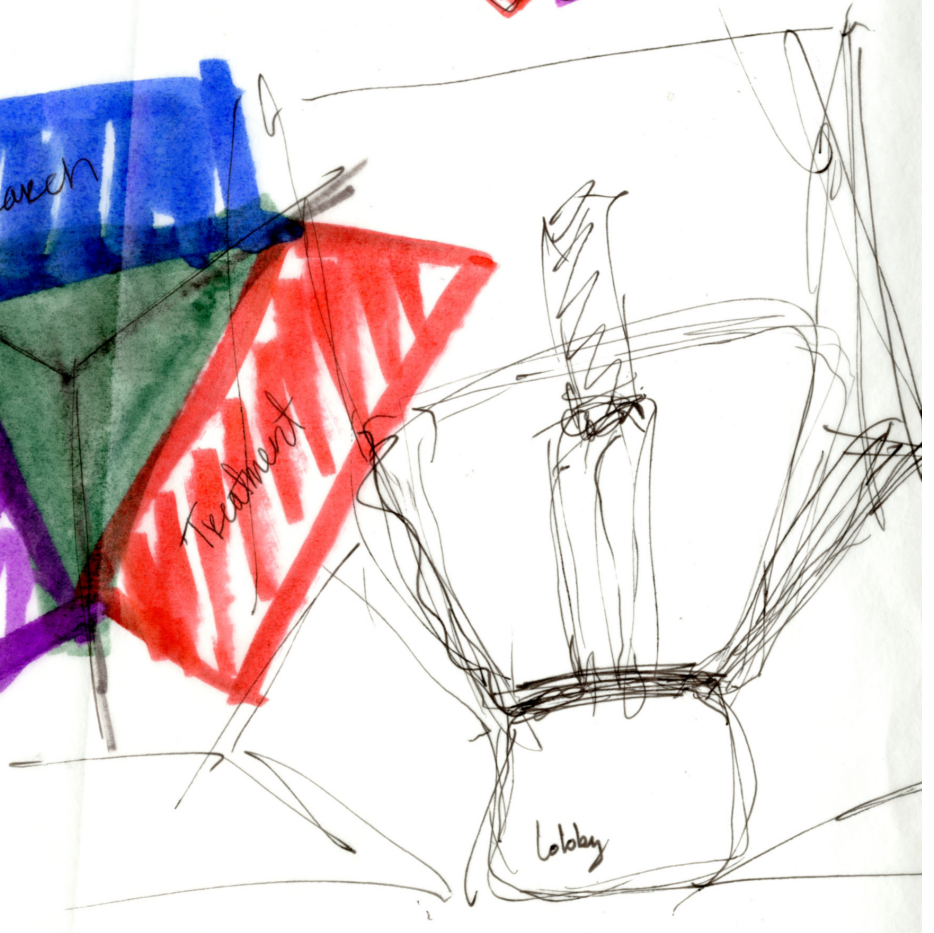
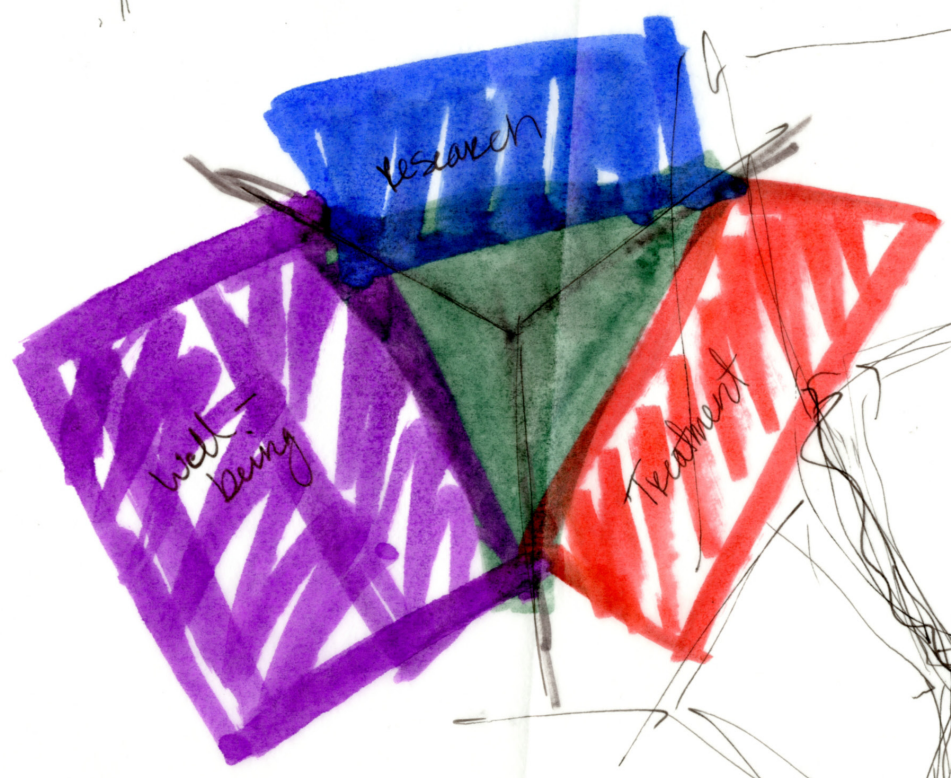
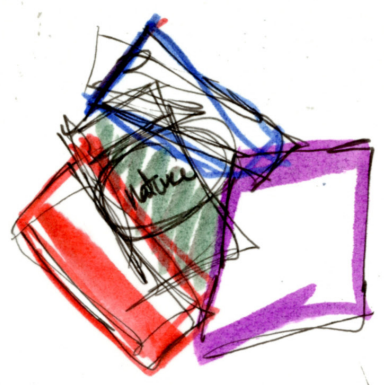
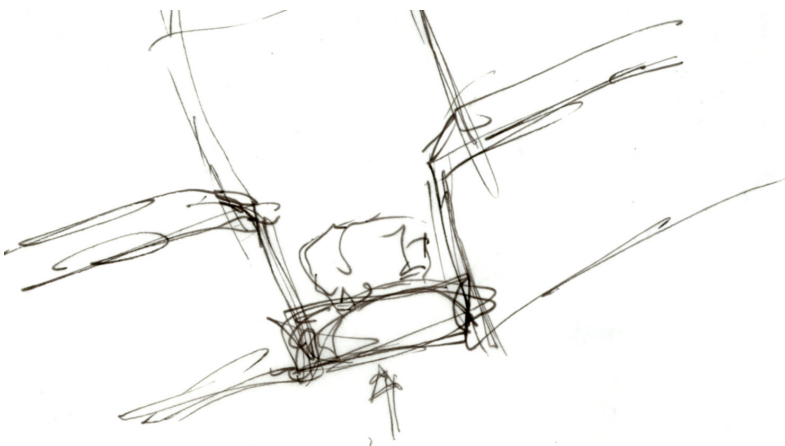
Degradation/
Stabilization

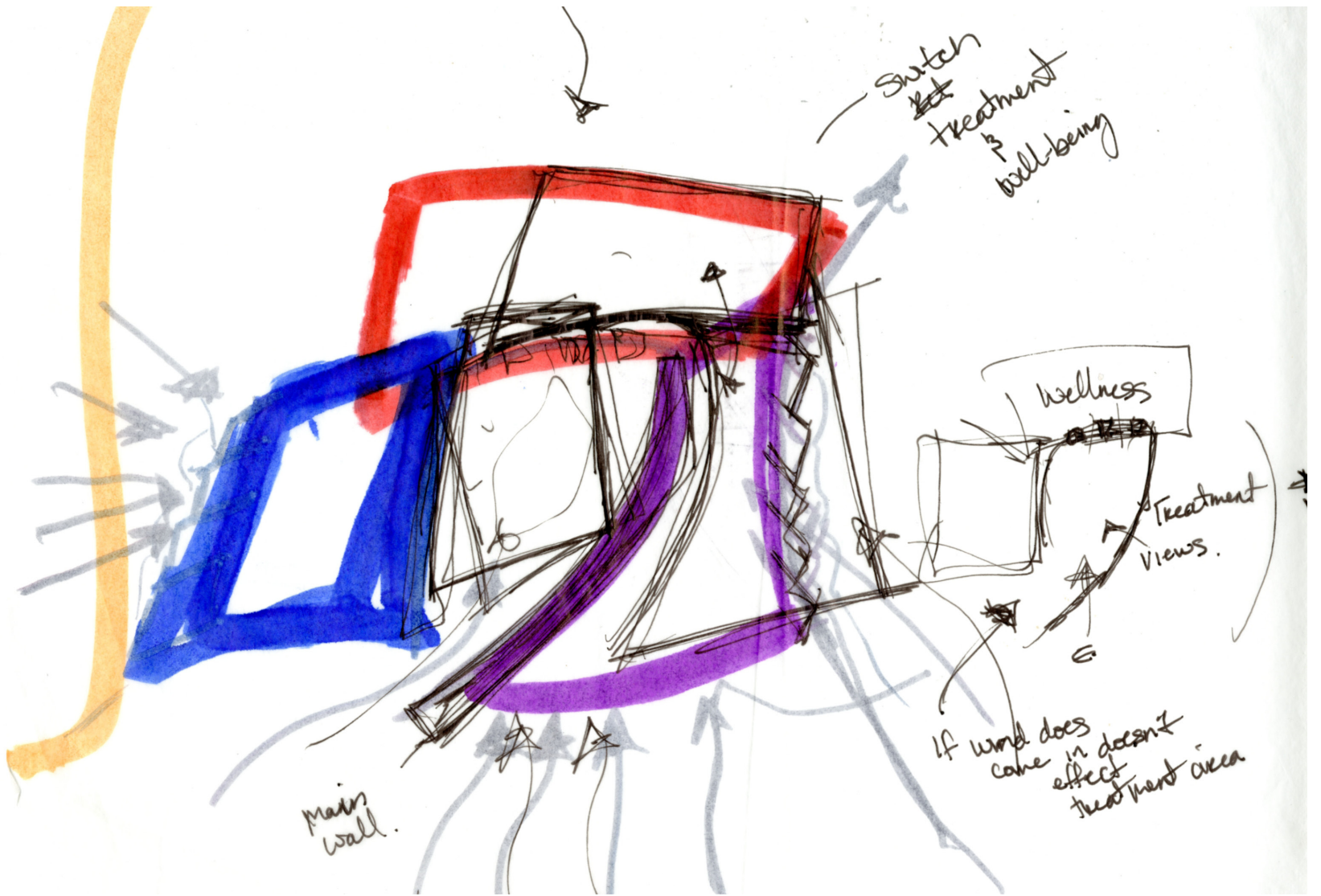
- American Sweet gum
- Big bluestem
- Honey locust

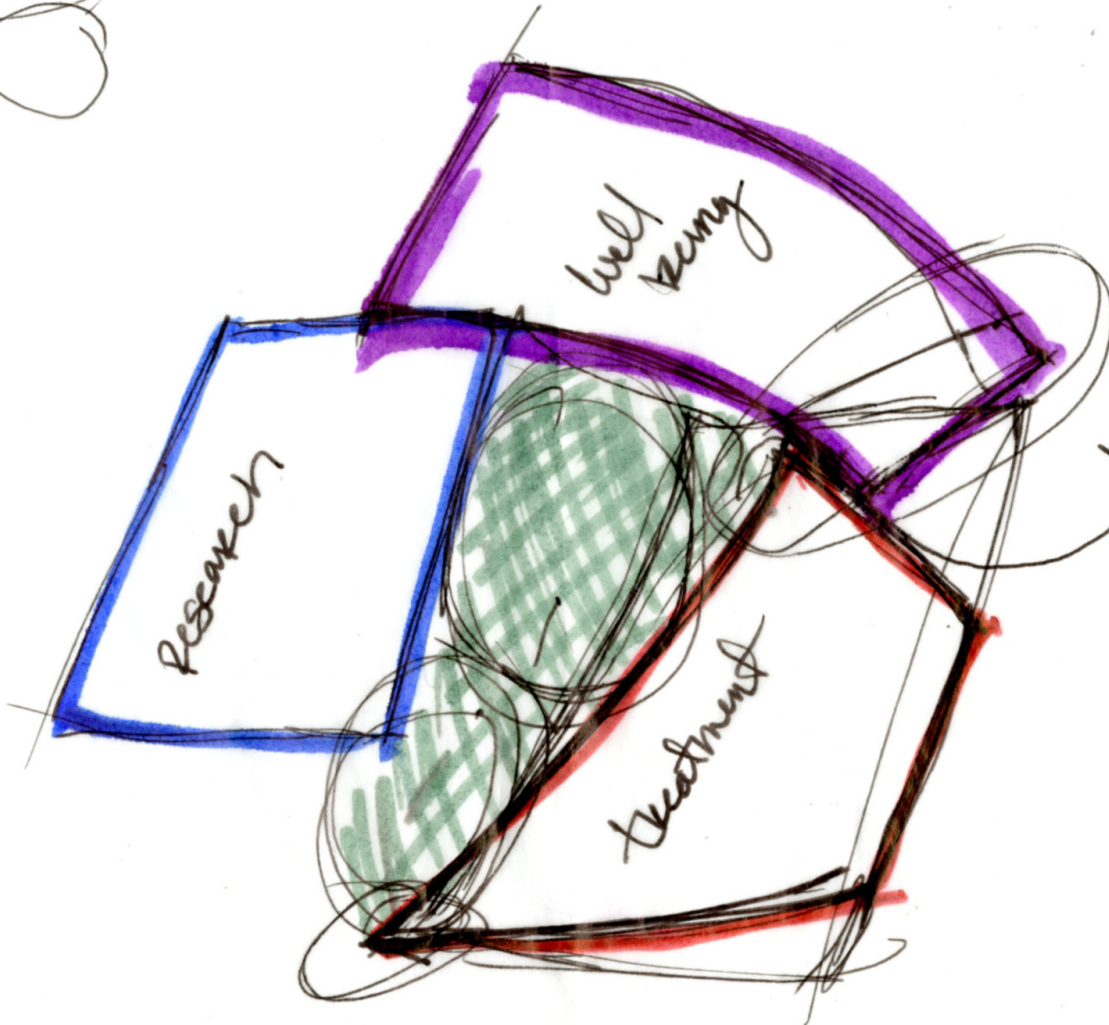
Extraction
- Sunflower
- Basket willow

- Inland Saltgrass

- Canda
- Perennial Ryegrass
- Common Water hyacinth
- Common Ragweed



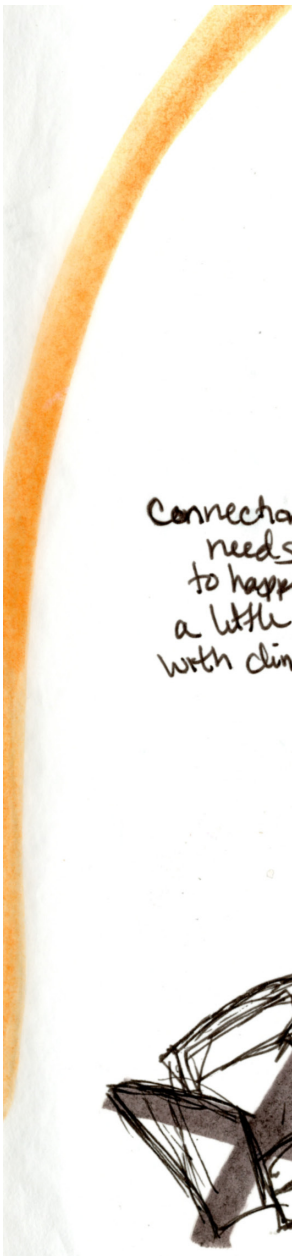




- Don't
need
this
connection

walkway
to garden
outside area

1
don't
waste
space



Arrium
- Biosphere
- dell's children
medical center

Views of
River

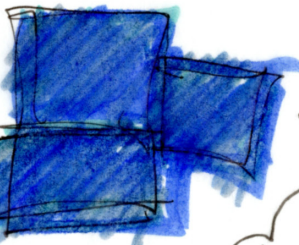


- Access
point.

Connection
needs
to happen
a little overlap
with clinical trials



Views of
Landscape/
Lagoons

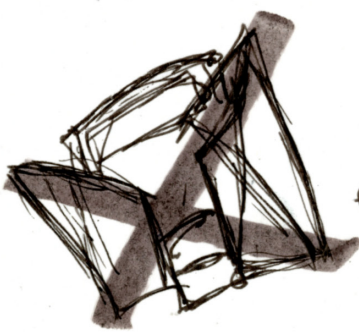


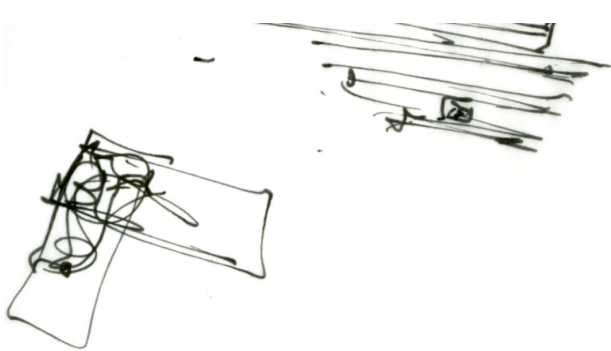
Lagoons

Views of
bluffs



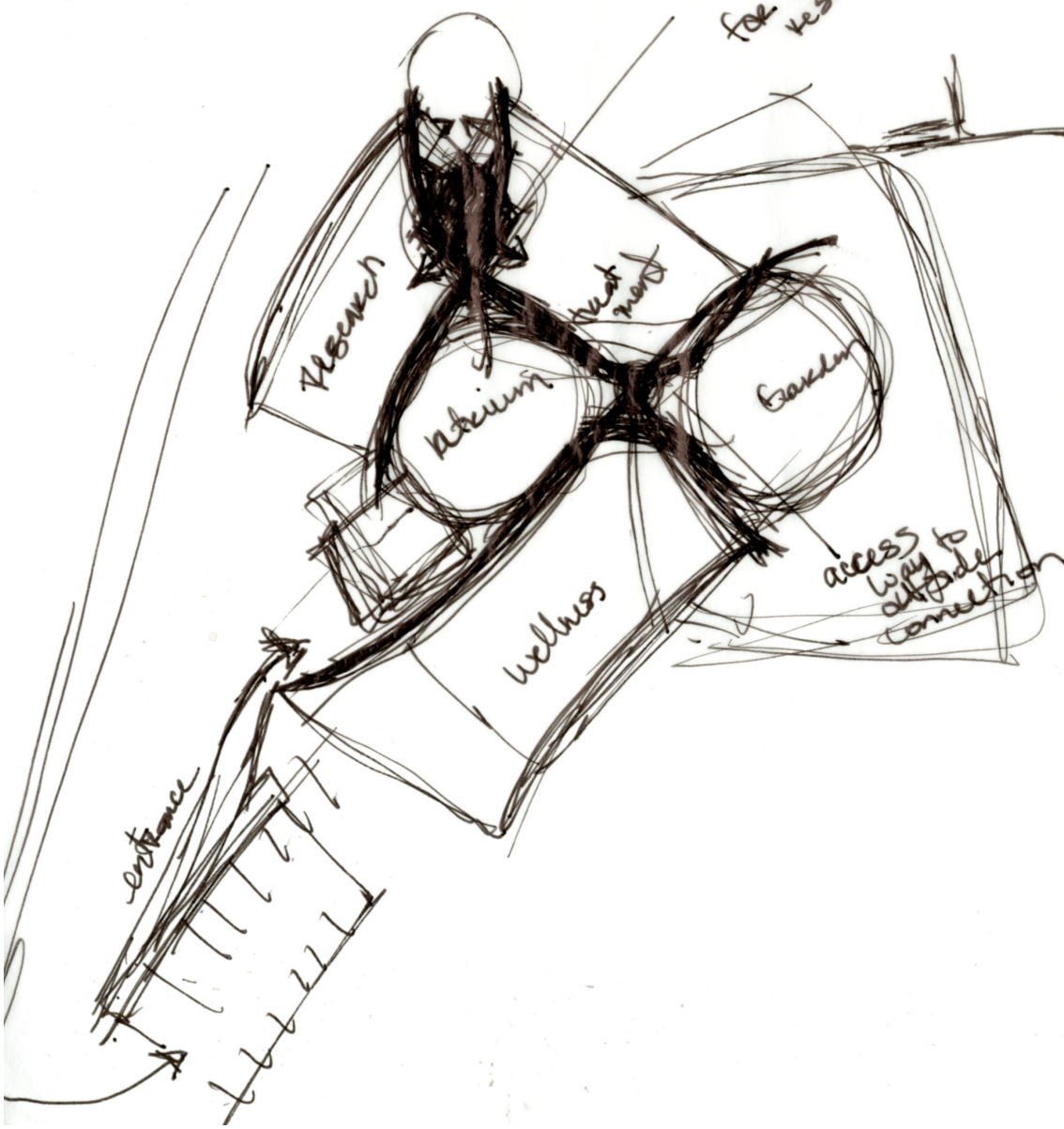
Entrance

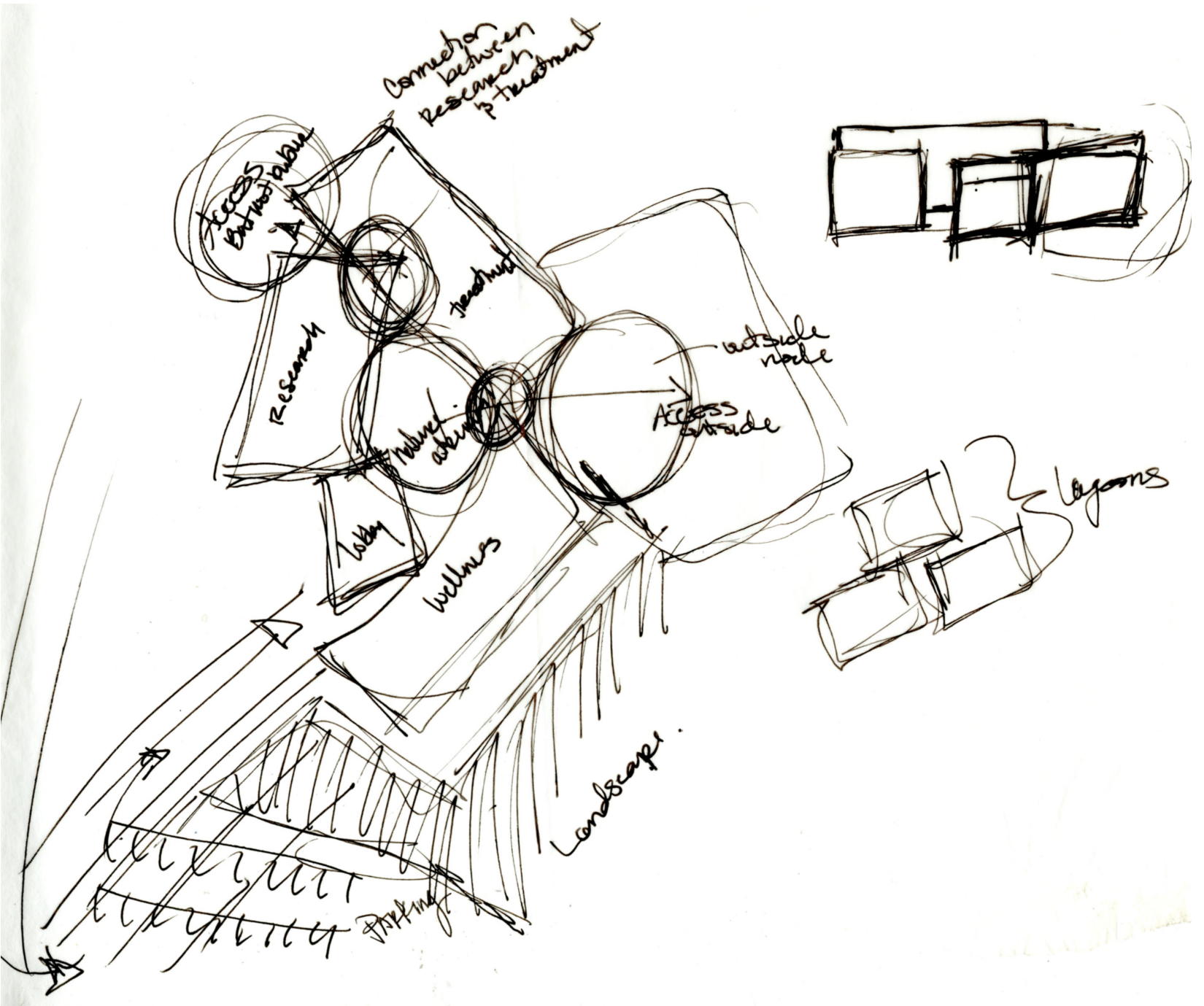




Shared entrance
for both
research/treatment

- 1 level
- no ramps or vertical connections
- Create a floor layout with the walls.



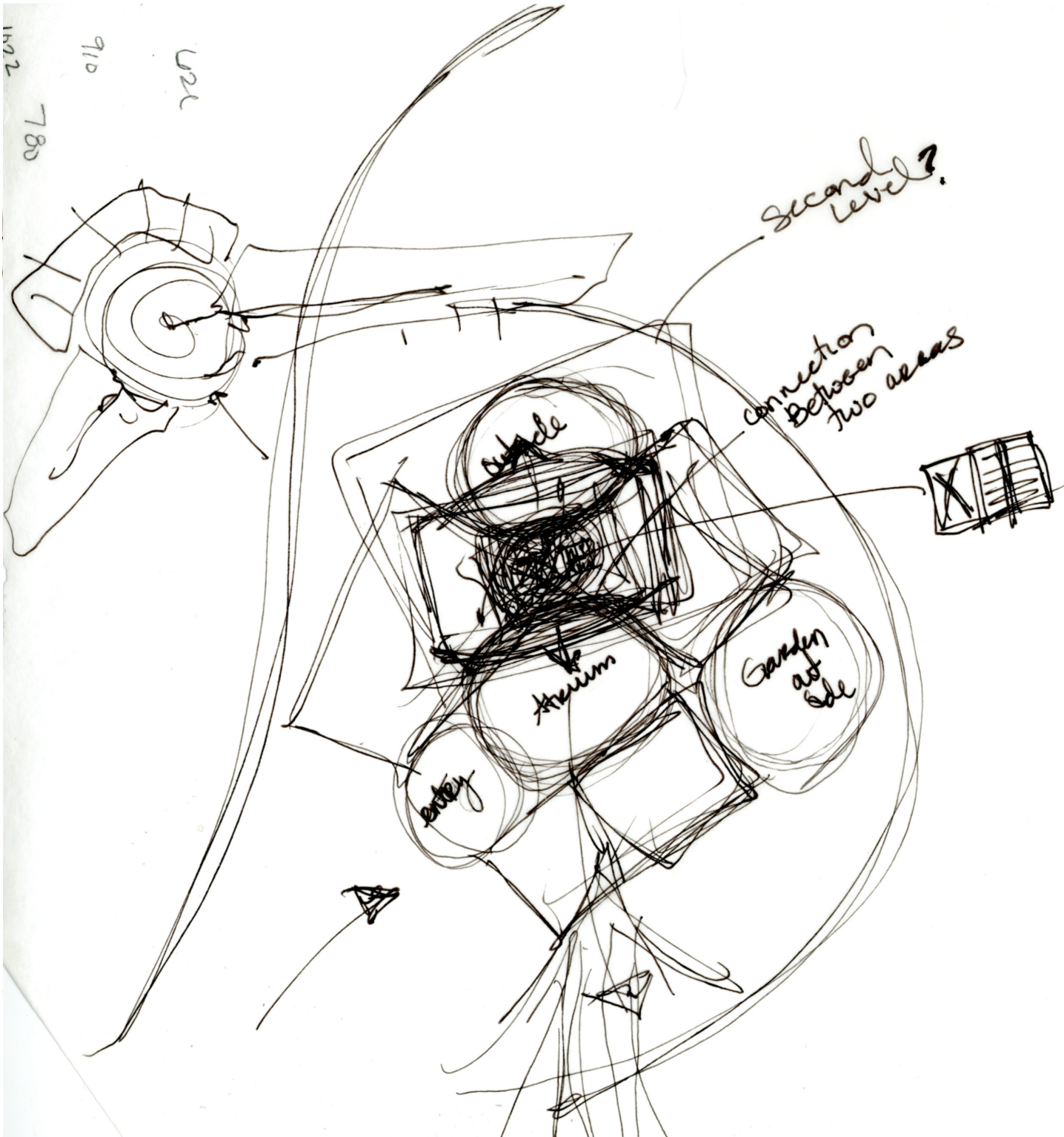


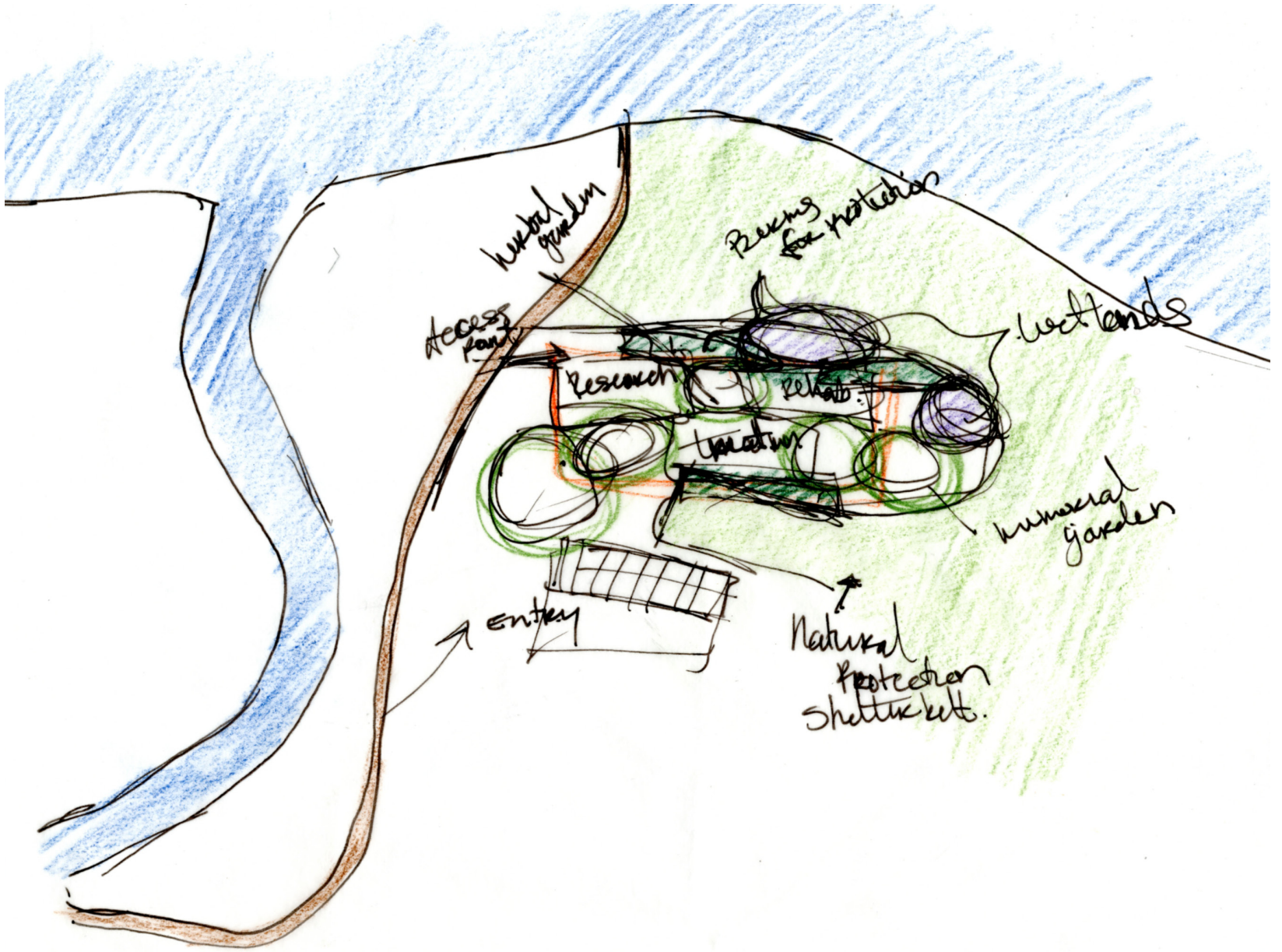
1402

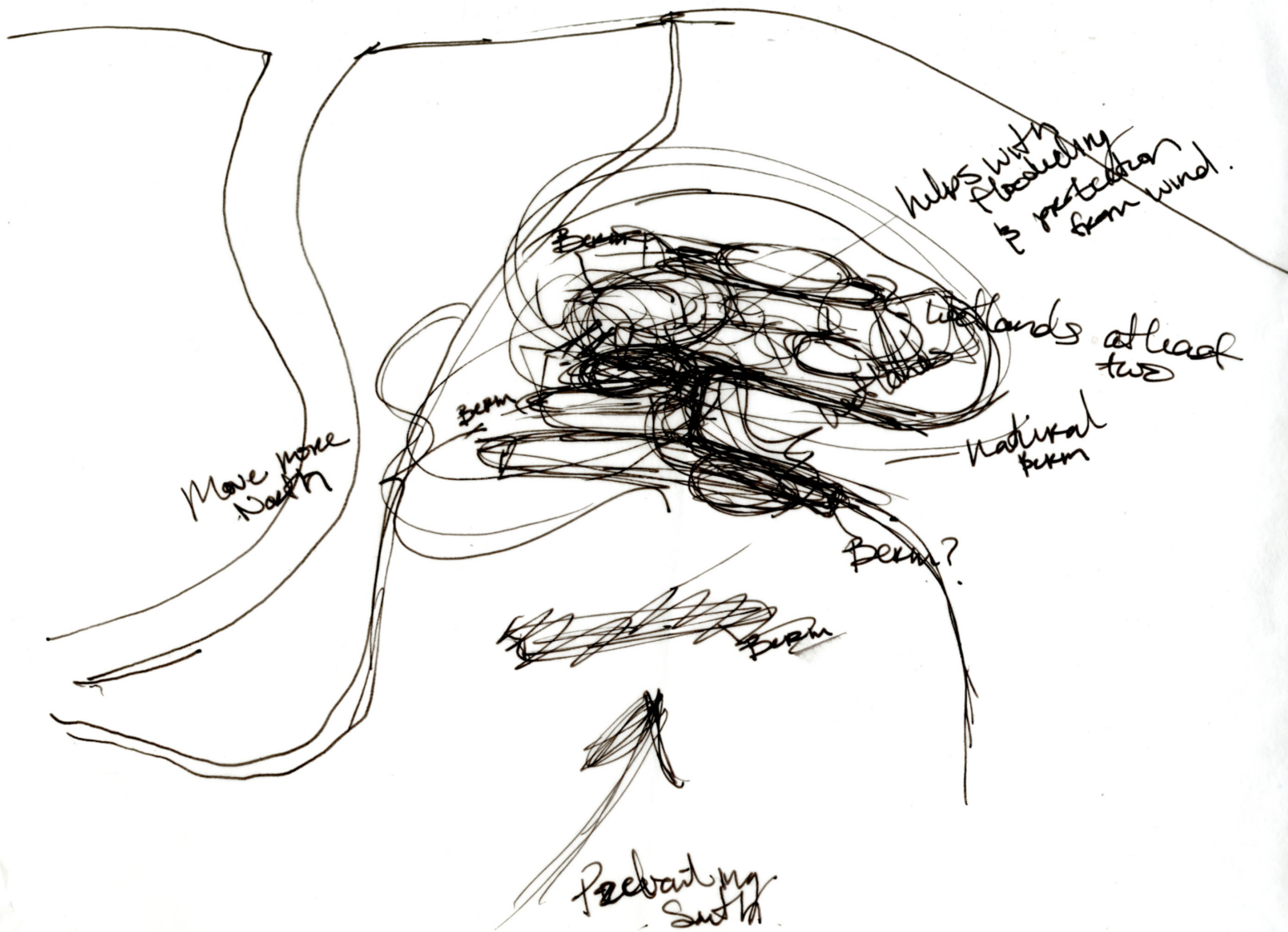
780

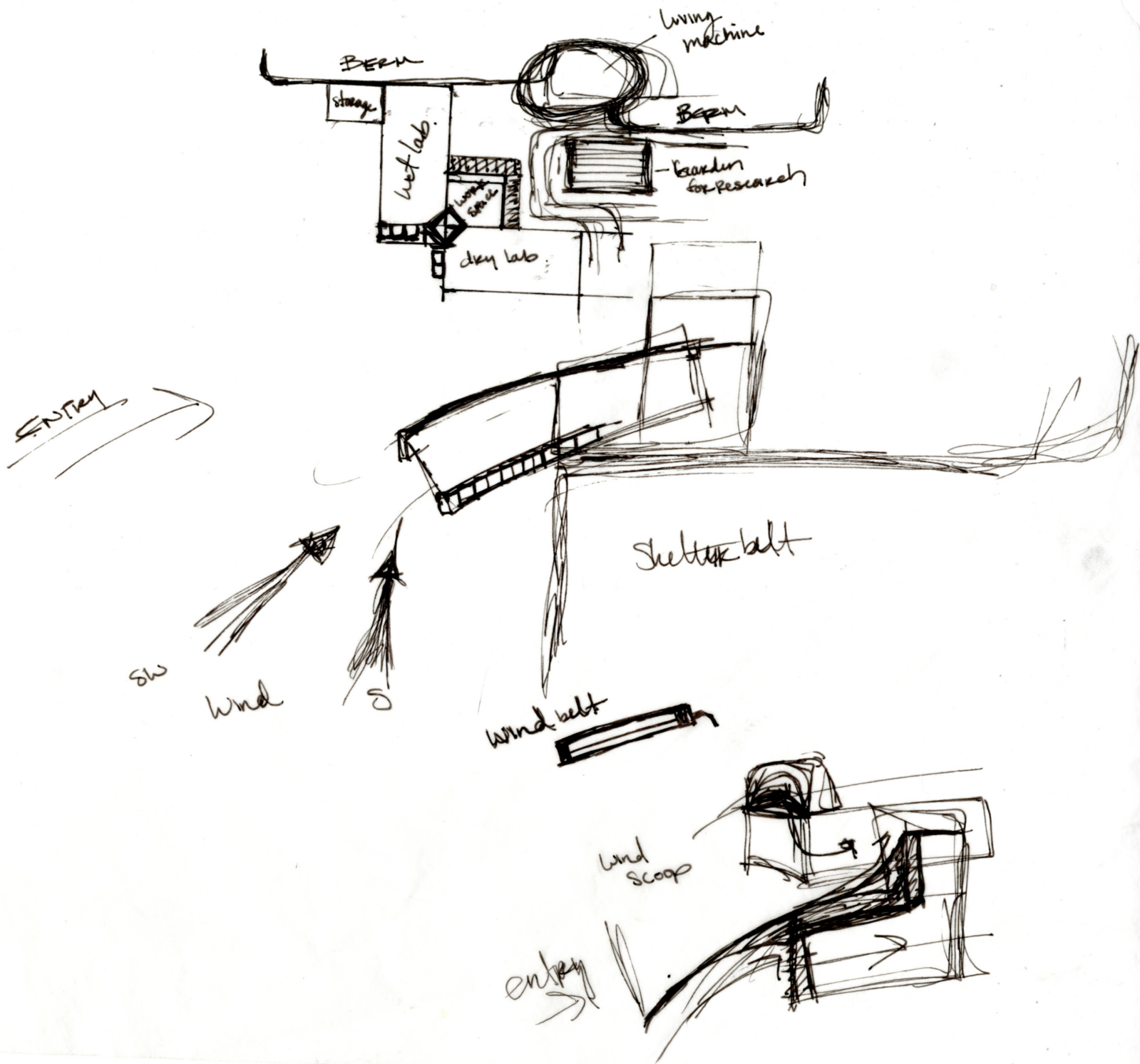
910

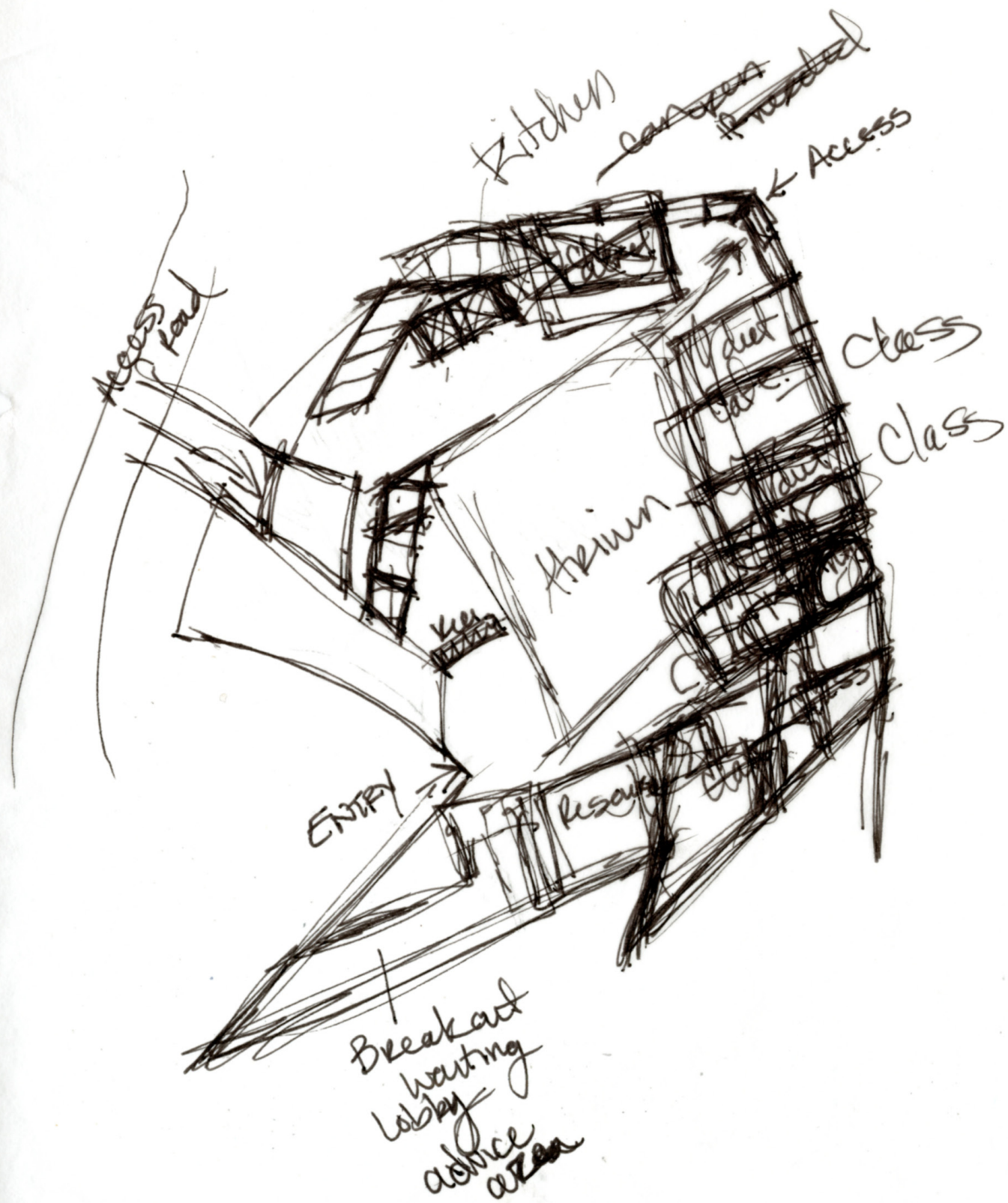
U2L











summer



day lighting

winter

skylight

ventilation

southside
ventilation

glass northside

