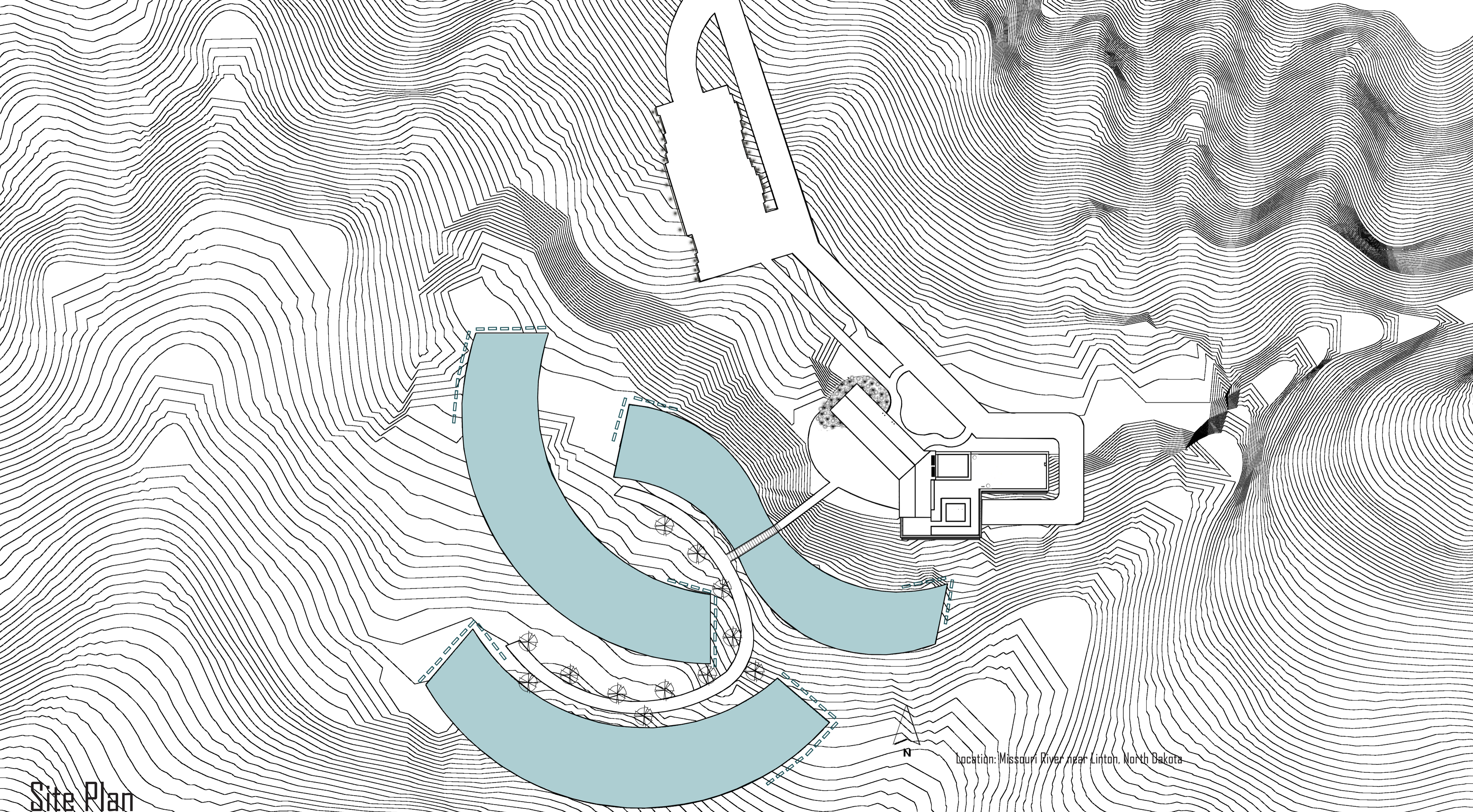


Water Resource Experiment Station

Kimberly Farmer --- Arch 771 --- Fall 2012 --- Professor Mark Barnhouse

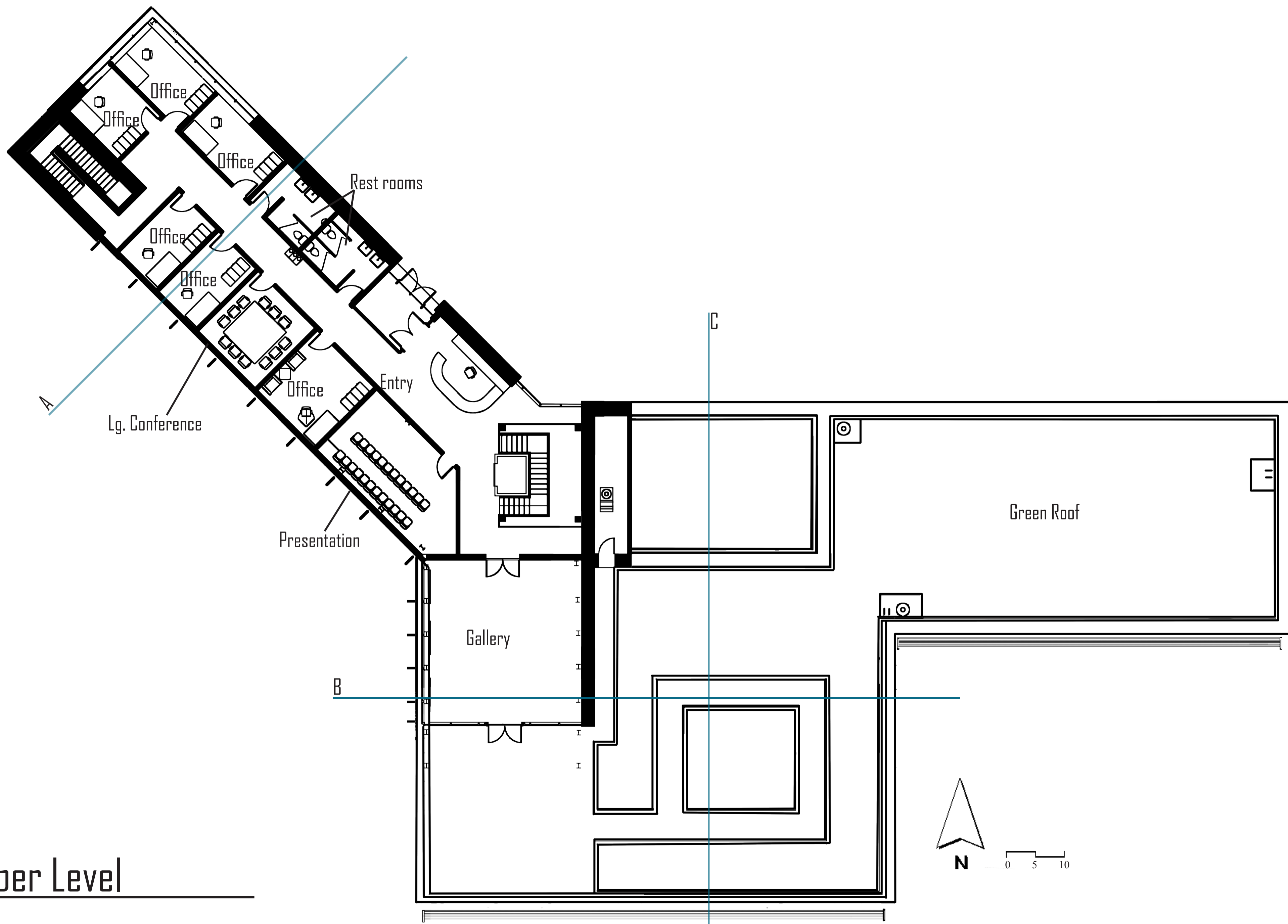


Location: Missouri River near Linton, North Dakota

Site Plan



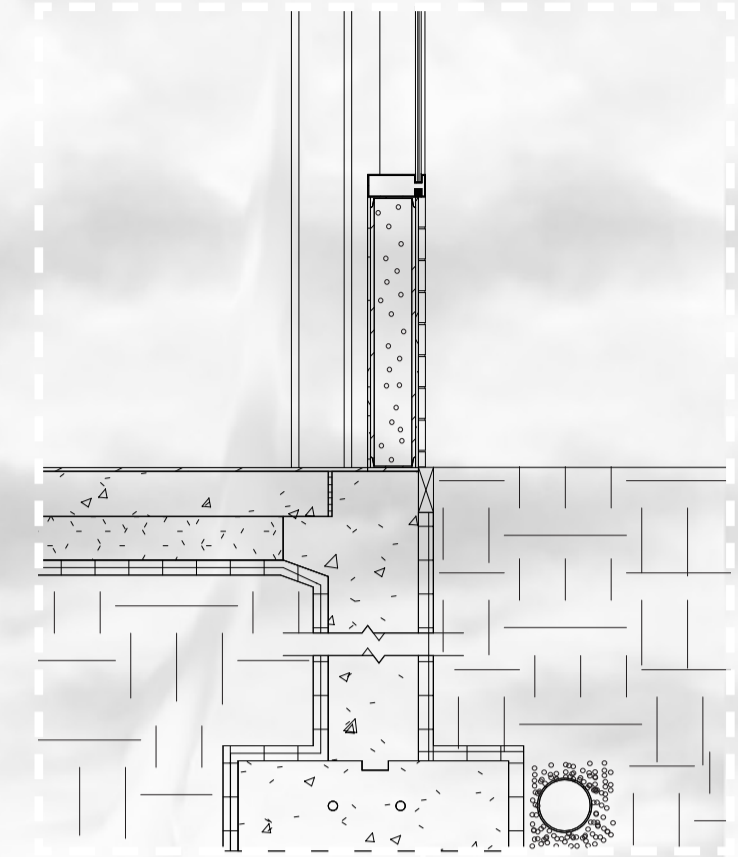
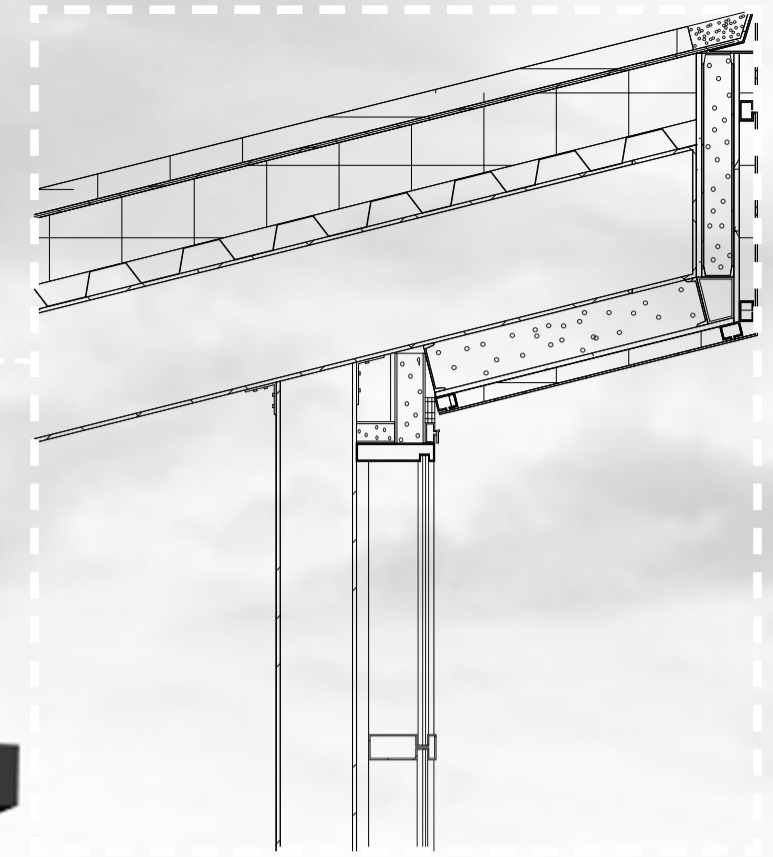
Exterior View



Floor Plan: Upper Level

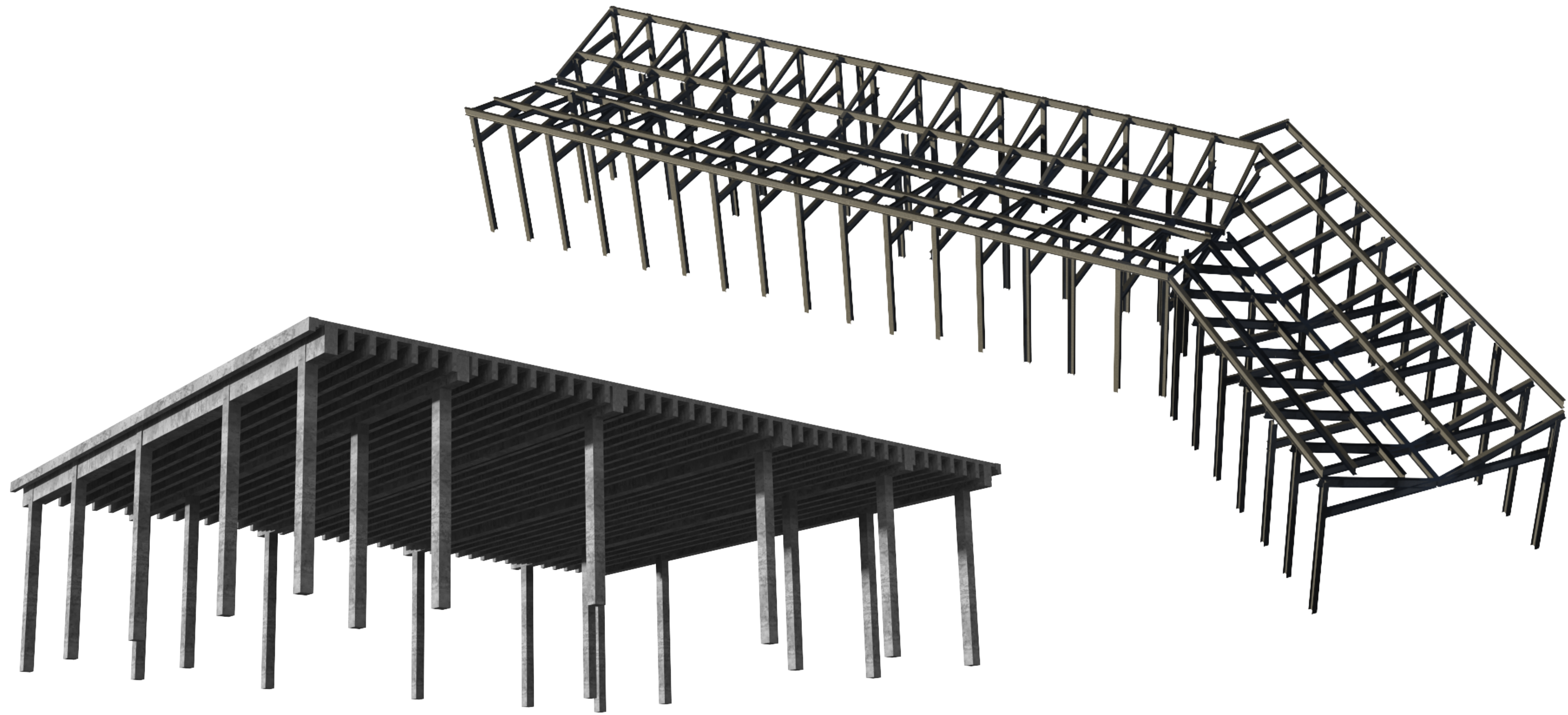


Gallery

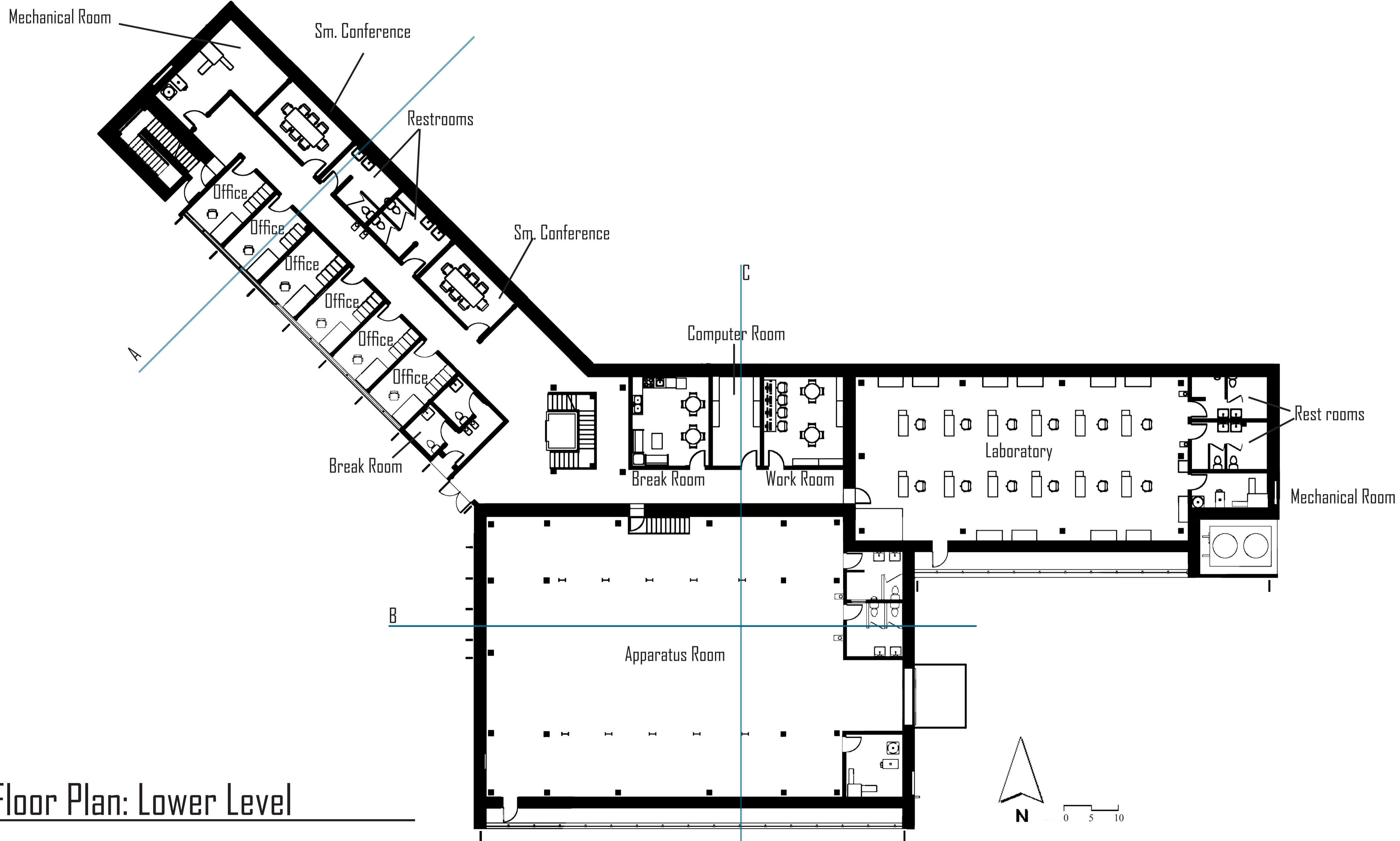


Details

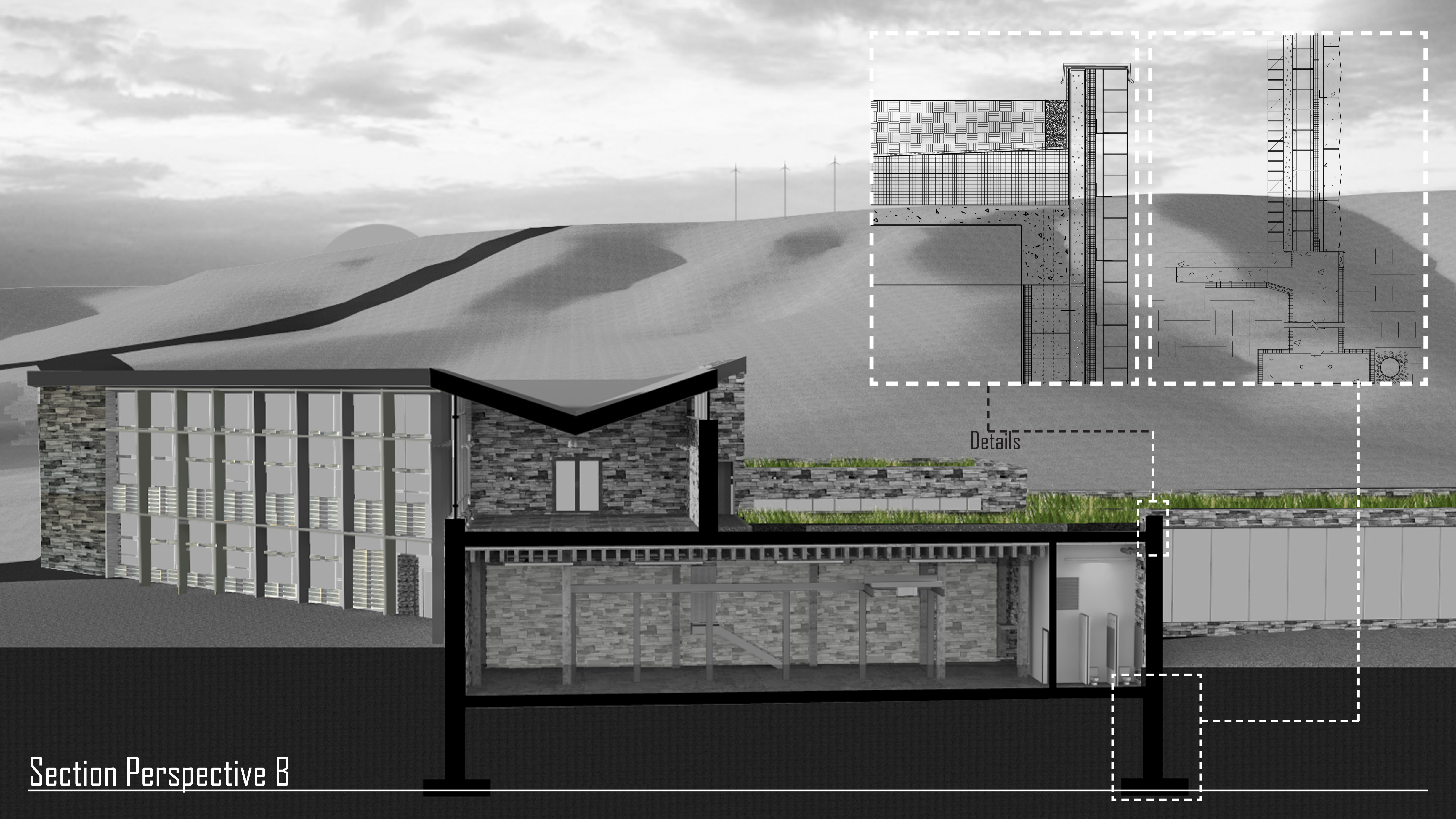
Section Perspective A



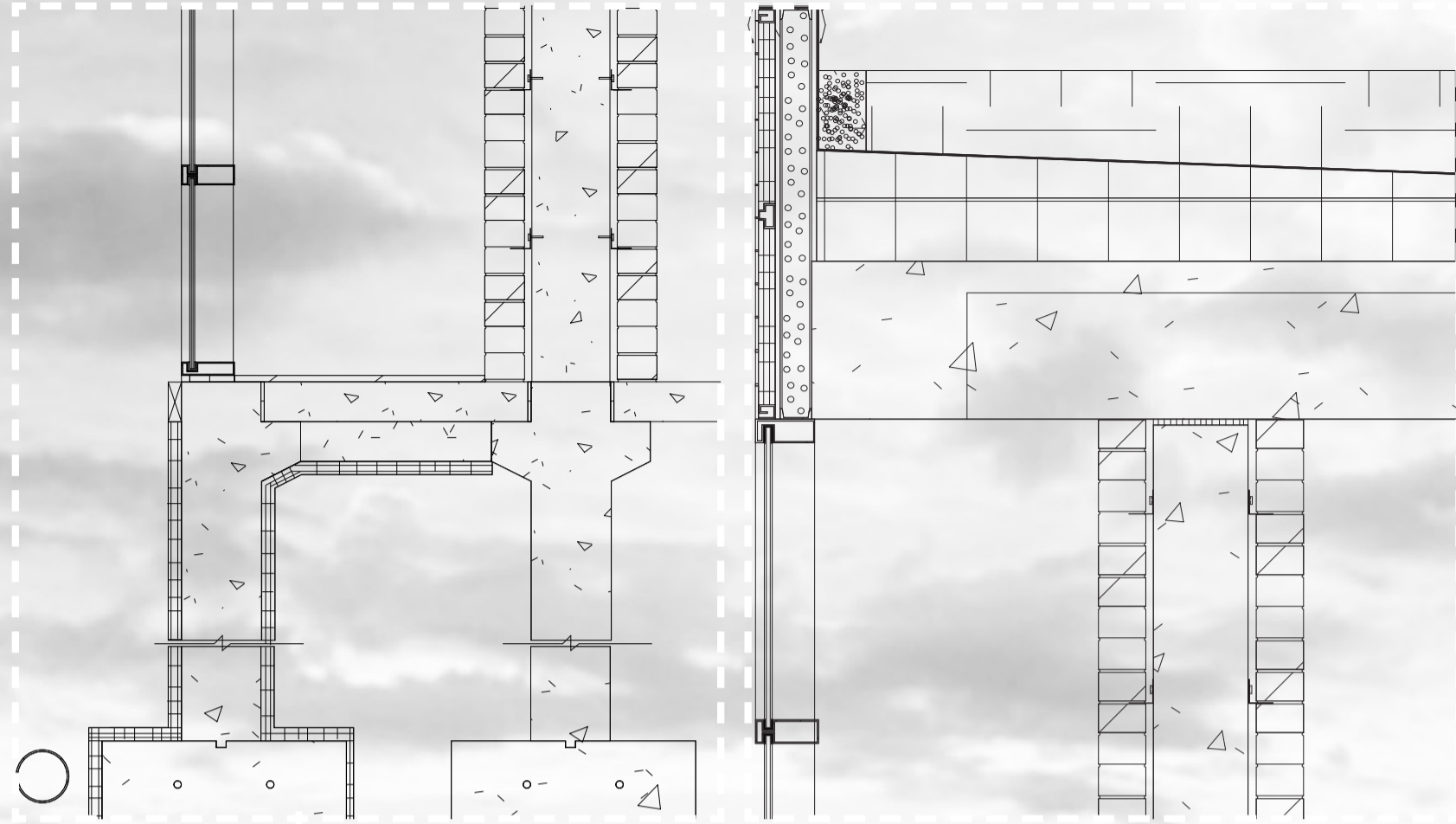
Building Structure



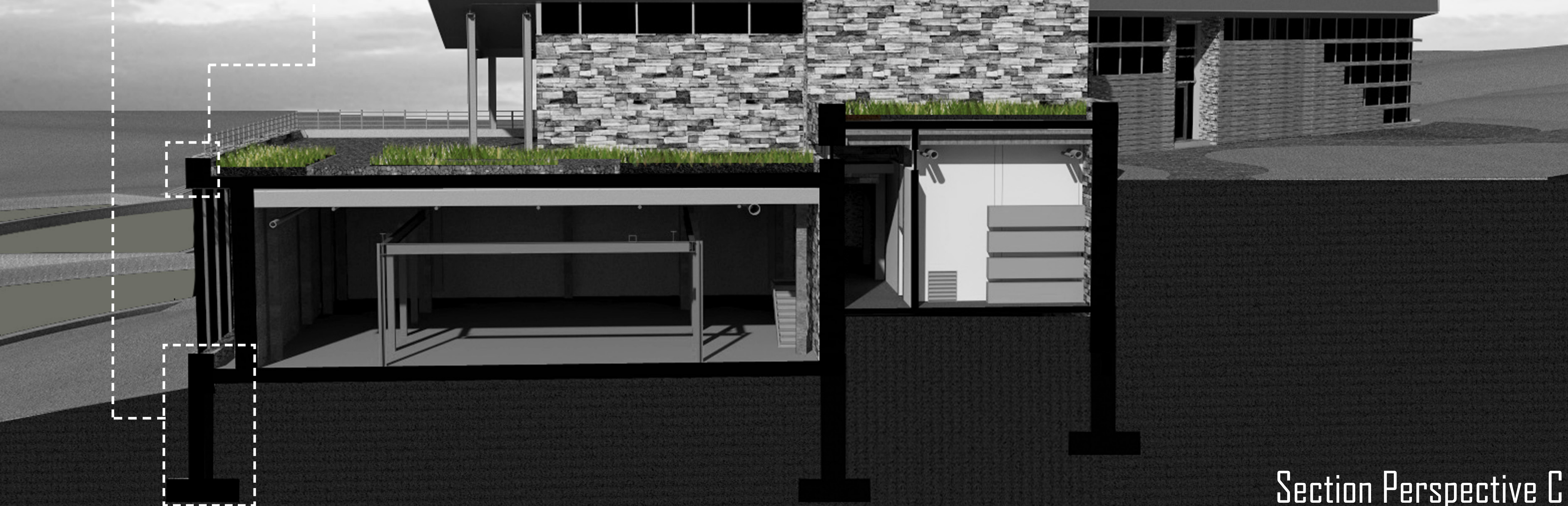
Floor Plan: Lower Level



Section Perspective B



Details



Section Perspective C



Laboratory



Exterior View