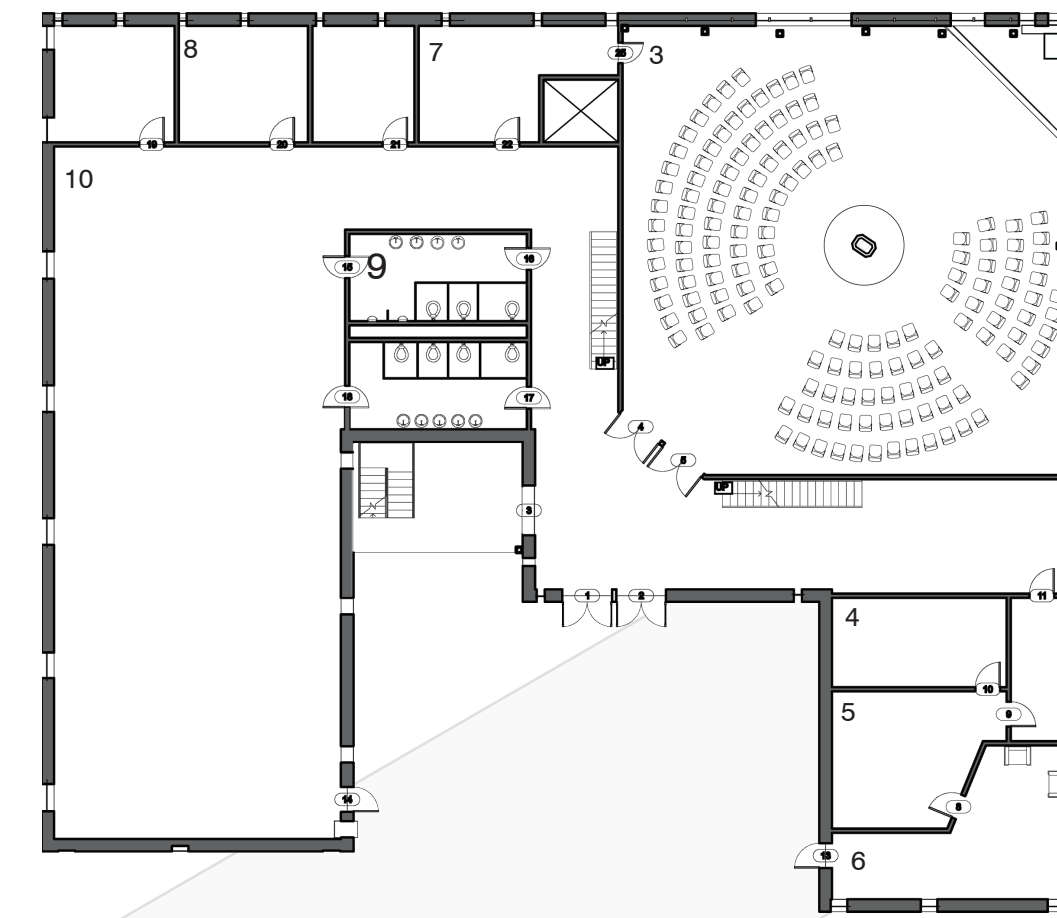
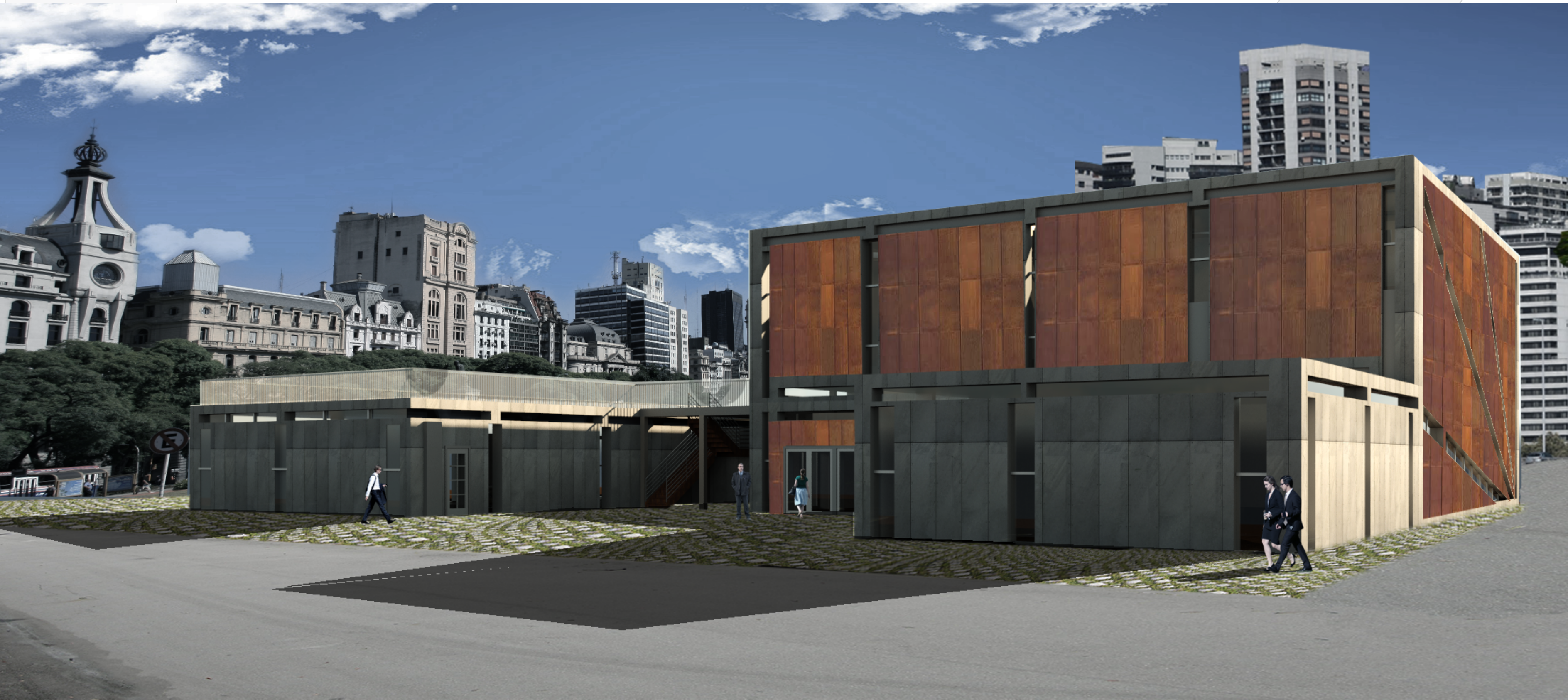


Beth Elohim

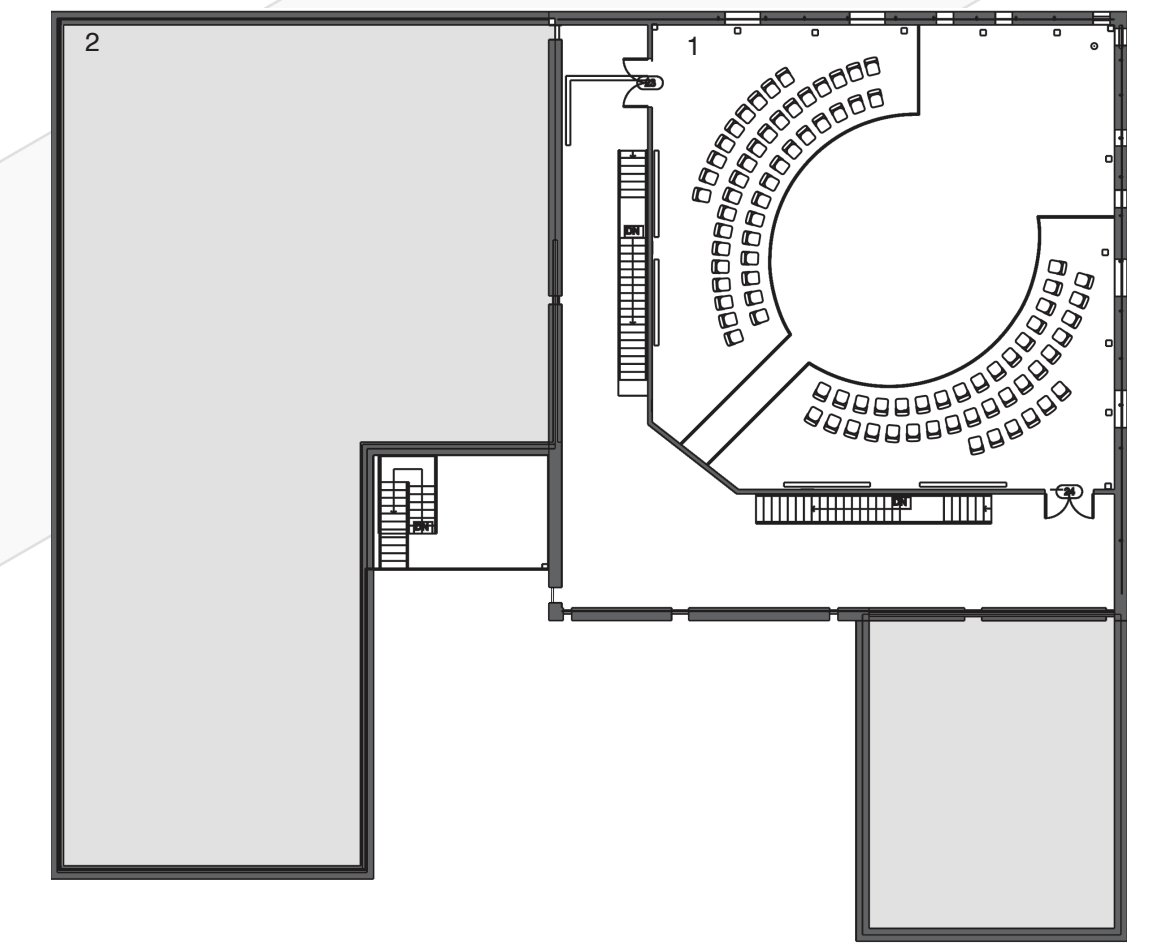
Villa Crespo, Buenos Aires

Lisa Ostlund



Level 1

- 3. Men's Worship Space
- 4. Mikvah (bath)
- 5. Changing Room
- 6. Reception
- 7. Rabbi's Office
- 8. Offices
- 9. Restrooms
- 10. Social Hall



Level 2

- 1. Women's Worship Space
- 2. GreenRoof/ Gathering Area

Sustainable Aspects

- Green Roof
- Natural Ventilation
- Timed Lights
- Permeable Walkway
- Corten Steel
- Re-Usable Materials

Religious Considerations

- Window forms draw from the Menorah
- Separate seating for men and women
- Bimah (speaking platform) in the center of the room, seating faces bimah
- Ark (holds the Torah) and worship space face Jerusalem (East)
- Mikvah (ritual bath) room
- Lights can not be turned on or off on the Sabbath:
 - Lights on timers for evening
- Eternal light above the Ark must always be on:
 - Illuminated by natural light by day, timed light by night

