

grand forks art museum

ali alqattan
fall 2012
arch771 - regin zehraen

the design intent came along with my first visit to the museum. the experience at first was the aesthetic sense of natural light through the skylights and the large windows along the east and west walls. i felt that this beauty of natural light should be celebrated at a next level. regin and mike christenson, ndsu professor, recommended studying "the mandelbrot set" since this theory deals with complex equation. it is related to mine because i wanted to treat the corner of the building symmetrically. the result of my understanding to "the mandelbrot set" inspired my design very effectively. anf i loved it!

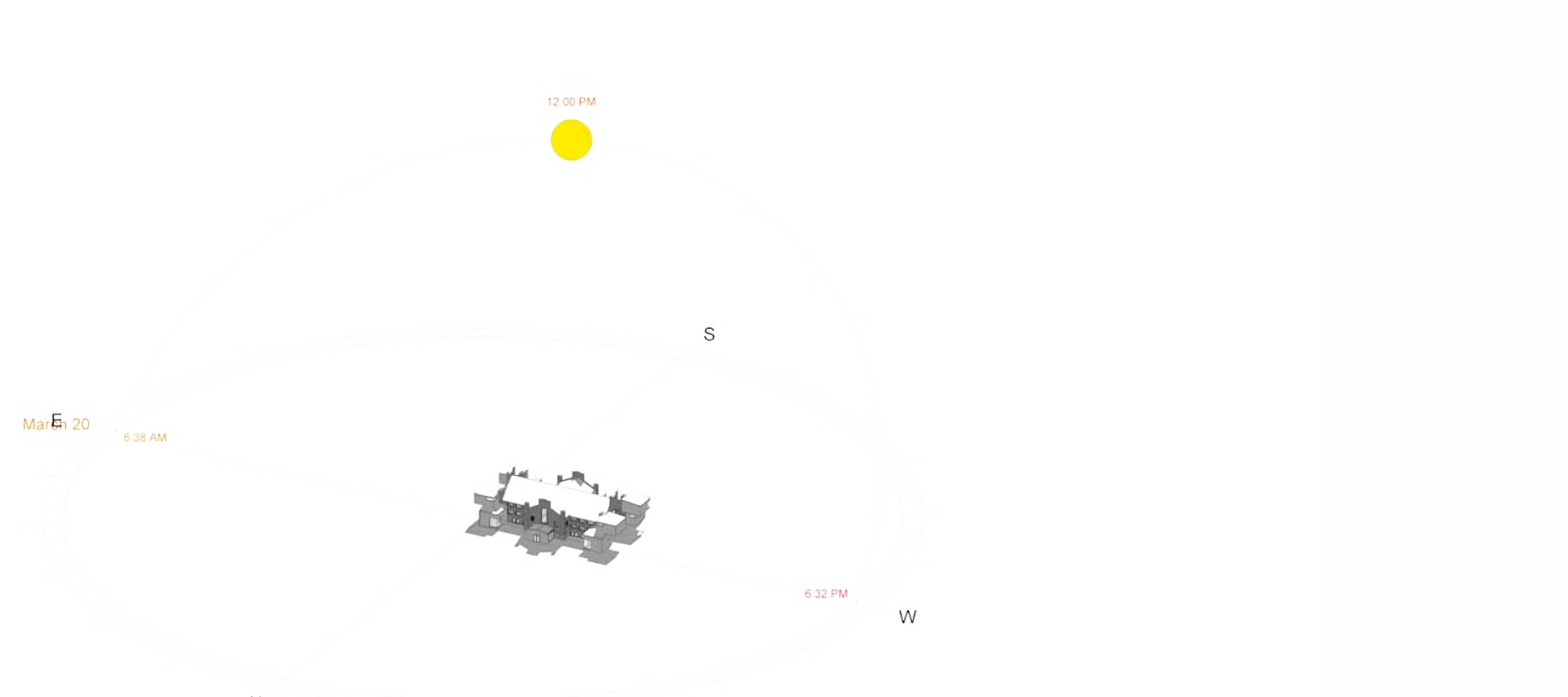




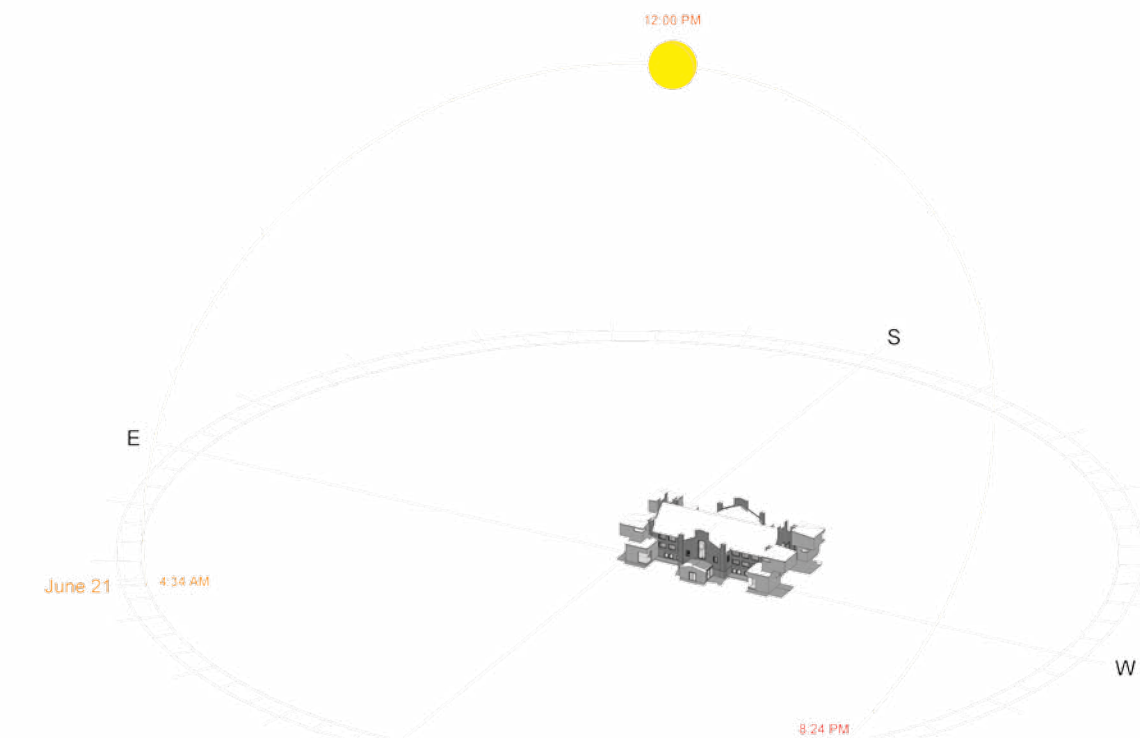
lower addition section

front facade elevation

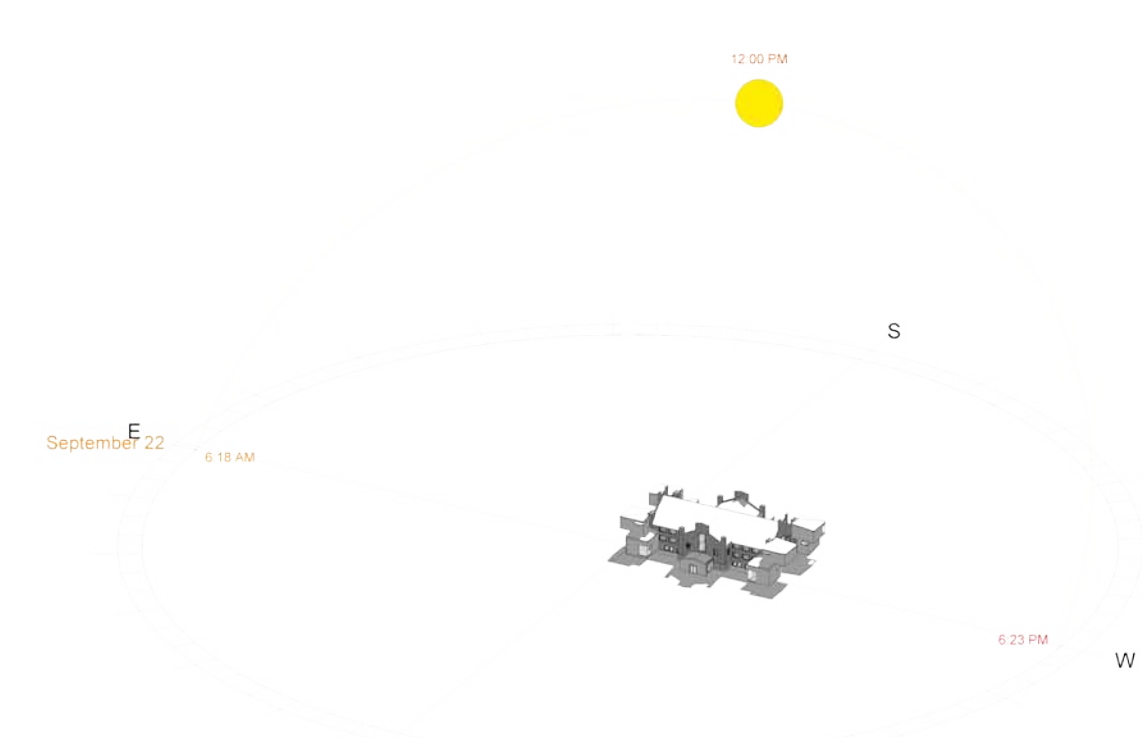
upper addition section



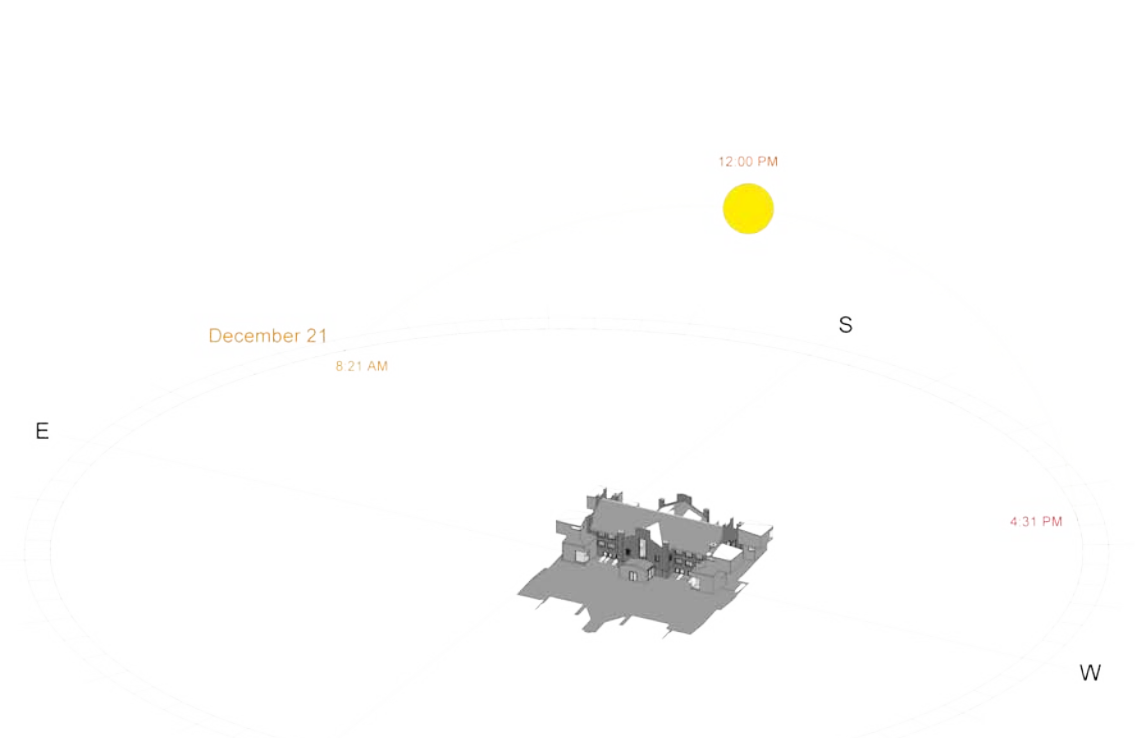
spring equinox



summer solstice



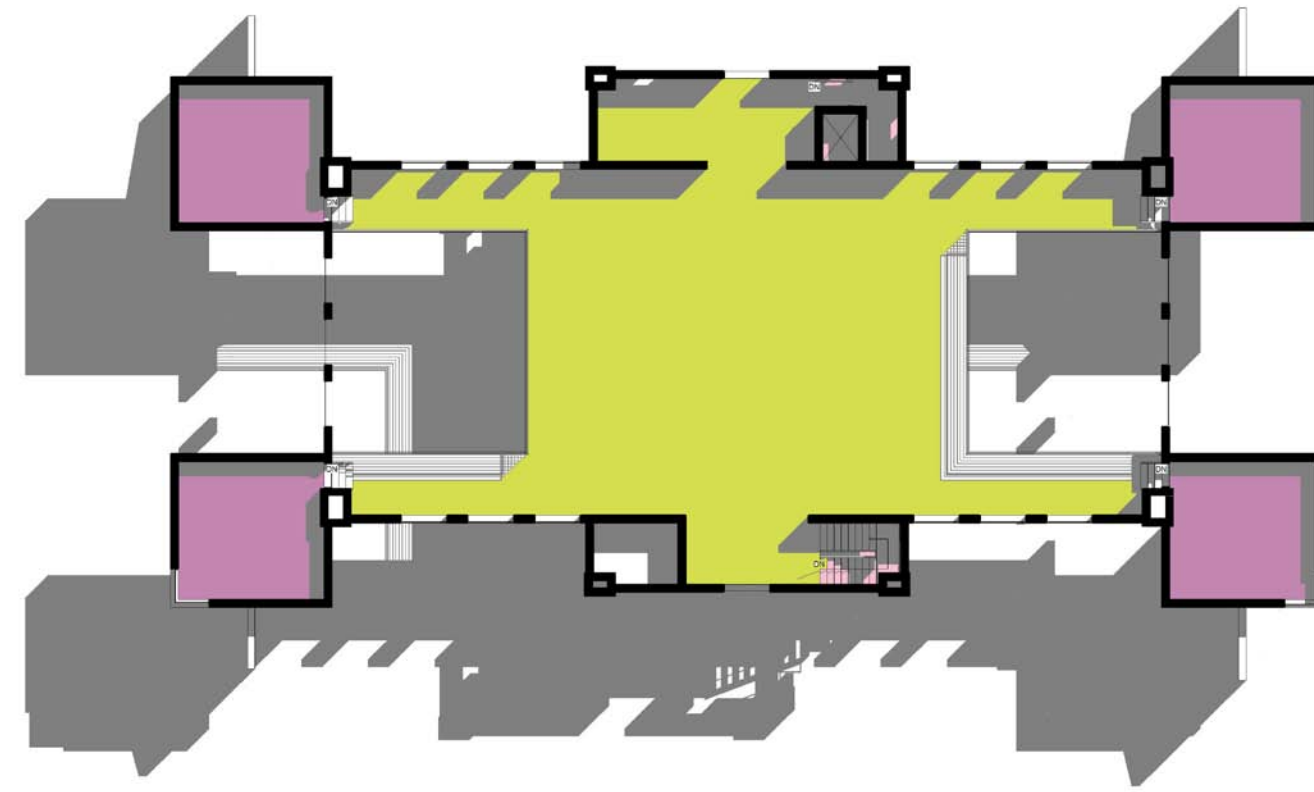
fall equinox



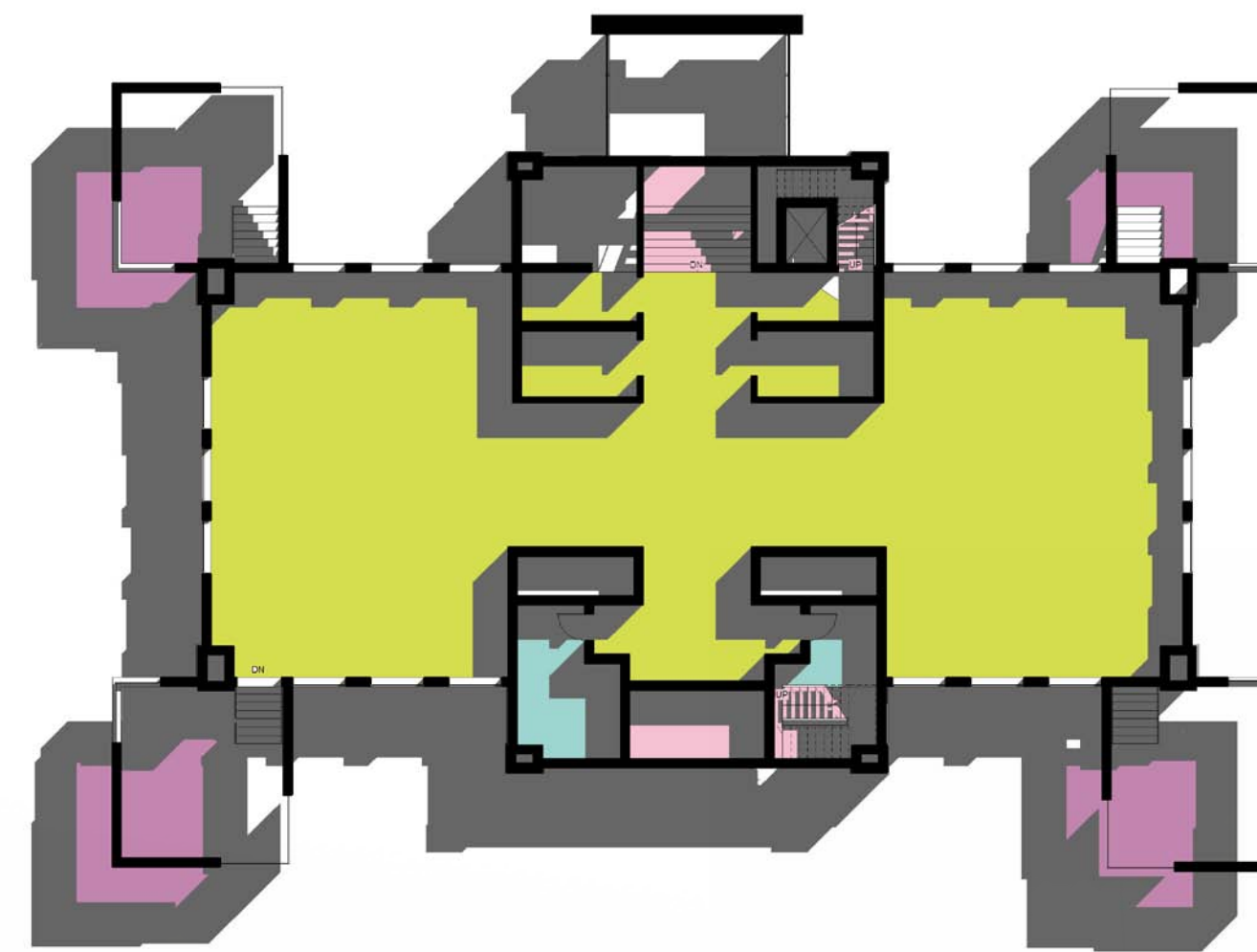
winter solstice



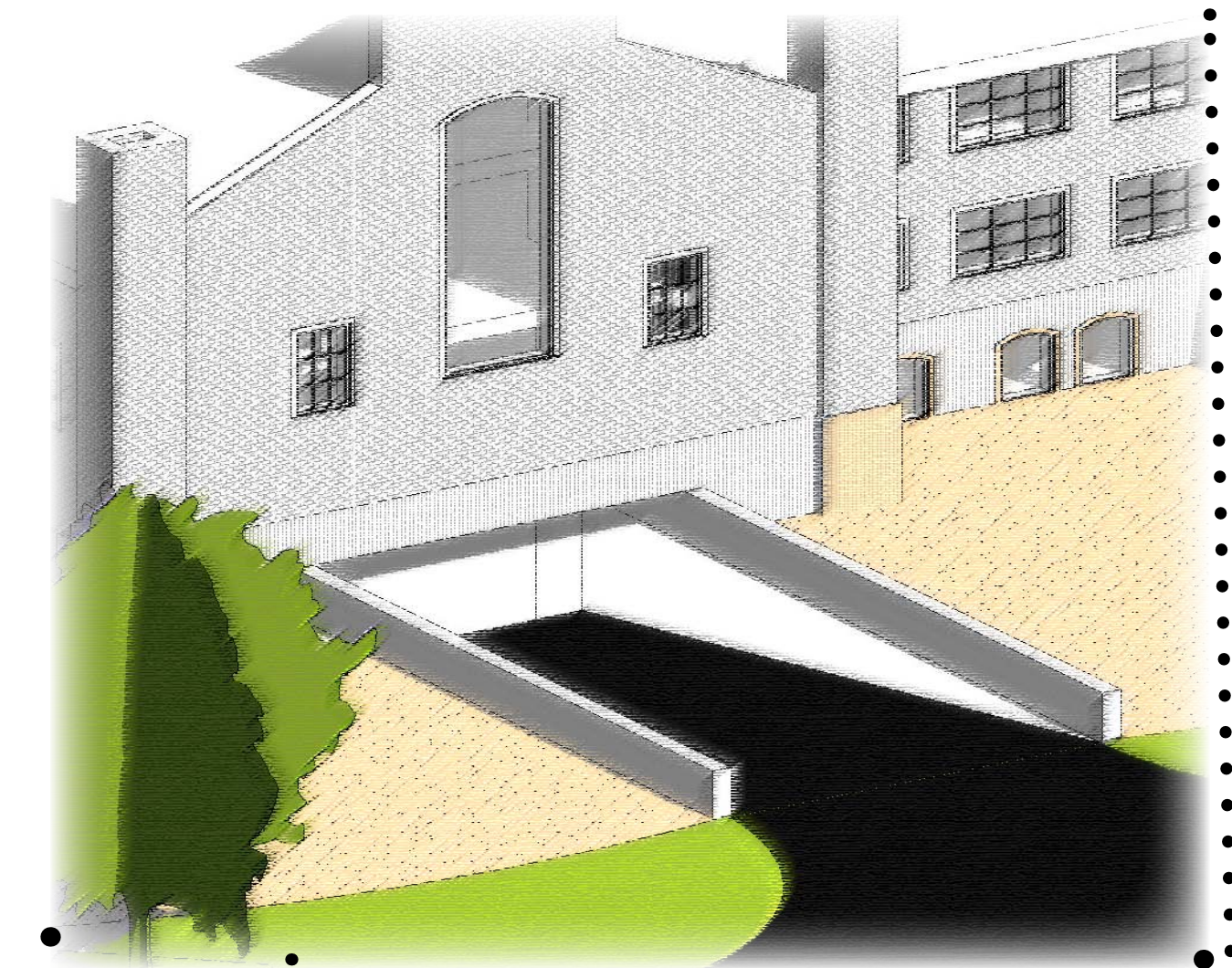
addition callout



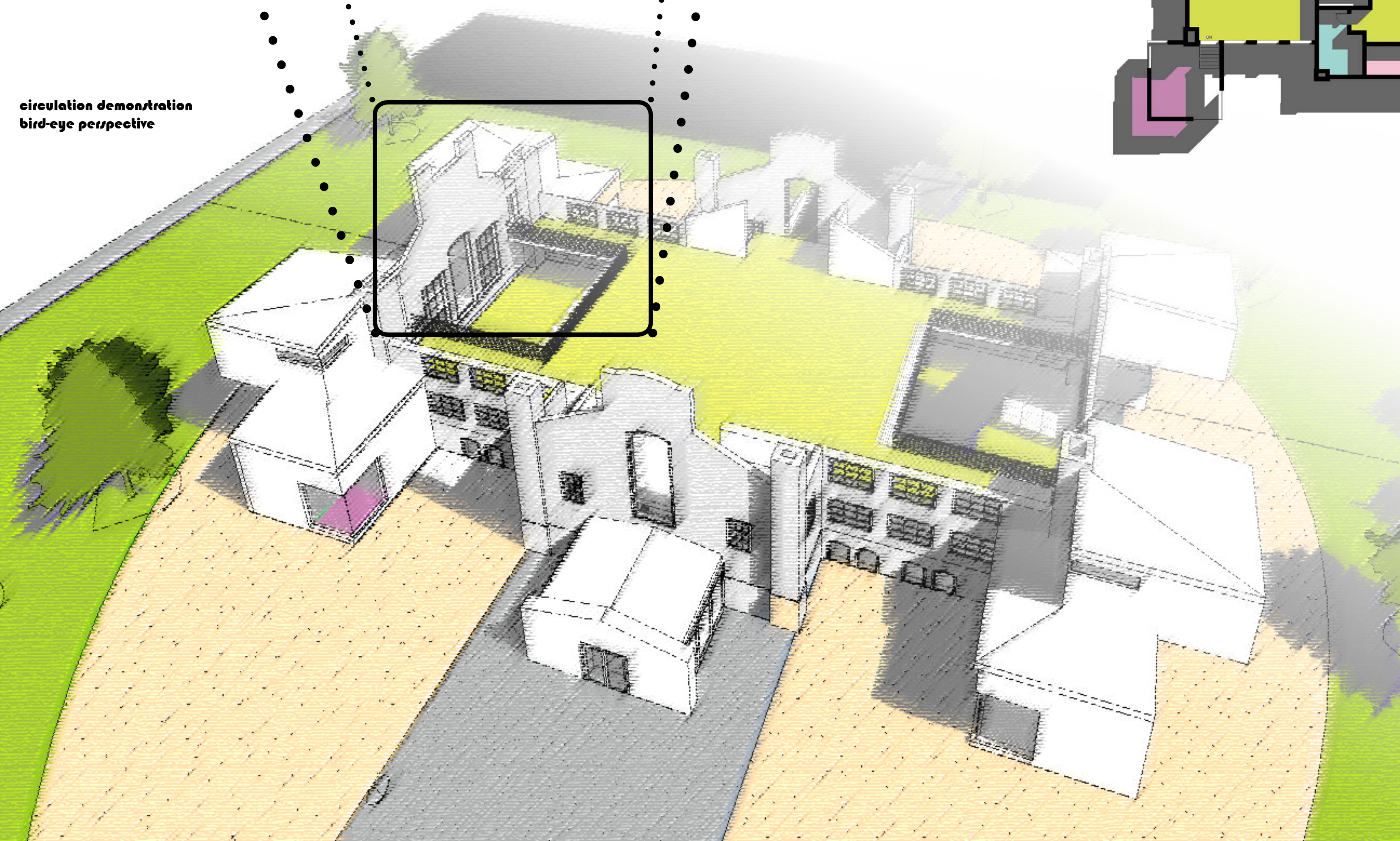
second floor plan



first floor plan



ramp callout



circulation demonstration
bird-eye perspective



vertical exterior circulation
ramp