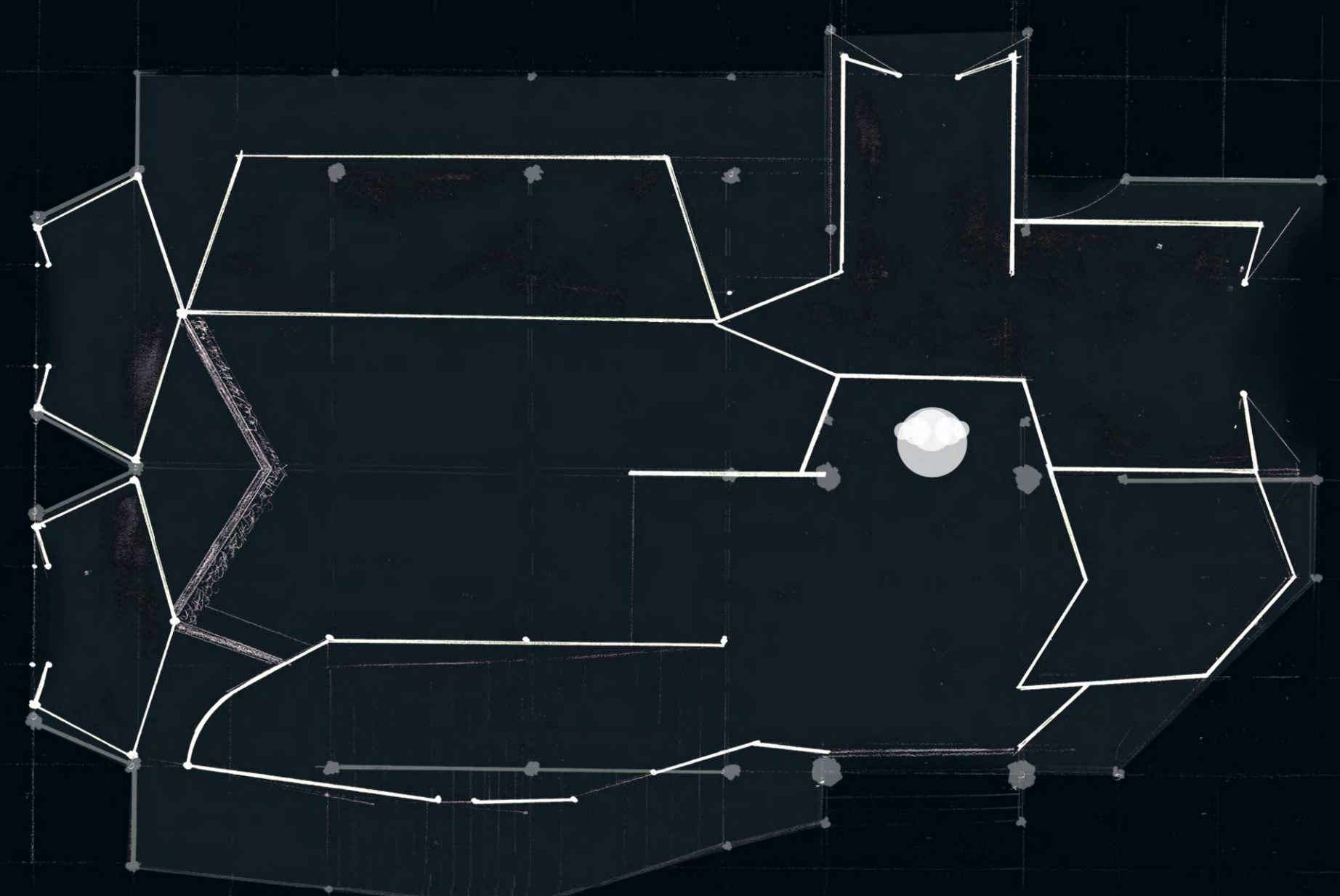
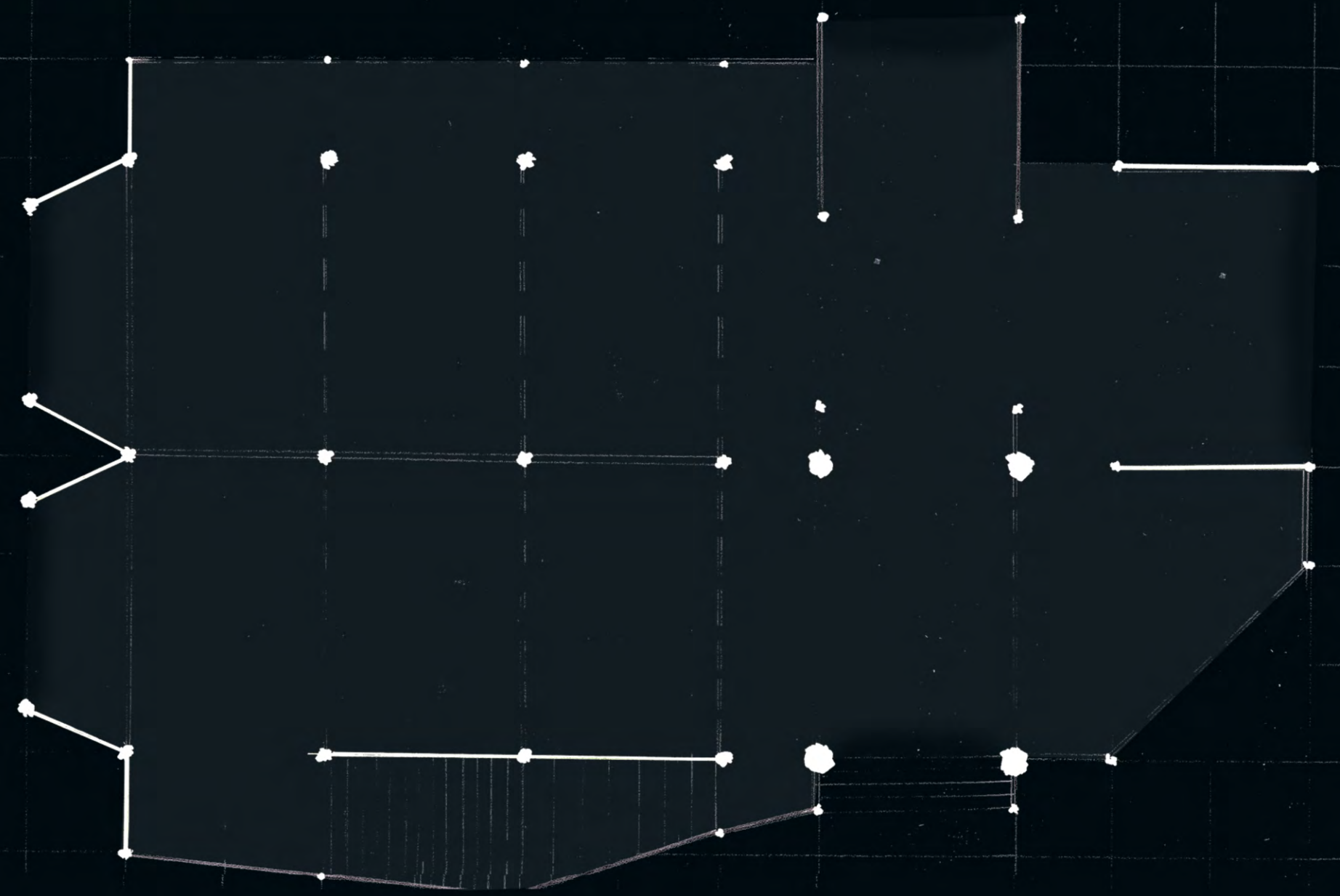
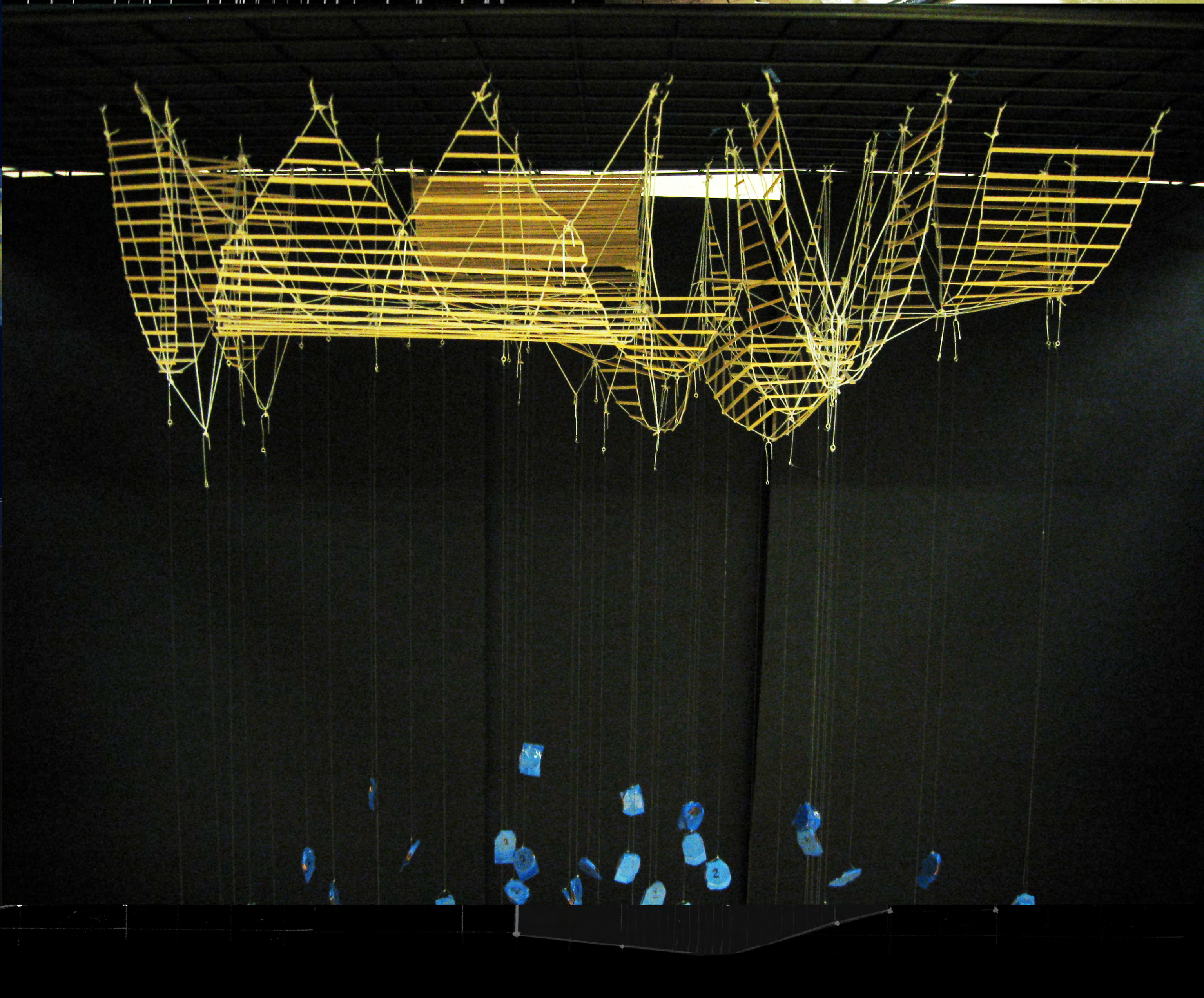
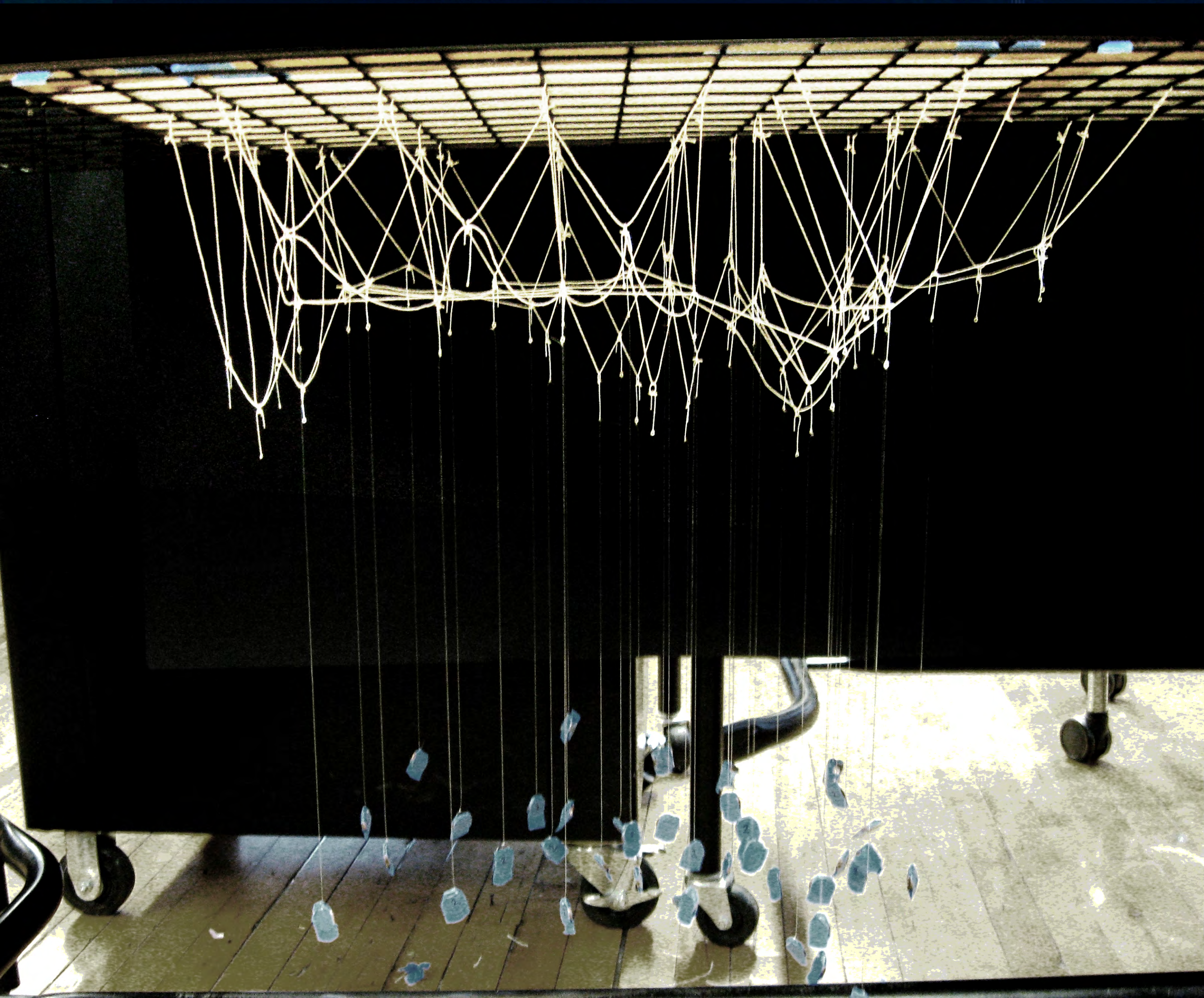
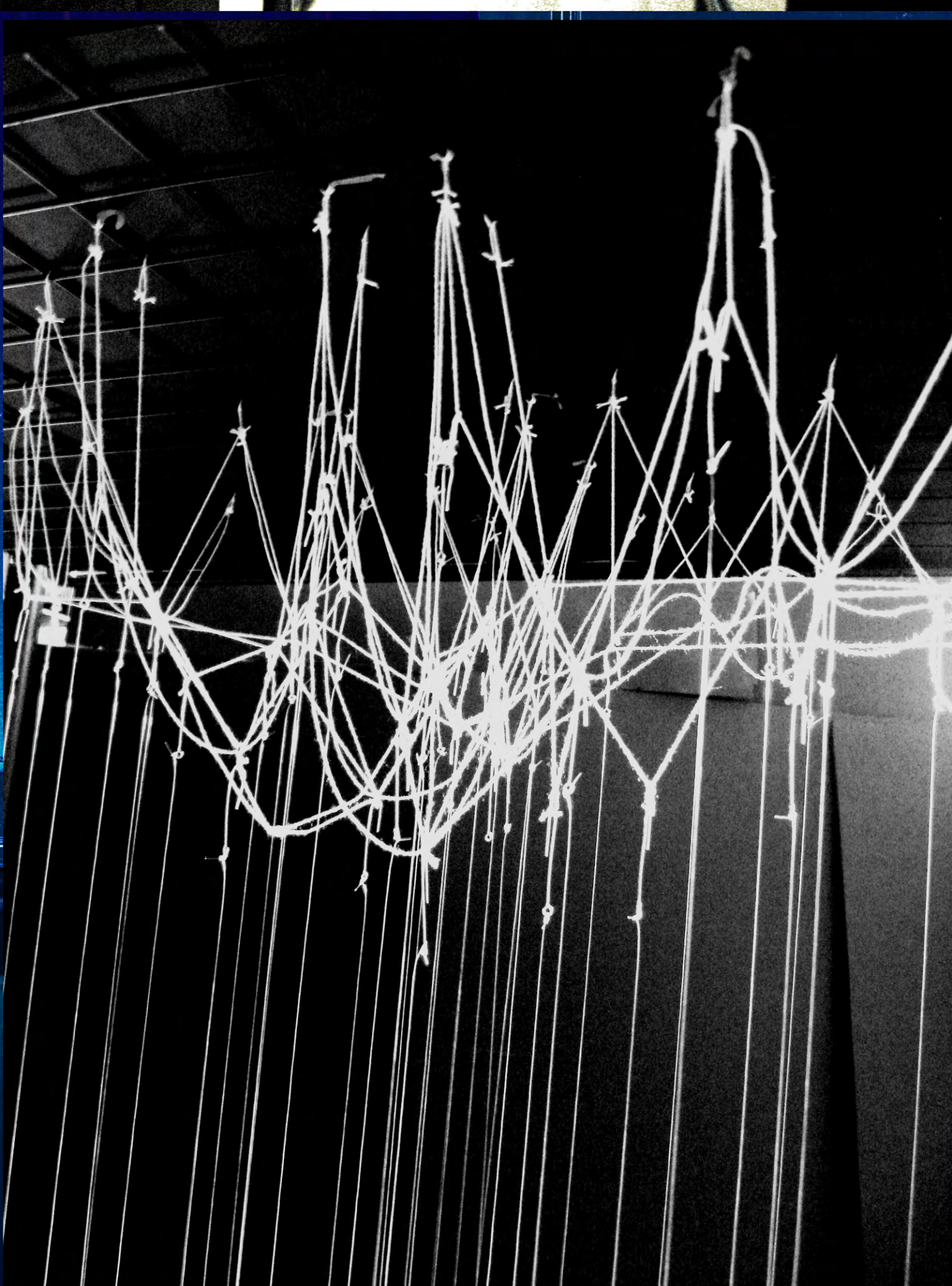
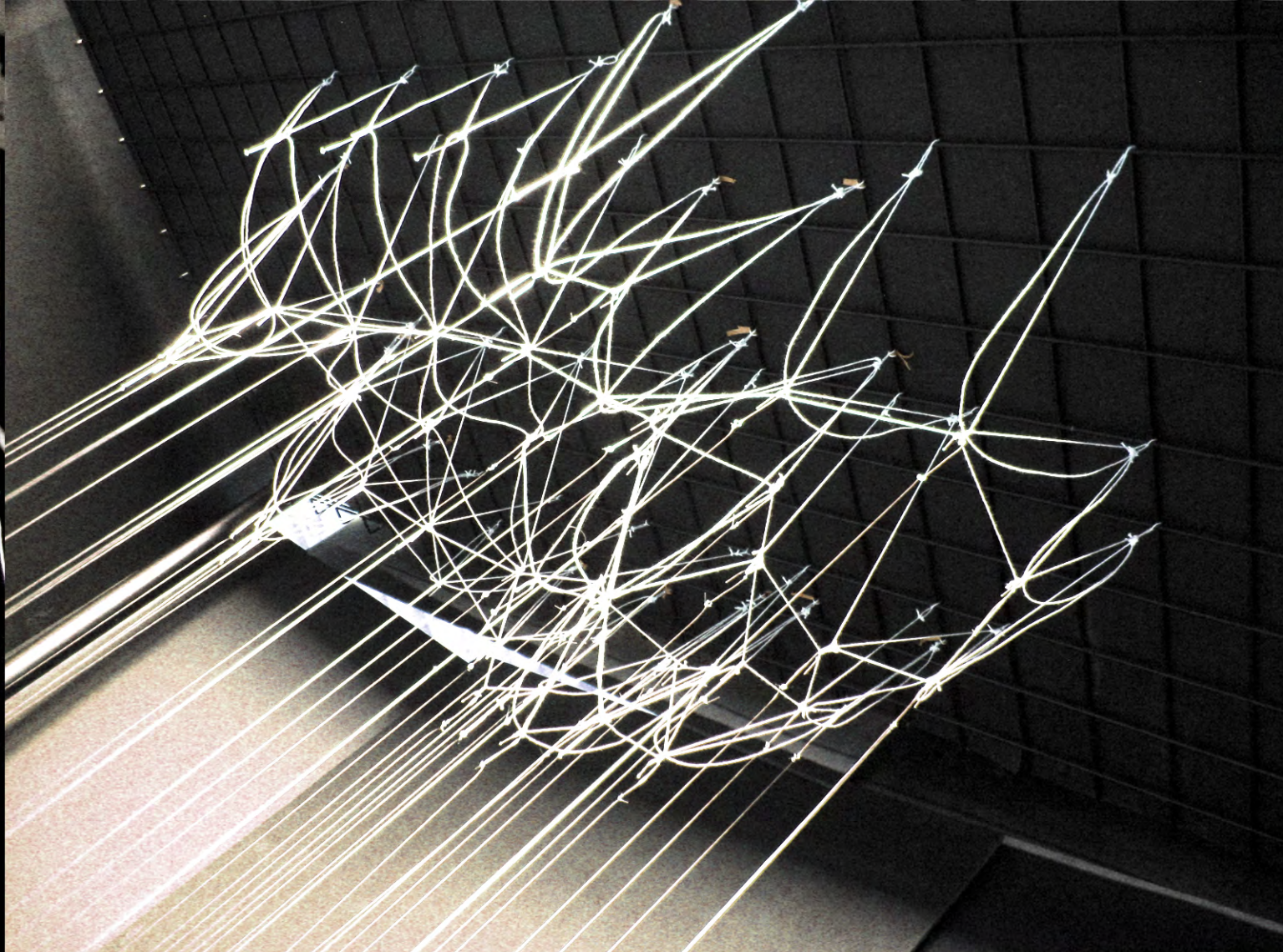
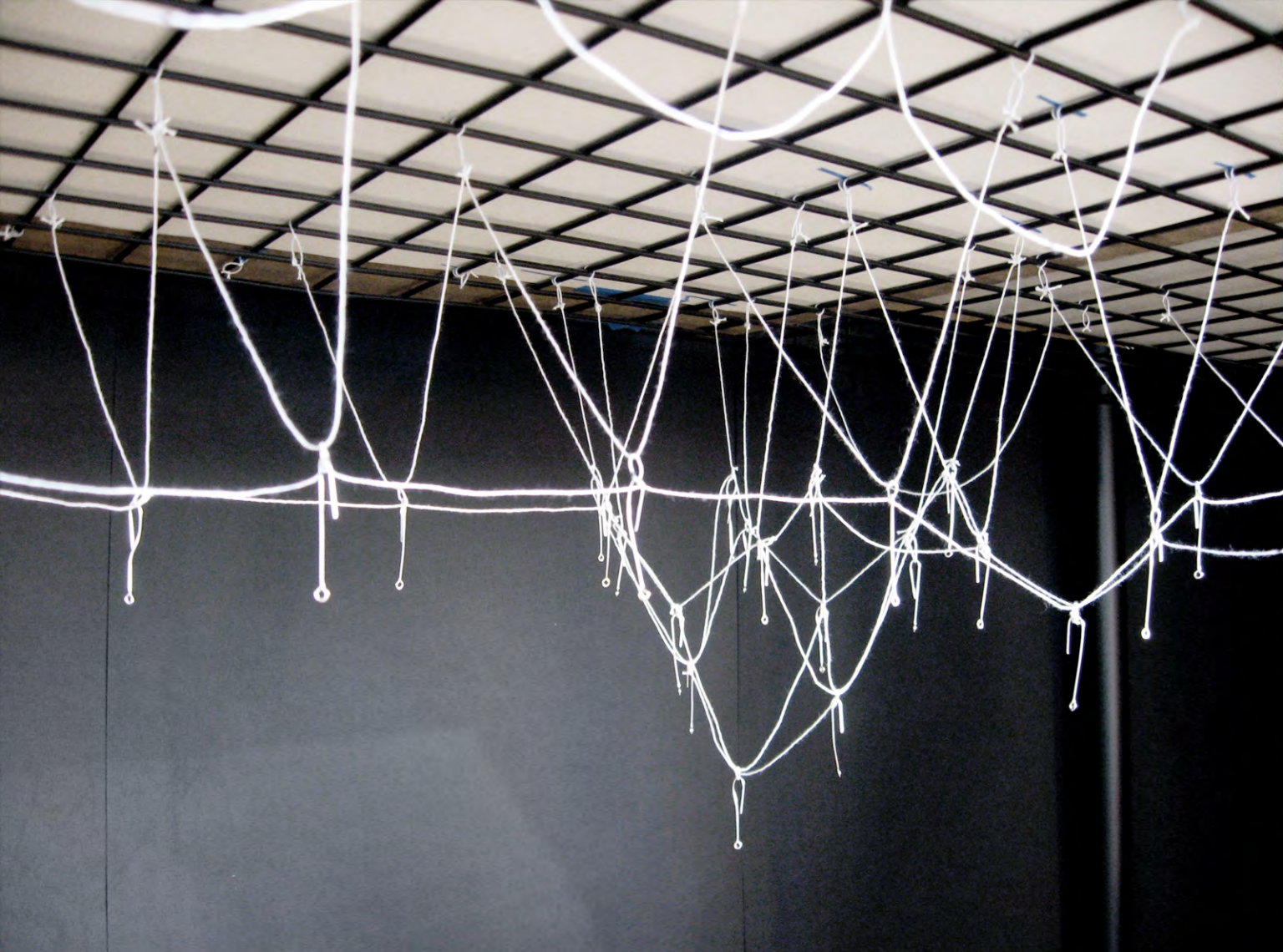


# Dubai

## Hindu Temple





# Arch 771

*Ari Anderson*

To create the design for this temple I used the method of suspended string made famous by Antoni Gaudí. This method optimizes the structural design to find the most efficient distribution of loads. The flexibility and constant change of the hanging forms made this method a dynamic yet difficult medium for design. Although the hanging model was difficult to work with, there is no other way to get such self responsive and structurally self correcting forms.

