

# WYOMING, MN

THE CITY OF WYOMING WAS FAIRLY SMALL UNTIL RECENTLY. IN THE LAST 10 YEARS THE POPULATION OF THE CITY HAS MORE THAN DOUBLED. IN 2000 THE CITY HAD 3,048 RESIDENTS. THE 2010 CENSUS RECORDED 7,791 RESIDENTS. THE 155% INCREASE IN POPULATION IS CREATING A LARGE DEMAND FOR HOUSING IN THE AREA. CURRENTLY ONLY SUBURBAN HOMES ARE BEING BUILT. THIS TREND IS SPREADING THE RESIDENTS EVEN FURTHER FROM THE CITY'S CENTER AND WEAKENING IT'S DOWNTOWN. THE CITY RECOGNIZES THIS OCCURRENCE IN ITS COMPREHENSIVE PLAN FROM 2009 AND STATES A DESIRE TO REINVIGORATE THE AREA.

THIS PROJECT SEEKS TO KICK-START A REDEVELOPMENT OF WYOMING'S DOWNTOWN BY INSERTING PEOPLE AND NEW RETAIL AND OFFICE SPACE INTO THE AREA.

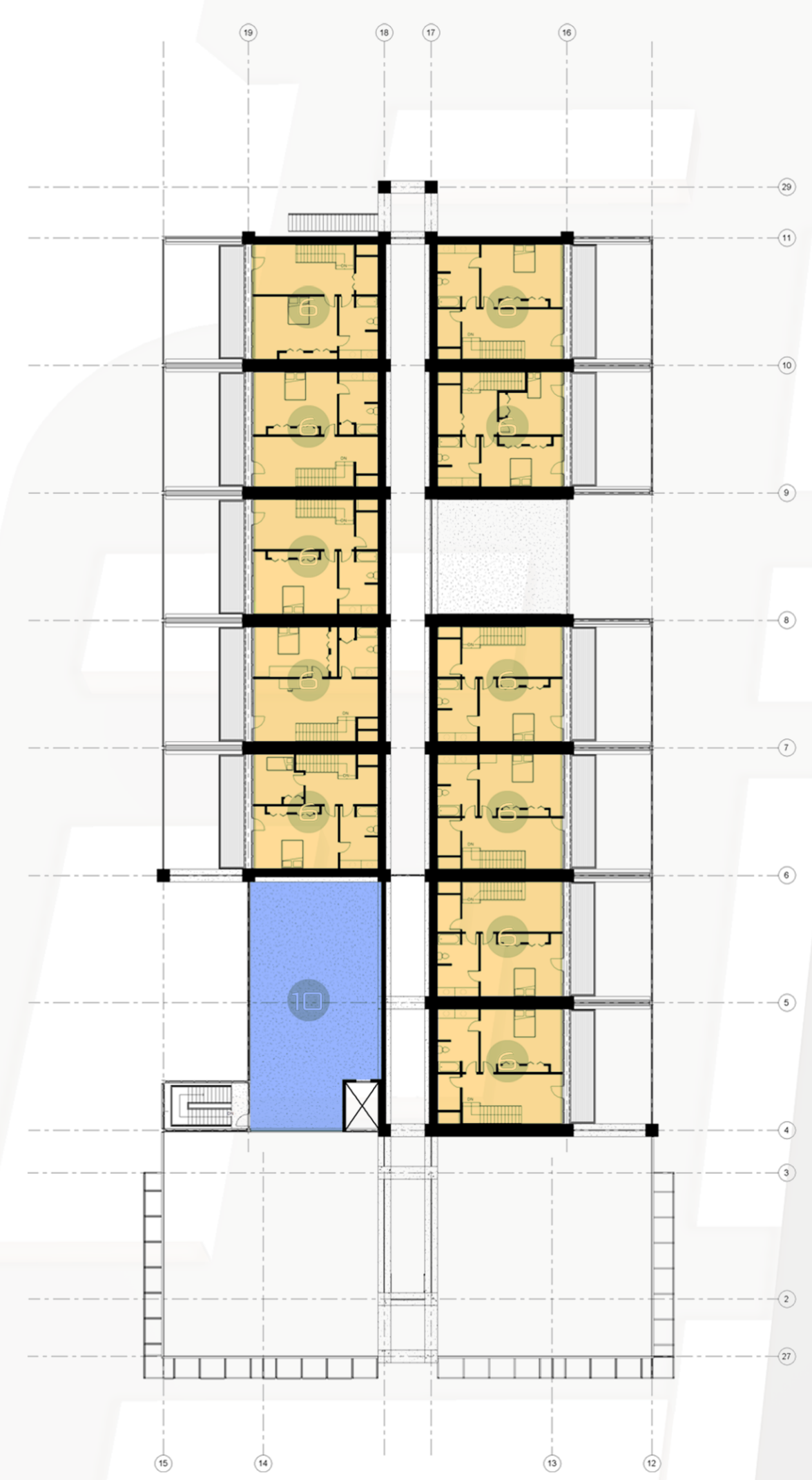
I-35

FOREST BLVD N

E VIKING BLVD

LEVEL 3  
LIVING SPACE  
6  
700SF

GREEN ROOF  
10  
1700SF



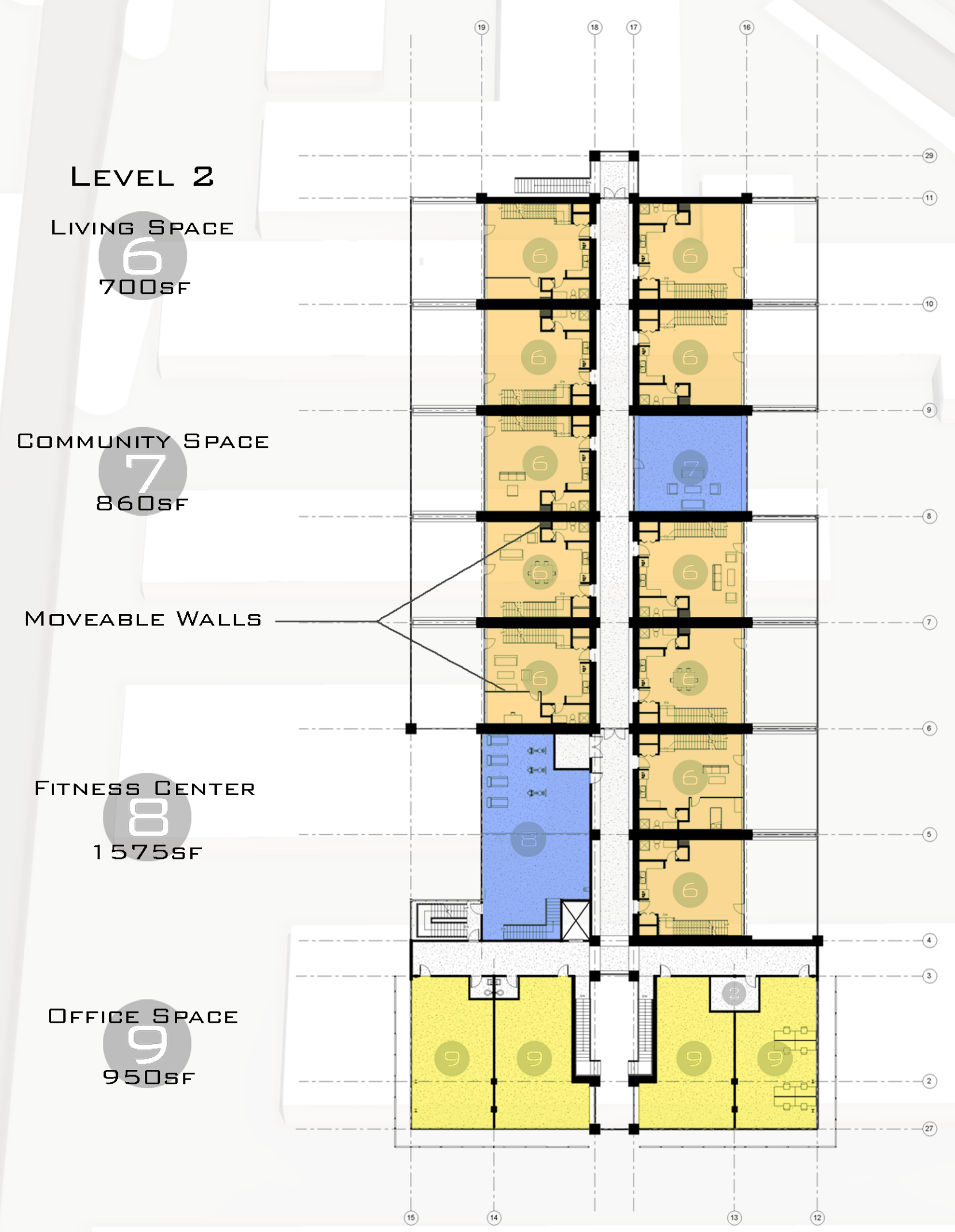
LEVEL 2  
LIVING SPACE  
6  
700SF

COMMUNITY SPACE  
7  
860SF

MOVEABLE WALLS

FITNESS CENTER  
8  
1575SF

OFFICE SPACE  
9  
950SF



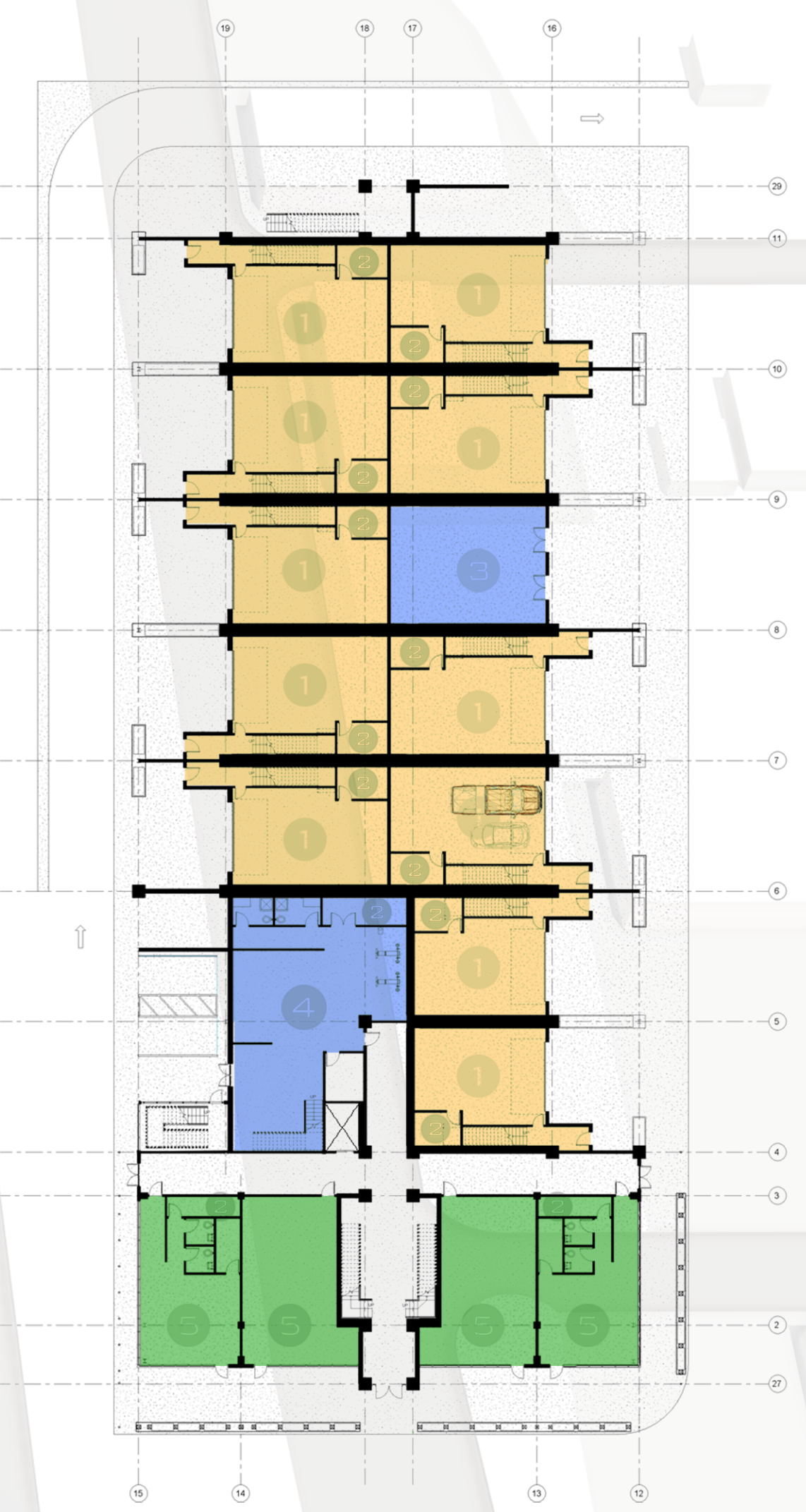
LEVEL 1  
GARAGE/WORKSPACE  
1  
750SF

MECHANICAL ROOM  
2  
90SF

WALL PANEL STORAGE  
3  
960SF

FITNESS CENTER  
4  
1500SF

RETAIL SPACE  
5  
880SF



- RESIDENTIAL
- COMMUNITY
- RETAIL
- OFFICE

