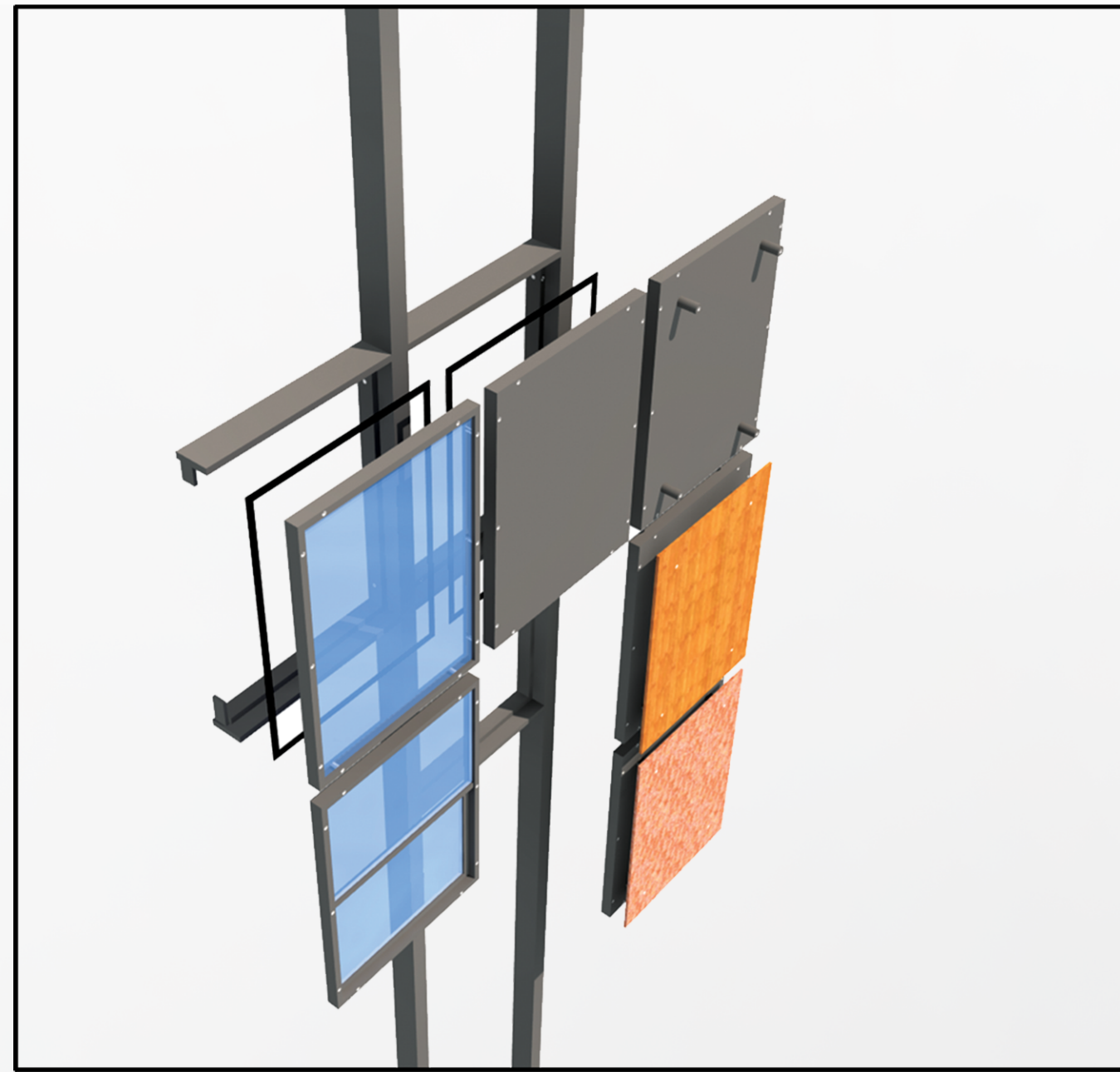
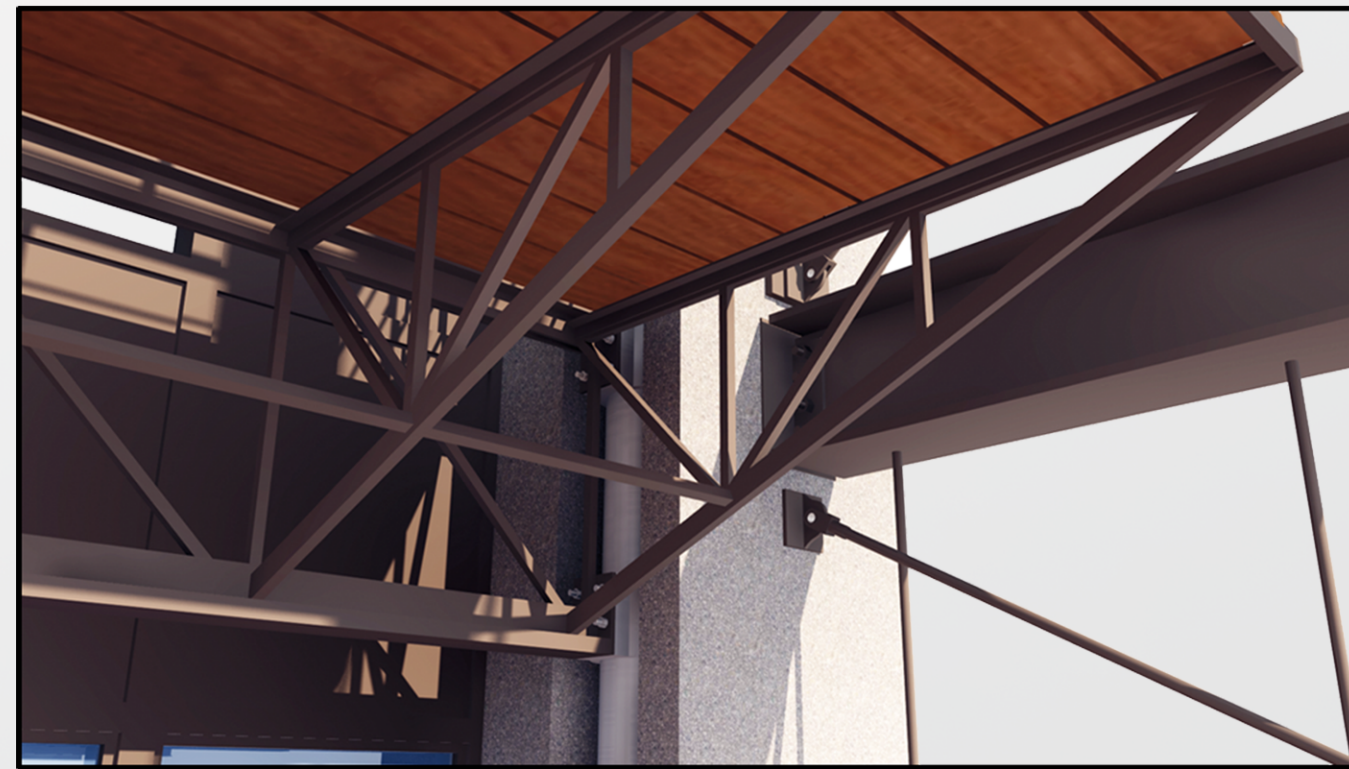


# EXPRESSION

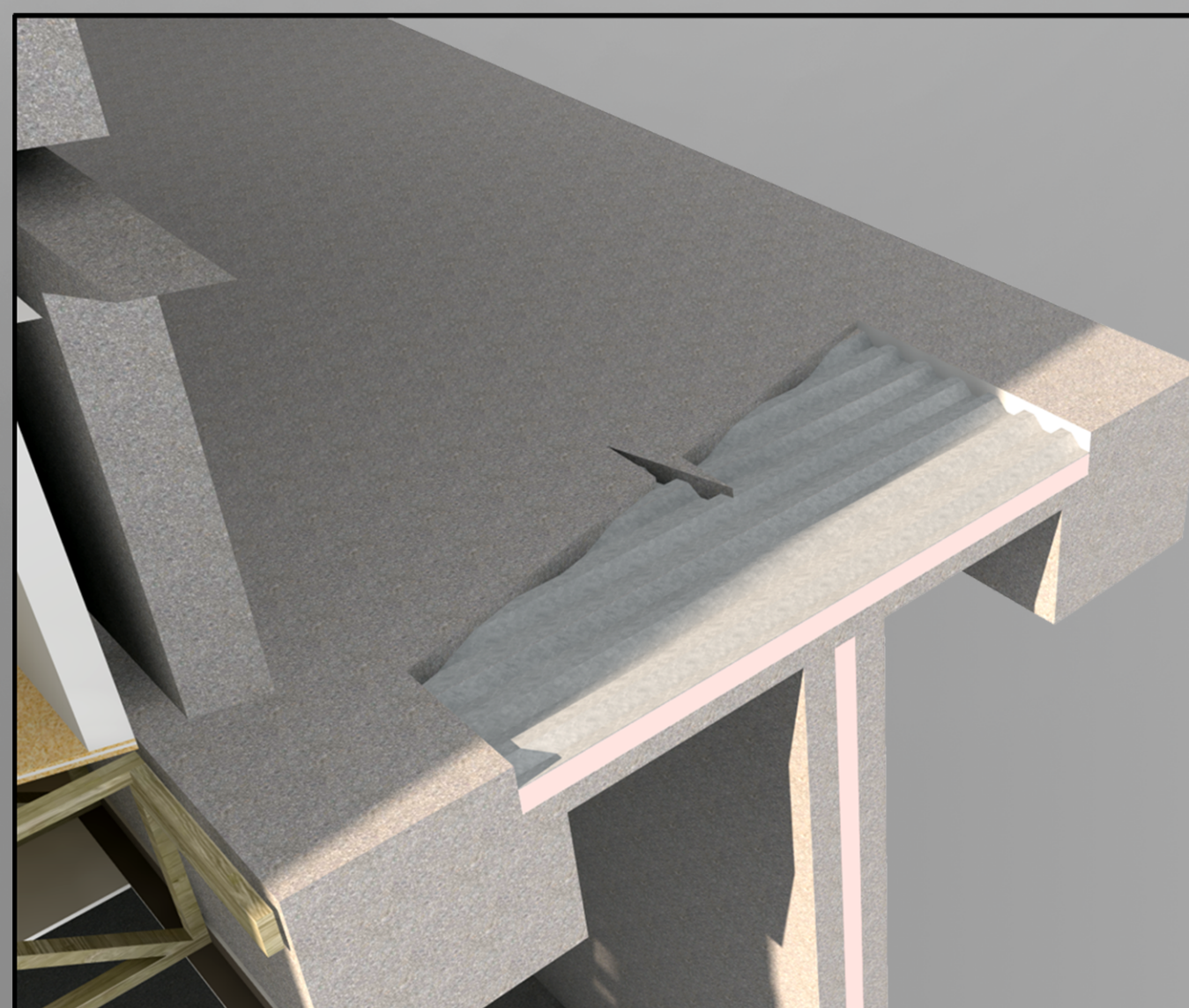
## RESIDENTIAL UNIT SECTION



THE EXTERIOR FACADE OF EACH RESIDENTIAL UNIT IS MADE UP OF INTERCHANGEABLE PANELS THAT THE OCCUPANTS CAN EASILY CHANGE TO SUIT THEIR NEEDS AND PERSONAL TASTE. THE SYSTEM ALSO ALLOWS THE RESIDENTS TO DIFFERENTIATE THEIR HOMES FROM ONE ANOTHER FURTHERING THEIR PERSONAL SENSE OF INDIVIDUALITY.



TO MAKE CHANGING PANELS EASIER, THE BALCONY RIDES ON LARGE LINEAR BEARINGS ALLOWING IT TO WINCH UP AND DOWN THE FACADE.



TO MINIMIZE MAINTENANCE THE CENTRAL CORRIDOR IS MADE UP OF A FINISHED CONCRETE-ON-METAL-DECK FLOOR AND PRE-CAST WALL PANELS.



SUSPENDED TRACKS IN THE CEILING OF THE MAIN LEVEL ARE FOR MOVEABLE 3' WALL PANELS THAT ALLOW FOR ADDITIONAL INTERIOR SPACES TO BE ADDED AS NEEDED.

WOOD WAS USED AS THE STRUCTURAL MATERIAL ON THE INTERIOR SO COMMON RESIDENTIAL CONSTRUCTION METHODS COULD BE USED IF THE RESIDENTS EVER WANTED TO REMODEL.

