

Floor Layout

- Lower Level
- A Train area 42500 ft.²
 - B Theater 7050 ft.²
 - C Theater storage 1300 ft.²
 - D Offices 130-150 ft.²
 - E Conference area 43000 ft.²
 - F Employee wc 24000 ft.²
 - G Locker Room 520 ft.²
 - H Lab mechanical 570 ft.²
 - I Lab 2000 ft.²
 - J Mechanical 2700 ft.²
 - K Art Storage 5450 ft.²

First Floor

- A Main Hall 16500 ft.²
- B Café / Gift shop 1000 ft.²
- C Rest rooms 550(x2) ft.²
- D Storage 500 ft.²
- E Tickets / Info 380 ft.²
- F Gallery 11000 ft.²

Second Floor

- A Circulation 8600 ft.²
- B Rest rooms 100(x2) ft.²
- C Gallery 1 6600 ft.²
- D Gallery 2 8000 ft.²
- E Tower Gallery 24500 ft.²

Path Detail



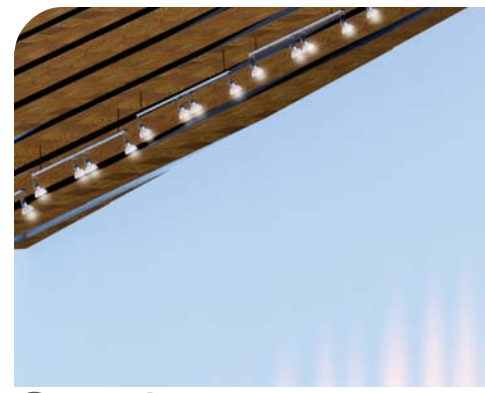
Inlaid metal tracks run along the floor, leading patrons through the various exhibition spaces

Lighting Detail



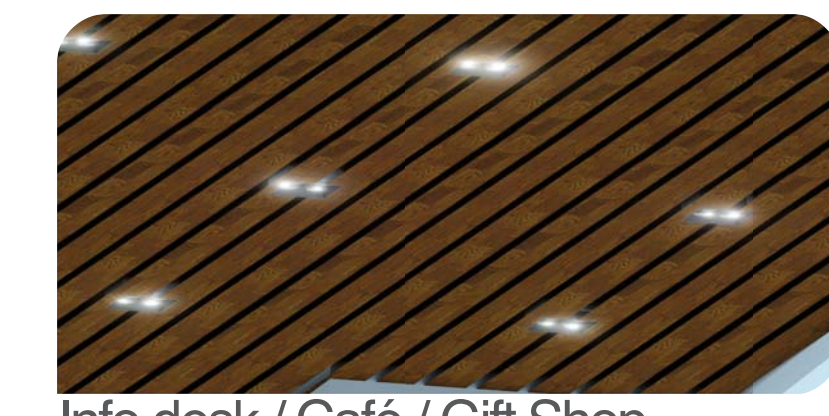
Primary lighting system is composed of hanging, fluorescent lights mounted behind a slotted, wooden, drop ceiling. The spacing of the slotted ceiling runs straight down the length of the building emphasizing every curve of the structure.

Main Hall



Gallery lighting fixtures uses a more adjustable, direct, track lighting system traditionally used in art museums.

Galleries

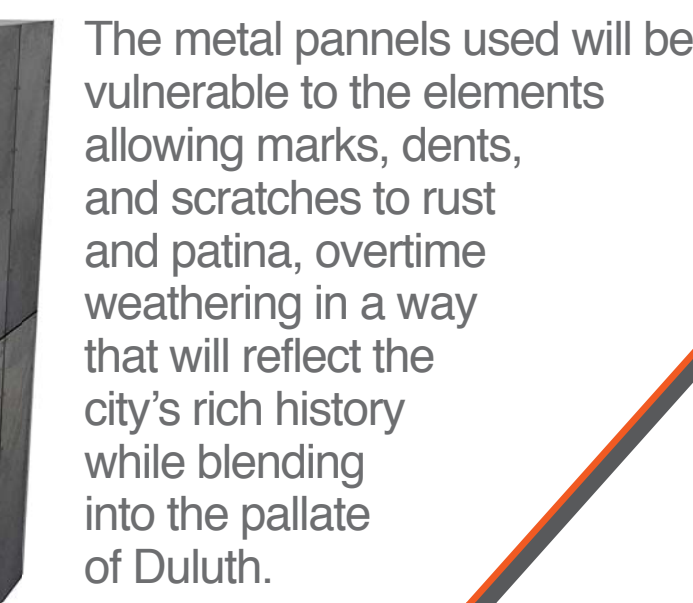


Areas directly adjacent to the main hall use a fixed, direct, lighting system composed of a grid of square recessed can fixtures.

Info desk / Café / Gift Shop

Exterior Wall Detail

- Prefinished panels
- Insulation
- Inner steel liner
- Interior wall frame
- Steel Connection
- Floor Slab
- Finished Sheetrock

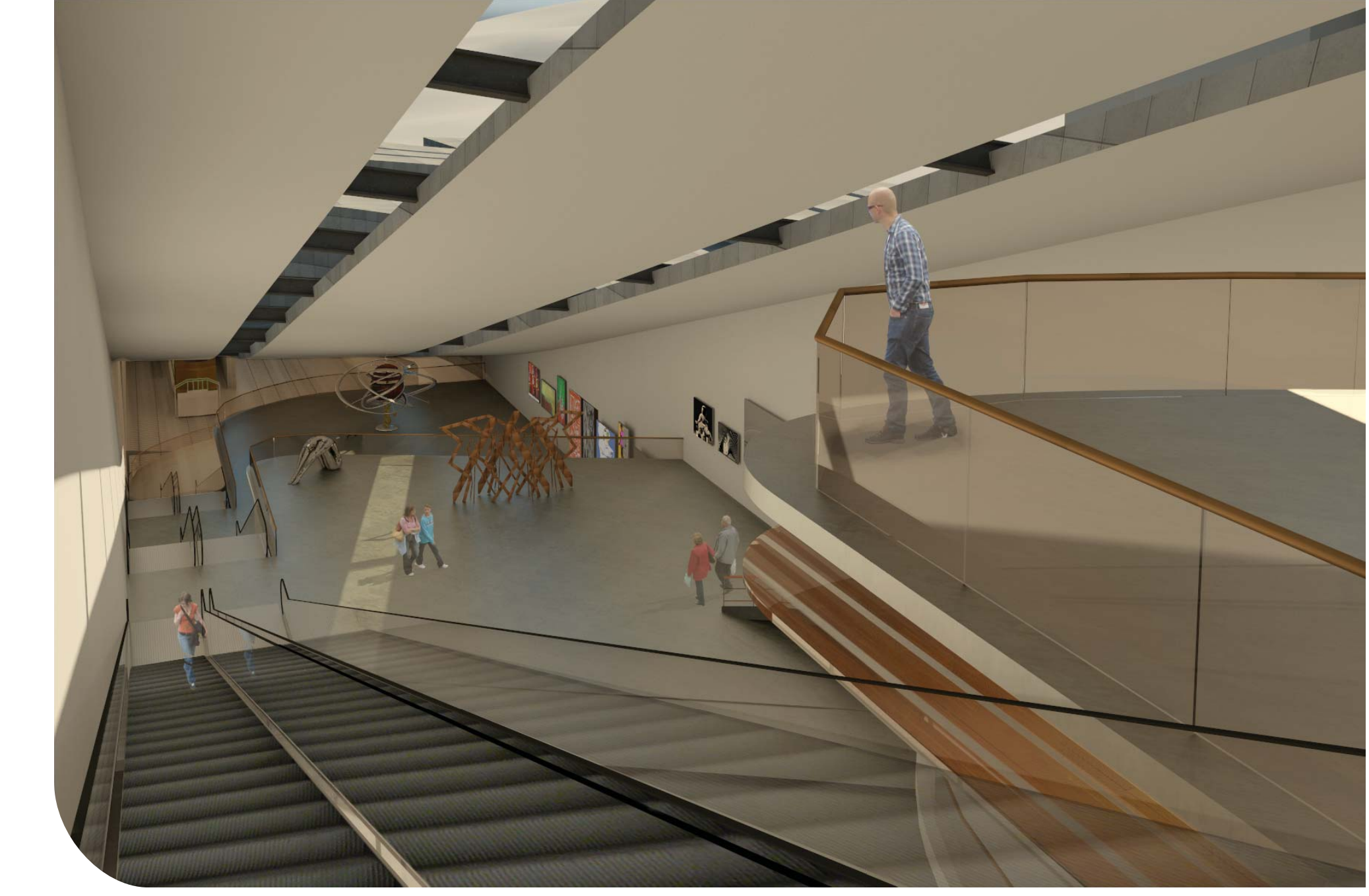


The metal panels used will be vulnerable to the elements allowing marks, dents, and scratches to rust and patina, overtime weathering in a way that will reflect the city's rich history while blending into the palette of Duluth.

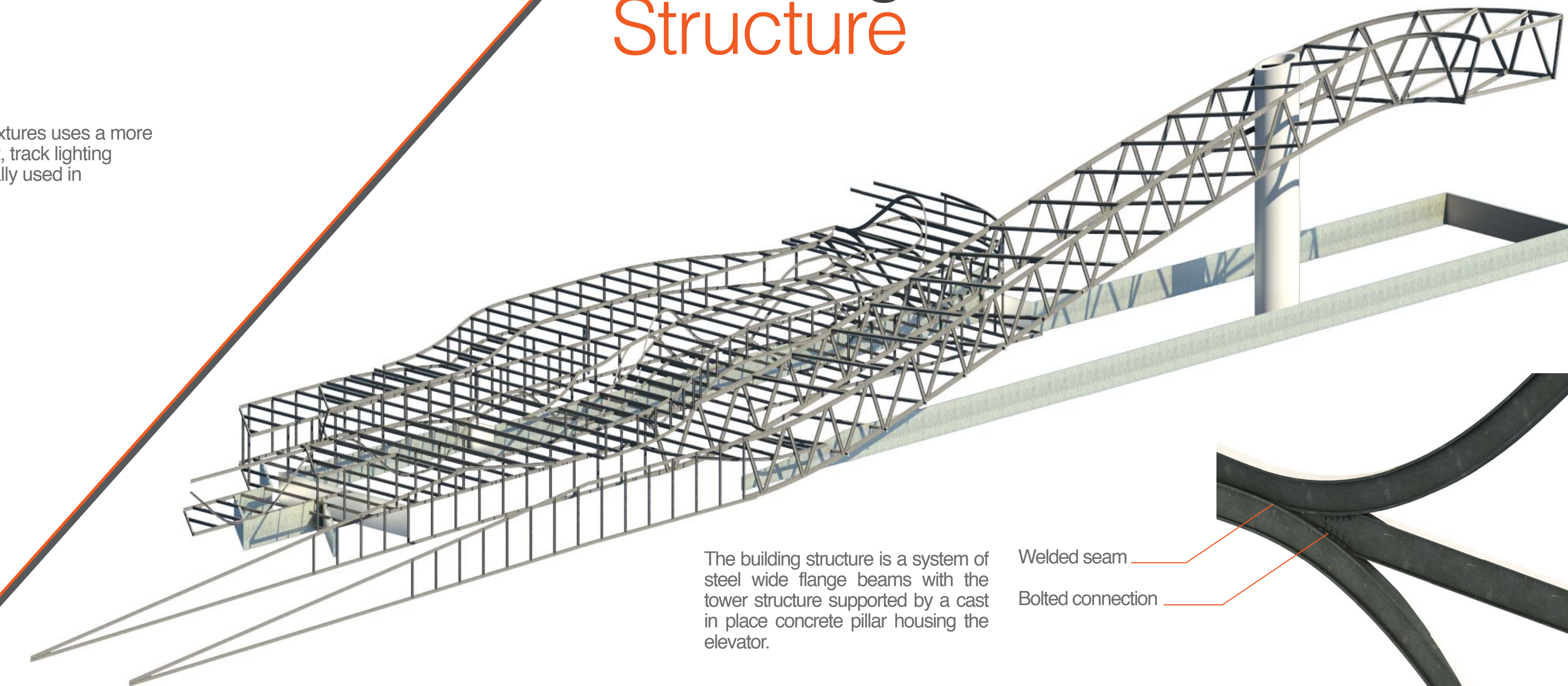
Building Details

Lookout Tower

Overlooking the greatest of the great lakes the lookout tower provides an amazing view of the historical lift bridge as well as views of Canal park and downtown Duluth, taking a unique approach towards presenting artwork, history, and scenery alike.



Building Structure



The building structure is a system of steel wide flange beams with the tower structure supported by a cast in place concrete pillar housing the elevator.

Welded seam

Bolted connection

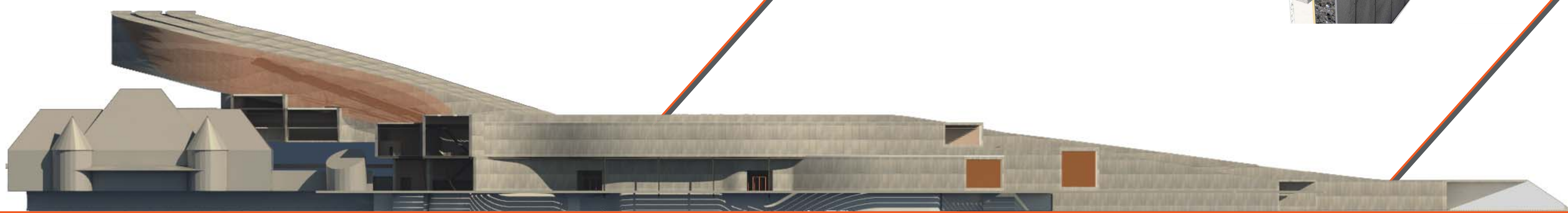
Northeast Section

Southwest Section

Tower Section

Northwest Section

Building Elevations



Northwest Elevation



Northeast Elevation



Southeast Elevation



Southwest Elevation