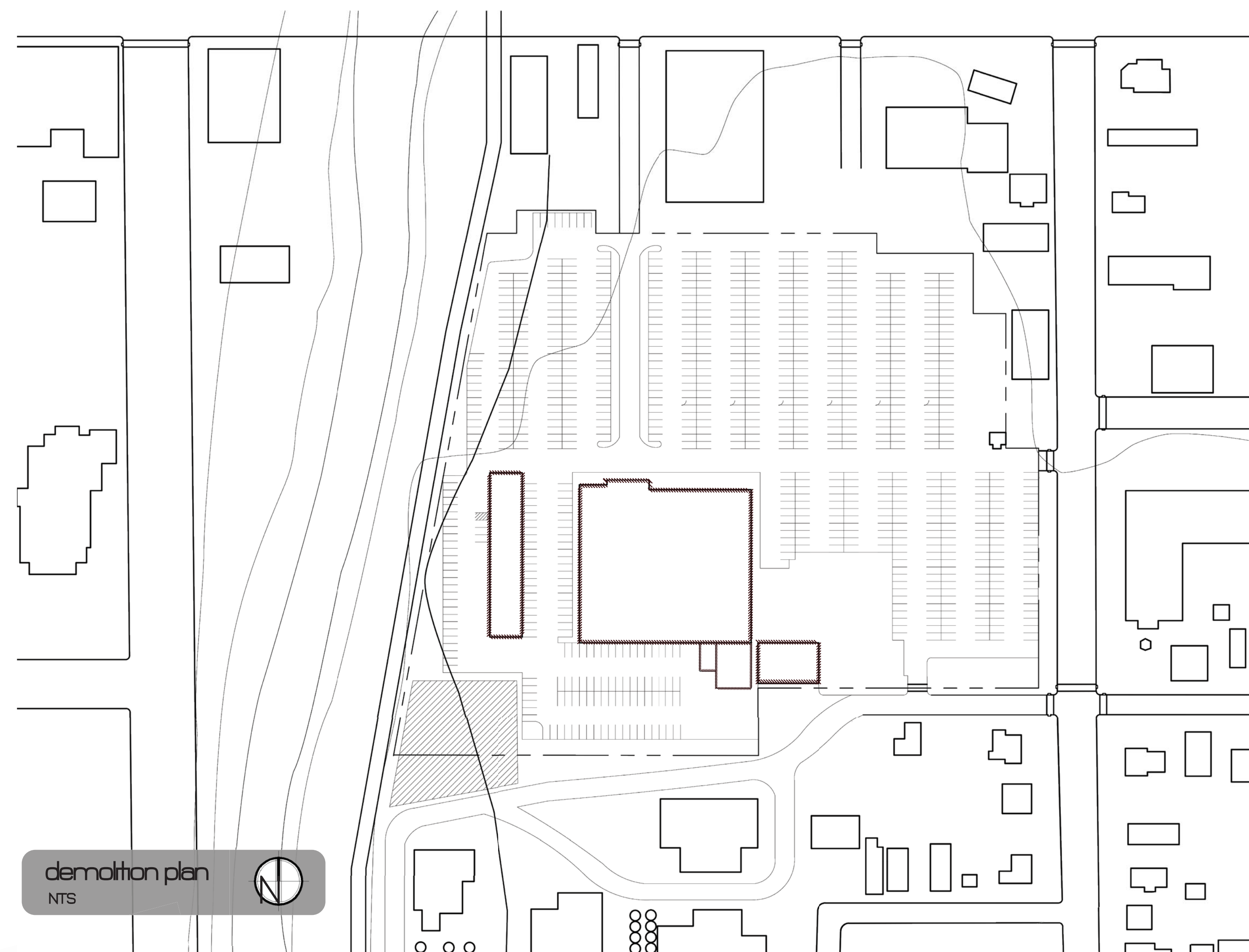
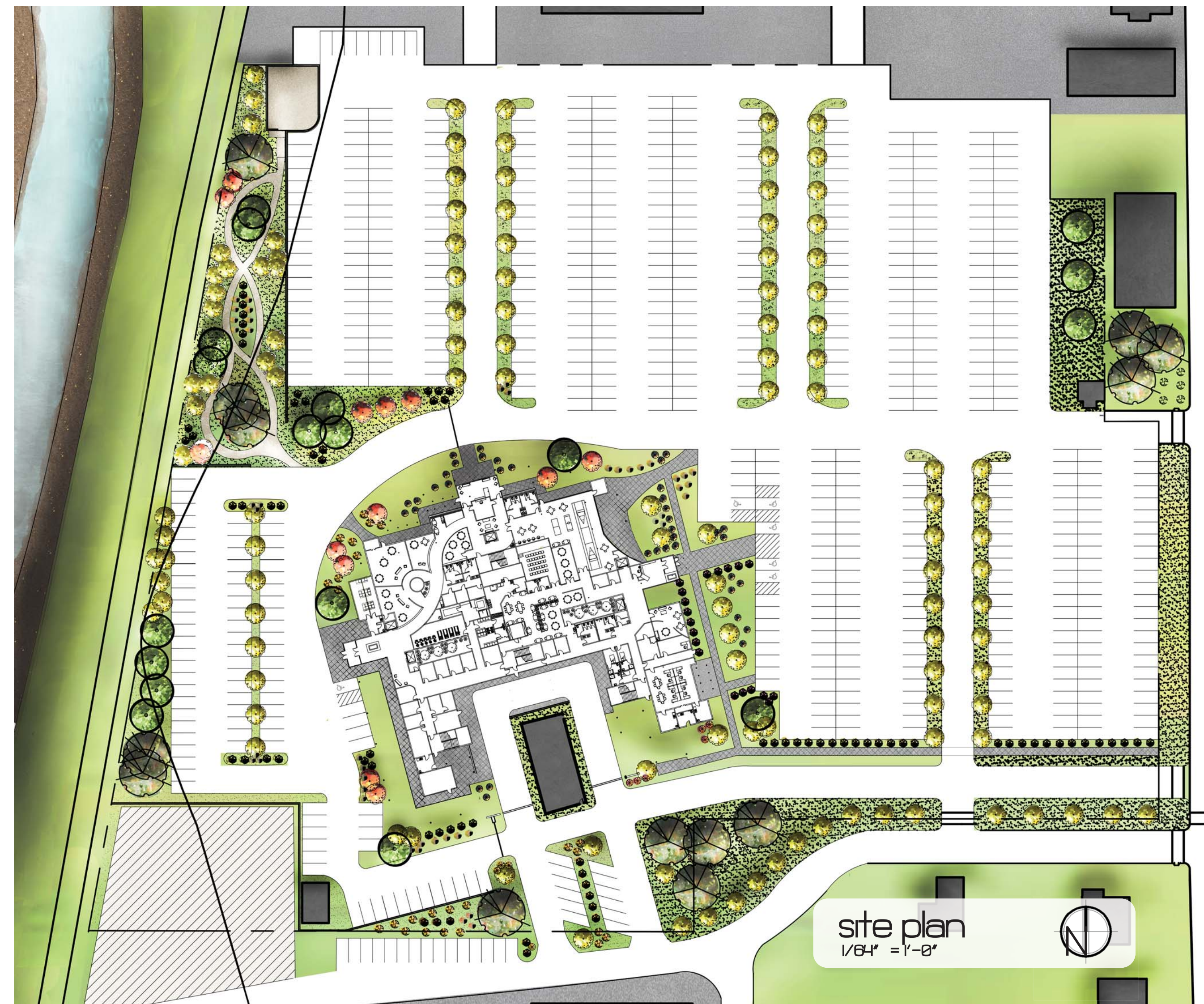
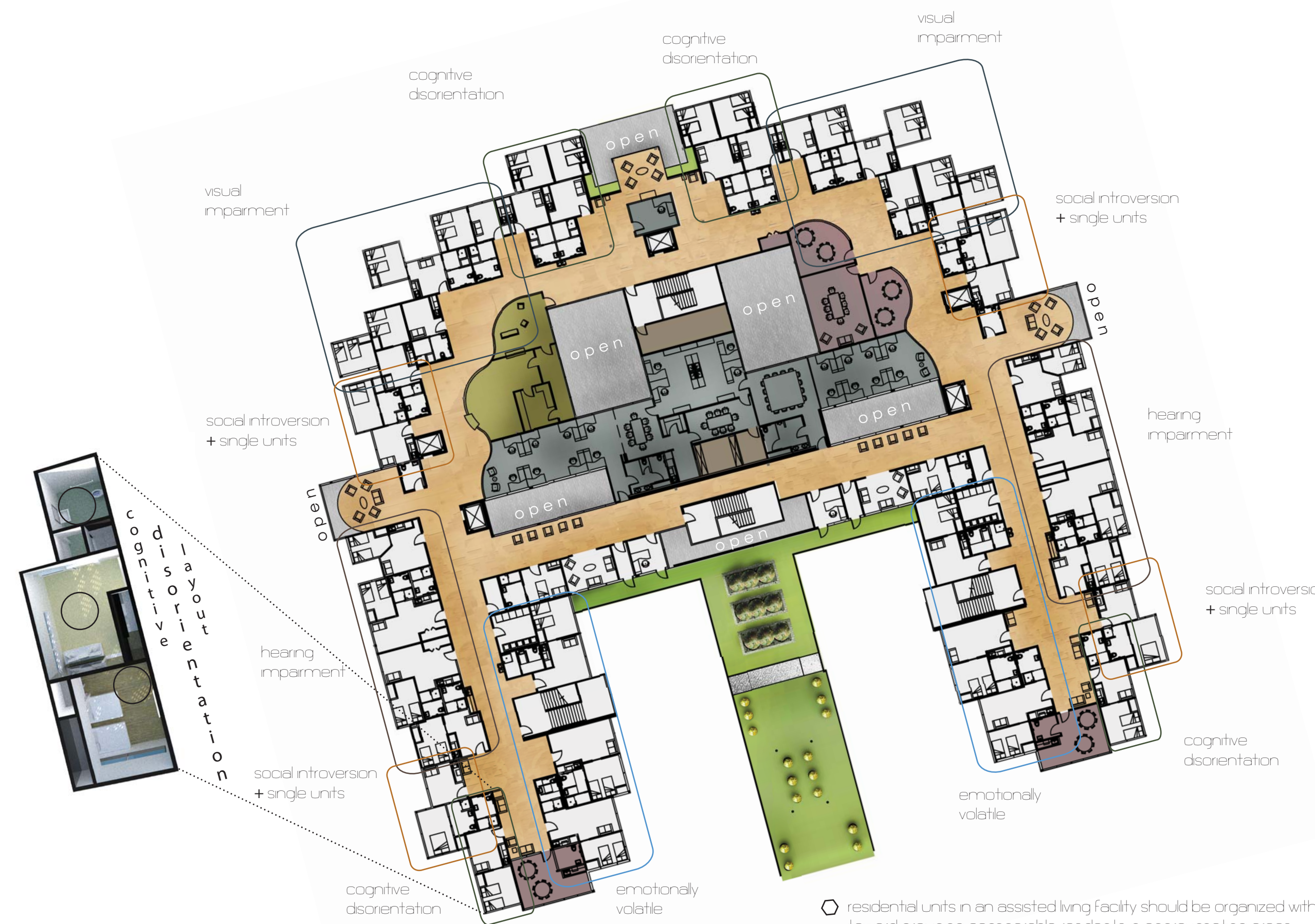


1. private entry + vestibule
2. private reception
3. seating
4. luggage cart storage
5. coffee bar
6. library
- 7-11. niche community room
9. men's locker room [staff]
10. women's locker room [staff]
12. bird atrium
13. women's toilet
14. men's toilet
- 15-17. public service space
18. sauna
19. spa + therapeutic pool
20. fitness center
21. men's locker room [fitness]
22. women's locker room [fitness]
23. elevator mechanical
- 24-27. therapy + treatment
28. clinic office
- 29-30. clinic
31. clinic waiting
32. clinic restroom
33. exterior storage
34. ambulance admission + pickup
- 35-36. clinic + x-ray
37. fitness + physical rehabilitation
38. women's toilet
39. men's toilet
40. dining + kitchen
41. geothermal mechanical
42. kitchen cooler
43. men's public toilet
44. women's public toilet
45. public education + multi-use
46. game + recreation + computer lab
47. women's public toilet
48. men's public toilet
49. worship + multi-use
50. admissions office
51. general office
52. public reception
53. public entry vestibule
54. staff breakroom
- 55-58. research
59. private women's toilet
60. exterior access toilet
61. private men's toilet
- 62-64. staff overnight
65. elevator mechanical
66. janitor
67. public men's toilet
68. public women's toilet
- 69-70. public education + consultation
71. mechanical
72. dining center



fitness + spa: 2398 sq ft
mixed residential: 256-6 sq ft
activity + multi use: 12263 sq ft
research: 8923 sq ft
mechanical: 5823 sq ft
pharmacy + clinic: 2688 sq ft
other: 2736-4 sq ft
square footage breakdown



- activity + multi use
- research
- mechanical
- pharmacy



○ residential units in an assisted living facility should be organized with consideration toward grouping comparable residents in approximating areas

○ because many behaviors associated with mental disorders are also prevalent among Alzheimer's disease patients care facilities for these patients should have similar spatial layouts and design implementations as mental health facilities