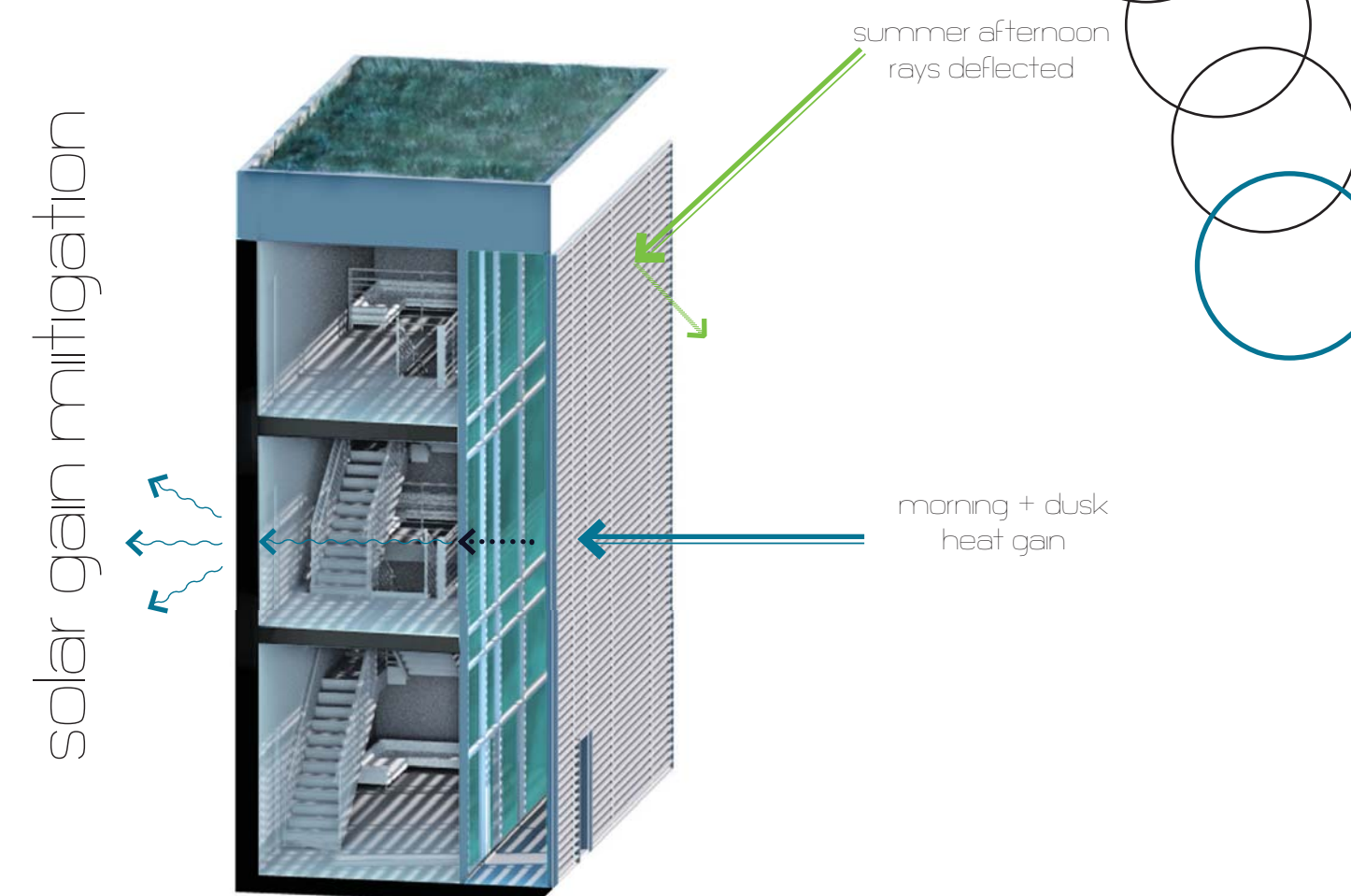


education

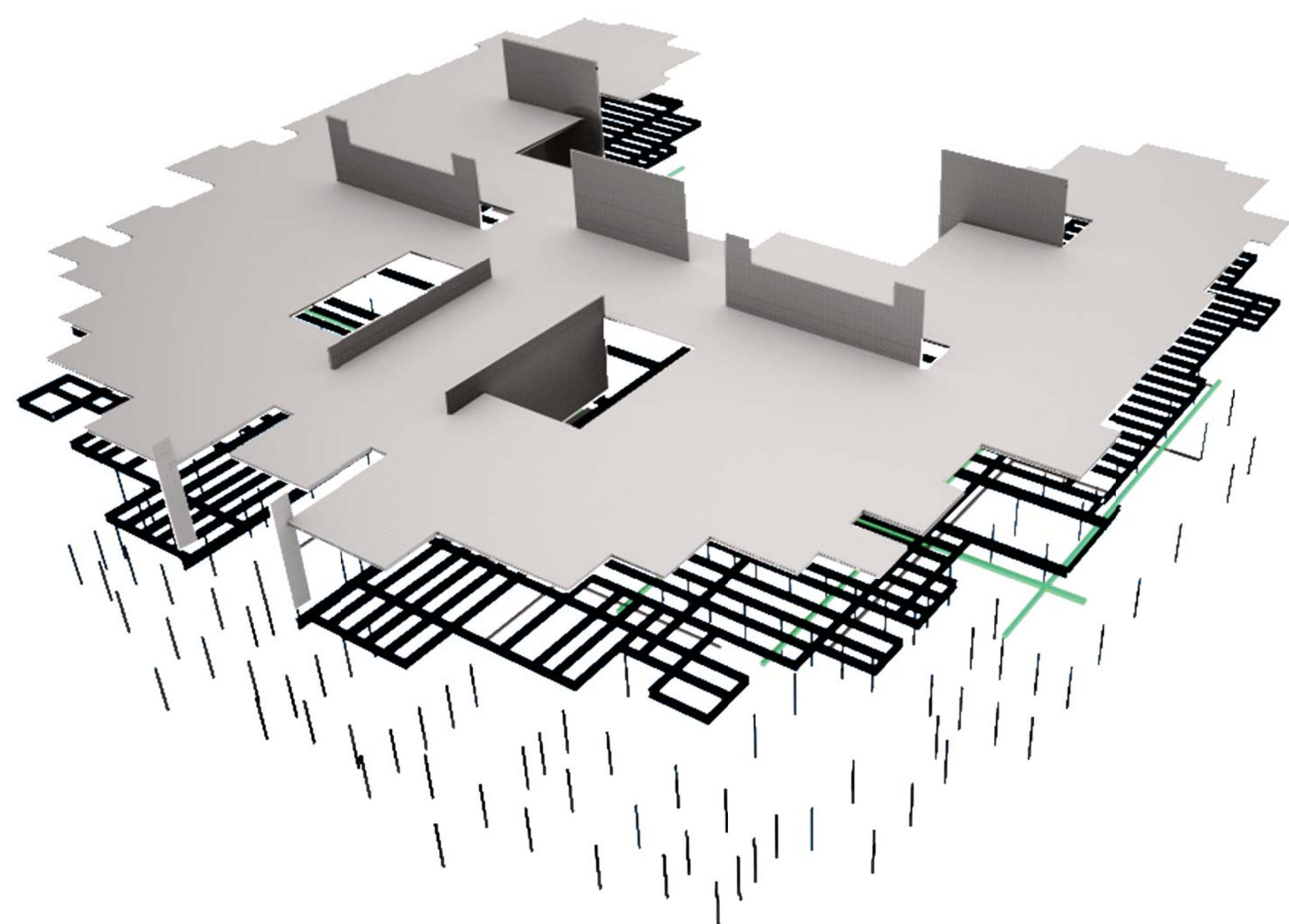


structure



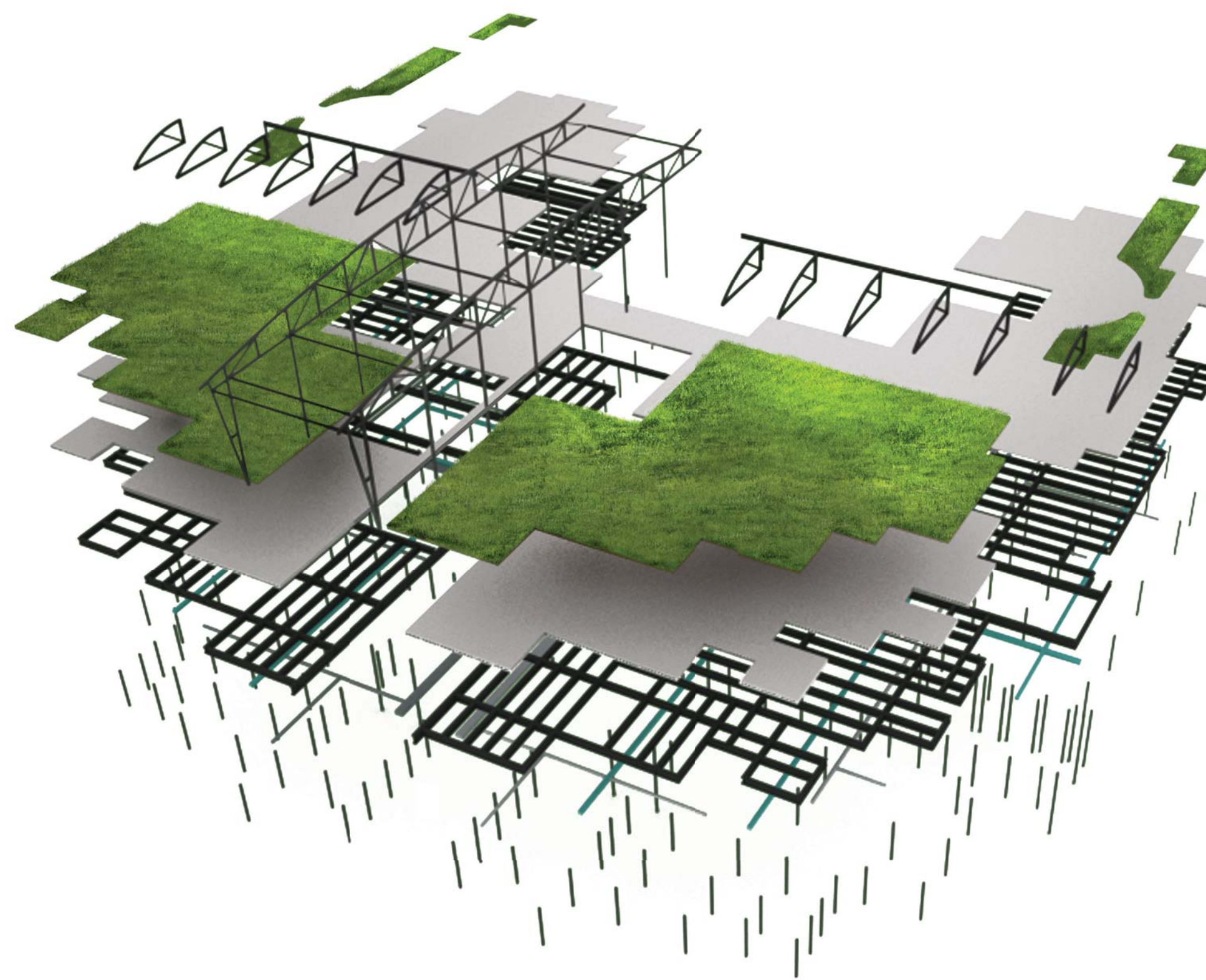
socialization

Using visual cues and pathways which encourage residents with dementia to pass by certain areas through design elevates disorientation and promotes mobility and social interaction



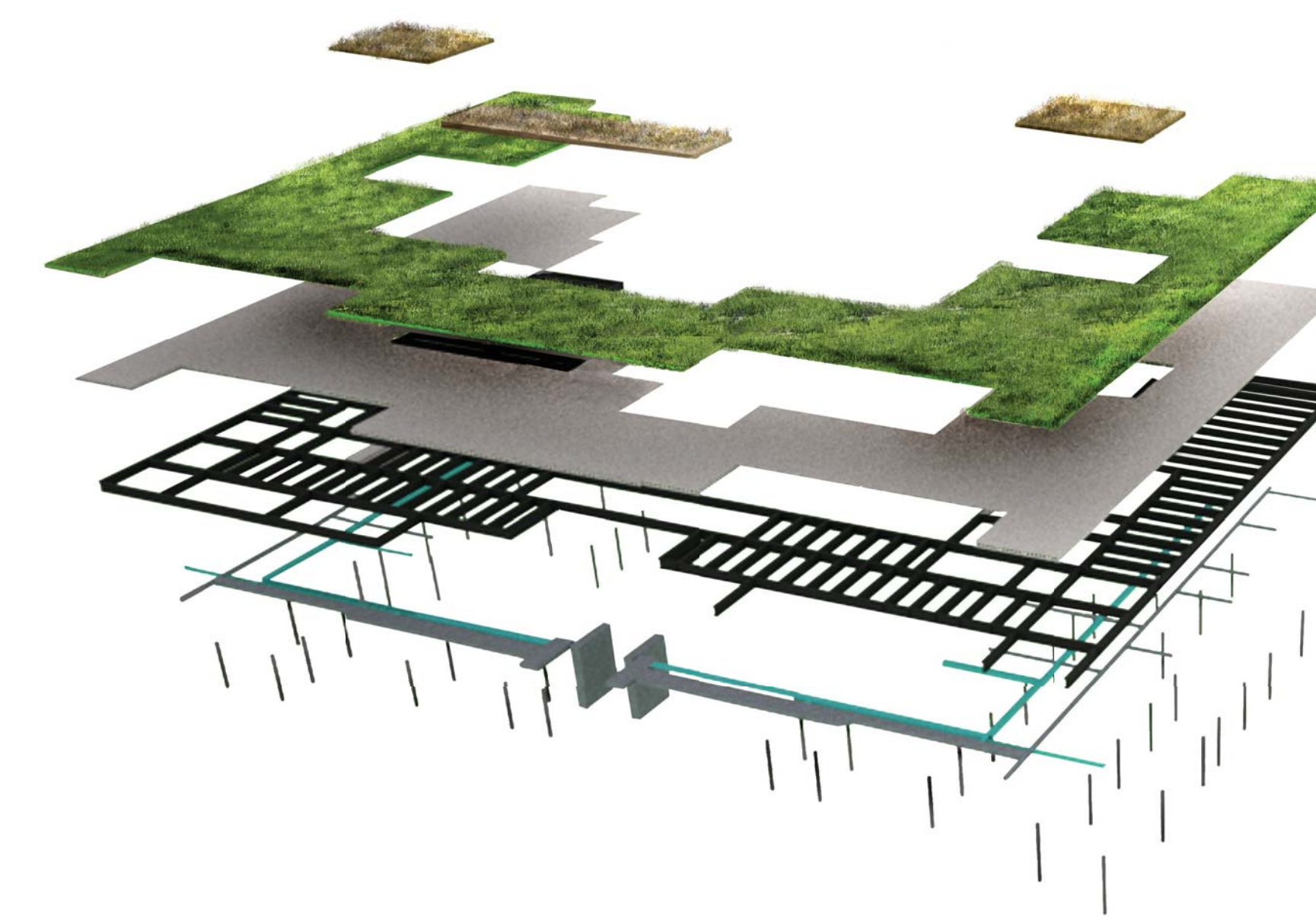
- load bearing 8" CMU walls
- 1 1/2" concrete topping over 8" hollowcore slab over 1 1/2" concrete topping
- steel beams + girders
- HVAC system ducts
- steel columns

man level  
exploded structure



- intensive green roof at stairwells - northern tufted hairgrass vegetation
- intensive green roof - sedum vegetation
- 1 1/2" concrete topping with radiant floor heat tubing over 8" hollowcore slab over 1 1/2" concrete topping
- steel beams + girders
- HVAC system
- steel columns

second level  
exploded structure



- intensive green roof at stairwells - northern tufted hairgrass vegetation
- intensive green roof - sedum vegetation
- 1 1/2" concrete topping over 8" hollowcore slab over 1 1/2" concrete topping
- steel beams + girders
- HVAC system
- steel columns

third level  
exploded structure

Department of Architecture and Landscape Architecture, NDSU  
 ARCH 772: Design Thesis: Spring 2013  
 Alzheimer's Remedation Center  
 Architecture for Research Innovation and Treatment  
 Alzheimer's Research + Assisted Living: xxx sq ft  
 Amanda Mauch  
 Steve Martens  
 Adobe Suite Programs: AutoCAD, Autodesk Revit, Sketchup, Maxwell Render

raise awareness...advance research.  
 innovative expressions