



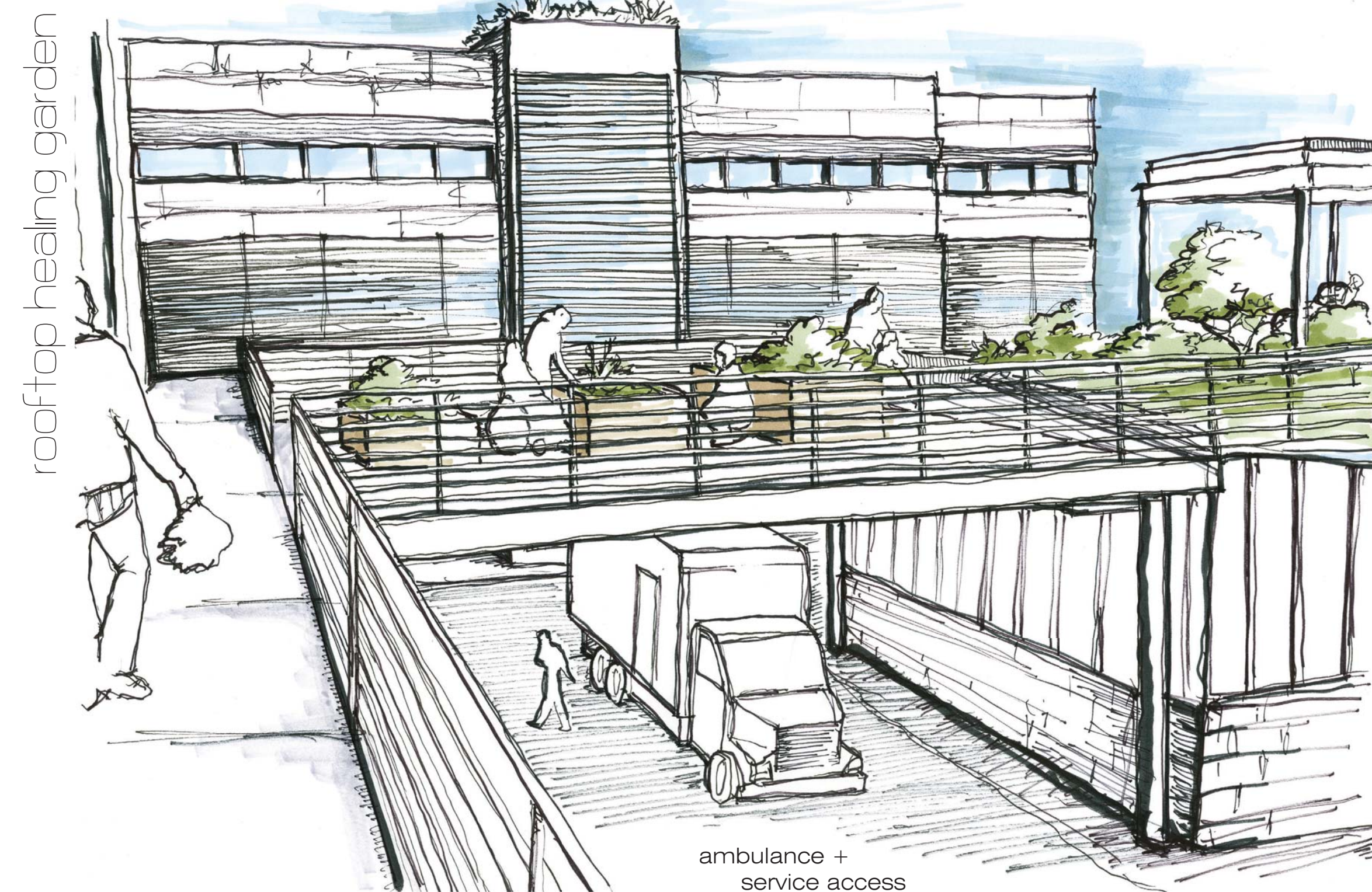
rehabilitation



- internal roof drain
- substrate + vegetation
- drainage + reservoir
- filter layer
- protection layer
- metal roof deck (root barrier)
- waterproofing membrane
- tapered rigid insulation
- vapor barrier
- 1/2" treated plywood sheathing
- 1 1/2" concrete topping over
- 8" concrete hollowcore slab over 1 1/2" concrete topping

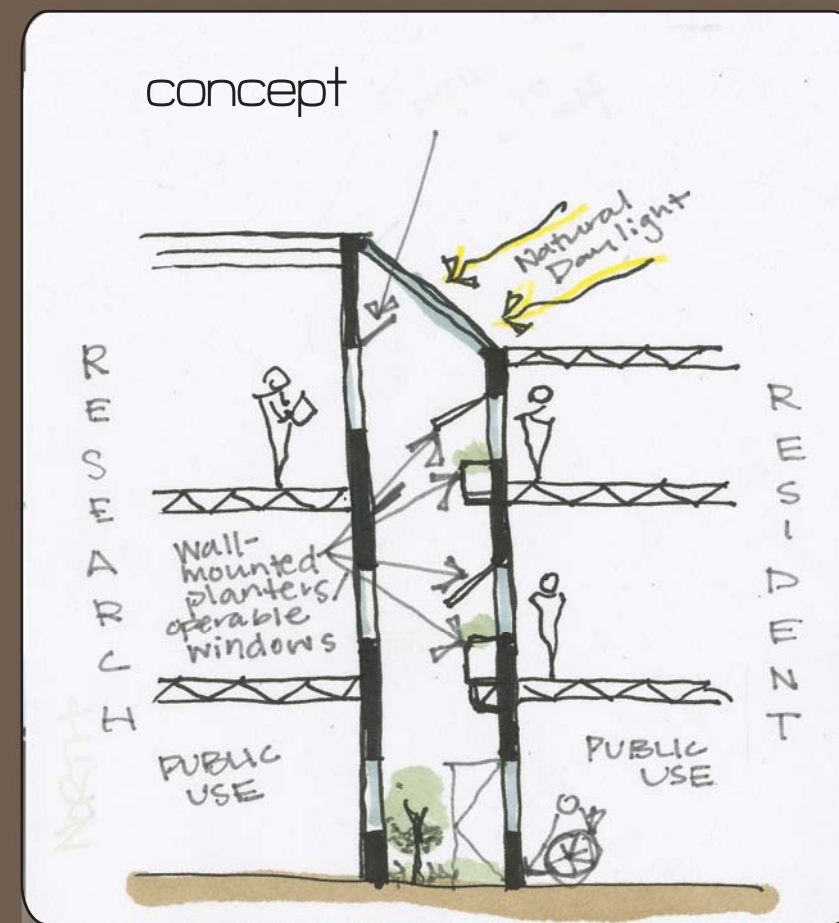
green roof

manage, insulate, sustain.



rooftop healing garden

ambulance + service access



biophilia

justification

Through a design that acknowledges the physical, emotional, and mental needs of Alzheimer's patients and responds to factual knowledge of the disease, the built environment could trigger changes in memory. This would provide researchers with a basis to study Alzheimer's disease and provide and advance treatment. As one of less than 40 Alzheimer's disease research centers across the country, the construction of this facility would serve as an innovative medical research icon. It would aim to raise awareness about the disease and encourage the construction of similar facilities of this type; thus allowing scientists to move forward in the fight against Alzheimer's disease.