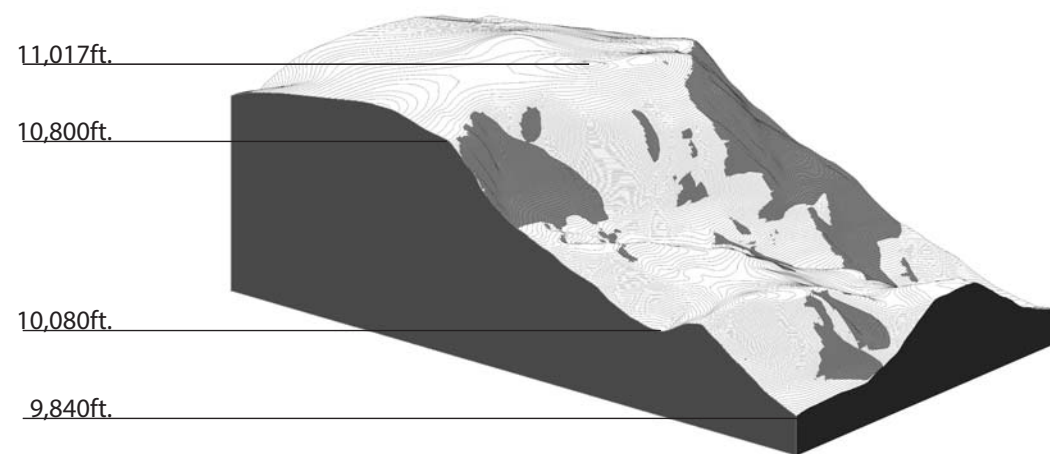
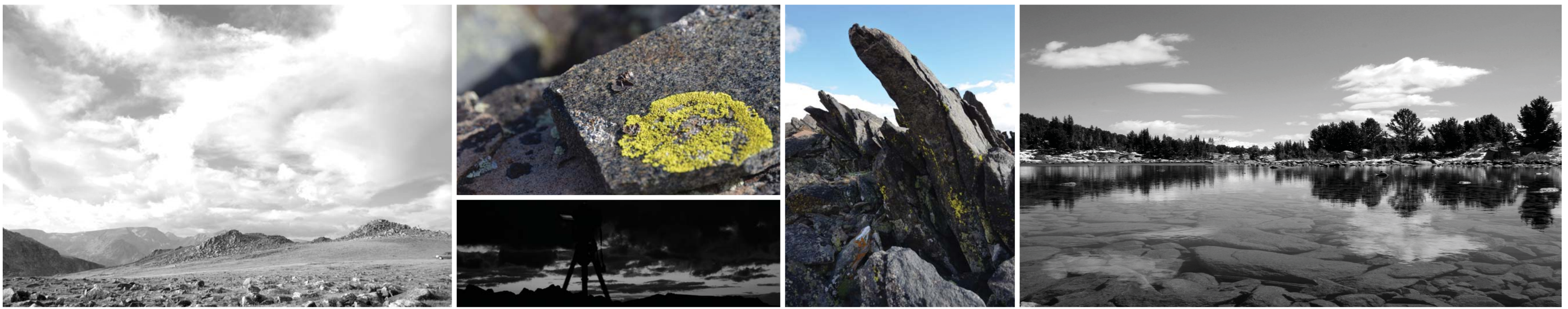


Absaroka Observatory and Visitor Center

Site Context Information

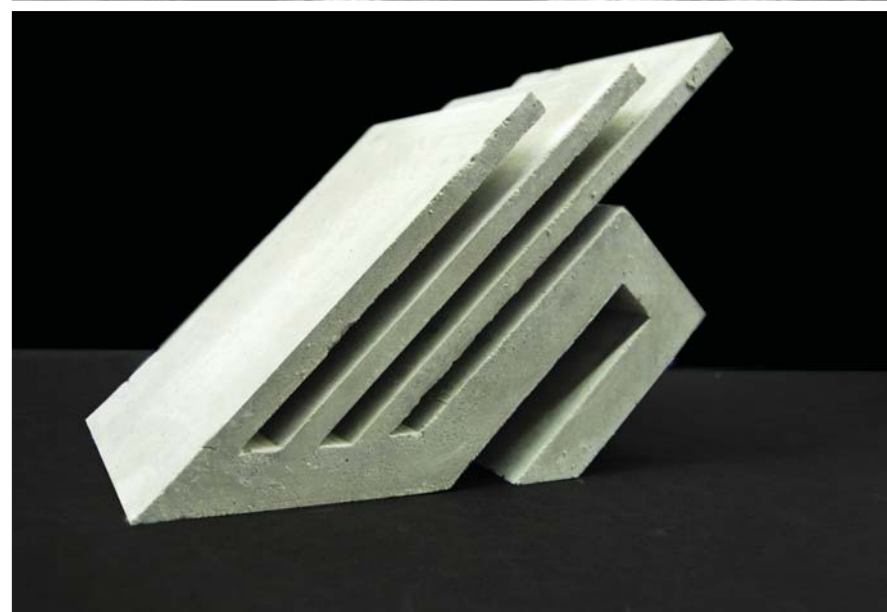


North-South Section

Site High Altitude Observatory

The observatory is based at 11,017 ft above sea level. Higher altitudes help reduce visual blurring for the telescopes. At this altitude only small alpine grasses grow. Their growing season is typically 2 months out of each year. Wildlife such as goats, bears, and marmots travel across the site.

11,017 ft



Site Inspiration Glacial geology of site

Inspiration for "Through a Technical Lens" was found in the rock formations along the Beartooth Pass. The sharp angles, smooth meadows and textures all played a role in the design of the Absaroka Observatory and Visitor Center.

