



By: Rachel Gemlo

Amplifying Aquatic Thresholds:

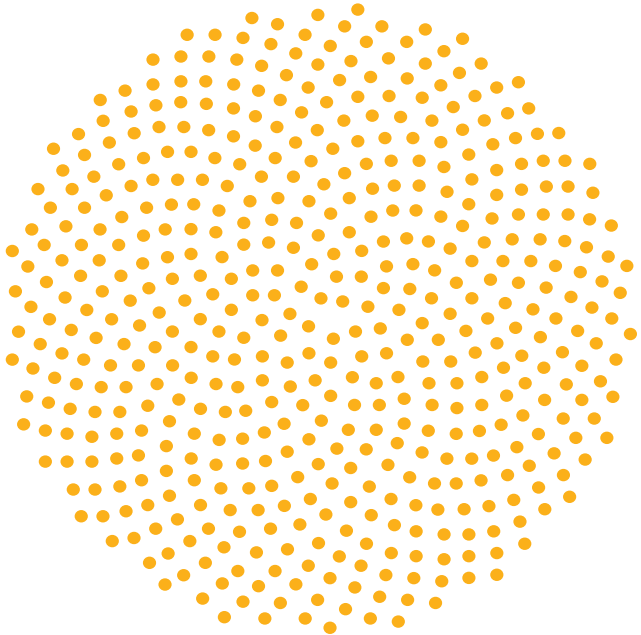
A Great Lakes conservation & research center on Washington Island, WI

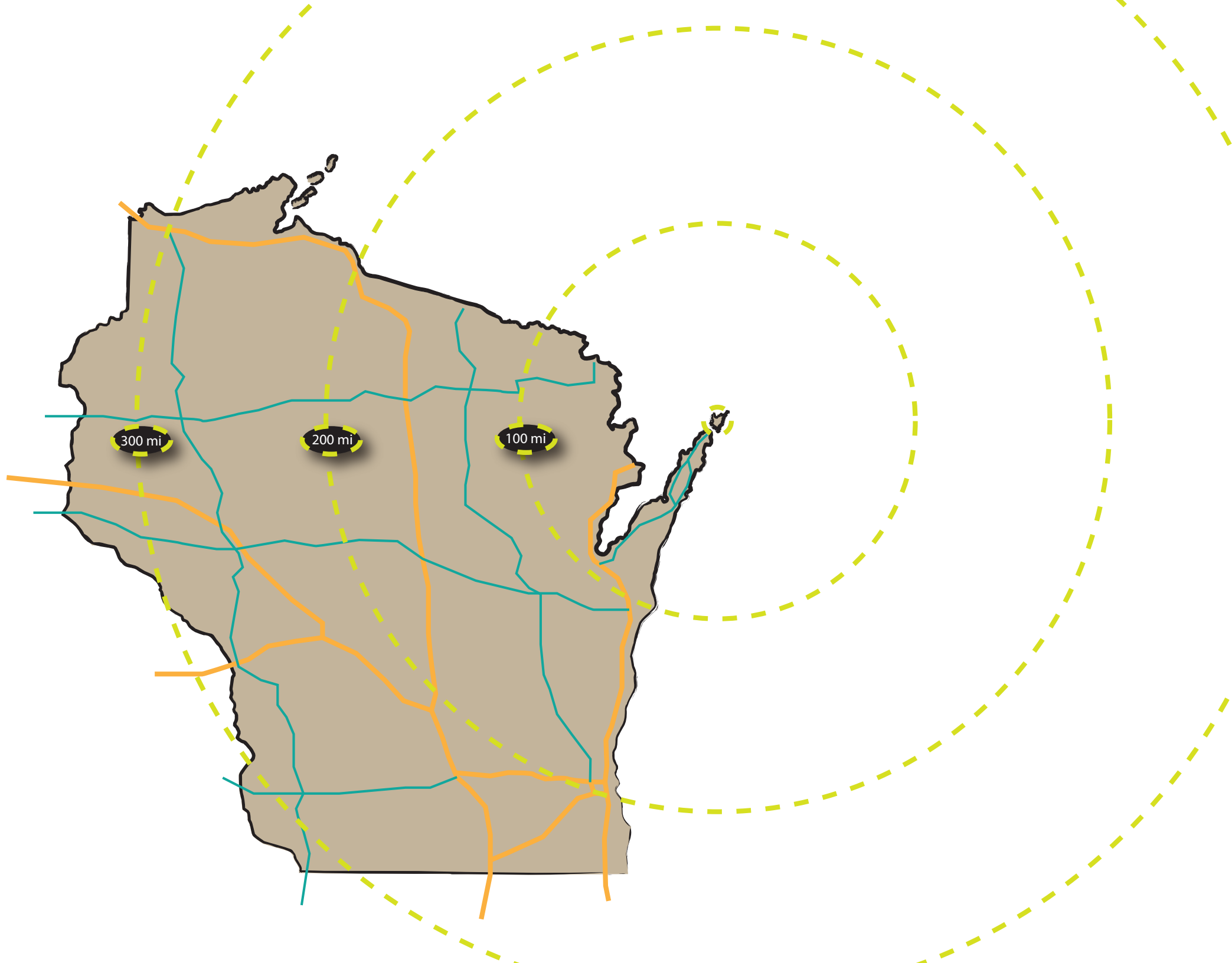
Problem Statement:

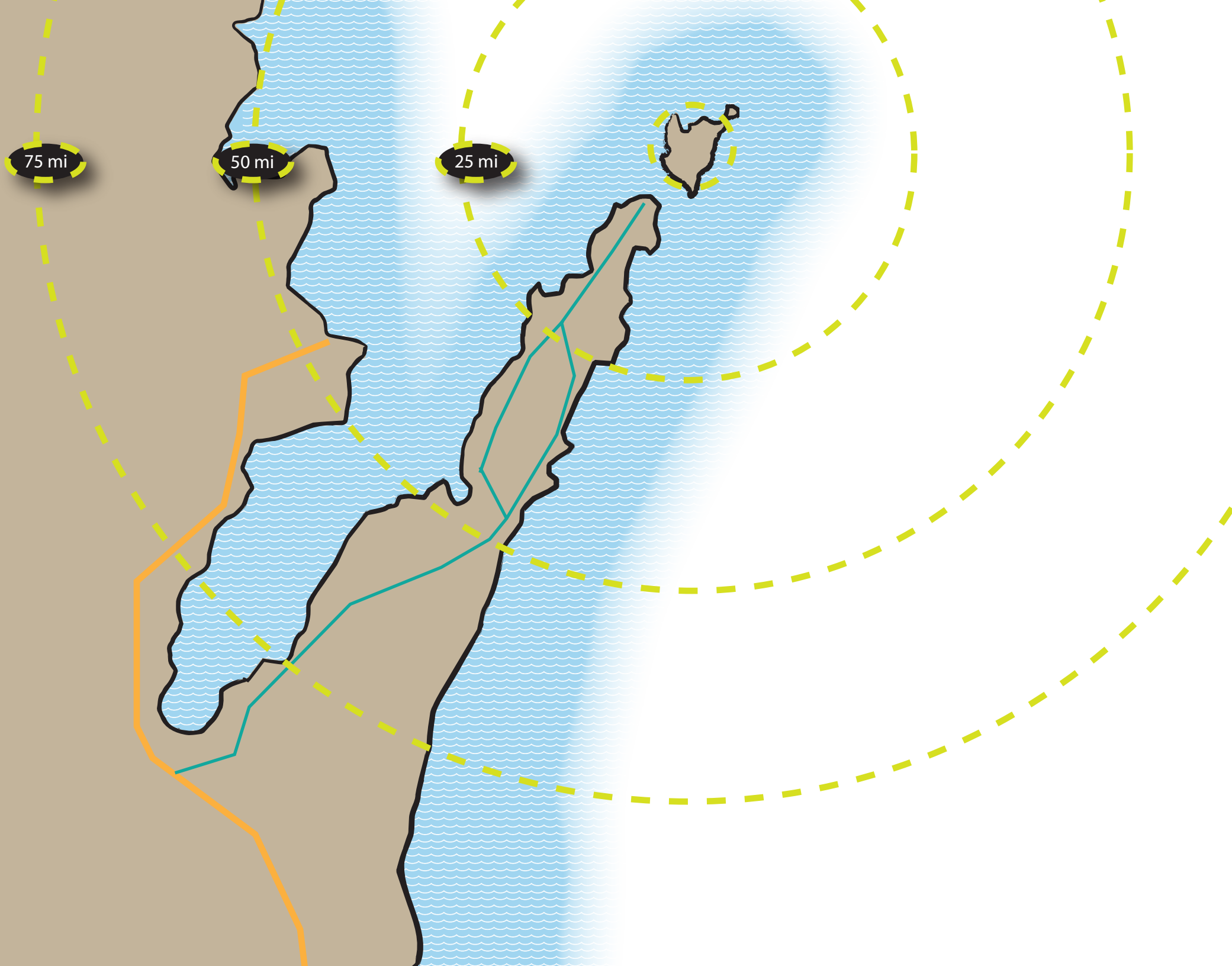
how do natural formations
influence the way we interact
with a site as a whole?

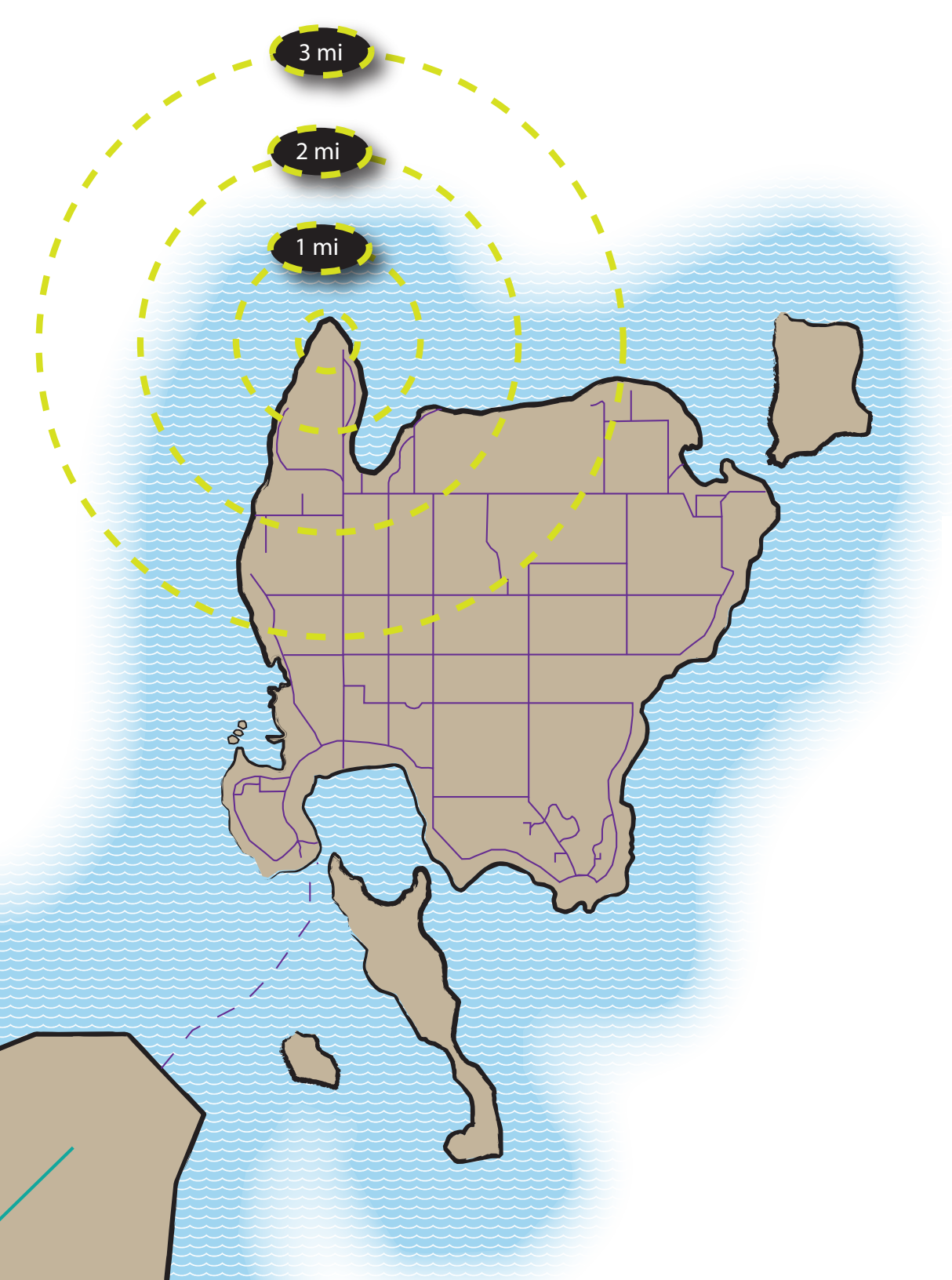
...we *waste* water at a much faster
rate than the world can *naturally*
replish it...

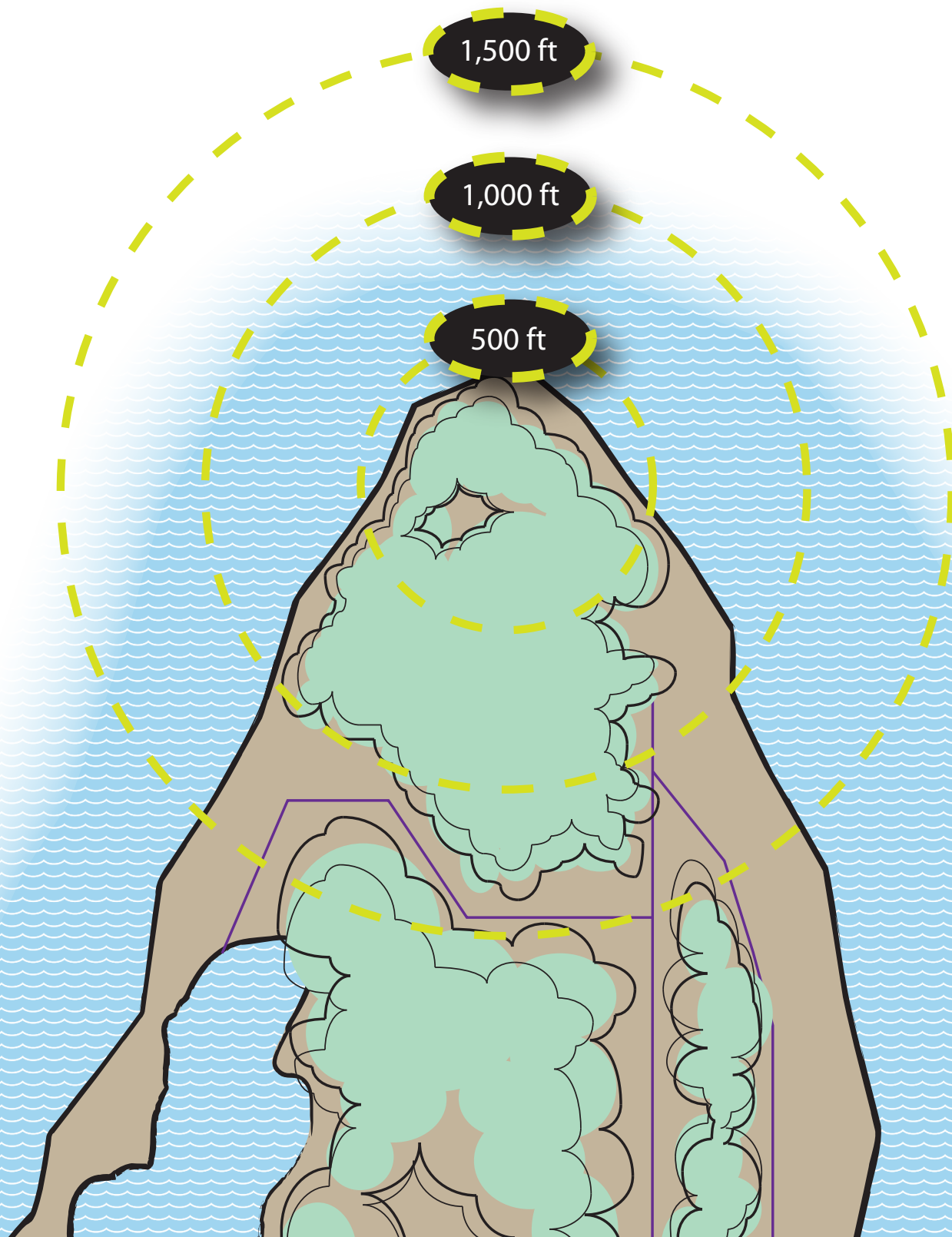
...we **build** out of *gratitude,*
memory, and *transcendent*
hope...













○ north

..... south ○





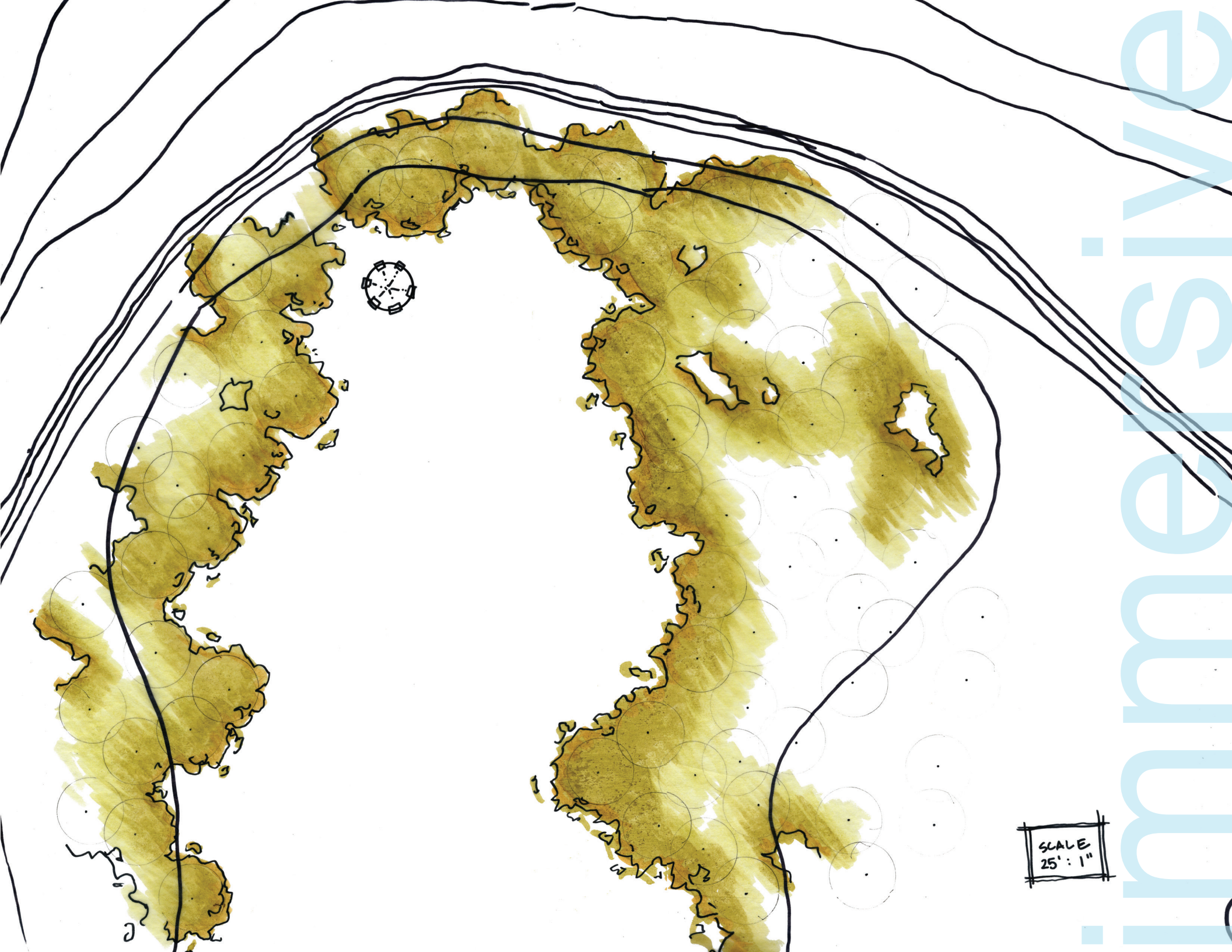
east

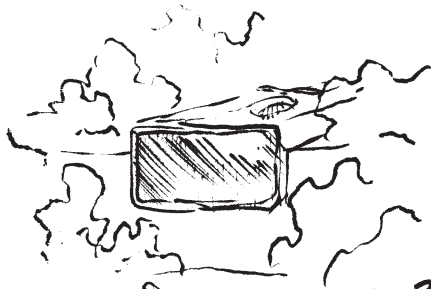
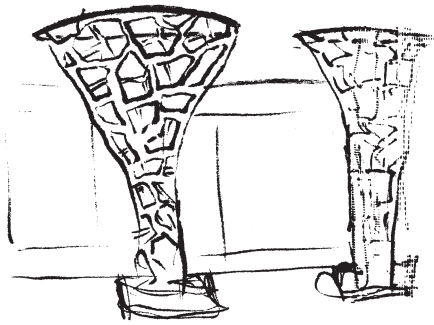
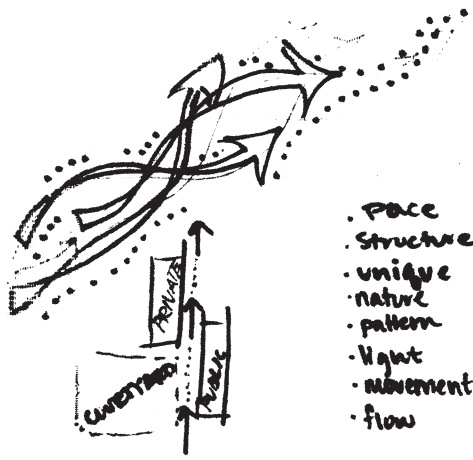
west



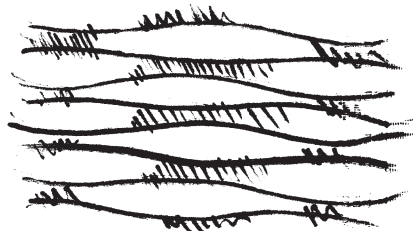


texture

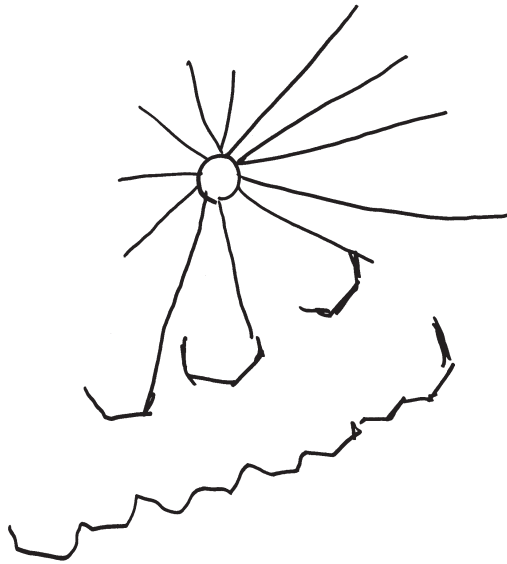
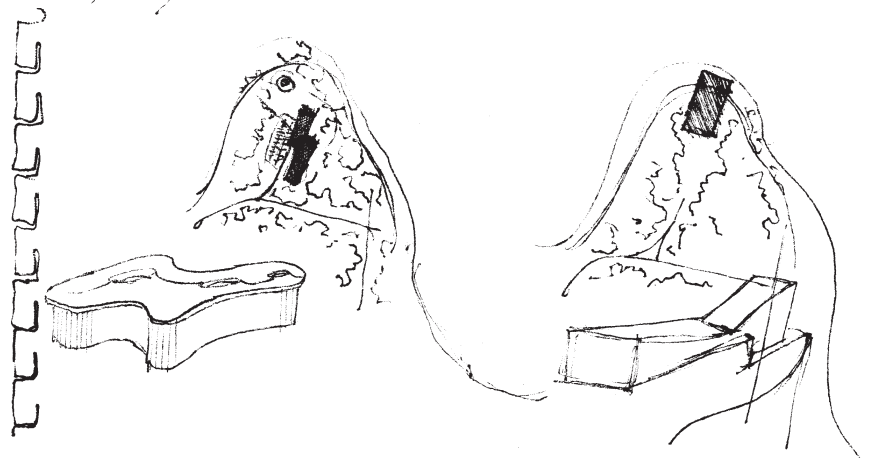
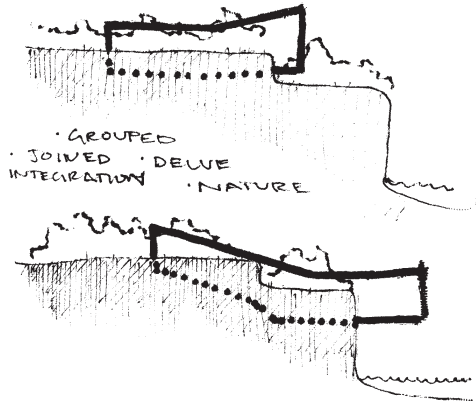
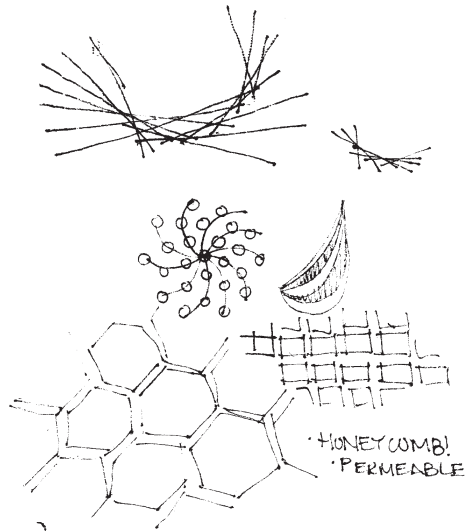
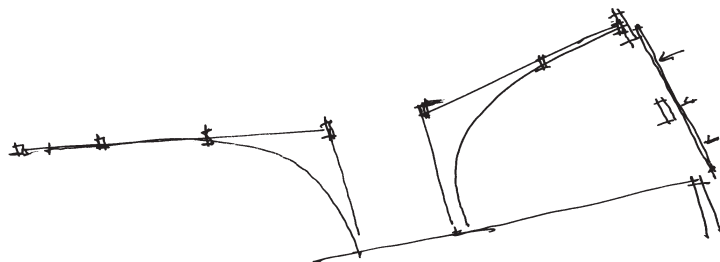
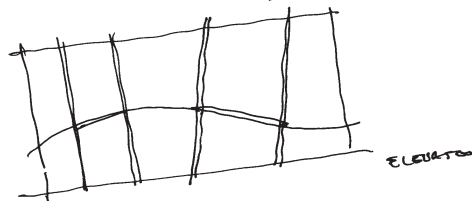




hierarchy?
 Built into the
 cliff face?
 Just cut over
 cliff??



structural patterns/grid

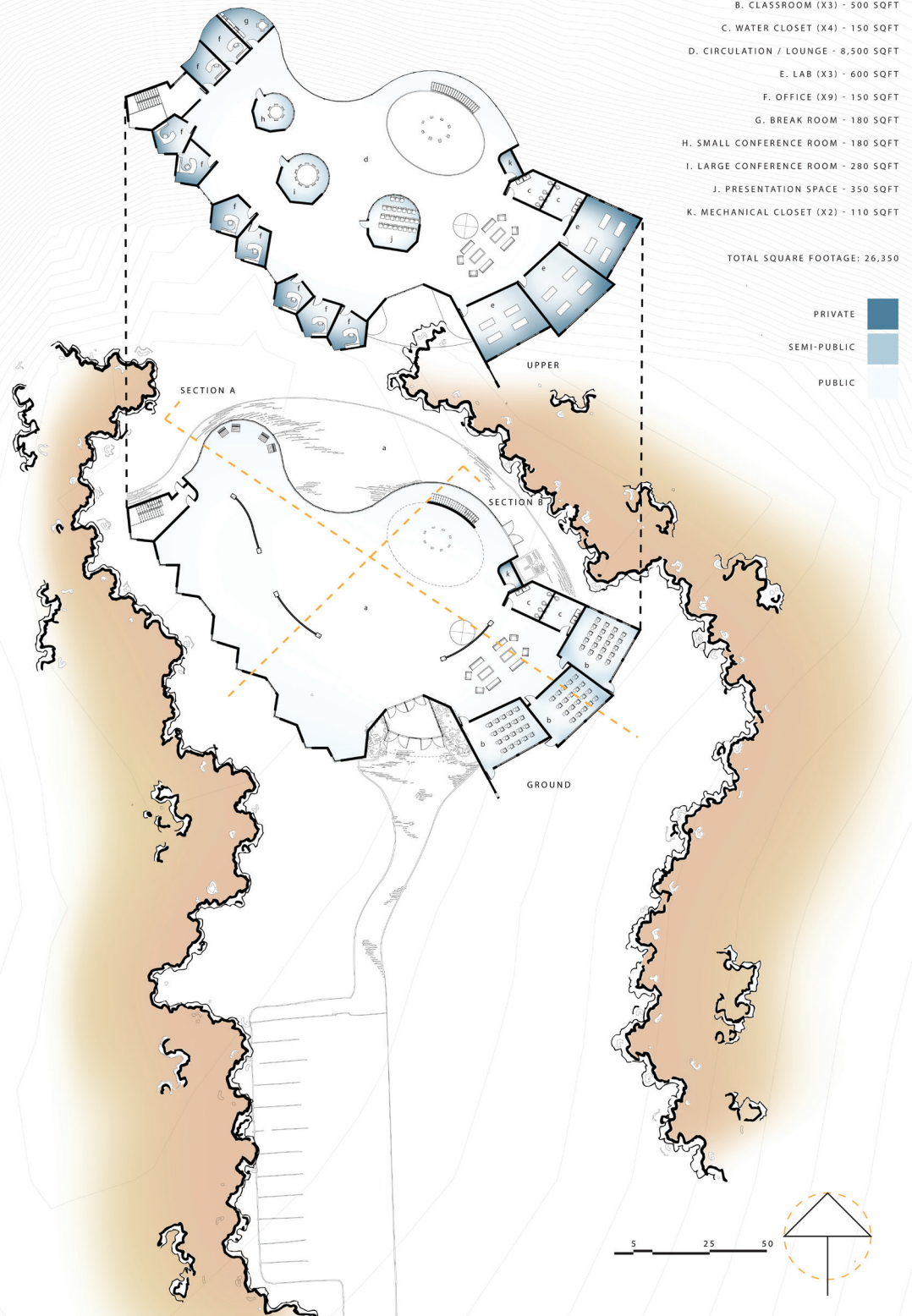


Symphony

clearing in the trees ■

rock outcropping ■

water's edge ■



- A. LOBBY / RECEPTION / GALLERY - 11,500 SQFT
- B. CLASSROOM (X3) - 500 SQFT
- C. WATER CLOSET (X4) - 150 SQFT
- D. CIRCULATION / LOUNGE - 8,500 SQFT
- E. LAB (X3) - 600 SQFT
- F. OFFICE (X9) - 150 SQFT
- G. BREAK ROOM - 180 SQFT
- H. SMALL CONFERENCE ROOM - 180 SQFT
- I. LARGE CONFERENCE ROOM - 280 SQFT
- J. PRESENTATION SPACE - 350 SQFT
- K. MECHANICAL CLOSET (X2) - 110 SQFT

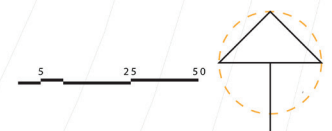
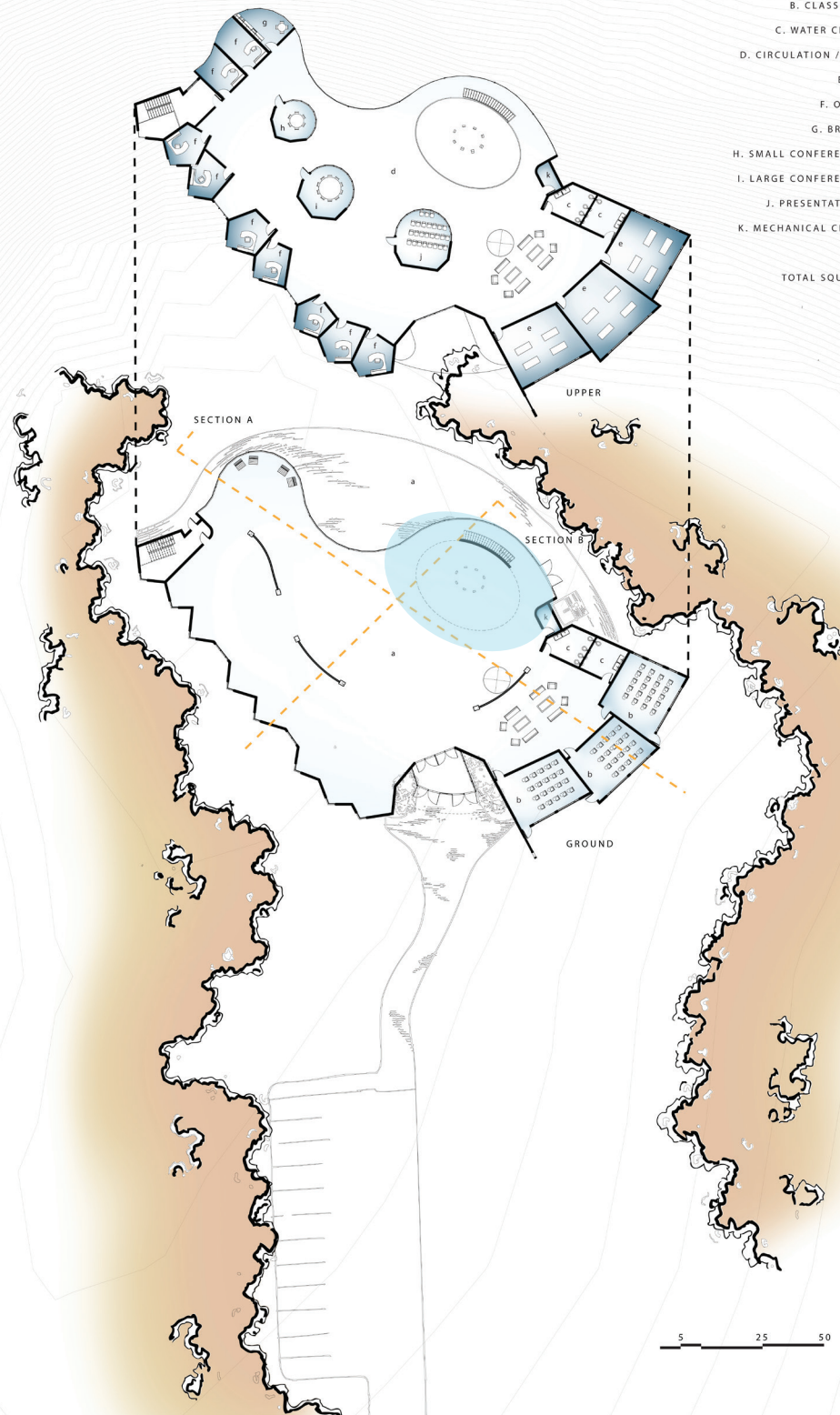
TOTAL SQUARE FOOTAGE: 26,350

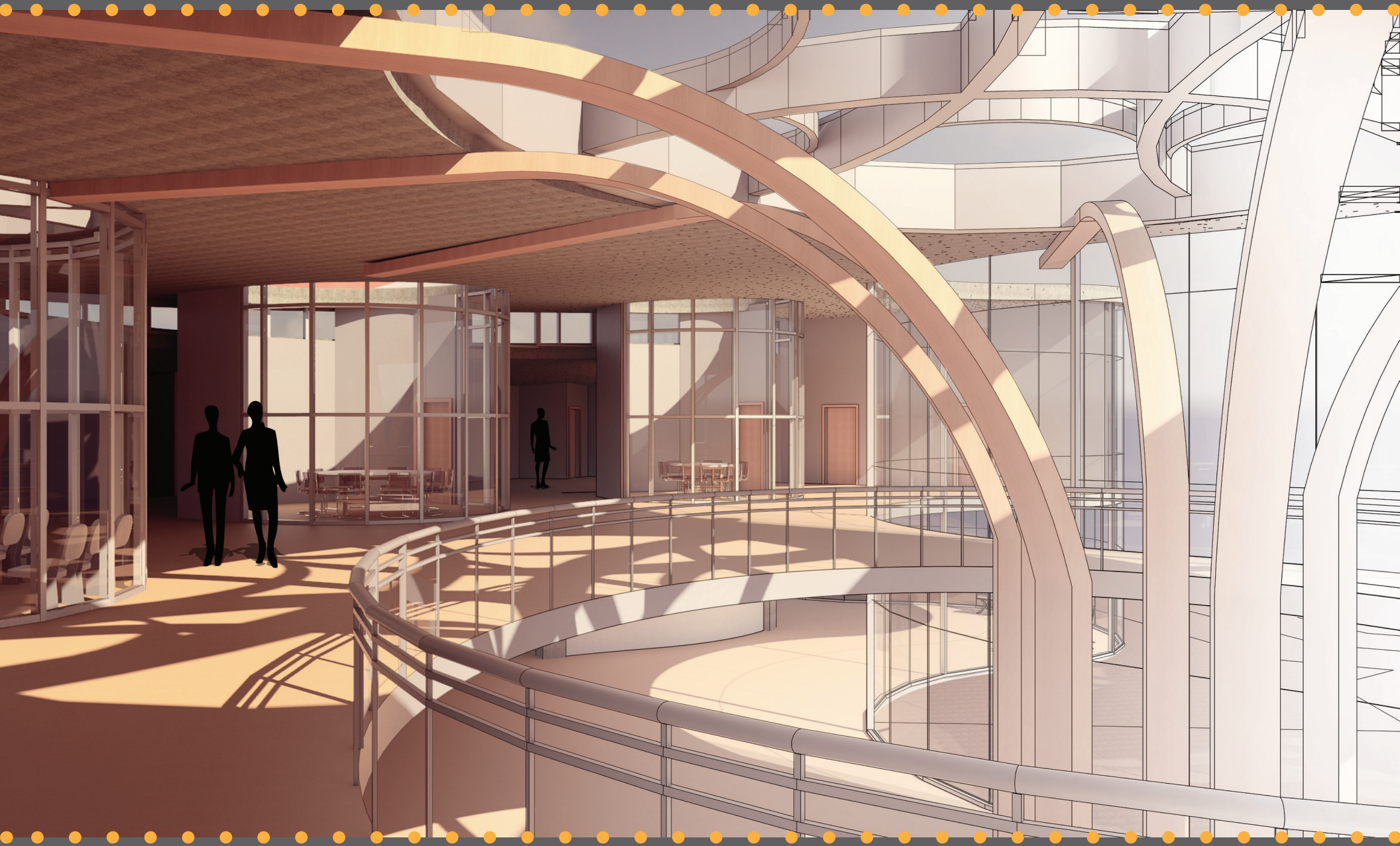
- PRIVATE
- SEMI-PUBLIC
- PUBLIC

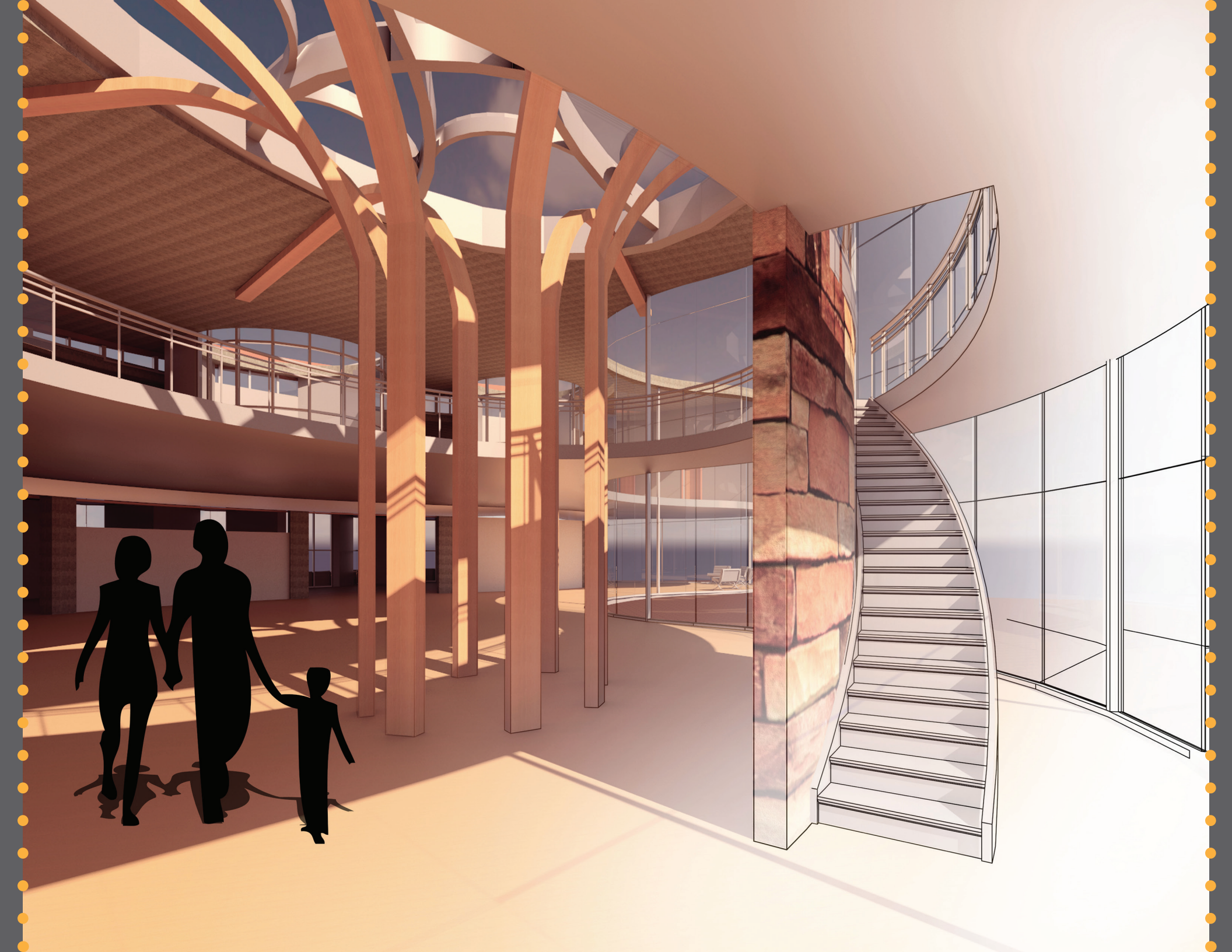
clearing in the trees

rock outcropping

water's edge





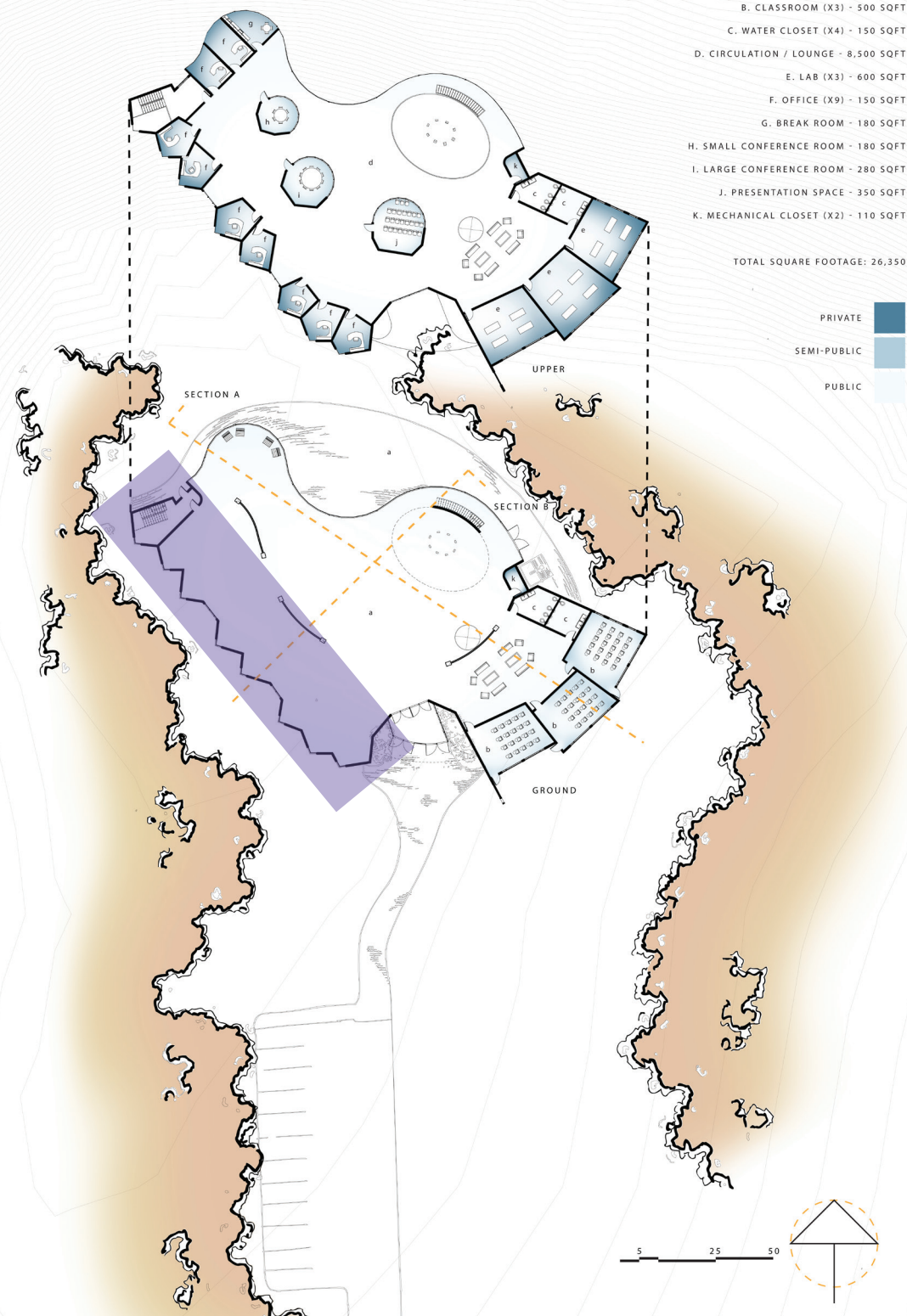


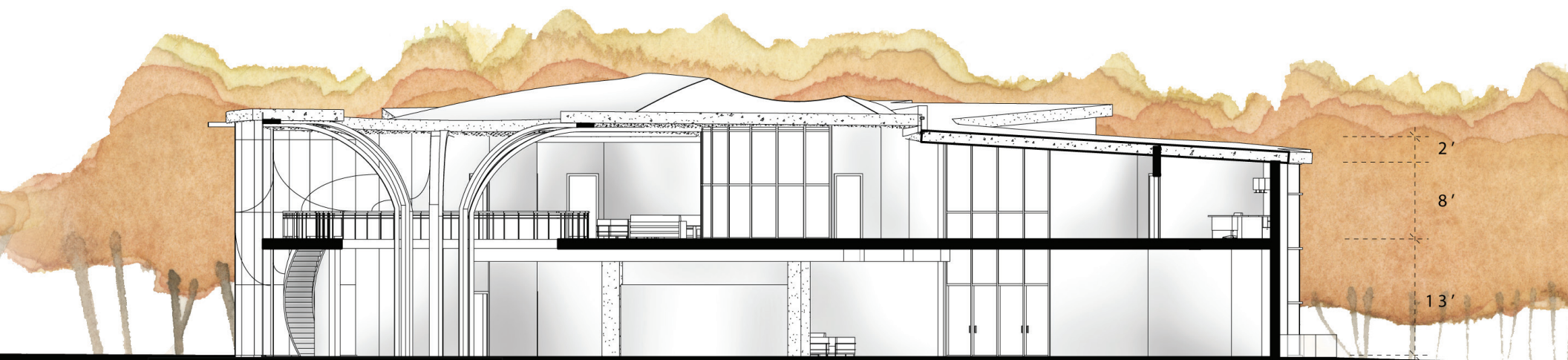
- A. LOBBY / RECEPTION / GALLERY - 11,500 SQFT
- B. CLASSROOM (X3) - 500 SQFT
- C. WATER CLOSET (X4) - 150 SQFT
- D. CIRCULATION / LOUNGE - 8,500 SQFT
- E. LAB (X3) - 600 SQFT
- F. OFFICE (X9) - 150 SQFT
- G. BREAK ROOM - 180 SQFT
- H. SMALL CONFERENCE ROOM - 180 SQFT
- I. LARGE CONFERENCE ROOM - 280 SQFT
- J. PRESENTATION SPACE - 350 SQFT
- K. MECHANICAL CLOSET (X2) - 110 SQFT

TOTAL SQUARE FOOTAGE: 26,350

- PRIVATE
- SEMI-PUBLIC
- PUBLIC

- clearing in the trees
- rock outcropping
- water's edge





SECTION B

- A. LOBBY / RECEPTION / GALLERY - 11,500 SQFT
- B. CLASSROOM (X3) - 500 SQFT
- C. WATER CLOSET (X4) - 150 SQFT
- D. CIRCULATION / LOUNGE - 8,500 SQFT
- E. LAB (X3) - 600 SQFT
- F. OFFICE (X9) - 150 SQFT
- G. BREAK ROOM - 180 SQFT
- H. SMALL CONFERENCE ROOM - 180 SQFT
- I. LARGE CONFERENCE ROOM - 280 SQFT
- J. PRESENTATION SPACE - 350 SQFT
- K. MECHANICAL CLOSET (X2) - 110 SQFT

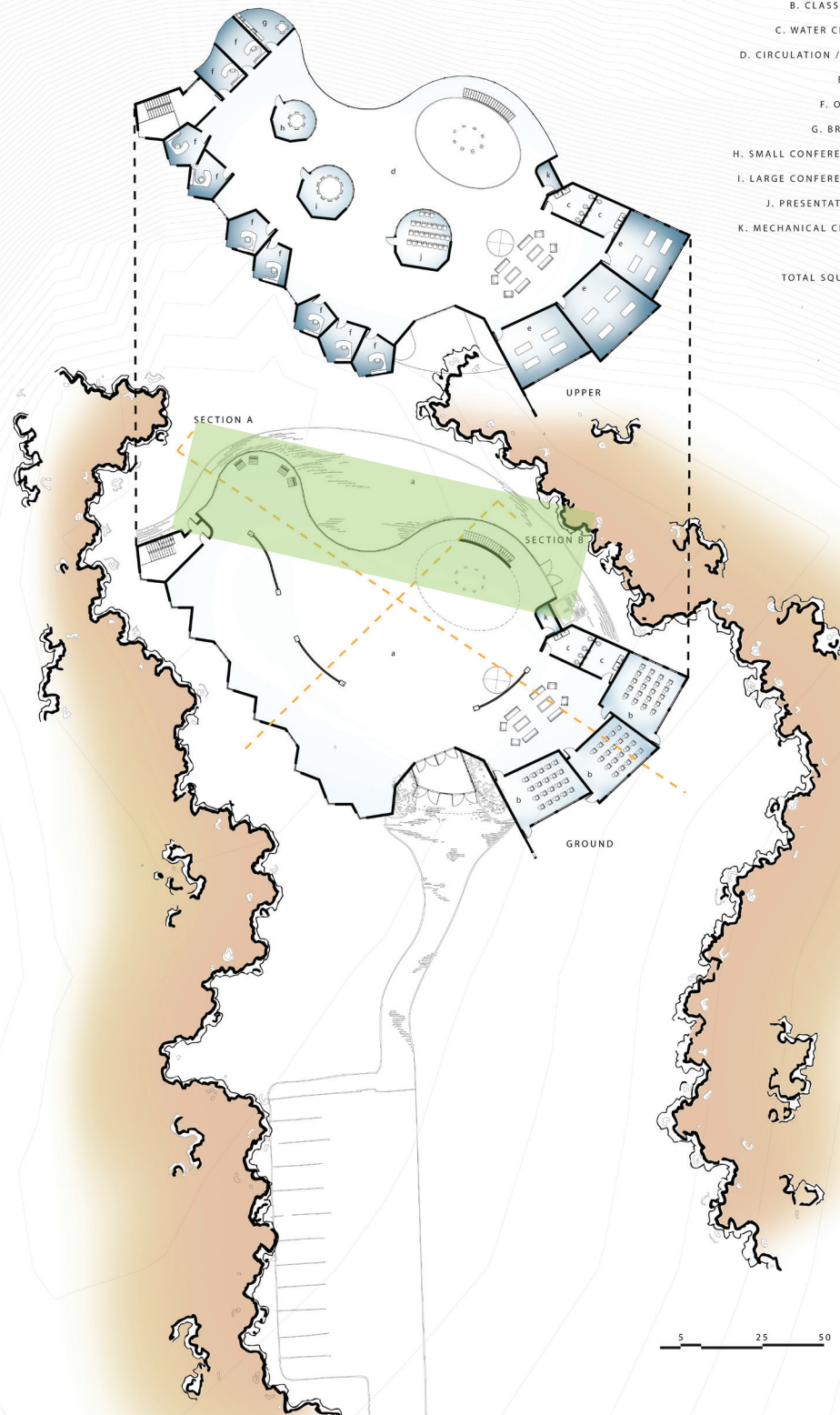
TOTAL SQUARE FOOTAGE: 26,350

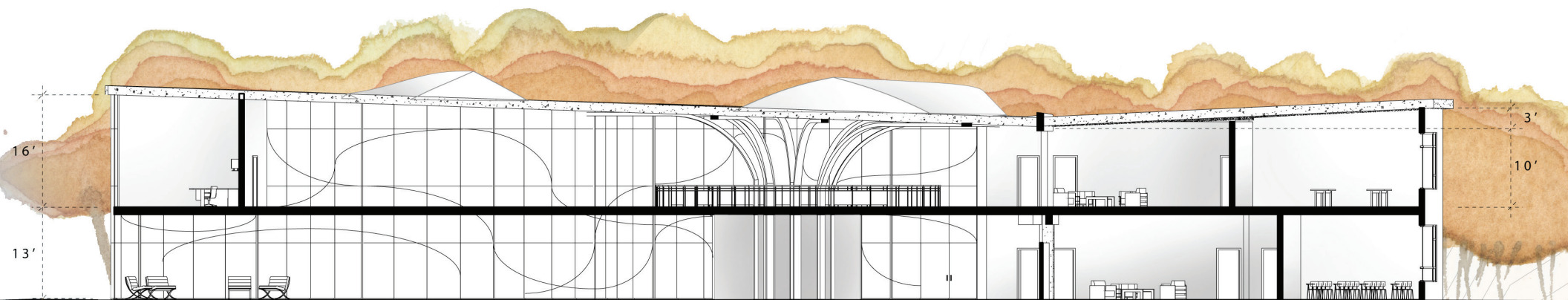
- PRIVATE
- SEMI-PUBLIC
- PUBLIC

clearing in the trees

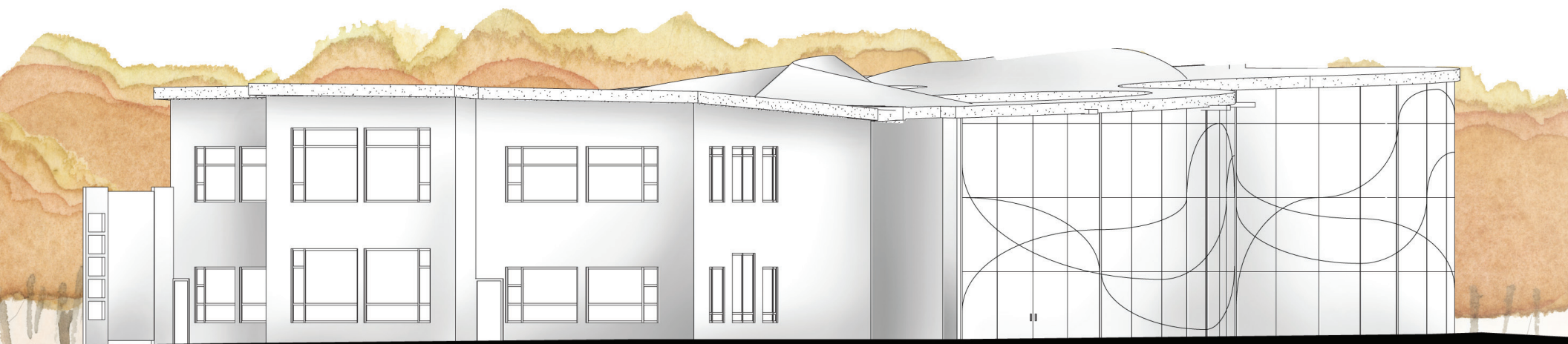
rock outcropping

water's edge

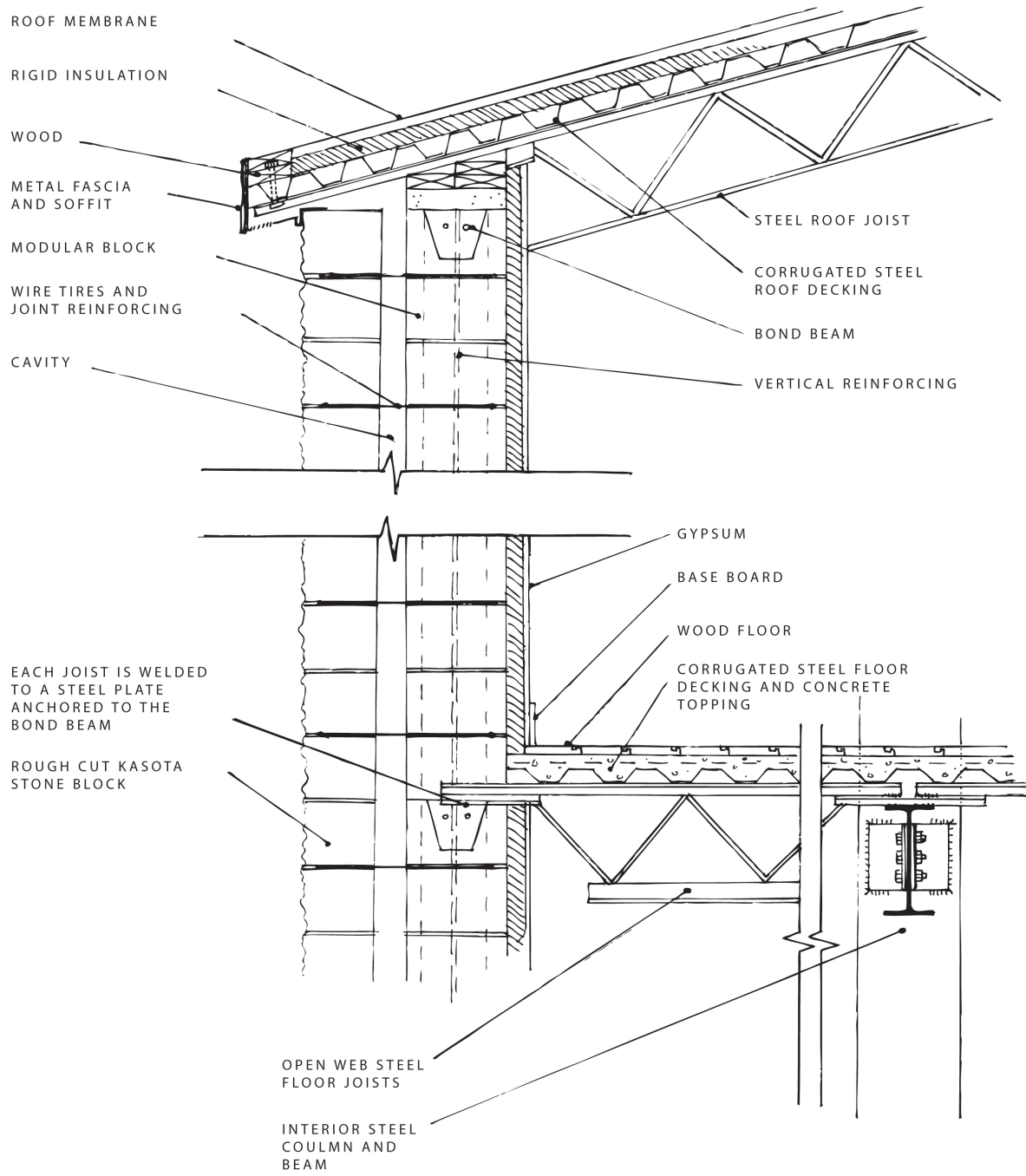


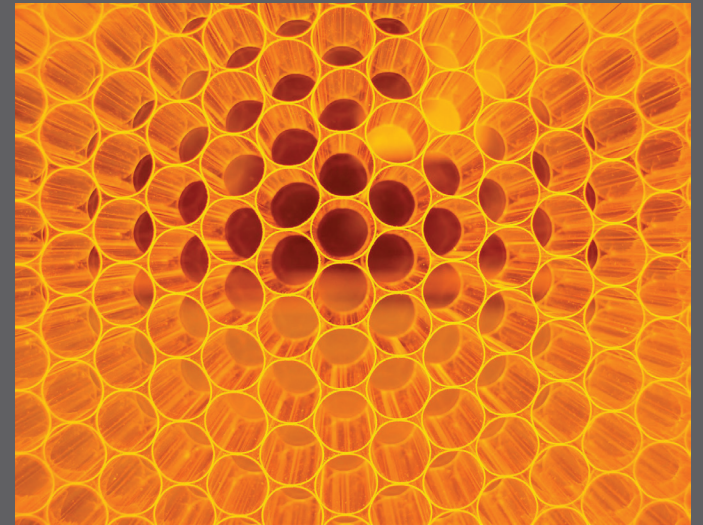
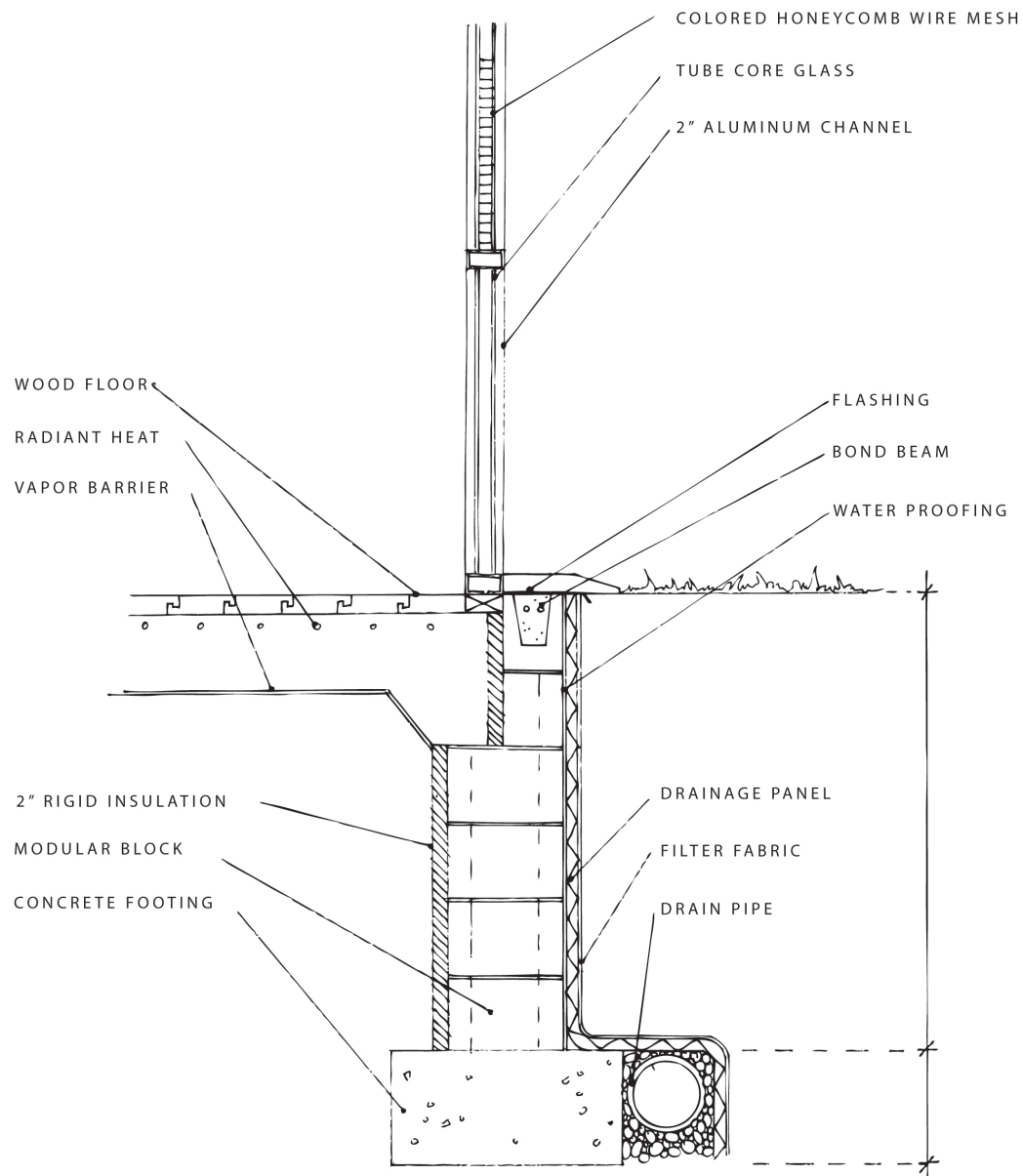


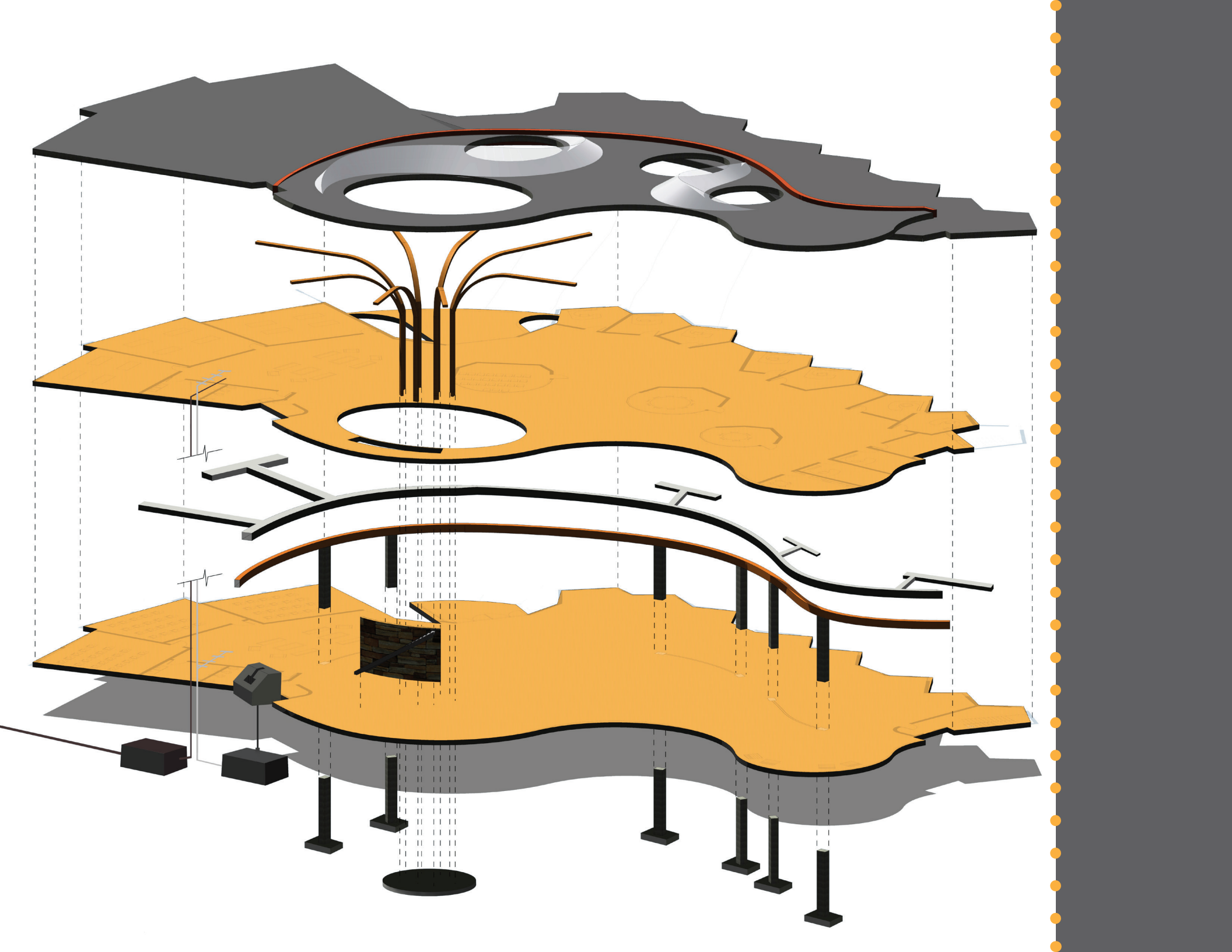
SECTION A

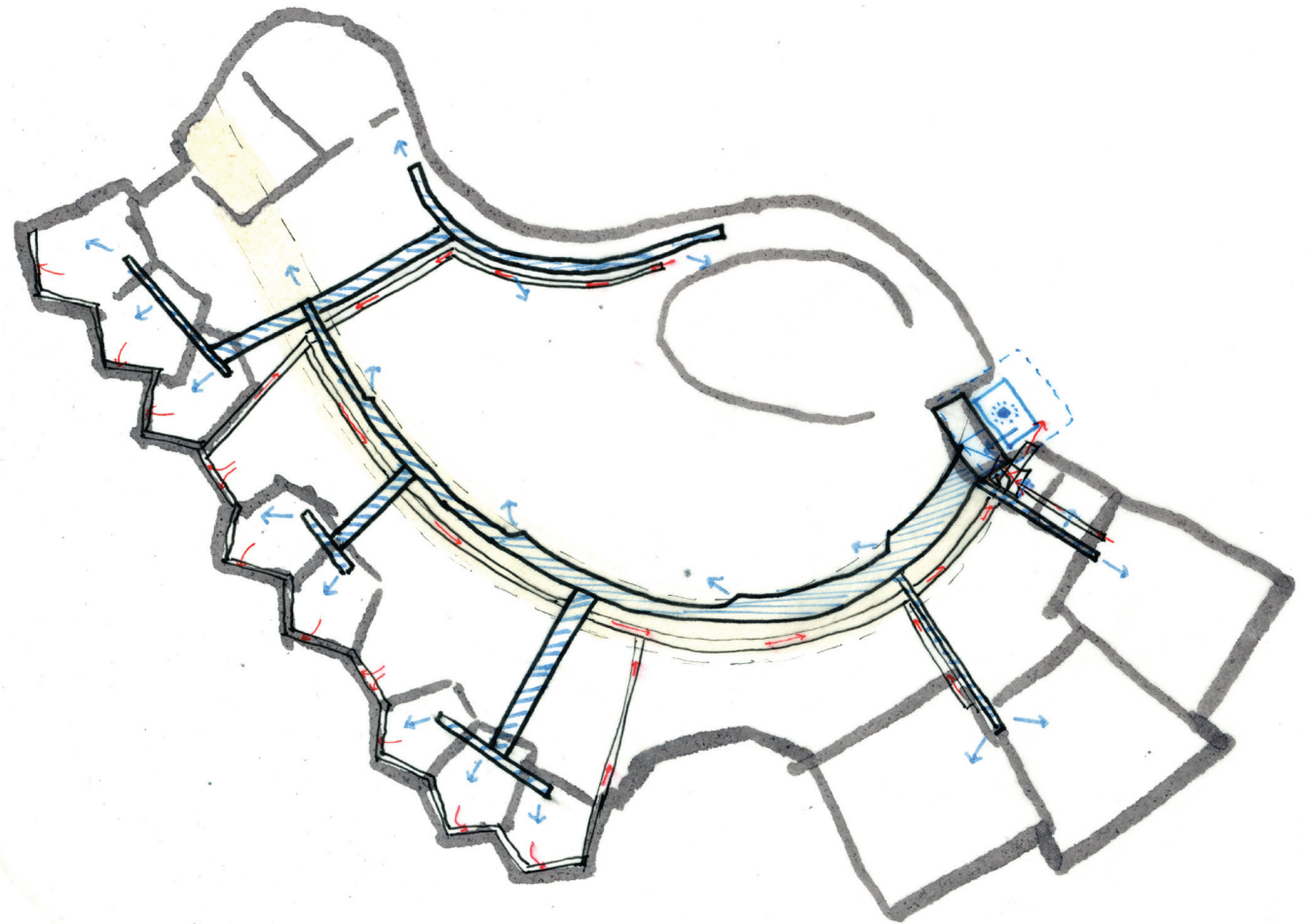
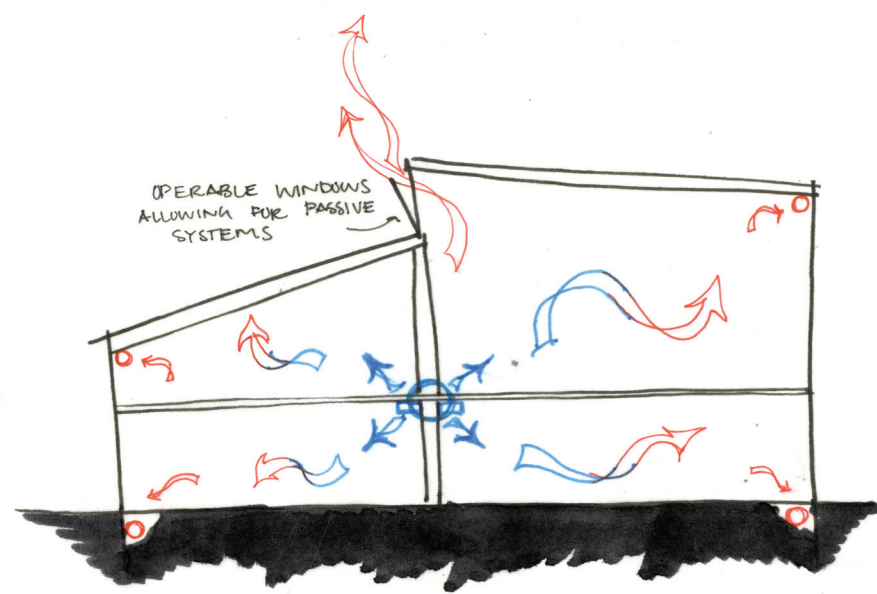


EAST ELEVATION













Thank You

comments
&
questions