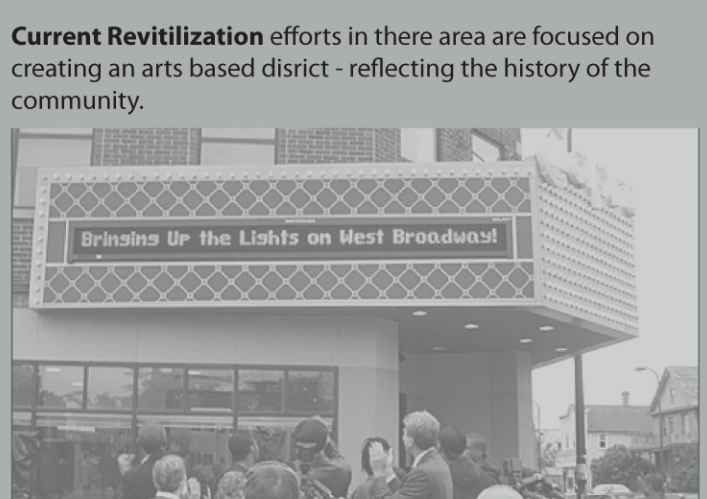
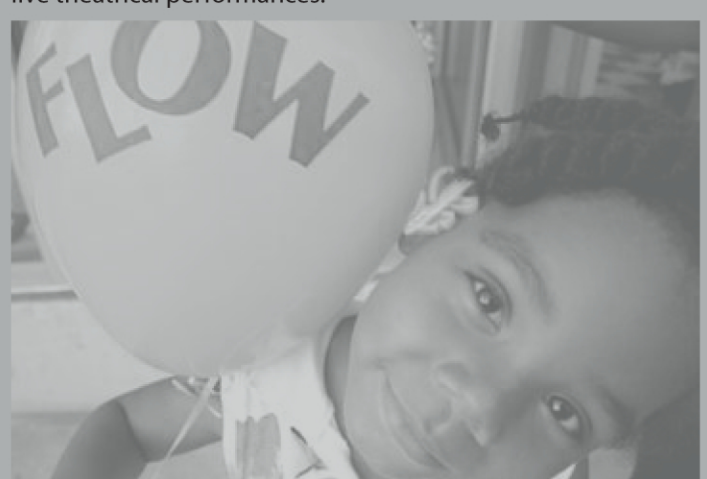


Community Influences



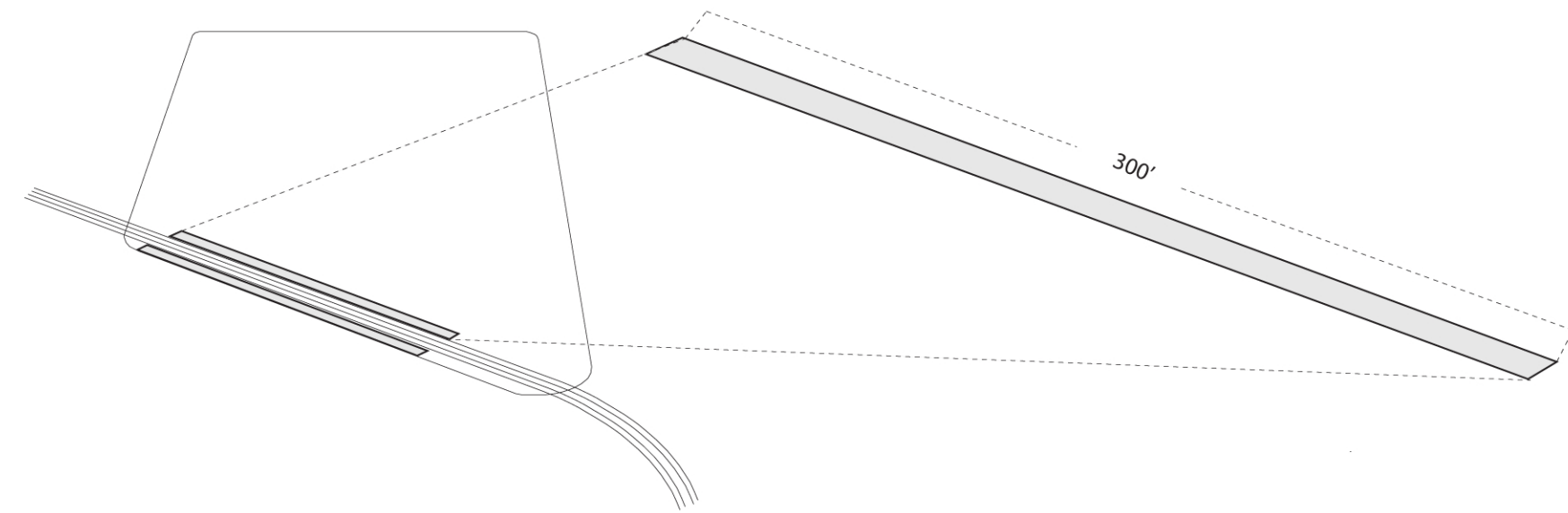
Capri Theater - Located a few blocks from the site - was originally opened in the thirties. After years of being closed it has recently been restored and is now hosting live theatrical performances.



During the Summer the community has started to host an annual "Art Flow" festival.

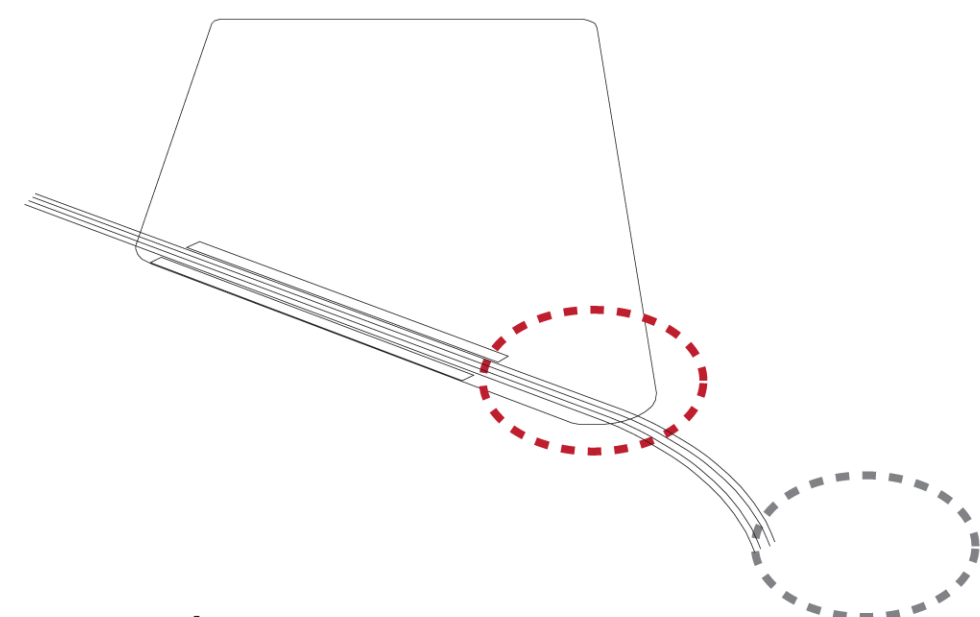
Transit Line and Platforms

Turning the transit line at the south side of the site is the most direct line for fast and efficient transit movement.



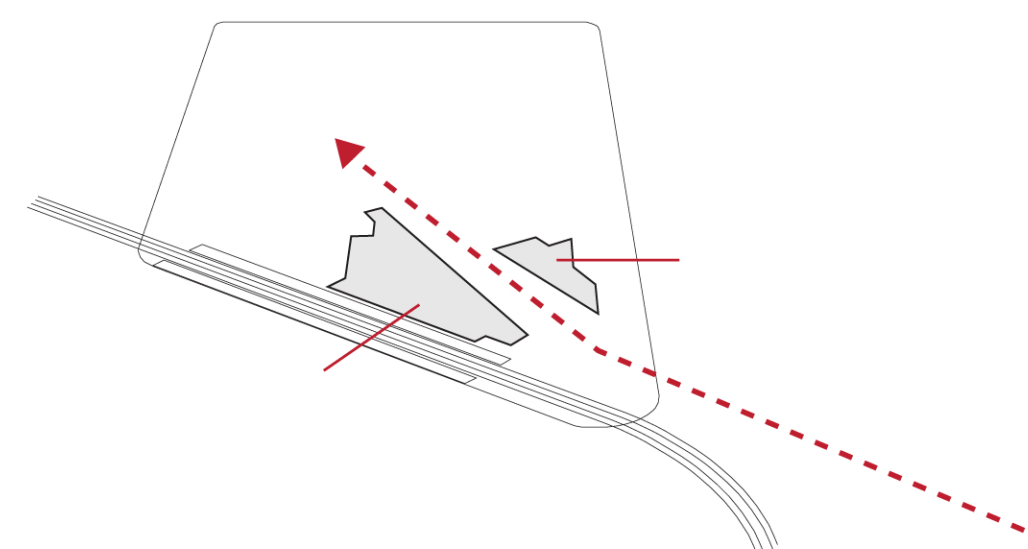
Five Points Plaza

The Site becomes the anchor and end of the West Broadway Arts and Business District. The Public Plaza created at the corner of the site is directly across the street from a small plaza and has views down West Broadway of the Minneapolis Skyline.



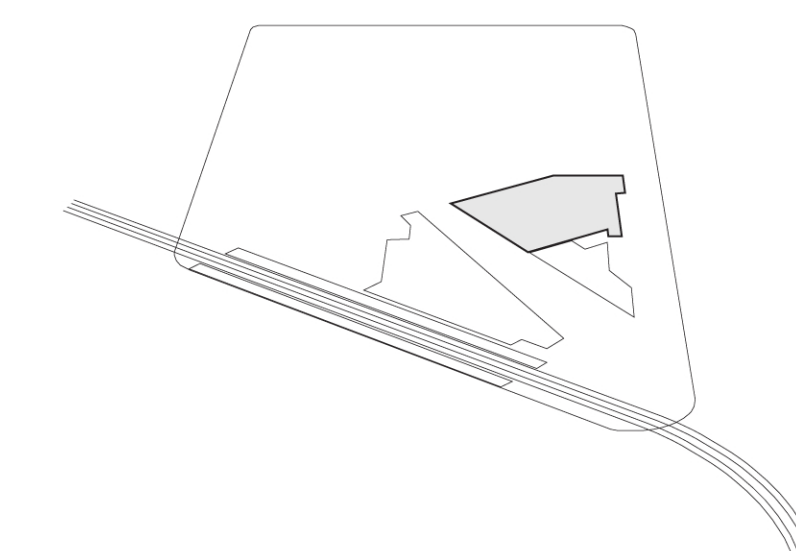
Transit Facilities

The transit facility is split to allow for a large Flex space to continue through the site. The flex space can be utilized by all the building's typologies and the community as a covered extension of West Broadway.

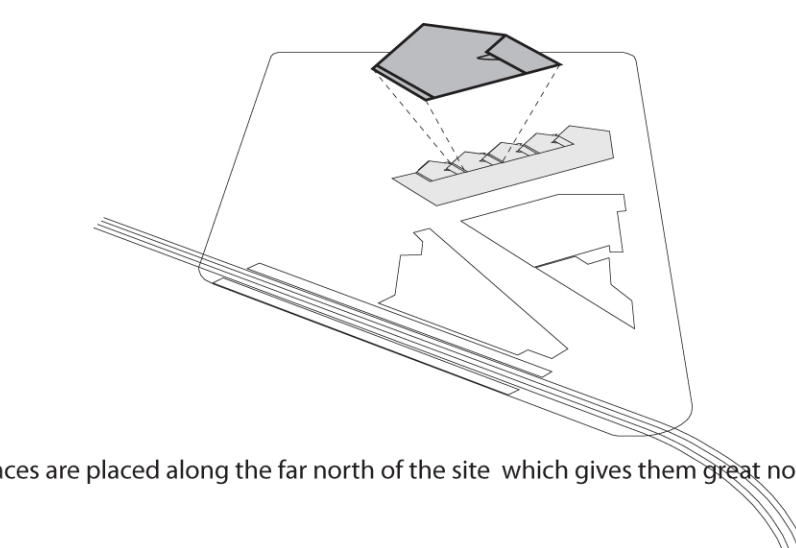
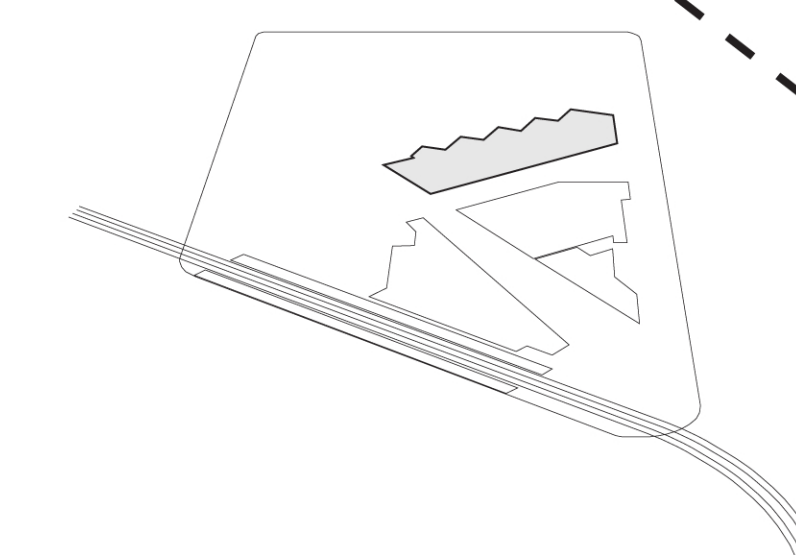


Retail

Retail is centralized and accessible from street and interior Flex space.



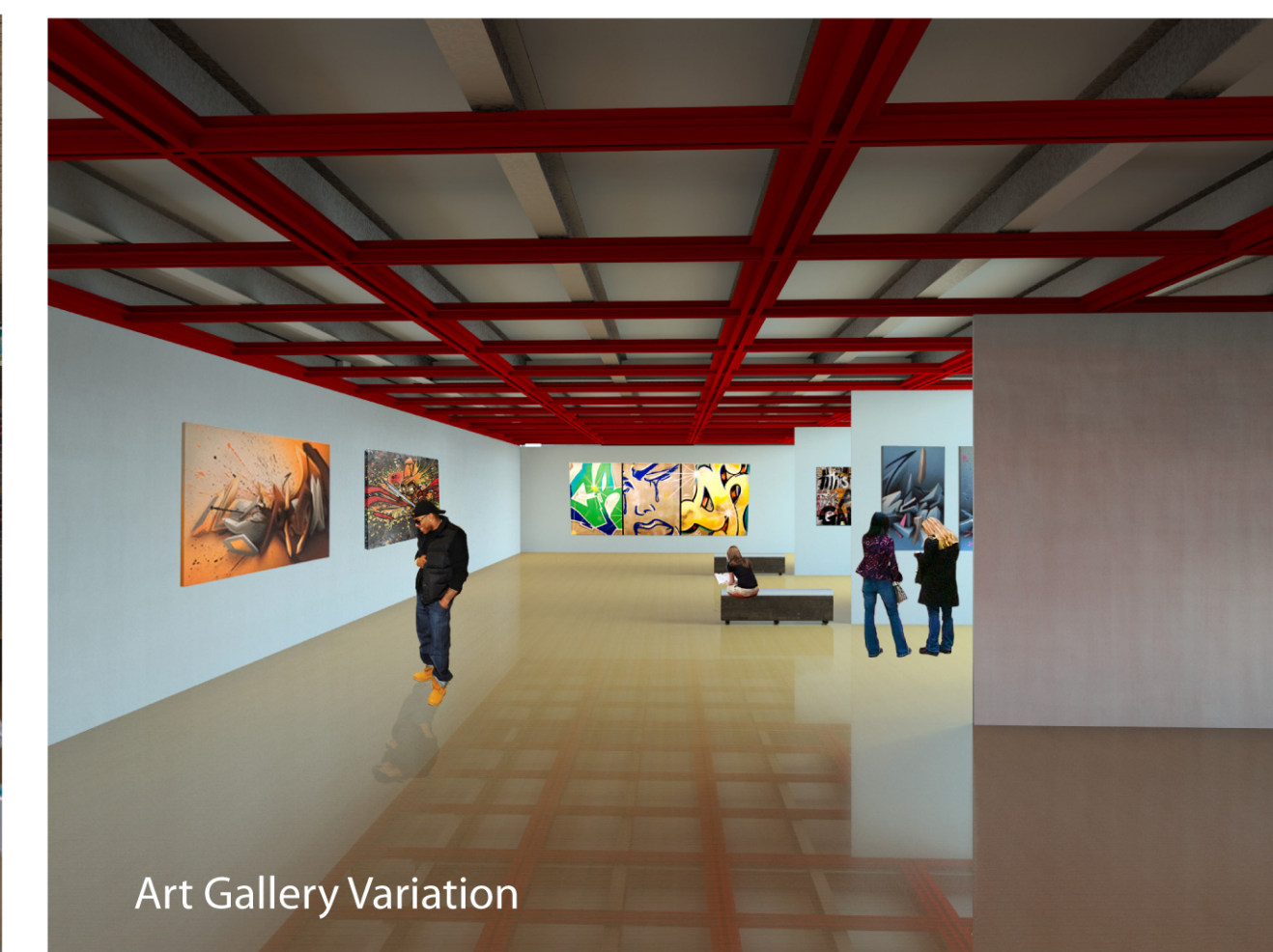
Arts



Studio spaces are placed along the far north of the site which gives them great north lighting and privacy from the transit line.



Retail



Art Gallery Variation



Art Gallery

Moving Walls -Track System

