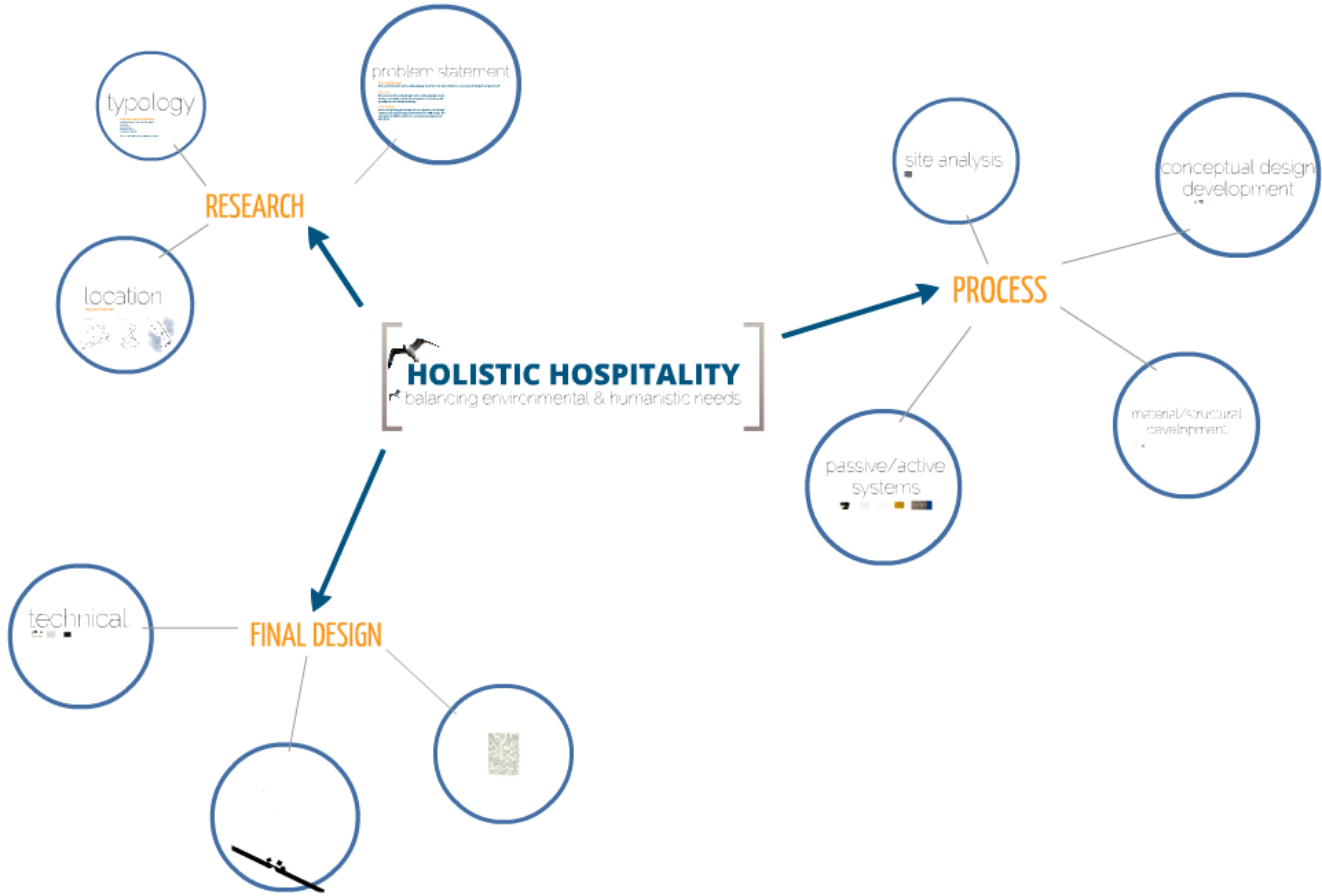


# QUESTIONS?



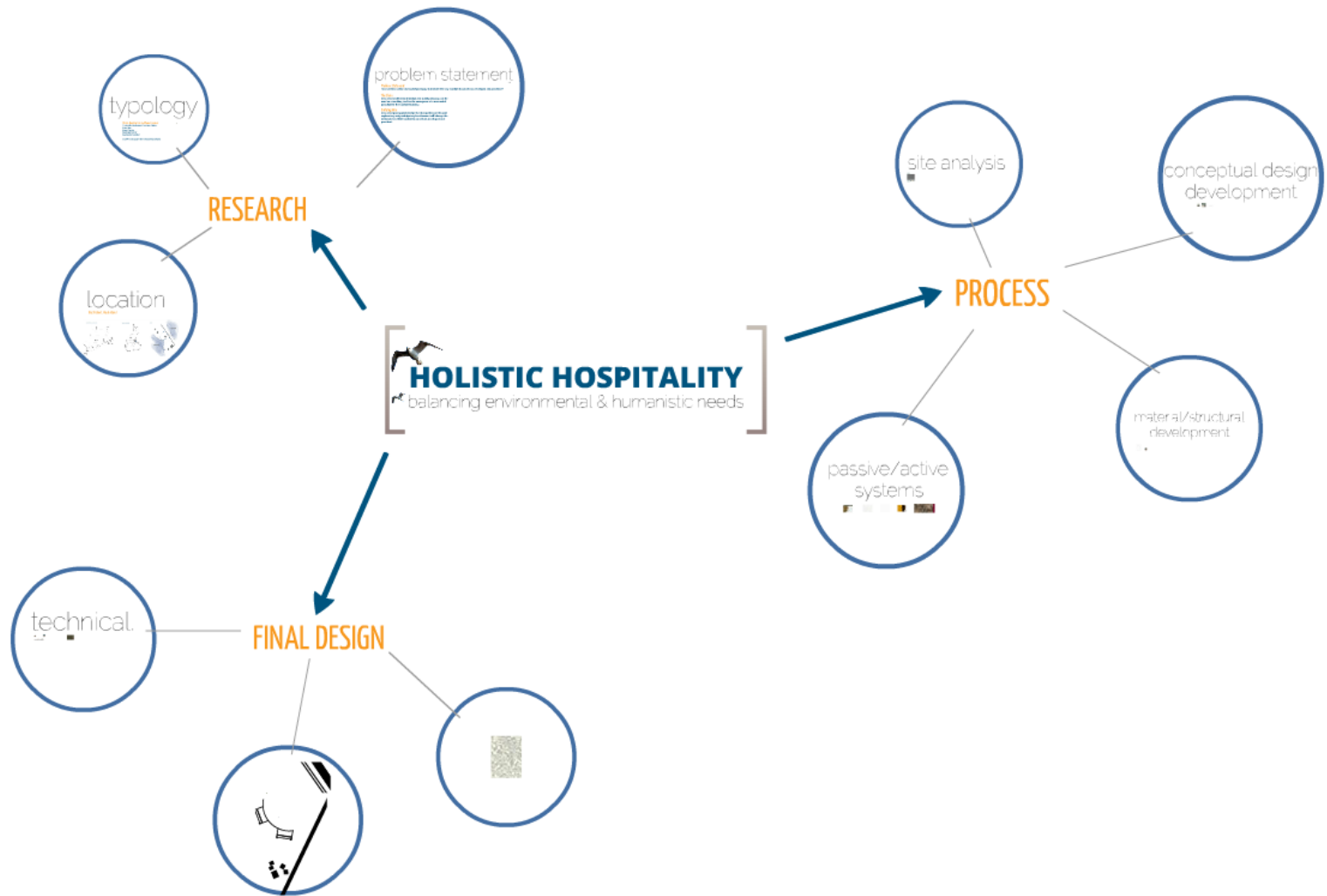


# **HOLISTIC HOSPITALITY**



balancing environmental & humanistic needs





# problem statement

## Problem Statement

**How can innovation and social pedagogy transform the way tourism is conceived, developed and practiced?**

## The Claim

**Innovated architectural design and social pedagogy can be used as a teaching tool for the emergence of a new social paradigm in the tourism industry.**

## Unifying Idea

**Innovated pedagogical design that is experienced through exploratory and participatory involvement will change the demands for which tourism is conceived, developed and practiced.**

pedagogical design :

the need to accommodate the scale of change in the professional practice with its new demands of requisite knowledge and skills that presents this generation of design pioneers with a new challenge.

**building educates - visitors challenge status quo - paradigm changes**

"We see a world of abundance, not limits. In the midst of a great deal of talk about reducing the human ecological footprint, we offer a different vision. What if humans designed products and systems that celebrate an abundance of human creativity, culture, and productivity? That are so intelligent and safe, our species leaves an ecological footprint to delight in, not lament?"

- William McDonough



Economic Prosperity

### Humanistic Needs

Meeting the needs of humans, without compromising the future needs of the Block Island's occupants.

Efficient ventilation system to support the comfort and health of occupants.

Local food, materials and labor used to boost the economy of Block Island.

building



- Water Conservation
- Rainwater Harvesting System
- Greywater Re-Use
- Native Landscaping
- Pedagogy Design
- Interactive Water Collection System
- Local Material Usage
- Exposed Sustainable Systems
- Energy Use Reduction
- Geothermal Well Field
- Cooling Roof Pond System
- Double Skin Curtain Wall System

landscape



### Environmental Responsibility



Cultural Pride



# typology

## Hotel, Restaurant and Event Center

Twelve Hotels Rooms, Fourteen Cabins

Hotel Spa

Event Center

Business Center

Restaurant and Bar

50,474 total square feet of building complex

**Muirra Hotel, Czech Republic**



Through innovative design techniques create a different experience to the visitors than a traditional hotel.

**Bama Eco Resort, unbuilt**



Pay close attention to the surrounding environment, taking advantage of views, and respect the land.

**Endemico Hotel, Mexico**



Examine the environment and look into how architecture can shape the ways you see landscape. Extend my explorations of innovative pedagogical design to the site, and look at how architecture and landscape architecture can influence each other.

# location

## Block Island, Rhode Island

NORTHEAST REGION



BLOCK ISLAND



SITE





Block Island offers the vacationer what does not seem possible anymore - simple relaxation in a startling beautiful place. The Island is famous for its miles of free public beaches, sparkling clear water, dramatic bluffs, preserved open spaces, and fun-filled activities for visitors of all ages. ...Block Island is "The last great place" ...

Block Island Tourism Council



YouTube



photo by Bobb Kurland



South









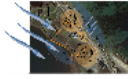
**PROCESS**







BASE MAP



a



north



northeast



south



southeast



southwest



west

b



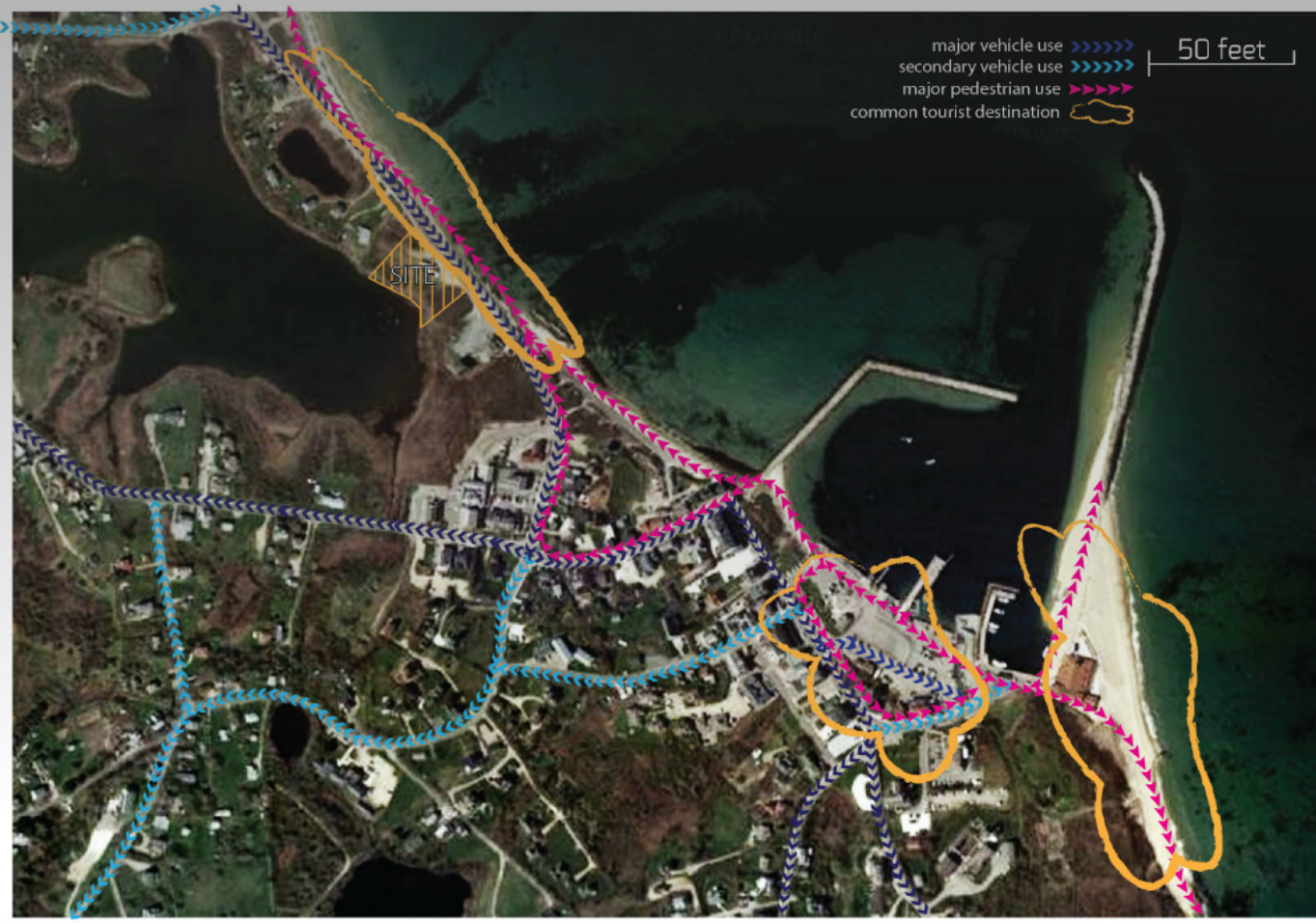
north



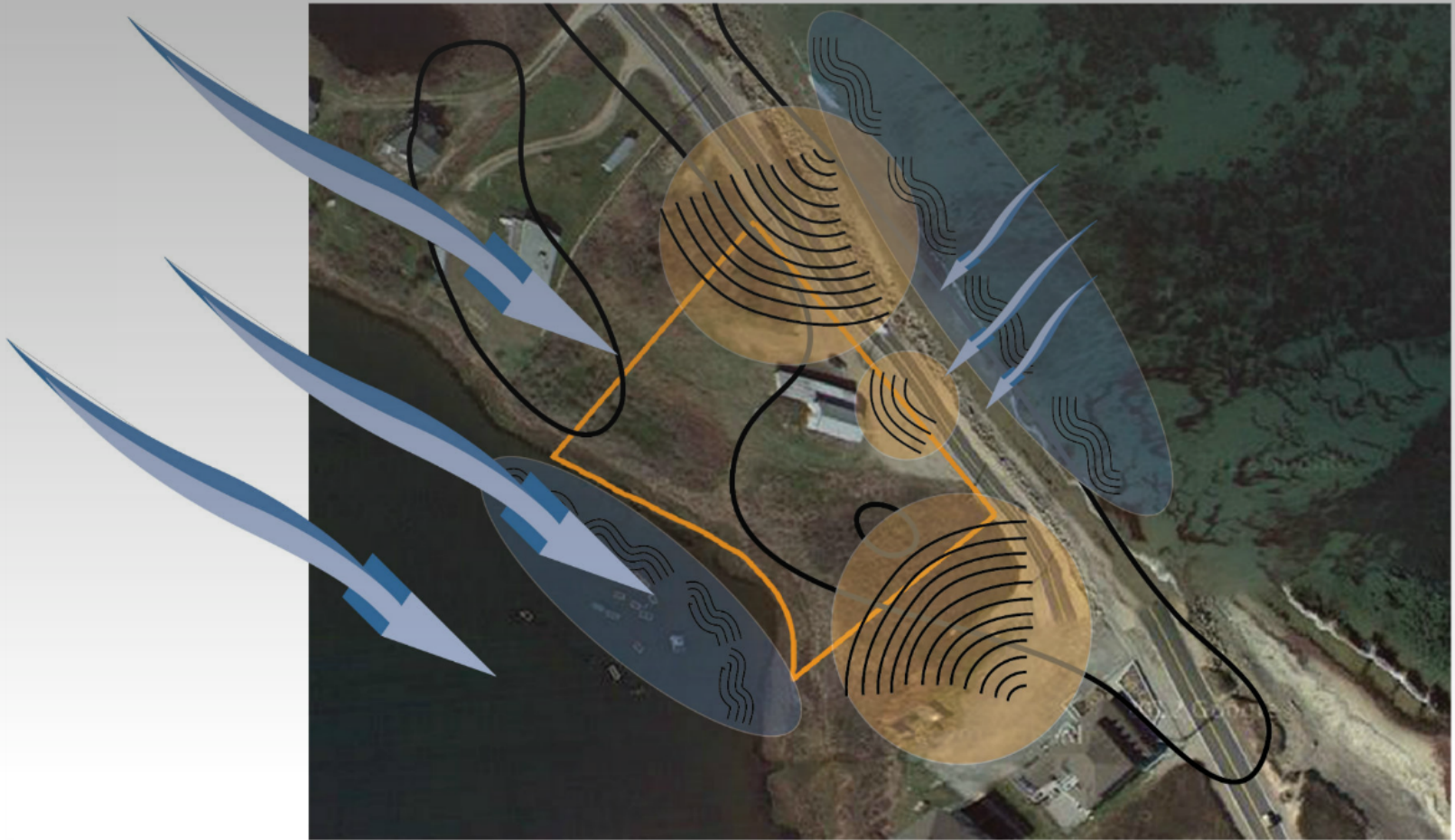
south

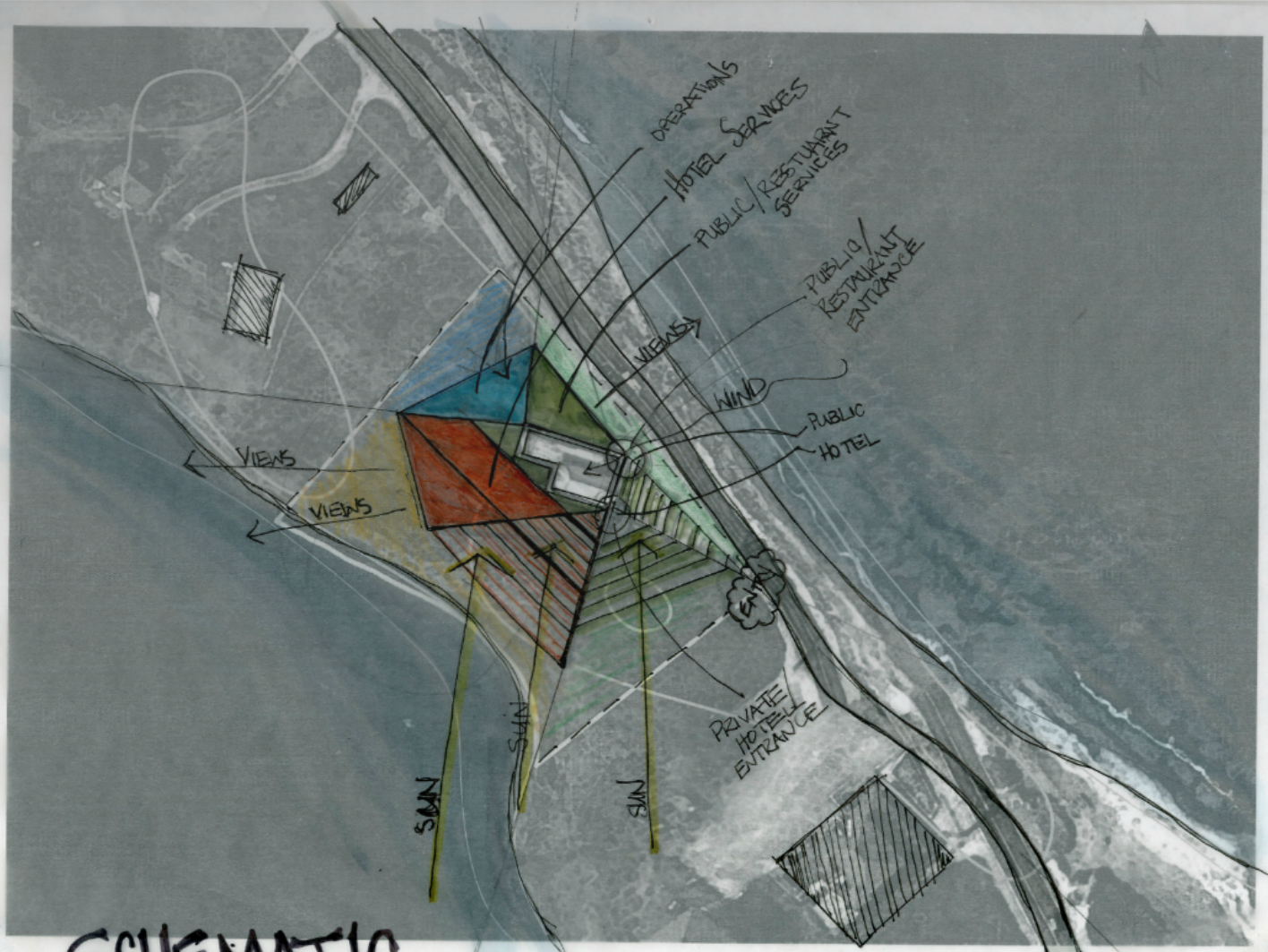


west









**SCHEMATIC**  
Site Context Analysis



conceptual design  
development

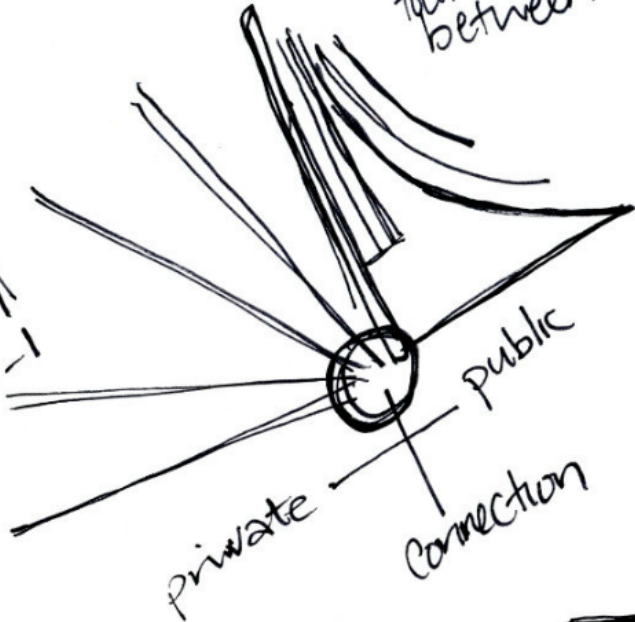
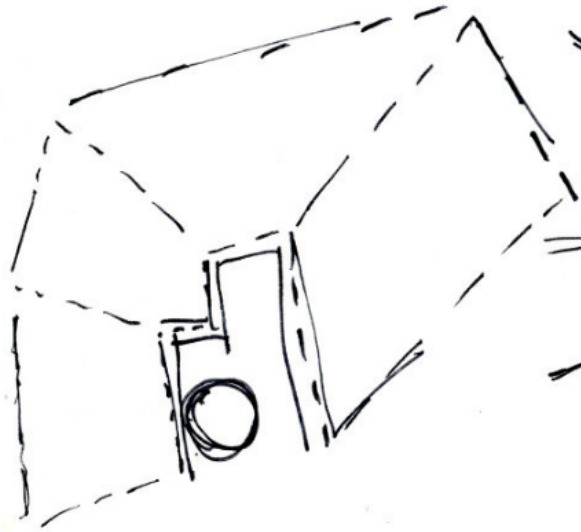
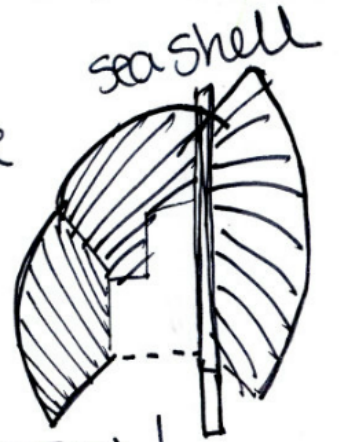




Inspiration

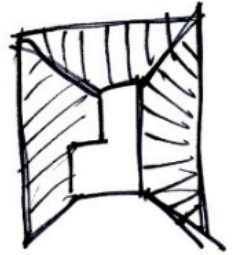
Reflection  
Existence

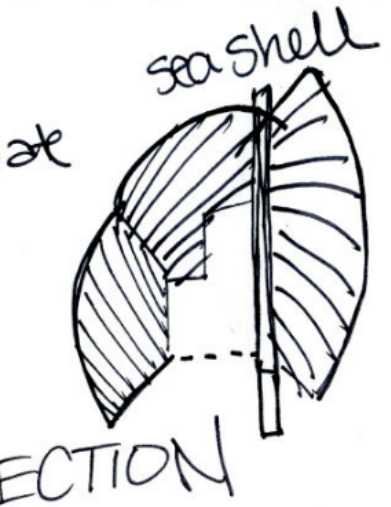
store wall is an artifact from the past. It acts as foundation + separation between public + private



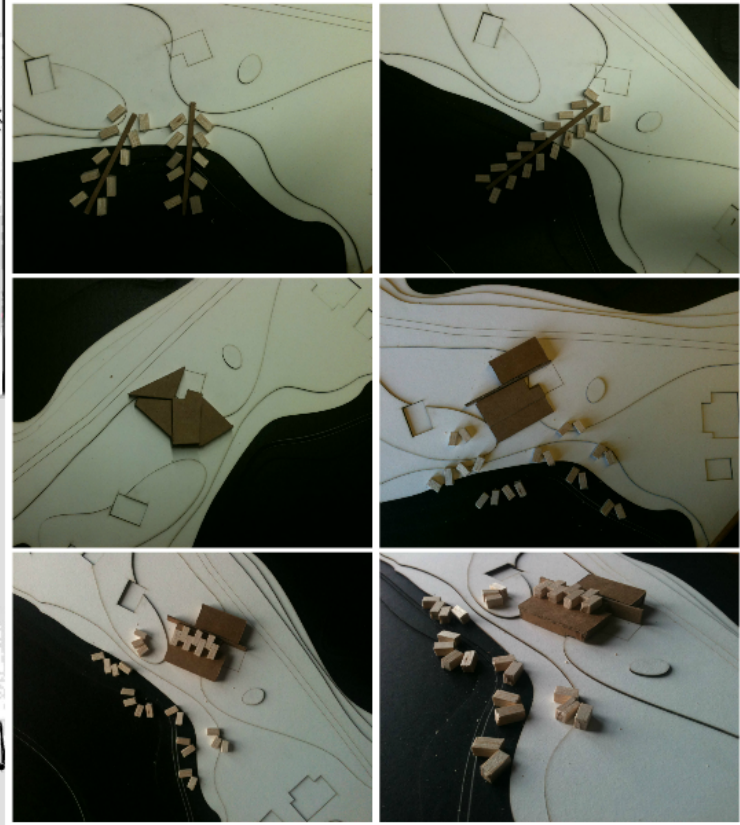
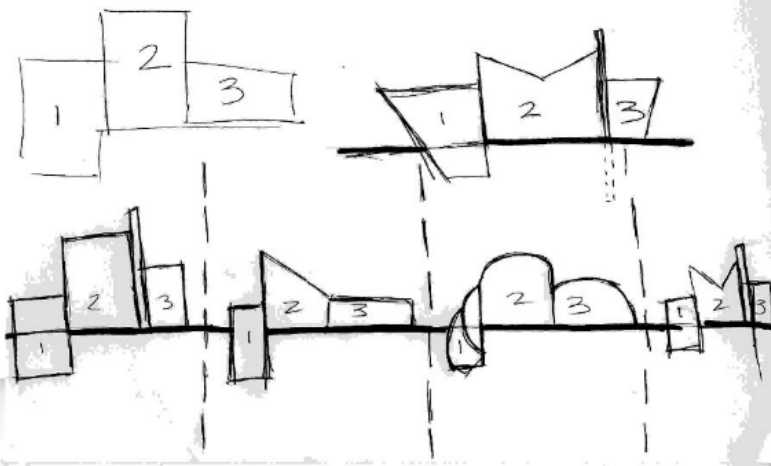
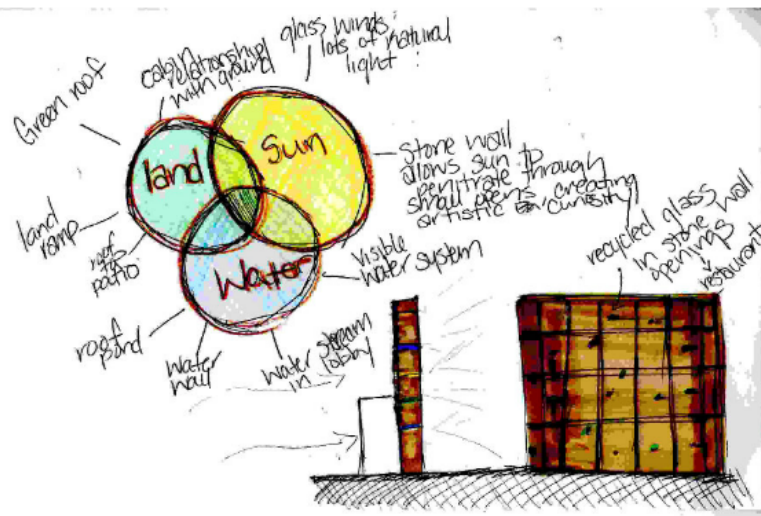
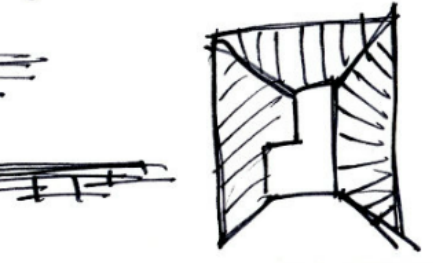
REFLECTION

↓  
building that works with water + land

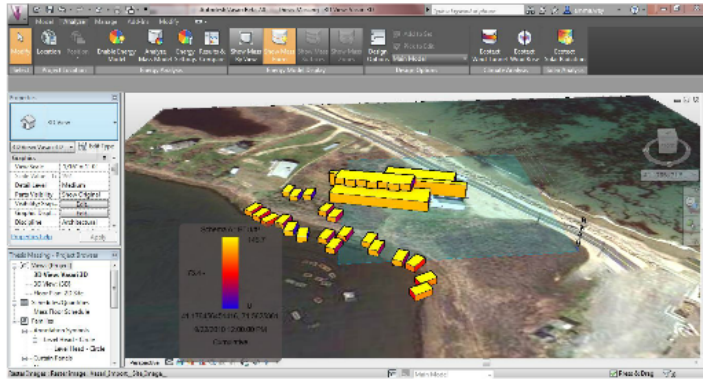




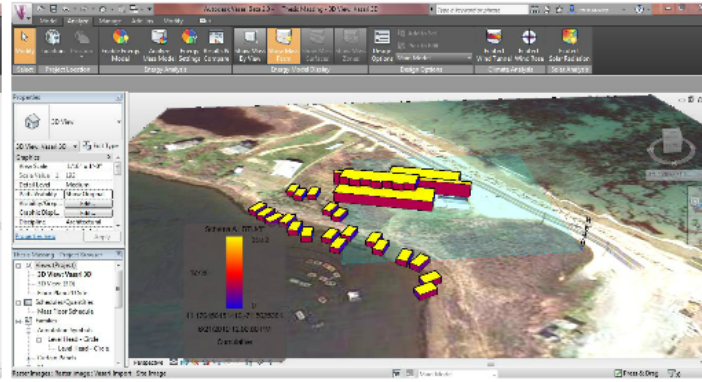
that works with water & land



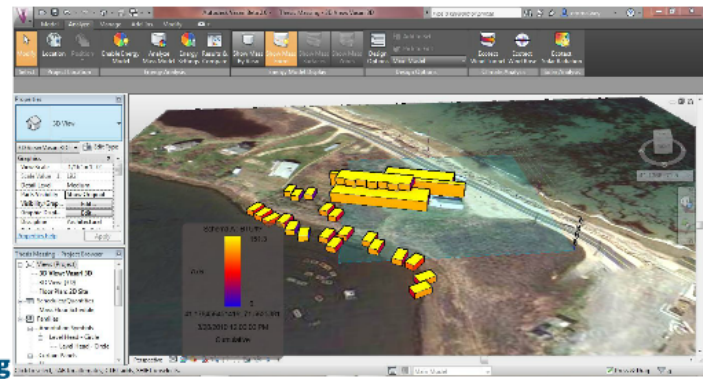




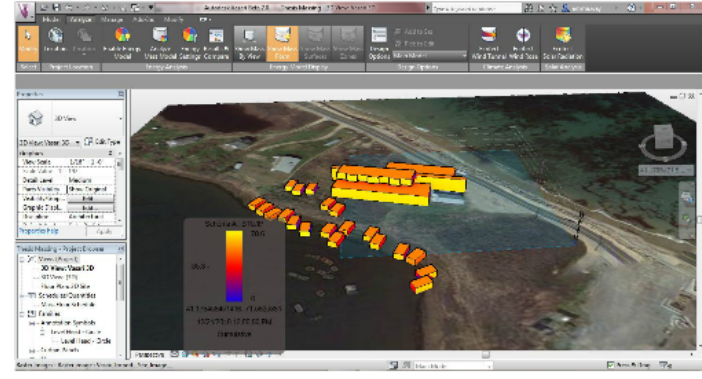
fall



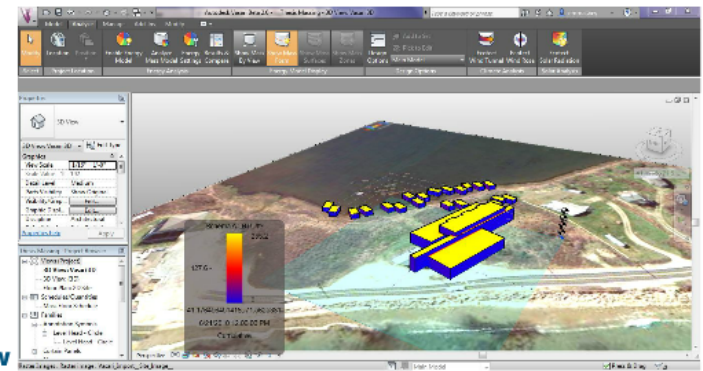
summer



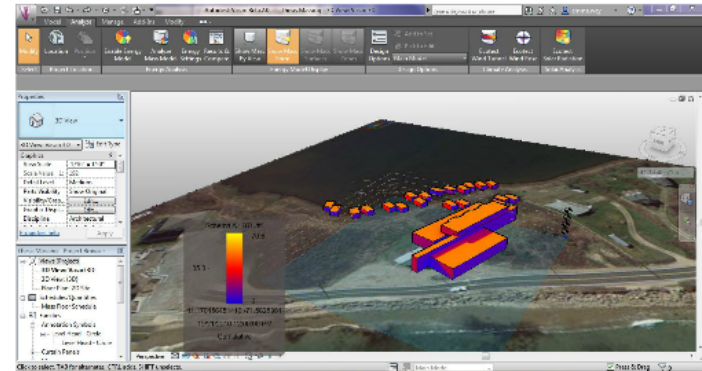
spring



winter



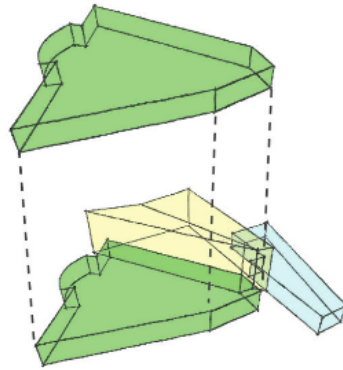
summer sw



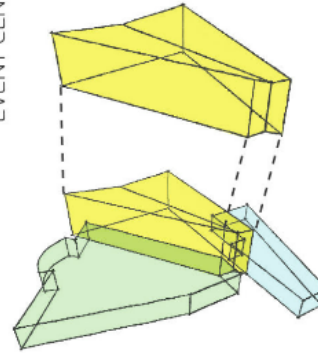
winter sw

# SPATIAL LAYOUT

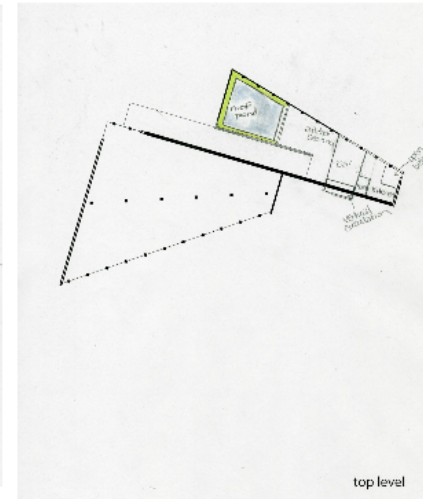
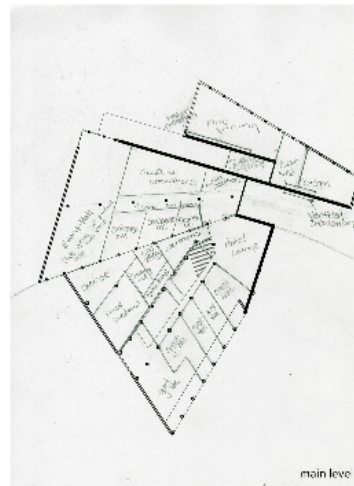
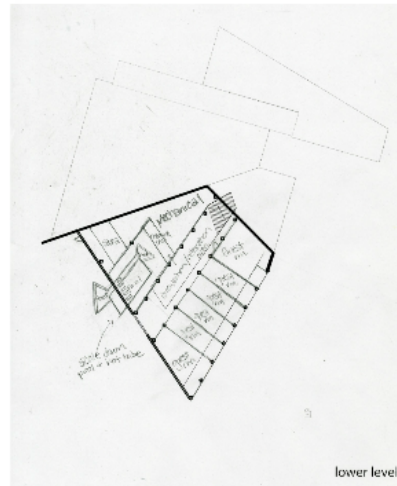
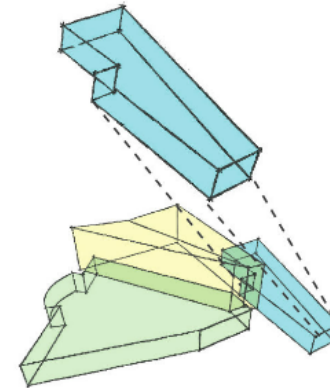
HOTEL & SPA



EVENT CENTER



RESTAURANT





material/structural  
development





**What materials can compliment the landscape?**

**... are unique to Block Island?**

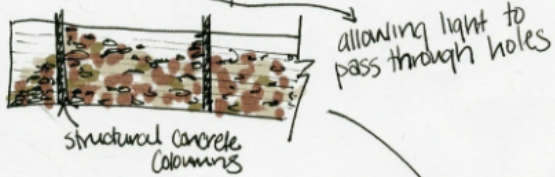
**... and create exploratory involvement with visitors?**

Materials

Materials + Construction

Concrete - Autoclaved cellular concrete — lightweight  
— most energy efficient  
— stone, extenar finish  
— stone tile

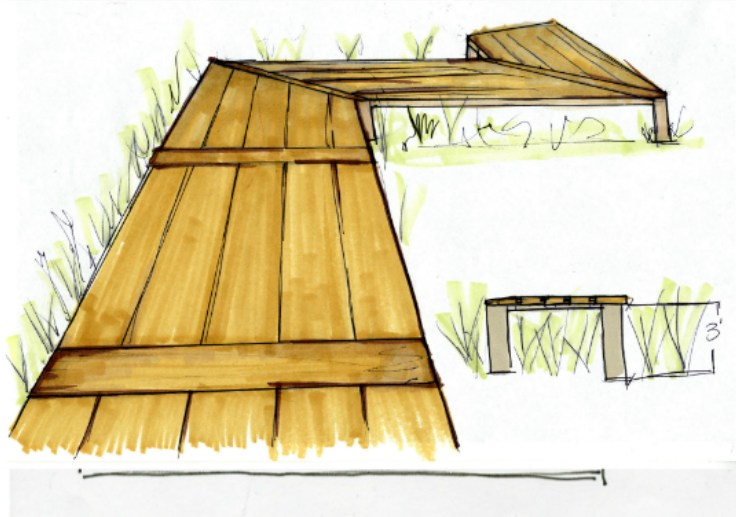
Wired Stone Wall — local stone loosely packed in wired (steel?) mesh



WATER  
MOVEMENT

**GLASS**

touches of Cooper (Copper) for aesthetics





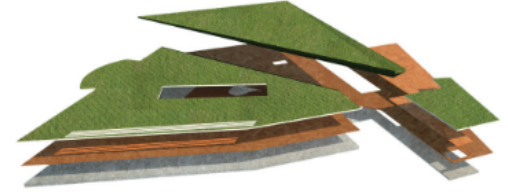
**How can the structure compliment building materials?**

**... will be economically practical?**

**... can enrich the overall design?**

# STRUCTURE

FLOORS AND ROOF



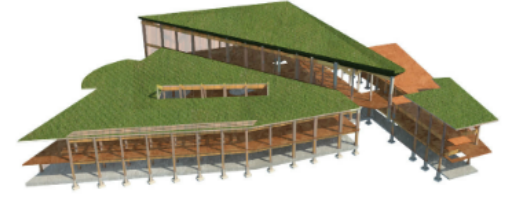
HEAVY TIMBER FRAMING

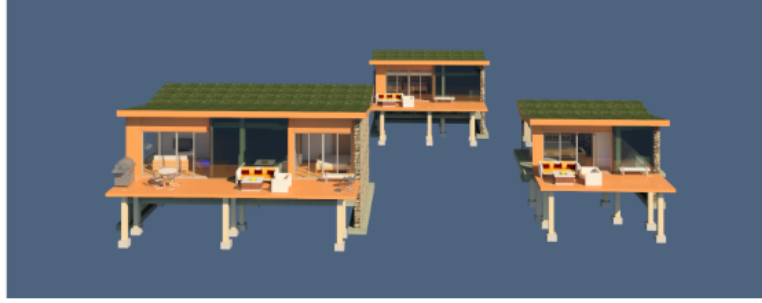
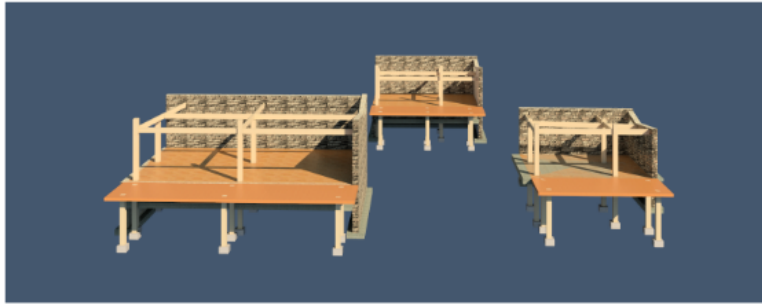


FOOTING PILES



THE GREAT EGRET STRUCTURE





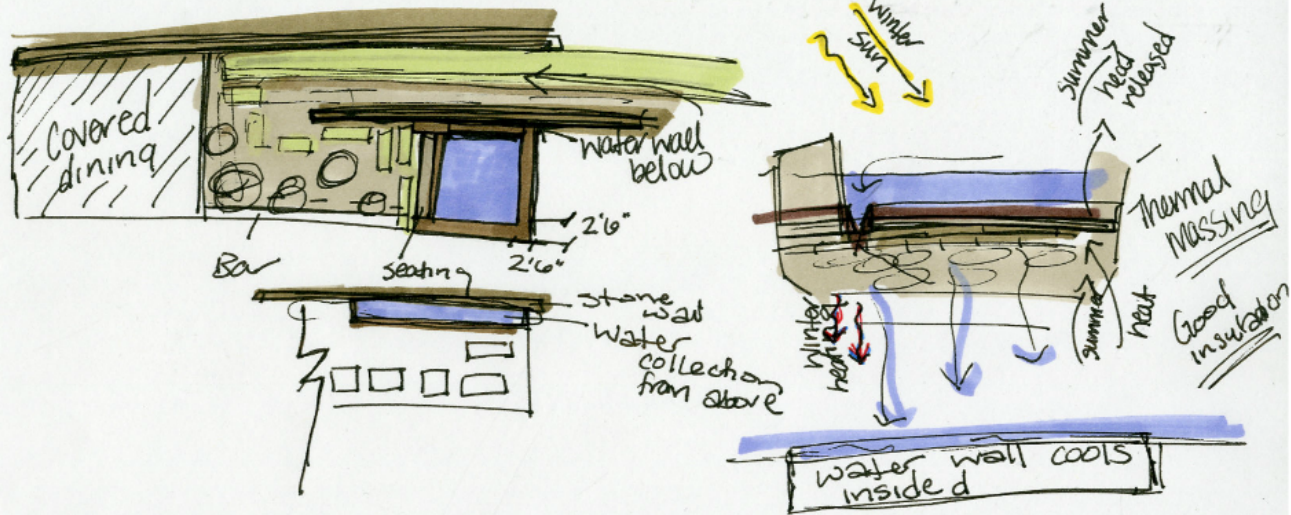
# passive/active systems





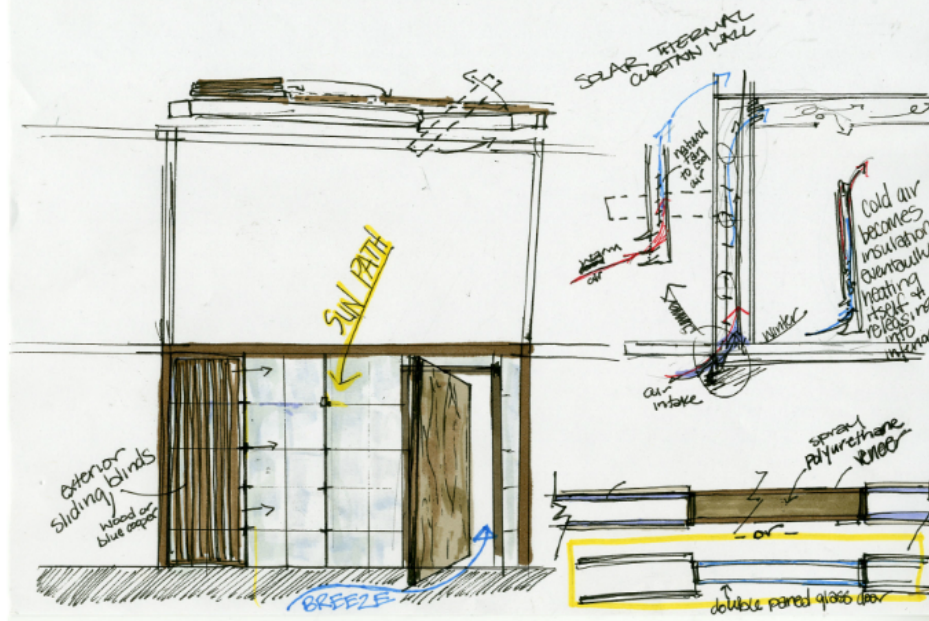
Roof Pond - Summer (thermal panels placed over roof pond in winter)

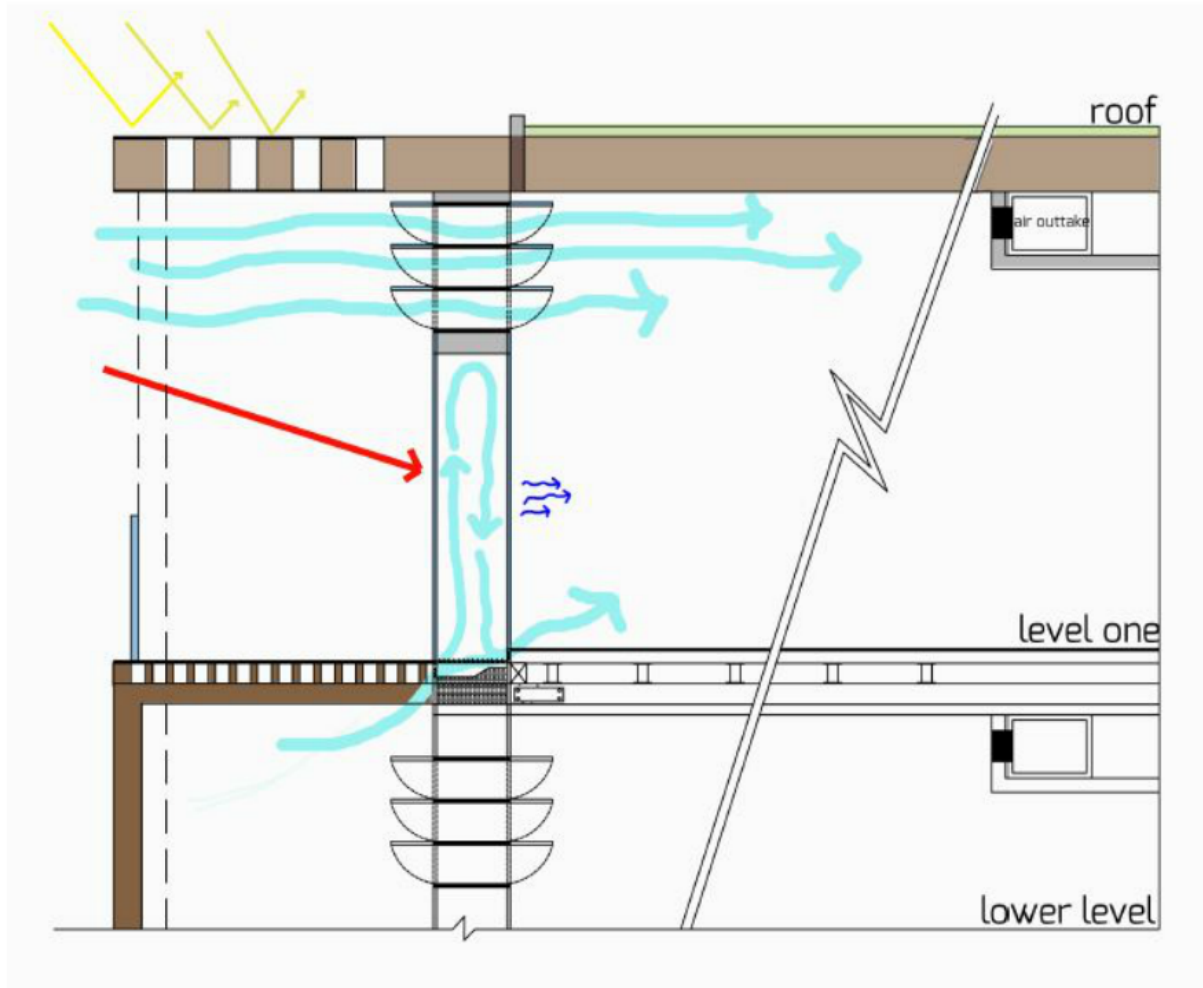
- Need to add more structural support

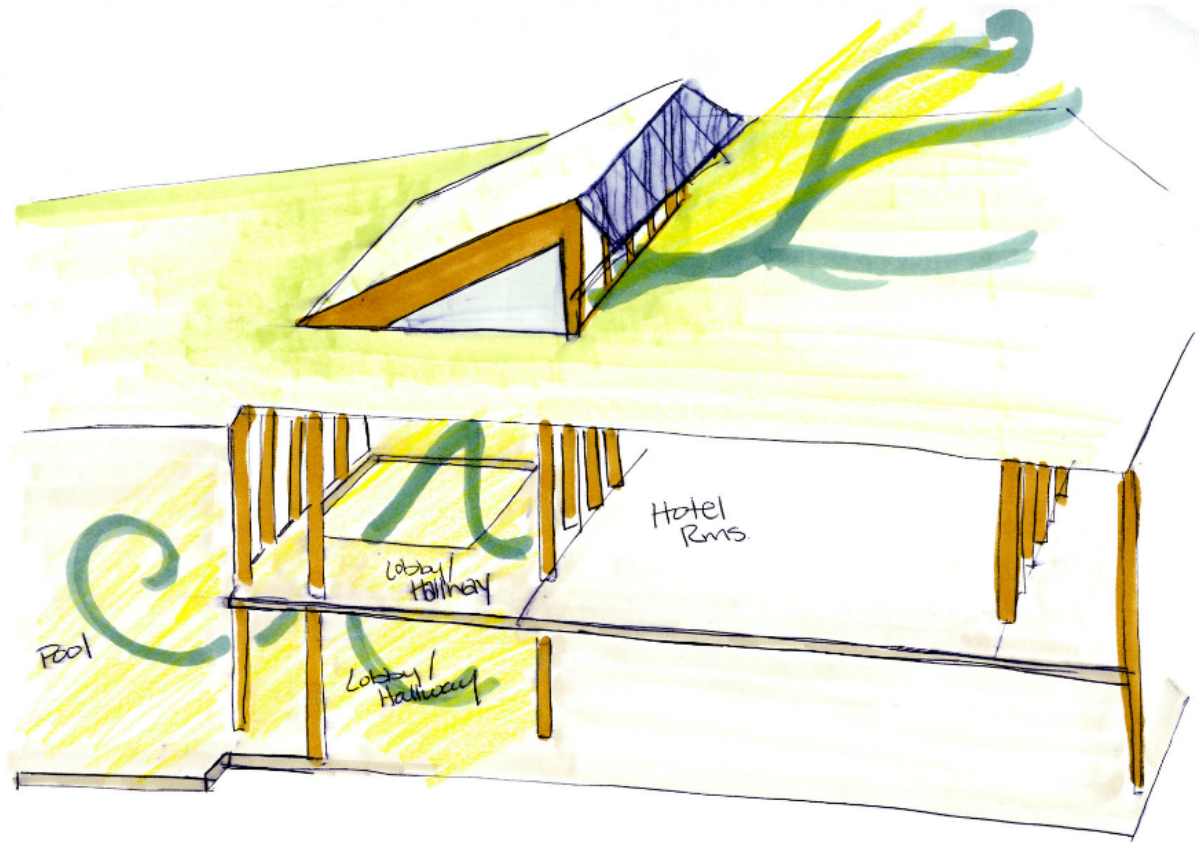


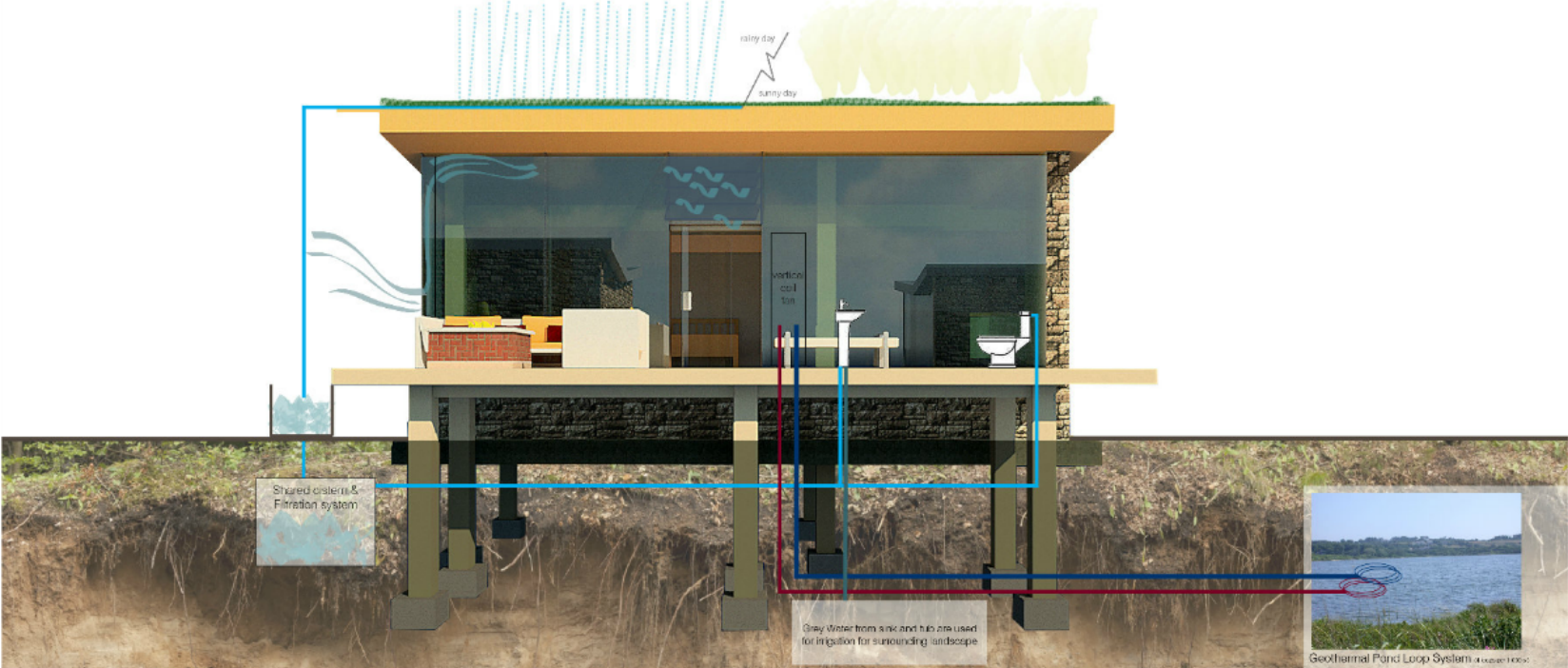


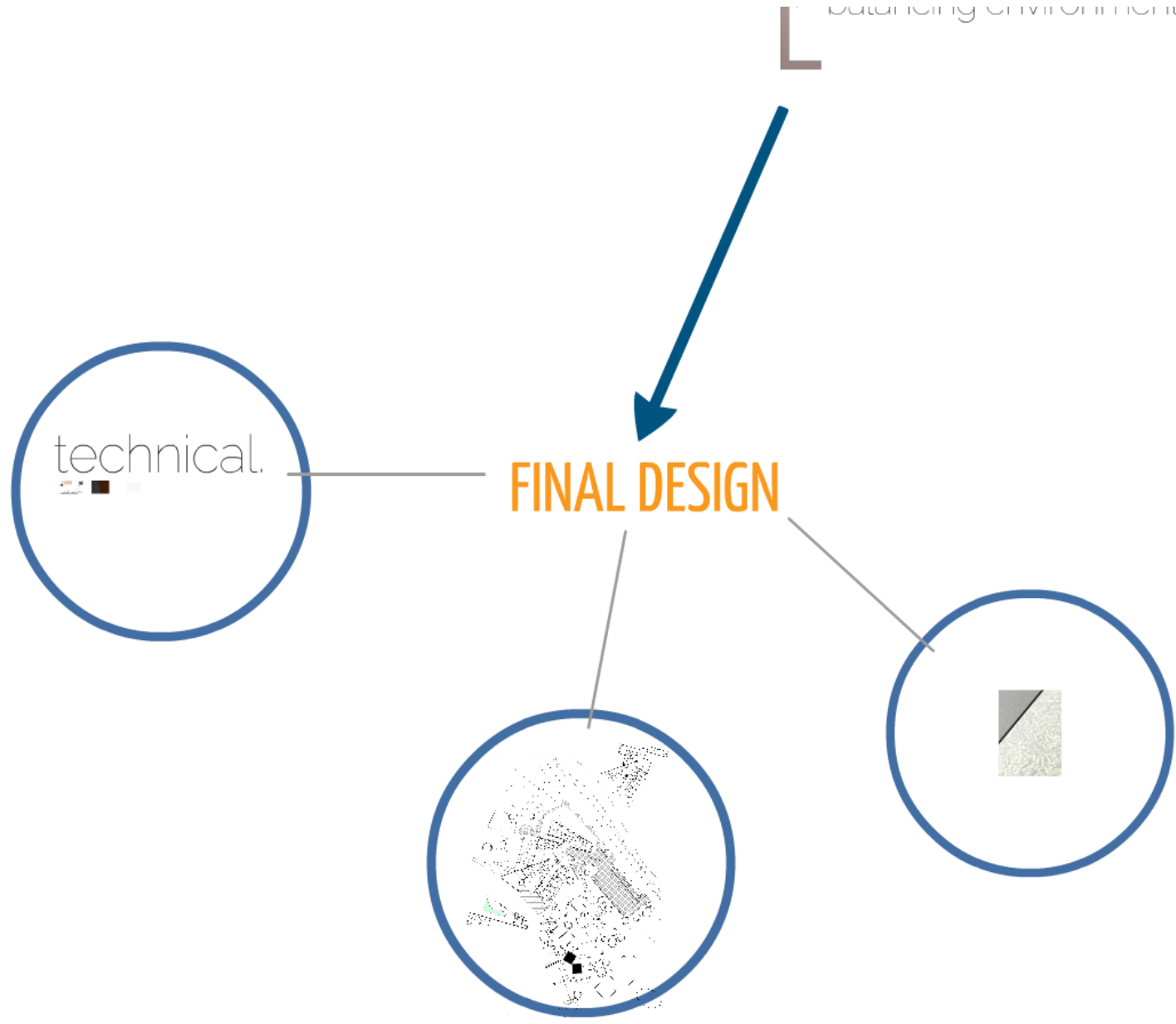
WINDOW DETAIL +  
HOTEL SWING DOOR  
ROOM





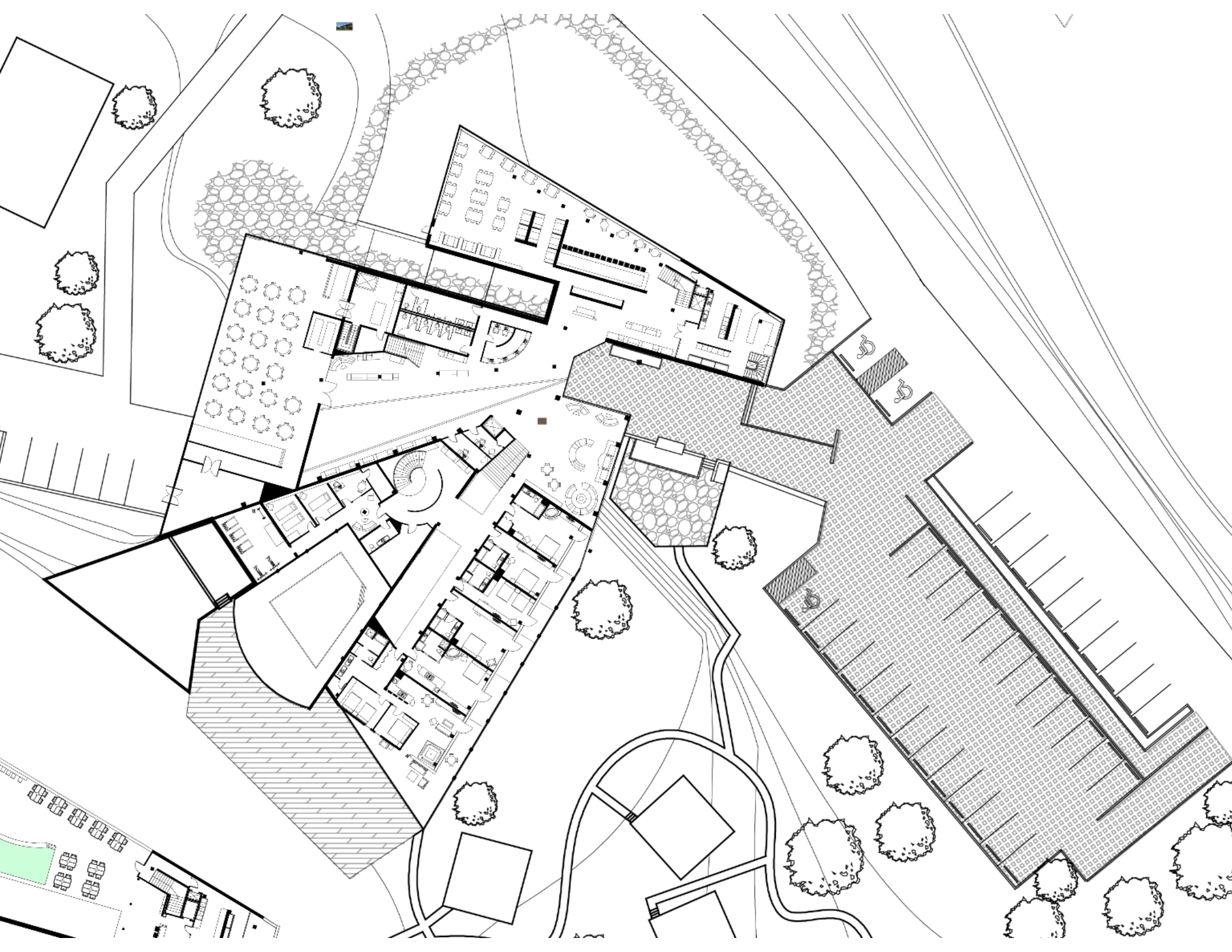








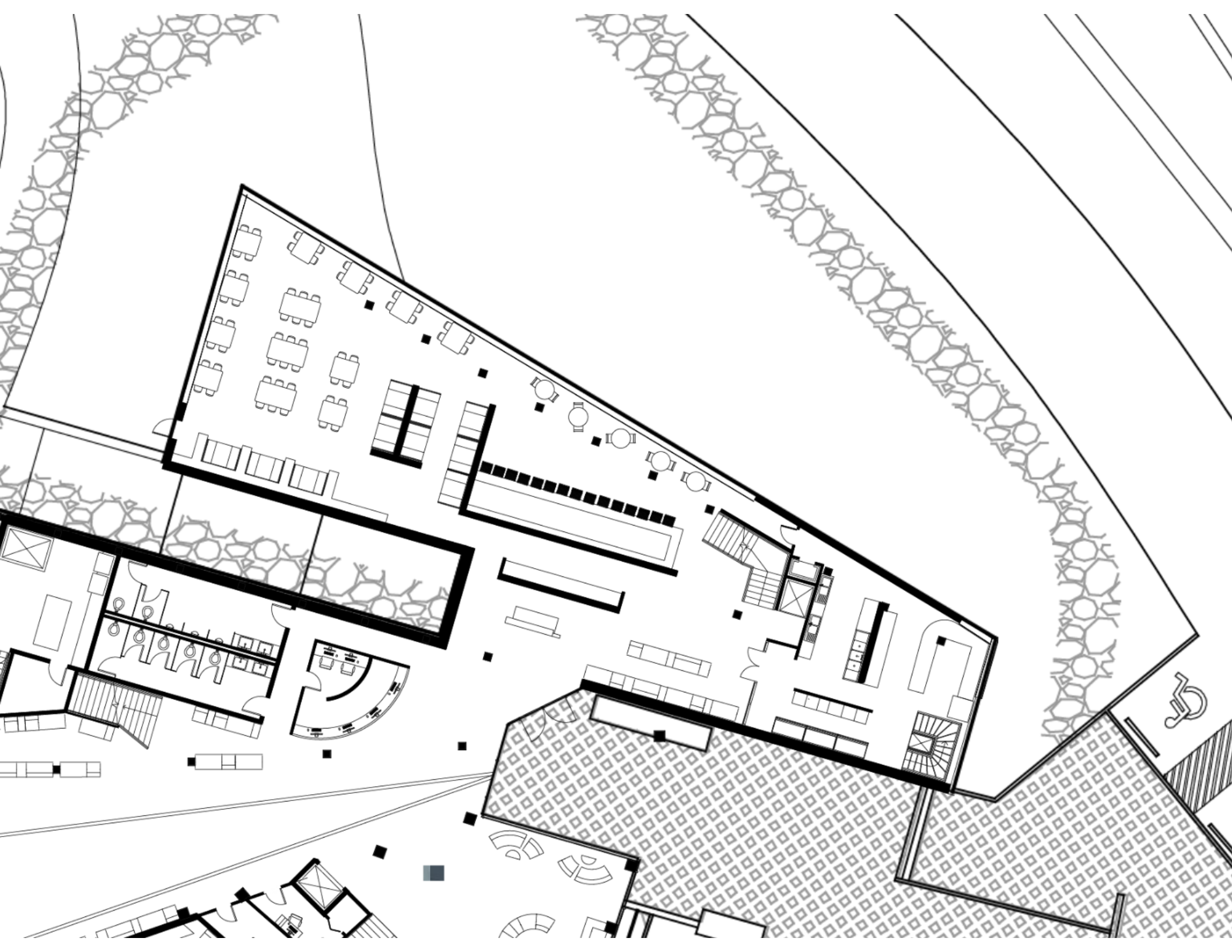






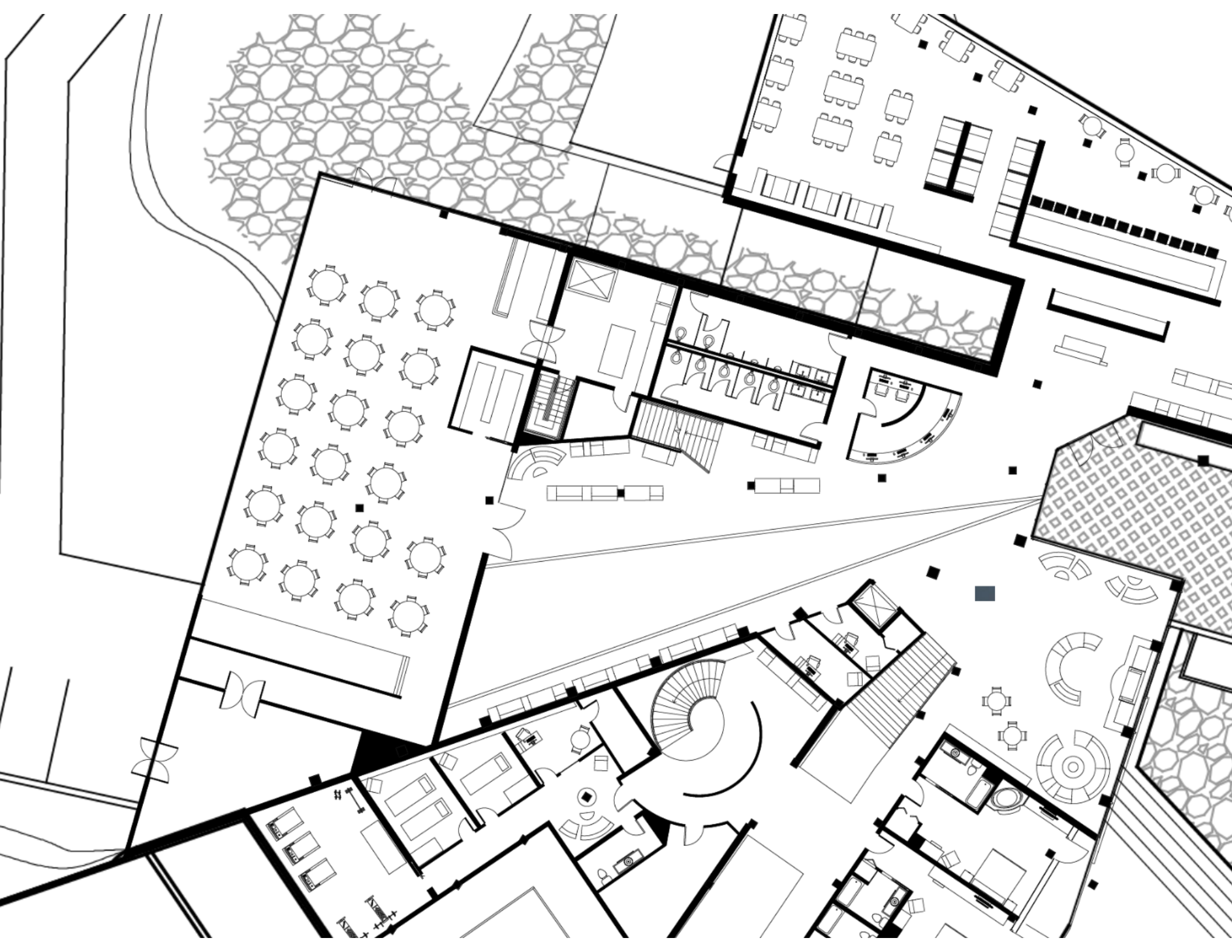












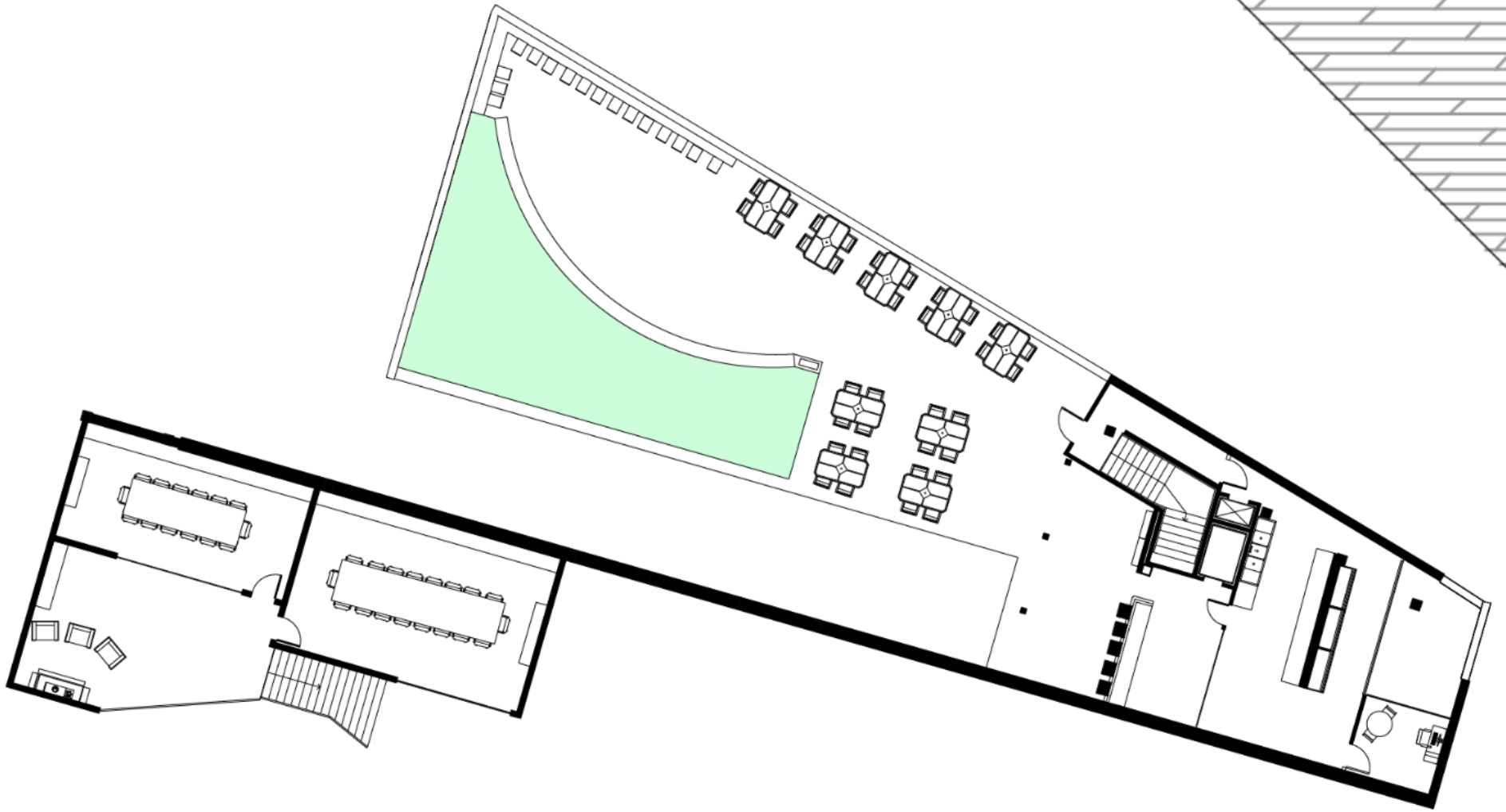




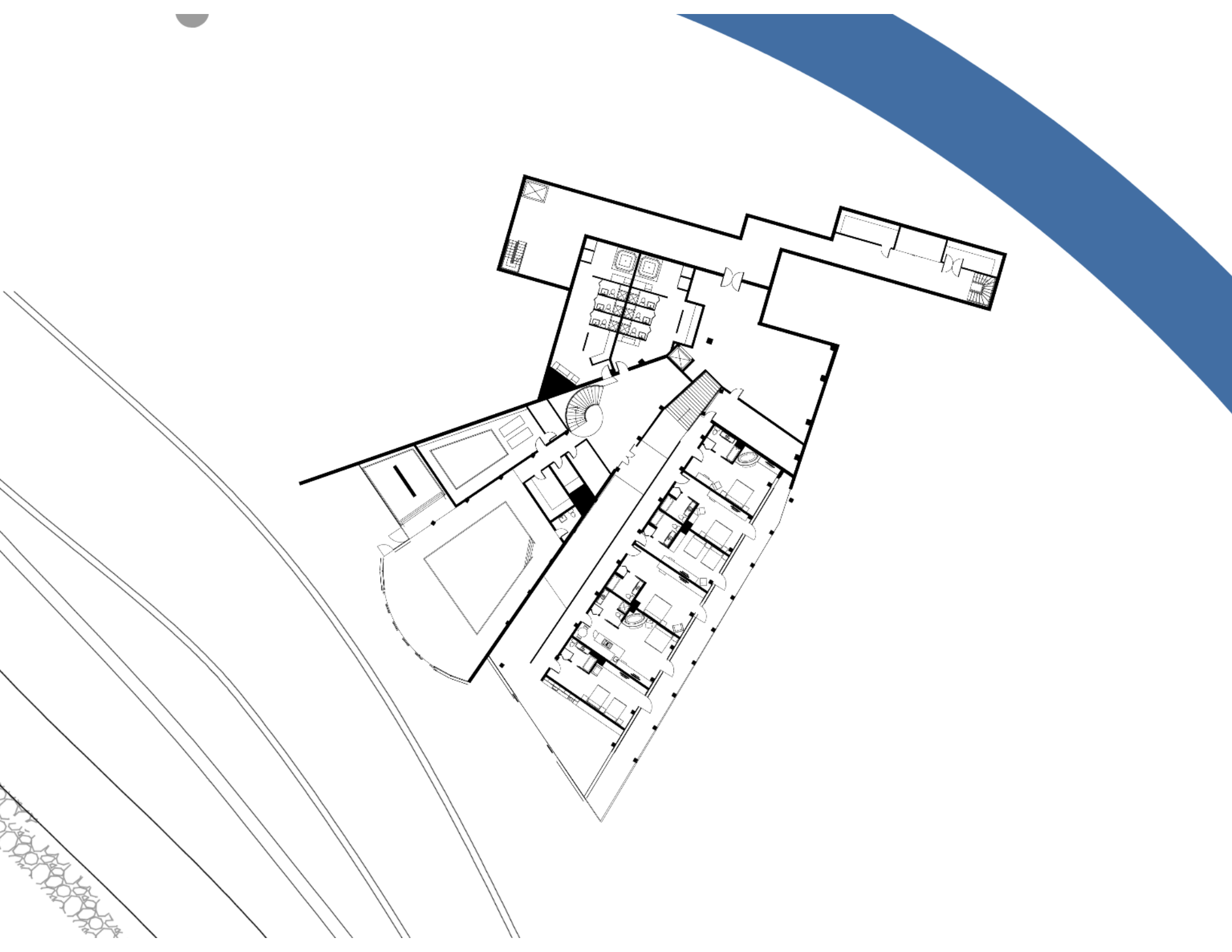


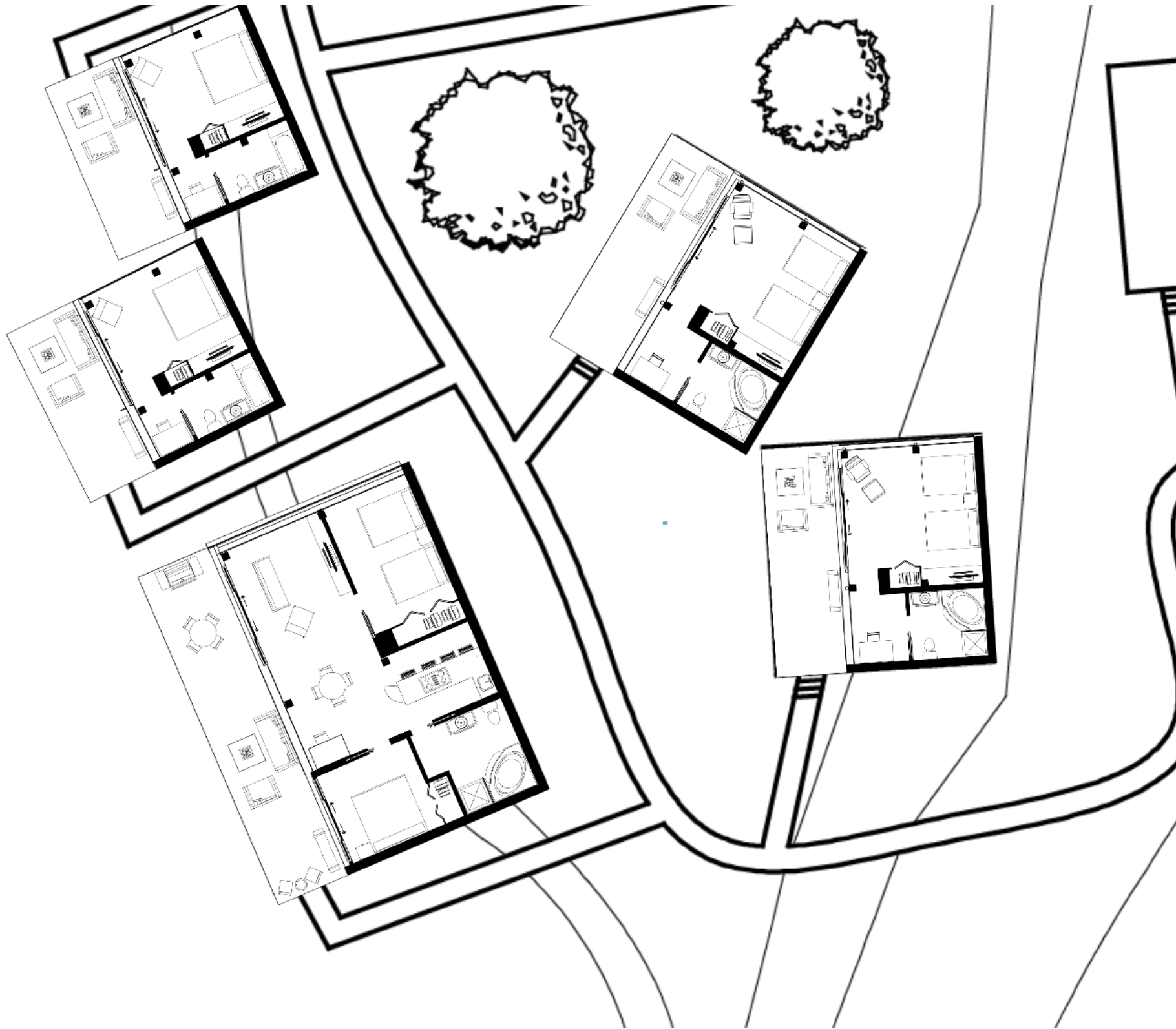








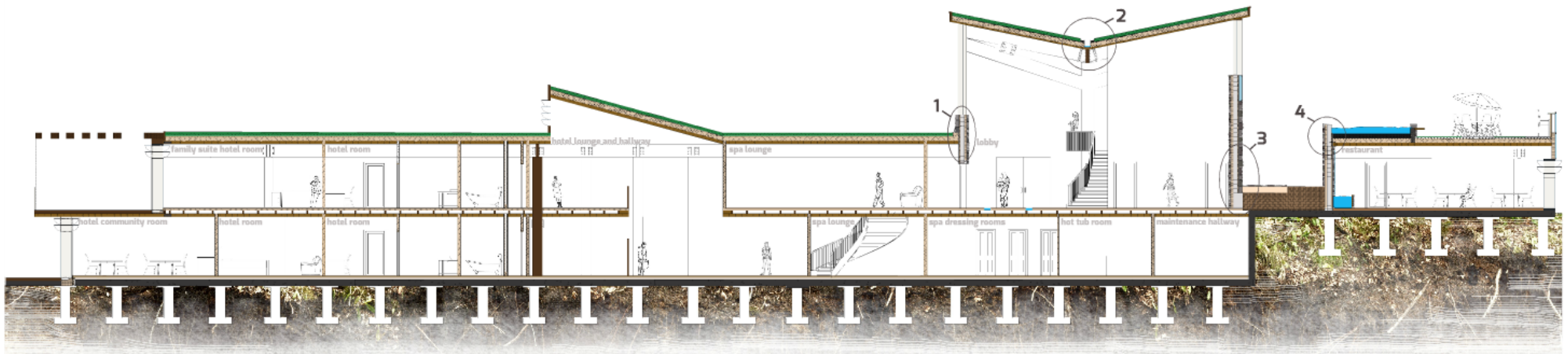
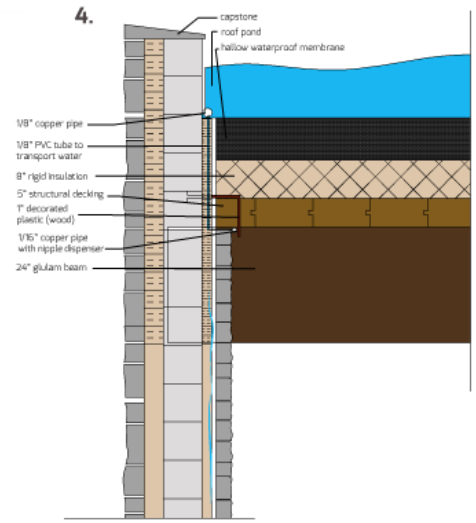
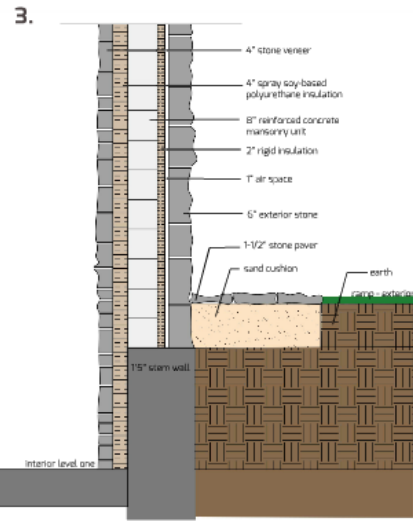
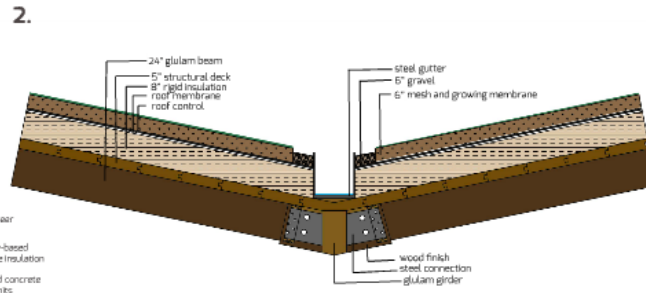
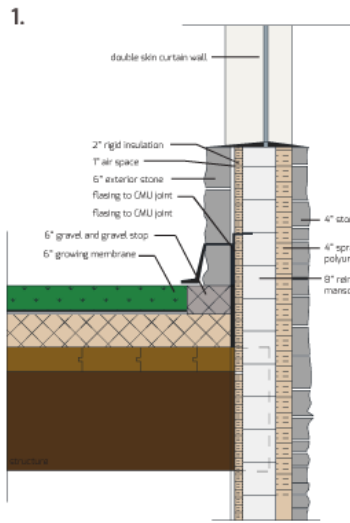




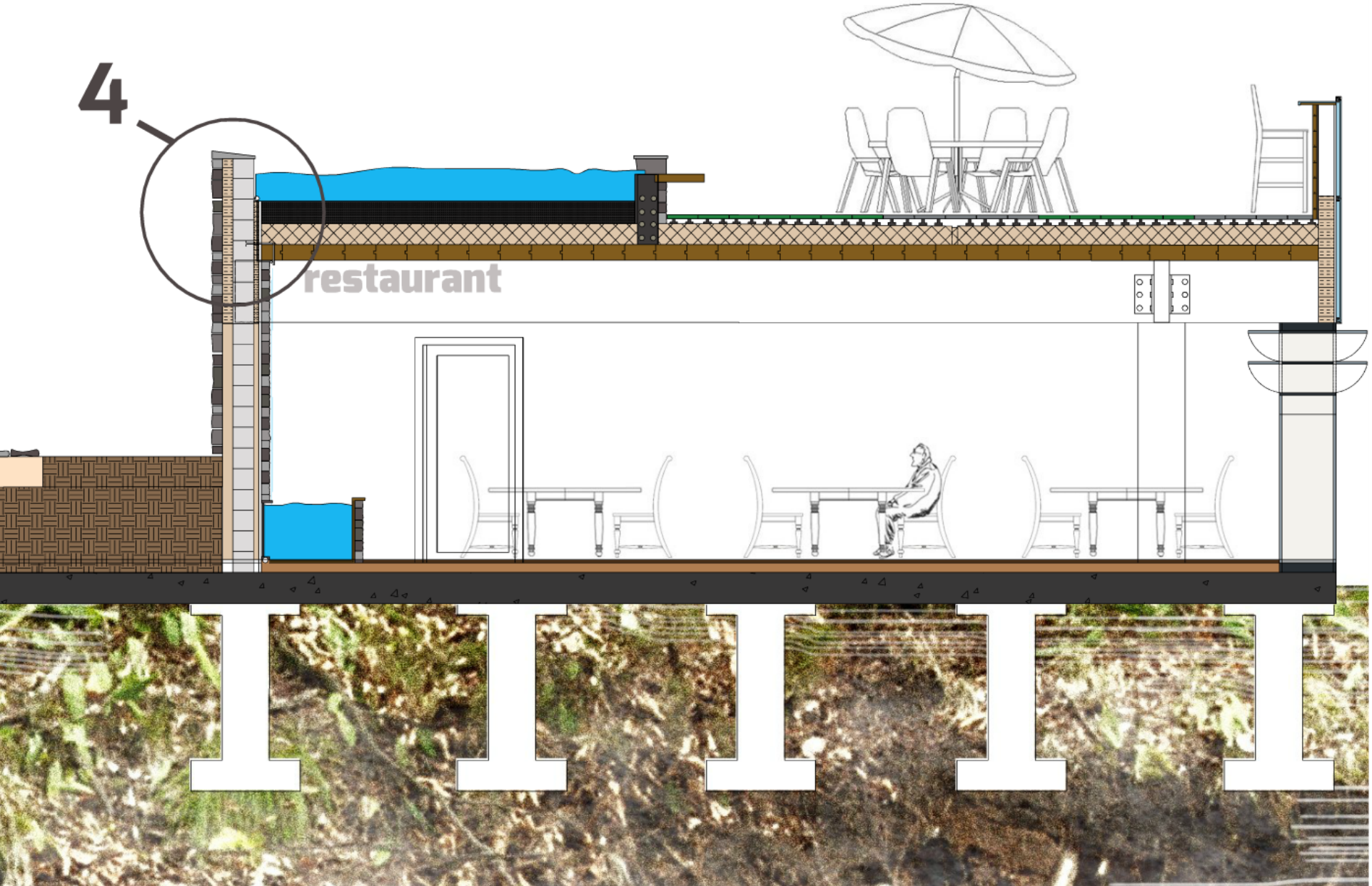


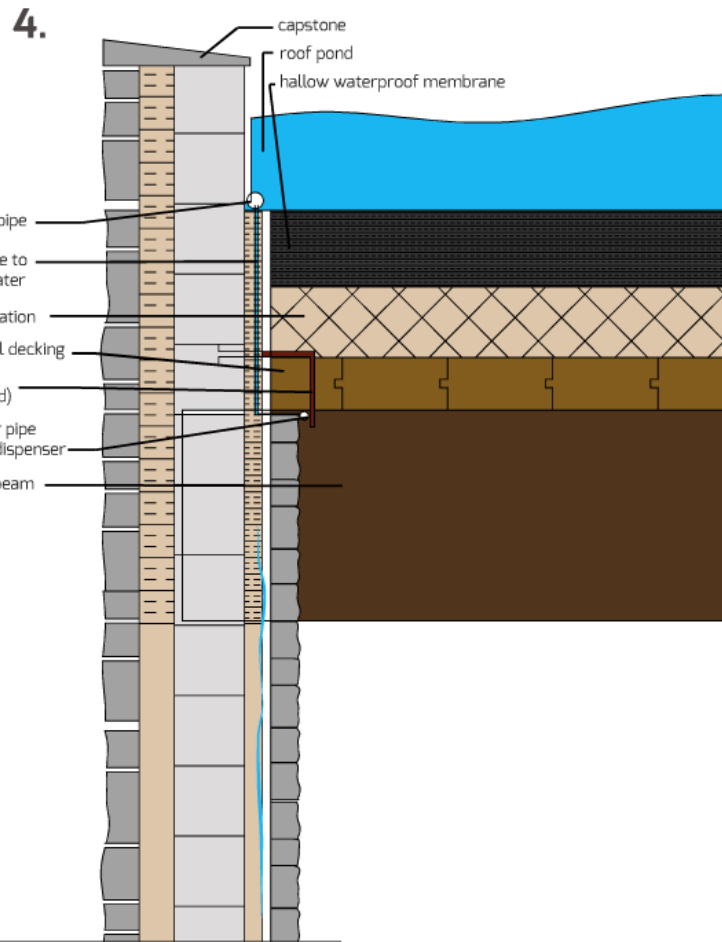
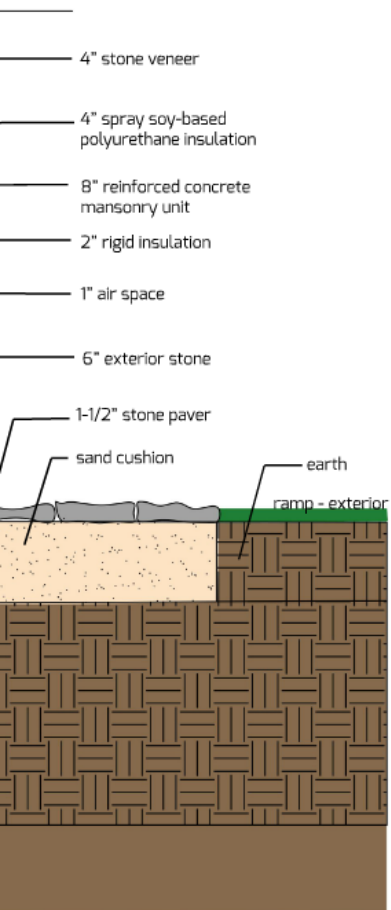




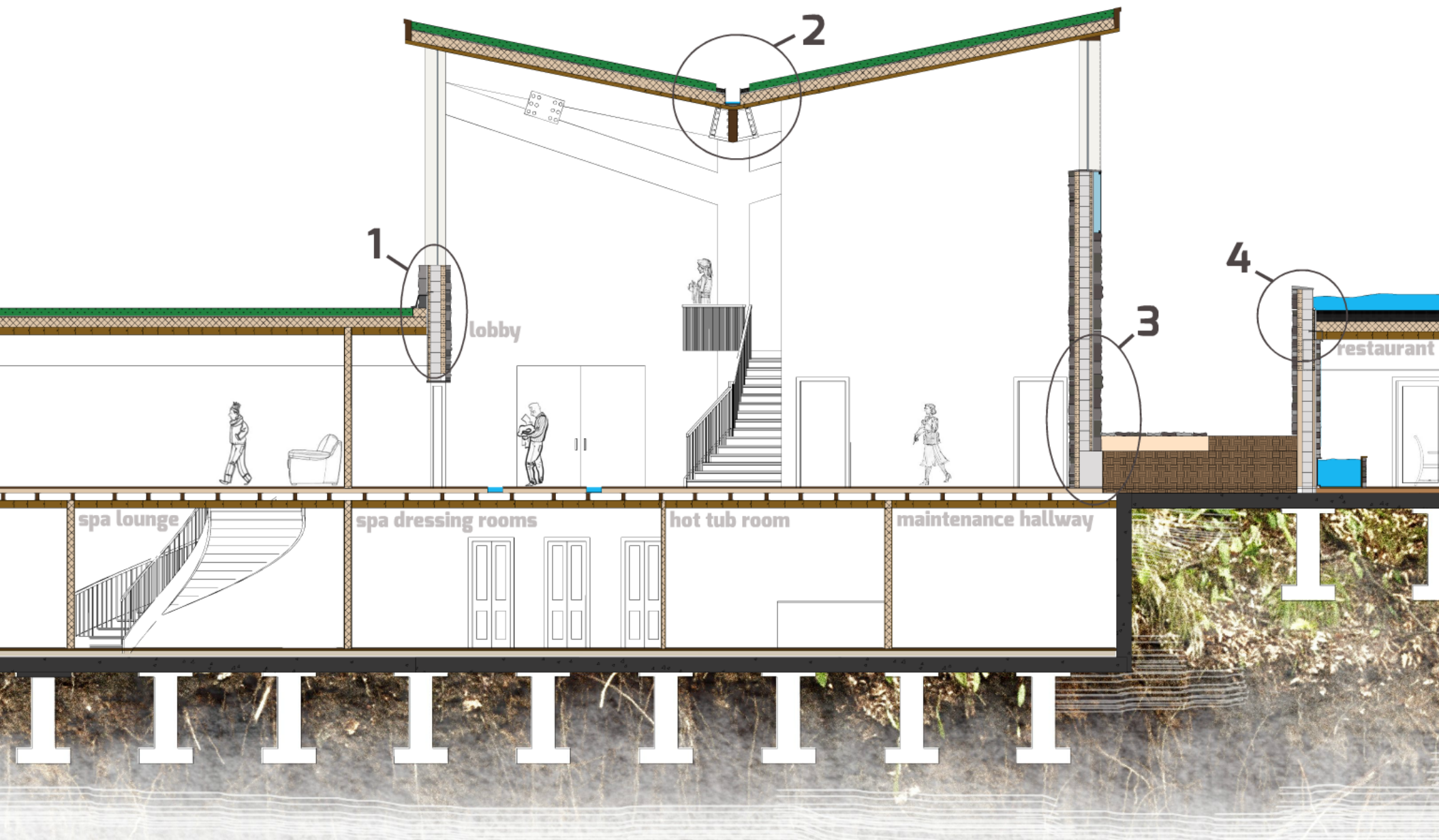


4

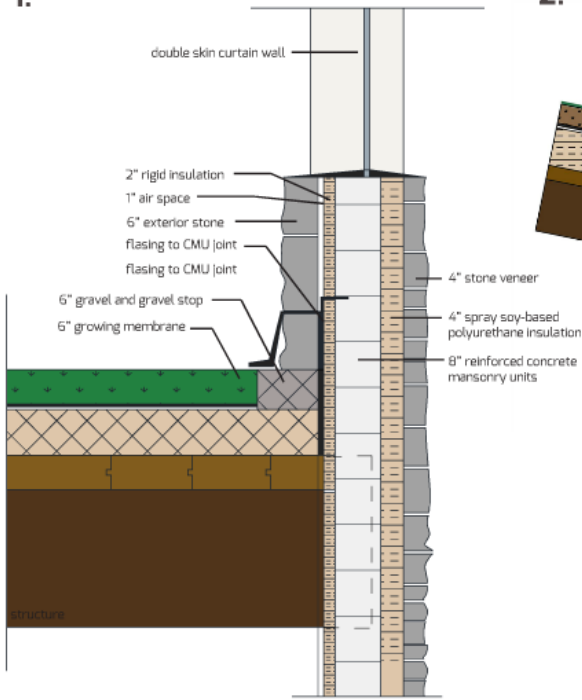




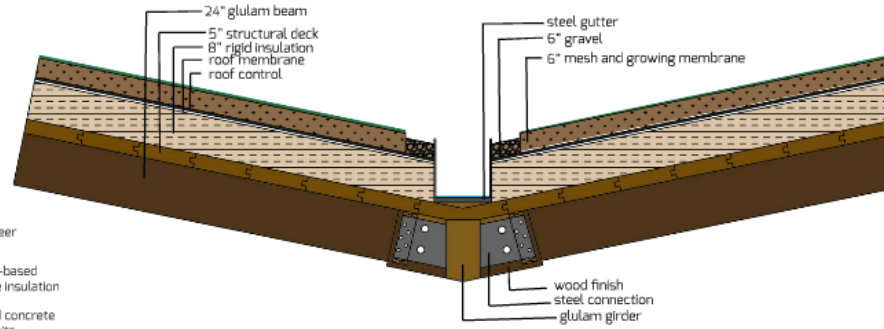




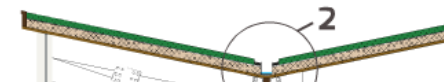
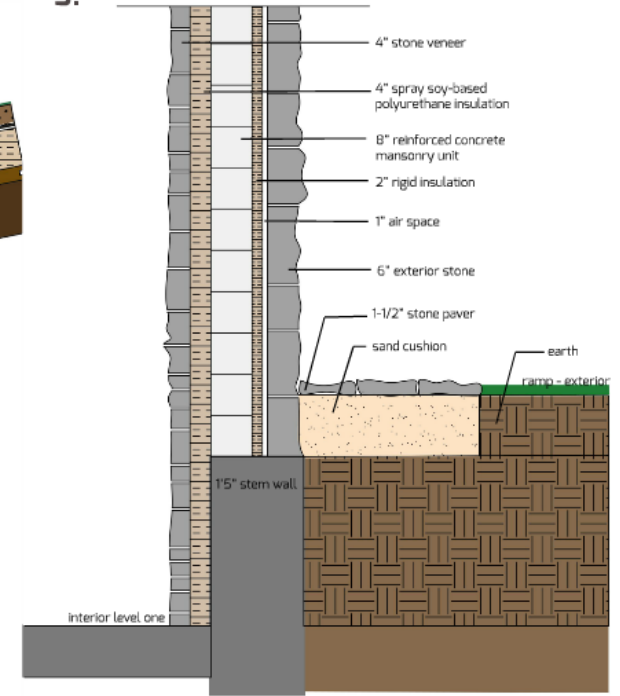
1.



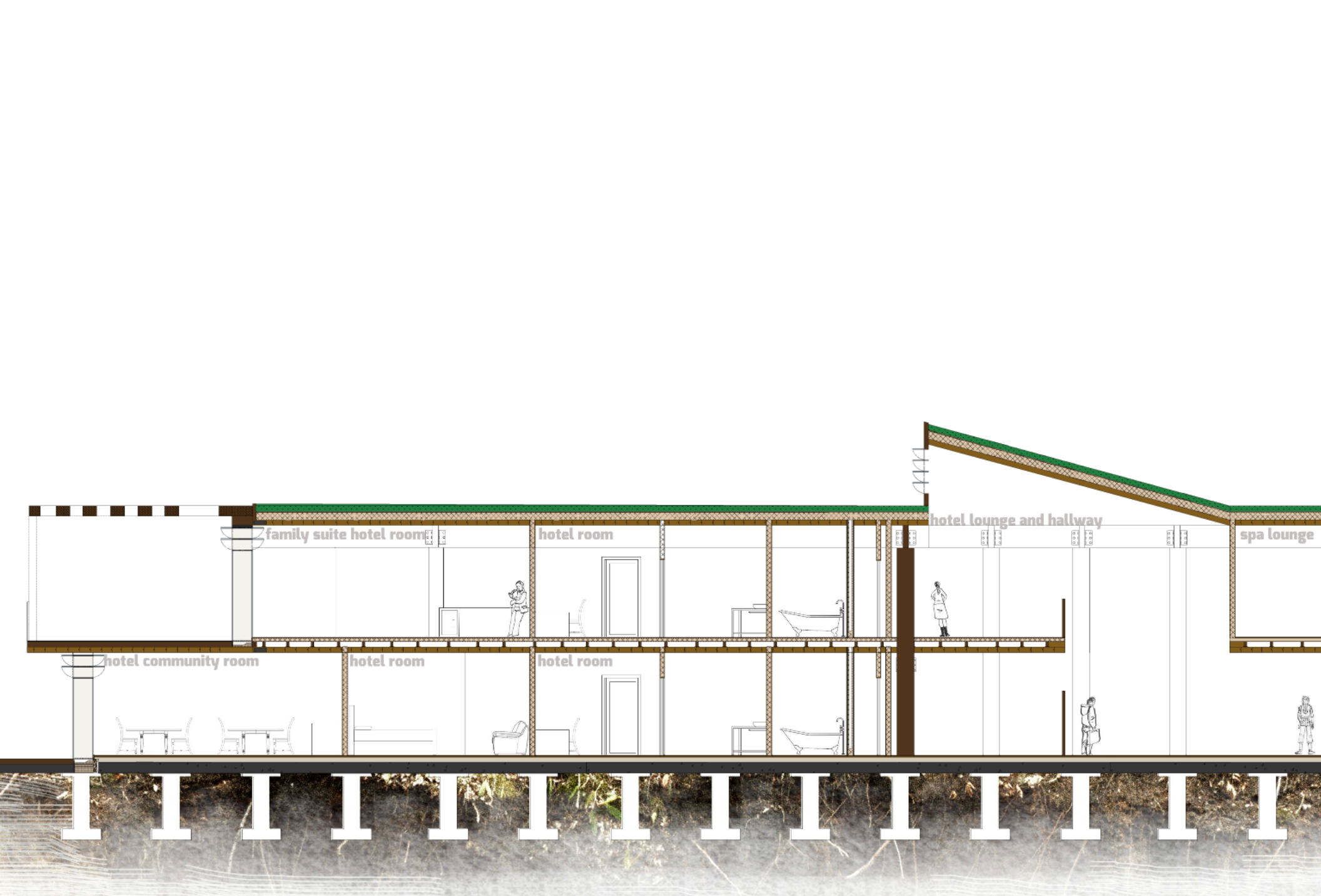
2.



3.







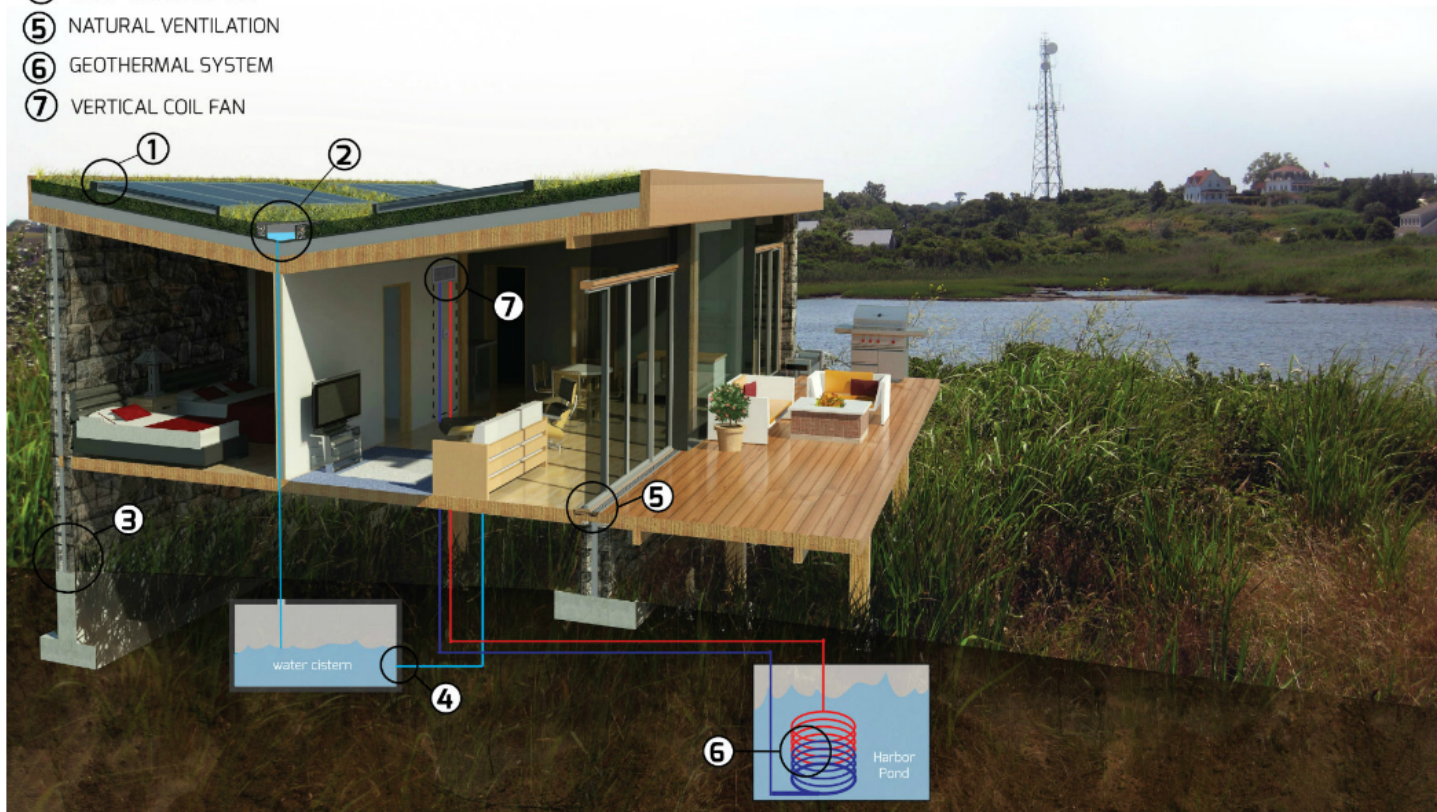






## SUSTAINABLE SYSTEMS, CABIN

- ① SOLAR POWER
- ② RAIN WATER COLLECTION
- ③ MINIMAL FOOTPRINT
- ④ GRAY WATER RE-USE
- ⑤ NATURAL VENTILATION
- ⑥ GEOTHERMAL SYSTEM
- ⑦ VERTICAL COIL FAN



# QUESTIONS?

