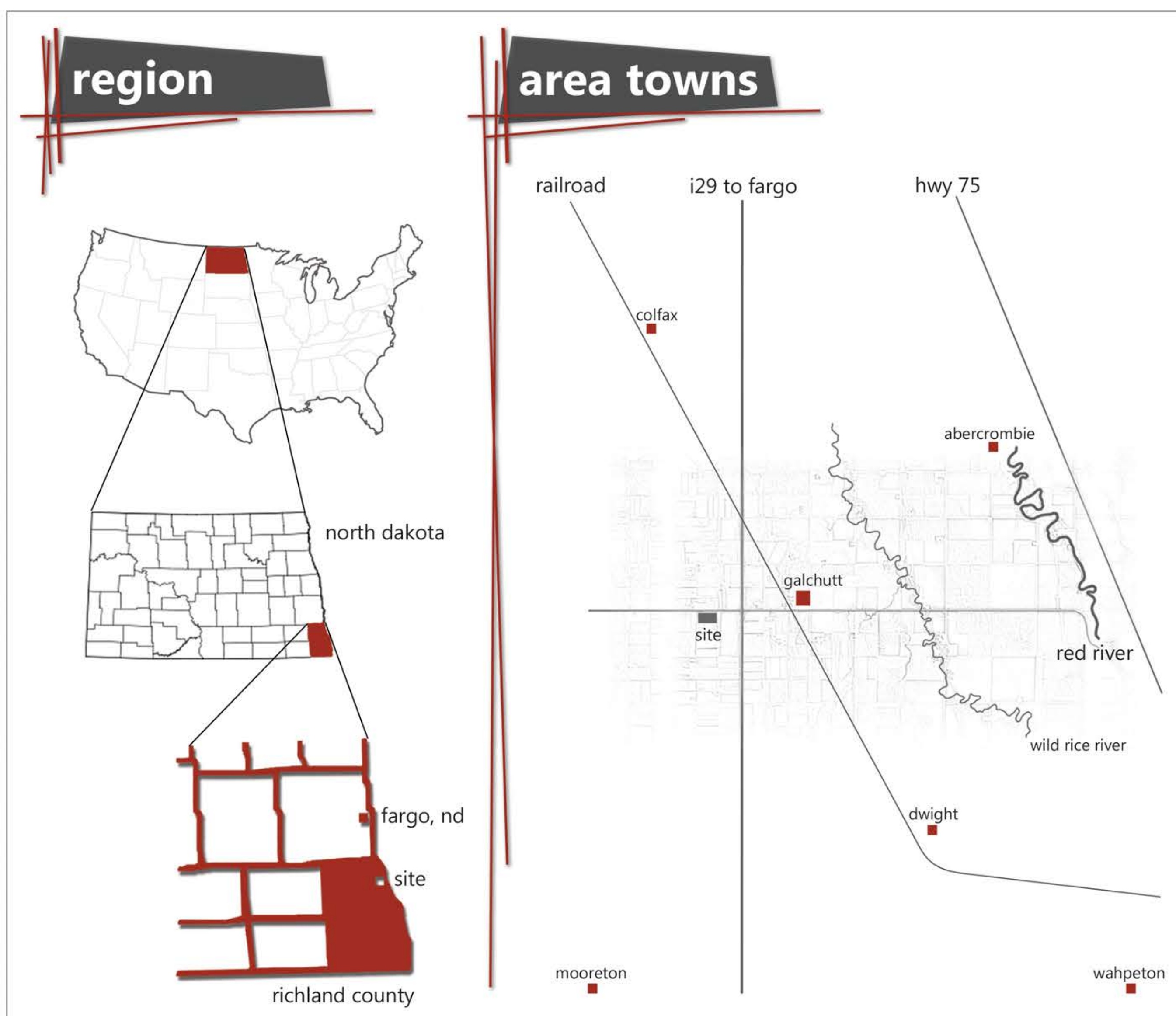


THE RURAL COMMONS

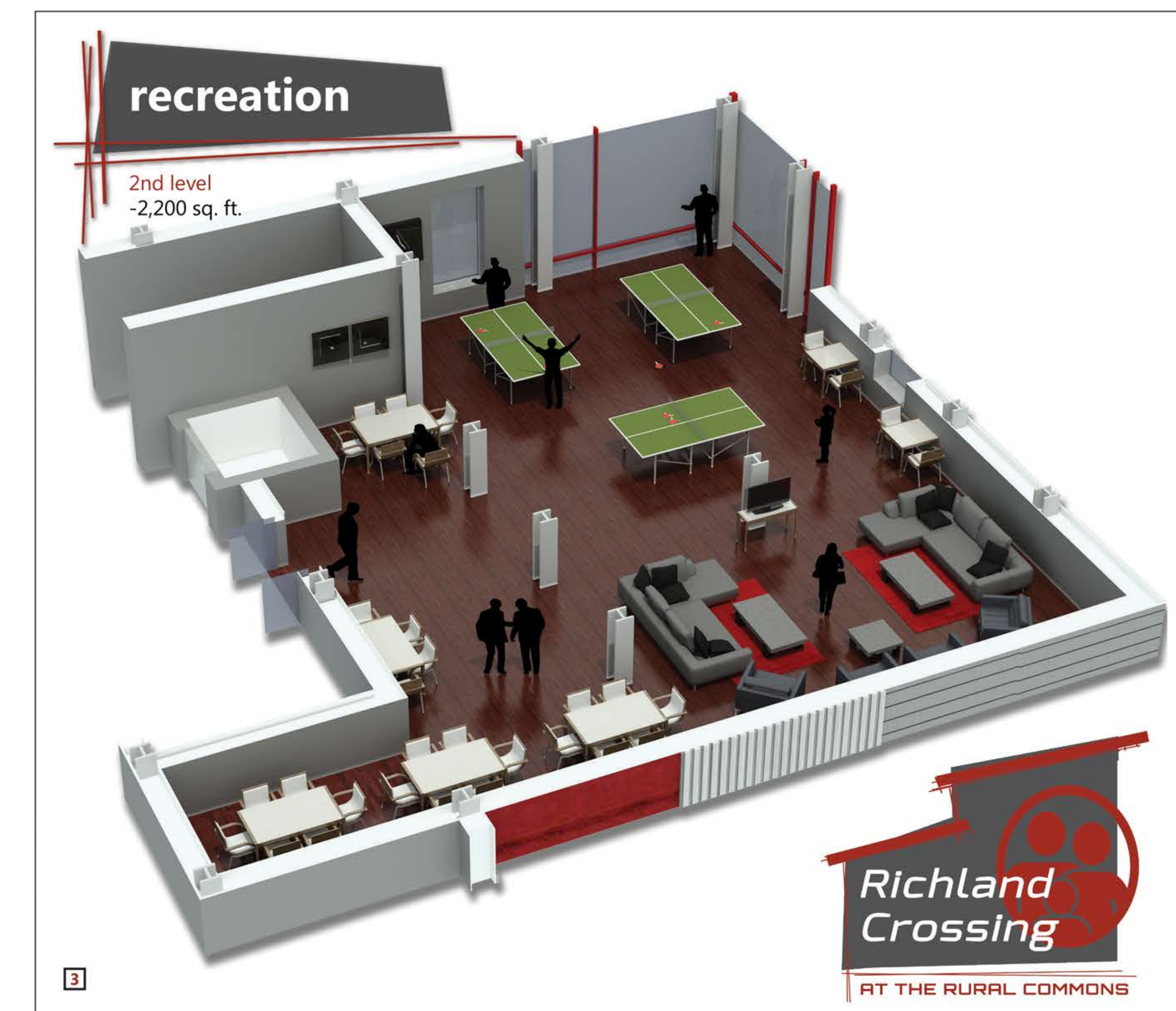
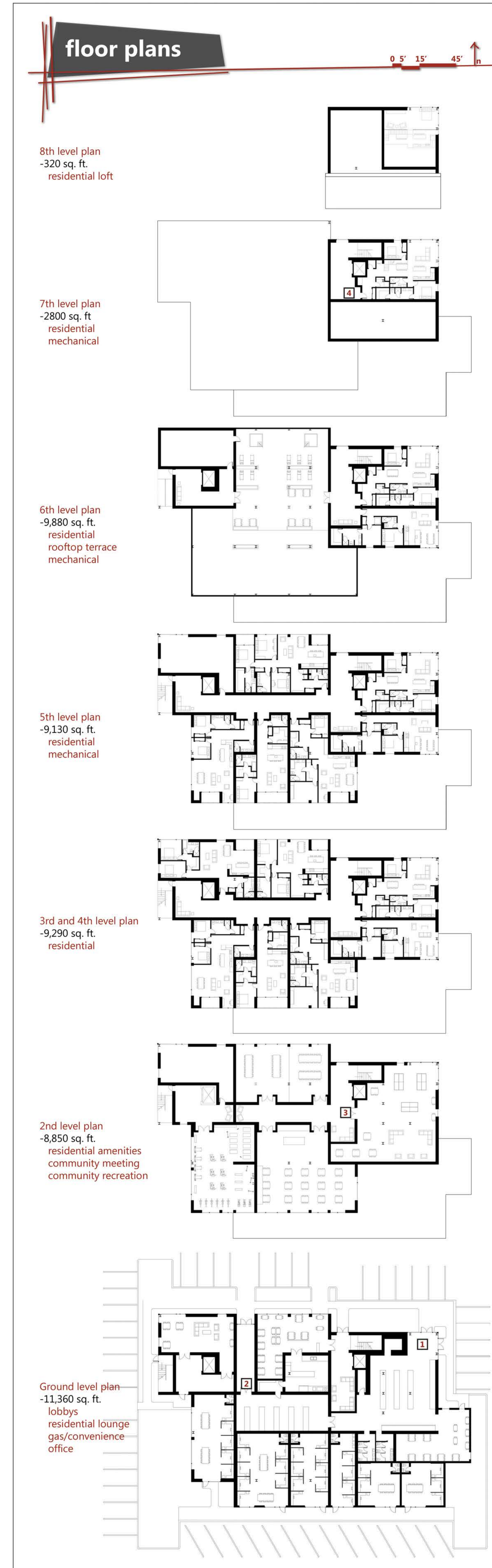
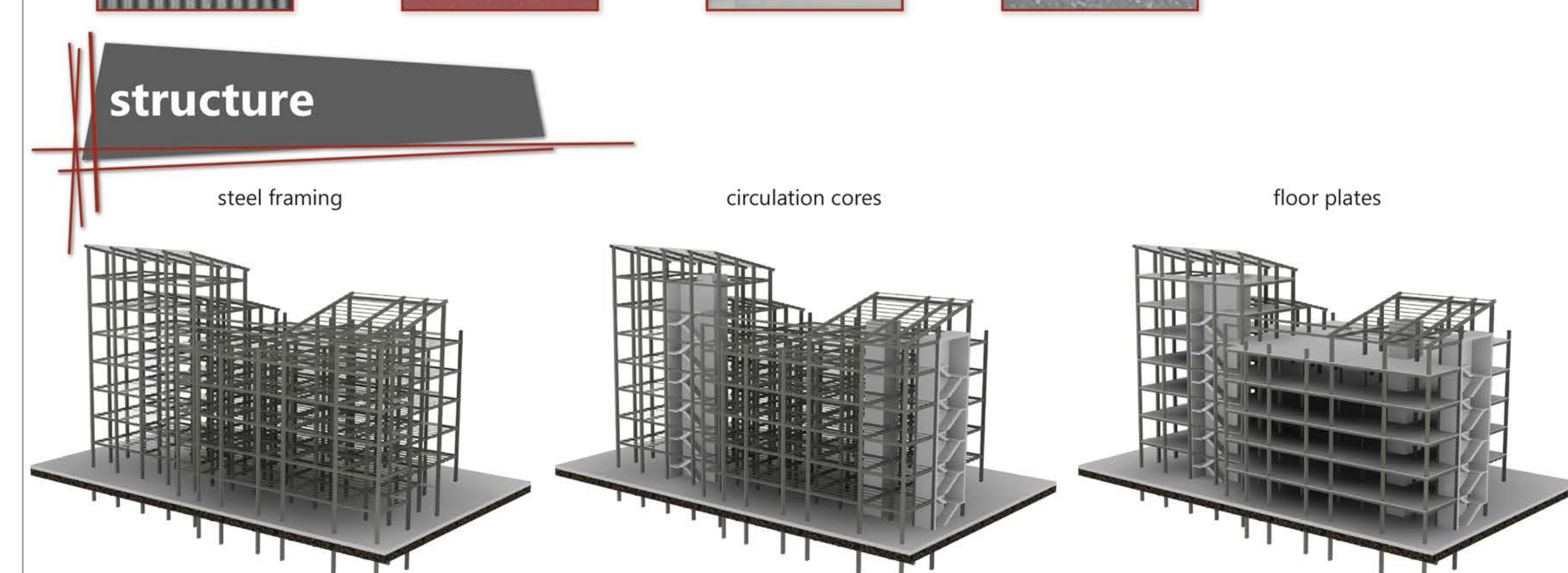
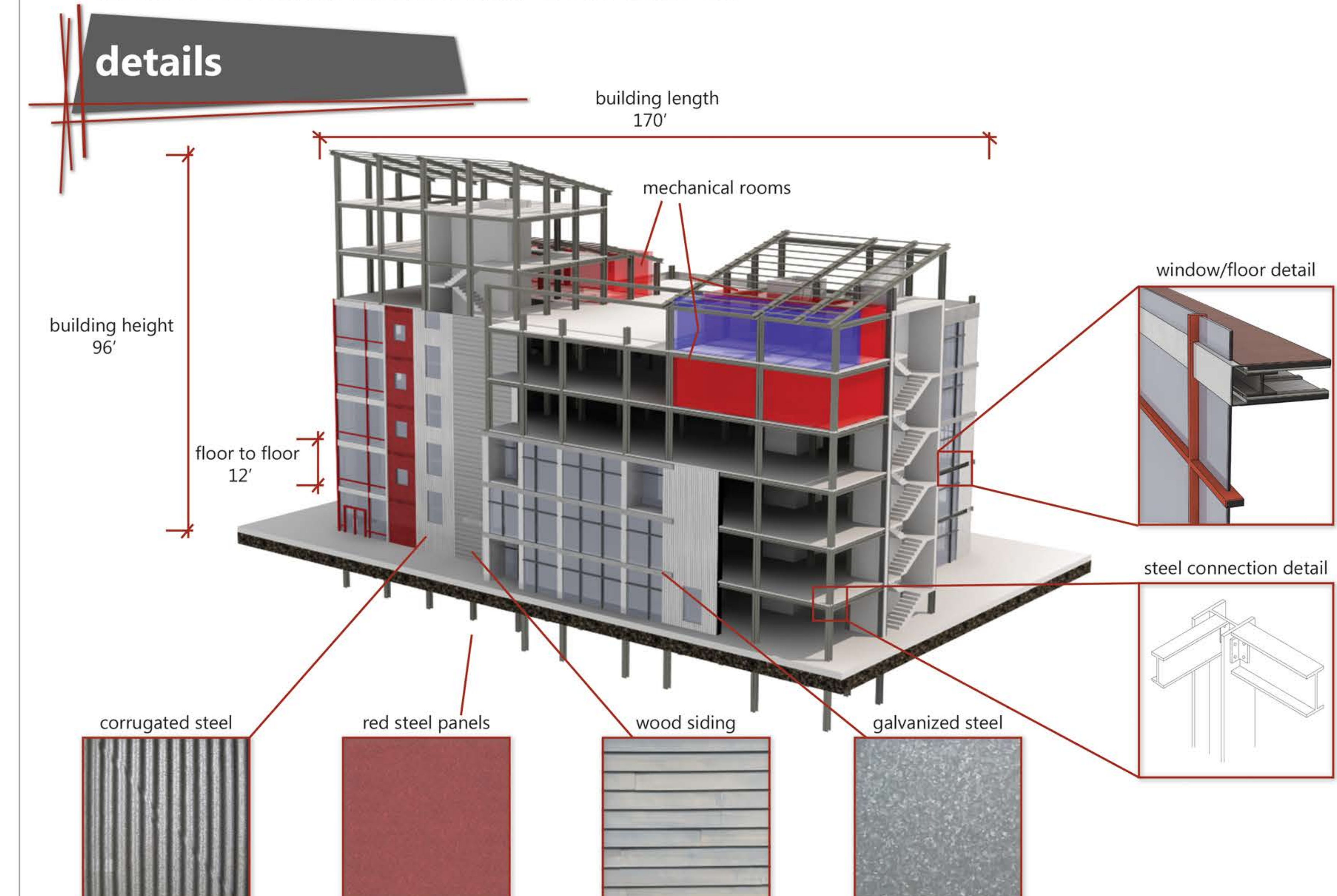


project description

The Rural Transitions Thesis is a mixed-use supplemental facility near Galchutt, ND. It was designed as a rural hub to supplement not only Galchutt, but surrounding communities as well that suffer from dwindling populations, and the lack of necessities and conveniences that make rural living possible. Rather than trying to revitalize struggling rural towns by building costly, and underutilized facilities in each town, The Rural Commons serves as a central point to fulfill the needs of multiple communities in one location.

Since the population base is not present in each of these communities to sustain their own building, bringing multiple populations to one rural facility is a more cost effective and efficient solution. The structure was designed to reflect the iconic elevator structure scattered across the agricultural plains. Economics in the area are primarily agriculture based which make the rural setting appealing. The close proximity to major traffic also make the structure a stopping destination for travelers.

As traffic and activity in rural areas is largely seasonal based on the agriculture season, incorporating housing into the facility gives the building a constant income so it can sustain itself when traffic is less dense. Richland Commons is a community center intended to bring the communities and rural dwellers together. The office space is flexible and would most likely be utilized by agriculture related business and medical services that would benefit from the central location. Other inclusions are The Forecast Cafe, and Acres Station, a gas station/convenience store.



site

The Rural Commons site is located south of Fargo, ND near Galchutt. It is conveniently located near Interstate 29 and is easily accessible by many "small" communities that would benefit from the mixed-use facility. The graphic above illustrates the greater site region. Main traffic arteries are labeled as well as nearby rivers, and a lightly used railroad. The community primarily being served, Galchutt, is denoted as well as supplemental communities.

The detailed site plan illustrates site access from the north and east. Parking is arranged for different functions. Residential to the west, community and cafe parking to the north, office parking to the south, and gas station/overflow parking to the east. Trees would border the site, and all the surrounding area remains tillable farmland. Vegetation would also create seasonal buffers.

