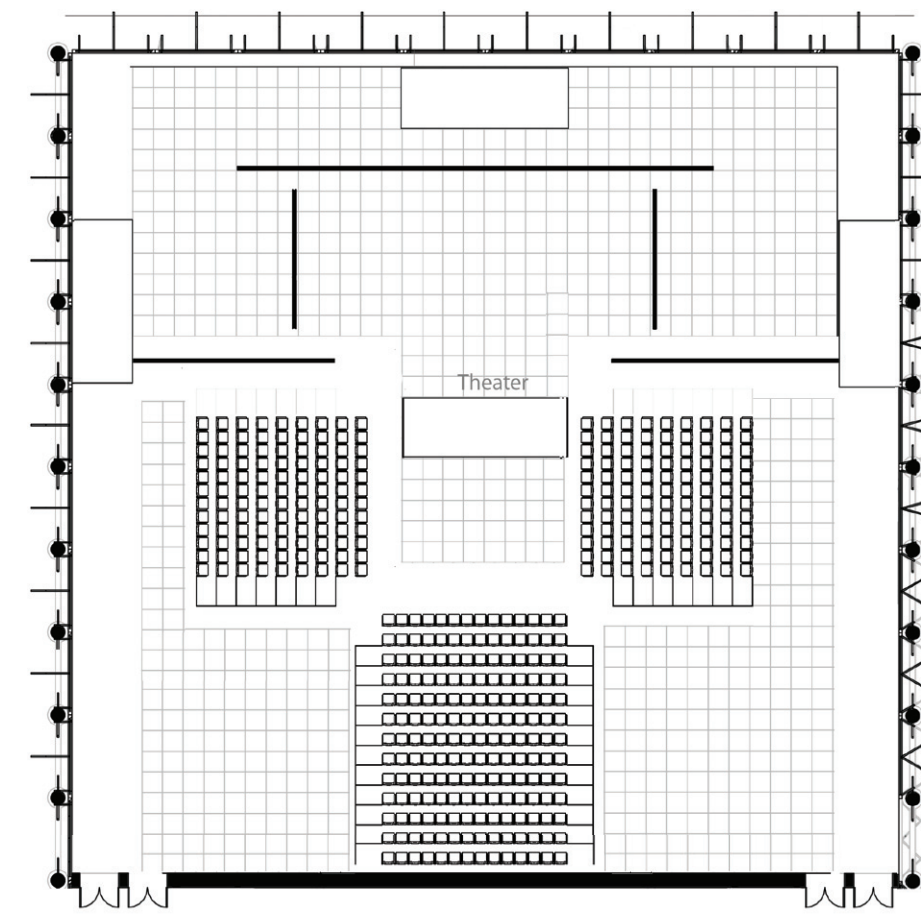
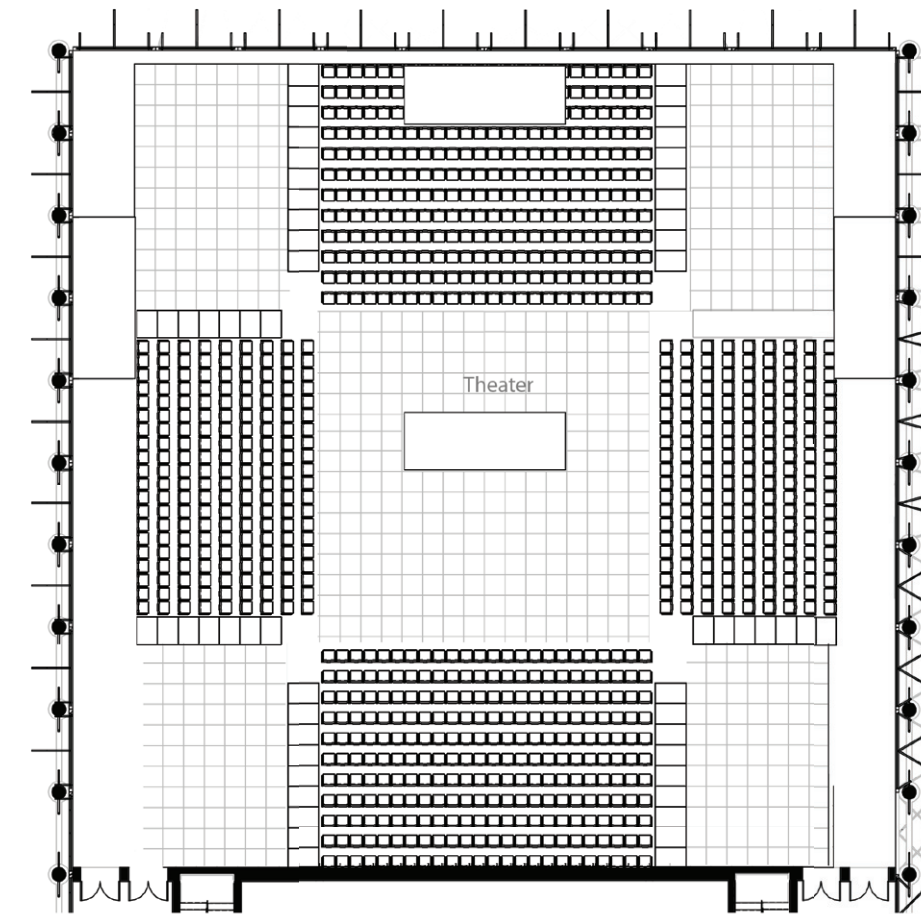


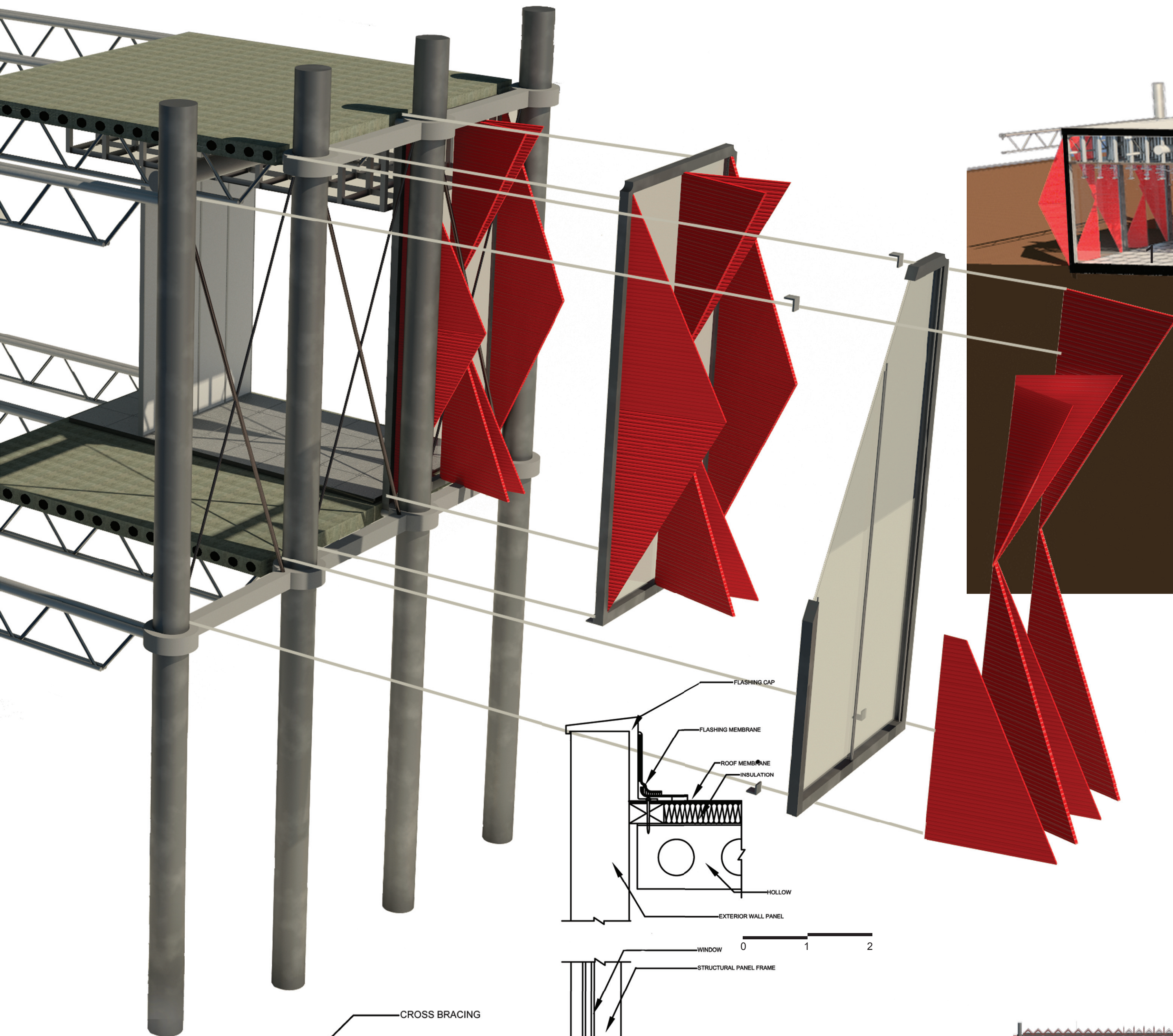
PROSCENIUM



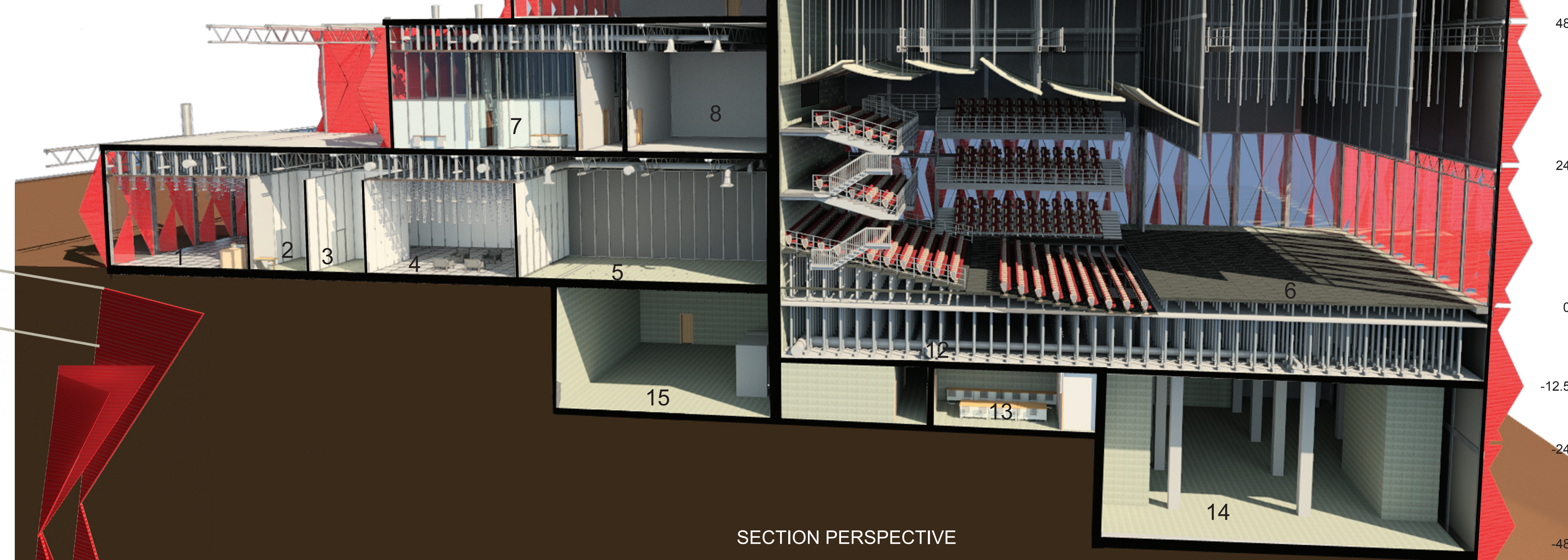
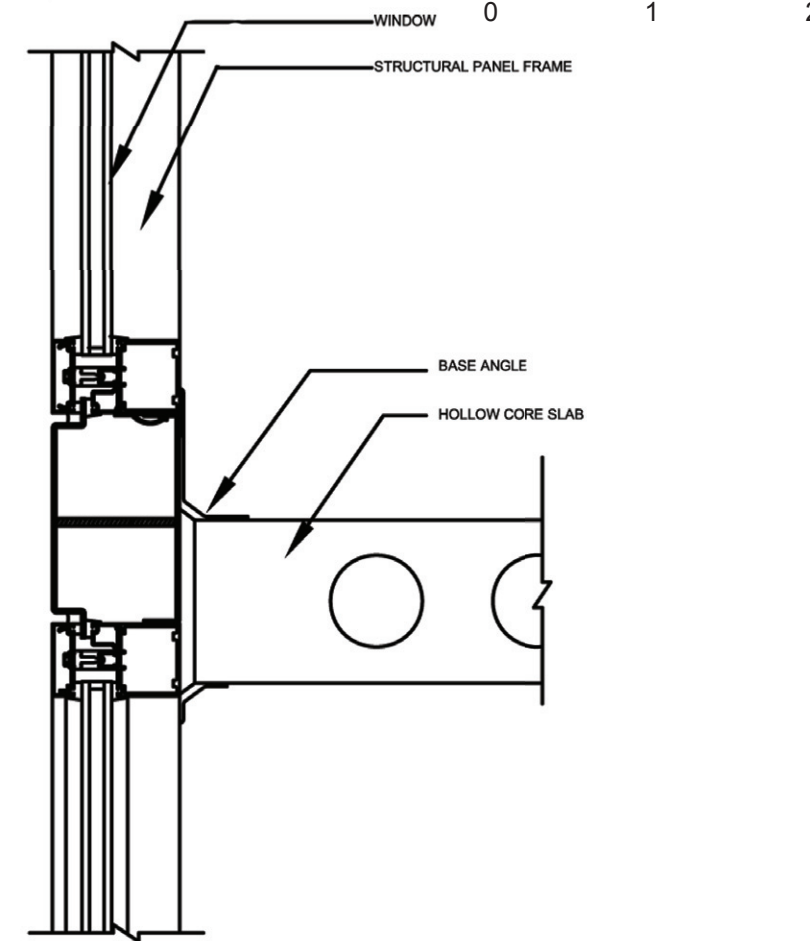
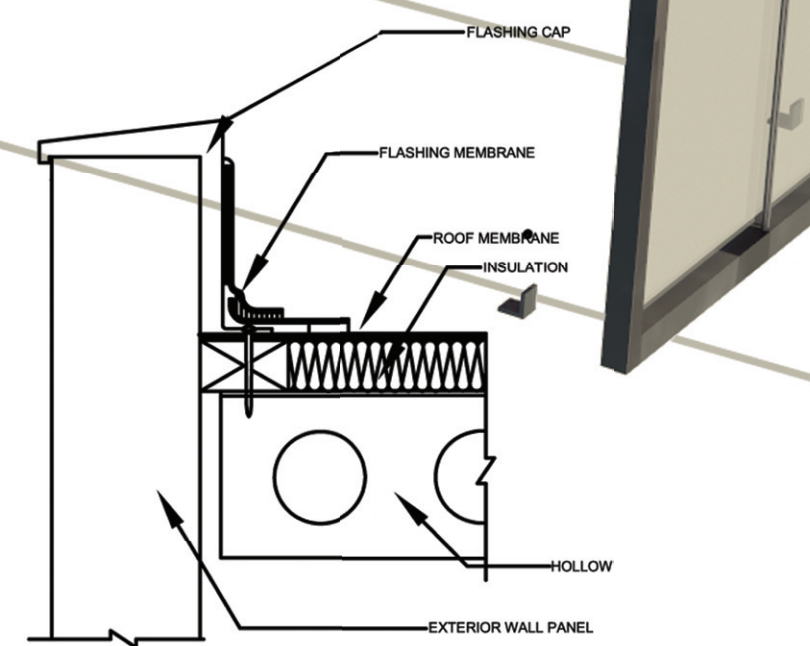
THRUST



ARENA



0 1 2



SECTION PERSPECTIVE

Elevation 96
72
48
24
0
-12.5
-24
-48

- 1 LOBBY
- 2 TICKET COUNTER
- 3 COAT ROOM
- 4 LOUNGE
- 5 REHEARSAL ROOMS
- 6 AUDITORIUM
- 7 OFFICES
- 8 THEATRE TECHNOLOGY ROOM
- 9 GALLERY
- 10 RESTAURANT
- 11 GREENHOUSE GARDEN
- 12 LIFTS
- 13 CHANGING ROOM
- 14 SET STORAGE
- 15 MECHANICAL ROOM

The building utilizes long spanning trusses to free up space. The interior uses removable wall partitions to provide flexibility. The finish materials are detachable in order to be changed out or access the systems underneath. Electrical systems underneath removable floor finishes provides electric and telecommunications needs where ever needed.

The theatre is fitted with adjustable stage and seating using stage lifts. The seats are detachable to create a variety of arrangements and to provide handicap accessible spaces. The space for the lifts provides room for the ventilation below stage and does not effect the adjustable equipment.

The acoustic panels lower in order to modify the acoustic of the auditorium and shorten the height of the room for smaller intimate performances.

The louvre system doubles as a way of blacking out the theatre or opening up to a view of the harbor in the background.

