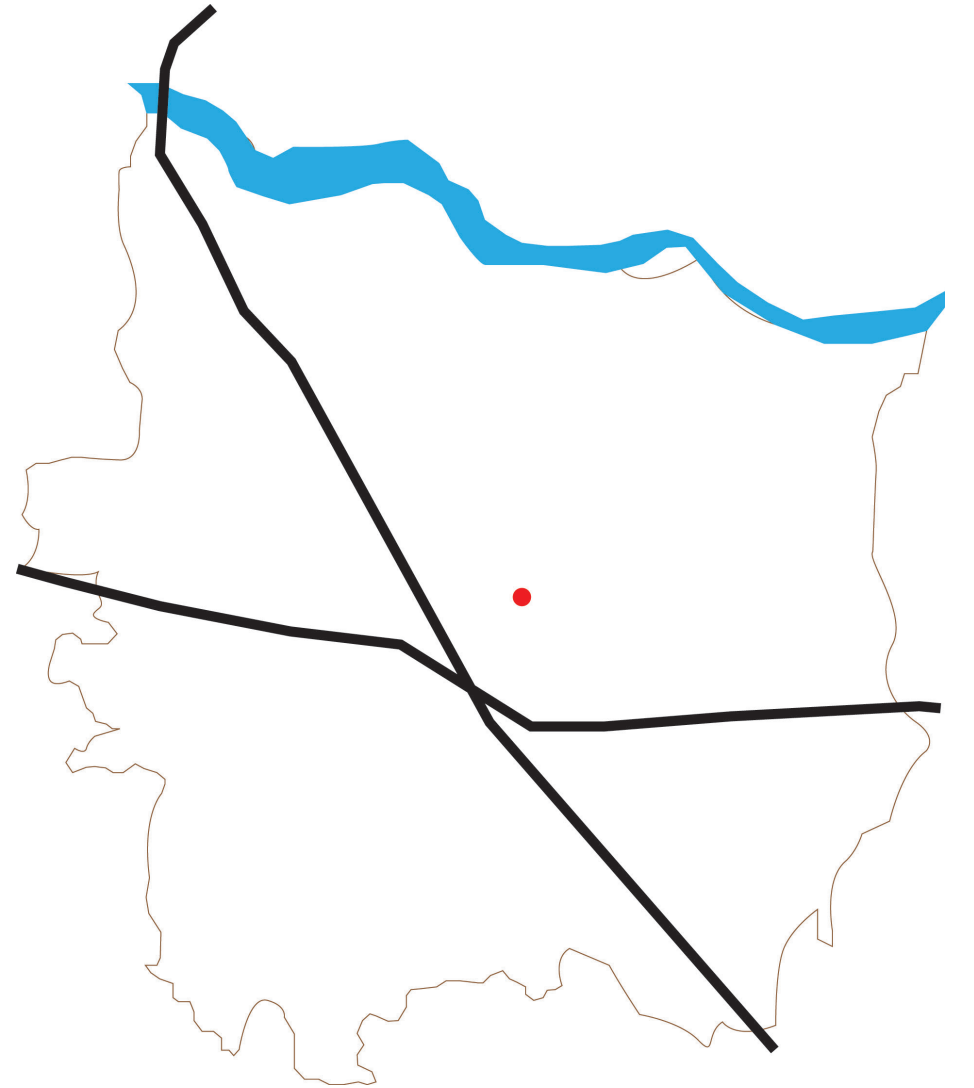


# 老人之家 BUILDING SENSES:

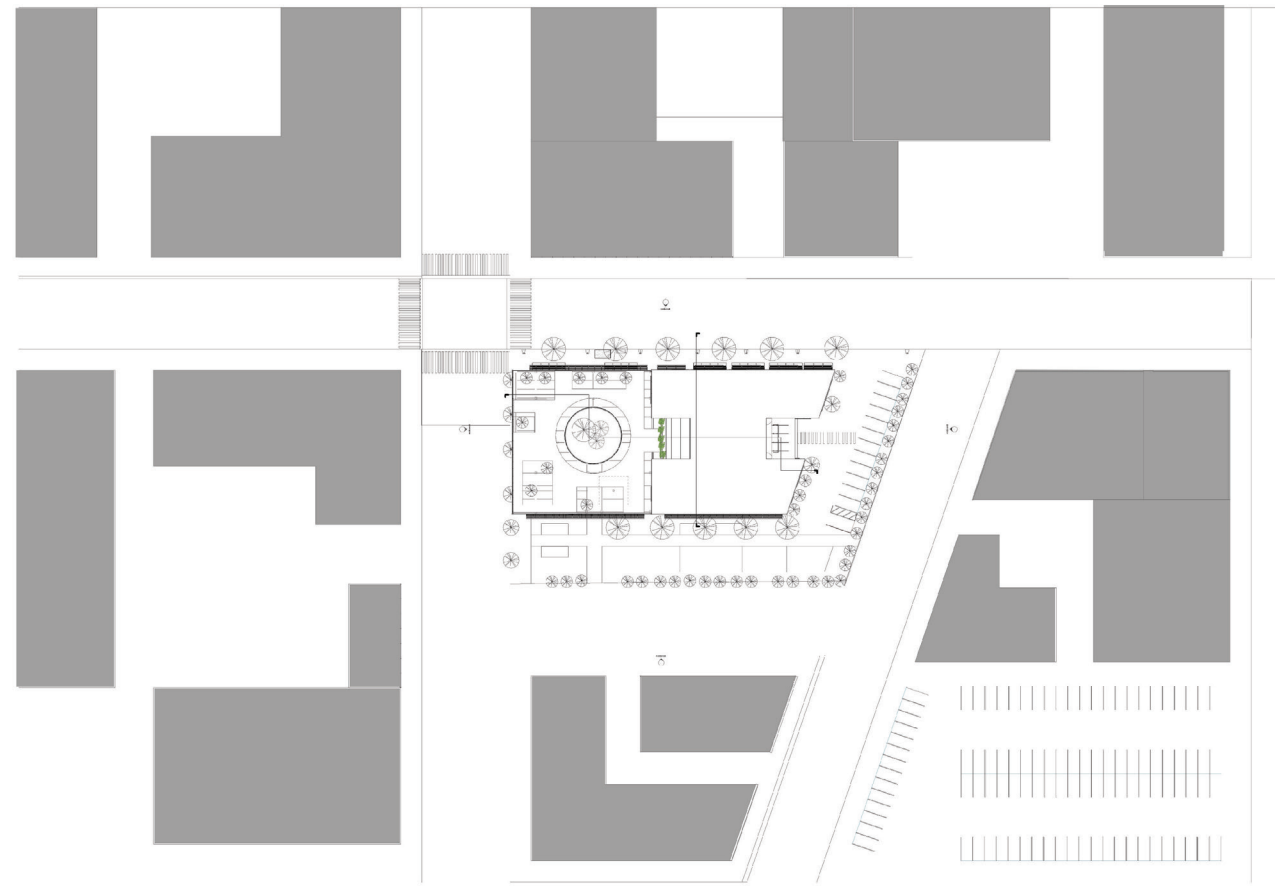
## A FRESH LOOK AT A MEANINGFUL RETIREMENT COMMUNITY FOR THE PEOPLE OF ZHENGZHOU, CHINA



CHINA



ZHENGZHOU



SITE PLAN  
1:1600

THIS THESIS WILL RETHINK ELDERLY CARE IN ACCORDANCE TO, DESIGNING A BUILDING THAT RESPONDS TO THE PHYSICAL AND PSYCHOLOGICAL NEEDS OF THE ELDERLY POPULATION IN THE URBAN SETTING. THE ARCHITECTURE WILL ANALYZE HUMAN BEHAVIOR IN ORDER TO CREATE A SENSE OF PLACE.

THE TYPOLOGY OF THE BUILDING IS A RETIREMENT COMMUNITY, LOCATED IN ZHENGZHOU, CHINA.

### SENSE OF COMMUNITY

BEFORE THE ORIGINAL SITE'S DEMOLITION IN THE SUMMER OF 2012, THERE WAS A LOW INCOME COMMUNITY ON THE SITE. MOST BUILDINGS WERE COMPACT CONCRETE BOXES WITH TWO TO FOUR FLOORS. THE LOW RISE COMMUNITY CREATES AN OPPORTUNITY FOR PEOPLE INTERACT WITH THE STREET LEVEL PROMOTING SOCIALIZATION. IN KEEPING THE SENSE OF COMMUNITY, EVERY 3 FLOORS ARE GROUPED TO CREATE A COMMUNITY THAT SHARES OUTDOOR SPACES AND A COMMUNAL ACTIVITY ROOM.

### SENSE OF BELONGING AND ENJOYMENT

THE PROPOSED BUILDING IS MIXED USE ARCHITECTURE. AN ELDERLY CENTER IS DESIGNED WITHIN THE FIRST TWO FLOORS TO LET PEOPLE JOIN EACH OTHER FOR ACTIVITIES.

### SENSE OF SECURITY AND ASSISTANCE

IN ORDER TO CREATE A SENSE OF SECURITY, THE BUILDING IS DIVIDED INTO PRIVATE SPACES, SEMI PUBLIC SPACES AND PUBLIC SPACES TO SEPARATE PEOPLE. SAFETY DESIGN METHODS ARE USED IN DESIGNING THE LIVING UNITS TO CREATE A SAFE LIVING ENVIRONMENT (DETAILS SHOW IN "APARTMENT PERSPECTIVE"). THE HVAC FILTRATION SYSTEM ALLOWS ONE TO ESCAPE FROM THE POLLUTED ENVIRONMENT WHILE STILL UTILIZING NATURAL VENTILATION SYSTEMS.

### DESIGN FOR HUMAN

THE GOAL OF THE DESIGN IS TO IMPROVE ELDERLY LIFE QUALITY. HUMAN IS THE KEY IN THE DESIGN. THEREFORE, THE SPACES, ESPECIALLY THE LIVING UNITS, ARE DESIGNED SPECIFICALLY WITH ELDERLY NEED AND HUMAN SCALE IN MIND.