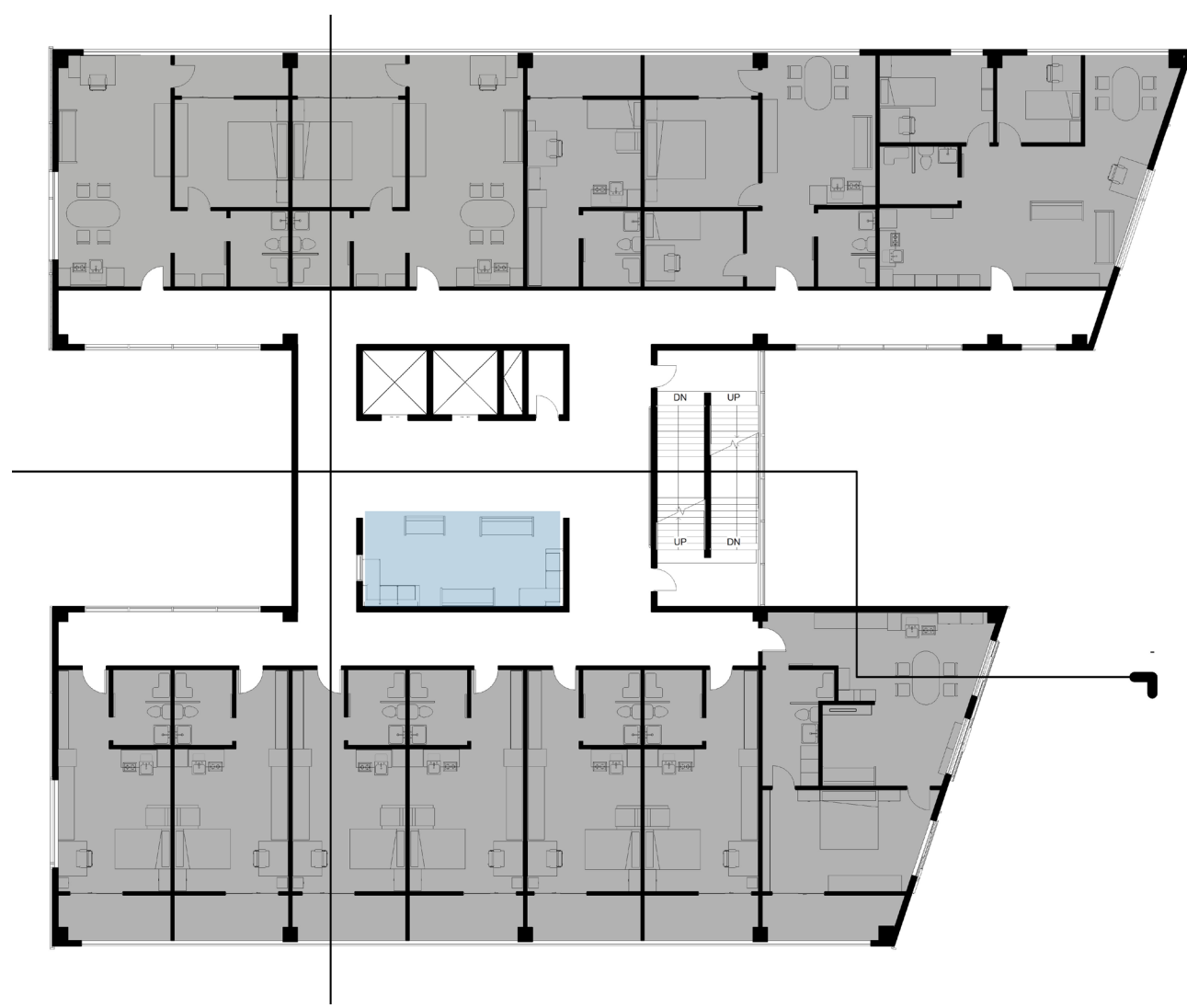
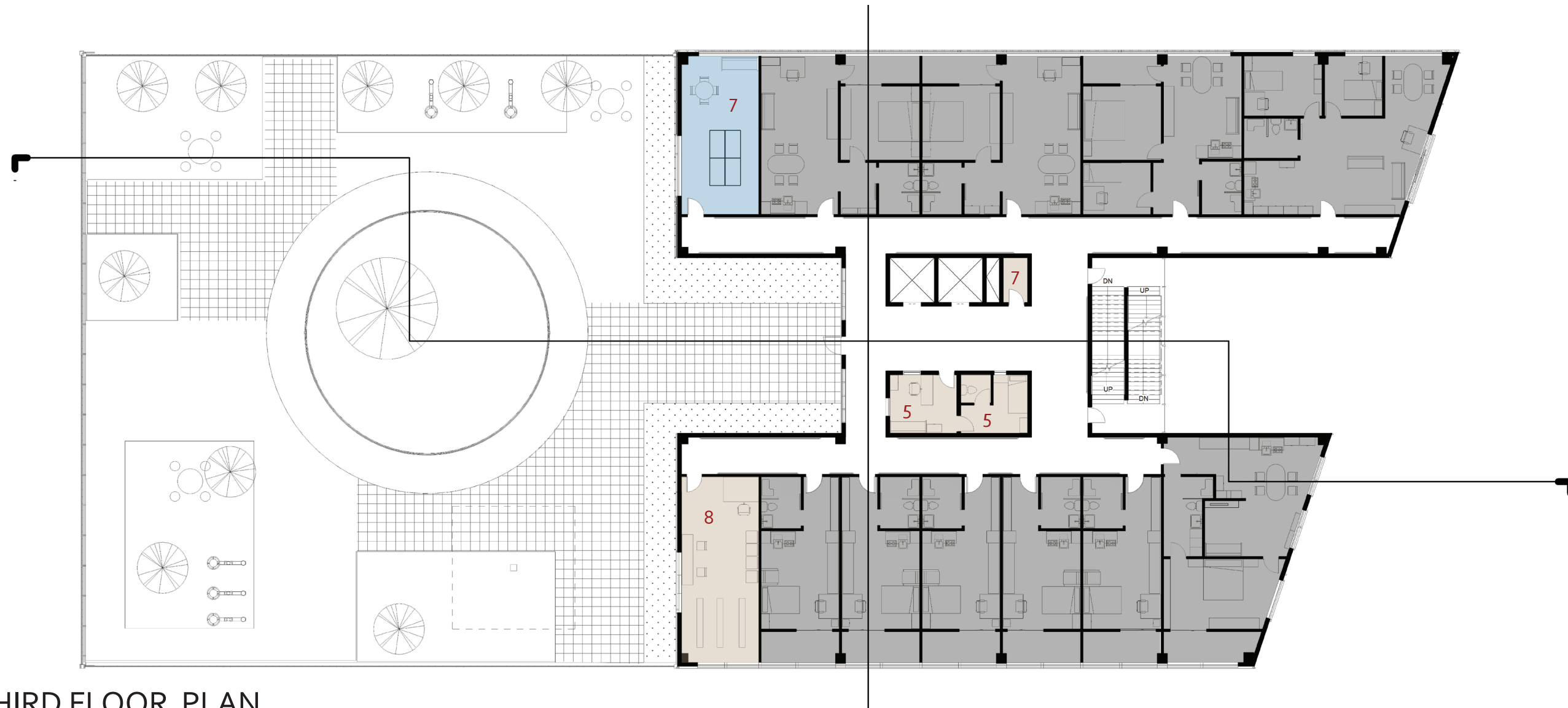


FOURTH FLOOR PLAN  
1:230



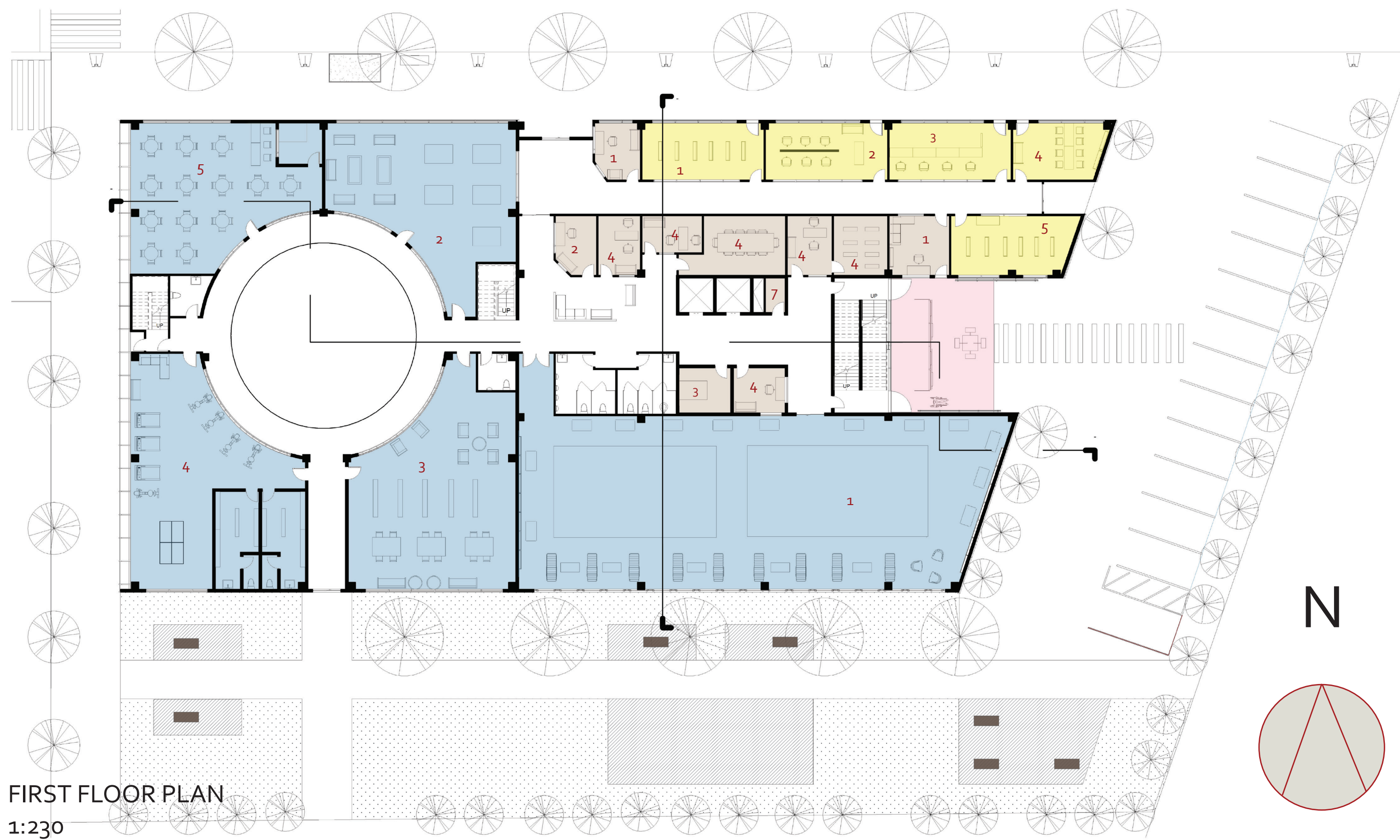
THIRD FLOOR PLAN  
1:230



SECOND FLOOR PLAN  
1:230



FIRST FLOOR PLAN  
1:230



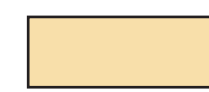
#### CAFETERIA

1. PUBLIC DINNING SPACE 340 Sq. M
2. PRIVATE DINNING SPACE 29 Sq. M
3. COOKING AND FOOD PREPARATION 200 Sq. M
4. BAR
5. STORAGE 14 Sq. M
6. LOCKER 10 Sq. M
7. OFFICE 15 Sq. M
8. STAFF BREAK -ROOM 8.8 Sq. M
9. STAFF RESTROOM 6.5 Sq. M



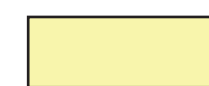
#### HEALTH SERVICE

1. CLINIC 20 Sq. M
2. PSYCHOLOGICAL CONSULTING ROOM 20 Sq. M
3. MASSAGE 24 Sq. M



#### CONTINUE EDUCATION

1. CLASSROOM 40 Sq. M
2. COMPUTER CLUSTER 33 Sq. M



#### STOREFRONT

1. GROCERY 32 Sq. M
2. HAIRCUT 32 Sq. M
3. POST OFFICE 32 Sq. M
4. BANK 28 Sq. M
5. GIFT STORE 30 Sq. M



#### SUPPORTING SPACE

1. SECURITY 15 Sq. M
2. RECEPTION 15 Sq. M
3. MECHANICAL ROOM 10 Sq. M
4. GENERAL OFFICE 11 Sq. M
5. NIGHT STAFF ROOM 23 Sq. M
6. STORAGE 12 Sq. M
7. JANITOR 3 Sq. M
8. GENERAL SERVICE ROOM 40 Sq. M



#### LIVING UNITS

- EFFICIENCY 40 Sq. M
- ONE-BED ROOM APARTMENT 64 Sq. M
- TWO-BEDS ROM APARTMENT 64-80 Sq. M



#### ACTIVITY SPACE

1. SUN ROOM 340 Sq. M
2. ART STUDIO 132 Sq. M
3. READING ROOM 132 Sq. M
4. FITNESS ROOM 132 Sq. M
5. TEA ROOM 132 Sq. M
6. MULTIPURPOSE ROOM 35 Sq. M
7. RESIDENCE ACTIVITY ROOM 40 Sq. M

DEPARTMENT OF ARCHITECTURE AND  
LANDSCAPE ARCHITECTURE, NDSU

ARCH 772 DESIGN THESIS, SPRING 2013

PROJECT TITLE:  
"BUILDING SENSES, A FRESH LOOK AT A  
MEANINGFUL RETIREMENT COMMUNITY  
FOR THE PEOPLE OF ZHENGZHOU ,CHINA

TYPOLOGY: ELDERLY FACILITY

SIZE: 17965 Sq. M

NAME: ZHE LIU

THESIS ADVISER:  
STEVE. C. MARTENS

SOFTWARE: REVIT, PHOTOSHOP, INDE-  
SIGN, ILLUSTRATOR, SKETCHUP.

