

Accessibility

Through Design

A long term care facility in Duluth, MN.

Erik Schwarzkopf. Arch 772. Vorderbruggen. Spring 2013



St. Mary's Medical Center

Lake Superior

10 min. walk

5 min. walk

How can the design of a long-term care facility help promote physical and social accessibility of the elderly within an urban fabric so as to benefit both the residents and the community?

Duluth Entertainment Convention Center

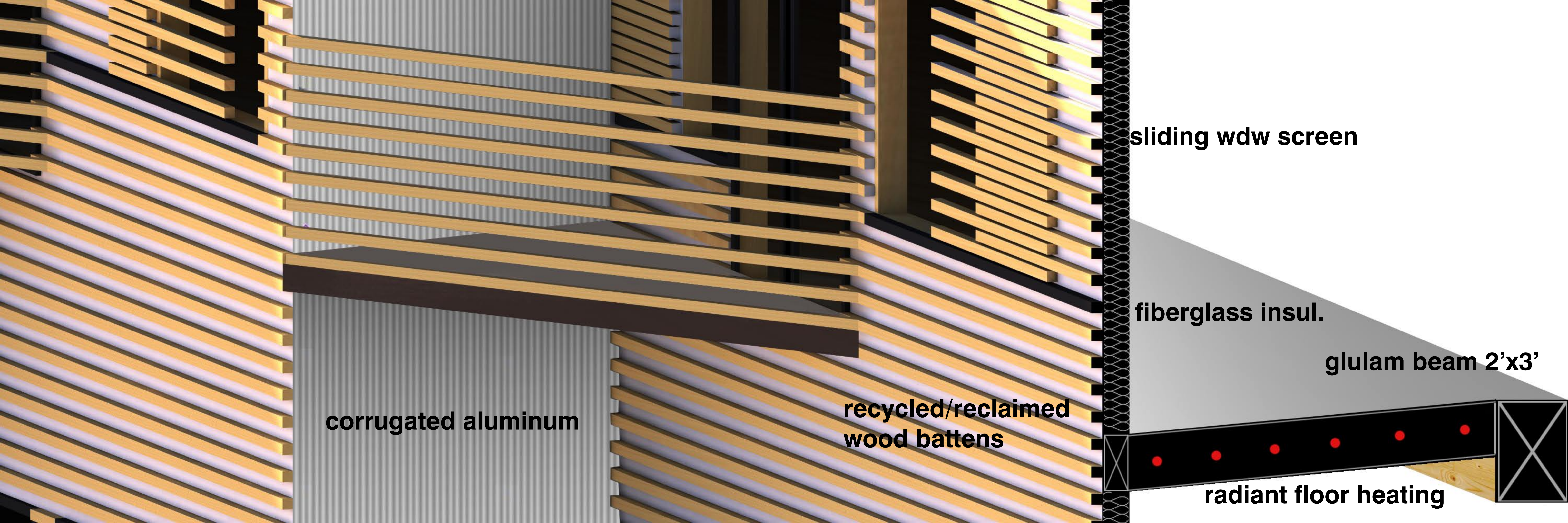
Canal Park

Duluth Harbor

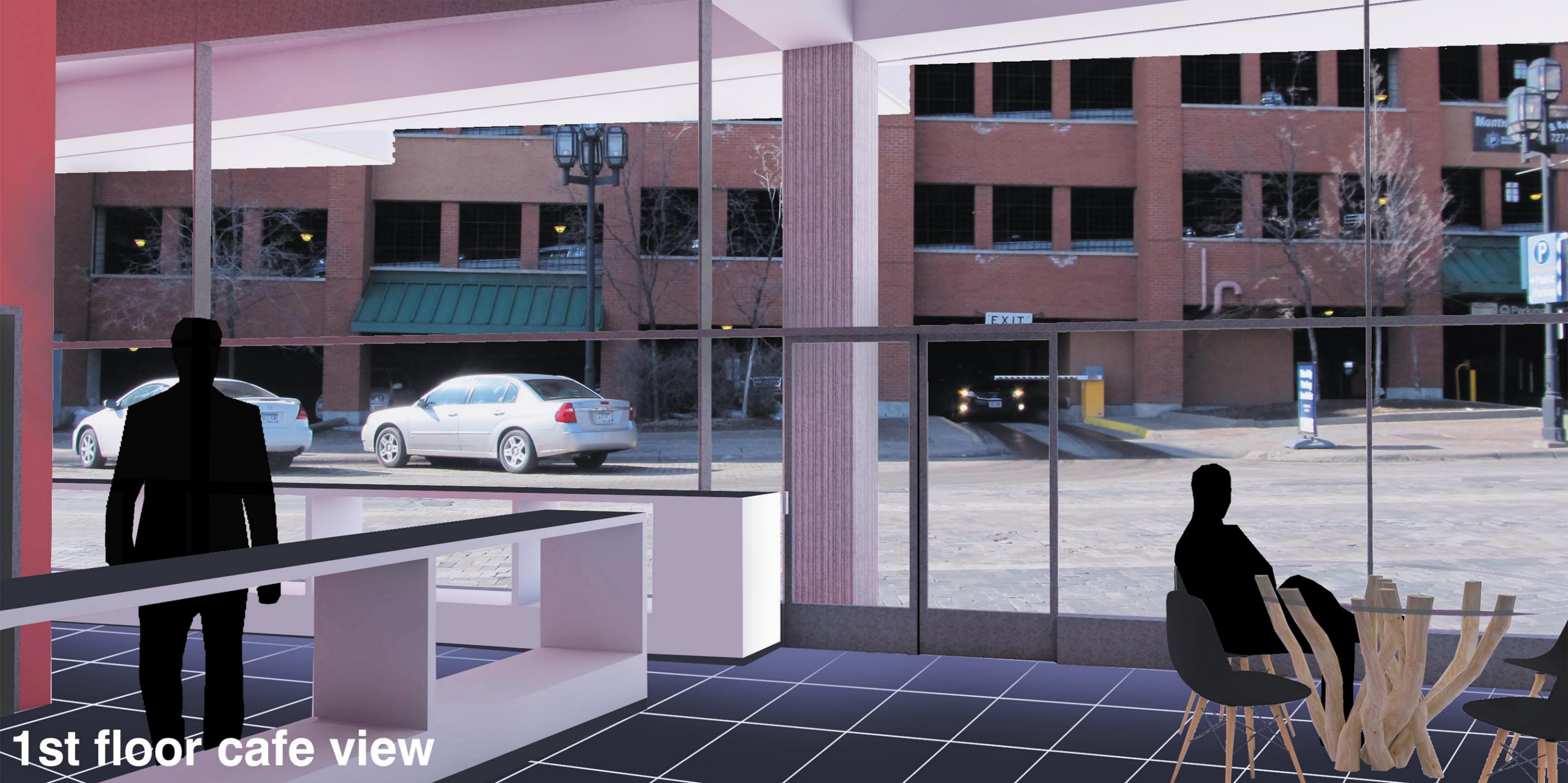
Aerial Lift Bridge







1st floor cafe view





LAKE PLACE BUILDING

Best Place on EARTH

CHINESE DRAGON

basement

parking

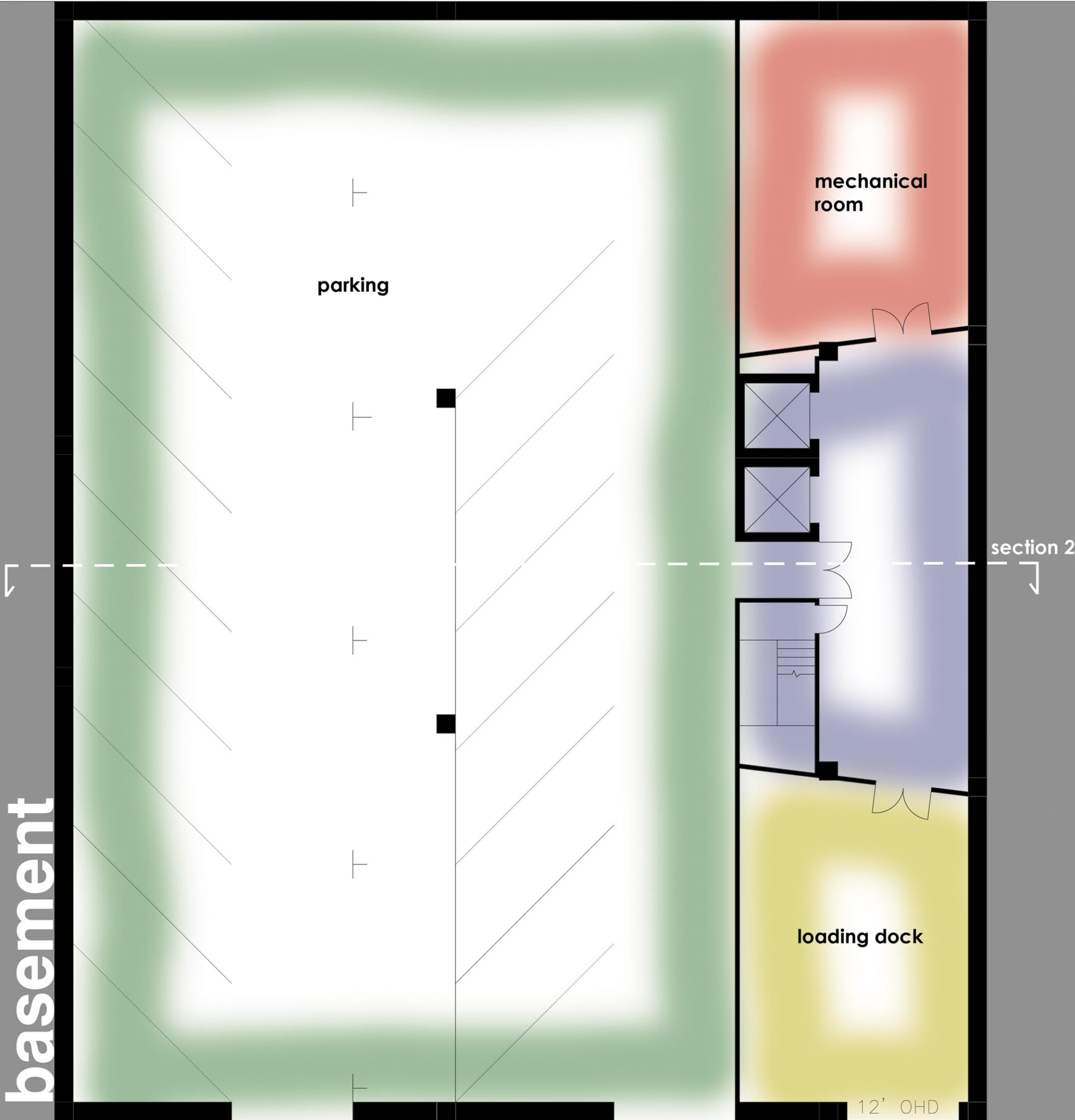
mechanical room

section 2

loading dock

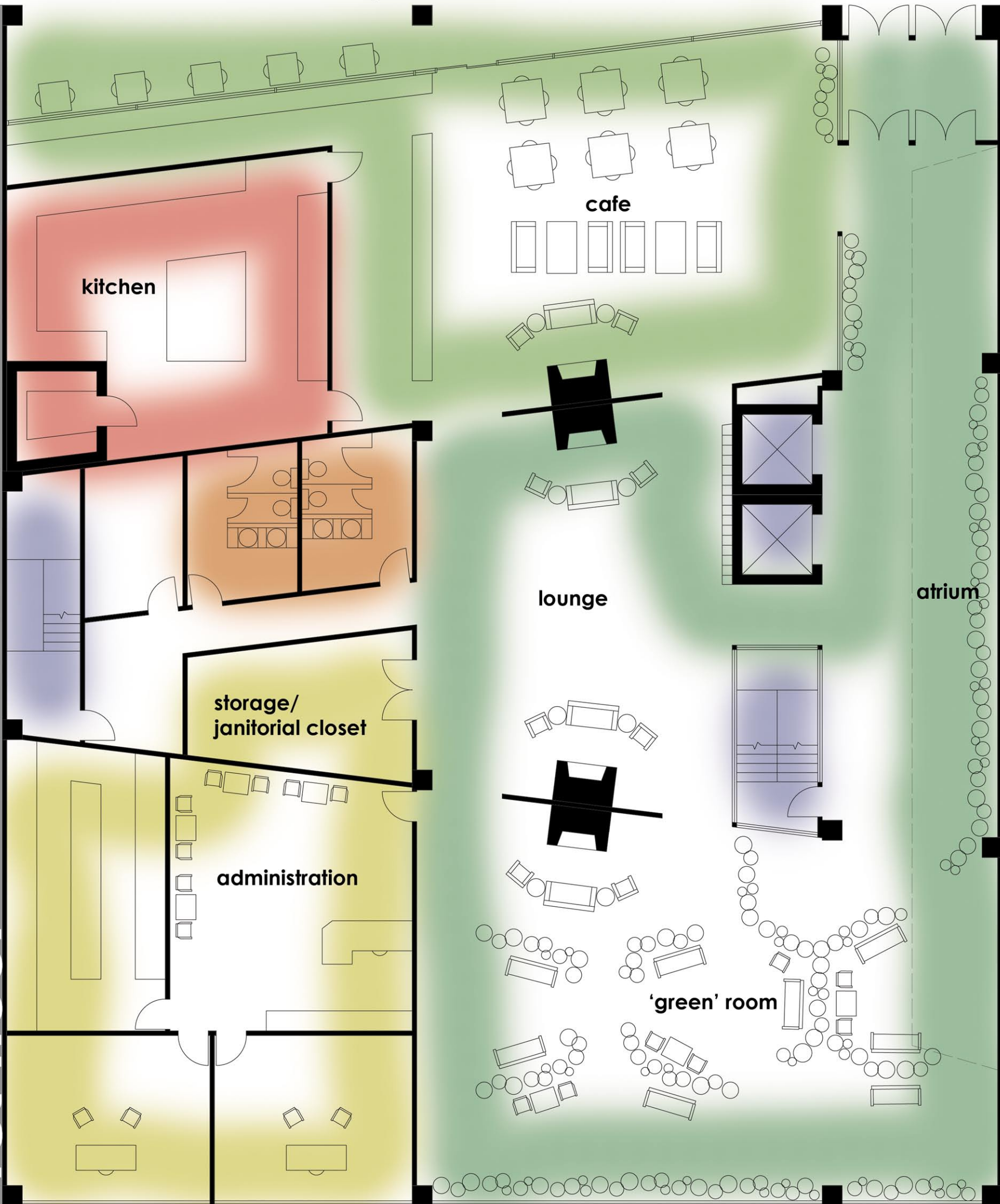
12' OHD

Michigan Ave



Superior Street

1st floor



kitchen

cafe

lounge

storage/
janitorial closet

administration

'green' room

atrium

2nd floor



lab room

clinic

reception

lounge

storage

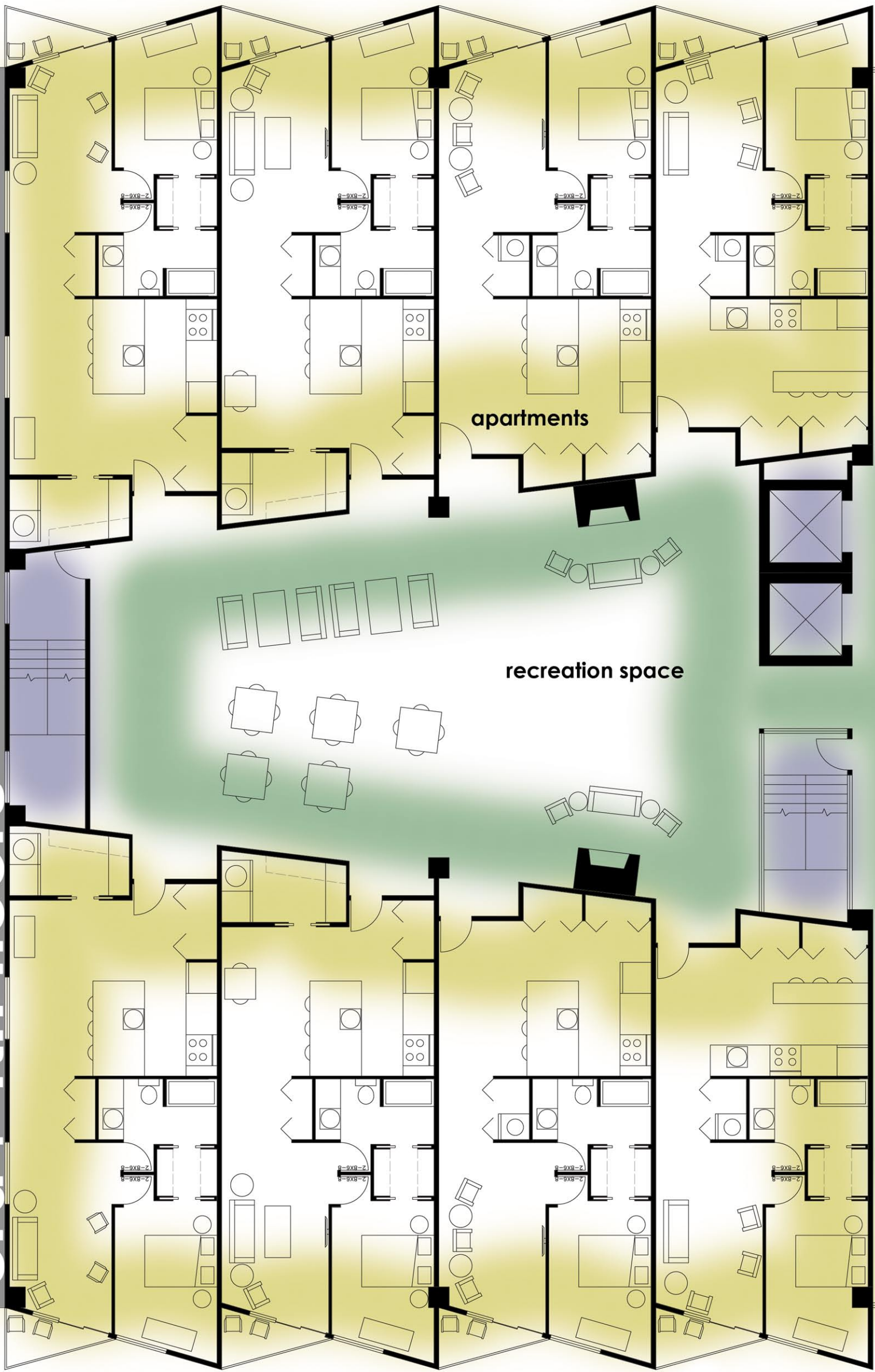
sauna

pool

wellness center

atrium

3rd+4th floors



apartments

recreation space

atrium

5th floor



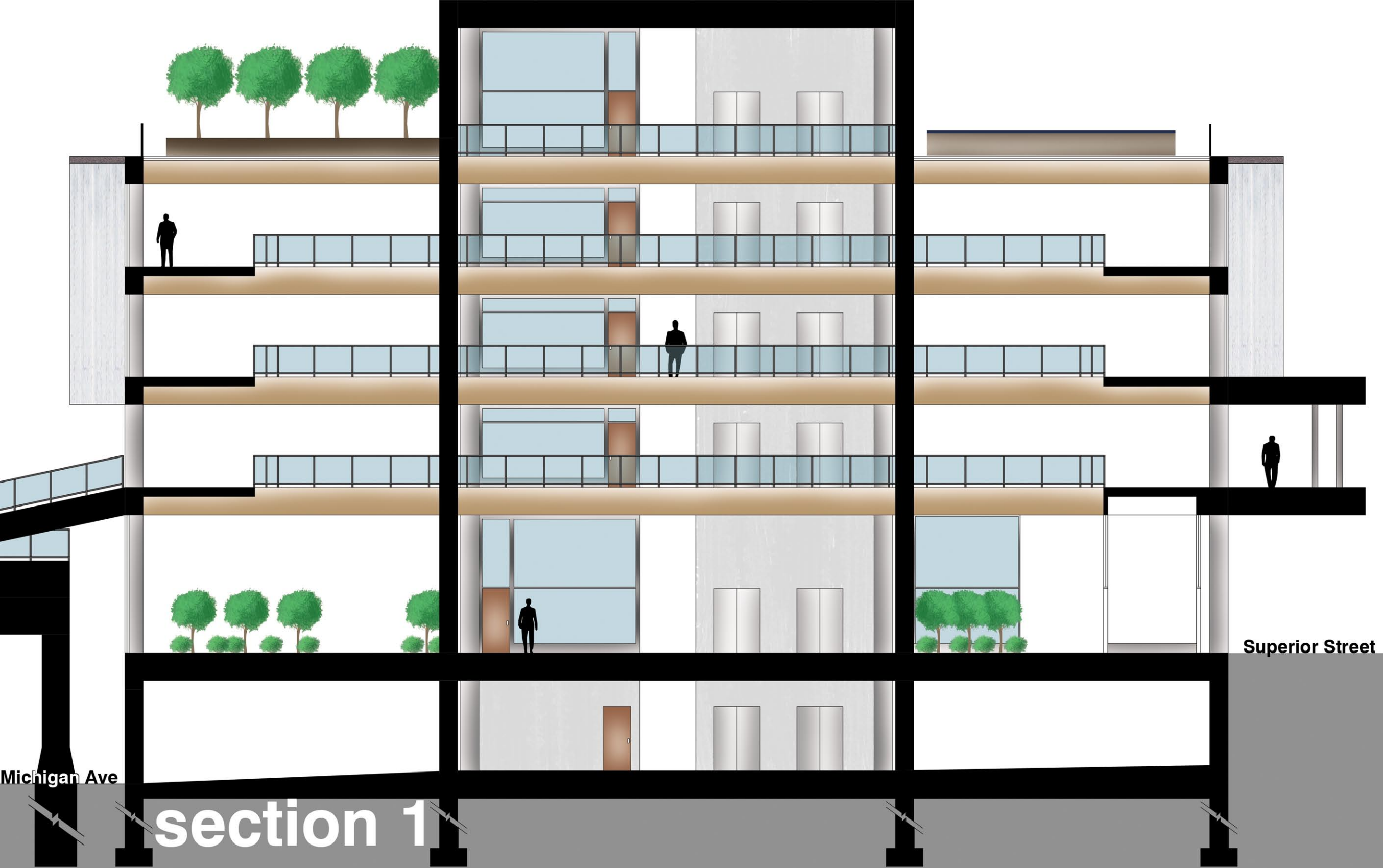
uv panels

lounge

atrium

greenroof

viewing deck



section 1

Michigan Ave

Superior Street



north elevation

