



[Photograph by C. Payne]



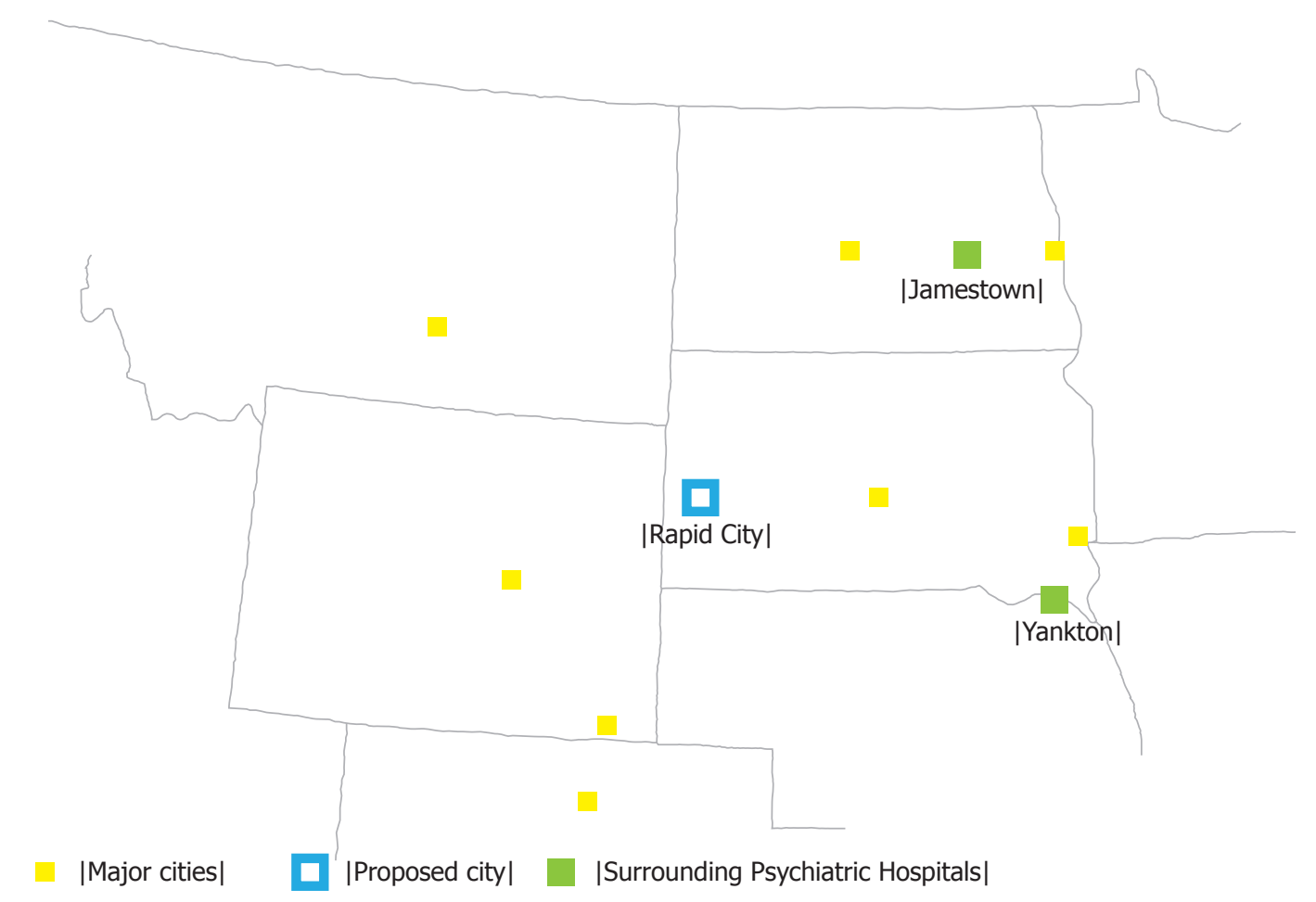
[Photograph by C. Payne]



[Photograph by C. Payne]



[Photograph by C. Payne]



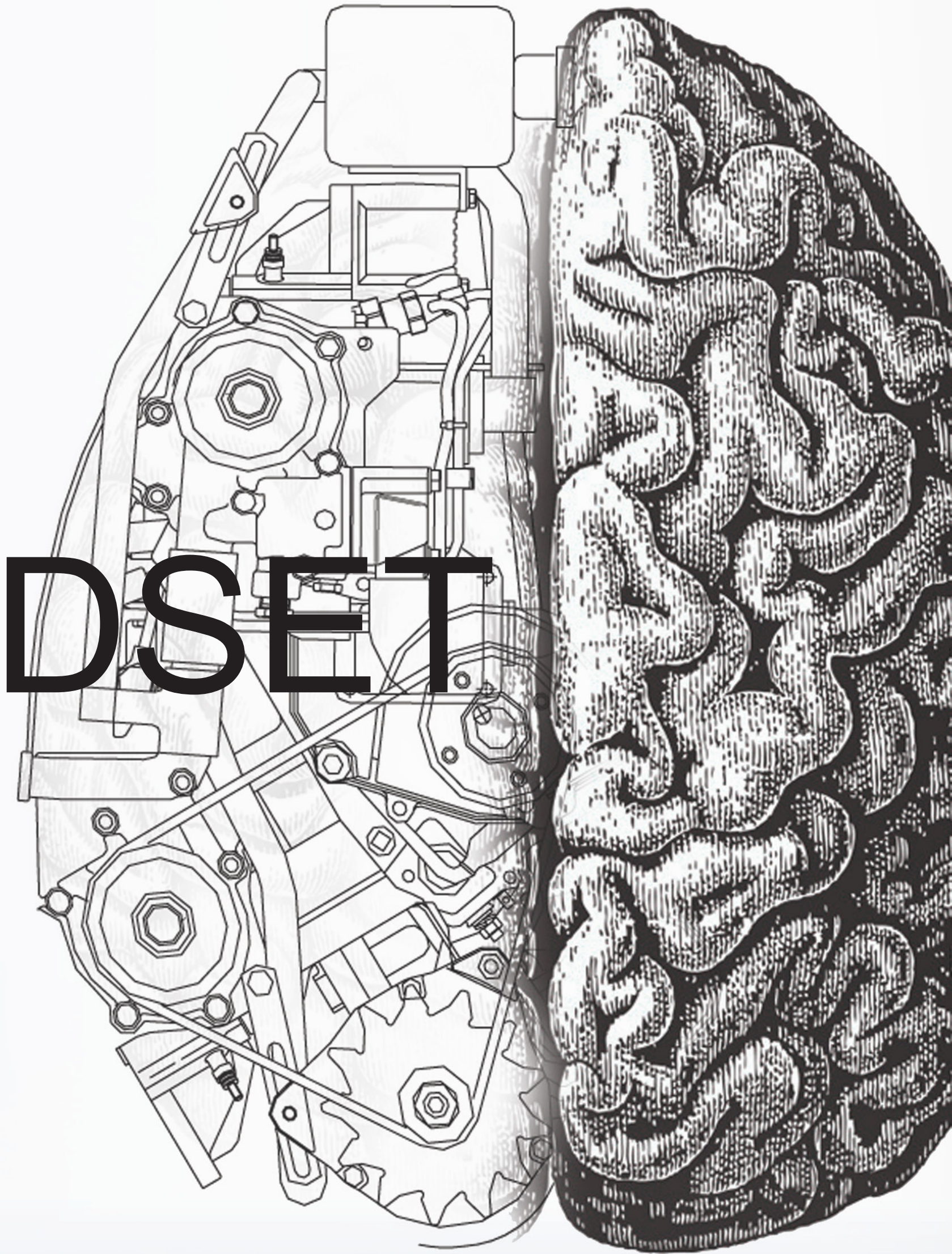
[Major cities] [Proposed city] [Surrounding Psychiatric Hospitals]

Society utilizes space as a tool to distance its most challenging and difficult citizens. In examining the question, "How can architecture influence the re-establishment of psychiatric stability in the mentally ill?", the understanding of spacial issues and how the users interact with the space can better the understanding of psychiatric facilities and the environment.



[Photograph by C. Payne]

MINDSET

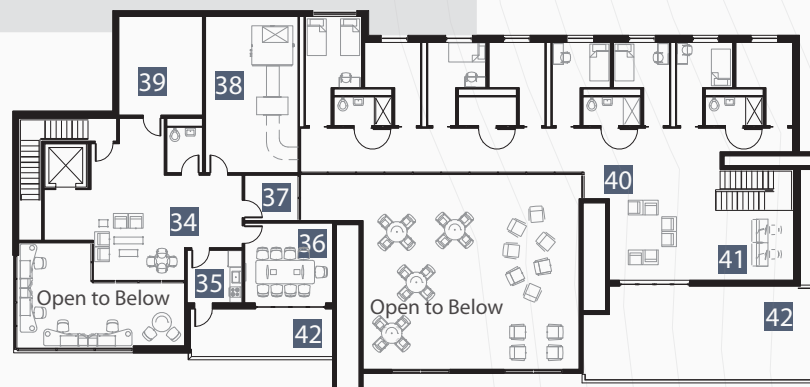


| Problem Statement |

How can architecture and environment influence the re-establishment of psychiatric stability in the mentally ill?



**Patient Cabin
Second Level
Similar**
5322 sq ft



**Patient Cabin
Second Level**
5051 sq ft



**Main Facility
Second Level**
9,106 sq ft



Basement Level
18,554 sq ft

Main Facility

- 1 Guest and Visitor Entry
- 2 Communications | Security
- 3 Classroom | Small Group Room
- 4 Occupational Therapy
- 5 Physical Therapy
- 6 Commercial Kitchen
- 7 Snack Shop
- 8 Quiet Area
- 9 Salon
- 10 Chapel | Multifunctional Area
- 11 Art and Music Area
- 12 Library
- 13 Janitorial | Mechanical Closet

Admission Area

- 14 Admission Entry
- 15 Luggage Storage
- 16 Interview Room
- 17 Search Room
- 18 Consultation Room
- 19 Discharge Office
- 20 Documentation Area
- 21 Medical Records
- 22 Admission Storage

**Main Facility
Second Level**

- 23 Clinic
- 24 Medical Storage
- 25 Lab Work
- 26 Pharmacy
- 27 Conference Room
- 28 Medical Records
- 29 Doctors Office
- 30 Mechanical | Janitorial Closet
- 31 Copy | Locker Storage
- 32 Staff Kitchen
- 33 Team Planning | Education Area



Main Facility First Level 15,911 sq ft.

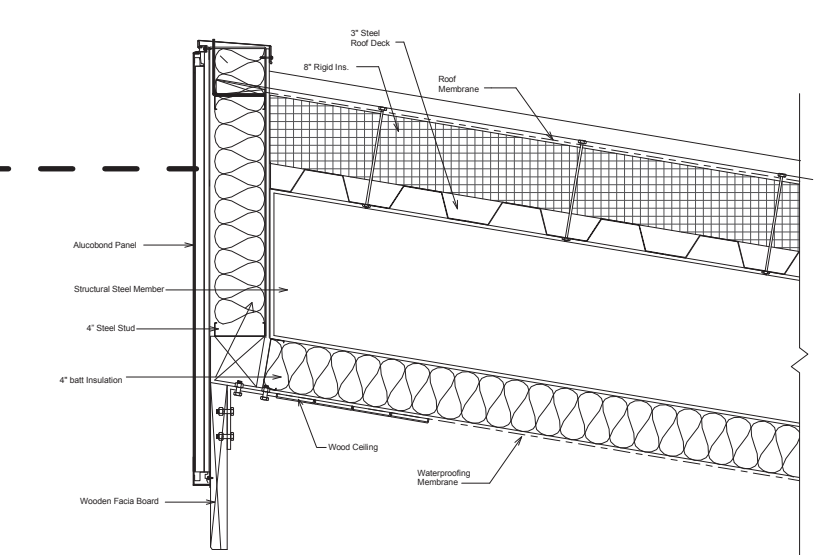
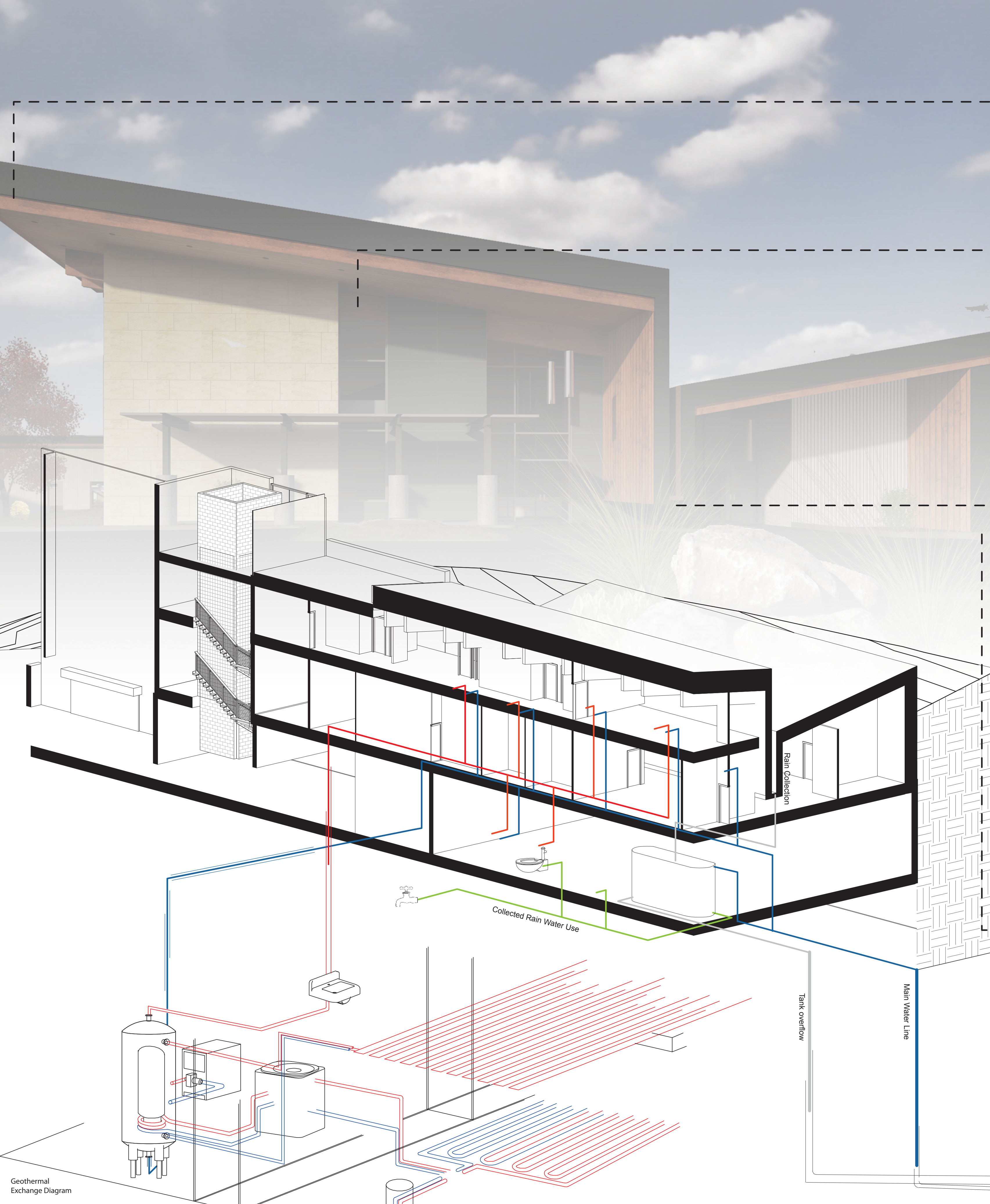
Patient Cabin First Level 18,062 sq ft.

**Patient Cabin
Second Level**

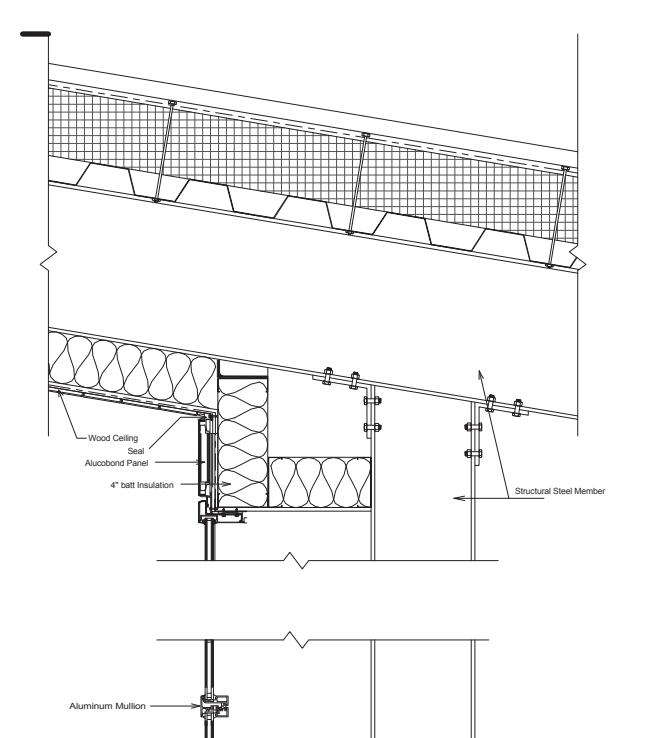
- 34 Staff Common Space
- 35 Staff Kitchen
- 36 Planning | Meeting Room
- 37 Office
- 38 Mechanical
- 39 Patient Storage
- 40 Common Space
- 41 Nurse Station
- 42 Outdoor Access

Patient Cabin 1 | 2

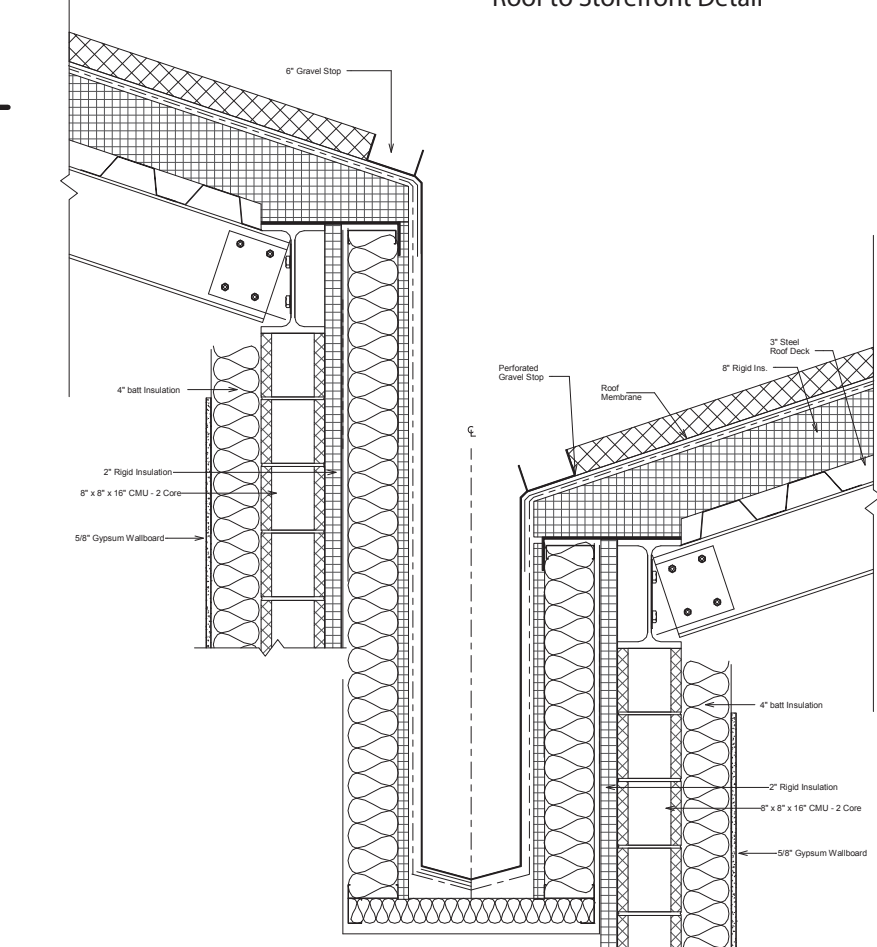
- 43 Patient Laundry
- 44 Nurse Station
- 45 Kitchen
- 46 Housekeeping
- 47 Soiled | Clean Linen
- 48 Equipment Storage
- 49 Seclusion
- 50 Documentation Area
- 51 Social Worker Office
- 52 Medication Room
- 53 Day | Night Charge Nurse
- 54 Dining | Common Space
- 55 Quiet Area
- 56 Patient Room
- 57 Visitation | Consultation Space



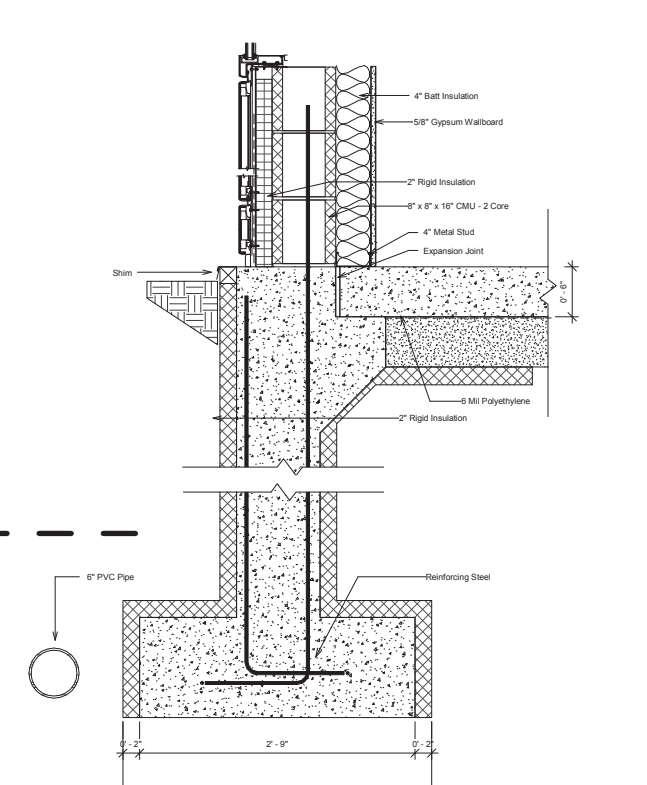
Roof and Parapet Detail



Roof to Storefront Detail



Man Facility Scupper Detail



Foundation Detail 1 | 1.5scale

Geothermal Exchange Diagram

Drainage System

Department of Architecture and Landscape Architecture, NDSU
 ARCH 772 | Design Thesis | Spring 2013
 Mindset | Satellite Psychiatric Facility | 61,230 sq. feet
 Whitney Feimer
 Joan Vorderbruggen
 Revit | AutoCAD | 3DS Max | Illustrator | Indesign | Photoshop

20 foot ceilings to enhance an open feeling. Earth-tone wooden ceiling to de-institutionalize the environment

Floor to ceiling windows for lighting and view

Suspended ceiling lights with 5 pound pull weight restrictions

Books, tapes, books on tape, CD's, newspapers, computers

Neutral patterned carpet for noise reduction



As psychiatric patients recover, reading and multi-media entertainment are critical to restoring concentration and attention. Patients often congregate in the library to study about their mental illness, listen to music, watch movies and read their local newspapers. Library settings offer a "normalized" environment for social

Accent stone tiled fireplace for comfort and atmosphere

Large, heavy comfortable lounging chairs

15 foot ceilings to enhance an open feeling

Aroma therapy sections with pleasing smells

Floor to ceiling bubble water features to promote calming emotions through sight and sound

| LIBRARY |



A Sensory Experience
Psychiatric patients spend a great deal of time walking the hallways. These spaces are critical to orienting patients to their environment as well as offering open areas for quiet meditation and social interaction.

Earth tone wooden ceilings to de-institutionalize the environment

Large landscape windows overlooking the horizon

Spacious, comfortable lounging chairs and coffee tables to encourage participation in social interactions

Solid floor tiles to reduce visual stimulations (hallucinations)
Tiled floors for cleanliness

| HALL LOUNGE |

Rippling waterfall wall

Central trees, fragrant flowers and flowering plants

FUNCTION
Social gathering
Exercise and recreational activities
Relaxation and meditation

Wood mulch to reduce the potential for broken windows

Concrete walking paths lined with colorful shrubs and bushes



Patients respond positively to the calming effects of the outdoors. In this unique space, patients have an opportunity to warm themselves in the sunlight, enjoy the gentle sounds of a waterfall, engage in playful activities and build social relationships.

Trees strategically spaced within the central section of the garden, away from rooftops (to discourage unauthorized leave from the hospital)

SAFETY
Retaining wall benches
Low level shrubs along outside perimeter of the garden space

Psychiatric patients are often physically disorganized during their hospitalization. Patient rooms are deliberately simple, yet functional, to ensure individual privacy and adequate space to be "messy".

| GARDEN |



Large landscape window

Individual rooms

Above the bed/desk recessed reading lights

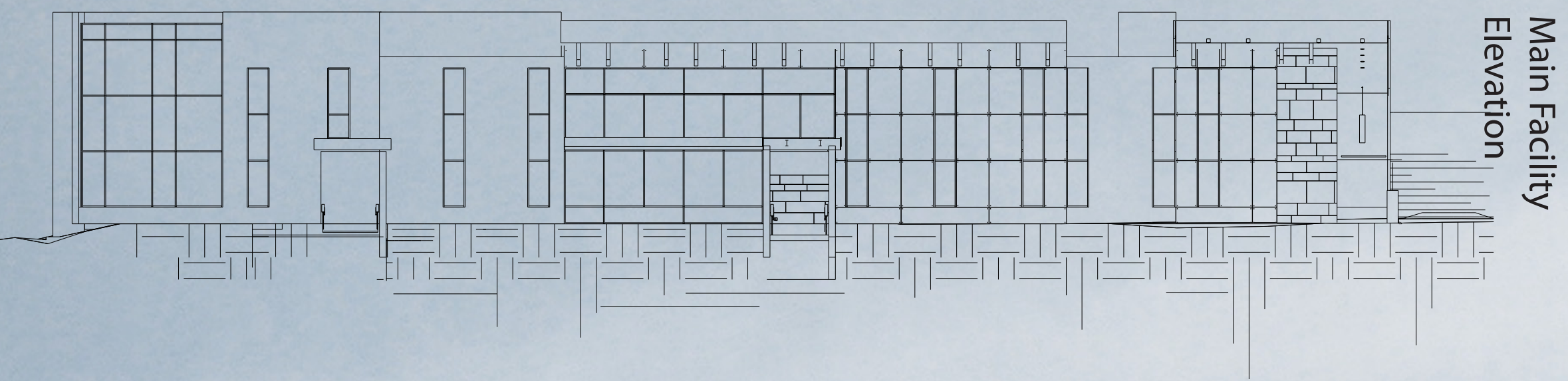
Anchored, built-in bed frames with removable mattresses

Built-in storage drawers under the bed frame

Built-in desks

Wooden floors

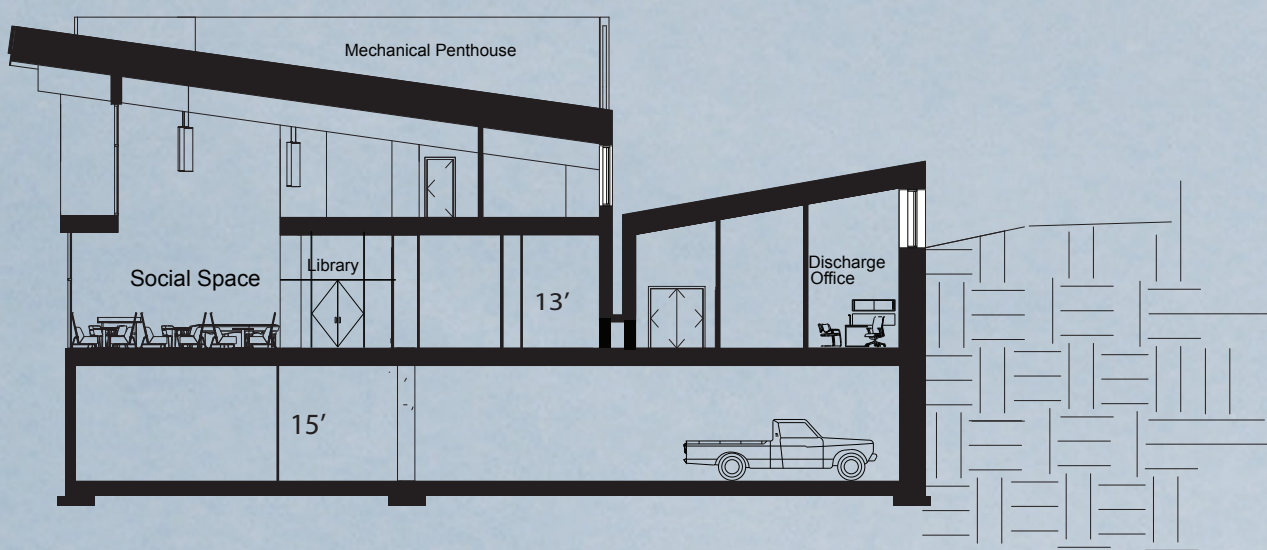
| Patient Rooms |



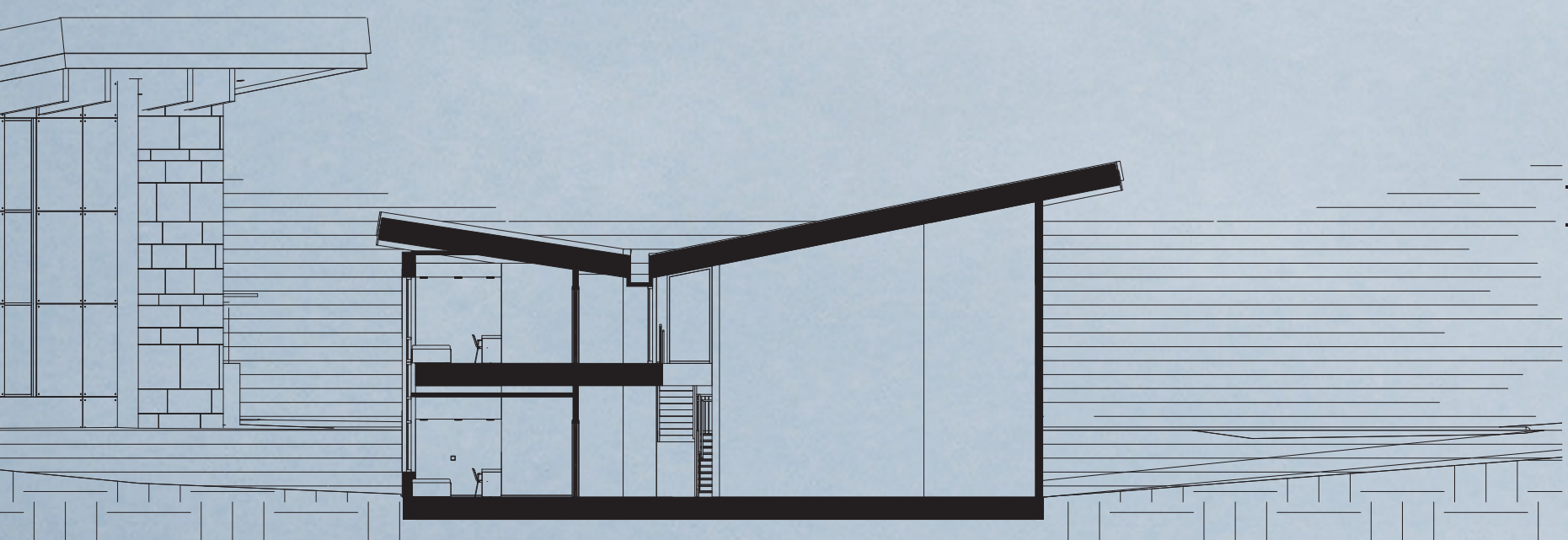
Main Facility
Elevation



Patient Cabin
Elevation



Main Building
|a| Section



Patient Cabin
|b| Section



Patient Cabin
|c| Section

