

# Mind Set

Whitney Feimer



| Problem **Statement** |

How can architecture and environment influence the re-establishment of psychiatric stability in the mentally ill?

## | **Claim** Under Investigation |

Architecture can facilitate the integration of spacial context and parameters with the challenge of meeting the psychiatric, physiological, biorhythmic and social needs of the mentally ill patient.

## | Theoretical/**Unifying Idea** |

The architecture of space adapts to a spectrum of function needs, from advanced security to appropriate medical care and high intensity psychiatric treatment. Design plays an important role in creating a therapeutic environment where the mentally ill can receive appropriate psychiatric attention, while simultaneously protecting the patient and society from dangerous situations. Approching this facility with an evidence-base design emphasis; a suitable environment will ensure the well being of its users. (Huisman, Morales, van Hoof, & Kort, 2012).

## | Project **Typology** |

South Dakota Satellite  
Psychiatric Facility



**|Region|**

South Dakota's current psychiatric hospital is located in Yankton, SD. Despite being located in the far southeastern region of South Dakota, this single State hospital services the entire state of South Dakota, as well as five surrounding states (Nebraska, Iowa, Minnesota, Montana and Wyoming). By placing a second psychiatric facility on the outskirts of the Rapid City region (western South Dakota), this proposed location would better service the western half of South Dakota, Wyoming and Montana.



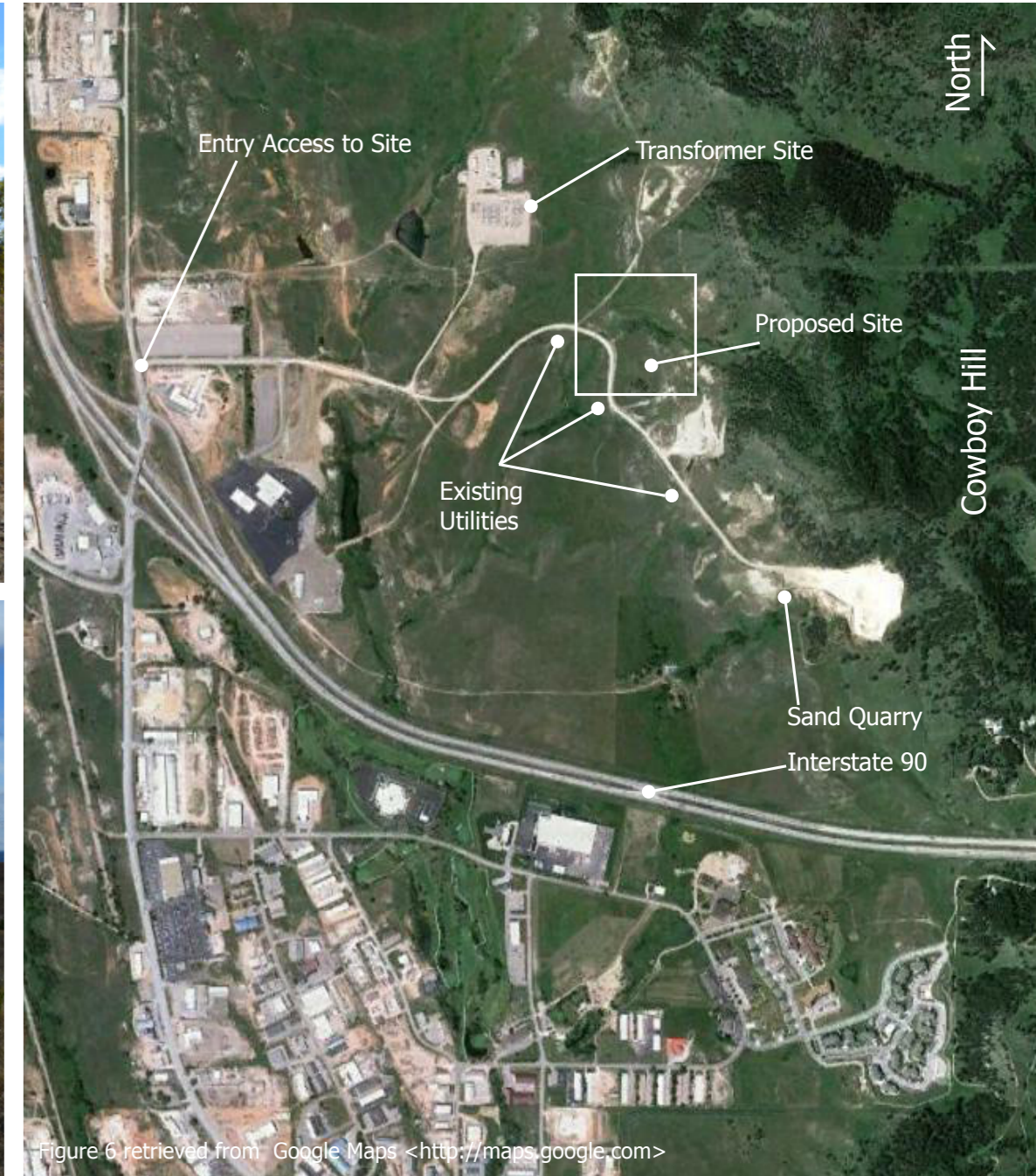
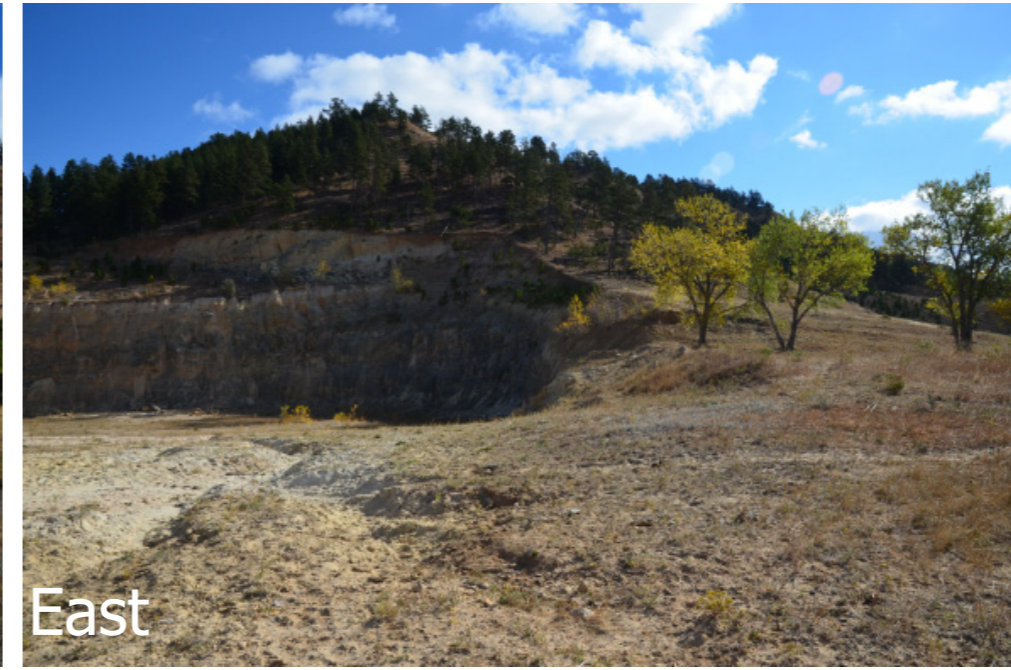
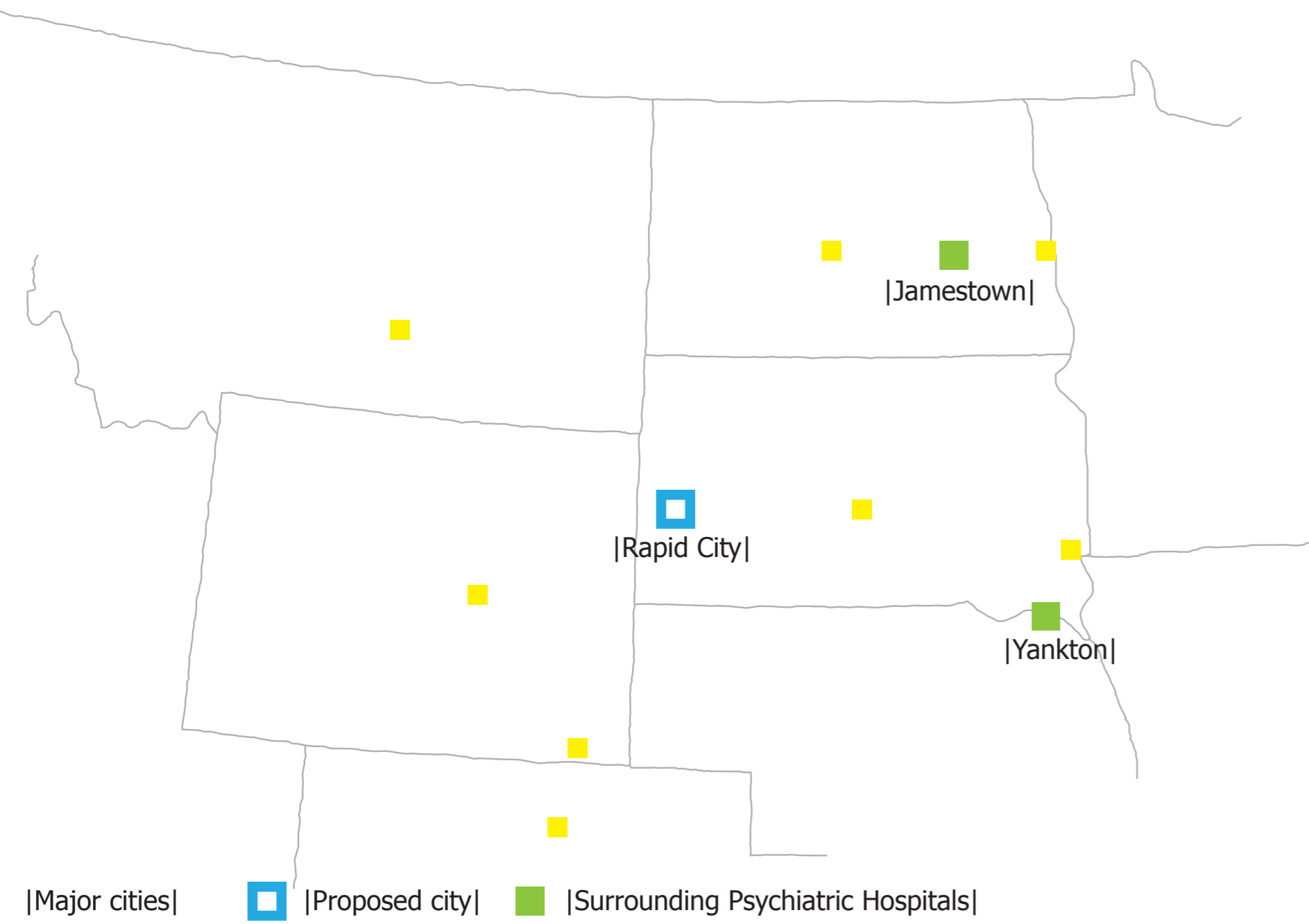
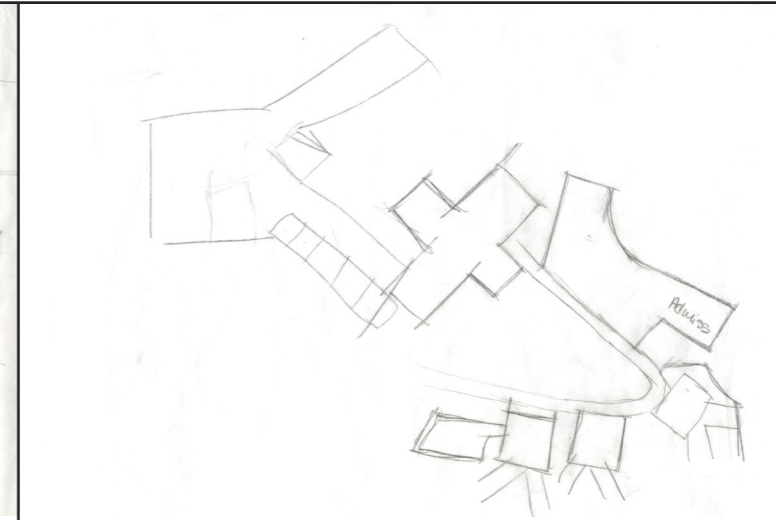
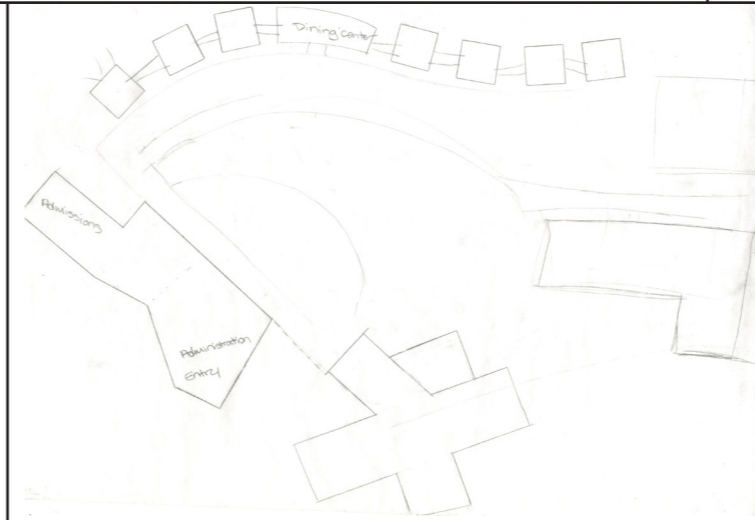
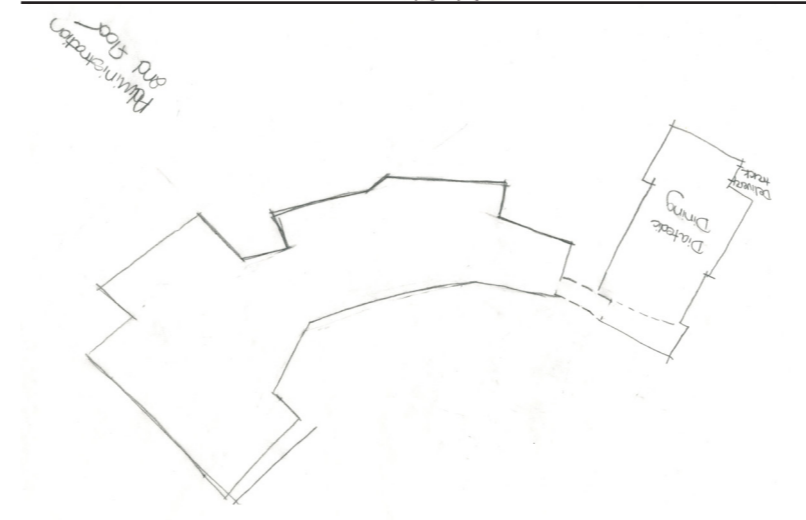
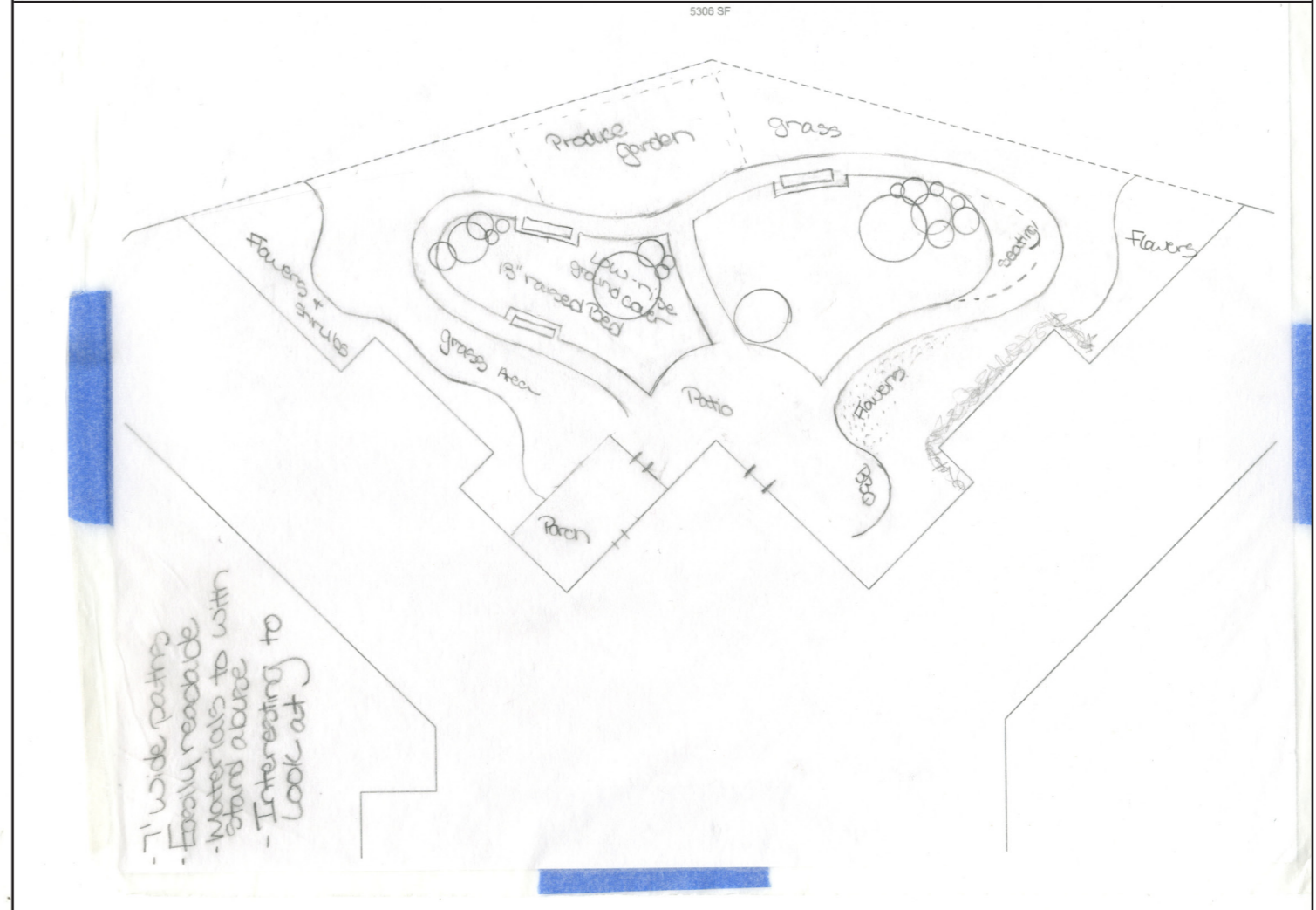
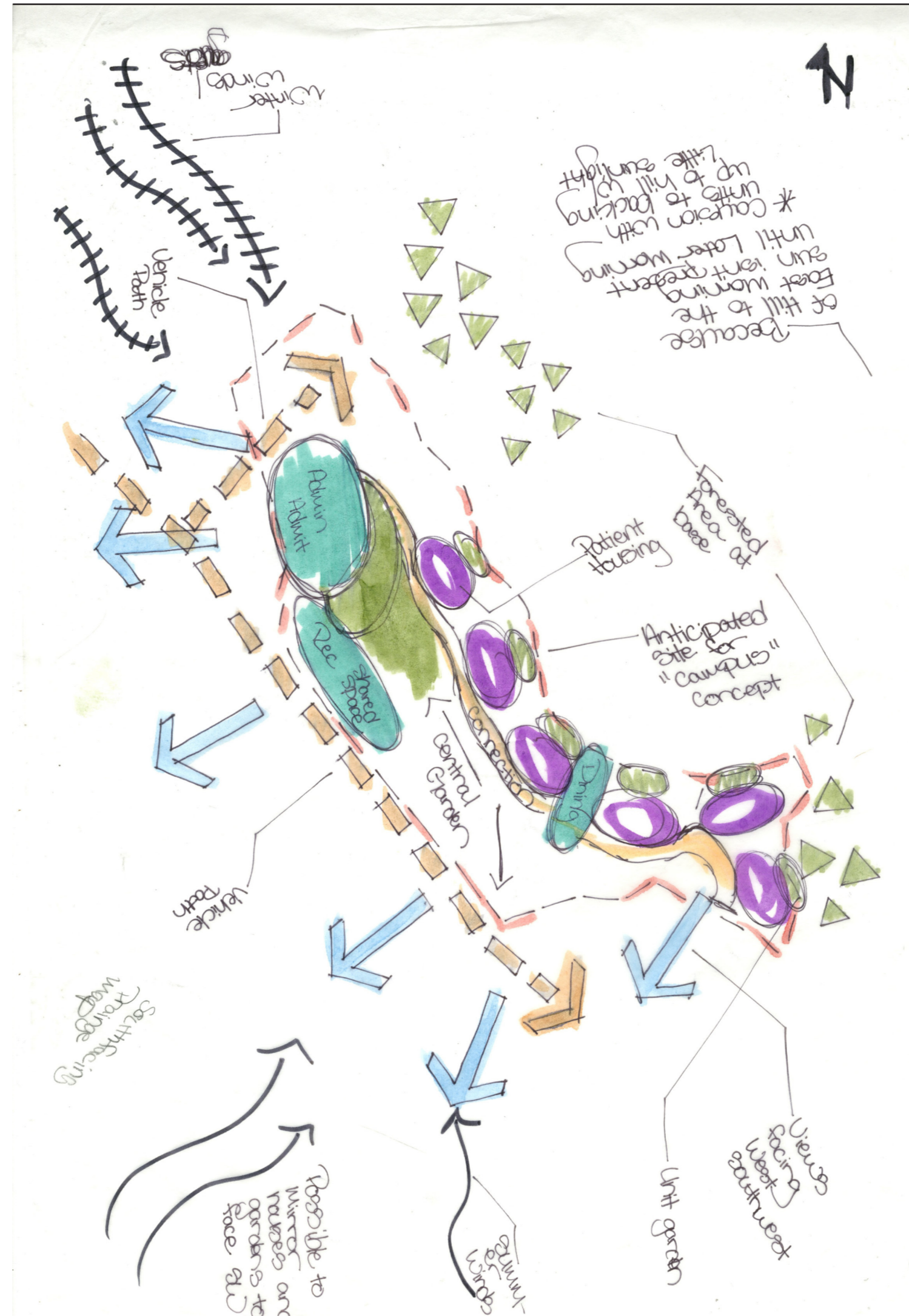
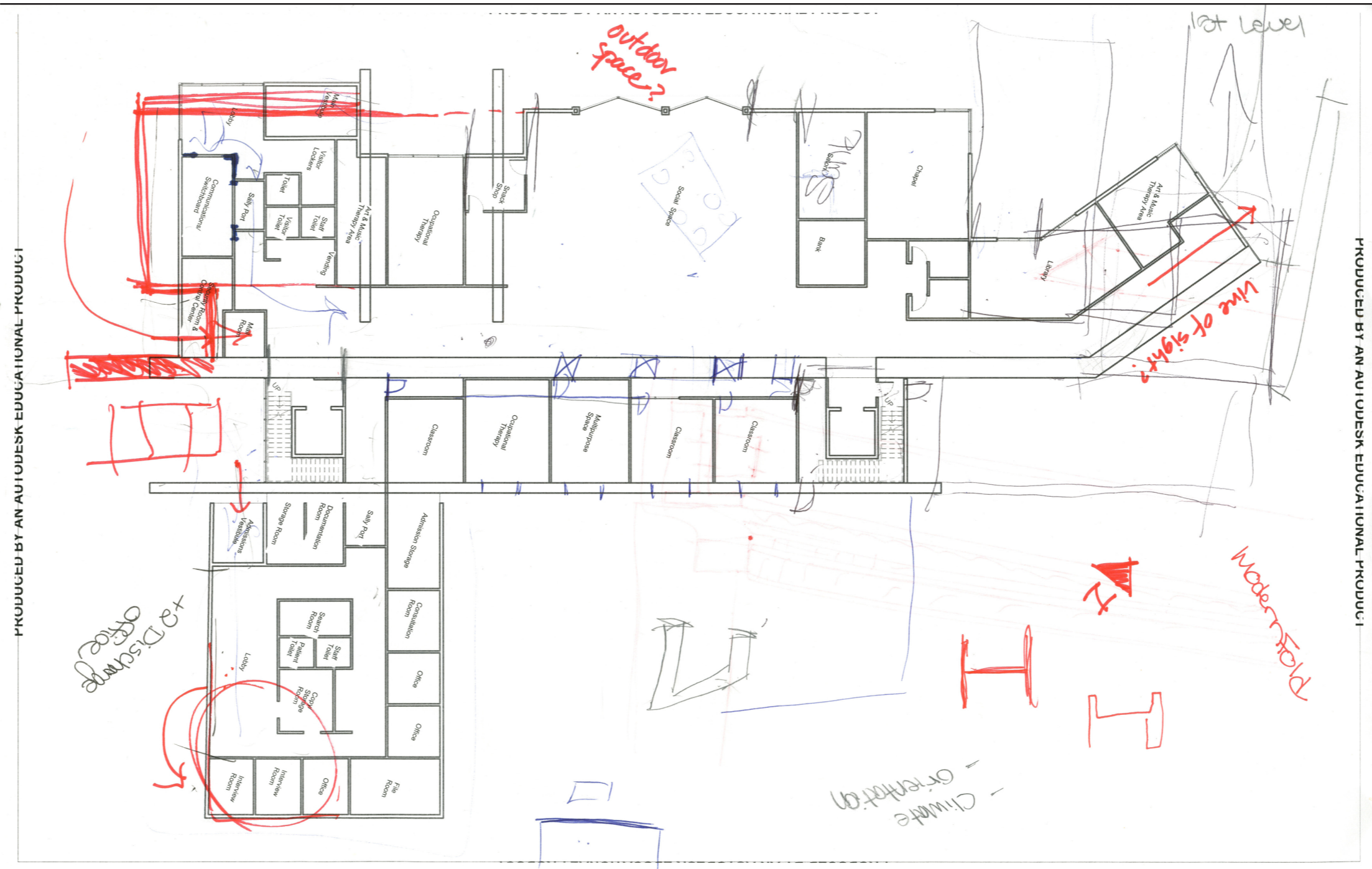


Figure 6 retrieved from Google Maps <<http://maps.google.com>>

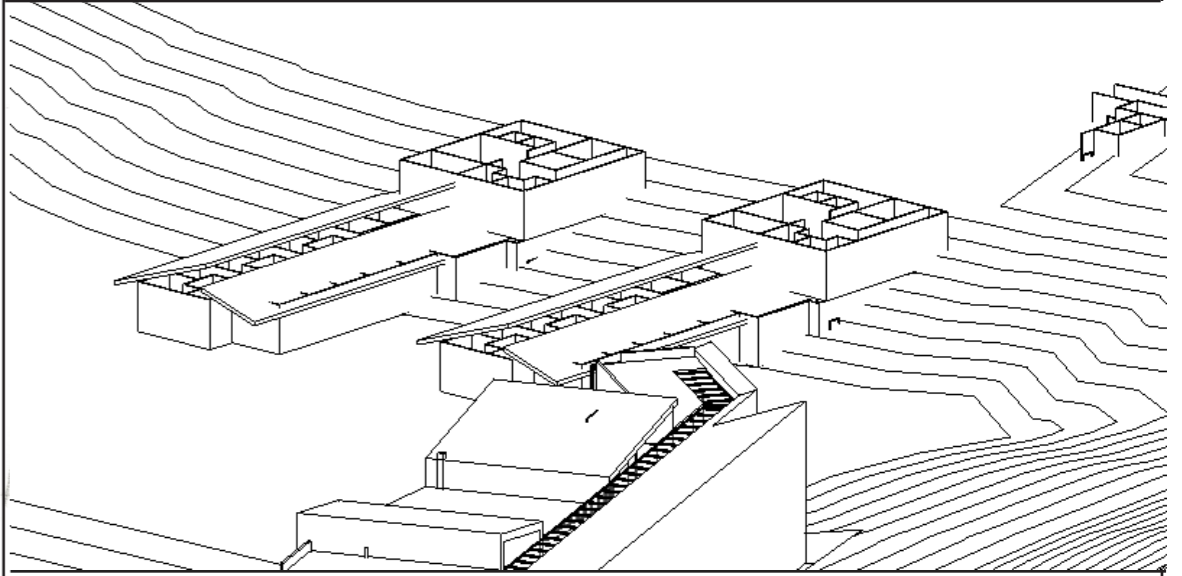
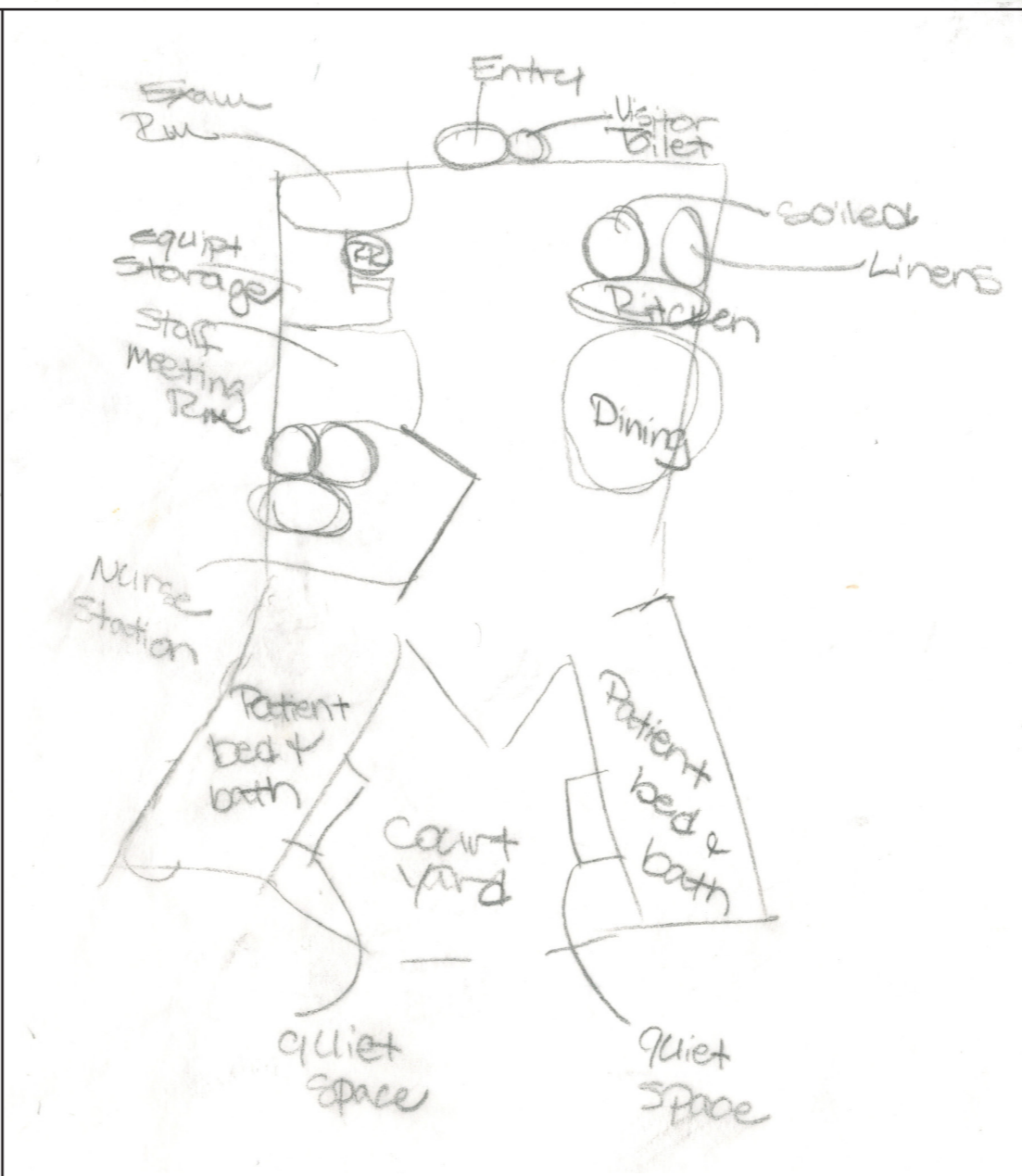
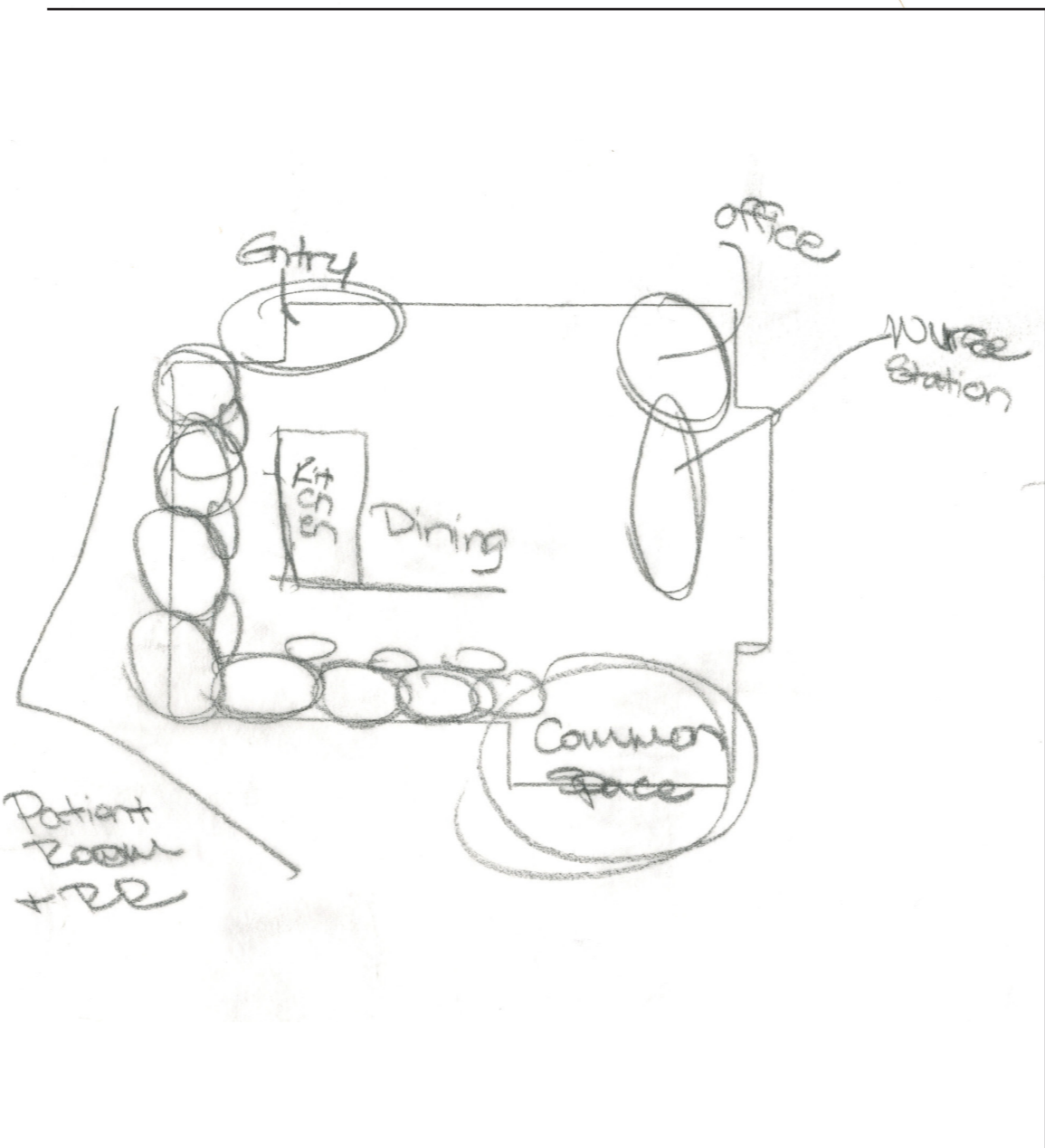
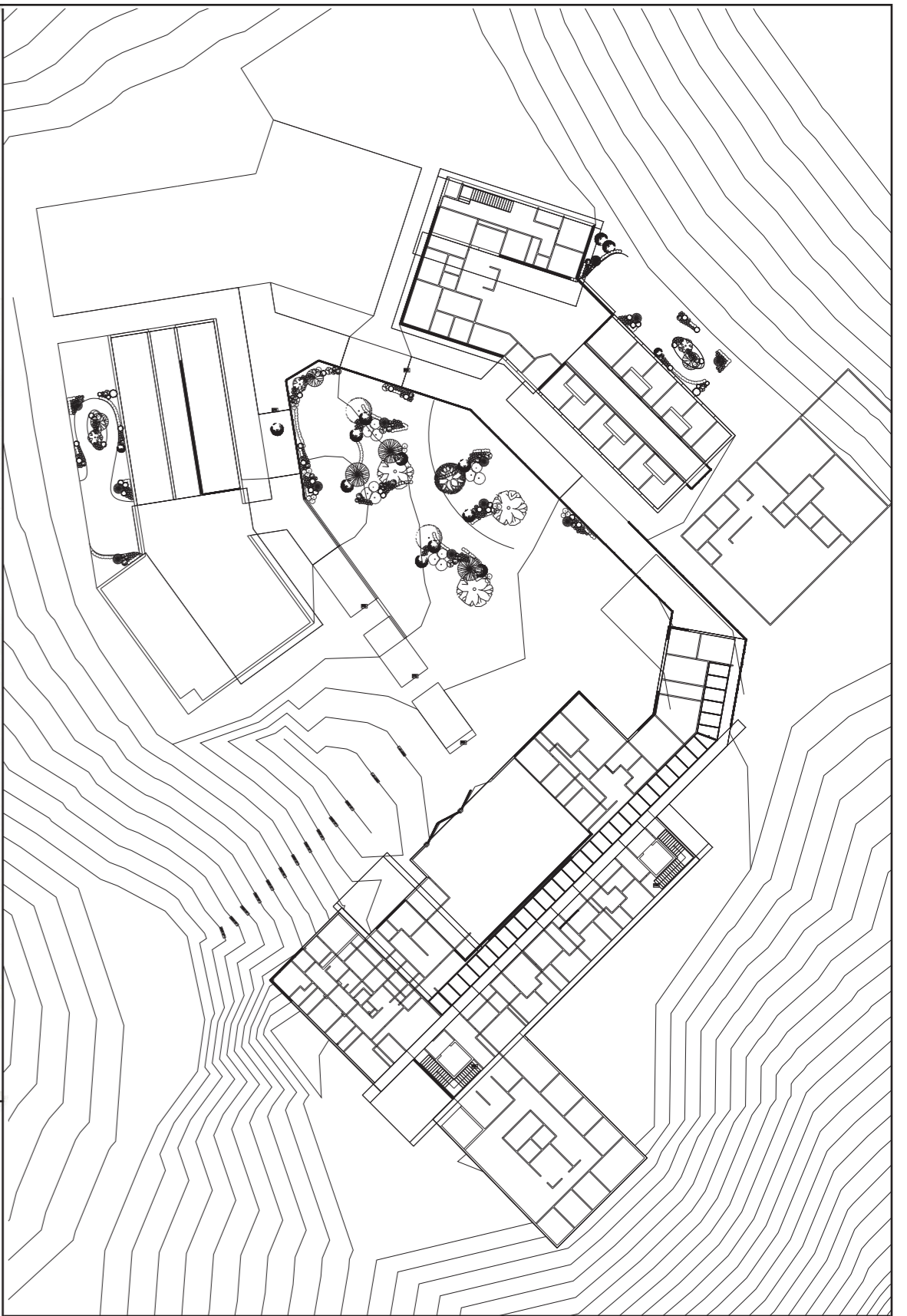


**|Site Sketches|**

PRODUCED BY AN AUTODESK EDUCATIONAL PRODUCT



PRODUCED BY AN AUTODESK EDUCATIONAL PRODUCT



|Building Process|





**Patent Living Units**

Administrative

**Patient Downtown**

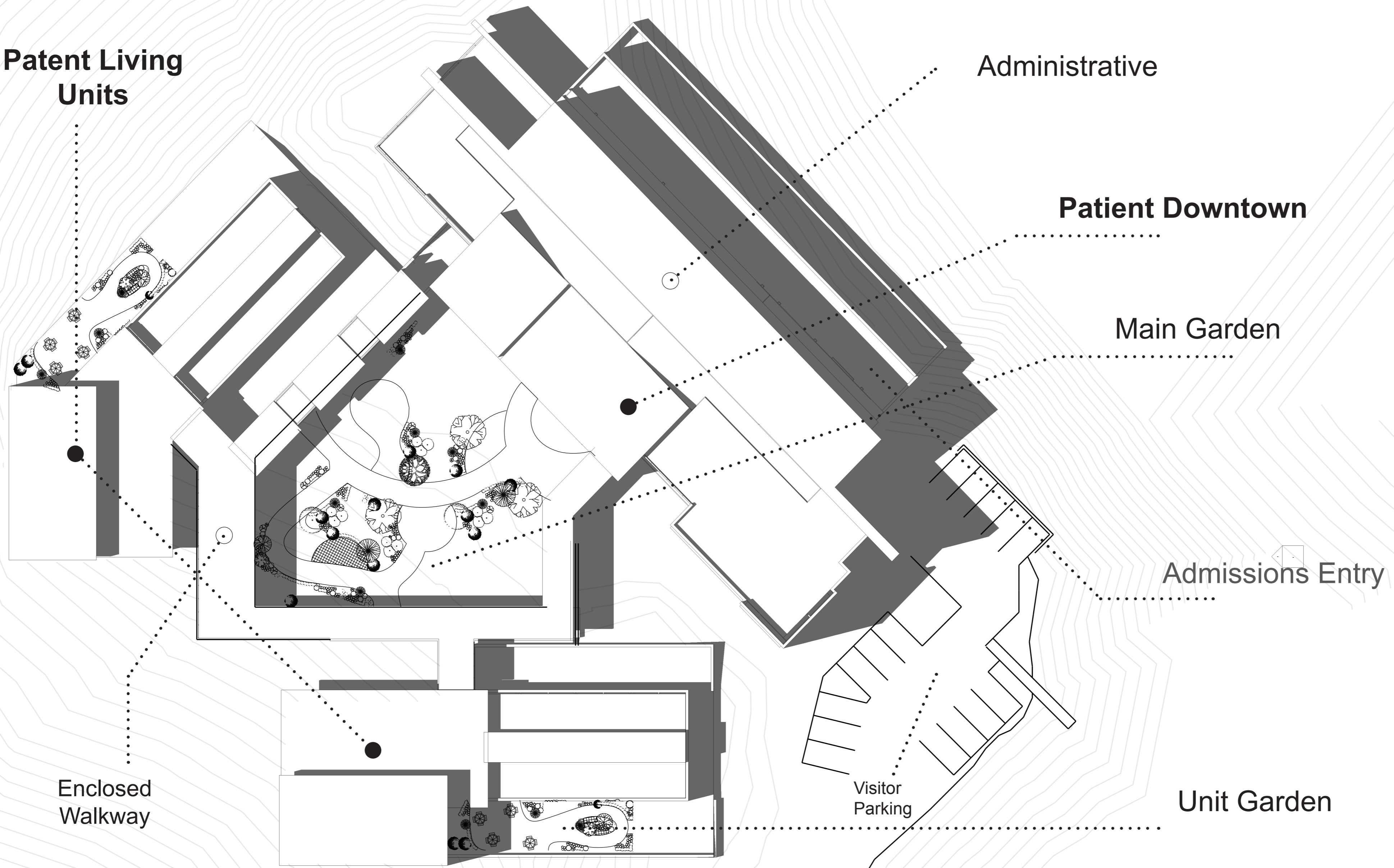
Main Garden

Admissions Entry

Enclosed Walkway

Visitor Parking

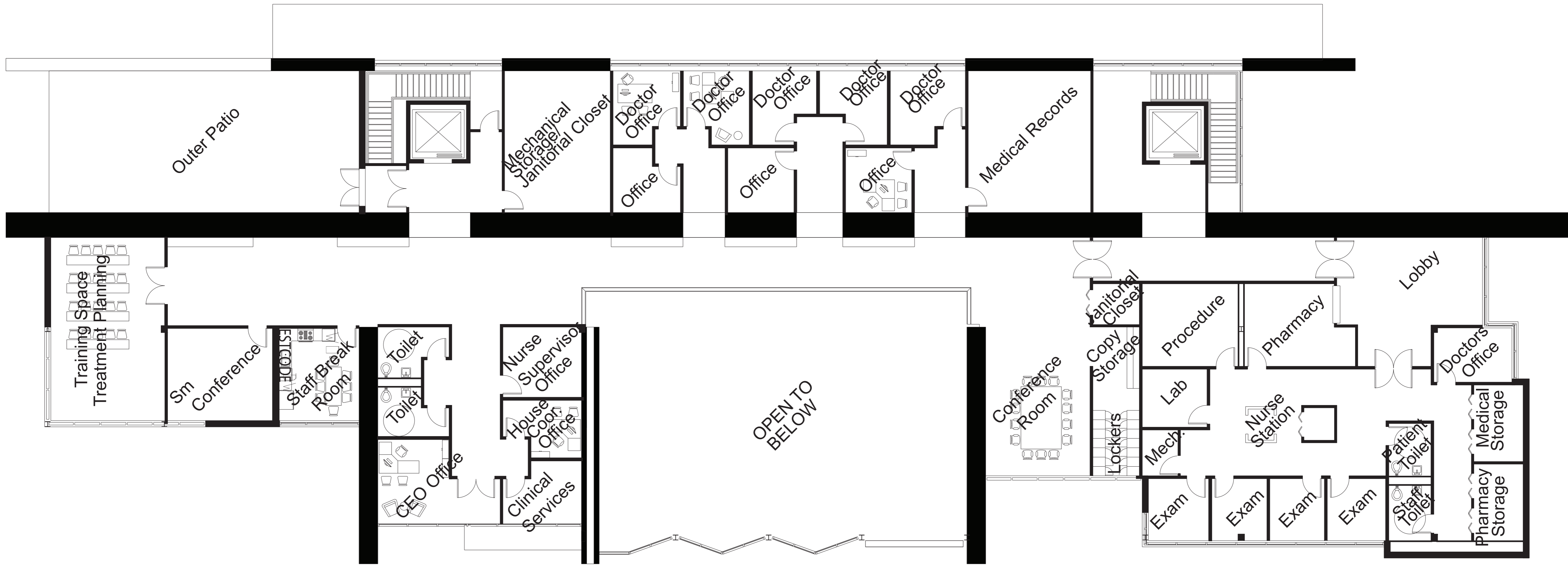
Unit Garden





Main Building First Level





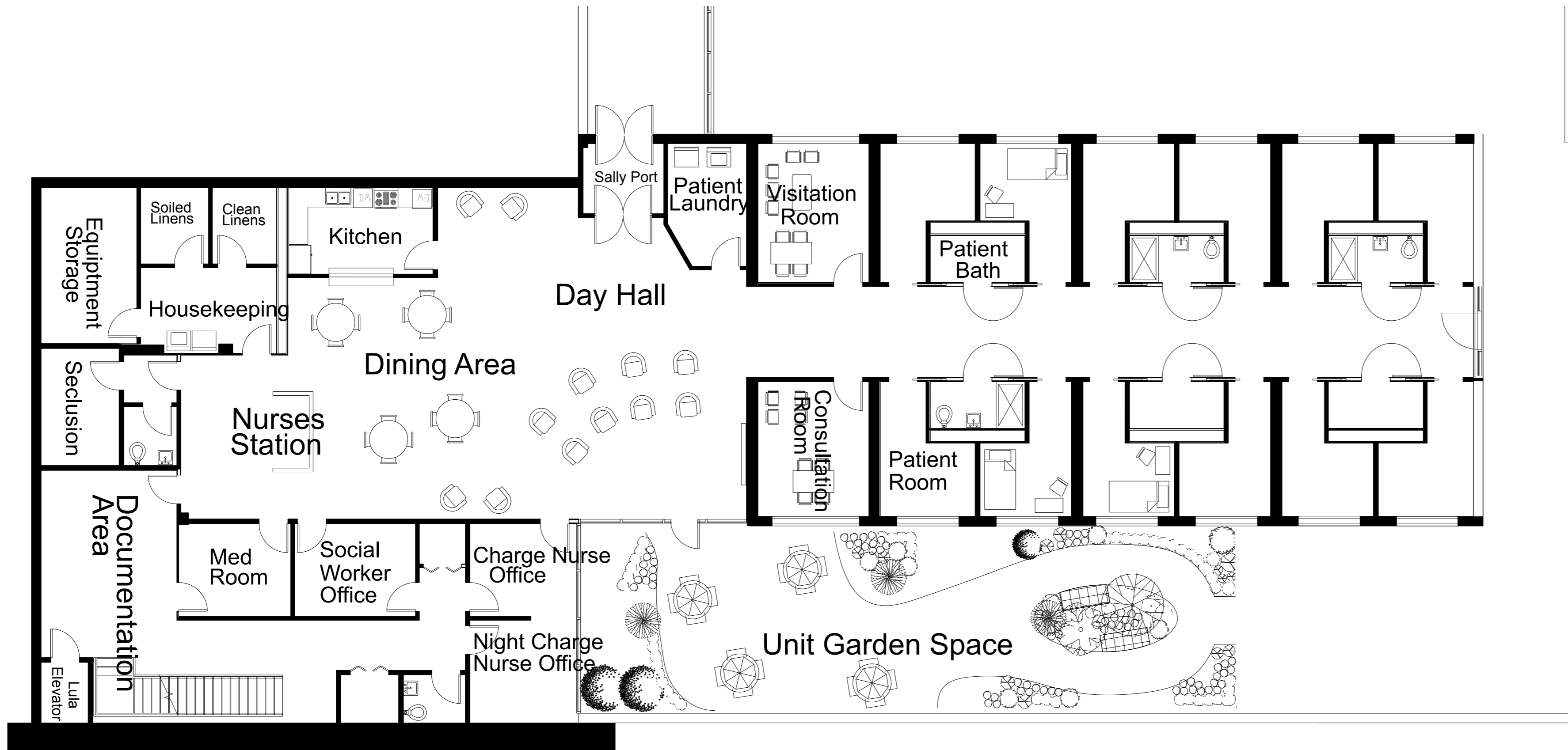
Main Building Second Level



8 Feet



First Floor Reference View

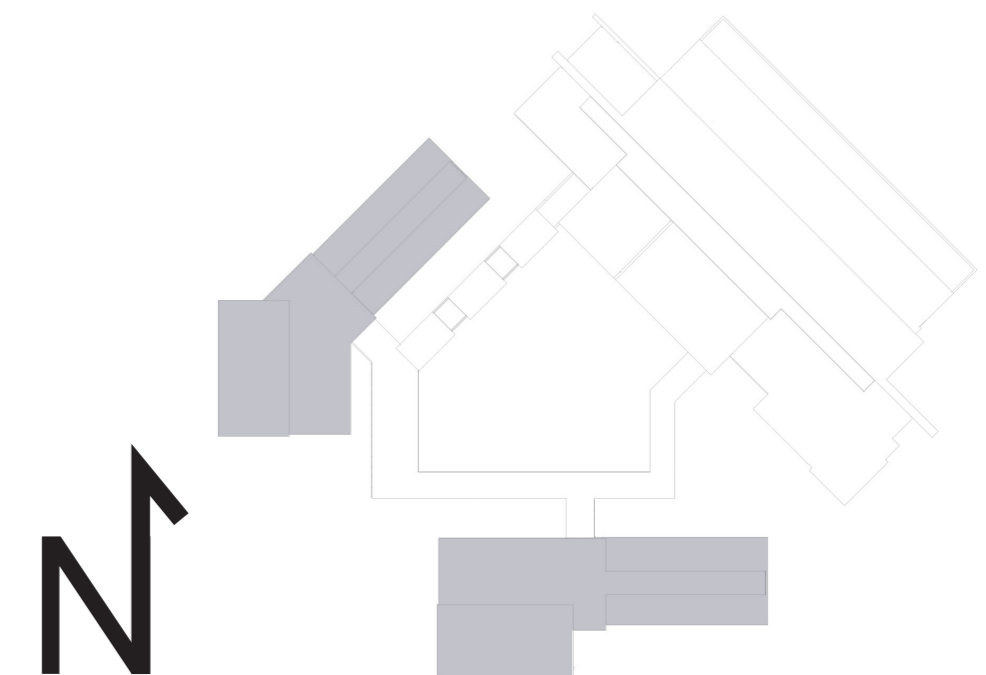


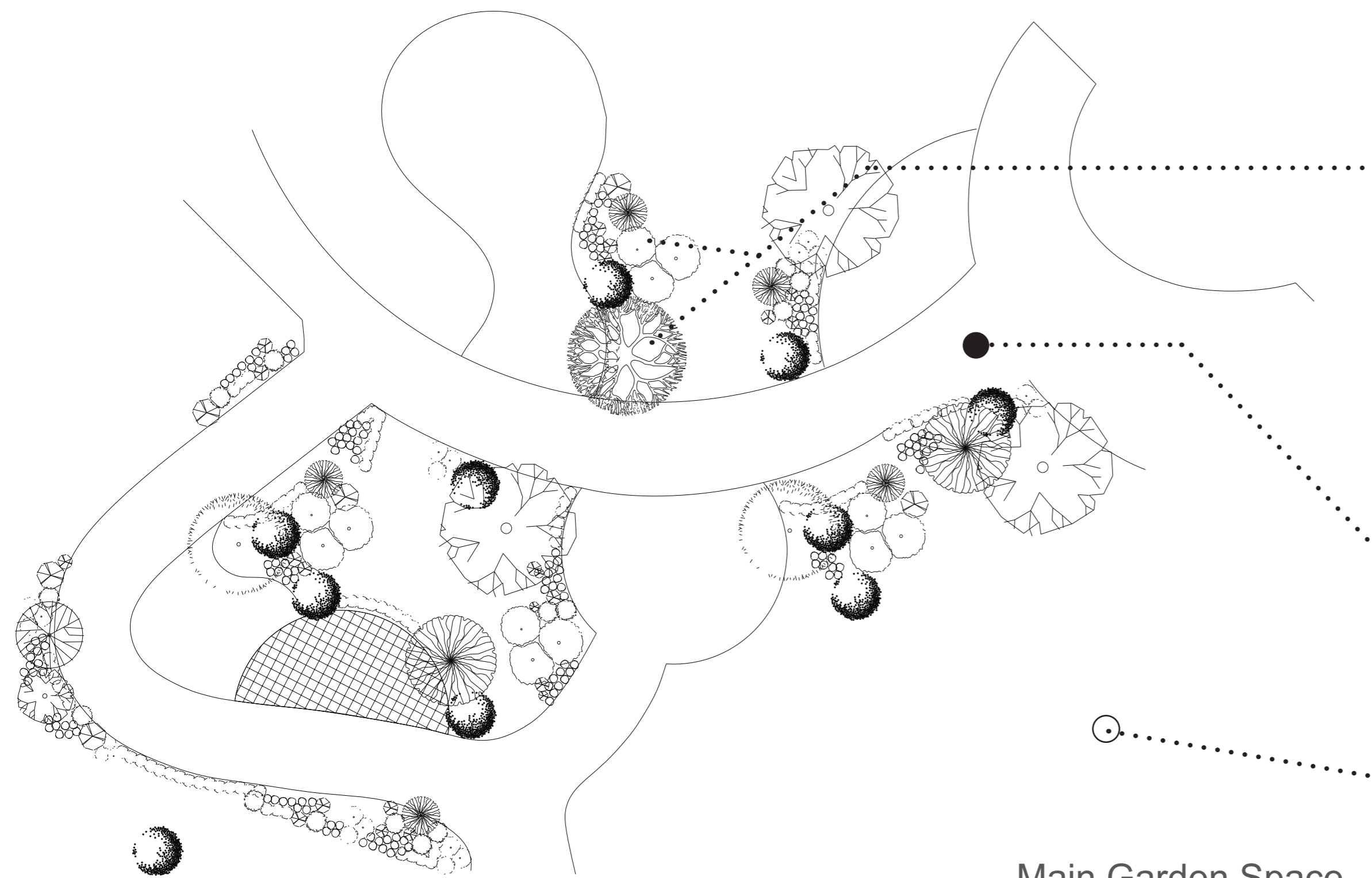
Unit First Level



Unit Second Level

Unit First and Second Level





Low growing plants  
 Large Vegetation and trees  
 planted away from building  
 perimeter

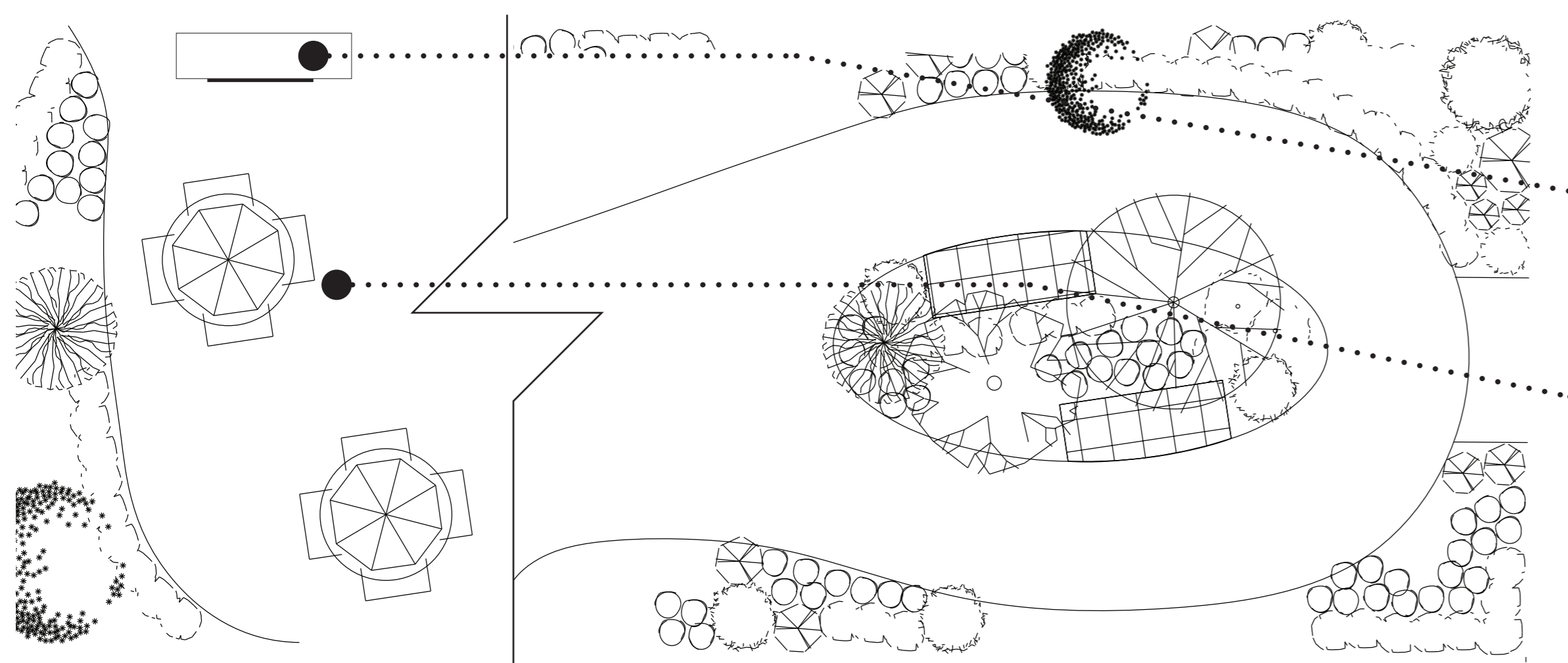
Furniture that can withstand abuse  
 and be reinforce to the pavement or  
 surface

Main Path is created wide  
 enough for two wheelchairs to  
 pass

Open areas for visability

Main Garden Space

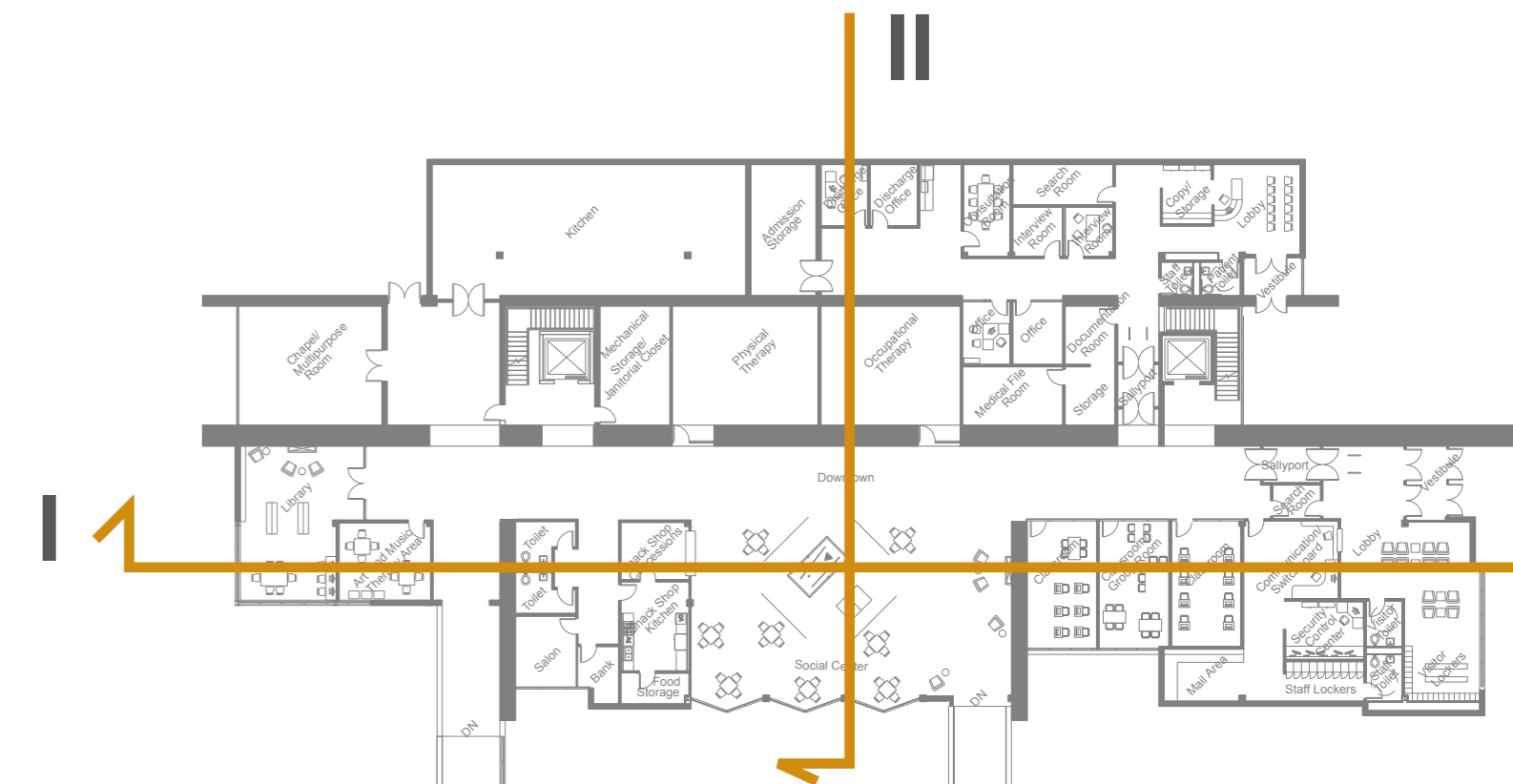
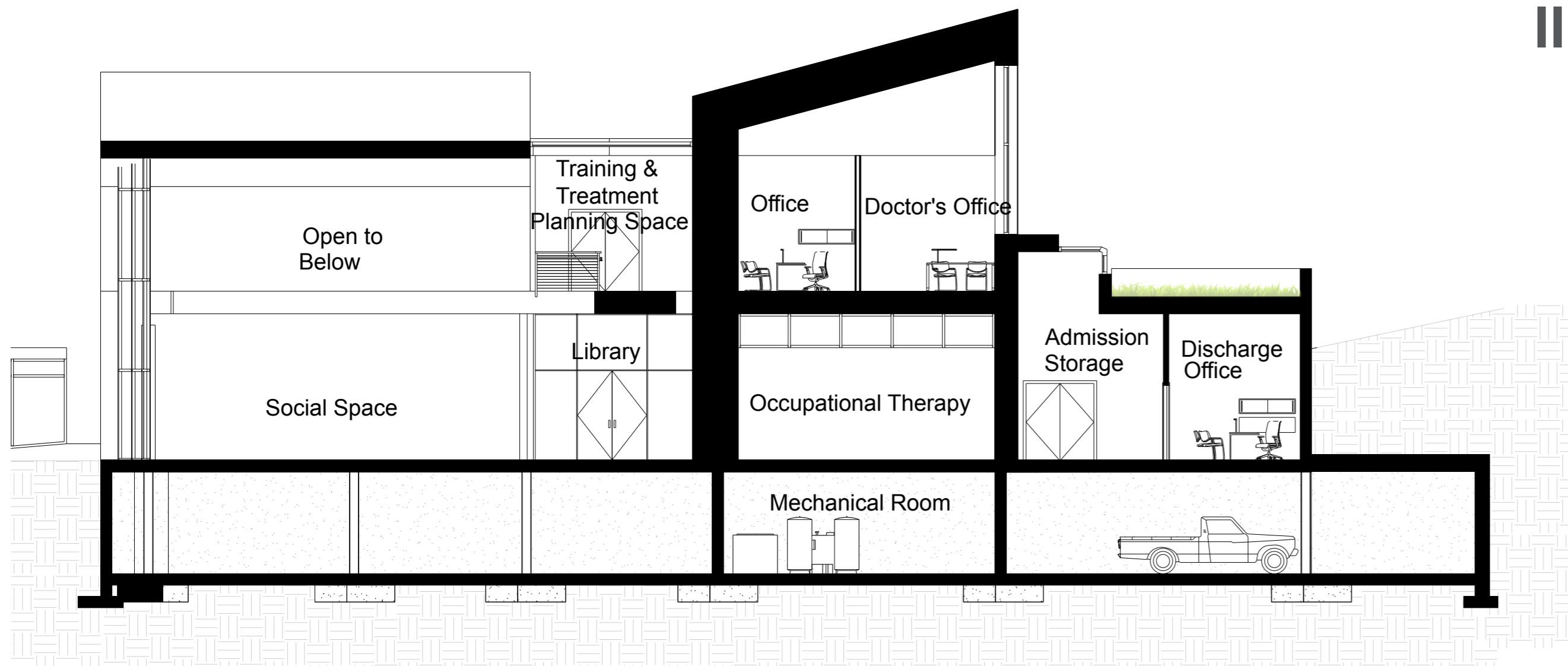
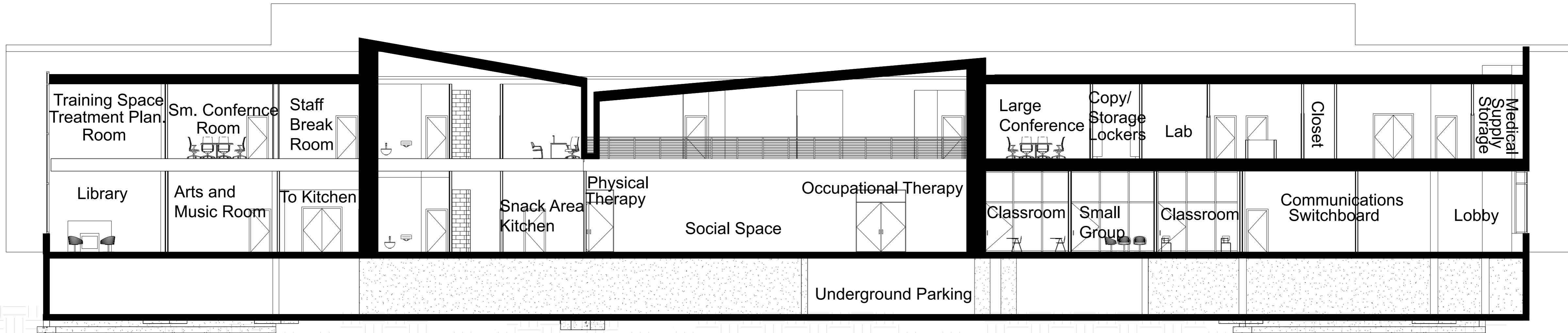
Easy to Navigate



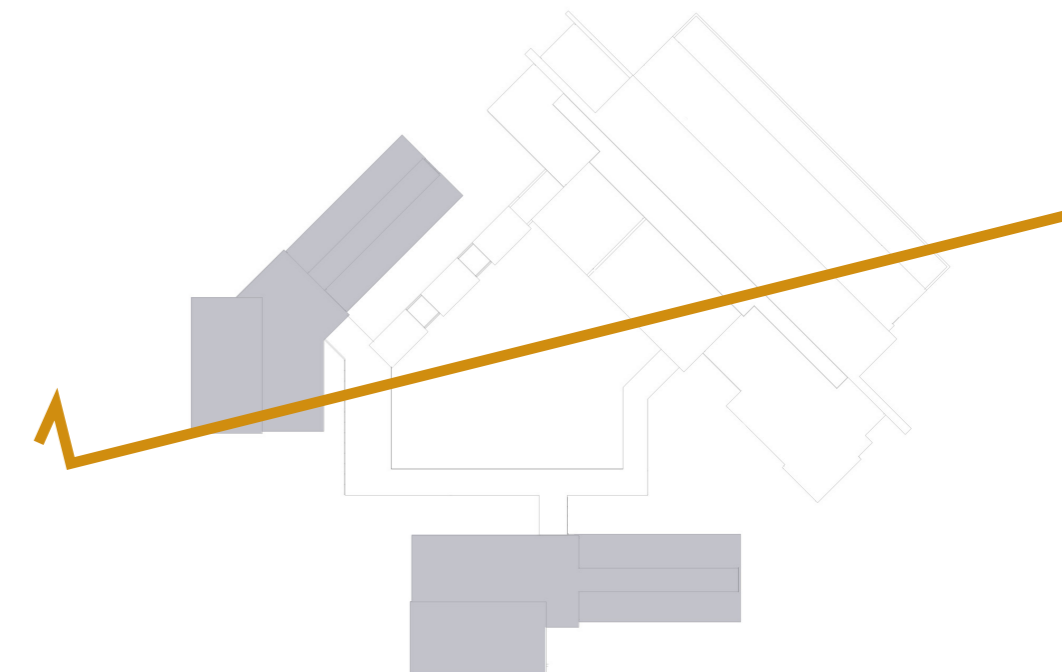
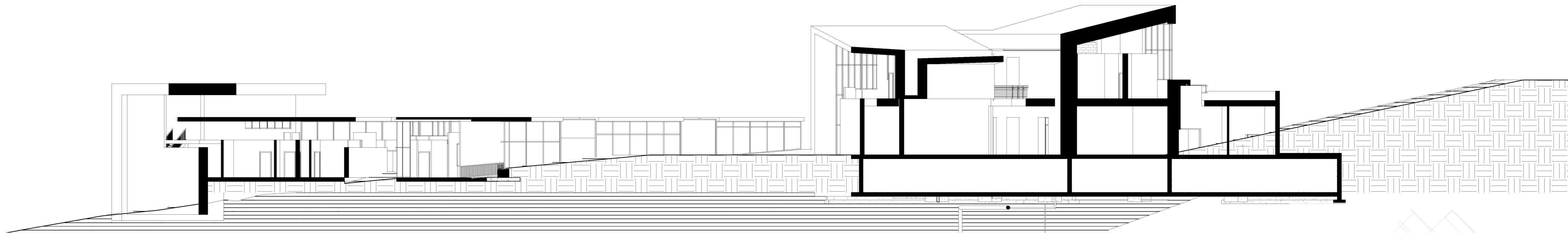
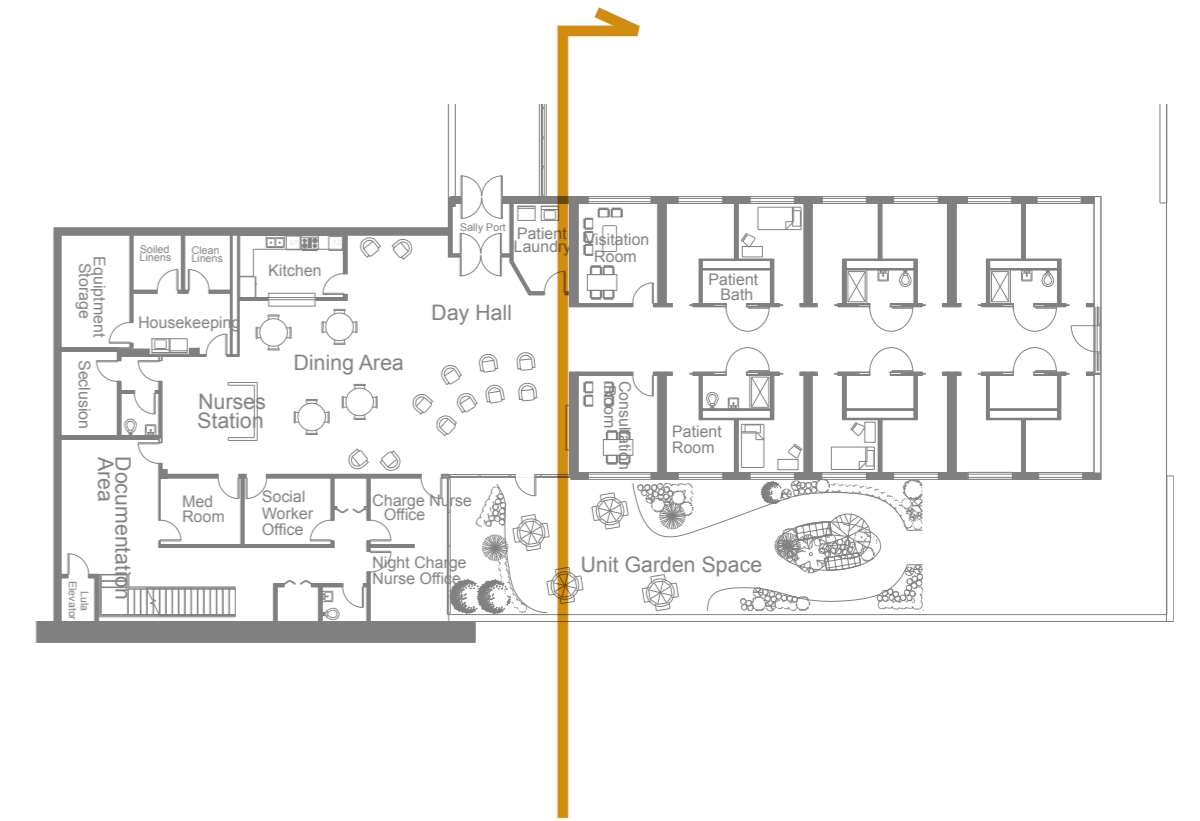
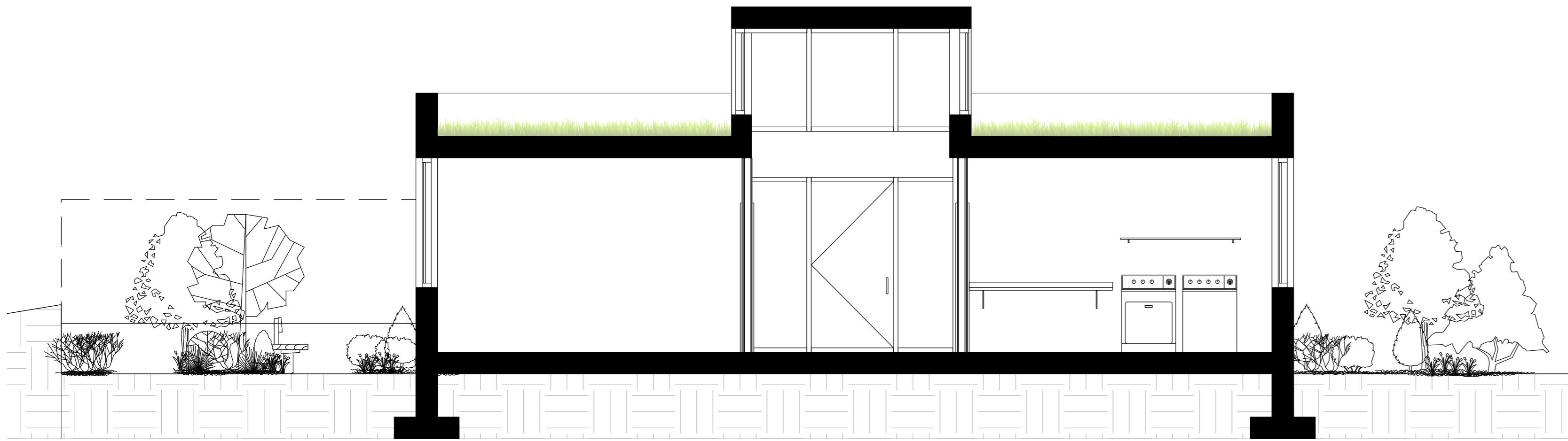
Provide household activities  
 such as barbeque and grilling

Areas of congregation and  
 setting with shade

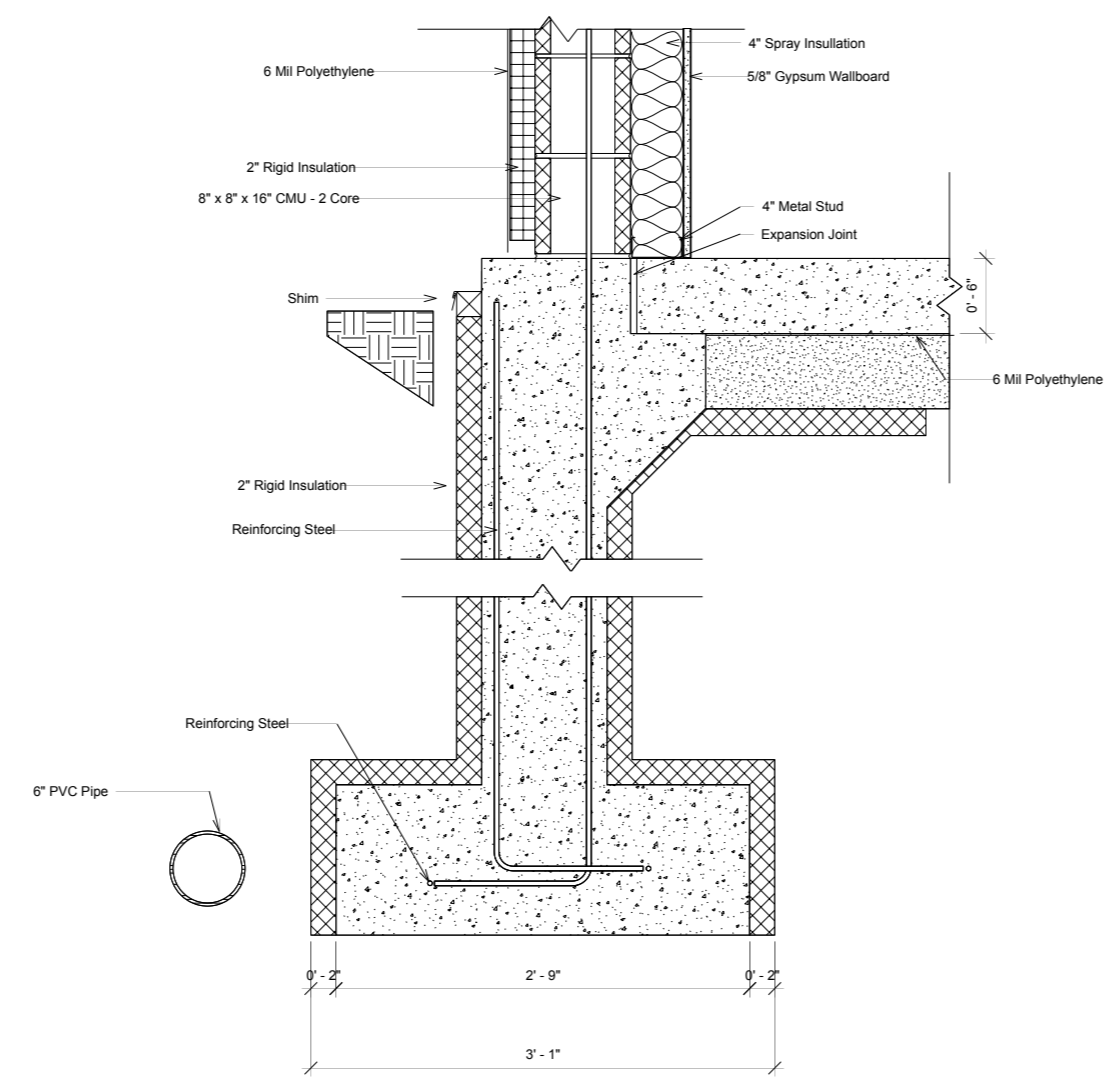
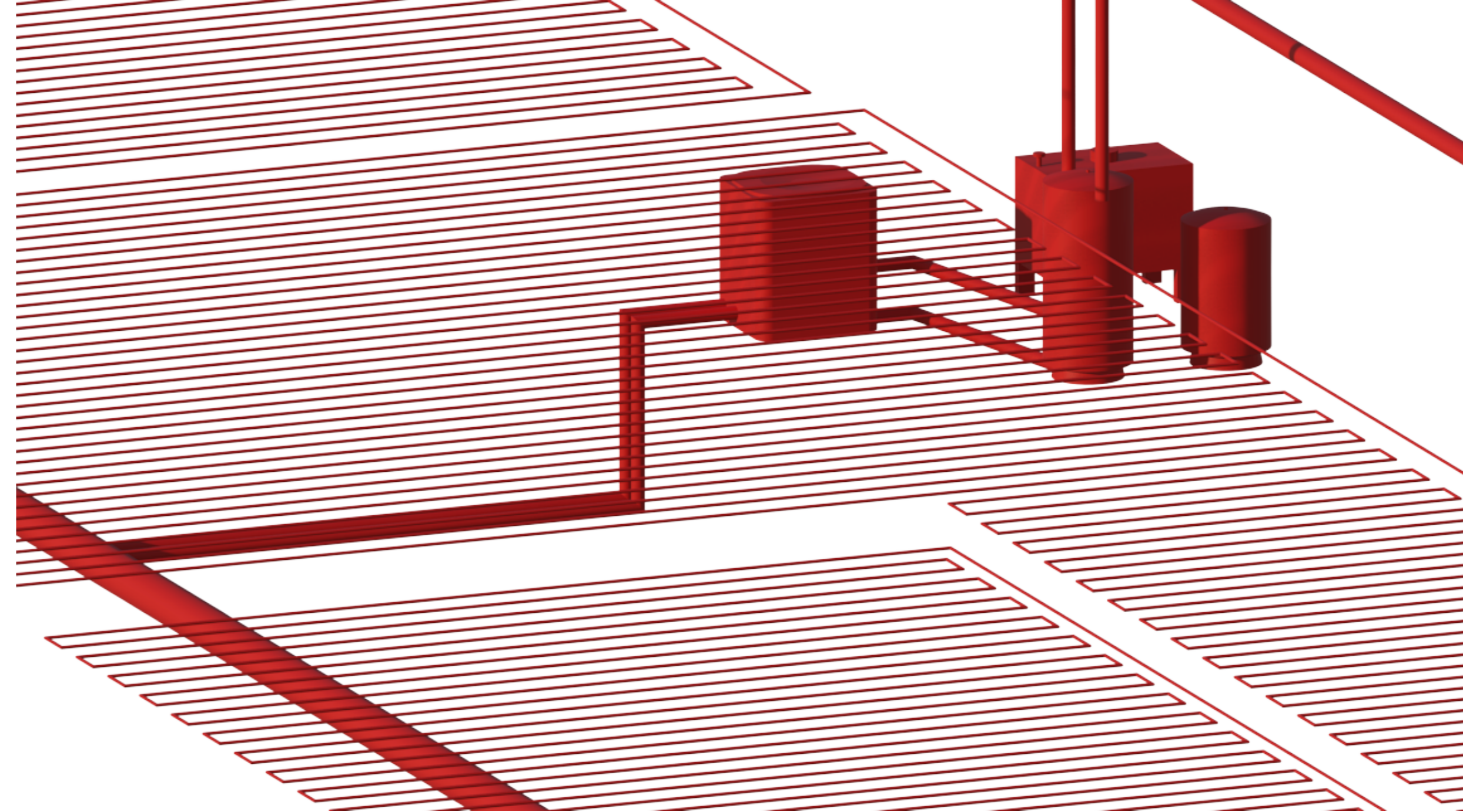
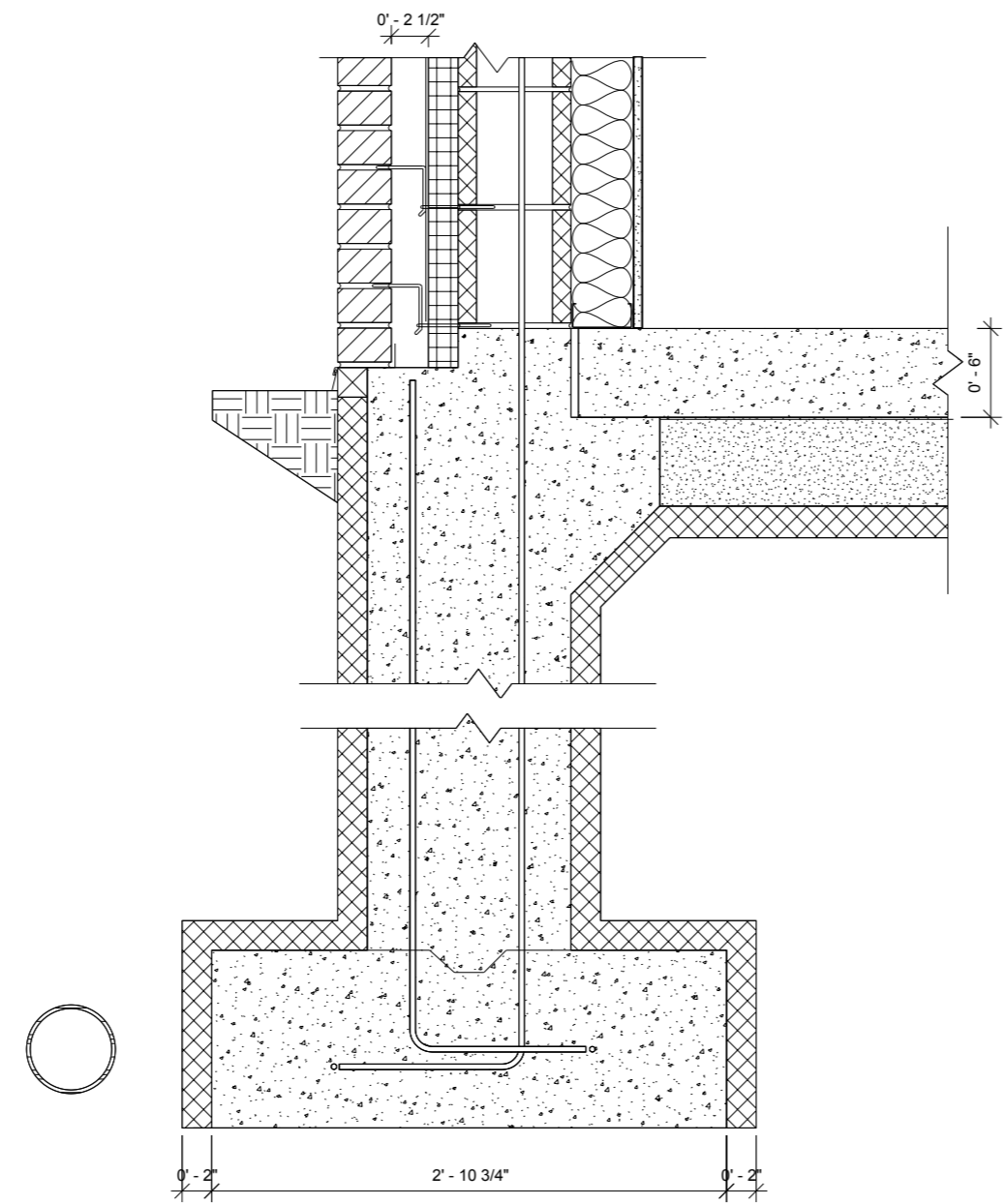
Unit Garden Space



Main Building Section



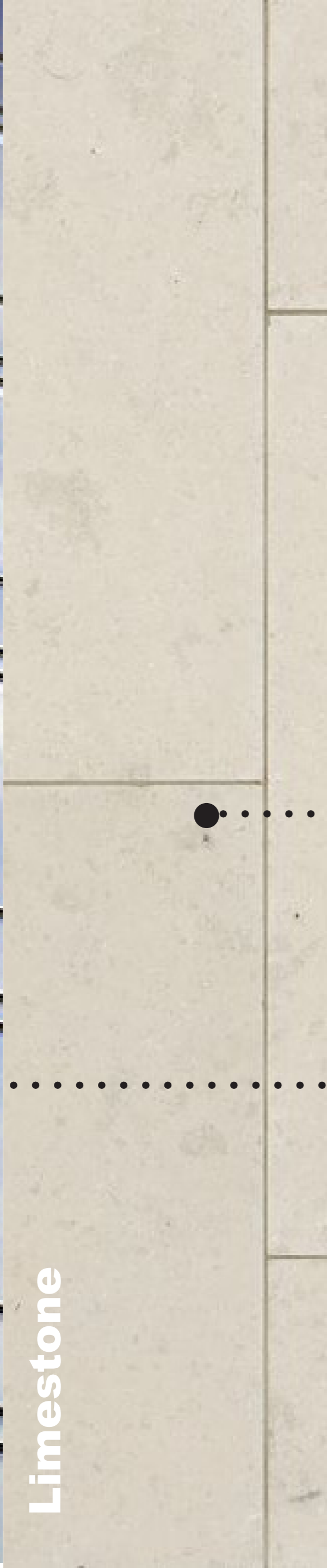
Unit and Site Section



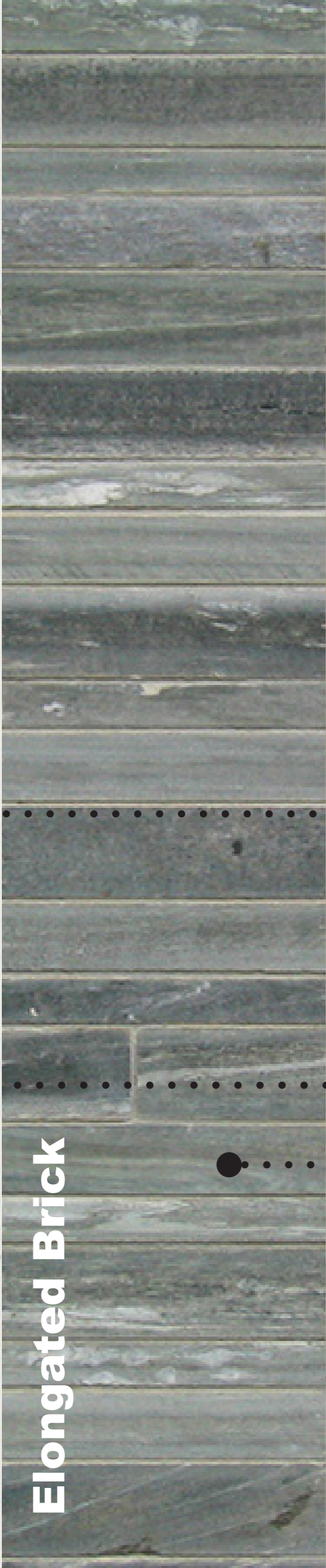




**Glazing**



**Limestone**



**Elongated Brick**



**Slatted Wood**



**|Linework Vignette |**

