



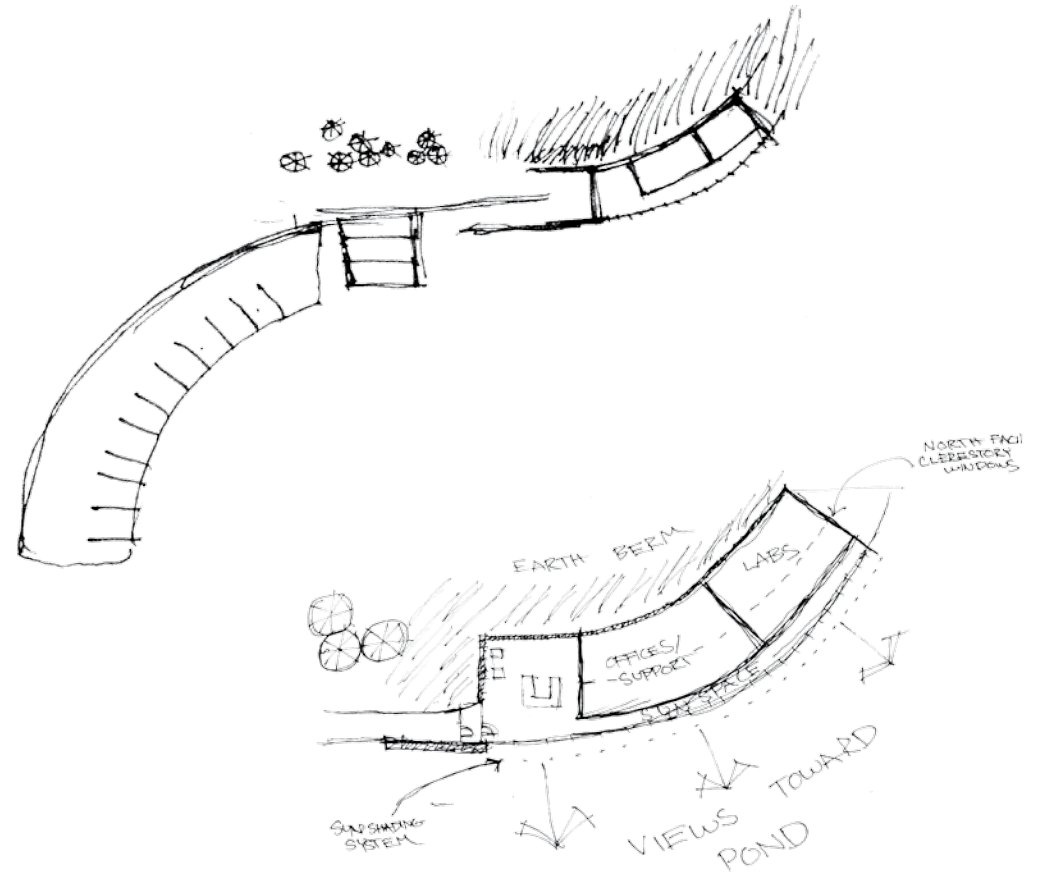
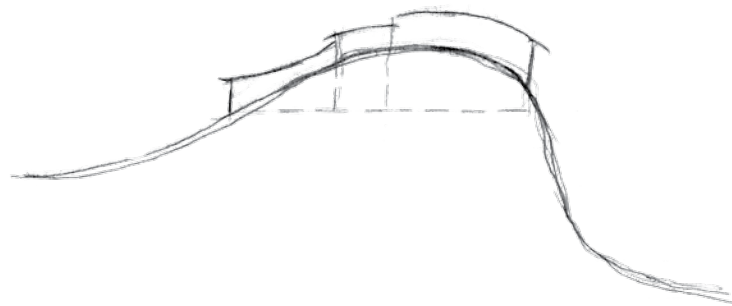
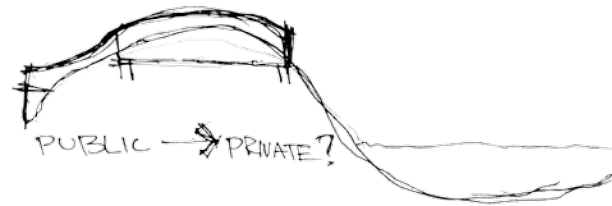
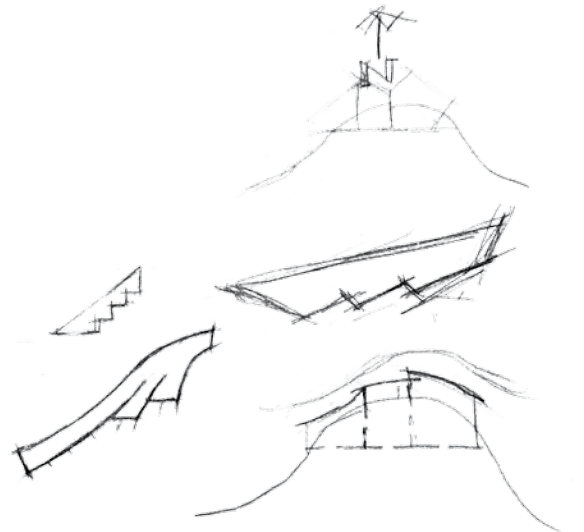
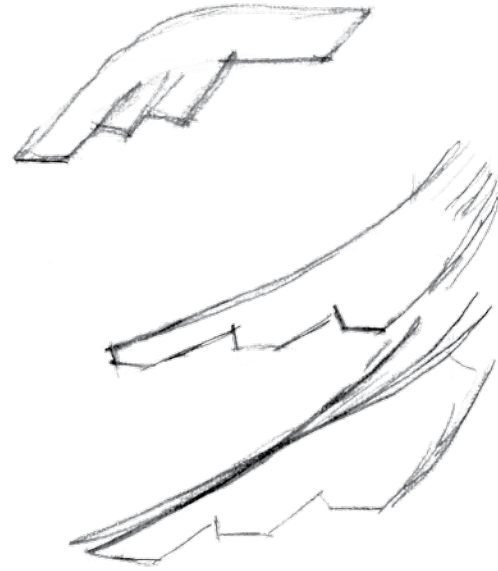
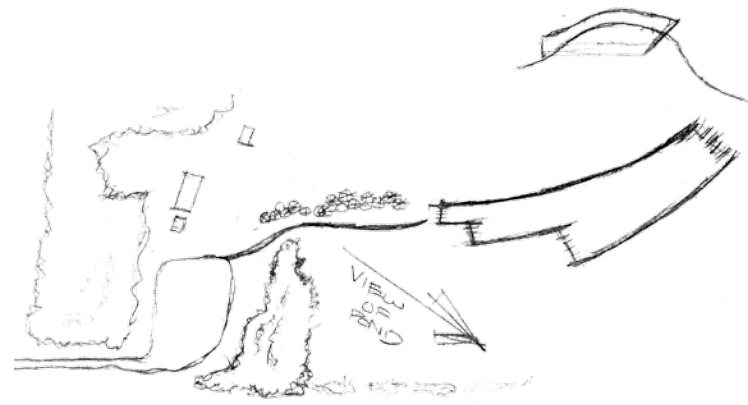
A WETLANDS RESEARCH LABORATORY

matt fremstad
arch 771

mark bamhouse

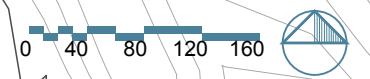
Programs: Rhino 5, Revit 2014, 3DS Max 2014 AutoCad 2014, Photoshop CS5, InDesign CS5

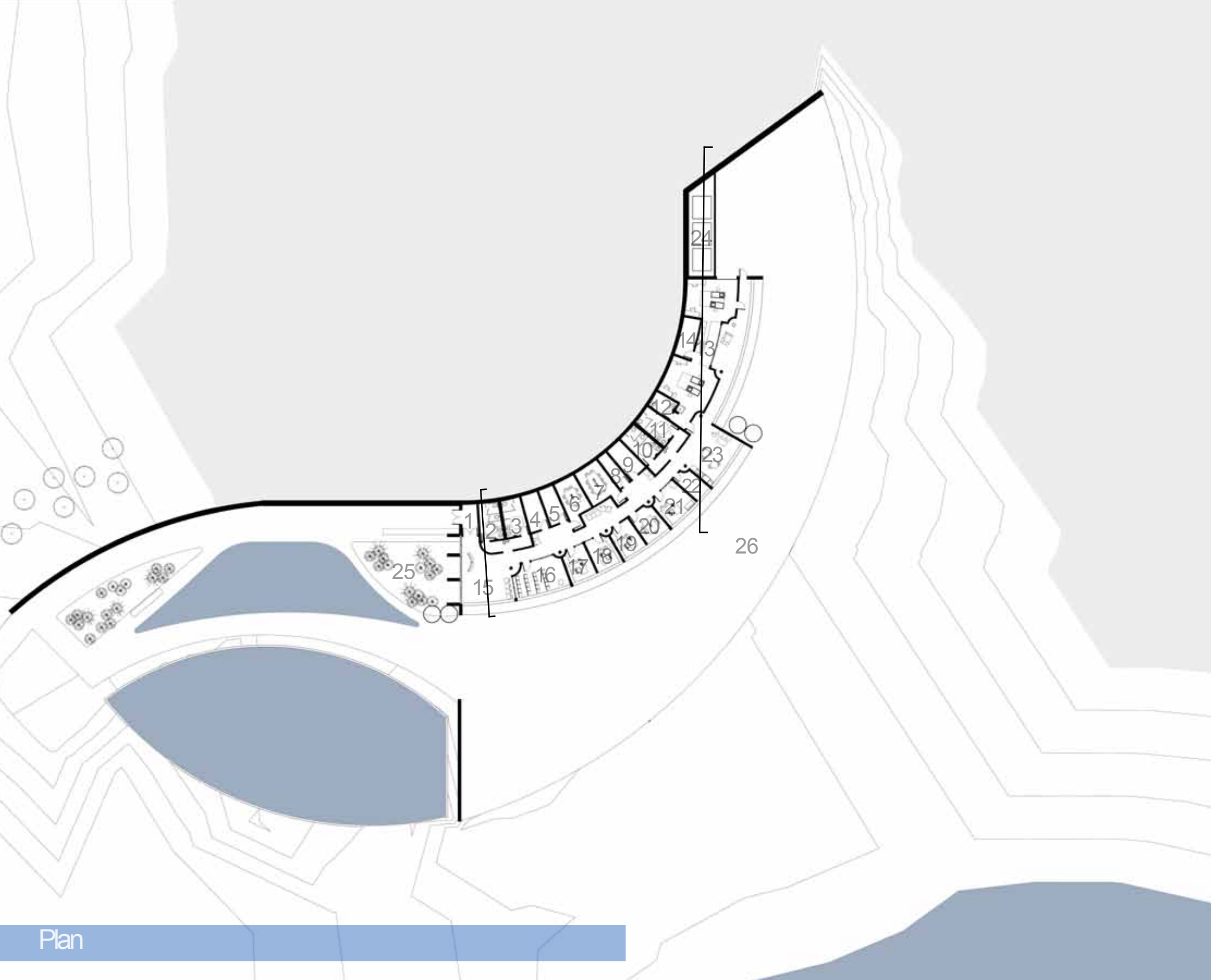






Site Plan





- 1. Vestibule
- 2. Toilet Room
- 3. Toilet Room
- 4. Storage
- 5. Mechanical
- 6. Small Conference
- 7. Large Conference
- 8. Janitor
- 9. Server Room
- 10. Toilet Room
- 11. Toilet Room
- 12. Lab Toilet
- 13. Lab Space
- 14. Lab Mechanical
- 15. Lobby/ Gallery
- 16. Presentation Space
- 17. Office
- 18. Office
- 19. Office
- 20. Small Conference
- 21. Director's Office
- 22. Mail Room
- 23. Break/ Lounge
- 24. Mechanical/ Service Pad
- 25. Rain Garden
- 26. Prairie Restoration

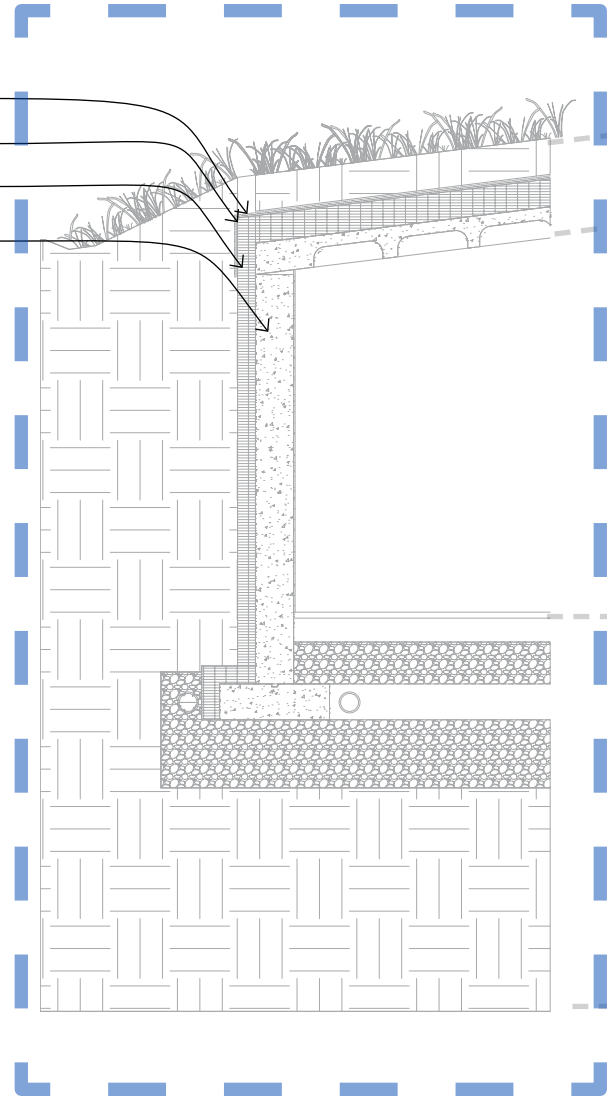


Longitudinal Section



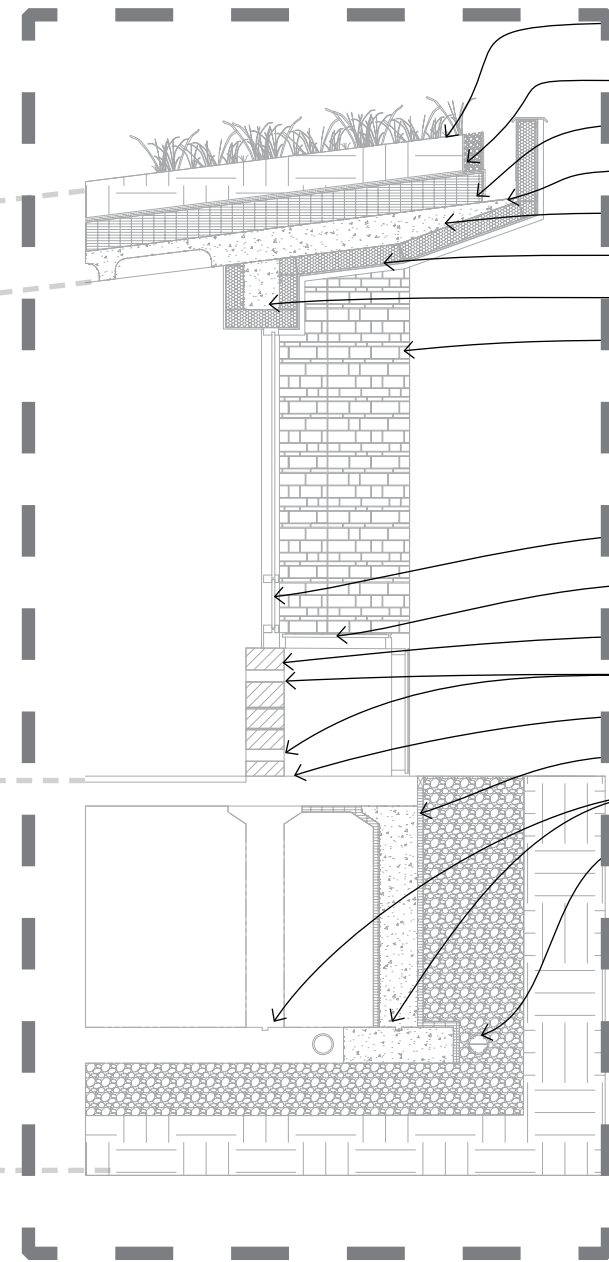
Transverse Section

Root control membrane
 Roof membrane
 6" rigid insulation
 1' bearing wall



1' Intensive green roof
 6" Gravel expansion stop
 8" Rigid insulation
 Hidden gutter
 8" Waffle slab
 6" Rigid insulation
 Concrete termination beam
 Random coursed ashlar granite

 Operable windows
 Sloped trombe wall glazing
 Random fieldstone trombe wall
 Convection slots
 6" concrete slab on grade
 2" Rigid insulation
 Stepped footing system
 6" Perforated pipe





Lobby



Breakout space





South Facade